



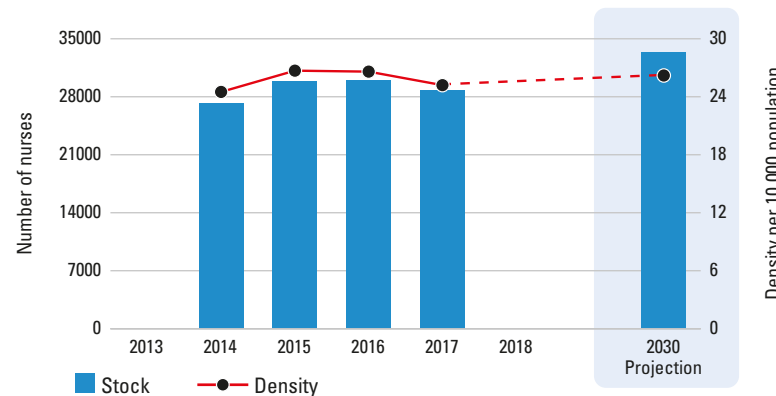
This map is an approximation of actual country borders.

# Tunisia

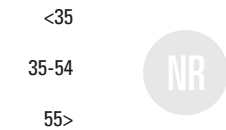
	COUNTRY	WHO REGION
<b>Total population</b> (UN population prospects, 2019)	11694721	712276291
<b>UHC Service Coverage Index</b> (0-100 points, 2017)	70	-
<b>Life expectancy at birth m/f</b> (years, 2016)	74.1/78.1	67.7/70.7
<b>Probability of dying under five</b> (per 1 000 live births, 2018)	17.0	46.9
<b>Probability of dying between 15 and 60 years m/f</b> (per 1 000 population, 2016)	111/71	172/125
<b>Gross domestic product (GDP)</b> (per capita US\$, 2017)	3464	3778
<b>Current health expenditure as a per cent of GDP</b> (2017)	7.2	5.7
<b>Current health expenditure per capita</b> (US\$, 2017)	251	556

Source: WHO

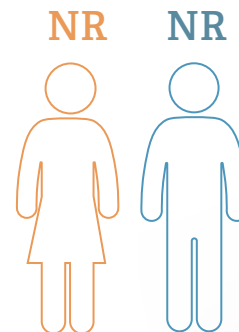
## Nursing stock and density 2013-2018



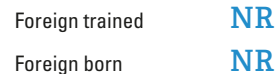
## Age distribution



## Sex distribution



## Nurse mobility



## Country capacity on:

✓ Yes ✖ Partial ✗ No NR No Response

### EDUCATION REGULATION

- Master list of accredited education institutions ✓
- Accreditation mechanisms for education institutions ✖
- Standards for duration and content of education ✓
- Standards for interprofessional education NR
- Standards for faculty qualifications<sup>†</sup> ✓

### PRACTICE REGULATION

- Nursing council/authority for regulation of nursing<sup>†</sup> ✗
- Fitness for practice examination<sup>†</sup> ✗
- Continuing professional development ✗
- Existence of advanced nursing roles ✓

### WORKING CONDITIONS

- Regulation on working hours and conditions ✓
- Regulation on minimum wage ✓
- Regulation on social protection ✓
- Measures to prevent attacks on HWs ✓

### GOVERNANCE AND LEADERSHIP

- Chief Nursing Officer position<sup>†</sup> ✗
- Nursing leadership development program<sup>†</sup> ✖
- National association for pre-licensure students<sup>†</sup> ✓

## Nursing personnel (latest year)

28739

Nursing professionals  
28739

Nursing associates  
0

Nurses not further defined  
0

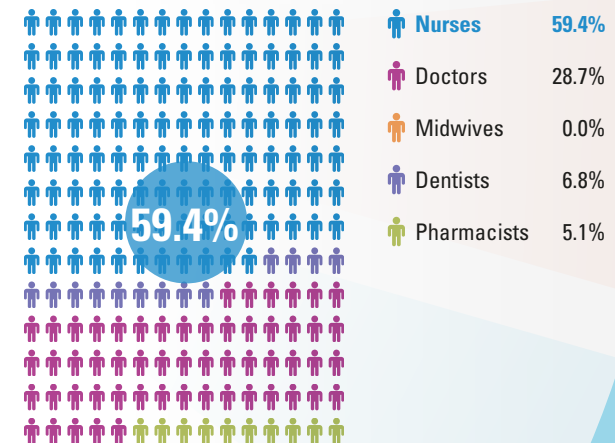
Share of professional nurses  
100%

Density  
25.2  
per 10 000 population

Graduates per year  
NR

Minimum duration of training  
NR

## Share of nurses within the health workforce



## Issues for consideration

**An estimated shortage range of 1000 to 2000 nurses is projected for year 2030\*.**

\*As compared to a benchmark density. Details in *State of the world's nursing 2020 report* and *Global Strategy on Human Resources for Health: Workforce 2030*

Source: National Health Workforce Accounts (NHWA), 2020 except †. Latest available data are displayed. Includes multiple data sources such as the OECD/Eurostat/WHO EURO Joint Data Collection, labour force survey, census data and estimates from WHO for shortages. Stock and density projection by 2030 based on a simple stock and flow model. See full report for further details. NR=Not reported. Data as of 10 March 2020.