



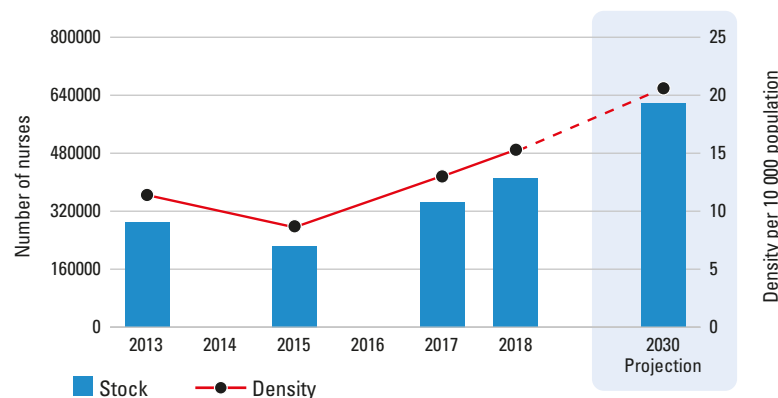
This map is an approximation of actual country borders.

Indonesia

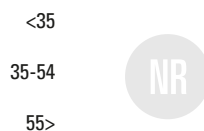
	COUNTRY	WHO REGION
Total population (UN population prospects, 2019)	270625567	2001946277
UHC Service Coverage Index (0-100 points, 2017)	57	-
Life expectancy at birth m/f (years, 2016)	67.3/71.4	67.9/71.3
Probability of dying under five (per 1 000 live births, 2018)	25.0	33.6
Probability of dying between 15 and 60 years m/f (per 1 000 population, 2016)	205/146	206/134
Gross domestic product (GDP) (per capita US\$, 2017)	3846	2341
Current health expenditure as a per cent of GDP (2017)	3.0	4.3
Current health expenditure per capita (US\$, 2017)	115	192

Source: WHO

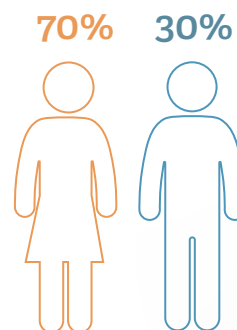
Nursing stock and density 2013-2018



Age distribution



Sex distribution



Nurse mobility

Foreign trained **NR**
Foreign born **NR**

Country capacity on:

✓ Yes ✖ Partial ✗ No NR No Response

EDUCATION REGULATION

- Master list of accredited education institutions
- Accreditation mechanisms for education institutions
- Standards for duration and content of education
- Standards for interprofessional education
- Standards for faculty qualifications†

PRACTICE REGULATION

- Nursing council/authority for regulation of nursing†
- Fitness for practice examination†
- Continuing professional development
- Existence of advanced nursing roles

WORKING CONDITIONS

- Regulation on working hours and conditions
- Regulation on minimum wage
- Regulation on social protection
- Measures to prevent attacks on HWs

GOVERNANCE AND LEADERSHIP

- Chief Nursing Officer position†
- Nursing leadership development program†
- National association for pre-licensure students†

Nursing personnel (latest year) **409950**

Nursing professionals 56717	Nursing associates 353233	Nurses not further defined 0
---------------------------------------	-------------------------------------	--

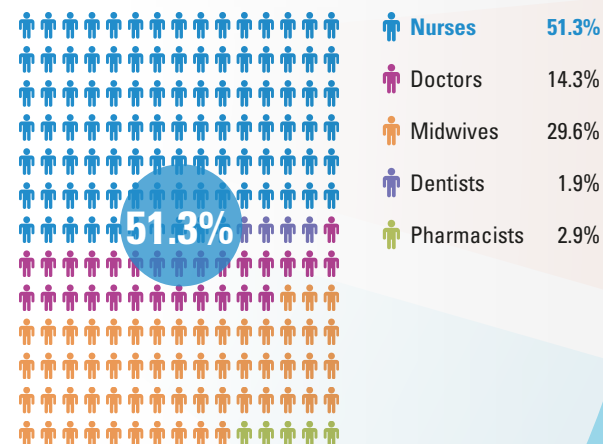
Share of professional nurses
14%

Density
15.3
per 10 000 population

Graduates per year
NR

Minimum duration of training
3 years

Share of nurses within the health workforce



Issues for consideration

An estimated shortage range of 200000 to 300000 nurses is projected for year 2030*.

*As compared to a benchmark density. Details in *State of the world's nursing 2020 report* and *Global Strategy on Human Resources for Health: Workforce 2030*

Source: National Health Workforce Accounts (NHWA), 2020 except †. Latest available data are displayed. Includes multiple data sources such as the OECD/Eurostat/WHO EURO Joint Data Collection, labour force survey, census data and estimates from WHO for shortages. Stock and density projection by 2030 based on a simple stock and flow model. See full report for further details. NR=Not reported. Data as of 10 March 2020.