



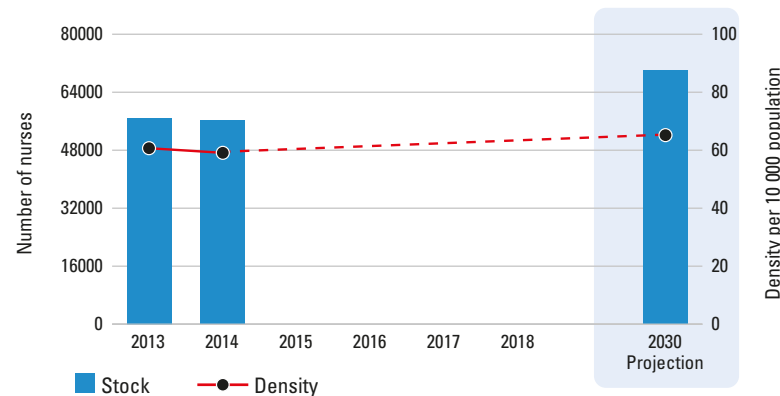
This map is an approximation of actual country borders.

## Azerbaijan

	COUNTRY	WHO REGION
<b>Total population</b> (UN population prospects, 2019)	10047719	930166618
<b>UHC Service Coverage Index</b> (0-100 points, 2017)	65	-
<b>Life expectancy at birth m/f</b> (years, 2016)	70.3/75.7	74.2/80.8
<b>Probability of dying under five</b> (per 1 000 live births, 2018)	21.5	8.6
<b>Probability of dying between 15 and 60 years m/f</b> (per 1 000 population, 2016)	160/76	155/70
<b>Gross domestic product (GDP)</b> (per capita US\$, 2017)	4146	23764
<b>Current health expenditure as a per cent of GDP</b> (2017)	6.7	7.8
<b>Current health expenditure per capita</b> (US\$, 2017)	276	2387

Source: WHO

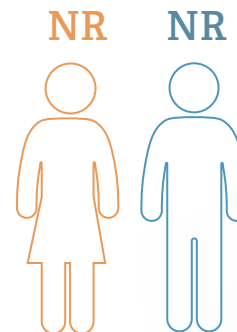
### Nursing stock and density 2013-2018



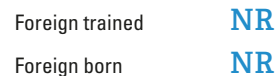
### Age distribution



### Sex distribution



### Nurse mobility



### Country capacity on:

✓ Yes ✖ Partial ✗ No NR No Response

#### EDUCATION REGULATION

- Master list of accredited education institutions ✓
- Accreditation mechanisms for education institutions ✓
- Standards for duration and content of education ✓
- Standards for interprofessional education ✗
- Standards for faculty qualifications<sup>†</sup> NR

#### PRACTICE REGULATION

- Nursing council/authority for regulation of nursing<sup>†</sup> ✓
- Fitness for practice examination<sup>†</sup> ✓
- Continuing professional development ✗
- Existence of advanced nursing roles ✗

#### WORKING CONDITIONS

- Regulation on working hours and conditions ✓
- Regulation on minimum wage ✓
- Regulation on social protection ✓
- Measures to prevent attacks on HWs ✗

#### GOVERNANCE AND LEADERSHIP

- Chief Nursing Officer position<sup>†</sup> NR
- Nursing leadership development program<sup>†</sup> NR
- National association for pre-licensure students<sup>†</sup> NR

### Nursing personnel (latest year)

56148

Nursing professionals  
0

Nursing associates  
0

Nurses not further defined  
56148

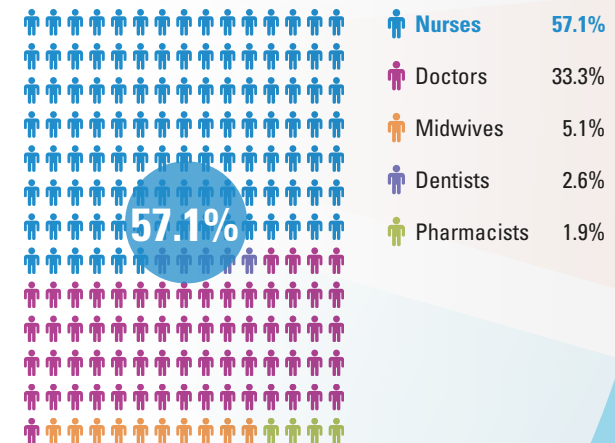
Share of professional nurses  
NR

Density  
59.1  
per 10 000  
population

Graduates per year  
NR

Minimum duration of training  
NR

### Share of nurses within the health workforce



### Issues for consideration

**Density above threshold, no estimation for shortage.**

\*As compared to a benchmark density. Details in *State of the world's nursing 2020 report* and *Global Strategy on Human Resources for Health: Workforce 2030*

**Source:** National Health Workforce Accounts (NHWA), 2020 except †. Latest available data are displayed. Includes multiple data sources such as the OECD/Eurostat/WHO EURO Joint Data Collection, labour force survey, census data and estimates from WHO for shortages. Stock and density projection by 2030 based on a simple stock and flow model. See full report for further details. NR=Not reported. Data as of 10 March 2020.