

This map is an approximation of actual country borders.

### Country capacity on:

✓ Yes ✖ Partial ✗ No NR No Response

#### EDUCATION REGULATION

- Master list of accredited education institutions ✓
- Accreditation mechanisms for education institutions ✓
- Standards for duration and content of education ✓
- Standards for interprofessional education ✓
- Standards for faculty qualifications† ✗

#### PRACTICE REGULATION

- Nursing council/authority for regulation of nursing† ✗
- Fitness for practice examination† ✗
- Continuing professional development ✖
- Existence of advanced nursing roles NR

#### WORKING CONDITIONS

- Regulation on working hours and conditions ✓
- Regulation on minimum wage ✓
- Regulation on social protection ✖
- Measures to prevent attacks on HWs ✗

#### GOVERNANCE AND LEADERSHIP

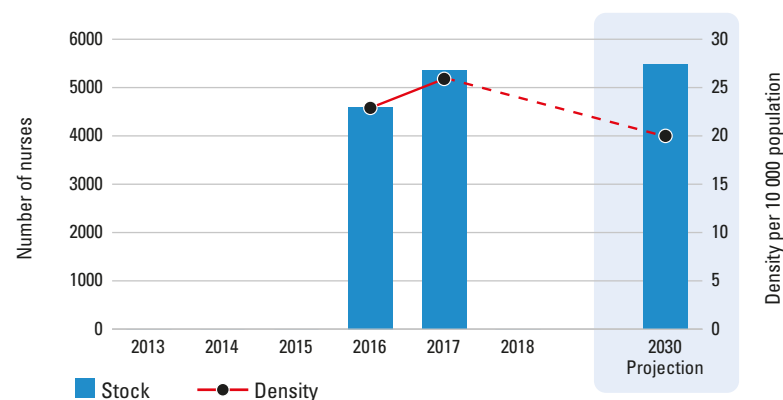
- Chief Nursing Officer position† ✗
- Nursing leadership development program† ✓
- National association for pre-licensure students† ✓

## Gabon

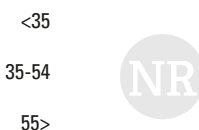
	COUNTRY	WHO REGION
<b>Total population</b> (UN population prospects, 2019)	2172578	1091758856
<b>UHC Service Coverage Index</b> (0-100 points, 2017)	49	—
<b>Life expectancy at birth m/f</b> (years, 2016)	64.8/68.2	59.6/62.7
<b>Probability of dying under five</b> (per 1 000 live births, 2018)	44.8	75.9
<b>Probability of dying between 15 and 60 years m/f</b> (per 1 000 population, 2016)	239/201	306/248
<b>Gross domestic product (GDP)</b> (per capita US\$, 2017)	7354	1648
<b>Current health expenditure as a per cent of GDP</b> (2017)	2.8	5.7
<b>Current health expenditure per capita</b> (US\$, 2017)	205	124

Source: WHO

### Nursing stock and density 2013-2018



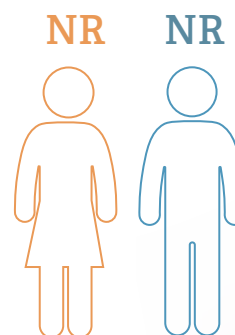
### Age distribution



### Nurse mobility

Foreign trained	NR
Foreign born	NR

### Sex distribution



### Nursing personnel (latest year)

5350

Nursing professionals  
1077

Nursing associates  
0

Nurses not further defined  
4273

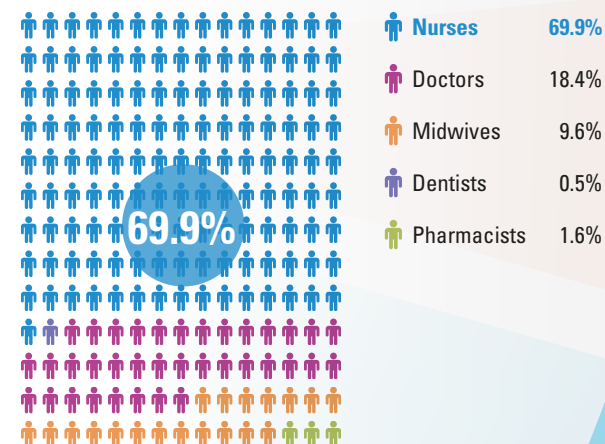
Share of professional nurses  
20%

Density  
25.9  
per 10 000 population

Graduates per year  
NR

Minimum duration of training  
NR

### Share of nurses within the health workforce



### Issues for consideration

**An estimated shortage range of 2000 to 3000 nurses is projected for year 2030\*.**

\*As compared to a benchmark density. Details in *State of the world's nursing 2020 report* and *Global Strategy on Human Resources for Health: Workforce 2030*

**Source:** National Health Workforce Accounts (NHWA), 2020 except †. Latest available data are displayed. Includes multiple data sources such as the OECD/Eurostat/WHO EURO Joint Data Collection, labour force survey, census data and estimates from WHO for shortages. Stock and density projection by 2030 based on a simple stock and flow model. See full report for further details. NR=Not reported. Data as of 10 March 2020.