

WEEKLY BULLETIN ON OUTBREAKS AND OTHER EMERGENCIES

Week 8: 14 – 20 February 2022

Data as reported by: 17:00; 20 February 2022



World Health
Organization

REGIONAL OFFICE FOR **Africa**
WHO Health Emergencies Programme

5

New events

135

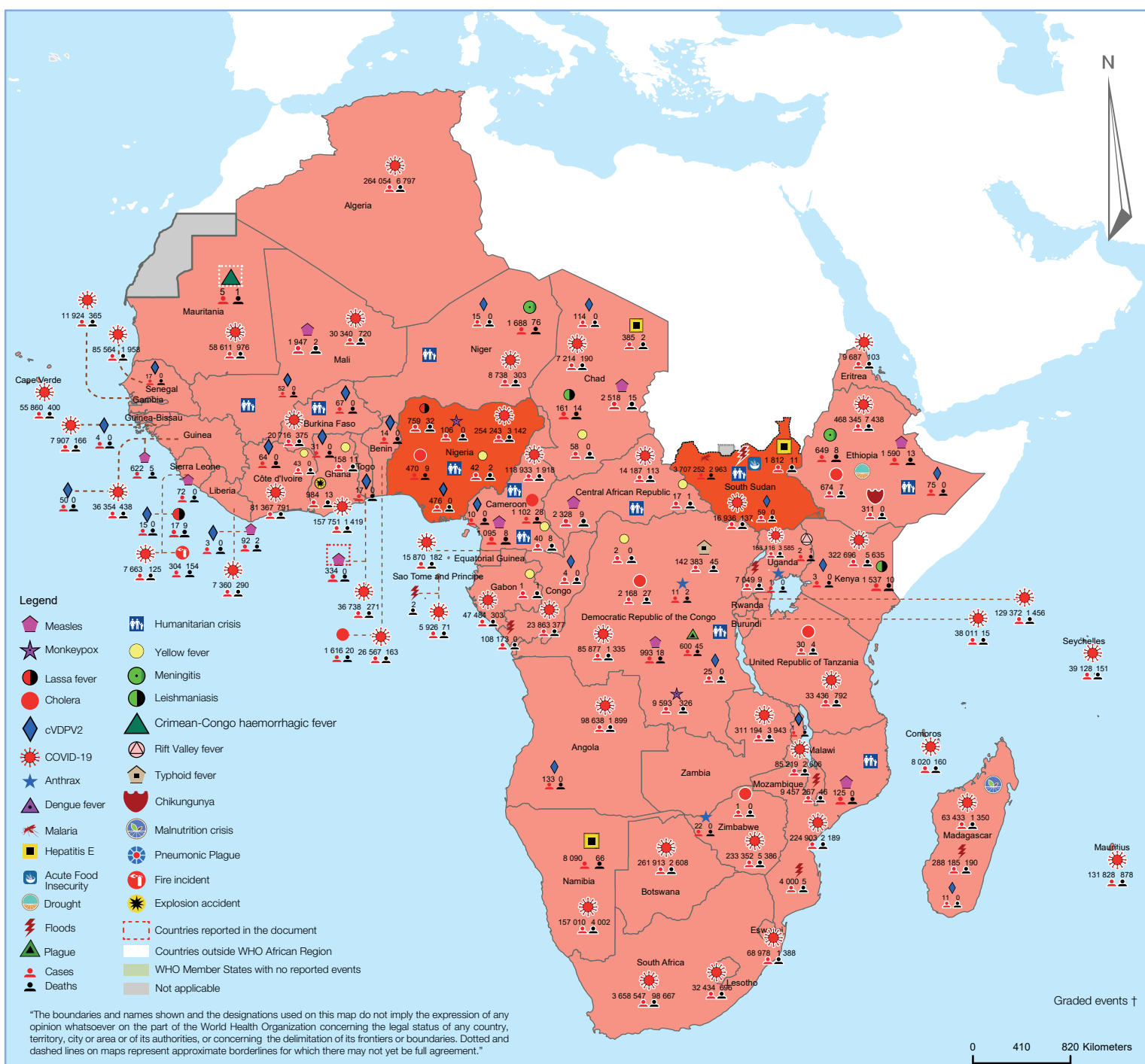
Ongoing events

116

Outbreaks

24

Humanitarian
crises



3

Grade 3 events

40

Grade 2 events

2

Grade 1 events

35

Ungraded events

3

Protracted 3 events

4

Protracted 2 events

3

Protracted 1 events

Overview

Contents

1 Overview

2 -6 Ongoing events

7 All events currently being monitored

This Weekly Bulletin focuses on public health emergencies occurring in the WHO African Region. The WHO Health Emergencies Programme is currently monitoring 140 events in the region. This week's articles cover:

- [Crimean Congo Haemorrhagic Fever in Mauritania](#)
- [COVID-19 across the WHO African region](#)
- [Measles in Togo](#)

For each of these events, a brief description, followed by public health measures implemented and an interpretation of the situation is provided.

A table is provided at the end of the bulletin with information on all new and ongoing public health events currently being monitored in the region, as well as recent events that have been controlled and closed.

Major issues and challenges include:

- Cases of Crimean-Congo haemorrhagic fever have been reported in Mauritania every week since the last week of January 2022. There are now four confirmed cases and one death among males who predominately work with animals. Interventions such as risk communication and contact tracing, and health system challenges are some of the major gaps the country faces to manage the outbreak.
- With almost two-years of the WHO African region battling the COVID-19 pandemic, Africa's fourth wave is gradually slowing down. This marks the eighth consecutive week that new cases in the African region have fallen, following the peak of the fourth wave in late-December 2021. Majority of countries in the region continue to see a decline in COVID-19 weekly cases except for eight countries that experienced a significant increase. Even with the continued decline, the number of cases remains high in some countries, which are still experiencing a resurgence. New deaths, however, increased during the past week. Lack of funding and other operational challenges are driving low vaccine uptake in some countries across the region.
- Togolese health authorities declared a measles outbreak on 9 February 2022 following confirmation of measles cases reported from health districts of Agoe, Ave, Bassar, Golfe and Zio. As of 11 February 2022, six districts are experiencing the measles outbreak including Zio, Agoe, Golfe, Kpélé, Tchaoudjo and Bassar. Although no death has been reported to-date, response activities should be implemented urgently to control this outbreak and avoid further spread. Togo has just recovered from a cholera outbreak and is still battling the ongoing COVID-19 pandemic.

Ongoing events

Crimean-Congo Haemorrhagic Fever

Mauritania

5
cases

1
Deaths

20.0%
CFR

EVENT DESCRIPTION

Five cases of Crimean-Congo haemorrhagic fever (CCHF) have been reported from Mauritania recently. The first case reported in week 4 (ending 30 January 2022) had originally consulted at a local health facility on 27 January 2022, after presenting with haemorrhagic symptoms: vomiting blood and nose bleeding. The patient was then referred to a hospital in the capital city of Nouakchott when symptoms persisted after two days and then further referred to a national isolation centre at Friendship Hospital a few days later. The patient is an animal herder who had several events of contact with animals some of which are known to have ticks. The case was confirmed positive for CCHF by the National Institute of Research in Public Health (INRSP) on 4 February 2022.

Four other confirmed cases were reported in weeks 5, 6, and 7, including one at the Kiffa Regional Hospital Centre and two others at the Nouakchott National Hospital Centre. All cases are males with ages ranging from 25-52 years. Furthermore, all cases had a known history of contact with animals due to their nature of work: one of the cases is a butcher and the other three are shepherds. All cases were confirmed to have CCHF by laboratory analysis.

Though profiles are similar for the cases, there has been no epidemiological linkage between them. Each case comes from a different area (Moughataas) of the country representing three different wilayas: Trarza, Nouakchott-Sud, and Hodh el Gharbi. The latter wilaya borders Mali. As of 15 February 2022, a total of 31 contacts have been listed from the cases and nine tests have been conducted.

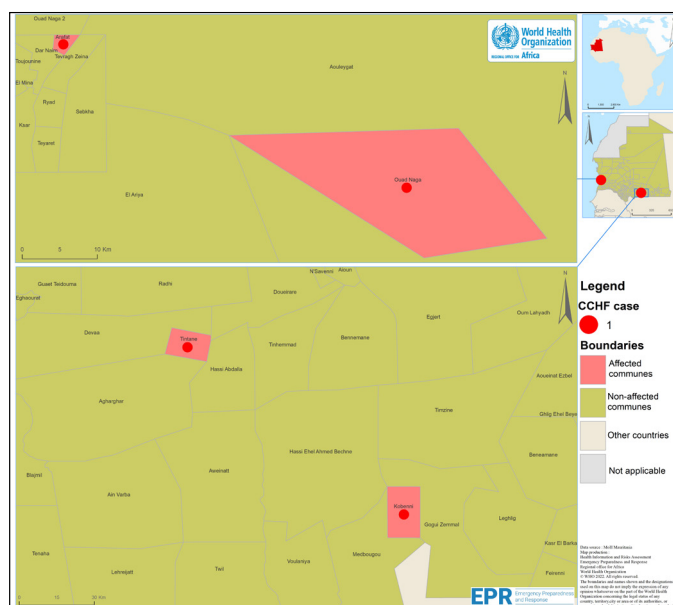
PUBLIC HEALTH ACTIONS

- Regular coordination meetings are conducted to make strategic decisions regarding the outbreak
- Response teams have been deployed to conduct investigations in affected wilayas
- Surveillance activities have been reinforced across affected areas
- Ongoing investigations in all areas where cases live including the listing of contacts for cases
- Infection, prevention and control measures have been reinforced in all health facilities
- Community sensitization in areas at risk is ongoing as it is an endemic disease in Mauritania
- Management of cases is being done in referral hospitals at the national and regional levels.

SITUATION INTERPRETATION

Four cases of CCHF have been confirmed in a relatively short period of time from different parts of Mauritania. This indicates potential widespread transmission of CCHF in an already

Distribution of Crimean Congo Haemorrhagic Fever outbreak in Mauritania, as of 20 February 2022.



endemic region. Continued monitoring and interventions need to be strategically focused for a disease that involves a One Health approach.

PROPOSED ACTIONS

- Enhance surveillance monitoring with a main focus on One Health initiatives since CCHF can be acquired by the exposure of infected ticks or through contact with infected animals.
- Nosocomial infections are also a possibility with CCHF and precautions should be taken at all health facilities in order to prevent infections among health care workers.
- Surveillance should be reinforced at points of entry and there should be good cross-border bilateral communication, especially with some of the cases coming from near the border with Mali.
- Risk communication should also be intensified since the risk groups are wide, ranging from agricultural, pastoral, health care workers, etc.

[Go to overview](#)

2

[Go to map of the outbreaks](#)

EVENT DESCRIPTION

During the week of 14 to 20 February 2022, the number of new COVID-19 cases in the WHO African Region decreased by 20.4% as compared to the number reported during the previous week. The number of new deaths increased by 23.0%. Across the region, over 28 677 new COVID-19 infections and 1 847 new deaths were reported from 37 and 24 countries, respectively.

In the past week, a total of 33 countries (72.0%) reported a decrease of 20% or more in the number of new cases (Table 1), although Congo, Côte d'Ivoire, Equatorial Guinea, Gabon, Togo, and Zimbabwe saw a 20% or more increase in weekly cases compared to the past week. Benin, Cameroon, Central African Republic, Gambia, Ghana, Lesotho, Liberia, and the United Republic of Tanzania did not report any new cases in the past seven days.

The top five countries recorded the highest number of new cases (24 123, 84.0%) with South Africa recording the highest number (16 736 new cases, 6.2% decrease, 28.0 new cases per 100 000 population); followed by Algeria (2 302 new cases, 39.0% decrease, 5.1 new cases per 100 000); Zimbabwe (1 971 new cases, 103.3% increase, 13.0 new cases per 100 000), Zambia (1 692 new cases, 26.3% decrease, 9.0 new cases per 100 000), and Botswana (1 422 new cases, 57.2% decrease, 59.0 new cases per 100 000).

For the period (14 to 20 February 2022), an increase in weekly COVID-19 deaths was observed in the African region as 1 847 deaths were reported compared to 1 507 recorded in the previous week. The highest numbers of new deaths were reported from South Africa (1 674 new deaths; 45.0% increase; 2.8 new deaths per 100 000 population), Algeria (68 new deaths; 18.0% decrease; 0.2 new deaths per 100 000), Madagascar (15 new deaths; 46.4% decrease; 0.1 new deaths per 100 000), Ethiopia (14 new deaths; 77.0% decrease; 0.0 new deaths per 100 000), and Zimbabwe (12 new deaths; 0.1% increase; 0.1 new deaths per 100 000).

Six countries met the criteria for resurgence (a 20% increase in new COVID-19 cases for a period of at least two consecutive weeks) that cases in the past week have reached 30% or more of the country's highest weekly number of cases.): Algeria, Botswana, Guinea-Bissau, Madagascar, Mauritius, and Seychelles.

As of 20 February 2022, nearly 8.0 million confirmed COVID-19 cases and 168 193 deaths have been reported in the WHO African Region, resulting in a CFR of 2.1%. More than 7.4 million recoveries have been recorded, giving a recovery rate of 93.0%.

Overall South Africa has recorded the highest number of COVID-19 cases in the region, with 3 658 547 cases (46.0% of all reported cases), followed by Ethiopia 468 345 (5.9%), Kenya 322 696 (4.1%), Zambia 311 194 (3.9%), and Algeria 264 054 (3.3%), accounting for (63.0%) 5 024 836 of all cases.

Similarly, most reported deaths occurred in South Africa, which accounts for 59.0% (98 667) of all deaths recorded in the region. Ethiopia has the second-highest number of deaths (7 438 deaths, 4.4%) followed by Algeria (6 797, 4.0%), Kenya (5 635, 3.4%)

and Zimbabwe (5 386, 3.2%), all accounting for 74.0% (123 923) of all deaths reported in the region.

Only Namibia and Kenya reported 23 and three new health worker infection, respectively, in the past week. Thus far, a cumulative total of 153 217 COVID-19 infections (2.0% of all cases) among health workers in the region, with South Africa accounting for 46.4% (71 113) of the total infections. Kenya (12 716, 8.3%), Algeria (11 936, 8.0%), Zimbabwe (6 015, 4.0%) and Namibia (5 316, 3.5%) have also recorded high numbers of health worker infections. Other countries reporting health worker infections are shown in Table 1. The United Republic of Tanzania (10.0%), Liberia (6.0%), Algeria (5.0%), Chad (4.0%), and Niger (4.0%) have the highest proportion of health worker infections by country. Only Eritrea has not reported any healthcare worker infections.

During the past week, the African continent marked 2 years of responding to the COVID-19 pandemic. To-date, a cumulative total of 11.4 million infections have been recorded on the continent. In addition, more than 247 644 deaths (CFR 2.4%) and more than 10.4 million people have recovered. The African continent accounts for 2.9% of global cases and 4.2% of global deaths.

Approximately 168 million people are fully vaccinated, or 12% of the African population. Eritrea has not yet begun a vaccination programme.

Regarding vaccine uptake, in the African region, four countries have fully vaccinated 5% to 10% of their populations: Gabon, Guinea, Senegal, and Sierra Leone. A total of 11 countries have fully vaccinated 2% to 5%: Burkina Faso, Cameroon, Ethiopia, Madagascar, Malawi, Mali, Niger, Nigeria, South Sudan, Tanzania, and Zambia, while three have fully vaccinated less than 2%: Burundi, Chad, and Democratic Republic of Congo.

Lack of funding and other operational challenges are driving low vaccine uptake in some countries:

- ▶ Burkina Faso, Chad, Sierra Leone, and South Sudan have fragile states or ongoing humanitarian emergencies that make it difficult to reach people with mobile vaccination teams.
- ▶ Democratic Republic of Congo, Ethiopia, and Nigeria have large and diverse populations. The vastness of these countries means they require more operational funding to reach their populations.
- ▶ Burundi and Tanzania started vaccinating later than other countries.
- ▶ Malawi, Uganda, and Zambia are experiencing low vaccine acceptance among populations due to experiences with vaccines having short shelf lives and expiring quickly.
- ▶ Health workers in all countries are fatigued. Vaccines that arrive with short shelf life put huge pressure on delivery strategies and systems, amid low demand.

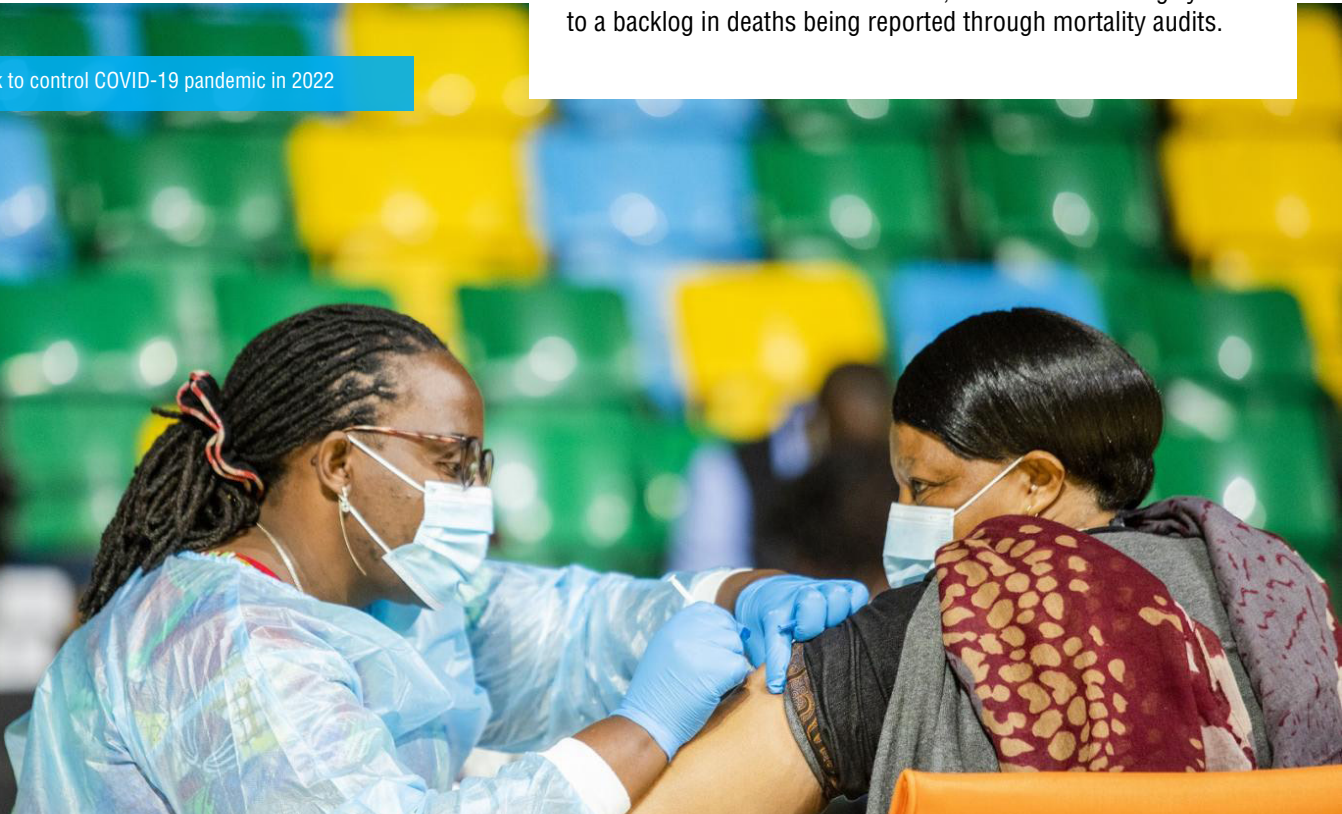
On 18 February 2022, WHO announced that the first six countries that will receive the technology needed to produce mRNA

vaccines on the African continent are Egypt, Kenya, Nigeria, Senegal, South Africa, and Tunisia. The global mRNA technology transfer hub was established in 2021 to support manufacturers in low- and middle-income countries to produce their own vaccines, ensuring that they have all the necessary operating procedures and know-how to manufacture mRNA vaccines at scale and according to international standards.

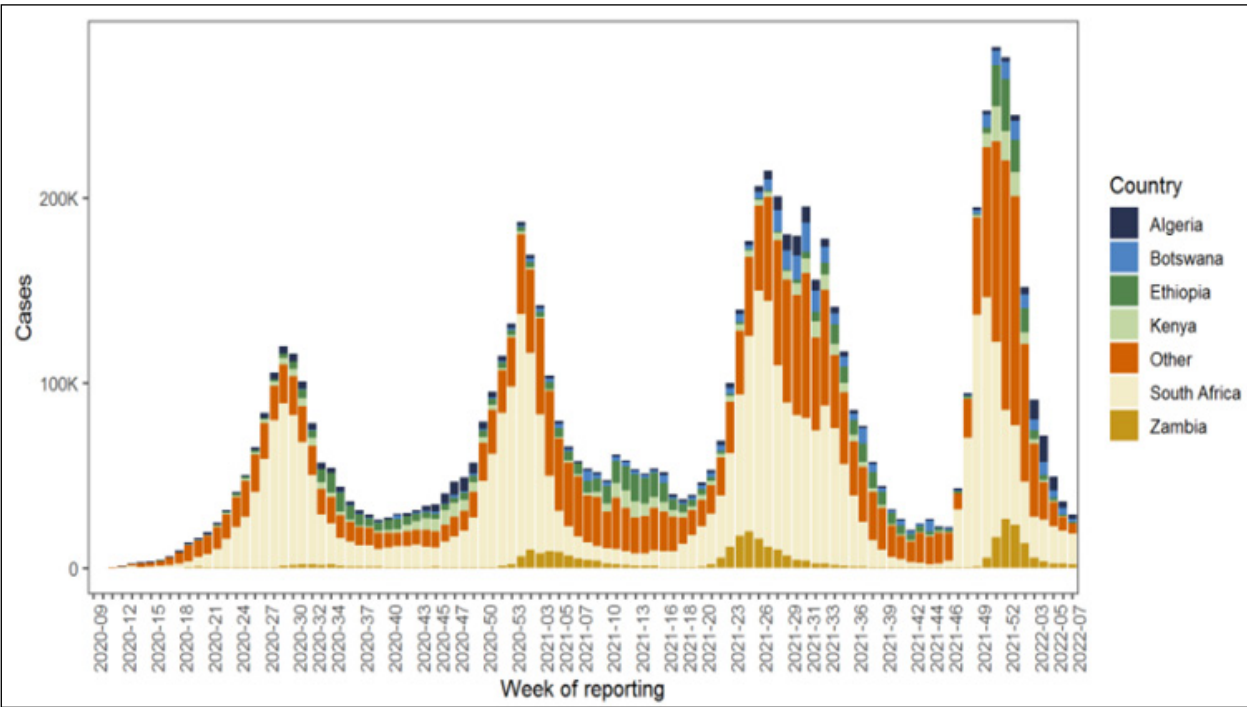
SITUATION INTERPRETATION

New weekly cases on the African continent dropped for another week. Only eight countries reported a significant increase in new cases when compared to the prior week. Although deaths increased overall, some countries reported decreases. South Africa has reported a spike in the number of weekly deaths for the second consecutive week. However, this increase is largely due to a backlog in deaths being reported through mortality audits.

Africa on track to control COVID-19 pandemic in 2022



The weekly distribution of confirmed cases of COVID-19 in the WHO African Region by week of reporting, 25 February 2020 – 20 February 2022 (n = 7 966 928)



New cases reported in the past seven days and cumulative totals by country: Data as of 20 February 2022 (7 966 928)

Country	Total Cases	New Cases	Percent change in new cases	Total Deaths	New Deaths	Percent change in new deaths	Health Worker infections
Algeria	264 054	2 302	-39.0	6 797	68	-18.1	11 936
Angola	98 638	124	-17.3	1 899	1	-50.0	939
Benin	26 567	0	-100.0	163	0	0.0	139
Botswana	261 913	1 422	-57.2	2 608	5	-50.0	2 082
Burkina Faso	20 751	26	-35.0	375	0	0.0	288
Burundi	38 011	88	-47.3	15	0	0.0	38
Cabo Verde	55 860	18	-55.0	400	0	-100.0	140
Cameroon	118 933	0	-100.0	1 918	0	-100.0	4 408
Central African Republic	14 187	0	-100.0	113	0	-100.0	51
Chad	7 216	0	0.0	190	0	0.0	292
Comoros	8 020	15	-63.4	160	0	0.0	155
Congo	23 925	51	155.0	377	2	0.0	303
Côte d'Ivoire	81 367	249	25.8	791	2	-33.3	1 913
Democratic Republic of the Congo	85 876	36	-62.9	1 335	0	-100.0	728
Equatorial Guinea	15 870	17	112.5	182	0	0.0	607
Eritrea	9 687	19	-38.7	103	0	-100.0	0
Eswatini	68 978	183	-24.4	1 388	5	0.0	1 193
Ethiopia	468 345	847	-11.7	7 438	14	-77.0	3 354
Gabon	47 484	85	129.7	303	1	0.0	345
Gambia	11 924	0	-100.0	365	0	0.0	142
Ghana	158 220	0	-100.0	1 433	0	-100.0	4 763
Guinea	36 354	25	-57.6	438	2	-50.0	682
Guinea-Bissau	7 907	58	-24.7	166	2	-66.7	23
Kenya	322 696	223	-40.8	5 635	4	-60.0	12 716
Lesotho	32 434	0	-100.0	696	0	-100.0	473
Liberia	7 360	0	-100.0	290	0	0.0	418
Madagascar	63 433	589	-58.2	1 350	15	-46.4	70
Malawi	85 219	194	-8.5	2 606	10	-60.0	3 026
Mali	30 341	75	-31.2	720	4	300.0	87
Mauritania	58 616	47	-57.7	976	4	-20.0	24
Mauritius	70 862	0	0.0	786		0.0	30
Mozambique	224 903	200	-45.1	2 189	0	-100.0	4 779
Namibia	156 913	103	-71.9	3 997	2	-86.7	5 316
Niger	8 738	27	8.0	303	0	-100.0	355
Nigeria	254 243	227	-21.5	3 142	1	-50.0	3 175
Rwanda	129 372	74	-57.2	1 456	6	50.0	682
Sao Tome and Principe	5 926	6	-25.0	71	0	0.0	102
Senegal	85 564	152	-26.2	1 958	1	0.0	419
Seychelles	39 128	423	-30.8	151	1	-66.7	945
Sierra Leone	7 661	9	-62.5	125	0	0.0	269
South Africa	3 658 547	16 736	-6.2	98 667	1674	44.6	71 113
South Sudan	16 936	39	-15.2	137	0	0.0	294
Togo	36 738	78	25.8	271	0	-100.0	891
Uganda	163 116	247	-42.2	3 585	5	-58.3	3 025
United Republic of Tanzania	33 549	0	-100.0	796	0	-100.0	3 351
Zambia	311 194	1 692	-26.3	3 943	6	-14.3	1 121
Zimbabwe	233 352	1 971	101.3	5 386	12	0.0	6 015
Cumulative Cases (N=47)	7 966 928	28 677	-20.4	168 193	1 708	22.6	153 217

*Total cases includes one probable case from Democratic Republic of the Congo

[Go to overview](#)

5

[Go to map of the outbreaks](#)

EVENT DESCRIPTION

On 9 February 2022, Togolese health authorities declared a measles outbreak after confirmation at the National Referral Laboratory for Epidemic prone Diseases. The suspected cases were reported from health districts of Agoe, Ave, Bassar, Golfe and Zio. As of 11 February 2022, six health districts of Zio, Agoe, Golfe, Kpélé, Tchoudjo and Bassar are experiencing measles outbreak, with a cumulative number of 334 suspected cases, 73 confirmed cases and 0 death (case fatality ratio (CFR=0.0%).

The six affected health districts are from five medical regions (Maritime, Grand-Lomé, Plateaux, Centrale, and Kara) out of six in the country. Zio district has reported the highest number of cases at 213 (63.7%), followed by Bassar district with 40 cases (11.9%), and Agoe district with 28 cases (8.4%).

The measles outbreak was first reported in Zio district in early November 2021. The index case is a 30-month-old girl who consulted at the Tsévié Polyclinic for fever, lack of appetite, skin rash, and intense general body weakness on 25 November 2021. The index case had an onset of symptoms on 20 November 2021. A sample was collected from this case and laboratory results confirmed her positive for Measles IgM on 30 November 2021. Additional suspected measles cases have been reported from Zio district and other districts from December 2021 until February 2022.

Preliminary investigations found no epidemiological links among cases reported from the different affected districts. Basing on anecdotal reports, the first case from Bassar district has been imported from Nigeria. Among the 73 confirmed cases, eight were vaccinated though only five cases received two doses of measles vaccine, 35 (47.9%) have an unknown vaccination status, and 29 (39.7%) are unvaccinated.

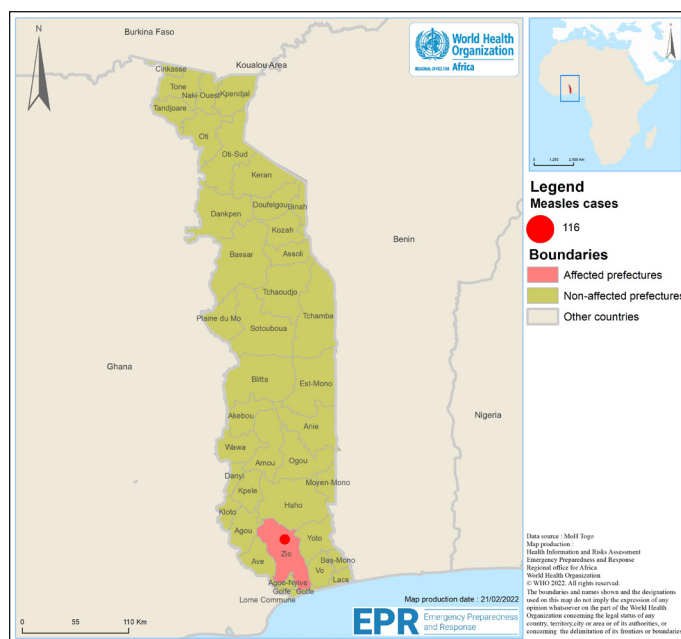
PUBLIC HEALTH ACTIONS

- A rapid risk assessment for the ongoing measles outbreak has been conducted by the Ministry of Health.
- The rapid investigations in each affected district have been conducted
- Measles vaccination responses around cases has been also conducted.
- The country has submitted to the Global Alliance for Vaccines and Immunization (GAVI) a request for measles vaccine for a catch-up measles vaccination campaign targeting 1 468 732 children aged between nine to 59 months.

SITUATION INTERPRETATION

Although no death has been reported to-date, the speed at which this measles outbreak is spreading is concerning. Within about one month period, the number of affected districts increased from one (Zio district) to six. There is therefore an urgent need to control this outbreak. Among the confirmed cases, the measles vaccination coverage is very low with only 6.8% of cases that received two doses of the measles containing vaccine.

Distribution of measles outbreak in Togo, as 11 February 2022



PROPOSED ACTIONS

- A good vaccination coverage against measles remains the key for outbreaks prevention and control. The required efforts and resources should thus be deployed to improve the routine and supplementary immunization coverages.
- While implementing control measures for the ongoing measles outbreak, it is also essential to strengthen the measles and rubella elimination program activities for the country.

All events currently being monitored by WHO AFRO

Country	Event	Grade	Date notified to WCO	Start of reporting period	End of reporting period	Total cases	Cases Confirmed	Deaths	CFR
New Events									
Democratic Republic of the Congo	Suspected Anthrax	Ungraded	17-Feb-2022	17-Feb-2022	17-Feb-2022	11		2	18.2%
Suspected cases of anthrax were notified in the Kalonge health zone, Kalehe territory not far from the Kahuzi Biega national park. On 30 January 2022, a family prepared guinea pig meat to serve a visitor. A total of 11 people from three different families ate this meat. All 11 people who ate the meat presented a clinical picture made diarrhoea, vomiting, abdominal pain, fatigue, and dehydration. Two people, one of 12 years old and another of 15 years old, died the same day (CFR 18.2%) presenting severe dehydration. Nine people among the 11 were admitted, recovered, and discharged from the hospital. The results of the laboratory analyzes carried out are still awaited. Currently, a team from the regional ministry of health is in the affected health zone for in-depth investigation.									
Ethiopia	Drought/food insecurity	Ungraded	17-Feb-2022	1-Jan-22	31-Jan-22	-	-	-	-
Ethiopia is experiencing a prolonged drought after three consecutive failed rainy seasons since late 2020 affecting 6.8 million people living in Oromia, SNNP (Southern Nations, Nationalities, and Peoples), Southwest and Somali: several areas in southern and southeastern Ethiopia, including in the regions of Somali (10 zones), Oromia (8 zones), Southwest (1 zone) and SNNP (7 zones).									
Ethiopia	Chikungunya	Ungraded	17-Feb-2022	12-Jan-22	9-Feb-2022	311	3	0	0.0%
On 17 January 2022, Chikungunya Outbreak was confirmed in Dolo ado district of Liben zone, Somali region. A total of 311 suspected cases are reported, of which three cases were confirmed by PCR at Ethiopian Public Health Institute (EPHI) laboratory. No deaths were reported.									
Ethiopia	Supsected Meningitis	Ungraded	17-Feb-2022	12-Dec-2021	23-Jan-22	649		8	1.2%
Between week 49 of 2021 ending 12 December and week 3 of 2022 ending 23 January, a cumulative number of 649 suspected cases of meningitis and eight deaths (CFR 1.2 %) were reported from 77 districts (woredas) in Ethiopia. Between 3 to 30 January 2022, 332 meningitis suspected cases and one death (CFR 0.3%) were reported, with 28 districts crossing the alert threshold and one district (Jenela district in Harari region) crossing the epidemic threshold. Investigations are still ongoing including laboratory confirmation of meningitis.									
Uganda	Anthrax	Ungraded	14-Feb-2022	12-Feb-2022	19-Feb-2022	1	1	0	0.0%
A 46-year-old male cattle rancher presented with skin lesions on his left thumb for two days after contact with a dead bull in his kraal on 28 January 2021. Previously, there had been three cattle deaths in the same kraal within a week. Samples taken tested positive for anthrax by PCR.									
Ongoing Events									
Algeria	COVID-19	Grade 3	25-Feb-2020	25-Feb-2020	20-Feb-2022	264 054	264 054	6 797	2.6%
From 25 February 2020 to 13 February 2022, a total of 264 054 confirmed cases of COVID-19 with 6 797 deaths (CFR 2.6%) have been reported from Algeria. A total of 176 673 cases have recovered.									
Angola	COVID-19	Grade 3	21-Mar-20	21-Mar-20	20-Feb-2022	98 638	98 638	1 899	1.9%
The first COVID-19 confirmed case was reported in Angola on 21 March 2020. As of 20 February 2022, a total of 98 638 confirmed COVID-19 cases have been reported in the country with 1 899 deaths and 96 569 recoveries.									
Angola	Poliomyelitis (cVDPV2)	Grade 2	8-May-2019	1-Jan-19	20-Feb-2022	133	133	0	0.0%
No case of circulating vaccine-derived poliovirus type 2 (cVDPV2) was reported this week. There were 3 cases reported in 2020. The total number of cases reported in 2019 remains 138. These cases are from several outbreaks which occurred in 2019.									
Benin	Cholera	Grade 1	28-Mar-21	28-Mar-21	30-Jan-22	1 616	44	20	1.2%
Since week 12 (ending 28 March 2021) of 2021, cases of cholera have been reported in Benin. As of 30 January 2022, a total of 1 616 cases with 20 deaths (CFR 1.2%) are reported.									
Benin	COVID-19	Grade 3	17-Mar-20	16-Mar-20	13-Feb-2022	26 567	26 567	163	0.6%
The Ministry of Health in Benin announced the first confirmed case of COVID-19 on 16 March 2020. As of 13 February 2022, a total of 26 567 cases have been reported in the country with 163 deaths and 26 353 recoveries.									
Benin	Poliomyelitis (cVDPV2)	Grade 2	8-Aug-2019	8-Aug-2019	20-Feb-2022	14	14	0	0.0%
No new cases of circulating vaccine-derived poliovirus type 2 (cVDPV2) were reported this week. Three cases were reported in 2021 and 2020, and 8 in 2019. These cases are all linked to the Jigawa outbreak in Nigeria.									
Botswana	COVID-19	Grade 3	30-Mar-20	28-Mar-20	14-Feb-2022	261 913	261 913	2 608	1.0%
On 30 March 2020, the Minister of Health and Wellness in Botswana reported three confirmed cases of COVID-19. As of 14 February 2022, a total of 261 913 confirmed COVID-19 cases were reported in the country including 2 608 deaths and 256 438 recovered cases.									
Burkina Faso	Humanitarian crisis	Grade 2	1-Jan-19	1-Jan-19	17-Jan-22	-	-	-	-
Since 2015, the security situation in the Sahel and East of Burkina Faso has gradually deteriorated as a result of attacks by armed groups. This has resulted in mass displacement of over 1.57 million internally displaced persons as of 31 December 2021 in all 13 regions. According to OCHA, 3.5 million Burkinabe will need humanitarian aid in 2022, including 2.6 million severely food insecure during the 2022 lean season, with over 436,000 in the pre-famine phase. Non-state armed groups attacks are worsening the security situation, causing displacements and producing needs for the affected population, including food, water, shelter, and psycho-social support.									

Country	Event	Grade	Date notified to WCO	Start of reporting period	End of reporting period	Total cases	Cases Confirmed	Deaths	CFR
Burkina Faso	COVID-19	Grade 3	10-Mar-20	9-Mar-20	11-Feb-2022	20 716	20 716	375	1.8%
Between 9 March 2020 and 18 February 2022, a total of 20 751 confirmed cases of COVID-19 with 375 deaths and 20 309 recoveries have been reported from Burkina Faso.									
Burkina Faso	Poliomyelitis (cVDPV2)	Grade 2	1-Jan-20	1-Jan-20	20-Feb-2022	67	67	0	0.0%
No new cases of circulating vaccine-derived poliovirus type 2 (cVDPV2) were reported this week. There were two cases reported in 2021, and 65 in 2020. The country is affected by different outbreaks, one linked to the Jigawa outbreak in Nigeria and one to the Savanes outbreak in Togo.									
Burundi	COVID-19	Grade 3	31-Mar-20	18-Mar-20	19-Feb-2022	38 011	38 011	15	0.0%
On 31 March 2020, the Minister of Health in Burundi reported the first two confirmed cases of COVID-19. As of 19 February 2022, the total number of confirmed COVID-19 cases is 38 011, including 15 deaths and 37 911 recovered.									
Cameroon	Humanitarian crisis (Far North, North, Adamawa & East)	Protracted 2	31-Dec-2013	27-Jun-2017	31-Jan-22	-	-	-	-
According to UNHCR and OCHA reports, an estimated 1.2 million people need assistance, 357 631 people are internally displaced as of 31 Jan 2022. Following the lifting of security restrictions in Kousséri, the security situation in the Far North region of Cameroon has remained calm and stable since 20 January.									
Cameroon	Humanitarian crisis (NW & SW)	Protracted 2	1-Oct-16	27-Jun-2018	31-Jan-22	-	-	-	-
According to reports from UNHCR, an estimated 579 136 IDPs have been registered as of 31 Jan 2022. There have continued to be reports of targeted attacks on various groups such as traditional leaders, school staff, students, and humanitarian workers. Schools resumed session, but teachers and students faced attacks. There has been an increase in the use of improvised explosive devices (IEDs), carjacking, and clashes between security forces and NSAGs, leading to civilian population displacement. There were also 467 550 refugees as of 31 Jan 2022, of which more than 343 548 (73.5%) arrived from Central African Republic.									
Cameroon	Cholera	Grade 2	1-Jan-21	5-Aug-2021	30-Jan-22	1 102	9	28	2.5%
Since the beginning of 2021 up to 30 January 2022, a total of 1102 suspected cases of Cholera including 9 confirmed and 28 deaths (CFR 3.4%) have been reported in Cameroon. The intensification of disease surveillance as well as the management of cases are ongoing.									
Cameroon	COVID-19	Grade 3	6-Mar-20	6-Mar-20	9-Feb-2022	118 933	118 933	1 918	1.6%
The Cameroon Ministry of Health announced the confirmation of the first COVID-19 case on 6 March 2020. As of 9 February 2022, a total of 118 933 cases have been reported, including 1 918 deaths and 116 473 recoveries.									
Cameroon	Measles	Ungraded	2-Apr-2019	1-Jan-21	5-Dec-2021	1 095	663	8	0.7%
From week 1 to 48 (ending 5 December), 2021, Cameroon has reported 1 095 measles suspected cases with 8 deaths (CFR 0.7%). Of the 1 000 investigated cases, 663 were positive including 268 cases IgM+, 98 clinically compatible and 297 epidemiologically linked; 66% of children with measles are under 5 years of age and only 38% of suspected measles cases and 32% of confirmed measles cases are vaccinated with at least 1 dose.									
Cameroon	Poliomyelitis (cVDPV2)	Grade 2	1-Jan-20	1-Jan-20	16-Feb-2022	10	10	0	0.0%
No case of circulating vaccine-derived poliovirus type 2 (cVDPV2) was reported this week. There are three cases reported in 2021 and seven cases in 2020.									
Cameroon	Yellow fever	Grade 2	7-Feb-2021	4-Jan-21	31-Jan-22	40	29	8	20.0%
From 1 January 2021 to 31 January 2022, a total of 38 presumptive cases of yellow fever tested positive by plaque reduction neutralization test (PRNT) and three by PCR at the Centre Pasteur Cameroun, of which seven deaths were recorded. These cases originated from nine different regions with a total of 25 health districts (HDs) affected: Adamaoua region, Central region, East region, Far North region, Littoral region, North region, North-West region, South region, and West region. Some of the PRNT-positive cases had a history of vaccination against yellow fever.									
Cape Verde	COVID-19	Grade 3	19-Mar-20	18-Mar-20	19-Feb-2022	55 860	55 860	400	0.7%
The first COVID-19 confirmed case was reported in Cabo Verde on 19 March 2020. As of 19 February 2022, a total of 55 860 confirmed COVID-19 cases including 400 deaths and 55 393 recoveries were reported in the country.									
Central African Republic	Humanitarian crisis	Protracted 2	11-Dec-2013	11-Dec-2013	17-Jan-22	-	-	-	-
According to OCHA figures, 3.1 million people (63% of the total population) are in need of assistance and protection in 2022. There are 670K people that are internally displaced as of 30 Nov 2021 and 744K persons are refugees in neighbouring countries. Civilians are still the main victims of violence. On 11 January 2022, an IDP camp was partially destroyed leaving 3 000 people in need of shelter, food, and water. Food insecurity is also estimated to be 2.4 million people in 2022.									
Central African Republic	COVID-19	Grade 3	14-Mar-20	14-Mar-20	8-Feb-2022	14 187	14 187	113	0.8%
The Ministry of Health and population announced the confirmation of the first COVID-19 case in the Central African Republic on 14 March 2020. As of 8 February 2022, a total of 14 187 confirmed cases, 113 deaths and 12 018 recovered were reported.									
Central African Republic	Measles	Grade 2	15-Mar-19	1-Jan-21	15-Dec-2021	2 328	283	9	0.4%
From 1 January to 15 December 2021 : 2 328 suspected cases have been reported, 283 confirmed cases (75 IgM+ cases, 196 by epidemiological link and 12 compatible cases) and 9 deaths (CFR:0.4%). Ten health districts out of 35 have reached the epidemic threshold (Bossebelé, Berbérati, Sangha-Mbaéré; Nanga-Boguila, Batangafo, Mbaiki, Nana Gebrizi and Vakaga); 49% of children are less than 5 years of age; 42% were not vaccinated. From the beginning of outbreak in 2019 to 19 August 2021, a total of 35 468 suspected cases have been notified and 197 deaths (CFR:0.6%) within affected districts.									

Country	Event	Grade	Date notified to WCO	Start of reporting period	End of reporting period	Total cases	Cases Confirmed	Deaths	CFR
Central African Republic	Yellow fever	Grade 2	14-Sep-21	1-Apr-2021	15-Feb-2022	17	9	1	5.9%
On 3 August 2021, an 18-month-old girl from Mala village in the Kemo district, Central African Republic, tested positive for yellow fever by plaque reduction neutralization test at the Centre Pasteur Cameroun (CPC). As of 15 February 2022, a total of 17 probable cases (IgM positive) were reported of which nine were confirmed at the regional reference laboratory.									
Chad	COVID-19	Grade 3	19-Mar-20	19-Mar-20	7-Feb-2022	7 214	7 214	190	2.6%
The first COVID-19 confirmed case was reported in Chad on 19 March 2020. As of 7 February 2022, a total of 7 214 confirmed COVID-19 cases were reported in the country including 190 deaths.									
Chad	Hepatitis E	Ungraded	4-Nov-21	1-Oct-21	30-Nov-21	385	12	2	0.5%
Hepatitis E outbreak had been declared by Chadian health authorities mid-November 2021 in Sategui health area, Lai health district in the Tandjile region. As of 30 Nov 2021, there have been 385 suspected cases and 2 deaths (CFR 0.5%) reported. Among those affected, the majority have been men with 219 cases (57%) and the most affected age group has been less than 10 years of age with 90 cases (23.4%).									
Chad	Leishmaniasis	Ungraded	8-Sep-20	16-Oct-20	30-Nov-21	161	15	14	8.7%
Since 1 January 2018, a total of 161 cases have been reported by 4 provinces (N'Djamena, Borkou, Tibesti and Ouaddai) and 14 deaths (CFR 8.7%). For the year 2020 the country registered 74 cases including 4 deaths. Since the beginning of 2021 up to 30 November 2021, 54 cases have been reported including 8 deaths (CFR 14.8%) .									
Chad	Measles	Ungraded	24-May-2018	1-Jan-21	5-Dec-2021	2 518	704	15	0.6%
From 1 January 2021 up to week 48 (ending 5 December 2021), a total of 2 518 suspected cases, 704 confirmed and 15 deaths (CFR 0.6%) have been reported from 26 health districts. In 2020, Chad reported 8 785 cases, with 363 confirmed and 41 deaths.									
Chad	Poliomyelitis (cVDPV2)	Grade 2	18-Oct-19	9-Sep-19	16-Feb-2022	114	114	0	0.0%
No new cases of circulating vaccine-derived poliovirus type 2 (cVDPV2) were reported this week. One cVDPV2 positive environmental sample was reported in N'djamena. This positive environmental sample is linked to the Zamfara outbreak in Nigeria. There were no cases reported in 2021. There were 106 cVDPV2 cases reported in 2020 from three different outbreaks. There were 8 cases reported in 2019. The risk of further cVDPV2 spread across the Lake Chad subregion remains high.									
Chad	Yellow fever	Grade 2	13-Nov-21	1-Nov-21	15-Feb-2022	58	17	0	0.0%
On 13 November 2021, the Institut Pasteur in Dakar shared the results of 17 samples of yellow fever cases from the Mandoul district, Chad, of which two tested PCR positive, six were IgM positive with cross-reactions with other flaviviruses, and six other IgM positive without cross-reactions. As of 15 February 2022, a total of 58 yellow fever IgM positive cases were reported from seven provinces (Mandoul, Guéra, Mayo Kebbi Ouest, Moyen Chari, and le Lac), including nine confirmed cases by PCR and eight by plaque reduction neutralization test (PRNT).									
Comoros	COVID-19	Grade 3	30-Apr-2020	30-Apr-2020	19-Feb-2022	8 020	8 020	160	2.0%
The first case of confirmed COVID-19 was notified on 30 April 2020 in Comoros. As of 19 February 2022, a total of 8 020 confirmed COVID-19 cases, including 160 deaths and 7 812 recoveries were reported in the country.									
Congo	Floods	Ungraded	10-Jan-22	29-Nov-21	7-Jan-22	108 173	-	0	0.0%
Following the heavy rains since September 2021, the northern part of the country is affected with floods. Authorities declared a state of humanitarian disaster on 29 November 2021. Four departments are affected: Likouala; Cuvette; Sangha and Plateaux. As of 7 January 2022, 108 173 people affected (22 770 households), no information on deaths. Authorities are seeking supports from partners in term of food, non-food items, essentials medicines etc									
Congo	COVID-19	Grade 3	14-Mar-20	14-Mar-20	18-Feb-2022	23 863	23 863	377	1.6%
The Government of Congo announced the confirmation of the first case of COVID-19 in Congo on 14 March 2020. As of 18 February 2022, a total of 23 863 cases including 377 deaths and 22 245 recovered cases have been reported in the country.									
Congo	Poliomyelitis (cVDPV2)	Grade 2		29-Jan-21	16-Feb-2022	4	4	0	0.0%
No new cases of circulating vaccine-derived poliovirus type 2 (cVDPV2) were reported this week. Two cases were reported in 2020 as well as in 2021.									
Côte d'Ivoire	COVID-19	Grade 3	11-Mar-20	11-Mar-20	20-Feb-2022	81 367	81 367	791	1.0%
Since 11 March 2020, a total of 81 367 confirmed cases of COVID-19 have been reported from Côte d'Ivoire including 791 deaths, and a total of 79 263 recoveries.									
Côte d'Ivoire	Poliomyelitis (cVDPV2)	Grade 2	29-Oct-19	29-Oct-19	16-Feb-2022	64	64	0	0.0%
No case of circulating vaccine-derived poliovirus type 2 (cVDPV2) was reported this week. There are no reported cases in 2021. There are 64 cases reported in 2020.									
Côte d'Ivoire	Yellow fever	Grade 2	14-Sep-21	13-Aug-2021	15-Feb-2022	43	13	0	0.0%
On 13 August 2021, five yellow fever cases tested positive by plaque reduction neutralization test (PRNT) at Institut Pasteur in Dakar. Based on differential tests returned on 6 September 2021, the results of three cases are consistent with a recent yellow fever infection. As of 15 February 2022, a total of 43 cases tested IgM positive of which 13 were confirmed by PRNT.									
Democratic Republic of the Congo	Humanitarian crisis	Protracted 3	20-Dec-2016	17-Apr-2017	1-Feb-2022	-	-	-	-
As of 31 Jan 2022, there are an estimated 5.5 million people internally displaced, 517 140 new refugees and asylum seekers, 1.2 million returnees, and 27 million people need emergency food assistance in the entire country. Additionally, 8.9 million need health assistance. In the Bambu health zone, more than 24K people left in three phases from 9-30 Jan 2022 in several localities. On 29 Jan 2022, Zengo health area experienced an incursion by militiamen looting homes and health centres (looting of equipment, furniture, supplies, mattresses, medicines and others). Significant needs such as food and health care remain to be satisfied.									

Country	Event	Grade	Date notified to WCO	Start of reporting period	End of reporting period	Total cases	Cases Confirmed	Deaths	CFR
Democratic Republic of the Congo	Cholera	Grade 3	16-Jan-15	1-Jan-22	30-Jan-22	2 168	-	27	1.2%
In 2022, from epidemiological week 1 to 4 (ending 31 January 2022), 2 168 suspected cholera cases including 27 deaths (CFR:1.2%) were recorded in 28 health zones across seven provinces of the Democratic Republic of the Congo, an increase of more than 100% compared to the same period in 2021 (604 cases).									
Democratic Republic of the Congo	COVID-19	Grade 3	10-Mar-20	10-Mar-20	15-Feb-2022	85 877	85 875	1 335	1.6%
Since the start of the COVID-19 outbreak, declared on 10 March 2020, a total of 85 875 confirmed cases and two probable case, including 1 335 deaths have been reported. A total of 64 656 people have recovered. The number of recoveries cases has been adjusted									
Democratic Republic of the Congo	Measles	Ungraded	12-Oct-21	1-Jan-22	26-Jan-22	993	51	18	1.8%
Since early January 2022, 993 measles suspected cases and 18 deaths have been reported; 51 of 83 suspected cases investigated became positive for measles IgM. In 2021, up to epi week 48 (ending 15 December) 55 940 suspected measles cases and 825 deaths (CFR 1.5%) were reported. The outbreak has been confirmed in 93 health districts across 23 affected provinces including the capital of Kinshasa. A total of 3 079 suspected cases was investigated, 1 271 cases are IgM + for measles among which 64% are children under five and 29% known to be vaccinated, half of them have an unknown vaccination status, 72% of measles confirmed cases are either zero dose or unknown vaccination status. A total of 483 cases are IgM+ of rubella among which 94.2% are more than 14 years old.									
Democratic Republic of the Congo	Monkeypox	Ungraded	n/a	1-Jan-20	30-Jan-22	9 593	39	326	3.4%
Between epidemiological weeks 1-4 of 2022, 286 cases have been reported with 21 deaths (CFR 7.3%). Compared to weeks 1-4 in 2021, 272 cases were reported with 6 deaths (CFR 2.2%). During 2021, a total of 3 091 suspected cases including 83 deaths (CFR 2.7%) were reported. During 2020, a total of 6 216 suspected cases including 222 deaths (CFR 3.6%) were reported.									
Democratic Republic of the Congo	Plague	Ungraded	12-Mar-19	1-Jan-20	30-Jan-22	600	-	45	7.5%
Between epidemiological weeks 1-4 of 2022, 1 case of plague has been reported with no deaths. Compared to weeks 1-4 in 2021, 61 cases were reported with 1 death. During 2021, a total of 138 suspected cases including 14 deaths (CFR 10.1%) were reported. During 2020, a total of 461 suspected cases including 31 deaths (CFR 6.7%) were reported.									
Democratic Republic of the Congo	Poliomyelitis (cVDPV2)	Grade 2	26-Feb-2021	1-Jan-21	16-Feb-2022	25	25	0	0.0%
No case of circulating vaccine-derived poliovirus type 2 (cVDPV2) was reported this week. The total number of 2021 cases remains at 25.									
Democratic Republic of the Congo	Typhoid fever	Ungraded	1-Jul-2021	1-Jan-21	30-Jan-22	142 383	-	45	0.0%
In 2022, from epidemiological week 1 to 4 (ending 31 January 2022), 142 383 suspected cases of typhoid fever including 45 deaths were recorded in the Democratic Republic of the Congo. In 2021, from Epi week 1 to 49, 1 380 955 suspected cases of typhoid fever have been reported including 502 deaths (CFR 0.03%).									
Democratic Republic of the Congo	Yellow Fever	Grade 2	21-Apr-2021	21-Apr-2021	21-Nov-21	2	2	0	0.0%
On 18 July 2021, two yellow fever cases tested positive by Plaque Reduction Neutralization Test (PRNT) at Centre Pasteur in Cameroon (CPC). The first case is a 34-year-old male from the Abuzi health zone, North Ubangi province, Democratic Republic of the Congo whose date of symptom onset was 20 February 2021 with fever, vomiting, abdominal pain, back pain and physical asthenia. Jaundice appeared on 25 February. The second case is a 47-year-old female unvaccinated against yellow fever from Ango health zone, Bas Uele province. He first exhibited symptoms on 7 May 2021. As of 21 November 2021, confirmatory results are pending for six additional presumptive positive cases.									
Equatorial Guinea	COVID-19	Grade 3	14-Mar-20	14-Mar-20	16-Feb-2022	15 870	15 870	182	1.1%
The Ministry of Health and Welfare announced the first confirmed COVID-19 case on 14 March 2020. As of 16 February 2022, a total of 15 870 cases have been reported in the country with 182 deaths and 15 620 recoveries.									
Eritrea	COVID-19	Grade 3	21-Mar-20	21-Mar-20	20-Feb-2022	9 687	9 687	103	1.1%
The first COVID-19 confirmed case was reported in Eritrea on 21 March 2020. As of 20 February 2022, a total of 9 687 confirmed COVID-19 cases with 103 deaths were reported in the country. A total of 9 555 patients have recovered from the disease.									
Eswatini	COVID-19	Grade 3	13-Mar-20	13-Mar-20	20-Feb-2022	68 978	68 978	1 388	2.0%
The first case of COVID-19 was confirmed in the kingdom of Eswatini on 13 March 2020. As of 20 February 2022, a total of 68 978 cases have been reported in the country including 67 420 recoveries. A total of 1 388 associated deaths have been reported.									

Country	Event	Grade	Date notified to WCO	Start of reporting period	End of reporting period	Total cases	Cases Confirmed	Deaths	CFR
Ethiopia	Humanitarian crisis (Conflict in Tigray)	Grade 3	4-Nov-20	4-Nov-20	17-Feb-2022	-	-	-	-
The security situation in the country remains volatile, affecting civilians and limiting humanitarian aid deliverance. Adequate communication, electricity, and banking services remain intermittent. The conflict in the Tigray area has been spilling over into the Afar and Amhara regions for some time but heavy clashes were reported along the border in both regions recently. In the Afar region, fighting has caused 200K people to be displaced. Due to the ongoing conflict, many health facilities in the region are unfunctional, but nine health partners have been providing healthcare services through mobile health and nutrition teams. On 24 Jan 2022, 3.5 metric tonnes of medication were delivered into Mekelle which will go to primary health care and nutrition programs and is said to benefit an estimated 35K people. More supplies are expected, however, humanitarian partners are unable to distribute them due to fuel shortages in the area. Many partners have scaled down operations due to the lack of supplies and resources.									
Ethiopia	Cholera	Grade 2	31-Aug-2021	31-Aug-2021	31-Jan-22	674	2	7	1.0%
The outbreak of cholera is ongoing in Oromia and Somali regions. The first case was reported on 31 August 2021. As of 31 January 2022, a total of 674 cases with 7 associated death (CFR 1.0%), are reported so far. Five sample were tested and two were positive for cholera. Response activities are ongoing including outbreak investigation, case management, cholera supplies delivery.									
Ethiopia	COVID-19	Grade 3	13-Mar-20	13-Mar-20	20-Feb-2022	468 345	468 345	7 438	1.6%
Since the confirmation of the first case on 13 March 2020, Ethiopia has confirmed a total of 467 498 cases of COVID-19 as of 20 February 2022, with 7 438 deaths and 409 675 recoveries.									
Ethiopia	Measles	Ungraded	14-Jan-17	1-Jan-22	9-Feb-2022	1 590		13	0.8%
An active measles outbreak is ongoing in Ethiopia since the beginning of January 2022. Three regions (Southern Nations, Nationalities, and Peoples' Region (SNNPR), Oromia and Somali) are most affected so far with a total of 1590 cases and 13 deaths (case fatality ration (CFR)= 0.8%) reported from these 3 regions. As of 9 February 2022, the SNNPR region has reported more cases with 1005 cases (63.2%) followed by Somali region with 495 cases (31.1%) then Oromia, 90 cases (5.7%).									
Ethiopia	Poliomyelitis (cVDPV2)	Grade 2	24-Jun-2019	20-May-2019	20-Feb-2022	75	75	0	0.0%
No case of circulating vaccine-derived poliovirus type 2 (cVDPV2) was reported this week. Ten cases were reported in 2021. The total number of cases for 2020 is 38 and 2019 is 15.									
Gabon	COVID-19	Grade 3	12-Mar-20	12-Mar-20	17-Feb-2022	47 484	47 484	303	0.6%
On 12 March 2020, the Ministry of Health announced the confirmation of the first COVID-19 case in the country. As of 17 February 2022, a total of 47 484 cases including 303 deaths and 44 999 recoveries have been reported in the country.									
Gabon	Yellow fever	Ungraded	12-Feb-2022	17-Sep-21	15-Jan-22	1	1	1	100.0%
On 24 January 2022, a case of yellow fever tested positive by seroneutralization at the Institut Pasteur in Dakar. The patient was a 42-year-old male from the Ogooué-Maritime province in Gabon. He was reportedly not vaccinated against yellow fever. He presented with jaundice on 17 September 2022 and died on 23 September 2021 in Port Gentil.									
Gambia	COVID-19	Grade 3	17-Mar-20	17-Mar-20	13-Feb-2022	11 924	11 924	365	3.1%
The first COVID-19 confirmed case was reported in the Gambia on 17 March 2020. As of 13 February 2022, a total of 11 924 confirmed COVID-19 cases including 365 deaths, and 11 554 recoveries have been reported in the country.									
Ghana	Explosion accident	Ungraded	20-Jan-22	20-Jan-22	22-Jan-22	984		13	1.3%
An explosion accident involving a vehicle transporting mining explosives occurred on 20 January 2022. The incident occurred in Apatikrom village near the mining town of Bogoso in the Prestea-Huni Valley district in the Western Region. The transport vehicle was involved in a road traffic accident with a motorcycle and subsequently caught fire resulting in the explosion which essentially destroyed the entire Apatikrom and resulted in several casualties. As of 22 January 2021, based on data from the National Disaster Management Organization (NADMO) and the Western Regional Health Directorate showed over 900 persons affected with 13 persons confirmed dead. A total of 75 persons were on admission with various degrees of injuries (mainly burns) including 6 critically injured									
Ghana	COVID-19	Grade 3	12-Mar-20	12-Mar-20	9-Feb-2022	158 220	158 220	1 433	0.9%
As of 9 February 2022, a total of 158 220 confirmed COVID-19 cases have been reported in Ghana. There have been 1 433 deaths and 156 429 recoveries reported.									
Ghana	Poliomyelitis (cVDPV2)	Grade 2	9-Jul-2019	8-Jul-2019	20-Feb-2022	31	31	0	0.0%
No cases have been reported in 2022 nor 2021, 12 cases were reported in 2020, and 19 were reported in 2019.									
Ghana	Yellow fever	Grade 2	3-Nov-21	15-Oct-21	15-Feb-2022	158	64	11	7.0%
From 15 October 2021, suspected cases of yellow fever were reported mostly among nomadic settlers in the Savannah Region, northwest Ghana (bordering Côte d'Ivoire). As of 15 February 2022, a total of 744 yellow fever suspected cases including 158 probable (IgM positive) and 64 confirmed cases were reported from 11 regions in Ghana.									
Guinea	COVID-19	Grade 3	13-Mar-20	13-Mar-20	16-Feb-2022	36 354	36 354	438	1.2%
The Ministry of Health in Guinea announced the first confirmed case of COVID-19 on 13 March 2020. As of 16 February 2022, a total of 36 354 cases including 32 354 recovered cases and 438 deaths have been reported in the country.									
Guinea	Measles	Ungraded	09-May-2018	1-Jan-21	1-Dec-2021	622	321	5	0.8%
In 2021, as of Epi week 49, 622 suspected cases have been reported, 601 samples taken, 601 samples tested of which 321 tested positive; 5 deaths have been reported. Out of the 321 positive persons, 64 (12%) were vaccinated. In 2020 at the same epi week, 6070 suspected cases, 870 cases sampled, 767 samples tested of which 524 positive, 269 negative and 48 undetermined; 15 deaths have been reported. Since 2020, a total of 6 623 suspected cases, 1 120 tests analysed, 1 141 confirmed cases, 19 deaths have been reported.									
Guinea	Poliomyelitis (cVDPV2)	Grade 2	22-Jul-2020	22-Jul-2020	16-Feb-2022	50	50	0	0.0%
No new cases of circulating vaccine-derived poliovirus type 2 (cVDPV2) were reported this week. So far, we have 6 cases reported in 2021. The total number of 2020 cases has been corrected to 44.									

Country	Event	Grade	Date notified to WCO	Start of reporting period	End of reporting period	Total cases	Cases Confirmed	Deaths	CFR
Guinea-Bissau	COVID-19	Grade 3	25-Mar-20	25-Mar-20	18-Feb-2022	7 907	7 907	166	2.1%
On 25 March 2020, the Ministry of Health of Guinea Bissau reported the first COVID-19 confirmed case in the country. As of 18 February 2022, the country has reported 7 907 confirmed cases of COVID-19 with 6 935 recoveries and 166 deaths.									
Guinea-Bissau	Poliomyelitis (cVDPV2)	Grade 2	9-Nov-21	9-Nov-21	20-Feb-2022	4	4	0	0.0%
No case of circulating vaccine-derived poliovirus type 2 (cVDPV2) was reported this week. Three cases were reported in 2021 which were linked to the Jigawa outbreak in Nigeria.									
Kenya	COVID-19	Grade 3	13-Mar-20	13-Mar-20	20-Feb-2022	322 696	322 696	5 635	1.7%
On 12 March 2020, the Ministry of Health announced the confirmation of one new COVID-19 case in the country. As of 20 February 2022, 322 696 confirmed COVID-19 cases including 5 635 deaths and 303 079 recoveries have been reported in the country.									
Kenya	Leishmaniasis	Ungraded	31-Mar-19	3-Jan-20	6-Feb-2022	1 537	1 356	10	0.7%
Since January 2020, a total of 1 537 visceral leishmaniasis suspected and confirmed cases with 10 deaths (CFR 0.7%), have been reported in eight counties namely: Marsabit, Garissa, Kitui, Baringo, West Pokot, Mandera, Wajir, and Tharaka Nithi. The outbreak is active in four counties, Kitui, West Pokot, Wajir and Tharaka Nithi. Fourteen (14) new cases were reported in week 48.									
Kenya	Poliomyelitis (cVDPV2)	Grade 2	5-Feb-2021	10-Feb-2021	20-Feb-2022	3	3	0	0.0%
No cVDPV2 positive environmental sample was reported this week. There was one cVDPV2 positive environmental sample reported in 2020 and one in 2021. The virus is linked to the Banadir outbreak in Somalia.									
Lesotho	COVID-19	Grade 3	13-May-2020	13-May-2020	13-Feb-2022	32 434	32 434	696	2.1%
Since the first confirmed COVID-19 case was reported in Lesotho on 13 May 2020, until 13 February 2022, a total of 32 434 cases of COVID-19 have been reported, including 23 116 recoveries and 696 deaths.									
Liberia	COVID-19	Grade 3	16-Mar-20	16-Mar-20	15-Feb-2022	7 360	7 360	290	3.9%
From 16 March 2020 to 15 February 2022, Liberia has recorded a total of 7 360 cases including 290 deaths and 7 051 recoveries have been reported.									
Liberia	Measles	Ungraded	3-Feb-2022	1-Jan-22	3-Feb-2022	92	20	2	2.2%
There is currently an ongoing measles outbreak in 2 counties: Montserrado County in Commonwealth district and Bong County in Zota district. Cumulatively, 92 suspected cases including 2 deaths (CFR 2.2%) have been recorded in the country. Of these, 20 laboratory-confirmed, 20 clinically compatible, 1 Epi-link, and 24 non-measles (negative), and 27 pending testing. Current interventions include active case search, isolation and management of cases, and mini vaccination campaign in Montserrado county.									
Liberia	Poliomyelitis (cVDPV2)	Grade 2	10-Dec-2020	17-Dec-2020	20-Feb-2022	3	3	0	0.0%
No case of circulating vaccine-derived poliovirus type 2 (cVDPV2) was reported this week. The country reported 3 cases in 2021.									
Madagascar	Floods	Grade 2	19-Jan-22	16-Jan-22	19-Feb-2022	288 185		190	0.1%
Heavy rains in Madagascar from multiple weather systems (Tropical Storm Ana, Cyclone Batsirai, and Tropical Storm Dumako) have flooded parts of the country. The Tropical Storm Ana weather system affected the country during week 3 of 2022, while Cyclone Batsirai occurred in week 5, and Tropical Storm Dumako occurred in week 7. As of 19 Feb 2022, there have been 131 555 victims affected including 55 deaths by the Tropical Storm Ana weather system in 12 regions. A total of 2 265 people are currently internally displaced and are housed currently in 3 accommodation sites. Damages from Cyclone Batsirai have been reported as of 16 Feb 2022 where 146 671 people have been affected causing 121 deaths mostly in the district of Ikongo of Fitovinany Region. As of 16 Feb 2022, 20 185 people have been displaced by the effects of Cyclone Batsirai and currently reside in 51 accommodation sites. Damages by Tropical Storm Dumako have only been counted provisionally and approximately 9 959 people have been affected including 14 deaths. A total of 4 323 people have been displaced to 12 accommodation sites. Yet another storm system, Cyclone Emnati, is expected to affect Madagascar during week 8.									
Madagascar	Malnutrition crisis	Grade 2	1-Jul-2021	1-Jan-21	24-Jan-22	-	-	-	-
A prolonged three-year drought in southern Madagascar has contributed to food insecurity issues for an estimated 1.3 million people in the Grand Sud area, of which 14K people were classified as IPC Phase 5 or catastrophically food insecure. The Integrated food security Phase Classification (IPC) analysis for January 2022 has classified 405 000 people in emergency (phase 4). About 309 000 children are projected to suffer from moderate acute malnutrition and 60 000 children aged of 6-59 months are projected to suffer from severe acute malnutrition.									
Madagascar	COVID-19	Grade 3	20-Mar-20	20-Mar-20	18-Feb-2022	63 433	63 433	1 350	2.1%
Madagascar Ministry of Health announced the confirmation of the first COVID-19 case on 20 March 2020. As of 18 February 2022, a total of 63 433 cases have been reported in the country, out of which 57 862 have recovered and 1 350 deaths reported.									
Madagascar	Poliomyelitis (cVDPV1)	Grade 2	28-Apr-2021	28-Apr-2021	16-Feb-2022	11	11	0	0.0%
No case of circulating vaccine-derived poliovirus type 1 (cVDPV1) was reported this week. There are 11 cases reported in 2021									
Malawi	Floods	Grade 2	26-Jan-22	26-Jan-22	9-Feb-2022	9 457 267		46	0.0%
On 26 January 2022 the State President declared a State of National Disaster following the Tropical Storm ANA, which caused heavy flooding in several districts in the country, especially in the Southern Region due to heavy rainfall and strong winds. 19 districts and 2 cities have been impacted with tropical storm Ana which hit Malawi from 23 January 2022. Reports indicate 945,7267 people (221,127 households) affected by the floods of which 152,786 (32,935 households) are displaced, 46 deaths, 18 missing and 206 injuries recorded according to the Government									
Malawi	COVID-19	Grade 3	2-Apr-2020	2-Apr-2020	20-Feb-2022	85 219	85 219	2 606	-
On 2 April 2020, the president of Malawi announced the first confirmed cases of COVID-19 in the country. As of 20 February 2022, the country has a total of 85 219 confirmed cases with 2 606 deaths and 74 685 recoveries.									

Country	Event	Grade	Date notified to WCO	Start of reporting period	End of reporting period	Total cases	Cases Confirmed	Deaths	CFR
Malawi	Poliomyelitis	Ungraded	31-Jan-22	1-Feb-2022	20-Feb-2022	1	1	0	0.0%
One positive case of wild WPV1 was detected in Lilongwe from a patient with the date of onset of paralysis on 19 November 2021 confirmed by the National Institute for Communicable Diseases (NICD) reference laboratory.									
Mali	Humanitarian crisis	Protracted 1	n/a	n/a	31-Dec-2021	-	-	-	-
The situation in northern and central regions of the country remains unstable, marked by an increase in direct or indirect attacks against national and international armed forces and the civilian population. Issues such as inter and intra-community conflicts, activism of non-state armed groups, consequences of counter-insurgency operations, crime and banditry continue to weaken the Malian context. As of 31 December 2021, there were 401 736 IDPs in the country and 49 977 refugees. However, 85 939 returnees have come back to the country. Due to the humanitarian crisis, 5% of health facilities are not fully functional with a limited presence of partners working in the management of primary health care in the northern and central regions.									
Mali	COVID-19	Grade 3	25-Mar-20	25-Mar-20	20-Feb-2022	30 340	30 340	720	2.4%
On 25 March 2020, the Ministry of Health of Mali reported the first COVID-19 confirmed cases in the country. As of 20 February 2022, a total of 30 340 confirmed COVID-19 cases have been reported in the country including 720 deaths and 28 543 recoveries.									
Mali	Measles	Ungraded	20-Feb-2018	1-Jan-21	2-Jan-22	1 947	828	2	0.1%
From January 2021 up to Epi week 51 (ending the 02 January 2022), Mali has reported a total of 1 947 suspected cases including two deaths, 1 516 samples tested of which 828 were positive, 644 negative and 44 undetermined. There is an increase of 93.01 % of confirmed cases compared to the same week last year.									
Mali	Poliomyelitis (cVDPV2)	Grade 2	18-Aug-2020	18-Aug-2020	16-Feb-2022	52	52	0	0.0%
No case of circulating vaccine-derived poliovirus type 2 (cVDPV2) was reported this week. No cases have been reported in 2021. The total number of cases since 2020 are 52.									
Mauritania	CCHF	Ungraded	8-Feb-2022	8-Feb-2022	19-Feb-2022	5	5	1	20.0%
On 4 February 2022, a case of Crimean-Congo haemorrhagic fever (CCHF) was confirmed by polymerase chain reaction (PCR) at the Institut National de Recherche en Santé Publique in Nouakchott, Mauritania. The patient is a 52-year-old male farmer living in the department (moughataa) of Koubeni in the region (wilaya) of Hodh Elgharbi. He presented with epistaxis and hematemesis for which he consulted five health facilities in Kubeni and Nouakchott between 27 January and 4 February 2022. As of 19 February 2022, a total of five confirmed cases including one deaths were reported.									
Mauritania	COVID-19	Grade 3	13-Mar-20	13-Mar-20	20-Feb-2022	58 611	58 611	976	-
The government of Mauritania announced its first confirmed COVID-19 case on 13 March 2020. As of 20 February 2022, a total of 58 611 cases including 976 deaths and 57 522 recovered cases have been reported in the country.									
Mauritius	COVID-19	Grade 3	18-Mar-20	18-Mar-20	15-Feb-2022	131 828	131 828	878	0.7%
The Republic of Mauritius announced the first three positive cases of COVID-19 on 18 March 2020. As of 15 February 2022, a total of 131 828 confirmed COVID-19 cases including 878 deaths and 114 970 recovered cases have been reported in the country.									
Mozambique	Floods	Ungraded	24-Jan-22	26-Jan-22	26-Jan-22	4 000		5	0.1%
The tropical storm Ana made landfall in Angoche district, Nampula province on 24 January. The storm subsequently headed westwards, significantly affecting Zambezia and Tete provinces. Five fatalities, 66 injured people, 660 damaged houses and 4 000 affected people across Nampula, Zambezia, Tete and Cabo Delgado Provinces are reported. A total of 546 private houses were also partially destroyed while 115 were totally destroyed. Moreover, one health center and 16 classrooms were affected. Mozambique, which is already struggling with multiple crises, is a low-income country and third in Africa for exposures to extreme climatic events, with a yearly tropical storm cycle that does not give affected people time to recover.									
Mozambique	Humanitarian crisis in Cabo Delgado	Protracted 2	1-Jan-20	1-Jan-20	31-Jan-22	-	-	-	-
The safety situation in Cabo Delgado remains unpredictable and volatile. As of 31 Jan 2022, the nationwide estimate of people in need of humanitarian assistance is 1.3 million and more than 820K people are displaced by conflict.									
Mozambique	COVID-19	Grade 3	22-Mar-20	22-Mar-20	20-Feb-2022	224 903	224 903	2 189	1.0%
The first COVID-19 confirmed case was reported in Mozambique on 22 March 2020. As of 20 February 2022, a total of 224 903 confirmed COVID-19 cases were reported in the country including 2 189 deaths and 218 922 recoveries.									
Mozambique	Measles	Ungraded	25-Jun-2020	1-Jan-21	10-Oct-21	125	2	0	0.0%
Since the beginning of 2021, measles outbreak is active in 11 provinces. As of 10 October 2021 (week 40), there were 125 cases reported including 2 confirmed cases and no death. During the same period in 2020, there were 185 confirmed cases and no death.									
Namibia	COVID-19	Grade 3	14-Mar-20	14-Mar-20	19-Feb-2022	157 010	157 010	4 002	0.0%
The first case of COVID-19 was detected in Namibia on the 14 March 2020. As of 19 February 2022, a total of 157 010 confirmed cases with 152 472 recovered and 4 002 deaths have been reported.									
Namibia	Hepatitis E	Protracted 1	18-Dec-2017	8-Sep-17	15-Aug-2021	8 090	8 090	66	0.8%
The current outbreak in Namibia started in December 2017. As of 15 August 2021, a cumulative total of 8 090 cases (2 117 laboratory-confirmed, 4 738 epidemiologically linked, and 1 235 suspected cases) including 66 deaths (CFR=0.8%) have been reported countrywide. Khomas Region remains the most affected region, accounting for 5 004 (62.0%) of reported cases, followed by Erongo 1 717 (21.2%).									
Niger	Humanitarian crisis	Protracted 1	1-Feb-2015	1-Feb-2015	24-Jan-22	-	-	-	-
According to OCHA statistics, 3.8 million people need humanitarian assistance in 2022. As of 31 Dec 2021, 264 257 people are internally displaced, 249 945 are refugees, and 2.3 million are food insecure (phase 3+ and above). Recent sanctions imposed by the Economic Community of West African States have severely impacted migration. Currently, 1 070 Malian migrants are stranded in Niger, unable to return home, awaiting authorization from Niger's Ministry of Foreign Affairs and Cooperation.									

Country	Event	Grade	Date notified to WCO	Start of reporting period	End of reporting period	Total cases	Cases Confirmed	Deaths	CFR
Niger	COVID-19	Grade 3	19-Mar-20	19-Mar-20	20-Feb-2022	8 738	8 738	303	3.5%
From 19 March 2020 to 20 February 2022, a total of 8 738 cases with 303 deaths have been reported across the country. A total of 8 406 recoveries have been reported from the country.									
Niger	Meningitis	Ungraded		1-Jan-21	16-Jan-22	1 688	-	76	4.5%
Since the beginning of the year 2021 to week 2 of 2022 ending 16 January 2022, 1 688 cases have been reported with 76 deaths (CFR 4.5%). The reports shared by the country shows that 2 health districts in Zinder region crossed the alert threshold: Dungass with an attack rate (AR) of 4.5 cases per 100 000 inhabitants and Magaria with an attack rate (AR) of 4.8 cases per 100,000 inhabitants. An analysis of data by sub-districts indicates that some health areas crossed the epidemic threshold on week 49 of 2021 (ending 12 December). <i>Neisseria meningitidis</i> serogroup C (NmC) is the predominant germ identified in the 2 health districts. An International Coordinating Group (ICG) for vaccine provision request is underway for a vaccine campaign response.									
Niger	Poliomyelitis (cVDPV2)	Grade 2	1-Jan-20	1-Jan-21	16-Feb-2022	15	15	0	0.0%
No case of circulating vaccine-derived poliovirus type 2 (cVDPV2) was reported this week. The number of 2021 cases remains at 15.									
Nigeria	Humanitarian crisis	Protracted 3	10-Oct-16	n/a	20-Jan-22	-	-	-	-
Attacks in Nigeria have continued in Local Government Agencies of Borno, Adama, and Yobe (BAY) states making the North-Eastern part of the country volatile. As of 31 December 2021, there were 77 143 refugees from other countries within Nigeria with almost 73 000 (or 95%) coming from Cameroon. More than 2.2 million IDPs (72.5% of all IDPs in the country) are in the North-East, while the rest (27.5%) are in the North-West/North-Central part of the country. On 20 January 2022, Non-State Armed Groups killed two civilians in the south of Borno state and abducted four women during the raid. This caused the displacement of hundreds residents. The groups also set houses and churches on fire and looted food supplies from homes and shops.									
Nigeria	Cholera	Grade 2	12-Jan-21	12-Jan-21	30-Jan-22	470		9	1.9%
From epidemiological week 1 to week 4, 2022, a total of 470 suspected cases including 9 deaths (CFR 1.9%) have been reported from 10 states and FCT. Of the suspected cases, the less than 5 years age group is the most affected, while males and females are equally affected.									
Nigeria	COVID-19	Grade 3	27-Feb-2020	27-Feb-2020	19-Feb-2022	254 243	254 243	3 142	1.2%
The first case of COVID-19 was first detected in Nigeria on the 27 February 2020. As of 19 February 2022, a total of 254 243 confirmed cases with 230 587 recovered and 3 142 deaths have been reported.									
Nigeria	Lassa fever	Grade 1	1-Jan-21	1-Jan-21	23-Jan-22	759	170	32	18.8%
Lassa fever is an endemic disease in Nigeria which is reportable through IHR. In week 3 of 2022, the number of new confirmed cases was 74. These were reported from Ondo, Bauchi, Edo, Oyo, Ebonyi, Benue, Katsina, Kaduna and Taraba States. Cumulatively from week 1 to week 3 of 2022, a total of 170 confirmed cases including 32 deaths among confirmed cases have been reported with a case fatality rate of 18.8 % across 12 states. In total, 759 cases are suspected in 2022. This is higher than the same period reported in 2021. Of all confirmed cases, 74% are from Edo (28%), Ondo (28%) and Bauchi (23%) States.									
Nigeria	Monkeypox	Ungraded	9-Sep-21	1-Jan-21	31-Jan-22	106	37	0	0.0%
According to the Nigeria Centre for Disease Control (NCDC), in Jan 2022, seven cases of suspected monkeypox were reported from four states: Adamawa (4), FCT (1), Imo (1), and Edo (1). Three of these cases were confirmed and no deaths have been reported. In 2021, a total of 98 suspected cases were reported throughout the year. Of the suspected cases, 34 were confirmed from nine states Delta (9), Lagos (6), Bayelsa (6), Rivers (6), Edo (3), Federal Capital Territory (1), Niger (1), Ogun (1), Cross River (1) and no deaths recorded.									
Nigeria	Poliomyelitis (cVDPV2)	Grade 2	1-Jun-2018	1-Jan-18	20-Feb-2022	476	409	0	0.0%
No cases were reported this week. So far only 1 cVDPV2 case and 6 environmental samples have been reported in 2022. There were 413 cVDPV2 cases and 18 environmental samples reported in 2021.									
Nigeria	Yellow fever	Grade 2	12-Sep-17	1-Jan-21	30-Dec-2021	42	42	2	4.8%
From 1 January 2021 to 31 December 2021, a total of 2 053 yellow fever (YF) suspected cases were reported from 37 states including in 497 Local Government Areas (LGA) in Nigeria. Of suspected cases, 42 tested positive for YF by plaque reduction neutralization test at Institut Pasteur in Dakar. Some PRNT-positive cases had a history of YF vaccination.									
Rwanda	COVID-19	Grade 3	14-Mar-20	14-Mar-20	20-Feb-2022	129 372	129 372	1 456	1.1%
The Rwanda Ministry of Health announced the confirmation of the first COVID-19 case on 14 March 2020. As of 20 February 2022, a total of 129 372 cases with 1 456 deaths and 127 684 recovered cases have been reported in the country.									
Sahel region	Humanitarian crisis	Grade 2	11-Feb-2022	-	11-Feb-2022	-	-	-	
The humanitarian situation has further deteriorated in six countries of the Sahel: Burkina Faso, Cameroon, Chad, Mali, Niger, and Nigeria. Problems such as violence, poverty, climate change, food insecurity, disease outbreaks, and military coups have persisted in the area for over a decade, however, incidents have been on the rise in recent months. The humanitarian situation causes additional challenges for the health of the population who are faced with weakened health systems among a context of food insecurity due to climate change.									
Sao Tome and Principe	Floods	Ungraded	30-Dec-2021	30-Dec-2021	20-Jan-22	-	-	2	
On 28 and 29 December 2021, after heavy rainfall on the island of São Tomé, the rivers flooded and caused floods and landslides, affecting mainly the districts of Águia Grande (capital city with 40% of the country's population) and Lemba (8% of the population). Broken bridges and landslides have left inaccessible districts of Lemba, Cantagalo and Mezochi. Dwellings have been destroyed and washed away by floods. Such heavy rainfall has not been recorded for 30 years. Several communities are without access to drinking water due to the destruction of water pipes. So far, 2 deaths are reported and several missing persons. Current responses in the country are focused on the capital city and the areas most in need are found in the Lemba and Me-Zochi districts, with about 9 000 people affected out of 15 000 according to the population data.									

Country	Event	Grade	Date notified to WCO	Start of reporting period	End of reporting period	Total cases	Cases Confirmed	Deaths	CFR
Sao Tome and Principe	COVID-19	Grade 3	6-Apr-2020	6-Apr-2020	20-Feb-2022	5 926	5 926	71	1.2%
On 6 April 2020, the Ministry of Health of Sao Tome and Principe reported the country's first case of COVID-19. As of 20 February 2022, a total of 5 926 confirmed cases of COVID-19 have been reported, including 71 deaths. A total of 5 845 cases have been reported as recoveries.									
Senegal	COVID-19	Grade 3	2-Mar-20	2-Mar-20	20-Feb-2022	85 564	85 564	1 958	2.3%
From 2 March 2020 to 20 February 2022, a total of 85 564 confirmed cases of COVID-19 including 1 958 deaths and 83 478 recoveries have been reported in Senegal.									
Senegal	Poliomyelitis (cVDPV2)	Grade 2		4-Apr-2021	16-Feb-2022	17	17	0	0.0%
No case of circulating vaccine-derived poliovirus type 2 (cVDPV2) was reported this week. There are 17 cases reported in 2021.									
Seychelles	COVID-19	Grade 3	14-Mar-20	14-Mar-20	20-Feb-2022	39 128	39 128	151	0.4%
Since the first COVID-19 confirmed cases were reported in Seychelles 14 March 2020, as of 20 February 2022 a total of 39 128 cases have been confirmed, including 38 379 recoveries and 151 deaths have been reported.									
Sierra Leone	Mass fire incident	Ungraded	5-Nov-21	6-Nov-21	18-Jan-22	304	304	154	50.7%
On 5 November 2021, there was a mass fire accident involving a fuel tank that ruptured its tanks after a collision with another vehicle. The fuel ignited and caused a mass burn affecting a number of persons with various degrees of burns including instant deaths. As of 18 January 2022, a total of 304 victims have been reported with 154 deaths and 3 are currently in admission. So far 87 patients have been discharged and are being treated as outpatients for burns.									
Sierra Leone	COVID-19	Grade 3	31-Mar-20	27-Mar-20	19-Feb-2022	7 663	7 663	125	1.6%
On 31 March 2020, the President of Sierra Leone reported the first confirmed COVID-19 case in the country. As of 19 February 2022, a total 7 663 confirmed COVID-19 cases were reported in the country including 125 deaths and 4 804 recovered cases.									
Sierra Leone	Lassa fever	Ungraded	12-Feb-2021	1-Jan-21	9-Jan-22	17	15	9	52.9%
As of 9 January 2022, 17 cases of Lassa fever have been reported from Kenema (14) and Kailahun (3) districts since the beginning of 2021. Of these 9 of the cases have died yielding CFR of 52.9%. Lassa fever is known to be endemic in Sierra Leone and surrounding countries. From 2016-2020 Sierra Leone experienced gradually declining trends in annual Lassa fever case totals, however, in 2021, cases doubled compared to 2020 (from 8 total reported in 2020 to 16 total in 2021). During 2021, females (69%) and the 1-4 years (38%) age group were predominately affected.									
Sierra Leone	Measles	Ungraded	1-Nov-21	1-Jan-22	17-Feb-2022	72		0	0.0%
In 2022, another measles outbreak was declared on 8 February 2022 in the Kambia district. The current outbreak started on 20 January 2022 with 7 new cases. The outbreak attained its highest peak on 4 February 2022 with 10 cases while more cases occurred in January as well. The transmission is still in progress. A cumulative number of 72 cases have been recorded. All these cases have been investigated, line listed, and treatment given for accordingly.									
Sierra Leone	Poliomyelitis (cVDPV2)	Grade 2	10-Dec-2020	10-Dec-2020	20-Feb-2022	15	15		0.0%
No new cases of circulating vaccine-derived poliovirus type 2 (cVDPV2) reported this week. Five cases were reported in 2021, and 10 were reported in 2020.									
South Africa	COVID-19	Grade 3	5-Mar-20	3-Mar-20	20-Feb-2022	3 658 547	3 658 547	98 667	3.4%
Since the start of the COVID-19 pandemic in South Africa through 20 February 2022, a cumulative total of 3 658 547 confirmed cases and 98 667 deaths have been reported with 3 522 732 recoveries.									
South Sudan	Acute Food Insecurity	Grade 2	18-Dec-2020	5-Apr-2021	30-Nov-21	-	-	-	-
According to the World Food Programme an estimated 7.2 million people (60% of country's total population) faced crisis levels of food insecurity phase (IPC) 3 or worse from April to July 2021 - a figure that increased by 25% compared to the previous three months. Of the total number, 108 000 are in IPC 5, 2.4 are in IPC 4, and 4.6 million are in IPC 3. The total number includes 1.9 million acutely malnourished women and children suffering and 1.71 million internally displaced people. The six most affected counties are Pibor, Akobo, Aweil South, Tonj North, Tonj South and Tonj East. In 2021, the World Food Programme has reached some 498 887 flood-affected people with food and nutrition assistance.									
South Sudan	Floods	Grade 2	15-Jul-2021	1-May-2021	25-Jan-22	-	-	-	-
The escalating flooding began in May 2021 and has affected over 835K people in 33 counties as of 31 December 2021. Flooding has affected over 30 counties across 8 states. A rapidly worsening situation was noted in October 2021. In Unity State, there are over 200 000 people affected by floods. Water levels are now stabilizing, no rains for the past few weeks and partners are providing humanitarian services. Dykes are being repaired and reinforced to prevent further damage and displacement. About 70 health facilities were either cut-off, submerged, or damaged by the severe flooding. In Unity State, 27 health facilities have been relocated to higher grounds due to rising water levels.									
South Sudan	Humanitarian crisis	Protracted 3	15-Aug-2016	n/a	25-Jan-22	-	-	-	-
The long-standing and complex humanitarian crisis in South Sudan continues. In 2022, there is a total of 8.3 million people in need of humanitarian assistance, 2 million people internally displaced and 189 000 people living in protection of civilian sites across the country. Flooding, violence and COVID-19 are the major drivers of humanitarian needs. Renewed sub-national violence in several locations has led to displacement and disruption of health service provision.									
South Sudan	COVID-19	Grade 3	5-Apr-2020	5-Apr-2020	20-Feb-2022	16 936	16 936	137	0.8%
On 5 April 2020, the Ministry of Health of South Sudan reported the country's first case of COVID-19. As of 20 February 2022, a total of 16 936 confirmed COVID-19 cases were reported in the country including 137 deaths and 13 250 recovered cases.									
South Sudan	Hepatitis E	Ungraded	3-Jan-18	1-Jan-19	23-Jan-22	1 812	104	11	0.6%
The current outbreak in the Bentiu IDP camp is ongoing. As of 23 Jan 2022, a total of 1 812 cases of hepatitis E including 11 deaths (CFR: 0.6%) have been reported since Jan 2019. Hepatitis E cases have been above the epidemic threshold since week 19 of 2021. There were 50 new HEV cases in week 3, 2022.									

Country	Event	Grade	Date notified to WCO	Start of reporting period	End of reporting period	Total cases	Cases Confirmed	Deaths	CFR
South Sudan	Malaria	Ungraded	28-Dec-2021	1-Jan-21	19-Dec-2021	3 707 252		2 963	0.1%
Between epidemiological weeks 1 and 51 of 2021 (ending 19 December), 3 707 252 malaria cases including 2 963 deaths were reported. Epidemic thresholds have been exceeded in several districts in the states with an upsurge occurring in Rubkona, Duk, Twic East and Raga counties in week 3 of 2022.									
South Sudan	Poliomyelitis (cVDPV2)	Grade 2	22-Oct-20	22-Oct-20	6-Feb-2022	59	59	0	0.0%
No case of circulating vaccine-derived poliovirus type 2 (cVDPV2) were reported this week. There are 59 cVDPV2 cases in the country; 9 in 2021 and 50 in 2020.									
Tanzania, United Republic of	Cholera	Ungraded	13-Dec-2021	13-Dec-2021	19-Jan-22	30	-	4	13.3%
As of 31 January 2022, at least 30 cases of cholera have been reported in Tanzania's southern highlands regions of Rukwa and Kigoma. The first three cases of cholera were reported at Korongwe ward dispensary in early December 2021.									
Tanzania, United Republic of	COVID-19	Grade 3	16-Mar-20	16-Mar-20	4-Feb-2022	33 436	33 436	792	2.4%
The Ministry of Health, Community Health, Community Development, Gender, Elderly and Children in Tanzania reported the country's first case of COVID-19 on 16 March 2020. As of 4 February 2022, a total of 33 436 cases have been reported in Tanzania Mainland including 792 deaths.									
Togo	COVID-19	Grade 3	6-Mar-20	1-Mar-20	20-Feb-2022	36 738	36 738	271	0.7%
On 6 March 2020, the Ministry of Health and Public Hygiene of Togo announced the confirmation of its first case of COVID-19. As of 20 February 2022, a total of 36 738 cases including 271 deaths and 36 397 recovered cases have been reported in the country.									
Togo	Measles	Ungraded	2-Feb-2022	25-Nov-21	11-Feb-2022	334	73	0	0.0%
A measles outbreak has been declared by the Togolese health authorities on 9 February 2022 after confirmation at National Referral Laboratory for Epidemic prone Diseases. As of 11 February 2022, six districts are experiencing the measles outbreak including Zio, Agoe, Golfe, Kpélé, Tchaoudjo and Bassar with a cumulative number of 334 suspected cases, 73 confirmed and 0 death (CFR 0.0%). Zio district has reported more cases 213 out of 334 (63.7%) with 25 confirmed. The outbreak stated in November 2021 in the Zio district. Among the 73 confirmed cases reported, 29 (39.7%) are unvaccinated, 35 cases (47.9%) have unknown vaccination status, 8 cases are vaccinated with only 5 cases that received 2 doses of measles vaccine.									
Togo	Poliomyelitis (cVDPV2)	Grade 2	18-Oct-19	13-Sep-19	16-Feb-2022	17	17	0	0.0%
No new case of cVDPV2 was reported during the past week. No cases have been reported in 2021. There were nine cases in 2020 while the total number of cVDPV2 cases reported in 2019 remains eight.									
Uganda	Floods	Ungraded	24-Jan-22	31-Jan-22	31-Jan-22	7 049	-	9	0.1%
On 24 January 2022, following heavy rains that triggered mudslides that affected Nyarusiza and Muramba sub-counties in Kisoro district, Uganda. 9 deaths were reported. Crops, livestock, shelter, water sources, shops, roads and schools are damaged. Two primary schools were affected and learning of at least 900 pupils have been interrupted. One health center with a catchment population of about 30 000 was affected and interrupted services. More than 4 000 children and other vulnerable groups were affected. No adequate shelter and wash facilities for the affected community posing a risk disease outbreaks.									
Uganda	COVID-19	Grade 3	21-Mar-20	21-Mar-20	19-Feb-2022	163 116	163 116	3 585	2.2%
The first COVID-19 confirmed case was reported in Uganda on 21 March 2020. As of 19 February 2022, a total of 163 116 confirmed COVID-19 cases, 99 797 recoveries with 3 585 deaths.									
Uganda	Rift Valley fever	Ungraded	14-Jan-22	12-Jan-22	7-Feb-2022	2	2	1	50.0%
On 12 January 2022, the Ugandan Ministry of Health was notified of a confirmed case of Rift Valley fever (RVF). The patient was a 35-year-old male, resident of Kiruhura village, Mabare subcounty, Kagadi district. The date of onset was 2 January 2022 and he presented with fever, general body weakness and unexplained bleeding in vomitus, stool and cough. He was admitted successively in 2 hospitals and died on 10 January 2022. As of 7 February 2022, a total of two confirmed cases of RVF have been recorded.									
Zambia	COVID-19	Grade 3	18-Mar-20	18-Mar-20	20-Feb-2022	311 194	311 194	3 943	1.3%
The first COVID-19 confirmed case was reported in Zambia on 18 March 2020. As of 20 February 2022, a total of 311 194 confirmed COVID-19 cases were reported in the country including 3 943 deaths and 305 194 recovered cases.									
Zimbabwe	Anthrax	Ungraded	6-May-2019	1-Jan-22	22-Jan-22	22	0	0	0.0%
The anthrax outbreak is ongoing in Zimbabwe. Six new cases were reported in Week 3 of 2022 with the cumulative for the year being 22. The cases were reported by Gokwe North District and Gokwe South District in Midlands Province. This outbreak started in Week 36 of 2019, affecting mainly Buhera and Gokwe North and South districts but a surge in cases started appearing in week 38 when cases were reported in some other areas. The cumulative figures for anthrax are 747 cases and 3 deaths in 2020 and 306 cases and 0 deaths in 2021.									
Zimbabwe	Cholera	Ungraded	27-Jan-22	27-Jan-22	27-Jan-22	1	1	0	0.0%
A case of cholera was detected on 19 January 2022 in Chiredzi District in Masvingo Province. The case is a 51-year-old male patient who began to show signs and symptoms of cholera on 19 January 2022. Rapid laboratory test of stool done on 20 January was positive for cholera. A subsequent stool sample collected for culture done on the same day was positive for cholera. An additional sample analyzed at the National Microbiology Reference Laboratory (NMRL) in Harare confirmed cholera. Zimbabwe has gone without reporting any cholera case for almost 3 years as the last case reported was in March 2019. Chiredzi district is known to be one of the cholera hotspots for Zimbabwe.									
Zimbabwe	COVID-19	Grade 3	20-Mar-20	20-Mar-20	20-Feb-2022	233 352	233 352	5 386	2.3%
The first COVID-19 confirmed case was reported in Zimbabwe on 20 March 2020. As of 20 February 2022, a total of 233 352 confirmed COVID-19 cases were reported in the country including 5 386 deaths and 224 940 cases that recovered.									

†Grading is an internal WHO process, based on the Emergency Response Framework. For further information, please see the Emergency Response Framework: <http://www.who.int/hac/about/erf/en/>.

Data are taken from the most recently available situation reports sent to WHO AFRO. Numbers are subject to change as the situations are dynamic.

This is not an official publication of the World Health Organization.

Correspondence on this publication may be directed to:

Dr Mary Stephen

Programme Area Manager, Health Information & Risk Assessment. ai

WHO Emergency Preparedness and Response

WHO Regional Office for Africa

P O Box. 06 Cité du Djoué, Brazzaville, Congo

Email: afrooutbreak@who.int

Requests for permission to reproduce or translate this publication – whether for sale or for non-commercial distribution – should be sent to the same address.

The designations employed and the presentation of the material in this publication do not imply the expression of any opinion whatsoever on the part of the World Health Organization concerning the legal status of any country, territory, city or area or of its authorities, or concerning the delimitation of its frontiers or boundaries. Dotted lines on maps represent approximate borderlines for which there may not yet be full agreement.

All reasonable precautions have been taken by the World Health Organization to verify the information contained in this publication. However, the published material is being distributed without warranty of any kind, either express or implied. The responsibility for the interpretation and use of the material lies with the reader. In no event shall the World Health Organization or its Regional Office for Africa be liable for damages arising from its use.

Contributors

Seydou DIA (Mauritania)
Charlotte NDIAYE (Mauritania)
Fatoumata Binta DIALLO (Togo)
Selome Julie Emma AZANMAN (Togo)

A. Moussongo

Editorial Team

M. Stephen
C. Okot
V. Mize
G. Williams
J. Kimenyi
O. Ogundiran
T. Lee
F. Kambale
R. Mangosa Zaza
J. Nguna

Production Team

A. Bukhari
T. Mlanda
R. Ngom
F. Moussana

Editorial Advisory Group

Dr. Salam Gueye, *Regional Emergency Director*
M. Stephen
A. Talisuna
A. Fortin

Data sources

Data and information is provided by Member States through WHO Country Offices via regular situation reports, teleconferences and email exchanges. Situations are evolving and dynamic therefore numbers stated are subject to change.