

Overall strategy

The World Health Organization (WHO) Regional Office for the Western Pacific (the Regional Office) encourages Member States to continue to suppress transmission of COVID-19 in order to avoid exceeding health system capacities and to protect vulnerable populations. A risk-based approach using the following tools is recommended: COVID-19 vaccination, calibrated public health and social measures, strengthened health system capacity, early detection and targeted response, and international border measures.

Key highlights

- New cases of COVID-19 were reported in 20 countries or areas in the Western Pacific Region within the past seven days: Cambodia 33, China 153 286, Fiji 20, Guam 128, Japan 616 351, the Republic of Korea 363 852, Lao People's Democratic Republic (PDR) 105, Malaysia 18 854, Marshall Islands 115, Micronesia (Federated States of) 2, Mongolia 2691, Nauru 3, New Caledonia 440, Niue 11, the Philippines 7605, Samoa 3, Singapore 13 222, Solomon Islands 2691, Tuvalu 441, and Viet Nam 2930.
- One Western Pacific countries or areas that had previously reported cases have reported no new cases within the past seven days: Pitcairn Islands (125 days). One Pacific Island country or area has not reported a case to date: Tokelau. American Samoa, Australia, Brunei Darussalam, Cook Islands, French Polynesia, Kiribati, New Zealand, Northern Mariana Islands, Palau, Papua New Guinea, Tonga, Vanuatu, and Wallis and Futuna did not update the number of cases due to reporting issues.

Epi update

COVID-19	Member States	Cases	Deaths
	20	1 182 783	1 742
	countries or areas reporting cases in the past 7 days	past 7 days	past 7 days
	15	97 248 013	281 105
	countries or areas reporting ZERO cases for more than 7 days	cumulative cases	cumulative deaths

Deployments

COVID-19 response	560	500	19	11	31
	total deployments	deployments completed	actively supporting country offices	actively supporting the Regional Office	currently supporting remotely

Supplies and logistics for health care workers shipped to 38 destinations in the Western Pacific Region (as of 9 November 2022)



23 626 474
surgical masks



4 755 804
particulate respirators



1 423 099
medical gowns



331 452
goggles



1 227 464
face shields



6 617 960
pairs of gloves



23 994
alcohol-based hand rub (100mL)



687 952
laboratory tests



1 845 254
point of care tests



3 601 510
swab kits



601
ICU ventilators



2 938
oxygen concentrators



28 835
pulse oximeters



213 240
rapid antigen tests

Weekly situation updates

- In the Region, 34 countries and areas have reported COVID-19 cases since December 2019. From 16 to 22 November 2022, a total of 1 182 783 cases with 1 742 deaths were reported, for a cumulative 97 248 013 cases with 281 105 deaths (proportion of fatal cases (PFC) 0.3%) as of 23 November 2022, 10:00 (GMT+8). Available data indicate that countries and areas in the Region have identified imported cases and/or localized community transmission, while subnational areas in some countries and areas have identified large-scale community transmission. Figure 1 shows the geographical distribution of cases reported in the last seven days.
- Globally, 634 522 052 COVID-19 cases with 6 599 100 deaths have been reported in 233 countries or areas (PFC 1.0%) as of 21 November 2022 10:00 (CEST). The number of newly reported weekly cases decreased or remained stable in other regions except for the South-East Asia Region. For the number of newly reported weekly deaths, it decreased in other regions except for the African Region and the South-East Asia Region.

Figure 1. Countries or areas with reported confirmed cases of COVID-19 from 16 to 22 November 2022, as of 23 November 2022 10:00 (GMT+8)

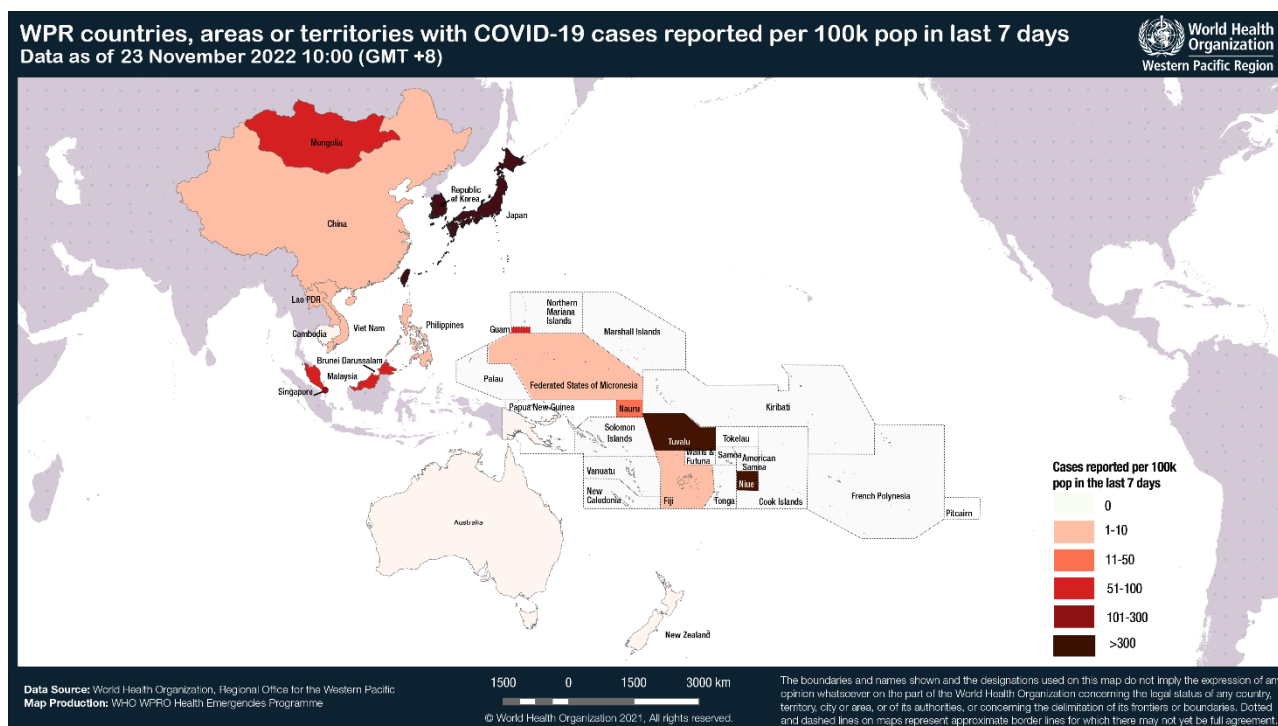


Figure 2. Epidemic curve of confirmed COVID-19 cases in countries or areas with the highest number of cases, as of 23 November 2022 10:00 (GMT+8)

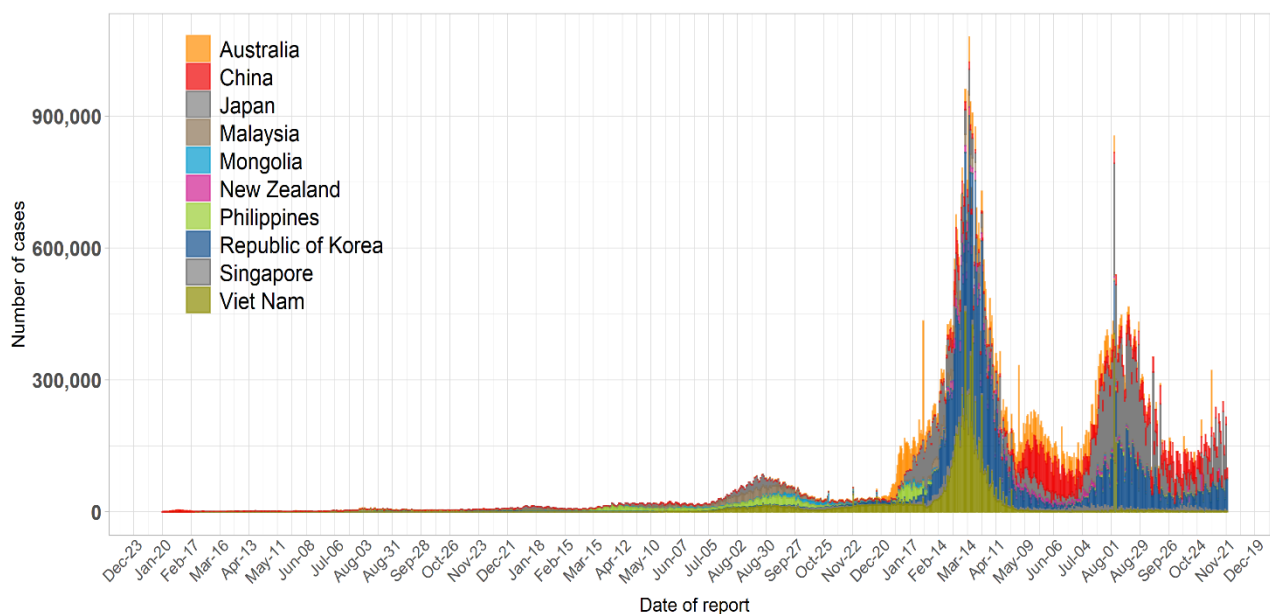


Figure 3. Epidemic curve of confirmed COVID-19 cases in countries or areas with the lowest number of cases, as of 23 November 2022 10:00 (GMT+8)

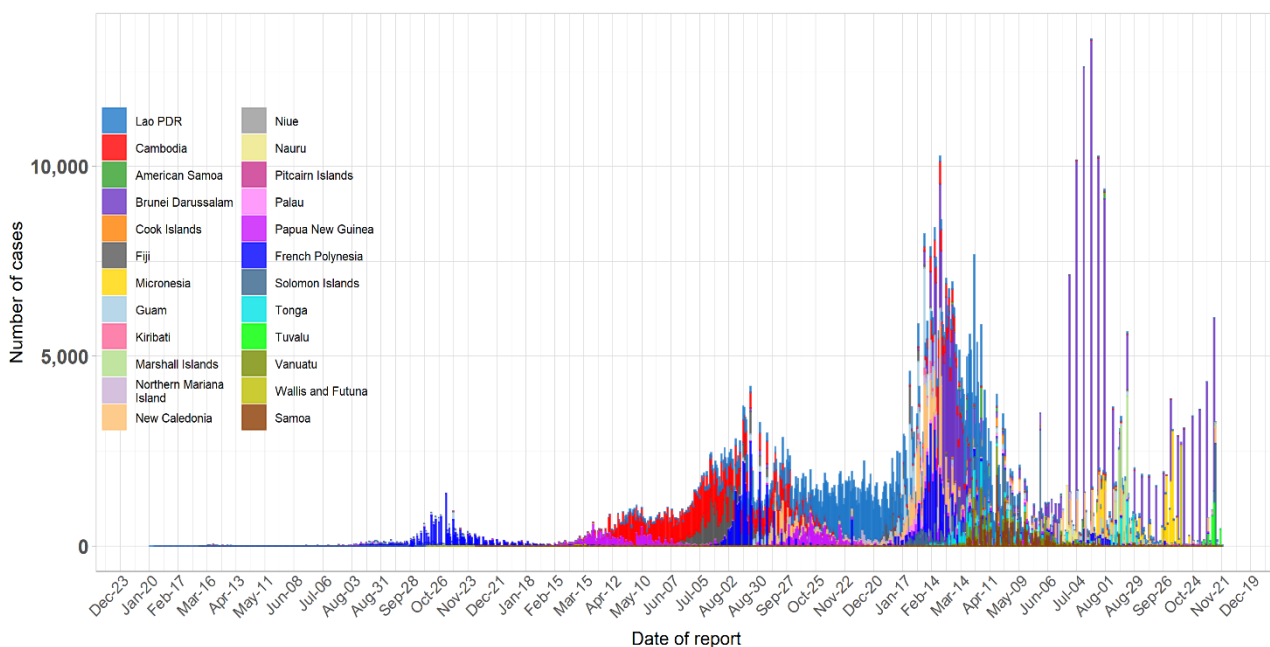


Table 1. Countries or areas with reported laboratory-confirmed COVID-19 cases and deaths, covering the period from 16 to 22 November 2022, as of 23 November 2022 (GMT+8)

Country or area	New cases (cumulative)	New deaths (cumulative)	Change (7-day average of cases)	Days since last reported case
American Samoa	0 ¹ (8 262)	0 (34)	0.00	0
Australia	0 ¹ (10 532 366)	0 (15 146)	-10 814.71	0
Brunei Darussalam	0 ¹ (253 406)	0 (137)	-649.29	0
Cambodia	33 (138 032)	0 (3 056)	4.29	0
China	153 286 (9 500 046)	468 (29838)	-2 192.29	0
Cook Islands	0 ¹ (6 389)	0 (1)	0.00	0
Fiji	20 (68 307)	0 (878)	0.43	0
French Polynesia	0 ¹ (76 827)	0 (649)	-4.29	0
Guam	128 (49 363)	1 (407)	9.57	0
Japan	616 351 (23 935 445)	767 (48 482)	12501.00	0
Kiribati	0 ¹ (3 430)	0 (13)	0.00	0
Korea, Republic of	363 852 (26 654 729)	363 (30 111)	-1120.29	0
Lao PDR	105 (216 468)	0 (757)	4.00	0
Malaysia	18 854 (4 969 420)	55 (36 609)	-248.57	0
Marshall Islands	115 (15 501)	0 (17)	16.43	0
Micronesia (Federated States of)	2 (22 034)	0 (55)	0.29	0
Mongolia	2 691 (990 994)	2 (2 134)	141.00	0
Nauru	3 (4 621)	0 (1)	-0.71	0
New Caledonia	440 (75 258)	0 (314)	10.29	0
New Zealand	0 ¹ (1 894 158)	0 (2 182)	-3 126.43	0
Niue	11 (102)	0 (0)	0.71	0
Northern Mariana Islands	0 ¹ (13 171)	0 (40)	0.00	0
Palau	0 ¹ (5684)	0 (7)	-22.00	0
Papua New Guinea	0 ¹ (45 819)	0 (668)	-22.43	0
The Philippines	7 605 (4 026 774)	80 (64 485)	-90.43	0
Pitcairn Islands	0 (4)	0 (0)	0.00	125
Samoa	3 (15 967)	0 (29)	-1.71	0
Singapore	13 222 (2 154 633)	3 (1 700)	-455.00	0
Solomon Islands	2 691 (24 575)	0 (153)	338.57	0
Tokelau	0 (0)	0 (0)	0.00	0
Tonga	0 ¹ (16 182)	0 (12)	0.00	0
Tuvalu	441 (2 828)	0 (0)	-254.71	0
Vanuatu	0 ¹ (11 981)	0 (14)	0.00	0
Viet Nam	2 930 (11 511 822)	3 (43 169)	36.00	0
Wallis and Futuna	0 ¹ (3415)	0 (7)	0.00	0
Total	1 182 783 (97 248 013)	1 742 (28 1105)	-5 940.29	

Note: Data continues to be collected and may change according to Member States' daily reports.

¹ The number of cases was not updated due to reporting issues

Table 2. Countries or areas in the Western Pacific Region that have reported currently circulating variants of concern, as of 23 November 2022 10:00 (GMT+8)

Country or area	Omicron Sub-lineage ²						
	BA.5*	BA.2.75*	BJ.1	BA.4.6*	XBB*	BA.2.3.20	BQ.1*
American Samoa	X			X			
Australia	X	X	X	X	X	X	X
Brunei Darussalam	X	X		X	X	X	X
Cambodia	X	X		X	X		
China	X	X					
Cook Islands							
Fiji							
French Polynesia							
Guam	X					X	
Japan	X	X		X	X	X	X
Kiribati	X						
Lao PDR	X						
Malaysia	X	X		X	X	X	X
Micronesia (Federated States of)	X						
Mongolia	X						X
New Caledonia							
New Zealand	X	X		X	X	X	X
Northern Mariana Islands	X						
Palau	X						
Papua New Guinea	X						
The Philippines	X	X		X	X	X	
Republic of Korea	X	X	X	X	X	X	X
Samoa	X						
Singapore	X	X	X	X	X	X	X
Solomon Islands	X						
Tonga	X						
Vanuatu	X						
Viet Nam	X	X		X			

*Includes sub variants

Note: GISAID submission data is subject to change.

² Based on sequences uploaded to [Global Initiative on Sharing Avian Influenza Data \(GISAID\)](https://gisaid.org/)

Key information and announcements

Information and planning

- The Regional Office continues to monitor COVID-19 incidence and transmission levels within countries and areas across the Region. Updated information is available on the [dashboard for the Western Pacific Region](#).

Partner Coordination

- Last week, the Global Outbreak Alert and Response Network (GOARN) held an Orientation to International Outbreak Response training, in collaboration with the National Centre for Global Medicine (NCGM) in Japan. This training helps build the capacity of public health field responders and prepares them to deliver life-saving interventions during outbreaks. Additionally, GOARN and NCGM conducted a 'GOARN Focal Point Engagement Meeting' that aimed to promote GOARN deployments, improve partner engagement and strengthen the network of GOARN partner institutions in Japan.
- WHO and partners are supporting a deployment of the Fiji Emergency Medical Assistance Team (FEMAT) to Tuvalu. Over the course of the next six weeks, an 8-person Specialized Care Team will provide clinical management support in response to a recent COVID-19 outbreak. This is FEMAT's first international deployment since receiving the Emergency Medical Team (EMT) classification in 2019.
- The Samoa Emergency Medical Assistance Team (SEMAT) has been formally launched following an inaugural EMT training held from 14 to 18 November 2022. More than thirty representatives from Samoa's Ministry of Health, Police, and Fire & Emergency Services Authority participated in the training, which was led by WHO and supported by Australia and New Zealand. It also included two members from Australia's EMT. SEMAT is now prepared to independently deploy and respond to future health emergencies.

Strategic Communication

- A poster about a COVID-19 booster is finalized and published on WPRO webpage and social media channels and shared with country offices. See link [here](#).

Messages for the public

- On social media, published content on COVID-19 response updates in countries and COVID-19 vaccine booster dose including a new material on people's need for one.
- Top COVID-19 Facebook posts:
 - [COVID-19 response in Pacific Island countries and areas](#)
 - [COVID-19 response support to Lao PDR from USAID and WHO](#)
 - [Do you need a COVID-19 booster?](#)

- Top COVID-19 Twitter posts:
 - [Encourage your family and friends to get their COVID-19 booster dose](#)
 - [COVID-19 response in Pacific Island countries and areas](#)
 - [COVID-19 response support to Lao PDR from USAID and WHO](#)
- The [COVID-19 risk perception](#) campaign in Cambodia, the Republic of Korea, Lao PDR, Mongolia and New Zealand has ended, reaching over 8 million people on Facebook in these countries, with over 7.6 million post engagements, mostly from videos.