

# WEEKLY BULLETIN ON OUTBREAKS AND OTHER EMERGENCIES

Week 48: 22 – 28 November 2021

Data as reported by: 17:00; 28 November 2021



World Health  
Organization

REGIONAL OFFICE FOR **Africa**  
WHO Health Emergencies Programme

**2**

New events

**141**

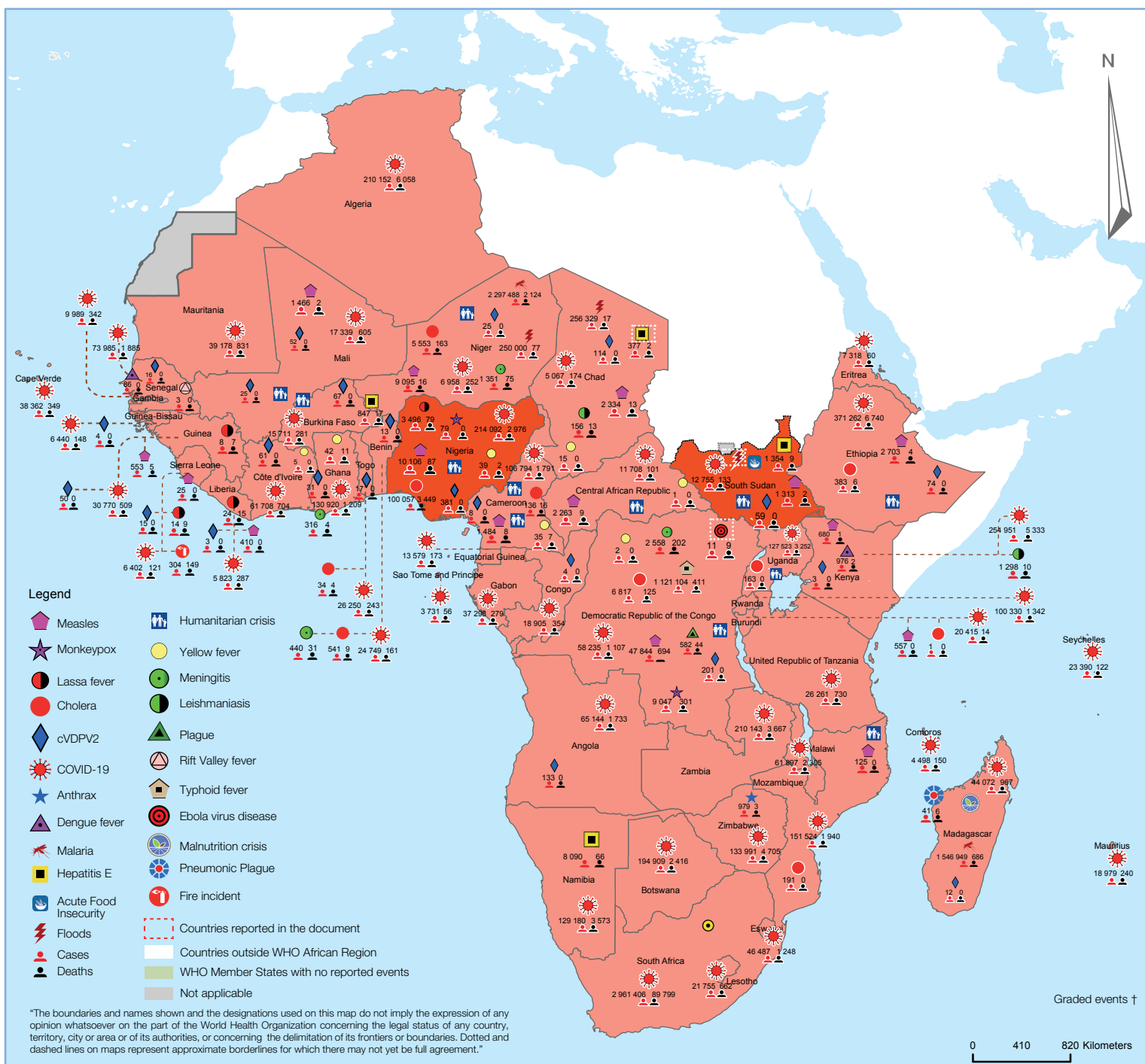
Ongoing events

**126**

Outbreaks

**17**

Humanitarian  
crises



**3**

Grade 3 events

**37**

Grade 2 events

**2**

Grade 1 events

**45**

Ungraded events

**3**

Protracted 3 events

**4**

Protracted 2 events

**3**

Protracted 1 events

# Overview

## Contents

### 1 Overview

### 2 - 8 Ongoing events

### 9 All events currently being monitored

This Weekly Bulletin focuses on public health emergencies occurring in the WHO African Region. The WHO Health Emergencies Programme is currently monitoring 143 events in the region. This week's articles cover:

- [COVID-19 across the WHO African region](#)
- [Ebola Virus Disease in the Democratic Republic of the Congo](#)
- [Hepatitis Virus E in Chad](#)
- [Floods in South Sudan](#)

For each of these events, a brief description, followed by public health measures implemented and an interpretation of the situation is provided.

A table is provided at the end of the bulletin with information on all new and ongoing public health events currently being monitored in the region, as well as recent events that have been controlled and closed.

#### Major issues and challenges include:

- COVID-19 cases have increased for the first time since mid-August when a fall in cases was first observed in the African region. Even with this increase, there is a variation in the pandemic trends across different sub regions. While most countries have seen a sustained decline in cases, South Africa saw a sharp increase in new cases in the past week, which was largely driven by a sharp increase in Gauteng province. A new designated variant of concern, named Omicron, was also identified in South Africa, although no evidence has been found to associate the variant to the new spike. WHO continues to support initiatives to bolster genetic sequencing efforts in the African region.
- There was no new confirmed Ebola virus disease case in the Democratic Republic of the Congo in the past week, making 29 days since the last confirmed case was reported. Although, all contacts have completed their 21 days of active follow-up, some contacts remain unseen.
- Chadian health authorities declared hepatitis E outbreak in mid-November 2021 in Sategui health area, Lai health district, Tangile region. Preliminary investigations in the affected areas identified poor sanitary conditions, open defecation, and the need for heightened community surveillance. This outbreak is occurring in a context where the country's health system is already compromised by the COVID-19 pandemic and other ongoing outbreaks, namely measles, visceral leishmaniasis, floods and the humanitarian crises in the Eastern and Southern parts of the country.
- South Sudan is currently heavily affected by flooding along the Nile and Lol Rivers. The country has experienced floods for the past three consecutive years. Consequently, there has been an exodus of some 800 000 internally displaced persons who have dispersed to find higher ground. There has been a shortage of essential medical supplies and Interagency Emergency Health Kits (IEHK) as well as insecurity in some of the flood-affected counties, which are causing worsening conditions. Access to the area is difficult since conditions have rendered the roads and airstrips non-functional. Finally, deteriorating water, sanitation and hygiene conditions exacerbated by the floods can contribute to a rise in water-borne and diarrhoeal disease outbreaks.

### EVENT DESCRIPTION

The WHO African region reported 40 721 new cases of coronavirus disease (COVID-19) in the past seven days (22 – 28 November 2021), reflecting an 84.0% increase compared to the previous week. Twelve countries (Algeria, Angola, Côte d'Ivoire, Eswatini, Liberia, Malawi, Mali, Namibia, Rwanda, Senegal, South Africa, and Zimbabwe) saw a 20% or more increase in weekly cases compared to the preceding week.

Twenty (43.0%) countries reported a decrease of 20% or more in the number of new cases compared to the previous week. These countries are Benin, Botswana, Burkina Faso, Cameroon, Central African Republic, Comoros, Congo, Equatorial Guinea, Ethiopia, Gabon, Gambia, Ghana, Guinea, Guinea-Bissau, Kenya, Lesotho, Madagascar, Mauritius, Mozambique, and the United Republic of Tanzania.

Nearly all the new cases reported in the past week are concentrated in the top five countries, with 91.0% (36 835) of the cases recorded; namely South Africa (31 544 new cases, 704.0% increase, 52.3 new cases per 100 000 population); Mauritius (2 498 new cases, 73.0% decrease, 196 new cases per 100 000); Algeria (1 200 new cases, 22.0% increase, 2.7 new cases per 100 000); Ethiopia (1 062 new cases, 23.0% decrease, 0.9 new cases per 100 000); and Mauritania (531 new cases, 3.3% increase, 11.0 new cases per 100 000).

During the same reporting period, a drop in weekly COVID-19 deaths in the African region was observed as 441 deaths were reported in 26 countries, a 4.0% decline compared with the previous week. The highest numbers of new deaths were reported from South Africa (223 new deaths; 148.0% increase; 0.4 new deaths per 100 000 population), Ethiopia (58 new deaths; 2.0% decrease; 0.0 new deaths per 100 000), Algeria (37 new deaths; 0.0% change; 0.1 new deaths per 100 000), Mauritius (31 new deaths; 72.0% decrease; 2.4 new deaths per 100 000) and Mauritania (13 new deaths; 18.0% increase; 0.3 new deaths per 100 000).

Only four countries, namely Burkina Faso, Mali, Mauritius, and Niger are undergoing a COVID-19 resurgence.

Since the beginning of the COVID-19 pandemic in the African region, the cumulative number of confirmed COVID-19 cases is 6 185 142, with more than 5.8 million recoveries, giving a recovery rate of 94.4%. The total number of deaths now stands at 152 187, accounting for a CFR of 2.5%. The WHO African Region remains one of the least affected regions in the world, accounting for 2.5% of global cases and 3.0% of global deaths.

Overall, South Africa has recorded the highest number of COVID-19 cases in the region with 2 961 406 cases (48.0%), followed by Ethiopia 371 262 (6.0%), Kenya 254 951 (4.1%), Nigeria 213 982 (3.5%), and Algeria 210 152 (3.4%), accounting for 65.0% (4 011 753) of all cases. The average cumulative attack rate (number of cases per million) in the African region is estimated at 5 668 per million population, ranging from 306 to 239 590 per million population. Seychelles (239 590 cases per million population), Botswana (79 567 cases/million), Cabo Verde (69 757 cases/million), (Namibia 51 777 cases/million) and

South Africa (50 572 cases/million), are the top countries with the highest attack rate in the region. Burkina Faso (761 cases/million), Democratic Republic of the Congo (671 cases/million), United Republic of Tanzania (453 cases/million), Chad (320 cases/million) and Niger (306 cases/million), have the lowest cumulative attack rate

Likewise, most reported deaths occurred in South Africa, which accounts for 59.0% (89 797) of all deaths. Ethiopia has the second-highest number of deaths (6 740 deaths, 4.4%) followed by Algeria (6 058, 4.0%), Kenya (5 333, 3.5%) and Zimbabwe (4 705, 3.1%), all accounting for 74.0% (112 633) of all deaths reported in the region. The median number of deaths per million in the African region is estimated at 69.0/million population (range: 1.1/million –1 533/million) with an average cumulative death rate (per million) in the African region estimated at 140 million population. South Africa (1 530 deaths/million population), Namibia (1 431/million), Seychelles (1 250/million), Eswatini (1 087 million), Botswana (986 million) and Cabo Verde (635 million) are the five countries with the highest number of COVID-19 related deaths per million population. Niger (10.6/million population), Chad (11.0/million population) Burkina Faso (11.3/million), South Sudan (12.0/million) and United Republic of Tanzania (12.5/million) have the lowest number of COVID-19 related deaths per million population.

In the past seven days, 47 new health worker infections were reported from Cameroon (39), Kenya (6) and Namibia (2). An additional 803 health worker infections were reported retrospectively from Gambia. Thus far, there have been 144 694 COVID-19 infections (2.4% of all cases) among health workers in the region, with South Africa accounting for 49.0% (71 113) of the total infections. Algeria (11 936, 8.3%), Kenya (7 842, 5.4%), Zimbabwe (5 404, 3.7%) and Mozambique (4 779, 3.3%) have also recorded high numbers of health worker infections. Other countries reporting health worker infections are shown in Table 1. The United Republic of Tanzania (13.0%), Liberia (6.0%), Algeria (5.7%), Chad (5.7%), and Niger (5.2%) have the highest proportion of health worker infections by country. Only Eritrea has not reported any healthcare worker infections.

The African continent has recorded more than 8.7 million cases of COVID-19, with more than 223 100 deaths (CFR 2.5%) and more than 8.1 million people have recovered. The African continent accounts for 3.4% of global cases and 4.3% of global deaths.

More than 333 million COVID-19 doses have been received in African countries and 68% of these (226 million) of these doses have been administered. Around 98 million people in Africa are fully vaccinated. This equates to 7.1% of the African population. In comparison, 68% of people in the United Kingdom have been fully vaccinated; 58% in the United States; and 67% in the European Union.

WHO has designated the variant B.1.1.529 a variant of concern, named Omicron, basing on the emerging evidence from South Africa that the variant has caused a detrimental change in COVID-19 epidemiology. Preliminary information shows that many cases have been reported in South Africa and Botswana. Apart from Southern Africa, the variant has been found in

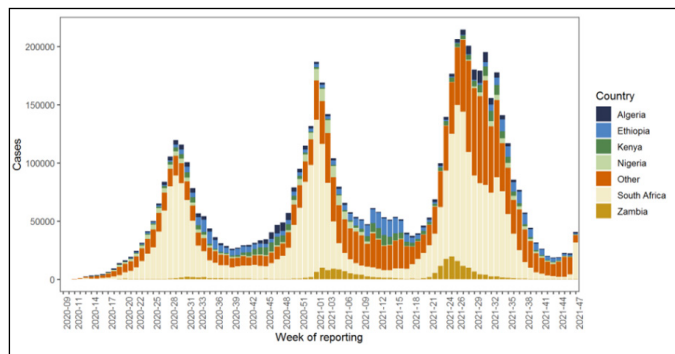


Belgium, Canada, Australia, the Netherlands, Denmark, United Kingdom, Germany, Israel, Italy, the Czech Republic and Hong Kong.. Early analysis shows that this variant has a large number of mutations that require further study. It will take a few weeks for us to understand the potential impacts of this variant.

## SITUATION INTERPRETATION

New COVID-19 cases have increased for the first time in the past 4 months. The two top countries, South Africa and Algeria, have recorded a very high increase in new cases for the second consecutive week. On the contrary, COVID-19 deaths have shown a sustained decline. WHO is currently monitoring a new variant of concern (Omicron) that has so far been identified in Botswana and South Africa. There is a need to enhance surveillance and sequencing efforts to better understand circulating SARS-CoV-2 variants. African region also needs to step up implementation of all public health and social measures to prevent transmission of COVID-19.

The weekly distribution of confirmed cases of COVID-19 in the WHO African Region by week of reporting, 25 February 2020 – 28 November 2021 ( $n = 6\,185\,142$ )



Countries with reported laboratory-confirmed COVID-19 cases and deaths: Data as of 28 November 2021

| Country                        | Total Cases      | Total Deaths   | Recovered Cases  | Case Fatality Ratio (%) | Health Worker Infections |
|--------------------------------|------------------|----------------|------------------|-------------------------|--------------------------|
| South Africa                   | 2 961 406        | 89 797         | 2 847 771        | 3.0                     | 71 113                   |
| Ethiopia                       | 371 262          | 6 740          | 348 799          | 1.8                     | 3 354                    |
| Kenya                          | 254 951          | 5 333          | 248 131          | 2.1                     | 7 846                    |
| Nigeria                        | 213 982          | 2 975          | 207 184          | 1.4                     | 3 175                    |
| Algeria                        | 210 152          | 6 058          | 144 160          | 2.9                     | 11 936                   |
| Zambia                         | 210 143          | 3 667          | 206 386          | 1.7                     | 1 121                    |
| Botswana                       | 194 909          | 2 416          | 191 961          | 1.2                     | 2 082                    |
| Mozambique                     | 151 524          | 1 940          | 149 485          | 1.3                     | 4 779                    |
| Zimbabwe                       | 133 991          | 4 705          | 128 655          | 3.5                     | 5 404                    |
| Ghana                          | 130 920          | 1 209          | 129 042          | 0.9                     | 4 763                    |
| Namibia                        | 129 160          | 3 573          | 125 472          | 2.8                     | 4 361                    |
| Uganda                         | 127 523          | 3 252          | 97 847           | 2.6                     | 2 880                    |
| Cameroon                       | 106 794          | 1 791          | 103 476          | 1.7                     | 3 631                    |
| Rwanda                         | 100 330          | 1 342          | 98 756           | 1.3                     | 682                      |
| Senegal                        | 73 985           | 1 885          | 72 087           | 2.5                     | 419                      |
| Angola                         | 65 144           | 1 733          | 63 197           | 2.7                     | 939                      |
| Malawi                         | 61 897           | 2 305          | 58 765           | 3.7                     | 2 231                    |
| Côte d'Ivoire                  | 61 708           | 704            | 60 702           | 1.1                     | 1 913                    |
| Democratic Republic of Congo   | 58 234           | 1 107          | 51 443           | 1.9                     | 728                      |
| Eswatini                       | 46 538           | 1 248          | 45 241           | 2.7                     | 1 066                    |
| Madagascar                     | 44 072           | 967            | 42 802           | 2.2                     | 70                       |
| Mauritius                      | 41 731           | 422            | 18 794           | 1.0                     | 30                       |
| Mauritania                     | 39 178           | 831            | 37 380           | 2.1                     | 24                       |
| Cabo Verde                     | 38 362           | 349            | 37 946           | 0.9                     | 140                      |
| Gabon                          | 37 298           | 279            | 32 019           | 0.7                     | 345                      |
| Guinea                         | 30 763           | 387            | 29 725           | 1.3                     | 682                      |
| United Republic of Tanzania    | 26 261           | 730            | 180              | 2.8                     | 3 351                    |
| Togo                           | 26 250           | 243            | 25 907           | 0.9                     | 891                      |
| Benin                          | 24 850           | 161            | 24 656           | 0.6                     | 139                      |
| Seychelles                     | 23 390           | 122            | 22 787           | 0.5                     | 945                      |
| Lesotho                        | 21 755           | 662            | 13 657           | 3.0                     | 473                      |
| Burundi                        | 20 415           | 14             | 20 303           | 0.1                     | 38                       |
| Congo                          | 18 905           | 354            | 16 155           | 1.9                     | 203                      |
| Mali                           | 17 340           | 605            | 15 128           | 3.5                     | 87                       |
| Burkina Faso                   | 15 711           | 281            | 15 211           | 1.8                     | 288                      |
| Equatorial Guinea              | 13 579           | 173            | 13 323           | 1.3                     | 541                      |
| South Sudan                    | 12 755           | 133            | 12 463           | 1.0                     | 294                      |
| Central African Republic       | 11 708           | 101            | 11 212           | 0.9                     | 51                       |
| Gambia                         | 9 989            | 342            | 9 638            | 3.4                     | 142                      |
| Eritrea                        | 7 318            | 60             | 7 084            | 0.8                     | 0                        |
| Niger                          | 6 958            | 254            | 6 541            | 3.7                     | 355                      |
| Guinea-Bissau                  | 6 440            | 148            | 6 268            | 2.3                     | 23                       |
| Sierra Leone                   | 6 402            | 121            | 4 398            | 1.9                     | 264                      |
| Liberia                        | 5 823            | 287            | 5 531            | 4.9                     | 346                      |
| Chad                           | 5 107            | 175            | 4 874            | 3.4                     | 292                      |
| Comoros                        | 4 498            | 150            | 4 284            | 3.3                     | 155                      |
| Sao Tome and Principe          | 3 731            | 56             | 3 675            | 1.5                     | 102                      |
| <b>Cumulative Cases (N=47)</b> | <b>6 185 142</b> | <b>152 187</b> | <b>5 820 501</b> | <b>2.5</b>              |                          |

\*Total cases includes one probable case from Democratic Republic of the Congo

[Go to overview](#)

4

[Go to map of the outbreaks](#)

## EVENT DESCRIPTION

The last known confirmed case of Ebola virus disease (EVD) outbreak in Beni Health Zone (HZ) in North Kivu Province of the Democratic Republic of the Congo was reported on the 30 October 2021. Therefore, 29 days have elapsed with no positive EVD case reported.

The total number of EVD cases remains 11 as of 28 November 2021, including eight confirmed cases (with four community deaths) and three probable cases in Beni HZ. Two EVD survivors have been registered.

The overall case fatality rate (CFR) is 81.8% (9/11) and 75.0% (6/8) among confirmed cases.

Thus far, three (17.0%) out of the 18 health areas in Beni HZ have reported confirmed cases, namely, Butsili (6 cases), Bundji (1 case) and Ngilinga (1 case). Children under the age of five years account for 50.0% (4/8) of the cases.

As of 27 November 2021, all the listed contacts had completed their 21 days of follow-up period and were discharged from active monitoring. One of the contacts lost to follow up was found on day 35 in Butsili HA. A total 30 contacts remain unseen since day 1 of their follow-up period.

A total of 266 new alerts were notified including three deaths from three health zones, of which 216 (81.0%) were investigated and 25 (8.2%) validated as EVD suspected cases. Blood samples were collected from all suspected cases.

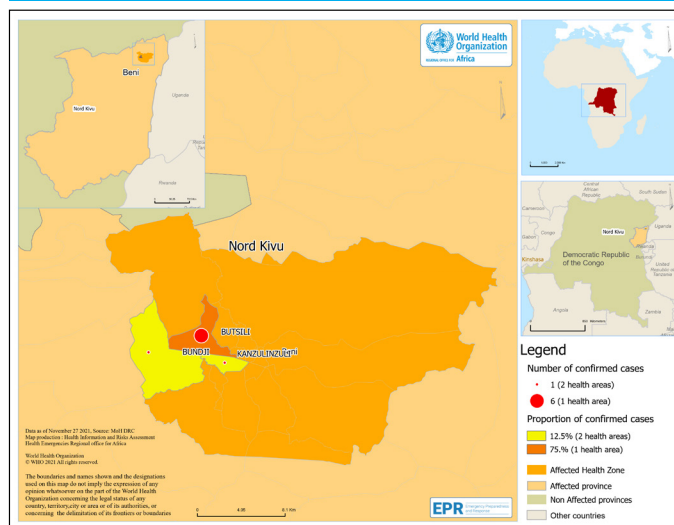
On 27 November 2021, 14 frontline healthcare workers were vaccinated from three sites (10 in Ngongolio, 3 in Mandrandele and 1 in Mabakanga). The total number of people vaccinated since the beginning of the vaccination activities is 696, including 98 high risk contacts, 300 contacts of contacts and 258 probable contacts with rVSV-ZEBOV-GP vaccine and 40 frontline health care workers with ERVEBO vaccine. Furthermore, 121 frontline health care workers were vaccinated, including 11 high risk contacts, 37 contacts of contacts and 73 probable contacts.

Since the declaration of the EVD outbreak in Beni HZ, a total 1 163 samples including 439 swabs have been collected, of which eight were confirmed EVD cases.

## PUBLIC HEALTH ACTIONS

- The Chief Health Officer of Beni presided over a zonal coordination committee meeting, during which the official delivery of a nursery at Beni EVD treatment centre was made.
- Community sensitization was conducted at a school for the deaf where 42 persons participated from Ndindi area of Kanzulinzuli HA.
- Two interactive radio talk shows were conducted with a focus on the importance of community-based surveillance as a strategy to control EVD.
- In Butsili HA, 24 individuals were counselled on adherence to the 21-day follow-up period. More so, four exit counselling were conducted for the non-cases discharged from the Beni EVD treatment Centre.
- A total of 14 243 home visits were conducted and 43 004 persons were sensitized on EVD prevention on 27 November 2021; 263 alerts were notified.

## Distribution of confirmed cases of Ebola Virus Disease in the Democratic Republic of the Congo, as of 27 November 2021.



- Alert monitoring continues using both active and passive surveillance in health facilities and communities. The response team visited 228 health facilities for active case finding and 216 alerts were listed. A total of 210 (97.2%) alerts were investigated and of these, nine (4.2%) were validated as suspected cases of EVD and samples were collected.
- Three suspected cases are currently under medical care at the isolation facilities in Boikene (1) and Kanzulinzuli (2).
- A total of 100 473 travellers were screened out of 102 555 persons that went through the different points of control. Six alerts were notified from travellers at the points of entry, and none was validated as a suspected case of EVD.
- The three suspected cases in isolation centres are being offered psychological support services, including 12 care takers. In the community, 209 persons participated in 25 psychosocial sessions on different aspects of the EVD response.

## SITUATION INTERPRETATION

In the past 29 days, no new confirmed case of EVD has been notified in the Democratic Republic of the Congo. Contact follow-up remains of particular concern with many contacts lost to follow-up. Furthermore, the response activities against EVD in Beni is currently affected by inadequate resources for the response, and lack of efficient standardized isolation centres in some areas.

## PROPOSED ACTIONS

- The response teams need to strengthen community engagement to increase uptake of EVD preventive measures, especially vaccination.
- More resources need to be mobilized to strengthen response activities.
- Challenges around community surveillance, contact follow-up and other response measures need urgent action.



## EVENT DESCRIPTION

Suspected cases of hepatitis E virus (HEV) have been reported in Chad since week 34 (ending 29 August 2021), with one case followed by two cases in week 35 (ending 5 September 2021). This was followed by three silent weeks with no cases until week 39 (ending 3 October) when 82 cases were reported in a single week.

On 1 October 2021, Chadian health authorities commenced an investigation of 25 clustered suspect HEV cases presenting with jaundice, fever, and epigastric pain in Sategui village, Lai health district, Tandjile region. Twenty samples were collected and referred to the national laboratory at Ndjamena general hospital. The results of the analysis were 65% (13/20) positive for HEV with the rapid diagnostic test (RDT) and 15% (3/20) positive for hepatitis virus C with enzyme-linked immunosorbent assay (ELISA) testing. The same samples were referred to the Center Pasteur in Yaoundé for confirmation and 12 samples tested positive for HEV by ELISA.

As of 20 November 2021, a total of 377 cases with 2 deaths (CFR = 0.5%) had been reported. Males are most affected with 57% (215) of cases. The most affected age group is that of less than 10 years old with 86 cases (22.8%).

The outbreak is localized in Sategui health area, Lai health district in Tangile region. Six villages (Darassalam, Dougounou, Goundo, Mallah, Sategui and Tchokla) have been affected so far with Sategui village 82 (21.7%) cases reporting most cases, followed by Darassalam 76 (20.2%) cases and Mallah with 64 (16.2%) cases.

In total 49 blood samples have been collected since the beginning of the outbreak, of which 20 have been analyzed and the rest are still under investigation.

## PUBLIC HEALTH ACTIONS

- Coordination meetings for the district management team and Ministry of Health team and partners were organized

- Field investigations in the affected areas have been conducted and samples (human and environmental) were collected and laboratory analysis performed
- Provision of water and sanitation and infection, prevention and control supplies to the affected areas has been done
- Risk communication activities and community active case finding are ongoing

## SITUATION INTERPRETATION

Hepatitis E is endemic in Chad, particularly in the Tangile region, which previously experienced large-scale outbreaks in 2017 and 2018. Poor hygiene and sanitation conditions coupled with limited access to safe water are risk factors for outbreaks in this region. All the six villages that reported cases have few improved water points that are below the standards of 500 inhabitants per water point. The ongoing floods in the affected southern part of the country may affect the quality of the outbreak response.

## PROPOSED ACTION

- Hepatitis E remains a disease linked to poor hygienic and sanitation conditions and insufficient access to drinking water. It is therefore important to put in place the necessary actions to improve these conditions and optimize access to safe drinking water.
- Enhanced surveillance and investigation activities should be conducted in the affected areas.
- Vaccination against hepatitis E is part of the response measures and should be used whenever necessary.
- Risk communication and community engagement activities must continue throughout the affected and at-risk areas.



WHO team during a field visit to one of the affected communities

## EVENT DESCRIPTION

South Sudan has been impacted by floods for the third consecutive year. The escalating flooding in 2021 began in May and, as of 3 November 2021, has affected over 800 000 people in areas along the Nile and Lol rivers and Sudd marshlands. Flooding has affected over 30 counties across eight states with the communities in Jonglei, Upper Nile and Unity states being the most affected.

A rapidly worsening flooding situation was noted in October with a significant increase in the number of people and locations affected, particularly in Jonglei State (267 000 people affected), Unity State (196 000 people affected), and Upper Nile (125,000 people affected). The rising water levels and destruction of dykes have resulted in more flooding in counties in Unity and Jonglei States.

Access to flood-affected areas remain a challenge since most of the roads are impassable. In Unity State, the main supply route from Sudan has been cut off (Figure 1) and the airstrip is an island protected by weak dykes as well as the access road to the airstrip. Helicopters are used for transport of emergency supplies and response personnel since fixed-wing aircrafts cannot land on the airstrips.

The floods have also led to the displacement and relocation of population to higher grounds, which has caused the creation of four new temporary internally displaced persons (IDPs) sites for more than 32 650 flood-affected people in Rubkona, Unity State. Furthermore, the floods have damaged farmlands, and crops, roads, latrines, houses, health facilities and other essential amenities have been submerged in floodwater. In Rubkona, animals are dying by the hundreds daily and their carcasses can be seen floating in floodwater. Because floods have affected some of the same areas year after year, the people's ability to cope with the situation has not improved.

Additionally, the country is currently facing its highest levels of food insecurity and malnutrition since independence, with 7.24 million people acutely food insecure. In addition, multiple infectious disease outbreaks including the COVID-19 pandemic, circulating vaccine-derived poliovirus type 2 and hepatitis E virus continue to contribute to the humanitarian needs of the communities.

Health facilities have not been spared, with about 70 health facilities either cut-off, submerged, or damaged by the severe flooding, estimated to affected 150 000 people. Jonglei State has accounted for 40% of all closed health facilities, followed by Unity State with 32% of the closed health facilities. In Unity State, 27 health facilities have been relocated to higher grounds due to rising water levels. In addition to triggering immediate humanitarian needs, the severe flooding will result in increased vector- and water-borne diseases and increased food insecurity in the coming months. More than two-thirds of the flood-affected counties are facing high levels of food insecurity that deepens the humanitarian situation for the affected communities.

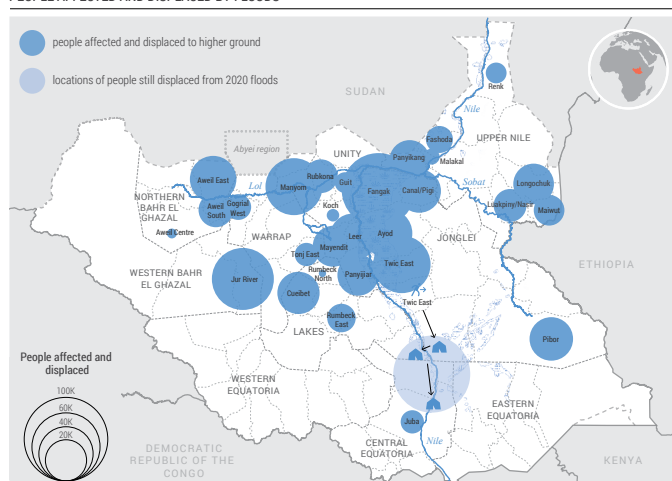
## PUBLIC HEALTH ACTIONS

- Health cluster partners supported rapid needs assessment in flood-affected counties to establish critical health needs and gaps.

A snapshot of areas affected by floods in South Sudan, as of 4 November 2021.



PEOPLE AFFECTED AND DISPLACED BY FLOODS



- Community-led flood committees were activated to inform them about potential flooding hazards and to discuss flood mitigation measures.
- Bilateral funding sources as well as part of the South Sudan Humanitarian Fund of \$20 million has supported the flood response.
- Community-based support is being provided through cash-for-work and food-for-work assistance, with flood-affected communities collaborating with humanitarian organizations
- Interagency Emergency Health Kits (IEHKs), WHO Health Emergency Kits, cholera investigation and treatment kits, pneumonia kits, and severe acute malnutrition with medical complications treatment kits in children under five have been distributed to support service provisions for the flood-affected populations.
- Pre-emptive oral cholera vaccination campaigns are being planned for IDPs in Bentiu Town, Rubkona Town and Bentiu IDP camp in Unity State.
- A multisectoral response strategy is being implemented for the hepatitis E outbreak in Bentiu IDP camp. Partners are supporting case management, surveillance and referral of suspected cases. Water, sanitation and hygiene partners are scaling up hygiene and health promotion, water quality surveillance and solid waste management. A hepatitis E vaccination campaign is being planned for 27 000 individuals aged 16-40 years, set to begin at the end of 2021.



## SITUATION INTERPRETATION

Floods and continued rains are devastating parts of South Sudan causing thousands of people to be displaced. The damage to the already fragile infrastructure is affecting humanitarian access to many of the affected areas and cutting people off from vital services such as health facilities. Inadequate sanitation and overcrowding in newly established and existing camps may escalate the ongoing hepatitis E outbreak. The risk of increased propagation of vector-borne diseases, especially malaria remains high, given the likely increase in vector density due to favourable mosquito breeding sites and conditions.

## PROPOSED ACTIONS

- ▶ The national authorities and humanitarian partners in South Sudan need to scale up response to the floods in order to avert potential deterioration of the situation and prevent disease outbreaks.
- ▶ Adequate funds should be mobilized to implement priority and targeted interventions.



Medical supplies allocated to flood affected areas being dispatched to partners. Photo WHO

# All events currently being monitored by WHO AFRO

| Country                                                                                                                                                                                                                                                                                                                                                                                                                                                                                                                                                                                                                                                                                                                                                                                                                                                                                                                                                                                                                                                                                                                                          | Event                  | Grade    | Date notified to WCO | Start of reporting period | End of reporting period | Total cases | Cases Confirmed | Deaths | CFR  |
|--------------------------------------------------------------------------------------------------------------------------------------------------------------------------------------------------------------------------------------------------------------------------------------------------------------------------------------------------------------------------------------------------------------------------------------------------------------------------------------------------------------------------------------------------------------------------------------------------------------------------------------------------------------------------------------------------------------------------------------------------------------------------------------------------------------------------------------------------------------------------------------------------------------------------------------------------------------------------------------------------------------------------------------------------------------------------------------------------------------------------------------------------|------------------------|----------|----------------------|---------------------------|-------------------------|-------------|-----------------|--------|------|
| <b>New Events</b>                                                                                                                                                                                                                                                                                                                                                                                                                                                                                                                                                                                                                                                                                                                                                                                                                                                                                                                                                                                                                                                                                                                                |                        |          |                      |                           |                         |             |                 |        |      |
| Chad                                                                                                                                                                                                                                                                                                                                                                                                                                                                                                                                                                                                                                                                                                                                                                                                                                                                                                                                                                                                                                                                                                                                             | Hepatitis E            | Ungraded | 25-Nov-21            | 1-Oct-21                  | 20-Nov-21               | 377         | 12              | 2      | 0.5% |
| Hepatitis E outbreak had been declared by Chadian health authorities mid-November 2021 in Sategui health area, Lai health district in the Tandjile region. As of 20 Nov 2021, there have been 377 suspected cases and 2 deaths (CFR 0.5%) reported. Among those affected, the majority have been men with 216 cases (57%) and the most affected age group has been less than 10 years of age with 90 cases (23.8%).                                                                                                                                                                                                                                                                                                                                                                                                                                                                                                                                                                                                                                                                                                                              |                        |          |                      |                           |                         |             |                 |        |      |
| Senegal                                                                                                                                                                                                                                                                                                                                                                                                                                                                                                                                                                                                                                                                                                                                                                                                                                                                                                                                                                                                                                                                                                                                          | Rift Valley Fever      | Ungraded | 25-Nov-21            | 18-Nov-21                 | 18-Nov-21               | 3           | 2               | 0      | 0.0% |
| An outbreak of Rift Valley fever (RVF) is ongoing in Senegal declared by health authorities after confirmation of the first case on 10 November 2021 by the Pasteur Institute of Dakar. As of 18 November 2021, a total of 3 cases and zero death (CFR 0.0%) are reported in the health districts of Gossas and Diofior, in the Fatick region.                                                                                                                                                                                                                                                                                                                                                                                                                                                                                                                                                                                                                                                                                                                                                                                                   |                        |          |                      |                           |                         |             |                 |        |      |
| <b>Ongoing Events</b>                                                                                                                                                                                                                                                                                                                                                                                                                                                                                                                                                                                                                                                                                                                                                                                                                                                                                                                                                                                                                                                                                                                            |                        |          |                      |                           |                         |             |                 |        |      |
| Algeria                                                                                                                                                                                                                                                                                                                                                                                                                                                                                                                                                                                                                                                                                                                                                                                                                                                                                                                                                                                                                                                                                                                                          | COVID-19               | Grade 3  | 25-Feb-2020          | 25-Feb-2020               | 28-Nov-21               | 210 152     | 210 152         | 6 058  | 2.9% |
| From 25 February 2020 to 28 November 2021, a total of 210 152 confirmed cases of COVID-19 with 6 058 deaths (CFR 2.9%) have been reported from Algeria. A total of 144 160 cases have recovered.                                                                                                                                                                                                                                                                                                                                                                                                                                                                                                                                                                                                                                                                                                                                                                                                                                                                                                                                                 |                        |          |                      |                           |                         |             |                 |        |      |
| Angola                                                                                                                                                                                                                                                                                                                                                                                                                                                                                                                                                                                                                                                                                                                                                                                                                                                                                                                                                                                                                                                                                                                                           | COVID-19               | Grade 3  | 21-Mar-20            | 21-Mar-20                 | 28-Nov-21               | 65 144      | 65 144          | 1 733  | 2.7% |
| The first COVID-19 confirmed case was reported in Angola on 21 March 2020. As of 28 November 2021, a total of 65 144 confirmed COVID-19 cases have been reported in the country with 1 733 deaths and 63 197 recoveries.                                                                                                                                                                                                                                                                                                                                                                                                                                                                                                                                                                                                                                                                                                                                                                                                                                                                                                                         |                        |          |                      |                           |                         |             |                 |        |      |
| Angola                                                                                                                                                                                                                                                                                                                                                                                                                                                                                                                                                                                                                                                                                                                                                                                                                                                                                                                                                                                                                                                                                                                                           | Poliomyelitis (cVDPV2) | Grade 2  | 8-May-2019           | 1-Jan-19                  | 26-Nov-21               | 133         | 133             | 0      | 0.0% |
| No case of circulating vaccine-derived poliovirus type 2 (cVDPV2) was reported this week. There were 3 cases reported in 2020. The total number of cases reported in 2019 remains 130. These cases are from several outbreaks which occurred in 2019.                                                                                                                                                                                                                                                                                                                                                                                                                                                                                                                                                                                                                                                                                                                                                                                                                                                                                            |                        |          |                      |                           |                         |             |                 |        |      |
| Benin                                                                                                                                                                                                                                                                                                                                                                                                                                                                                                                                                                                                                                                                                                                                                                                                                                                                                                                                                                                                                                                                                                                                            | Cholera                | Ungraded | 28-Mar-21            | 28-Mar-21                 | 21-Nov-21               | 541         | 21              | 9      | 1.7% |
| Since week 12 (ending 28 March 2021) of this year, cases of cholera have been reported in Benin. As of 21 November 2021, a total of 541 cases with nine deaths (CFR 1.7%) are reported so far.                                                                                                                                                                                                                                                                                                                                                                                                                                                                                                                                                                                                                                                                                                                                                                                                                                                                                                                                                   |                        |          |                      |                           |                         |             |                 |        |      |
| Benin                                                                                                                                                                                                                                                                                                                                                                                                                                                                                                                                                                                                                                                                                                                                                                                                                                                                                                                                                                                                                                                                                                                                            | COVID-19               | Grade 3  | 17-Mar-20            | 16-Mar-20                 | 24-Oct-21               | 24 749      | 24 749          | 161    | 0.7% |
| The Ministry of Health in Benin announced the first confirmed case of COVID-19 on 16 March 2020. As of 24 October 2021, a total of 24 749 cases have been reported in the country with 161 deaths and 24 346 recoveries.                                                                                                                                                                                                                                                                                                                                                                                                                                                                                                                                                                                                                                                                                                                                                                                                                                                                                                                         |                        |          |                      |                           |                         |             |                 |        |      |
| Benin                                                                                                                                                                                                                                                                                                                                                                                                                                                                                                                                                                                                                                                                                                                                                                                                                                                                                                                                                                                                                                                                                                                                            | Meningitis             | Ungraded | 1-Jun-2021           | 1-Jan-21                  | 15-Oct-21               | 440         | 82              | 31     | 7.0% |
| A total of 440 cases and 31 deaths (CFR 7.0%) resulting from meningitis were reported from Week 1 to week 41, 2021 in Benin.                                                                                                                                                                                                                                                                                                                                                                                                                                                                                                                                                                                                                                                                                                                                                                                                                                                                                                                                                                                                                     |                        |          |                      |                           |                         |             |                 |        |      |
| Benin                                                                                                                                                                                                                                                                                                                                                                                                                                                                                                                                                                                                                                                                                                                                                                                                                                                                                                                                                                                                                                                                                                                                            | Poliomyelitis (cVDPV2) | Grade 2  | 8-Aug-2019           | 8-Aug-2019                | 26-Nov-21               | 13          | 13              | 0      | 0.0% |
| No new cases of circulating vaccine-derived poliovirus type 2 (cVDPV2) were reported this week. Two cases have been reported so far in 2021. There were three cVDPV2 cases reported in 2020, and 8 in 2019. These cases are all linked to the Jigawa outbreak in Nigeria.                                                                                                                                                                                                                                                                                                                                                                                                                                                                                                                                                                                                                                                                                                                                                                                                                                                                        |                        |          |                      |                           |                         |             |                 |        |      |
| Botswana                                                                                                                                                                                                                                                                                                                                                                                                                                                                                                                                                                                                                                                                                                                                                                                                                                                                                                                                                                                                                                                                                                                                         | COVID-19               | Grade 3  | 30-Mar-20            | 28-Mar-20                 | 22-Nov-21               | 194 909     | 194 909         | 2 416  | 1.2% |
| On 30 March 2020, the Minister of Health and Wellness in Botswana reported three confirmed cases of COVID-19. As of 22 November 2021, a total of 194 909 confirmed COVID-19 cases were reported in the country including 2 416 deaths and 191 961 recovered cases.                                                                                                                                                                                                                                                                                                                                                                                                                                                                                                                                                                                                                                                                                                                                                                                                                                                                               |                        |          |                      |                           |                         |             |                 |        |      |
| Burkina Faso                                                                                                                                                                                                                                                                                                                                                                                                                                                                                                                                                                                                                                                                                                                                                                                                                                                                                                                                                                                                                                                                                                                                     | Humanitarian crisis    | Grade 2  | 1-Jan-19             | 1-Jan-19                  | 31-Oct-21               | -           | -               | -      | -    |
| Since 2015, the security situation in the Sahel and East of Burkina Faso has gradually deteriorated as a result of attacks by armed groups. This has resulted in mass displacement of over 1 407 685 million (6.3% of the total population) internally displaced persons as of 31 October 2021 in all 13 regions. The most affected regions were Sahel (493 708, 35.1%) and Centre-Nord (466 314, 33.1%). There are also some 23 610 refugees in the country of which the majority (23 173, 98.1%) are from Mali. According to the World Food Programme, 3.5 million people are in need of humanitarian assistance and 2.87 million people are food insecure as of October 2021. A cumulative of 3 205 incidents have been reported from January to October 2021 with 343 recorded in October 2021. As of 31 October 2021, 395 health facilities are affected by insecurity in the 6 regions most affected by the crisis, of which 89 (24%) are completely closed depriving more than 850K inhabitants access to health care. About 92% of closed health facilities are due to direct attacks by unidentified armed groups on health facilities. |                        |          |                      |                           |                         |             |                 |        |      |
| Burkina Faso                                                                                                                                                                                                                                                                                                                                                                                                                                                                                                                                                                                                                                                                                                                                                                                                                                                                                                                                                                                                                                                                                                                                     | COVID-19               | Grade 3  | 10-Mar-20            | 9-Mar-20                  | 21-Nov-21               | 15 711      | 15 711          | 281    | 1.8% |
| Between 9 March 2020 and 21 November 2021, a total of 15 711 confirmed cases of COVID-19 with 281 deaths and 15 211 recoveries have been reported from Burkina Faso.                                                                                                                                                                                                                                                                                                                                                                                                                                                                                                                                                                                                                                                                                                                                                                                                                                                                                                                                                                             |                        |          |                      |                           |                         |             |                 |        |      |
| Burkina Faso                                                                                                                                                                                                                                                                                                                                                                                                                                                                                                                                                                                                                                                                                                                                                                                                                                                                                                                                                                                                                                                                                                                                     | Poliomyelitis (cVDPV2) | Grade 2  | 1-Jan-20             | 1-Jan-20                  | 26-Nov-21               | 67          | 67              | 0      | 0.0% |
| No new cases of circulating vaccine-derived poliovirus type 2 (cVDPV2) were reported this week. There are two case reported in 2021, and in 2020, 65 were reported. The country is affected by different outbreaks, one linked to the Jigawa outbreak in Nigeria and one to the Savanes outbreak in Togo.                                                                                                                                                                                                                                                                                                                                                                                                                                                                                                                                                                                                                                                                                                                                                                                                                                        |                        |          |                      |                           |                         |             |                 |        |      |
| Burundi                                                                                                                                                                                                                                                                                                                                                                                                                                                                                                                                                                                                                                                                                                                                                                                                                                                                                                                                                                                                                                                                                                                                          | Cholera                | Ungraded | 15-Nov-21            | 7-Nov-21                  | 7-Nov-21                | 1           | 1               | 0      | 0.0% |
| During week 44 (ending 7 November 2021), one confirmed case of cholera and zero death (CFR 0.0%) was reported from Cibitoke health district in Burundi. This is the first case of cholera reported from Burundi in 2021. Last year a total of 95 cholera cases and one death (CFR 1.1%) were reported in Burundi with 30 cases and zero death from Cibitoke health district. In 2019 cases were also reported from Cibitoke health district during a larger outbreak of which 1074 cases, 7 deaths (CFR 0.7%) were reported in Burundi. This large outbreak affected Bujumbura Mairie, Bujumbura Rurale, Cibitoke and Buzanza health districts.                                                                                                                                                                                                                                                                                                                                                                                                                                                                                                  |                        |          |                      |                           |                         |             |                 |        |      |

| Country                                                                                                                                                                                                                                                                                                                                                                                                                                                                                                                                                                                                                                                                                          | Event                                                  | Grade        | Date notified to WCO | Start of reporting period | End of reporting period | Total cases | Cases Confirmed | Deaths | CFR   |
|--------------------------------------------------------------------------------------------------------------------------------------------------------------------------------------------------------------------------------------------------------------------------------------------------------------------------------------------------------------------------------------------------------------------------------------------------------------------------------------------------------------------------------------------------------------------------------------------------------------------------------------------------------------------------------------------------|--------------------------------------------------------|--------------|----------------------|---------------------------|-------------------------|-------------|-----------------|--------|-------|
| Burundi                                                                                                                                                                                                                                                                                                                                                                                                                                                                                                                                                                                                                                                                                          | COVID-19                                               | Grade 3      | 31-Mar-20            | 18-Mar-20                 | 28-Nov-21               | 20 415      | 20 415          | 14     | 0.1%  |
| On 31 March 2020, the Minister of Health in Burundi reported the first two confirmed cases of COVID-19. As of 28 November 2021, the total number of confirmed COVID-19 cases is 20 415, including 14 deaths and 20 303 recovered.                                                                                                                                                                                                                                                                                                                                                                                                                                                                |                                                        |              |                      |                           |                         |             |                 |        |       |
| Burundi                                                                                                                                                                                                                                                                                                                                                                                                                                                                                                                                                                                                                                                                                          | Measles                                                | Ungraded     | 23-Mar-20            | 1-Jan-21                  | 23-Oct-21               | 557         | 496             | 0      | 0.0%  |
| The measles epidemic has been declared since November 2019 in camps hosting Congolese refugees and then spread to other communities. In 2020, a total of 1 968 cases were reported in 46 of the country's 47 districts throughout 2020, 1 585 confirmed, 6 deaths. As of week 41, 2021, Burundi has reported a total of 557 suspected cases, 496 reported by case-by-case surveillance with no death, 72 confirmed by IgM+ 274 by epidemiological link and 6 clinical cases. Six districts are currently in outbreak mode : Bubanza, Mpanda, Bugarama, Musinga, Rumonge and Cibitoke.                                                                                                            |                                                        |              |                      |                           |                         |             |                 |        |       |
| Cameroon                                                                                                                                                                                                                                                                                                                                                                                                                                                                                                                                                                                                                                                                                         | Humanitarian crisis (Far North, North, Adamawa & East) | Protracted 2 | 31-Dec-2013          | 27-Jun-2017               | 31-Oct-21               | -           | -               | -      | -     |
| According to UNHCR and OCHA reports, an estimated 1.2 million people need assistance, 341 535 people are internally displaced as of 31 October 2021. IDPs have been leaving the Mayo-Sava division during the last months due to attacks by NSAG where improvised explosive devices have been identified and were attempted to be deactivated.                                                                                                                                                                                                                                                                                                                                                   |                                                        |              |                      |                           |                         |             |                 |        |       |
| Cameroon                                                                                                                                                                                                                                                                                                                                                                                                                                                                                                                                                                                                                                                                                         | Humanitarian crisis (NW & SW)                          | Protracted 2 | 1-Oct-16             | 27-Jun-2018               | 31-Oct-21               | -           | -               | -      | -     |
| According to reports from UNHCR, an estimated 711 056 IDPs have been registered while 466 578 returnees have been reported as of 31 October 2021. There have continued to be reports of targeted attacks on various groups such as traditional leaders, school staff, students, and humanitarian workers. Schools resumed session, but teachers and students faced attacks. There has been an increase in the use of improvised explosive devices (IEDs), carjacking, and clashes between security forces and NSAGs, leading to civilian population displacement. There were also 454 854 refugees as of 31 October 2021, of which more than 333K (73.3%) arrived from Central African Republic. |                                                        |              |                      |                           |                         |             |                 |        |       |
| Cameroon                                                                                                                                                                                                                                                                                                                                                                                                                                                                                                                                                                                                                                                                                         | Cholera                                                | Grade 2      | 1-Jan-21             | 5-Aug-2021                | 11-Nov-21               | 136         | 3               | 16     | 11.8% |
| Since the beginning of this year up to 11 November 2021, 136 suspected cases of Cholera have been notified from Far-North, North, Centre, South West and Littoral regions. Eleven deaths are reported so far ( CFR 6.7%) as of 11 November 2021. The intensification of disease surveillance as well as the management of notified cases are ongoing.                                                                                                                                                                                                                                                                                                                                            |                                                        |              |                      |                           |                         |             |                 |        |       |
| Cameroon                                                                                                                                                                                                                                                                                                                                                                                                                                                                                                                                                                                                                                                                                         | COVID-19                                               | Grade 3      | 6-Mar-20             | 6-Mar-20                  | 17-Nov-21               | 106 794     | 106 794         | 1 791  | 1.7%  |
| The Cameroon Ministry of Health announced the confirmation of the first COVID-19 case on 6 March 2020. As of 17 October 2021, a total of 106 794 cases have been reported, including 1 791 deaths and 103 476 recoveries.                                                                                                                                                                                                                                                                                                                                                                                                                                                                        |                                                        |              |                      |                           |                         |             |                 |        |       |
| Cameroon                                                                                                                                                                                                                                                                                                                                                                                                                                                                                                                                                                                                                                                                                         | Measles                                                | Ungraded     | 2-Apr-2019           | 1-Jan-21                  | 14-Oct-21               | 1 484       | 617             | 8      | 0.5%  |
| From Epi week 1 to 42, 2021, Cameroon has reported 1 484 suspected with 8 deaths (CFR 1.9%). Of the 1 000 investigated cases, 617 were positive including 224 cases IgM+, 82 clinically compatible and 139 epidemiologically linked; 65% of the children are under 5 years of age and only 33% known to be vaccinated with at least 1 dose of MCV. Twenty one districts with confirmed outbreak spread across 7 regions of country.                                                                                                                                                                                                                                                              |                                                        |              |                      |                           |                         |             |                 |        |       |
| Cameroon                                                                                                                                                                                                                                                                                                                                                                                                                                                                                                                                                                                                                                                                                         | Poliomyelitis (cVDPV2)                                 | Grade 2      | 1-Jan-20             | 1-Jan-20                  | 19-Nov-21               | 8           | 8               | 0      | 0.0%  |
| No case of circulating vaccine-derived poliovirus type 2 (cVDPV2) was reported this week. There were seven cases reported in 2020.                                                                                                                                                                                                                                                                                                                                                                                                                                                                                                                                                               |                                                        |              |                      |                           |                         |             |                 |        |       |
| Cameroon                                                                                                                                                                                                                                                                                                                                                                                                                                                                                                                                                                                                                                                                                         | Yellow fever                                           | Grade 2      | 7-Feb-2021           | 4-Jan-21                  | 14-Nov-21               | 35          | 24              | 7      | 20.0% |
| From 1 January to 14 November 2021, a total of 35 presumptive cases of Yellow fever tested positive by plaque reduction neutralization test (PRNT) and three by PCR at the Centre Pasteur Cameroun, of which seven deaths were recorded. These cases originated from nine different regions with a total of 19 health districts (HDs) affected: Adamaoua region, Central region, East region, Far North region, Littoral region, North region, North-West region, South region, and West region. Some of the PRNT-positive cases had a history of vaccination against Yellow fever.                                                                                                              |                                                        |              |                      |                           |                         |             |                 |        |       |
| Cape Verde                                                                                                                                                                                                                                                                                                                                                                                                                                                                                                                                                                                                                                                                                       | COVID-19                                               | Grade 3      | 19-Mar-20            | 18-Mar-20                 | 28-Nov-21               | 38 362      | 38 362          | 349    | 0.9%  |
| The first COVID-19 confirmed case was reported in Cabo Verde on 19 March 2020. As of 28 November 2021, a total of 38 362 confirmed COVID-19 cases including 349 deaths and 37 946 recoveries were reported in the country.                                                                                                                                                                                                                                                                                                                                                                                                                                                                       |                                                        |              |                      |                           |                         |             |                 |        |       |
| Central African Republic                                                                                                                                                                                                                                                                                                                                                                                                                                                                                                                                                                                                                                                                         | Humanitarian crisis                                    | Protracted 2 | 11-Dec-2013          | 11-Dec-2013               | 25-Nov-21               | -           | -               | -      | -     |
| According to OCHA figures, 3.1 million people (63% of the total population) are in need of assistance and protection and will continue to need it in 2022. There are 722 101 people that are internally displaced as of 25 Nov 2021 and 733K persons are refugees in neighboring countries. Among the problems people face are recurring violence and continued disruptions of basic services deteriorating the living conditions. Displacements were mostly caused by clashes between the Central African Armed Forces (FACA) and their allies against armed groups, fear of abuses by armed groups, and flooding as well. Food insecurity is also estimated to be 2.4 million people in 2022.  |                                                        |              |                      |                           |                         |             |                 |        |       |
| Central African Republic                                                                                                                                                                                                                                                                                                                                                                                                                                                                                                                                                                                                                                                                         | COVID-19                                               | Grade 3      | 14-Mar-20            | 14-Mar-20                 | 17-Nov-21               | 11 708      | 11 708          | 101    | 0.9%  |
| The Ministry of Health and population announced the confirmation of the first COVID-19 case in the Central African Republic on 14 March 2020. As of 17 November 2021, a total of 11 708 confirmed cases, 101 deaths and 11 212 recovered were reported.                                                                                                                                                                                                                                                                                                                                                                                                                                          |                                                        |              |                      |                           |                         |             |                 |        |       |



| Country                                                                                                                                                                                                                                                                                                                                                                                                                                                                                                                                                                                                                                                                                                                                                                                                                                                                     | Event                  | Grade    | Date notified to WCO | Start of reporting period | End of reporting period | Total cases | Cases Confirmed | Deaths | CFR  |
|-----------------------------------------------------------------------------------------------------------------------------------------------------------------------------------------------------------------------------------------------------------------------------------------------------------------------------------------------------------------------------------------------------------------------------------------------------------------------------------------------------------------------------------------------------------------------------------------------------------------------------------------------------------------------------------------------------------------------------------------------------------------------------------------------------------------------------------------------------------------------------|------------------------|----------|----------------------|---------------------------|-------------------------|-------------|-----------------|--------|------|
| Central African Republic                                                                                                                                                                                                                                                                                                                                                                                                                                                                                                                                                                                                                                                                                                                                                                                                                                                    | Measles                | Grade 2  | 15-Mar-19            | 1-Jan-21                  | 10-Oct-21               | 2 263       | 246             | 9      | 0.4% |
| From 1 January to 19 September 2021 : 2 263 suspected cases have been reported, 210 cases with blood samples out of a total 608 investigated, 246 confirmed cases (65 IgM+ cases, 170 by epidemiological link and 11 compatible cases) and 9 deaths (CFR : 0.2%). Eight health districts (out of 35) have reached the epidemic threshold (Bossebelé, Berbérati, Sangha-Mbaéré; Nanga-Boguila, Batangafo, Mbaiki, Nana Gebrizi and Vakaga); 49% of children are less than 5 years of age; 42% were not vaccinated. From the beginning of outbreak in 2019 to 19 August 2021, a total of 35 468 suspected cases have been notified and 197 deaths (CFR of 0.56%) within affected districts.                                                                                                                                                                                   |                        |          |                      |                           |                         |             |                 |        |      |
| Central African Republic                                                                                                                                                                                                                                                                                                                                                                                                                                                                                                                                                                                                                                                                                                                                                                                                                                                    | Yellow fever           | Grade 2  | 14-Sep-21            | 1-Apr-2021                | 9-Sep-21                | 1           | 1               | 0      | 0.0% |
| On 3 August 2021, an 18-month-old girl from Mala village in the Kemo district, Central African Republic, tested positive for yellow fever by plaque reduction neutralization test at the Centre Pasteur Cameroun (CPC). She is reportedly not vaccinated against yellow fever. The onset of symptoms was 1 April 2021 with febrile jaundice. Her sample was sent to the CPC for quality control after it tested IgM negative at the Institut Pasteur in Bangui. A thorough investigation is ongoing. Laboratory tests are underway for two additional suspected cases.                                                                                                                                                                                                                                                                                                      |                        |          |                      |                           |                         |             |                 |        |      |
| Chad                                                                                                                                                                                                                                                                                                                                                                                                                                                                                                                                                                                                                                                                                                                                                                                                                                                                        | Floods                 | Ungraded | 6-Oct-21             | 26-Sep-21                 | 17-Nov-21               | 256 329     | -               | 17     | 0.0% |
| The floods since June 2021 has affected about 256 329 people (42 788 households) in 400 villages across 9 regions of Chad (Borkou, Ennedi West, Logone Oriental, Mandoul, Moyen-Chari, Ouaddai, Sila, Lake and Tandjile). As of 28 October 2021, flooding caused significant material and human damage in the Lac province, particularly on the island of Kinassero; 23 households (115 people) were affected, including two children who drowned in Fourkoulom. As of 17 November 2021, a total of 17 people died, and 17 others are missing and 329 people have been injured. Authorities have appealed to partners and to people of goodwill for assistance. Priority needs identified so far are food, shelter, household supplies/kits, livelihood, twelve health facilities need support (drug and medical supplies), water points treatment (wells) and vaccination. |                        |          |                      |                           |                         |             |                 |        |      |
| Chad                                                                                                                                                                                                                                                                                                                                                                                                                                                                                                                                                                                                                                                                                                                                                                                                                                                                        | COVID-19               | Grade 3  | 19-Mar-20            | 19-Mar-20                 | 15-Oct-21               | 5 067       | 5 067           | 174    | 3.4% |
| The first COVID-19 confirmed case was reported in Chad on 19 March 2020. As of 15 October 2021, a total of 5 067 confirmed COVID-19 cases were reported in the country including 174 deaths and 4 874 cases who have recovered.                                                                                                                                                                                                                                                                                                                                                                                                                                                                                                                                                                                                                                             |                        |          |                      |                           |                         |             |                 |        |      |
| Chad                                                                                                                                                                                                                                                                                                                                                                                                                                                                                                                                                                                                                                                                                                                                                                                                                                                                        | Leishmaniasis          | Ungraded | 8-Sep-20             | 16-Oct-20                 | 30-Sep-21               | 156         | 15              | 13     | 8.3% |
| Since 1 January 2018, a total of 156 cases have been reported by 4 provinces (N'Djamena, Borkou, Tibesti and Ouaddai) and 13 deaths (CFR 8.3%). For the year 2020 the country registered 74 cases including 3 deaths. Since the beginning of 2021 up to 30 September 2021, 49 cases have been reported including 7 deaths ( CFR 14.3%) .                                                                                                                                                                                                                                                                                                                                                                                                                                                                                                                                    |                        |          |                      |                           |                         |             |                 |        |      |
| Chad                                                                                                                                                                                                                                                                                                                                                                                                                                                                                                                                                                                                                                                                                                                                                                                                                                                                        | Measles                | Ungraded | 24-May-2018          | 1-Jan-21                  | 17-Oct-21               | 2 334       | 254             | 13     | 0.6% |
| Since 01 January 2021 up to Epi week 42, it has been reported 2 334 suspected cases from 97 out of 129 districts in the country (71% of districts), 527 cases investigated with blood samples recorded, 254 of which were confirmed by IgM, 36 were compatible cases and 13 deaths from 4 districts (CFR 0.6%), 26 districts with confirmed outbreaks since the start of the year. In 2020, Chad reported 8 785 cases, with 363 confirmed cases and 41 deaths.                                                                                                                                                                                                                                                                                                                                                                                                              |                        |          |                      |                           |                         |             |                 |        |      |
| Chad                                                                                                                                                                                                                                                                                                                                                                                                                                                                                                                                                                                                                                                                                                                                                                                                                                                                        | Poliomyelitis (cVDPV2) | Grade 2  | 18-Oct-19            | 9-Sep-19                  | 26-Nov-21               | 114         | 114             | 0      | 0.0% |
| No new cases of circulating vaccine-derived poliovirus type 2 (cVDPV2) were reported in this week. There were 106 cVDPV2 cases reported in 2020 from three different outbreaks. There were 8 cases reported in 2019. The risk of further cVDPV2 spread across the Lake Chad subregion remains high.                                                                                                                                                                                                                                                                                                                                                                                                                                                                                                                                                                         |                        |          |                      |                           |                         |             |                 |        |      |
| Chad                                                                                                                                                                                                                                                                                                                                                                                                                                                                                                                                                                                                                                                                                                                                                                                                                                                                        | Yellow fever           | Grade 2  | 13-Nov-21            | 1-Nov-21                  | 13-Nov-21               | 15          | 2               | 0      | 0.0% |
| On 13 November 2021, the Institut Pasteur de Dakar shared the results of 17 samples of suspected yellow fever cases from the Mandoul district, Chad, of which two tested PCR positive, six were IgM positive with cross-reactions with other flaviviruses, and six other IgM positive without cross-reactions. Plaque reduction neutralisation test is ongoing for the IgM positive cases.                                                                                                                                                                                                                                                                                                                                                                                                                                                                                  |                        |          |                      |                           |                         |             |                 |        |      |
| Comoros                                                                                                                                                                                                                                                                                                                                                                                                                                                                                                                                                                                                                                                                                                                                                                                                                                                                     | COVID-19               | Grade 3  | 30-Apr-2020          | 30-Apr-2020               | 28-Nov-21               | 4 498       | 4 498           | 150    | 3.3% |
| The first case of confirmed COVID-19 was notified on 30 April 2020 in Comoros. As of 28 November 2021, a total of 4 498 confirmed COVID-19 cases, including 150 deaths and 4 284 recoveries were reported in the country.                                                                                                                                                                                                                                                                                                                                                                                                                                                                                                                                                                                                                                                   |                        |          |                      |                           |                         |             |                 |        |      |
| Congo                                                                                                                                                                                                                                                                                                                                                                                                                                                                                                                                                                                                                                                                                                                                                                                                                                                                       | COVID-19               | Grade 3  | 14-Mar-20            | 14-Mar-20                 | 22-Nov-21               | 18 905      | 18 905          | 354    | 1.9% |
| The Government of Congo announced the confirmation of the first case of COVID-19 in Congo on 14 March 2020. As of 28 November 2021, a total of 18 905 cases including 354 deaths and 16 155 recovered cases have been reported in the country.                                                                                                                                                                                                                                                                                                                                                                                                                                                                                                                                                                                                                              |                        |          |                      |                           |                         |             |                 |        |      |
| Congo                                                                                                                                                                                                                                                                                                                                                                                                                                                                                                                                                                                                                                                                                                                                                                                                                                                                       | Poliomyelitis (cVDPV2) | Grade 2  |                      | 29-Jan-21                 | 26-Nov-21               | 4           | 4               | 0      | 0.0% |
| No new cases of circulating vaccine-derived poliovirus type 2 (cVDPV2) were reported this week. So far, 2 cases have been reported in 2021. There were two cases reported in 2020.                                                                                                                                                                                                                                                                                                                                                                                                                                                                                                                                                                                                                                                                                          |                        |          |                      |                           |                         |             |                 |        |      |
| Côte d'Ivoire                                                                                                                                                                                                                                                                                                                                                                                                                                                                                                                                                                                                                                                                                                                                                                                                                                                               | COVID-19               | Grade 3  | 11-Mar-20            | 11-Mar-20                 | 28-Nov-21               | 61 708      | 61 708          | 704    | 1.1% |
| Since 11 March 2020, a total of 61 708 confirmed cases of COVID-19 have been reported from Côte d'Ivoire including 704 deaths, and a total of 60 702 recoveries.                                                                                                                                                                                                                                                                                                                                                                                                                                                                                                                                                                                                                                                                                                            |                        |          |                      |                           |                         |             |                 |        |      |
| Côte d'Ivoire                                                                                                                                                                                                                                                                                                                                                                                                                                                                                                                                                                                                                                                                                                                                                                                                                                                               | Poliomyelitis (cVDPV2) | Grade 2  | 29-Oct-19            | 29-Oct-19                 | 26-Nov-21               | 61          | 61              | 0      | 0.0% |
| No case of circulating vaccine-derived poliovirus type 2 (cVDPV2) was reported this week. The number of 2020 cases remains at 63.                                                                                                                                                                                                                                                                                                                                                                                                                                                                                                                                                                                                                                                                                                                                           |                        |          |                      |                           |                         |             |                 |        |      |
| Côte d'Ivoire                                                                                                                                                                                                                                                                                                                                                                                                                                                                                                                                                                                                                                                                                                                                                                                                                                                               | Yellow fever           | Grade 2  | 14-Sep-21            | 13-Aug-2021               | 6-Sep-21                | 5           | 3               | -      | -    |
| On 13 August 2021, five Yellow fever cases tested positive by plaque reduction neutralization test (PRNT) at Institut Pasteur in Dakar. Based on differential tests returned on 6 September 2021, the results of three cases are consistent with a recent Yellow fever infection. Two other cases had cross-reactions with other flaviviruses, one of which was more consistent with dengue and one with a flavivirus infection (PRNT positive for Yellow fever, Zika, and dengue).                                                                                                                                                                                                                                                                                                                                                                                         |                        |          |                      |                           |                         |             |                 |        |      |

| Country                                                                                                                                                                                                                                                                                                                                                                                                                                                                                                                                                                                                                                                                                                                                                    | Event                  | Grade        | Date notified to WCO | Start of reporting period | End of reporting period | Total cases | Cases Confirmed | Deaths | CFR   |
|------------------------------------------------------------------------------------------------------------------------------------------------------------------------------------------------------------------------------------------------------------------------------------------------------------------------------------------------------------------------------------------------------------------------------------------------------------------------------------------------------------------------------------------------------------------------------------------------------------------------------------------------------------------------------------------------------------------------------------------------------------|------------------------|--------------|----------------------|---------------------------|-------------------------|-------------|-----------------|--------|-------|
| Democratic Republic of the Congo                                                                                                                                                                                                                                                                                                                                                                                                                                                                                                                                                                                                                                                                                                                           | Humanitarian crisis    | Protracted 3 | 20-Dec-2016          | 17-Apr-2017               | 7-Nov-21                | -           | -               | -      | -     |
| As of 7 Nov 2021, there are an estimated 5.7 million people internally displaced and 19.6 million are in need of emergency food assistance in the entire country. On 11 Nov 2021 one of the biggest attacks all year happened in the Kisunga village of North Kivu province causing the death of 35 people and forcing 4K people to displace. Health centre workers were kidnapped and facilities were looted and destroyed depriving nearly 12K of health services. In Ituri another attack occurred on 7 Nov 2021 causing 10 deaths, kidnappings, looting and burning of property. Nearly 25K people have relocated to the Beni territory in North Kivu as a result.                                                                                     |                        |              |                      |                           |                         |             |                 |        |       |
| Democratic Republic of the Congo                                                                                                                                                                                                                                                                                                                                                                                                                                                                                                                                                                                                                                                                                                                           | Cholera                | Grade 3      | 16-Jan-15            | 1-Jan-20                  | 7-Nov-21                | 6 817       | -               | 125    | 1.8%  |
| In 2021, from epidemiological week 1 to 44 (ending 7 November 2021), 6 817 suspected cholera cases including 125 deaths (case-fatality rate 1.8%) were recorded in 80 health zones across 16 provinces of the Democratic Republic of the Congo. In 2020, a total of 30 304 suspected cholera cases including 514 deaths (case fatality 1.7%) were reported in 179 health zones across 23 provinces.                                                                                                                                                                                                                                                                                                                                                        |                        |              |                      |                           |                         |             |                 |        |       |
| Democratic Republic of the Congo                                                                                                                                                                                                                                                                                                                                                                                                                                                                                                                                                                                                                                                                                                                           | COVID-19               | Grade 3      | 10-Mar-20            | 10-Mar-20                 | 25-Nov-21               | 58 235      | 58 233          | 1 107  | 1.9%  |
| Since the start of the COVID-19 outbreak, declared on 10 March 2020, a total of 58 233 confirmed cases and two probable case, including 1 107 deaths have been reported. A total of 51 443 people have recovered.                                                                                                                                                                                                                                                                                                                                                                                                                                                                                                                                          |                        |              |                      |                           |                         |             |                 |        |       |
| Democratic Republic of the Congo                                                                                                                                                                                                                                                                                                                                                                                                                                                                                                                                                                                                                                                                                                                           | Ebola virus disease    | Grade 2      | 8-Oct-21             | 8-Oct-21                  | 6-Nov-21                | 11          | 8               | 9      | 81.8% |
| On 8 October 2021, a case of Ebola virus disease (EVD) was confirmed by PCR in a 29-month-old male child living in the Butsili health area in the Beni health zone, North Kivu province in the Democratic Republic of the Congo. The patient, treated in turn in three health facilities in the Beni health zone since 27 September 2021, died on 6 October 2021 in a local health facility in a hemorrhagic event. This case follows three suspected clustered deaths of EVD in the same family in the Butsili health area on 14, 19 and 29 September 2021 respectively. These three deaths were not sampled or given a dignified and safe burial. By 6 November 2021, 11 cases, of which 8 confirmed and 3 probable, and nine deaths have been reported. |                        |              |                      |                           |                         |             |                 |        |       |
| Democratic Republic of the Congo                                                                                                                                                                                                                                                                                                                                                                                                                                                                                                                                                                                                                                                                                                                           | Measles                | Ungraded     | 12-Oct-21            | 1-Jun-2021                | 17-Oct-21               | 47 844      | 1 193           | 694    | 1.5%  |
| From week 1 through week 41 of 2021 (ending 17 October) 47 844 suspected measles cases and 694 deaths (CFR 1.5%) have been reported. The outbreak has been confirmed in 92 health districts across 23 affected provinces including the capital city of Kinshasa. A total of 1 193 cases are IgM + for measles among which 65% are children under five and 29% known to be vaccinated, half of them have an unknown vaccination status. A total of 436 cases are IgM+ of rubeola among which 5.5% are more than 14 years old.                                                                                                                                                                                                                               |                        |              |                      |                           |                         |             |                 |        |       |
| Democratic Republic of the Congo                                                                                                                                                                                                                                                                                                                                                                                                                                                                                                                                                                                                                                                                                                                           | Meningitis             | Grade 2      | 30-Jul-2021          | 1-Jun-2021                | 31-Oct-21               | 2 558       | 29              | 202    | 7.9%  |
| On 28 July 2021, an alert was reported in the locality of Panga, Banalia territory, in Kisangani district in DRC as a result of an illness with signs similar to those of meningitis. As of 31 October 2021, 2 558 cases have been reported including 202 deaths (CFR= 7.9%). Twenty nine samples have been confirmed on the 181 analysed samples including 27 for Neisseria meningitidis serogroup W, 1 Hemophilus influenzae and 1 Sp)                                                                                                                                                                                                                                                                                                                   |                        |              |                      |                           |                         |             |                 |        |       |
| Democratic Republic of the Congo                                                                                                                                                                                                                                                                                                                                                                                                                                                                                                                                                                                                                                                                                                                           | Monkeypox              | Ungraded     | n/a                  | 1-Jan-20                  | 7-Nov-21                | 9 047       | 39              | 301    | 3.3%  |
| Since epidemiological week 1 up to week 44 in 2021, 2 790 cases have been reported with 72 deaths (CFR 2.5%). Between epidemiological week 1 and week 53 of 2020, a total of 6 257 suspected cases including 229 deaths (CFR 3.7%) were reported in 133 health zones from 17 out of 26 provinces in the country. During the same period in 2019, 5 288 suspected cases and 107 deaths (CFR 2.0%) were reported in 132 health zones from 18 provinces. Overall, there was a regressive trend from epidemiological week 33 to 53 of 2020 (276 cases vs 76 cases).                                                                                                                                                                                            |                        |              |                      |                           |                         |             |                 |        |       |
| Democratic Republic of the Congo                                                                                                                                                                                                                                                                                                                                                                                                                                                                                                                                                                                                                                                                                                                           | Plague                 | Ungraded     | 12-Mar-19            | 1-Jan-20                  | 7-Nov-21                | 582         | -               | 44     | 7.6%  |
| From 22 April 2021, a cluster of deaths due to suspected pneumonic plague were recorded in the health zone of Fataki, Ituri province, Democratic Republic of the Congo. An investigation was conducted during which suspected cases were identified and samples taken for confirmatory testing. From epidemiological week 1 to 44, 2021 (ending on 7 Nov), 121 suspected pneumonic plague cases including 13 deaths were reported in eight health zones in Ituri province. From January to December 2020, 461 suspected plague cases of which 31 deaths were reported in eight health zones of Ituri. The health zones of Biringi, Rethy, and Aru reported the most cases.                                                                                 |                        |              |                      |                           |                         |             |                 |        |       |
| Democratic Republic of the Congo                                                                                                                                                                                                                                                                                                                                                                                                                                                                                                                                                                                                                                                                                                                           | Poliomyelitis (cVDPV2) | Grade 2      | 15-Feb-2018          | 1-Jan-18                  | 26-Nov-21               | 201         | 201             | 0      | 0.0%  |
| No case of circulating vaccine-derived poliovirus type 2 (cVDPV2) was reported this week. There are 11 cases reported in 2021 so far. The total number of 2020 cases remains at 81.                                                                                                                                                                                                                                                                                                                                                                                                                                                                                                                                                                        |                        |              |                      |                           |                         |             |                 |        |       |
| Democratic Republic of the Congo                                                                                                                                                                                                                                                                                                                                                                                                                                                                                                                                                                                                                                                                                                                           | Typhoid fever          | Ungraded     | 1-Jul-2021           | 1-Jan-21                  | 3-Oct-21                | 1 121 104   | 19 734          | 411    | 0.0%  |
| In 2021, from Epi week 1 to 39, 1 121 104 suspected cases of typhoid fever have been reported including 411 deaths (CFR 0.0%) and 19 734 confirmed cases in the epi week 39. In 2020, a total of 715 920 suspected cases of typhoid fever were reported, including 178 deaths (CFR 0.0%).                                                                                                                                                                                                                                                                                                                                                                                                                                                                  |                        |              |                      |                           |                         |             |                 |        |       |

| Country                                                                                                                                                                                                                                                                                                                                                                                                                                                                                                                                                                                                                                                                                                                                                                                             | Event                                    | Grade    | Date notified to WCO | Start of reporting period | End of reporting period | Total cases | Cases Confirmed | Deaths | CFR  |
|-----------------------------------------------------------------------------------------------------------------------------------------------------------------------------------------------------------------------------------------------------------------------------------------------------------------------------------------------------------------------------------------------------------------------------------------------------------------------------------------------------------------------------------------------------------------------------------------------------------------------------------------------------------------------------------------------------------------------------------------------------------------------------------------------------|------------------------------------------|----------|----------------------|---------------------------|-------------------------|-------------|-----------------|--------|------|
| Democratic Republic of the Congo                                                                                                                                                                                                                                                                                                                                                                                                                                                                                                                                                                                                                                                                                                                                                                    | Yellow Fever                             | Grade 2  | 21-Apr-2021          | 21-Apr-2021               | 18-Jul-2021             | 2           | 2               | 0      | 0.0% |
| On 18 July 2021, two yellow fever cases tested positive by Plaque Reduction Neutralization Test (PRNT) at Centre Pasteur in Cameroon (CPC). The first case is a 34-year-old male from the Abuzi health zone, North Ubangi province, Democratic Republic of the Congo whose date of symptom onset was 20 February 2021 with fever, vomiting, abdominal pain, back pain and physical asthenia. Jaundice appeared on 25 February. The second case is a 47-year-old female unvaccinated against yellow fever from Ango health zone, Bas Uele province. He first exhibited symptoms on 7 May 2021. In addition, confirmatory results are pending for three other presumptive positive cases from Equateur, Kinshasa and North Ubangi provinces.                                                          |                                          |          |                      |                           |                         |             |                 |        |      |
| Equatorial Guinea                                                                                                                                                                                                                                                                                                                                                                                                                                                                                                                                                                                                                                                                                                                                                                                   | COVID-19                                 | Grade 3  | 14-Mar-20            | 14-Mar-20                 | 25-Nov-21               | 13 579      | 13 579          | 173    | 1.3% |
| The Ministry of Health and Welfare announced the first confirmed COVID-19 case on 14 March 2020. As of 25 November 2021, a total of 13 579 cases have been reported in the country with 173 deaths and 13 323 recoveries.                                                                                                                                                                                                                                                                                                                                                                                                                                                                                                                                                                           |                                          |          |                      |                           |                         |             |                 |        |      |
| Eritrea                                                                                                                                                                                                                                                                                                                                                                                                                                                                                                                                                                                                                                                                                                                                                                                             | COVID-19                                 | Grade 3  | 21-Mar-20            | 21-Mar-20                 | 28-Nov-21               | 7 318       | 7 318           | 60     | 0.8% |
| The first COVID-19 confirmed case was reported in Eritrea on 21 March 2020. As of 28 November 2021, a total of 7 318 confirmed COVID-19 cases with 60 deaths were reported in the country. A total of 7 084 patients have recovered from the disease.                                                                                                                                                                                                                                                                                                                                                                                                                                                                                                                                               |                                          |          |                      |                           |                         |             |                 |        |      |
| Eswatini                                                                                                                                                                                                                                                                                                                                                                                                                                                                                                                                                                                                                                                                                                                                                                                            | COVID-19                                 | Grade 3  | 13-Mar-20            | 13-Mar-20                 | 28-Nov-21               | 46 487      | 46 487          | 1 248  | 2.7% |
| The first case of COVID-19 was confirmed in the kingdom of Eswatini on 13 March 2020. As of 28 November 2021, a total of 46 538 cases have been reported in the country including 45 241 recoveries. A total of 1 248 associated deaths have been reported.                                                                                                                                                                                                                                                                                                                                                                                                                                                                                                                                         |                                          |          |                      |                           |                         |             |                 |        |      |
| Ethiopia                                                                                                                                                                                                                                                                                                                                                                                                                                                                                                                                                                                                                                                                                                                                                                                            | Humanitarian crisis (Conflict in Tigray) | Grade 3  | 4-Nov-20             | 4-Nov-20                  | 25-Nov-21               | -           | -               | -      | -    |
| The security situation in the country remains volatile, affecting civilians and limiting humanitarian aid deliverance. Adequate communication, electricity, and banking services remain intermittent. The conflict in the Tigray area has been spilling over into the Afar and Amhara regions for some time but continued in recent weeks with a large displacement of people from the South and North Wello Zones causing massive displacement of people who are living among the host community and others living in crowded centers, including schools. Due to the ongoing conflict in the Amhara region, more than 500 health facilities are unfunctional. Access to the area still remains a challenge, but humanitarian flights operated by the UN have resumed to Mekelle as of 24 Nov 2021. |                                          |          |                      |                           |                         |             |                 |        |      |
| Ethiopia                                                                                                                                                                                                                                                                                                                                                                                                                                                                                                                                                                                                                                                                                                                                                                                            | Cholera                                  | Ungraded | 31-Aug-2021          | 31-Aug-2021               | 23-Nov-21               | 383         | 2               | 6      | 1.6% |
| The outbreak of cholera is ongoing in Oromia and Somali regions. The first case was reported on 31 August 2021. As of 23 November 2021, a total of 383 cases with 6 associated death (CFR 1.6%), are reported so far. Five sample were tested and two were positive for cholera. Response activities are ongoing including outbreak investigation, case management, cholera supplies delivery.                                                                                                                                                                                                                                                                                                                                                                                                      |                                          |          |                      |                           |                         |             |                 |        |      |
| Ethiopia                                                                                                                                                                                                                                                                                                                                                                                                                                                                                                                                                                                                                                                                                                                                                                                            | COVID-19                                 | Grade 3  | 13-Mar-20            | 13-Mar-20                 | 28-Nov-21               | 371 262     | 371 262         | 6 740  | 1.8% |
| Since the confirmation of the first case on 13 March 2020, Ethiopia has confirmed a total of 371 262 cases of COVID-19 as of 28 November 2021, with 6 740 deaths and 348 799 recoveries.                                                                                                                                                                                                                                                                                                                                                                                                                                                                                                                                                                                                            |                                          |          |                      |                           |                         |             |                 |        |      |
| Ethiopia                                                                                                                                                                                                                                                                                                                                                                                                                                                                                                                                                                                                                                                                                                                                                                                            | Measles                                  | Ungraded | 14-Jan-17            | 1-Jan-21                  | 19-Nov-21               | 2 703       | 1 418           | 4      | 0.1% |
| In 2021, as of 19 November (Epi week 47), a total of 2 703 cases have been reported of which 1 418 have been confirmed (965 epi-link, 408 IgM and 45 measles compatible) and 4 deaths recorded (CFR 0.1%). Out of the 2 703 suspected cases, 1 365 were under 5 years of age, 888 were between 5 and 14 years of age and 449 were over 15 years of age.                                                                                                                                                                                                                                                                                                                                                                                                                                             |                                          |          |                      |                           |                         |             |                 |        |      |
| Ethiopia                                                                                                                                                                                                                                                                                                                                                                                                                                                                                                                                                                                                                                                                                                                                                                                            | Poliomyelitis (cVDPV2)                   | Grade 2  | 24-Jun-2019          | 20-May-2019               | 26-Nov-21               | 74          | 74              | 0      | 0.0% |
| No case of circulating vaccine-derived poliovirus type 2 (cVDPV2) was reported this week. Nine cases have been reported so far in 2021. The total number of cases for 2020 is 38 and 2019 is 15.                                                                                                                                                                                                                                                                                                                                                                                                                                                                                                                                                                                                    |                                          |          |                      |                           |                         |             |                 |        |      |
| Gabon                                                                                                                                                                                                                                                                                                                                                                                                                                                                                                                                                                                                                                                                                                                                                                                               | COVID-19                                 | Grade 3  | 12-Mar-20            | 12-Mar-20                 | 25-Nov-21               | 37 298      | 37 298          | 279    | 0.7% |
| On 12 March 2020, the Ministry of Health announced the confirmation of the first COVID-19 case in the country. As of 25 November 2021, a total of 37 298 cases including 279 deaths and 32 019 recoveries have been reported in the country.                                                                                                                                                                                                                                                                                                                                                                                                                                                                                                                                                        |                                          |          |                      |                           |                         |             |                 |        |      |
| Gambia                                                                                                                                                                                                                                                                                                                                                                                                                                                                                                                                                                                                                                                                                                                                                                                              | COVID-19                                 | Grade 3  | 17-Mar-20            | 17-Mar-20                 | 21-Nov-21               | 9 989       | 9 989           | 342    | 3.4% |
| The first COVID-19 confirmed case was reported in the Gambia on 17 March 2020. As of 21 November 2021, a total of 9 989 confirmed COVID-19 cases including 342 deaths, and 9 638 recoveries have been reported in the country.                                                                                                                                                                                                                                                                                                                                                                                                                                                                                                                                                                      |                                          |          |                      |                           |                         |             |                 |        |      |
| Ghana                                                                                                                                                                                                                                                                                                                                                                                                                                                                                                                                                                                                                                                                                                                                                                                               | COVID-19                                 | Grade 3  | 12-Mar-20            | 12-Mar-20                 | 20-Nov-21               | 130 920     | 130 920         | 1 209  | 0.9% |
| As of 13 November 2021, a total of 130 920 confirmed COVID-19 cases have been reported in Ghana. There have been 1209 deaths and 129 042 recoveries reported.                                                                                                                                                                                                                                                                                                                                                                                                                                                                                                                                                                                                                                       |                                          |          |                      |                           |                         |             |                 |        |      |
| Ghana                                                                                                                                                                                                                                                                                                                                                                                                                                                                                                                                                                                                                                                                                                                                                                                               | Meningitis                               | Ungraded | 1-Jan-21             | 1-Jan-21                  | 25-Oct-21               | 316         | -               | 4      | 1.3% |
| Since the beginning of the year 2021 until Week 43, 316 cases of meningitis have been reported with 4 deaths (CFR of 1.3%). The Nandom district in the Upper West Region crossed the epidemic threshold and four other districts are on alert (Lawra, Lambussie, Nadowli-Kaleo, Wa Municipal). In Ghana, the Streptococcus pneumoniae is the germ mostly identified by the country laboratory.                                                                                                                                                                                                                                                                                                                                                                                                      |                                          |          |                      |                           |                         |             |                 |        |      |
| Ghana                                                                                                                                                                                                                                                                                                                                                                                                                                                                                                                                                                                                                                                                                                                                                                                               | Poliomyelitis (cVDPV2)                   | Grade 2  | 9-Jul-2019           | 8-Jul-2019                | 26-Nov-21               | 31          | 31              | 0      | 0.0% |
| No new cases of circulating vaccine-derived poliovirus type 2 (cVDPV2) reported this week. There were 12 cases reported in 2020, while the total number of 2019 cases remain 19. One cVDPV2 positive environmental sample was reported in the Eastern province.                                                                                                                                                                                                                                                                                                                                                                                                                                                                                                                                     |                                          |          |                      |                           |                         |             |                 |        |      |



| Country                                                                                                                                                                                                                                                                                                                                                                                                                                                                                                                                                                                                                                               | Event                  | Grade    | Date notified to WCO | Start of reporting period | End of reporting period | Total cases | Cases Confirmed | Deaths | CFR   |
|-------------------------------------------------------------------------------------------------------------------------------------------------------------------------------------------------------------------------------------------------------------------------------------------------------------------------------------------------------------------------------------------------------------------------------------------------------------------------------------------------------------------------------------------------------------------------------------------------------------------------------------------------------|------------------------|----------|----------------------|---------------------------|-------------------------|-------------|-----------------|--------|-------|
| Ghana                                                                                                                                                                                                                                                                                                                                                                                                                                                                                                                                                                                                                                                 | Yellow fever           | Grade 2  | 3-Nov-21             | 15-Oct-21                 | 3-Nov-21                | 42          | 3               | 11     | 26.2% |
| From 15 October 2021 to 3 November 2021, a total of 42 suspected cases of yellow fever were reported mostly among nomadic settlers from 14 communities in two districts (West Gonja and North Gonja) in Savannah Region, northwest Ghana (bordering Côte d'Ivoire). Eleven out of the 42 suspected cases, including all the three PCR positive cases died, case fatality rate (CFR) 36%. Three blood samples collected from suspected cases tested YF PCR positive at Noguchi Memorial Institute for Medical Research (NMIMR) and six additional samples tested YF IgM positive by ELISA at the National Public Health and Reference Laboratory.      |                        |          |                      |                           |                         |             |                 |        |       |
| Guinea                                                                                                                                                                                                                                                                                                                                                                                                                                                                                                                                                                                                                                                | COVID-19               | Grade 3  | 13-Mar-20            | 13-Mar-20                 | 28-Nov-21               | 30 770      | 30 770          | 509    | 1.7%  |
| The Ministry of Health in Guinea announced the first confirmed case of COVID-19 on 13 March 2020. As of 28 November 2021, a total of 30 770 cases including 29 725 recovered cases and 509 deaths have been reported in the country.                                                                                                                                                                                                                                                                                                                                                                                                                  |                        |          |                      |                           |                         |             |                 |        |       |
| Guinea                                                                                                                                                                                                                                                                                                                                                                                                                                                                                                                                                                                                                                                | Lassa Fever            | Ungraded | 8-May-2021           | 8-May-2021                | 21-Oct-21               | 8           | 8               | 7      | 87.5% |
| To date, there have been a total of 8 confirmed cases and 7 deaths (CFR 87.5%): the first case (23 years old man, resident of Yomou prefecture) was notified on 8 May 2021. The patient was also confirmed to be positive for COVID-19 and later died. Contact tracing of 88 people was done, and no secondary cases found. However, the prefecture of Bheeta is regarded as active, with the prefectures of Yomou-Centre, Péla, Yomou and Bignamou on alert. More cases have been reported with the recent case, a 9 years old female from Faranah health district confirmed on 19 September 2021 by the Gueckerou laboratory and died the same day. |                        |          |                      |                           |                         |             |                 |        |       |
| Guinea                                                                                                                                                                                                                                                                                                                                                                                                                                                                                                                                                                                                                                                | Measles                | Ungraded | 09-May-2018          | 1-Jan-21                  | 3-Nov-21                | 553         | 271             | 5      | 0.9%  |
| In 2021, as of Epi week 43, 553 suspected cases have been reported, 392 samples taken, 353 samples tested of which 271 tested positive; 5 deaths have been reported. Out of the 271 positive persons, 11 (6%) were vaccinated. In 2020 at the same epi week, 6070 suspected cases, 870 cases sampled, 767 samples tested of which 524 positive, 269 negative and 48 undetermined; 15 deaths have been reported. Since 2020, a total of 6 623 suspected cases, 1 120 tests analysed, 1 141 confirmed cases, 19 deaths have been reported.                                                                                                              |                        |          |                      |                           |                         |             |                 |        |       |
| Guinea                                                                                                                                                                                                                                                                                                                                                                                                                                                                                                                                                                                                                                                | Poliomyelitis (cVDPV2) | Grade 2  | 22-Jul-2020          | 22-Jul-2020               | 20-Nov-21               | 50          | 50              | 0      | 0.0%  |
| No new cases of circulating vaccine-derived poliovirus type 2 (cVDPV2) were reported this week. So far, we have 6 cases in 2021. The total number of 2020 cases has been corrected to 44.                                                                                                                                                                                                                                                                                                                                                                                                                                                             |                        |          |                      |                           |                         |             |                 |        |       |
| Guinea-Bissau                                                                                                                                                                                                                                                                                                                                                                                                                                                                                                                                                                                                                                         | COVID-19               | Grade 3  | 25-Mar-20            | 25-Mar-20                 | 27-Nov-21               | 6 440       | 6 440           | 148    | 2.3%  |
| On 25 March 2020, the Ministry of Health of Guinea Bissau reported the first COVID-19 confirmed case in the country. As of 27 November 2021, the country has reported 6 440 confirmed cases of COVID-19 with 6 268 recoveries and 148 deaths.                                                                                                                                                                                                                                                                                                                                                                                                         |                        |          |                      |                           |                         |             |                 |        |       |
| Guinea-Bissau                                                                                                                                                                                                                                                                                                                                                                                                                                                                                                                                                                                                                                         | Poliomyelitis (cVDPV2) | Grade 2  | 9-Nov-21             | 9-Nov-21                  | 26-Nov-21               | 4           | 4               | 0      | 0.0%  |
| No case of circulating vaccine-derived poliovirus type 2 (cVDPV2) was reported this week. There are 3 cases in the country which are linked to the Jigawa outbreak in Nigeria.                                                                                                                                                                                                                                                                                                                                                                                                                                                                        |                        |          |                      |                           |                         |             |                 |        |       |
| Kenya                                                                                                                                                                                                                                                                                                                                                                                                                                                                                                                                                                                                                                                 | COVID-19               | Grade 3  | 13-Mar-20            | 13-Mar-20                 | 28-Nov-21               | 254 951     | 254 951         | 5 333  | 2.1%  |
| On 12 March 2020, the Ministry of Health announced the confirmation of one new COVID-19 case in the country. As of 28 November 2021, 254 951 confirmed COVID-19 cases including 5 333 deaths and 248 131 recoveries have been reported in the country.                                                                                                                                                                                                                                                                                                                                                                                                |                        |          |                      |                           |                         |             |                 |        |       |
| Kenya                                                                                                                                                                                                                                                                                                                                                                                                                                                                                                                                                                                                                                                 | Dengue                 | Ungraded | 27-Apr-2021          | 1-Jan-21                  | 26-Aug-2021             | 976         | 36              | 2      | 0.2%  |
| The outbreak has been reported in Mombasa and Mandera Counties, recording 976 cases with 36 confirmed and 2 deaths reported (CFR 0.2%).                                                                                                                                                                                                                                                                                                                                                                                                                                                                                                               |                        |          |                      |                           |                         |             |                 |        |       |
| Kenya                                                                                                                                                                                                                                                                                                                                                                                                                                                                                                                                                                                                                                                 | Leishmaniasis          | Ungraded | 31-Mar-19            | 3-Jan-20                  | 11-Nov-21               | 1 298       | 1 120           | 10     | 0.8%  |
| Since January 2020, a total of 1 298 visceral leishmaniasis confirmed cases with 10 deaths (CFR 0.9%), have been reported in eight counties namely: Marsabit, Garissa, Kitui, Baringo, West Pokot, Mandera, Wajir, and Tharaka Nithi. The outbreak is active in four counties; Kitui, Tharaka Nithi, West Pokot, and Wajir. 15 new cases were recorded during week 43.                                                                                                                                                                                                                                                                                |                        |          |                      |                           |                         |             |                 |        |       |
| Kenya                                                                                                                                                                                                                                                                                                                                                                                                                                                                                                                                                                                                                                                 | Measles                | Ungraded | 6-May-2019           | 20-Oct-19                 | 4-Nov-21                | 680         | 30              | 1      | 0.1%  |
| Since October 2019 through 04 November 2021 (Epi week 44), a total of 680 measles cases were reported of which 30 were confirmed and one death (CFR 0.1%) were reported. Currently, the counties of Garissa and West Pokot have active outbreaks.                                                                                                                                                                                                                                                                                                                                                                                                     |                        |          |                      |                           |                         |             |                 |        |       |
| Kenya                                                                                                                                                                                                                                                                                                                                                                                                                                                                                                                                                                                                                                                 | Poliomyelitis (cVDPV2) | Grade 2  | 5-Feb-2021           | 10-Feb-2021               | 26-Nov-21               | 3           | 3               | 0      | 0.0%  |
| No cVDPV2 positive environmental sample was reported this week. There was one cVDPV2 positive environmental sample reported in 2020 and one in 2021. The virus is linked to the Banadir outbreak in Somalia.                                                                                                                                                                                                                                                                                                                                                                                                                                          |                        |          |                      |                           |                         |             |                 |        |       |
| Lesotho                                                                                                                                                                                                                                                                                                                                                                                                                                                                                                                                                                                                                                               | COVID-19               | Grade 3  | 13-May-2020          | 13-May-2020               | 25-Nov-21               | 21 755      | 21 755          | 662    | 3.0%  |
| Since the first confirmed COVID-19 case was reported in Lesotho on 13 May 2020, until 25 November 2021, a total of 21 755 cases of COVID-19 have been reported, including 13 657 recoveries and 662 deaths.                                                                                                                                                                                                                                                                                                                                                                                                                                           |                        |          |                      |                           |                         |             |                 |        |       |
| Liberia                                                                                                                                                                                                                                                                                                                                                                                                                                                                                                                                                                                                                                               | COVID-19               | Grade 3  | 16-Mar-20            | 16-Mar-20                 | 25-Nov-21               | 5 823       | 5 823           | 287    | 4.9%  |
| From 16 March 2020 to 25 November 2021, Liberia has recorded a total of 5 823 cases including 287 deaths and 5 531 recoveries have been reported.                                                                                                                                                                                                                                                                                                                                                                                                                                                                                                     |                        |          |                      |                           |                         |             |                 |        |       |
| Liberia                                                                                                                                                                                                                                                                                                                                                                                                                                                                                                                                                                                                                                               | Lassa fever            | Ungraded | 23-Jul-2021          | 1-Jan-21                  | 21-Nov-21               | 24          | 24              | 15     | 62.5% |
| The numbers of confirmed and death cases have been reviewed. From January 2021 to 21 November 2021, a total of 136 suspected cases were reported, of which 24 (17.6%) were confirmed, and 15 deaths (CFR 62.5%) among the confirmed cases. Three counties are currently in outbreak: Bong, Grand Bassa and Montserrado counties                                                                                                                                                                                                                                                                                                                       |                        |          |                      |                           |                         |             |                 |        |       |
| Liberia                                                                                                                                                                                                                                                                                                                                                                                                                                                                                                                                                                                                                                               | Measles                | Ungraded | 24-Sep-17            | 1-Jan-19                  | 23-Oct-21               | 410         | 191             | 0      | 0.0%  |
| In week 42 (week ending 23 July 2021), 15 suspected cases were reported from Nimba (4), Montserrado (3), Grand Gedeh (2), Bomi (2), Grand Bassa (1), Maryland (1), Rivercess (1), and Sinoe (1) Counties. Among the 15 suspected cases, 8 cases are <5 years (83%) and 7 case are >5 years (17%). Since the beginning of 2021, 410 total cases were reported of which 191 were confirmed (54 laboratory-confirmed, 127 clinically confirmed and 10 epi-linked), 217 negative.                                                                                                                                                                         |                        |          |                      |                           |                         |             |                 |        |       |

| Country                                                                                                                                                                                                                                                                                                                                                                                                                                                                                                                                                                                                                                                                                                                                                                                                                                                                                                                                                                                                                                               | Event                               | Grade        | Date notified to WCO | Start of reporting period | End of reporting period | Total cases | Cases Confirmed | Deaths | CFR   |
|-------------------------------------------------------------------------------------------------------------------------------------------------------------------------------------------------------------------------------------------------------------------------------------------------------------------------------------------------------------------------------------------------------------------------------------------------------------------------------------------------------------------------------------------------------------------------------------------------------------------------------------------------------------------------------------------------------------------------------------------------------------------------------------------------------------------------------------------------------------------------------------------------------------------------------------------------------------------------------------------------------------------------------------------------------|-------------------------------------|--------------|----------------------|---------------------------|-------------------------|-------------|-----------------|--------|-------|
| Liberia                                                                                                                                                                                                                                                                                                                                                                                                                                                                                                                                                                                                                                                                                                                                                                                                                                                                                                                                                                                                                                               | Poliomyelitis (cVDPV2)              | Grade 2      | 10-Dec-2020          | 17-Dec-2020               | 26-Nov-21               | 3           | 3               | 0      | 0.0%  |
| No case of circulating vaccine-derived poliovirus type 2 (cVDPV2) was reported this week. The country has reported 3 cases.                                                                                                                                                                                                                                                                                                                                                                                                                                                                                                                                                                                                                                                                                                                                                                                                                                                                                                                           |                                     |              |                      |                           |                         |             |                 |        |       |
| Madagascar                                                                                                                                                                                                                                                                                                                                                                                                                                                                                                                                                                                                                                                                                                                                                                                                                                                                                                                                                                                                                                            | Malnutrition crisis                 | Grade 2      | 1-Jul-2021           | 1-Jan-21                  | 9-Sep-21                | -           | -               | -      | -     |
| A prolonged three-year drought in southern Madagascar has contributed to food insecurity issues for an estimated 1.3 million people in the Grand Sud area, of which 14K people were classified as IPC Phase 5 or catastrophically food insecure. About 390K children are expected to have moderate acute malnutrition and 111K children to have severe acute malnutrition from May 2021 to April 2022 if no intervention measures are taken. All 10 districts of Grand Sud have been affected with the epicentre of the crisis occurring in Amboasary Atsimo district.                                                                                                                                                                                                                                                                                                                                                                                                                                                                                |                                     |              |                      |                           |                         |             |                 |        |       |
| Madagascar                                                                                                                                                                                                                                                                                                                                                                                                                                                                                                                                                                                                                                                                                                                                                                                                                                                                                                                                                                                                                                            | COVID-19                            | Grade 3      | 20-Mar-20            | 20-Mar-20                 | 19-Nov-21               | 44 072      | 44 072          | 967    | 2.2%  |
| Madagascar Ministry of Health announced the confirmation of the first COVID-19 case on 20 March 2020. As of 19 November 2021, a total of 44 072 cases have been reported in the country, out of which 42 802 have recovered and 967 deaths reported.                                                                                                                                                                                                                                                                                                                                                                                                                                                                                                                                                                                                                                                                                                                                                                                                  |                                     |              |                      |                           |                         |             |                 |        |       |
| Madagascar                                                                                                                                                                                                                                                                                                                                                                                                                                                                                                                                                                                                                                                                                                                                                                                                                                                                                                                                                                                                                                            | Malaria                             | Ungraded     | 8-Mar-21             | 1-Jan-21                  | 7-Nov-21                | 1 546 949   | -               | 686    | 0.0%  |
| From January 2021 to 19 September 2021, 1 439 687 cases were reported including 686 deaths. The number of malaria cases reported in week 37 was 6 951 cases. A decrease in the number of malaria cases has been observed from week 21.                                                                                                                                                                                                                                                                                                                                                                                                                                                                                                                                                                                                                                                                                                                                                                                                                |                                     |              |                      |                           |                         |             |                 |        |       |
| Madagascar                                                                                                                                                                                                                                                                                                                                                                                                                                                                                                                                                                                                                                                                                                                                                                                                                                                                                                                                                                                                                                            | Pneumonic Plague                    | Grade 1      | 29-Aug-2021          | 1-Sep-21                  | 7-Nov-21                | 41          | 19              | 6      | 14.6% |
| On 29 August 2021, in the Itasy region, in the Arivonimamo health district, an alert was received by the health authorities regarding cases of Pulmonary Plague. As of 7 November 2021, a total of 41 suspected cases of pneumonic plague including 19 confirmed and 6 death cases (CFR 14.6%) are reported so far. The number of cases and deaths on this outbreak have been updated by the MoH.                                                                                                                                                                                                                                                                                                                                                                                                                                                                                                                                                                                                                                                     |                                     |              |                      |                           |                         |             |                 |        |       |
| Madagascar                                                                                                                                                                                                                                                                                                                                                                                                                                                                                                                                                                                                                                                                                                                                                                                                                                                                                                                                                                                                                                            | Poliomyelitis (cVDPV1)              | Grade 2      | 28-Apr-2021          | 28-Apr-2021               | 26-Nov-21               | 12          | 12              | 0      | 0.0%  |
| No case of circulating vaccine-derived poliovirus type 1 (cVDPV1) was reported this week. The number of 2021 cases remains at 10. There were two cases reported in 2020. There were two cases reported in 2020.                                                                                                                                                                                                                                                                                                                                                                                                                                                                                                                                                                                                                                                                                                                                                                                                                                       |                                     |              |                      |                           |                         |             |                 |        |       |
| Malawi                                                                                                                                                                                                                                                                                                                                                                                                                                                                                                                                                                                                                                                                                                                                                                                                                                                                                                                                                                                                                                                | COVID-19                            | Grade 3      | 2-Apr-2020           | 2-Apr-2020                | 28-Nov-21               | 61 897      | 61 897          | 2 305  | 3.7%  |
| On 2 April 2020, the president of Malawi announced the first confirmed cases of COVID-19 in the country. As of 28 November 2021, the country has a total of 61 897 confirmed cases with 2 305 deaths and 58 765 recoveries.                                                                                                                                                                                                                                                                                                                                                                                                                                                                                                                                                                                                                                                                                                                                                                                                                           |                                     |              |                      |                           |                         |             |                 |        |       |
| Mali                                                                                                                                                                                                                                                                                                                                                                                                                                                                                                                                                                                                                                                                                                                                                                                                                                                                                                                                                                                                                                                  | Humanitarian crisis                 | Protracted 1 | n/a                  | n/a                       | 31-Oct-21               | -           | -               | -      | -     |
| There have been 402K IDPs in the country and more than 156 700 refugees as of 31 October 2021. However, 85 939 returnees have come back to the country. The situation in northern and central regions of the country remains unstable, marked by an increase in direct or indirect attacks against national and international armed forces and the civilian population. Issues such as inter and intra-community conflicts, activism of non-state armed groups, consequences of counter-insurgency operations, crime and banditry continue to weaken the Malian context. COVID-19 also continues to compound the health impacts affecting all basic social sectors as well as the protection of household livelihoods. Due to the humanitarian crisis, 5% of health facilities are not fully functional with a limited presence of partners working in the management of primary health care in the northern and central regions. Since the beginning of 2021, 8 attacks on the health system have been reported by the northern and central regions. |                                     |              |                      |                           |                         |             |                 |        |       |
| Mali                                                                                                                                                                                                                                                                                                                                                                                                                                                                                                                                                                                                                                                                                                                                                                                                                                                                                                                                                                                                                                                  | COVID-19                            | Grade 3      | 25-Mar-20            | 25-Mar-20                 | 28-Nov-21               | 17 339      | 17 339          | 605    | 3.5%  |
| On 25 March 2020, the Ministry of Health of Mali reported the first COVID-19 confirmed cases in the country. As of 28 November 2021, a total of 17 339 confirmed COVID-19 cases have been reported in the country including 605 deaths and 15 128 recoveries.                                                                                                                                                                                                                                                                                                                                                                                                                                                                                                                                                                                                                                                                                                                                                                                         |                                     |              |                      |                           |                         |             |                 |        |       |
| Mali                                                                                                                                                                                                                                                                                                                                                                                                                                                                                                                                                                                                                                                                                                                                                                                                                                                                                                                                                                                                                                                  | Measles                             | Ungraded     | 20-Feb-2018          | 1-Jan-21                  | 7-Nov-21                | 1 466       | 792             | 2      | 0.1%  |
| From January 2021 up to Epi week 44 (ending the 07 November 2021), Mali has reported a total of 1 466 suspected cases including two deaths, 1 322 samples tested of which 792 were positive, 491 negative and 39 undetermined. There is an increase of 100 % of confirmed cases compared to the same week last year.                                                                                                                                                                                                                                                                                                                                                                                                                                                                                                                                                                                                                                                                                                                                  |                                     |              |                      |                           |                         |             |                 |        |       |
| Mali                                                                                                                                                                                                                                                                                                                                                                                                                                                                                                                                                                                                                                                                                                                                                                                                                                                                                                                                                                                                                                                  | Poliomyelitis (cVDPV2)              | Grade 2      | 18-Aug-2020          | 18-Aug-2020               | 26-Nov-21               | 52          | 52              | 0      | 0.0%  |
| No case of circulating vaccine-derived poliovirus type 1 (cVDPV1) was reported this week. The total number of cases since 2020 to 52.                                                                                                                                                                                                                                                                                                                                                                                                                                                                                                                                                                                                                                                                                                                                                                                                                                                                                                                 |                                     |              |                      |                           |                         |             |                 |        |       |
| Mauritania                                                                                                                                                                                                                                                                                                                                                                                                                                                                                                                                                                                                                                                                                                                                                                                                                                                                                                                                                                                                                                            | COVID-19                            | Grade 3      | 13-Mar-20            | 13-Mar-20                 | 28-Nov-21               | 39 178      | 39 178          | 831    | 2.1%  |
| The government of Mauritania announced its first confirmed COVID-19 case on 13 March 2020. As of 28 November 2021, a total of 39 178 cases including 831 deaths and 37 380 recovered cases have been reported in the country.                                                                                                                                                                                                                                                                                                                                                                                                                                                                                                                                                                                                                                                                                                                                                                                                                         |                                     |              |                      |                           |                         |             |                 |        |       |
| Mauritius                                                                                                                                                                                                                                                                                                                                                                                                                                                                                                                                                                                                                                                                                                                                                                                                                                                                                                                                                                                                                                             | COVID-19                            | Grade 3      | 18-Mar-20            | 18-Mar-20                 | 8-Nov-21                | 18 979      | 18 970          | 240    | 1.3%  |
| The Republic of Mauritius announced the first three positive cases of COVID-19 on 18 March 2020. As of 08 November 2021, a total of 18 979 confirmed COVID-19 cases including 240 deaths and 17 465 recovered cases have been reported in the country.                                                                                                                                                                                                                                                                                                                                                                                                                                                                                                                                                                                                                                                                                                                                                                                                |                                     |              |                      |                           |                         |             |                 |        |       |
| Mozambique                                                                                                                                                                                                                                                                                                                                                                                                                                                                                                                                                                                                                                                                                                                                                                                                                                                                                                                                                                                                                                            | Humanitarian crisis in Cabo Delgado | Protracted 2 | 1-Jan-20             | 1-Jan-20                  | 23-Nov-21               | -           | -               | -      | -     |
| The safety situation in Cabo Delgado remains unpredictable and volatile. From 17-23 November 2021, a total of 1 934 internally displaced person (IDPs) arrived mostly in Mueda, Nangade, and Ancuabe. As of 31 Oct 2021, the nation-wide estimate of people in need of humanitarian assistance is 1.3 million and there are 744 949 people displaced by conflict and 116 385 displaced by disaster. Of those fleeing due to conflict, most have left because of violence perpetrated by NSAGs.                                                                                                                                                                                                                                                                                                                                                                                                                                                                                                                                                        |                                     |              |                      |                           |                         |             |                 |        |       |
| Mozambique                                                                                                                                                                                                                                                                                                                                                                                                                                                                                                                                                                                                                                                                                                                                                                                                                                                                                                                                                                                                                                            | Cholera                             | Ungraded     | 28-Sep-21            | 21-Jul-2021               | 19-Oct-21               | 191         | 8               | 0      | 0.0%  |
| On 28 September 2021, the WHO was notified about a Cholera outbreak in some communities of Caia District. By 19 October 2021, 191 cases were recorded with no deaths. Eight cases were confirmed (7 by RDT and 1 by culture).                                                                                                                                                                                                                                                                                                                                                                                                                                                                                                                                                                                                                                                                                                                                                                                                                         |                                     |              |                      |                           |                         |             |                 |        |       |

| Country                                                                                                                                                                                                                                                                                                                                                                                                                                                                                                                                                                                                                                                                                                                                                                                                                                                                                                                                                                                                                                | Event                  | Grade        | Date notified to WCO | Start of reporting period | End of reporting period | Total cases | Cases Confirmed | Deaths | CFR  |
|----------------------------------------------------------------------------------------------------------------------------------------------------------------------------------------------------------------------------------------------------------------------------------------------------------------------------------------------------------------------------------------------------------------------------------------------------------------------------------------------------------------------------------------------------------------------------------------------------------------------------------------------------------------------------------------------------------------------------------------------------------------------------------------------------------------------------------------------------------------------------------------------------------------------------------------------------------------------------------------------------------------------------------------|------------------------|--------------|----------------------|---------------------------|-------------------------|-------------|-----------------|--------|------|
| Mozambique                                                                                                                                                                                                                                                                                                                                                                                                                                                                                                                                                                                                                                                                                                                                                                                                                                                                                                                                                                                                                             | COVID-19               | Grade 3      | 22-Mar-20            | 22-Mar-20                 | 28-Nov-21               | 151 524     | 151 524         | 1 940  | 1.3% |
| The first COVID-19 confirmed case was reported in Mozambique on 22 March 2020. As of 28 November 2021, a total of 151 524 confirmed COVID-19 cases were reported in the country including 1 940 deaths and 149 485 recoveries.                                                                                                                                                                                                                                                                                                                                                                                                                                                                                                                                                                                                                                                                                                                                                                                                         |                        |              |                      |                           |                         |             |                 |        |      |
| Mozambique                                                                                                                                                                                                                                                                                                                                                                                                                                                                                                                                                                                                                                                                                                                                                                                                                                                                                                                                                                                                                             | Measles                | Ungraded     | 25-Jun-2020          | 1-Jan-21                  | 10-Oct-21               | 125         | 2               | 0      | 0.0% |
| Since the beginning of 2021, measles outbreak is active in 11 provinces. As of 10 October 2021 (week 40), there were 125 cases reported including 2 confirmed cases and no death. In 2020 at the same period, there were 185 confirmed cases and no death.                                                                                                                                                                                                                                                                                                                                                                                                                                                                                                                                                                                                                                                                                                                                                                             |                        |              |                      |                           |                         |             |                 |        |      |
| Namibia                                                                                                                                                                                                                                                                                                                                                                                                                                                                                                                                                                                                                                                                                                                                                                                                                                                                                                                                                                                                                                | COVID-19               | Grade 3      | 14-Mar-20            | 14-Mar-20                 | 27-Nov-21               | 129 180     | 129 180         | 3 573  | 0.0% |
| The first case of COVID-19 was detected in Namibia on the 14 March 2020. As of 27 November 2021, a total of 129 180 confirmed cases with 125 483 recovered and 3 573 deaths have been reported.                                                                                                                                                                                                                                                                                                                                                                                                                                                                                                                                                                                                                                                                                                                                                                                                                                        |                        |              |                      |                           |                         |             |                 |        |      |
| Namibia                                                                                                                                                                                                                                                                                                                                                                                                                                                                                                                                                                                                                                                                                                                                                                                                                                                                                                                                                                                                                                | Hepatitis E            | Protracted 1 | 18-Dec-2017          | 8-Sep-17                  | 15-Aug-2021             | 8 090       | 8 090           | 66     | 0.8% |
| The current outbreak in Namibia started in December 2017. As of 15 August 2021, a cumulative total of 8 090 cases (2 117 laboratory-confirmed, 4 738 epidemiologically linked, and 1 235 suspected cases) including 66 deaths (CFR=0.8%) have been reported countrywide. Khomas Region remains the most affected region, accounting for 5 004 (62.0%) of reported cases, followed by Erongo 1 717 (21.2%).                                                                                                                                                                                                                                                                                                                                                                                                                                                                                                                                                                                                                             |                        |              |                      |                           |                         |             |                 |        |      |
| Niger                                                                                                                                                                                                                                                                                                                                                                                                                                                                                                                                                                                                                                                                                                                                                                                                                                                                                                                                                                                                                                  | Floods                 | Ungraded     | 15-Jul-2021          | 2-Aug-2021                | 21-Nov-21               | 250 000     | -               | 77     | 0.0% |
| In Niger, torrential rainfall and floods affected more than 250,000 people and left 77 people dead. Since the start of the 2021 rainy season in June, torrential rainfall has led to the collapse of more than 21 000 houses, the destruction of more than 7 300 hectares of cultivable land, and the death of more than 10 000 livestock. Thousands of people have been rendered homeless and vulnerable due to the loss of their livelihoods. Floods have been followed by outbreaks of cholera across seven of the country's eight regions.                                                                                                                                                                                                                                                                                                                                                                                                                                                                                         |                        |              |                      |                           |                         |             |                 |        |      |
| Niger                                                                                                                                                                                                                                                                                                                                                                                                                                                                                                                                                                                                                                                                                                                                                                                                                                                                                                                                                                                                                                  | Humanitarian crisis    | Protracted 1 | 1-Feb-2015           | 1-Feb-2015                | 31-Oct-21               | -           | -               | -      | -    |
| According to OCHA statistics, 3.8 million people need humanitarian assistance in 2021. As of 31 Oct 2021, 264 257 people are internally displaced, 249 816 are refugees, and 2.3 million are food insecure (phase 3+ and above). Security tensions have had a negative impact on local markets and price of food in the Tillabéri region causing concern for nutrition levels in children in the region. The trend of children admitted into national food program has increased in certain areas of the country (including Tillabéri and Maradi) between July and August 2021. According to the Humanitarian Response Plan 2021, more than 1.8 million children <5 years need nutritional assistance, including 1.6 million children between 6-59 months for management of acute malnutrition and 178 228 children between 6-23 months for preventive supplementation.                                                                                                                                                                |                        |              |                      |                           |                         |             |                 |        |      |
| Niger                                                                                                                                                                                                                                                                                                                                                                                                                                                                                                                                                                                                                                                                                                                                                                                                                                                                                                                                                                                                                                  | Cholera                | Grade 1      | 7-Aug-2021           | 7-Jun-2021                | 14-Nov-21               | 5 553       | 194             | 163    | 2.9% |
| As of 25 October 2021, a total of 5 553 cases including 163 deaths (CFR 2.9%) have been reported. Seven regions out of eight have reported cases so far (Tahoua, Niamey, Tillabéri, Dosso, Maradi Zinder and Diffa). To date 35 out of 72 health districts have reported cases with 3 health districts currently actives. The rainy season is still ongoing causing floods that contribute to the spread of the outbreak.                                                                                                                                                                                                                                                                                                                                                                                                                                                                                                                                                                                                              |                        |              |                      |                           |                         |             |                 |        |      |
| Niger                                                                                                                                                                                                                                                                                                                                                                                                                                                                                                                                                                                                                                                                                                                                                                                                                                                                                                                                                                                                                                  | COVID-19               | Grade 3      | 19-Mar-20            | 19-Mar-20                 | 28-Nov-21               | 6 958       | 6 858           | 252    | 3.6% |
| From 19 March 2020 to 28 November 2021, a total of 6 958 cases with 254 deaths have been reported across the country. A total of 6 451 recoveries have been reported from the country.                                                                                                                                                                                                                                                                                                                                                                                                                                                                                                                                                                                                                                                                                                                                                                                                                                                 |                        |              |                      |                           |                         |             |                 |        |      |
| Niger                                                                                                                                                                                                                                                                                                                                                                                                                                                                                                                                                                                                                                                                                                                                                                                                                                                                                                                                                                                                                                  | Malaria                | Ungraded     | 4-Oct-21             | 1-Jan-21                  | 19-Sep-21               | 2 297 488   | 2 297 488       | 2 124  | 0.1% |
| Between epidemiological weeks 1 and 37 2021 (ending 19 September), 2 297 488 confirmed malaria cases including 2 124 deaths were reported through routine surveillance in Niger. Although the weekly attack rates follow the trends seen in the last two years, epidemic thresholds have been exceeded in several districts in the regions with increases in malaria incidence and mortality. Investigations are being planned to better understand the situation.                                                                                                                                                                                                                                                                                                                                                                                                                                                                                                                                                                     |                        |              |                      |                           |                         |             |                 |        |      |
| Niger                                                                                                                                                                                                                                                                                                                                                                                                                                                                                                                                                                                                                                                                                                                                                                                                                                                                                                                                                                                                                                  | Measles                | Ungraded     | 10-May-2019          | 1-Jan-21                  | 18-Jul-2021             | 9 095       | 924             | 16     | 0.2% |
| From January to 18 July 2021, 9 095 suspected cases have been reported and 16 deaths. Out of suspected cases, 1 795 were investigated including 924 lab confirmed measles cases, 55% are older than 4 years; 51 of 72 health districts have reported at least 3 confirmed cases of measles in month. Response vaccination took place in 12 health districts (Arlit, Bilma, Dogondoutchi, Tibiri, Gazaoua, Niamey 2, Niamey 3, Niamey 4, Tahoua Com, Ayerou, Balleyara, Tesker) across 8 regions. In 2020, 2 079 cases have been suspected of which 241 lab confirmed (IgM positive) and 4 deaths in 8 regions. In 2019 a total of 10 207 suspected measles cases were reported from eight regions in the country.                                                                                                                                                                                                                                                                                                                      |                        |              |                      |                           |                         |             |                 |        |      |
| Niger                                                                                                                                                                                                                                                                                                                                                                                                                                                                                                                                                                                                                                                                                                                                                                                                                                                                                                                                                                                                                                  | Meningitis             | Ungraded     |                      | 1-Jan-21                  | 25-Oct-21               | 1 351       | -               | 75     | 5.6% |
| Since the beginning of the year 2021 to week 43 ending 25 October 2021, 1 351 cases have been reported with 75 deaths (CFR 5.5%). Two districts have surpassed the epidemic threshold and six districts are on alert.                                                                                                                                                                                                                                                                                                                                                                                                                                                                                                                                                                                                                                                                                                                                                                                                                  |                        |              |                      |                           |                         |             |                 |        |      |
| Niger                                                                                                                                                                                                                                                                                                                                                                                                                                                                                                                                                                                                                                                                                                                                                                                                                                                                                                                                                                                                                                  | Poliomyelitis (cVDPV2) | Grade 2      | 1-Oct-18             | 1-Oct-18                  | 26-Nov-21               | 25          | 25              | 0      | 0.0% |
| No case of circulating vaccine-derived poliovirus type 2 (cVDPV2) was reported this week. There are five cVDPV2 cases in 2021 and there were 10 cases reported in 2020                                                                                                                                                                                                                                                                                                                                                                                                                                                                                                                                                                                                                                                                                                                                                                                                                                                                 |                        |              |                      |                           |                         |             |                 |        |      |
| Nigeria                                                                                                                                                                                                                                                                                                                                                                                                                                                                                                                                                                                                                                                                                                                                                                                                                                                                                                                                                                                                                                | Humanitarian crisis    | Protracted 3 | 10-Oct-16            | n/a                       | 31-Oct-21               | -           | -               | -      | -    |
| In 2021, more than 8.7 million require humanitarian assistance in Borno, Adamawa, and Yobe states. Attacks in Nigeria have continued in LGAs of Borno, Adama, and Yobe (BAY) states making the North-Eastern part of the country volatile. As of 31 August 2021, there were 3 024 199 IDPs according to UNHCR. As of 31 October 2021, there were 73 346 refugees from other countries within Nigeria with more than 68K (or 95%) coming from Cameroon. More than 2.1 million IDPs (72.5% of all IDPs in the country) are in the North-East, while the rest (27.5%) are in the North-West/North-Central part of the country. Of those in need of humanitarian assistance, many have limited access to basic health care and other essential services. Some 800K previously inaccessible individuals in need of nutrition and health care in Borno state are now reachable due to the liberation of these areas by military insurgence. Health conditions in this area exceed emergency thresholds for mortality and acute malnutrition. |                        |              |                      |                           |                         |             |                 |        |      |



| Country                                                                                                                                                                                                                                                                                                                                                                                                                                                                                                                                                                                                                                                                                        | Event                  | Grade    | Date notified to WCO | Start of reporting period | End of reporting period | Total cases | Cases Confirmed | Deaths | CFR   |
|------------------------------------------------------------------------------------------------------------------------------------------------------------------------------------------------------------------------------------------------------------------------------------------------------------------------------------------------------------------------------------------------------------------------------------------------------------------------------------------------------------------------------------------------------------------------------------------------------------------------------------------------------------------------------------------------|------------------------|----------|----------------------|---------------------------|-------------------------|-------------|-----------------|--------|-------|
| Nigeria                                                                                                                                                                                                                                                                                                                                                                                                                                                                                                                                                                                                                                                                                        | Cholera                | Grade 2  | 12-Jan-21            | 12-Jan-21                 | 7-Nov-21                | 100 057     | 100 057         | 3 449  | 3.4%  |
| As of 7 November 2021, a total of 100 057 suspected cases including 3 449 deaths (CFR 3.4%) have been reported from 32 states and FCT in 2021. Of the suspected cases since the beginning of the year, the 5-14years age group is the most affected, while males and females are equally affected. Four states Bauchi (19 470 cases), Jigawa (12 965 cases), Kano (12 116 cases), and Zamfara (11 101 cases) account for 56% of all cumulative cases. Twelve LGAs across five states Bauchi(4), Zamfara(4), Jigawa(2), Kano(1), and Katsina(1) have reported more than 1 000 cases each this year.                                                                                             |                        |          |                      |                           |                         |             |                 |        |       |
| Nigeria                                                                                                                                                                                                                                                                                                                                                                                                                                                                                                                                                                                                                                                                                        | COVID-19               | Grade 3  | 27-Feb-2020          | 27-Feb-2020               | 28-Nov-21               | 214 092     | 214 092         | 2 976  | 1.4%  |
| The first case of COVID-19 was first detected in Nigeria on the 27 February 2020. As of 28 November 2021, a total of 214 092 confirmed cases with 207 254 recovered and 2 976 deaths have been reported.                                                                                                                                                                                                                                                                                                                                                                                                                                                                                       |                        |          |                      |                           |                         |             |                 |        |       |
| Nigeria                                                                                                                                                                                                                                                                                                                                                                                                                                                                                                                                                                                                                                                                                        | Lassa fever            | Ungraded | 1-Jan-21             | 1-Jan-21                  | 31-Oct-21               | 3 496       | 403             | 79     | 19.6% |
| Lassa fever is an endemic disease in Nigeria which is reportable through IHR. In week 43 of 2021, the number of new confirmed cases was 2. These were reported from Ondo and Edo States. Cumulatively from week 1 to week 43 of 2021, a total of 403 confirmed cases including 79 deaths among confirmed cases have been reported with a case fatality rate of 19.6% across 15 states. In total, 3 496 cases are suspected in 2021. This is lower than the same period reported in 2020. Of all confirmed cases 44% are from Edo, 35% from Ondo and 5% are from Taraba States.                                                                                                                 |                        |          |                      |                           |                         |             |                 |        |       |
| Nigeria                                                                                                                                                                                                                                                                                                                                                                                                                                                                                                                                                                                                                                                                                        | Measles                | Ungraded | 25-Sep-17            | 1-Jan-21                  | 31-Aug-2021             | 10 106      | 6 718           | 87     | 0.9%  |
| In 2020, Nigeria reported 9 316 confirmed cases, with 55 deaths, CFR 0.6%. From January 2021 to 31 August 2021, 10 106 suspected cases have been reported in Nigeria including 87 deaths. Of the suspected cases reported, 6 718 (66.5%) were confirmed (1 065 lab confirmed 2 734 epi-linked and 2 919 clinically compatible), 3 272 (32.4%) were discarded and 116 (1.2%) are pending classification. The most affected state is Borno with 5 614 cases. The age group 9 - 59 months accounted for 5 048 (75.1%) of all confirmed cases. During the month of August, 189 were reported; no death was recorded among confirmed cases.                                                         |                        |          |                      |                           |                         |             |                 |        |       |
| Nigeria                                                                                                                                                                                                                                                                                                                                                                                                                                                                                                                                                                                                                                                                                        | Monkeypox              | Ungraded | 9-Sep-21             | 1-Jan-21                  | 30-Sep-21               | 79          | 23              | 0      | 0.0%  |
| According to the Nigeria Centre for Disease Control (NCDC), in September 2021, no additional cases of suspected monkeypox were reported. Therefore in 2021, the total remains at 79 suspected cases reported since the beginning of the year. Of the suspected cases, 23 were confirmed from eight states Delta (7), Lagos (4), Bayelsa (4), Rivers (4), Edo (1), FCT (1), Niger (1), Ogun (1) and, no deaths recorded from all States.                                                                                                                                                                                                                                                        |                        |          |                      |                           |                         |             |                 |        |       |
| Nigeria                                                                                                                                                                                                                                                                                                                                                                                                                                                                                                                                                                                                                                                                                        | Poliomyelitis (cVDPV2) | Grade 2  | 1-Jun-2018           | 1-Jan-18                  | 26-Nov-21               | 381         | 381             | 0      | 0.0%  |
| Nine cases of circulating vaccine-derived poliovirus type 2 (cVDPV2) were reported; two in Borno, one each in Gombe, Kano, Katsina and Taraba and three in Jigawa. There are 289 cases reported in 2021. There were eight cases reported in 2020, 118 cVDPV2 cases reported in 2019 and 34 in 2018.                                                                                                                                                                                                                                                                                                                                                                                            |                        |          |                      |                           |                         |             |                 |        |       |
| Nigeria                                                                                                                                                                                                                                                                                                                                                                                                                                                                                                                                                                                                                                                                                        | Yellow fever           | Grade 2  | 12-Sep-17            | 1-Jan-21                  | 30-Sep-21               | 39          | 39              | 2      | 5.1%  |
| From 1 January 2021 to 30 September 2021, a total of 1 518 suspect Yellow fever (YF) cases were reported in 428 Local Government Areas (LGAs) across all 37 States including the Federal Capital Territory. A total of 74 blood samples (59 presumptive positive and 15 inconclusive) were sent to the Institut Pasteur in Dakar and 39 samples tested positive for YF by plaque reduction neutralization test (PRNT). Some PRNT-positive cases had a history of YF vaccination. There were two deaths reported among the PRNT positive cases. The YF PRNT positive cases were reported from 11 states (Anambra, Benue, Delta, Enugu, Imo, Kogi, Nasarawa, Niger, Ondo, Osun, and Oyo states). |                        |          |                      |                           |                         |             |                 |        |       |
| Rwanda                                                                                                                                                                                                                                                                                                                                                                                                                                                                                                                                                                                                                                                                                         | COVID-19               | Grade 3  | 14-Mar-20            | 14-Mar-20                 | 28-Nov-21               | 100 330     | 100 330         | 1 342  | 1.3%  |
| The Rwanda Ministry of Health announced the confirmation of the first COVID-19 case on 14 March 2020. As of 28 November 2021, a total of 100 330 cases with 1 342 deaths and 98 756 recovered cases have been reported in the country.                                                                                                                                                                                                                                                                                                                                                                                                                                                         |                        |          |                      |                           |                         |             |                 |        |       |
| Sao Tome and Principe                                                                                                                                                                                                                                                                                                                                                                                                                                                                                                                                                                                                                                                                          | COVID-19               | Grade 3  | 6-Apr-2020           | 6-Apr-2020                | 28-Nov-21               | 3 731       | 3 731           | 56     | 1.5%  |
| On 6 April 2020, the Ministry of Health of Sao Tome and Principe reported the country's first case of COVID-19. As of 28 November 2021, a total of 3 731 confirmed cases of COVID-19 have been reported, including 56 deaths. A total of 3 675 cases have been reported as recoveries.                                                                                                                                                                                                                                                                                                                                                                                                         |                        |          |                      |                           |                         |             |                 |        |       |
| Senegal                                                                                                                                                                                                                                                                                                                                                                                                                                                                                                                                                                                                                                                                                        | COVID-19               | Grade 3  | 2-Mar-20             | 2-Mar-20                  | 28-Nov-21               | 73 985      | 73 985          | 1 885  | 2.5%  |
| From 2 March 2020 to 28 November 2021, a total of 73 965 confirmed cases of COVID-19 including 1 885 deaths and 72 087 recoveries have been reported in Senegal.                                                                                                                                                                                                                                                                                                                                                                                                                                                                                                                               |                        |          |                      |                           |                         |             |                 |        |       |
| Senegal                                                                                                                                                                                                                                                                                                                                                                                                                                                                                                                                                                                                                                                                                        | Dengue                 | Ungraded | 18-Nov-21            | 18-Nov-21                 | 18-Nov-21               | 86          | 25              | 0      | 0.0%  |
| On 8 October 2021, the Dakar Pasteur Institute notified to health authorities the confirmation of cases of Dengue Serotype 1 from the Richard Toll health district in the Saint-Louis health region. As of 11 November 2021, a total of 86 cases are reported from 17 health districts. The Ricard Toll health district has reported more cases with 58 cases out of 86 (67.4%). Two serotypes of the Dengue virus are reported so far: serotype 1 and 3.                                                                                                                                                                                                                                      |                        |          |                      |                           |                         |             |                 |        |       |
| Senegal                                                                                                                                                                                                                                                                                                                                                                                                                                                                                                                                                                                                                                                                                        | Poliomyelitis (cVDPV2) | Grade 2  |                      | 4-Apr-2021                | 26-Nov-21               | 16          | 16              | 0      | 0.0%  |
| No case of circulating vaccine-derived poliovirus type 2 (cVDPV2) was reported this week. The number of 2021 cases remains at 16.                                                                                                                                                                                                                                                                                                                                                                                                                                                                                                                                                              |                        |          |                      |                           |                         |             |                 |        |       |
| Seychelles                                                                                                                                                                                                                                                                                                                                                                                                                                                                                                                                                                                                                                                                                     | COVID-19               | Grade 3  | 14-Mar-20            | 14-Mar-20                 | 28-Nov-21               | 23 390      | 23 390          | 122    | 0.5%  |
| Since the first COVID-19 confirmed cases were reported in Seychelles 14 March 2020, as of 28 November 2021 a total of 23 390 cases have been confirmed, including 22 787 recoveries and 122 deaths have been reported.                                                                                                                                                                                                                                                                                                                                                                                                                                                                         |                        |          |                      |                           |                         |             |                 |        |       |
| Sierra Leone                                                                                                                                                                                                                                                                                                                                                                                                                                                                                                                                                                                                                                                                                   | Mass fire incident     | Ungraded | 5-Nov-21             | 6-Nov-21                  | 22-Nov-21               | 304         | 304             | 149    | 49.0% |
| On 20 November 2021, there was a Mass Fire Accident involving a fuel tank that ruptured its tanks after a collision with another vehicle. The fuel ignited and caused a mass burn affecting a number of persons with various degrees of burns including instant deaths. As of 12 November 2021, 304 victims were reported on with 149 deaths and 51 are currently in admission. So far 42 patients have been discharged and are being treated as outpatients for burns.                                                                                                                                                                                                                        |                        |          |                      |                           |                         |             |                 |        |       |
| Sierra Leone                                                                                                                                                                                                                                                                                                                                                                                                                                                                                                                                                                                                                                                                                   | COVID-19               | Grade 3  | 31-Mar-20            | 27-Mar-20                 | 27-Nov-21               | 6 402       | 6 402           | 121    | 1.9%  |
| On 31 March 2020, the President of Sierra Leone reported the first confirmed COVID-19 case in the country. As of 27 November 2021, a total of 6 402 confirmed COVID-19 cases were reported in the country including 121 deaths and 4 398 recovered cases.                                                                                                                                                                                                                                                                                                                                                                                                                                      |                        |          |                      |                           |                         |             |                 |        |       |

| Country                                                                                                                                                                                                                                                                                                                                                                                                                                                                                                                                                                                                                                                                                                                                                                                                                                                                                                                                                                                                                                                                 | Event                  | Grade        | Date notified to WCO | Start of reporting period | End of reporting period | Total cases | Cases Confirmed | Deaths | CFR   |
|-------------------------------------------------------------------------------------------------------------------------------------------------------------------------------------------------------------------------------------------------------------------------------------------------------------------------------------------------------------------------------------------------------------------------------------------------------------------------------------------------------------------------------------------------------------------------------------------------------------------------------------------------------------------------------------------------------------------------------------------------------------------------------------------------------------------------------------------------------------------------------------------------------------------------------------------------------------------------------------------------------------------------------------------------------------------------|------------------------|--------------|----------------------|---------------------------|-------------------------|-------------|-----------------|--------|-------|
| Sierra Leone                                                                                                                                                                                                                                                                                                                                                                                                                                                                                                                                                                                                                                                                                                                                                                                                                                                                                                                                                                                                                                                            | Lassa fever            | Ungraded     | 12-Feb-2021          | 1-Jan-21                  | 30-Sep-21               | 14          | 14              | 9      | 64.3% |
| As of 30 September 2021, 14 cases of Lassa fever have been reported from Kenema (12) and Kailahun (2) districts since the beginning of 2021. Of these 9 of the cases have died yielding CFR of 64%. Lassa fever is known to be endemic in Sierra Leone and surrounding countries.                                                                                                                                                                                                                                                                                                                                                                                                                                                                                                                                                                                                                                                                                                                                                                                       |                        |              |                      |                           |                         |             |                 |        |       |
| Sierra Leone                                                                                                                                                                                                                                                                                                                                                                                                                                                                                                                                                                                                                                                                                                                                                                                                                                                                                                                                                                                                                                                            | Measles                | Ungraded     | 1-Nov-21             | 19-Oct-21                 | 31-Oct-21               | 25          | 3               | 0      | 0.0%  |
| On 29 October 2021, Sierra Leone's Ministry of Health and Sanitation declared a measles outbreak in Kambia District following the confirmation of three cases at the Central Public Health Reference Laboratory (CPHRL) in Freetown. The date of onset of symptoms for the first two cases was 11 October 2021. As of 31 October 2021, 25 cases of which 3 confirmed, 0 deaths and 2 recovered have been reported.                                                                                                                                                                                                                                                                                                                                                                                                                                                                                                                                                                                                                                                      |                        |              |                      |                           |                         |             |                 |        |       |
| Sierra Leone                                                                                                                                                                                                                                                                                                                                                                                                                                                                                                                                                                                                                                                                                                                                                                                                                                                                                                                                                                                                                                                            | Poliomyelitis (cVDPV2) | Grade 2      | 10-Dec-2020          | 10-Dec-2020               | 26-Nov-21               | 15          | 15              |        | 0.0%  |
| No new cases of circulating vaccine-derived poliovirus type 2 (cVDPV2) reported this week. So far, 5 cases have been reported in 2021, and the number of cases 2020 remains 10.                                                                                                                                                                                                                                                                                                                                                                                                                                                                                                                                                                                                                                                                                                                                                                                                                                                                                         |                        |              |                      |                           |                         |             |                 |        |       |
| South Africa                                                                                                                                                                                                                                                                                                                                                                                                                                                                                                                                                                                                                                                                                                                                                                                                                                                                                                                                                                                                                                                            | COVID-19               | Grade 3      | 5-Mar-20             | 3-Mar-20                  | 28-Nov-21               | 2 961 406   | 2 961 406       | 89 799 | 3.4%  |
| Since the start of the COVID-19 pandemic in South Africa by 28 November 2021, a cumulative total of 2 961 406 confirmed cases and 89 799 deaths have been reported with 2 847 771 recoveries.                                                                                                                                                                                                                                                                                                                                                                                                                                                                                                                                                                                                                                                                                                                                                                                                                                                                           |                        |              |                      |                           |                         |             |                 |        |       |
| South Sudan                                                                                                                                                                                                                                                                                                                                                                                                                                                                                                                                                                                                                                                                                                                                                                                                                                                                                                                                                                                                                                                             | Acute Food Insecurity  | Grade 2      | 18-Dec-2020          | 5-Apr-2021                | 29-Oct-21               | -           | -               | -      | -     |
| According to the World Food Programme an estimated 7.2 million people (60% of the country's total population) faced crisis levels of food insecurity phase (IPC) 3 or worse from April to July 2021 - a figure that increased by 25% compared to the previous three months. Of the total number, 108K are in IPC 5, 2.4 are in IPC 4, and 4.6 million are in IPC 3. The total number includes 1.9 million acutely malnourished women and children suffering and 1.71 million internally displaced people. The six most affected counties are Pibor, Akobo, Aweil South, Tonj North, Tonj South and Tonj East. In 2021, the World Food Programme has reached some 284 848 (35% of an estimated 800K) flood-affected people with food and nutrition assistance. Due to deteriorating security situations in Tambura and Greater Pibor Administrative Area humanitarian operations have ceased in October 2021.                                                                                                                                                            |                        |              |                      |                           |                         |             |                 |        |       |
| South Sudan                                                                                                                                                                                                                                                                                                                                                                                                                                                                                                                                                                                                                                                                                                                                                                                                                                                                                                                                                                                                                                                             | Floods                 | Ungraded     | 15-Jul-2021          | 1-May-2021                | 3-Nov-21                | -           | -               | -      | -     |
| The escalating flooding began in May 2021 and has affected over 800 000 people in areas along the Nile and Lol rivers and Sudd marshlands as of 3 November 2021. Flooding has affected over 30 counties across 8 states with communities in Jonglei, Upper Nile and Unity states being the most affected. A rapidly worsening situation was noted in October 2021 with a significant increase in the number of people and locations affected by flooding in Jonglei State (267 000 people affected), Unity State (196 000 people affected), and Upper Nile (125,000 people affected).                                                                                                                                                                                                                                                                                                                                                                                                                                                                                   |                        |              |                      |                           |                         |             |                 |        |       |
| South Sudan                                                                                                                                                                                                                                                                                                                                                                                                                                                                                                                                                                                                                                                                                                                                                                                                                                                                                                                                                                                                                                                             | Humanitarian crisis    | Protracted 3 | 15-Aug-2016          | n/a                       | 31-Oct-21               | -           | -               | -      | -     |
| The long-standing and complex humanitarian crisis in South Sudan continues. From the start of 2021, there is a total of 8.3 million people in need of humanitarian assistance, 1.7 million people internally displaced and 175K people living in protection of civilian sites across the country. Inter-ethnic violence in Tambura county has continued since June 2021 with the most recent incidents occurring on 14 and 19 October 2021. In Tonj East and Tonj North counties intercommunal attacks have persisted for most of 2021 hindering hospital functionality, food aid delivery, and humanitarian operations. Thirteen armed attacks have also hindered humanitarian aid delivery in Lainya, Morobo and Yei counties in 2021. A threat on humanitarian operations by youth groups on 4 October 2021 in the Greater Pibor Administrative Area has caused the relocation of 80 humanitarian staff and impacted more than 100K vulnerable people. Youth groups in the area demanded for 80% of all national employment opportunities to be reserved for locals. |                        |              |                      |                           |                         |             |                 |        |       |
| South Sudan                                                                                                                                                                                                                                                                                                                                                                                                                                                                                                                                                                                                                                                                                                                                                                                                                                                                                                                                                                                                                                                             | COVID-19               | Grade 3      | 5-Apr-2020           | 5-Apr-2020                | 28-Nov-21               | 12 755      | 12 755          | 133    | 1.0%  |
| On 5 April 2020, the Ministry of Health of South Sudan reported the country's first case of COVID-19. As of 28 November 2021, a total of 12 755 confirmed COVID-19 cases were reported in the country including 133 deaths and 12 463 recovered cases.                                                                                                                                                                                                                                                                                                                                                                                                                                                                                                                                                                                                                                                                                                                                                                                                                  |                        |              |                      |                           |                         |             |                 |        |       |
| South Sudan                                                                                                                                                                                                                                                                                                                                                                                                                                                                                                                                                                                                                                                                                                                                                                                                                                                                                                                                                                                                                                                             | Hepatitis E            | Ungraded     | 3-Jan-18             | 3-Jan-18                  | 14-Nov-21               | 1 394       | 104             | 9      | 0.6%  |
| The current outbreak in the Bentiu IDP camp, which started at the beginning of 2018, is ongoing. As of 14 Nov 2021, a total of 1 394 cases of hepatitis E including 9 deaths (CFR: 0.6%) have been reported since 1 Jan 2018. There were 40 new cases reported in week 45, 2021. Hepatitis E cases have been above the epidemic threshold since week 19 of 2021 which has been mostly attributed to declining water, sanitation and hygiene services in the camp due to reduced funding, however efforts are now underway to respond to the sanitation and outbreak needs.                                                                                                                                                                                                                                                                                                                                                                                                                                                                                              |                        |              |                      |                           |                         |             |                 |        |       |
| South Sudan                                                                                                                                                                                                                                                                                                                                                                                                                                                                                                                                                                                                                                                                                                                                                                                                                                                                                                                                                                                                                                                             | Measles                | Ungraded     | 24-Nov-18            | 19-Sep-19                 | 10-Oct-21               | 1 313       | 54              | 2      | 0.2%  |
| Since week 38 of 2019 to 10 October 2021, a total of 1 313 cases of measles were reported including 52 confirmed cases and two deaths. The outbreak is controlled in 9 counties (Tonj East, Juba, Bor, Kapoeta East, Jebel Boma, Aweil East, Wau, Pibor and Ibba). No county has reported outbreak in 2021.                                                                                                                                                                                                                                                                                                                                                                                                                                                                                                                                                                                                                                                                                                                                                             |                        |              |                      |                           |                         |             |                 |        |       |
| South Sudan                                                                                                                                                                                                                                                                                                                                                                                                                                                                                                                                                                                                                                                                                                                                                                                                                                                                                                                                                                                                                                                             | Poliomyelitis (cVDPV2) | Grade 2      | 22-Oct-20            | 22-Oct-20                 | 26-Nov-21               | 59          | 59              | 0      | 0.0%  |
| No case of circulating vaccine-derived poliovirus type 2 (cVDPV2) was reported this week. There are 59 cVDPV2 cases in the country; 9 in 2021 and 50 in 2020.                                                                                                                                                                                                                                                                                                                                                                                                                                                                                                                                                                                                                                                                                                                                                                                                                                                                                                           |                        |              |                      |                           |                         |             |                 |        |       |
| Tanzania, United Republic of                                                                                                                                                                                                                                                                                                                                                                                                                                                                                                                                                                                                                                                                                                                                                                                                                                                                                                                                                                                                                                            | COVID-19               | Grade 3      | 16-Mar-20            | 16-Mar-20                 | 19-Nov-21               | 26 261      | 26 261          | 730    | 2.8%  |
| The Ministry of Health, Community Health, Community Development, Gender, Elderly and Children in Tanzania reported the country's first case of COVID-19 on 16 March 2020. As of 19 November 2021, a total of 26 261 cases have been reported in the country including 730 deaths.                                                                                                                                                                                                                                                                                                                                                                                                                                                                                                                                                                                                                                                                                                                                                                                       |                        |              |                      |                           |                         |             |                 |        |       |
| Togo                                                                                                                                                                                                                                                                                                                                                                                                                                                                                                                                                                                                                                                                                                                                                                                                                                                                                                                                                                                                                                                                    | Cholera                | Ungraded     | 8-Nov-21             | 7-Nov-21                  | 17-Nov-21               | 34          | 11              | 4      | 11.8% |
| The Cholera outbreak was declared by health authorities on 7 November 2021. The Index case was notified on 5 November 2021 by the peripheral health Unit of Agouégan in the Lacs district. This was a 15-year-old boy presenting with profuse diarrhoea with signs of severe dehydration and died later. The stool sample was taken and sent to the National Institute of Hygiene (INH) laboratory and was confirmed positive for <i>Vibrio cholerae</i> On 7 November 2021. The index case was living in the same area with another person who sought health care at the same health facility on 3 November 2021 having the same clinical picture made of diarrhoea and dehydration. The person was treated as an outpatient and died the following day at home. As of 17 November 2021, a total of 34 cases and 4 deaths (CFR: 11.7%) are reported in the Lacs district.                                                                                                                                                                                              |                        |              |                      |                           |                         |             |                 |        |       |

| Country                                                                                                                                                                                                                                                                                                                                                                                                                                                                                                                                                                                                                                                                                                                                                   | Event                  | Grade    | Date notified to WCO | Start of reporting period | End of reporting period | Total cases | Cases Confirmed | Deaths | CFR  |
|-----------------------------------------------------------------------------------------------------------------------------------------------------------------------------------------------------------------------------------------------------------------------------------------------------------------------------------------------------------------------------------------------------------------------------------------------------------------------------------------------------------------------------------------------------------------------------------------------------------------------------------------------------------------------------------------------------------------------------------------------------------|------------------------|----------|----------------------|---------------------------|-------------------------|-------------|-----------------|--------|------|
| Togo                                                                                                                                                                                                                                                                                                                                                                                                                                                                                                                                                                                                                                                                                                                                                      | COVID-19               | Grade 3  | 6-Mar-20             | 1-Mar-20                  | 28-Nov-21               | 26 250      | 26 250          | 243    | 0.9% |
| On 6 March 2020, the Ministry of Health and Public Hygiene of Togo announced the confirmation of its first case of COVID-19. As of 28 November 2021, a total of 26 250 cases including 243 deaths and 25 907 recovered cases have been reported in the country.                                                                                                                                                                                                                                                                                                                                                                                                                                                                                           |                        |          |                      |                           |                         |             |                 |        |      |
| Togo                                                                                                                                                                                                                                                                                                                                                                                                                                                                                                                                                                                                                                                                                                                                                      | Poliomyelitis (cVDPV2) | Grade 2  | 18-Oct-19            | 13-Sep-19                 | 26-Nov-21               | 17          | 17              | 0      | 0.0% |
| No new case of cVDPV2 was reported during the past week. There were nine cases in 2020 while the total number of cVDPV2 cases reported in 2019 remains eight.                                                                                                                                                                                                                                                                                                                                                                                                                                                                                                                                                                                             |                        |          |                      |                           |                         |             |                 |        |      |
| Uganda                                                                                                                                                                                                                                                                                                                                                                                                                                                                                                                                                                                                                                                                                                                                                    | Cholera                | Ungraded | 15-Nov-21            | 4-Nov-21                  | 17-Nov-21               | 163         | 7               | 0      | 0.0% |
| An active cholera outbreak is ongoing in Uganda since 4 November 2021. The epicenter are the villages of Nyarugugu B and C in the district of Isingiro in South-Western Uganda, but also suspected cases of cholera are reported in the capital city of Kampala. As of 17 November 2021 a total of 163 cases, 7 confirmed and zero death (CFR 0.0 %), have been reported including 152 cases from Isingiro district and 11 from the capital city of Kampala.                                                                                                                                                                                                                                                                                              |                        |          |                      |                           |                         |             |                 |        |      |
| Uganda                                                                                                                                                                                                                                                                                                                                                                                                                                                                                                                                                                                                                                                                                                                                                    | COVID-19               | Grade 3  | 21-Mar-20            | 21-Mar-20                 | 27-Nov-21               | 127 523     | 127 523         | 3 252  | 2.6% |
| The first COVID-19 confirmed case was reported in Uganda on 21 March 2020. As of 27 November 2021, a total of 127 523 confirmed COVID-19 cases, 97 847 recoveries with 3 252 deaths.                                                                                                                                                                                                                                                                                                                                                                                                                                                                                                                                                                      |                        |          |                      |                           |                         |             |                 |        |      |
| Zambia                                                                                                                                                                                                                                                                                                                                                                                                                                                                                                                                                                                                                                                                                                                                                    | COVID-19               | Grade 3  | 18-Mar-20            | 18-Mar-20                 | 28-Nov-21               | 210 143     | 210 143         | 3 667  | 1.7% |
| The first COVID-19 confirmed case was reported in Zambia on 18 March 2020. As of 28 November 2021, a total of 210 143 confirmed COVID-19 cases were reported in the country including 3 667 deaths and 206 386 recovered cases.                                                                                                                                                                                                                                                                                                                                                                                                                                                                                                                           |                        |          |                      |                           |                         |             |                 |        |      |
| Zimbabwe                                                                                                                                                                                                                                                                                                                                                                                                                                                                                                                                                                                                                                                                                                                                                  | Anthrax                | Ungraded | 6-May-2019           | 6-May-2019                | 7-Nov-21                | 979         | 0               | 3      | 0.3% |
| The anthrax outbreak is ongoing in Zimbabwe. Nine new anthrax cases and no death were reported in week 44 of 2021 ending on 7 November 2021. The cases were reported by Gokwe North District (2), Gokwe South District (4) in Midlands Province, Goromonzi District (1) in Mashonaland East Province, Hurungwe District (1) and Makonde District (1) in Mashonaland West Province. From Week 1 to 44 of 2021, the cumulative figures for anthrax are 212 cases and 0 deaths. This outbreak started in Week 36 of 2019, affecting mainly Buhera and Gokwe North and South districts but a surge in cases started appearing in week 38 when cases were reported in some other areas. The cumulative figures for anthrax are 747 cases and 3 deaths in 2020. |                        |          |                      |                           |                         |             |                 |        |      |
| Zimbabwe                                                                                                                                                                                                                                                                                                                                                                                                                                                                                                                                                                                                                                                                                                                                                  | COVID-19               | Grade 3  | 20-Mar-20            | 20-Mar-20                 | 28-Nov-21               | 133 991     | 133 991         | 4 705  | 3.5% |
| The first COVID-19 confirmed case was reported in Zimbabwe on 20 March 2020. As of 21 November 2021, a total of 133 991 confirmed COVID-19 cases were reported in the country including 4 705 deaths and 128 655 cases that recovered.                                                                                                                                                                                                                                                                                                                                                                                                                                                                                                                    |                        |          |                      |                           |                         |             |                 |        |      |

†Grading is an internal WHO process, based on the Emergency Response Framework. For further information, please see the Emergency Response Framework: <http://www.who.int/hac/about/erf/en/>.

Data are taken from the most recently available situation reports sent to WHO AFRO. Numbers are subject to change as the situations are dynamic.



© WHO Regional Office for Africa

This is not an official publication of the World Health Organization.

Correspondence on this publication may be directed to:

Dr Mary Stephen

Programme Area Manager, Health Information & Risk Assessment. ai

WHO Emergency Preparedness and Response

WHO Regional Office for Africa

P O Box. 06 Cité du Djoué, Brazzaville, Congo

Email: afrooutbreak@who.int

Requests for permission to reproduce or translate this publication – whether for sale or for non-commercial distribution – should be sent to the same address.

The designations employed and the presentation of the material in this publication do not imply the expression of any opinion whatsoever on the part of the World Health Organization concerning the legal status of any country, territory, city or area or of its authorities, or concerning the delimitation of its frontiers or boundaries. Dotted lines on maps represent approximate borderlines for which there may not yet be full agreement.

All reasonable precautions have been taken by the World Health Organization to verify the information contained in this publication. However, the published material is being distributed without warranty of any kind, either express or implied. The responsibility for the interpretation and use of the material lies with the reader. In no event shall the World Health Organization or its Regional Office for Africa be liable for damages arising from its use.

#### Contributors

Amédée Prosper DJIGUIMDE (Democratic Republic of the Congo)  
Tengomo Gervais FOLEFACK (Democratic Republic of the Congo)  
Joseph WAMALA (South Sudan)  
Jean Bosco NDIHOKUBWAYO (Chad)  
Arsène DAIZO (Chad)

A. Moussongo

#### Editorial Team

M. Stephen  
C. Okot  
V. Mize  
G. Williams  
J. Kimenyi  
E. Kibangou  
O. Ogundiran  
T. Lee  
F. Kambale  
J. Nguna  
R. Mangosa Zaza  
J. Banda Dabwitso

#### Production Team

A. Bukhari  
T. Mlanda  
R. Ngom  
F. Moussana

#### Editorial Advisory Group

Dr. Salam Gueye, *Regional Emergency Director*  
M. Stephen  
A. Talisuna  
A. Fortin

#### Data sources

Data and information is provided by Member States through WHO Country Offices via regular situation reports, teleconferences and email exchanges. Situations are evolving and dynamic therefore numbers stated are subject to change.