

WEEKLY BULLETIN ON OUTBREAKS AND OTHER EMERGENCIES

Week 40: 28 September - 4 October 2020
Data as reported by: 17:00; 4 October 2020



REGIONAL OFFICE FOR **Africa**
WHO Health Emergencies Programme

0

New event

116

Ongoing events

104

Outbreaks

12

Humanitarian
crises



Graded events †

49

Grade 3 events

19

Grade 2 events

2

Grade 1 events

39

Ungraded events

2

Protracted 3 events

2

Protracted 2 events

3

Protracted 1 events

Overview

Contents

- 1 Overview
- 2 - 4 Ongoing events
- 5 Summary of major issues, challenges and proposed actions
- 6 All events currently being monitored

This Weekly Bulletin focuses on public health emergencies occurring in the WHO African Region. The WHO Health Emergencies Programme is currently monitoring 116 events in the region. This week's main articles cover the following events:

- [Coronavirus disease 2019 \(COVID-19\) in Kenya](#)
- [Hepatitis E in Namibia](#)
- [Ebola virus disease \(EVD\) in Équateur Province, Democratic Republic of the Congo.](#)

For each of these events, a brief description, followed by public health measures implemented and an interpretation of the situation is provided.

A table is provided at the end of the bulletin with information on all new and ongoing public health events currently being monitored in the region, as well as recent events that have largely been controlled and thus closed.

Major issues and challenges include:

- Kenya remains among the top ten COVID-19 affected countries in the African Region, albeit with an overall declining trend in new cases and deaths. However, challenges remain around the response, with decreasing attention paid to public health measures by members of the public, inadequate surveillance resources, leading to demotivated responders and issues around access to laboratory commodities and personal protective equipment. All these need to be addressed urgently in order to maintain the momentum of the declining trend in the outbreak.
- The protracted hepatitis E outbreak in Namibia, affecting predominantly informal settlements in urban areas, appears finally to be on a declining trend. However, without fully addressing issues around provision of potable water and improving sanitation and hygiene generally across the regions, the risk for future outbreaks remains. These issues need to be addressed urgently, particularly as resources have been moved away from this outbreak to concentrate on the COVID-19 emergency.
- The EVD outbreak in Équateur Province, Democratic Republic of the Congo, continues to evolve, although there are a relatively small number of new cases and deaths in the region. However, further geographical spread is evident, with new health areas and health zones affected. Challenges remain around known confirmed cases still living in the community and contacts lost to follow-up. Lack of funding for the response continues, with inadequate human resources for risk communication and community engagement in affected health zones and hotspots, two of which border the Republic of Congo. In both Ebola virus disease and COVID-19, there is a need to sustain a strong and robust surveillance system in order to detect, isolate, test and treat new suspected cases as early as possible.

Ongoing events

Coronavirus disease 2019

Kenya

39 427 : 731 : 1.9%
Cases : Deaths : CFR

EVENT DESCRIPTION

Kenya remains among the top 10 most affected countries in the African Region; however, with an overall declining trend in new cases since its peak in week 32 (week ending 8 August 2020). In the 24 hours leading up to 4 October 2020, 243 new confirmed cases were reported, with three new deaths. The counties reporting new cases are Nairobi (70), Nakuru (44), Trana Nzoia (30), Kisumu (15), Mombasa (15), Norok (13), Kiambu (11), Kericho (10), Kakamega (7), Machakos (6), Isiolo (4), Bungoma (3), Kajiado (3), Meru (3), Nandi (3), Uasin Gishu (2), Bomet (1), Kilifi (1), Kirinyaga (1) and Laikipia (1).

The cumulative total number of confirmed COVID-19 cases in Kenya is 39 427, with 731 deaths (case fatality ratio 1.9%). All 47 counties have reported cases, with the highest numbers in Nairobi (20 971) and Mombasa (2 969). Nairobi city and Mombasa county have the highest attack rates in the country, at 476.9 and 245.7 per 100 000 population respectively, compared to a national average of 82.9 per 100 000 population. The total number of recoveries is 26 659, giving a recovery rate of 67.6%.

A total of 1 078 (2.7% of the total) health workers have been infected, with 16 deaths reported from 38 counties.

In the 39 422 cases in which age and sex are known, most (25 550; 65%) are males and 13 872 (35%) are females. The most affected age group is that between 30-39 years. Among the 731 deaths reported, the age group most affected was that over 60 years, of which 239 (33%) were males and 79 (11%) were females.

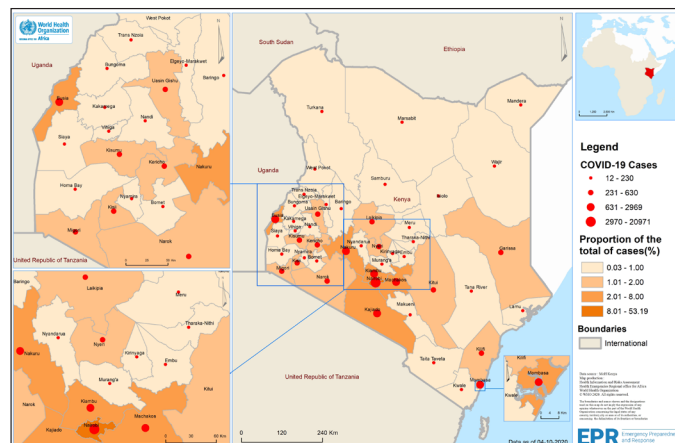
In the past 24 hours, 4 385 samples were tested across various laboratories, bringing the total number of tests to date to 563 483. The current test positivity rate is relatively stable, fluctuating between 4% and 6%, down from a high of 13% in week 30 (week ending 25 July 2020).

Of the 39 427 confirmed COVID-19 cases, 7 647 are pending contact listing. There are currently 4 316 contacts under follow-up.

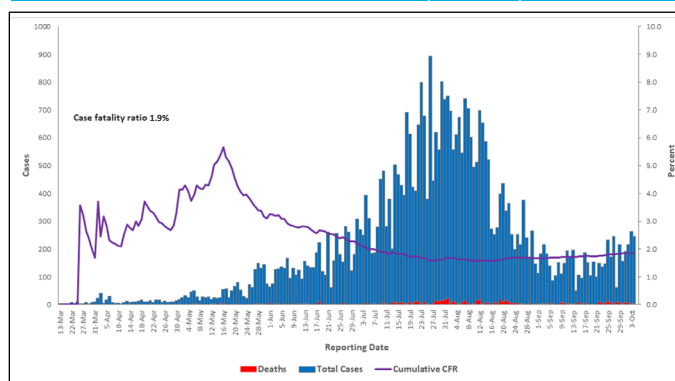
PUBLIC HEALTH ACTIONS

- Coordination meetings at both national and sub-national level are ongoing.
- Training for rapid response teams, contact tracing teams and in the use of integrated data management systems in selected counties starts on 5 October 2020, a joint initiative of the Ministry of Health, County Health Departments and WHO.
- There are currently 19 COVID-19 cases admitted under intensive care, with 22 receiving supplemental oxygen therapy.
- All alerts are being responded to and contact tracing is ongoing in all affected counties.

Geographical distribution of confirmed coronavirus disease 2019 cases and deaths in Kenya, as of 4 October 2020.



The distribution of COVID-19 confirmed cases, deaths with cumulative case fatality ratio for Kenya by reporting date, 13 March – 4 October 2020 ($n=39\,427$)



SITUATION INTERPRETATION

Although, like all countries in the region, the number of cases in Kenya is showing an overall decline, challenges still remain around the COVID-19 response. People are becoming complacent about the epidemic, as seen in laxity in observing public health measures, particularly during political events, in overloaded public transport and in markets across the country. In addition, positive patients under home-based care are not observing quarantine regulations and continue to interact with others. There are ongoing problems with inadequate resources for surveillance, particularly at sub-national level, which is leading to demotivation of responders and there are some difficulties with supply of laboratory commodities and personal protective equipment. These challenges need urgent attention at national and partner level.

EVENT DESCRIPTION

The long-standing hepatitis E outbreak in Namibia, which was declared on 14 December 2017, has been showing a declining trend since week 30 of 2019 (week ending 11 May 2019). Case numbers fluctuated until around week 16 of 2020 (week ending 18 April 2020), since when there has been a fairly steady overall decline. During the period 24 August 2020 to 6 September 2020 a total of 19 hepatitis E cases were reported across the country, compared to 29 cases from 10-23 August 2020. Of the 19 cases reported recently, Erongo region reported the highest number (10; 53%), followed by Otjozondjupa and Khomas (4; 21%) cases each, while Omoheke reported one case (5%). No cases were reported elsewhere in the country.

As of 6 September 2020 a cumulative total of 7 954 hepatitis E cases have been reported, including 2 066 laboratory confirmed, 4 520 epi-linked and 1 368 suspected cases. A total of 2 118 specimens tested negative to date and have been discarded. A total of 65 deaths associated with hepatitis E have been reported nationally, a case fatality ratio of 0.8%. Among these deaths, 26 were in pregnant or peripartum women, representing 40% of the total deaths and 6.1% of all the reported maternal hepatitis E cases. However, the last hepatitis E death was reported on 3 March 2020.

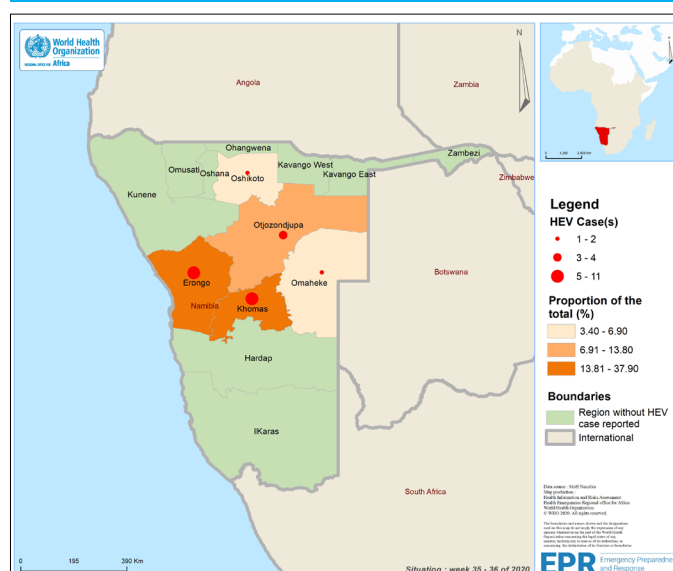
Since the outbreak started, cases have been reported mainly from informal settlements such as Havana and Goreangab in Windhoek, DRC in Swakopmund and Kuisebmund in Walvis bay. Similar settings in other regions are affected, where access to potable water, sanitation and hygiene is limited. Khomas region is the most affected, reporting 62% (4 928 cases), followed by Erongo (1 675; 21%). The remaining areas account for 1 351 (17%) of reported cases. Currently, Omusati region continues to report an increasing number of hepatitis E cases, with a cumulative total of 245 cases since January 2020. During the past eight weeks (from 13 July 2020 to 6 September 2020), Khomas region has reported a total of 52 cases. The most recently affected locations in Khomas region are Havana (16 cases), Okuryangava (8 cases), Goreagab (6 cases) and Hakahana (3 cases). The DRC informal settlement in Swakopmund reported 18 out of the 27 cases in the Erongo region, and so is the most affected residential area in the region.

Most cases (5 681; 71%) are among the age group 20-39 years, with few (15; 0.2%) under one year. Males (4 720; 59%) were more affected than females (3 234; 41%).

PUBLIC HEALTH ACTIONS

- Coordination activities have slowed because attention has been diverted to the COVID-19 outbreak since the declaration of the state of emergency in March 2020.
- Regional and district surveillance teams continue to conduct health education, case tracing and reporting weekly.
- Hepatitis E rapid diagnostic kits (RDT) stocks are currently depleted and procurement is delayed, but the United Nations Development Programme (UNDP) is currently supporting the Ministry of Health and Social Services (MOHSS) to procure further kits.
- Community meeting are being used to sensitize communities around hepatitis E, along with risk communication materials printed in local newspapers and an awareness exercise conducted on World Hepatitis Day on 28 July 2020.

Geographical distribution of confirmed hepatitis E cases in Namibia,
as of 4 October 2020.



- ▶ Water, sanitation and hygiene (WASH) partners (UNDP, UNICEF and MOHSS) are working together to facilitate implementation of community-led total sanitation in Windhoek, to reduce open defecation.
- ▶ All regions have now collected water purification tablets.

SITUATION INTERPRETATION

The decline in incidence cases in the protracted hepatitis E outbreak in Namibia is welcome, but until water, sanitation and hygiene issues across all informal settlements in regions are fully addressed, transmission remains a risk. There are many challenges, including stock outs of RDT kits, regional hepatitis E line-lists not being timeously submitted, data quality issues, including data errors in line lists and incomplete and late submission of situation reports from regions, and inadequate, sustained pro-active interventions from WASH sectors to improve access to safe drinking water and proper sanitation facilities in affected urban informal settlements. These, along with inadequate risk communication strategies to facilitate behaviour change and enforce hygiene and sanitation practices and early health-seeking behaviour, mean that the threat of further outbreaks is always present. These issues need urgent attention from national authorities and partners, particularly in the context of the scaled-down responses as a result of the COVID-19 epidemic.

EVENT DESCRIPTION

The Ebola virus disease (EVD) outbreak in Équateur Province, Democratic Republic of the Congo, continues to evolve, albeit with a slow increase in new cases and deaths. However, there are now 42 health areas affected out of 13 health zones, which indicates further geographical spread. Since our last report (*Weekly Bulletin 39*), there has been one new confirmed EVD case and three new deaths. In the past 21 days (from 13 September to 3 October 2020) there have been four confirmed cases of EVD in four out of 42 health areas in three out of 13 affected health zones.

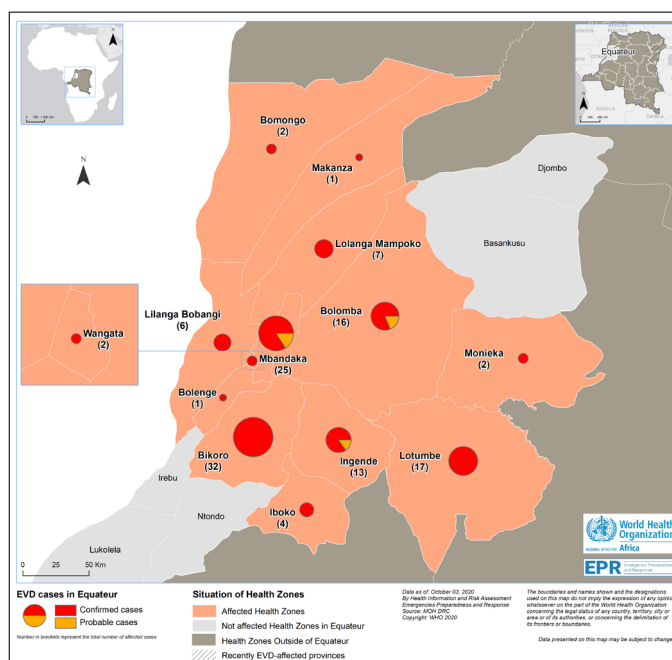
As of 3 October 2020, the cumulative total of EVD cases is 128 (119 confirmed and nine probable) including 53 deaths (case fatality ratio 41.4%). The case fatality ratio among confirmed cases 37.0% (44 deaths/119 confirmed cases). The number of health workers affected remains at three, making up 2.3% of all cases.

A total of 35 new contacts were listed on 3 October 2020. Out of 698 active contacts, 633 (90.7%) have been followed-up. Of the 52 contacts who were not seen, 36 (69.2%) have never been seen, three (5.8%) were lost to follow-up and 13 (25%) were not seen in the previous 24 hours. Ten contacts became symptomatic, six in Lotumbe, and four in Ingende. A total of 813 new alerts (including 20 deaths) were reported in 12 health zones. Of the 865 alerts recorded to date 829 (95.8%) were investigated and 80 (36.4%) were validated.

PUBLIC HEALTH ACTIONS

- On 3 October 2020, 36/51 active Points of Control (POCs) reported. A total of 49 588 travellers passed through these PoCs and 46 847 (94.5%) were screened. Since the start of the response activities, 1 663 093 (92.4%) screenings have been performed among the 1 800 330 travellers who have passed through the active PoCs. Out of these 193 alerts have been detected, with 101 validated.
- As of 3 October 2020, 66 samples were received in five operational laboratories. Since the start of the outbreak a total of 9 302 samples have been tested.
- A total of 244 new people were vaccinated with rVSV-ZEBOV-GP on 3 October 2020, in seven rings, including 57 contacts-of-contacts, ten high risk contacts, and 177 probable contacts; these figures include 165 first line providers.
- Since 5 June 2020, a total of 34 897 people has been vaccinated.
- A total of 41 patients, with one confirmed, were managed in the transit centres and Ebola treatment centres in affected areas as of 3 October 2020.
- Since the start of specific EVD therapy, 31 (39.7%) confirmed patients have been treated with this.
- Seven confirmed cases of EVD remain in the community, including four in Lotumbe, two in Lolanga Mampoko and one in Mbandaka.
- On 3 October 2020 there were 21 community death alerts in Bikoro (1), Bolenge (2), Bolomba (3), Iboko (2), Ingende (2), Lilanga Bobangi (2), Lotumbe (3), Makanza (2) and Wangata (3). Only eight samples were taken with only three secure and dignified burials carried out.
- On 3 October 2020, construction started on a borehole at the general reference hospital in Lotumbe; in Makanza, 17 nurses were briefed in IPC precautions and one health facility and one household were decontaminated; IPC/WASH kits have been provided in Bomongo health zone, while the team in charge of safe and dignified burials

Geographical distribution of confirmed Ebola virus disease cases reported from 3 October 2020, Équateur Province, Democratic Republic of the Congo



were briefed on injection safety, swabs and donning and doffing of personal protective equipment. IPC capacity was assessed in seven health facilities in affected health zones.

- Risk communication, mobilization and community engagement continues, with awareness raising activities around the recent confirmed case of EVD in Makanza Health Zone, focusing on signs and preventive measures; sensitization activities were discussed with religious leaders from the same health zone. In Bomongo, mass sensitization on EVD and COVID-19 was carried out by the administrator of the territory. Household visits continue, along with awareness activities by community relays, Red Cross volunteers and Community Action Cells.

SITUATION INTERPRETATION

The EVD outbreak in this area of Democratic Republic of the Congo continues, although at a relatively slow rate. There are still contacts lost to follow up, confirmed cases still remain in the community and safe and dignified burials continue to be a challenge. Funding remains inadequate, community resistance continues, as well as the problem of inadequate laboratory reagents and commodities. Continued advocacy is required with donors and funding agencies to strengthen response activities. EVD awareness activities are taking place in tandem with COVID-19 response activities, which is to be commended, and which will hopefully continue, to help to break the stigma associated with both diseases.

Summary of major issues, challenges and proposed actions

Major issues and challenges

- As in the rest of the region, Kenya continues to see a decline in new COVID-19 cases and deaths, which is to be welcomed, as the country is among the top 10 affected. However, the continuing challenges around lack of adherence to public health measures, people ignoring quarantine regulations and inadequate resources for surveillance, particularly at the sub-national level, threaten this trend.
- The protracted hepatitis E outbreak in informal settlements in Namibia is showing a strong decline. However, diversion of response resources to COVID-19, lack of RDT kits and poor response to provision of potable water and other aspects of water, sanitation and hygiene leave these areas vulnerable to further outbreaks.
- The Ebola virus disease outbreak in Équateur Province, Democratic Republic of the Congo, appears to have slowed, with few new confirmed cases and deaths reported recently. However, while there are still confirmed cases at large in the community and difficulties with safe and dignified burials, transmission risks remain. Challenges remain around inadequate funding and personnel for the response, particularly in hotspot areas, and problems with screening at points of control.

Proposed actions

- Kenya needs to strengthen surveillance, particularly at sub-national level and improve risk communication around adherence to public health measures and quarantine regulations in order to maintain the declining trend in new COVID-19 cases.
- Namibia needs urgently to address water, sanitation and hygiene issues across all informal settlements, along with improving procurement of RDT kit stocks and also data management processes. In addition, the COVID-19 response needs to be inclusive of other public health events in the country, to prevent lack of resources for response to outbreaks such as hepatitis E, which has the potential to surge again without adequate monitoring and response.
- Even though the Ebola virus disease outbreak appears to be slowing, robust response activities are still required, particularly around positive cases at large in the community and challenges around safe and dignified burials. The response to EVD should be linked to existing COVID-19 activities in order to use resources efficiently. These efforts should be encouraged and supported nationally and by partners.

All events currently being monitored by WHO AFRO

Country	Event	Grade	Date notified to WCO	Start of reporting period	End of reporting period	Total cases	Cases Confirmed	Deaths	CFR
Ongoing Events									
Algeria	COVID-19	Grade 3	25-Feb-20	25-Feb-20	04-Oct-20	52 136	52 136	1 760	3.4%
From 25 February to 4 October 2020, a total of 52 136 confirmed cases of COVID-19 with 1 760 deaths (CFR 3.4%) have been reported from Algeria. A total of 36 578 cases have recovered. The majority of the cases have been reported from the Wilaya of Blida.									
Angola	COVID-19	Grade 3	21-Mar-20	21-Mar-20	03-Oct-20	5 370	5 370	185	3.4%
The first COVID-19 confirmed case was reported in Angola on 21 March 2020. As of 3 October 2020, a total of 5 370 confirmed COVID-19 case have been reported in the country with 185 deaths and 2 429 recoveries.									
Angola	Measles	Ungraded	4-May-19	12-Dec-2019	16-Sep-20	1 252	1 025	5	0.4%
From 1 January 2020 to 16 September 2020, Angola reported a total measles suspected case count of 1 252 from 56 districts in 15 provinces, mostly from Luanda Province. There are 1 025 confirmed measles (lab and epi-link). There were a total of 5 deaths reported from 1 January to 1 July in 14 provinces across Angola; there is no further information regarding deaths for this current period. 80% of the confirmed cases are <5 years of age; 14% are aged 5-9 years; 3% are 10-14 years of age. 15 out of 18 provinces are affected. The most affected provinces are Cabinda, Malanje, Bie, Luanda, Huambo and Uige.									
Angola	Poliomyelitis (cVDPV2)	Grade 2	8-May-19	01-Jan-19	23-Sep-20	133	133	0	0.0%
No case of circulating vaccine-derived poliovirus type 2 (cVDPV2) was reported this week. There have been three cases reported in 2020 so far. The total number of 2019 cases remain 130. These cases are from several outbreaks which occurred in 2019.									
Benin	Cholera	Ungraded		17-Aug-20	06-Sep-20	196	1	5	2.6%
As of Week 36, Benin reported a total of 196 suspected cases of cholera. There is only 1 culture confirmed case and 5 deaths reported for 2020.									
Benin	COVID-19	Grade 3	17-Mar-20	16-Mar-20	29-Sep-20	2 357	2 357	41	1.7%
The Ministry of Health in Benin announced the first confirmed case of COVID-19 on 16 March 2020. As of 29 September 2020, a total of 2 357 cases have been reported in the country with 41 deaths and 1 973 recoveries.									
Benin	Poliomyelitis (cVDPV2)	Grade 2	08-Aug-19	08-Aug-19	23-Sep-20	10	10	0	0.0%
No case of circulating vaccine-derived poliovirus type 2 (cVDPV2) was reported this week. Two cases have been reported in 2020, with 8 cases reported in 2019. These cases are all linked to the Jigawa outbreak in Nigeria.									
Botswana	COVID-19	Grade 3	30-Mar-20	28-Mar-20	28-Sep-20	3 172	3 172	16	0.5%
On 30 March 2020, the Minister of Health and Wellness in Botswana reported three confirmed cases of COVID-19. As of 28 September 2020, a total of 3 172 confirmed COVID-19 cases were reported in the country including 16 deaths and 710 recovered cases.									
Burkina Faso	Humanitarian crisis	Grade 2	01-Jan-19	01-Jan-19	31-Jul-20	-	-	-	-
Since 2015, the security situation in the Sahel and the East of Burkina Faso has gradually deteriorated as a result of attacks by armed groups. This has resulted in mass displacement leading to a total of 978 744 internally displaced persons registered as of 31 July 2020 in all 13 regions in the country. The presence of jihadist groups and self-defence units have created an increasingly volatile security situation. Humanitarian access is restricted in Sahel, North, Centre-North and East regions, while IDP numbers are rising, along with protection concerns. From January to the end of July 2020, a cumulative number of 1 217 security incidents were reported, 19 of which were directed against humanitarian actors. Health services are severely affected.									
Burkina Faso	COVID-19	Grade 3	10-Mar-20	09-Mar-20	02-Oct-20	2 154	2 154	59	2.7%
Between 9 March and 2 October 2020, a total of 2 154 confirmed cases of COVID-19 with 59 deaths and 1 397 recoveries have been reported from Burkina Faso.									
Burkina Faso	Poliomyelitis (cVDPV2)	Grade 2		01-Jan-19	23-Sep-20	10	10	0	0.0%
No case of circulating vaccine-derived poliovirus type 2 (cVDPV2) was reported this week. A total of 10 cases of circulating vaccine-derived poliovirus have been reported from Benin since 2019 with no new cases reported in 2020. The last case had onset of paralysis on 10 May 2020. All cases were linked to the Jigawa outbreak in Nigeria.									
Burundi	COVID-19	Grade 3	31-Mar-20	18-Mar-20	04-Oct-20	514	514	1	0.2%
On 31 March 2020, the Minister of Health in Burundi reported the first two confirmed cases of COVID-19. As of 4 October 2020, the total confirmed COVID-19 cases is 514, including one death and 494 recovered.									
Burundi	Measles	Ungraded	23-Mar-20	04-Nov-19	09-Aug-20	989	989	0	0.0%
Burundi has been experiencing measles outbreaks since November 2019 in camps hosting Congolese refugees and the disease has recently been spreading in the host community in the district of Cibofoke. As of 9 August 2020, Burundi has reported a total of 989 confirmed measles cases of which 154 are lab-confirmed and the rest were clinically compatible cases and epidemically linked. The current outbreak is affecting the following districts: Bukinanyana (Cibitoke province), Ngozi (Ngozi province), Bujumbura Nord (Bujumbura province). There have been no deaths reported.									

Country	Event	Grade	Date notified to WCO	Start of reporting period	End of reporting period	Total cases	Cases Confirmed	Deaths	CFR
Cameroon	Humanitarian crisis (Far North, North, Adamawa & East)	Protracted 2	31-Dec-13	27-Jun-17	18-Aug-20	-	-	-	-
Cameroon continues to face a humanitarian crisis in the Far North Region linked to the terrorist attacks by the Boko Haram group resulting in significant population displacement. More than 6 000 internally displaced people, refugees and host communities reportedly left their homes in and around Kordo and Gadero in Cameroon's Far-North to seek protection and refuge in the Kolofata district last week. It is alleged that this pre-emptive displacement of people followed the dismantling and subsequent relocation of military outposts from Kordo and Gadero to Grea last week. Since the beginning of the humanitarian crisis in 2014, more than 500 000 people were displaced in Cameroon's Far-North according to latest figures available from OCHA (July 2020). The Minawao Refugee Camp in the Mokolo Health District continues to host Nigerian refugees, with spontaneous refugee arrivals being recorded.									
Cameroon	Humanitarian crisis (NW & SW)	Grade 2	01-Oct-16	27-Jun-18	11-Aug-20	-	-	-	-
The humanitarian situation in the Northwest and Southwest (NW & SW) regions of Cameroon continues to deteriorate with rising tensions between separatists and military forces despite calls for a COVID-19 ceasefire by the UN Secretary General. Attacks against aid workers are increasing. On 17 June 2020, an attempted abduction of NGO workers in Fon Baba, followed by the killing of an MSF aid worker in Kumba on 10 July 2020 were reported. On 7 August 2020, an aid worker with the Community Initiative for Sustainable Development (COMINSUD) in Batibo Subdivision (Northwest region) was kidnapped and killed by unidentified individuals. Shelter, NFI (non-food items), protection and food continue to be the most urgent needs of the displaced populations.									
Cameroon	Cholera	Ungraded	01-Mar-19	01-Jan-20	03-Jul-20	980	39	45	4.6%
A cholera outbreak is ongoing in Cameroon, affecting four regions, namely Littoral, Southwest, South and Centre regions. A total of 73 new suspected cholera cases and 6 new deaths were reported in South region (71 suspected cases and 4 deaths) and Centre region (2 suspected cases and 2 deaths) from 19 June to 2 July 2020. Since the beginning of this outbreak in January to 3 July 2020, a total of 980 cases, including 39 confirmed cases and 45 deaths (29 in hospitals and 16 in the community; CFR 4.6%) were reported in four regions. The majority of cases were reported in the Littoral region (563 suspected cases and 30 deaths), followed by the South region (344 suspected cases and 12 deaths). In 2019, only the Far North, North and Southwest regions were affected by the cholera outbreak.									
Cameroon	COVID-19	Grade 3	06-Mar-20	06-Mar-20	27-Sep-20	20 875	20 875	418	2.0%
The Cameroon Ministry of Health announced the confirmation of the first COVID-19 case on 6 March 2020. As of 27 September 2020, a total of 20 875 cases have been reported, including 418 deaths and 19 523 recoveries.									
Cameroon	Measles	Ungraded	2-Apr-19	01-Jan-20	9-Aug-20	1 423	1 423	13	0%
The measles outbreak is improving in Cameroon. Since 1 January 2020 to date, a total of 1 423 confirmed cases and 13 deaths have been reported in the country. Twenty-nine out of 79 health districts that were affected have not reported cases in the last four epidemiological weeks. A total of 13 deaths were reported to date in six districts, namely Kribi (4 cases), Gashiga (2 cases), Betaré Oya (1 case), Kolofata (2 cases), Awae (1 case), Ngaoundal (1 case), Ngong (1 case), Guidiguiguis (1 case). Fifty percent of cases are aged between 9 to 59 months.									
Cameroon	Poliomyelitis (cVDPV2)	Grade 2	01-Jan-20	01-Jan-20	23-Sep-20	4	4	0	0.0%
One cVDPV2 positive environmental sample was reported in Sud province. Four cVDPV2 cases have been reported from the country so far in 2020.									
Cape Verde	COVID-19	Grade 3	19-Mar-20	18-Mar-20	04-Oct-20	6 360	6 360	65	1.0%
The first COVID-19 confirmed case was reported in Cape Verde on 19 March 2020. As of 04 October 2020, a total of 6 360 confirmed COVID-19 cases including 65 deaths and 5 416 recoveries were reported in the country.									
Central African Republic	Humanitarian crisis	Protracted 2	11-Dec-13	11-Dec-13	4-Aug-20	-	-	-	-
Civil unrest and food insecurity in most parts of the country, including major cities, continue to cause a complex humanitarian situation. The security situation remains tense with the persistence of inter-ethnic tensions within rival armed groups in the Northeast of the country, mainly in Ndele, Birao, Batangafo and Bri. In the first half of 2020, 192 incidents affecting humanitarian workers were recorded, including 2 deaths and 17 injured. Around 659 000 people are internally displaced in Central Africa.									
Central African Republic	COVID-19	Grade 3	14-Mar-20	14-Mar-20	29-Sep-20	4 845	4 845	62	1.3%
The Ministry of Health and population announced the confirmation of the first COVID-19 case in the Central African Republic on 14 March 2020. As of 29 September 2020, there are a total of 4 845 confirmed cases, 62 deaths, and 1 915 recoveries reported.									
Central African Republic	Measles	Grade 2	15-Mar-19	01-Jan-19	16-Sep-20	28 318	443	135	0.5%
As of 16 September 2020, a total of 28 318 suspected cases have been notified and 135 deaths within 21 affected districts. The majority of cases are under five years of age. Response activities are ongoing in the affected health districts.									
Central African Republic	Poliomyelitis (cVDPV2)	Grade 2	24-May-19	24-May-19	23-Sep-20	23	23	0	0.0%
No case of cVDPV2 case was reported this week. There have been 2 cases reported in 2020 so far and 21 cases in 2019 from several outbreaks giving a total of 23 cases.									

Country	Event	Grade	Date notified to WCO	Start of reporting period	End of reporting period	Total cases	Cases Confirmed	Deaths	CFR
Chad	Chikungunya	Grade 1	27-Aug-20	28-Aug-20	03-Oct-20	34 445	22	1	0.0%
From 14 August to 3 October 2020, there have been 34 445 cases of Chikungunya recorded and 1 death. The age range most affected is 15 years of age and older, and females are more affected than males. Cases have been confirmed in health districts of Abéché (Ouaddai Province), Biltine (Wadi Fira Province), and d'Abdi, Gozbeida (Sila Province). More than three quarters of patients develop severe fevers, headaches, excruciating and disabling joint pain; a third of these patients developed pruritic maculopapular rashes.									
Chad	COVID-19	Grade 3	19-Mar-20	19-Mar-20	04-Oct-20	1 217	1 217	86	7.1%
The first COVID-19 confirmed case was reported in Chad on 19 March 2020. As of 4 October 2020, a total of 1 217 confirmed COVID-19 cases were reported in the country including 86 deaths and 1 075 cases who have recovered.									
Chad	Measles	Ungraded	24-May-18	01-Jan-19	16-Aug-20	8 494	357	39	0.5%
In week 33 (week ending 16 August 2020), 11 suspected cases were reported. No districts were in the epidemic phase during the week. Since the beginning of the year, a total of 8 494 suspected cases and 39 deaths (CFR 0.5%) have been reported from Beboto, Kyabe, Goundi, Korbol, Kelo and Guelao.									
Chad	Poliomyelitis (cVDPV2)	Grade 2	18-Oct-19	09-Sep-19	23-Sep-20	77	77	0	0.0%
Three cVDPV2 cases were reported; two in Logone Oriental and one in Mayo Kebbi Est. There are now 66 cases from two different outbreaks in the country, one being the Jigawa outbreak. There were 11 cases reported in 2019.									
Comoros	COVID-19	Grade 3	30-Apr-20	30-Apr-20	04-Oct-20	487	487	7	1.4%
The first case of confirmed COVID-19 was notified on 30 April 2020 in Comoros. As of 4 October 2020, a total of 487 confirmed COVID-19 cases, including 7 deaths and 466 recoveries were reported in the country.									
Congo	Chikungunya	Grade 1	22-Jan-19	01-Jan-20	2-Aug-20	71	0	0	0.0%
No suspected case of chikungunya was reported in week 31 (week ending 2 August 2020). From week 1 to week 31, 71 cases with no deaths were reported in six departments: Kouilou (31 cases), Bouenza (8 cases), Brazzaville (9 cases), Lekoumou (1 case), Plateau (13 cases) and Pool (9 cases). From weeks 1 to 52 of 2019, a total of 11 600 cases have been reported in 44 out of the 52 health districts in 10 out of 12 departments. The departments of Bouenza (3 102 cases), Kouilou (2 844 cases) and Niari (2 589) were the most affected by the outbreak accounting for 74% of cases reported since the beginning of the outbreak.									
Congo	COVID-19	Grade 3	14-Mar-20	14-Mar-20	25-Sep-20	5 089	5 089	89	1.7%
The Government of Congo announced the confirmation of the first case of COVID-19 in Congo on 14 March 2020. As of 25 September 2020, a total of 5 089 cases including 89 deaths and 3 995 recovered cases have been reported in the country.									
Côte d'Ivoire	COVID-19	Grade 3	11-Mar-20	11-Mar-20	03-Oct-20	19 849	19 849	120	0.6%
Since 11 March 2020, as of 3 October 2020, 19 849 confirmed cases of COVID-19 have been reported from Côte d'Ivoire including 120 deaths, and a total of 19 421 patients have recovered.									
Côte d'Ivoire	Poliomyelitis (cVDPV2)	Grade 2	29-Oct-19	29-Oct-19	17-Sep-20	29	29	0	0.0%
No case of circulating vaccine-derived poliovirus type 2 (cVDPV2) was reported this week. The total number of cVDPV2 cases reported is 29.									
Democratic Republic of the Congo	Humanitarian crisis	Grade 3	20-Dec-16	17-Apr-17	21-Jun-20	-	-	-	-
The Democratic Republic of the Congo continues to experience a complex humanitarian crisis involving armed conflicts and inter-community tension resulting in large numbers of people in need of humanitarian assistance. Population movement due to armed clashes and inter-community fighting continues to be reported in North-Kivu, Tanganyika, Ituri, Kasai Central and South-Kivu provinces. In Ituri, following an attack by alleged members of the Allied Democratic Forces (ADF) in the locality of Bwakadi in the ZS of Boga (Territory Irumu), which cost the lives of two civilians on 24 June 2020, the populations of several villages (Bwakadi, Sikwaela, Bhelu, Vukaka, etc.) have been displaced to Kinyanjono, Malaya, Kyabaganzi and Izanga in the same territory and in Idohu, in the health zone of Komanda. In Tanganyika province, following the cross-border conflict between the DRC and Zambia, the territory of Moba, has been experiencing population displacement since March 13 2020. In North Kivu, a total of 14 000 internally displaced people and around 4 000 returnees have arrived in the Kelembe / Kalonge-Mera-Peti axis in the east of Walikale territory between April and May 2020. In South Kivu province, heavy rains that resulted in floods in Uvira were reported from 16 to 17 April 2020. A total of 50 deaths and 40 wounded persons, and many houses destroyed, were reported and currently there is a total of 78 000 persons displaced, including 3 500 persons without shelters. Floods were reported also in the city of Kasindi and its surroundings in North Kivu between 20 and 21 May 2020. The displaced persons are in need of basic humanitarian assistance, including access to food, clean water, non-food items, shelters and health care assistance.									
Democratic Republic of the Congo	Cholera	Grade 3	16-Jan-15	01-Jan-20	9-Aug-20	13 421	-	190	1.4%
The cholera outbreak in the Democratic Republic of Congo is improving. During week 32 (week ending 9 August 2020), a total of 246 cases of cholera and 2 deaths were notified in 26 health zones (7 provinces) in the country. From week 29 to 32 of 2020, 81.5% of the cases have been reported from two provinces: North-Kivu and South-Kivu. Between week 1 and week 52 of 2019, a total of 30 304 cases including 514 deaths (CFR 1.7%) were notified from 23 out of 26 provinces.									
Democratic Republic of the Congo	COVID-19	Grade 3	10-Mar-20	10-Mar-20	03-Oct-20	10 760	10 759	274	2.5%
On 10 March, the Minister of Health announced the presence of the first confirmed COVID-19 case in Kinshasa. As of 3 October 2020, 10 759 confirmed cases and 1 probable case have been reported, for a total of 10 760 cases, including 274 deaths and 10 237 recoveries.									
Democratic Republic of the Congo	Ebola virus disease	Grade 2	31-May-20	17-May-20	29-Aug-20	109	103	47	43.1%
Detailed update given above.									

Country	Event	Grade	Date notified to WCO	Start of reporting period	End of reporting period	Total cases	Cases Confirmed	Deaths	CFR
Democratic Republic of the Congo	Measles	Grade 2	10-Jan-17	01-Jan-20	06-Sep-20	70 899	1 317	1 026	1.4%
The ongoing measles outbreak in Democratic Republic of the Congo is showing a sustained decline in new cases and deaths, which started in week 49 of 2019 (week ending 4 December 2019), continued to week 6 of 2020 (week ending 8 February 2020), followed by a slight increase from weeks 11-13 (week ending 28 March 2020) with a declining trend thereafter. From 1 January 2020 to 6 September 2020, 70 899 suspected cases have been reported, including 1 026 deaths (case fatality ratio 1.4%). This is a decrease compared to the same period in 2019, when there were 184 289 suspected cases and 3 650 deaths reported.									
Democratic Republic of the Congo	Monkeypox	Ungraded	n/a	01-Jan-20	13-Sep-20	4 594	39	171	3.7%
During week 32 (week ending 13 August 2020), a total of 189 suspected cases of monkeypox with seven deaths were reported across the country compared to 258 cases the preceding week. Between week 1 and week 37, a total of 4 594 suspected cases including 171 deaths (CFR 3.7%) were reported in 127 health zones from 17 out of 26 provinces in the country. During the same period in 2019, 3 794 suspected cases and 73 deaths (CFR 1.9%) were reported in 120 health zones from 16 provinces while a total of 2 850 suspected cases (CFR 2.1%) were reported in 2018. One major challenge to the current emergency includes acquiring the required funding to respond to all the multiple ongoing outbreaks in the country.									
Democratic Republic of the Congo	Plague	Ungraded	12-Mar-19	01-Jan-20	9-Aug-20	91	-	17	18.7%
Ituri province has notified an upsurge of plague cases in the health zone of Rethy. From 11 June to 9 August 2020, a total of 73 cases with 10 deaths (CFR 13.6%) were notified in 5 out of 22 health areas of Rethy health zone. Plague is endemic in Ituri province. Since the beginning of 2020 to date, Ituri Province has reported a total of 91 cases and 17 deaths (CFR 18.7%) in 5 health zones, namely Aungba, Linga, Rethy, Aru, Logo and Kambala. In 2019, from week 1 to 52, a total of 48 cases of bubonic plague including eight deaths have been reported in the country.									
Democratic Republic of the Congo	Poliomyelitis (cVDPV2)	Grade 2	15-Feb-18	01-Jan-18	23-Sep-20	158	158	0	0.0%
No case of circulating vaccine-derived poliovirus type 2 (cVDPV2) was reported this week. The total number of cases reported in 2020 is 50, while the 2019 case count remains 88. There were 20 cases reported in 2018. The country continues to be affected by several other genetically-distinct cVDPV2s (notably in Kasai, Kwilu, Kwango and Sankuru provinces).									
Equatorial Guinea	COVID-19	Grade 3	14-Mar-20	14-Mar-20	01-Oct-20	5 045	5 045	83	1.6%
The Ministry of Health and Welfare announced the first confirmed COVID-19 case on 14 March 2020. As of 1 October 2020, a total of 5 045 cases have been reported in the country with 83 deaths and 4 879 recoveries.									
Eritrea	COVID-19	Grade 3	21-Mar-20	21-Mar-20	03-Oct-20	398	398	0	0.0%
The first COVID-19 confirmed case was reported in Eritrea on 21 March 2020. As of 3 October 2020, a total of 398 confirmed COVID-19 cases with no deaths were reported in the country. A total of 358 patients have recovered from the disease.									
Eswatini	COVID-19	Grade 3	13-Mar-20	13-Mar-20	04-Oct-20	5 569	5 569	111	2.0%
The first case of COVID-19 was confirmed in the kingdom of Eswatini on 13 March 2020. As of 4 October 2020, a total of 5 569 cases have been reported in the country including 9 429 recoveries. A total of 111 associated deaths have been reported.									
Ethiopia	Cholera	Ungraded	14-May-19	12-May-19	06-Sep-20	14 728		257	1.7%
In week 36 (week ending 6 September 2020), 171 new suspected cases with one associated death were reported. Since the beginning of the year, a total of 14 728 cases with 257 associated deaths have been reported from 12 woredas in Sidama, SNNP and Oromia regions.									
Ethiopia	COVID-19	Grade 3	13-Mar-20	13-Mar-20	04-Oct-20	78 819	78 819	1 222	-
Since the confirmation of the first case on 13 March 2020, Ethiopia has confirmed a total of 78 819 cases of COVID-19 as of 4 October 2020, 1 222 deaths and 33 060 recoveries have been reported.									
Ethiopia	Measles	Ungraded	14-Jan-17	01-Jan-19	26-Apr-20	1 873		-	-
In week 17 (week ending 26 April 2020), the measles outbreak is still ongoing in Oromia, Amhara and Tigray regions. A total of 575 suspected cases and 7 deaths were reported during the week with the majority of suspected cases being reported from Oromia region.									
Ethiopia	Poliomyelitis (cVDPV2)	Grade 2	24-Jun-19	20-May-19	23-Sep-20	29	29	0	0.0%
No cVDPV2 cases were reported this week. So far, there have been 29 cases reported in Ethiopia.									
Gabon	COVID-19	Grade 3	12-Mar-20	12-Mar-20	04-Oct-20	8 797	8 797	54	0.6%
On 12 March 2020, the Ministry of Health announced the confirmation of the first COVID-19 case in the country. As of 4 October 2020, a total of 8 797 cases including 54 deaths and 8 067 recovered have been reported in the country.									
Gabon	Yellow Fever	Ungraded	15-Apr-20	15-Apr-20	19-Sep-20	1	1	1	100.0%
One isolated yellow fever case from Tchibanga District (Nyanga Province) was notified on 3 February 2020 and confirmed on 14 April 2020 by Institut Pasteur of Dakar. The patient died on 15 April 2020.									
Gambia	COVID-19	Grade 3	17-Mar-20	17-Mar-20	02-Oct-20	3 594	3 594	115	3.2%
The first COVID-19 confirmed case was reported in the Gambia on 17 March 2020. As of 2 October 2020, a total of 3 594 confirmed COVID-19 cases including 115 deaths and 2 226 recoveries have been reported in the country.									

Country	Event	Grade	Date notified to WCO	Start of reporting period	End of reporting period	Total cases	Cases Confirmed	Deaths	CFR
Ghana	COVID-19	Grade 3	12-Mar-20	12-Mar-20	01-Oct-20	46 829	46 829	303	0.6%
On 12 March 2020, the Ministry of Health announced two confirmed COVID-19 cases in the country. As of 1 October 2020, a total of 46 829 cases including 303 deaths and 46 060 recoveries have been reported in the country.									
Ghana	Poliomyelitis (cVDPV2)	Grade 2	09-Jul-19	08-Jul-19	23-Sep-20	29	29	0	0.0%
No cVDPV2 cases were reported this week. So far, there have been 11 cases reported in 2020, while the total number of 2019 cases remains 18.									
Guinea	COVID-19	Grade 3	13-Mar-20	13-Mar-20	04-Oct-20	10 754	10 754	66	0.6%
The Ministry of Health in Guinea announced the first confirmed case of COVID-19 on 13 March 2020. As of 4 October 2020, a total of 10 754 cases including 10 098 recovered cases and 66 deaths have been reported in the country.									
Guinea	Lassa Fever	Ungraded	11-Jul-20	11-Jul-20	4-Aug-20	1	1	1	100.0%
A case of Lassa fever was confirmed on 11 July 2020 by the Haemorrhagic Fever laboratory in Guéckédou. The case patient is a 28-year-old, female, 22 weeks of pregnancy, living in the village of Kondian, in the rural district of Koundou Lengo Bengou. She fell ill on 07 June 2020 with chest pain and no history of travel or being in contact with a foreigner a month before her illness. She consulted at Koundou health centre on 10 July 2020, with fever, cough, myalgia, diarrhoea, vomiting, sore throat, and chest pain. The malaria RDT performed was positive. She was treated for malaria and transferred to Guéckédou hospital the same day, where the diagnosis of haemorrhagic fever was made. A diagnostic test for haemorrhagic fever performed at the Haemorrhagic Fever laboratory in Guéckédou was positive for lassa fever. The patient died the next day. A dignified and secure burial was carried out by the Red Cross on 12 July 2020.									
Guinea	Measles	Ungraded	09-May-18	01-Jan-19	05-Jun-20	5 644	366	14	0.3%
During week 23 (week ending in 5 June) there has been a total of 5 644 cases with 366 confirmed and 14 deaths in 2020. During week 44 (week ending 3 November 2019), 127 suspected cases of measles were reported. From week 1 to 44 (1 January - 3 November 2019), a total of 4 690 suspected cases including 18 deaths (CFR 0.4%) have been reported. Of the 4 690 suspected cases, 1 773 were sampled, of which 1 091 tested positive for measles by serology. Three localities in three health districts are in the epidemic phase, namely, Wanindara in Ratoma health district, Dounet in Mamou health district and Soumpoura in Tougue health district.									
Guinea	Poliomyelitis (cVDPV2)	Grade 2	22-Jul-20	22-Jul-20	23-Sep-20	11	11	0	0.0%
Three cVDPV2 cases were reported; two in Kankan and one in N'zerekore. There are now 11 cVDPV2 cases in the country. Previously, 8 cVDPV2 cases were reported in Kankan province making them the first in the country. On 22 July 2020, WHO was notified by the Global Polio Laboratory Network of cases of circulating vaccine-derived poliovirus type 2 (cVDPV2) from Guinea. These viruses were isolated from five acute flaccid paralysis (AFP) cases with onsets of paralysis between 22 March and 28 May 2020, from two separate districts in Kankan province (Kankan district, Mandiana district).									
Guinea-Bissau	COVID-19	Grade 3	25-Mar-20	25-Mar-20	28-Sep-20	2 362	2 362	39	1.7%
On 25 March 2020, the Ministry of Health of Guinea Bissau reported the first COVID-19 confirmed case in the country. As of 28 September 2020, the country has reported 2 362 confirmed cases of COVID-19 with 1 638 recoveries and 39 deaths.									
Kenya	Cholera	Ungraded	21-Jan-19	01-Jan-20	28-Aug-20	711	27	13	1.8%
The outbreak is currently active in Garissa and Turkana counties. A cholera outbreak has been reported in five counties; Garissa, Wajir, Turkana, Murang'a and Marsabit since the beginning of 2020. Cumulative cases are 711 with 13 deaths (CFR 1.9%). The Wajir, Murang'a, Marsabit and Garissa outbreaks are now controlled. The outbreak is active in Turkana County. Turkana County is reporting the fourth wave of the outbreak this year, with 42 cases, so far and a total of 279 cases with 1 death (CFR 0.4%).									
Kenya	COVID-19	Grade 3	13-Mar-20	13-Mar-20	04-Oct-20	39 427	39 427	731	1.9%
Detailed update give above.									
Kenya	Leishmaniasis	Ungraded	31-Mar-19	03-Jan-20	15-Sep-20	293	272	7	2.4%
Since 1 January 2020, a total of 293 (suspected and confirmed) visceral leishmaniasis cases have been reported in Marsabit, Garissa, Kitui and Baringo Counties. No new cases were reported in the past week in any affected counties.									
Kenya	Measles	Ungraded	06-May-19	20-Oct-19	15-Sep-20	529	49	2	0.4%
As of 15 September 2020, a total of 529 measles cases including 49 confirmed cases and 2 deaths have been reported in Pokot North sub county, West Pokot county since 20 October 2019. The outbreak is active in five counties; West Pokot, Garissa, Wajir, Tana River and Kilifi.									
Lesotho	COVID-19	Grade 3	13-May-20	13-May-20	01-Oct-20	1 639	1 639	38	2.3%
On 13 May 2020, WHO was notified of the first confirmed COVID-19 case in Lesotho. As of 1 October 2020, 1 639 cases of COVID-19 have been reported, including 874 recoveries and 38 deaths.									
Liberia	COVID-19	Grade 3	16-Mar-20	16-Mar-20	03-Oct-20	1 348	1 348	82	6.1%
From 16 March to 3 October 2020, a total of 1 348 cases including 82 deaths and 1 236 recoveries have been reported from all 15 counties of Liberia. Montserrado County, which hosts the country's capital city, remains at the epicenter of the outbreak.									
Liberia	Lassa fever	Ungraded	23-Jan-19	01-Jan-20	20-Sep-20	48	48	21	43.8%
No new confirmed case was reported during week 38 (week ending 20 September 2020). Of 151 suspected cases reported across the country from 1 January to 20 September 2020, 48 were confirmed. A total of 21 deaths (CFR 43.8%) have been reported among the confirmed cases.									
Liberia	Measles	Ungraded	24-Sep-17	01-Jan-19	30-Aug-20	805	93	3	0.4%
In week 35 (week ending 30 August 2020), 11 suspected cases were reported from Nimba (3), Grand Gedeh (1), Cape Mount (2), Lofa (1), Margibi (1), Rivercess (1), Bong (1) and Sinoe (1) counties. Since the beginning of 2020, 805 cases with 3 associated deaths have been reported across the country, of which 93 are laboratory-confirmed, 312 are epi-linked, and 312 are clinically confirmed.									

Country	Event	Grade	Date notified to WCO	Start of reporting period	End of reporting period	Total cases	Cases Confirmed	Deaths	CFR
Madagascar	COVID-19	Grade 3	20-Mar-20	20-Mar-20	04-Oct-20	16 558	16 558	232	1.4%
Madagascar Ministry of Health announced the confirmation of the first COVID-19 case on 14 March 2020. As of 4 October 2020, a total of 16 558 cases have been reported in the country, out of which 15 413 have recovered and 232 deaths reported.									
Malawi	COVID-19	Grade 3	2-Apr-20	2-Apr-20	04-Oct-20	5 786	5 786	179	3.1%
On 2 April 2020, the president of Malawi announced the first confirmed cases of COVID-19 in the country. As of 4 October 2020, the country has a total of 5 786 confirmed cases with 179 deaths and 4 541 recoveries.									
Mali	Humanitarian crisis	Protracted 1	n/a	n/a	13-Aug-20	-	-	-	-
The security situation continues to worsen as violence spreads from the north to the more populated central regions of the country. The presence and activities of armed groups not included in the 2015 agreement continues to influence the security situation, raising challenges for humanitarian access and safety. The country continues to record incidents targeting aid workers. Certain humanitarian operations in Timbuktu and Menaka regions were suspended as a result of violent security incidents. The country has had heavy rains since the end of June 2020, which have caused flooding in Mopti, Gao, Segou and Sikasso regions affecting over 13 200 people, including 5 400 IDPs.									
Mali	COVID-19	Grade 3	25-Mar-20	25-Mar-20	04-Oct-20	3 184	3 184	131	4.1%
On 25 March 2020, the Ministry of Health of Mali reported the first COVID-19 confirmed cases in the country. As of 4 October 2020, a total of 3 184 confirmed COVID-19 cases have been reported in the country including 131 deaths and 2 479 recoveries.									
Mali	Measles	Ungraded	20-Feb-18	01-Jan-19	27-Sep-20	733	382	2	0.3%
During week 32 (week ending 9 August 2020), two suspected cases of measles were reported from three regions in the country. Since 1 January 2020, 682 suspected cases, 353 of which were confirmed have been reported. No associated deaths have been reported so far.									
Mali	Yellow fever	Ungraded	3-Dec-19	01-Jan-20	27-Sep-20	127	4	1	0.8%
As of 27 September 2020, a total of 127 suspected cases have been reported including 4 confirmed cases and 1 death. The cumulative epidemiological situation in 2019 included 78 suspected cases including four 4 confirmed cases and three deaths (CFR 75%). Confirmed cases of yellow fever were reported from the Sikasso and Koulikoro regions.									
Mauritania	COVID-19	Grade 3	13-Mar-20	13-Mar-20	04-Oct-20	7 520	7 520	161	2.1%
The government of Mauritania announced its first confirmed COVID-19 case on 13 March 2020. As of 4 October 2020, a total of 7 520 cases including 161 deaths and 7 188 recovered cases have been reported in the country.									
Mauritania	Crimean-Congo haemorrhagic fever (CCHF)	Ungraded	11-May-20	2-May-20	11-May-20	1	1	0	0.0%
On 11 May 2020, one confirmed case of Crimean Congo haemorrhagic fever was reported from the Moughataa of Mederdra in the district of Tiguine in the wilaya of Trarza. The case is a 60-year-old butcher from Tiguine who presented with symptoms of fever, fatigue, headaches and epistaxis, with onset on 2 May 2020. He had a history of handling meat carcasses but no recent travel history. He presented at a health facility of 7 May 2020 and a sample was collected for testing following the suspicion of a viral haemorrhagic fever disease. The case-patient was evacuated the same day in the Emergency Department in Nouakchott for further care. On 8 May 2020, the case was confirmed with CCHF by RT-PCR from the INRSP and transferred to the infectious diseases department where he was isolated and treated.									
Mauritania	Dengue	Ungraded	11-May-20	3-May-20	11-May-20	7	7	0	0.0%
On 3 May 2020, two suspected cases of dengue fever were admitted to hospital in Mauritania. On May 4 2020, it was found that the majority of consultations at the hospital had a history of unexplained fever. Thus, samples from the two suspected cases were collected and sent to the National Institute of Research in Public Health (INRSP). On 5 May 2020 the 2 cases were confirmed by RT-PCR positive for Dengue virus with DENV-1 serotype. The cases were discharged from hospital and declared cured after symptomatic treatment. A rapid investigation was carried out at city level and a further 5 additional cases (4 women and 1 man) distributed in 4 districts of Atar (Atar, Tinéri, Aghnemrite and Edebaye) were detected.									
Mauritius	COVID-19	Grade 3	18-Mar-20	18-Mar-20	03-Oct-20	385	385	10	2.6%
The Republic of Mauritius announced the first three positive cases of COVID-19 on 18 March 2020. As of 3 October 2020, a total of 385 confirmed COVID-19 cases including 10 deaths and 355 recovered cases have been reported in the country.									
Mozambique	Cholera	Ungraded	20-Feb-20	31-Jan-20	12-Jun-20	2 625	-	21	0.8%
A cholera outbreak is ongoing in Mozambique. From 11 January till 12 June 2020, a total of 2 625 cases including 21 deaths (CFR 0.8%) were reported in two provinces, namely Nampula (1 648 cases and 3 deaths) and Cabo Delgado (997 cases and 15 deaths). In total, 11 districts of Nampula province, namely Nampula City, Mogovolas, Memba, Nacala-à-Velha, Nacaroa, Namialo, Ribawé, Monapo, Larde, Angoche and Malema have been affected since the beginning of the outbreak and only two of them remain currently active (Monapo and Nampula city). In Cabo Delgado province, four districts, namely Mocimboa de Praia, macomia, Ibo and Pemba city are affected.									
Mozambique	COVID-19	Grade 3	22-Mar-20	22-Mar-20	04-Oct-20	9 196	9 196	66	0.7%
The first COVID-19 confirmed case was reported in Mozambique on 22 March 2020. As of 4 October 2020, a total of 9 196 confirmed COVID-19 cases were reported in the country including 66 deaths and 5 852 recoveries.									
Mozambique	Measles	Ungraded	25-Jun-20	01-Jan-20	22-Jul-20	862	140	0	0.0%
There are measles outbreaks in six districts of Zambezia. The outbreak was declared in March 2020 at the Nauela Administrative Post, Alto Molócuê district. As of week 21, there were 862 suspected cases reported, 711 suspected cases tested, 140 IgM+ for measles, no epi-linked cases reported, and no deaths. So far there are 67 cases from Nampula, 18 from Cabo Delgado, 17 from Zambezia and 13 from Niassa provinces. 42% are <5 years old; 48% are aged 5-14 years.									

Country	Event	Grade	Date notified to WCO	Start of reporting period	End of reporting period	Total cases	Cases Confirmed	Deaths	CFR
Namibia	COVID-19	Grade 3	14-Mar-20	14-Mar-20	03-Oct-20	11 626	11 626	123	1.1%
Two cases of COVID-19 were confirmed in Namibia on 14 March 2020. As of 3 October 2020, a total of 11 626 cases have been reported in the country including 9 429 cases who recovered with 123 deaths.									
Namibia	Hepatitis E	Protracted 1	18-Dec-17	08-Sep-17	06-Sep-20	10 072	2 066	65	0.6%
Detailed update given above.									
Niger	Floods	Ungraded	09-Sep-20	09-Sep-20	1-Aug-20			3	-
In August 2020, widespread flooding caused by heavy rain and by overflow of the Niger river has affected several regions of Nigeria (Maradi most affected, Agadez, Niamei and Tahoua regions), leading to fatalities, people displaced and severe damage. Floods are reaching record breaking levels of 700 cubic centimetres - the highest was in 2019 with 639 cubic centimetres. As of 9 September 2020, around 39 655 households have been affected, with 342 263 victims. The WHO is supporting the country office in assessing the public health impact of flooding including access to essential lifesaving health services, surveillance of possible disease outbreaks and participating in joint needs assessments.									
Niger	Humanitarian crisis	Protracted 1	1-Feb-15	1-Feb-15	13-Aug-20	-	-	-	-
The security situation continues to worsen in border areas of Burkina Faso, Mali and Nigeria following armed groups' attacks in the region. This security situation is hampering humanitarian access and affecting access to basic health and social services. Members of an unidentified armed group attacked seven humanitarians working for ACTED and their guide on 9 August 2020, killing all eight people. They were visiting a wildlife reserve near Kouré, in Tillabéri region. Niger is also facing flooding due to heavy rains, particularly in the western and central regions. As of 13 August 2020 over 88 000 people have been affected by floods, 33 people killed, and over 9 100 houses destroyed. According to OCHA statistics, 2.9 million people are in need of humanitarian assistance, 190 248 people are internally displaced, and 217 858 are refugees in the country. Food security remains a key challenge in Niger, particularly for displaced populations and host communities in Diffa, Tahoua, and Tillabéri regions.									
Niger	COVID-19	Grade 3	19-Mar-20	19-Mar-20	04-Oct-20	1 200	1 200	69	5.8%
From 19 March to 4 October 2020, a total of 1 200 cases with 69 deaths have been reported across the country. A total of 1 115 recoveries have been reported from the country.									
Niger	Measles	Ungraded	10-May-19	01-Jan-20	31-May-20	2 079	241	4	0.2%
From week 1 to 22 of 2020, Niger reported a total measles suspected case count of 2 079 of which there were 241 lab confirmed (IgM positive) and 4 deaths in 8 regions: Agadez (50 cases, 0 deaths), Diffa (4 cases, 0 deaths), Dosso (27 cases, 0 deaths), Maradi (101 cases, 2 deaths), Niamey (23 cases, 0 deaths), Tahoua (62 cases, 1 death), Tillabéri (67 cases, 0 deaths) and Zinder (167 cases, 1 death). In 2019 a total of 10 207 suspected measles cases were reported from eight regions in the country. So far, 72 districts have been affected by outbreaks in 2020.									
Nigeria	Humanitarian crisis	Protracted 3	10-Oct-16	n/a	31-Aug-20	-	-	-	-
The humanitarian crisis in the North-eastern part of Nigeria persists, with continued population displacement from security compromised areas characterized by overcrowding in many camps in the region. Health Sector partners are supporting the government led COVID-19 response across the three states, including support through joint resource mobilization activities, overall coordination and monitoring of the response in the northeast.									
Nigeria	COVID-19	Grade 3	27-Feb-20	27-Feb-20	04-Oct-20	59 345	59 345	1 113	1.9%
The Federal Ministry of Health of Nigeria announced the first confirmed case of COVID-19 in Lagos, Nigeria on 27 February 2020. As of 4 October 2020, a total of 59 345 confirmed cases including 1 113 deaths and 50 768 recovered cases have been reported in the country.									
Nigeria	Lassa fever	Ungraded	24-Mar-15	01-Jan-20	27-Sep-20	1 109	1 095	241	21.7%
A total of seven new confirmed cases with one death were reported from Ondo (five cases with one death) and Edo (two cases) state in Nigeria in week 39 (week ending 27 September 2020). From 1 January to 27 September 2020, a total of 1 109 cases (1 095 confirmed and 14 probable) with 241 deaths (CFR 21.7%) have been reported from 129 Local Government Areas across 27 states in Nigeria. A total of eight contacts are currently being followed.									
Nigeria	Measles	Ungraded	25-Sep-17	01-Jan-20	07-Jun-20	420		14	3.3%
Between epi weeks 1 - 23 (week ending 7 June 2020), a total of 420 suspected cases of measles were reported from 88 LGAs in 20 states and FCT. None was laboratory confirmed and 14 deaths were recorded.									
Nigeria	Poliomyelitis (cVDPV2)	Grade 2	01-Jun-18	01-Jan-18	23-Sep-20	55	55	0	0.0%
One cVDPV2 positive environmental sample was reported in Lagos. There have been 3 cVDPV2 cases in 2020, and there were 18 cVDPV2 cases reported in 2019 and 34 in 2018.									
Nigeria	Yellow fever	Ungraded	14-Sep-17	01-Jan-20	21-Jun-20	1 150	5	0	0.0%
In week 25, there were 18 suspected cases reported from 16 LGA in 12 states. Between week 1 and 25 in 2020, a total of 1 150 suspected cases including 12 presumptive positive cases and 5 confirmed cases were reported. In 2019, a total of 4 288 suspected cases were reported in 618 (83.1%) LGAs from all states in the country. Four states: Katsina, Kebbi, Bauchi and Benue had the highest attack rates. A total of 227 cases were confirmed in Nigeria and from IP Dakar and 231 deaths were reported.									
Rwanda	COVID-19	Grade 3	14-Mar-20	14-Mar-20	04-Oct-20	4 866	4 866	29	0.6%
The Rwanda Ministry of Health announced the confirmation of the first COVID-19 case on 14 March 2020. As of 4 October 2020, a total of 4 866 cases with 29 deaths and 3 216 recovered cases have been reported in the country.									
Sao Tome and Principe	COVID-19	Grade 3	6-Apr-20	6-Apr-20	04-Oct-20	913	913	15	1.6%
On 6 April 2020, the Ministry of Health of Sao Tome and Principe reported the country's first case of COVID-19. As of 4 October 2020, a total of 913 confirmed cases of COVID-19 have been reported, including 15 deaths. A total of 887 cases have been reported as recoveries.									

Country	Event	Grade	Date notified to WCO	Start of reporting period	End of reporting period	Total cases	Cases Confirmed	Deaths	CFR
Senegal	COVID-19	Grade 3	02-Mar-20	02-Mar-20	04-Oct-20	15 094	15 094	312	2.1%
Between 2 March 2020 and 4 October 2020, a total of 15 094 confirmed cases of COVID-19 including 312 deaths have been reported from Senegal. A total of 12 805 cases have recovered.									
Senegal	Crimean-Congo haemorrhagic fever (CCHF)	Ungraded	10-Aug-20	10-Aug-20	12-Aug-20	1	0	0	0.0%
A case of Crimean Congo haemorrhagic fever was notified in Senegal on 12 August 2020, as part of the epidemiological surveillance system in the country, in a 27-year-old woman, an artist, living in the Pikine district in Dakar. At the time of diagnosis, she presented with a fever with haemorrhagic signs (gingivorrhagia, metrorrhagia). The preliminary information shows that she visited 3 public structures, including two private structures and one private dispensary since the beginning of the disease. This was in the context of post-tabaski where she handled raw meat. Investigations by a multidisciplinary team is ongoing to document this outbreak.									
Senegal	Dengue	Ungraded	01-Sep-20	07-Sep-20	07-Sep-20	1	1	0	0.0%
A 36-year-old male tested positive for dengue serotype 2 (IgM) on 14 August 2020 by IP Dakar. Onset of symptoms began 10 July 2020 including fever, headaches, and arthralgia. Initial case investigations from the 1 June 2020 onward had found 6 suspect cases who then tested negative for dengue. No other cases have been reported as of 21 September 2020. Response actions include vector control entomological investigation and ongoing case identification.									
Senegal	Yellow Fever	Ungraded	30-Jul-20	30-Jul-20	30-Jul-20	1	1	0	0.0%
A 5-year-old girl presented with fever and abdominal pain a few days prior to consultation on 1 July 2020. She had no history of YF vaccination. A sample was sent to IP Dakar and patient tested positive for YF via seroneutralization technique.									
Seychelles	COVID-19	Grade 3	14-Mar-20	14-Mar-20	04-Oct-20	142	142	0	0.0%
The first COVID-19 confirmed cases were reported in Seychelles 14 March 2020. After 78 days of reporting no confirmed cases, a fishing vessel replacement crew arrived by air in Seychelles on 23 June 2020, a group of them having tested positive for COVID-19 at the point of entry. As of 4 October 2020, 142 cases have been confirmed for COVID-19 in total, including 142 recoveries and no deaths.									
Sierra Leone	COVID-19	Grade 3	31-Mar-20	27-Mar-20	04-Oct-20	2 269	2 269	72	3.2%
On 31 March 2020, the President of Sierra Leone reported the first confirmed COVID-19 case in the country. As of 4 October 2020, a total of 2 269 confirmed COVID-19 cases were reported in the country including 72 deaths and 1 706 recovered cases.									
South Africa	COVID-19	Grade 3	05-Mar-20	03-Mar-20	20-Sep-20	681 289	681 289	16 976	2.5%
The first case of COVID-19 was reported in South Africa on 5 March 2020. As of 4 October 2020, there has been a cumulative total of 681 289 cases, with 16 976 deaths and 614 781 recoveries.									
South Sudan	Floods	Ungraded	1-May-20	1-May-20	01-Sep-20				-
From early May 2020, several counties reported above-average rainfall and rising water levels in the River Nile, which has resulted in massive flooding affecting an estimated 500 000 individuals in 22 affected counties. Furthermore, most of the flood-affected counties are already experiencing multiple shocks such as large-scale displacement, intercommunal violence, and disease outbreaks including Covid-19.									
South Sudan	Humanitarian crisis	Protracted 3	15-Aug-16	n/a	31-Aug-20	-	-	-	-
The humanitarian situation has escalated in recent weeks with inter-communal fighting in several parts of the country. On 22 June 2020 fighting in Pibor town caused displacement toward Verteth and Labarab. A presidential committee has been set up in response to the recent escalation. Floods in Bor South and Panyijar counties also continue to cause displacement of over 13 000 persons.									
South Sudan	COVID-19	Grade 3	5-Apr-2020	2-Apr-20	02-Oct-20	2 726	2 726	50	1.8%
On 5 April 2020, the Ministry of Health of South Sudan reported the country's first case of COVID-19. As of 2 October 2020, a total of 2 726 confirmed COVID-19 cases were reported in the country including 50 deaths and 2 560 recovered cases.									
South Sudan	Hepatitis E	Ungraded	-	03-Jan-19	21-Jun-20	337	41	2	0.6%
The current outbreak in Bentiu UN Protection of Civilians (POC), which started at the beginning of 2019, has continued since the beginning of 2019 with five new cases reported in week 25 (week ending 21 June 2020). As of the reporting date, a total of 337 cases of hepatitis E including two deaths have been reported from South Sudan, mostly from Bentiu POC (325 total cases), and a total of 12 suspected cases including 4 confirmed cases in Lankein. The last case in Lankein was reported in week 25 (week ending on 23 June 2019).									
South Sudan	Measles	Ungraded	24-Nov-18	19-Sep-19	21-Jun-20	916	50	2	0.2%
Between week 38 of 2019 to week 25 of 2020, a total of 916 suspected cases of measles of which 50 were laboratory-confirmed and 2 deaths (CFR 0.6%) have been reported. The outbreak has affected 6 counties (Tonj East, Magwi, Bor, Kapoeta East, Aweil East and Wau) and Bentiu Protection of Civilians Sites (POC).									
Tanzania, United Republic of	COVID-19	Grade 3	16-Mar-20	16-Mar-20	20-Sep-20	509	509	21	4.1%
The Ministry of Health, Community Health Community Development, Gender, Elderly and Children (MOHCDCGEC) in Tanzania reported the country's first case of COVID-19 on 16 March 2020. As of 20 September 2020, a total of 509 cases have been reported in the country including 21 deaths. The last information on confirmed COVID-19 cases was shared by Tanzania mainland on 29 April 2020 and Zanzibar last shared information on on-going COVID-19 outbreak on 7 May 2020.									
Togo	COVID-19	Grade 3	06-Mar-20	01-Mar-20	04-Oct-20	1 854	1 854	48	2.6%
On 6 March 2020, the Ministry of Health and Public Hygiene of Togo announced the confirmation of its first case of COVID-19. As of 4 October 2020, a total of 1 854 cases including 48 deaths and 1 392 recovered cases have been reported in the country.									

Country	Event	Grade	Date notified to WCO	Start of reporting period	End of reporting period	Total cases	Cases Confirmed	Deaths	CFR
Togo	Poliomyelitis (cVDPV2)	Grade 2	18-Oct-19	13-Sep-19	23-Sep-20	17	17	0	0.0%
No new case of cVDPV2 was reported during the past week. There have been nine cases so far in 2020 while the total number of cVDPV2 cases reported in 2019 remains eight.									
Togo	Yellow Fever	Ungraded	4-Feb-20	3-Feb-20	24-Aug-20	3	1	1	33.3%
On 28 April 2020, WHO received information regarding a confirmed yellow fever case in Mango village, Oti district, Savanes region in the northern part of Togo. The results were confirmed at the yellow fever reference laboratory, Institut Pasteur in Dakar, Senegal by seroneutralisation. The case is a 55-year-old female with no travel or vaccination history for yellow fever. On 3 February 2020, she presented to a health facility with symptoms of fever with aches. The following day she developed jaundice and a blood sample was taken and transported to the national laboratory as yellow fever was suspected. The case-patient died three days later while receiving treatment. On 17 March, the sample tested IgM positive for yellow fever. On 22 March 2020, an in-depth multi-disciplinary investigation was conducted, and no additional case was detected.									
Uganda	Humanitarian crisis - refugee	Ungraded	20-Jul-17	n/a	15-Sep-20	-	-	-	-
Between 1 and 31 July 2020, a total of 3 056 new refugee arrivals crossed into Uganda from the Democratic Republic of the Congo (3 056), South Sudan and Burundi. Uganda hosted 1 425 040 asylum seekers as of 30 June 2020, with 94% living in settlements in 11 of Uganda's 128 districts and in Kampala. Most are women within the age group 18 - 59 years.									
Uganda	Cholera	Ungraded	11-May-20	29-Apr-20	07-Sep-20	1 488	17	6	0.4%
As of 7 September 2020, we have 1 488 cases, 483 in Moroto, 543 in Nabilatuk, 72 in Napak, 390 in Kotido. On 11 May 2020, a cholera outbreak was confirmed in Moroto district. The index case was a 17-year-old male patient from Natapar Kocuc Village, Loputuk parish, Nadunget Subcounty who was seen on 29 April 2020 with acute watery diarrhoea and severe dehydration. On 4 May 2020 more cases with similar symptoms from the same location with the index case were seen and cholera was suspected. On 11 May 2020, CPHL confirming <i>Vibrio cholerae</i> serotype O1 Inaba detected in 7 out of 8 stool samples that were collected. As of 12 June 2020, the cumulative number of cases is 682 including 6 deaths.									
Uganda	COVID-19	Grade 3	21-Mar-20	21-Mar-20	04-Oct-20	8 808	8 808	81	0.9%
The first COVID-19 confirmed case was reported in Uganda on 21 March 2020. As of 4 October 2020, a total of 8 808 confirmed COVID-19 cases, 5 078 recoveries with 81 deaths.									
Zambia	COVID-19	Grade 3	18-Mar-20	18-Mar-20	04-Oct-20	15 052	15 052	333	2.2%
The first COVID-19 confirmed case was reported in Zambia on 18 March 2020. As of 4 October 2020, a total of 15 052 confirmed COVID-19 cases were reported in the country including 333 deaths and 14 187 recovered cases.									
Zambia	Poliomyelitis (cVDPV2)	Grade 2	17-Oct-19	16-Jul-19	23-Sep-20	2	2	0	0.0%
No new case of circulating vaccine-derived poliovirus type 2 (cVDPV2) has been reported since the beginning of 2020. There were two cVDPV2 cases reported in 2019.									
Zimbabwe	Anthrax	Ungraded	6-May-19	6-May-19	9-Aug-20	338		1	0.3%
The anthrax outbreak is ongoing in Zimbabwe with a cumulative total of 338 cases and one death notified since the beginning of the outbreak in week 36 (week starting 6 May 2019) of 2019. This outbreak started in week 36, 2019, affecting mainly Buhera and Gokwe North and South districts but a surge in cases started appearing in week 38 when cases were reported in some other areas. Since 1 January to 9 August 2020, a total of 338 cases were reported. As of week 32, the two recent cases reported were from Gokwe North District (1) in Midlands Province and Buhera District (1) in Manicaland Province.									
Zimbabwe	COVID-19	Grade 3	20-Mar-20	20-Mar-20	04-Oct-20	7 888	7 888	228	2.9%
The first COVID-19 confirmed case was reported in Zimbabwe on 20 March 2020. As of 4 October 2020, a total of 7 888 confirmed COVID-19 cases were reported in the country including 228 deaths and 6 359 cases that recovered.									

†Grading is an internal WHO process, based on the Emergency Response Framework. For further information, please see the Emergency Response Framework: <http://www.who.int/hac/about/erf/en/>.

Data are taken from the most recently available situation reports sent to WHO AFRO. Numbers are subject to change as the situations are dynamic.

© WHO Regional Office for Africa

This is not an official publication of the World Health Organization.

Correspondence on this publication may be directed to:

Dr Benido Impouma

Programme Area Manager, Health Information & Risk Assessment

WHO Emergency Preparedness and Response

WHO Regional Office for Africa

P O Box. 06 Cité du Djoué, Brazzaville, Congo

Email: afrooutbreak@who.int

Requests for permission to reproduce or translate this publication – whether for sale or for non-commercial distribution – should be sent to the same address.

The designations employed and the presentation of the material in this publication do not imply the expression of any opinion whatsoever on the part of the World Health Organization concerning the legal status of any country, territory, city or area or of its authorities, or concerning the delimitation of its frontiers or boundaries. Dotted lines on maps represent approximate borderlines for which there may not yet be full agreement.

All reasonable precautions have been taken by the World Health Organization to verify the information contained in this publication. However, the published material is being distributed without warranty of any kind, either express or implied. The responsibility for the interpretation and use of the material lies with the reader. In no event shall the World Health Organization or its Regional Office for Africa be liable for damages arising from its use.

Contributors

R. Nansseu (Democratic Republic of the Congo)
Mhata Petrus (Namibia)

Graphic design

A. Moussongo

Editorial Team

B. Impouma
C. Okot
B. Farham
G. Williams
J. Kimenyi
E. Kibangou
O. Ogundiran
T. Lee
D. Niyukuri
T. Metcalf
J. Nguna

Production Team

A. Bukhari
T. Mlanda
R. Ngom
F. Moussana

Editorial Advisory Group

Z. Yoti, *Regional Emergency Director*
B. Impouma
Y. Ali Ahmed
N. Nsenga
M. Djingarey

Data sources

Data and information is provided by Member States through WHO Country Offices via regular situation reports, teleconferences and email exchanges. Situations are evolving and dynamic therefore numbers stated are subject to change.