



Overview (April–June 2018)

From April to June 2018, Greater Mekong Subregion (GMS) countries reported 22 873 malaria cases, representing a 7% decrease compared to the same time period in 2017.

Cambodia

The country reported 16 232 cases, a 96% increase compared to the same time period in 2017. Cases are mostly in the north-eastern and north-western regions of Cambodia, along the forested border areas with Viet Nam, Lao PDR and Thailand.

China

The country reported no indigenous cases.

Lao People's Democratic Republic (PDR)

The country reported 2151 cases, a 13% decrease compared to the same time period in 2017. Most cases are in the five southern provinces.

Myanmar

The country reported 1113 cases, a 85% decrease compared to the same time period in 2017. Most cases are in the border provinces to India and Bangladesh.

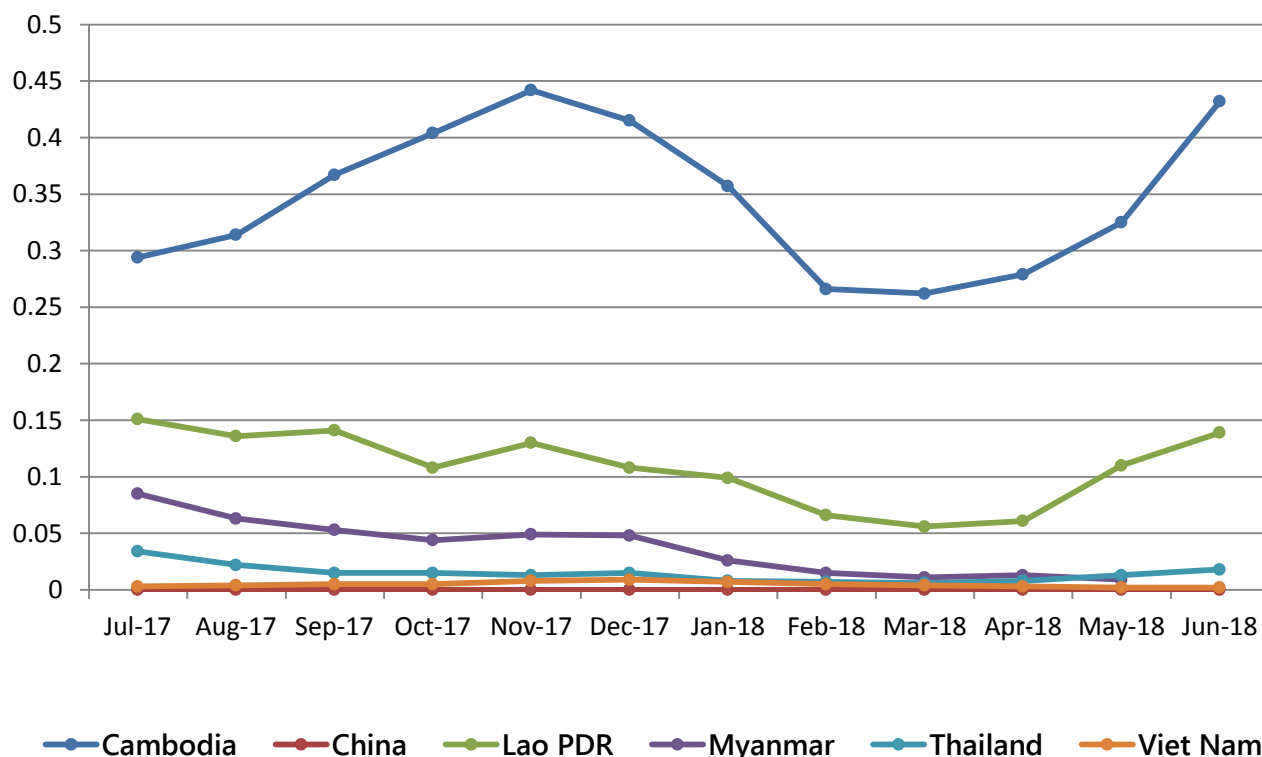
Thailand

The country reported 2638 cases, a 53% decrease compared to the same time period in 2017. Most cases are in the border provinces to Malaysia, Myanmar and Cambodia.

Viet Nam

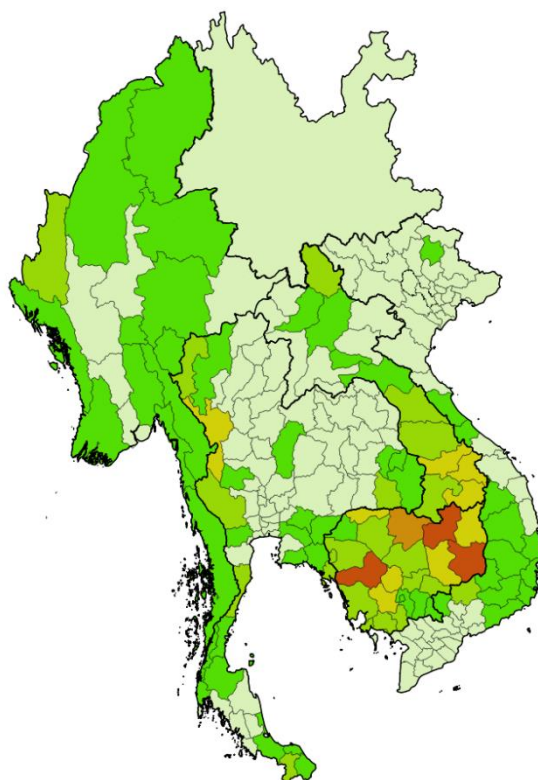
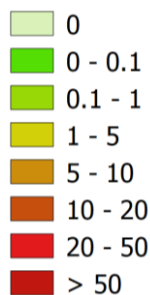
The country reported 659 cases, a 13% increase compared to the same time period in 2017. Most cases are indigenous from highland areas in the central provinces of the country.

Monthly malaria incidence in the GMS (last 12 months)*



*Incidence is calculated as the number of reported cases per month per 1000 population.

Incidence per 1000 population



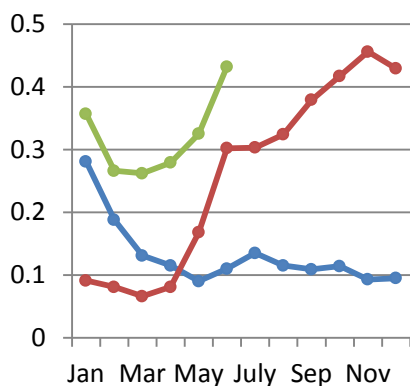
The boundaries and names shown and the designations used on this map do not imply the expression of any opinion whatsoever on the part of the World Health Organization concerning the legal status of any country, territory, city or area or of its authorities, or concerning the delimitation of its frontiers or boundaries. Dotted and dashed lines on maps represent approximate border lines for which there may not yet be full agreement.

*Incidence is calculated as the number of reported cases from April to June 2018 per 1000 population.

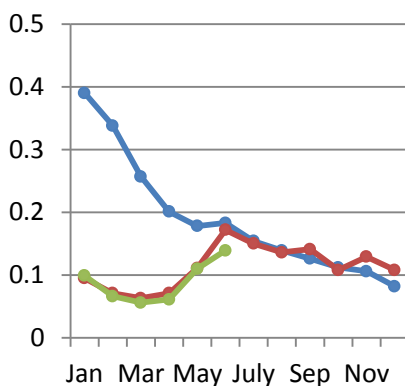
Monthly malaria incidence by country* (2016–2018)

2016 2017 2018

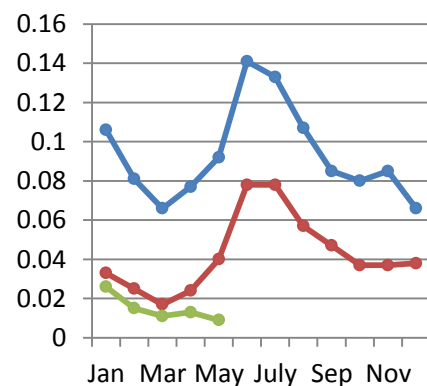
Cambodia



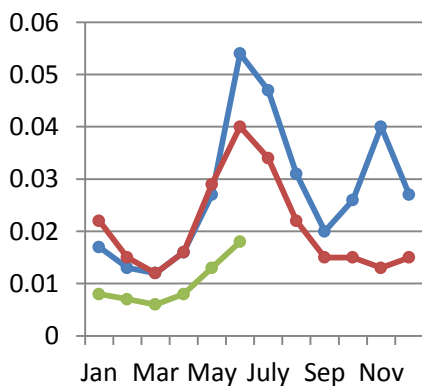
Lao PDR



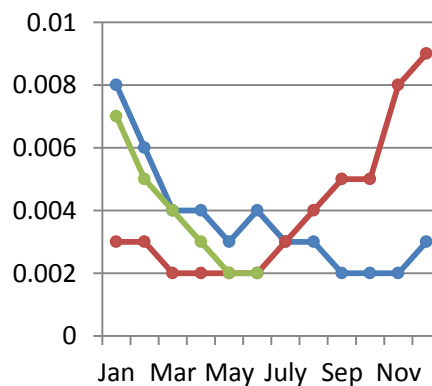
Myanmar



Thailand



Viet Nam

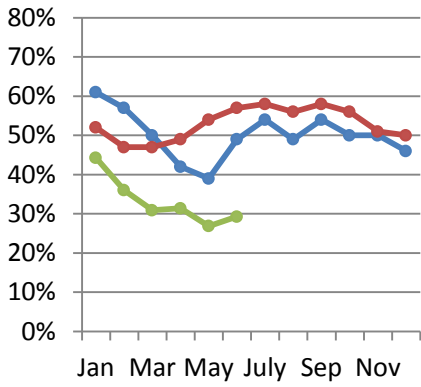


*Incidence is calculated as the number of reported cases per month per 1000 population.

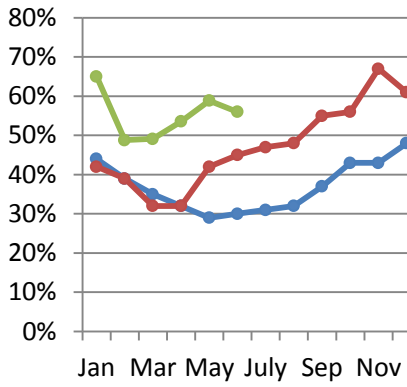
Percentage of *P. falciparum* cases by month by country* (2016–2018)

— 2016 — 2017 — 2018

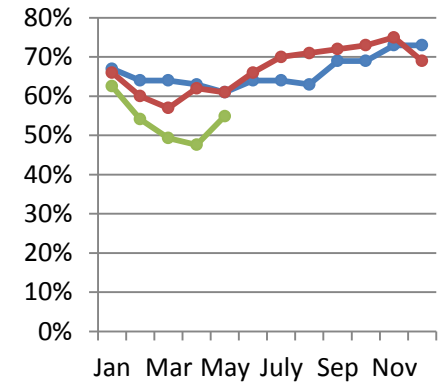
Cambodia



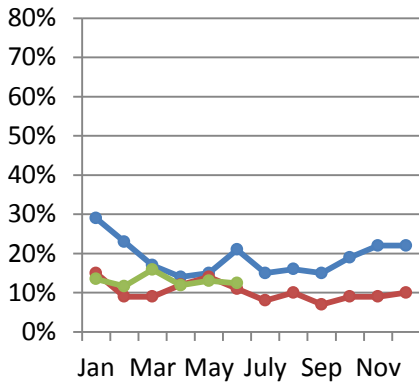
Lao PDR



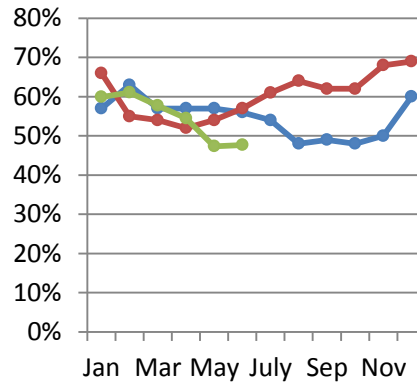
Myanmar



Thailand



Viet Nam

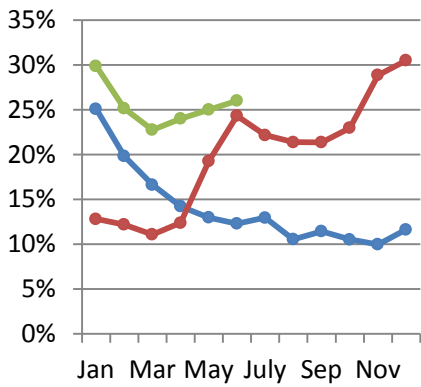


*Percentage of *P. falciparum* cases is calculated as number of confirmed cases due to *P. falciparum* divided by total confirmed cases per month per country.

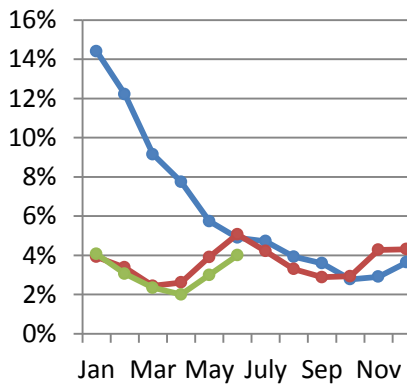
Monthly test positivity rate (TPR) by country* (2016–2018)

— 2016 — 2017 — 2018

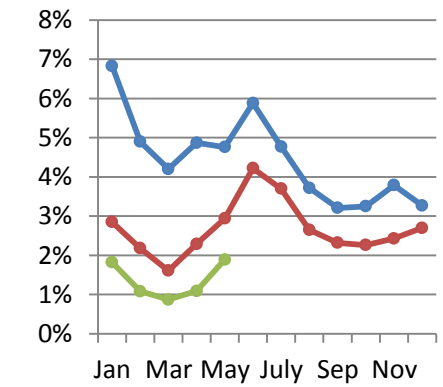
Cambodia



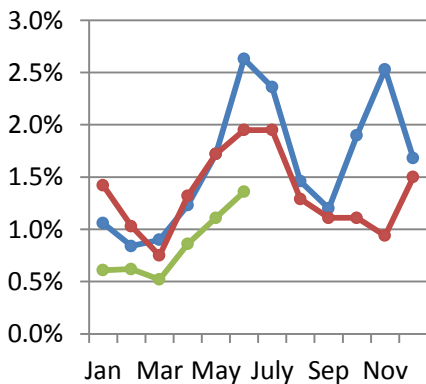
Lao PDR



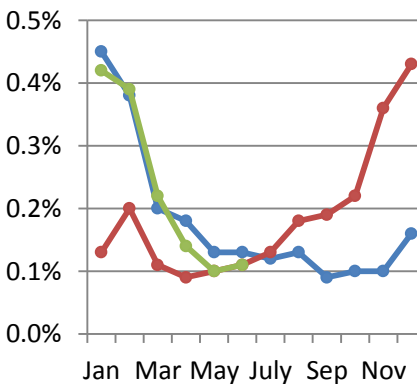
Myanmar



Thailand



Viet Nam



*TPR is calculated as number of confirmed cases divided by number of tested cases (including rapid diagnostic tests and microscopy) per month per country.

Monthly malaria cases and deaths by country in 2017 (January–December)

Country	Surveillance indicator ¹	Jan	Feb	Mar	Apr	May	Jun	Jul	Aug	Sep	Oct	Nov	Dec
Cambodia	Deaths	0	0	0	0	0	0	0	0	0	0	1	0
	Suspected cases tested	10 644	9 967	8 955	9 809	13 115	18 660	20 592	22 820	26 735	27 357	23 790	21 141
	Confirmed cases	1 363	1 214	991	1 214	2 524	4 539	4 564	4 880	5 707	6 280	6 865	6 449
	<i>P. falciparum</i> cases	712	571	464	600	1 353	2 570	2 636	2 714	3 323	3 512	3 514	3 203
	<i>P. vivax</i> cases	606	583	489	515	1 040	1 763	1 749	2 003	2 179	2 485	3 104	2 997
	Mixed cases	45	60	38	99	131	206	179	163	205	283	247	249
	Other cases	0	0	0	0	0	0	0	0	0	0	0	0
China	Deaths	0	0	0	0	0	0	0	0	0	0	0	0
	Suspected cases tested	10 669	11 424	11 117	12 432	15 576	14 254	17 108	17 835	21 742	17 974	14 285	11 757
	Confirmed cases	13	43	23	34	39	55	31	21	12	9	5	6
	<i>P. falciparum</i> cases	0	2	0	2	0	1	0	0	2	0	0	2
	<i>P. vivax</i> cases	13	41	23	32	39	54	31	21	10	9	4	4
	Mixed cases	0	0	0	0	0	0	0	0	0	0	1	0
	Other cases	0	0	0	0	0	0	0	0	0	0	0	0
Lao PDR	Deaths	0	0	0	0	0	0	1	0	0	0	1	0
	Suspected cases tested	16 512	14 480	17 612	18 558	20 533	23 289	24 473	28 289	33 424	25 253	20 718	17 117
	Confirmed cases	648	490	430	485	802	1 180	1 031	933	963	740	887	738
	<i>P. falciparum</i> cases	275	190	137	157	338	536	485	444	527	418	594	447
	<i>P. vivax</i> cases	361	295	284	321	454	621	520	449	410	306	284	286
	Mixed cases	12	5	9	7	10	23	26	40	26	16	9	5
	Other cases	0	0	0	0	0	0	0	0	0	0	0	0
Myanmar	Deaths	1	1	1	1		2	2	8	0	0	0	0
	Suspected cases tested	72 933	67 027	62 134	56 287	74 548	98 820	117 147	121 981	116 267	99 258	104 306	90 740
	Confirmed cases	2 077	1 462	1 002	1 289	2 193	4 168	4 340	3 231	2 694	2 247	2 532	2 453
	<i>P. falciparum</i> cases	1 375	876	568	804	1 350	2 749	3 041	2 301	1 935	1 640	1 907	1 696
	<i>P. vivax</i> cases	662	558	405	457	804	1 356	1 200	845	682	538	571	715
	Mixed cases	45	34	29	33	44	82	104	92	80	73	56	46
	Other cases	2	0	1	0	2	0	2	0	0	0	1	0
Thailand ²	Deaths	Data not provided											
	Suspected cases tested	102 628	92 906	105 890	78 745	111 183	134 315	113 579	112 696	91 009	88 773	93 208	63 852
	Confirmed cases	1 459	958	793	1 036	1 910	2 616	2 219	1 457	1 009	983	874	959
	<i>P. falciparum</i> cases	266	97	77	147	312	313	180	159	79	95	87	110
	<i>P. vivax</i> cases	1 040	732	622	766	1 401	2 062	1 807	1 169	799	726	672	730
	Mixed cases	2	5	6	3	13	11	34	11	7	15	7	14
	Other cases	151	124	88	120	184	230	198	118	124	147	108	105
Viet Nam	Deaths	0	0	0	0	0	1	0	1	0	1	0	2
	Suspected cases tested	247 798	146 774	195 424	180 680	192 568	190 150	199 330	216 387	228 651	221 439	200 388	191 518
	Confirmed cases	313	292	213	168	202	215	267	396	429	492	728	827
	<i>P. falciparum</i> cases	206	162	116	88	110	123	163	252	264	307	494	567
	<i>P. vivax</i> cases	102	118	96	76	88	91	104	140	152	174	221	243
	Mixed cases	4	11	0	4	3	1	0	4	5	11	12	15
	Other cases	1	1	1	0	1	0	0	0	8	0	1	2

¹ Mixed cases include cases identified with more than one *Plasmodium* species. Other cases refer to *P. malariae*, *P. ovale*, *P. knowlesi* and unknown. Data in the table include microscopy and rapid diagnostic tests (RDTs).

² Numbers of cases tested are reported from the vertical malaria programme only, excluding hospitals. Full integration is expected by September 2018.

Monthly malaria cases and deaths by country in 2018 (January–June)

Country	Surveillance indicator ¹	Jan	Feb	Mar	Apr	May	Jun	Jul	Aug	Sep	Oct	Nov	Dec
Cambodia	Deaths	1	0	0	0	0	0						
	Suspected cases tested	18 714	16 579	18 135	18 303	20 171	26 048						
	Confirmed cases	5 591	4 170	4 102	4 368	5 094	6 770						
	<i>P. falciparum</i> cases	2 473	1 501	1 267	1 371	1 369	1 981						
	<i>P. vivax</i> cases	2 933	2 561	2 735	2 877	3 532	4 588						
	Mixed cases	185	108	100	120	193	201						
	Other cases	0	0	0	0	0	0						
China	Deaths	0	0	0	1	0	0						
	Suspected cases tested	10 961	8 712	10 488	10 391	14 468	13 994						
	Confirmed cases	11	14	20	23	25	32						
	<i>P. falciparum</i> cases	1	0	0	2	0	0						
	<i>P. vivax</i> cases	10	13	20	21	25	32						
	Mixed cases	0	0	0	0	0	0						
	Other cases	0	0	0	0	0	0						
Lao PDR	Deaths	1	0	0	0	0	1						
	Suspected cases tested	16 541	15 498	16 830	17 346	22 252	25 474						
	Confirmed cases	683	457	385	425	761	965						
	<i>P. falciparum</i> cases	444	223	189	228	448	539						
	<i>P. vivax</i> cases	230	226	188	191	308	416						
	Mixed cases	9	8	8	6	5	10						
	Other cases	0	0	0	0	0	0						
Myanmar	Deaths	0	0	0	0	0	NA						
	Suspected cases tested	81 475	81 093	78 581	59 919	24 174	NA						
	Confirmed cases	1 667	917	705	655	458	NA						
	<i>P. falciparum</i> cases	1 044	497	348	314	252	NA						
	<i>P. vivax</i> cases	579	405	347	335	200	NA						
	Mixed cases	47	16	11	9	7	NA						
	Other cases	0	0	0	1	0	NA						
Thailand ²	Deaths	Data not provided											
	Suspected cases tested	74 203	72 992	65 273	62 949	79 962	88 409						
	Confirmed cases	539	459	371	544	889	1 205						
	<i>P. falciparum</i> cases	66	50	55	61	108	135						
	<i>P. vivax</i> cases	408	364	279	441	698	929						
	Mixed cases	9	10	8	7	20	14						
	Other cases	7	6	4	5	4	8						
Viet Nam	Deaths	0	0	0	1	0	0						
	Suspected cases tested	146 677	121 634	165 569	176 352	204 014	185 103						
	Confirmed cases	614	475	357	255	209	195						
	<i>P. falciparum</i> cases	368	290	206	139	99	93						
	<i>P. vivax</i> cases	229	169	138	106	101	96						
	Mixed cases	16	15	11	8	7	5						
	Other cases	1	1	2	2	2	1						

¹ Mixed cases include cases identified with more than one *Plasmodium* species. Other cases refer to *P. malariae*, *P. ovale*, *P. knowlesi* and unknown. Data in the table include microscopy and rapid diagnostic tests (RDTs).

² Numbers of cases tested are reported from the vertical malaria programme only, excluding hospitals. Full integration is expected by September 2018.

Data sources: Reported cases include cases reported from all sources of public health facilities, community health workers and the private sector, except for Cambodia and Myanmar data which do not include private sector data. Myanmar data do not include data from non-governmental organizations (NGOs). For this publication, Myanmar data were not available for June 2018. The case count in China includes only indigenous cases. For the regional map of malaria incidence by province, the annual population estimate is based on the estimate submitted by each country to the World Malaria Report in 2017. All other population estimates are based on the annual UN estimate of total population.

Disclaimer: The Mekong Malaria Elimination (MME) is an initiative aimed at supporting the countries in the Greater Mekong Subregion towards the goal of malaria elimination by 2030. The World Health Organization (WHO) has compiled data for this publication based on reports from the countries in the Greater Mekong Subregion. The data presented in this publication are based on available data as of August 2018. The designations employed and the presentation of the material in this summary do not imply the expression of any opinion whatsoever on the part of WHO concerning the legal status of any country, territory, city or area or of its authorities, or concerning the delimitation of its frontiers or boundaries. WHO does not warrant that the information contained in this summary is complete and correct and shall not be liable for any damages incurred as a result of its use. This summary may not be reviewed, abstracted, quoted, reproduced, transmitted, distributed, translated or adapted, in part or in whole, in any form or by any means without the prior written consent of WHO.