

Poliomyelitis Surveillance - Report for Polio Week 52, ending December 25, 2005

(as of 18 Sep 2006)

Table 1: Classification of AFP cases with onset in 2005 and key surveillance indicators

	Reported AFP 2004	Expected AFP 2005	Reported AFP 2005	Classification				Indicators					Latest Report Date	
				Confirmed Polio	Polio-compatible	Non-polio (Discarded)	Pending	Non-polio AFP Rate/ 100,000 < 15 yrs	% with 2 Specimens w/n 14 Days of Onset	% Reported Within 14 Days of Onset	% With Follow-up	% Inadequate Stools With Follow-up		Pending Classification > 90 Days After Onset
Australia	45	41	31	0	0	31	0	0.76	19%	39%	39%***	40%	0	21-Aug-06
Brunei Darussalam	1	1	2	0	0	2	0	2.00	0%	0%	100%	100%	0	25-Jan-06
Cambodia	83	53	112	1*	1**	110	0	2.11	76%	79%	100%	100%	0	02-Jun-06
China	5,285	2,845	5,425	0	12	5,413	0	1.91	90%	94%	98%	97%	0	04-Aug-06
Hong Kong, SAR, China	14	10	22	0	0	22	0	2.20	77%	86%	100%	100%	0	28-Feb-06
Japan	0	181	0	-	-	-	-	-	-	-	-	-	-	-
Korea, Republic of	37	97	17	0	0	17	0	0.18	100%	100%	100%	-	0	31-Jan-06
Lao PDR	75	25	59	0	0	59	0	2.36	69%	75%	92%	100%	0	28-Jun-06
Macao, SAR, China	2	1	1	0	0	1	0	1.00	100%	100%	100%	-	0	09-Jan-06
Malaysia	115	90	140	0	0	140	0	1.56	71%	86%	99%	100%	0	22-Mar-06
Mongolia	7	9	8	0	0	8	0	0.89	100%	100%	100%	-	0	26-Jan-06
New Zealand	12	9	9	0	0	9	0	1.00	22%	33%	67%	57%	0	24-Mar-06
Pacific Island Countries	13	11	4	0	1	3	0	0.36	0%	0%	75%	75%	0	14-Sep-06
Papua New Guinea	12	23	18	0	0	18	0	0.78	50%	78%	94%	89%	0	15-May-06
Philippines	339	324	352	0	2	350	0	1.09	80%	89%	92%	96%	0	17-Apr-06
Singapore	6	7	10	0	0	10	0	1.43	80%	100%	100%	100%	0	23-Jan-06
Vietnam	475	321	470	0	1	469	0	1.46	96%	87%	98%	100%	0	22-Jun-06
Western Pacific Region	6,521	4,048	6,680	1*	17	6,662	0	1.65	88%	92%	98%	95%	0	

*cVDVP confirmed by lab; 1 more case in 2006

**Epidemiologically linked to cVDVP case

*** Follow-up is not required by the Polio Expert Committee if a case can be classified as non-polio AFP on the information available.

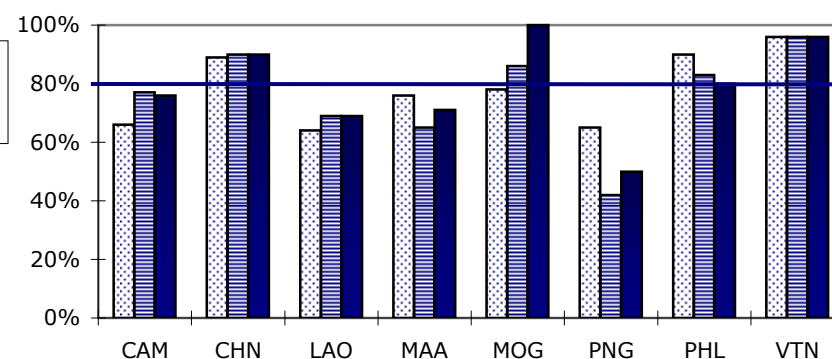
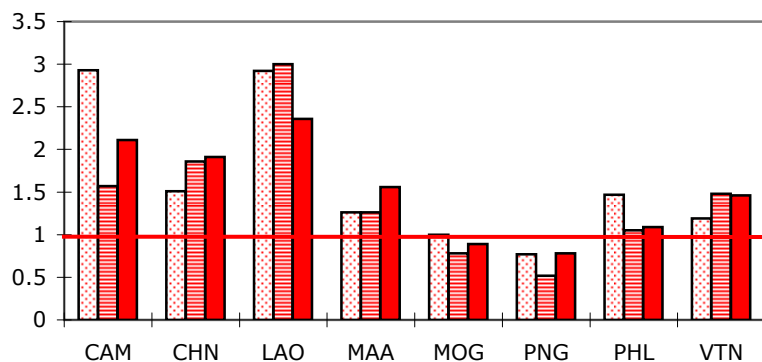


Table 2: Laboratory investigation of AFP cases with onset in 2005

Country	National Lab ¹	AFP Cases with Specimens	AFP Cases Positive For:					Pending	% Positive for NPEV	% Results Reported w/n 28 Days	Latest Report Date
			P1	P2	P3	Polio Mix	Polio/NPEV				
Australia ²	VIDRL	18	0	0	2	0	0	0	15%	97%	09-Feb-06
Cambodia	NIID	113	0	2	1	0	1	0	30%	100%	01-Mar-06
China, Anhui	Prov. Lab	242	1	5	5	5	1	0	9%	99%	04-Aug-06
China, Beijing	Prov. Lab	37	0	1	0	1	0	0	10%	100%	04-Aug-06
China, Chongqing	Prov. Lab	111	0	1	2	0	0	0	3%	96%	04-Aug-06
China, Fujian	Prov. Lab	142	2	6	2	1	1	0	12%	94%	04-Aug-06
China, Gansu	Prov. Lab	118	2	2	2	1	1	0	6%	100%	04-Aug-06
China, Guangdong	Prov. Lab	309	2	10	6	8	2	0	11%	97%	04-Aug-06
China, Guangxi	Prov. Lab	261	1	5	3	3	0	0	9%	98%	04-Aug-06
China, Guizhou	Prov. Lab	271	2	3	0	4	1	0	9%	98%	04-Aug-06
China, Hainan	Prov. Lab	31	1	0	1	2	0	0	6%	100%	04-Aug-06
China, Hebei	Prov. Lab	456	3	5	4	6	1	0	7%	93%	04-Aug-06
China, Heilongjiang	Prov. Lab	113	2	1	0	0	0	0	1%	99%	04-Aug-06
China, Henan	Prov. Lab	551	2	13	5	5	1	0	15%	96%	04-Aug-06
China, Hubei	Prov. Lab	202	2	2	0	3	0	0	3%	91%	04-Aug-06
China, Hunan	Prov. Lab	225	4	5	6	3	1	0	15%	98%	04-Aug-06
China, Jiangsu	Prov. Lab	247	2	4	3	6	0	0	10%	96%	04-Aug-06
China, Jiangxi	Prov. Lab	147	1	6	1	3	0	0	14%	96%	04-Aug-06
China, Jilin	Prov. Lab	78	0	0	1	1	0	0	10%	92%	04-Aug-06
China, Liaoning	Prov. Lab	87	0	2	1	0	0	0	8%	98%	04-Aug-06
China, Neimongol	Prov. Lab	61	1	1	0	1	0	0	6%	99%	04-Aug-06
China, Ningxia	Prov. Lab	18	1	0	0	0	0	0	11%	100%	04-Aug-06
China, Qinghai	Prov. Lab	33	0	0	0	0	0	0	11%	97%	04-Aug-06
China, Shaanxi	Prov. Lab	138	1	8	2	0	1	0	8%	95%	04-Aug-06
China, Shandong	Prov. Lab	424	1	12	3	7	0	0	6%	97%	04-Aug-06
China, Shanghai	Prov. Lab	28	0	1	0	0	0	0	0%	98%	04-Aug-06
China, Shanxi	Prov. Lab	153	1	1	0	3	0	0	8%	98%	04-Aug-06
China, Sichuan	Prov. Lab	338	2	5	7	4	2	0	9%	96%	04-Aug-06
China, Tianjin	Prov. Lab	27	0	3	0	3	2	0	7%	100%	04-Aug-06
China, Tibet	Prov. Lab	5	0	0	0	0	0	0	0%	100%	04-Aug-06
China, Xinjiang	Prov. Lab	51	1	0	0	0	0	0	4%	97%	04-Aug-06
China, Yunnan	Prov. Lab	221	2	2	4	0	2	0	14%	94%	04-Aug-06
China, Zhejiang	Prov. Lab	170	1	4	2	3	0	0	4%	92%	04-Aug-06
Hong Kong ³ , SAR, China	PHLC	25	1	1	0	0	0	0	2%	100%	08-Apr-06
Korea, Rep. Of	NIH	17	0	0	0	0	0	0	0%	94%	31-Jan-06
Lao PDR	NIID	52	0	0	0	0	0	0	31%	100%	01-Mar-06
Malaysia	IMR, KL	144	1	0	2	0	0	0	2%	99%	11-Mar-06
Mongolia	PHI	9	0	0	0	0	0	0	0%	100%	25-Jan-06
New Zealand	IESR	6	0	0	0	0	0	0	20%	100%	14-Feb-06
Pacific Island Countries	VIDRL	3	0	0	0	0	0	0	0%	100%	07-Apr-06
Papua New Guinea	IMR, PNG	19	0	0	0	0	0	0	14%	67%	09-Jun-06
Philippines	RITM	395	1	2	2	0	0	0	5%	100%	24-Feb-06
Singapore	SGH	12	0	0	0	0	0	0	8%	100%	14-Jan-06
Vietnam, North	NIHE	281	0	3	4	0	0	0	15%	98%	22-May-06
Vietnam, South	PI	205	1	5	0	0	0	0	11%	100%	13-Feb-06
Total		6,594	42	121	71	73	17	0	10%	97%	

¹ Acronyms:

VIDRL - Victorian Infectious Diseases Reference Laboratory, Australia

NIID - National Institute of Infectious Diseases, Japan

PHLC - Public Health Laboratory Centre, Hong Kong

SGH - Singapore General Hospital

² Includes cases from Brunei Darussalam

³ Includes cases from Macao, SAR, China

IMR, KL - Institute of Medical Research, Kuala Lumpur

IMR, PNG - Institute of Medical Research, Papua New Guinea

IESR - Institute of Environmental Science and Research, New Zealand

RITM - Research Institute for Tropical Medicine, Philippines

PHI - Public Health Institute, Mongolia

NIH - National Institute of Health, Seoul

NIHE - National Institute of Hygiene and Epidemiology, Hanoi

PI - Pasteur Institute, Ho Chi Minh

Table 3: Intratypic differentiation of polio isolates from AFP cases with onset in 2005

Country	Regional Reference Lab ¹	AFP Cases w/ Polio Isolates	ITD Results ²							Sequencing			ITD Results w/n 14 Days of Receipt	ITD Results w/n 28 Days of Receipt	ITD Results w/n 60 Days of Onset	ITD Results w/n 90 Days of Onset	
			P1S	P1W	P2S	P2W	P3S	P3W	Pending ³	Discordant ⁴	VDPV	Not VDPV					Pending
China	CCDC	318	80	0	179	0	116	0	0	29	1	28	0	81%	86%	70%	87%
Hong Kong, SAR, China	PHLC	2	1	0	1	0	0	0	0	0	-	-	-	100%	100%	100%	100%
Singapore	SGH	0	-	-	-	-	-	-	-	-	-	-	-	-	-	-	-
Australia	VIDRL	2	0	0	0	0	2	0	0	0	-	-	-	100%	100%	100%	100%
Malaysia	VIDRL	3	1	0	0	0	2	0	0	0	-	-	-	100%	100%	100%	100%
New Zealand	VIDRL	0	-	-	-	-	-	-	-	-	-	-	-	-	-	-	-
Pacific Island Countries	VIDRL	0	-	-	-	-	-	-	-	-	-	-	-	-	-	-	-
Papua New Guinea	VIDRL	0	-	-	-	-	-	-	-	-	-	-	-	-	-	-	-
Philippines	VIDRL	5	1	0	2	0	2	0	0	0	-	-	-	80%	100%	100%	100%
Japan	NIID	1*	0	0	0	0	1	0	0	1	1*	0	0	100%	100%	100%	100%
Cambodia	NIID	4	0	0	2	0	2	0	0	1	1**	0	0	100%	100%	100%	100%
Korea, Rep. Of	NIID	0	-	-	-	-	-	-	-	-	-	-	-	-	-	-	-
Lao PDR	NIID	0	-	-	-	-	-	-	-	-	-	-	-	-	-	-	-
Mongolia	NIID	0	-	-	-	-	-	-	-	-	-	-	-	-	-	-	-
Vietnam	NIID	13	1	0	8	0	4	0	0	1	0	1	0	100%	100%	76%	95%
Total		348	84	0	192	0	129	0	0	32	3	29	0	83%	88%	73%	88%

* Isolated from an adult AFP case.

** One lab confirmed VDPV, with another clinically confirmed case with an epidemiological linkage.

Table 4: Laboratory investigation of polio isolates from non-AFP cases in 2005⁵

Country	Regional Reference Lab	Polio Isolates	ITD Results							Sequencing		
			P1S	P1W	P2S	P2W	P3S	P3W	Pending	Discordant	VDPV	Pending
China	CCDC	113	47	0	38	0	28	0	0	2	0	0
Hong Kong, SAR, China	PHLC	91	35	0	35	0	21	0	0	9	3	0
Singapore	SGH	0	-	-	-	-	-	-	-	-	-	-
Australia	VIDRL	11	6	0	4	0	1	0	0	1	0	0
Malaysia	VIDRL	11	5	0	1	0	5	0	0	1	0	0
New Zealand	VIDRL	0	-	-	-	-	-	-	-	-	-	-
Pacific Island Countries	VIDRL	0	-	-	-	-	-	-	-	-	-	-
Papua New Guinea	VIDRL	9	2	0	3	0	4	0	0	-	-	-
Philippines	VIDRL	0	-	-	-	-	-	-	-	-	-	-
Cambodia	NIID	0	-	-	-	-	-	-	-	-	-	-
Japan	NIID	1	0	0	0	0	1	0	0	-	-	-
Korea, Rep. Of	NIID	0	-	-	-	-	-	-	-	-	-	-
Lao PDR	NIID	32	5	0	14	0	13	0	0	-	-	-
Mongolia	NIID	0	-	-	-	-	-	-	-	-	-	-
Vietnam	NIID	0	-	-	-	-	-	-	-	-	-	-
Total		268	100	0	95	0	73	0	0	13	3	0

¹ Acronyms:

CCDC - Chinese Center for Disease Control and Prevention
VIDRL - Victorian Infectious Diseases Reference Laboratory, Australia
NIID - National Institute of Infectious Diseases, Japan
PHLC - Public Health Laboratory Centre, Hong Kong
SGH - Singapore General Hospital

² ITD Results:

S - Sabin; **W** - Wild

³ Pending ITD = Pending Antigenic ITD and/or Pending Molecular ITD
 Total Pending Cases = Pending ITD + Pending Sequencing

⁴ Antigenic ITD <-> Molecular ITD for all serotypes. Cases with discordant ITD results may be counted more than once under "ITD results", ie. as "discordant" and "S" or "W", depending on the results of sequencing.

⁵ Based on year of collection of sample, if available. Otherwise, based on year of receipt at reference laboratory.