

HIGHLIGHTS

Polio Update in Lao PDR

Lao People's Democratic Republic was classified as a "tier 2" risk country due to persistent polio immunity gaps which leave the country vulnerable to poliovirus importations. At the 22nd EPI TAG Meeting, all tier 2 countries were requested to complete a draft polio endgame plan completed by mid-2014. Lao PDR is the first tier 2 country in the Region to comply with this request.

To ensure high-level support for the implementation of the polio endgame in Lao PDR, in March 2014, an advocacy event was conducted. Representatives from the Lao PDR National Immunization Program, WPRO, and other partner organizations met with the Vice Minister of Health to brief her on the activities called for by the Polio Endgame. Following the meeting, a timeline with key activities pertaining to the polio endgame was proposed by the National Immunization Program and was validated by the Vice Minister.

Following this meeting, in April 2014, Lao PDR submitted its application to the GAVI to support the introduction of the inactivated poliovirus vaccine (IPV) in October 2015. Additionally, in early June, the National Immunization Program (NIP) and National Center for Laboratory and Epidemiology (NCLE), with support from partners, developed a comprehensive Polio Endgame Plan for Lao PDR for 2014-2018. This plan outlines the key areas of emphasis and actions to be taken relevant to the polio program including: (1) surveillance, (2) boosting population immunity, introducing IPV, and switching from OPV to bOPV, (3) containment and certification, and (4) the polio legacy.

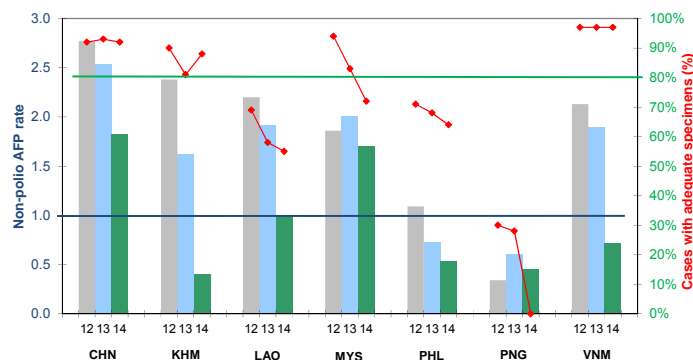
Special congratulations to the NIP and NCLE for their hard work to ensure the timely initiation of the Polio Endgame and continued efforts to protect the children of Lao PDR by keeping polio-free.



CONTACT US

Expanded Programme on Immunization
Regional Office for the Western Pacific
World Health Organization
P.O. Box 2932, 1000 Manila, Philippines
Phone: +63 2 5288001
Fax: +63 2 5211036, 5260279
Email: WPR_EPIdata@wpro.who.int
Web: www.wpro.who.int/immunization

Chart 1. Non-polio AFP rate and adequate specimen collection rate, 2012–2014*



* AFP rate annualized as of week 23

Chart 3. Polio immunization status of reported AFP cases, 2014

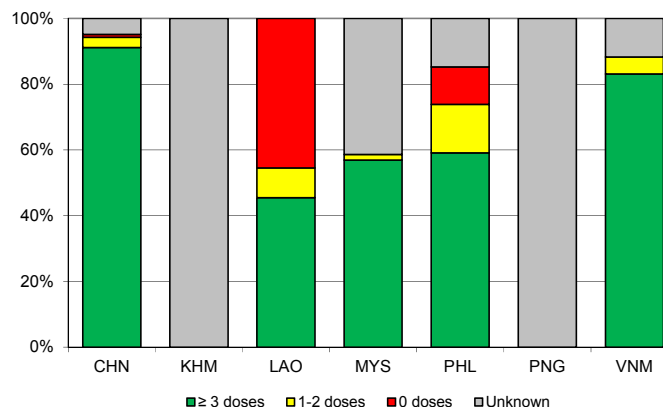


Chart 2. Percent cases with pending classification > 90 days after onset, 2014

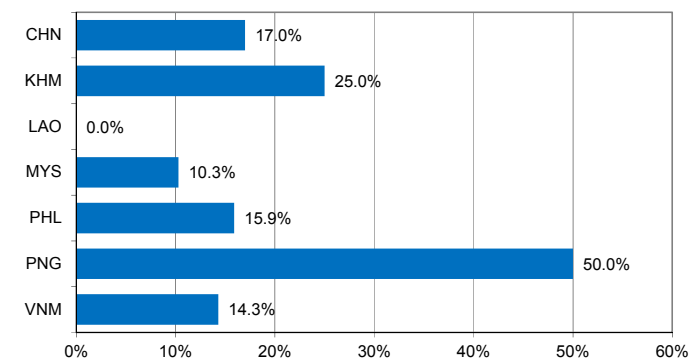
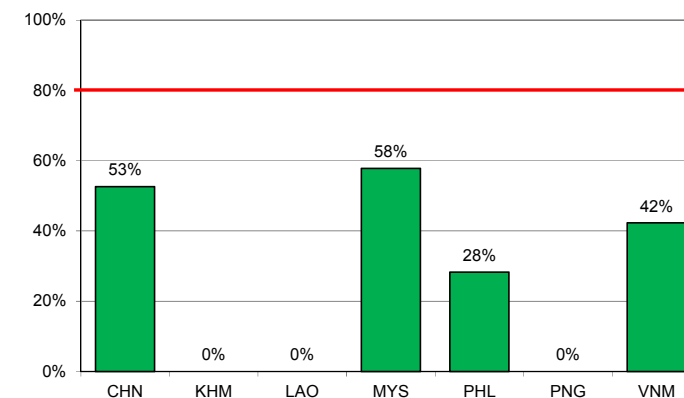


Chart 4. Percentage of samples received at the lab ≤ 3 days of collection, 2014



Note: Priority countries were selected for the charts. Official WHO acronyms have been used for abbreviation: CHN (China), KHM (Cambodia), LAO (Lao People's Democratic Republic), MYS (Malaysia), PHL (Philippines), PNG (Papua New Guinea), and VNM (Viet Nam).

Table 1A. Classification of AFP cases with onset in 2013 and key surveillance indicators

	2012		2013													
	Total reported cases	Annual expected cases <15 years of age	Total reported cases	Classification						Indicators					Latest report date ⁶	Days since last report ⁷
				Confirmed wild poliovirus	Vaccine-derived poliovirus (VDPV)	Polio-compatible	Discarded (Non-polio)	Pending		Non-polio AFP rate	% with adequate specimens ²	% with any specimen ³	% investigated ≤ 2 days of notification ⁴	% with 60-day follow-up ⁵		
								Total	> 90 days ¹ # (%)							
≥ 1	≥ 80%		≥ 80%	≥ 80%												
Australia	56	43	62	0	0	1	61	0	0 (0.0%)	1.44	39%	71%	100%	0%	08-Apr-14	-
Brunei Darussalam	1	1	1	0	0	0	1	0	0 (0.0%)	1.00	100%	100%	100%	-	06-Feb-14	-
Cambodia	107	45	73	0	0	0	73	0	0 (0.0%)	1.62	81%	96%	78%	100%	13-Mar-14	-
China	6173	2225	5623	0	0	1	5622	0	0 (0.0%)	2.53	93%	99%	100%	98%	28-May-14	-
Hong Kong (China)	14	8	12	0	0	0	12	0	0 (0.0%)	1.50	100%	100%	100%	-	06-Feb-14	-
Japan	0	167	0	-	-	-	-	-	-	-	-	-	-	-	-	-
Lao People's Democratic Republic	55	25	48	0	0	0	48	0	0 (0.0%)	1.92	58%	90%	98%	100%	26-May-14	-
Macao (China)	0	1	1	0	0	0	1	0	0 (0.0%)	1.00	100%	100%	100%	-	14-Jan-14	-
Malaysia	141	77	155	0	0	0	155	0	0 (0.0%)	2.01	83%	100%	85%	100%	31-Mar-14	-
Mongolia	9	7	7	0	0	0	7	0	0 (0.0%)	1.00	86%	100%	100%	100%	07-Mar-14	-
New Zealand	8	9	12	0	0	0	12	0	0 (0.0%)	1.33	50%	83%	83%	100%	27-Feb-14	-
Papua New Guinea	10	30	18	0	0	0	18	0	0 (0.0%)	0.60	28%	83%	83%	100%	26-Feb-14	-
Philippines	403	378	277	0	0	2	275	0	0 (0.0%)	0.73	68%	96%	98%	50%	08-Apr-14	-
Republic of Korea	95	76	84	0	0	0	84	0	0 (0.0%)	1.11	93%	100%	94%	100%	20-Mar-14	-
Singapore	10	6	7	0	0	0	7	0	0 (0.0%)	1.17	71%	100%	86%	100%	08-Jan-14	-
Viet Nam	514	241	459	0	0	0	459	0	0 (0.0%)	1.90	97%	99%	92%	100%	17-Apr-14	-
Pacific island countries	4	10	8	0	0	0	7	1	1 (12.5%)	0.80	63%	100%	100%	67%	14-May-14	26
Total	7600	3349	6847	0	0	4	6842	1	1 (0.0%)	2.04	91%	99%	98%	86%		

1. Number (%) of reported cases pending classification more than 90 days from date of onset of paralysis to date of last report
2. Percentage of reported cases with two stool specimens collected 24 hours apart and within 14 days of onset of paralysis
3. Percentage of reported cases with at least one specimen
4. Percentage of reported cases investigated within two days of notification
5. Percentage of reported cases with inadequate specimens followed-up within 60 days of onset of paralysis
6. Report date is fixed as soon as all cases for the year have been classified
7. Countries are expected to submit data at least once per month to WPRO

Green	Reached or surpassed target
Yellow	Nearly reached target: 0.5–0.99 for non-polio AFP rate; 60–79% for other indicators
Red	Substantially below target

Table 1B. Classification of AFP cases with onset in 2014 and key surveillance indicators

	2013		2014													
	Total reported cases	Annual expected cases <15 years of age	Total reported cases	Classification						Indicators					Latest report date	Days since last report ⁷
				Confirmed wild poliovirus	Vaccine-derived poliovirus (VDPV)	Polio-compatible	Discarded (Non-polio)	Pending		Non-polio AFP rate ²	% with adequate specimens ³	% with any specimen ⁴	% investigated ≤ 2 days of notification ⁵	% with 60-day follow-up ⁶		
								Total	> 90 days ¹ # (%)							
≥ 1	≥ 80%		≥ 80%	≥ 80%												
Australia	62	44	19	0	0	0	7	12	2 (10.5%)	0.98	32%	58%	84%	0%	23-May-14	17
Brunei Darussalam	1	1	0	-	-	-	-	-	-	-	-	-	-	-	06-Feb-14	123
Cambodia	73	45	8	0	0	0	0	8	2 (25.0%)	0.40	88%	100%	100%	0%	02-May-14	38
China	5623	2225	1793	0	0	0	653	1140	305 (17.0%)	1.82	92%	98%	100%	71%	04-Jun-14	5
Hong Kong (China)	12	8	8	0	0	0	7	1	1 (12.5%)	2.26	88%	100%	100%	100%	03-Jun-14	6
Japan	0	167	0	-	-	-	-	-	-	-	-	-	-	-	-	-
Lao People's Democratic Republic	48	25	11	0	0	0	5	6	0 (0.0%)	0.99	55%	100%	91%	0%	06-May-14	34
Macao (China)	1	1	0	-	-	-	-	-	-	-	-	-	-	-	20-May-14	20
Malaysia	155	77	58	0	0	0	36	22	6 (10.3%)	1.70	72%	100%	57%	25%	22-May-14	18
Mongolia	7	8	3	0	0	0	1	2	0 (0.0%)	0.85	100%	100%	100%	-	09-Jun-14	0
New Zealand	12	9	2	0	0	0	0	2	1 (50.0%)	0.50	50%	100%	100%	0%	16-May-14	24
Papua New Guinea	18	30	6	0	0	0	0	6	3 (50.0%)	0.45	0%	100%	50%	0%	07-May-14	33
Philippines	277	378	88	0	0	0	19	69	14 (15.9%)	0.53	64%	93%	95%	3%	12-May-14	28
Republic of Korea	84	76	31	0	0	0	29	2	0 (0.0%)	0.92	77%	100%	94%	86%	16-May-14	24
Singapore	7	6	4	0	0	0	4	0	0 (0.0%)	1.51	75%	100%	100%	100%	03-Jun-14	6
Viet Nam	459	241	77	0	0	0	13	64	11 (14.3%)	0.72	97%	100%	88%	0%	26-May-14	14
Pacific island countries	8	10	3	0	0	0	0	3	2 (66.7%)	0.68	67%	100%	100%	0%	14-May-14	26
Total	6847	3351	2111	0	0	0	774	1337	347 (16.4%)	1.42	89%	98%	98%	51%		

1. Number (%) of reported cases pending classification more than 90 days from date of onset of paralysis to date of last report
2. Annualized non-polio AFP rate per 100 000 population under 15 years of age
3. Percentage of reported cases with two stool specimens collected 24 hours apart and within 14 days of onset of paralysis
4. Percentage of reported cases with at least one specimen
5. Percentage of reported cases investigated within two days of notification
6. Percentage of reported cases with inadequate specimens followed-up within 60 days of onset of paralysis
7. Countries are expected to submit data at least once per month to WPRO

Green	Reached or surpassed target
Yellow	Nearly reached target: 0.5–0.99 for non-polio AFP rate; 60–79% for other indicators
Red	Substantially below target

Table 2A. Laboratory investigation of AFP cases with onset in 2013 and key laboratory indicators

Country	National polio laboratory ¹	Total no. of AFP cases with specimens	Virus isolation results							% specimens positive for NPEV	Latest report date	Intratyphic differentiation / Sequencing lab ¹	No. of isolates referred	Intratyphic differentiation (ITD) results									NPEV ³	Pending ITD	Discordant pending sequencing	% ITD results reported ≤ 7 days of receipt ≥ 80%					
			L20B positive	L20B positive + NPEV	NPEV only	Negative	Pending ≤ 14 days	Pending > 14 days	% results reported ≤ 14 days ²					Type 1			Type 2			Type 3											
														Wild	Sabin	VDPV	Wild	Sabin	VDPV	Wild	Sabin	VDPV									
Australia	VIDRL	44	0	0	9	35	0	0	100%	20%	29-Jan-14	VIDRL	0	-	-	-	-	-	-	-	-	-	-	-	-	-	-	-	-		
Brunei Darussalam	VIDRL	1	0	0	0	1	0	0	100%	0%	29-Jan-14	VIDRL	0	-	-	-	-	-	-	-	-	-	-	-	-	-	-	-	-	-	
Papua New Guinea	VIDRL	18	0	0	3	15	0	0	100%	16%	29-Jan-14	VIDRL	0	-	-	-	-	-	-	-	-	-	-	-	-	-	-	-	-	-	
Pacific island countries	VIDRL	8	0	0	4	4	0	0	100%	44%	29-Jan-14	VIDRL	0	-	-	-	-	-	-	-	-	-	-	-	-	-	-	-	-	-	
Japan	NIID	0	-	-	-	-	-	-	-	-	-	NIID	0	-	-	-	-	-	-	-	-	-	-	-	-	-	-	-	-	-	
Cambodia	NIID	70	1	0	21	48	0	0	94%	24%	12-Feb-14	NIID	2	0	0	0	0	2	0	0	0	0	0	0	0	0	0	0	100%		
Lao People's Democratic Republic	NIID	43	0	0	10	33	0	0	97%	21%	02-Apr-14	NIID	0	-	-	-	-	-	-	-	-	-	-	-	-	-	-	-	-	-	
Malaysia	IMR	156	0	0	7	149	0	0	98%	3%	25-Feb-14	IMR	0	-	-	-	-	-	-	-	-	-	-	-	-	-	-	-	-	-	
Mongolia	PHI	7	0	0	1	6	0	0	100%	14%	11-Feb-14	NIID	0	-	-	-	-	-	-	-	-	-	-	-	-	-	-	-	-	-	
New Zealand	IESR	9	0	0	2	7	0	0	94%	22%	17-Mar-14	IESR	0	-	-	-	-	-	-	-	-	-	-	-	-	-	-	-	-	-	
Philippines	RITM	366	0	1	40	325	0	0	95%	9%	08-May-14	VIDRL	3	0	1	0	0	1	0	0	1	0	0	0	0	0	0	0	100%		
Republic of Korea	NIH	83	0	0	2	81	0	0	100%	3%	18-Feb-14	NIID	0	-	-	-	-	-	-	-	-	-	-	-	-	-	-	-	-	-	
Singapore	SGH	7	1	0	0	6	0	0	100%	0%	15-Jan-14	SGH	2	0	0	0	0	2	0	0	0	0	0	0	0	0	0	0	100%		
Viet Nam, North	NIHE	229	2	0	41	186	0	0	95%	15%	11-Feb-14	NIID	4	0	0	0	0	2	0	0	2	0	0	0	0	0	0	0	100%		
Viet Nam, South	PI	225	2	0	21	208	0	0	98%	9%	18-Mar-14	NIID	4	0	2	0	0	0	0	0	2	0	0	0	0	0	0	0	100%		
China	CCDC	5570	100	3	582	4885	0	0	60%	9%	14-May-14		261	0	71	0	0	95	4	0	77	14	3	0	0	0	0	100%			
China, Anhui	Prov. Lab	268	4	0	35	229	0	0	52%	11%		Prov. Lab	12	0	3	0	0	4	0	0	5	0	0	0	0	0	0	0	100%		
China, Beijing	Prov. Lab	31	1	0	0	30	0	0	77%	0%		Prov. Lab	15	0	6	0	0	6	0	0	3	0	0	0	0	0	0	0	0	100%	
China, Fujian	Prov. Lab	161	4	0	16	141	0	0	80%	7%		Prov. Lab	8	0	2	0	0	3	0	0	3	0	0	0	0	0	0	0	0	100%	
China, Gansu	Prov. Lab	112	4	0	6	102	0	0	73%	5%		Prov. Lab	12	0	1	0	0	6	0	0	5	0	0	0	0	0	0	0	0	100%	
China, Guangdong	Prov. Lab	377	2	0	37	338	0	0	60%	8%		Prov. Lab	10	0	4	0	0	4	0	0	2	0	0	0	0	0	0	0	0	100%	
China, Guangxi	Prov. Lab	248	4	0	28	216	0	0	20%	9%		Prov. Lab	13	0	3	0	0	4	0	0	6	0	0	0	0	0	0	0	0	100%	
China, Hebei	Prov. Lab	387	12	2	62	311	0	0	64%	13%		Prov. Lab	18	0	9	0	0	3	0	0	6	0	0	0	0	0	0	0	0	100%	
China, Heilongjiang	Prov. Lab	128	3	0	7	118	0	0	79%	5%		Prov. Lab	4	0	1	0	0	0	0	0	3	0	0	0	0	0	0	0	0	100%	
China, Henan	Prov. Lab	576	13	0	103	460	0	0	55%	14%		Prov. Lab	27	0	6	0	0	14	0	0	7	0	0	0	0	0	0	0	0	100%	
China, Hunan	Prov. Lab	297	2	0	41	254	0	0	90%	13%		Prov. Lab	4	0	0	0	0	2	0	0	2	0	0	0	0	0	0	0	0	100%	
China, Jiangsu	Prov. Lab	289	9	0	7	273	0	0	43%	2%		Prov. Lab	11	0	9	0	0	1	0	0	1	0	0	0	0	0	0	0	0	100%	
China, Jiangxi	Prov. Lab	190	2	0	14	174	0	0	70%	7%		Prov. Lab	31	0	0	0	0	11	4	0	2	14	0	0	0	0	0	0	0	100%	
China, Jilin	Prov. Lab	64	0	0	3	61	0	0	61%	5%		Prov. Lab	0	-	-	-	-	-	-	-	-	-	-	-	-	-	-	-	-	-	
China, Shaanxi	Prov. Lab	110	1	0	2	107	0	0	91%	2%		Prov. Lab	0	-	-	-	-	-	-	-	-	-	-	-	-	-	-	-	-	-	
China, Shandong	Prov. Lab	389	17	0	32	340	0	0	69%	6%		Prov. Lab	31	0	9	0	0	11	0	0	11	0	0	0	0	0	0	0	0	100%	
China, Shanghai	Prov. Lab	28	2	0	0	26	0	0	98%	0%		Prov. Lab	10	0	4	0	0	6	0	0	0	0	0	0	0	0	0	0	0	100%	
China, Shanxi	Prov. Lab	212	3	0	9	200	0	0	42%	4%		Prov. Lab	6	0	2	0	0	2	0	0	2	0	2	0	0	0	0	0	0	100%	
China, Sichuan	Prov. Lab	357	0	0	39	318	0	0	32%	10%		Prov. Lab	0	-	-	-	-	-	-	-	-	-	-	-	-	-	-	-	-	-	
China, Tianjin	Prov. Lab	23	1	0	1	21	0	0	87%	4%		Prov. Lab	2	0	0	0	0	2	0	0	0	0	0	0	0	0	0	0	0	100%	
China, Xinjiang	Prov. Lab	86	5	0	6	75	0	0	81%	6%		Prov. Lab	12	0	2	0	0	7	0	0	3	0	0	0	0	0	0	0	0	100%	
China, Yunnan	Prov. Lab	255	2	1	30	222	0	0	74%	10%		Prov. Lab	5	0	1	0	0	0	0	0	4	0	0	0	0	0	0	0	0	100%	
China, Zhejiang	Prov. Lab	163	3	0	19	141	0	0	37%	9%		Prov. Lab	7	0	1	0	0	2	0	0	4	0	1	0	0	0	0	0	0	100%	
China, Chongqing	Prov. Lab	82	0	0	8	74	0	0	78%	9%		CCDC	0	-	-	-	-	-	-	-	-	-	-	-	-	-	-	-	-	-	
China, Guizhou	Prov. Lab	232	0	0	23	209	0	0	74%	9%		CCDC	2	0	0	0	0	2	0	0	0	0	0	0	0	0	0	0	0	100%	
China, Hainan	Prov. Lab	41	0	0	5	36	0	0	71%	11%		CCDC	1	0	0	0	0	0	0	0	1	0	0	0	0	0	0	0	0	100%	
China, Hubei	Prov. Lab	230	3	0	31	196	0	0	40%	13%		CCDC	6	0	3	0	0	1	0	0	2	0	0	0	0	0	0	0	0	100%	
China, Liaoning	Prov. Lab	109	0	0	14	95	0	0	72%	11%		CCDC	7	0	3	0	0	2	0	0	2	0	0	0	0	0	0	0	0	100%	
China, Neimongol	Prov. Lab	80	3	0	3	74	0	0	67%	4%		CCDC	3	0	0	0	0	0	0	0	3	0	0	0	0	0	0	0	0	100%	
China, Ningxia	Prov. Lab	19	0	0	0	19	0	0	55%	0%		CCDC	4	0	2	0	0	2	0	0	0	0	0	0	0	0	0	0	0	100%	
China, Qinghai	Prov. Lab	16	0	0	1	15	0	0	63%	3%		CCDC	0	-	-	-	-	-	-	-	-	-	-	-	-	-	-	-	-	-	
China, Tibet	Prov. Lab	10	0	0	0	10	0	0	20%	0%		CCDC	0	-	-	-	-	-	-	-	-	-	-	-	-	-	-	-	-	-	
Hong Kong (China)	PHLC	12	0	0	0	12	0	0	97%	0%	16-Jan-14	PHLC	0	-	-	-	-	-	-	-	-	-	-	-	-	-	-	-	-	-	
Macao (China)	PHLC	0	-	-	-	-	-	-	-	-	16-Jan-14	PHLC	0	-	-	-	-	-	-	-	-	-	-	-	-	-	-	-	-	-	-
Total		6848	106	4	743	6001	0	0	65%	9%			276	0	74	0	0	102	4	0	82	14	3	0	0	0	0	0	100%		

1. IESR (Institute of Environmental Science and Research, New Zealand); IMR (Institute of Medical Research, Malaysia); NIH (National Institute of Health, Republic of Korea); NIHE (National Institute of Hygiene and Epidemiology, Ha Noi, Viet Nam); NIID (National Institute of Infectious Diseases, Japan); PHI (Public Health Institute, Mongolia); PHLC (Public Health Laboratory Center, Hong Kong); PI (Pasteur Institute, Ho Chi Minh, Viet Nam); RITM (Research Institute for Tropical Medicine, Philippines); SGH (Singapore General Hospital); VIDRL (Victorian Infectious Diseases Reference Laboratory, Australia)

2. The target of 14 days for the timeliness of virus isolation will be used for all polio laboratories

3. NPEV growing in L20B cells

4. Twenty-two provincial laboratories in China perform ITD from 2013

Table 2B. Laboratory investigation of AFP cases with onset in 2014 and key laboratory indicators

Country	National polio laboratory ¹	Total no. of AFP cases with specimens	Virus isolation results							% results reported ≤ 14 days ² ≥ 80%	% specimens positive for NPEV	Latest report date	Intratyphic differentiation / Sequencing lab ¹	No. of isolates referred	Intratyphic differentiation (ITD) results									NPEV ³	Pending ITD	Discordant pending sequencing	% ITD results reported ≤ 7 days of receipt ≥ 80%
			Type 1			Type 2			Type 3																		
			Wild	Sabin	VDPV	Wild	Sabin	VDPV	Wild						Sabin	VDPV											
Australia	VIDRL	4	0	0	0	4	0	0	88%	0%	14-Mar-14	VIDRL	0	-	-	-	-	-	-	-	-	-	-	-	-	-	-
Brunei Darussalam	VIDRL	0	-	-	-	-	-	-	-	-	14-Mar-14	VIDRL	0	-	-	-	-	-	-	-	-	-	-	-	-	-	-
Papua New Guinea	VIDRL	0	-	-	-	-	-	-	-	-	14-Mar-14	VIDRL	0	-	-	-	-	-	-	-	-	-	-	-	-	-	-
Pacific island countries	VIDRL	2	0	0	0	1	1	0	100%	0%	14-Mar-14	VIDRL	0	-	-	-	-	-	-	-	-	-	-	-	-	-	-
Japan	NIID	0	-	-	-	-	-	-	-	-	-	NIID	0	-	-	-	-	-	-	-	-	-	-	-	-	-	-
Cambodia	NIID	9	3	0	1	5	0	0	100%	6%	27-May-14	NIID	4	0	0	0	0	4	0	0	0	0	0	0	0	0	100%
Lao People's Democratic Republic	NIID	13	0	0	3	10	0	0	100%	19%	09-Jun-14	NIID	0	-	-	-	-	-	-	-	-	-	-	-	-	-	-
Malaysia	IMR	62	0	0	2	50	10	0	100%	4%	14-May-14	IMR	0	-	-	-	-	-	-	-	-	-	-	-	-	-	-
Mongolia	PHI	3	0	0	0	2	1	0	100%	0%	05-Jun-14	NIID	0	-	-	-	-	-	-	-	-	-	-	-	-	-	-
New Zealand	IESR	2	0	0	1	1	0	0	100%	50%	03-Jun-14	IESR	0	-	-	-	-	-	-	-	-	-	-	-	-	-	-
Philippines	RITM	123	1	0	4	106	0	13	90%	3%	30-May-14	VIDRL	0	-	-	-	-	-	-	-	-	-	-	-	-	-	-
Republic of Korea	NIH	31	0	0	0	29	2	0	93%	0%	16-May-14	NIID	0	-	-	-	-	-	-	-	-	-	-	-	-	-	-
Singapore	SGH	4	0	0	0	4	0	0	100%	0%	30-May-14	SGH	0	-	-	-	-	-	-	-	-	-	-	-	-	-	-
Viet Nam, North	NIHE	45	0	0	7	38	0	0	100%	14%	30-May-14	NIID	0	-	-	-	-	-	-	-	-	-	-	-	-	-	-
Viet Nam, South	PI	44	0	0	6	36	2	0	90%	13%	03-Jun-14	NIID	0	-	-	-	-	-	-	-	-	-	-	-	-	-	-
China	CCDC	1766	28	1	108	1578	1	50	61%	5%	04-Jun-14		84	0	25	0	0	26	2	0	31	0	0	0	0	0	100%
China, Anhui	Prov. Lab	75	1	0	0	73	0	1	50%	0%		Prov. Lab	0	-	-	-	-	-	-	-	-	-	-	-	-	-	-
China, Beijing	Prov. Lab	7	0	0	0	7	0	0	86%	0%		Prov. Lab	5	0	2	0	0	0	0	0	3	0	0	0	0	0	100%
China, Fujian	Prov. Lab	74	0	0	6	66	0	2	91%	7%		Prov. Lab	0	-	-	-	-	-	-	-	-	-	-	-	-	-	-
China, Gansu	Prov. Lab	46	1	0	0	45	0	0	71%	0%		Prov. Lab	6	0	2	0	0	2	0	0	2	0	0	0	0	0	100%
China, Guangdong	Prov. Lab	105	1	0	11	93	0	0	73%	7%		Prov. Lab	4	0	2	0	0	2	0	0	0	0	0	0	0	0	100%
China, Guangxi	Prov. Lab	73	0	0	13	60	0	0	5%	16%		Prov. Lab	0	-	-	-	-	-	-	-	-	-	-	-	-	-	-
China, Hebei	Prov. Lab	93	0	1	5	86	0	1	53%	4%		Prov. Lab	2	0	2	0	0	0	0	0	0	0	0	0	0	0	100%
China, Heilongjiang	Prov. Lab	49	0	0	0	45	0	4	82%	0%		Prov. Lab	0	-	-	-	-	-	-	-	-	-	-	-	-	-	-
China, Henan	Prov. Lab	171	1	0	12	156	0	2	73%	5%		Prov. Lab	2	0	0	0	0	0	0	0	2	0	0	0	0	0	100%
China, Hunan	Prov. Lab	70	1	0	7	60	0	2	81%	10%		Prov. Lab	0	-	-	-	-	-	-	-	-	-	-	-	-	-	-
China, Jiangsu	Prov. Lab	90	4	0	1	80	0	5	29%	1%		Prov. Lab	12	0	4	0	0	4	0	0	4	0	0	0	0	0	100%
China, Jiangxi	Prov. Lab	58	0	0	3	50	0	5	87%	5%		Prov. Lab	0	-	-	-	-	-	-	-	-	-	-	-	-	-	-
China, Jilin	Prov. Lab	19	0	0	0	19	0	0	82%	0%		Prov. Lab	0	-	-	-	-	-	-	-	-	-	-	-	-	-	-
China, Shaanxi	Prov. Lab	19	0	0	1	18	0	0	66%	5%		Prov. Lab	0	-	-	-	-	-	-	-	-	-	-	-	-	-	-
China, Shandong	Prov. Lab	146	1	0	5	132	1	7	64%	3%		Prov. Lab	4	0	2	0	0	0	0	0	2	0	0	0	0	0	100%
China, Shanghai	Prov. Lab	14	2	0	0	12	0	0	96%	0%		Prov. Lab	2	0	0	0	0	0	0	0	2	0	0	0	0	0	100%
China, Shanxi	Prov. Lab	84	2	0	0	82	0	0	39%	0%		Prov. Lab	8	0	0	0	0	4	2	0	2	0	0	0	0	0	100%
China, Sichuan	Prov. Lab	116	1	0	12	102	0	1	25%	9%		Prov. Lab	3	0	2	0	0	1	0	0	0	0	0	0	0	0	100%
China, Tianjin	Prov. Lab	9	0	0	2	7	0	0	89%	17%		Prov. Lab	0	-	-	-	-	-	-	-	-	-	-	-	-	-	-
China, Xinjiang	Prov. Lab	29	1	0	0	25	0	3	96%	0%		Prov. Lab	4	0	2	0	0	2	0	0	0	0	0	0	0	0	100%
China, Yunnan	Prov. Lab	89	11	0	9	69	0	0	50%	8%		Prov. Lab	24	0	7	0	0	7	0	0	10	0	0	0	0	0	100%
China, Zhejiang	Prov. Lab	60	0	0	4	56	0	0	48%	6%		Prov. Lab	0	-	-	-	-	-	-	-	-	-	-	-	-	-	-
China, Chongqing	Prov. Lab	31	0	0	3	26	0	2	81%	7%		CCDC	2	0	0	0	0	2	0	0	0	0	0	0	0	0	100%
China, Guizhou	Prov. Lab	73	1	0	5	62	0	5	82%	7%		CCDC	4	0	0	0	0	2	0	0	2	0	0	0	0	0	100%
China, Hainan	Prov. Lab	8	0	0	2	6	0	0	63%	25%		CCDC	0	-	-	-	-	-	-	-	-	-	-	-	-	-	-
China, Hubei	Prov. Lab	59	0	0	7	49	0	3	53%	13%		CCDC	0	-	-	-	-	-	-	-	-	-	-	-	-	-	-
China, Liaoning	Prov. Lab	46	0	0	0	41	0	5	88%	0%		CCDC	2	0	0	0	0	0	0	0	2	0	0	0	0	0	100%
China, Neimongol	Prov. Lab	33	0	0	0	31	0	2	84%	0%		CCDC	0	-	-	-	-	-	-	-	-	-	-	-	-	-	-
China, Ningxia	Prov. Lab	15	0	0	0	15	0	0	70%	0%		CCDC	0	-	-	-	-	-	-	-	-	-	-	-	-	-	-
China, Qinghai	Prov. Lab	4	0	0	0	4	0	0	100%	0%		CCDC	0	-	-	-	-	-	-	-	-	-	-	-	-	-	-
China, Tibet	Prov. Lab	1	0	0	0	1	0	0	0%	0%		CCDC	0	-	-	-	-	-	-	-	-	-	-	-	-	-	-
Hong Kong (China)	PHLC	7	0	0	0	7	0	0	95%	0%	28-May-14	PHLC	0	-	-	-	-	-	-	-	-	-	-	-	-	-	-
Macao (China)	PHLC	0	-	-	-	-	-	-	-	-	28-May-14	PHLC	0	-	-	-	-	-	-	-	-	-	-	-	-	-	-
Total		2115	32	1	132	1871	17	63	64%	5%			88	0	25	0	0	30	2	0	31	0	0	0	0	0	100%

1. IESR (Institute of Environmental Science and Research, New Zealand); IMR (Institute of Medical Research, Malaysia); NIH (National Institute of Health, Republic of Korea); NIHE (National Institute of Hygiene and Epidemiology, Ha Noi, Viet Nam); NIID (National Institute of Infectious Diseases, Japan); PHI (Public Health Institute, Mongolia); PHLC (Public Health Laboratory Center, Hong Kong); PI (Pasteur Institute, Ho Chi Minh, Viet Nam); RITM (Research Institute for Tropical Medicine, Philippines); SGH (Singapore General Hospital); VIDRL (Victorian Infectious Diseases Reference Laboratory, Australia)

2. The target of 14 days for the timeliness of virus isolation will be used for all polio laboratories

3. NPEV growing in L20B cells

4. Twenty-two provincial laboratories in China perform ITD from 2013

Table 3A. Laboratory confirmation of polio isolates from other sources in 2013 ¹

Country	Intratyphic differentiation lab. ²	Non-AFP cases													Environmental samples																					
		Total number of non-AFP cases tested for polio	Total number of non-AFP cases with polio isolates	Type 1			Type 2			Type 3			NPEV grown in L20B	Pending ITD	Discordant pending sequencing	Total number of samples processed	Total number of samples with polio isolates	Type 1			Type 2			Type 3			NPEV grown in L20B	Pending ITD	Discordant pending sequencing							
				Wild	Sabin	VDPV	Wild	Sabin	VDPV	Wild	Sabin	VDPV						Wild	Sabin	VDPV	Wild	Sabin	VDPV	Wild	Sabin	VDPV										
Australia	VIDRL	269	1	0	0	0	0	1	0	0	0	0	0	0	0	0	0	-	-	-	-	-	-	-	-	-	-	-	-	-	-	-	-	-	-	-
Japan	NIID	0	-	-	-	-	-	-	-	-	-	-	-	-	-	-	-	0	-	-	-	-	-	-	-	-	-	-	-	-	-	-	-	-	-	
Malaysia	IMR	0	-	-	-	-	-	-	-	-	-	-	-	-	-	-	33	4	0	1	0	0	2	0	0	1	0	27	0	0	-	-	-	-		
Mongolia	PHI	158	0	0	0	0	0	0	0	0	0	0	56	0	0	0	-	-	-	-	-	-	-	-	-	-	-	-	-	-	-	-	-	-		
New Zealand	IESR	0	-	-	-	-	-	-	-	-	-	-	-	-	-	-	0	-	-	-	-	-	-	-	-	-	-	-	-	-	-	-	-	-	-	
Philippines	VIDRL	6	6	0	5	0	0	1	0	0	1	0	0	0	0	0	0	-	-	-	-	-	-	-	-	-	-	-	-	-	-	-	-	-	-	
Republic of Korea	NIID	0	-	-	-	-	-	-	-	-	-	-	-	-	-	-	0	-	-	-	-	-	-	-	-	-	-	-	-	-	-	-	-	-	-	
Singapore	SGH	0	-	-	-	-	-	-	-	-	-	-	-	-	-	-	0	-	-	-	-	-	-	-	-	-	-	-	-	-	-	-	-	-	-	
Viet Nam, North	NIID	0	-	-	-	-	-	-	-	-	-	-	-	-	-	-	0	-	-	-	-	-	-	-	-	-	-	-	-	-	-	-	-	-	-	
Viet Nam, South	NIID	0	-	-	-	-	-	-	-	-	-	-	-	-	-	-	0	-	-	-	-	-	-	-	-	-	-	-	-	-	-	-	-	-	-	
China (total)		28	28	0	15	0	0	11	1	0	13	0	0	0	0	0	0	-	-	-	-	-	-	-	-	-	-	-	-	-	-	-	-	-	-	
China, Anhui	Prov. Lab	0	-	-	-	-	-	-	-	-	-	-	-	-	-	-	0	-	-	-	-	-	-	-	-	-	-	-	-	-	-	-	-	-	-	
China, Beijing	Prov. Lab	0	-	-	-	-	-	-	-	-	-	-	-	-	-	-	0	-	-	-	-	-	-	-	-	-	-	-	-	-	-	-	-	-	-	
China, Fujian	Prov. Lab	0	-	-	-	-	-	-	-	-	-	-	-	-	-	-	0	-	-	-	-	-	-	-	-	-	-	-	-	-	-	-	-	-	-	
China, Gansu	Prov. Lab	7	7	0	7	0	0	4	0	0	4	0	0	0	0	0	0	-	-	-	-	-	-	-	-	-	-	-	-	-	-	-	-	-	-	
China, Guangdong	Prov. Lab	1	1	0	0	0	0	0	1	0	0	0	0	0	0	0	0	-	-	-	-	-	-	-	-	-	-	-	-	-	-	-	-	-	-	
China, Guangxi	Prov. Lab	0	-	-	-	-	-	-	-	-	-	-	-	-	-	-	0	-	-	-	-	-	-	-	-	-	-	-	-	-	-	-	-	-	-	
China, Hebei	Prov. Lab	2	2	0	2	0	0	0	0	0	0	0	0	0	0	0	0	-	-	-	-	-	-	-	-	-	-	-	-	-	-	-	-	-	-	
China, Heilongjiang	Prov. Lab	2	2	0	0	0	0	0	0	0	2	0	0	0	0	0	0	-	-	-	-	-	-	-	-	-	-	-	-	-	-	-	-	-	-	
China, Henan	Prov. Lab	0	-	-	-	-	-	-	-	-	-	-	-	-	-	-	0	-	-	-	-	-	-	-	-	-	-	-	-	-	-	-	-	-	-	
China, Hunan	Prov. Lab	0	-	-	-	-	-	-	-	-	-	-	-	-	-	-	0	-	-	-	-	-	-	-	-	-	-	-	-	-	-	-	-	-	-	
China, Jiangsu	Prov. Lab	0	-	-	-	-	-	-	-	-	-	-	-	-	-	-	0	-	-	-	-	-	-	-	-	-	-	-	-	-	-	-	-	-	-	
China, Jiangxi	Prov. Lab	2	2	0	0	0	0	1	0	0	1	0	0	0	0	0	0	-	-	-	-	-	-	-	-	-	-	-	-	-	-	-	-	-	-	
China, Jilin	Prov. Lab	0	-	-	-	-	-	-	-	-	-	-	-	-	-	-	0	-	-	-	-	-	-	-	-	-	-	-	-	-	-	-	-	-	-	
China, Shaanxi	Prov. Lab	0	-	-	-	-	-	-	-	-	-	-	-	-	-	-	0	-	-	-	-	-	-	-	-	-	-	-	-	-	-	-	-	-	-	
China, Shandong	Prov. Lab	2	2	0	2	0	0	1	0	0	1	0	0	0	0	0	0	-	-	-	-	-	-	-	-	-	-	-	-	-	-	-	-	-	-	
China, Shanghai	Prov. Lab	2	2	0	1	0	0	0	0	0	1	0	0	0	0	0	0	-	-	-	-	-	-	-	-	-	-	-	-	-	-	-	-	-	-	
China, Shanxi	Prov. Lab	0	-	-	-	-	-	-	-	-	-	-	-	-	-	-	0	-	-	-	-	-	-	-	-	-	-	-	-	-	-	-	-	-	-	
China, Sichuan	Prov. Lab	2	2	0	1	0	0	0	0	0	1	0	0	0	0	0	0	-	-	-	-	-	-	-	-	-	-	-	-	-	-	-	-	-	-	
China, Tianjin	Prov. Lab	1	1	0	1	0	0	0	0	0	1	0	0	0	0	0	0	-	-	-	-	-	-	-	-	-	-	-	-	-	-	-	-	-	-	
China, Xinjiang	Prov. Lab	2	2	0	0	0	0	2	0	0	0	0	0	0	0	0	0	-	-	-	-	-	-	-	-	-	-	-	-	-	-	-	-	-	-	
China, Yunnan	Prov. Lab	0	-	-	-	-	-	-	-	-	-	-	-	-	-	-	0	-	-	-	-	-	-	-	-	-	-	-	-	-	-	-	-	-	-	
China, Zhejiang	Prov. Lab	0	-	-	-	-	-	-	-	-	-	-	-	-	-	-	0	-	-	-	-	-	-	-	-	-	-	-	-	-	-	-	-	-	-	
China, Chongqing	CCDC	0	-	-	-	-	-	-	-	-	-	-	-	-	-	-	0	-	-	-	-	-	-	-	-	-	-	-	-	-	-	-	-	-	-	
China, Guizhou	CCDC	0	-	-	-	-	-	-	-	-	-	-	-	-	-	-	0	-	-	-	-	-	-	-	-	-	-	-	-	-	-	-	-	-	-	
China, Hainan	CCDC	1	1	0	0	0	0	1	0	0	0	0	0	0	0	0	0	-	-	-	-	-	-	-	-	-	-	-	-	-	-	-	-	-	-	
China, Hubei	CCDC	0	-	-	-	-	-	-	-	-	-	-	-	-	-	-	0	-	-	-	-	-	-	-	-	-	-	-	-	-	-	-	-	-	-	
China, Liaoning	CCDC	0	-	-	-	-	-	-	-	-	-	-	-	-	-	-	0	-	-	-	-	-	-	-	-	-	-	-	-	-	-	-	-	-	-	
China, Neimongol	CCDC	3	3	0	0	0	0	1	0	0	2	0	0	0	0	0	0	-	-	-	-	-	-	-	-	-	-	-	-	-	-	-	-	-	-	
China, Ningxia	CCDC	1	1	0	1	0	0	1	0	0	0	0	0	0	0	0	0	-	-	-	-	-	-	-	-	-	-	-	-	-	-	-	-	-	-	
China, Qinghai	CCDC	0	-	-	-	-	-	-	-	-	-	-	-	-	-	-	0	-	-	-	-	-	-	-	-	-	-	-	-	-	-	-	-	-	-	
China, Tibet	CCDC	0	-	-	-	-	-	-	-	-	-	-	-	-	-	-	0	-	-	-	-	-	-	-	-	-	-	-	-	-	-	-	-	-	-	
Hong Kong (China)	PHLC	1	1	0	1	0	0	0	0	0	0	0	0	0	0	0	0	-	-	-	-	-	-	-	-	-	-	-	-	-	-	-	-	-	-	
Total		462	36	0	21	0	0	13	1	0	14	0	56	0	0	33	4	0	1	0	0	2	0	0	1	0	27	0	0	0	0	0	0	0		

1. Based on year of collection of sample, if available. Otherwise, based on year of receipt at reference laboratory.

2. CCDC (Chinese Center for Disease Control and Prevention, China); IESR (Institute of Environmental Science and Research, New Zealand); IMR (Institute of Medical Research, Malaysia); NIID (National Institute of Infectious Diseases, Japan); PHI (Public Health Institute, Mongolia); PHLC (Public Health Laboratory Center, Hong Kong); SGH (Singapore General Hospital); VIDRL (Victorian Infectious Diseases Reference Laboratory, Australia)

Table 3B. Laboratory confirmation of polio isolates from other sources in 2014¹

Country	Intratyptic differentiation lab. ²	Non-AFP cases													Environmental samples																				
		Total number of non-AFP cases tested for polio	Total number of non-AFP cases with polio isolates	Type 1			Type 2			Type 3			NPEV grown in L20B	Pending ITD	Discordant pending sequencing	Total number of samples processed	Total number of samples with polio isolates	Type 1			Type 2			Type 3			NPEV grown in L20B	Pending ITD	Discordant pending sequencing						
				Wild	Sabin	VDPV	Wild	Sabin	VDPV	Wild	Sabin	VDPV						Wild	Sabin	VDPV	Wild	Sabin	VDPV	Wild	Sabin	VDPV									
Australia	VIDRL	10	0	0	0	0	0	0	0	0	0	0	0	0	0	0	0	-	-	-	-	-	-	-	-	-	-	-	-	-	-	-	-	-	-
Japan	NIID	0	-	-	-	-	-	-	-	-	-	-	-	-	-	-	-	0	-	-	-	-	-	-	-	-	-	-	-	-	-	-	-	-	
Malaysia	IMR	0	-	-	-	-	-	-	-	-	-	-	-	-	-	-	-	0	-	-	-	-	-	-	-	-	-	-	-	-	-	-	-	-	
Mongolia	PHI	70	0	0	0	0	0	0	0	0	0	0	6	0	0	0	0	-	-	-	-	-	-	-	-	-	-	-	-	-	-	-	-	-	
New Zealand	IESR	0	-	-	-	-	-	-	-	-	-	-	-	-	-	-	-	0	-	-	-	-	-	-	-	-	-	-	-	-	-	-	-	-	
Philippines	VIDRL	0	-	-	-	-	-	-	-	-	-	-	-	-	-	-	-	0	-	-	-	-	-	-	-	-	-	-	-	-	-	-	-	-	
Republic of Korea	NIID	0	-	-	-	-	-	-	-	-	-	-	-	-	-	-	-	0	-	-	-	-	-	-	-	-	-	-	-	-	-	-	-	-	
Singapore	SGH	0	-	-	-	-	-	-	-	-	-	-	-	-	-	-	-	0	-	-	-	-	-	-	-	-	-	-	-	-	-	-	-	-	
Viet Nam, North	NIID	0	-	-	-	-	-	-	-	-	-	-	-	-	-	-	-	0	-	-	-	-	-	-	-	-	-	-	-	-	-	-	-	-	
Viet Nam, South	NIID	1	0	0	0	0	0	0	0	0	0	0	0	0	0	0	0	0	-	-	-	-	-	-	-	-	-	-	-	-	-	-	-	-	
China (total)		1	1	0	1	0	0	0	0	0	0	0	0	0	0	0	0	0	-	-	-	-	-	-	-	-	-	-	-	-	-	-	-	-	
China, Anhui	Prov. Lab	0	-	-	-	-	-	-	-	-	-	-	-	-	-	-	-	0	-	-	-	-	-	-	-	-	-	-	-	-	-	-	-	-	
China, Beijing	Prov. Lab	0	-	-	-	-	-	-	-	-	-	-	-	-	-	-	-	0	-	-	-	-	-	-	-	-	-	-	-	-	-	-	-	-	
China, Fujian	Prov. Lab	0	-	-	-	-	-	-	-	-	-	-	-	-	-	-	-	0	-	-	-	-	-	-	-	-	-	-	-	-	-	-	-	-	
China, Gansu	Prov. Lab	0	-	-	-	-	-	-	-	-	-	-	-	-	-	-	-	0	-	-	-	-	-	-	-	-	-	-	-	-	-	-	-	-	
China, Guangdong	Prov. Lab	0	-	-	-	-	-	-	-	-	-	-	-	-	-	-	-	0	-	-	-	-	-	-	-	-	-	-	-	-	-	-	-	-	
China, Guangxi	Prov. Lab	0	-	-	-	-	-	-	-	-	-	-	-	-	-	-	-	0	-	-	-	-	-	-	-	-	-	-	-	-	-	-	-	-	
China, Hebei	Prov. Lab	0	-	-	-	-	-	-	-	-	-	-	-	-	-	-	-	0	-	-	-	-	-	-	-	-	-	-	-	-	-	-	-	-	
China, Heilongjiang	Prov. Lab	0	-	-	-	-	-	-	-	-	-	-	-	-	-	-	-	0	-	-	-	-	-	-	-	-	-	-	-	-	-	-	-	-	
China, Henan	Prov. Lab	0	-	-	-	-	-	-	-	-	-	-	-	-	-	-	-	0	-	-	-	-	-	-	-	-	-	-	-	-	-	-	-	-	
China, Hunan	Prov. Lab	0	-	-	-	-	-	-	-	-	-	-	-	-	-	-	-	0	-	-	-	-	-	-	-	-	-	-	-	-	-	-	-	-	
China, Jiangsu	Prov. Lab	0	-	-	-	-	-	-	-	-	-	-	-	-	-	-	-	0	-	-	-	-	-	-	-	-	-	-	-	-	-	-	-	-	
China, Jiangxi	Prov. Lab	0	-	-	-	-	-	-	-	-	-	-	-	-	-	-	-	0	-	-	-	-	-	-	-	-	-	-	-	-	-	-	-	-	
China, Jilin	Prov. Lab	0	-	-	-	-	-	-	-	-	-	-	-	-	-	-	-	0	-	-	-	-	-	-	-	-	-	-	-	-	-	-	-	-	
China, Shaanxi	Prov. Lab	0	-	-	-	-	-	-	-	-	-	-	-	-	-	-	-	0	-	-	-	-	-	-	-	-	-	-	-	-	-	-	-	-	
China, Shandong	Prov. Lab	0	-	-	-	-	-	-	-	-	-	-	-	-	-	-	-	0	-	-	-	-	-	-	-	-	-	-	-	-	-	-	-	-	
China, Shanghai	Prov. Lab	0	-	-	-	-	-	-	-	-	-	-	-	-	-	-	-	0	-	-	-	-	-	-	-	-	-	-	-	-	-	-	-	-	
China, Shanxi	Prov. Lab	0	-	-	-	-	-	-	-	-	-	-	-	-	-	-	-	0	-	-	-	-	-	-	-	-	-	-	-	-	-	-	-	-	
China, Sichuan	Prov. Lab	0	-	-	-	-	-	-	-	-	-	-	-	-	-	-	-	0	-	-	-	-	-	-	-	-	-	-	-	-	-	-	-	-	
China, Tianjin	Prov. Lab	0	-	-	-	-	-	-	-	-	-	-	-	-	-	-	-	0	-	-	-	-	-	-	-	-	-	-	-	-	-	-	-	-	
China, Xinjiang	Prov. Lab	0	-	-	-	-	-	-	-	-	-	-	-	-	-	-	-	0	-	-	-	-	-	-	-	-	-	-	-	-	-	-	-	-	
China, Yunnan	Prov. Lab	1	1	0	1	0	0	0	0	0	0	0	0	0	0	0	0	0	-	-	-	-	-	-	-	-	-	-	-	-	-	-	-	-	
China, Zhejiang	Prov. Lab	0	-	-	-	-	-	-	-	-	-	-	-	-	-	-	-	0	-	-	-	-	-	-	-	-	-	-	-	-	-	-	-	-	
China, Chongqing	CCDC	0	-	-	-	-	-	-	-	-	-	-	-	-	-	-	-	0	-	-	-	-	-	-	-	-	-	-	-	-	-	-	-	-	
China, Guizhou	CCDC	0	-	-	-	-	-	-	-	-	-	-	-	-	-	-	-	0	-	-	-	-	-	-	-	-	-	-	-	-	-	-	-	-	
China, Hainan	CCDC	0	-	-	-	-	-	-	-	-	-	-	-	-	-	-	-	0	-	-	-	-	-	-	-	-	-	-	-	-	-	-	-	-	
China, Hubei	CCDC	0	-	-	-	-	-	-	-	-	-	-	-	-	-	-	-	0	-	-	-	-	-	-	-	-	-	-	-	-	-	-	-	-	
China, Liaoning	CCDC	0	-	-	-	-	-	-	-	-	-	-	-	-	-	-	-	0	-	-	-	-	-	-	-	-	-	-	-	-	-	-	-	-	
China, Neimongol	CCDC	0	-	-	-	-	-	-	-	-	-	-	-	-	-	-	-	0	-	-	-	-	-	-	-	-	-	-	-	-	-	-	-	-	
China, Ningxia	CCDC	0	-	-	-	-	-	-	-	-	-	-	-	-	-	-	-	0	-	-	-	-	-	-	-	-	-	-	-	-	-	-	-	-	
China, Qinghai	CCDC	0	-	-	-	-	-	-	-	-	-	-	-	-	-	-	-	0	-	-	-	-	-	-	-	-	-	-	-	-	-	-	-	-	
China, Tibet	CCDC	0	-	-	-	-	-	-	-	-	-	-	-	-	-	-	-	0	-	-	-	-	-	-	-	-	-	-	-	-	-	-	-	-	
Hong Kong (China)	PHLC	0	-	-	-	-	-	-	-	-	-	-	-	-	-	-	-	0	-	-	-	-	-	-	-	-	-	-	-	-	-	-	-	-	
Total		82	1	0	1	0	0	0	0	0	0	0	6	0	0	0	0	0	0	0	0	0	0	0	0	0	0	0	0	0	0	0	0	0	

1. Based on year of collection of sample, if available. Otherwise, based on year of receipt at reference laboratory.

2. CCDC (Chinese Center for Disease Control and Prevention, China); IESR (Institute of Environmental Science and Research, New Zealand); IMR (Institute of Medical Research, Malaysia); NIID (National Institute of Infectious Diseases, Japan); PHI (Public Health Institute, Mongolia); PHLC (Public Health Laboratory Center, Hong Kong); SGH (Singapore General Hospital); VIDRL (Victorian Infectious Diseases Reference Laboratory, Australia)

Table 4. Vaccine-derived poliovirus, 2000–2013

Country	2000	2001	2002	2003	2004	2005	2006	2007	2008	2009	2010	2011	2012	2013
Cambodia						cVDPV3 (1 case)	cVDPV3 (1 case)							
China	aVDPV1 (1 case)	iVDPV1 (1 case) aVDPV3 (1 case)	aVDPV1 (1 case) aVDPV3 (1 case)		cVDPV1 (2 cases) ?VDPV1 (4 cases) ?VDPV2 (1 case)	iVDPV2 (1 case)	aVDPV1 (1 case) ?VDPV1 (7 cases) VDPV3 (1 case)	aVDPV1 (3 cases) ?VDPV1 (1 case)		aVDPV2 (1 case)	aVDPV2 (5 cases) aVDPV3 (2 cases)	aVDPV1 (1 case) aVDPV2 (3 cases) cVDPV2 (2 cases) iVDPV2 (2 cases) iVDPV3 (1 case)	aVDPV1 (1 case) aVDPV2 (2 cases) cVDPV2 (3 cases) iVDPV2 + iVDPV3 (1 case)	aVDPV2 (1 case) iVDPV2 + iVDPV3 (1 case)
Hong Kong (China)						?VDPV? (3 cases)								
Japan					?VDPV? (1 case)	?VDPV3 (1 case)								
Lao People's Democratic Republic					aVDPV2 (1 case) ?VDPV? (2 cases)									
Mongolia				?VDPV? (1 case)										
Philippines		cVDPV1 (3 cases)												
Viet Nam													aVDPV2 (2 cases)	