

HIGHLIGHTS

Philippines Introduces Supplemental Inactivated Polio Vaccine (IPV) in its Routine Immunization Program.

The Philippines announced on 6 October 2014, the introduction of a supplemental dose of the injectable inactivated polio vaccine (IPV) into its routine immunization programme. The launch for the National Capital Region (NCR) took place on 6 October 2014 in the city of Paranaque, part of Manila's metropolitan area and will gradually expand nationwide.

This major step, which is part of a worldwide rollout of the vaccine across 126 countries by the end of 2015, puts the Philippines at the forefront of the fight against Polio by becoming the first non-GAVI country in Asia using a schedule with only oral polio vaccine (OPV) to add IPV to its routine immunization programme.

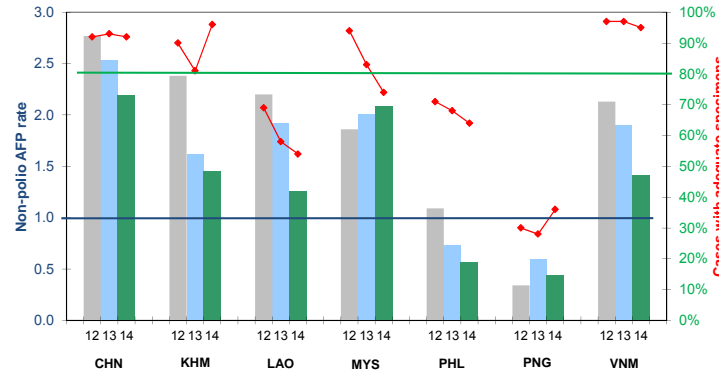
This national launch was followed by a regional event on 24 October, during World Polio Day, in the city of Iloilo for Region 6 situated in the Visayas.

The universal introduction of IPV is part of a global plan to eradicate polio and secure the gains made against the disease through stronger immunization systems, so that all children in all countries have access to vaccines. The plan also calls for the eventual removal of OPV following the eradication of the remaining strains of poliovirus transmission, due to the very low risk of potential vaccine-associated cases.

CONTACT US

Expanded Programme on Immunization
Regional Office for the Western Pacific
World Health Organization
P.O. Box 2932, 1000 Manila, Philippines
Phone: +63 2 5288001
Fax: +63 2 5211036, 5260279
Email: WPR_EPIdata@wpro.who.int
Web: www.wpro.who.int/immunization

Chart 1. Non-polio AFP rate (per 100 000 persons < 15 years of age) and adequate specimen collection rate, 2012–2014*



* AFP rate annualized as of week 43

Chart 2. Percentage of cases with pending classification > 90 days after onset, 2014

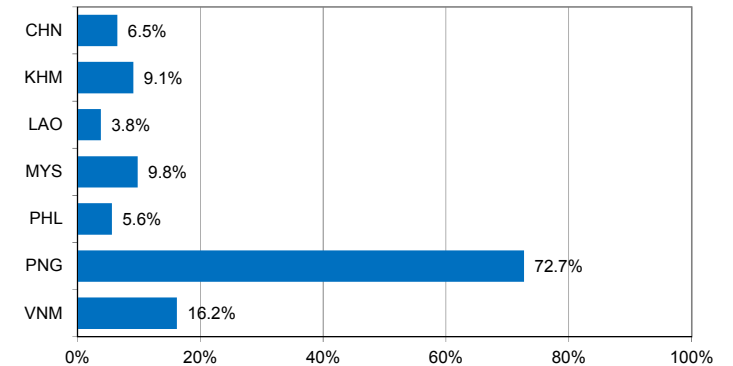


Chart 3. Polio immunization status of reported AFP cases, 2014

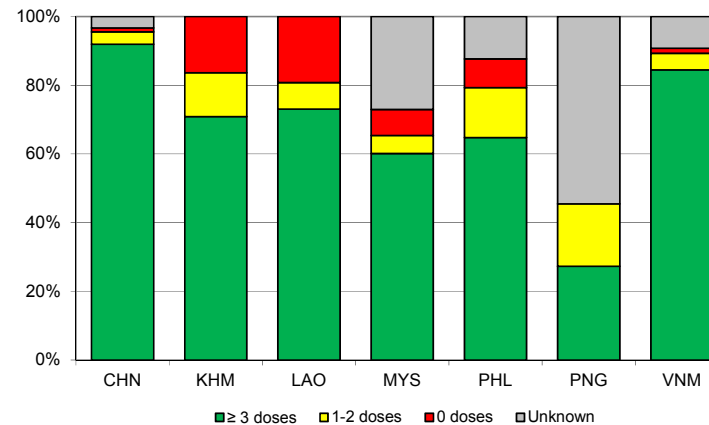
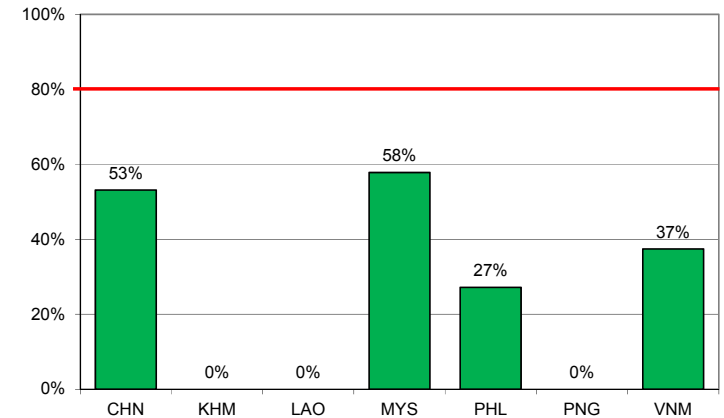


Chart 4. Percentage of samples received at the lab ≤ 3 days of collection, 2014



Note: Priority countries were selected for the charts. Official WHO acronyms have been used for abbreviation: CHN (China), KHM (Cambodia), LAO (Lao People's Democratic Republic), MYS (Malaysia), PHL (Philippines), PNG (Papua New Guinea), and VNM (Viet Nam).

Table 1. Classification of AFP cases with onset in 2014 and key surveillance indicators

	2013		2014													
	Total reported cases	Annual expected cases <15 years of age	Total reported cases	Classification						Indicators					Latest report date	Days since last report ⁷
				Confirmed wild poliovirus	Vaccine-derived poliovirus (VDPV)	Polio-compatible	Discarded (Non-polio)	Pending		Non-polio AFP rate ²	% with adequate specimens ³	% with any specimen ⁴	% investigated ≤ 2 days of notification ⁵	% with 60-day follow-up ⁶		
								Total	> 90 days ¹ # (%)							
≥ 1	≥ 80%		≥ 80%	≥ 80%												
Australia	62	44	45	0	0	0	38	7	1 (2.2%)	1.24	47%	76%	84%	0%	20-Oct-14	8
Brunei Darussalam	1	1	2	0	0	0	2	0	0 (0.0%)	2.42	50%	50%	100%	100%	30-Sep-14	28
Cambodia	73	46	55	0	0	0	17	38	5 (9.1%)	1.45	96%	100%	91%	100%	05-Oct-14	23
China	5623	2225	4038	0	0	0	3013	1025	263 (6.5%)	2.19	92%	99%	100%	83%	22-Oct-14	6
Hong Kong (China)	12	8	15	0	0	0	15	0	0 (0.0%)	2.27	93%	100%	100%	100%	07-Oct-14	21
Japan	0	167	0	-	-	-	-	-	-	-	-	-	-	-	-	-
Lao People's Democratic Republic	48	25	26	0	0	0	22	4	1 (3.8%)	1.26	54%	85%	92%	100%	02-Oct-14	26
Macao (China)	1	1	1	0	0	0	1	0	0 (0.0%)	1.21	0%	100%	100%	100%	14-Oct-14	14
Malaysia	155	77	133	0	0	0	105	28	13 (9.8%)	2.09	74%	98%	64%	56%	27-Oct-14	1
Mongolia	7	8	4	0	0	0	3	1	0 (0.0%)	0.60	75%	100%	100%	0%	09-Oct-14	19
New Zealand	12	9	5	0	0	0	4	1	1 (20.0%)	0.67	40%	80%	100%	33%	28-Oct-14	0
Papua New Guinea	18	30	11	0	0	0	0	11	8 (72.7%)	0.44	36%	91%	73%	0%	22-Oct-14	6
Philippines	277	378	179	0	0	0	142	37	10 (5.6%)	0.57	64%	91%	97%	8%	12-Sep-14	46
Republic of Korea	84	72	73	0	0	0	69	4	0 (0.0%)	1.23	82%	100%	97%	100%	16-Oct-14	12
Singapore	7	6	7	0	0	0	7	0	0 (0.0%)	1.41	71%	100%	100%	100%	08-Oct-14	20
Viet Nam	459	231	271	0	0	0	165	106	44 (16.2%)	1.42	95%	98%	92%	50%	27-Oct-14	1
Pacific island countries	8	10	10	0	0	0	6	4	4 (40.0%)	1.21	60%	80%	90%	25%	28-Oct-14	0
Total	6847	3338	4875	0	0	0	3609	1266	350 (7.2%)	1.77	90%	98%	98%	66%		

1. Number (%) of reported cases pending classification more than 90 days from date of onset of paralysis to date of last report
2. Annualized non-polio AFP rate per 100 000 population under 15 years of age
3. Percentage of reported cases with two stool specimens collected 24 hours apart and within 14 days of onset of paralysis
4. Percentage of reported cases with at least one specimen
5. Percentage of reported cases investigated within two days of notification
6. Percentage of reported cases with inadequate specimens for which the 60-day follow-up evaluation has been completed
7. Countries are expected to submit data at least once per month to WPRO

Green	Reached or surpassed target
Yellow	Nearly reached target: 0.5–0.99 for non-polio AFP rate; 60–79% for other indicators
Red	Substantially below target

Table 2. Laboratory investigation of AFP cases with onset in 2014 and key laboratory indicators

Country	National polio laboratory	Total no. of AFP cases with specimens	Virus isolation results							% specimens positive for NPEV	Latest report date	Intratyptic differentiation / Sequencing lab ¹	No. of isolates referred	Intratyptic differentiation (ITD) results									NPEV ³	Pending ITD	Discordant pending sequencing	% ITD results reported ≤ 7 days of receipt ≥ 80%			
			L20B positive		NPEV only	Negative	Pending ≤ 14 days	Pending > 14 days	% results reported ≤ 14 days ²					Type 1			Type 2			Type 3									
			L20B positive	+ NPEV										Wild	Sabin	VDPV	Wild	Sabin	VDPV	Wild	Sabin	VDPV							
Australia	VIDRL	33	0	0	2	26	5	0	94%	4%	25-Sep-14	VIDRL	0	-	-	-	-	-	-	-	-	-	-	-	-	-	-		
Brunei Darussalam	VIDRL	1	0	0	0	1	0	0	0%	0%	25-Sep-14	VIDRL	0	-	-	-	-	-	-	-	-	-	-	-	-	-	-	-	
Papua New Guinea	VIDRL	10	0	1	4	5	0	0	100%	50%	25-Sep-14	VIDRL	4	0	0	0	0	0	0	2	0	0	2	0	0	100%	-	-	
Pacific island countries	VIDRL	8	0	0	0	7	0	1	100%	0%	25-Sep-14	VIDRL	0	-	-	-	-	-	-	-	-	-	-	-	-	-	-	-	
Japan	NIID	0	-	-	-	-	-	-	-	-	-	NIID	0	-	-	-	-	-	-	-	-	-	-	-	-	-	-	-	
Cambodia	NIID	58	4	0	10	44	0	0	95%	15%	27-Oct-14	NIID	8	0	0	0	0	8	0	0	0	0	0	0	0	0	100%	-	
Lao People's Democratic Republic	NIID	23	0	0	5	18	0	0	100%	20%	20-Oct-14	NIID	0	-	-	-	-	-	-	-	-	-	-	-	-	-	-	-	
Malaysia	IMR	137	0	0	3	134	0	0	100%	2%	14-Oct-14	IMR	0	-	-	-	-	-	-	-	-	-	-	-	-	-	-	-	
Mongolia	PHI	4	0	0	1	3	0	0	100%	25%	09-Oct-14	NIID	0	-	-	-	-	-	-	-	-	-	-	-	-	-	-	-	
New Zealand	IESR	5	0	0	1	4	0	0	91%	18%	07-Oct-14	IESR	0	-	-	-	-	-	-	-	-	-	-	-	-	-	-	-	
Philippines	RITM	268	3	0	9	241	15	0	89%	3%	27-Oct-14	RITM	9	0	2	0	0	6	0	0	0	0	0	1	0	100%	-	-	
Republic of Korea	NIH	73	0	1	7	64	1	0	96%	10%	16-Oct-14	NIH	2	0	0	0	0	0	0	0	0	0	2	0	0	100%	-	-	
Singapore	SGH	8	0	0	0	8	0	0	100%	0%	27-Oct-14	SGH	0	-	-	-	-	-	-	-	-	-	-	-	-	-	-	-	
Viet Nam, North	NIHE	160	0	0	20	136	4	0	100%	11%	15-Oct-14	NIHE	0	-	-	-	-	-	-	-	-	-	-	-	-	-	-	-	
Viet Nam, South	PI	103	0	0	11	92	0	0	92%	10%	22-Oct-14	PI	0	-	-	-	-	-	-	-	-	-	-	-	-	-	-	-	
China	CCDC	3989	68	1	436	3425	1	58	69%	9%	22-Oct-14		176	0	40	0	0	64	4	0	65	0	3	0	0	0	96%	-	
China, Anhui	Prov. Lab	212	5	0	20	187	0	0	76%	9%		Prov. Lab	12	0	2	0	0	5	0	0	5	0	0	0	0	0	100%	-	
China, Beijing	Prov. Lab	29	1	0	0	27	0	1	79%	0%		Prov. Lab	6	0	2	0	0	0	0	0	4	0	0	0	0	0	100%	-	
China, Fujian	Prov. Lab	159	1	0	22	135	0	1	91%	9%		Prov. Lab	3	0	0	0	0	0	0	0	3	0	0	0	0	0	100%	-	
China, Gansu	Prov. Lab	79	0	0	8	71	0	0	66%	8%		Prov. Lab	6	0	2	0	0	2	0	0	2	0	0	0	0	0	100%	-	
China, Guangdong	Prov. Lab	270	3	0	39	228	0	0	79%	12%		Prov. Lab	7	0	2	0	0	3	0	0	2	0	0	0	0	0	71%	-	
China, Guangxi	Prov. Lab	192	5	0	36	149	0	2	50%	16%		Prov. Lab	11	0	0	0	0	6	0	0	5	0	0	0	0	0	100%	-	
China, Hebei	Prov. Lab	207	7	1	22	176	0	1	57%	8%		Prov. Lab	9	0	2	0	0	4	2	0	1	0	0	0	0	0	100%	-	
China, Heilongjiang	Prov. Lab	112	0	0	6	104	0	2	87%	5%		Prov. Lab	1	0	0	0	0	0	0	0	0	0	1	0	0	0	100%	-	
China, Henan	Prov. Lab	353	3	0	38	308	0	4	78%	9%		Prov. Lab	5	0	1	0	0	1	0	0	3	0	0	0	0	0	100%	-	
China, Hunan	Prov. Lab	166	2	0	24	133	0	7	83%	14%		Prov. Lab	2	0	2	0	0	0	0	0	0	0	0	0	0	0	100%	-	
China, Jiangsu	Prov. Lab	225	11	0	2	210	0	2	71%	1%		Prov. Lab	29	0	7	0	0	15	0	0	7	0	0	0	0	0	95%	-	
China, Jiangxi	Prov. Lab	133	2	0	21	109	0	1	91%	14%		Prov. Lab	2	0	1	0	0	0	0	0	1	0	0	0	0	0	100%	-	
China, Jilin	Prov. Lab	45	0	0	6	39	0	0	59%	11%		Prov. Lab	0	-	-	-	-	-	-	-	-	-	-	-	-	-	-	-	
China, Shaanxi	Prov. Lab	75	1	0	4	59	0	11	82%	6%		Prov. Lab	2	0	0	0	0	2	0	0	0	0	0	0	0	0	100%	-	
China, Shandong	Prov. Lab	273	2	0	27	241	0	3	77%	7%		Prov. Lab	4	0	2	0	0	0	0	0	2	0	0	0	0	0	100%	-	
China, Shanghai	Prov. Lab	20	2	0	0	17	0	1	97%	0%		Prov. Lab	6	0	0	0	0	2	0	0	4	0	0	0	0	0	100%	-	
China, Shanxi	Prov. Lab	184	3	0	2	176	0	3	42%	1%		Prov. Lab	10	0	2	0	0	4	2	0	2	0	0	0	0	0	88%	-	
China, Sichuan	Prov. Lab	263	4	0	25	233	0	1	33%	8%		Prov. Lab	10	0	4	0	0	4	0	0	2	0	0	0	0	0	100%	-	
China, Tianjin	Prov. Lab	19	0	0	3	15	0	1	89%	14%		Prov. Lab	2	0	0	0	0	0	0	0	2	0	0	0	0	0	100%	-	
China, Xinjiang	Prov. Lab	69	1	0	4	62	0	2	94%	4%		Prov. Lab	4	0	2	0	0	2	0	0	0	0	0	0	0	0	100%	-	
China, Yunnan	Prov. Lab	199	11	0	34	152	0	2	49%	14%		Prov. Lab	24	0	7	0	0	7	0	0	10	0	0	0	0	0	93%	-	
China, Zhejiang	Prov. Lab	124	2	0	19	103	0	0	60%	12%		Prov. Lab	8	0	0	0	0	2	0	0	4	0	2	0	0	0	100%	-	
China, Chongqing	Prov. Lab	55	0	0	10	40	0	5	68%	15%		CCDC	4	0	0	0	0	2	0	0	2	0	0	0	0	0	100%	-	
China, Guizhou	Prov. Lab	157	1	0	23	127	1	5	90%	14%		CCDC	5	0	0	0	0	3	0	0	2	0	0	0	0	0	80%	-	
China, Hainan	Prov. Lab	22	0	0	5	17	0	0	59%	18%		CCDC	0	-	-	-	-	-	-	-	-	-	-	-	-	-	-	-	
China, Hubei	Prov. Lab	130	0	0	16	114	0	0	56%	12%		CCDC	2	0	2	0	0	0	0	0	0	0	0	0	0	0	100%	-	
China, Liaoning	Prov. Lab	101	0	0	12	87	0	2	82%	10%		CCDC	2	0	0	0	0	0	0	0	2	0	0	0	0	0	100%	-	
China, Neimongol	Prov. Lab	71	0	0	3	68	0	0	65%	3%		CCDC	0	-	-	-	-	-	-	-	-	-	-	-	-	-	-	-	
China, Ningxia	Prov. Lab	27	1	0	2	23	0	1	60%	6%		CCDC	0	-	-	-	-	-	-	-	-	-	-	-	-	-	-	-	
China, Qinghai	Prov. Lab	17	0	0	3	14	0	0	91%	18%		CCDC	0	-	-	-	-	-	-	-	-	-	-	-	-	-	-	-	
China, Tibet	Prov. Lab	1	0	0	0	1	0	0	0%	0%		CCDC	0	-	-	-	-	-	-	-	-	-	-	-	-	-	-	-	
Hong Kong (China)	PHLC	15	0	0	4	11	0	0	91%	13%	20-Oct-14	PHLC	0	-	-	-	-	-	-	-	-	-	-	-	-	-	-	-	
Macao (China)	PHLC	0	-	-	-	-	-	-	-	-	20-Oct-14	PHLC	0	-	-	-	-	-	-	-	-	-	-	-	-	-	-	-	-
Total		4895	75	3	513	4219	26	59	71%	9%			199	0	42	0	0	78	4	0	67	0	7	1	0	96%			

1. IESR (Institute of Environmental Science and Research, New Zealand); IMR (Institute of Medical Research, Malaysia); NIH (National Institute of Health, Republic of Korea); NIHE (National Institute of Hygiene and Epidemiology, Ha Noi, Viet Nam); NIID (National Institute of Infectious Diseases, Japan); PHI (Public Health Institute, Mongolia); PHLC (Public Health Laboratory Center, Hong Kong); PI (Pasteur Institute, Ho Chi Minh, Viet Nam); RITM (Research Institute for Tropical Medicine, Philippines); SGH (Singapore General Hospital); VIDRL (Victorian Infectious Diseases Reference Laboratory, Australia)

2. The target of 14 days for the timeliness of virus isolation will be used for all polio laboratories

3. NPEV growing in L20B cells

4. Twenty-two provincial laboratories in China perform ITD from 2013

Table 3. Laboratory confirmation of polio isolates from other sources in 2014 ¹

Country	Intratyptic differentiation lab. ²	Non-AFP cases													Environmental samples																				
		Total number of non-AFP cases tested for polio	Total number of non-AFP cases with polio isolates	Type 1			Type 2			Type 3			NPEV grown in L20B	Pending ITD	Discordant pending sequencing	Total number of samples processed	Total number of samples with polio isolates	Type 1			Type 2			Type 3			NPEV grown in L20B	Pending ITD	Discordant pending sequencing						
				Wild	Sabin	VDPV	Wild	Sabin	VDPV	Wild	Sabin	VDPV						Wild	Sabin	VDPV	Wild	Sabin	VDPV	Wild	Sabin	VDPV									
Australia	VIDRL	43	0	0	0	0	0	0	0	0	0	0	0	0	0	0	-	-	-	-	-	-	-	-	-	-	-	-	-	-	-	-	-	-	
Japan	NIID	0	-	-	-	-	-	-	-	-	-	-	-	-	-	0	-	-	-	-	-	-	-	-	-	-	-	-	-	-	-	-	-	-	
Malaysia	IMR	0	-	-	-	-	-	-	-	-	-	-	-	-	9	6	0	1	0	0	1	0	0	4	0	6	0	0	0	0	0	0	0		
Mongolia	PHI	140	0	0	0	0	0	0	0	0	0	17	0	0	0	-	-	-	-	-	-	-	-	-	-	-	-	-	-	-	-	-	-		
New Zealand	IESR	0	-	-	-	-	-	-	-	-	-	-	-	-	0	-	-	-	-	-	-	-	-	-	-	-	-	-	-	-	-	-	-	-	
Philippines	VIDRL	0	-	-	-	-	-	-	-	-	-	-	-	-	0	-	-	-	-	-	-	-	-	-	-	-	-	-	-	-	-	-	-	-	
Republic of Korea	NIID	0	-	-	-	-	-	-	-	-	-	-	-	-	0	-	-	-	-	-	-	-	-	-	-	-	-	-	-	-	-	-	-	-	
Singapore	SGH	0	-	-	-	-	-	-	-	-	-	-	-	-	0	-	-	-	-	-	-	-	-	-	-	-	-	-	-	-	-	-	-	-	
Viet Nam, North	NIID	0	-	-	-	-	-	-	-	-	-	-	-	-	0	-	-	-	-	-	-	-	-	-	-	-	-	-	-	-	-	-	-	-	
Viet Nam, South	NIID	1	0	0	0	0	0	0	0	0	0	0	0	0	0	-	-	-	-	-	-	-	-	-	-	-	-	-	-	-	-	-	-	-	
China (total)		1	1	0	1	0	0	0	0	0	0	0	0	0	78	78	0	43	0	0	69	2	0	50	0	0	0	0	0	0	0	0	0		
China, Anhui	Prov. Lab	0	-	-	-	-	-	-	-	-	-	-	-	-	0	-	-	-	-	-	-	-	-	-	-	-	-	-	-	-	-	-	-	-	
China, Beijing	Prov. Lab	0	-	-	-	-	-	-	-	-	-	-	-	-	0	-	-	-	-	-	-	-	-	-	-	-	-	-	-	-	-	-	-	-	
China, Fujian	Prov. Lab	0	-	-	-	-	-	-	-	-	-	-	-	-	0	-	-	-	-	-	-	-	-	-	-	-	-	-	-	-	-	-	-	-	
China, Gansu	Prov. Lab	0	-	-	-	-	-	-	-	-	-	-	-	-	0	-	-	-	-	-	-	-	-	-	-	-	-	-	-	-	-	-	-	-	
China, Guangdong	Prov. Lab	0	-	-	-	-	-	-	-	-	-	-	-	-	24	24	0	12	0	0	15	0	0	6	0	0	0	0	0	0	0	0	0	0	
China, Guangxi	Prov. Lab	0	-	-	-	-	-	-	-	-	-	-	-	-	0	-	-	-	-	-	-	-	-	-	-	-	-	-	-	-	-	-	-	-	
China, Hebei	Prov. Lab	0	-	-	-	-	-	-	-	-	-	-	-	-	0	-	-	-	-	-	-	-	-	-	-	-	-	-	-	-	-	-	-	-	
China, Heilongjiang	Prov. Lab	0	-	-	-	-	-	-	-	-	-	-	-	-	10	10	0	7	0	0	19	1	0	13	0	0	0	0	0	0	0	0	0	0	
China, Henan	Prov. Lab	0	-	-	-	-	-	-	-	-	-	-	-	-	0	-	-	-	-	-	-	-	-	-	-	-	-	-	-	-	-	-	-	-	
China, Hunan	Prov. Lab	0	-	-	-	-	-	-	-	-	-	-	-	-	0	-	-	-	-	-	-	-	-	-	-	-	-	-	-	-	-	-	-	-	
China, Jiangsu	Prov. Lab	0	-	-	-	-	-	-	-	-	-	-	-	-	0	-	-	-	-	-	-	-	-	-	-	-	-	-	-	-	-	-	-	-	
China, Jiangxi	Prov. Lab	0	-	-	-	-	-	-	-	-	-	-	-	-	0	-	-	-	-	-	-	-	-	-	-	-	-	-	-	-	-	-	-	-	
China, Jilin	Prov. Lab	0	-	-	-	-	-	-	-	-	-	-	-	-	0	-	-	-	-	-	-	-	-	-	-	-	-	-	-	-	-	-	-	-	
China, Shaanxi	Prov. Lab	0	-	-	-	-	-	-	-	-	-	-	-	-	0	-	-	-	-	-	-	-	-	-	-	-	-	-	-	-	-	-	-	-	
China, Shandong	Prov. Lab	0	-	-	-	-	-	-	-	-	-	-	-	-	24	24	0	5	0	0	6	0	0	15	0	0	0	0	0	0	0	0	0	0	
China, Shanghai	Prov. Lab	0	-	-	-	-	-	-	-	-	-	-	-	-	8	8	0	5	0	0	8	0	0	2	0	0	0	0	0	0	0	0	0	0	
China, Shanxi	Prov. Lab	0	-	-	-	-	-	-	-	-	-	-	-	-	0	-	-	-	-	-	-	-	-	-	-	-	-	-	-	-	-	-	-	-	
China, Sichuan	Prov. Lab	0	-	-	-	-	-	-	-	-	-	-	-	-	0	-	-	-	-	-	-	-	-	-	-	-	-	-	-	-	-	-	-	-	
China, Tianjin	Prov. Lab	0	-	-	-	-	-	-	-	-	-	-	-	-	0	-	-	-	-	-	-	-	-	-	-	-	-	-	-	-	-	-	-	-	
China, Xinjiang	Prov. Lab	0	-	-	-	-	-	-	-	-	-	-	-	-	12	12	0	14	0	0	21	1	0	14	0	0	0	0	0	0	0	0	0	0	
China, Yunnan	Prov. Lab	1	1	0	1	0	0	0	0	0	0	0	0	0	0	-	-	-	-	-	-	-	-	-	-	-	-	-	-	-	-	-	-	-	
China, Zhejiang	Prov. Lab	0	-	-	-	-	-	-	-	-	-	-	-	-	0	-	-	-	-	-	-	-	-	-	-	-	-	-	-	-	-	-	-	-	-
China, Chongqing	CCDC	0	-	-	-	-	-	-	-	-	-	-	-	-	0	-	-	-	-	-	-	-	-	-	-	-	-	-	-	-	-	-	-	-	-
China, Guizhou	CCDC	0	-	-	-	-	-	-	-	-	-	-	-	-	0	-	-	-	-	-	-	-	-	-	-	-	-	-	-	-	-	-	-	-	-
China, Hainan	CCDC	0	-	-	-	-	-	-	-	-	-	-	-	-	0	-	-	-	-	-	-	-	-	-	-	-	-	-	-	-	-	-	-	-	-
China, Hubei	CCDC	0	-	-	-	-	-	-	-	-	-	-	-	-	0	-	-	-	-	-	-	-	-	-	-	-	-	-	-	-	-	-	-	-	-
China, Liaoning	CCDC	0	-	-	-	-	-	-	-	-	-	-	-	-	0	-	-	-	-	-	-	-	-	-	-	-	-	-	-	-	-	-	-	-	-
China, Neimongol	CCDC	0	-	-	-	-	-	-	-	-	-	-	-	-	0	-	-	-	-	-	-	-	-	-	-	-	-	-	-	-	-	-	-	-	-
China, Ningxia	CCDC	0	-	-	-	-	-	-	-	-	-	-	-	-	0	-	-	-	-	-	-	-	-	-	-	-	-	-	-	-	-	-	-	-	-
China, Qinghai	CCDC	0	-	-	-	-	-	-	-	-	-	-	-	-	0	-	-	-	-	-	-	-	-	-	-	-	-	-	-	-	-	-	-	-	-
China, Tibet	CCDC	0	-	-	-	-	-	-	-	-	-	-	-	-	0	-	-	-	-	-	-	-	-	-	-	-	-	-	-	-	-	-	-	-	-
Hong Kong (China)	PHLC	0	-	-	-	-	-	-	-	-	-	-	-	-	0	-	-	-	-	-	-	-	-	-	-	-	-	-	-	-	-	-	-	-	-
Total		185	1	0	1	0	0	0	0	0	0	17	0	0	87	84	0	44	0	0	70	2	0	54	0	6	0	0	0	0	0	0	0		

1. Based on year of collection of sample, if available. Otherwise, based on year of receipt at reference laboratory.

2. CCDC (Chinese Center for Disease Control and Prevention, China); IESR (Institute of Environmental Science and Research, New Zealand); IMR (Institute of Medical Research, Malaysia); NIID (National Institute of Infectious Diseases, Japan); PHI (Public Health Institute, Mongolia); PHLC (Public Health Laboratory Center, Hong Kong); SGH (Singapore General Hospital); VIDRL (Victorian Infectious Diseases Reference Laboratory, Australia)

Table 4. Vaccine-derived poliovirus, 2000–2014

Country	2000	2001	2002	2003	2004	2005	2006	2007	2008	2009	2010	2011	2012	2013	2014
Cambodia						cVDPV3 (1 case)	cVDPV3 (1 case)								
China	aVDPV1 (1 case)	IVDPV1 (1 case) aVDPV3 (1 case)	aVDPV1 (1 case) aVDPV3 (1 case)		cVDPV1 (2 cases) ?VDPV1 (4 cases) ?VDPV2 (1 case)	IVDPV2 (1 case)	aVDPV1 (1 case) ?VDPV1 (7 cases) VDPV3 (1 case)	aVDPV1 (3 cases) ?VDPV1 (1 case)		aVDPV2 (1 case)	aVDPV2 (5 cases) aVDPV3 (2 cases)	aVDPV1 (1 case) aVDPV2 (3 cases) cVDPV2 (2 cases) IVDPV2 (2 cases) IVDPV3 (1 case)	aVDPV1 (1 case) aVDPV2 (2 cases) cVDPV2 (3 cases) IVDPV2 + IVDPV3 (1 case)	aVDPV2 (1 case) IVDPV2 + IVDPV3 (1 case)	aVDPV2 (1 case)
Hong Kong (China)						?VDPV? (3 cases)									
Japan					?VDPV? (1 case)	?VDPV3 (1 case)									
Lao People's Democratic Republic					aVDPV2 (1 case) ?VDPV? (2 cases)										
Mongolia				?VDPV? (1 case)											
Philippines		cVDPV1 (3 cases)													
Viet Nam													aVDPV2 (2 cases)		