



World Health Organization
Organisation mondiale de la Santé

50ª ASAMBLEA MUNDIAL DE LA SALUD

Punto 22.2 del orden del día provisional

A50/9

1 de mayo de 1997

Estado de la recaudación de las contribuciones señaladas

Informe del Director General

Este informe tiene por objeto actualizar el informe del Director General sobre el mismo tema a la 99ª reunión del Consejo Ejecutivo, celebrada en enero de 1997 (documento EB97/7), y tiene por objeto ayudar a la Asamblea de la Salud a examinar la situación financiera de la Organización.

1. En los cuadros anexos¹ puede verse el estado de la recaudación de las contribuciones señaladas al 30 de abril de 1997. De acuerdo con lo previsto en la resolución WHA16.20, el Director General presenta un informe separado sobre los Miembros a los que se aplican las disposiciones del párrafo 2 de la resolución WHA8.13, relativo a la posible suspensión del derecho de voto de esos Miembros.

RECAUDACIÓN DE CONTRIBUCIONES. CUADROS CORRESPONDIENTES A 1997 (parte 2, páginas 2 y 3 de los cuadros incluidos en anexo)

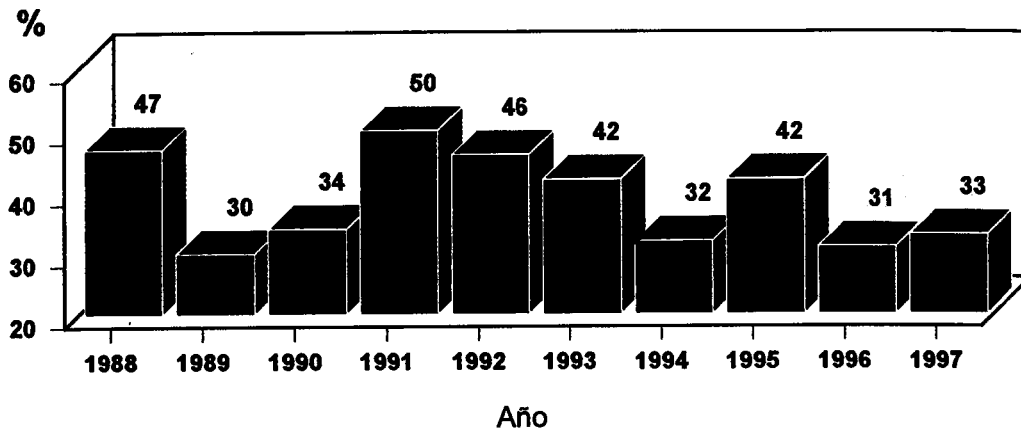
2. Las sumas recaudadas por concepto de contribuciones al presupuesto efectivo pagaderas en 1997 ascienden a US\$139 826 596, es decir, al 33,4% de las contribuciones señaladas a los Miembros, frente al 31,1% y al 41,7% en las mismas fechas de 1996 y 1995, respectivamente.

¹ Disponibles en francés y en inglés solamente.

FIGURA 1

Porcentaje de las contribuciones recaudado hasta el 30 de abril

1988 a 1997



ATRASOS EN EL PAGO DE LAS CONTRIBUCIONES

Atrasos totales

3. El 1 de enero de 1997, el total de los atrasos en el pago de las contribuciones correspondientes a años anteriores a 1997 debidas por Miembros ascendía a US\$ 174 084 587. Los pagos recibidos desde esa fecha representan US\$ 9 730 389, lo cual redujo esos atrasos a US\$ 164 354 198 al 30 de abril de 1997. La cifra correspondiente al 30 de abril de 1996 fue de US\$ 197 451 870 (comprende atrasos respecto de los cuales la Asamblea de la Salud ha autorizado arreglos especiales y la contribución de un Miembro no registrada en el presupuesto).

Contribuciones respecto de las cuales la Asamblea de la Salud autorizó arreglos especiales (parte 3, página 4)

3.1 En esta parte de los cuadros figura el estado de las anualidades debidas por determinados Miembros con arreglo a lo dispuesto en las resoluciones WHA33.7, WHA37.6, WHA39.16 y WHA45.23, por un total de US\$ 4 736 469.

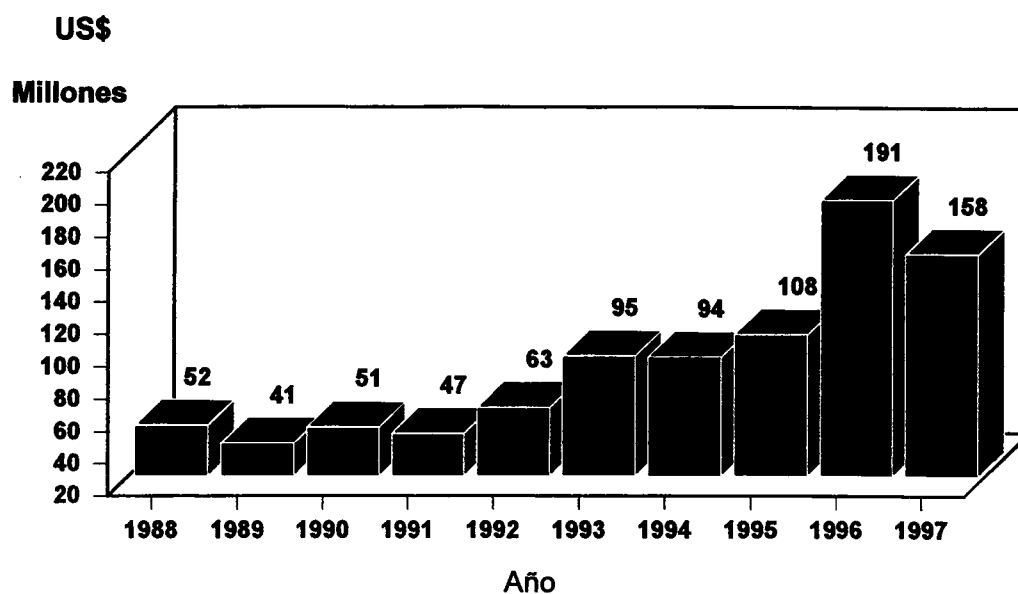
Contribuciones al presupuesto efectivo debidas por otros Miembros y contribuciones no registradas en el presupuesto (parte 4, páginas 5 y 6)

3.2 En esta parte de los cuadros figuran otros atrasos en el pago de las contribuciones correspondientes a años anteriores a 1997 debidas por los Miembros, por un total de US\$ 158 098 914 y la contribución, por valor de US\$ 1 519 535, de un Miembro no registrada en el presupuesto. La figura 2 muestra que la tendencia a la disminución de los atrasos, registrada en el cuatrienio que terminó en 1991, se invirtió a partir de 1992 y en 1996 llegó a una suma sin precedentes, de US\$ 191 millones (sin contar los atrasos respecto de los cuales la Asamblea de la Salud ha autorizado arreglos especiales ni la contribución de un Miembro no registrada en el presupuesto). Sin embargo, la situación ha mejorado en 1997, ya que los atrasos correspondientes a años anteriores ascendían a US\$ 158 millones, de los cuales US\$ 97 millones son adeudos de tres Miembros.

FIGURA 2

**Contribuciones al presupuesto ordinario de años anteriores
pendientes al 30 de abril**

1988 a 1997



Contribuciones correspondientes a 1998 recibidas por adelantado (parte 5, página 7)

3.3 En la parte 5 del informe pueden verse las contribuciones recibidas por adelantado.

ASUNTOS QUE REQUIEREN ESPECIAL ATENCIÓN DE LA ASAMBLEA DE LA SALUD

4. La Asamblea de la Salud tal vez estime oportuno examinar, para su posible adopción, el texto de la resolución recomendada por el Consejo Ejecutivo en su resolución EB99.R3.¹

¹ Documento EB99/1997/REC/1, pp. 2 y 3.



STATEMENT SHOWING THE STATUS OF COLLECTION OF ANNUAL
REGULAR BUDGET CONTRIBUTIONS AS AT 30 APRIL 1997

(Expressed in US dollars)

TABLEAUX INDIQUANT L'ETAT DU RECOUVREMENT DES CONTRIBUTIONS
ANNUELLES AU BUDGET REGULIER A LA DATE DU 30 AVRIL 1997

(En dollars des Etats-Unis)

1. SUMMARY

As of 30 April 1997, the rate of collection of annual contributions in respect of the regular budget is higher than in 1996. Out of a total amount of \$ 419 276 000, \$ 139 826 596 or 33.35% has been collected, as compared to 31.06% in 1996. Whereas 65 Members had paid their contributions in full and 19 Members in part, 108 Members had not yet paid any part of their assessment. Advance payments in respect of 1998 contributions are listed on page 7 of this statement.

1. RESUME

Au 30 avril 1997, le taux de recouvrement des contributions annuelles au budget régulier est plus élevé qu'en 1996. Pour un total de \$ 419 276 000 mis en recouvrement les encaissements atteignent \$ 139 826 596 soit 33.35% contre 31.06% en 1996. Alors que 65 Membres ont versé leur contribution en totalité et 19 en partie, 108 Membres n'ont encore fait aucun versement. Les paiements en avance des contributions pour 1998 figurent en page 7 de ce rapport.

Payments may be made as follows:

Les sommes en cause peuvent être payées:

(1) in US dollars to:

en dollars des Etats-Unis à:

or

ou

(2) in Swiss francs to:

en francs suisses à:

World Health Organization
Account No.1 ABA No.021080083
The Federal Reserve Bank of New York
33 Liberty Street
New York, N.Y. 10045
United States Of America

Organisation mondiale de la Santé
Compte No.44032-8-32
Banque Nationale Suisse
8022 Zurich
Suisse

or (3) partly in US dollars as in (1) above, and partly in Swiss francs
as in (2) above.

ou *en partie en dollars des Etats-Unis comme en (1) ci-dessus, et
en partie en francs suisses comme en (2) ci-dessus.*

**2. STATUS OF COLLECTION OF CONTRIBUTIONS IN RESPECT
OF THE 1997 ASSESSMENTS**

2. ETAT DU RECOUVREMENT DES CONTRIBUTIONS FIXEES POUR 1997

Members and Associate Members	Assessments Sommes fixées (US\$)	Cash receipts and credits given Encaissements et crédits bonifiés (US\$)	Balances due Sommes restant à payer (US\$)	Membres et Membres associés
AFGHANISTAN	41.555	-	41.555	AFGHANISTAN
ALBANIA	41.555	-	41.555	ALBANIE
ALGERIA	654.015	-	654.015	ALGERIE
ANGOLA	41.570	41.570	-	ANGOLA
ANTIGUA AND BARBUDA	41.570	-	41.570	ANTIGUA-ET-BARBUDA
ARGENTINA	1,945.615	-	1,945.615	ARGENTINE
ARMENIA	216.390	-	216.390	ARMENIE
AUSTRALIA	5,981.020	5,981.020	-	AUSTRALIE
AUSTRIA	3,512.290	-	3,512.290	AUTRICHE
AZERBAIJAN	468.740	-	468.740	AZERBAIDJAN
BAHAMAS	82.170	82.170	-	BAHAMAS
BAHRAIN	81.440	81.440	-	BAHREIN
BANGLADESH	41.175	-	-	BANGLADESH
BARBADOS	41.240	-	41.240	BARBADE
BELARUS	1,158.595	-	1,158.595	BELARUS
BELGIUM	4,113.635	-	4,113.635	BELGIQUE
BELIZE	41.345	-	41.345	BELIZE
BENIN	41.555	510	40.845	BENIN
BHUTAN	41.185	41.185	-	BHOUTAN
BOLIVIA	41.255	-	41.255	BOLIVIE
BOSNIA AND HERZEGOVINA	46.355	-	46.355	BOSNIE-HERZEGOVINE
BOTSWANA	41.240	41.240	-	BOTSWANA
BRAZIL	6,614.980	-	6,614.980	BRESIL
BRUNEI DARUSSALAM	81.470	81.470	-	BRUNEI DARUSSALAM
BULGARIA	333.230	-	333.230	BULGARIE
BURKINA FASO	41.570	-	41.570	BURKINA FASO
BURUNDI	41.570	-	41.570	BURUNDI
CAMBODIA	41.570	-	41.570	CAMBODGE
CAMEROON	41.570	-	41.570	CAMEROUN
CANADA	12,591.740	12,591.740	-	CANADA
CAPE VERDE	41.570	-	41.570	CAP-VERT
CENTRAL AFRICAN REPUBLIC	41.570	-	41.570	REPUBLIQUE CENTRAFRICAINE
CHAD	41.570	-	41.570	TCHAD
CHILE	329.680	79.680	250.000	CHILI
CHINA	2,993.615	2,993.615	-	CHINE
COLOMBIA	407.685	407.685	-	COLOMBIE
COMOROS	41.570	-	41.570	COMORES
CONGO	216.570	-	216.570	CONGO
COOK ISLANDS	41.245	510	40.735	ILES COOK
COSTA RICA	41.570	41.570	-	COSTA RICA
COTE D'IVOIRE	41.570	-	41.570	COTE D'IVOIRE
CROATIA	371.040	3.210	367.830	CROATIE
CUBA	211.195	-	211.195	CUBA
CYPRUS	123.020	123.020	-	CHYPRE
CZECH REPUBLIC	1,016.660	1,016.660	-	REPUBLIQUE TCHEQUE
DEMOCRATIC PEOPLE'S REP. OF KOREA	204.375	204.375	-	REP. POPULAIRE DEM. DE COREE
DENMARK	2,917.685	2,917.685	-	DANEMARK
DJIBOUTI	41.570	-	41.570	DJIBOUTI
DOMINICA	41.560	-	41.560	DOMINIQUE
DOMINICAN REPUBLIC	41.570	-	41.570	REPUBLIQUE DOMINICAINE
ECUADOR	82.525	-	82.525	EQUATEUR
EGYPT	306.770	306.770	-	EGYPTE
EL SALVADOR	41.570	510	41.060	EL SALVADOR
EQUATORIAL GUINEA	41.570	-	41.570	GUINEE EQUATORIALE
ERITREA	41.570	41.570	-	ERYTHREE
ESTONIA	170.040	-	170.040	ESTONIE
ETHIOPIA	41.220	510	40.710	ETHIOPIE
FIJI	41.235	41.235	-	FIDJI
FINLAND	2,508.600	2,508.600	-	FINLANDE
FRANCE	27,516.605	27,516.605	-	FRANCE
GABON	41.570	-	41.570	GABON
GAMBIA	41.570	-	41.570	GAMBIE
GEORGIA	468.740	-	468.740	GEORGIE
GERMANY	36,733.745	18,336.873	18,396.872	ALLEMAGNE
GHANA	41.285	-	41.285	GHANA
GREECE	1,533.924	20.031	1,513.924	GRECE
GUENADA	41.570	-	41.570	GUENADA
GUATEMALA	82.525	-	82.525	GUATEMALA
GUINEA	41.570	-	41.570	GUINEE
GUINEA-BISSAU	41.570	-	41.570	GUINEE-BISSAU
GUYANA	41.385	19.789	21.596	GUYANA
HAITI	41.570	-	41.570	HAITI
HONDURAS	41.560	-	41.560	HONDURAS
HUNGARY	570.945	570.945	-	HONGRIE
ICELAND	122.595	122.595	-	ISLANDE
INDIA	1,248.975	624.488	624.487	INDE
INDONESIA	571.295	571.295	-	INDONESIE
IRAN (ISLAMIC REPUBLIC OF)	1,869.955	-	1,869.955	IRAN (REPUBLIQUE ISLAMIQUE D')
IRAQ	577.040	-	577.040	IRAQ
IRELAND	859.195	859.195	-	IRLANDE
ISRAEL	1,081.230	1,081.230	-	ISRAEL
ITALY	21,278.295	-	21,278.295	ITALIE
JAMAICA	41.435	-	41.435	JAMAIQUE
JAPAN	63,239.505	-	63,239.505	JAPON
JORDAN	41.420	-	41.420	JORDANIE
KAZAKSTAN	803.610	-	803.610	KAZAKSTAN
KENYA	41.570	-	41.570	KENYA
KIRIBATI	41.425	41.425	-	KIRIBATI
KUWAIT	775.920	775.920	-	KOWEIT
KYRGYZSTAN	128.670	-	128.670	KIRGHIZISTAN
LAO PEOPLE'S DEMOCRATIC REPUBLIC	43.235	-	43.235	REP. DEMOCRATIQUE POPULAIRE LAO
LATVIA	334.875	-	334.875	LETTONIE
LEBANON	41.370	1.210	40.160	LIBAN
LESOTHO	41.230	-	41.230	LESOTHO
LIBERIA	41.570	-	41.570	LIBERIA
LIBYAN ARAB JAMAHIRIYA	829.575	-	829.575	JAMAHIRIYA ARABE LIBYENNE
LITHUANIA	340.070	-	340.070	LITUANIE
LUXEMBOURG	286.365	286.365	-	LUXEMBOURG
MADAGASCAR	41.565	-	41.565	MADAGASCAR
MALAKI	41.520	-	41.520	MALAKI
MALAYSIA	573.055	573.055	-	MALAISIE
MALDIVES	41.235	41.235	-	MALDIVES
MALI	41.555	-	41.555	MALI
MALTA	41.205	41.205	-	MALTE
MARSHALL ISLANDS	41.550	-	41.550	ILES MARSHALL

**2. STATUS OF COLLECTION OF CONTRIBUTIONS IN RESPECT
OF THE 1997 ASSESSMENTS (Concluded)**

2. ETAT DU RECOUVREMENT DES CONTRIBUTIONS FIXEES POUR 1997 (Fin)

Members and Associate Members	Assessments Sommes fixées (US\$)	Cash receipts and credits given Encaissements et crédits bonifiés (US\$)	Balances due Sommes restant à payer (US\$)	Membres et Membres associés
MAURITANIA	41.565	-	41.565	MAURITANIE
MAURITIUS	41.185	41.185	-	MAURICE
MEXICO	3,206.160	-	3,206.160	MEXIQUE
MICRONESIA (FEDERATED STATES OF)	41.585	40.125	1.260	MICRONESIE (ETATS FEDERES DE)
MONACO	41.200	41.200	-	MONACO
MONGOLIA	41.225	-	41.225	MONGOLIE
MOROCCO	123.030	123.030	-	MAROC
MOZAMBIQUE	41.235	41.235	-	MOZAMBIQUE
MYANMAR	41.185	41.185	-	MYANMAR
NAMIBIA	41.240	41.240	-	NAMIBIE
NAURU	41.570	-	41.570	NAURU
NEPAL	41.375	510	40.865	NEPAL
NETHERLANDS	6,430.470	6,430.470	-	PAYS-BAS
NEW ZEALAND	959.485	959.485	-	NOUVELLE-ZELANDE
NICARAGUA	41.570	-	41.570	NICARAGUA
NIGER	41.570	-	41.570	NIGER
NIGERIA	463.545	-	463.545	NIGERIA
NIUE	41.565	510	41.055	NIUE
NORWAY	2,269.375	2,269.375	-	NORVEGE
OMAN	163.745	163.745	-	OMAN
PAKISTAN	247.360	-	247.360	PAKISTAN
PALAU	41.570	41.570	-	PALAU
PANAMA	41.570	-	41.570	PANAMA
PAPUA NEW GUINEA	41.570	14.823	26.747	PAPOUASIE-NOUVELLE-GUINEE
PARAGUAY	40.930	-	40.930	PARAGUAY
PERU	247.360	-	247.360	PEROU
PHILIPPINES	246.270	-	246.270	PHILIPPINES
POLAND	1,354.790	-	1,354.790	PLOGNE
PORTUGAL	1,122.225	1,122.225	-	PORTUGAL
PUERTO RICO	41.355	-	41.355	PORTO RICO
QATAR	164.680	-	164.680	QATAR
REPUBLIC OF KOREA	3,325.550	3,325.550	-	REPUBLIQUE DE COREE
REPUBLIC OF MOLDOVA	340.070	-	340.070	REPUBLIQUE DE MOLDOVA
ROMANIA	618.185	-	618.185	ROUMANIE
RUSSIAN FEDERATION	17,822.965	-	17,822.965	FEDERATION DE RUSSIE
RWANDA	41.570	-	41.570	RWANDA
SAINT KITTS AND NEVIS	41.220	41.220	-	SAINT-KITTS-ET-NEVIS
SAINT LUCIA	41.175	41.175	-	SAINTE-LUCIE
SAINT VINCENT AND THE GRENADINES	41.405	-	41.405	SAINT-VINCENT-ET-GRENADINES
SAMOA	41.205	41.205	-	SAMOA
SAN MARINO	41.220	-	41.220	SAINT-MARIN
SAO TOME AND PRINCIPE	41.235	-	41.235	SAO TOME-ET-PRINCIPE
SAUDI ARABIA	2,901.330	43.140	2,858.190	ARABIE SAOUDITE
SENEGAL	41.570	41.570	-	SENEGAL
SEYCHELLES	41.570	41.570	-	SEYCHELLES
SIERRA LEONE	41.365	-	41.365	SIERRA LEONE
SINGAPORE	573.095	-	573.095	SINGAPOUR
SLOVAKIA	329.185	329.185	-	SLOVAQUIE
SLOVENIA	285.360	-	285.360	SLOVENIE
SOLOMON ISLANDS	41.540	-	41.540	ILES SALOMON
SOMALIA	41.570	-	41.570	SOMALIE
SOUTH AFRICA	1,302.950	1,302.950	-	AFRIQUE DU SUD
SPAIN	9,643.050	9,643.050	-	ESPAGNE
SRI LANKA	41.215	41.215	-	SRI LANKA
SUDAN	41.375	-	41.375	SUDAN
SURINAME	41.570	-	41.570	SURINAME
SWAZILAND	41.305	-	41.305	SWAZILAND
SWEDEN	4,981.580	4,981.580	-	SUEDE
SWITZERLAND	4,903.335	4,903.335	-	SUISSE
SYRIAN ARAB REPUBLIC	204.845	-	204.845	REPUBLIQUE ARABE SYRIENNE
TAJIKISTAN	82.525	-	82.525	TADJIKISTAN
THAILAND	529.867	-	1.853	THAILANDE
THE FORMER YUGOSLAV REP OF MACEDONIA	41.530	41.530	-	EX-REP. YUGOSLAVE DE MACEDOINE
TOGO	41.570	-	41.570	TOGO
TOKELAU	41.530	13.500	28.030	TOKELAU
TONGA	41.185	41.185	-	TONGA
TRINIDAD AND TOBAGO	128.595	-	128.595	TRINITE-ET-TOBAGO
TUNISIA	123.155	123.155	-	TUNISIE
TURKEY	1,551.645	-	1,551.645	TURQUIE
TURKMENISTAN	128.670	-	128.670	TURKMENISTAN
TUVALU	41.445	-	41.445	TUVALU
UGANDA	41.760	7.850	33.910	UGANDA
UKRAINE	4,553.490	-	4,553.490	UKRAINE
UNITED ARAB EMIRATES	783.050	-	783.050	EMIRATS ARABES UNIS
UNITED KINGDOM	21,560.250	21,560.250	-	ROYAUME-UNI
UNITED REPUBLIC OF TANZANIA	41.790	-	41.790	REPUBLIQUE-UNIE DE TANZANIE
UNITED STATES OF AMERICA	107,389.300	-	107,389.300	ETATS-UNIS D'AMERIQUE
URUGUAY	164.845	-	164.845	URUGUAY
UZBEKISTAN	551.260	-	551.260	OUZBEKISTAN
VANUATU	41.250	-	41.250	VANUATU
VENEZUELA	1,354.635	-	1,354.635	VENEZUELA
VIET NAM	41.215	41.215	-	VIET NAM
YEMEN	51.570	-	51.570	YEMEN
YUGOSLAVIA	417.395	-	417.395	YUGOSLAVIE
ZAIRE	41.570	-	41.570	ZAIRE
ZAMBIA	41.340	-	41.340	ZAMBIE
ZIMBABWE	43.685	43.685	-	ZIMBABWE
Total	419,276,000	139,826,596 (33.35%)*	279,449,404	Total

* of contributions - the comparable percentages for 1996 and 1995 are } 31.06% & 41.68%
des contributions - les pourcentages comparables pour 1996 et 1995 sont

3. OUTSTANDING CONTRIBUTIONS RELATING TO THE REGULAR BUDGETS OF YEARS PRIOR TO 1997 FOR WHICH THE WORLD HEALTH ASSEMBLY AUTHORIZED SPECIAL ARRANGEMENTS

3. CONTRIBUTIONS DUES AU TITRE DU BUDGET REGULIER D'EXERCICES ANTERIEURS A 1997 POUR LESQUELLES L'ASSEMBLEE MONDIALE DE LA SANTE A AUTORISE DES ARRANGEMENTS SPECIAUX

Members and Associate Members	Year in which instalments are payable Année au cours de laquelle les acomptes sont dus	Outstanding instalments payable in respect of consolidated arrears of contributions as of 1.1.1997 Acomptes restant à verser au titre des contributions arriérées consolidées au 1.1.1997 (US\$)	Payments received in 1997 Versements reçus en 1997 (US\$)	Balance of instalments payable Solde des acomptes à verser (US\$)	Membres et Membres associés
BELARUS arrangements in accordance with resolution WHA45.23	1997 1998/06	90,837 817,524	- -	90,837 817,524	BELARUS arrangements conformément à la résolution WHA45.23
Total		908,361	-	908,361	Total
CHAD arrangements in accordance with resolution WHA37.6	1990 1991 1992 1993 1994	11,177 11,177 11,177 11,177 11,177	11,177 11,177 - - -	- - 11,177 11,177 11,177	TCHAD arrangements conformément à la résolution WHA37.6
Total		55,885	22,354	33,531	Total
DOMINICAN REPUBLIC arrangements in accordance with resolution WHA33.7	1986 1987 1988 1989	22,686 25,683 25,683 25,682	- - - -	22,686 25,683 25,683 25,682	REPUBLIQUE DOMINICAINE arrangements conformément à la résolution WHA33.7
Total		99,734	-	99,734	Total
ROMANIA arrangements in accordance with resolution WHA39.16	1995 1996	43,400 222,958	- -	43,400 222,958	ROUMANIE arrangements conformément à la résolution WHA39.16
Total		266,358	-	266,358	Total
UKRAINE arrangements in accordance with resolution WHA45.23	1997 1998/06	342,853 3,085,632	- -	342,853 3,085,632	UKRAINE arrangements conformément à la résolution WHA45.23
Total		3,428,485	-	3,428,485	Total
Grand total		4,758,823	22,354	4,736,469	Total général

4. OTHER OUTSTANDING CONTRIBUTIONS RELATING TO:
 A) REGULAR BUDGETS OF YEARS PRIOR TO 1997, AND
 B) UNBUDGETED ASSESSMENTS

4. AUTRES SOMMES DUES AU TITRE
 A) DES CONTRIBUTIONS AU BUDGET REGULIER D'EXERCICES ANTERIEURS A 1997, ET
 B) DES CONTRIBUTIONS NON INSCRITES AU BUDGET

Members and Associate Members	Unpaid arrears Arriérés impayés 1 Jan 1997 (US\$)	Cash receipts & credits given Recettes et crédits bonifiés (US\$)	Balances due - Sommes restant dues								Membres et Membres associés	
			1986-1990 (US\$)	1991 (US\$)	1992 (US\$)	1993 (US\$)	1994 (US\$)	1995 (US\$)	1996 (US\$)	Total (US\$)		
			AFGHANISTAN	122.575						40.255		40.765
ANTIGUA AND BARBUDA	256.724		27.974	31.055	37.290	36.695	41.070	41.070	41.570	256.724	ANTIGUA-ET-BARBUDA	
ARGENTINA	1.436.867								1.436.867	1.436.867	ARGENTINE	
ARMENIA	1.976.320				178.400	513.710	533.910	533.910	216.390	1.976.320	ARMENIE	
AUSTRIA	317.185	317.185								-	AUTRICHE	
AZERBAIJAN	3.168.270				93.940	880.650	862.470	862.470	468.740	3.168.270	AZERBAIDJAN	
BELARUS	3.068.035								1.909.440	1.508.595	3.068.035	BELARUS
BELGIUM	520.935	380.771								140.164	140.164	BELGIQUE
BOLIVIA	80.685	39.940								40.745	40.745	BOLIVIE
BOSNIA AND HERZEGOVINA	535.995				14.310	146.770	164.280	164.280	46.355	535.995	BOSNIE-HERZEGOVINE	
BRAZIL	6.614.980								6.614.980	6.614.980	BRESIL	
BULGARIA	652.335	172.650							333.230	479.685	BULGARIE	
BURKINA FASO	117.960	51.644							24.744	41.570	66.316	BURKINA FASO
BURUNDI	107.434	43.709							41.570	41.570	63.725	BURUNDI
CAMBODIA	41.060									41.060	41.060	CAMBODGE
CAMEROON	69.030	42.957								26.073	26.073	CAMEROUN
CAPE VERDE	41.060									41.060	41.060	CAP-VERT
CENTRAL AFRICAN REPUBLIC	116.006								33.366	41.070	116.006	REPUBLIQUE CENTRAFRICAINE
CHAD	233.964	65.365			8.194	36.695	41.070	41.070	41.070	168.599	TCHAD	
CHILE	300.000	300.000								-	-	CHILI
COMOROS	366.023		137.273	31.055	37.290	36.695	41.070	41.070	41.070	366.023	COMORES	
CONGO	468.670								191.070	216.570	468.670	CONGO
COTE D'IVOIRE	13.608									13.608	13.608	COTE D'IVOIRE
CROATIA	514.850	514.850								-	-	CROATIE
CUBA	1.264.468	58.887					369.630	369.630	211.195	1.205.581	1.205.581	CUBA
DJIBOUTI	92.222						9.887	40.765	41.570	92.222	92.222	DJIBOUTI
DOMINICA	56.014	42.160							13.854	13.854	13.854	DOMINIQUE
DOMINICAN REPUBLIC	824.435		340.165	93.170	111.865	73.385	82.140	82.140	41.570	824.435	824.435	REPUBLIQUE DOMINICAINE
ECUADOR	328.941						123.206	123.210	82.525	328.941	328.941	EQUATEUR
EQUATORIAL GUINEA	297.139		68.389	31.055	37.290	36.695	41.070	41.070	41.570	297.139	297.139	GUINEE EQUATORIALE
ESTONIA	368.137	210.614							157.523	157.523	157.523	ESTONIE
GABON	196.059						73.369	81.120	41.570	196.059	196.059	GABON
GAMBIA	69.095							27.525	41.570	69.095	69.095	GAMBIE
GEORGIA	3.322.740				285.110	843.950	862.470	862.470	468.740	3.322.740	3.322.740	GEORGIE
GRENADA	96.419	23.521						31.328	41.570	72.898	72.898	GRENADE
GUATEMALA	183.285						18.620	82.140	82.525	183.285	183.285	GUATEMALA
GUINEA	72.060							30.490	41.570	72.060	72.060	GUINEE
GUINEA-BISSAU	193.519				33.114	36.695	41.070	41.070	41.570	193.519	193.519	GUINEE-BISSAU
HAITI	102.665	15.015						5.010	41.070	87.650	87.650	HAITI
HONDURAS	4.479								4.479	4.479	4.479	HONDURAS
IRAN (ISLAMIC REPUBLIC OF)	3.572.261	2.452.978							1.119.283	1.119.283	1.119.283	IRAN (REPUBLIQUE ISLAMIQUE D')
IRAQ	3.824.197		882.182	372.675	447.465	477.015	533.910	533.910	577.040	3.824.197	3.824.197	IRAQ
ITALY	2.236.237								2.236.237	2.236.237	2.236.237	ITALIE
JAMAICA	10.674								10.674	10.674	10.674	JAMAIQUE
KAZAKHSTAN	4.384.932	126.708					788.572	1.396.375	803.610	4.384.932	4.384.932	KAZAKHSTAN
KYRGYZSTAN	912.810				71.140	220.160	246.420	246.420	128.670	912.810	912.810	KIRGHIZISTAN
LATVIA	1.959.155				42.750	513.710	533.910	533.910	334.875	1.959.155	1.959.155	LETTONIE
LIBERIA	314.567		85.817	31.055	37.290	36.695	41.070	41.070	41.570	314.567	314.567	LIBERIA
LIBYAN ARAB JAMAHIRIYA	1.956.801	1.013.458							113.768	829.575	943.343	JAMAHIRIYA ARABE LIBYENNE
LITHUANIA	1.222.920							266.800	616.050	340.070	1.222.920	LITUANIE
MADAGASCAR	66.650								25.085	41.565	66.650	MADAGASCAR
MALI	67.839								26.284	41.555	67.839	MALI
MARSHALL ISLANDS	41.040									41.040	41.040	ILES MARSHALL
MAURITANIA	126.150						2.445	41.070	41.070	126.150	126.150	MAURITANIE
MEXICO	1.269.603	352.585							917.018	917.018	917.018	MEXIQUE
MICRONESIA (FEDERATED STATES OF)	375	375								-	-	MICRONESIE (ETATS FEDERES DE)
NAURU	41.060								41.060	41.060	41.060	NAURU

4. OTHER OUTSTANDING CONTRIBUTIONS RELATING TO:
 A) REGULAR BUDGETS OF YEARS PRIOR TO 1997, AND
 B) UNBUDGETED ASSESSMENTS (Concluded)

4. AUTRES SOMMES DUES AU TITRE
 A) DES CONTRIBUTIONS AU BUDGET REGULIER D'EXERCICES ANTERIEURS A 1997, ET
 B) DES CONTRIBUTIONS NON INSCRITES AU BUDGET (Fin)

Members and Associate Members	Unpaid arrears Arriees impayees 1 Jan 1997 (US\$)	Cash receipts & credits given Recettes et credits bonifies (US\$)	Balances due - Sommes restant dues								Membres et Membres associes
			1986-1990 (US\$)	1991 (US\$)	1992 (US\$)	1993 (US\$)	1994 (US\$)	1995 (US\$)	1996 (US\$)	Total (US\$)	
NICARAGUA	41,060					36,236	41,070	41,070	41,060	41,060	NICARAGUA
NIGER	159,946								41,570	159,946	NIGER
NIGERIA	440,492								440,492	440,492	NIGERIA
PAKISTAN	25,013								25,013	25,013	PAKISTAN
PANAMA	49,741							8,171	41,570	49,741	PANAMA
PARAGUAY	11,084	11,084							-	-	PARAGUAY
PERU	597,157	14,740					88,637	246,420	247,360	582,417	PEROU
POLAND	651,624								651,624	651,624	POLOGNE
PUERTO RICO	40,845								40,845	40,845	PORTO RICO
REPUBLIC OF MOLDOVA	2,150,079				577,909	616,050	616,050	616,050	340,070	2,150,079	REPUBLIQUE DE MOLDOVA
ROMANIA	618,185								618,185	618,185	ROUMANIE
RUSSIAN FEDERATION	32,637,205							14,814,240	17,822,965	32,637,205	FEDERATION DE RUSSIE
RWANDA	98,647						16,562	40,515	41,570	98,647	RWANDA
SAINT VINCENT AND THE GRENADINES	23,242	15,528							7,714	7,714	SAINT-VINCENT-ET-GRENADINES
SAUDI ARABIA	2,858,190	2,858,190							-	-	ARABIE SAOUDITE
SOLOMON ISLANDS	82,100		58,703	31,055	37,290	36,695	41,070	40,560	41,540	82,100	ILES SALOMON
SOMALIA	287,453							41,070	41,570	287,453	SOMALIE
SUDAN	81,345							39,970	41,375	81,345	SUDAN
SURINAME	41,060								41,060	41,060	SURINAME
TAJIKISTAN	714,525	49,974				171,324	205,350	205,350	82,525	664,549	TADJIKISTAN
TOGO	136,745					14,415	40,380	40,380	41,570	136,745	TOGO
TRINIDAD AND TOBAGO	141,350	95,932							45,418	45,418	TRINITE-ET-TOBAGO
TUNISIA	25,950								-	-	TUNISIE
TURKEY	650,000	612,618							37,390	37,390	TURQUIE
TURKMENISTAN	863,080				21,410	220,160	246,420	246,420	128,670	863,080	TURKMENISTAN
UKRAINE	23,923,670					4,256,450	7,556,865	7,556,865	4,553,490	23,923,670	UKRAINE
UNITED STATES OF AMERICA	39,239,549								39,239,549	39,239,549	ETATS-UNIS D'AMERIQUE
URUGUAY	309,477							144,632	164,845	309,477	URUGUAY
UZBEKISTAN	559,432							8,172	551,260	559,432	OUZBEKISTAN
VENEZUELA	5,161,956						1,884,101	1,923,220	1,354,635	5,161,956	VENEZUELA
YEMEN	126,662			1,090,110	1,339,660	478,022	14,022	61,070	51,570	126,662	YEMEN
YUGOSLAVIA	4,475,147						574,980	574,980	417,395	4,475,147	YUGOSLAVIE
ZAIRE	39,336								39,336	39,336	ZAIRE
Total A	168,007,574	9,909,382	1,600,503	1,711,230	2,833,808	10,726,874	17,830,055	36,136,696	87,259,028	158,098,194	Total A
UKRAINE	1,519,535				1,519,535					1,519,535	UKRAINE
Total B	1,519,535				1,519,535					1,519,535	Total B
Grand total	169,527,111	9,909,382	1,600,503	1,711,230	4,353,343	10,726,874	17,830,055	36,136,696	87,259,028	159,617,729	Total general

5. CONTRIBUTIONS FOR YEAR 1998 RECEIVED IN ADVANCE

5. CONTRIBUTIONS POUR L'ANNEE 1998 RECUES EN AVANCE

Members and Associate Members	Assessments Sommes fixées (US\$)	Cash receipts and credits given Encaissements et crédits bonifiés (US\$)	Balances due Sommes restant à payer (US\$)	Membres et Membres associés
ANGOLA	-	18,430	-	ANGOLA
BANGLADESH	-	1,540	-	BANGLADESH
BHUTAN	-	510	-	BHOUTAN
COLOMBIA	-	5,323	-	COLOMBIE
COSTA RICA	-	31,804	-	COSTA RICA
DEMOCRATIC PEOPLE'S REP. OF KOREA	-	2,570	-	REP. POPULAIRE DEM. DE COREE
FINLAND	-	24,125	-	FINLANDE
FRANCE	-	328,128	-	FRANCE
INDONESIA	-	6,680	-	INDONESIE
KIRIBATI	-	1,561	-	KIRIBATI
KUWAIT	-	12,338	-	KOWEIT
MALTA	-	510	-	MALTE
MAURITIUS	-	510	-	MAURICE
MONACO	-	510	-	MONACO
SAINT LUCIA	-	510	-	SAINTE-LUCIE
SENEGAL	-	2,713	-	SENEGAL
THE FORMER YUGOSLAV REP OF	-	29,306	-	EX-REP. YUGOSLAVE DE MACEDOINE
MACEDONIA	-		-	
TONGA	-	510	-	TONGA
TUNISIA	-	8,305	-	TUNISIE
Total in respect of above Members	-	475,867	-	Total concernant les Membres ci-dessus