

REPORT OF PARAGUAY

TABLE OF CONTENTS

1	Introduction
2	Methodology
2.1	Sampling
2.2.1	Geographic Component of the Survey
2.2.2	The map
2.3	Survey Metrics
2.3.1	Sample deviation index
2.3.2	HH Sample deviation index
2.3.3	Response rate
2.3.4	Missing data
2.3.5	Reliability
3	Socio-Demographic Profile
3.1	Household composition by residence and age groups according to income quintile
3.2	Selected age distributions by income quintile
3.3	Characteristics of head of household by income quintile
3.4	Household population: percent distribution of the de jure population by age, residence, marital status and education according to sex
3.5	Background characteristics of respondents: percent distribution of men and women by age, residence, marital status and education
4	Risk Factors
4.1	Prevalence of smoking and average daily tobacco consumption
4.2	Prevalence of life time abstainers, non-heavy drinkers, infrequent heavy drinkers and frequent heavy drinkers
4.3	Prevalence of insufficient intake of fruit and vegetables and insufficient physical activity

- 4.4 Access to improved drinking-water: percent distribution of households by type of access to drinking water
- 4.5 Access to improved sanitation: percent distribution of households by type of sanitation facility
- 4.6 Solid Fuel use for cooking: percent distribution of households by type of cooking fuel used
- 5 Coverage
 - 5.01 Tuberculosis
 - 5.02 HIV Prevention and Screening
 - 5.03 Antenatal Care and Mother to Child Transmission of HIV
 - 5.04 Birth Delivery Care
 - 5.05 Child's Health - Common Illness
 - 5.06 Child's Health - Danger Signs
 - 5.07 Vaccinations Meeting WHO Timeline Recommendations for Children 12 to 23 months of Age with Vaccination Card
 - 5.08 Vaccination Status of Children 12-23 Months
 - 5.09 Women's Cancer Screening
 - 5.10 Oral Health and Injuries
 - 5.11 Self Reported Non-Communicable Conditions
 - 5.12 Mental Health Conditions
 - 5.13 Cataracts
- 6 Health State Descriptions
 - 6.01 In general, rate your health today - q2000
 - 6.02 Difficulty with 'work and household activities' in last 30 days - q2001
 - 6.03 Difficulty with 'moving around' in last 30 days - q2010
 - 6.04 Difficulty with 'vigorous activities' in last 30 days - q2011
 - 6.05 Difficulty with 'self-care' in last 30 days - q2020
 - 6.06 Difficulty with 'taking care of and maintaining general appearance' in last 30 days - q2021

- 6.07 Amount of 'bodily aches or pains' in last 30 days - q2030
- 6.08 Amount of 'bodily discomfort' in last 30 days - q2031
- 6.09 Difficulty with 'concentrating or remembering things' in last 30 days - q2050
- 6.10 Difficulty with 'learning a new task' in last 30 days - q2051
- 6.11 Difficulty with 'personal relationships or participation in the community' in last 30 days - q2060
- 6.12 Difficulty with 'dealing with conflicts and tensions' in last 30 days - q2061
- 6.13 Difficulty with 'seeing and recognizing a person you know across the road (20m)' in last 30 days - q2071
- 6.14 Difficulty with 'seeing an object at arm's length or in reading' in last 30 days - q2072
- 6.15 Problem with 'sleeping' in last 30 days - q2080
- 6.16 Problem with 'feeling rested and refreshed' in last 30 days - q2081
- 6.17 Problem with 'feeling sad, low, or depressed' in last 30 days - q2090
- 6.18 Problem with 'worry or anxiety' in last 30 days - q2091
- 6.19 Adjusted for vignette responses
- 7 Health System Responsiveness
 - 7.1 Self-reported utilization of health services and perceived unmet need
 - 7.2 Patient assessed characteristics of ambulatory health services
 - 7.3.1 Patient assessment of responsiveness domains for ambulatory services: percent reporting "Moderate", "Bad" or "Very bad" - 1
 - 7.3.2 Patient assessment of responsiveness domains for ambulatory services: percent reporting "Moderate", "Bad" or "Very bad" - 2
 - 7.4 Patient assessed characteristics of hospital inpatient health services
 - 7.5.1 Patient assessment of responsiveness domains for hospital inpatient services: percent reporting "Moderate", "Bad" or "Very bad" - 1
 - 7.5.2 Patient assessment of responsiveness domains for hospital inpatient services: percent reporting "Moderate", "Bad" or "Very bad" - 2
 - 7.6 Importance of different domains of responsiveness: percent reporting "Extremely Important"
- 8 Health Expenditure, Insurance and Human Resources for Health

- 8.0 Expenditure Background Indicators (2002)
- 8.1 Distribution of health payments across different population groups
- 8.2 Percent distribution of structure of out-of-pocket health payments
- 8.3 Financial sources used by households for paying for health services
- 8.4 Insurance Coverage
- 8.5 Human resources for health
- 9.1 Adult Mortality Chart 1
- 9.2 Adult Mortality Chart 2
- 9.3 Adult Mortality Chart 3
- 9.4 Adult Mortality Chart 4
- 10 Stress and Social Capital
- 10.1 Inability to control the important things in life - q8000
- 10.2 Inability to cope - q8001
- 10.3 Satisfaction with your health - q8002
- 10.4 Feeling safe when alone at home - q8011
- 10.5 Feeling safe when walking down the street alone after dark - q8012

1. Introduction

The World Health Organization initiated the World Health Survey (WHS) as a *data collection platform* to obtain information on the health of populations and on health systems. The WHS responds to the need of countries for a detailed and sustainable health information system and gathers data through surveys to measure essential population health parameters. The WHS uses standard survey procedures and instruments for general population surveys to gather comparable data across WHO Member States. These methods and instruments have been refined through scientific review of literature, extensive consultations with international experts and large-scale pilot tests. WHS is designed to evolve through its implementation by continuous input from collaborators, including policy makers, survey institutions, scientists and other interested parties. The data is jointly owned by the countries and the WHO, and there is a commitment for a long-term data collection, building local capacity and using this information for health policy.

The objectives of the World Health Survey were to:

- develop a **means** of providing:
 - **valid, relevant, reliable** and **comparable** information on **outcomes, functions** and **inputs** to health systems
 - to **supplement** the information provided by routine **HIS**
- build the **evidence base** necessary for policy-makers:
 - to **routinely monitor** if health systems are achieving the **desired goals**
 - and in some countries, to assess if the **increase in health resources** is having the desired effect

The introductory chapter of each country report will provide details on the current sources of data from routine health information systems and ad hoc surveys. It will describe the health situation in the country and identify gaps. It will also present a brief overview on the health system organization within the country.

2. Sampling

The WHO sampling guidelines emphasized scientific principles of survey sampling as explicit standards for quality, included examples of good sampling plans, and identified quality assurance standards for countries to adhere to. WHO and technical advisers provided technical support to countries when needed. The following principles were used for sampling in the WHS:

1. The sample should target the *de facto* population (i.e. all people living in that country including guest workers, immigrants and refugees) and not *de jure* population (i.e. the citizens of that country alone) with complete geographic coverage of the country, if possible, or a representative geographic segment of the country.
2. A *sample frame* with 90% coverage that included all key subgroups of interest. Enumeration or listing of households to update the frame was recommended.
3. The WHS sample identified all adult members of the general population aged 18 years or older as its sample. Households are selected using a random, stratified sampling procedure. One individual per household is then selected through a random selection procedure using the Kish table method.
4. The WHS used a sampling strategy which encompasses a known non-zero selection probability for any individual included in the study. This makes it possible to extrapolate the data to the whole population. Households and individuals are selected with a known probability in order to provide selection probabilities for each household and individual in the data set.
5. The WHS sampling strategy was without replacement and categories of non-respondents were clearly defined.
6. The WHS used GPS devices in certain countries and digitized maps to geocode the data within specified guidelines.

Each national report will present a detailed description of the sampling strategy and the allocation tables

2.2.1 Geographic Component of the Survey

Geographic Information refers to any information associated with a location on the Earth's surface. This location can be associated to a coordinate (latitude/longitude), a place's name, a postal address or any other geographic object.

Household Surveys represent an important source of information. If the geographic location of the surveyed clusters is collected at the same time that the interview is conducted users are then able to integrate the spatial dimension in their analysis

The geographic component of the WHO WHS is stored in two sections of the questionnaire:

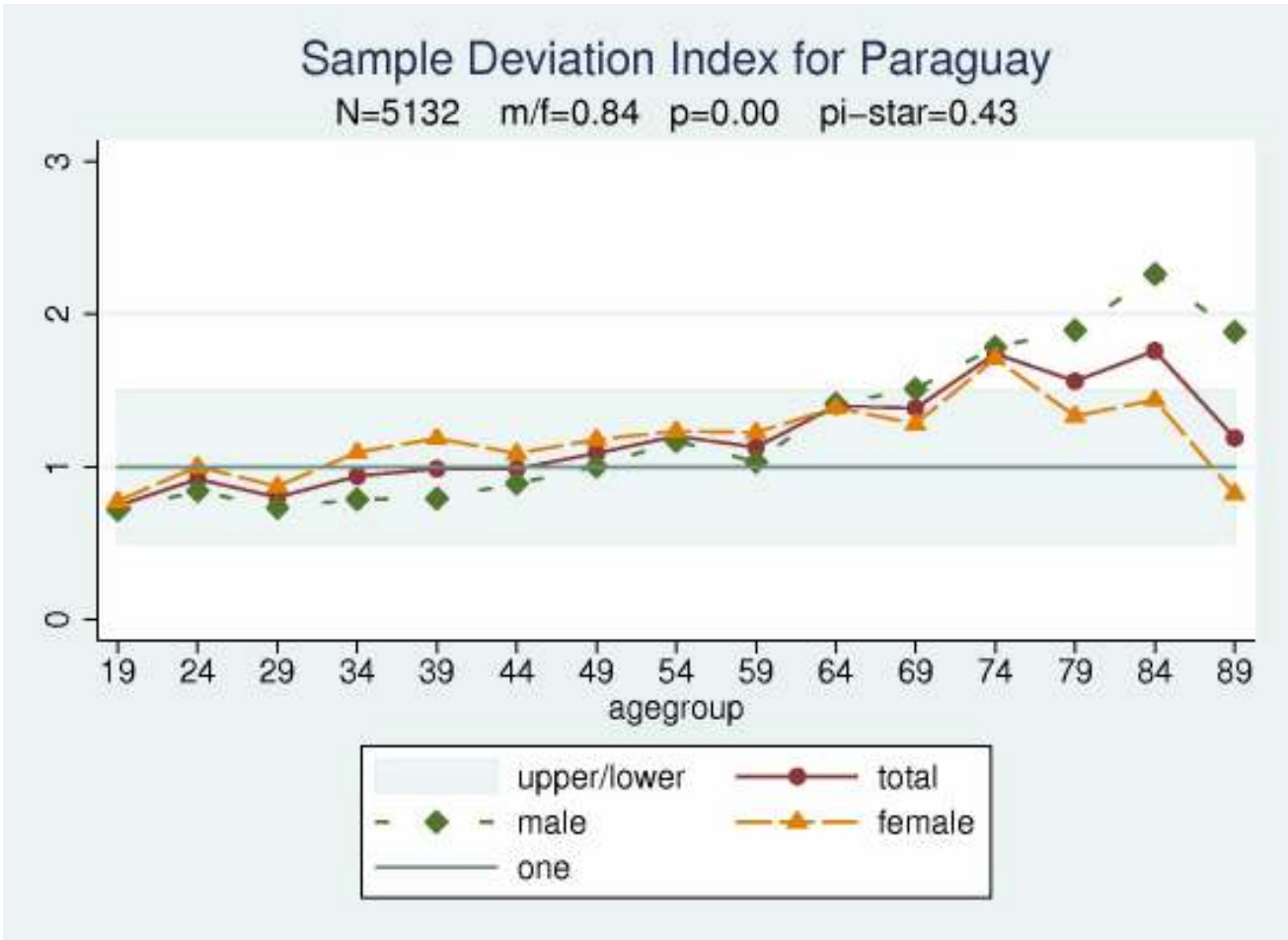
- 0100 Sampling Information allowing the link between the location of each cluster and the sampling frame used for the survey. This section has also been used in order to collect the type of setting in which each household was located at the time of the survey. This section of the questionnaire has been used for all the countries part of the WHO WHS
- 0200 Geocoding Information for the collection of the latitude and longitude of each household. This section has only been used in 27 countries where GPS devices were available or have been provided. The choice of these countries has been done on the basis of the availability of digital maps delimiting the surveyed clusters, the field data collection planning and their distribution within the different WHO regions. Specific training and field material have been prepared and used by the interviewers or field supervisors in these countries in order to collect the latitude and longitude of each of the surveyed household.

As the sampling design may not always include the administrative structure of the country and as the codes entered in the data set for the sampling level needed to be labelled, a key correspondence table containing this information has been collected after the survey itself.

Once all the survey data and the key correspondence table available a specific protocol has been applied to the two sections mentioned earlier in order to clean eventual data collection or data entry mistakes as well as to fill the gaps in close collaboration with the survey institution.

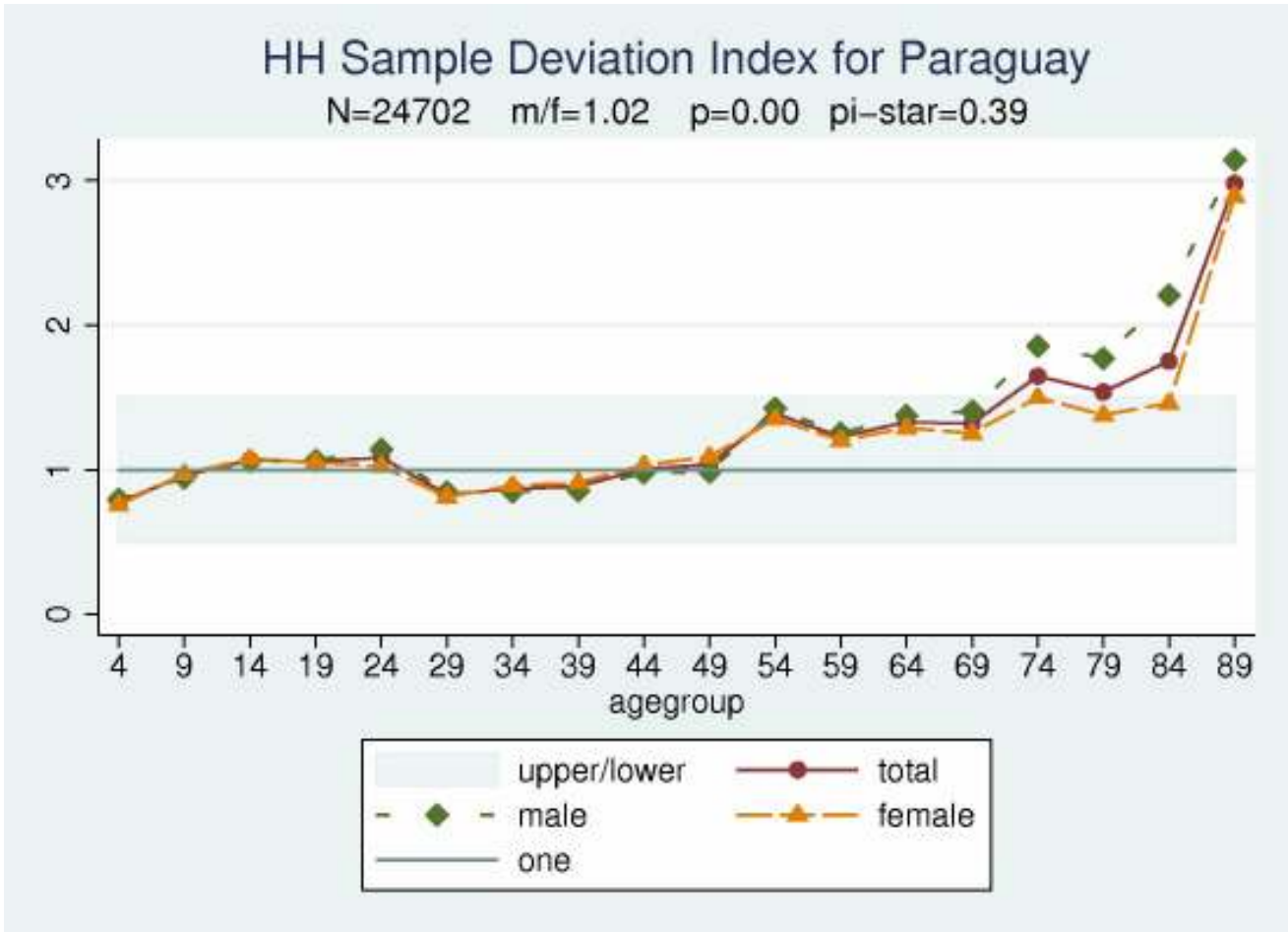
The questionnaire as well as the training material and data cleaning protocols used can be downloaded from the WHO WHS web site (<http://www.who.int/healthinfo/survey/en/index.html>) in the "Survey Instrument and Related Documents" section.

2.3.1 Sample deviation index



SDI

2.3.2 HH Sample deviation index



HDI

2.3.3 Response rate

Household

Selected	6,453
----------	-------

Interviewed	5,272
-------------	-------

Percentages	82
-------------	----

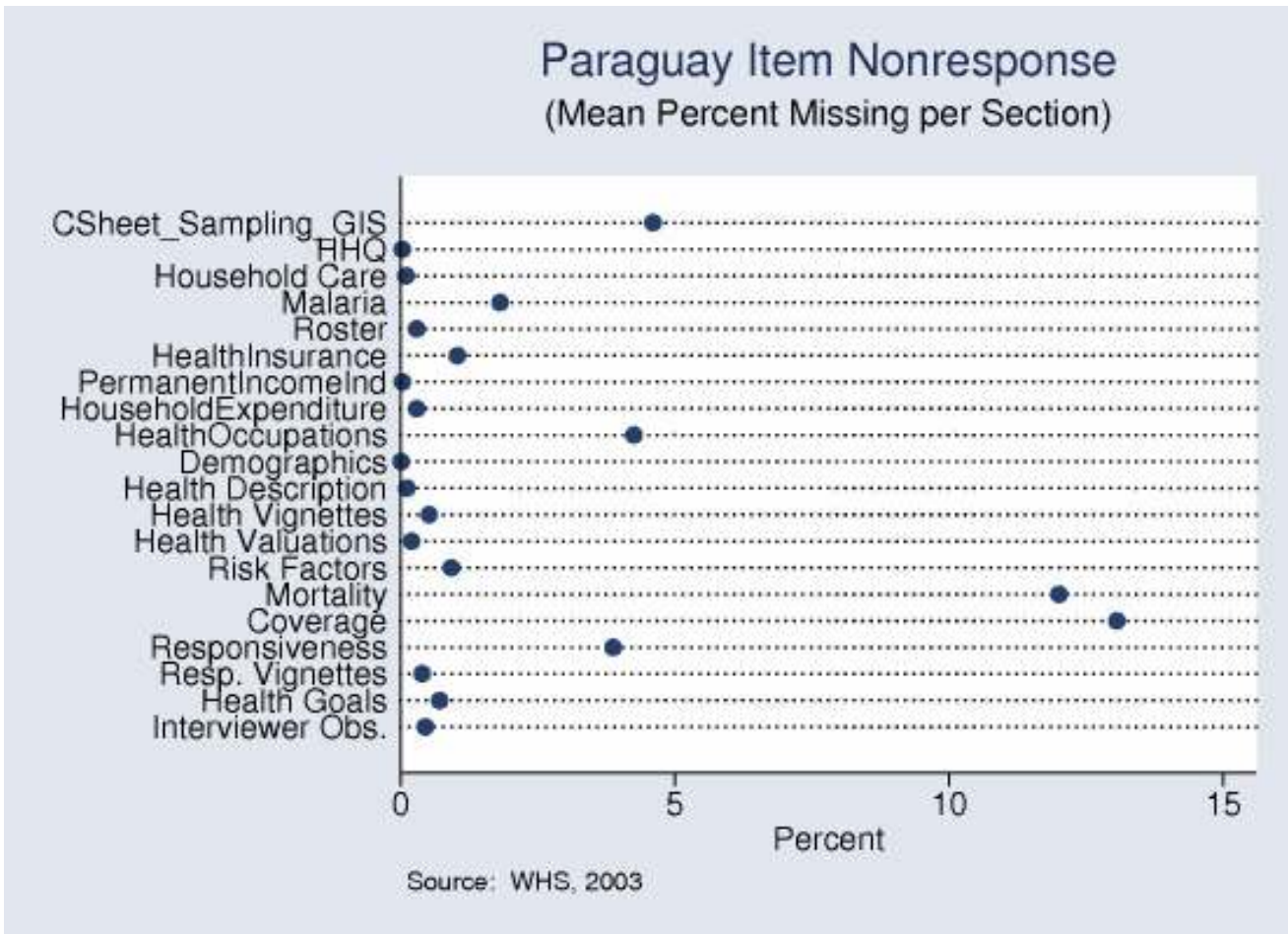
Individual

Selected	5,277
----------	-------

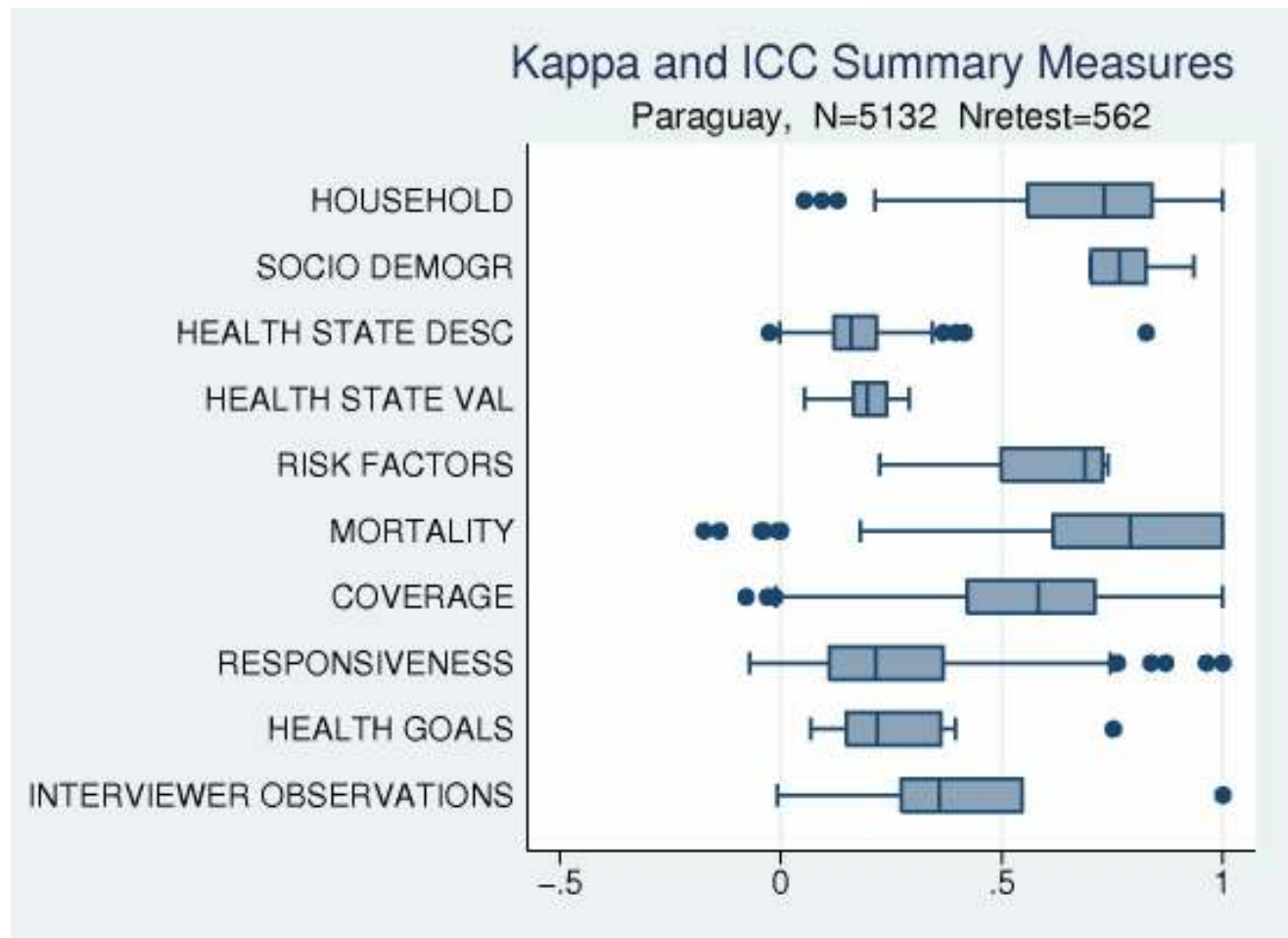
Interviewed	5,130
-------------	-------

Percentages	97
-------------	----

2.3.4 Missing data



2.3.5 Reliability



3.1 Household composition by residence and age groups according to income quintile

	Percent Rural	SE	Mean Number of									
			Household members	SE	Children < 2 years	SE	Children < 5years	SE	Children 5 -17 years	SE	Persons 18+ years	SE
Q1(poorest)	87.7	1.64	4.6	0.09	0.3	0.02	0.7	0.03	1.7	0.06	2.1	0.03
Q2	72.3	1.78	5.0	0.10	0.2	0.01	0.6	0.03	1.9	0.06	2.6	0.05
Q3	47.9	1.80	4.4	0.08	0.2	0.01	0.4	0.02	1.4	0.05	2.6	0.05
Q4	28.0	1.69	4.5	0.07	0.2	0.01	0.4	0.02	1.3	0.04	2.7	0.05
Q5(richest)	7.0	0.86	4.8	0.07	0.2	0.01	0.4	0.02	1.2	0.04	3.1	0.05
All	44.4	0.04	4.6	0.04	0.2	0.01	0.5	0.01	1.5	0.03	2.7	0.02

Note: table based on de jure members of household i.e. usual residents

3.2 Selected age distributions by income quintile

	Females Age 18–49	Persons Age 50+	Persons Age 60+
Q1(poorest)	639	457	275
Q2	798	618	334
Q3	918	688	402
Q4	1,173	805	435
Q5(richest)	1,627	1,146	582
All	5,155	3,716	2,028

Note: table based on de jure members of household i.e. usual residents

3.3 Characteristics of head of household by income quintile

	Mean Age of Head	SE	Median Education of Head	Percent Female Head	SE
Q1 (poorest)	43	0.59	2	20.3	1.42
Q2	45	0.59	2	21.9	1.45
Q3	45	0.59	3	26.7	1.57
Q4	45	0.55	3	29.9	1.50
Q5 (richest)	47	0.53	4	27.7	1.35
All	45	0.29	3	25.7	0.67

Education

1=no formal education

2=less than primary school

3=primary school completed

4=secondary school completed

5=high school (or equivalent) completed

6=college/pre-university/university completed

7=post graduate degree completed

Note: table based on de jure members of household i.e. usual residents

3.4 Household population: percent distribution of the de jure population by age, residence, marital status and education according to sex

	Male	SE	Female	SE	Missing	Total	SE
Age							
0-4	11.1	0.30	10.0	0.30		10.60	0.20
5-14	24.9	0.50	24.5	0.50		24.70	0.40
15-29	28.3	0.50	27.3	0.40		27.80	0.30
30-44	16.3	0.40	17.4	0.30		16.80	0.30
45-59	11.5	0.30	11.8	0.30		11.70	0.30
60-69	4.2	0.20	4.5	0.20		4.30	0.20
70-79	2.5	0.10	3.0	0.20		2.80	0.10
80+	1.1	0.10	1.5	0.10		1.30	0.10
Missing	0.1	0.00	0.0	0.00		0.00	0.00
Residence							
Urban	50.7	0.60	55.9	0.50		53.30	0.40
Rural	49.3	0.60	44.1	0.50		46.70	0.40
Missing	0.0	0.00	0.0	0.00		0.00	0.00
Marital_Status							
Never	63.8	0.40	59.0	0.40		61.40	0.40
Currently	24.7	0.40	25.5	0.40		25.10	0.40
Separated	1.0	0.10	1.5	0.10		1.30	0.10
Divorced	0.1	0.00	0.2	0.00		0.20	0.00
Widowed	1.3	0.10	4.1	0.20		2.70	0.10
CoHabiting	8.9	0.30	9.5	0.30		9.20	0.30
Missing	0.2	0.10	0.1	0.00		0.10	0.00
Education							
NoFormal	15.1	0.50	15.3	0.50		15.20	0.40
LessthanPrimary	38.4	0.60	37.7	0.60		38.00	0.50
Primary	31.2	0.60	30.1	0.60		30.70	0.50
Secondary	7.7	0.30	8.3	0.30		8.00	0.30
HighSchool	1.7	0.20	3.2	0.20		2.40	0.20
College	5.3	0.30	5.1	0.30		5.20	0.30
PostGraduate	0.3	0.10	0.3	0.10		0.30	0.10
Missing	0.2	0.10	0.1	0.00		0.10	0.00
Total	100.0		100.0			100.00	
Number	12,357.0		12,345.0			24,702.00	
Number of Households						5,272.00	

3.5 Background characteristics of respondents: percent distribution of men and women by age, residence, marital status and education

	Male	SE	Female	SE	Missing	Total	SE
Age							
18-29	39.2	1.20	38.2	1.10		38.70	0.80
30-44	32.9	1.20	32.4	1.10		32.70	0.80
45-59	18.8	0.90	18.3	0.80		18.50	0.70
60-69	5.9	0.50	6.3	0.50		6.10	0.40
70-79	2.4	0.30	3.5	0.40		3.00	0.20
80+	0.8	0.20	1.3	0.30		1.10	0.20
Missing	0.0	0.00	0.0	0.00		0.00	0.00
Residence							
Urban	52.2	1.00	61.0	0.90		56.60	0.40
Rural	47.8	1.00	39.0	0.90		43.40	0.40
Missing	0.0	0.00	0.0	0.00		0.00	0.00
Marital_Status							
Never	37.6	1.30	32.1	1.10		34.80	0.80
Currently	41.9	1.30	42.5	1.20		42.20	0.90
Separated	2.1	0.30	2.2	0.30		2.10	0.20
Divorced	0.3	0.10	0.3	0.20		0.30	0.10
Widowed	1.4	0.20	5.8	0.50		3.60	0.30
CoHabiting	16.8	1.00	17.2	0.90		17.00	0.70
Missing	0.0	0.00	0.0	0.00		0.00	0.00
Education							
NoFormal	2.6	0.50	4.4	0.50		3.50	0.40
LessthanPrimary	28.2	1.10	27.8	1.00		28.00	0.80
Primary	41.5	1.30	38.0	1.20		39.70	1.00
Secondary	13.7	0.90	12.8	0.90		13.30	0.60
HighSchool	3.9	0.60	6.7	0.60		5.30	0.40
College	9.6	0.90	9.5	0.80		9.50	0.60
PostGraduate	0.6	0.20	0.9	0.30		0.70	0.20
Missing	0.0	0.00	0.0	0.00		0.00	0.00
Total	100.0		100.0			100.00	
Number	2,545.0		2,586.0			5,131.00	

4.1 Prevalence of smoking and average daily tobacco consumption

	Current daily smoker	SE	Smoker, not daily	SE	Non-smoker	SE	Missing	Average daily tobacco consumption*	SE	Number of respondents
Sex										
Male	22.9	1.00	18.0	1.00	58.1	1.30	1.1	10.4	0.30	2,545
Female	6.4	0.50	6.8	0.60	86.6	0.80	0.2	5.9	0.50	2,586
Missing										0
Residence										
Urban	12.6	0.80	11.3	0.80	75.5	1.00	0.7	9.6	0.40	2,906
Rural	17.2	0.90	13.8	0.80	68.4	1.20	0.6	9.2	0.40	2,225
Missing										0
Income Quintile										
Q1	27.6	1.90	14.6	1.20	57.4	2.10	0.3	8.7	0.40	711
Q2	18.0	1.50	15.6	1.50	65.5	1.80	0.9	9.0	0.50	877
Q3	15.3	1.40	13.4	1.30	70.9	1.80	0.4	9.2	0.70	933
Q4	8.8	1.10	9.8	1.10	80.6	1.50	0.8	9.4	0.90	1,137
Q5	10.4	1.20	10.5	1.10	78.6	1.50	0.5	11.0	0.80	1,442
Missing										31
Age										
18-29	10.8	0.90	11.8	1.00	77.1	1.30	0.4	9.1	0.50	1,986
30-44	14.9	1.10	11.4	0.90	73.0	1.30	0.7	10.4	0.50	1,676
45-59	20.0	1.40	14.0	1.30	65.1	1.70	0.9	9.6	0.60	951
60-69	19.9	2.30	14.3	2.00	65.2	3.00	0.7	8.9	1.30	311
70-79	17.4	2.60	14.9	2.80	66.4	3.40	1.2	4.0	1.00	152
80+	12.8	4.00	15.0	3.90	71.7	5.50	0.4	2.6	0.80	55
Missing										0
All	14.6	0.60	12.4	0.60	72.4	0.80	0.6	9.4	0.30	5,131

* Denominator used is current daily smoker

4.2 Prevalence of life time abstainers, non-heavy drinkers, infrequent heavy drinkers and frequent heavy drinkers

	Life time abstainers	SE	Non-heavy drinkers	SE	Infrequent Heavy Drinkers*	SE	Frequent Heavy drinkers**	SE	Missing	Number of respondents
Sex										
Male	7.8	0.70	64.0	1.30	23.3	1.10	4.2	0.40	0.6	2,545
Female	28.1	1.10	67.7	1.10	3.6	0.40	0.3	0.10	0.2	2,586
Missing										0
Residence										
Urban	16.8	0.90	68.1	1.10	13.1	0.90	1.6	0.30	0.5	2,906
Rural	19.7	1.00	63.0	1.10	13.8	0.90	3.1	0.40	0.4	2,225
Missing										0
Income Quintile										
Q1	23.3	1.90	57.0	1.90	15.0	1.50	4.7	0.80	0.0	711
Q2	17.4	1.30	65.0	1.80	14.1	1.50	3.1	0.60	0.5	877
Q3	20.8	1.50	63.0	1.80	13.8	1.40	2.0	0.50	0.4	933
Q4	17.4	1.40	66.1	1.90	14.1	1.50	1.4	0.40	0.9	1,137
Q5	14.3	1.20	72.7	1.60	11.4	1.30	1.5	0.40	0.2	1,442
Missing										31
Age										
18-29	13.3	1.00	70.3	1.30	14.4	1.10	1.8	0.40	0.2	1,986
30-44	16.7	1.00	64.7	1.40	15.6	1.20	2.4	0.40	0.6	1,676
45-59	20.9	1.50	63.8	1.80	11.9	1.20	3.1	0.60	0.3	951
60-69	31.6	2.70	60.2	2.80	5.2	1.20	2.4	0.80	0.6	311
70-79	39.7	3.80	52.5	3.80	4.4	1.90	2.0	0.90	1.4	152
80+	42.8	7.90	48.2	7.70	7.0	3.40	1.5	1.50	0.4	55
Missing										0
All	18.0	0.70	65.9	0.80	13.4	0.60	2.3	0.20	0.4	5,131

*Infrequent heavy drinkers: 1-2 days with 5 or more standard drinks per week(last 7 days)

**Frequent heavy drinkers: 3 or more days with 5 or more standard drinks per week(last 7 days)

4.3 Prevalence of insufficient intake of fruit and vegetables and insufficient physical activity

	Fruit and vegetable intake					Physical Activity					Number of respondents
	*Insufficient	SE	Sufficient	SE	Missing	**Insufficient	SE	Sufficient	SE	Missing	
Sex											
Male	61.6	1.30	38.4	1.30	0.0	12.7	0.80	86.8	0.90	0.6	2,545
Female	71.5	1.10	28.5	1.10	0.0	15.5	0.90	84.4	0.90	0.2	2,586
Missing											0
Residence											
Urban	71.4	1.20	28.6	1.20	0.0	16.7	1.00	82.9	1.00	0.4	2,906
Rural	60.4	1.30	39.6	1.30	0.0	10.6	0.80	89.0	0.80	0.4	2,225
Missing											0
Income Quintile											
Q1	60.1	2.10	39.9	2.10	0.0	10.3	1.20	89.7	1.20	0.0	711
Q2	60.4	1.90	39.6	1.90	0.0	10.0	1.20	89.7	1.20	0.3	877
Q3	68.8	1.80	31.2	1.80	0.0	13.5	1.30	86.1	1.30	0.4	933
Q4	68.4	1.70	31.6	1.70	0.0	14.0	1.20	85.2	1.20	0.8	1,137
Q5	70.6	1.70	29.4	1.70	0.0	18.6	1.60	81.3	1.60	0.1	1,442
Missing											31
Age											
18-29	65.1	1.50	34.9	1.50	0.0	12.7	1.00	87.1	1.00	0.2	1,986
30-44	66.1	1.40	33.9	1.40	0.0	12.9	1.00	86.6	1.00	0.6	1,676
45-59	68.1	1.70	31.9	1.70	0.0	11.5	1.20	88.2	1.20	0.3	951
60-69	70.2	2.80	29.8	2.80	0.0	22.7	2.60	76.8	2.60	0.6	311
70-79	72.1	3.40	27.9	3.40	0.0	31.3	3.90	67.9	3.90	0.8	152
80+	75.4	7.60	24.6	7.60	0.0	47.9	7.90	51.7	7.90	0.4	55
Missing											0
All	66.6	0.90	33.4	0.90	0.0	14.1	0.70	85.6	0.70	0.4	5,131

*Insufficient intake of fruit/vegetables: less than 5 servings of fruit/vegetables per one typical day

**Insufficient physical activity: less than 150 minutes per week(last 7 days) spent on walking/moderate activity/vigorous activity

4.4 Access to improved drinking-water: percent distribution of households by type of access to drinking water

	Piped into households	SE	other improved sources	SE	Total improved sources	SE	No improved sources	SE	Missing	Number of households
Residence										
Urban	77.8	1.40	10.2	0.90	88.0	1.00	8.9	1.00	3.1	2,930
Rural	27.6	1.90	22.4	1.30	50.0	2.00	46.9	2.00	3.2	2,342
Missing										0
Income_Quintile										
Q1(poorest)	11.1	1.40	16.0	1.70	27.2	2.10	71.5	2.10	1.3	874
Q2	27.4	2.10	19.0	1.60	46.4	2.20	49.9	2.20	3.8	920
Q3	55.4	2.20	20.1	1.50	75.5	1.60	21.3	1.60	3.2	1,013
Q4	75.7	1.80	17.8	1.40	93.5	1.20	3.3	0.60	3.3	1,131
Q5(richest)	88.3	1.10	7.6	0.90	95.9	0.70	0.6	0.30	3.5	1,292
Missing										42
Total	55.5	1.20	15.6	0.80	71.1	1.10	25.7	1.10	3.1	5,272

other improved sources: public standpipe/protected tube well/borehole/protected dug well/protected spring/rainwater collection

no improved sources: unprotected well/unprotected spring/water taken directly from a pond or stream/tanker truck water/vendor provided water

4.5 Access to improved sanitation: percent distribution of households by type of sanitation facility

	Flush toilet to sewage system	SE	Other improved toilet facilities	SE	Total improved sanitation	SE	No improved sanitation	SE	Missing	Number of households
Residence										
Urban	18.3	1.30	61.8	1.60	80.1	1.20	16.7	1.20	3.2	2,930
Rural	0.2	0.10	32.3	1.60	32.5	1.60	64.4	1.60	3.1	2,342
Missing										0
Income_Quintile										
Q1(poorest)	0.0	0.00	6.2	0.90	6.2	0.90	92.5	0.90	1.3	874
Q2	1.1	0.40	24.4	1.70	25.5	1.70	70.8	1.80	3.7	920
Q3	4.1	0.80	55.7	1.90	59.8	1.90	37.0	1.90	3.2	1,013
Q4	9.1	1.30	75.5	1.80	84.7	1.50	12.1	1.10	3.3	1,131
Q5(richest)	29.5	2.20	66.1	2.20	95.6	0.60	0.8	0.30	3.6	1,292
Missing										42
Total	10.3	0.70	48.7	1.10	58.9	1.00	37.9	1.00	3.1	5,272

other improved sanitation facilities: connection to septic system/pour-flush latrine/covered dry latrine(with privacy) [provided facilities not shared]
no improved sanitation: uncovered dry latrine(without privacy)/bucket latrine/no facilities(open defecation)

4.6 Solid Fuel use for cooking: percent distribution of households by type of cooking fuel used

	Electricity, Gas	SE	Kerosene	SE	Solid fuels on improved stove	SE	Solid fuels on traditional stove	SE	Total solid fuel use	SE	Missing	Number of households
Residence												
Urban	67.8	1.50	0.1	0.00	0.6	0.20	28.3	1.40	28.9	1.50	3.3	2,930
Rural	16.5	1.20	0.0	0.00	3.4	0.50	77.0	1.30	80.4	1.30	3.1	2,342
Missing												0
Income_ Quintile												
Q1(poorest)	2.4	0.60	0.0	0.00	0.6	0.30	95.4	0.70	96.1	0.70	1.5	874
Q2	10.0	1.40	0.0	0.00	2.3	0.40	84.0	1.50	86.2	1.50	3.8	920
Q3	35.0	1.80	0.2	0.10	2.6	0.50	59.0	1.80	61.6	1.80	3.3	1,013
Q4	63.7	1.80	0.0	0.00	3.0	0.60	30.0	1.70	33.0	1.80	3.3	1,131
Q5(richest)	90.4	1.00	0.0	0.00	0.9	0.30	5.2	0.70	6.1	0.80	3.5	1,292
Missing												42
Total	45.0	1.00	0.0	0.00	1.9	0.20	49.9	1.00	51.8	1.00	3.2	5,272

5.01 Tuberculosis

		Tuberculosis			
	Total	Need	Coverage	SE	M
Sex					
Female	2,586	7.8	7.7	2.4	0.0
Male	2,545	6.8	5.3	2.2	0.0
Missing	0				
Residence					
Urban	2,906	7.4	9.4	3.3	0.0
Rural	2,225	7.2	2.7	1.2	0.0
Missing	0				
Income_Quintile					
Q1(poorest)	711	9.0	2.3	1.8	0.0
Q2	877	7.6	0.8	0.8	0.0
Q3	933	8.3	8.3	4.6	0.0
Q4	1,137	6.6	13.2	5.3	0.0
Q5(richest)	1,442	6.1	7.0	3.1	0.0
Missing	31				
Age					
18-29	1,986	7.4	6.9	4.5	0.0
30-44	1,676	5.6	6.2	2.9	0.0
45-59	951	8.3	4.5	2.4	0.0
60-69	311	9.9	4.6	3.2	0.0
70-79	152	12.6	13.9	6.8	0.0
80+	55	10.1	17.8	11.7	0.0
Missing	0				
Total	5,131	7.3	6.6	2.0	0.0

M = % Missing of Covered SE= Standard Error of % Covered

Tuberculosis Indicators:

"Need" = % of all respondents with self-reported continuous cough lasting 3 weeks, OR had blood in phlegm, OR had coughed blood in the last 12 months

"Coverage" = % of respondents with self reported symptoms who indicated receiving a TB screening test in the last 12 months.

5.02 HIV Prevention and Screening

	Total (persons of reproductive age 18-49)	Voluntary Counselling and Testing for HIV/AIDS				Condom Usage			
		Need	Coverage	SE	M	Need	Coverage	SE	M
Sex									
Females	2,056	78.2	4.9	0.7	17.7	17.3	47.4	3.8	0.0
Males	2,049	89.2	0.7	0.3	84.4	35.7	55.2	2.5	0.0
Missing									
Residence									
Urban	2,311	83.0	4.4	0.6	52.1	28.0	61.0	2.8	0.0
Rural	1,794	84.7	0.5	0.2	54.6	24.5	40.4	2.9	0.0
Missing									
Income_Quintile									
Q1(poorest)	582	87.9	0.4	0.3	58.1	20.7	23.4	4.2	0.0
Q2	707	82.4	0.7	0.3	55.4	27.8	40.6	4.2	0.0
Q3	726	84.8	1.4	0.8	55.7	23.9	62.6	4.5	0.0
Q4	908	84.7	2.7	0.7	49.5	26.3	59.8	4.8	0.0
Q5(richest)	1,154	81.4	6.0	1.0	50.8	30.4	59.7	4.1	0.0
Missing	27								
Total	4,105	83.7	2.7	0.4	53.2	26.5	52.7	2.1	0.0

M = % Missing of Covered SE= Standard Error of % Covered

HIV Prevention and Screening Indicators:

"Total" = number of respondents of reproductive age.

"Voluntary Counselling and Testing for HIV/AIDS Need" = % of respondents of reproductive age who are sexually active, i.e. have had sexual intercourse in the last 12 months.

"Voluntary Counselling and Testing for HIV/AIDS Coverage" = % of respondents of reproductive age who are sexually active who indicated having taken an HIV test and receiving the results of test.

"Condom Usage Need" = % of respondents of reproductive age whose last sexual encounter during the last 12 months is classified as risky sexual behavior, i.e. having had sexual intercourse with a non-cohabitating partner .

"Condom Usage Coverage" = % of respondents of reproductive age who used a condom last time had risky sex during the last 12 months (with non-cohabitating partner).

5.03 Antenatal Care and Mother to Child Transmission of HIV

	Antenatal Care											Maternal to Child HIV Trans.			
	Women 18-49	Birth in last 5 years	Cov	SE	Visit 1x	Visit 2x	Visit 3x	Blood pressure checked	Blood sample taken	Told Signs of Pregnancy Complications	M	Birth in last 2 years	Cov	SE	M
Residence															
Urban	1,255	36.3	55.4	2.9	77.4	76.6	75.8	82.4	78.4	63.7	12.9	14.5	23.1	4.3	1.7
Rural	802	44.8	25.7	2.2	58.1	56.2	52.8	72.5	47.8	41.4	10.8	19.7	4.5	1.5	3.0
Missing															
Income_Quintile															
Q1(poorest)	251	59.1	17.2	2.9	51.4	46.3	42.0	62.5	35.9	33.4	6.3	31.4	2.4	1.5	0.0
Q2	308	49.1	26.3	3.9	61.1	60.6	57.2	80.4	55.2	43.7	8.1	22.8	5.8	4.3	3.5
Q3	354	43.4	37.4	4.1	67.7	67.2	65.0	74.9	64.5	49.6	16.1	15.4	16.3	5.6	3.4
Q4	468	35.0	59.5	4.3	76.4	75.5	75.0	84.5	77.2	69.9	11.9	13.8	19.9	7.2	4.4
Q5(richest)	659	28.8	63.6	4.0	83.2	83.2	83.2	85.5	84.9	67.7	15.8	10.3	30.3	7.5	0.0
Missing	16														
Total	2,056	39.6	42.3	2.0	68.9	67.6	65.7	78.0	64.9	53.9	12.0	16.5	14.5	2.5	2.3

M = % Missing of Covered SE= Standard Error of %Covered

Antenatal Care Indicators:

Total = Number of female respondents of reproductive age (18-49 years old)

"Birth in Last 5 Years" = % of female respondents of reproductive age indicating having had a live birth in the last 5 years.

"Cov" = % of female respondents of reproductive age with live birth in the last 5 years who indicated having been seen at least 3 times or more by health care professional, received blood pressure, blood sample taken, and told signs about complications for their last pregnancy (aggregate antenatal care indicator).

"Visit 1x" "Visit 2x" "Visit 3x" = % of female respondents of reproductive age with live birth in the last 5 years who indicated having been seen at least once, twice or three times or more respectively by a health care professional during their last pregnancy.

"Blood pressure checked" = % of female respondents of reproductive age with live birth in the last 5 years who had blood pressure taken when they saw health care professional during their last pregnancy.

"Blood sample taken" = % of female respondents of reproductive age with live birth in the last 5 years who had a blood sample taken when they saw health care professional during their last pregnancy.

"Told Signs of Pregnancy Complications" = % of female respondents of reproductive age with live birth in the last 5 years who had been told signs of pregnancy complications when they saw health care professional during their last pregnancy.

Maternal to Child HIV Transmission Indicators:

"Birth in last 2 years" = % of female respondents of reproductive age indicating having had a live birth in the last 2 years.

"Cov" = % of female respondents of reproductive age with live birth in the last 2 years who indicated having been counseled and tested and given results for HIV during their last pregnancy.

5.04 Birth Delivery Care

	Women 18-49	Delivery Care				Place of Delivery						
		Need	Coverage	SE	M	Public Health Facility	SE	Private Health Facility	SE	Home	SE	M
Residence												
Urban	1,255	36.3	75.7	2.4	10.2	55.4	2.8	26.3	2.6	7.9	1.5	10.3
Rural	802	44.8	52.9	2.6	10.5	47.4	2.7	11.9	1.8	29.9	2.5	10.8
Missing												
Income Quintile												
Q1(poorest)	251	59.1	34.1	3.3	6.1	32.0	3.2	11.3	2.2	50.1	3.5	6.5
Q2	308	49.1	58.0	4.4	7.2	59.1	4.4	8.8	2.0	24.1	4.2	8.0
Q3	354	43.4	67.5	4.3	15.8	60.4	4.3	11.6	2.3	12.2	2.9	15.8
Q4	468	35.0	77.4	3.6	9.8	60.5	4.4	23.2	3.8	6.5	1.9	9.8
Q5(richest)	659	28.8	84.8	3.2	11.6	46.5	4.5	40.3	4.5	1.5	1.1	11.6
Missing	16											
Total	2,056	39.6	65.6	1.8	10.3	51.9	2.0	20.0	1.7	17.6	1.5	10.5

M = % Missing of Covered SE= Standard Error of % Covered Birth Delivery Care Indicators:

Total = Number of female respondents of reproductive age (18-49 years old)

"Birth in Last 5 Years" = % of female respondents of reproductive age indicating having had a live birth in the last 5 years.

"Coverage" = % of female respondents of reproductive age with live birth in the last 5 years who indicated having received assistance with birth delivery from a health care professional (doctor, nurse or midwife) during their last birth.

"Public Health Facility" = % of female respondents of reproductive age with live birth in the last 5 years who indicated having their last birth delivered in a public health facility.

"Private Health Facility" = % of female respondents of reproductive age with live birth in the last 5 years who indicated having their last birth delivered in a private health facility.

"Home" = % of female respondents of reproductive age with live birth in the last 5 years who indicated having their last birth delivered home or in the field (etc.)

5.05 Child's Health - Common Illness

	Total Children under Age of 5	Fever	More liquid	SE	Same or more food	SE	M	Cough	More liquid	SE	Same or more food	SE	M	Diarrhea	More liquid	SE	Same or more food	SE	M
Sex																			
Females	900	52.4	35.5	2.8	39.9	3.0	0.3	37.2	37.1	3.3	39.7	52.4	0.3	18.0	43.5	5.0	41.6	5.0	0.0
Males	1,053	50.1	32.5	2.4	36.9	2.5	0.5	37.0	31.7	2.8	40.1	50.1	0.4	16.5	34.1	4.4	29.8	4.3	0.9
Missing	0																		
Residence																			
Urban	1,046	47.1	31.4	2.6	36.9	3.0	0.6	35.4	31.9	3.2	38.0	47.1	0.5	15.6	29.2	4.2	38.5	5.4	0.5
Rural	907	55.8	36.4	2.5	39.7	2.5	0.3	39.0	36.6	3.0	41.9	55.8	0.2	19.0	47.5	4.8	32.6	4.3	0.4
Missing																			
Income_Quintile																			
Q1(poorest)	348	56.1	38.6	3.6	38.1	3.4	0.4	38.9	42.4	4.5	40.4	56.1	0.0	17.8	51.7	7.0	33.0	6.5	1.2
Q2	398	54.9	38.7	3.7	42.9	3.7	0.0	41.8	33.4	3.8	43.9	54.9	0.0	18.1	44.1	6.7	33.6	6.0	1.2
Q3	355	51.6	28.3	3.8	37.6	4.1	0.6	39.2	28.2	4.3	41.6	51.6	0.8	23.1	34.2	6.6	43.8	7.3	0.0
Q4	378	51.3	30.8	4.4	33.4	4.4	1.2	33.7	30.0	5.1	37.1	51.3	1.1	16.7	45.5	8.7	22.2	6.5	0.0
Q5(richest)	463	43.4	32.1	4.6	39.1	4.7	0.0	33.3	37.1	5.6	35.9	43.4	0.0	11.4	12.4	5.4	45.6	10.2	0.0
Missing	10																		
Total	1,952	51.2	33.9	1.8	38.4	1.9	0.4	37.1	34.2	2.2	39.9	51.2	0.4	17.2	38.6	3.4	35.5	3.4	0.5

M = % Missing of Covered SE= Standard Error of % Covered

Child's Common Illness Indicators:

Total = Number of children under the age of 5 years at the time of the interview.

"Fever"/"Cough"/"Diarrhea" = % of children under the age of 5 with reported episode of (cough, fever, or diarrhea) in the last 3 months.

"More Liquid" = % of children under 5 with either fever, cough, or diarrhea in the last 3 months, that were given more liquids to drink during their illness.

"Same or More Food" = % of children under 5 with either fever, cough, or diarrhea in the last 3 months, that were given the same amount or more food to eat during their illness.

5.06 Child's Health - Danger Signs

	Children under 5	Fast Breath	Seeking Treatment						Vomit	Seeking Treatment						No Drink or Eat	Seeking Treatment					
			Yes	SE	Public	Private	Trad	M		Yes	SE	Public	Private	Trad	M		Yes	SE	Public	Private	Trad	M
Sex																						
Females	900	0.2	66.5	4.5	60.1	24.1	7.3	0.9	13.1	78.1	5.3	50.5	33.9	5.7	0.0	13.2	79.1	3.8	47.6	34.9	7.9	0.0
Males	1,053	0.2	72.1	3.3	61.7	23.4	11.3	0.0	11.2	81.4	3.9	58.8	21.2	13.5	0.0	12.0	82.6	3.2	59.6	24.2	8.2	0.4
Missing	0																					
Residence																						
Urban	1,046	0.2	84.3	2.8	58.1	32.9	5.0	0.0	11.1	92.0	3.3	56.8	37.0	3.4	0.0	11.4	92.6	2.2	54.4	38.3	3.3	0.0
Rural	907	0.2	55.3	4.3	65.4	10.2	16.4	0.8	13.2	67.9	5.2	51.9	14.8	18.0	0.0	14.0	70.0	4.2	53.3	18.1	14.0	0.4
Missing																						
Income_Quintile																						
Q1(poorest)	348	0.3	50.2	6.0	54.2	9.9	12.1	1.9	12.6	64.8	8.5	52.2	12.3	22.6	0.0	12.7	56.1	7.1	35.2	16.8	20.7	0.0
Q2	398	0.3	57.2	5.4	78.6	6.8	14.6	0.0	11.5	61.6	8.8	64.6	9.5	8.8	0.0	12.1	79.5	5.9	69.3	10.8	7.8	0.0
Q3	355	0.2	74.4	5.7	52.7	31.1	11.8	0.0	12.2	91.3	4.4	46.6	34.9	8.3	0.0	12.5	80.0	6.0	56.7	39.5	2.4	0.0
Q4	378	0.2	81.9	5.3	72.2	14.8	9.5	0.0	12.0	89.0	5.1	73.5	8.4	11.1	0.0	14.8	91.2	4.3	56.0	24.7	8.5	0.9
Q5(richest)	463	0.2	89.4	4.5	47.8	47.0	3.2	0.0	11.8	89.3	5.9	44.0	52.7	3.2	0.0	11.3	92.6	3.7	46.4	48.0	5.6	0.0
Missing	10																					
Total	1,952	0.2	69.6	2.8	61.0	23.7	9.6	0.4	12.1	79.7	3.4	54.7	27.4	9.7	0.0	12.6	80.9	2.5	53.9	29.3	8.1	0.2

M = % Missing of those Seeking Treatment SE= Standard Error of % Seeking Treatment

Child Danger Signs Indicators:

Total = Number of children under the age of 5 years at the time of the interview.

"Fast Breathing"/"Vomiting"/"No Drink or Eat" = % of children under the age of 5 with reported episodes of (fast breathing, vomiting, or no eating or drinking) in the last 3 months.

"Seeking Treatment" = % of children under 5 with episodes of fast breathing, vomiting, or no eating or drinking in the last 3 months that were taken for care/treatment at either a private health facility, public health facility, or traditional healer (other).

Note: large number of missings are usually due to not having information type of facility (either a no answer or a don't know answer).

5.07 Vaccinations Meeting WHO Timeline Recommendations for Children 12 to 23 months of Age with Vaccination Card

	Children 12-23 months with card	DPT 3 Immunization			Measles		
		%Cov	SE	M	%Cov	SE	M
Sex							
Females	139	65.5	5.1	0.0	31.5	4.8	0.0
Males	163	66.7	4.5	0.0	33.4	4.5	0.0
Missing	0						
Residence							
Urban	151	70.2	4.4	0.0	28.5	5.0	0.0
Rural	150	62.1	4.6	0.0	36.5	4.4	0.0
Missing	0						
Income_Quintile							
Q1(poorest)	65	58.6	6.6	0.0	33.7	6.6	0.0
Q2	68	57.5	6.6	0.0	37.9	7.3	0.0
Q3	52	70.0	7.1	0.0	24.2	6.4	0.0
Q4	46	67.8	8.0	0.0	28.0	7.5	0.0
Q5(richest)	70	77.5	6.3	0.0	35.4	8.7	0.0
Missing	0						
Total	301	66.1	3.2	0.0	32.5	3.4	0.0

M = % Missing of Covered SE= Standard Error of % Covered

Vaccinations Meeting WHO Timeline for Children 12 - 23 months Indicators:

Total = Children 12 - 23 months with a vaccination card seen by the interviewer (does not include children less than 12 months to account for censored observations).

"DPT 3" = % of children 12 - 23 months with a vaccination card seen by the interviewer who received 3 inoculations of DTP not sooner than 6, 10 and 14 weeks respectively and before 12 months of age, and that was verified by the interviewer as being recorded on the card.

"Measles" = % of children 12 - 23 months with a vaccination card seen by the interviewer who received who received 1 inoculation of measles not sooner than 8 months of age and before 12 months of age.

5.08 Vaccination Status of Children 12-23 Months

	Children 12-23 months	Card seen			DPT 3 Immunization							Measles						
		Seen	SE	M	Total		Card		No Card		M	Total		Card		No Card		M
					%Cov	SE	%Cov	SE	%Cov	SE		%Cov	SE	%Cov	SE	%Cov	SE	
Sex																		
Females	223	62.3	4.0	0.0	62.8	4.3	86.1	3.8	13.9	3.8	14.2	72.1	4.2	74.6	4.6	25.4	4.6	9.3
Males	267	60.9	3.9	0.0	66.0	3.5	77.9	3.9	22.1	3.9	13.7	71.5	3.9	72.5	4.1	27.5	4.1	6.7
Missing	0																	
Residence																		
Urban	252	59.9	4.3	0.0	68.5	4.2	79.0	4.4	21.0	4.4	14.4	69.8	4.8	72.4	4.5	27.6	4.5	10.4
Rural	238	63.2	3.4	0.0	60.4	3.4	84.5	2.7	15.5	2.7	13.5	73.8	3.1	74.5	4.0	25.5	4.0	5.2
Missing	0																	
Income_Quintile																		
Q1(poorest)	95	68.6	4.4	0.0	60.3	5.0	91.2	3.8	8.8	3.8	10.0	70.1	4.7	82.5	4.3	17.5	4.3	3.5
Q2	107	63.7	5.1	0.0	57.3	5.4	81.1	4.9	18.9	4.9	10.4	77.4	4.2	73.8	5.9	26.2	5.9	1.7
Q3	80	64.6	6.8	0.0	74.9	5.6	78.8	7.5	21.2	7.5	7.1	71.2	6.6	75.7	7.2	24.3	7.2	9.7
Q4	78	59.9	7.0	0.0	74.4	6.4	75.1	7.7	24.9	7.7	15.4	77.4	6.0	67.9	7.7	32.1	7.7	6.5
Q5(richest)	125	55.8	6.2	0.0	63.1	6.5	82.4	6.4	17.6	6.4	23.6	67.1	7.2	69.1	6.6	30.9	6.6	16.1
Missing	5																	
Total	490	61.5	2.8	0.0	64.6	2.7	81.5	2.7	18.5	2.7	14.0	71.7	2.9	73.4	3.0	26.6	3.0	7.9

M = % Missing (% without adequate information to estimate Total DPT3 or Measles Coverage)

SE= Standard Error of % Total, DPT3 or Measles Coverage

Explanation of Indicators for Vaccination Status of Children 12 - 23 Months:

"Card Seen" = % of children 12 - 23 months of age who had a vaccination card seen by the interviewer.

"DPT 3 Immunization": does not account for WHO timeline recommendations.

"Total" = % of all children 12 - 23 months of age with DPT3 vaccination either verified by card or by recall of respondent.

"Card" = % of all DPT3 vaccinations among children 12-23 months that were verified by card only.

"No Card" = % of all DPT3 vaccinations among children 12-23 months that were based on recall of the respondent only.

"Measles": does not account for WHO timeline recommendations.

"Total" = % of all children 12 - 23 months of age with measles vaccination either verified by card or by recall of respondent.

"Card" = % of all Measles vaccinations among children 12-23 months that were verified by card only.

"No Card" = % of all Measles vaccinations among children 12-23 months that were based on recall of the respondent only.

5.09 Women's Cancer Screening

	Total Females	Percent Females 18+	PAP Smear	SE	M	Percent Females 40+	Mammography / Breast Exam	SE	M
Residence									
Urban	1,577	94.8	49.9	1.5	0.9	33.0	18.9	2.3	1.3
Rural	1,009	95.7	38.3	1.6	1.4	35.9	6.2	1.3	3.5
Missing	0								
Income_Quintile									
Q1(poorest)	317	94.0	30.1	2.8	0.5	31.7	2.1	1.2	2.4
Q2	379	95.1	37.8	2.7	2.3	34.2	5.9	1.9	4.9
Q3	474	94.4	44.2	2.7	0.9	37.8	8.7	2.6	1.7
Q4	583	96.4	46.8	2.5	1.0	35.1	12.8	2.5	1.7
Q5(richest)	816	95.1	54.7	2.3	1.0	32.5	25.9	3.8	1.7
Missing	19								
Age									
18-29	987	38.2	37.6	1.9	0.8				
30-39	591	22.8	58.8	2.3	0.8				
40-49	478	18.5	53.3	2.7	1.2	18.5	14.6	2.3	1.8
50-59	242	9.4	39.2	3.3	2.0	9.4	13.8	2.4	2.9
60-69	162	6.3	29.4	4.0	2.4	6.3	10.7	2.4	2.6
70+	125	4.8	0.0	0.0		4.8	0.0	0.0	
Missing	0								
Total	2,586	95.2	45.4	1.1	1.1	34.1	13.7	1.5	2.2

M = % Missing of those with Pap Smear/Mammography SE= Standard Error of % with Pap Smear/Mammography

***Note: Values in the age row under the "Females 18 plus" and "Females 40 plus" columns are column percent values.

Women's Cancer Screening Indicators:

"Papsmear need" = % of all female respondents aged 18-69

"Papsmear" coverage = % of those female respondents aged 18-69 who self-reported receiving a pap smear test during pelvic examination in the last 3 years.

"Mammography need" = % of all female respondents aged 40-69

"Mammography" coverage = % of those female respondents aged 40-69 who self-reported receiving a mammography test or breast examination in the last 3 years.

****In several countries women above age 69 were asked the cancer screening questions, and for this reason they are included in the table. For countries that did not ask this questions of women above age 69, these values are expected to be missing.

5.10 Oral Health and Injuries

		Oral Health Problems				Road Traffic Accidents				Injury				
	Total	Need	Coverage	SE	M	Need	Coverage	SE	M	Need	Coverage	SE	M	
Sex														
Female	2,586	41.6	63.2	1.8	0.0	1.1	28.6	9.1	2.6	6.0	19.8	3.6	0.0	
Male	2,545	41.4	54.3	2.0	0.0	2.3	28.3	7.3	0.8	8.5	23.4	3.7	0.0	
Missing	0													
Residence														
Urban	2,906	43.1	66.9	1.9	0.0	1.7	30.0	7.3	1.4	7.4	26.7	4.0	0.0	
Rural	2,225	39.4	47.2	2.1	0.0	1.6	26.1	9.8	1.3	7.0	15.2	3.1	0.0	
Missing	0													
Income_Quintile														
Q1(poorest)	711	38.0	27.5	2.9	0.0	0.9	26.4	16.7	0.0	4.6	16.4	6.2	0.0	
Q2	877	37.8	46.2	3.0	0.0	2.1	37.2	14.8	0.0	7.6	10.8	4.2	0.0	
Q3	933	40.6	50.7	3.1	0.0	1.8	12.6	6.9	2.7	7.1	24.9	5.6	0.0	
Q4	1,137	43.2	64.0	3.0	0.0	1.9	25.4	9.9	0.0	7.2	28.3	6.9	0.0	
Q5(richest)	1,442	44.5	79.3	2.2	0.0	1.5	36.7	12.6	3.3	8.4	23.4	4.9	0.0	
Missing	31													
Age														
18-29	1,986	49.4	64.7	2.1	0.0	2.9	1.3	7.3	1.3	9.8	22.8	4.1	0.0	
30-44	1,676	38.5	54.7	2.5	0.0	1.0	0.0	10.8	0.0	5.6	24.1	5.3	0.0	
45-59	951	37.3	54.4	3.2	0.0	0.8	0.0	20.5	0.0	5.1	18.2	6.5	0.0	
60-69	311	27.2	53.9	5.8	0.0	0.6	0.0	25.1	0.0	6.5	13.4	7.3	0.0	
70-79	152	26.6	41.6	8.2	0.0	0.7	41.5	34.3	41.5	7.1	24.3	12.1	0.0	
80+	55	44.0	39.2	13.8	0.0	1.1	0.0	0.0	0.0	5.0	0.0	0.0	0.0	
Missing	0													
Total	5,131	41.5	58.8	1.5	0.0	1.7	28.4	5.8	1.4	7.2	21.9	2.7		

M = % Missing of % Covered SE= Standard Error of % Covered

Indicators:

Oral Health:

"Need" = % of all respondents indicating any problems in the last 12 months with their mouth and/or teeth.

"Coverage" = % of respondents reporting problems with their mouth and teeth who indicated receiving dental or medical care in last 12 months.

Road Traffic Accident:

"Need" = % of all respondents indicating having suffered bodily injury from a road traffic accident in last 12 months.

"Coverage" = % of respondents reporting having suffered bodily injury from a road traffic accident in last 12 months who indicating having received treatment for their injuries on-site or at health facility within 1 hour of accident .

Injuries from Non-traffic Accidents:

"Need" = % of all respondents indicating having suffered bodily injury due to non-traffic accidents in last 12 months.

"Coverage" = % of respondents reporting having suffered bodily injury due to non-traffic accidents in last 12 months who indicating having received treatment for injuries on-site or at health facility within 1 hour of accident

5.11 Self Reported Non-Communicable Conditions

	Total	Angina				Osteo-Arthritis				Asthma				Diabetes			
		Need	Coverage	SE	M	Need	Coverage	SE	M	Need	Coverage	SE	M	Need	Coverage	SE	M
Sex																	
Female	2,586	7.4	33.5	3.9	0.1	4.9	28.5	4.3	0.0	7.0	19.2	3.7	0.0	6.0	56.4	4.6	0.2
Male	2,545	3.4	26.3	5.5	0.0	2.6	34.9	7.3	0.0	4.8	13.1	3.6	0.0	2.3	62.1	7.4	0.0
Missing	0																
Residence																	
Urban	2,906	5.6	35.0	4.7	0.0	3.8	34.8	5.3	0.0	7.6	15.4	3.3	0.0	4.8	58.8	5.1	0.0
Rural	2,225	5.1	26.0	3.5	0.2	3.8	25.3	4.6	0.0	3.7	20.3	4.4	0.0	3.4	56.4	5.8	0.4
Missing	0																
Income_Quintile																	
Q1(poorest)	711	4.8	19.0	5.7	0.0	2.7	21.5	8.9	0.0	2.6	16.3	9.8	0.0	2.1	48.9	14.0	0.0
Q2	877	5.1	17.1	4.8	0.0	3.1	22.6	9.7	0.0	4.5	13.4	4.4	0.0	2.7	42.2	9.2	0.0
Q3	933	5.9	27.9	6.3	0.5	3.2	22.8	7.3	0.0	5.7	14.4	5.5	0.0	4.6	52.2	8.7	0.0
Q4	1,137	6.2	35.9	6.7	0.0	4.6	34.6	7.6	0.0	5.6	28.9	8.6	0.0	4.9	58.1	7.8	0.6
Q5(richest)	1,442	4.8	44.4	7.1	0.0	4.4	38.2	7.8	0.0	8.8	12.1	3.4	0.0	5.1	68.5	7.0	0.0
Missing	31																
Age																	
18-29	1,986	2.7	14.4	5.9	0.0	0.8	34.8	15.6	0.0	6.5	9.3	3.0	0.0	1.2	18.4	10.0	0.0
30-44	1,676	4.6	20.0	4.5	0.0	2.7	28.0	7.9	0.0	5.5	20.9	4.8	0.0	2.2	36.0	8.9	0.0
45-59	951	9.8	39.6	6.0	0.0	6.9	24.6	6.4	0.0	5.4	23.5	7.5	0.0	7.7	60.3	6.5	0.0
60-69	311	8.0	49.3	9.2	0.0	12.6	42.1	8.6	0.0	5.1	24.7	9.7	0.0	11.9	83.9	5.3	0.8
70-79	152	12.4	45.9	9.9	0.0	16.0	29.7	10.0	0.0	6.9	32.7	13.2	0.0	19.9	61.4	8.5	0.0
80+	55	15.4	61.0	17.1	3.1	6.6	36.0	21.8	0.0	6.7	0.0	0.0	0.0	23.0	96.2	3.0	0.0
Missing	0																
Total	5,131	5.4	31.3	3.1	0.1	3.8	30.6	3.6	0.0	5.9	16.7	2.7	0.0	4.2	58.0	3.8	0.1

M = % Missing for Covered

SE= Standard Error of %Covered

Self Reported Non-Communicable Conditions Indicators:

"Need" = % of total respondents indicating having received a diagnosis of the condition (angina, arthritis, asthma, diabetes) in last 12 months.

"Coverage" = % of respondents with a self-reported condition (angina, arthritis, asthma, diabetes) indicating they have received treatment or screening for the condition in the last 2 weeks.

5.12 Mental Health Conditions

	Total	Depression				Schizophrenia			
		Need	Coverage	SE	M	Need	Coverage	SE	M
Sex									
Female	2,586	10.0	25.4	3.2	0.0	0.6	28.7	11.8	0.0
Male	2,545	3.2	33.2	7.4	0.0	0.4	24.9	15.7	0.0
Missing	0								
Residence									
Urban	2,906	8.7	28.9	3.9	0.0	0.4	32.2	14.0	0.0
Rural	2,225	4.0	22.8	4.2	0.0	0.6	22.4	12.7	0.0
Missing	0								
Income Quintile									
Q1(poorest)	711	2.4	27.3	9.8	0.0	0.2	0.0	0.0	0.0
Q2	877	3.6	22.3	7.2	0.0	0.3	60.4	26.1	0.0
Q3	933	6.5	28.2	6.4	0.0	0.9	9.4	9.4	0.0
Q4	1,137	7.9	30.4	5.8	0.0	0.6	44.7	21.6	0.0
Q5(richest)	1,442	9.7	25.1	5.0	0.0	0.4	28.9	20.8	0.0
Missing	31								
Age									
18-29	1,986	4.5	13.6	4.5	0.0	0.4	5.8	5.9	0.0
30-44	1,676	7.4	27.5	5.5	0.0	0.6	36.5	16.7	0.0
45-59	951	9.9	35.0	5.8	0.0	0.7	42.1	22.3	0.0
60-69	311	7.2	30.6	8.9	0.0	0.3	0.0	0.0	0.0
70-79	152	7.6	64.0	13.5	0.0	0.3	0.0	0.0	0.0
80+	55	1.2	0.0	0.0	0.0	0.0	0.0	0.0	
Missing	0								
Total	5,131	6.7	27.3	3.1	0.0	0.5	27.3		0.0

M = % Missing for Covered

SE= Standard Error of %Covered

Mental Health Conditions Indicators:

"Need" = % of total respondents indicating having received a diagnosis of the condition (depression, schizophrenia) in last 12 months.

"Coverage" = % of respondents with a self-reported condition (depression, schizophrenia) indicating they have received treatment or screening for the condition in the last 2 weeks.

5.13 Cataracts

		Cataracts			
	Total 60+	Need	Coverage	SE	M
Sex					
Female	288	16.8	24.3	7.0	0.0
Male	231	12.7	33.9	9.5	0.0
Missing	0				
Residence					
Urban	310	20.6	30.2	6.7	0.0
Rural	208	6.7	17.5	9.0	0.0
Missing	0				
Income_Quintile					
Q1(poorest)	68	6.5	25.7	14.5	0.0
Q2	84	7.3	3.8	4.1	0.0
Q3	113	11.1	30.0	13.2	0.0
Q4	112	16.9	29.2	10.1	0.0
Q5(richest)	141	25.4	30.9	9.7	0.0
Missing	1				
Age					
60-69	311	9.4	25.0	9.0	0.0
70-79	152	16.5	19.5	6.8	0.0
80+	55	42.2	40.8	12.5	0.0
Missing	0				
Total	519	15.0	27.9	5.7	0.0

M = % Missing of Covered SE= Standard Error of %Covered

Cataracts Indicators:

Total = Number of respondents 60 years of age or more.

"Need" = % in need (respondents 60 years of age or more with self-reported diagnosis of cataracts in the last 5 years).

"Coverage" = % respondents 60 years of age or more with self-reported diagnosis of cataracts having indicated receiving eye surgery to remove cataracts in the last 5 years)

6.01 In general, rate your health today - q2000

	Very Good	SE	Good	SE	Moderate	SE	Bad	SE	Very Bad	SE	Missing	SE	N
Gender													
Male	39.1	1.2	39.2	1.3	19.9	1.0	1.6	0.3	0.2	0.1	0.0	0.0	2,545
Female	30.2	1.1	39.1	1.1	27.2	1.0	3.1	0.4	0.3	0.1	0.1	0.0	2,586
M	0.0	0.0	0.0	0.0	0.0	0.0	0.0	0.0	0.0	0.0	0.0	0.0	
Residence													
Urban	35.6	1.2	41.8	1.3	20.4	1.0	2.0	0.3	0.1	0.0	0.1	0.0	2,906
Rural	33.4	1.1	35.7	1.1	27.8	1.1	2.7	0.4	0.4	0.2	0.0	0.0	2,225
M	0.0	0.0	0.0	0.0	0.0	0.0	0.0	0.0	0.0	0.0	0.0	0.0	
Income													
Q1(poorest)	35.4	1.8	31.4	1.8	29.4	1.8	3.3	0.6	0.6	0.3	0.0	0.0	711
Q2	33.5	1.8	35.9	1.9	28.6	1.6	1.6	0.4	0.4	0.2	0.0	0.0	877
Q3	33.8	1.7	38.5	1.8	24.8	1.6	2.7	0.7	0.2	0.1	0.0	0.0	933
Q4	33.5	1.8	39.1	1.7	23.8	1.5	3.2	0.6	0.3	0.2	0.1	0.1	1,137
Q5(richest)	36.7	2.0	45.2	1.9	16.8	1.2	1.2	0.4	0.0	0.0	0.0	0.0	1,442
M	20.0	7.0	47.8	10.7	27.1	8.8	5.1	2.7	0.0	0.0	0.0	0.0	31
Age													
18-29	40.7	1.4	42.6	1.4	15.3	1.0	1.2	0.3	0.2	0.2	0.0	0.0	1,986
30-44	35.3	1.5	39.1	1.6	22.6	1.2	2.7	0.5	0.3	0.1	0.0	0.0	1,676
45-59	27.4	1.8	35.5	1.7	33.7	1.7	3.3	0.6	0.1	0.1	0.0	0.0	951
60-69	23.2	2.4	33.8	2.8	39.1	3.1	3.7	1.0	0.1	0.1	0.1	0.1	311
70-79	22.5	3.1	31.1	3.5	41.6	3.8	3.0	1.2	1.1	0.6	0.6	0.6	152
80+	19.4	6.9	33.5	6.6	42.8	7.6	3.7	2.0	0.6	0.6	0.0	0.0	55
M	0.0	0.0	0.0	0.0	0.0	0.0	0.0	0.0	0.0	0.0	0.0	0.0	
All	34.6	0.8	39.1	0.9	23.6	0.7	2.3	0.2	0.3	0.1	0.0	0.0	5,131

6.02 Difficulty with 'work and household activities' in last 30 days - q2001

	None	SE	Mild	SE	Moderate	SE	Sever	SE	Extreme/ Cannot do	SE	Missing	SE	N
Gender													
Male	77.0	1.0	9.3	0.8	11.1	0.8	2.3	0.4	0.3	0.1	0.0	0.0	2,545
Female	69.4	1.0	11.5	0.7	14.6	0.8	3.5	0.4	0.9	0.2	0.1	0.1	2,586
M	0.0	0.0	0.0	0.0	0.0	0.0	0.0	0.0	0.0	0.0	0.0	0.0	
Residence													
Urban	75.1	1.0	10.0	0.7	11.2	0.7	3.0	0.4	0.6	0.2	0.1	0.0	2,906
Rural	70.5	1.2	11.0	0.8	15.1	0.8	2.8	0.4	0.6	0.1	0.1	0.0	2,225
M	0.0	0.0	0.0	0.0	0.0	0.0	0.0	0.0	0.0	0.0	0.0	0.0	
Income													
Q1(poorest)	70.1	1.8	11.2	1.4	14.5	1.3	3.0	0.5	1.1	0.4	0.1	0.1	711
Q2	70.6	1.9	10.3	1.2	16.0	1.4	2.7	0.7	0.4	0.2	0.0	0.0	877
Q3	71.3	1.7	10.1	1.2	14.3	1.2	3.6	0.7	0.5	0.2	0.1	0.1	933
Q4	71.9	1.6	10.6	1.1	12.9	1.1	3.7	0.7	0.6	0.2	0.1	0.1	1,137
Q5(richest)	78.6	1.4	9.9	1.0	9.1	1.0	1.8	0.4	0.5	0.3	0.0	0.0	1,442
M	56.9	10.7	20.1	10.6	15.9	6.6	7.1	5.7	0.0	0.0	0.0	0.0	31
Age													
18-29	79.9	1.1	9.5	0.8	9.2	0.8	1.3	0.3	0.1	0.1	0.0	0.0	1,986
30-44	72.1	1.3	11.6	0.9	12.6	0.9	3.3	0.6	0.4	0.1	0.0	0.0	1,676
45-59	68.7	1.6	9.3	1.0	18.3	1.3	3.2	0.6	0.6	0.2	0.0	0.0	951
60-69	64.3	3.0	11.1	2.0	18.9	2.6	3.8	1.0	1.8	0.8	0.0	0.0	311
70-79	53.1	3.8	16.8	2.8	15.7	2.6	10.5	2.5	3.3	1.3	0.6	0.6	152
80+	45.7	7.8	6.4	2.6	16.3	4.7	19.8	6.9	10.1	5.8	1.8	1.8	55
M	0.0	0.0	0.0	0.0	0.0	0.0	0.0	0.0	0.0	0.0	0.0	0.0	
All	73.1	0.8	10.4	0.5	12.9	0.5	2.9	0.3	0.6	0.1	0.1	0.0	5,131

6.03 Difficulty with 'moving around' in last 30 days - q2010

	None	SE	Mild	SE	Moderate	SE	Sever	SE	Extreme/ Cannot do	SE	Missing	SE	N
Gender													
Male	87.6	0.8	4.8	0.5	6.4	0.6	1.2	0.2	0.1	0.1	0.0	0.0	2,545
Female	79.7	0.9	8.7	0.6	8.3	0.6	2.6	0.4	0.6	0.2	0.1	0.0	2,586
M	0.0	0.0	0.0	0.0	0.0	0.0	0.0	0.0	0.0	0.0	0.0	0.0	
Residence													
Urban	84.6	0.8	6.2	0.5	6.9	0.6	1.9	0.3	0.3	0.1	0.1	0.0	2,906
Rural	82.3	0.9	7.4	0.6	8.0	0.6	1.9	0.3	0.4	0.1	0.0	0.0	2,225
M	0.0	0.0	0.0	0.0	0.0	0.0	0.0	0.0	0.0	0.0	0.0	0.0	
Income													
Q1(poorest)	82.6	1.3	7.1	0.9	7.5	1.0	2.2	0.4	0.5	0.3	0.0	0.0	711
Q2	84.0	1.4	6.7	0.9	7.4	1.0	1.6	0.5	0.3	0.2	0.0	0.0	877
Q3	82.4	1.4	6.5	0.9	8.2	1.0	2.5	0.5	0.3	0.2	0.0	0.0	933
Q4	81.4	1.4	7.1	0.9	9.4	1.0	1.5	0.4	0.6	0.2	0.1	0.1	1,137
Q5(richest)	86.6	1.2	6.4	0.8	5.2	0.8	1.7	0.5	0.1	0.1	0.0	0.0	1,442
M	75.3	8.5	11.8	7.3	2.7	1.9	10.2	6.1	0.0	0.0	0.0	0.0	31
Age													
18-29	88.4	0.9	6.2	0.7	4.5	0.6	0.7	0.2	0.1	0.1	0.0	0.0	1,986
30-44	86.2	1.0	5.9	0.7	6.5	0.8	1.3	0.3	0.2	0.1	0.0	0.0	1,676
45-59	78.9	1.5	6.7	0.8	11.4	1.1	2.6	0.6	0.3	0.2	0.0	0.0	951
60-69	69.3	2.9	10.4	2.2	12.3	1.9	5.5	1.5	2.4	0.9	0.0	0.0	311
70-79	60.7	3.8	14.0	2.5	16.5	2.8	7.3	2.0	1.0	0.7	0.6	0.6	152
80+	56.1	7.6	11.1	3.7	12.3	3.5	17.6	6.9	3.0	2.1	0.0	0.0	55
M	0.0	0.0	0.0	0.0	0.0	0.0	0.0	0.0	0.0	0.0	0.0	0.0	
All	83.6	0.6	6.7	0.4	7.4	0.4	1.9	0.2	0.3	0.1	0.0	0.0	5,131

6.04 Difficulty with 'vigorous activities' in last 30 days - q2011

	None	SE	Mild	SE	Moderate	SE	Sever	SE	Extreme/ Cannot do	SE	Missing	SE	N
Gender													
Male	71.9	1.2	6.6	0.7	10.0	0.7	5.1	0.5	5.7	0.5	0.7	0.3	2,545
Female	48.2	1.2	9.5	0.7	11.2	0.7	12.2	0.7	17.4	0.9	1.5	0.3	2,586
M	0.0	0.0	0.0	0.0	0.0	0.0	0.0	0.0	0.0	0.0	0.0	0.0	
Residence													
Urban	59.3	1.3	8.1	0.7	10.2	0.7	8.7	0.7	12.2	0.8	1.5	0.3	2,906
Rural	60.8	1.1	8.1	0.6	11.1	0.7	8.6	0.6	10.9	0.7	0.6	0.2	2,225
M	0.0	0.0	0.0	0.0	0.0	0.0	0.0	0.0	0.0	0.0	0.0	0.0	
Income													
Q1(poorest)	60.7	1.9	6.6	0.9	12.2	1.1	8.2	1.0	11.7	1.1	0.5	0.2	711
Q2	62.4	1.7	7.9	1.1	10.4	1.1	8.5	1.0	10.6	1.1	0.2	0.2	877
Q3	61.3	1.8	6.4	0.9	11.0	1.1	9.2	1.0	11.5	1.1	0.6	0.3	933
Q4	58.3	1.9	8.1	1.0	9.7	1.0	8.9	1.0	13.3	1.3	1.6	0.4	1,137
Q5(richest)	58.5	1.9	10.0	1.2	10.0	1.0	8.6	1.0	11.1	1.2	1.8	0.6	1,442
M	56.0	10.8	6.9	3.9	25.2	11.2	1.3	1.3	5.7	3.0	4.8	4.7	31
Age													
18-29	72.5	1.3	8.7	0.8	8.9	0.8	4.6	0.6	4.4	0.6	0.8	0.3	1,986
30-44	63.2	1.5	9.1	0.9	10.4	0.9	8.0	0.8	8.1	0.8	1.2	0.4	1,676
45-59	47.5	1.9	6.7	0.9	14.8	1.3	11.6	1.1	18.4	1.5	1.0	0.3	951
60-69	27.6	2.5	6.3	1.4	11.4	1.8	21.6	2.7	32.1	3.0	1.1	0.7	311
70-79	21.0	3.3	3.1	1.1	6.6	1.7	20.7	3.3	44.3	4.0	4.2	1.8	152
80+	13.7	5.9	0.3	0.3	11.7	4.8	15.7	5.2	57.1	7.6	1.5	1.1	55
M	0.0	0.0	0.0	0.0	0.0	0.0	0.0	0.0	0.0	0.0	0.0	0.0	
All	60.0	0.9	8.1	0.5	10.6	0.5	8.7	0.5	11.6	0.6	1.1	0.2	5,131

6.05 Difficulty with 'self-care' in last 30 days - q2020

	None	SE	Mild	SE	Moderate	SE	Sever	SE	Extreme/ Cannot do	SE	Missing	SE	N
Gender													
Male	96.9	0.4	1.5	0.2	1.2	0.2	0.4	0.1	0.0	0.0	0.0	0.0	2,545
Female	95.3	0.5	1.8	0.3	2.0	0.3	0.6	0.2	0.2	0.1	0.1	0.0	2,586
M	0.0	0.0	0.0	0.0	0.0	0.0	0.0	0.0	0.0	0.0	0.0	0.0	
Residence													
Urban	96.7	0.4	1.3	0.2	1.5	0.3	0.3	0.1	0.1	0.1	0.1	0.0	2,906
Rural	95.3	0.5	2.2	0.3	1.7	0.3	0.7	0.2	0.2	0.1	0.0	0.0	2,225
M	0.0	0.0	0.0	0.0	0.0	0.0	0.0	0.0	0.0	0.0	0.0	0.0	
Income													
Q1(poorest)	94.1	0.8	2.9	0.6	2.0	0.4	0.9	0.3	0.1	0.1	0.0	0.0	711
Q2	95.0	0.8	2.0	0.5	2.4	0.6	0.6	0.2	0.1	0.1	0.0	0.0	877
Q3	95.9	0.7	2.0	0.4	1.5	0.6	0.4	0.2	0.3	0.2	0.0	0.0	933
Q4	95.9	0.7	1.3	0.4	1.6	0.5	0.8	0.3	0.3	0.2	0.1	0.1	1,137
Q5(richest)	97.9	0.5	1.0	0.3	0.9	0.4	0.1	0.1	0.0	0.0	0.0	0.0	1,442
M	97.3	2.7	2.7	2.7	0.0	0.0	0.0	0.0	0.0	0.0	0.0	0.0	31
Age													
18-29	97.6	0.4	1.2	0.3	0.8	0.2	0.3	0.1	0.0	0.0	0.0	0.0	1,986
30-44	96.7	0.5	1.3	0.3	1.5	0.4	0.5	0.2	0.0	0.0	0.0	0.0	1,676
45-59	94.3	0.9	2.7	0.6	2.4	0.6	0.4	0.2	0.1	0.1	0.0	0.0	951
60-69	91.9	1.5	3.8	1.0	1.9	0.6	1.3	0.6	1.1	0.7	0.0	0.0	311
70-79	93.4	1.9	0.7	0.5	3.3	1.6	1.8	0.8	0.3	0.3	0.6	0.6	152
80+	83.9	5.5	3.4	1.8	10.9	5.0	0.0	0.0	1.8	1.8	0.0	0.0	55
M	0.0	0.0	0.0	0.0	0.0	0.0	0.0	0.0	0.0	0.0	0.0	0.0	
All	96.1	0.3	1.7	0.2	1.6	0.2	0.5	0.1	0.1	0.0	0.0	0.0	5,131

6.06 Difficulty with 'taking care of and maintaining general appearance' in last 30 days - q2021

	None	SE	Mild	SE	Moderate	SE	Sever	SE	Extreme/ Cannot do	SE	Missing	SE	N
Gender													
Male	97.0	0.4	1.5	0.3	1.3	0.3	0.2	0.1	0.0	0.0	0.0	0.0	2,545
Female	95.6	0.4	2.0	0.3	1.6	0.3	0.6	0.2	0.2	0.1	0.1	0.0	2,586
M	0.0	0.0	0.0	0.0	0.0	0.0	0.0	0.0	0.0	0.0	0.0	0.0	
Residence													
Urban	96.9	0.4	1.5	0.3	1.3	0.3	0.2	0.1	0.1	0.1	0.1	0.0	2,906
Rural	95.5	0.4	2.0	0.3	1.6	0.3	0.7	0.2	0.2	0.1	0.0	0.0	2,225
M	0.0	0.0	0.0	0.0	0.0	0.0	0.0	0.0	0.0	0.0	0.0	0.0	
Income													
Q1(poorest)	94.6	0.7	2.4	0.5	2.1	0.5	0.8	0.3	0.1	0.1	0.0	0.0	711
Q2	94.9	0.9	2.0	0.6	2.5	0.7	0.6	0.2	0.1	0.1	0.0	0.0	877
Q3	96.7	0.6	1.7	0.4	1.1	0.4	0.3	0.2	0.3	0.2	0.0	0.0	933
Q4	96.5	0.7	1.3	0.4	1.4	0.5	0.5	0.2	0.2	0.2	0.1	0.1	1,137
Q5(richest)	97.8	0.5	1.4	0.4	0.7	0.3	0.1	0.0	0.0	0.0	0.0	0.0	1,442
M	89.4	7.3	10.6	7.3	0.0	0.0	0.0	0.0	0.0	0.0	0.0	0.0	31
Age													
18-29	97.4	0.4	1.3	0.3	0.9	0.3	0.2	0.1	0.0	0.0	0.0	0.0	1,986
30-44	97.0	0.5	1.4	0.3	1.3	0.4	0.3	0.1	0.0	0.0	0.0	0.0	1,676
45-59	94.9	0.8	2.4	0.6	2.1	0.6	0.4	0.2	0.1	0.1	0.0	0.0	951
60-69	92.6	1.4	3.5	0.9	2.0	0.8	0.9	0.4	1.1	0.7	0.0	0.0	311
70-79	94.0	1.6	1.0	0.6	2.3	1.2	1.8	0.8	0.3	0.3	0.6	0.6	152
80+	86.1	5.2	5.0	2.2	5.4	4.3	1.8	1.8	1.8	1.8	0.0	0.0	55
M	0.0	0.0	0.0	0.0	0.0	0.0	0.0	0.0	0.0	0.0	0.0	0.0	
All	96.3	0.3	1.7	0.2	1.4	0.2	0.4	0.1	0.1	0.0	0.0	0.0	5,131

6.07 Amount of 'bodily aches or pains' in last 30 days - q2030

	None	SE	Mild	SE	Moderate	SE	Sever	SE	Extreme/ Cannot do	SE	Missing	SE	N
Gender													
Male	55.6	1.3	23.0	1.1	16.4	0.9	4.7	0.5	0.3	0.1	0.0	0.0	2,545
Female	35.8	1.1	28.8	1.0	23.0	0.9	11.5	0.7	0.9	0.2	0.1	0.0	2,586
M	0.0	0.0	0.0	0.0	0.0	0.0	0.0	0.0	0.0	0.0	0.0	0.0	
Residence													
Urban	46.1	1.2	27.5	1.1	17.9	0.9	7.9	0.6	0.6	0.2	0.1	0.0	2,906
Rural	45.0	1.2	24.0	1.0	22.1	1.0	8.4	0.6	0.5	0.2	0.0	0.0	2,225
M	0.0	0.0	0.0	0.0	0.0	0.0	0.0	0.0	0.0	0.0	0.0	0.0	
Income													
Q1(poorest)	48.2	1.9	18.9	1.6	21.5	1.5	10.9	1.2	0.4	0.2	0.1	0.1	711
Q2	46.4	2.0	21.8	1.6	23.8	1.5	7.5	0.9	0.5	0.2	0.0	0.0	877
Q3	45.1	1.8	24.9	1.6	21.4	1.5	7.9	0.9	0.7	0.3	0.0	0.0	933
Q4	44.2	1.9	26.4	1.5	19.3	1.5	9.0	1.0	0.9	0.3	0.1	0.1	1,137
Q5(richest)	45.5	1.9	32.2	1.7	15.3	1.3	6.5	0.8	0.4	0.2	0.0	0.0	1,442
M	37.0	9.8	26.7	7.8	25.8	8.6	10.5	6.2	0.0	0.0	0.0	0.0	31
Age													
18-29	50.4	1.4	26.8	1.3	17.5	1.1	4.5	0.6	0.7	0.2	0.1	0.0	1,986
30-44	46.1	1.5	27.0	1.3	19.0	1.1	7.6	0.7	0.2	0.1	0.0	0.0	1,676
45-59	40.7	1.9	23.0	1.4	23.1	1.6	12.7	1.2	0.5	0.2	0.0	0.0	951
60-69	36.4	2.8	27.5	2.8	20.8	2.6	13.8	2.5	1.5	0.7	0.0	0.0	311
70-79	34.5	3.7	20.0	3.0	30.2	3.5	14.5	2.8	0.2	0.2	0.6	0.6	152
80+	25.3	5.7	20.3	6.8	24.5	6.4	24.5	7.3	5.4	3.1	0.0	0.0	55
M	0.0	0.0	0.0	0.0	0.0	0.0	0.0	0.0	0.0	0.0	0.0	0.0	
All	45.6	0.9	25.9	0.8	19.7	0.7	8.1	0.4	0.6	0.1	0.1	0.0	5,131

6.08 Amount of 'bodily discomfort' in last 30 days - q2031

	None	SE	Mild	SE	Moderate	SE	Sever	SE	Extreme/ Cannot do	SE	Missing	SE	N
Gender													
Male	60.5	1.2	20.6	1.0	14.7	0.9	4.1	0.4	0.1	0.0	0.0	0.0	2,545
Female	43.7	1.1	25.8	1.0	21.1	1.0	8.6	0.6	0.6	0.2	0.1	0.0	2,586
M	0.0	0.0	0.0	0.0	0.0	0.0	0.0	0.0	0.0	0.0	0.0	0.0	
Residence													
Urban	53.9	1.2	23.7	1.0	16.3	0.9	5.8	0.5	0.2	0.1	0.1	0.0	2,906
Rural	49.7	1.2	22.7	1.0	20.0	0.9	7.1	0.6	0.5	0.1	0.0	0.0	2,225
M	0.0	0.0	0.0	0.0	0.0	0.0	0.0	0.0	0.0	0.0	0.0	0.0	
Income													
Q1(poorest)	54.3	1.8	18.3	1.4	18.5	1.5	8.6	1.0	0.3	0.1	0.0	0.0	711
Q2	50.1	2.0	21.2	1.6	20.8	1.5	7.5	1.0	0.4	0.2	0.0	0.0	877
Q3	50.8	2.0	22.4	1.6	20.7	1.5	5.7	0.7	0.4	0.2	0.0	0.0	933
Q4	50.0	2.1	24.4	1.7	17.6	1.4	7.3	0.9	0.6	0.2	0.1	0.1	1,137
Q5(richest)	54.8	1.6	26.7	1.5	14.2	1.3	4.2	0.6	0.0	0.0	0.0	0.0	1,442
M	45.8	10.4	18.9	6.8	24.8	8.3	10.5	6.2	0.0	0.0	0.0	0.0	31
Age													
18-29	56.9	1.5	24.5	1.3	15.2	1.0	3.3	0.4	0.1	0.1	0.0	0.0	1,986
30-44	52.4	1.4	24.1	1.2	16.8	1.0	6.5	0.7	0.2	0.1	0.0	0.0	1,676
45-59	46.7	1.9	21.0	1.4	21.6	1.6	10.3	1.1	0.3	0.2	0.0	0.0	951
60-69	43.7	3.0	22.1	2.5	23.7	3.0	9.1	1.6	1.4	0.6	0.0	0.0	311
70-79	41.8	3.9	16.7	2.9	29.2	3.5	11.5	2.4	0.2	0.2	0.6	0.6	152
80+	36.9	7.6	18.6	6.0	24.0	6.6	14.1	5.2	6.4	3.2	0.0	0.0	55
M	0.0	0.0	0.0	0.0	0.0	0.0	0.0	0.0	0.0	0.0	0.0	0.0	
All	52.1	0.8	23.2	0.7	17.9	0.7	6.4	0.4	0.3	0.1	0.0	0.0	5,131

6.09 Difficulty with 'concentrating or remembering things' in last 30 days - q2050

	None	SE	Mild	SE	Moderate	SE	Sever	SE	Extreme/ Cannot do	SE	Missing	SE	N
Gender													
Male	77.1	1.1	12.1	0.9	8.5	0.7	2.2	0.4	0.1	0.1	0.0	0.0	2,545
Female	63.1	1.1	17.4	0.9	13.6	0.7	5.5	0.5	0.4	0.2	0.1	0.0	2,586
M	0.0	0.0	0.0	0.0	0.0	0.0	0.0	0.0	0.0	0.0	0.0	0.0	
Residence													
Urban	69.8	1.1	15.8	0.9	10.2	0.7	3.9	0.5	0.2	0.1	0.1	0.0	2,906
Rural	70.4	1.0	13.4	0.8	12.3	0.7	3.7	0.4	0.2	0.1	0.0	0.0	2,225
M	0.0	0.0	0.0	0.0	0.0	0.0	0.0	0.0	0.0	0.0	0.0	0.0	
Income													
Q1(poorest)	73.3	1.6	11.3	1.1	10.8	1.1	4.3	0.7	0.2	0.2	0.1	0.1	711
Q2	71.6	1.6	13.2	1.2	12.3	1.2	2.8	0.5	0.1	0.1	0.0	0.0	877
Q3	71.7	1.6	12.2	1.2	12.7	1.2	3.1	0.5	0.3	0.2	0.0	0.0	933
Q4	70.0	1.7	15.1	1.4	10.1	1.0	4.4	0.7	0.2	0.2	0.1	0.1	1,137
Q5(richest)	66.6	1.7	19.0	1.4	9.9	1.1	4.2	0.7	0.2	0.2	0.0	0.0	1,442
M	63.0	8.8	8.9	5.1	24.4	8.2	3.7	2.8	0.0	0.0	0.0	0.0	31
Age													
18-29	75.7	1.2	15.2	1.0	7.2	0.7	1.6	0.3	0.3	0.2	0.0	0.0	1,986
30-44	72.8	1.2	13.6	1.0	10.3	0.8	3.1	0.5	0.2	0.1	0.0	0.0	1,676
45-59	61.1	1.7	17.2	1.4	15.1	1.2	6.5	1.0	0.1	0.1	0.0	0.0	951
60-69	61.7	2.9	13.4	2.0	17.4	2.2	7.2	1.7	0.4	0.4	0.0	0.0	311
70-79	47.3	3.6	13.1	2.4	25.1	3.5	13.7	2.8	0.3	0.3	0.6	0.6	152
80+	48.8	7.7	6.7	2.8	29.2	7.4	14.1	6.0	0.5	0.5	0.8	0.8	55
M	0.0	0.0	0.0	0.0	0.0	0.0	0.0	0.0	0.0	0.0	0.0	0.0	
All	70.1	0.8	14.8	0.6	11.1	0.5	3.8	0.3	0.2	0.1	0.0	0.0	5,131

6.10 Difficulty with 'learning a new task' in last 30 days - q2051

	None	SE	Mild	SE	Moderate	SE	Sever	SE	Extreme/ Cannot do	SE	Missing	SE	N
Gender													
Male	82.7	1.0	8.8	0.7	6.8	0.6	1.7	0.3	0.1	0.0	0.0	0.0	2,545
Female	75.1	1.0	11.4	0.7	9.3	0.6	3.5	0.4	0.6	0.2	0.1	0.0	2,586
M	0.0	0.0	0.0	0.0	0.0	0.0	0.0	0.0	0.0	0.0	0.0	0.0	
Residence													
Urban	80.4	1.0	9.9	0.7	7.1	0.6	2.3	0.4	0.3	0.1	0.1	0.0	2,906
Rural	76.8	0.9	10.4	0.8	9.4	0.6	3.0	0.4	0.4	0.1	0.0	0.0	2,225
M	0.0	0.0	0.0	0.0	0.0	0.0	0.0	0.0	0.0	0.0	0.0	0.0	
Income													
Q1(poorest)	77.4	1.6	8.8	1.1	10.1	1.3	3.0	0.6	0.6	0.3	0.1	0.1	711
Q2	77.5	1.6	10.4	1.2	9.7	1.0	2.2	0.4	0.2	0.1	0.0	0.0	877
Q3	77.4	1.5	10.3	1.1	9.5	1.0	2.6	0.5	0.3	0.1	0.0	0.0	933
Q4	79.2	1.4	10.3	1.2	7.2	0.8	3.1	0.6	0.1	0.1	0.1	0.1	1,137
Q5(richest)	81.1	1.4	10.4	1.1	5.8	0.9	2.1	0.5	0.5	0.3	0.0	0.0	1,442
M	77.5	7.6	7.4	3.7	6.8	5.3	8.3	5.8	0.0	0.0	0.0	0.0	31
Age													
18-29	82.3	1.1	10.6	0.9	5.7	0.7	1.2	0.3	0.1	0.1	0.0	0.0	1,986
30-44	81.5	1.1	9.4	0.8	7.0	0.8	2.0	0.4	0.1	0.1	0.0	0.0	1,676
45-59	75.4	1.6	9.6	1.1	10.8	1.1	3.9	0.7	0.2	0.2	0.0	0.0	951
60-69	71.6	2.8	11.0	1.8	10.7	1.8	5.3	1.4	1.4	0.7	0.0	0.0	311
70-79	53.3	3.7	13.9	2.4	21.0	3.2	11.0	2.5	0.3	0.3	0.6	0.6	152
80+	46.3	7.7	8.1	3.2	25.5	6.9	9.9	3.9	9.4	5.7	0.8	0.8	55
M	0.0	0.0	0.0	0.0	0.0	0.0	0.0	0.0	0.0	0.0	0.0	0.0	
All	78.9	0.7	10.1	0.5	8.1	0.4	2.6	0.3	0.3	0.1	0.0	0.0	5,131

6.11 Difficulty with 'personal relationships or participation in the community' in last 30 days - q2060

	None	SE	Mild	SE	Moderate	SE	Sever	SE	Extreme/ Cannot do	SE	Missing	SE	N
Gender													
Male	91.3	0.8	4.1	0.6	3.9	0.5	0.6	0.2	0.1	0.1	0.0	0.0	2,545
Female	91.2	0.7	4.2	0.4	3.0	0.4	1.2	0.3	0.2	0.1	0.1	0.0	2,586
M	0.0	0.0	0.0	0.0	0.0	0.0	0.0	0.0	0.0	0.0	0.0	0.0	
Residence													
Urban	91.2	0.8	4.4	0.5	3.4	0.5	0.8	0.2	0.2	0.1	0.1	0.0	2,906
Rural	91.3	0.7	3.9	0.5	3.5	0.5	1.1	0.2	0.1	0.0	0.0	0.0	2,225
M	0.0	0.0	0.0	0.0	0.0	0.0	0.0	0.0	0.0	0.0	0.0	0.0	
Income													
Q1(poorest)	90.0	1.1	5.0	0.9	3.5	0.7	1.3	0.4	0.1	0.1	0.0	0.0	711
Q2	92.0	1.1	3.5	0.6	3.7	0.9	0.5	0.2	0.2	0.1	0.0	0.0	877
Q3	91.6	1.1	3.5	0.7	3.1	0.8	1.5	0.5	0.3	0.2	0.0	0.0	933
Q4	89.9	1.2	4.3	0.8	4.6	0.8	0.9	0.3	0.1	0.1	0.1	0.1	1,137
Q5(richest)	92.4	1.0	4.6	0.8	2.3	0.5	0.6	0.3	0.1	0.1	0.0	0.0	1,442
M	84.0	7.5	2.1	2.1	11.8	7.4	2.1	2.1	0.0	0.0	0.0	0.0	31
Age													
18-29	90.1	1.0	4.7	0.6	4.0	0.6	0.9	0.3	0.2	0.1	0.0	0.0	1,986
30-44	91.6	0.8	4.6	0.7	3.0	0.5	0.7	0.2	0.1	0.1	0.0	0.0	1,676
45-59	93.8	0.9	2.7	0.6	2.8	0.6	0.5	0.3	0.3	0.2	0.0	0.0	951
60-69	91.7	1.8	3.3	1.3	2.8	0.9	2.1	1.0	0.1	0.1	0.0	0.0	311
70-79	88.1	2.6	3.4	1.4	5.3	2.0	2.6	1.1	0.0	0.0	0.6	0.6	152
80+	83.7	5.4	3.0	2.3	6.3	4.4	5.1	2.7	1.9	1.3	0.0	0.0	55
M	0.0	0.0	0.0	0.0	0.0	0.0	0.0	0.0	0.0	0.0	0.0	0.0	
All	91.2	0.5	4.2	0.4	3.5	0.3	0.9	0.2	0.2	0.1	0.0	0.0	5,131

6.12 Difficulty with 'dealing with conflicts and tensions' in last 30 days - q2061

	None	SE	Mild	SE	Moderate	SE	Sever	SE	Extreme/ Cannot do	SE	Missing	SE	N
Gender													
Male	89.6	0.9	4.9	0.6	3.8	0.5	1.4	0.3	0.1	0.1	0.2	0.2	2,545
Female	87.9	0.8	6.1	0.6	3.7	0.4	2.2	0.4	0.1	0.1	0.1	0.0	2,586
M	0.0	0.0	0.0	0.0	0.0	0.0	0.0	0.0	0.0	0.0	0.0	0.0	
Residence													
Urban	86.5	0.9	6.7	0.6	4.4	0.5	2.1	0.4	0.2	0.1	0.2	0.2	2,906
Rural	91.6	0.7	4.0	0.5	2.9	0.4	1.4	0.3	0.1	0.0	0.0	0.0	2,225
M	0.0	0.0	0.0	0.0	0.0	0.0	0.0	0.0	0.0	0.0	0.0	0.0	
Income													
Q1(poorest)	91.6	1.0	4.5	0.8	2.4	0.6	1.4	0.5	0.2	0.1	0.0	0.0	711
Q2	91.3	1.1	4.8	0.8	2.5	0.6	1.3	0.4	0.1	0.1	0.0	0.0	877
Q3	89.6	1.2	4.9	0.8	3.4	0.7	2.0	0.5	0.0	0.0	0.0	0.0	933
Q4	87.7	1.2	5.2	0.8	5.1	0.8	1.7	0.4	0.2	0.2	0.1	0.1	1,137
Q5(richest)	86.1	1.4	7.0	1.0	4.3	0.7	2.3	0.6	0.1	0.1	0.3	0.3	1,442
M	83.0	8.0	8.2	5.2	7.8	7.1	0.9	1.0	0.0	0.0	0.0	0.0	31
Age													
18-29	86.2	1.0	7.0	0.7	4.2	0.6	2.4	0.5	0.1	0.1	0.0	0.0	1,986
30-44	90.2	0.9	4.2	0.6	3.8	0.6	1.5	0.3	0.0	0.0	0.3	0.3	1,676
45-59	91.1	1.1	5.0	0.8	2.8	0.6	1.0	0.4	0.2	0.1	0.0	0.0	951
60-69	91.4	1.8	3.9	1.4	3.3	1.1	1.5	0.7	0.0	0.0	0.0	0.0	311
70-79	87.0	2.6	6.7	1.8	3.4	1.7	1.6	0.9	0.8	0.8	0.6	0.6	152
80+	83.9	5.8	5.0	3.5	6.2	4.4	4.0	2.6	0.9	0.9	0.0	0.0	55
M	0.0	0.0	0.0	0.0	0.0	0.0	0.0	0.0	0.0	0.0	0.0	0.0	
All	88.7	0.6	5.5	0.4	3.7	0.4	1.8	0.2	0.1	0.0	0.1	0.1	5,131

6.13 Difficulty with 'seeing and recognizing a person you know across the road (20m)' in last 30 days - q2071

	None	SE	Mild	SE	Moderate	SE	Sever	SE	Extreme/ Cannot do	SE	Missing	SE	N
Gender													
Male	90.0	0.7	3.5	0.4	4.0	0.5	2.3	0.3	0.2	0.1	0.0	0.0	2,545
Female	82.0	0.8	6.0	0.5	6.8	0.5	4.3	0.4	0.9	0.2	0.1	0.0	2,586
M	0.0	0.0	0.0	0.0	0.0	0.0	0.0	0.0	0.0	0.0	0.0	0.0	
Residence													
Urban	86.3	0.8	5.1	0.5	4.8	0.5	3.0	0.4	0.7	0.2	0.1	0.0	2,906
Rural	85.5	0.8	4.3	0.4	6.2	0.5	3.6	0.4	0.3	0.1	0.0	0.0	2,225
M	0.0	0.0	0.0	0.0	0.0	0.0	0.0	0.0	0.0	0.0	0.0	0.0	
Income													
Q1(poorest)	85.0	1.3	3.5	0.6	6.0	0.9	4.9	0.7	0.6	0.2	0.0	0.0	711
Q2	86.2	1.2	4.4	0.8	6.1	0.8	3.2	0.6	0.2	0.1	0.0	0.0	877
Q3	85.5	1.3	3.8	0.6	5.8	0.9	3.7	0.6	1.2	0.4	0.0	0.0	933
Q4	86.0	1.2	4.6	0.7	6.0	0.9	2.7	0.6	0.5	0.2	0.1	0.1	1,137
Q5(richest)	86.8	1.3	6.4	0.9	3.7	0.6	2.7	0.6	0.4	0.2	0.0	0.0	1,442
M	76.4	8.6	2.8	2.2	18.7	8.4	2.1	2.1	0.0	0.0	0.0	0.0	31
Age													
18-29	92.2	0.8	3.4	0.5	2.9	0.5	1.3	0.4	0.2	0.2	0.0	0.0	1,986
30-44	91.9	0.8	3.7	0.5	3.3	0.5	0.9	0.2	0.1	0.1	0.0	0.0	1,676
45-59	77.4	1.6	6.8	1.0	9.1	1.0	5.7	0.8	1.0	0.4	0.0	0.0	951
60-69	67.0	2.8	10.3	1.8	12.8	1.9	9.1	1.7	0.8	0.5	0.0	0.0	311
70-79	47.8	3.6	10.8	2.4	19.9	3.2	18.8	3.1	2.3	1.2	0.6	0.6	152
80+	44.1	7.8	4.2	1.9	13.8	4.1	29.3	7.9	8.7	3.2	0.0	0.0	55
M	0.0	0.0	0.0	0.0	0.0	0.0	0.0	0.0	0.0	0.0	0.0	0.0	
All	86.0	0.6	4.8	0.4	5.4	0.4	3.3	0.3	0.5	0.1	0.0	0.0	5,131

6.14 Difficulty with 'seeing an object at arm's length or in reading' in last 30 days - q2072

	None	SE	Mild	SE	Moderate	SE	Sever	SE	Extreme/ Cannot do	SE	Missing	SE	N
Gender													
Male	81.4	1.0	8.7	0.7	6.3	0.5	3.2	0.4	0.4	0.1	0.0	0.0	2,545
Female	76.7	0.9	8.0	0.6	9.0	0.7	5.4	0.5	0.8	0.2	0.1	0.0	2,586
M	0.0	0.0	0.0	0.0	0.0	0.0	0.0	0.0	0.0	0.0	0.0	0.0	
Residence													
Urban	81.7	0.9	8.2	0.7	6.3	0.5	3.2	0.4	0.6	0.2	0.1	0.0	2,906
Rural	75.5	0.9	8.6	0.6	9.4	0.7	5.8	0.5	0.6	0.1	0.0	0.0	2,225
M	0.0	0.0	0.0	0.0	0.0	0.0	0.0	0.0	0.0	0.0	0.0	0.0	
Income													
Q1(poorest)	76.5	1.5	7.4	0.9	8.3	1.0	6.9	0.9	0.9	0.3	0.0	0.0	711
Q2	74.2	1.6	9.7	1.1	9.8	1.1	5.7	0.8	0.6	0.2	0.0	0.0	877
Q3	78.1	1.5	7.4	1.0	7.9	1.0	5.9	0.8	0.7	0.2	0.0	0.0	933
Q4	79.3	1.4	8.4	1.0	8.0	1.0	3.5	0.6	0.7	0.3	0.1	0.1	1,137
Q5(richest)	83.8	1.3	8.5	1.0	5.5	0.8	1.9	0.5	0.4	0.2	0.0	0.0	1,442
M	70.5	8.3	14.6	6.5	11.5	6.9	3.5	2.5	0.0	0.0	0.0	0.0	31
Age													
18-29	92.5	0.8	4.3	0.6	2.5	0.4	0.6	0.2	0.0	0.0	0.0	0.0	1,986
30-44	86.2	0.9	6.6	0.7	4.7	0.5	2.4	0.4	0.1	0.1	0.0	0.0	1,676
45-59	51.9	1.9	17.7	1.5	17.6	1.4	11.4	1.1	1.3	0.4	0.0	0.0	951
60-69	58.7	3.0	12.4	2.0	17.9	2.4	9.7	1.7	1.3	0.6	0.0	0.0	311
70-79	48.6	3.7	12.3	2.5	18.9	3.1	15.4	2.8	4.2	1.5	0.6	0.6	152
80+	41.8	7.8	13.5	6.1	22.3	7.2	14.4	4.8	8.0	3.0	0.0	0.0	55
M	0.0	0.0	0.0	0.0	0.0	0.0	0.0	0.0	0.0	0.0	0.0	0.0	
All	79.0	0.7	8.4	0.5	7.7	0.4	4.3	0.3	0.6	0.1	0.0	0.0	5,131

6.15 Problem with 'sleeping' in last 30 days - q2080

	None	SE	Mild	SE	Moderate	SE	Sever	SE	Extreme/ Cannot do	SE	Missing	SE	N
Gender													
Male	72.3	1.1	13.3	0.9	10.1	0.8	4.0	0.5	0.3	0.1	0.0	0.0	2,545
Female	58.1	1.1	18.2	0.8	14.7	0.8	8.3	0.6	0.6	0.2	0.1	0.0	2,586
M	0.0	0.0	0.0	0.0	0.0	0.0	0.0	0.0	0.0	0.0	0.0	0.0	
Residence													
Urban	64.3	1.1	17.3	0.9	11.5	0.7	6.5	0.6	0.4	0.1	0.1	0.0	2,906
Rural	66.2	1.2	13.8	0.8	13.6	0.8	5.8	0.5	0.5	0.1	0.0	0.0	2,225
M	0.0	0.0	0.0	0.0	0.0	0.0	0.0	0.0	0.0	0.0	0.0	0.0	
Income													
Q1(poorest)	68.1	1.8	12.2	1.2	12.2	1.2	6.9	0.8	0.6	0.2	0.0	0.0	711
Q2	66.4	1.8	12.8	1.2	15.0	1.4	5.5	0.8	0.3	0.2	0.0	0.0	877
Q3	66.4	1.9	14.9	1.4	12.3	1.2	6.0	0.8	0.3	0.2	0.0	0.0	933
Q4	65.2	1.8	14.4	1.3	13.3	1.3	6.4	0.9	0.6	0.2	0.1	0.1	1,137
Q5(richest)	62.0	1.7	21.1	1.4	10.4	0.9	6.1	0.9	0.3	0.2	0.0	0.0	1,442
M	67.1	8.2	13.8	6.2	7.5	4.1	11.6	6.4	0.0	0.0	0.0	0.0	31
Age													
18-29	69.5	1.4	16.3	1.1	10.9	0.9	3.0	0.5	0.2	0.1	0.0	0.0	1,986
30-44	66.5	1.4	16.0	1.1	11.4	0.9	5.6	0.7	0.4	0.2	0.0	0.0	1,676
45-59	60.5	1.7	14.2	1.3	14.5	1.2	10.3	1.1	0.5	0.2	0.0	0.0	951
60-69	51.8	3.2	16.2	2.3	18.8	2.6	12.6	1.9	0.6	0.4	0.0	0.0	311
70-79	50.4	3.7	18.1	2.9	17.1	2.9	12.2	2.6	1.6	1.0	0.6	0.6	152
80+	62.9	7.2	8.5	3.4	10.9	3.6	15.2	6.3	2.6	1.9	0.0	0.0	55
M	0.0	0.0	0.0	0.0	0.0	0.0	0.0	0.0	0.0	0.0	0.0	0.0	
All	65.1	0.8	15.8	0.6	12.4	0.5	6.2	0.4	0.4	0.1	0.0	0.0	5,131

6.16 Problem with 'feeling rested and refreshed' in last 30 days - q2081

	None	SE	Mild	SE	Moderate	SE	Sever	SE	Extreme/ Cannot do	SE	Missing	SE	N
Gender													
Male	71.4	1.2	15.9	1.0	9.8	0.7	2.8	0.4	0.1	0.1	0.0	0.0	2,545
Female	56.2	1.2	21.2	1.0	15.2	0.8	7.0	0.6	0.4	0.1	0.1	0.0	2,586
M	0.0	0.0	0.0	0.0	0.0	0.0	0.0	0.0	0.0	0.0	0.0	0.0	
Residence													
Urban	62.0	1.2	19.5	1.0	13.1	0.8	5.1	0.5	0.2	0.1	0.1	0.0	2,906
Rural	65.9	1.1	17.3	0.9	11.8	0.8	4.7	0.4	0.3	0.1	0.0	0.0	2,225
M	0.0	0.0	0.0	0.0	0.0	0.0	0.0	0.0	0.0	0.0	0.0	0.0	
Income													
Q1(poorest)	68.7	1.8	14.7	1.3	10.3	1.2	6.0	0.8	0.4	0.2	0.0	0.0	711
Q2	66.4	1.7	16.7	1.4	13.6	1.3	3.0	0.5	0.2	0.1	0.0	0.0	877
Q3	67.2	1.8	16.8	1.5	11.3	1.1	4.4	0.7	0.2	0.1	0.0	0.0	933
Q4	60.0	1.7	18.8	1.4	14.7	1.3	6.1	0.9	0.3	0.2	0.1	0.1	1,137
Q5(richest)	60.1	1.8	22.6	1.5	12.2	1.2	4.9	0.7	0.2	0.1	0.0	0.0	1,442
M	70.6	7.7	15.1	5.4	4.0	2.5	10.2	6.3	0.0	0.0	0.0	0.0	31
Age													
18-29	66.2	1.4	19.9	1.2	10.5	0.9	3.2	0.5	0.2	0.1	0.0	0.0	1,986
30-44	64.5	1.5	18.3	1.2	12.5	1.0	4.4	0.6	0.2	0.1	0.0	0.0	1,676
45-59	59.6	1.7	18.0	1.4	14.9	1.2	7.1	0.9	0.3	0.2	0.0	0.0	951
60-69	61.4	2.9	14.0	2.1	17.1	2.4	7.5	1.4	0.1	0.1	0.0	0.0	311
70-79	54.0	3.8	18.5	2.7	16.1	2.8	10.7	2.6	0.2	0.2	0.6	0.6	152
80+	58.9	7.3	13.0	3.8	10.3	3.6	15.2	5.7	2.6	1.9	0.0	0.0	55
M	0.0	0.0	0.0	0.0	0.0	0.0	0.0	0.0	0.0	0.0	0.0	0.0	
All	63.7	0.9	18.6	0.7	12.5	0.6	4.9	0.4	0.3	0.1	0.0	0.0	5,131

6.17 Problem with 'feeling sad, low, or depressed' in last 30 days - q2090

	None	SE	Mild	SE	Moderate	SE	Sever	SE	Extreme/ Cannot do	SE	Missing	SE	N
Gender													
Male	69.0	1.2	16.2	0.9	10.6	0.8	3.5	0.5	0.6	0.2	0.0	0.0	2,545
Female	49.3	1.2	23.1	1.0	17.4	0.9	8.9	0.6	1.2	0.2	0.1	0.0	2,586
M	0.0	0.0	0.0	0.0	0.0	0.0	0.0	0.0	0.0	0.0	0.0	0.0	
Residence													
Urban	55.9	1.2	21.5	1.0	14.2	0.9	7.0	0.6	1.2	0.3	0.1	0.1	2,906
Rural	63.2	1.1	17.3	0.9	13.8	0.8	5.2	0.5	0.5	0.1	0.0	0.0	2,225
M	0.0	0.0	0.0	0.0	0.0	0.0	0.0	0.0	0.0	0.0	0.0	0.0	
Income													
Q1(poorest)	62.4	2.0	17.3	1.5	14.6	1.4	5.2	0.7	0.4	0.2	0.0	0.0	711
Q2	63.7	1.8	15.2	1.4	14.6	1.3	5.8	0.8	0.7	0.3	0.0	0.0	877
Q3	64.6	1.8	15.7	1.3	13.0	1.2	5.8	0.8	0.7	0.3	0.1	0.1	933
Q4	57.7	1.8	18.4	1.4	13.6	1.3	8.8	1.0	1.3	0.3	0.1	0.1	1,137
Q5(richest)	52.2	1.7	27.1	1.5	14.4	1.1	5.2	0.8	1.0	0.4	0.0	0.0	1,442
M	57.4	8.7	20.1	6.4	13.3	5.9	9.2	6.0	0.0	0.0	0.0	0.0	31
Age													
18-29	61.0	1.3	19.5	1.2	13.4	1.0	5.3	0.6	0.7	0.3	0.0	0.0	1,986
30-44	60.1	1.5	20.3	1.2	12.9	1.0	5.9	0.6	0.7	0.2	0.0	0.0	1,676
45-59	55.7	1.9	19.9	1.6	15.2	1.3	7.9	1.0	1.1	0.4	0.2	0.1	951
60-69	56.3	2.9	17.6	2.0	17.9	2.6	7.1	1.4	1.1	0.6	0.0	0.0	311
70-79	49.1	3.6	20.5	3.2	20.2	3.0	8.7	2.3	0.9	0.6	0.6	0.6	152
80+	59.5	7.7	9.3	3.8	10.4	4.4	11.7	5.5	9.2	6.0	0.0	0.0	55
M	0.0	0.0	0.0	0.0	0.0	0.0	0.0	0.0	0.0	0.0	0.0	0.0	
All	59.1	0.8	19.7	0.7	14.0	0.6	6.2	0.4	0.9	0.2	0.1	0.0	5,131

6.18 Problem with 'worry or anxiety' in last 30 days - q2091

	None	SE	Mild	SE	Moderate	SE	Sever	SE	Extreme/ Cannot do	SE	Missing	SE	N
Gender													
Male	52.3	1.2	22.3	1.0	17.0	0.9	7.6	0.7	0.7	0.2	0.0	0.0	2,545
Female	37.0	1.1	25.6	1.0	21.2	1.0	14.8	0.8	1.3	0.2	0.1	0.0	2,586
M	0.0	0.0	0.0	0.0	0.0	0.0	0.0	0.0	0.0	0.0	0.0	0.0	
Residence													
Urban	39.2	1.1	28.3	1.1	18.9	0.9	12.4	0.8	1.1	0.2	0.1	0.1	2,906
Rural	51.6	1.3	18.2	0.9	19.5	0.9	9.7	0.7	0.9	0.2	0.0	0.0	2,225
M	0.0	0.0	0.0	0.0	0.0	0.0	0.0	0.0	0.0	0.0	0.0	0.0	
Income													
Q1(poorest)	53.6	1.9	16.5	1.4	17.8	1.4	11.0	1.1	1.1	0.4	0.0	0.0	711
Q2	52.7	2.0	16.3	1.3	20.0	1.5	9.9	1.1	1.1	0.4	0.0	0.0	877
Q3	49.1	2.1	21.1	1.6	17.4	1.4	11.3	1.2	0.9	0.3	0.1	0.1	933
Q4	40.9	1.8	26.1	1.6	18.5	1.4	12.8	1.3	1.6	0.4	0.1	0.1	1,137
Q5(richest)	35.2	1.6	32.6	1.8	20.7	1.4	10.9	1.1	0.5	0.2	0.0	0.0	1,442
M	46.3	9.2	16.6	6.6	26.4	8.0	10.7	6.2	0.0	0.0	0.0	0.0	31
Age													
18-29	48.9	1.4	22.9	1.2	18.2	1.2	9.2	0.9	0.8	0.2	0.0	0.0	1,986
30-44	42.4	1.5	26.1	1.3	19.2	1.1	11.2	0.9	1.0	0.3	0.0	0.0	1,676
45-59	40.2	2.0	22.3	1.8	21.3	1.6	14.8	1.3	1.3	0.4	0.2	0.1	951
60-69	44.5	3.0	24.3	2.8	17.6	2.3	12.2	1.9	1.4	0.6	0.0	0.0	311
70-79	40.7	3.7	23.9	3.6	20.7	3.2	13.5	2.6	0.6	0.6	0.6	0.6	152
80+	43.3	7.5	21.6	6.3	20.0	7.3	10.9	5.3	4.1	2.6	0.0	0.0	55
M	0.0	0.0	0.0	0.0	0.0	0.0	0.0	0.0	0.0	0.0	0.0	0.0	
All	44.6	0.8	23.9	0.8	19.2	0.7	11.2	0.5	1.0	0.2	0.1	0.0	5,131

7.1 Self-reported utilization of health services and perceived unmet need

	<u>Ambulatory Adult</u>		<u>Ambulatory Child</u>		<u>Inpatient Adult</u>		<u>Inpatient Child</u>		<u>Informal Care</u>		<u>Unmet Care</u>		<u>Non use</u>	
	%	SE	%	SE	%	SE	%	SE	%	SE	%	SE	%	SE
Sex														
Female	51.3	1.3	14.6	0.8	3.3	0.4	0.6	0.2	1.7	0.3	10.3	1.1	18.1	1.0
Male	40.8	1.3	11.7	0.9	1.5	0.3	0.4	0.1	1.2	0.3	13.5	1.3	30.8	1.3
Area of Residence														
Urban	53.2	1.5	13.5	0.8	2.4	0.4	0.3	0.1	0.9	0.2	8.3	1.2	21.4	1.2
Rural	38.9	1.3	13.1	0.8	2.5	0.4	0.8	0.2	2.2	0.3	15.7	1.7	26.9	1.2
Age Group														
18-29y	47.6	1.5	13.6	0.9	2.8	0.4	0.5	0.2	1.6	0.3	12.4	1.4	21.4	1.2
30-44y	38.4	1.5	23.0	1.3	2.6	0.5	0.9	0.2	1.8	0.4	11.9	1.2	21.3	1.2
45-59y	48.9	1.9	7.3	0.9	1.5	0.4	0.4	0.2	0.5	0.2	11.8	1.5	29.7	1.8
60-69y	54.3	3.0	1.8	0.7	2.1	0.8	0.0	0.0	1.3	0.6	9.1	1.7	31.4	2.7
70+y	60.3	3.3	0.1	0.1	3.0	1.0	0.0	0.0	1.9	0.9	10.7	2.0	24.0	2.7
Education Years														
0	32.1	3.8	6.7	2.0	4.1	1.5	0.2	0.2	3.5	1.5	20.5	3.8	32.7	3.8
1-5	40.4	1.5	10.5	0.8	2.8	0.5	0.6	0.2	1.7	0.3	14.5	1.5	29.5	1.5
6-11	43.7	1.4	15.2	1.0	2.4	0.4	0.6	0.2	1.2	0.2	13.0	1.4	24.0	1.2
12+	59.2	1.8	14.5	1.1	1.9	0.4	0.5	0.2	1.2	0.4	5.8	1.0	16.9	1.4
Income Quintiles														
Q1	28.2	1.6	16.4	1.5	2.5	0.6	0.7	0.3	4.1	0.8	18.1	2.3	29.9	1.8
Q2	38.1	1.9	12.1	1.4	3.1	0.7	1.2	0.4	1.8	0.5	16.2	2.0	27.4	1.9
Q3	43.2	1.9	12.6	1.2	2.1	0.6	0.4	0.2	0.6	0.3	12.9	1.9	28.1	1.9
Q4	48.9	2.1	14.6	1.2	2.9	0.6	0.3	0.2	0.4	0.2	9.2	1.4	23.7	1.8
Q5	62.2	1.8	11.9	1.1	1.9	0.5	0.3	0.2	1.2	0.4	6.7	1.3	15.9	1.3
Ownership														
Government	52.9	1.5	21.2	1.2	3.8	0.5	1.0	0.2	0.7	0.2	11.0	1.3	9.6	0.8
Private	70.7	1.4	12.3	0.9	2.4	0.4	0.4	0.2	2.0	0.4	7.4	1.0	4.8	0.6
NGO	51.8	9.1	23.9	7.4	1.2	1.2	0.0	0.0	5.5	3.2	11.9	6.5	5.8	3.6
Other	50.9	5.8	12.6	3.3	2.2	1.6	0.0	0.0	21.9	4.8	4.7	2.7	7.8	3.8
TOTAL	46.5	1.0	13.3	0.6	2.4	0.3	0.5	0.1	1.5	0.2	11.8	1.0	24.0	0.9

This table presents the percent of people reporting utilization of health services when they last needed care. It combines information from Q7000, Q7001 and Q7016. Utilization was recorded in the WHS in three separate categories: ambulatory care, hospital inpatient care, and informal care. Time cut-offs for utilization recall used here are 1 year for ambulatory care and informal care, and 3 years for hospital inpatient care. Utilization of ambulatory and inpatient care services

have been further sub-divided into "adult" and "child" categories. In addition to utilization, two other related aspects are being reported here - unmet need and non-use (regardless of expressed need) of health services. Unmet need was estimated on the basis of responses to Q7000 and Q7004. Non-use of health services is simply the percent of respondents who reported no need in Q7000 or did not utilize services in the time cut-offs mentioned above.

Results are reported for the total WHS sample (category: "TOTAL"), and by the following sample sub-groups: sex, area of residence, age group, years of education, income quintiles, and ownership (of health facility). Mean values and standard errors (SE) are reported for each category.

Sub-groups common to other tables were constructed in the same manner. Common sub-groups include sex (Q1001), area of residence (Q0104), age group (regrouping of reported age in Q1002), years of education (Q1010) and income quintiles. To determine income and subsequently income quintiles, an asset index was constructed for each household using responses to section 0700 on "Permanent Income Indicators" from the WHS household questionnaire.

Ownership was constructed uniquely for the responsiveness section's tables. There are four categories of ownership: "Operated by the government" (Government), "Privately operated" (Private), "NGO" and "Other". To construct the ownership sub-group, information was combined from (a) Q7204, Q7205 and Q7301 for those utilizing ambulatory services, and (b) Q7200, Q7201 and Q7401 for those utilizing hospital inpatient services.

7.2 Patient assessed characteristics of ambulatory health services

	Patients visiting a medical doctor, of those visiting any health care provider		Patients rating characteristics of health care provider as adequate/more than adequate						Mean time taken to reach health facility (in minutes)		Patients using private car or motorcycle to reach facility		Mean cost for an ambulatory care visit (local currency)		Percent of population perceiving discrimination	
	%	SE	%	SE	%	SE	%	SE	Minutes	SE	%	SE	mean cost	SE	%	SE
Sex																
Female	60.2	1.6	97.0	0.5	91.5	0.9	90.2	1.1	39.5	2.4	23.7	1.6	85,318.5	12,071.9	6.8	0.8
Male	50.7	1.9	95.7	0.7	89.7	1.1	90.5	1.2	37.1	2.9	36.0	2.0	70,967.4	4,600.6	7.9	1.1
Area of Residence																
Urban	64.9	1.7	97.1	0.6	92.3	0.9	90.6	1.3	27.6	1.9	33.8	2.0	93,283.3	12,596.3	7.5	1.0
Rural	44.6	1.9	95.5	0.7	88.5	1.1	89.9	1.2	51.7	3.4	24.1	1.8	61,676.8	3,325.4	7.2	1.0
Age Group																
18-29y	45.9	2.2	96.3	0.8	90.7	1.3	88.4	1.6	32.8	2.2	28.8	2.2	63,529.4	4,547.2	7.9	1.1
30-44y	55.8	2.2	95.7	0.8	88.0	1.5	90.7	1.4	37.4	2.6	29.4	2.2	67,891.1	4,844.2	8.1	1.3
45-59y	62.1	2.5	96.8	0.8	91.7	1.4	90.3	1.6	41.5	3.5	30.3	2.5	82,992.6	7,654.9	7.1	1.5
60-69y	68.8	4.0	98.2	1.2	94.2	1.9	95.0	1.7	43.0	4.8	29.2	3.8	65,651.0	6,484.4	4.7	2.0
70+y	75.4	3.9	96.4	2.0	93.5	2.2	93.3	2.3	59.4	16.1	30.9	4.8	229,831.9	110,000.0	4.7	1.8
Education Years																
0	46.4	5.9	96.9	1.8	87.2	3.7	94.5	2.2	85.1	29.3	23.1	5.3	80,225.5	13,246.6	6.8	3.0
1-5	48.3	2.2	96.4	0.8	88.3	1.5	91.0	1.3	49.1	3.2	20.3	1.8	59,465.6	4,557.8	6.5	1.1
6-11	57.3	2.0	96.4	0.7	91.9	1.0	92.6	1.1	36.5	2.4	25.4	1.9	86,563.7	15,901.9	8.6	1.1
12+	61.4	2.5	96.3	0.9	91.4	1.3	86.2	1.8	26.7	2.4	43.5	2.8	85,316.5	8,335.4	6.5	1.2
Income Quintiles																
Q1	37.7	2.9	96.7	0.9	85.6	2.3	91.3	1.5	55.5	4.2	13.0	1.8	48,480.1	4,575.8	8.7	1.8
Q2	46.2	2.8	97.0	0.9	91.6	1.6	91.3	1.8	56.2	6.9	18.4	2.6	58,443.5	5,379.9	6.0	1.3
Q3	52.9	3.2	95.1	1.2	90.2	1.7	88.7	2.2	39.9	3.6	22.2	2.9	68,529.8	5,899.5	7.0	1.5
Q4	61.1	2.6	95.4	1.1	90.2	1.6	91.0	1.8	30.8	2.6	30.4	2.4	70,579.0	5,056.4	8.2	1.4
Q5	66.5	2.5	97.3	0.7	92.7	1.2	89.8	1.5	26.6	2.3	46.3	2.8	116,836.5	23,059.2	6.4	1.3
Condition																
Child-Visit	58.9	3.8	98.2	0.8	90.7	2.2	93.9	2.6	35.7	3.4	27.0	4.0	63,709.5	11,768.2	9.7	2.3
Preventive	46.6	4.9	98.3	1.3	94.5	1.8	86.1	4.2	32.5	5.0	11.4	3.8	37,810.8	7,652.7	4.7	1.9
Childbirth	10.8	6.3	100.0	0.0	76.4	11.1	72.5	11.3	62.3	45.4	9.4	6.8	112,711.8	19,479.7	9.5	7.1
Acute	65.1	3.7	95.5	1.5	87.1	2.6	94.5	1.9	33.7	2.8	28.8	3.8	70,696.2	7,623.6	11.7	2.4
Injury	51.3	7.2	98.3	1.4	83.0	4.9	91.3	3.8	36.7	5.2	55.6	6.8	76,616.6	20,288.0	9.7	3.8
Chronic	82.9	5.6	96.3	2.4	92.9	3.2	96.8	2.3	43.5	6.4	33.1	7.4	112,958.1	52,489.7	5.6	3.7

	Patients visiting a medical doctor, of those visiting any health care provider		Patients rating characteristics of health care provider as adequate/more than adequate						Mean time taken to reach health facility (in minutes)		Patients using private car or motorcycle to reach facility		Mean cost for an ambulatory care visit (local currency)		Percent of population perceiving discrimination	
	%	SE	%	SE	%	SE	%	SE	Minutes	SE	%	SE	mean cost	SE	%	SE
Other	55.1	1.5	96.1	0.5	91.3	0.8	89.7	1.0	39.6	2.4	29.5	1.5	81,759.3	8,959.7	6.8	0.8
Ownership																
Government	70.3	1.8	95.4	0.7	90.4	1.1	90.6	1.2	40.0	3.2	25.4	1.8	54,777.7	3,564.3	8.0	1.0
Private	45.8	1.8	97.3	0.6	91.9	0.9	90.7	1.1	37.8	2.4	34.0	1.8	101,827.1	12,700.9	6.3	0.8
NGO	70.9	10.6	100.0	0.0	96.6	2.9	97.9	1.7	26.0	7.8	9.8	4.5	43,736.5	14,290.5	24.4	10.0
Other	21.7	5.0	93.4	3.1	71.7	5.8	77.3	5.7	31.0	4.5	19.8	5.4	31,595.1	5,100.7	8.0	3.2
Self-Assessed Health																
Very-Good	50.9	2.3	98.6	0.5	92.7	1.1	91.5	1.3	35.8	2.8	32.1	2.2	63,978.7	4,434.5	5.2	1.0
Good	57.0	2.0	96.3	0.7	89.5	1.2	90.5	1.4	34.6	3.2	30.4	2.1	74,008.6	6,610.3	7.5	1.1
Moderate	60.0	2.3	94.2	1.1	90.9	1.3	88.9	1.6	45.2	3.2	25.1	2.2	99,762.6	23,130.8	9.6	1.4
Bad	50.9	7.9	91.9	3.7	81.3	6.4	85.0	5.1	56.9	9.1	29.5	7.3	121,417.6	31,668.9	7.1	4.6
Very-Bad	93.8	6.6	79.8	15.3	48.3	23.4	94.1	6.2	60.4	18.4	5.9	6.2	51,486.5	13,476.6	21.4	16.2
TOTAL	55.8	1.3	96.4	0.4	90.6	0.7	90.3	0.9	38.4	2.0	29.4	1.4	78,701.7	6,937.6	7.3	0.7

This table looks at various characteristics of a visit to an ambulatory care facility, for those who utilized such services in the previous 12 months (Q7204 and Q7205). Characteristics of a visit reported here include:

- (1) The percent of patients visiting a medical doctor (of those visiting any ambulatory provider) (Q7302).
- (2) Patients' rating of *skills*, *equipment*, and *drug supplies* of the provider as "adequate": percent of patients who reported "Yes" to questions Q7304, Q7305 and Q7306, respectively.
- (3) Barriers or facilitators to care access have been reported here for those who utilized ambulatory care services in the last 12 months. They include:
 - (a) *Mean time taken to reach facility*: patient reported times from Q7307 were used to calculate averages across sample sub-groups.
 - (b) *Patients using private motor vehicles*: percent of patients who reported using a "private car or motorcycle" to get to the facility in Q7308.
 - (c) *Mean cost of visit*: patient reported costs in Q7309-Q7313 were summed up for an individual and then averaged across sample sub-groups.
 - (d) *Perceived discrimination*: percent of patients who reported "Yes" to any form of discrimination listed in Q7328-Q7334.

Results are reported for the total WHS sample (category: "TOTAL"), and by the following sample sub-groups: sex, area of residence, age group, years of education, income quintiles, reason for seeking care (condition), ownership (of health facility), and self-assessed health. Mean values and standard errors (SE) are reported for each category.

Sub-groups common to other tables were constructed in the same manner. Common sub-groups include: sex (Q1001), area of residence (Q0104), age group (regrouping of reported age in Q1002), years of education (Q1010) and income quintiles. To determine income and subsequently income quintiles, an asset index was constructed for each household using responses to section 0700 on "Permanent Income Indicators" from the WHS household questionnaire.

Ownership, condition and self-assessed health sub-groups were constructed uniquely for the responsiveness section's tables. There are four categories of ownership: "Operated by the government" (Government), "Privately operated" (Private), "NGO" and "Other". To construct the ownership sub-group, information was combined from (a) Q7204, Q7205 and Q7301 for those utilizing ambulatory services, and (b) Q7200, Q7201 and Q7401 for those utilizing hospital inpatient services. The sub-group "Condition" used and regrouped information from Q7003 ("Which reason best describes why you [your child] last needed health care?") into 6 categories. The six categories include preventive care (immunization, antenatal consultation and family planning); childbirth; acute conditions (high fever, severe diarrhoea, or cough); injury; chronic conditions (arthritis, asthma and heart disease); and other (dental care, minor surgery and other). Self-assessed health was constructed using information from Q2000 ("In general, how would you rate your health today as?") in the WHS. Respondents could select one of the

following five categories: "Very good", "Good", "Moderate", "Bad" and "Very bad".

7.3.1 Patient assessment of responsiveness domains for ambulatory services: percent reporting "Moderate", "Bad" or "Very bad" - 1

	Prompt Attention				Dignity				Communication			
	Travel Time		Wait Time		Talked Respectfully		Privacy		Clear Explanation		Time for Questions	
	%	SE	%	SE	%	SE	%	SE	%	SE	%	SE
Sex												
Female	24.5	1.4	26.5	1.5	4.9	0.6	3.5	0.7	7.7	0.9	8.7	0.9
Male	20.3	1.5	23.1	1.6	5.0	0.8	4.5	0.8	6.4	0.8	9.2	1.0
Area of Residence												
Urban	17.5	1.4	25.6	1.6	5.2	0.8	3.8	0.7	6.3	0.9	7.7	0.9
Rural	28.7	1.6	24.0	1.6	4.6	0.6	4.2	0.8	8.0	0.9	10.4	1.1
Age Group												
18-29y	22.7	1.9	28.5	2.1	5.1	0.9	4.9	1.2	7.6	1.3	9.8	1.3
30-44y	22.0	1.8	23.5	1.8	5.9	1.0	4.3	1.0	8.3	1.2	11.0	1.4
45-59y	25.5	2.2	23.6	2.2	4.0	0.9	2.9	0.8	6.5	1.2	6.7	1.2
60-69y	16.8	3.0	21.5	3.6	2.4	1.0	2.8	1.3	4.4	1.4	5.1	1.6
70+y	20.6	3.7	18.3	3.9	6.5	2.7	2.0	1.2	4.3	1.5	7.6	2.2
Education Years												
0	22.7	4.8	20.1	5.1	0.7	0.7	2.4	1.8	8.0	2.9	8.8	3.0
1-5	25.3	1.9	20.6	1.8	4.0	0.8	2.7	0.7	7.2	1.0	9.1	1.1
6-11	24.2	1.6	25.1	1.7	4.8	0.8	4.9	0.8	7.5	1.1	8.8	1.1
12+	17.8	1.9	29.0	2.3	6.4	1.2	3.9	1.2	6.4	1.2	8.9	1.3
Income Quintiles												
Q1	28.2	2.4	21.2	2.4	5.0	1.1	3.3	1.1	8.3	1.4	10.9	1.5
Q2	30.1	2.8	23.9	2.5	3.9	1.0	4.4	1.3	6.9	1.4	11.2	1.7
Q3	17.7	2.2	27.3	2.7	5.8	1.2	4.3	1.0	8.6	1.6	10.2	1.6
Q4	24.3	2.2	28.1	2.2	6.0	1.2	4.5	1.2	7.3	1.3	7.9	1.4
Q5	16.8	2.0	23.3	2.3	4.3	1.1	3.3	1.1	5.8	1.2	7.1	1.2
Condition												
Child-Visit	22.6	3.0	22.5	2.9	6.5	1.9	3.4	1.3	6.7	1.9	7.9	2.0
Preventive	25.4	5.1	28.2	4.6	8.7	2.7	6.5	2.7	9.6	3.3	14.8	3.7
Childbirth	28.4	14.5	11.7	8.2	7.9	7.5	4.9	4.9	11.8	8.2	11.8	8.2
Acute	21.5	3.0	24.8	3.1	3.9	1.2	3.1	1.3	5.8	1.4	9.2	2.0
Injury	24.4	5.4	23.3	5.3	6.5	3.0	3.3	1.6	9.3	3.8	11.5	4.2
Chronic	25.0	5.9	33.8	6.8	4.5	2.5	2.2	1.9	2.8	2.0	10.8	4.9
Other	21.9	1.2	24.6	1.3	4.7	0.6	4.0	0.6	7.1	0.7	8.3	0.7
Ownership												
Government	26.2	1.8	36.4	2.0	7.7	1.0	6.6	1.0	10.9	1.2	12.4	1.2
Private	19.3	1.3	15.9	1.2	2.9	0.5	1.6	0.4	3.7	0.6	5.7	0.7
NGO	12.1	5.3	15.8	5.8	3.4	2.8	3.4	3.4	8.4	4.7	17.9	9.2
Other	30.0	7.1	23.3	5.5	2.7	2.1	7.5	3.5	10.1	3.5	10.2	3.2
Self-Assessed Health												
Very-Good	18.0	1.8	20.6	2.0	3.6	0.8	2.2	0.6	4.1	0.8	5.7	0.9
Good	20.8	1.6	24.4	1.8	5.0	1.0	4.6	1.1	8.5	1.2	10.6	1.3
Moderate	27.8	2.1	29.9	2.1	6.3	1.1	4.9	1.0	8.8	1.2	10.4	1.2
Bad	47.8	8.0	32.6	7.1	7.6	4.1	4.8	3.0	6.5	4.0	9.3	4.4
Very-Bad	75.3	16.0	60.1	21.3	0.0	0.0	14.3	13.9	14.3	13.9	14.3	13.9
TOTAL	22.5	1.1	24.9	1.1	4.9	0.5	4.0	0.5	7.1	0.6	8.9	0.7

The following table reports the percent of people perceiving poor responsiveness in ambulatory care facilities, where "poor" is defined as a rating of "Moderate", "Bad" or "Very bad" in Q7315-Q7327 which have 5 response options (including "Good" and "Very good"). Ratings for each of the seven domains of ambulatory care responsiveness (including 13 questions) by patients have been presented here. There are two questions each for six of the seven domains; the domain choice has only one question. The following questions from the survey have been used to determine patient assessment of each responsiveness domain:

- (1) *Prompt attention*: travel time (Q7315) and wait time (Q7316).
- (2) *Dignity*: talked respectfully (Q7317) and privacy (Q7318).
- (3) *Communication*: clear explanation (Q7319) and time for questions (Q7320).
- (4) *Autonomy*: treatment information (Q7321) and involvement (Q7322).
- (5) *Confidentiality*: talk privately (Q7323) and confidentiality of records (Q7324).
- (6) *Choice of health care provider*: Q7325.
- (7) *Basic amenities*: cleanliness (Q7326) and space (Q7327).

Results are reported for the total WHS sample (category: "TOTAL"), and by the following sample sub-groups: sex, area of residence, age group, years of education, income quintiles, reason for visit, ownership (of health facility), and self-assessed health. Mean values and standard errors (SE) are reported for each category.

Sub-groups common to other tables were constructed in the same manner. Common sub-groups include sex (Q1001), area of residence (Q0104), age group (regrouping of reported age in Q1002), years of education (Q1010) and income quintiles. To determine income and subsequently income quintiles, an asset index was constructed for each household using responses to section 0700 on "Permanent Income Indicators" from the WHS household questionnaire.

Ownership, condition and self-assessed health sub-groups were constructed uniquely for the responsiveness section's tables. There are four categories of ownership: "Operated by the government" (Government), "Privately operated" (Private), "NGO" and "Other". To construct the ownership sub-group, information was combined from (a) Q7204, Q7205 and Q7301 for those utilizing ambulatory services, and (b) Q7200, Q7201 and Q7401 for those utilizing hospital inpatient services. The sub-group "Condition" used and regrouped information from Q7003 ("Which reason best describes why you [your child] last needed health care?") into 6 categories. The six categories include preventive care (immunization, antenatal consultation and family planning); childbirth; acute conditions (high fever, severe diarrhoea, or cough); injury; chronic conditions (arthritis, asthma and heart disease); and other (dental care, minor surgery and other). Self-assessed health was constructed using information from Q2000 ("In general, how would you rate your health today as?") in the WHS. Respondents were asked to select one of the following five categories: "Very good", "Good", "Moderate", "Bad" and "Very bad".

7.3.2 Patient assessment of responsiveness domains for ambulatory services: percent reporting "Moderate", "Bad" or "Very bad" - 2

	Autonomy				Confidentiality				Choice of Healthcare Provider		Basic Amenities			
	Treatment Information		Involvement		Talk Privately		Confidentiality of Records				Cleanliness		Space	
	%	SE	%	SE	%	SE	%	SE	%	SE	%	SE		
Sex														
Female	12.4	1.1	9.1	1.0	8.5	1.0	7.1	0.9	17.4	1.2	12.5	1.2	15.6	1.2
Male	12.9	1.2	11.4	1.1	10.3	1.0	7.6	0.9	19.1	1.4	12.7	1.3	17.5	1.4
Area of Residence														
Urban	11.3	1.1	7.7	1.0	8.1	1.0	6.0	0.9	16.2	1.3	12.7	1.3	16.4	1.4
Rural	14.2	1.2	13.3	1.1	10.8	1.0	9.0	1.0	20.5	1.5	12.5	1.2	16.6	1.3
Age Group														
18-29y	13.6	1.6	11.7	1.4	10.4	1.3	8.0	1.2	20.7	1.8	16.4	1.6	20.1	1.7
30-44y	15.5	1.5	10.3	1.2	8.9	1.2	7.8	1.2	20.1	1.8	12.9	1.5	15.6	1.6
45-59y	10.2	1.5	8.7	1.4	10.7	1.7	7.0	1.4	15.5	1.9	9.9	1.6	16.4	2.0
60-69y	7.7	2.2	6.7	1.8	6.1	1.9	5.5	1.8	9.3	2.4	4.5	1.5	8.0	2.6
70+y	9.2	2.7	10.8	3.2	4.1	1.5	4.3	1.6	15.6	3.4	9.3	3.0	10.6	3.1
Education Years														
0	11.4	3.7	12.3	3.3	11.7	3.7	9.0	3.6	14.0	4.2	8.7	3.7	17.4	5.4
1-5	12.5	1.4	11.4	1.3	9.1	1.3	7.3	1.2	17.0	1.6	7.9	1.2	13.1	1.6
6-11	12.7	1.2	10.7	1.2	8.8	1.0	8.5	1.1	17.9	1.6	13.8	1.4	16.6	1.4
12+	12.8	1.7	8.3	1.4	10.0	1.5	5.6	1.3	20.0	1.8	15.4	1.8	19.2	2.1
Income Quintiles														
Q1	16.2	1.9	14.2	1.8	10.4	1.5	9.3	1.6	19.5	2.5	10.6	1.8	15.7	2.1
Q2	12.7	1.9	12.6	1.8	11.1	1.9	10.9	2.0	19.0	2.2	9.6	1.8	16.2	2.3
Q3	13.4	1.8	10.8	1.7	10.3	1.6	7.8	1.5	18.9	2.3	14.3	2.2	15.1	2.2
Q4	14.7	1.8	9.8	1.5	9.1	1.5	6.8	1.3	20.2	2.1	13.0	1.7	17.6	1.9
Q5	9.2	1.6	7.2	1.3	7.8	1.3	4.8	1.2	14.8	1.8	13.4	1.9	16.7	1.9
Condition														
Child-Visit	13.5	2.6	10.8	2.2	11.6	2.2	10.2	2.4	26.0	3.4	10.2	2.4	13.2	2.6
Preventive	18.4	4.1	16.6	3.8	15.1	3.8	11.6	3.7	19.0	4.1	15.7	4.5	16.0	4.1
Childbirth	12.4	8.6	12.5	8.6	14.8	8.5	11.8	8.2	28.5	11.1	0.0	0.0	0.0	0.0
Acute	11.0	2.2	7.2	1.6	8.6	1.8	7.1	1.7	20.5	3.0	11.2	2.1	11.3	2.2
Injury	17.8	5.0	10.4	3.2	15.5	4.2	11.7	3.6	30.2	6.1	12.6	3.9	18.4	5.0
Chronic	10.7	4.5	12.5	5.4	4.8	2.6	3.2	2.3	19.5	5.8	13.5	4.9	21.9	6.2
Other	12.2	0.9	10.0	0.8	8.7	0.8	6.9	0.8	16.8	1.1	12.6	1.1	17.0	1.1
Ownership														
Government	16.1	1.4	14.6	1.3	13.2	1.3	10.3	1.2	26.5	1.7	21.1	1.7	22.4	1.6
Private	8.8	0.9	6.4	0.8	5.6	0.8	4.8	0.7	10.9	1.0	5.5	0.8	10.9	1.1
NGO	17.3	9.2	7.7	4.6	7.7	4.6	5.2	3.8	19.1	7.0	0.7	0.8	2.4	1.9
Other	25.5	5.7	13.7	4.0	18.9	4.9	9.3	3.4	24.6	5.7	18.0	6.0	41.5	8.4
Self-Assessed Health														
Very-Good	8.1	1.1	5.8	1.0	7.1	1.1	4.5	0.9	14.0	1.5	10.1	1.3	12.8	1.5
Good	14.5	1.5	10.6	1.2	9.1	1.2	7.8	1.2	19.6	1.7	13.4	1.6	17.7	1.8
Moderate	15.6	1.6	14.8	1.6	12.2	1.4	9.5	1.3	20.9	2.0	13.8	1.8	18.3	1.9
Bad	12.5	4.7	13.2	4.2	11.6	4.9	13.8	5.8	23.3	6.7	19.3	6.4	28.4	6.9
Very-Bad	14.3	13.9	14.3	13.9	14.3	13.9	14.3	13.9	14.3	13.9	20.2	15.3	14.3	13.9
TOTAL	12.6	0.8	10.2	0.7	9.4	0.7	7.3	0.7	18.2	1.0	12.6	0.9	16.5	1.0

The following table reports the percent of people perceiving poor responsiveness in ambulatory care facilities, where "poor" is defined as a rating of "Moderate", "Bad" or "Very bad" in Q7315-Q7327 which have 5 response options (including "Good" and "Very good"). Ratings for each of the seven domains of ambulatory care responsiveness (including 13 questions) by patients have been presented here. There are two questions each for six of the seven domains; the domain choice has only one question. The following questions from the survey have been used to determine patient assessment of each responsiveness domain:

- (1) *Prompt attention*: travel time (Q7315) and wait time (Q7316).
- (2) *Dignity*: talked respectfully (Q7317) and privacy (Q7318).
- (3) *Communication*: clear explanation (Q7319) and time for questions (Q7320).
- (4) *Autonomy*: treatment information (Q7321) and involvement (Q7322).
- (5) *Confidentiality*: talk privately (Q7323) and confidentiality of records (Q7324).
- (6) *Choice of health care provider*: Q7325.
- (7) *Basic amenities*: cleanliness (Q7326) and space (Q7327).

Results are reported for the total WHS sample (category: "TOTAL"), and by the following sample sub-groups: sex, area of residence, age group, years of education, income quintiles, reason for visit, ownership (of health facility), and self-assessed health. Mean values and standard errors (SE) are reported for each category.

Sub-groups common to other tables were constructed in the same manner. Common sub-groups include sex (Q1001), area of residence (Q0104), age group (regrouping of reported age in Q1002), years of education (Q1010) and income quintiles. To determine income and subsequently income quintiles, an asset index was constructed for each household using responses to section 0700 on "Permanent Income Indicators" from the WHS household questionnaire.

Ownership, condition and self-assessed health sub-groups were constructed uniquely for the responsiveness section's tables. There are four categories of ownership: "Operated by the government" (Government), "Privately operated" (Private), "NGO" and "Other". To construct the ownership sub-group, information was combined from (a) Q7204, Q7205 and Q7301 for those utilizing ambulatory services, and (b) Q7200, Q7201 and Q7401 for those utilizing hospital inpatient services. The sub-group "Condition" used and regrouped information from Q7003 ("Which reason best describes why you [your child] last needed health care?") into 6 categories. The six categories include preventive care (immunization, antenatal consultation and family planning); childbirth; acute conditions (high fever, severe diarrhoea, or cough); injury; chronic conditions (arthritis, asthma and heart disease); and other (dental care, minor surgery and other). Self-assessed health was constructed using information from Q2000 ("In general, how would you rate your health today as?") in the WHS. Respondents were asked to select one of the following five categories: "Very good", "Good", "Moderate", "Bad" and "Very bad".

7.4 Patient assessed characteristics of hospital inpatient health services

	Patients staying for more than 6 days on last hospital visit		Patients rating characteristics of health care provider as adequate / more than adequate				Mean time taken to reach health facility (in minutes)		Patients using private car or motorcycle to reach facility		Patients waiting more than a month to be admitted		Mean number of patients sleeping in the same room		Mean cost for a hospital visit		Percent of population perceiving discrimination			
	%	SE	%	SE	%	SE	%	SE	Minutes	SE	%	SE	%	SE	No	SE	mean cost	SE	%	SE
Sex																				
Female	13.7	1.5	95.8	0.8	95.0	0.9	96.6	0.7	45.3	2.9	65.2	2.0	2.2	0.8	3.3	0.7	956,948.4		12.7	1.4
Male	29.2	3.3	93.4	1.8	91.5	1.9	95.8	1.4	66.6	8.0	62.3	3.7	1.0	0.5	3.2	0.7	1,500,000.0		12.3	2.3
Area of Residence																				
Urban	15.8	1.8	94.2	1.1	93.6	1.2	96.1	1.0	33.4	2.7	72.1	2.4	2.4	1.0	3.2	0.7	1,300,000.0		14.0	1.7
Rural	21.5	2.3	96.4	0.9	94.7	1.1	96.9	0.8	78.0	6.1	52.9	2.8	1.0	0.4	3.4	0.7	855,445.3		10.4	1.6
Age Group																				
18-29y	16.0	2.2	95.7	1.2	95.4	1.1	97.6	0.8	46.2	4.2	62.3	2.9	0.2	0.2	3.5	0.8	709,584.9		16.8	2.3
30-44y	16.5	2.2	93.8	1.4	92.1	1.7	95.2	1.3	47.9	4.9	64.3	2.9	2.0	1.2	3.2	0.7	1,600,000.0		12.6	1.8
45-59y	23.5	4.3	94.9	2.1	95.5	2.0	94.8	2.5	50.9	6.4	71.3	4.9	3.3	1.6	2.8	0.8	1,100,000.0		5.9	2.0
60-69y	17.7	5.5	98.7	1.3	93.5	3.9	98.7	1.3	77.8	13.3	66.8	8.5	11.4	6.5	1.9	0.7	1,400,000.0		6.8	3.6
70+y	33.4	6.7	96.1	2.5	94.2	3.1	96.8	2.4	87.5	18.8	64.3	6.7	0.9	0.9	4.0	1.2	1,400,000.0		0.7	0.7
Education Years																				
0	20.0	6.4	95.4	3.8	95.4	3.8	96.3	3.7	118.5	30.4	56.6	8.4	0.0	0.0	5.0	1.8	556,645.5		9.3	3.4
1-5	24.5	2.8	96.4	1.1	94.8	1.3	96.6	1.1	72.3	6.9	50.8	3.4	2.7	1.8	3.5	0.7	840,826.8		11.6	2.3
6-11	18.8	2.2	94.1	1.3	93.7	1.3	96.7	1.0	49.0	4.2	60.1	2.7	1.5	0.6	3.5	0.7	1,200,000.0		10.9	1.7
12+	12.3	2.3	95.4	1.4	93.7	1.6	95.9	1.4	29.8	3.0	80.4	3.4	1.9	1.1	2.7	0.8	1,400,000.0		15.9	2.5
Income Quintiles																				
Q1	17.0	3.3	97.5	1.5	94.0	2.3	97.4	1.5	75.6	13.3	46.2	4.9	0.3	0.3	3.3	0.7	525,553.5		13.5	3.1
Q2	23.6	3.6	95.3	1.4	95.4	1.4	95.7	1.3	69.8	7.5	46.5	4.0	0.4	0.4	3.6	0.8	626,907.3		12.6	2.4
Q3	19.7	3.0	94.0	1.7	93.1	2.1	97.8	1.2	53.6	6.5	63.2	4.0	3.0	2.2	3.8	0.9	926,288.0		12.5	2.7
Q4	21.7	3.6	94.0	2.1	91.8	2.1	96.2	1.6	49.9	5.6	60.3	4.0	2.2	1.0	3.6	0.8	1,700,000.0		9.5	2.3
Q5	11.9	2.3	95.3	1.5	95.1	1.6	95.8	1.5	30.7	3.8	85.0	3.0	2.4	1.2	2.6	0.8	1,400,000.0		14.5	2.5
Condition																				
Child-Visit	32.9	4.2	92.6	2.0	90.2	2.6	92.8	2.2	59.9	8.3	58.2	4.4	1.6	1.2	3.2	0.8	1,600,000.0		19.2	3.4
Fever	33.5	8.2	93.8	3.1	95.1	2.8	95.4	2.7	67.3	17.8	61.5	8.2	0.0	0.0	3.5	1.1	333,144.7		31.0	8.1
Childbirth	5.8	1.2	97.7	0.7	95.1	1.2	98.0	0.8	40.8	3.0	63.3	2.6	0.0	0.0	3.9	0.8	553,003.4		14.9	2.1
Arthritis	100.0	0.0	100.0	0.0	100.0	0.0	100.0	0.0	150.5	0.5	0.0	0.0	0.0	0.0	2.5	0.5	424,000.5	0.5	0.0	0.0
Asthma	28.5	9.9	87.0	6.2	86.9	6.2	90.8	5.1	28.5	5.2	78.0	8.6	0.0	0.0	2.5	1.1	281,573.6		15.2	6.8
Heart-Disease	19.3	8.8	100.0	0.0	100.0	0.0	97.3	2.8	58.6	14.9	61.8	12.6	4.5	4.4	4.0	1.7	328,317.3		9.6	7.7
Injury	34.4	7.0	98.7	1.3	95.6	2.8	98.6	1.4	89.9	21.7	73.7	6.3	0.0	0.0	2.9	0.8	1,500,000.0		5.8	2.6
Minor-Surgery	13.8	5.0	94.7	4.1	98.7	1.3	98.9	1.1	56.1	13.8	62.2	7.6	10.0	5.9	3.0	1.2	1,400,000.0		2.2	1.6
Other	25.9	2.7	92.5	1.5	92.0	1.6	94.4	1.5	54.4	4.6	64.5	2.9	2.7	1.0	2.8	0.7	1,800,000.0		11.1	1.8
Ownership																				
Government	21.1	1.8	94.9	0.9	92.9	1.1	95.6	1.0	58.5	4.2	58.8	2.2	1.0	0.4	4.1	0.7	750,335.4		15.7	1.6
Private	11.3	2.2	95.5	1.5	96.2	1.3	98.1	0.9	35.8	3.8	76.0	2.7	3.8	1.8	1.5	0.6	2,000,000.0		6.3	1.4
NGO	30.6	10.8	95.1	4.9	95.1	4.9	95.1	4.9	47.0	13.0	68.8	11.8	0.0	0.0	4.4	2.4	337,840.3		0.0	0.0
Other	4.9	5.1	100.0	0.0	100.0	0.0	100.0	0.0	43.9	16.9	78.6	12.3	0.0	0.0	2.0	1.1	839,188.6		17.8	11.5
Self-Assessed Health																				
Very-Good	11.1	1.8	95.2	1.5	94.7	1.6	98.1	1.0	43.1	4.6	66.2	2.9	0.2	0.2	2.9	0.7	794,181.6		13.4	2.2
Good	17.5	2.3	95.3	1.2	94.3	1.4	95.8	1.3	54.5	5.8	66.5	2.7	1.5	0.6	3.5	0.7	1,100,000.0		13.4	2.1
Moderate	26.7	3.1	94.4	1.5	92.8	1.7	95.4	1.4	55.1	4.8	59.1	3.7	4.8	2.2	3.4	0.8	1,600,000.0		10.7	2.2
Bad	24.7	9.4	95.7	3.0	93.1	4.0	95.7	3.0	60.2	18.9	58.9	10.7	0.0	0.0	4.3	1.5	1,100,000.0		8.4	5.3
Very-Bad	49.3	25.8	100.0	0.0	100.0	0.0	100.0	0.0	24.9	5.8	67.2	25.6	0.0	0.0	1.8	1.2	1,300,000.0		0.0	0.0
TOTAL	18.1	1.4	95.1	0.8	94.0	0.8	96.4	0.7	51.3	3.2	64.4	1.8	1.9	0.6	3.3	0.6	1,100,000.0		12.6	1.2

This table looks at various characteristics of a visit to a hospital inpatient care facility, for those who utilized such services in the past 3 years (Q7200, Q7201 and Q7402). Characteristics of a visit reported here include:

(1) The percent of patients who stayed 6 days or more at an inpatient facility during their last visit (Q7404).

(2) Patients' rating of *skills, equipment, and drug supplies* of the provider as "adequate": percent of patients who reported "Yes" to questions Q7405, Q7406 and Q7407, respectively.

(3) Barriers or facilitators to care access have been reported here for those who utilized inpatient care services in the last 3 years. They include:

(a) *Mean time taken to reach facility*: patient reported times from Q7408 were used to calculate averages across sample sub-groups.

(b) *Patients using private motor vehicles*: percent of patients who reported using a "private car or motorcycle" to get to the facility in Q7409.

(c) *Patients waiting more than a month to be admitted*: percent of patients who reported waiting more than a month to be admitted in Q7410.

(d) *Mean number of patients sleeping in same room*: averages across sample sub-groups have been constructed for numbers reported in Q7417.

(c) *Mean cost of visit*: patient reported costs in Q7411-Q7415 were summed up for an individual and then averaged across sample sub-groups.

(d) *Perceived discrimination*: percent of patients who reported "Yes" to any form of discrimination asked in Q7433-Q7439.

Results are reported for the total WHS sample (category: "TOTAL"), and by the following sample sub-groups: sex, area of residence, age group, years of education, income quintiles, reason for seeking care (condition), ownership (of health facility), and self-assessed health. Mean values and standard errors (SE) are reported for each category.

Sub-groups common to other tables were constructed in the same manner. Common sub-groups include sex (Q1001), area of residence (Q0104), age group (regrouping of reported age in Q1002), years of education (Q1010) and income quintiles. To determine income and subsequently income quintiles, an asset index was constructed for each household using responses to section 0700 on "Permanent Income Indicators" from the WHS household questionnaire.

Ownership, condition and self-assessed health sub-groups were constructed uniquely for the responsiveness section's tables. There are four categories of ownership: "Operated by the government" (Government), "Privately operated" (Private), "NGO" and "Other". To construct the ownership sub-group, information was combined from (a) Q7204, Q7205 and Q7301 for those utilizing ambulatory services, and (b) Q7200, Q7201 and Q7401 for those utilizing hospital inpatient services. The sub-group "Condition" used information from Q7403 ("Which of the following best describes the reason for your [child's] last overnight stay?"). The eight categories of Q7403 include high fever, diarrhoea, or cough; childbirth; arthritis; asthma; heart disease; bodily injury; minor surgery; and other. Self-assessed health was constructed using information from Q2000 ("In general, how would you rate your health today as?") in the WHS. Respondents were asked to select one of the following five categories: "Very good", "Good", "Moderate", "Bad" and "Very bad".

7.5.1 Patient assessment of responsiveness domains for hospital inpatient services: percent reporting "Moderate", "Bad" or "Very bad" - 1

	Prompt Attention				Dignity				Communication				Autonomy			
	Travel Time		Wait Time		Talked Respectfully		Privacy		Clear Explanation		Time for Questions		Treatment Information		Involvement	
	%	SE	%	SE	%	SE	%	SE	%	SE	%	SE	%	SE	%	SE
Sex																
Female	22.2	1.8	16.7	1.5	8.8	1.2	7.7	1.1	10.4	1.2	11.3	1.3	13.2	1.3	10.0	1.1
Male	28.3	3.1	20.8	2.7	8.5	2.0	7.5	1.5	11.8	2.3	12.9	2.2	16.0	2.6	15.2	2.7
Area of Residence																
Urban	18.6	1.9	17.5	1.8	8.7	1.4	8.2	1.3	11.1	1.5	11.9	1.6	15.1	1.6	11.2	1.5
Rural	31.9	2.5	18.3	1.9	8.6	1.6	6.9	1.3	10.4	1.5	11.6	1.5	12.4	1.6	11.8	1.8
Age Group																
18-29y	25.4	2.6	19.1	2.2	12.0	1.8	11.1	1.7	12.5	1.9	12.8	1.8	16.7	2.1	13.0	1.8
30-44y	24.1	2.4	20.3	2.2	8.0	1.7	6.3	1.3	11.2	1.9	12.3	1.8	14.3	2.0	10.3	1.9
45-59y	15.8	3.6	6.7	2.5	2.8	1.5	2.2	1.3	7.7	2.6	7.6	2.6	7.6	2.4	9.4	3.2
60-69y	36.4	8.6	26.6	8.6	5.8	3.5	6.9	3.7	3.6	2.6	13.7	5.5	13.7	5.5	8.2	4.2
70+y	17.7	5.3	7.9	3.5	3.0	2.3	3.0	2.3	8.7	3.9	7.0	3.7	5.7	2.9	13.9	4.7
Education Years																
0	34.6	8.8	9.6	3.8	1.5	1.1	0.9	0.9	6.9	4.4	4.7	3.8	1.5	1.1	14.6	9.5
1-5	26.1	3.0	15.4	2.4	7.9	1.8	7.4	1.7	8.3	1.7	12.5	2.1	14.5	2.2	13.5	2.1
6-11	27.5	2.3	20.6	2.1	9.2	1.6	7.6	1.4	11.5	1.6	14.0	1.8	15.4	2.0	8.8	1.4
12+	16.4	2.7	17.3	2.4	9.5	1.8	8.9	1.8	12.2	2.3	9.4	2.1	13.6	2.4	12.8	2.3
Income Quintiles																
Q1	28.1	3.7	13.1	2.5	3.3	1.2	5.3	1.5	8.1	2.2	11.4	3.0	12.9	2.6	13.4	3.8
Q2	34.4	3.8	19.5	3.0	13.2	2.7	10.0	2.3	11.4	2.4	13.9	2.4	14.8	2.7	11.1	2.1
Q3	25.5	3.2	22.5	3.3	11.9	2.7	7.2	1.9	9.5	2.0	13.7	2.7	13.6	2.6	11.6	2.3
Q4	23.3	3.8	21.1	3.6	7.5	1.9	10.5	2.5	12.9	2.6	13.2	2.9	17.5	3.2	11.5	2.4
Q5	16.1	2.7	14.1	2.3	7.3	1.7	5.9	1.7	11.1	2.3	8.8	2.0	12.2	2.3	10.7	2.2
Condition																
Child-Visit	27.1	3.6	25.1	3.6	12.1	3.1	9.6	2.3	10.4	2.4	11.5	2.5	13.0	2.8	12.8	2.9
Fever	18.5	5.7	22.7	6.3	12.0	4.9	7.0	3.5	11.2	4.3	5.2	3.0	7.1	3.5	10.9	4.4
Childbirth	21.4	2.2	18.1	2.1	11.4	1.8	10.1	1.7	10.9	1.7	11.5	1.8	13.8	1.8	10.4	1.6
Arthritis	0.0	0.0	0.0	0.0	0.0	0.0	0.0	0.0	0.0	0.0	0.0	0.0	0.0	0.0	0.0	0.0
Asthma	28.5	9.6	20.3	7.9	13.5	6.6	11.7	5.8	26.9	8.9	23.9	8.6	18.1	7.0	18.6	8.0
Heart-Disease	16.3	9.9	16.0	8.7	6.4	4.6	4.8	3.5	12.3	8.1	10.6	7.9	10.6	7.9	13.8	8.4
Injury	33.7	7.4	19.4	5.3	12.4	4.4	10.5	4.1	5.8	3.4	13.1	4.7	13.5	4.8	17.6	6.5
Minor-Surgery	25.0	6.5	13.1	4.5	4.4	2.6	5.1	2.6	5.2	2.7	3.8	2.3	5.7	2.7	8.6	4.0
Other	25.6	2.6	17.7	2.3	5.7	1.5	5.4	1.3	11.5	2.0	13.4	2.0	16.4	2.2	11.7	1.9
Ownership																
Government	27.8	2.0	23.5	1.9	12.1	1.5	10.5	1.3	12.5	1.4	15.6	1.6	17.2	1.6	14.0	1.5
Private	16.9	2.6	6.4	1.6	1.8	0.9	2.0	0.7	7.5	1.7	4.3	1.2	7.3	1.7	5.9	1.6
NGO	9.0	6.5	14.8	7.7	3.6	3.6	4.9	4.9	4.9	4.9	0.0	0.0	17.4	7.8	9.1	5.6
Other	4.9	5.1	0.0	0.0	0.0	0.0	0.0	0.0	8.3	8.4	0.0	0.0	0.0	0.0	15.4	14.5
Self-Assessed Health																
Very-Good	19.7	2.3	15.3	2.2	6.9	1.6	4.7	1.1	9.8	1.9	7.0	1.6	10.7	2.0	8.0	1.7
Good	20.6	2.5	16.4	2.1	8.2	1.6	8.6	1.6	9.3	1.7	12.7	1.8	14.5	2.0	12.8	2.0
Moderate	34.8	3.4	23.2	3.2	10.8	2.2	9.2	2.0	13.7	2.3	14.9	2.5	17.1	2.5	12.9	2.2
Bad	27.5	9.9	23.6	9.7	14.0	8.5	12.6	6.5	19.6	7.8	22.4	8.2	17.3	7.1	16.0	7.0
Very-Bad	29.4	24.2	0.0	0.0	29.4	24.2	0.0	0.0	0.0	0.0	0.0	0.0	0.0	0.0	0.0	0.0
TOTAL	23.9	1.5	17.9	1.3	8.7	1.0	7.7	0.9	10.8	1.1	11.8	1.1	14.0	1.2	11.4	1.1

The following table reports the percent of people perceiving poor responsiveness in hospital inpatient care facilities, where "poor" is defined as a rating of "Moderate", "Bad" or "Very bad" in questions Q7418-Q7432 which have 5 response options (including "good" and "very good".. Ratings for each of the eight domains of hospital inpatient care responsiveness (including 15 questions) by patients have been presented here. There are two questions each for seven of the eight domains; the domain of choice has only one question. The following questions from the survey have been used to determine patient assessment of each responsiveness domain:

- (1) *Prompt attention*: travel time (Q7418) and wait time (Q7419).
- (2) *Dignity*: talked respectfully (Q7420) and privacy (Q7421).
- (3) *Communication*: clear explanation (Q7422) and time for questions (Q7423).
- (4) *Autonomy*: treatment information (Q7424) and involvement (Q7425).
- (5) *Confidentiality*: talk privately (Q7426) and confidentiality of records (Q7427).
- (6) *Choice of health care provider*: Q7428.
- (7) *Basic amenities*: cleanliness (Q7429) and space (Q7430).
- (8) *Social support*: family visit (Q7431) and external contact (Q7432).

Results are reported for the total WHS sample (category: "TOTAL"), and by the following sample sub-groups: sex, area of residence, age group, years of education, income quintiles, reason for visit, ownership (of health facility), and self-assessed health. Mean values and standard errors (SE) are reported for each category.

Sub-groups common to other tables were constructed in the same manner. Common sub-groups include sex (Q1001), area of residence (Q0104), age group (regrouping of reported age in Q1002), years of education (Q1010) and income quintiles. To determine income and subsequently income quintiles, an asset index was constructed for each household using responses to section 0700 on "Permanent Income Indicators" from the WHS household questionnaire.

Ownership, condition and self-assessed health sub-groups were constructed uniquely for the responsiveness section's tables. There are four categories of ownership: "Operated by the government" (Government), "Privately operated" (Private), "NGO" and "Other". To construct the ownership sub-group, information was combined from (a) Q7204, Q7205 and Q7301 for those utilizing ambulatory services, and (b) Q7200, Q7201 and Q7401 for those utilizing hospital inpatient services. The sub-group "Condition" used information from Q7403 ("Which of the following best describes the reason for your [child's] last overnight stay?"). The eight categories of Q7403 include high fever, diarrhoea, or cough; childbirth; arthritis; asthma; heart disease; bodily injury; minor surgery; and other. Self-assessed health was constructed using information from Q2000 ("In general, how would you rate your health today as?") in the WHS. Respondents were asked to select one of the following five categories: "Very good", "Good", "Moderate", "Bad" and "Very bad".

7.5.2 Patient assessment of responsiveness domains for hospital inpatient services: percent reporting "Moderate", "Bad" or "Very bad" - 2

	Confidentiality				Choice of health care provider		Basic Amenities				Social Support			
	Talk Privately	Confidentiality of records					Cleanliness	Space			Family Visit	External Contact		
	%	SE	%	SE	%	SE	%	SE	%	SE	%	SE	%	SE
Sex														
Female	11.7	1.3	10.3	1.2	23.3	1.8	15.8	1.4	17.2	1.5	11.1	1.2	15.8	1.5
Male	11.8	2.1	12.8	2.2	21.9	3.1	16.8	2.6	19.2	2.7	11.7	2.3	21.5	3.2
Area of Residence														
Urban	12.0	1.6	9.8	1.4	24.2	2.1	16.4	1.9	16.7	1.9	12.1	1.5	17.7	1.8
Rural	11.3	1.4	12.8	1.6	21.0	2.2	15.7	1.6	19.4	1.9	10.1	1.5	16.9	2.2
Age Group														
18-29y	15.1	1.9	13.4	1.9	28.3	2.5	19.1	2.2	20.7	2.3	11.0	1.8	19.1	2.3
30-44y	9.9	1.6	10.8	1.7	23.3	2.4	18.5	2.0	20.1	2.1	15.6	2.0	19.3	2.2
45-59y	10.1	3.1	6.8	2.8	13.2	4.2	9.1	2.9	9.6	3.2	5.7	2.4	13.1	3.3
60-69y	4.3	3.2	5.9	3.6	7.0	3.8	2.8	2.0	5.1	3.0	2.8	2.0	5.1	3.0
70+y	9.4	4.0	8.2	3.8	14.8	4.9	4.7	3.0	9.4	3.9	4.7	3.0	11.9	4.4
Education Years														
0	11.8	6.4	13.4	6.1	15.3	9.4	6.7	3.0	8.4	3.2	5.3	2.8	6.7	3.2
1-5	14.6	2.4	14.7	2.5	25.1	3.0	13.6	2.2	18.4	2.7	9.1	2.0	13.3	2.1
6-11	10.3	1.5	9.9	1.5	22.7	2.2	17.2	2.1	19.1	2.2	11.0	1.6	20.0	2.1
12+	11.5	2.1	9.4	2.0	22.8	2.9	17.7	2.7	16.9	2.5	14.0	2.3	18.5	2.7
Income Quintiles														
Q1	9.3	2.0	15.8	3.1	27.1	4.6	12.0	2.7	13.8	2.5	6.8	2.1	13.2	3.7
Q2	13.9	2.7	16.5	2.9	24.2	3.4	17.0	2.5	21.1	3.1	14.1	2.7	18.9	2.9
Q3	11.5	2.3	7.3	1.9	25.3	3.4	16.5	2.6	17.5	2.8	8.8	2.0	19.0	3.1
Q4	13.4	2.6	10.4	2.3	21.9	3.8	18.3	3.2	23.7	3.5	12.5	2.6	19.4	3.2
Q5	10.8	2.2	8.6	2.0	20.0	2.8	15.8	2.6	14.0	2.6	12.0	2.2	16.0	2.5
Condition														
Child-Visit	7.4	2.0	12.6	2.8	23.0	3.9	17.8	3.3	23.1	3.9	14.0	3.4	20.4	3.7
Fever	11.9	4.7	11.8	4.8	31.9	8.6	23.4	6.8	27.6	8.1	17.2	7.2	20.0	7.5
Childbirth	13.3	1.8	11.5	1.8	25.8	2.5	17.8	2.2	18.0	2.1	13.1	1.9	18.3	2.2
Arthritis	0.0	0.0	0.0	0.0	0.0	0.0	0.0	0.0	0.0	0.0	0.0	0.0	0.0	0.0
Asthma	6.7	4.7	10.1	5.7	8.2	4.7	24.1	9.0	25.0	9.2	14.3	7.9	21.4	9.0
Heart-Disease	7.8	7.5	8.1	7.8	21.5	9.8	12.6	8.2	23.0	10.4	9.6	7.7	7.8	7.5
Injury	15.0	5.7	14.3	5.8	33.3	7.7	7.4	3.1	15.8	5.0	10.8	4.2	19.4	5.7
Minor-Surgery	10.9	5.0	3.1	2.2	13.2	4.8	16.1	5.7	14.3	5.6	9.9	4.6	13.7	5.6
Other	10.4	1.6	11.6	1.8	20.3	2.5	14.5	2.1	16.8	2.2	9.1	1.5	16.8	2.2
Ownership														
Government	15.1	1.6	15.0	1.6	29.3	2.0	21.9	1.8	24.5	1.9	14.9	1.5	22.7	1.9
Private	4.1	1.3	2.7	0.8	8.1	1.8	4.6	1.3	4.3	1.2	4.0	1.2	6.3	1.6
NGO	23.2	10.2	10.2	7.2	22.8	11.8	0.0	0.0	4.9	4.9	5.9	5.3	10.8	6.8
Other	0.0	0.0	0.0	0.0	60.9	19.0	8.3	8.4	0.0	0.0	0.0	0.0	14.1	11.2
Self-Assessed Health														
Very-Good	8.5	1.7	7.0	1.7	20.3	2.6	11.5	1.9	12.0	1.9	8.5	1.8	11.3	2.0
Good	12.7	1.9	13.0	2.0	23.8	2.6	19.6	2.3	21.8	2.3	12.3	1.8	20.4	2.4
Moderate	13.8	2.1	11.8	2.0	21.0	2.7	16.5	2.5	19.4	2.7	13.4	2.3	19.0	2.5
Bad	16.0	7.1	17.1	7.2	50.9	10.6	11.0	5.3	7.5	4.0	9.0	5.5	25.4	10.0
Very-Bad	0.0	0.0	0.0	0.0	29.4	24.2	0.0	0.0	0.0	0.0	0.0	0.0	0.0	0.0
TOTAL	11.8	1.1	11.0	1.1	22.9	1.6	16.1	1.3	17.8	1.4	11.3	1.1	17.4	1.4

The following table reports the percent of people perceiving poor responsiveness in hospital inpatient care facilities, where "poor" is defined as a rating of "Moderate", "Bad" or "Very bad" in questions Q7418-Q7432 which have 5 response options (including "good" and "very good".. Ratings for each of the eight domains of hospital inpatient care responsiveness (including 15 questions) by patients have been presented here. There are two questions each for seven of the eight domains; the domain of choice has only one question. The following questions from the survey have been used to determine patient assessment of each responsiveness domain:

- (1) *Prompt attention*: travel time (Q7418) and wait time (Q7419).
- (2) *Dignity*: talked respectfully (Q7420) and privacy (Q7421).
- (3) *Communication*: clear explanation (Q7422) and time for questions (Q7423).
- (4) *Autonomy*: treatment information (Q7424) and involvement (Q7425).
- (5) *Confidentiality*: talk privately (Q7426) and confidentiality of records (Q7427).
- (6) *Choice of health care provider*: Q7428.
- (7) *Basic amenities*: cleanliness (Q7429) and space (Q7430).
- (8) *Social support*: family visit (Q7431) and external contact (Q7432).

Results are reported for the total WHS sample (category: "TOTAL"), and by the following sample sub-groups: sex, area of residence, age group, years of education, income quintiles, reason for visit, ownership (of health facility), and self-assessed health. Mean values and standard errors (SE) are reported for each category.

Sub-groups common to other tables were constructed in the same manner. Common sub-groups include sex (Q1001), area of residence (Q0104), age group (regrouping of reported age in Q1002), years of education (Q1010) and income quintiles. To determine income and subsequently income quintiles, an asset index was constructed for each household using responses to section 0700 on "Permanent Income Indicators" from the WHS household questionnaire.

Ownership, condition and self-assessed health sub-groups were constructed uniquely for the responsiveness section's tables. There are four categories of ownership: "Operated by the government" (Government), "Privately operated" (Private), "NGO" and "Other". To construct the ownership sub-group, information was combined from (a) Q7204, Q7205 and Q7301 for those utilizing ambulatory services, and (b) Q7200, Q7201 and Q7401 for those utilizing hospital inpatient services. The sub-group "Condition" used information from Q7403 ("Which of the following best describes the reason for your [child's] last overnight stay?"). The eight categories of Q7403 include high fever, diarrhoea, or cough; childbirth; arthritis; asthma; heart disease; bodily injury; minor surgery; and other. Self-assessed health was constructed using information from Q2000 ("In general, how would you rate your health today as?") in the WHS. Respondents were asked to select one of the following five categories: "Very good", "Good", "Moderate", "Bad" and "Very bad".

7.6 Importance of different domains of responsiveness: percent reporting "Extremely Important"

	Prompt Attention		Dignity		Communication		Autonomy		Confidentiality		Choice		Basic Amenities		Social Support	
	%	SE	%	SE	%	SE	%	SE	%	SE	%	SE	%	SE	%	SE
Sex																
Female	37.1	1.1	37.7	1.2	40.2	1.2	28.9	1.1	35.4	1.2	30.2	1.1	43.4	1.2	33.8	1.2
Male	37.1	1.3	32.6	1.2	37.1	1.3	26.5	1.2	29.6	1.3	27.1	1.2	40.8	1.4	30.8	1.3
Area of Residence																
Urban	37.6	1.3	37.3	1.3	39.6	1.4	28.7	1.3	36.2	1.4	30.0	1.2	44.6	1.4	30.8	1.3
Rural	36.5	1.2	33.1	1.1	37.8	1.2	26.7	1.2	28.7	1.2	27.4	1.2	39.5	1.2	34.3	1.2
Age Group																
18-29y	36.9	1.5	35.2	1.4	41.1	1.5	29.8	1.6	35.6	1.6	28.9	1.5	44.5	1.6	33.9	1.5
30-44y	36.4	1.4	35.2	1.4	37.9	1.4	27.1	1.3	31.6	1.3	28.7	1.3	41.6	1.4	31.8	1.3
45-59y	39.8	1.8	37.1	1.8	39.0	1.9	27.8	1.6	30.8	1.8	28.8	1.7	40.9	1.8	30.9	1.7
60-69y	33.6	2.7	30.6	2.8	32.6	2.9	21.8	2.6	28.3	2.8	27.5	2.8	38.1	2.9	29.8	2.8
70+y	37.3	3.2	36.8	3.2	35.7	3.2	26.1	3.0	32.6	3.2	30.3	3.2	41.1	3.2	35.6	3.2
Education Years																
0	35.0	3.8	25.8	3.8	33.3	4.0	21.4	3.4	24.1	3.7	24.8	3.8	31.5	3.7	28.5	3.5
1-5	36.4	1.4	33.3	1.4	36.2	1.5	24.6	1.3	27.4	1.3	27.8	1.3	38.4	1.3	32.9	1.4
6-11	34.3	1.4	32.8	1.3	34.2	1.3	27.2	1.3	30.4	1.3	26.9	1.2	38.2	1.4	30.0	1.3
12+	42.3	1.8	42.7	1.6	48.9	1.8	32.8	1.8	43.0	1.8	33.2	1.6	53.8	1.8	36.1	1.7
Income Quintiles																
Q1	31.7	1.8	29.8	1.7	31.6	1.8	22.3	1.6	24.4	1.6	24.0	1.7	31.9	1.8	29.4	1.8
Q2	41.0	2.0	34.7	1.9	38.5	1.9	27.8	1.9	31.5	1.9	30.5	1.9	41.1	2.0	35.4	1.9
Q3	33.8	1.8	31.4	1.8	35.7	1.9	27.9	1.8	29.0	1.8	26.1	1.7	37.7	1.9	30.2	1.8
Q4	36.8	1.7	34.4	1.7	38.3	2.0	26.1	1.6	31.4	1.8	28.0	1.7	44.2	1.8	32.3	1.8
Q5	40.2	1.8	42.5	1.8	45.3	1.9	32.2	1.8	41.5	1.9	33.0	1.7	50.6	1.9	34.0	1.7
Ownership																
Government	37.3	1.3	35.4	1.4	37.5	1.4	30.1	1.4	32.3	1.3	29.8	1.3	42.5	1.4	31.8	1.3
Private	37.6	1.6	39.1	1.5	42.6	1.5	28.7	1.4	37.4	1.6	30.9	1.4	45.2	1.6	34.4	1.5
NGO	38.4	7.7	37.4	7.7	44.8	7.8	23.6	7.6	43.5	7.4	27.9	7.3	41.0	8.4	34.1	7.4
Other	32.4	5.7	26.6	5.0	39.6	5.8	19.5	4.7	26.9	5.3	20.9	4.7	36.1	5.6	36.6	5.7
Self-Assessed Health																
Very-Good	41.3	1.6	39.2	1.4	42.8	1.5	31.2	1.4	35.6	1.5	32.2	1.5	46.8	1.5	36.5	1.5
Good	34.7	1.3	33.4	1.3	36.7	1.3	27.1	1.4	32.5	1.4	28.2	1.3	39.7	1.4	29.9	1.3
Moderate	35.2	1.6	33.5	1.7	36.3	1.7	23.9	1.5	29.4	1.6	25.1	1.5	39.4	1.7	30.8	1.6
Bad	37.7	5.2	31.3	4.7	42.2	5.2	30.5	5.0	29.0	4.8	30.5	5.0	46.6	5.3	34.5	5.1
Very-Bad	46.0	15.8	41.1	15.5	29.7	14.5	22.6	14.1	41.1	15.5	33.9	15.1	55.2	15.4	29.7	14.5
Type of Care																
Ambulatory-Adult	38.4	1.3	38.6	1.2	41.9	1.3	29.2	1.2	35.8	1.3	31.2	1.2	45.9	1.3	34.5	1.3
Ambulatory-Child	38.5	2.2	38.5	2.2	42.2	2.2	31.9	2.2	36.3	2.2	30.7	2.1	44.6	2.2	33.9	2.2
Inpatient-Adult	40.3	5.5	36.6	5.1	37.7	5.2	28.5	4.6	36.2	5.6	29.3	4.9	43.8	5.3	38.3	5.2
Inpatient-Child	46.3	9.9	40.3	9.8	44.2	9.9	27.1	8.9	34.7	9.7	39.5	9.8	51.1	9.9	33.3	9.6
Non-Users	34.6	1.4	30.0	1.3	33.5	1.4	24.4	1.3	27.3	1.3	24.9	1.3	36.5	1.4	29.0	1.3
TOTAL	37.1	0.9	35.4	0.9	38.7	0.9	27.7	0.9	32.7	0.9	28.8	0.8	42.2	0.9	32.4	0.9

This table shows the percent of people who rated a responsiveness domain as "Extremely Important". All survey respondents were queried on their perception of the importance of each of the eight responsiveness domains in section 7100 of the WHS where each domain was described in detail (Q7100-Q7107).

Respondents were asked to say whether the domain was "Extremely Important", "Very Important", "Moderately Important", "Slightly Important" or "Not

Important".

Results are reported for the total WHS sample (category: "TOTAL"), and by the following sample sub-groups: sex, area of residence, age group, years of education, income quintiles, ownership (of health facility), self-assessed health, and type of care. Mean values and standard errors (SE) are reported for each category.

Sub-groups common to other tables were constructed in the same manner. Common sub-groups include sex (Q1001), area of residence (Q0104), age group (regrouping of reported age in Q1002), years of education (Q1010) and income quintiles. To determine income and subsequently income quintiles, an asset index was constructed for each household using responses to section 0700 on "Permanent Income Indicators" from the WHS household questionnaire.

Ownership, self-assessed health and type of care sub-groups were constructed uniquely for the responsiveness section's tables. There are four categories of ownership: "Operated by the government" (Government), "Privately operated" (Private), "NGO" and "Other". To construct the ownership sub-group, information was combined from (a) Q7204, Q7205 and Q7301 for those utilizing ambulatory services, and (b) Q7200, Q7201 and Q7401 for those utilizing hospital inpatient services. Self-assessed health was constructed using information from Q2000 ("In general, how would you rate your health today as?") in the WHS. Respondents were asked to select one of the following five categories: "Very good", "Good", "Moderate", "Bad" and "Very bad". Type of care is a constructed sample sub-group combining information from Q7000, Q7001 and Q7016. There are five categories of type of care: "Ambulatory adult", "Ambulatory child", "Inpatient adult", "Inpatient child" and "Non users".

8.0 Expenditure Background Indicators (2002)

GDP per capita (\$)	975
Total health expenditure per capita (\$)	82
Total population (000)	5,740
Life expectancy at birth (Both sexes)	71.7
Life expectancy at birth (male)	68.7
Life expectancy at birth (female)	74.7
Healthy life expectancy at birth (Both sexes)	61.9
Healthy life expectancy at birth (Male)	59.6
Healthy life expectancy at birth (Female)	64.2
Government funded health expenditure as a percentage of total health expenditure	38.1
Social security funded health expenditure as a percentage of total health expenditure	11.5
Private health insurance premiums as a percentage of total health expenditure	7.1
Out-of-pocket payment as a percentage of total health expenditure	54.9

8.1 Distribution of health payments across different population groups

	Mean Household expenditure (EXP) in local currency	% Poor	% Impoverished	% Catastrophic	OOP % EXP	OOP % non-subsistence spending	Mean OOP in local currency
Catastrophic							
No	1,052,109	26.7	0.8		4.0	7.6	59620
Yes	926,712	36.7	21.0		30.6	66.7	379857
Poor							
No	1,307,585		5.7	14.4	9.3	16.2	148281
Yes	334,454		0.0	21.2	6.0	19.9	20187
Insurance							
No	791,158	36.3	4.8	18.5	8.3	18.7	88366
Yes	1,597,704	9.6	2.4	11.2	8.6	13.9	167487
Residence							
rural	699,009	45.1	5.9	23.0	8.7	21.7	82427
urban	1,297,205	15.0	2.7	11.1	8.1	13.7	135532
Income_Quintile							
1st(poorest)	281,087	100.0	0.0	22.6	6.1	20.5	17472
2nd	531,036	41.7	12.3	18.7	6.1	18.5	32689
3rd	733,537	0.0	4.6	14.5	7.2	15.6	55038
4th	1,076,462	0.0	2.1	10.9	9.0	14.7	97382
5th(richest)	2,537,693	0.0	1.4	15.0	13.5	17.0	357441
total	1,031,616	28.4	4.1	16.3	8.4	17.2	111955

OOP: Out of pocket

Household consumption expenditure (EXP) comprises both monetary and in-kind payment on all goods and services and the money value of the consumption of home-made products.

Poor - a household is considered poor when its total household expenditure is smaller than its subsistence spending
Impoverishment - a non-poor household is impoverished by health payment when it becomes poor after paying for health services.

Catastrophic health expenditure occurs when a household's total out-of-pocket health payments equals or exceeds 40% of the households capacity to pay or non-subsistence spending.

Out of pocket health payments (OOP) refer to payments made by households at the point they receive health services. It includes doctor's consultation fees, purchases of medication and hospital bills. Spending on alternative and/or traditional medicine is included. Expenditure on health related transportation and special nutrition is excluded. Insurance reimbursements are also excluded.

Subsistence spending - household subsistence spending is the minimum requirement to maintain a basic life in a society. A poverty line is used in the analysis as subsistence spending.

Food expenditure is the amount spent on all foodstuffs by the household plus the value of the family's own food production consumed within the household. It excludes expenditure on alcoholic beverages, tobacco and food consumption outside the home (e.g hotel and restaurants).

Household capacity to pay - is defined as a household's non-subsistence spending.

8.2 Percent distribution of structure of out-of-pocket health payments

	Inpatient	Outpatient	Traditional	Drugs	Other	Total
Catastrophic						
No	2.4	6.0	1.2	62.8	27.6	100
Yes	20.0	7.1	0.7	52.2	19.9	100
Poor						
No	12.6	6.4	0.8	56.4	23.7	100
Yes	4.0	9.7	3.4	66.3	16.6	100
Insurance						
No	14.6	6.5	1.1	55.7	22.1	100
Yes	9.2	6.7	0.7	58.4	24.9	100
Residence						
rural	13.7	6.9	1.6	58.8	18.9	100
urban	11.4	6.4	0.6	56.0	25.5	100
Income_Quintile						
1st(poorest)	6.0	10.5	3.4	62.6	17.5	100
2nd	2.8	8.1	3.3	66.8	19.0	100
3rd	5.0	8.1	1.7	64.3	20.9	100
4th	5.4	7.4	1.5	66.4	19.3	100
5th(richest)	16.3	5.8	0.4	52.0	25.5	100
total	12.2	6.6	0.9	56.9	23.3	100

8.3 Financial sources used by households for paying for health services

	Savings	Sold Items	Borrow from relatives &	Borrow from others	Health insurance	Current Income	Other
OOP%non_subsistence_spending							
less than 10%	6.0	7.9	13.6	3.8	16.6	78.7	1.8
10-20%	10.6	9.9	16.1	7.1	18.7	93.5	3.6
20-40%	10.5	13.3	18.7	7.5	13.4	92.7	3.2
above 40%	10.2	17.5	23.8	8.2	10.0	88.0	2.9
Hospitalization							
No	5.8	8.4	12.6	3.2	13.7	83.5	1.3
Yes	15.8	18.1	30.2	13.9	21.7	84.7	6.5
Insurance							
No	5.9	12.9	16.7	5.4	0.9	83.3	2.0
Yes	12.4	4.7	15.1	5.4	49.4	85.0	3.1
Residence							
rural	4.9	17.4	14.5	5.6	4.4	83.1	2.0
urban	10.1	4.8	17.6	5.3	24.0	84.3	2.7
Income_Quintile							
1st(poorest)	3.1	13.2	15.3	4.0	3.8	77.7	2.0
2nd	4.5	12.9	16.6	5.6	6.1	83.1	1.9
3rd	5.5	11.0	16.7	5.7	13.3	83.8	2.5
4th	10.1	9.6	17.0	5.9	18.2	85.7	2.4
5th(richest)	15.9	5.3	15.5	5.8	35.2	88.6	3.0
total	7.8	10.4	16.2	5.4	15.3	83.8	2.4

8.4 Insurance Coverage

	Insured	SE	Mandatory Insurance	SE	Voluntary Insurance	SE	Insured as dependent	SE	Mandatory and Voluntary	SE
Q1(poorest)	1.0	0.2	1.3	0.3	0.3	0.1	1.1	0.3	0.3	0.3
Q2	3.8	0.6	4.8	0.9	1.5	0.5	3.5	0.6	1.3	0.9
Q3	10.5	1.0	12.9	1.3	5.1	1.2	10.7	1.2	4.5	2.1
Q4	24.3	1.6	27.8	1.8	15.9	2.0	24.9	1.8	13.3	3.2
Q5(richest)	60.5	2.1	53.1	2.4	77.3	2.5	59.8	2.2	80.6	3.9
Total	100		100		100		100		100	
Number	4,920.0		3,334.0		2,115.0		3,110.0		535.0	

10.1 Inability to control the important things in life - q8000

	Never	SE	Almost never	SE	Sometimes	SE	Fairly often	SE	Very often	SE	Missing	SE	N
Gender													
Male	51.6	1.4	12.7	0.9	28.8	1.1	4.5	0.5	1.6	0.3	0.8	0.2	2,545
Female	42.3	1.2	12.0	0.8	35.3	1.1	7.6	0.7	2.5	0.4	0.4	0.1	2,586
M	0.0	0.0	0.0	0.0	0.0	0.0	0.0	0.0	0.0	0.0	0.0	0.0	
Residence													
Urban	45.4	1.4	14.4	1.0	31.3	1.1	6.1	0.6	2.4	0.4	0.5	0.2	2,906
Rural	48.9	1.2	9.6	0.7	33.1	1.1	6.0	0.6	1.6	0.3	0.8	0.3	2,225
M	0.0	0.0	0.0	0.0	0.0	0.0	0.0	0.0	0.0	0.0	0.0	0.0	
Income													
Q1(poorest)	49.9	1.8	7.5	0.9	32.8	1.7	7.7	1.1	1.8	0.5	0.4	0.2	711
Q2	49.6	2.1	8.0	1.1	33.8	1.9	5.7	0.9	2.0	0.5	0.8	0.4	877
Q3	46.2	1.9	12.6	1.3	33.5	1.7	4.7	1.0	2.2	0.5	0.7	0.3	933
Q4	46.1	1.9	10.1	1.0	35.1	1.7	5.7	0.8	2.0	0.6	1.1	0.4	1,137
Q5(richest)	44.7	2.0	19.1	1.6	27.4	1.7	6.6	0.9	2.0	0.6	0.3	0.2	1,442
M	59.4	8.8	0.0	0.0	31.6	8.1	6.9	5.7	2.1	2.1	0.0	0.0	31
Age													
18-29	45.6	1.6	12.4	1.0	34.3	1.4	5.7	0.7	1.7	0.4	0.2	0.1	1,986
30-44	45.3	1.5	12.8	1.1	32.3	1.4	6.0	0.7	2.7	0.4	1.0	0.3	1,676
45-59	51.3	1.9	11.9	1.4	29.3	1.7	5.7	0.8	1.3	0.5	0.4	0.2	951
60-69	50.8	3.0	12.5	2.1	27.1	2.6	6.3	1.6	1.9	0.8	1.5	0.8	311
70-79	46.4	3.7	10.4	2.5	28.2	3.2	10.4	2.1	3.5	1.3	1.0	0.7	152
80+	47.5	7.7	6.1	4.3	30.9	6.9	13.5	4.9	0.3	0.3	1.7	1.0	55
M	0.0	0.0	0.0	0.0	0.0	0.0	0.0	0.0	0.0	0.0	0.0	0.0	
All	46.9	1.0	12.3	0.6	32.1	0.8	6.1	0.4	2.0	0.2	0.6	0.2	5,131

10.2 Inability to cope - q8001

	Never	SE	Almost never	SE	Sometimes	SE	Fairly often	SE	Very often	SE	Missing	SE	N
Gender													
Male	45.7	1.3	13.5	0.9	35.6	1.3	3.0	0.4	1.4	0.3	0.8	0.2	2,545
Female	35.2	1.2	13.7	0.9	42.9	1.2	5.7	0.5	2.1	0.3	0.4	0.1	2,586
M	0.0	0.0	0.0	0.0	0.0	0.0	0.0	0.0	0.0	0.0	0.0	0.0	
Residence													
Urban	37.7	1.3	15.8	1.0	39.8	1.2	4.5	0.5	1.8	0.3	0.5	0.2	2,906
Rural	44.0	1.2	10.6	0.7	38.6	1.1	4.3	0.5	1.7	0.3	0.8	0.3	2,225
M	0.0	0.0	0.0	0.0	0.0	0.0	0.0	0.0	0.0	0.0	0.0	0.0	
Income													
Q1(poorest)	46.6	1.8	7.2	0.8	38.5	1.8	5.4	0.9	1.9	0.5	0.4	0.2	711
Q2	43.6	2.1	9.2	1.1	40.3	1.9	4.6	0.8	1.6	0.4	0.8	0.4	877
Q3	41.1	1.8	12.5	1.4	38.7	1.8	4.7	0.9	2.3	0.6	0.7	0.3	933
Q4	37.2	1.9	14.2	1.3	41.2	1.8	4.5	0.7	1.9	0.4	1.1	0.4	1,137
Q5(richest)	37.2	1.8	19.9	1.6	38.0	1.8	3.5	0.6	1.1	0.3	0.3	0.2	1,442
M	55.3	9.0	0.0	0.0	35.2	8.6	4.1	2.8	5.3	5.1	0.0	0.0	31
Age													
18-29	38.7	1.5	15.3	1.1	40.4	1.4	4.3	0.6	1.0	0.2	0.2	0.1	1,986
30-44	39.5	1.5	14.3	1.0	38.9	1.4	4.4	0.5	1.9	0.4	1.0	0.3	1,676
45-59	43.9	1.9	11.2	1.2	38.6	1.9	4.4	0.7	1.5	0.4	0.4	0.2	951
60-69	48.4	3.1	6.9	1.6	36.5	3.0	3.0	0.8	3.7	1.1	1.5	0.8	311
70-79	39.7	3.6	11.0	2.6	37.1	3.4	7.4	2.0	3.8	1.3	1.0	0.7	152
80+	27.1	5.6	12.9	6.2	42.3	7.6	7.2	3.4	8.8	5.6	1.7	1.0	55
M	0.0	0.0	0.0	0.0	0.0	0.0	0.0	0.0	0.0	0.0	0.0	0.0	
All	40.4	0.9	13.6	0.6	39.3	0.8	4.4	0.3	1.7	0.2	0.6	0.2	5,131

10.3 Satisfaction with your health - q8002

	Very dissatisfied	SE	Dissatisfied	SE	Neither satisfied nor dissatisfied	SE	Satisfied	SE	Very Satisfied	SE	Missing	SE	N
Gender													
Male	2.4	0.4	3.5	0.4	11.7	0.8	47.8	1.2	33.7	1.1	0.9	0.2	2,545
Female	1.9	0.3	6.2	0.5	18.3	0.9	48.1	1.2	25.2	1.0	0.3	0.1	2,586
M	0.0	0.0	0.0	0.0	0.0	0.0	0.0	0.0	0.0	0.0	0.0	0.0	
Residence													
Urban	2.0	0.4	4.7	0.5	11.6	0.8	49.4	1.3	31.9	1.2	0.5	0.1	2,906
Rural	2.3	0.4	5.1	0.5	19.6	1.0	46.1	1.2	26.1	1.0	0.8	0.3	2,225
M	0.0	0.0	0.0	0.0	0.0	0.0	0.0	0.0	0.0	0.0	0.0	0.0	
Income													
Q1(poorest)	3.1	0.7	5.8	0.9	22.3	1.5	43.3	2.1	25.0	1.6	0.5	0.3	711
Q2	2.1	0.6	4.0	0.6	20.7	1.5	47.4	1.9	24.9	1.6	0.8	0.4	877
Q3	2.7	0.7	5.3	0.8	13.1	1.3	46.7	2.0	31.6	1.9	0.6	0.2	933
Q4	1.5	0.4	6.1	0.9	13.7	1.2	49.7	1.8	28.0	1.7	0.9	0.4	1,137
Q5(richest)	1.8	0.5	3.4	0.6	10.3	1.0	50.1	1.8	34.1	1.8	0.3	0.2	1,442
M	0.0	0.0	10.5	5.4	17.5	7.3	51.1	9.1	20.9	8.0	0.0	0.0	31
Age													
18-29	2.2	0.5	2.9	0.5	11.2	1.0	51.9	1.5	31.5	1.4	0.2	0.1	1,986
30-44	1.7	0.4	5.8	0.7	16.1	1.0	46.0	1.4	29.5	1.4	0.9	0.3	1,676
45-59	1.8	0.5	6.2	0.9	19.1	1.4	43.5	1.8	28.9	1.8	0.5	0.2	951
60-69	3.5	1.1	5.2	1.3	19.9	2.3	47.6	3.0	22.8	2.4	1.0	0.6	311
70-79	1.9	1.0	8.6	1.9	17.5	3.0	49.7	3.8	21.2	3.2	1.0	0.7	152
80+	8.2	5.1	11.8	6.2	17.1	5.6	41.8	7.2	19.4	6.7	1.7	1.0	55
M	0.0	0.0	0.0	0.0	0.0	0.0	0.0	0.0	0.0	0.0	0.0	0.0	
All	2.1	0.3	4.8	0.4	15.1	0.6	48.0	0.9	29.4	0.8	0.6	0.1	5,131

10.4 Feeling safe when alone at home - q8011

	Completely safe	SE	Very safe	SE	Moderately safe	SE	Slightly safe	SE	Not safe at all	SE	Missing	SE	N
Gender													
Male	10.0	0.8	14.6	0.9	25.5	1.2	22.4	1.0	26.7	1.1	0.8	0.2	2,545
Female	8.1	0.7	13.3	0.8	22.3	1.0	23.5	1.0	32.3	1.1	0.5	0.2	2,586
M	0.0	0.0	0.0	0.0	0.0	0.0	0.0	0.0	0.0	0.0	0.0	0.0	
Residence													
Urban	6.8	0.7	12.5	0.8	25.4	1.1	23.7	1.1	30.9	1.2	0.6	0.2	2,906
Rural	12.0	1.0	15.7	0.9	21.9	1.1	22.0	1.0	27.6	1.1	0.8	0.3	2,225
M	0.0	0.0	0.0	0.0	0.0	0.0	0.0	0.0	0.0	0.0	0.0	0.0	
Income													
Q1(poorest)	14.1	1.5	19.4	1.6	18.4	1.5	22.2	1.6	25.5	1.6	0.4	0.2	711
Q2	9.8	1.2	17.4	1.4	19.6	1.6	20.3	1.6	31.8	1.7	1.0	0.4	877
Q3	9.4	1.4	15.3	1.4	25.0	1.9	22.5	1.6	27.1	1.6	0.6	0.2	933
Q4	8.8	1.2	12.1	1.2	22.6	1.5	23.9	1.5	31.5	1.7	1.2	0.5	1,137
Q5(richest)	6.1	0.9	9.6	1.1	29.5	1.9	24.1	1.6	30.3	1.8	0.3	0.2	1,442
M	8.5	5.4	14.4	5.9	19.3	7.6	40.3	9.0	17.5	7.4	0.0	0.0	31
Age													
18-29	9.1	0.9	13.9	1.0	26.3	1.3	24.0	1.2	26.4	1.3	0.3	0.2	1,986
30-44	7.3	0.8	12.2	0.9	24.2	1.3	24.1	1.3	31.3	1.4	0.9	0.3	1,676
45-59	10.5	1.2	13.4	1.2	19.5	1.5	21.8	1.7	34.0	1.9	0.7	0.3	951
60-69	11.6	1.8	20.6	2.5	22.0	2.6	19.3	2.2	25.6	2.4	1.0	0.6	311
70-79	12.6	2.4	18.7	2.6	20.7	2.9	16.2	2.9	30.9	3.6	1.0	0.7	152
80+	11.3	5.2	25.2	7.1	23.8	6.6	12.5	4.4	25.6	6.6	1.7	1.0	55
M	0.0	0.0	0.0	0.0	0.0	0.0	0.0	0.0	0.0	0.0	0.0	0.0	
All	9.1	0.6	13.9	0.6	23.9	0.8	23.0	0.8	29.5	0.8	0.7	0.2	5,131

10.5 Feeling safe when walking down the street alone after dark - q8012

	Completely safe	SE	Very safe	SE	Moderately safe	SE	Slightly safe	SE	Not safe at all	SE	Missing	SE	N
Gender													
Male	5.3	0.6	9.4	0.7	16.8	1.0	22.9	1.0	44.7	1.3	0.9	0.3	2,545
Female	3.8	0.4	5.8	0.5	10.8	0.7	20.5	1.0	58.1	1.2	1.0	0.2	2,586
M	0.0	0.0	0.0	0.0	0.0	0.0	0.0	0.0	0.0	0.0	0.0	0.0	
Residence													
Urban	3.0	0.4	5.9	0.5	14.4	0.9	22.2	1.0	53.7	1.3	0.8	0.2	2,906
Rural	6.6	0.7	9.8	0.7	13.0	0.9	21.1	1.0	48.4	1.3	1.2	0.3	2,225
M	0.0	0.0	0.0	0.0	0.0	0.0	0.0	0.0	0.0	0.0	0.0	0.0	
Income													
Q1(poorest)	8.1	1.1	14.5	1.4	12.4	1.2	19.5	1.6	44.6	2.0	0.8	0.3	711
Q2	5.3	0.9	10.3	1.1	10.9	1.2	20.6	1.6	51.6	2.0	1.3	0.5	877
Q3	5.0	0.9	7.5	1.0	16.3	1.6	20.4	1.5	49.6	2.0	1.2	0.4	933
Q4	3.5	0.6	6.3	0.9	14.2	1.4	21.3	1.6	53.5	1.8	1.4	0.5	1,137
Q5(richest)	2.9	0.6	3.7	0.7	14.4	1.4	24.2	1.5	54.5	1.8	0.4	0.2	1,442
M	3.6	2.6	2.5	2.5	8.8	6.2	42.2	10.7	41.7	10.1	1.2	1.2	31
Age													
18-29	4.1	0.6	7.5	0.8	14.3	1.0	23.4	1.2	50.3	1.5	0.4	0.2	1,986
30-44	4.0	0.6	5.5	0.6	14.1	1.1	22.5	1.3	52.9	1.5	1.0	0.4	1,676
45-59	5.2	0.8	8.8	1.0	12.8	1.3	19.6	1.5	52.7	2.0	0.9	0.4	951
60-69	6.1	1.4	13.0	1.8	15.4	2.3	19.1	2.4	44.6	3.0	1.7	0.8	311
70-79	6.1	1.8	11.1	2.1	10.3	2.3	13.7	2.5	54.1	3.8	4.7	1.6	152
80+	9.1	5.1	13.3	5.9	6.2	3.6	10.1	4.0	56.0	7.6	5.2	2.3	55
M	0.0	0.0	0.0	0.0	0.0	0.0	0.0	0.0	0.0	0.0	0.0	0.0	
All	4.5	0.4	7.6	0.4	13.8	0.6	21.7	0.7	51.4	0.9	1.0	0.2	5,131