

REPORT OF MALAWI

TABLE OF CONTENTS

1	Introduction
2	Methodology
2.1	Sampling
2.2.1	Geographic Component of the Survey
2.2.2	The map
2.3	Survey Metrics
2.3.1	Sample deviation index
2.3.2	HH Sample deviation index
2.3.3	Response rate
2.3.4	Missing data
2.3.5	Reliability
3	Socio-Demographic Profile
3.1	Household composition by residence and age groups according to income quintile
3.2	Selected age distributions by income quintile
3.3	Characteristics of head of household by income quintile
3.4	Household population: percent distribution of the de jure population by age, residence, marital status and education according to sex
3.5	Background characteristics of respondents: percent distribution of men and women by age, residence, marital status and education
4	Risk Factors
4.1	Prevalence of smoking and average daily tobacco consumption
4.2	Prevalence of life time abstainers, non-heavy drinkers, infrequent heavy drinkers and frequent heavy drinkers
4.3	Prevalence of insufficient intake of fruit and vegetables and insufficient physical activity

- 4.4 Access to improved drinking-water: percent distribution of households by type of access to drinking water
- 4.5 Access to improved sanitation: percent distribution of households by type of sanitation facility
- 4.6 Solid Fuel use for cooking: percent distribution of households by type of cooking fuel used
- 5 Coverage
 - 5.01 Tuberculosis
 - 5.02 HIV Prevention and Screening
 - 5.03 Antenatal Care and Mother to Child Transmission of HIV
 - 5.04 Birth Delivery Care
 - 5.05 Child's Health - Common Illness
 - 5.06 Child's Health - Danger Signs
 - 5.07 Vaccinations Meeting WHO Timeline Recommendations for Children 12 to 23 months of Age with Vaccination Card
 - 5.08 Vaccination Status of Children 12-23 Months
 - 5.09 Women's Cancer Screening
 - 5.10 Oral Health and Injuries
 - 5.11 Self Reported Non-Communicable Conditions
 - 5.12 Mental Health Conditions
 - 5.13 Cataracts
- 6 Health State Descriptions
 - 6.01 In general, rate your health today - q2000
 - 6.02 Difficulty with 'work and household activities' in last 30 days - q2001
 - 6.03 Difficulty with 'moving around' in last 30 days - q2010
 - 6.04 Difficulty with 'vigorous activities' in last 30 days - q2011
 - 6.05 Difficulty with 'self-care' in last 30 days - q2020
 - 6.06 Difficulty with 'taking care of and maintaining general appearance' in last 30 days - q2021

- 6.07 Amount of 'bodily aches or pains' in last 30 days - q2030
- 6.08 Amount of 'bodily discomfort' in last 30 days - q2031
- 6.09 Difficulty with 'concentrating or remembering things' in last 30 days - q2050
- 6.10 Difficulty with 'learning a new task' in last 30 days - q2051
- 6.11 Difficulty with 'personal relationships or participation in the community' in last 30 days - q2060
- 6.12 Difficulty with 'dealing with conflicts and tensions' in last 30 days - q2061
- 6.13 Difficulty with 'seeing and recognizing a person you know across the road (20m)' in last 30 days - q2071
- 6.14 Difficulty with 'seeing an object at arm's length or in reading' in last 30 days - q2072
- 6.15 Problem with 'sleeping' in last 30 days - q2080
- 6.16 Problem with 'feeling rested and refreshed' in last 30 days - q2081
- 6.17 Problem with 'feeling sad, low, or depressed' in last 30 days - q2090
- 6.18 Problem with 'worry or anxiety' in last 30 days - q2091
- 6.19 Adjusted for vignette responses
- 7 Health System Responsiveness
 - 7.1 Self-reported utilization of health services and perceived unmet need
 - 7.2 Patient assessed characteristics of ambulatory health services
 - 7.3.1 Patient assessment of responsiveness domains for ambulatory services: percent reporting "Moderate", "Bad" or "Very bad" - 1
 - 7.3.2 Patient assessment of responsiveness domains for ambulatory services: percent reporting "Moderate", "Bad" or "Very bad" - 2
 - 7.4 Patient assessed characteristics of hospital inpatient health services
 - 7.5.1 Patient assessment of responsiveness domains for hospital inpatient services: percent reporting "Moderate", "Bad" or "Very bad" - 1
 - 7.5.2 Patient assessment of responsiveness domains for hospital inpatient services: percent reporting "Moderate", "Bad" or "Very bad" - 2
 - 7.6 Importance of different domains of responsiveness: percent reporting "Extremely Important"
- 8 Health Expenditure, Insurance and Human Resources for Health

- 8.0 Expenditure Background Indicators (2002)
- 8.1 Distribution of health payments across different population groups
- 8.2 Percent distribution of structure of out-of-pocket health payments
- 8.3 Financial sources used by households for paying for health services
- 8.4 Insurance Coverage
- 8.5 Human resources for health
- 9.1 Adult Mortality Chart 1
- 9.2 Adult Mortality Chart 2
- 9.3 Adult Mortality Chart 3
- 9.4 Adult Mortality Chart 4
- 10 Stress and Social Capital
- 10.1 Inability to control the important things in life - q8000
- 10.2 Inability to cope - q8001
- 10.3 Satisfaction with your health - q8002
- 10.4 Feeling safe when alone at home - q8011
- 10.5 Feeling safe when walking down the street alone after dark - q8012

1. Introduction

The World Health Organization initiated the World Health Survey (WHS) as a *data collection platform* to obtain information on the health of populations and on health systems. The WHS responds to the need of countries for a detailed and sustainable health information system and gathers data through surveys to measure essential population health parameters. The WHS uses standard survey procedures and instruments for general population surveys to gather comparable data across WHO Member States. These methods and instruments have been refined through scientific review of literature, extensive consultations with international experts and large-scale pilot tests. WHS is designed to evolve through its implementation by continuous input from collaborators, including policy makers, survey institutions, scientists and other interested parties. The data is jointly owned by the countries and the WHO, and there is a commitment for a long-term data collection, building local capacity and using this information for health policy.

The objectives of the World Health Survey were to:

- develop a **means** of providing:
 - **valid, relevant, reliable** and **comparable** information on **outcomes, functions** and **inputs** to health systems
 - to **supplement** the information provided by routine **HIS**
- build the **evidence base** necessary for policy-makers:
 - to **routinely monitor** if health systems are achieving the **desired goals**
 - and in some countries, to assess if the **increase in health resources** is having the desired effect

The introductory chapter of each country report will provide details on the current sources of data from routine health information systems and ad hoc surveys. It will describe the health situation in the country and identify gaps. It will also present a brief overview on the health system organization within the country.

2. Sampling

The WHO sampling guidelines emphasized scientific principles of survey sampling as explicit standards for quality, included examples of good sampling plans, and identified quality assurance standards for countries to adhere to. WHO and technical advisers provided technical support to countries when needed. The following principles were used for sampling in the WHS:

1. The sample should target the *de facto* population (i.e. all people living in that country including guest workers, immigrants and refugees) and not *de jure* population (i.e. the citizens of that country alone) with complete geographic coverage of the country, if possible, or a representative geographic segment of the country.
2. A *sample frame* with 90% coverage that included all key subgroups of interest. Enumeration or listing of households to update the frame was recommended.
3. The WHS sample identified all adult members of the general population aged 18 years or older as its sample. Households are selected using a random, stratified sampling procedure. One individual per household is then selected through a random selection procedure using the Kish table method.
4. The WHS used a sampling strategy which encompasses a known non-zero selection probability for any individual included in the study. This makes it possible to extrapolate the data to the whole population. Households and individuals are selected with a known probability in order to provide selection probabilities for each household and individual in the data set.
5. The WHS sampling strategy was without replacement and categories of non-respondents were clearly defined.
6. The WHS used GPS devices in certain countries and digitized maps to geocode the data within specified guidelines.

Each national report will present a detailed description of the sampling strategy and the allocation tables

2.2.1 Geographic Component of the Survey

Geographic Information refers to any information associated with a location on the Earth's surface. This location can be associated to a coordinate (latitude/longitude), a place's name, a postal address or any other geographic object.

Household Surveys represent an important source of information. If the geographic location of the surveyed clusters is collected at the same time that the interview is conducted users are then able to integrate the spatial dimension in their analysis

The geographic component of the WHO WHS is stored in two sections of the questionnaire:

- 0100 Sampling Information allowing the link between the location of each cluster and the sampling frame used for the survey. This section has also been used in order to collect the type of setting in which each household was located at the time of the survey. This section of the questionnaire has been used for all the countries part of the WHO WHS
- 0200 Geocoding Information for the collection of the latitude and longitude of each household. This section has only been used in 27 countries where GPS devices were available or have been provided. The choice of these countries has been done on the basis of the availability of digital maps delimiting the surveyed clusters, the field data collection planning and their distribution within the different WHO regions. Specific training and field material have been prepared and used by the interviewers or field supervisors in these countries in order to collect the latitude and longitude of each of the surveyed household.

As the sampling design may not always include the administrative structure of the country and as the codes entered in the data set for the sampling level needed to be labelled, a key correspondence table containing this information has been collected after the survey itself.

Once all the survey data and the key correspondence table available a specific protocol has been applied to the two sections mentioned earlier in order to clean eventual data collection or data entry mistakes as well as to fill the gaps in close collaboration with the survey institution.

The questionnaire as well as the training material and data cleaning protocols used can be downloaded from the WHO WHS web site (<http://www.who.int/healthinfo/survey/en/index.html>) in the "Survey Instrument and Related Documents" section.

Malawi is part of the 27 countries where Global Positioning System (GPS) devices have been used during the survey in order to collect the location of each surveyed household.

In order to take advantage of the level of precision given by the use of these devices, but also take into account country respective data confidentiality policies regarding the distribution of such data to third parties, several additional geographical variables have been calculated:

- the weighted centre of gravity of each cluster part of the survey.
- different parameters and indexes giving an indication of the dispersion of the households interviewed in the cluster around its centre of gravity. These parameters and indexes can be used to explain possible heterogeneity in the answers obtained for a same cluster to questions presenting a geography dimension (accessibility for example).

The final geographic subset for Malawi contains:

- the cleaned information stored in the section 0100 and 0200
- the labels attached to the codes used in the data set for identifying each level of the sampling when available
- the 1st and 2nd administrative level names and codes coming from the Second Administrative Level Boundaries data set project (SALB, http://www3.who.int/whosis/gis/salb/salb_home.htm) allowing the link with the administrative structure of the country (if not part of the sampling frame).
- the geographic variables described above

The use of the GPS devices offers a large range of application which goes from the production of thematic maps, through the performing of spatial analysis to modelling using the spatial dimension of some of the surveyed data.

The generation of the maps and/or application of the methods that are now briefly described may require specific Geographic Information System (GIS) software and technical expertise. In addition to that, in order to create thematic maps, extract figures from other layers or perform spatial analysis it is first necessary to make sure that all the digital layers used are homogeneous in terms of: projection, representativity and sometimes scale of representation. The first one insures the proper overlay of the different layers in the GIS; the second is necessary in order to make a correct analysis of the results; the last one becomes important when we try to attribute cluster to other geographical entities like administrative units for example. In any case this underlines the importance of giving preference to digital layers being well documented (meta information available).

The capacity that exist within a GIS to create thematic maps by overlaying different layers or by linking each feature to a specific data set is largely used nowadays. One example of such map is the sampling distribution map reported at the beginning of this report which has been generated overlaying the location of each surveyed cluster on top of the extension of the a population distribution grid with the indication of the delimitation of the administrative units.

As it can be seen it is not necessary to go down to the location of each household for generating a thematic map which already provides a lot of useful information. Depending on the variables it is in fact possible to generate thematic maps at any higher level part of the sampling frame or administrative structure of the country.

The other potential application is the possibility to extract new parameters from spatially distributed variables stored in other digital layers. The parameters generally used are either linked to:

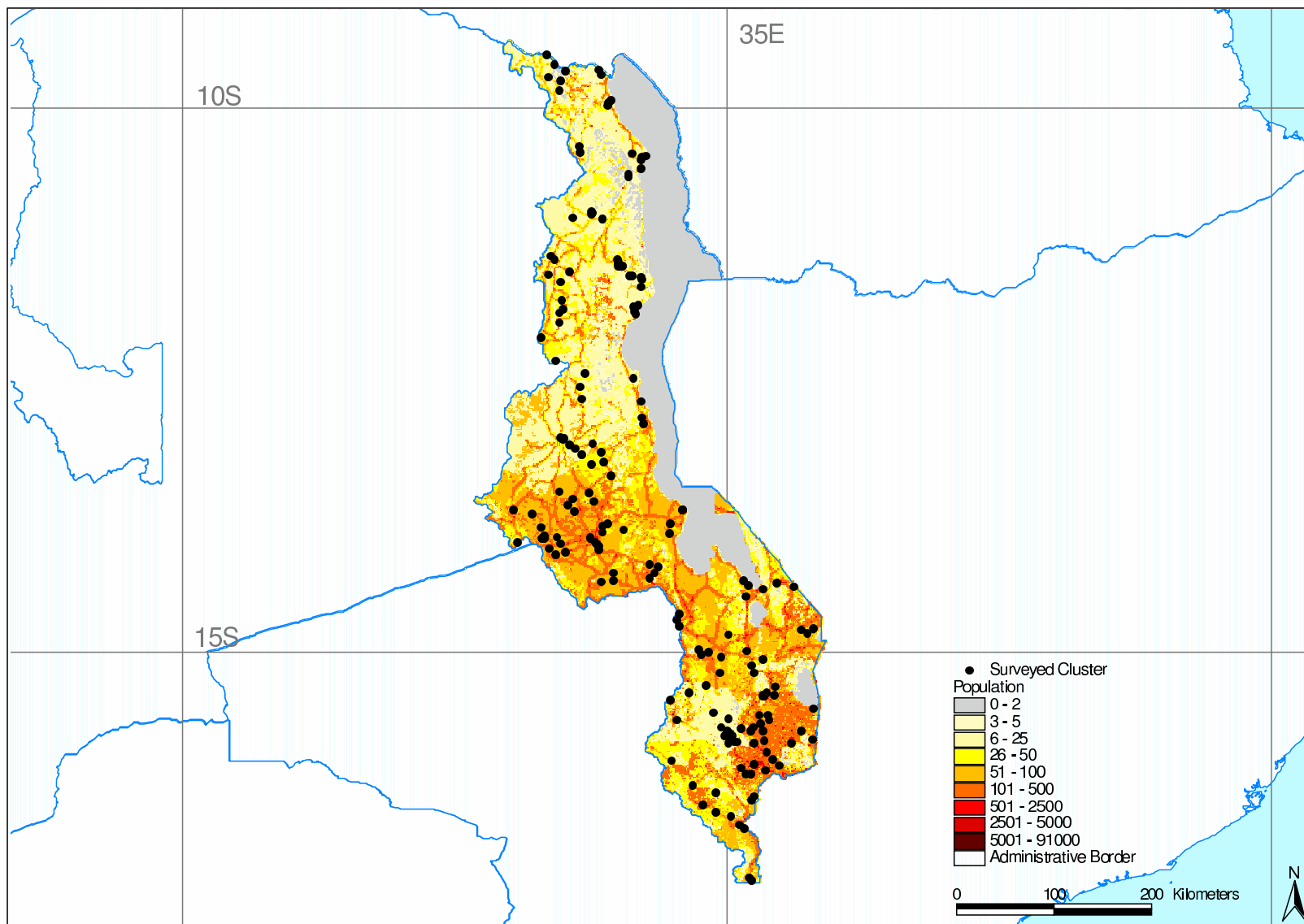
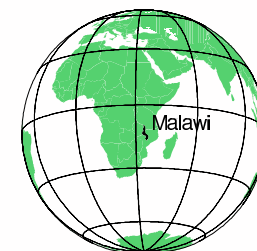
- the location of the cluster itself (e.g altitude)
- the geographic relation (distance or travelling time) which exist between the location of the cluster and the location of other geographic objects (roads, health facility, populated place, water point,.).

These parameters are then used to aggregate the clusters according to new units of analysis integrating therefore the geographic dimension as one of the parameters.

The final example of application that can be mentioned regards the possibility to link the data collected in the context of the WHO WHS to other data collected at the same level (cluster) or any above aggregated level (districts for example) in order to look for possible relationships that would allow the creation of models. If applicable these models may generate figures for units (administrative, statistical) that would not have been integrated in the original sampling frame.

This section only represent a short introduction to the possibilities that the geographic dimension of the surveyed information can offer. A more detailed description of the methods used in order to generate maps, perform specific analysis or apply models are presented in a publication that can be downloaded from the WHO WHS web site (Ebener et al., forthcoming).

MALAWI WHS 2003 Sampling Distribution



Data Source:

- Cluster Location: collected with GPS devices during WHS 2003
- International Boundaries: SALB Data set 2000
- Population distribution: extracted from the Landscan database 2001

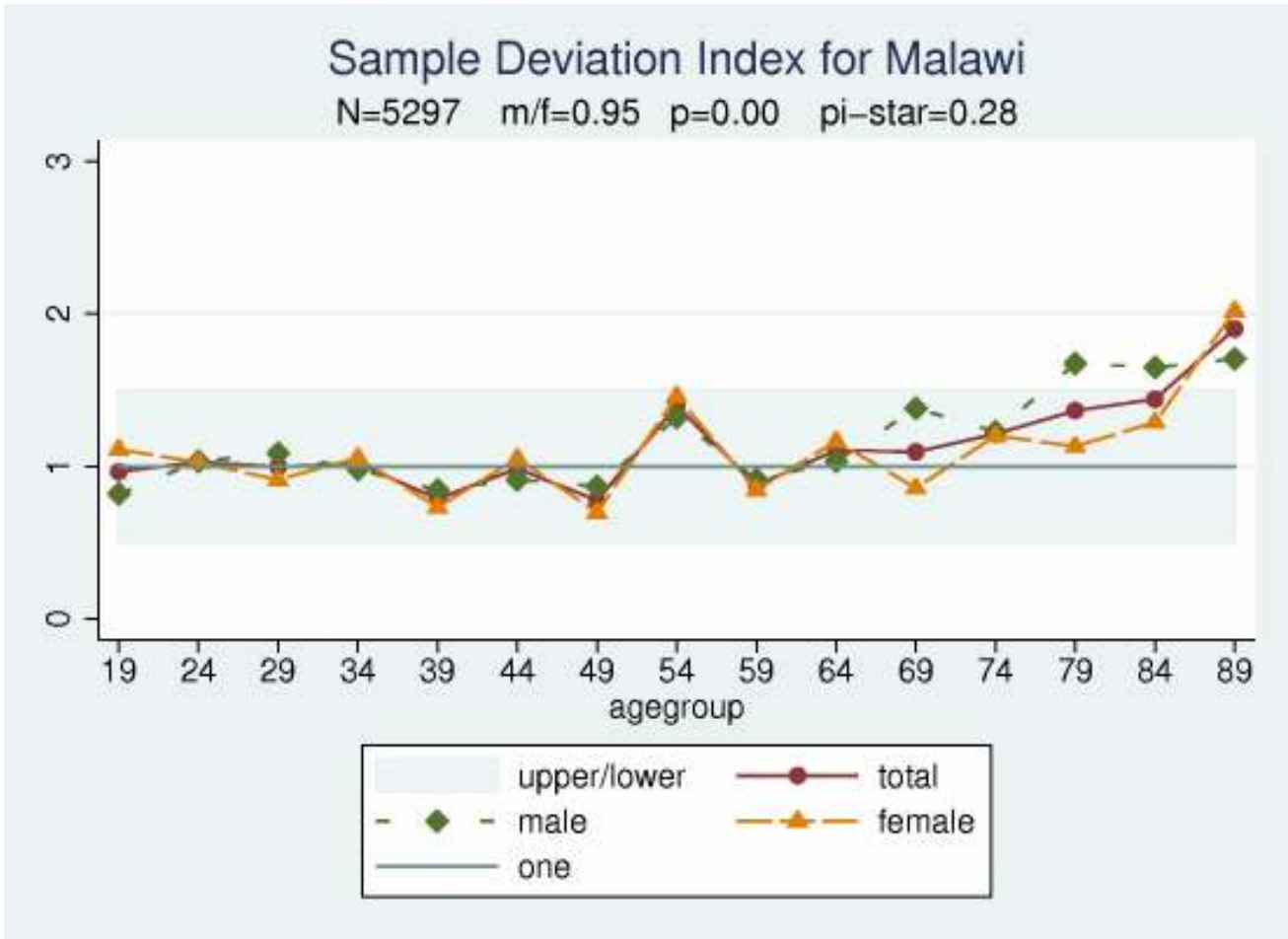
Map Projection: un-projected (Geographic)
Reference System: WGS 84 datum

Map created 21 July 2004

The boundaries and names shown and the designations used on this map do not imply the expression of any opinion whatsoever on the part of the World Health Organization concerning the legal status of any country, territory, city or area or of its authorities, or concerning the delimitation of its frontiers or boundaries. Dotted lines on maps represent approximate border lines for which there may not yet be full agreement.
© WHO 2004. All rights reserved

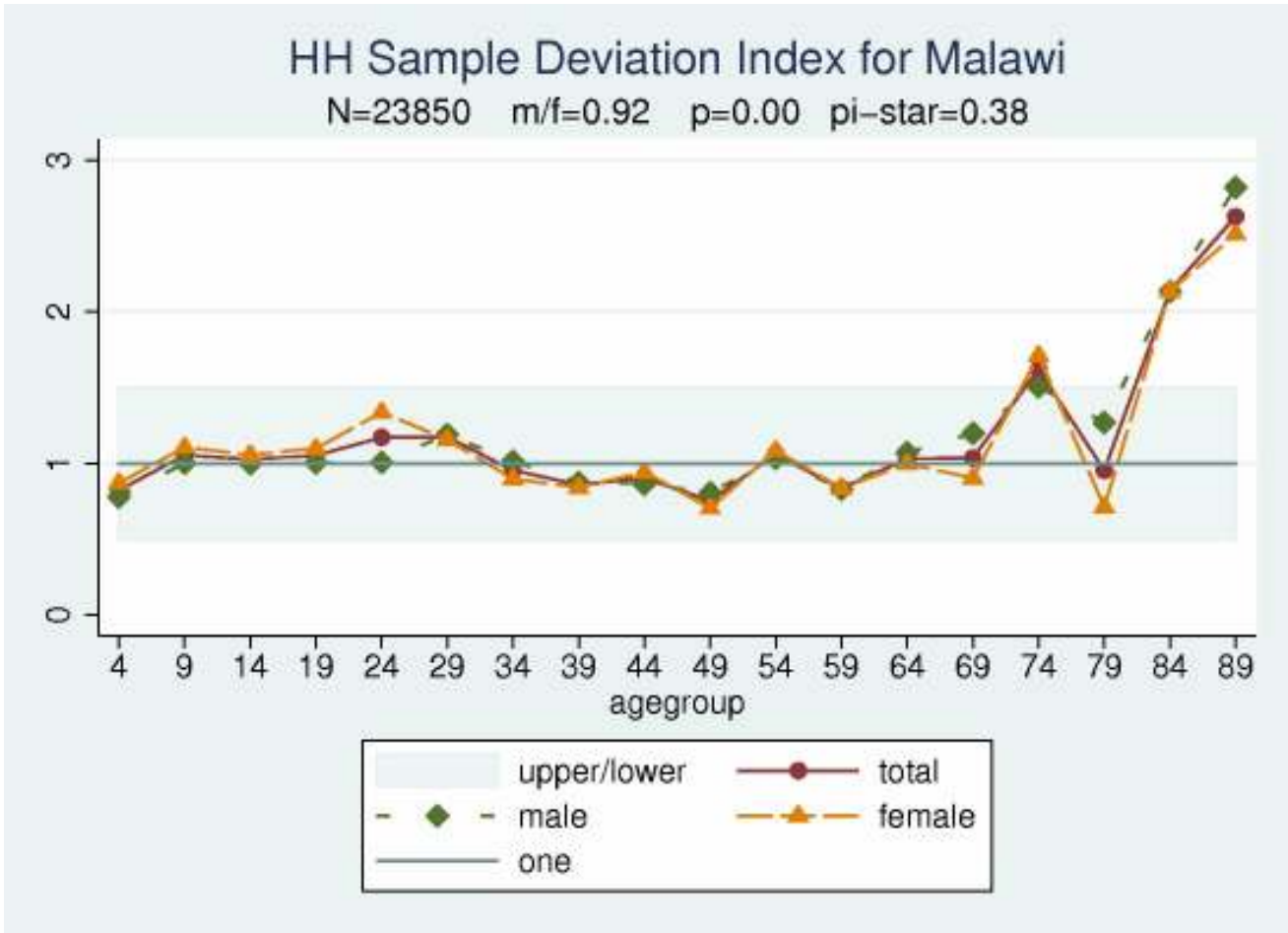


2.3.1 Sample deviation index



SDI

2.3.2 HH Sample deviation index



HDI

2.3.3 Response rate

Household

Selected	5,880
----------	-------

Interviewed	5,490
-------------	-------

Percentages	93
-------------	----

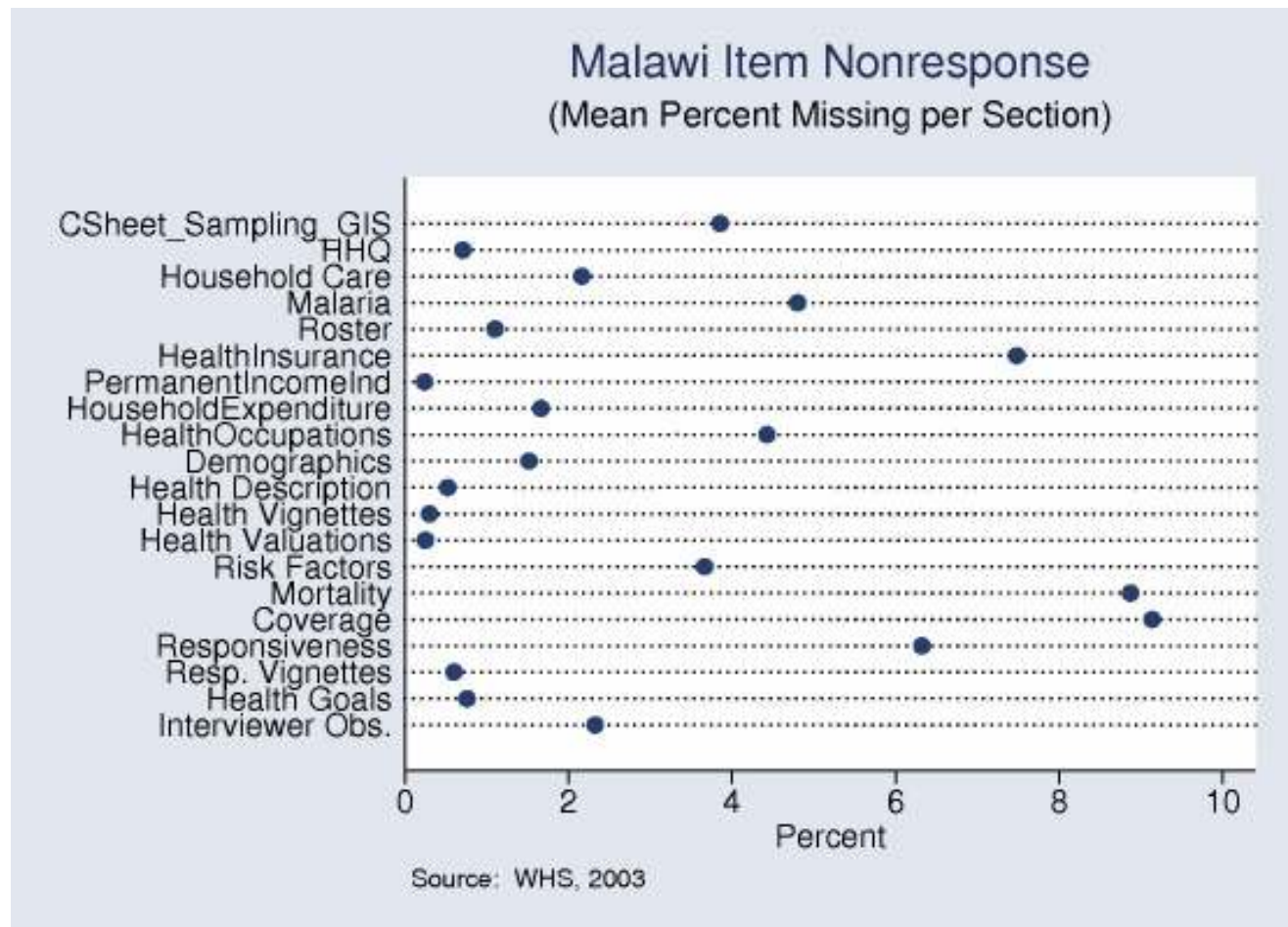
Individual

Selected	5,504
----------	-------

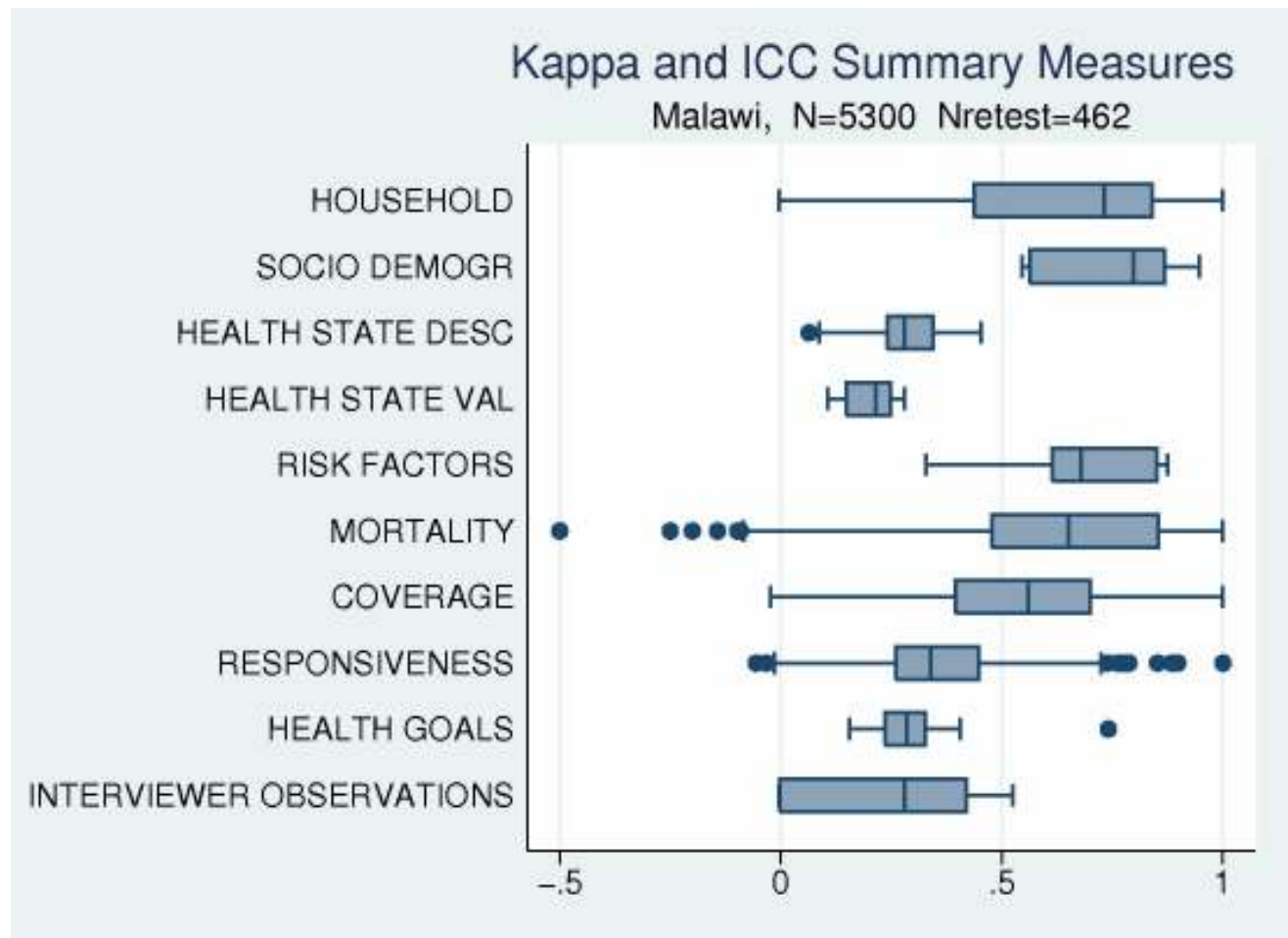
Interviewed	5,287
-------------	-------

Percentages	96
-------------	----

2.3.4 Missing data



2.3.5 Reliability



3.1 Household composition by residence and age groups according to income quintile

	Percent Rural	SE	Mean Number of									
			Household members	SE	Children < 2 years	SE	Children < 5years	SE	Children 5 -17 years	SE	Persons 18+ years	SE
Q1(poorest)	96.8	0.93	3.6	0.06	0.2	0.02	0.6	0.03	1.3	0.04	1.7	0.03
Q2	93.7	1.42	3.9	0.10	0.3	0.02	0.7	0.03	1.2	0.07	1.9	0.03
Q3	86.2	2.07	4.2	0.09	0.2	0.01	0.6	0.03	1.5	0.05	2.0	0.03
Q4	80.2	2.43	4.6	0.10	0.3	0.03	0.7	0.04	1.7	0.06	2.2	0.05
Q5(richest)	60.5	4.34	5.3	0.11	0.2	0.02	0.6	0.04	2.0	0.07	2.6	0.05
All	85.3	0.88	4.2	0.04	0.2	0.01	0.7	0.02	1.5	0.03	2.0	0.03

Note: table based on de jure members of household i.e. usual residents

3.2 Selected age distributions by income quintile

	Females Age 18–49	Persons Age 50+	Persons Age 60+
Q1(poorest)	963	505	293
Q2	894	450	240
Q3	873	421	201
Q4	891	405	209
Q5(richest)	913	343	179
All	4,534	2,124	1,122

Note: table based on de jure members of household i.e. usual residents

3.3 Characteristics of head of household by income quintile

	Mean Age of Head	SE	Median Education of Head	Percent Female Head	SE
Q1 (poorest)	41	0.57	2	40.5	1.77
Q2	39	1.07	2	24.3	1.86
Q3	39	0.58	2	20.0	1.41
Q4	40	0.65	2	21.2	2.11
Q5 (richest)	41	0.83	3	15.4	1.63
All	40	0.38	2	26.1	0.91

Education

1=no formal education

2=less than primary school

3=primary school completed

4=secondary school completed

5=high school (or equivalent) completed

6=college/pre-university/university completed

7=post graduate degree completed

Note: table based on de jure members of household i.e. usual residents

3.4 Household population: percent distribution of the de jure population by age, residence, marital status and education according to sex

	Male	SE	Female	SE	Missing	Total	SE
Age							
0-4	15.8	0.60	15.2	0.50		15.50	0.40
5-14	29.0	0.50	29.0	0.50		29.00	0.30
15-29	29.5	0.70	30.5	0.60		30.00	0.60
30-44	12.9	0.50	12.1	0.40		12.50	0.40
45-59	6.5	0.30	6.6	0.40		6.50	0.30
60-69	2.8	0.30	2.7	0.20		2.80	0.20
70-79	1.5	0.20	1.6	0.10		1.60	0.10
80+	0.6	0.00	0.7	0.10		0.70	0.10
Missing	1.4	0.20	1.4	0.20		1.40	0.20
Residence							
Urban	15.7	1.00	14.7	0.90		15.20	0.90
Rural	84.3	1.00	85.3	0.90		84.80	0.90
Missing	0.0	0.00	0.0	0.00		0.00	0.00
Marital_Status							
Never	61.8	0.70	53.1	0.60		57.30	0.40
Currently	34.2	0.60	34.1	0.50		34.20	0.40
Separated	0.6	0.10	2.1	0.10		1.30	0.10
Divorced	0.9	0.10	3.7	0.20		2.40	0.10
Widowed	1.5	0.10	5.9	0.20		3.80	0.10
CoHabitng	0.0	0.00	0.0	0.00		0.00	0.00
Missing	1.0	0.20	1.1	0.20		1.10	0.20
Education							
NoFormal	28.8	0.70	36.5	1.20		32.80	0.90
LessthanPrimary	53.3	0.90	52.7	0.90		53.00	0.70
Primary	12.1	0.60	8.2	0.60		10.10	0.60
Secondary	4.4	0.40	1.8	0.20		3.10	0.30
HighSchool	0.2	0.10	0.1	0.00		0.10	0.00
College	0.6	0.10	0.2	0.10		0.40	0.10
PostGraduate	0.0	0.00	0.0	0.00		0.00	0.00
Missing	0.5	0.10	0.4	0.10		0.40	0.10
Total	100.0		100.0			100.00	
Number	11,500.0		12,350.0			23,850.00	
Number of Households						5,490.00	

3.5 Background characteristics of respondents: percent distribution of men and women by age, residence, marital status and education

	Male	SE	Female	SE	Missing	Total	SE
Age							
18-29	45.6	1.90	43.2	1.30		44.40	1.30
30-44	28.6	1.10	29.5	1.40		29.00	0.90
45-59	15.4	1.10	16.5	1.30		16.00	0.90
60-69	6.2	1.00	6.3	0.70		6.30	0.60
70-79	3.3	0.40	3.4	0.40		3.30	0.30
80+	0.9	0.10	1.1	0.20		1.00	0.10
Missing	0.0	0.00	0.0	0.00		0.00	0.00
Residence							
Urban	16.8	1.30	14.1	1.00		15.40	1.00
Rural	83.2	1.30	85.9	1.00		84.60	1.00
Missing	0.0	0.00	0.0	0.00		0.00	0.00
Marital_Status							
Never	20.1	1.70	7.7	0.70		13.70	1.10
Currently	73.9	1.80	68.7	1.10		71.30	1.20
Separated	1.1	0.20	3.7	0.60		2.40	0.30
Divorced	2.4	0.40	8.9	0.70		5.70	0.40
Widowed	2.5	0.40	11.1	0.70		6.90	0.30
CoHabitng	0.0	0.00	0.0	0.00		0.00	0.00
Missing	0.0	0.00	0.0	0.00		0.00	0.00
Education							
NoFormal	16.9	0.90	32.9	1.80		25.10	1.10
LessthanPrimary	52.3	1.60	49.1	1.40		50.70	1.20
Primary	21.6	1.00	13.9	1.00		17.60	0.80
Secondary	7.7	1.10	3.5	0.70		5.60	0.90
HighSchool	0.3	0.10	0.1	0.10		0.20	0.10
College	1.2	0.30	0.4	0.20		0.80	0.20
PostGraduate	0.0	0.00	0.0	0.00		0.00	0.00
Missing	0.0	0.00	0.1	0.10		0.00	0.00
Total	100.0		100.0			100.00	
Number	2,584.0		2,713.0			5,297.00	

4.1 Prevalence of smoking and average daily tobacco consumption

	Current daily smoker	SE	Smoker, not daily	SE	Non-smoker	SE	Missing	Average daily tobacco consumption*	SE	Number of respondents
Sex										
Male	20.1	1.20	4.9	0.70	74.1	1.30	1.0	5.9	0.50	2,584
Female	4.9	0.60	0.9	0.20	93.5	0.80	0.7	3.8	0.40	2,713
Missing										0
Residence										
Urban	7.7	1.70	3.0	1.10	88.4	1.70	0.9	9.5	3.10	818
Rural	13.1	0.70	2.9	0.30	83.2	0.70	0.8	5.1	0.30	4,479
Missing										0
Income Quintile										
Q1	19.2	1.50	3.8	0.60	75.5	1.60	1.6	5.2	0.50	1,017
Q2	15.7	1.90	4.5	0.70	78.9	1.90	0.9	4.7	0.30	1,023
Q3	13.5	1.40	1.8	0.50	84.1	1.40	0.6	5.8	0.60	1,015
Q4	7.7	1.10	1.9	0.60	90.0	1.30	0.5	4.7	0.50	969
Q5	5.3	1.20	1.8	0.80	92.2	1.50	0.7	9.4	3.70	989
Missing										284
Age										
18-29	5.3	0.70	1.7	0.40	92.6	0.70	0.4	7.4	1.70	2,351
30-44	12.6	1.10	3.3	0.60	83.3	1.40	0.8	5.1	0.30	1,538
45-59	21.1	2.20	5.3	1.10	72.7	2.40	0.8	5.4	0.60	845
60-69	29.2	3.80	2.5	1.00	65.4	4.80	2.9	3.9	0.30	333
70-79	21.7	3.00	4.4	1.80	71.0	2.20	2.9	6.2	0.50	176
80+	32.7	6.80	1.7	1.00	63.1	6.20	2.5	5.0	1.10	54
Missing										0
All	12.3	0.60	2.9	0.30	84.0	0.70	0.8	5.5	0.40	5,297

* Denominator used is current daily smoker

4.2 Prevalence of life time abstainers, non-heavy drinkers, infrequent heavy drinkers and frequent heavy drinkers

	Life time abstainers	SE	Non-heavy drinkers	SE	Infrequent Heavy Drinkers*	SE	Frequent Heavy drinkers**	SE	Missing	Number of respondents
Sex										
Male	62.5	1.40	31.2	1.20	4.5	0.50	1.7	0.40	0.2	2,584
Female	92.0	0.70	7.3	0.80	0.3	0.10	0.1	0.10	0.3	2,713
Missing										0
Residence										
Urban	74.5	1.70	19.6	2.10	3.1	0.70	2.2	1.10	0.5	818
Rural	78.2	1.00	18.8	0.80	2.2	0.20	0.6	0.10	0.2	4,479
Missing										0
Income Quintile										
Q1	75.0	2.60	22.7	2.10	1.3	0.40	0.7	0.40	0.3	1,017
Q2	75.7	1.60	22.1	1.80	1.9	0.50	0.2	0.10	0.1	1,023
Q3	76.7	2.00	19.5	1.60	2.9	0.60	0.6	0.30	0.3	1,015
Q4	81.5	1.00	15.3	1.00	2.3	0.50	0.7	0.20	0.3	969
Q5	76.2	2.10	17.4	1.90	3.8	0.90	2.4	0.90	0.3	989
Missing										284
Age										
18-29	84.6	1.10	12.6	0.80	1.9	0.30	0.7	0.30	0.2	2,351
30-44	76.0	1.40	20.2	1.40	2.5	0.50	1.2	0.30	0.1	1,538
45-59	71.1	2.80	24.9	2.70	3.2	0.60	0.8	0.30	0.1	845
60-69	63.0	4.20	31.9	4.10	3.3	1.40	1.1	0.60	0.6	333
70-79	63.4	4.20	34.7	4.00	1.1	0.40	0.1	0.10	0.7	176
80+	59.4	6.60	35.0	6.50	3.1	1.30	0.0	0.00	2.5	54
Missing										0
All	77.6	0.90	19.0	0.80	2.3	0.20	0.9	0.20	0.2	5,297

*Infrequent heavy drinkers: 1-2 days with 5 or more standard drinks per week(last 7 days)

**Frequent heavy drinkers: 3 or more days with 5 or more standard drinks per week(last 7 days)

4.3 Prevalence of insufficient intake of fruit and vegetables and insufficient physical activity

	Fruit and vegetable intake					Physical Activity					Number of respondents
	*Insufficient	SE	Sufficient	SE	Missing	**Insufficient	SE	Sufficient	SE	Missing	
Sex											
Male	37.5	1.70	62.5	1.70	0.0	5.5	0.60	94.3	0.60	0.2	2,584
Female	42.2	2.10	57.8	2.10	0.0	9.8	1.40	90.0	1.40	0.2	2,713
Missing											0
Residence											
Urban	49.4	4.10	50.6	4.10	0.0	9.6	1.50	89.9	1.40	0.5	818
Rural	38.1	1.80	61.9	1.80	0.0	7.4	0.80	92.5	0.80	0.1	4,479
Missing											0
Income Quintile											
Q1	42.1	2.90	57.9	2.90	0.0	8.8	1.00	91.0	0.90	0.2	1,017
Q2	43.0	2.60	57.0	2.60	0.0	7.2	1.50	92.5	1.50	0.2	1,023
Q3	34.3	2.70	65.7	2.70	0.0	5.6	1.10	94.3	1.10	0.1	1,015
Q4	38.1	2.30	61.9	2.30	0.0	7.3	1.20	92.7	1.20	0.0	969
Q5	39.2	3.00	60.8	3.00	0.0	9.6	1.60	90.0	1.50	0.4	989
Missing											284
Age											
18-29	39.6	1.60	60.4	1.60	0.0	5.6	0.60	94.2	0.60	0.2	2,351
30-44	41.2	2.40	58.8	2.40	0.0	7.8	0.70	92.2	0.70	0.0	1,538
45-59	37.4	2.90	62.6	2.90	0.0	7.4	1.80	92.6	1.80	0.0	845
60-69	41.7	5.70	58.3	5.70	0.0	10.6	2.20	88.3	2.20	1.1	333
70-79	36.4	4.40	63.6	4.40	0.0	21.8	4.40	78.2	4.40	0.0	176
80+	50.2	5.20	49.8	5.20	0.0	37.5	7.20	60.0	7.20	2.5	54
Missing											0
All	39.9	1.60	60.1	1.60	0.0	7.7	0.70	92.1	0.70	0.2	5,297

*Insufficient intake of fruit/vegetables: less than 5 servings of fruit/vegetables per one typical day

**Insufficient physical activity: less than 150 minutes per week(last 7 days) spent on walking/moderate activity/vigorous activity

4.4 Access to improved drinking-water: percent distribution of households by type of access to drinking water

	Piped into households	SE	other improved sources	SE	Total improved sources	SE	No improved sources	SE	Missing	Number of households
Residence										
Urban	20.6	5.50	61.9	6.00	82.5	2.30	7.5	1.40	10.0	805
Rural	2.1	0.40	56.9	2.70	59.0	2.80	36.8	2.90	4.3	4,685
Missing										0
Income_Quintile										
Q1(poorest)	0.0	0.00	44.2	3.40	44.2	3.40	50.6	3.60	5.2	1,263
Q2	0.2	0.20	57.8	3.90	58.1	3.90	38.2	3.50	3.7	1,126
Q3	1.5	0.50	65.8	2.70	67.3	2.80	29.1	2.80	3.6	1,032
Q4	4.3	0.60	66.0	2.20	70.4	2.40	24.3	2.10	5.3	960
Q5(richest)	23.0	3.70	55.8	4.00	78.8	2.10	12.4	1.90	8.8	834
Missing										276
Total	4.8	0.90	57.6	2.50	62.4	2.40	32.5	2.50	5.1	5,490

other improved sources: public standpipe/protected tube well/borehole/protected dug well/protected spring/rainwater collection

no improved sources: unprotected well/unprotected spring/water taken directly from a pond or stream/tanker truck water/vendor provided water

4.5 Access to improved sanitation: percent distribution of households by type of sanitation facility

	Flush toilet to sewage system	SE	Other improved toilet facilities	SE	Total improved sanitation	SE	No improved sanitation	SE	Missing	Number of households
Residence										
Urban	1.4	0.80	46.2	3.40	47.6	2.90	43.5	3.60	8.9	805
Rural	0.4	0.20	56.4	1.00	56.8	1.00	39.2	0.90	4.0	4,685
Missing										0
Income_Quintile										
Q1(poorest)	0.0	0.00	35.2	2.10	35.2	2.10	60.4	2.00	4.4	1,263
Q2	0.0	0.00	50.2	2.10	50.2	2.10	46.1	2.60	3.8	1,126
Q3	0.2	0.20	61.9	2.60	62.1	2.60	34.7	2.50	3.2	1,032
Q4	0.3	0.30	65.7	2.30	66.1	2.30	28.8	2.20	5.1	960
Q5(richest)	3.1	1.00	67.9	3.20	71.0	2.80	20.8	2.30	8.2	834
Missing										276
Total	0.6	0.20	54.9	1.00	55.5	1.00	39.8	0.90	4.7	5,490

other improved sanitation facilities: connection to septic system/pour-flush latrine/covered dry latrine(with privacy) [provided facilities not shared]
no improved sanitation: uncovered dry latrine(without privacy)/bucket latrine/no facilities(open defecation)

4.6 Solid Fuel use for cooking: percent distribution of households by type of cooking fuel used

	Electricity, Gas	SE	Kerosene	SE	Solid fuels on improved stove	SE	Solid fuels on traditional stove	SE	Total solid fuel use	SE	Missing	Number of households
Residence												
Urban	8.0	2.70	0.8	0.30	2.7	0.80	79.6	4.60	82.2	4.10	9.0	805
Rural	0.6	0.20	0.1	0.00	0.1	0.10	95.2	0.40	95.4	0.40	3.9	4,685
Missing												0
Income_ Quintile												
Q1(poorest)	0.0	0.00	0.0	0.00	0.0	0.00	95.4	1.00	95.4	1.00	4.6	1,263
Q2	0.0	0.00	0.0	0.00	0.1	0.10	96.3	1.00	96.4	1.00	3.6	1,126
Q3	0.0	0.00	0.2	0.20	0.0	0.00	96.7	0.60	96.7	0.60	3.1	1,032
Q4	0.2	0.20	0.3	0.20	0.2	0.10	94.2	0.80	94.4	0.80	5.0	960
Q5(richest)	9.8	2.00	0.6	0.20	2.9	0.80	78.4	3.00	81.3	2.70	8.3	834
Missing												276
Total	1.7	0.40	0.2	0.10	0.5	0.10	93.0	0.80	93.5	0.70	4.7	5,490

5.01 Tuberculosis

		Tuberculosis			
	Total	Need	Coverage	SE	M
Sex					
Female	2,713	11.8	15.5	3.4	0.0
Male	2,584	10.3	14.4	2.8	0.5
Missing	0				
Residence					
Urban	818	7.0	35.9	7.4	0.0
Rural	4,479	11.8	12.7	1.7	0.3
Missing	0				
Income_Quintile					
Q1(poorest)	1,017	14.9	9.8	3.0	0.0
Q2	1,023	12.9	12.3	3.0	0.5
Q3	1,015	10.8	18.7	3.2	0.7
Q4	969	10.0	21.6	7.0	0.0
Q5(richest)	989	7.9	14.8	4.1	0.0
Missing	284				
Age					
18-29	2,351	9.3	13.9	2.4	0.4
30-44	1,538	11.6	16.1	5.1	0.0
45-59	845	10.7	19.1	4.9	0.0
60-69	333	18.7	11.3	5.3	1.0
70-79	176	13.7	13.8	7.5	0.0
80+	54	24.6	9.5	6.6	0.0
Missing	0				
Total	5,297	11.1	15.0	1.8	0.2

M = % Missing of Covered SE= Standard Error of % Covered

Tuberculosis Indicators:

"Need" = % of all respondents with self-reported continuous cough lasting 3 weeks, OR had blood in phlegm, OR had coughed blood in the last 12 months

"Coverage" = % of respondents with self reported symptoms who indicated receiving a TB screening test in the last 12 months.

5.02 HIV Prevention and Screening

	Total (persons of reproductive age 18-49)	Voluntary Counselling and Testing for HIV/AIDS				Condom Usage			
		Need	Coverage	SE	M	Need	Coverage	SE	M
Sex									
Females	2,095	79.9	4.4	0.7	34.7	6.0	25.2	4.0	1.5
Males	2,050	83.8	3.6	0.5	56.7	15.0	46.6	4.7	0.0
Missing									
Residence									
Urban	729	81.0	8.5	1.6	34.6	15.2	47.7	9.6	0.7
Rural	3,417	82.0	3.1	0.3	48.2	9.4	37.8	3.4	0.3
Missing									
Income_Quintile									
Q1(poorest)	764	81.2	1.1	0.3	46.4	6.5	32.5	9.5	0.0
Q2	785	86.1	1.3	0.6	44.6	6.3	44.1	9.0	0.0
Q3	822	85.5	4.6	0.7	46.5	10.0	47.7	7.9	1.5
Q4	769	85.0	6.0	1.0	53.6	13.7	41.0	7.7	0.0
Q5(richest)	817	78.3	7.3	1.5	40.7	14.5	38.6	7.6	0.5
Missing									
Total	4,145	81.8	4.0	0.4	45.8	10.4	40.4	3.4	0.4

M = % Missing of Covered SE= Standard Error of % Covered

HIV Prevention and Screening Indicators:

"Total" = number of respondents of reproductive age.

"Voluntary Counselling and Testing for HIV/AIDS Need" = % of respondents of reproductive age who are sexually active, i.e. have had sexual intercourse in the last 12 months.

"Voluntary Counselling and Testing for HIV/AIDS Coverage" = % of respondents of reproductive age who are sexually active who indicated having taken an HIV test and receiving the results of test.

"Condom Usage Need" = % of respondents of reproductive age whose last sexual encounter during the last 12 months is classified as risky sexual behavior, i.e. having had sexual intercourse with a non-cohabitating partner .

"Condom Usage Coverage" = % of respondents of reproductive age who used a condom last time had risky sex during the last 12 months (with non-cohabitating partner).

5.03 Antenatal Care and Mother to Child Transmission of HIV

	Antenatal Care											Maternal to Child HIV Trans.			
	Women 18-49	Birth in last 5 years	Cov	SE	Visit 1x	Visit 2x	Visit 3x	Blood pressure checked	Blood sample taken	Told Signs of Pregnancy Complications	M	Birth in last 2 years	Cov	SE	M
Residence															
Urban	338	49.6	30.0	6.3	88.5	86.1	84.3	86.9	45.8	57.6	8.2	23.2	8.1	2.3	2.7
Rural	1,757	55.8	16.2	1.6	83.8	81.6	75.3	76.2	25.6	51.2	7.9	29.9	6.7	1.7	2.7
Missing															
Income_Quintile															
Q1(poorest)	398	58.0	16.5	3.1	81.8	78.1	71.7	73.1	25.1	54.0	4.6	30.1	5.7	2.1	0.9
Q2	400	60.7	17.4	3.1	83.7	81.4	77.7	75.7	25.8	48.4	5.2	32.8	6.9	3.5	1.3
Q3	402	53.9	14.0	2.3	83.8	82.0	72.7	76.3	23.8	52.5	12.5	30.4	2.1	1.0	7.9
Q4	374	54.6	14.0	2.7	86.8	84.2	78.2	80.8	28.8	47.7	9.1	31.8	6.2	2.4	1.4
Q5(richest)	406	45.7	31.5	4.3	88.8	87.8	86.2	86.0	45.1	60.7	7.0	18.9	8.8	3.1	2.9
Missing	115														
Total	2,095	54.8	18.2	1.7	84.5	82.3	76.6	77.8	28.6	52.2	8.0	28.8	6.9	1.5	2.7

M = % Missing of Covered SE= Standard Error of %Covered

Antenatal Care Indicators:

Total = Number of female respondents of reproductive age (18-49 years old)

"Birth in Last 5 Years" = % of female respondents of reproductive age indicating having had a live birth in the last 5 years.

"Cov" = % of female respondents of reproductive age with live birth in the last 5 years who indicated having been seen at least 3 times or more by health care professional, received blood pressure, blood sample taken, and told signs about complications for their last pregnancy (aggregate antenatal care indicator).

"Visit 1x" "Visit 2x" "Visit 3x" = % of female respondents of reproductive age with live birth in the last 5 years who indicated having been seen at least once, twice or three times or more respectively by a health care professional during their last pregnancy.

"Blood pressure checked" = % of female respondents of reproductive age with live birth in the last 5 years who had blood pressure taken when they saw health care professional during their last pregnancy.

"Blood sample taken" = % of female respondents of reproductive age with live birth in the last 5 years who had a blood sample taken when they saw health care professional during their last pregnancy.

"Told Signs of Pregnancy Complications" = % of female respondents of reproductive age with live birth in the last 5 years who had been told signs of pregnancy complications when they saw health care professional during their last pregnancy.

Maternal to Child HIV Transmission Indicators:

"Birth in last 2 years" = % of female respondents of reproductive age indicating having had a live birth in the last 2 years.

"Cov" = % of female respondents of reproductive age with live birth in the last 2 years who indicated having been counseled and tested and given results for HIV during their last pregnancy.

5.04 Birth Delivery Care

	Women 18-49	Delivery Care				Place of Delivery						
		Need	Coverage	SE	M	Public Health Facility	SE	Private Health Facility	SE	Home	SE	M
Residence												
Urban	338	49.6	78.9	6.6	2.8	63.2	5.7	24.1	4.0	8.1	3.6	4.7
Rural	1,757	55.8	52.7	2.3	4.7	42.1	3.3	20.8	2.1	32.4	2.1	4.7
Missing												
Income_Quintile												
Q1(poorest)	398	58.0	45.3	4.3	3.1	37.7	4.4	19.1	3.1	40.3	3.8	2.9
Q2	400	60.7	48.5	3.7	2.0	38.8	3.7	23.1	3.8	35.2	3.5	3.0
Q3	402	53.9	49.6	4.4	8.2	39.9	5.4	16.3	2.6	35.3	4.1	8.5
Q4	374	54.6	61.7	5.0	3.9	49.8	5.8	26.7	4.0	20.8	3.9	2.6
Q5(richest)	406	45.7	82.1	3.9	4.0	62.8	4.9	22.7	4.8	9.3	3.0	5.2
Missing	115											
Total	2,095	54.8	56.5	2.3	4.5	45.2	3.0	21.3	1.9	28.8	1.9	4.7

M = % Missing of Covered SE= Standard Error of % Covered Birth Delivery Care Indicators:

Total = Number of female respondents of reproductive age (18-49 years old)

"Birth in Last 5 Years" = % of female respondents of reproductive age indicating having had a live birth in the last 5 years.

"Coverage" = % of female respondents of reproductive age with live birth in the last 5 years who indicated having received assistance with birth delivery from a health care professional (doctor, nurse or midwife) during their last birth.

"Public Health Facility" = % of female respondents of reproductive age with live birth in the last 5 years who indicated having their last birth delivered in a public health facility.

"Private Health Facility" = % of female respondents of reproductive age with live birth in the last 5 years who indicated having their last birth delivered in a private health facility.

"Home" = % of female respondents of reproductive age with live birth in the last 5 years who indicated having their last birth delivered home or in the field (etc.)

5.05 Child's Health - Common Illness

	Total Children under Age of 5	Fever	More liquid	SE	Same or more food	SE	M	Cough	More liquid	SE	Same or more food	SE	M	Diarrhea	More liquid	SE	Same or more food	SE	M
Sex																			
Females	1,325	59.6	10.6	1.3	51.7	2.0	0.9	38.3	8.3	1.0	50.8	59.6	0.6	23.2	18.6	2.9	52.0	3.2	0.2
Males	1,179	62.4	11.0	1.3	54.8	2.6	0.5	44.3	8.4	1.2	57.7	62.4	0.7	24.6	14.8	3.9	47.9	3.6	0.0
Missing	46																		
Residence																			
Urban	419	41.9	11.5	2.6	59.1	6.5	0.8	29.3	8.4	2.1	59.8	41.9	1.4	19.5	20.9	5.1	58.1	6.2	0.0
Rural	2,132	64.4	10.5	1.1	52.6	1.9	0.7	43.1	8.3	0.8	53.9	64.4	0.5	24.8	15.7	2.9	48.7	3.0	0.1
Missing																			
Income_Quintile																			
Q1(poorest)	484	64.6	9.8	1.7	51.3	2.8	0.2	46.0	5.3	1.1	49.8	64.6	0.2	30.4	12.6	3.5	47.0	5.9	0.4
Q2	548	65.0	11.5	2.1	46.9	3.4	1.0	43.5	10.3	3.1	48.7	65.0	0.8	26.1	14.1	2.8	45.8	5.7	0.0
Q3	485	64.7	7.4	1.7	53.3	3.4	1.3	39.5	5.9	2.4	53.9	64.7	1.3	26.0	12.7	6.8	44.4	5.6	0.0
Q4	466	59.1	8.0	1.5	59.3	3.4	0.5	39.1	5.8	1.7	62.9	59.1	0.4	21.4	19.1	5.1	61.9	5.4	0.0
Q5(richest)	469	49.9	20.2	3.5	60.0	4.5	0.6	34.3	17.4	3.2	60.3	49.9	0.7	14.9	36.9	7.1	59.9	7.7	0.0
Missing	99																		
Total	2,551	60.7	10.6	1.0	53.4	1.8	0.7	40.9	8.3	0.8	54.5	60.7	0.6	23.9	16.4	2.7	50.0	2.8	0.1

M = % Missing of Covered SE= Standard Error of % Covered

Child's Common Illness Indicators:

Total = Number of children under the age of 5 years at the time of the interview.

"Fever"/"Cough"/"Diarrhea" = % of children under the age of 5 with reported episode of (cough, fever, or diarrhea) in the last 3 months.

"More Liquid" = % of children under 5 with either fever, cough, or diarrhea in the last 3 months, that were given more liquids to drink during their illness.

"Same or More Food" = % of children under 5 with either fever, cough, or diarrhea in the last 3 months, that were given the same amount or more food to eat during their illness.

5.06 Child's Health - Danger Signs

	Children under 5	Fast Breath	Seeking Treatment						Vomit	Seeking Treatment						No Drink or Eat	Seeking Treatment					
			Yes	SE	Public	Private	Trad	M		Yes	SE	Public	Private	Trad	M		Yes	SE	Public	Private	Trad	M
Sex																						
Females	1,325	0.2	82.2	3.3	48.8	35.3	11.9	0.8	17.1	82.9	3.2	48.6	36.1	14.7	0.8	20.9	79.3	4.7	52.6	30.6	13.5	1.8
Males	1,179	0.2	78.1	3.1	57.1	28.3	12.3	0.6	20.6	80.4	3.7	61.2	29.6	6.8	0.6	21.2	85.3	2.8	54.2	31.2	14.1	0.8
Missing	46																					
Residence																						
Urban	419	0.1	91.8	5.1	59.7	27.7	8.7	4.9	13.4	77.8	11.5	53.6	32.8	12.6	3.2	15.7	82.7	10.2	48.9	24.7	25.7	2.8
Rural	2,132	0.2	79.3	2.5	51.9	32.1	13.0	0.3	20.1	82.7	2.5	55.2	32.4	10.8	0.3	22.0	82.0	2.3	53.7	32.3	11.9	1.1
Missing																						
Income_Quintile																						
Q1(poorest)	484	0.2	73.5	4.1	52.2	27.9	15.2	0.0	22.0	74.8	5.3	51.4	27.7	19.7	0.0	23.8	82.0	4.8	53.7	31.3	13.0	0.0
Q2	548	0.2	82.3	6.2	50.3	30.4	13.9	1.2	19.4	82.4	5.2	59.0	24.5	15.9	0.4	23.7	82.5	4.3	50.6	27.0	16.8	2.5
Q3	485	0.2	72.6	5.7	48.0	38.2	11.7	0.0	20.5	80.6	4.9	56.1	33.4	8.8	0.0	20.2	74.9	4.6	49.5	35.6	14.7	0.9
Q4	466	0.2	83.0	7.8	62.5	31.2	5.4	2.6	16.1	82.5	4.9	52.4	45.4	1.6	2.4	17.2	79.3	6.7	58.2	35.0	6.2	2.3
Q5(richest)	469	0.1	97.6	2.1	54.3	29.8	15.0	0.0	17.6	98.8	1.2	55.7	36.5	4.7	1.2	18.6	95.0	4.0	53.8	31.3	14.9	1.1
Missing	99																					
Total	2,551	0.2	80.3	2.3	52.6	31.7	12.6	0.7	19.0	82.2	2.6	55.0	32.5	11.0	0.7	21.0	82.0	2.4	53.1	31.4	13.6	1.3

M = % Missing of those Seeking Treatment SE= Standard Error of % Seeking Treatment

Child Danger Signs Indicators:

Total = Number of children under the age of 5 years at the time of the interview.

"Fast Breathing"/"Vomiting"/"No Drink or Eat" = % of children under the age of 5 with reported episodes of (fast breathing, vomiting, or no eating or drinking) in the last 3 months.

"Seeking Treatment" = % of children under 5 with episodes of fast breathing, vomiting, or no eating or drinking in the last 3 months that were taken for care/treatment at either a private health facility, public health facility, or traditional healer (other).

Note: large number of missings are usually due to not having information type of facility (either a no answer or a don't know answer).

5.07 Vaccinations Meeting WHO Timeline Recommendations for Children 12 to 23 months of Age with Vaccination Card

	Children 12-23 months with card	DPT 3 Immunization			Measles		
		%Cov	SE	M	%Cov	SE	M
Sex							
Females	265	65.2	4.3	0.0	60.1	3.5	0.0
Males	262	56.6	3.5	0.0	57.7	4.2	0.0
Missing	6						
Residence							
Urban	57	49.5	15.2	0.0	58.4	15.7	0.0
Rural	477	62.5	2.8	0.0	59.2	2.1	0.0
Missing	0						
Income_Quintile							
Q1(poorest)	90	60.0	6.4	0.0	57.0	4.9	0.0
Q2	128	59.2	5.9	0.0	58.9	4.5	0.0
Q3	94	65.2	5.0	0.0	49.6	5.3	0.0
Q4	110	56.2	8.1	0.0	51.7	9.4	0.0
Q5(richest)	85	63.8	5.2	0.0	76.3	5.4	0.0
Missing	26						
Total	533	61.1	3.0	0.0	59.1	2.5	0.0

M = % Missing of Covered SE= Standard Error of % Covered

Vaccinations Meeting WHO Timeline for Children 12 - 23 months Indicators:

Total = Children 12 - 23 months with a vaccination card seen by the interviewer (does not include children less than 12 months to account for censored observations).

"DPT 3" = % of children 12 - 23 months with a vaccination card seen by the interviewer who received 3 inoculations of DTP not sooner than 6, 10 and 14 weeks respectively and before 12 months of age, and that was verified by the interviewer as being recorded on the card.

"Measles" = % of children 12 - 23 months with a vaccination card seen by the interviewer who received who received 1 inoculation of measles not sooner than 8 months of age and before 12 months of age.

5.08 Vaccination Status of Children 12-23 Months

	Children 12-23 months	Card seen			DPT 3 Immunization							Measles						
		Seen	SE	M	Total		Card		No Card		M	Total		Card		No Card		M
					%Cov	SE	%Cov	SE	%Cov	SE		%Cov	SE	%Cov	SE	%Cov	SE	
Sex																		
Females	369	71.8	3.1	0.0	76.7	4.7	85.3	2.3	14.7	2.3	8.2	79.3	3.0	79.4	3.1	20.6	3.1	6.4
Males	348	75.2	3.4	0.0	75.9	3.0	87.5	2.9	12.5	2.9	10.1	82.7	4.0	79.2	3.8	20.8	3.8	9.0
Missing	9																	
Residence																		
Urban	97	58.2	5.6	0.0	59.5	3.6	85.4	7.8	14.6	7.8	26.4	71.1	6.3	72.6	4.6	27.4	4.6	18.7
Rural	629	75.7	2.5	0.0	78.6	2.5	86.6	1.7	13.4	1.7	6.6	82.1	2.5	80.4	2.8	19.6	2.8	6.1
Missing	0																	
Income_Quintile																		
Q1(poorest)	116	77.9	3.5	0.0	78.1	5.0	87.4	3.2	12.6	3.2	6.6	81.2	4.6	85.6	2.7	14.4	2.7	4.4
Q2	180	71.3	3.7	0.0	79.8	3.3	82.2	2.4	17.8	2.4	5.2	86.6	3.0	75.1	3.4	24.9	3.4	4.1
Q3	122	77.0	6.4	0.0	76.4	5.8	86.2	4.6	13.8	4.6	11.0	74.6	4.8	80.8	5.6	19.2	5.6	8.5
Q4	159	68.9	5.4	0.0	70.9	7.7	84.1	4.8	15.9	4.8	9.8	75.7	4.8	76.9	6.0	23.1	6.0	10.7
Q5(richest)	118	72.3	4.9	0.0	73.4	5.1	92.0	4.9	8.0	4.9	16.8	83.6	5.2	79.6	5.4	20.4	5.4	12.8
Missing	32																	
Total	726	73.4	2.3	0.0	76.0	2.2	86.5	1.7	13.5	1.7	9.2	80.6	2.3	79.5	2.5	20.5	2.5	7.8

M = % Missing (% without adequate information to estimate Total DPT3 or Measles Coverage)

SE= Standard Error of % Total, DPT3 or Measles Coverage

Explanation of Indicators for Vaccination Status of Children 12 - 23 Months:

"Card Seen" = % of children 12 - 23 months of age who had a vaccination card seen by the interviewer.

"DPT 3 Immunization": does not account for WHO timeline recommendations.

"Total" = % of all children 12 - 23 months of age with DPT3 vaccination either verified by card or by recall of respondent.

"Card" = % of all DPT3 vaccinations among children 12-23 months that were verified by card only.

"No Card" = % of all DPT3 vaccinations among children 12-23 months that were based on recall of the respondent only.

"Measles": does not account for WHO timeline recommendations.

"Total" = % of all children 12 - 23 months of age with measles vaccination either verified by card or by recall of respondent.

"Card" = % of all Measles vaccinations among children 12-23 months that were verified by card only.

"No Card" = % of all Measles vaccinations among children 12-23 months that were based on recall of the respondent only.

5.09 Women's Cancer Screening

	Total Females	Percent Females 18+	PAP Smear	SE	M	Percent Females 40+	Mammography / Breast Exam	SE	M
Residence									
Urban	383	97.8	3.7	1.4	7.4	23.2	1.4	1.4	21.4
Rural	2,330	95.1	2.5	0.5	4.2	32.6	1.3	0.7	21.9
Missing	0								
Income_Quintile									
Q1(poorest)	540	92.5	1.5	0.5	2.3	29.0	0.0	0.0	15.4
Q2	530	96.3	2.9	1.2	5.2	32.9	0.1	0.1	22.3
Q3	493	95.8	3.1	0.9	4.5	32.4	4.0	2.7	28.0
Q4	480	97.4	2.8	1.1	4.0	30.2	0.0	0.0	17.2
Q5(richest)	476	98.3	4.0	1.4	8.9	28.5	2.6	1.9	26.8
Missing	193								
Age									
18-29	1,172	43.2	3.0	0.6	3.4				
30-39	570	21.0	4.2	1.3	3.3				
40-49	353	13.0	2.6	1.6	5.4	13.0	3.2	1.5	20.8
50-59	324	11.9	0.0	0.0	8.7	11.9	0.0	0.0	22.7
60-69	172	6.3	0.0	0.0	8.7	6.3	0.0	0.0	22.6
70+	122	4.5	0.0	0.0		4.5	0.0	0.0	
Missing	0								
Total	2,713	95.5	2.6	0.5	4.7	31.3	1.3	0.6	21.9

M = % Missing of those with Pap Smear/Mammography SE= Standard Error of % with Pap Smear/Mammography

***Note: Values in the age row under the "Females 18 plus" and "Females 40 plus" columns are column percent values.

Women's Cancer Screening Indicators:

"Papsmear need" = % of all female respondents aged 18-69

"Papsmear" coverage = % of those female respondents aged 18-69 who self-reported receiving a pap smear test during pelvic examination in the last 3 years.

"Mammography need" = % of all female respondents aged 40-69

"Mammography" coverage = % of those female respondents aged 40-69 who self-reported receiving a mammography test or breast examination in the last 3 years.

****In several countries women above age 69 were asked the cancer screening questions, and for this reason they are included in the table. For countries that did not ask this questions of women above age 69, these values are expected to be missing.

5.10 Oral Health and Injuries

	Oral Health Problems					Road Traffic Accidents				Injury			
	Total	Need	Coverage	SE	M	Need	Coverage	SE	M	Need	Coverage	SE	M
Sex													
Female	2,713	37.3	41.7	2.6	3.0	1.3	15.2	8.3	31.4	5.5	4.8	3.6	4.6
Male	2,584	37.3	48.8	1.8	2.0	5.8	33.3	4.6	3.3	11.6	5.3	2.1	0.9
Missing	0												
Residence													
Urban	818	31.0	53.5	7.5	1.1	3.9	39.1	19.5	28.4	6.3	7.2	3.9	0.0
Rural	4,479	38.4	44.0	1.6	2.7	3.4	28.0	4.1	4.5	8.8	4.9	1.5	2.4
Missing	0												
Income_Quintile													
Q1(poorest)	1,017	41.8	34.4	2.8	1.9	2.6	11.6	6.9	3.4	9.0	0.5	0.5	0.9
Q2	1,023	42.7	43.9	3.3	4.0	3.7	36.7	6.0	4.0	7.8	1.8	1.3	2.2
Q3	1,015	38.7	45.2	3.2	2.7	3.2	31.3	12.1	3.4	13.5	2.7	1.6	3.3
Q4	969	31.6	50.5	4.6	2.2	4.2	29.7	14.8	2.3	5.1	4.9	2.7	5.1
Q5(richest)	989	31.4	58.9	6.4	2.0	4.3	38.6	13.8	21.6	6.1	16.6	8.1	0.0
Missing	284												
Age													
18-29	2,351	27.1	45.4	3.5	3.3	4.5	3.7	6.3	3.7	11.0	3.2	1.8	3.2
30-44	1,538	40.3	47.0	2.7	2.7	3.4	2.2	6.4	2.2	6.3	1.0	2.1	1.0
45-59	845	48.4	48.1	3.7	0.7	2.3	50.2	24.1	50.2	7.7	0.6	2.8	0.6
60-69	333	53.1	38.2	5.0	2.6	1.7	10.3	21.3	10.3	6.8	0.0	0.0	0.0
70-79	176	59.6	38.6	6.4	3.0	1.1	15.8	0.0	15.8	3.3	0.0	0.0	0.0
80+	54	51.0	26.9	7.4	2.4	1.4	47.5	0.0	47.5	1.1	0.0	0.0	0.0
Missing	0												
Total	5,297	37.3	45.2	1.7	2.5	3.5	29.9	4.6	8.6	8.5	5.1	1.4	2.1

M = % Missing of % Covered SE= Standard Error of % Covered

Indicators:

Oral Health:

"Need" = % of all respondents indicating any problems in the last 12 months with their mouth and/or teeth.

"Coverage" = % of respondents reporting problems with their mouth and teeth who indicated receiving dental or medical care in last 12 months.

Road Traffic Accident:

"Need" = % of all respondents indicating having suffered bodily injury from a road traffic accident in last 12 months.

"Coverage" = % of respondents reporting having suffered bodily injury from a road traffic accident in last 12 months who indicating having received treatment for their injuries on-site or at health facility within 1 hour of accident .

Injuries from Non-traffic Accidents:

"Need" = % of all respondents indicating having suffered bodily injury due to non-traffic accidents in last 12 months.

"Coverage" = % of respondents reporting having suffered bodily injury due to non-traffic accidents in last 12 months who indicating having received treatment for injuries on-site or at health facility within 1 hour of accident

5.11 Self Reported Non-Communicable Conditions

	Angina					Osteo-Arthritis				Asthma				Diabetes			
	Total	Need	Coverage	SE	M	Need	Coverage	SE	M	Need	Coverage	SE	M	Need	Coverage	SE	M
Sex																	
Female	2,713	19.2	13.1	1.7	0.3	34.7	19.7	1.9	0.0	5.8	23.3	4.8	0.0	0.3	8.8	8.2	0.0
Male	2,584	8.0	15.1	3.3	0.0	29.6	21.3	2.4	0.7	4.3	28.7	6.7	0.0	0.2	50.8	32.5	0.0
Missing	0																
Residence																	
Urban	818	11.2	23.2	3.6	1.9	19.3	22.6	5.7	2.3	5.5	42.5	6.4	0.0	0.4	19.8	20.0	0.0
Rural	4,479	14.2	12.3	1.1	0.0	34.6	20.2	1.6	0.1	5.0	22.2	2.6	0.0	0.2	23.4	18.1	0.0
Missing	0																
Income_Quintile																	
Q1(poorest)	1,017	17.2	14.2	4.2	0.0	34.1	21.4	3.6	0.0	4.6	33.1	6.7	0.0	0.4	0.0	0.0	0.0
Q2	1,023	14.8	12.5	4.0	0.0	32.6	16.2	3.0	0.6	4.5	27.8	6.8	0.0	0.2	100.0	0.0	0.0
Q3	1,015	11.6	11.7	4.0	0.0	33.4	18.7	2.2	0.0	4.5	16.3	6.5	0.0	0.2	4.2	5.0	0.0
Q4	969	12.6	20.2	4.7	1.4	31.3	18.7	3.4	1.2	5.4	28.7	11.9	0.0	0.1	0.0	0.0	0.0
Q5(richest)	989	9.6	6.1	2.0	0.0	25.0	26.5	5.4	0.0	5.8	30.4	6.8	0.0	0.4	23.7	19.2	0.0
Missing	284																
Age																	
18-29	2,351	10.4	14.9	3.0	0.0	18.0	15.5	2.4	1.1	5.0	21.7	4.9	0.0	0.3	0.0	0.0	0.0
30-44	1,538	15.4	12.9	2.7	0.0	35.9	17.0	2.7	0.2	4.5	32.4	7.8	0.0	0.3	0.0	0.0	0.0
45-59	845	17.2	12.4	3.0	0.0	48.8	25.0	2.8	0.0	4.6	15.1	4.3	0.0	0.1	87.2	14.9	0.0
60-69	333	19.2	16.7	6.3	2.7	53.5	28.3	4.8	0.0	5.8	28.2	11.7	0.0	0.3	25.5	24.9	
70-79	176	17.2	12.5	3.4	0.0	59.9	27.4	7.2	0.0	6.9	13.6	7.3	0.0	0.5	0.0	0.0	
80+	54	14.2	0.0	0.0	0.0	62.7	19.7	6.2	0.0	24.8	61.7	14.0	0.0	0.0	0.0	0.0	
Missing	0																
Total	5,297	13.7	13.7	1.1	0.2	32.2	20.4	1.5	0.3	5.1	25.6	2.6	0.0	0.2	22.4	14.4	0.0

M = % Missing for Covered

SE= Standard Error of %Covered

Self Reported Non-Communicable Conditions Indicators:

"Need" = % of total respondents indicating having received a diagnosis of the condition (angina, arthritis, asthma, diabetes) in last 12 months.

"Coverage" = % of respondents with a self-reported condition (angina, arthritis, asthma, diabetes) indicating they have received treatment or screening for the condition in the last 2 weeks.

5.12 Mental Health Conditions

	Total	Depression				Schizophrenia			
		Need	Coverage	SE	M	Need	Coverage	SE	M
Sex									
Female	2,713	1.5	12.7	4.8	0.0	1.3	25.3	8.7	0.0
Male	2,584	1.0	14.7	8.7	0.0	1.0	40.6	20.9	0.0
Missing	0								
Residence									
Urban	818	1.4	16.0	13.2	0.0	0.8	29.4	11.5	0.0
Rural	4,479	1.3	13.0	4.7	0.0	1.2	32.0	12.2	0.0
Missing	0								
Income Quintile									
Q1(poorest)	1,017	0.9	0.0	0.0	0.0	1.3	15.0	10.0	0.0
Q2	1,023	0.6	12.8	7.0	0.0	1.9	48.5	22.7	0.0
Q3	1,015	1.7	23.9	8.5	0.0	1.0	36.6	20.4	0.0
Q4	969	1.5	8.5	7.8	0.0	0.8	29.7	16.6	0.0
Q5(richest)	989	1.8	7.8	6.3	0.0	0.6	6.9	7.7	0.0
Missing	284								
Age									
18-29	2,351	1.3	4.0	4.0	0.0	0.9	17.6	12.8	0.0
30-44	1,538	1.5	32.8	10.2	0.0	1.2	20.6	12.7	0.0
45-59	845	0.9	0.0	0.0	0.0	2.0	70.5	17.8	0.0
60-69	333	1.2	12.2	12.8	0.0	0.6	0.0	0.0	0.0
70-79	176	1.4	0.0	0.0	0.0	1.7	0.0	0.0	0.0
80+	54	1.7	0.0	0.0	0.0	0.8	0.0	0.0	0.0
Missing	0								
Total	5,297	1.3	13.5	4.4	0.0	1.1	31.7		0.0

M = % Missing for Covered

SE= Standard Error of %Covered

Mental Health Conditions Indicators:

"Need" = % of total respondents indicating having received a diagnosis of the condition (depression, schizophrenia) in last 12 months.

"Coverage" = % of respondents with a self-reported condition (depression, schizophrenia) indicating they have received treatment or screening for the condition in the last 2 weeks.

5.13 Cataracts

	Total 60+	Cataracts			
		Need	Coverage	SE	M
Sex					
Female	293	2.1	7.0	6.0	5.5
Male	269	3.3	77.7	15.4	0.0
Missing	0				
Residence					
Urban	43	0.5	100.0	0.0	0.0
Rural	520	2.8	48.2	11.1	2.3
Missing	0				
Income_Quintile					
Q1(poorest)	133	1.4	10.7	11.5	18.2
Q2	116	2.5	0.0	0.0	0.0
Q3	94	0.3	15.6	18.6	0.0
Q4	94	9.0	76.3	9.3	0.0
Q5(richest)	74	2.0	43.9	30.6	0.0
Missing	51				
Age					
60-69	333	1.7	11.3	7.6	0.0
70-79	176	3.7	60.4	25.5	5.1
80+	54	5.3	96.6	4.5	0.0
Missing	0				
Total	563	2.7	49.0	10.8	2.2

M = % Missing of Covered SE= Standard Error of %Covered

Cataracts Indicators:

Total = Number of respondents 60 years of age or more.

"Need" = % in need (respondents 60 years of age or more with self-reported diagnosis of cataracts in the last 5 years).

"Coverage" = % respondents 60 years of age or more with self-reported diagnosis of cataracts having indicated receiving eye surgery to remove cataracts in the last 5 years)

6.01 In general, rate your health today - q2000

	Very Good	SE	Good	SE	Moderate	SE	Bad	SE	Very Bad	SE	Missing	SE	N
Gender													
Male	58.0	1.2	22.0	1.2	15.2	1.0	4.0	0.7	0.6	0.2	0.3	0.1	2,584
Female	50.2	1.7	25.4	1.5	17.7	0.8	5.8	0.5	0.8	0.3	0.2	0.0	2,713
M	0.0	0.0	0.0	0.0	0.0	0.0	0.0	0.0	0.0	0.0	0.0	0.0	
Residence													
Urban	58.1	1.2	21.2	1.5	15.6	1.0	3.8	1.3	1.1	0.8	0.2	0.1	818
Rural	53.3	1.3	24.2	1.3	16.6	0.8	5.1	0.4	0.6	0.2	0.2	0.1	4,479
M	0.0	0.0	0.0	0.0	0.0	0.0	0.0	0.0	0.0	0.0	0.0	0.0	
Income													
Q1(poorest)	46.6	2.7	25.8	2.8	21.3	1.8	5.1	0.7	1.1	0.3	0.2	0.2	1,017
Q2	50.2	2.9	25.8	2.4	16.4	1.5	6.6	1.0	0.8	0.4	0.2	0.2	1,023
Q3	56.4	1.7	23.5	1.7	16.3	1.6	3.1	0.9	0.6	0.4	0.2	0.2	1,015
Q4	56.9	2.0	25.0	1.9	13.4	1.0	4.6	1.0	0.1	0.1	0.1	0.1	969
Q5(richest)	61.4	2.3	20.9	1.6	13.4	1.6	3.0	0.8	0.8	0.6	0.5	0.2	989
M	49.6	4.6	15.9	4.4	21.1	3.4	12.3	2.3	1.1	1.0	0.0	0.0	284
Age													
18-29	63.7	1.6	21.3	1.8	11.5	0.9	3.1	0.5	0.1	0.0	0.4	0.1	2,351
30-44	54.8	1.6	24.5	1.2	14.8	0.9	4.5	0.8	1.2	0.5	0.2	0.1	1,538
45-59	45.0	2.3	25.9	1.6	23.1	1.9	5.9	2.0	0.1	0.1	0.0	0.0	845
60-69	31.4	4.1	30.1	2.5	26.4	2.8	10.1	2.7	2.1	1.0	0.0	0.0	333
70-79	19.5	4.8	25.7	4.1	36.9	5.1	15.1	2.7	2.8	1.8	0.0	0.0	176
80+	3.7	1.9	29.1	5.8	49.3	5.8	11.6	3.6	6.2	3.4	0.0	0.0	54
M	0.0	0.0	0.0	0.0	0.0	0.0	0.0	0.0	0.0	0.0	0.0	0.0	
All	54.0	1.2	23.8	1.1	16.4	0.7	4.9	0.4	0.7	0.2	0.2	0.1	5,297

6.02 Difficulty with 'work and household activities' in last 30 days - q2001

	None	SE	Mild	SE	Moderate	SE	Sever	SE	Extreme/ Cannot do	SE	Missing	SE	N
Gender													
Male	63.4	2.1	18.4	1.6	8.9	1.0	8.0	1.0	1.0	0.3	0.3	0.2	2,584
Female	57.6	1.1	21.4	1.1	9.7	0.9	9.1	0.6	1.5	0.3	0.6	0.2	2,713
M	0.0	0.0	0.0	0.0	0.0	0.0	0.0	0.0	0.0	0.0	0.0	0.0	
Residence													
Urban	72.2	2.2	13.7	1.5	7.7	1.1	4.8	1.4	1.1	0.8	0.5	0.2	818
Rural	58.2	1.6	21.1	1.5	9.6	0.9	9.2	0.7	1.3	0.2	0.4	0.1	4,479
M	0.0	0.0	0.0	0.0	0.0	0.0	0.0	0.0	0.0	0.0	0.0	0.0	
Income													
Q1(poorest)	53.5	3.4	21.2	2.8	11.3	0.9	11.6	1.1	1.9	0.6	0.5	0.3	1,017
Q2	56.5	2.2	23.4	1.6	10.0	1.4	8.8	1.5	1.3	0.4	0.0	0.0	1,023
Q3	59.1	1.8	22.8	1.6	8.9	1.4	7.2	1.0	1.3	0.6	0.7	0.3	1,015
Q4	66.4	2.2	17.1	1.5	8.5	1.5	6.3	1.3	0.9	0.3	0.7	0.4	969
Q5(richest)	68.9	2.7	16.6	2.1	5.9	1.0	6.9	1.4	1.1	0.8	0.5	0.2	989
M	54.0	4.5	14.5	3.3	15.8	4.1	14.7	1.4	1.0	0.7	0.0	0.0	284
Age													
18-29	69.2	1.8	17.2	1.4	6.8	1.2	5.5	0.7	0.5	0.2	0.7	0.2	2,351
30-44	63.2	1.7	18.0	1.8	8.4	1.0	8.5	0.8	1.9	0.7	0.1	0.1	1,538
45-59	46.7	2.8	29.5	2.0	12.5	1.6	9.4	2.1	1.7	0.6	0.2	0.2	845
60-69	46.6	4.4	22.7	3.6	13.8	2.0	16.0	3.0	0.5	0.3	0.4	0.4	333
70-79	24.2	4.4	24.3	3.9	23.2	2.7	23.7	3.0	3.8	1.5	0.8	0.7	176
80+	17.6	4.6	15.2	4.4	22.8	5.6	34.2	8.6	9.2	4.0	1.1	1.0	54
M	0.0	0.0	0.0	0.0	0.0	0.0	0.0	0.0	0.0	0.0	0.0	0.0	
All	60.4	1.4	20.0	1.3	9.3	0.8	8.6	0.6	1.3	0.2	0.5	0.1	5,297

6.03 Difficulty with 'moving around' in last 30 days - q2010

	None	SE	Mild	SE	Moderate	SE	Sever	SE	Extreme/ Cannot do	SE	Missing	SE	N
Gender													
Male	73.9	1.4	14.9	1.1	4.5	0.5	5.7	0.5	0.8	0.2	0.3	0.2	2,584
Female	69.4	1.4	15.7	1.0	7.1	0.9	6.9	0.8	0.7	0.2	0.2	0.0	2,713
M	0.0	0.0	0.0	0.0	0.0	0.0	0.0	0.0	0.0	0.0	0.0	0.0	
Residence													
Urban	78.9	2.1	12.6	1.6	5.3	0.9	2.8	1.4	0.1	0.1	0.2	0.1	818
Rural	70.2	1.4	15.8	1.0	5.9	0.5	6.9	0.5	0.8	0.1	0.2	0.1	4,479
M	0.0	0.0	0.0	0.0	0.0	0.0	0.0	0.0	0.0	0.0	0.0	0.0	
Income													
Q1(poorest)	66.2	2.2	16.7	1.4	5.9	1.0	9.9	0.9	1.1	0.3	0.2	0.2	1,017
Q2	67.9	2.8	19.1	2.3	5.8	0.7	6.6	1.0	0.6	0.3	0.0	0.0	1,023
Q3	72.6	2.1	14.5	1.8	6.2	0.9	5.9	1.2	0.3	0.2	0.5	0.2	1,015
Q4	79.1	1.7	12.2	1.3	5.3	1.1	2.6	0.7	0.9	0.5	0.1	0.1	969
Q5(richest)	75.5	1.9	13.5	1.4	6.1	1.2	3.8	1.0	0.7	0.5	0.4	0.2	989
M	61.3	5.5	16.5	4.2	5.8	1.7	15.1	1.9	1.0	0.5	0.1	0.1	284
Age													
18-29	80.9	1.6	11.5	1.2	3.1	0.4	3.7	0.6	0.4	0.2	0.4	0.1	2,351
30-44	73.4	1.7	14.4	1.3	6.0	0.9	5.8	1.1	0.4	0.2	0.1	0.0	1,538
45-59	61.4	2.3	21.9	1.8	6.4	1.4	9.3	1.5	1.1	0.4	0.0	0.0	845
60-69	50.9	3.6	23.1	3.7	13.9	2.6	9.5	1.8	2.0	1.4	0.6	0.4	333
70-79	36.4	4.7	23.6	3.1	18.2	3.2	19.8	3.5	2.0	1.1	0.0	0.0	176
80+	14.9	4.5	29.9	8.3	24.4	6.1	22.3	6.1	8.5	3.7	0.0	0.0	54
M	0.0	0.0	0.0	0.0	0.0	0.0	0.0	0.0	0.0	0.0	0.0	0.0	
All	71.6	1.2	15.3	0.9	5.8	0.4	6.3	0.5	0.7	0.1	0.2	0.1	5,297

6.04 Difficulty with 'vigorous activities' in last 30 days - q2011

	None	SE	Mild	SE	Moderate	SE	Sever	SE	Extreme/ Cannot do	SE	Missing	SE	N
Gender													
Male	67.0	1.3	15.3	1.0	5.9	0.5	9.3	0.7	2.1	0.4	0.3	0.2	2,584
Female	60.9	1.6	15.2	1.4	9.0	0.7	11.6	0.8	3.0	0.5	0.3	0.1	2,713
M	0.0	0.0	0.0	0.0	0.0	0.0	0.0	0.0	0.0	0.0	0.0	0.0	
Residence													
Urban	75.4	1.8	10.2	1.3	7.6	1.3	5.0	1.5	1.5	1.2	0.4	0.2	818
Rural	61.8	1.1	16.2	1.1	7.5	0.4	11.5	0.6	2.8	0.2	0.3	0.1	4,479
M	0.0	0.0	0.0	0.0	0.0	0.0	0.0	0.0	0.0	0.0	0.0	0.0	
Income													
Q1(poorest)	58.5	2.1	15.7	1.7	7.8	0.6	15.3	1.3	2.6	0.5	0.2	0.2	1,017
Q2	59.8	2.1	16.6	2.4	10.8	0.7	9.9	1.1	2.8	0.7	0.0	0.0	1,023
Q3	62.2	1.3	17.9	1.0	7.5	0.8	9.8	1.3	2.2	0.8	0.4	0.1	1,015
Q4	70.0	1.8	14.7	1.5	5.8	0.9	6.7	1.0	2.4	0.6	0.4	0.2	969
Q5(richest)	72.0	1.8	11.6	1.4	6.0	1.0	7.4	1.6	2.5	0.9	0.5	0.2	989
M	54.8	4.0	14.4	2.4	5.4	2.6	21.3	3.1	4.1	1.9	0.1	0.1	284
Age													
18-29	73.4	1.1	13.8	1.0	4.4	0.6	5.9	0.6	2.1	0.4	0.5	0.1	2,351
30-44	66.5	1.7	14.4	1.0	6.7	1.1	10.5	1.2	1.6	0.4	0.2	0.1	1,538
45-59	51.7	1.9	17.5	2.0	13.1	1.6	14.6	1.8	3.1	0.8	0.0	0.0	845
60-69	43.5	3.8	21.9	3.4	12.8	3.1	17.4	2.1	4.0	1.6	0.3	0.3	333
70-79	28.0	4.0	17.0	5.8	17.0	3.0	30.7	4.6	7.2	1.9	0.0	0.0	176
80+	7.9	3.1	21.3	4.9	14.8	3.7	33.9	6.2	22.2	6.0	0.0	0.0	54
M	0.0	0.0	0.0	0.0	0.0	0.0	0.0	0.0	0.0	0.0	0.0	0.0	
All	63.9	1.0	15.3	0.9	7.5	0.4	10.5	0.6	2.6	0.3	0.3	0.1	5,297

6.05 Difficulty with 'self-care' in last 30 days - q2020

	None	SE	Mild	SE	Moderate	SE	Sever	SE	Extreme/ Cannot do	SE	Missing	SE	N
Gender													
Male	86.0	1.6	9.0	1.1	2.2	0.4	1.9	0.4	0.6	0.2	0.2	0.2	2,584
Female	79.3	1.3	13.8	1.0	3.1	0.4	3.2	0.4	0.3	0.1	0.2	0.1	2,713
M	0.0	0.0	0.0	0.0	0.0	0.0	0.0	0.0	0.0	0.0	0.0	0.0	
Residence													
Urban	91.4	0.9	5.1	1.0	1.8	0.4	1.4	0.8	0.2	0.2	0.2	0.1	818
Rural	81.0	1.6	12.6	1.1	2.9	0.4	2.8	0.4	0.5	0.1	0.2	0.1	4,479
M	0.0	0.0	0.0	0.0	0.0	0.0	0.0	0.0	0.0	0.0	0.0	0.0	
Income													
Q1(poorest)	80.0	2.0	12.2	1.1	3.6	0.9	3.2	0.7	0.8	0.3	0.2	0.2	1,017
Q2	79.0	3.0	13.6	2.2	2.8	0.4	4.0	0.9	0.4	0.3	0.2	0.2	1,023
Q3	81.5	2.3	13.8	1.7	2.9	0.8	1.1	0.4	0.3	0.2	0.4	0.1	1,015
Q4	86.8	1.6	9.5	1.4	1.9	0.5	1.6	0.4	0.1	0.1	0.1	0.1	969
Q5(richest)	89.0	1.4	6.1	1.2	2.0	0.5	1.8	0.8	0.8	0.5	0.3	0.2	989
M	71.8	3.1	18.6	2.8	3.0	0.7	6.4	1.3	0.1	0.0	0.1	0.1	284
Age													
18-29	87.9	1.1	8.2	1.0	1.9	0.4	1.4	0.4	0.3	0.1	0.3	0.1	2,351
30-44	83.3	1.4	11.1	1.1	2.0	0.8	3.1	1.0	0.4	0.2	0.2	0.1	1,538
45-59	80.2	3.6	13.4	2.6	3.1	0.9	2.2	0.9	1.0	0.4	0.0	0.0	845
60-69	68.7	3.6	20.6	3.2	5.2	1.3	4.7	1.5	0.5	0.4	0.3	0.3	333
70-79	54.1	4.0	27.7	3.8	8.2	2.1	9.0	1.8	0.6	0.4	0.4	0.3	176
80+	46.0	8.3	25.0	6.8	17.8	3.3	9.8	3.3	1.5	1.5	0.0	0.0	54
M	0.0	0.0	0.0	0.0	0.0	0.0	0.0	0.0	0.0	0.0	0.0	0.0	
All	82.6	1.4	11.5	0.9	2.7	0.3	2.6	0.4	0.5	0.1	0.2	0.1	5,297

6.06 Difficulty with 'taking care of and maintaining general appearance' in last 30 days - q2021

	None	SE	Mild	SE	Moderate	SE	Sever	SE	Extreme/ Cannot do	SE	Missing	SE	N
Gender													
Male	86.4	1.6	8.7	1.1	2.3	0.4	1.7	0.4	0.5	0.2	0.3	0.2	2,584
Female	80.2	1.3	12.9	1.1	3.2	0.4	3.1	0.5	0.2	0.1	0.3	0.1	2,713
M	0.0	0.0	0.0	0.0	0.0	0.0	0.0	0.0	0.0	0.0	0.0	0.0	
Residence													
Urban	91.1	1.0	5.3	1.0	2.1	0.5	1.3	0.8	0.2	0.2	0.2	0.1	818
Rural	81.8	1.5	11.9	1.2	2.9	0.3	2.7	0.4	0.4	0.1	0.4	0.1	4,479
M	0.0	0.0	0.0	0.0	0.0	0.0	0.0	0.0	0.0	0.0	0.0	0.0	
Income													
Q1(poorest)	79.4	2.1	12.2	1.6	3.9	0.8	3.1	0.7	0.7	0.3	0.6	0.2	1,017
Q2	80.6	2.7	13.3	2.4	2.3	0.5	3.5	0.8	0.2	0.1	0.2	0.2	1,023
Q3	83.2	2.1	12.1	1.5	3.3	0.9	0.8	0.4	0.2	0.2	0.5	0.1	1,015
Q4	87.0	1.4	9.2	1.2	2.1	0.5	1.5	0.6	0.1	0.0	0.1	0.1	969
Q5(richest)	89.6	1.2	5.3	1.0	2.2	0.6	1.9	0.8	0.8	0.5	0.3	0.2	989
M	71.2	2.7	18.5	2.4	2.8	1.4	7.4	2.1	0.1	0.0	0.0	0.0	284
Age													
18-29	88.9	1.1	7.5	0.9	1.8	0.4	1.1	0.4	0.1	0.1	0.5	0.2	2,351
30-44	83.6	1.2	10.6	0.9	2.4	0.5	2.8	1.0	0.3	0.2	0.2	0.1	1,538
45-59	81.0	3.4	12.5	2.4	2.8	0.9	2.5	0.8	1.0	0.4	0.1	0.1	845
60-69	68.5	3.4	22.1	2.8	4.3	1.2	4.1	1.4	0.4	0.3	0.6	0.4	333
70-79	55.5	4.0	24.4	3.8	10.6	2.6	9.1	2.1	0.4	0.3	0.0	0.0	176
80+	39.2	5.9	26.6	4.5	15.6	3.2	17.1	3.5	1.5	1.5	0.0	0.0	54
M	0.0	0.0	0.0	0.0	0.0	0.0	0.0	0.0	0.0	0.0	0.0	0.0	
All	83.2	1.3	10.9	1.0	2.7	0.2	2.5	0.4	0.4	0.1	0.3	0.1	5,297

6.07 Amount of 'bodily aches or pains' in last 30 days - q2030

	None	SE	Mild	SE	Moderate	SE	Sever	SE	Extreme/ Cannot do	SE	Missing	SE	N
Gender													
Male	53.9	1.6	23.6	1.7	9.6	0.7	10.9	0.6	1.7	0.4	0.2	0.2	2,584
Female	47.5	1.3	25.2	1.0	12.8	1.0	12.7	0.9	1.6	0.3	0.3	0.1	2,713
M	0.0	0.0	0.0	0.0	0.0	0.0	0.0	0.0	0.0	0.0	0.0	0.0	
Residence													
Urban	61.0	3.0	19.0	1.9	12.4	2.4	5.1	1.1	1.9	1.2	0.6	0.4	818
Rural	48.7	1.2	25.4	1.0	11.1	0.6	13.1	0.6	1.6	0.2	0.2	0.1	4,479
M	0.0	0.0	0.0	0.0	0.0	0.0	0.0	0.0	0.0	0.0	0.0	0.0	
Income													
Q1(poorest)	47.4	2.2	22.9	1.6	10.7	0.9	16.6	1.0	2.1	0.5	0.2	0.2	1,017
Q2	46.3	3.2	27.3	2.0	9.9	1.2	14.6	1.2	1.8	0.6	0.0	0.0	1,023
Q3	50.1	2.3	25.6	1.5	11.9	1.5	10.8	1.5	1.3	0.4	0.4	0.1	1,015
Q4	55.0	1.8	26.1	1.5	10.3	1.2	7.4	1.2	1.1	0.6	0.1	0.1	969
Q5(richest)	59.1	2.6	20.4	2.0	12.6	2.2	5.3	1.2	1.9	1.0	0.6	0.3	989
M	34.4	5.1	23.5	4.0	14.5	3.2	26.9	4.6	0.6	0.5	0.0	0.0	284
Age													
18-29	58.9	1.4	23.3	1.2	8.0	0.6	8.3	0.6	1.1	0.4	0.3	0.1	2,351
30-44	54.6	1.4	21.9	1.3	11.0	1.0	10.9	1.0	1.4	0.4	0.3	0.2	1,538
45-59	37.6	2.9	29.4	3.0	16.5	2.8	14.5	1.1	2.1	0.7	0.0	0.0	845
60-69	28.9	4.2	31.4	4.0	14.7	1.8	22.1	4.8	2.6	1.5	0.3	0.3	333
70-79	21.5	3.6	23.5	4.4	22.9	3.0	29.9	4.1	2.2	1.1	0.0	0.0	176
80+	7.1	3.4	26.5	7.4	18.3	5.8	31.9	5.3	16.1	4.1	0.0	0.0	54
M	0.0	0.0	0.0	0.0	0.0	0.0	0.0	0.0	0.0	0.0	0.0	0.0	
All	50.6	1.1	24.4	0.9	11.3	0.6	11.9	0.5	1.6	0.2	0.2	0.1	5,297

6.08 Amount of 'bodily discomfort' in last 30 days - q2031

	None	SE	Mild	SE	Moderate	SE	Sever	SE	Extreme/ Cannot do	SE	Missing	SE	N
Gender													
Male	54.2	1.4	23.4	1.5	9.8	0.6	10.5	0.7	1.8	0.4	0.2	0.2	2,584
Female	48.1	1.4	24.7	1.2	12.7	1.1	12.7	1.0	1.6	0.3	0.2	0.0	2,713
M	0.0	0.0	0.0	0.0	0.0	0.0	0.0	0.0	0.0	0.0	0.0	0.0	
Residence													
Urban	61.0	3.0	20.3	1.4	10.9	2.3	5.4	1.0	2.3	1.2	0.2	0.1	818
Rural	49.3	1.3	24.8	1.1	11.4	0.6	12.8	0.6	1.6	0.2	0.2	0.1	4,479
M	0.0	0.0	0.0	0.0	0.0	0.0	0.0	0.0	0.0	0.0	0.0	0.0	
Income													
Q1(poorest)	47.1	2.3	22.8	1.9	11.1	0.8	16.6	1.0	2.1	0.3	0.2	0.2	1,017
Q2	46.4	3.1	27.8	2.6	10.3	1.4	13.3	1.0	2.2	0.8	0.0	0.0	1,023
Q3	50.7	1.8	23.9	1.1	12.3	1.8	11.5	1.8	1.2	0.4	0.4	0.1	1,015
Q4	55.7	1.7	24.8	1.4	11.1	1.2	7.1	1.4	1.3	0.6	0.1	0.1	969
Q5(richest)	60.6	2.5	21.0	1.6	11.0	1.9	5.1	1.2	2.1	1.0	0.3	0.2	989
M	34.8	5.5	24.4	5.5	13.8	3.8	26.5	3.6	0.5	0.5	0.0	0.0	284
Age													
18-29	59.7	1.5	23.0	1.4	7.4	0.8	8.1	0.8	1.5	0.4	0.3	0.1	2,351
30-44	55.3	1.5	20.9	1.4	11.6	1.4	11.0	1.2	1.2	0.4	0.1	0.0	1,538
45-59	37.5	2.4	29.5	2.9	16.5	3.1	14.8	1.8	1.8	0.5	0.0	0.0	845
60-69	28.3	4.3	34.2	4.0	15.0	3.1	19.3	3.6	2.9	1.5	0.3	0.3	333
70-79	21.4	3.6	20.3	3.6	25.9	3.0	29.3	4.3	3.1	1.4	0.0	0.0	176
80+	6.1	3.2	27.3	7.4	21.7	7.4	28.7	4.9	16.1	4.1	0.0	0.0	54
M	0.0	0.0	0.0	0.0	0.0	0.0	0.0	0.0	0.0	0.0	0.0	0.0	
All	51.1	1.2	24.1	1.0	11.3	0.6	11.6	0.5	1.7	0.2	0.2	0.1	5,297

6.09 Difficulty with 'concentrating or remembering things' in last 30 days - q2050

	None	SE	Mild	SE	Moderate	SE	Sever	SE	Extreme/ Cannot do	SE	Missing	SE	N
Gender													
Male	75.7	1.3	14.0	0.8	4.1	0.7	5.5	0.7	0.5	0.2	0.2	0.2	2,584
Female	67.3	1.1	18.0	1.0	6.7	0.5	7.6	1.0	0.3	0.1	0.1	0.1	2,713
M	0.0	0.0	0.0	0.0	0.0	0.0	0.0	0.0	0.0	0.0	0.0	0.0	
Residence													
Urban	76.6	2.4	15.3	1.9	4.8	0.8	2.6	1.2	0.4	0.2	0.2	0.1	818
Rural	70.4	0.9	16.2	0.6	5.6	0.5	7.3	0.8	0.4	0.1	0.2	0.1	4,479
M	0.0	0.0	0.0	0.0	0.0	0.0	0.0	0.0	0.0	0.0	0.0	0.0	
Income													
Q1(poorest)	70.5	1.8	15.0	1.3	5.0	1.0	9.0	1.1	0.3	0.1	0.2	0.2	1,017
Q2	69.8	1.5	16.0	1.0	6.1	1.2	7.7	1.4	0.3	0.3	0.1	0.1	1,023
Q3	70.5	1.8	18.2	1.9	6.7	1.2	4.1	0.5	0.2	0.1	0.3	0.3	1,015
Q4	75.7	1.6	15.5	1.4	4.3	1.1	4.3	0.9	0.1	0.1	0.1	0.1	969
Q5(richest)	72.9	2.2	14.7	1.9	5.5	1.0	5.5	1.3	1.2	0.6	0.3	0.2	989
M	63.5	3.9	18.4	2.7	4.1	1.6	13.9	4.3	0.1	0.1	0.0	0.0	284
Age													
18-29	76.3	1.0	13.9	1.1	3.8	0.4	5.1	0.8	0.5	0.2	0.3	0.2	2,351
30-44	77.6	1.6	11.9	1.2	4.9	0.8	5.3	1.0	0.2	0.1	0.1	0.1	1,538
45-59	60.1	3.1	22.6	2.0	8.3	1.4	8.5	1.7	0.5	0.6	0.0	0.0	845
60-69	55.6	3.6	26.2	3.0	5.9	1.6	11.8	2.4	0.1	0.1	0.3	0.3	333
70-79	48.4	5.5	24.2	3.5	14.0	3.6	13.3	2.9	0.2	0.2	0.0	0.0	176
80+	30.2	5.3	34.3	8.7	15.6	4.2	18.3	5.5	1.7	1.5	0.0	0.0	54
M	0.0	0.0	0.0	0.0	0.0	0.0	0.0	0.0	0.0	0.0	0.0	0.0	
All	71.4	0.8	16.0	0.6	5.4	0.4	6.5	0.7	0.4	0.1	0.2	0.1	5,297

6.10 Difficulty with 'learning a new task' in last 30 days - q2051

	None	SE	Mild	SE	Moderate	SE	Sever	SE	Extreme/ Cannot do	SE	Missing	SE	N
Gender													
Male	78.6	1.2	12.8	0.7	3.3	0.4	3.0	0.4	0.2	0.1	2.1	0.4	2,584
Female	71.1	1.1	16.0	0.9	5.0	0.6	4.6	0.6	0.7	0.2	2.6	0.5	2,713
M	0.0	0.0	0.0	0.0	0.0	0.0	0.0	0.0	0.0	0.0	0.0	0.0	
Residence													
Urban	80.3	3.7	9.2	1.4	3.3	0.9	2.4	1.1	0.2	0.2	4.6	2.2	818
Rural	73.8	0.9	15.4	0.6	4.4	0.4	4.1	0.3	0.5	0.1	1.9	0.2	4,479
M	0.0	0.0	0.0	0.0	0.0	0.0	0.0	0.0	0.0	0.0	0.0	0.0	
Income													
Q1(poorest)	71.4	2.0	16.9	1.8	4.0	0.8	4.0	0.8	0.8	0.3	2.7	0.6	1,017
Q2	72.3	1.8	15.1	1.2	3.8	0.9	5.6	0.7	0.4	0.3	2.7	0.5	1,023
Q3	75.0	1.8	14.9	1.6	4.9	0.8	2.5	0.7	0.6	0.4	2.0	0.4	1,015
Q4	79.8	1.6	12.4	1.3	3.5	0.5	2.5	0.5	0.2	0.1	1.7	0.5	969
Q5(richest)	76.2	2.3	13.0	1.6	4.0	0.7	3.8	1.3	0.2	0.2	2.8	0.8	989
M	72.8	3.5	12.8	2.2	6.5	1.1	6.2	2.8	0.5	0.4	1.2	0.8	284
Age													
18-29	78.5	1.5	12.8	1.1	2.8	0.4	2.0	0.3	0.6	0.2	3.2	0.8	2,351
30-44	80.5	1.6	10.8	1.2	3.8	0.8	3.1	0.8	0.1	0.1	1.7	0.3	1,538
45-59	65.8	3.2	20.1	2.8	6.8	1.0	5.8	1.1	0.1	0.1	1.4	0.5	845
60-69	61.8	4.6	20.5	2.7	5.8	1.4	9.9	2.0	0.0	0.0	2.0	0.9	333
70-79	52.4	5.4	25.0	3.8	9.2	2.8	10.9	2.7	1.6	0.9	1.0	0.3	176
80+	43.0	5.0	22.7	4.0	6.3	2.6	12.5	4.2	11.5	3.8	4.0	2.4	54
M	0.0	0.0	0.0	0.0	0.0	0.0	0.0	0.0	0.0	0.0	0.0	0.0	
All	74.8	1.0	14.4	0.6	4.2	0.4	3.8	0.3	0.5	0.1	2.3	0.4	5,297

6.11 Difficulty with 'personal relationships or participation in the community' in last 30 days - q2060

	None	SE	Mild	SE	Moderate	SE	Sever	SE	Extreme/ Cannot do	SE	Missing	SE	N
Gender													
Male	83.9	1.3	9.5	0.9	2.7	0.3	2.9	0.6	0.6	0.1	0.4	0.2	2,584
Female	81.2	1.2	10.0	0.7	4.2	0.6	3.8	0.4	0.4	0.1	0.3	0.1	2,713
M	0.0	0.0	0.0	0.0	0.0	0.0	0.0	0.0	0.0	0.0	0.0	0.0	
Residence													
Urban	86.7	1.5	7.5	1.3	4.7	1.2	0.4	0.2	0.3	0.2	0.5	0.3	818
Rural	81.8	1.2	10.2	0.7	3.3	0.4	3.9	0.6	0.5	0.1	0.3	0.2	4,479
M	0.0	0.0	0.0	0.0	0.0	0.0	0.0	0.0	0.0	0.0	0.0	0.0	
Income													
Q1(poorest)	80.0	2.2	9.5	1.4	4.0	0.6	5.6	1.2	0.6	0.2	0.3	0.2	1,017
Q2	83.6	1.5	9.9	1.2	2.7	0.5	2.7	0.6	0.7	0.3	0.3	0.2	1,023
Q3	84.5	2.1	8.6	1.2	3.3	0.6	2.9	1.0	0.3	0.2	0.4	0.3	1,015
Q4	83.9	1.2	10.4	1.3	3.1	0.8	1.9	0.6	0.4	0.2	0.3	0.1	969
Q5(richest)	81.4	1.9	10.2	1.7	4.5	1.2	2.9	0.9	0.7	0.3	0.4	0.2	989
M	79.4	2.8	10.6	1.6	3.2	2.3	6.0	1.6	0.0	0.0	0.7	0.8	284
Age													
18-29	85.0	1.3	9.2	0.9	2.0	0.4	2.8	0.6	0.4	0.1	0.5	0.3	2,351
30-44	83.4	1.6	8.5	0.8	4.3	0.7	3.3	0.7	0.5	0.2	0.1	0.0	1,538
45-59	79.1	1.6	11.4	1.0	4.0	0.9	4.7	1.4	0.4	0.3	0.4	0.3	845
60-69	80.9	3.9	9.6	2.0	5.7	2.6	2.7	1.1	0.7	0.5	0.6	0.4	333
70-79	71.4	4.3	18.5	3.4	5.7	1.5	2.9	1.2	1.2	0.7	0.2	0.2	176
80+	47.6	6.2	18.7	5.5	18.4	5.8	12.8	5.6	2.5	1.6	0.0	0.0	54
M	0.0	0.0	0.0	0.0	0.0	0.0	0.0	0.0	0.0	0.0	0.0	0.0	
All	82.5	1.0	9.8	0.6	3.5	0.4	3.3	0.5	0.5	0.1	0.4	0.2	5,297

6.12 Difficulty with 'dealing with conflicts and tensions' in last 30 days - q2061

	None	SE	Mild	SE	Moderate	SE	Sever	SE	Extreme/ Cannot do	SE	Missing	SE	N
Gender													
Male	84.3	1.6	9.6	1.1	2.7	0.4	1.6	0.4	1.2	0.2	0.5	0.2	2,584
Female	82.9	1.1	8.8	0.5	4.0	0.5	3.0	0.5	0.8	0.2	0.4	0.2	2,713
M	0.0	0.0	0.0	0.0	0.0	0.0	0.0	0.0	0.0	0.0	0.0	0.0	
Residence													
Urban	84.6	1.8	8.0	1.8	4.2	1.2	1.6	0.8	1.0	0.3	0.5	0.3	818
Rural	83.4	1.4	9.4	0.7	3.2	0.4	2.4	0.4	1.0	0.1	0.5	0.2	4,479
M	0.0	0.0	0.0	0.0	0.0	0.0	0.0	0.0	0.0	0.0	0.0	0.0	
Income													
Q1(poorest)	81.1	1.8	9.9	0.9	4.1	0.7	3.6	0.9	1.1	0.3	0.3	0.2	1,017
Q2	85.0	2.1	9.2	1.4	2.4	0.5	1.9	0.6	1.2	0.4	0.3	0.2	1,023
Q3	86.6	2.5	7.3	1.4	2.7	0.7	2.2	0.6	0.8	0.5	0.4	0.3	1,015
Q4	85.1	1.2	8.9	1.1	3.2	0.8	1.2	0.5	1.1	0.4	0.6	0.3	969
Q5(richest)	80.6	1.7	10.9	1.5	4.5	1.2	2.3	0.7	0.9	0.2	0.8	0.3	989
M	82.8	3.0	9.2	2.0	2.9	1.5	3.3	1.6	1.0	1.0	0.7	0.8	284
Age													
18-29	84.8	1.3	9.3	1.0	1.8	0.3	1.9	0.4	1.5	0.4	0.7	0.3	2,351
30-44	84.9	1.9	7.6	0.9	4.3	0.8	2.4	0.5	0.7	0.3	0.2	0.2	1,538
45-59	82.1	1.7	11.0	1.0	3.0	0.5	2.9	0.9	0.7	0.4	0.3	0.2	845
60-69	82.7	3.4	7.2	1.3	7.4	3.2	1.3	0.6	0.1	0.1	1.3	0.6	333
70-79	75.5	4.2	13.4	3.1	7.0	1.5	3.9	1.6	0.0	0.0	0.2	0.2	176
80+	51.4	6.2	25.4	6.1	12.1	2.4	7.3	3.9	3.7	2.6	0.0	0.0	54
M	0.0	0.0	0.0	0.0	0.0	0.0	0.0	0.0	0.0	0.0	0.0	0.0	
All	83.6	1.2	9.2	0.7	3.4	0.4	2.3	0.4	1.0	0.1	0.5	0.2	5,297

6.13 Difficulty with 'seeing and recognizing a person you know across the road (20m)' in last 30 days - q2071

	None	SE	Mild	SE	Moderate	SE	Sever	SE	Extreme/ Cannot do	SE	Missing	SE	N
Gender													
Male	85.8	1.1	6.4	1.0	3.0	0.6	3.8	0.5	0.7	0.4	0.3	0.2	2,584
Female	81.5	1.3	7.4	1.1	4.6	0.4	5.1	0.6	1.0	0.2	0.4	0.1	2,713
M	0.0	0.0	0.0	0.0	0.0	0.0	0.0	0.0	0.0	0.0	0.0	0.0	
Residence													
Urban	88.1	2.1	3.5	0.6	4.5	1.0	3.2	0.8	0.3	0.2	0.5	0.2	818
Rural	82.8	1.2	7.5	1.2	3.7	0.3	4.7	0.4	1.0	0.3	0.4	0.1	4,479
M	0.0	0.0	0.0	0.0	0.0	0.0	0.0	0.0	0.0	0.0	0.0	0.0	
Income													
Q1(poorest)	82.0	1.8	7.3	1.1	3.9	0.7	6.1	0.8	0.5	0.2	0.2	0.2	1,017
Q2	84.3	3.0	8.0	1.5	3.8	0.9	3.2	1.0	0.5	0.2	0.2	0.1	1,023
Q3	83.1	1.2	7.1	1.5	2.6	0.6	5.9	1.1	0.8	0.2	0.5	0.2	1,015
Q4	86.5	1.6	6.1	1.0	3.7	0.7	2.3	0.6	0.6	0.5	0.8	0.3	969
Q5(richest)	84.0	1.6	5.9	1.1	5.1	1.1	3.8	0.8	0.9	0.4	0.3	0.2	989
M	77.4	3.2	6.3	3.6	3.6	1.4	8.3	1.6	4.5	3.0	0.0	0.0	284
Age													
18-29	90.5	1.0	4.7	0.9	1.8	0.4	2.1	0.4	0.2	0.2	0.6	0.2	2,351
30-44	89.4	1.1	5.0	0.8	2.3	0.5	3.0	0.4	0.0	0.0	0.3	0.1	1,538
45-59	73.6	2.9	11.7	2.3	6.4	1.1	6.7	1.0	1.5	0.5	0.1	0.2	845
60-69	61.2	5.0	12.1	1.7	10.1	2.0	13.6	2.6	3.0	1.5	0.0	0.0	333
70-79	48.8	3.6	15.2	2.8	15.0	2.7	15.0	3.4	6.1	2.2	0.0	0.0	176
80+	26.1	5.9	19.8	4.8	16.4	3.7	24.2	7.4	13.4	5.8	0.0	0.0	54
M	0.0	0.0	0.0	0.0	0.0	0.0	0.0	0.0	0.0	0.0	0.0	0.0	
All	83.6	1.0	6.9	1.0	3.8	0.3	4.5	0.4	0.9	0.2	0.4	0.1	5,297

6.14 Difficulty with 'seeing an object at arm's length or in reading' in last 30 days - q2072

	None	SE	Mild	SE	Moderate	SE	Sever	SE	Extreme/ Cannot do	SE	Missing	SE	N
Gender													
Male	91.1	0.9	4.2	0.4	2.5	0.5	1.4	0.3	0.6	0.2	0.3	0.2	2,584
Female	87.6	0.6	5.8	0.4	3.1	0.4	2.8	0.4	0.3	0.1	0.4	0.1	2,713
M	0.0	0.0	0.0	0.0	0.0	0.0	0.0	0.0	0.0	0.0	0.0	0.0	
Residence													
Urban	89.4	1.9	4.0	0.8	4.2	1.2	1.2	0.6	0.7	0.4	0.5	0.2	818
Rural	89.3	0.4	5.2	0.3	2.6	0.2	2.3	0.3	0.4	0.1	0.3	0.1	4,479
M	0.0	0.0	0.0	0.0	0.0	0.0	0.0	0.0	0.0	0.0	0.0	0.0	
Income													
Q1(poorest)	89.0	1.0	5.3	0.6	3.1	0.7	2.2	0.6	0.2	0.1	0.2	0.2	1,017
Q2	90.2	1.7	4.9	1.2	2.6	0.6	1.7	0.5	0.4	0.2	0.2	0.1	1,023
Q3	89.7	1.5	4.2	0.5	2.1	0.4	3.0	1.0	0.4	0.3	0.7	0.2	1,015
Q4	91.4	1.3	4.6	1.0	2.2	0.6	1.3	0.4	0.2	0.1	0.3	0.2	969
Q5(richest)	87.1	1.5	5.5	0.8	4.7	0.9	1.8	0.7	0.7	0.4	0.3	0.2	989
M	86.3	3.6	7.0	2.0	1.2	0.7	3.8	1.2	1.6	1.2	0.0	0.0	284
Age													
18-29	95.3	0.6	2.4	0.2	1.1	0.3	0.4	0.2	0.2	0.1	0.6	0.2	2,351
30-44	93.8	0.8	3.3	0.5	2.0	0.4	0.7	0.3	0.0	0.0	0.2	0.1	1,538
45-59	80.9	2.7	7.2	1.1	5.0	1.1	6.4	1.3	0.5	0.3	0.0	0.0	845
60-69	69.7	4.0	17.0	3.9	6.3	1.6	5.4	1.2	1.3	0.7	0.3	0.3	333
70-79	59.9	3.6	16.8	2.8	13.0	2.4	6.6	2.2	3.7	2.2	0.0	0.0	176
80+	49.7	5.6	21.2	4.8	14.2	3.7	11.1	3.8	3.8	2.7	0.0	0.0	54
M	0.0	0.0	0.0	0.0	0.0	0.0	0.0	0.0	0.0	0.0	0.0	0.0	
All	89.3	0.5	5.0	0.3	2.8	0.2	2.1	0.3	0.4	0.1	0.3	0.1	5,297

6.15 Problem with 'sleeping' in last 30 days - q2080

	None	SE	Mild	SE	Moderate	SE	Sever	SE	Extreme/ Cannot do	SE	Missing	SE	N
Gender													
Male	74.5	1.0	13.6	0.9	4.5	0.7	6.7	0.6	0.5	0.2	0.3	0.2	2,584
Female	72.4	1.2	13.8	1.0	5.5	0.5	7.2	0.8	0.8	0.1	0.3	0.1	2,713
M	0.0	0.0	0.0	0.0	0.0	0.0	0.0	0.0	0.0	0.0	0.0	0.0	
Residence													
Urban	76.5	2.8	12.1	1.8	5.9	1.0	5.0	1.6	0.2	0.2	0.3	0.2	818
Rural	72.8	0.9	14.0	0.7	4.8	0.5	7.3	0.7	0.7	0.2	0.3	0.1	4,479
M	0.0	0.0	0.0	0.0	0.0	0.0	0.0	0.0	0.0	0.0	0.0	0.0	
Income													
Q1(poorest)	74.3	1.6	12.7	1.0	4.2	0.7	7.9	1.0	0.6	0.2	0.3	0.2	1,017
Q2	71.1	2.2	13.6	1.1	5.1	0.7	8.6	1.8	1.4	0.2	0.2	0.1	1,023
Q3	72.5	1.9	16.7	1.8	4.7	1.0	5.1	1.2	0.6	0.2	0.4	0.3	1,015
Q4	75.6	2.4	12.9	1.6	5.4	1.4	5.3	1.3	0.4	0.3	0.4	0.2	969
Q5(richest)	75.1	2.0	11.3	1.4	6.3	1.0	6.6	1.4	0.4	0.2	0.3	0.2	989
M	68.0	2.4	17.6	2.7	2.7	1.2	11.0	1.7	0.7	0.8	0.0	0.0	284
Age													
18-29	76.9	1.3	13.1	0.9	3.8	0.5	5.4	0.6	0.3	0.1	0.5	0.2	2,351
30-44	76.8	1.6	12.3	1.0	4.2	0.6	5.7	1.2	0.8	0.3	0.2	0.1	1,538
45-59	66.4	2.4	14.6	2.0	7.0	1.4	10.6	1.7	1.5	0.6	0.0	0.0	845
60-69	65.9	4.5	15.3	2.4	6.3	1.5	11.4	3.2	0.7	0.4	0.3	0.3	333
70-79	56.4	4.6	22.4	4.1	14.3	3.2	6.9	1.6	0.0	0.0	0.0	0.0	176
80+	32.0	6.8	25.5	6.3	12.9	4.0	25.7	6.1	3.9	2.6	0.0	0.0	54
M	0.0	0.0	0.0	0.0	0.0	0.0	0.0	0.0	0.0	0.0	0.0	0.0	
All	73.4	0.9	13.7	0.7	5.0	0.5	6.9	0.6	0.7	0.1	0.3	0.1	5,297

6.16 Problem with 'feeling rested and refreshed' in last 30 days - q2081

	None	SE	Mild	SE	Moderate	SE	Sever	SE	Extreme/ Cannot do	SE	Missing	SE	N
Gender													
Male	74.1	1.1	13.9	1.1	5.5	0.6	5.8	0.6	0.4	0.2	0.3	0.2	2,584
Female	70.8	1.6	14.9	0.9	5.7	0.6	7.7	0.6	0.5	0.1	0.5	0.1	2,713
M	0.0	0.0	0.0	0.0	0.0	0.0	0.0	0.0	0.0	0.0	0.0	0.0	
Residence													
Urban	75.7	3.9	12.0	2.3	7.4	2.0	4.2	1.4	0.1	0.1	0.5	0.2	818
Rural	71.8	1.1	14.8	0.8	5.3	0.5	7.2	0.5	0.5	0.1	0.4	0.1	4,479
M	0.0	0.0	0.0	0.0	0.0	0.0	0.0	0.0	0.0	0.0	0.0	0.0	
Income													
Q1(poorest)	69.9	2.0	15.9	1.2	6.4	1.5	6.7	1.0	0.5	0.1	0.5	0.3	1,017
Q2	68.4	2.4	15.9	1.4	4.8	0.6	9.9	1.7	0.9	0.6	0.2	0.1	1,023
Q3	74.0	1.8	14.8	1.3	4.8	0.7	5.4	1.1	0.4	0.2	0.5	0.1	1,015
Q4	75.3	1.9	13.9	1.8	5.3	0.7	4.9	1.4	0.1	0.2	0.5	0.3	969
Q5(richest)	75.0	2.2	10.9	1.3	7.5	1.4	6.0	1.3	0.2	0.1	0.4	0.2	989
M	71.3	2.4	16.0	3.0	3.0	1.3	9.7	1.8	0.0	0.0	0.0	0.0	284
Age													
18-29	76.9	1.4	12.9	1.1	4.5	0.5	4.8	0.6	0.4	0.2	0.6	0.2	2,351
30-44	75.0	1.9	13.0	0.9	6.1	1.1	5.5	0.9	0.2	0.1	0.2	0.1	1,538
45-59	65.6	2.5	17.6	2.2	5.8	0.9	10.3	1.5	0.5	0.2	0.2	0.2	845
60-69	64.3	3.9	16.3	3.2	5.2	1.4	12.8	2.5	0.2	0.2	1.1	0.7	333
70-79	51.4	4.5	25.6	4.2	13.5	2.9	9.0	2.2	0.5	0.5	0.0	0.0	176
80+	30.0	6.0	22.0	5.5	14.6	3.6	26.0	4.1	7.4	2.8	0.0	0.0	54
M	0.0	0.0	0.0	0.0	0.0	0.0	0.0	0.0	0.0	0.0	0.0	0.0	
All	72.4	1.1	14.4	0.7	5.6	0.5	6.8	0.5	0.4	0.1	0.4	0.1	5,297

6.17 Problem with 'feeling sad, low, or depressed' in last 30 days - q2090

	None	SE	Mild	SE	Moderate	SE	Sever	SE	Extreme/ Cannot do	SE	Missing	SE	N
Gender													
Male	67.5	1.7	16.9	1.5	6.2	0.5	7.4	0.8	1.7	0.4	0.3	0.2	2,584
Female	64.9	1.4	16.3	1.2	6.9	0.8	9.8	0.8	1.7	0.3	0.3	0.1	2,713
M	0.0	0.0	0.0	0.0	0.0	0.0	0.0	0.0	0.0	0.0	0.0	0.0	
Residence													
Urban	69.0	4.3	14.2	0.9	6.7	1.4	7.2	1.9	2.2	0.8	0.7	0.4	818
Rural	65.7	1.6	17.0	1.4	6.5	0.5	8.9	0.6	1.6	0.2	0.3	0.1	4,479
M	0.0	0.0	0.0	0.0	0.0	0.0	0.0	0.0	0.0	0.0	0.0	0.0	
Income													
Q1(poorest)	64.3	1.8	16.9	1.4	6.3	0.5	10.2	1.0	1.9	0.6	0.4	0.2	1,017
Q2	65.9	3.3	17.9	2.8	5.5	1.0	9.3	1.3	1.3	0.4	0.2	0.1	1,023
Q3	63.4	2.0	19.7	2.2	7.0	1.0	7.6	1.1	2.0	0.7	0.3	0.3	1,015
Q4	72.0	2.4	12.5	1.9	6.5	0.9	6.8	0.9	2.0	0.8	0.2	0.1	969
Q5(richest)	67.0	3.1	15.5	1.6	7.5	1.0	8.4	1.7	1.4	0.5	0.3	0.2	989
M	61.5	5.2	17.6	5.0	6.5	1.2	11.7	1.8	1.6	0.8	1.1	0.8	284
Age													
18-29	70.3	2.3	16.2	1.7	4.8	0.6	7.0	0.7	1.2	0.2	0.5	0.2	2,351
30-44	67.7	2.4	14.4	1.9	6.8	0.9	8.8	1.0	2.1	0.5	0.2	0.1	1,538
45-59	58.7	2.2	19.5	1.9	8.3	1.8	11.7	1.4	1.9	0.5	0.0	0.0	845
60-69	62.3	2.9	16.5	2.7	7.4	2.1	10.3	2.1	2.7	0.8	0.7	0.5	333
70-79	51.2	5.9	23.5	5.7	14.3	2.5	9.9	1.9	1.1	0.6	0.0	0.0	176
80+	32.4	5.6	31.2	6.7	14.8	6.4	16.8	4.4	4.7	3.2	0.0	0.0	54
M	0.0	0.0	0.0	0.0	0.0	0.0	0.0	0.0	0.0	0.0	0.0	0.0	
All	66.2	1.5	16.6	1.2	6.5	0.5	8.7	0.6	1.7	0.2	0.3	0.1	5,297

6.18 Problem with 'worry or anxiety' in last 30 days - q2091

	None	SE	Mild	SE	Moderate	SE	Sever	SE	Extreme/ Cannot do	SE	Missing	SE	N
Gender													
Male	67.6	1.2	15.2	1.1	6.4	0.6	8.8	0.8	1.7	0.3	0.3	0.2	2,584
Female	62.2	1.2	16.5	0.9	6.3	0.6	12.6	1.0	2.0	0.4	0.4	0.1	2,713
M	0.0	0.0	0.0	0.0	0.0	0.0	0.0	0.0	0.0	0.0	0.0	0.0	
Residence													
Urban	68.4	4.0	14.1	1.3	6.1	1.0	8.4	1.7	2.4	1.0	0.6	0.4	818
Rural	64.2	1.1	16.2	0.9	6.4	0.4	11.2	0.6	1.8	0.2	0.3	0.1	4,479
M	0.0	0.0	0.0	0.0	0.0	0.0	0.0	0.0	0.0	0.0	0.0	0.0	
Income													
Q1(poorest)	61.3	1.7	15.8	1.2	5.8	0.6	14.5	1.2	2.1	0.5	0.5	0.3	1,017
Q2	63.2	2.8	17.5	2.1	6.1	1.0	11.3	2.0	1.8	0.6	0.1	0.1	1,023
Q3	64.3	2.0	17.3	2.1	7.4	1.0	8.9	1.1	1.9	0.7	0.4	0.3	1,015
Q4	69.7	1.8	13.4	1.7	6.2	1.0	9.0	1.5	1.5	0.6	0.2	0.1	969
Q5(richest)	67.7	3.0	14.0	1.5	6.6	1.0	9.0	1.6	2.1	0.6	0.5	0.3	989
M	59.4	3.8	20.0	3.1	5.0	2.2	13.7	2.2	1.5	0.8	0.4	0.4	284
Age													
18-29	69.4	1.7	14.3	1.2	5.2	0.5	8.9	0.8	1.7	0.3	0.5	0.2	2,351
30-44	65.4	1.8	14.6	1.2	7.0	0.8	11.0	0.9	1.9	0.4	0.2	0.1	1,538
45-59	57.4	2.0	19.7	2.0	7.4	1.5	13.6	1.2	1.8	0.5	0.1	0.1	845
60-69	61.6	3.3	16.4	3.2	5.8	1.7	13.5	2.7	2.0	1.4	0.7	0.5	333
70-79	52.5	5.4	24.2	4.3	9.8	2.1	11.2	2.0	2.3	1.3	0.0	0.0	176
80+	29.8	5.9	32.4	5.1	11.9	3.8	20.2	5.2	5.7	3.3	0.0	0.0	54
M	0.0	0.0	0.0	0.0	0.0	0.0	0.0	0.0	0.0	0.0	0.0	0.0	
All	64.9	1.1	15.9	0.8	6.3	0.4	10.7	0.6	1.9	0.3	0.3	0.1	5,297

7.1 Self-reported utilization of health services and perceived unmet need

	<u>Ambulatory Adult</u>		<u>Ambulatory Child</u>		<u>Inpatient Adult</u>		<u>Inpatient Child</u>		<u>Informal Care</u>		<u>Unmet Care</u>		<u>Non use</u>	
	%	SE	%	SE	%	SE	%	SE	%	SE	%	SE	%	SE
Sex														
Female	29.2	1.3	23.5	1.0	2.9	0.8	1.5	0.2	7.6	0.7	12.6	1.0	22.7	1.1
Male	31.3	1.7	18.2	1.1	1.4	0.4	0.8	0.2	8.2	0.8	10.6	1.0	29.5	1.2
Area of Residence														
Urban	30.3	3.1	22.3	1.8	1.4	0.8	3.0	0.9	2.4	0.6	4.2	1.0	36.4	3.8
Rural	30.1	1.1	21.0	1.1	2.3	0.4	1.0	0.2	8.4	0.5	12.6	0.9	24.6	1.0
Age Group														
18-29y	29.5	1.2	25.5	1.3	2.0	0.3	1.4	0.2	7.6	1.1	11.2	1.0	22.8	1.5
30-44y	29.1	1.8	26.7	1.7	2.9	1.4	1.0	0.3	7.7	1.1	9.6	0.6	22.9	1.6
45-59y	32.4	2.5	9.9	1.9	3.0	0.9	1.5	0.5	8.2	1.3	15.7	2.1	29.3	2.8
60-69y	37.1	3.4	5.2	1.7	0.3	0.2	0.4	0.4	9.2	2.5	12.6	2.4	35.2	3.0
70+y	27.3	3.6	2.7	1.0	0.7	0.4	0.1	0.1	8.2	3.9	15.4	3.3	45.7	4.1
Education Years														
0	25.2	2.7	16.8	1.8	2.2	0.4	1.4	0.6	8.2	0.7	17.4	2.0	28.7	2.2
1-5	32.9	1.5	19.3	2.1	2.4	1.0	1.3	0.3	7.5	1.2	12.7	1.5	24.0	1.8
6-11	30.6	1.8	26.9	1.1	2.1	0.4	1.0	0.2	7.9	1.5	7.8	1.0	23.7	1.3
12+	33.8	2.6	19.7	2.3	2.6	1.0	1.3	0.5	6.8	1.7	6.1	1.3	29.8	2.2
Income Quintiles														
Q1	23.9	1.8	23.1	1.5	1.2	0.4	1.5	0.4	7.8	0.9	12.7	2.1	29.8	2.0
Q2	31.6	1.5	20.9	1.2	2.9	1.1	1.1	0.5	6.4	0.9	12.6	1.3	24.4	1.4
Q3	30.4	2.7	22.1	2.2	2.9	0.8	1.3	0.4	8.4	1.1	10.9	1.8	23.9	2.1
Q4	28.2	1.9	21.9	1.8	1.2	0.3	0.6	0.3	7.7	0.9	12.9	2.2	27.4	2.2
Q5	37.7	2.9	19.8	2.1	2.7	1.0	1.4	0.5	6.2	1.6	5.2	1.3	26.9	2.1
Ownership														
Government	43.2	1.3	27.9	1.5	2.7	0.4	1.6	0.3	5.7	0.7	9.3	0.6	9.6	0.8
Private	38.6	3.7	28.6	1.9	2.6	0.7	2.0	0.6	5.2	0.7	10.8	2.8	12.3	0.8
NGO	34.0	15.4	10.6	5.6	27.9	17.8	0.0	0.0	0.5	0.6	12.2	11.8	14.8	5.9
Other	26.7	11.9	37.9	16.3	8.8	10.4	0.0	0.0	2.5	2.6	8.9	7.6	15.2	8.4
TOTAL	30.1	1.1	21.2	1.0	2.2	0.4	1.2	0.2	7.8	0.5	11.8	0.8	25.7	0.9

This table presents the percent of people reporting utilization of health services when they last needed care. It combines information from Q7000, Q7001 and Q7016. Utilization was recorded in the WHS in three separate categories: ambulatory care, hospital inpatient care, and informal care. Time cut-offs for utilization recall used here are 1 year for ambulatory care and informal care, and 3 years for hospital inpatient care. Utilization of ambulatory and inpatient care services

have been further sub-divided into "adult" and "child" categories. In addition to utilization, two other related aspects are being reported here - unmet need and non-use (regardless of expressed need) of health services. Unmet need was estimated on the basis of responses to Q7000 and Q7004. Non-use of health services is simply the percent of respondents who reported no need in Q7000 or did not utilize services in the time cut-offs mentioned above.

Results are reported for the total WHS sample (category: "TOTAL"), and by the following sample sub-groups: sex, area of residence, age group, years of education, income quintiles, and ownership (of health facility). Mean values and standard errors (SE) are reported for each category.

Sub-groups common to other tables were constructed in the same manner. Common sub-groups include sex (Q1001), area of residence (Q0104), age group (regrouping of reported age in Q1002), years of education (Q1010) and income quintiles. To determine income and subsequently income quintiles, an asset index was constructed for each household using responses to section 0700 on "Permanent Income Indicators" from the WHS household questionnaire.

Ownership was constructed uniquely for the responsiveness section's tables. There are four categories of ownership: "Operated by the government" (Government), "Privately operated" (Private), "NGO" and "Other". To construct the ownership sub-group, information was combined from (a) Q7204, Q7205 and Q7301 for those utilizing ambulatory services, and (b) Q7200, Q7201 and Q7401 for those utilizing hospital inpatient services.

7.2 Patient assessed characteristics of ambulatory health services

	Patients visiting a medical doctor, of those visiting any health care provider		Patients rating characteristics of health care provider as adequate/more than adequate						Mean time taken to reach health facility (in minutes)		Patients using private car or motorcycle to reach facility		Mean cost for an ambulatory care visit (local currency)		Percent of population perceiving discrimination	
	%	SE	%	SE	%	SE	%	SE	Minutes	SE	%	SE	mean cost	SE	%	SE
Sex																
Female	52.8	2.6	91.1	0.7	89.1	1.4	83.8	1.2	68.6	5.8	1.2	0.3	102.6	18.3	5.2	0.8
Male	58.4	2.9	89.8	1.6	86.4	1.5	79.0	1.6	67.7	4.2	2.6	0.9	99.0	10.4	4.9	0.7
Area of Residence																
Urban	56.4	7.6	88.9	2.3	87.6	2.4	86.9	2.2	34.9	2.5	5.5	4.1	163.4	35.3	3.3	1.5
Rural	55.4	2.6	90.6	0.9	87.9	1.2	81.1	1.0	71.1	5.0	1.5	0.4	94.8	11.8	5.2	0.6
Age Group																
18-29y	56.5	3.0	91.5	1.2	88.4	1.7	82.0	1.7	67.6	5.5	1.6	0.6	89.8	7.6	4.7	0.6
30-44y	55.3	3.7	87.5	1.4	83.4	2.0	79.2	1.6	66.6	7.3	3.1	1.2	121.5	22.4	4.1	1.2
45-59y	50.4	5.8	91.7	1.8	91.8	1.8	85.3	2.1	70.7	6.5	1.5	0.5	106.0	26.0	6.2	2.2
60-69y	58.9	7.6	93.6	2.4	92.4	2.3	80.1	4.6	71.2	10.4	1.2	0.8	102.2	23.9	8.1	3.8
70+y	56.6	6.6	87.5	4.6	88.3	4.1	80.6	6.2	72.2	7.2	0.5	0.4	81.9	24.6	7.6	3.6
Education Years																
0	58.2	3.4	94.9	1.1	93.8	1.3	88.1	2.1	69.8	13.2	0.6	0.4	64.2	8.7	9.9	2.1
1-5	55.4	4.3	92.3	1.4	88.1	1.8	80.4	1.5	74.2	4.7	1.5	1.0	90.9	7.2	5.1	1.0
6-11	53.6	2.8	88.1	1.5	85.9	2.0	79.5	2.5	69.4	5.1	1.7	0.6	127.9	27.4	4.4	0.9
12+	62.5	4.8	89.7	2.0	87.9	2.3	80.4	3.3	41.5	4.1	6.4	2.6	124.0	19.4	2.6	0.8
Income Quintiles																
Q1	51.5	3.4	89.7	1.6	86.1	2.2	80.1	1.1	82.2	9.4	0.5	0.3	65.5	3.4	5.2	1.5
Q2	48.0	3.3	89.3	1.3	88.4	1.2	80.2	1.6	75.3	6.6	1.0	1.0	59.3	5.2	4.1	0.7
Q3	56.1	2.9	92.1	1.6	88.0	2.6	80.0	2.4	75.7	9.4	1.6	0.7	81.0	7.3	4.6	1.4
Q4	54.2	3.7	89.8	1.9	88.7	1.8	80.8	1.8	59.7	4.8	1.8	1.2	98.3	12.2	5.7	2.5
Q5	63.8	4.5	92.4	1.6	88.1	2.9	85.7	2.0	51.6	6.4	5.3	2.1	206.5	47.9	5.6	1.8
Condition																
Child-Visit	51.8	3.3	90.6	1.8	87.4	2.6	84.2	2.4	73.0	11.4	2.2	1.4	95.7	9.8	6.1	1.2
Preventive	29.1	8.4	97.2	2.0	94.7	3.2	90.3	5.2	67.0	11.2	0.0	0.0	190.7	97.0	2.9	2.2
Childbirth	32.6	16.4	93.1	6.8	93.1	6.8	93.1	6.8	62.1	14.1	0.0	0.0	123.6	31.5	0.0	0.0
Acute	55.4	3.0	90.0	1.0	87.6	1.5	80.8	1.4	66.8	4.9	1.6	0.5	91.8	14.5	4.4	0.6
Injury	67.6	9.3	92.3	5.1	81.9	6.9	75.1	5.3	87.9	25.5	5.7	3.8	97.3	23.5	0.3	0.3
Chronic	69.8	5.6	92.7	2.2	89.8	3.1	80.8	2.8	61.4	7.6	1.5	1.1	117.4	16.5	10.9	4.8

	Patients visiting a medical doctor, of those visiting any health care provider		Patients rating characteristics of health care provider as adequate/more than adequate						Mean time taken to reach health facility (in minutes)		Patients using private car or motorcycle to reach facility		Mean cost for an ambulatory care visit (local currency)		Percent of population perceiving discrimination	
	%	SE	%	SE	%	SE	%	SE	Minutes	SE	%	SE	mean cost	SE	%	SE
Other	59.7	4.3	90.2	2.4	89.2	1.9	83.8	2.4	73.8	9.8	2.5	1.3	105.4	21.8	5.4	1.2
Ownership																
Government	54.0	2.8	88.3	0.9	85.8	1.4	77.7	1.2	69.0	5.3	1.0	0.4	38.4	3.6	5.6	0.6
Private	59.1	5.3	96.2	1.3	92.9	1.0	91.7	0.9	67.3	6.8	4.0	1.3	202.8	26.0	3.9	1.2
NGO	66.5	16.4	82.7	12.3	82.7	12.3	78.6	12.8	64.1	17.0	2.8	2.8	154.8	48.1	4.1	4.0
Other	28.6	13.0	100.0	0.0	95.0	5.2	77.5	12.5	46.8	20.8	0.0	0.0	50.9	10.8	0.0	0.0
Self-Assessed Health																
Very-Good	58.5	2.6	93.2	0.8	90.2	1.4	84.5	1.4	63.8	5.1	2.4	0.8	107.8	18.3	4.4	1.2
Good	46.2	2.2	88.7	1.4	85.1	1.8	78.0	2.0	69.9	6.0	0.9	0.4	85.0	10.1	4.4	1.0
Moderate	54.4	4.7	87.4	2.9	85.2	2.4	80.9	2.8	82.0	10.6	2.1	1.5	94.6	11.4	8.1	2.5
Bad	70.8	5.5	83.9	4.1	86.1	5.6	74.4	7.9	66.9	16.0	0.9	0.7	131.3	48.4	6.3	2.0
Very-Bad	50.6	18.3	84.5	14.2	84.5	14.2	75.8	15.2	65.4	15.4	0.0	0.0	36.8	14.2	3.4	3.6
TOTAL	55.5	2.5	90.5	0.8	87.8	1.2	81.6	1.0	68.2	4.6	1.8	0.5	100.9	11.4	5.1	0.6

This table looks at various characteristics of a visit to an ambulatory care facility, for those who utilized such services in the previous 12 months (Q7204 and Q7205). Characteristics of a visit reported here include:

- (1) The percent of patients visiting a medical doctor (of those visiting any ambulatory provider) (Q7302).
- (2) Patients' rating of *skills*, *equipment*, and *drug supplies* of the provider as "adequate": percent of patients who reported "Yes" to questions Q7304, Q7305 and Q7306, respectively.
- (3) Barriers or facilitators to care access have been reported here for those who utilized ambulatory care services in the last 12 months. They include:
 - (a) *Mean time taken to reach facility*: patient reported times from Q7307 were used to calculate averages across sample sub-groups.
 - (b) *Patients using private motor vehicles*: percent of patients who reported using a "private car or motorcycle" to get to the facility in Q7308.
 - (c) *Mean cost of visit*: patient reported costs in Q7309-Q7313 were summed up for an individual and then averaged across sample sub-groups.
 - (d) *Perceived discrimination*: percent of patients who reported "Yes" to any form of discrimination listed in Q7328-Q7334.

Results are reported for the total WHS sample (category: "TOTAL"), and by the following sample sub-groups: sex, area of residence, age group, years of education, income quintiles, reason for seeking care (condition), ownership (of health facility), and self-assessed health. Mean values and standard errors (SE) are reported for each category.

Sub-groups common to other tables were constructed in the same manner. Common sub-groups include: sex (Q1001), area of residence (Q0104), age group (regrouping of reported age in Q1002), years of education (Q1010) and income quintiles. To determine income and subsequently income quintiles, an asset index was constructed for each household using responses to section 0700 on "Permanent Income Indicators" from the WHS household questionnaire.

Ownership, condition and self-assessed health sub-groups were constructed uniquely for the responsiveness section's tables. There are four categories of ownership: "Operated by the government" (Government), "Privately operated" (Private), "NGO" and "Other". To construct the ownership sub-group, information was combined from (a) Q7204, Q7205 and Q7301 for those utilizing ambulatory services, and (b) Q7200, Q7201 and Q7401 for those utilizing hospital inpatient services. The sub-group "Condition" used and regrouped information from Q7003 ("Which reason best describes why you [your child] last needed health care?") into 6 categories. The six categories include preventive care (immunization, antenatal consultation and family planning); childbirth; acute conditions (high fever, severe diarrhoea, or cough); injury; chronic conditions (arthritis, asthma and heart disease); and other (dental care, minor surgery and other). Self-assessed health was constructed using information from Q2000 ("In general, how would you rate your health today as?") in the WHS. Respondents could select one of the

following five categories: "Very good", "Good", "Moderate", "Bad" and "Very bad".

7.3.1 Patient assessment of responsiveness domains for ambulatory services: percent reporting "Moderate", "Bad" or "Very bad" - 1

	Prompt Attention				Dignity				Communication			
	Travel Time		Wait Time		Talked Respectfully		Privacy		Clear Explanation		Time for Questions	
	%	SE	%	SE	%	SE	%	SE	%	SE	%	SE
Sex												
Female	56.0	3.2	41.6	2.2	22.0	1.5	23.1	1.6	25.8	2.0	49.1	2.6
Male	56.1	3.1	43.5	2.6	25.8	2.3	22.6	2.0	32.0	2.2	50.6	2.3
Area of Residence												
Urban	39.2	3.6	33.7	4.8	18.9	3.3	12.6	2.4	18.6	2.5	34.9	4.6
Rural	57.5	3.0	43.3	1.9	24.2	1.5	23.8	1.7	29.6	1.6	51.1	1.7
Age Group												
18-29y	56.9	2.8	42.6	3.3	23.4	1.9	22.4	2.4	30.2	2.0	52.5	1.8
30-44y	54.5	5.0	43.4	2.4	22.5	2.1	21.1	2.0	28.4	1.7	45.3	2.6
45-59y	55.5	4.5	41.5	4.7	24.3	3.8	27.4	4.6	23.6	2.6	46.5	5.3
60-69y	53.5	8.1	40.0	6.2	27.0	5.2	20.2	5.4	29.4	5.6	48.4	7.9
70+y	59.8	5.4	42.9	5.9	29.2	5.3	26.4	5.1	30.4	5.0	57.2	5.2
Education Years												
0	58.8	6.5	46.3	2.4	24.6	4.0	29.6	3.4	18.8	2.6	50.0	4.4
1-5	59.1	3.0	43.4	2.4	25.9	2.9	22.6	1.7	31.0	2.1	50.8	3.2
6-11	57.8	2.9	41.7	3.4	23.2	1.9	22.5	2.1	32.0	1.9	54.3	2.0
12+	42.0	4.1	40.6	4.4	23.1	3.9	22.5	3.8	29.4	3.5	39.2	4.5
Income Quintiles												
Q1	63.8	3.7	42.7	3.0	20.7	2.4	16.9	2.4	26.1	2.6	48.5	3.0
Q2	58.6	5.3	50.5	3.5	29.9	3.2	25.0	3.6	33.1	2.2	57.2	4.1
Q3	61.2	3.8	42.2	2.5	24.7	1.8	27.7	2.6	31.7	2.0	54.0	4.6
Q4	55.7	4.0	40.9	4.3	23.8	2.3	21.1	2.2	29.4	3.2	50.8	3.2
Q5	45.6	3.5	35.9	3.8	21.5	3.7	24.1	4.2	27.2	3.1	43.0	3.5
Condition												
Child-Visit	52.4	4.5	42.0	3.3	21.3	2.0	21.5	2.5	27.5	2.7	51.9	2.8
Preventive	44.7	6.8	34.8	8.4	13.6	5.8	15.5	5.9	17.8	5.2	39.9	11.6
Childbirth	86.0	10.3	45.3	19.3	16.3	11.7	30.4	20.4	27.8	13.8	70.6	14.6
Acute	56.8	3.8	47.4	2.0	27.5	1.8	26.4	2.2	31.8	1.7	54.1	1.9
Injury	55.5	8.1	41.9	8.3	17.0	4.3	17.1	6.7	19.0	5.1	42.2	8.1
Chronic	46.7	4.2	33.6	4.6	23.0	4.0	16.6	4.1	23.4	4.1	38.3	5.8
Other	54.9	3.3	34.8	3.9	17.8	2.4	16.2	2.0	21.1	3.2	43.2	3.2
Ownership												
Government	57.9	4.0	50.0	2.0	29.6	1.8	27.9	2.0	33.2	1.8	53.9	2.1
Private	51.1	2.9	24.4	3.3	9.2	1.6	9.6	1.8	17.4	1.5	39.3	1.8
NGO	69.5	13.6	32.0	15.4	23.9	13.7	12.7	9.1	29.7	14.6	66.5	14.2
Other	41.7	22.6	0.0	0.0	0.0	0.0	22.0	11.9	26.9	12.0	35.2	12.8
Self-Assessed Health												
Very-Good	53.8	3.9	42.1	2.1	21.5	1.5	22.7	1.6	30.8	1.5	50.2	1.9
Good	60.6	3.2	47.9	2.2	31.5	1.9	26.2	2.2	29.0	3.5	52.3	3.2
Moderate	55.2	4.7	36.1	3.9	21.8	3.5	21.0	3.2	27.5	3.2	49.9	4.6
Bad	58.6	5.0	37.4	8.3	14.2	5.1	15.5	6.4	15.3	4.9	39.0	4.9
Very-Bad	43.8	18.5	43.8	18.5	29.0	17.4	13.5	12.7	13.5	12.7	29.0	17.4
TOTAL	56.0	2.8	42.5	1.8	23.8	1.4	22.9	1.6	28.7	1.5	49.8	1.6

The following table reports the percent of people perceiving poor responsiveness in ambulatory care facilities, where "poor" is defined as a rating of "Moderate", "Bad" or "Very bad" in Q7315-Q7327 which have 5 response options (including "Good" and "Very good"). Ratings for each of the seven domains of ambulatory care responsiveness (including 13 questions) by patients have been presented here. There are two questions each for six of the seven domains; the domain choice has only one question. The following questions from the survey have been used to determine patient assessment of each responsiveness domain:

- (1) *Prompt attention*: travel time (Q7315) and wait time (Q7316).
- (2) *Dignity*: talked respectfully (Q7317) and privacy (Q7318).
- (3) *Communication*: clear explanation (Q7319) and time for questions (Q7320).
- (4) *Autonomy*: treatment information (Q7321) and involvement (Q7322).
- (5) *Confidentiality*: talk privately (Q7323) and confidentiality of records (Q7324).
- (6) *Choice of health care provider*: Q7325.
- (7) *Basic amenities*: cleanliness (Q7326) and space (Q7327).

Results are reported for the total WHS sample (category: "TOTAL"), and by the following sample sub-groups: sex, area of residence, age group, years of education, income quintiles, reason for visit, ownership (of health facility), and self-assessed health. Mean values and standard errors (SE) are reported for each category.

Sub-groups common to other tables were constructed in the same manner. Common sub-groups include sex (Q1001), area of residence (Q0104), age group (regrouping of reported age in Q1002), years of education (Q1010) and income quintiles. To determine income and subsequently income quintiles, an asset index was constructed for each household using responses to section 0700 on "Permanent Income Indicators" from the WHS household questionnaire.

Ownership, condition and self-assessed health sub-groups were constructed uniquely for the responsiveness section's tables. There are four categories of ownership: "Operated by the government" (Government), "Privately operated" (Private), "NGO" and "Other". To construct the ownership sub-group, information was combined from (a) Q7204, Q7205 and Q7301 for those utilizing ambulatory services, and (b) Q7200, Q7201 and Q7401 for those utilizing hospital inpatient services. The sub-group "Condition" used and regrouped information from Q7003 ("Which reason best describes why you [your child] last needed health care?") into 6 categories. The six categories include preventive care (immunization, antenatal consultation and family planning); childbirth; acute conditions (high fever, severe diarrhoea, or cough); injury; chronic conditions (arthritis, asthma and heart disease); and other (dental care, minor surgery and other). Self-assessed health was constructed using information from Q2000 ("In general, how would you rate your health today as?") in the WHS. Respondents were asked to select one of the following five categories: "Very good", "Good", "Moderate", "Bad" and "Very bad".

7.3.2 Patient assessment of responsiveness domains for ambulatory services: percent reporting "Moderate", "Bad" or "Very bad" - 2

	Autonomy				Confidentiality				Choice of Healthcare Provider		Basic Amenities			
	Treatment Information		Involvement		Talk Privately		Confidentiality of Records		%	SE	Cleanliness		Space	
	%	SE	%	SE	%	SE	%	SE			%	SE	%	SE
Sex														
Female	49.5	2.7	57.2	2.9	32.5	2.5	24.3	3.0	54.3	3.2	21.6	1.8	30.6	1.6
Male	51.0	2.7	60.8	2.3	35.6	2.1	26.6	1.8	55.2	1.9	24.0	2.0	31.9	2.5
Area of Residence														
Urban	32.3	4.7	44.3	3.1	22.4	3.0	16.8	3.3	44.9	3.9	14.6	3.0	25.1	3.2
Rural	51.7	2.2	60.1	1.9	34.9	1.6	26.1	2.1	55.5	1.9	23.4	1.0	31.7	1.6
Age Group														
18-29y	52.5	2.1	59.7	2.1	36.2	2.0	27.1	2.7	55.5	2.2	22.5	1.4	31.5	1.9
30-44y	44.2	3.2	58.2	2.6	27.6	1.9	20.3	1.4	51.4	2.7	23.1	2.0	30.0	2.0
45-59y	50.0	4.9	57.5	4.4	36.3	4.7	30.0	4.9	58.1	4.2	21.7	2.4	31.5	4.9
60-69y	51.2	6.1	55.8	8.3	33.7	7.9	23.3	5.5	57.0	7.5	22.3	6.1	34.4	6.6
70+y	55.9	4.9	61.5	5.3	37.1	6.8	20.4	5.0	49.4	4.1	26.7	4.0	28.7	4.0
Education Years														
0	50.3	5.1	57.9	3.4	37.9	3.7	32.6	5.2	54.4	3.9	21.0	3.2	33.1	4.1
1-5	51.7	2.7	57.8	3.5	38.2	2.8	26.2	2.6	58.1	2.7	25.9	2.4	32.4	3.0
6-11	52.7	2.6	62.4	2.1	33.8	2.0	24.6	2.3	55.6	2.9	22.1	2.1	31.8	2.0
12+	44.8	4.4	55.2	4.5	29.7	3.3	25.2	4.6	51.0	4.9	30.2	4.4	32.2	3.7
Income Quintiles														
Q1	49.7	2.8	59.9	2.6	29.7	3.4	21.0	3.7	54.7	2.8	16.7	1.9	26.5	3.0
Q2	57.4	3.8	67.5	4.5	41.2	3.4	32.8	3.8	61.4	4.4	20.8	2.1	35.1	3.9
Q3	53.6	4.4	64.9	3.6	41.3	3.6	26.7	3.9	62.5	3.4	24.7	3.6	33.2	3.2
Q4	50.4	3.5	53.9	5.6	31.4	3.7	24.5	2.9	51.3	3.8	27.0	2.7	33.2	4.1
Q5	47.5	3.3	52.5	3.4	28.3	2.1	24.1	4.2	50.6	4.0	28.0	3.9	31.4	3.6
Condition														
Child-Visit	52.2	3.1	60.9	3.1	30.9	2.6	22.2	2.2	60.6	3.7	22.7	2.8	34.6	2.8
Preventive	32.2	9.3	41.5	10.0	10.2	4.8	4.9	2.7	43.4	8.6	15.1	5.7	25.0	6.1
Childbirth	70.6	14.6	64.8	21.8	70.6	14.6	58.0	21.4	82.5	12.8	57.3	24.2	73.2	16.0
Acute	54.9	1.9	63.0	2.0	38.3	2.1	30.2	2.9	58.4	2.3	23.8	1.9	33.6	2.1
Injury	37.6	8.2	59.1	8.5	45.0	8.3	30.2	8.4	49.8	8.6	12.4	3.9	24.5	9.3
Chronic	42.3	5.0	49.6	6.5	26.1	4.8	13.2	3.2	43.8	6.0	16.9	3.4	20.1	4.8
Other	43.8	3.9	50.6	3.3	25.7	3.0	17.9	3.0	45.3	3.4	22.2	2.2	26.7	2.7
Ownership														
Government	53.4	1.9	62.0	2.1	38.3	2.3	29.3	2.6	59.1	2.3	26.5	1.3	37.7	1.7
Private	40.6	4.4	51.1	2.2	22.3	1.5	14.9	2.2	43.9	2.9	12.6	2.0	14.9	2.2
NGO	69.1	13.0	44.3	16.6	47.6	16.1	26.9	15.0	53.1	17.3	22.4	12.4	6.7	5.0
Other	58.3	14.0	75.9	15.8	24.3	12.2	5.4	5.2	14.6	9.0	6.0	6.2	12.9	12.8
Self-Assessed Health														
Very-Good	50.9	1.8	58.5	1.9	34.5	1.7	25.6	2.0	55.8	2.3	24.5	1.7	31.3	1.7
Good	53.5	3.4	65.0	2.6	37.2	3.3	27.9	3.6	57.8	2.4	22.7	2.4	34.1	3.0
Moderate	49.9	4.0	57.8	3.0	34.0	3.9	25.4	2.6	53.0	4.4	16.2	2.5	26.7	3.4
Bad	34.0	8.8	43.5	3.3	18.8	5.4	14.0	3.8	38.8	3.2	24.6	7.0	30.4	7.4
Very-Bad	29.0	17.4	29.7	17.4	13.5	12.7	18.2	13.2	33.7	17.7	17.8	13.7	17.8	13.7
TOTAL	50.2	2.1	58.9	1.8	34.0	1.6	25.3	1.9	54.7	1.8	22.7	1.0	31.2	1.5

The following table reports the percent of people perceiving poor responsiveness in ambulatory care facilities, where "poor" is defined as a rating of "Moderate", "Bad" or "Very bad" in Q7315-Q7327 which have 5 response options (including "Good" and "Very good"). Ratings for each of the seven domains of ambulatory care responsiveness (including 13 questions) by patients have been presented here. There are two questions each for six of the seven domains; the domain choice has only one question. The following questions from the survey have been used to determine patient assessment of each responsiveness domain:

- (1) *Prompt attention*: travel time (Q7315) and wait time (Q7316).
- (2) *Dignity*: talked respectfully (Q7317) and privacy (Q7318).
- (3) *Communication*: clear explanation (Q7319) and time for questions (Q7320).
- (4) *Autonomy*: treatment information (Q7321) and involvement (Q7322).
- (5) *Confidentiality*: talk privately (Q7323) and confidentiality of records (Q7324).
- (6) *Choice of health care provider*: Q7325.
- (7) *Basic amenities*: cleanliness (Q7326) and space (Q7327).

Results are reported for the total WHS sample (category: "TOTAL"), and by the following sample sub-groups: sex, area of residence, age group, years of education, income quintiles, reason for visit, ownership (of health facility), and self-assessed health. Mean values and standard errors (SE) are reported for each category.

Sub-groups common to other tables were constructed in the same manner. Common sub-groups include sex (Q1001), area of residence (Q0104), age group (regrouping of reported age in Q1002), years of education (Q1010) and income quintiles. To determine income and subsequently income quintiles, an asset index was constructed for each household using responses to section 0700 on "Permanent Income Indicators" from the WHS household questionnaire.

Ownership, condition and self-assessed health sub-groups were constructed uniquely for the responsiveness section's tables. There are four categories of ownership: "Operated by the government" (Government), "Privately operated" (Private), "NGO" and "Other". To construct the ownership sub-group, information was combined from (a) Q7204, Q7205 and Q7301 for those utilizing ambulatory services, and (b) Q7200, Q7201 and Q7401 for those utilizing hospital inpatient services. The sub-group "Condition" used and regrouped information from Q7003 ("Which reason best describes why you [your child] last needed health care?") into 6 categories. The six categories include preventive care (immunization, antenatal consultation and family planning); childbirth; acute conditions (high fever, severe diarrhoea, or cough); injury; chronic conditions (arthritis, asthma and heart disease); and other (dental care, minor surgery and other). Self-assessed health was constructed using information from Q2000 ("In general, how would you rate your health today as?") in the WHS. Respondents were asked to select one of the following five categories: "Very good", "Good", "Moderate", "Bad" and "Very bad".

7.4 Patient assessed characteristics of hospital inpatient health services

	Patients staying for more than 6 days on last hospital visit		Patients rating characteristics of health care provider as adequate / more than adequate				Mean time taken to reach health facility (in minutes)		Patients using private car or motorcycle to reach facility		Patients waiting more than a month to be admitted		Mean number of patients sleeping in the same room		Mean cost for a hospital visit		Percent of population perceiving discrimination			
	%	SE	%	SE	%	SE	%	SE	Minutes	SE	%	SE	%	SE	No	SE	mean cost	SE	%	SE
Sex																				
Female	36.2	2.7	93.9	1.1	92.9	1.0	90.3	1.7	70.5	5.2	9.4	1.5	0.4	0.3	12.7	1.1	489.3	114.6	4.7	1.0
Male	49.8	2.6	93.0	2.2	92.1	2.1	91.0	2.1	77.0	7.3	10.3	2.4	0.6	0.6	13.6	1.2	742.5	157.7	7.6	1.6
Area of Residence																				
Urban	27.5	3.6	91.5	2.6	93.0	2.4	88.2	3.3	37.6	3.8	29.0	5.6	0.0	0.0	13.5	1.3	1,509.5	863.7	12.8	3.4
Rural	41.8	2.2	93.8	1.2	92.6	1.2	90.8	1.5	76.3	5.2	7.6	1.5	0.5	0.3	12.9	0.9	452.8	59.7	4.9	0.8
Age Group																				
18-29y	34.9	1.9	92.7	1.4	92.1	1.4	89.2	1.8	68.1	5.5	8.3	1.3	0.1	0.1	12.0	1.1	418.0	75.1	6.2	1.2
30-44y	41.8	3.1	94.1	1.7	93.0	1.2	91.1	1.6	74.0	6.2	10.2	2.8	0.6	0.6	13.9	1.2	789.9	278.5	6.0	1.3
45-59y	56.7	6.9	94.1	2.1	94.4	2.2	93.4	2.2	98.6	17.2	8.3	3.8	0.0	0.0	13.0	1.9	782.8	317.3	3.2	1.8
60-69y	57.4	12.0	98.2	1.8	89.6	6.9	91.1	6.5	55.7	10.7	26.0	11.6	5.0	4.9	18.2	4.5	307.9	78.8	5.2	4.8
70+y	43.7	15.2	98.0	1.0	98.0	1.0	98.0	1.0	50.6	6.2	18.6	17.2	0.0	0.0	15.4	5.7	149.4	76.4	2.0	1.5
Education Years																				
0	49.3	4.6	94.9	1.5	94.4	1.8	92.9	1.7	69.6	8.0	4.7	1.9	1.0	1.0	14.4	1.5	241.2	41.9	6.2	2.8
1-5	45.2	5.8	93.7	2.1	92.8	1.9	91.6	2.0	83.8	9.6	8.5	2.0	0.5	0.5	12.6	1.2	291.6	32.8	3.3	1.0
6-11	31.9	2.7	93.9	1.2	92.8	1.4	89.6	2.2	63.4	4.9	11.4	1.8	0.2	0.2	11.7	1.1	602.9	131.4	7.5	1.4
12+	30.5	5.7	92.7	2.9	90.4	3.4	86.2	3.5	43.4	3.9	22.2	4.6	0.0	0.0	14.8	2.4	2,034.3	850.5	7.1	2.6
Income Quintiles																				
Q1	48.3	3.6	95.2	1.6	93.1	1.8	89.6	2.1	87.4	12.9	6.2	2.9	0.9	0.8	13.1	1.7	238.4	23.4	8.3	2.7
Q2	37.5	3.3	94.7	1.6	93.5	1.6	91.2	1.8	91.2	11.3	5.9	2.1	0.0	0.0	11.8	1.4	484.2	123.7	4.3	1.6
Q3	41.2	4.2	92.2	2.1	94.3	1.6	94.2	1.5	73.2	9.1	4.8	1.2	1.0	0.9	12.9	1.6	337.0	61.9	3.4	1.4
Q4	41.2	3.7	92.8	3.0	90.7	2.2	89.2	2.4	56.0	6.2	11.9	2.9	0.0	0.0	13.6	1.5	387.2	85.6	5.8	1.6
Q5	30.9	4.2	93.5	2.7	92.1	3.1	88.8	3.2	54.5	7.0	22.0	4.3	0.4	0.4	13.8	1.5	1,403.7	407.7	5.6	1.5
Condition																				
Child-Visit	50.7	3.0	93.8	1.4	94.4	1.6	94.3	1.7	95.1	9.0	4.1	1.3	0.0	0.0	15.8	1.6	575.8	159.4	6.7	1.4
Fever	42.0	3.2	95.4	1.5	94.4	1.1	92.7	1.0	76.0	6.3	6.5	1.6	0.6	0.5	14.9	1.2	496.5	96.1	7.4	1.3
Childbirth	20.7	3.3	94.6	1.3	93.5	1.1	90.1	1.5	59.8	6.4	9.6	1.7	0.2	0.2	10.5	1.4	615.2	213.0	4.4	0.9
Arthritis	53.1	12.7	86.0	7.2	80.2	6.1	80.2	6.1	86.3	13.1	24.4	14.9	0.0	0.0	10.8	2.0	334.5	65.1	0.8	0.8
Asthma	14.1	11.3	96.3	4.0	96.3	4.0	100.0	0.0	22.9	16.0	7.7	6.3	0.0	0.0	13.4	1.7	444.5	88.3	2.4	2.6
Heart-Disease	18.9	14.1	100.0	0.0	100.0	0.0	100.0	0.0	28.6	15.6	8.1	8.3	0.0	0.0	9.1	3.8	1,685.8	1,483.6	19.5	17.9
Injury	65.2	9.1	92.7	2.5	96.4	2.0	91.7	4.4	85.6	15.5	24.7	8.9	0.0	0.0	16.8	2.5	348.4	90.4	4.6	2.2
Minor-Surgery	84.9	4.6	85.5	11.4	88.9	10.8	85.5	11.4	59.4	7.7	10.5	6.5	0.0	0.0	16.6	4.7	1,013.2	772.2	12.1	9.2
Other	58.1	4.0	90.7	2.5	89.1	3.0	88.1	3.1	87.6	12.1	10.4	2.6	0.7	0.7	12.8	1.4	616.4	154.7	4.3	1.5
Ownership																				
Government	40.8	2.2	92.9	1.1	91.3	1.1	89.1	1.6	72.8	6.1	9.7	0.9	0.4	0.3	14.0	1.2	302.9	60.6	6.5	0.9
Private	39.6	4.9	94.9	1.9	95.4	2.0	93.2	2.1	73.5	5.2	10.1	3.6	0.6	0.5	10.5	1.7	928.7	207.1	4.2	1.3
NGO	8.6	9.8	92.4	9.2	92.4	9.2	100.0	0.0	21.3	16.6	3.9	4.1	0.0	0.0	14.4	1.1	577.3	126.7	0.0	0.0
Other	88.3	11.0	100.0	0.0	100.0	0.0	100.0	0.0	123.1	64.7	0.0	0.0	0.0	0.0	15.0	7.3	263.9	75.3	0.0	0.0
Self-Assessed Health																				
Very-Good	38.0	2.2	94.0	1.3	92.8	1.6	91.4	1.8	70.4	5.7	8.7	1.0	0.5	0.4	13.1	1.2	733.0	162.5	5.3	0.8
Good	34.6	3.8	91.9	2.5	93.3	2.4	89.0	3.4	77.6	8.1	8.6	3.3	0.0	0.0	12.4	1.5	389.3	124.2	4.7	1.3
Moderate	50.0	4.7	94.8	2.0	92.3	2.5	92.0	2.2	66.8	12.6	12.9	3.6	0.9	0.8	13.0	2.2	418.9	57.9	6.9	2.3
Bad	60.6	12.3	90.3	5.7	87.0	6.6	80.8	7.5	102.1	22.0	15.7	8.8	0.0	0.0	15.0	3.0	226.2	54.3	7.4	3.9
Very-Bad	92.5	5.9	100.0	0.0	100.0	0.0	86.3	12.9	64.1	21.4	0.0	0.0	0.0	0.0	9.2	2.6	77.1	38.5	8.3	8.3
TOTAL	40.5	2.1	93.6	1.2	92.7	1.1	90.5	1.4	72.6	4.7	9.7	1.4	0.4	0.2	13.0	0.9	565.3	94.4	5.6	0.8

This table looks at various characteristics of a visit to a hospital inpatient care facility, for those who utilized such services in the past 3 years (Q7200, Q7201 and Q7402). Characteristics of a visit reported here include:

(1) The percent of patients who stayed 6 days or more at an inpatient facility during their last visit (Q7404).

(2) Patients' rating of *skills, equipment, and drug supplies* of the provider as "adequate": percent of patients who reported "Yes" to questions Q7405, Q7406 and Q7407, respectively.

(3) Barriers or facilitators to care access have been reported here for those who utilized inpatient care services in the last 3 years. They include:

(a) *Mean time taken to reach facility*: patient reported times from Q7408 were used to calculate averages across sample sub-groups.

(b) *Patients using private motor vehicles*: percent of patients who reported using a "private car or motorcycle" to get to the facility in Q7409.

(c) *Patients waiting more than a month to be admitted*: percent of patients who reported waiting more than a month to be admitted in Q7410.

(d) *Mean number of patients sleeping in same room*: averages across sample sub-groups have been constructed for numbers reported in Q7417.

(e) *Mean cost of visit*: patient reported costs in Q7411-Q7415 were summed up for an individual and then averaged across sample sub-groups.

(f) *Perceived discrimination*: percent of patients who reported "Yes" to any form of discrimination asked in Q7433-Q7439.

Results are reported for the total WHS sample (category: "TOTAL"), and by the following sample sub-groups: sex, area of residence, age group, years of education, income quintiles, reason for seeking care (condition), ownership (of health facility), and self-assessed health. Mean values and standard errors (SE) are reported for each category.

Sub-groups common to other tables were constructed in the same manner. Common sub-groups include sex (Q1001), area of residence (Q0104), age group (regrouping of reported age in Q1002), years of education (Q1010) and income quintiles. To determine income and subsequently income quintiles, an asset index was constructed for each household using responses to section 0700 on "Permanent Income Indicators" from the WHS household questionnaire.

Ownership, condition and self-assessed health sub-groups were constructed uniquely for the responsiveness section's tables. There are four categories of ownership: "Operated by the government" (Government), "Privately operated" (Private), "NGO" and "Other". To construct the ownership sub-group, information was combined from (a) Q7204, Q7205 and Q7301 for those utilizing ambulatory services, and (b) Q7200, Q7201 and Q7401 for those utilizing hospital inpatient services. The sub-group "Condition" used information from Q7403 ("Which of the following best describes the reason for your [child's] last overnight stay?"). The eight categories of Q7403 include high fever, diarrhoea, or cough; childbirth; arthritis; asthma; heart disease; bodily injury; minor surgery; and other. Self-assessed health was constructed using information from Q2000 ("In general, how would you rate your health today as?") in the WHS. Respondents were asked to select one of the following five categories: "Very good", "Good", "Moderate", "Bad" and "Very bad".

7.5.1 Patient assessment of responsiveness domains for hospital inpatient services: percent reporting "Moderate", "Bad" or "Very bad" - 1

	Prompt Attention				Dignity				Communication				Autonomy			
	Travel Time		Wait Time		Talked Respectfully		Privacy		Clear Explanation		Time for Questions		Treatment Information		Involvement	
	%	SE	%	SE	%	SE	%	SE	%	SE	%	SE	%	SE	%	SE
Sex																
Female	52.5	1.8	26.0	2.6	20.4	1.9	18.2	1.8	25.3	1.9	49.4	3.6	51.2	4.7	59.1	2.4
Male	58.3	3.5	34.4	4.0	26.6	3.4	23.0	3.6	31.5	3.9	53.3	3.4	55.8	3.4	64.5	3.0
Area of Residence																
Urban	43.4	6.2	23.3	4.5	20.2	3.5	20.1	4.3	25.4	4.0	39.0	3.2	39.7	5.2	54.4	6.3
Rural	55.5	1.8	29.2	2.4	22.6	1.7	19.7	2.0	27.4	1.8	51.9	2.8	54.0	3.9	61.5	2.3
Age Group																
18-29y	52.5	3.4	29.1	2.9	23.5	2.6	21.6	2.8	28.2	2.5	50.7	3.5	53.1	4.4	59.0	3.0
30-44y	58.6	3.6	28.3	4.0	18.0	2.4	15.2	2.3	25.2	2.1	48.5	4.1	51.1	5.1	62.8	3.6
45-59y	54.9	5.0	36.2	6.7	30.2	6.6	24.0	6.6	32.3	5.7	55.8	5.6	54.9	6.6	60.4	5.7
60-69y	55.5	10.1	13.5	6.4	26.3	9.9	24.7	10.2	21.9	9.2	59.5	12.0	62.0	12.0	73.8	9.8
70+y	35.7	10.6	6.3	3.0	8.5	4.8	7.3	4.3	14.6	5.7	36.4	10.9	37.0	18.1	59.6	21.7
Education Years																
0	55.5	2.8	25.5	4.6	15.6	2.3	21.3	4.2	22.5	5.2	49.9	3.6	52.1	4.8	57.4	3.8
1-5	60.8	3.5	29.7	2.9	26.4	3.3	21.3	3.2	29.1	2.9	51.4	5.5	52.5	6.3	59.2	3.7
6-11	47.7	2.6	28.1	3.1	24.4	2.7	20.5	3.2	32.7	3.6	56.9	3.2	58.0	3.4	66.3	2.8
12+	49.9	5.2	36.0	5.4	17.5	4.4	13.5	4.2	22.1	4.5	38.3	5.3	43.6	6.0	52.5	7.0
Income Quintiles																
Q1	57.9	4.6	25.4	4.9	18.8	2.2	23.2	3.2	26.5	3.0	56.1	3.9	61.9	3.8	63.6	3.9
Q2	58.0	3.5	25.3	4.3	24.2	4.2	18.8	4.2	29.4	3.5	52.9	5.7	54.5	8.8	70.1	4.3
Q3	57.7	4.4	33.3	3.0	25.0	2.8	22.3	2.9	28.3	3.3	49.9	3.7	48.5	3.6	59.3	3.5
Q4	46.2	4.2	30.3	3.1	25.8	3.6	23.0	4.9	31.7	5.0	53.3	4.0	55.9	3.8	59.7	3.9
Q5	50.7	5.0	29.4	3.2	20.7	2.9	14.1	2.7	22.9	3.3	44.7	4.2	45.4	4.5	57.2	4.6
Condition																
Child-Visit	64.8	3.0	31.4	3.3	19.9	3.2	21.0	3.1	26.6	2.7	50.4	2.3	60.3	3.9	61.3	3.3
Fever	60.0	3.1	31.9	2.5	21.5	2.1	20.1	2.1	29.6	2.5	54.7	3.0	57.0	2.9	61.6	3.6
Childbirth	45.4	3.3	24.2	2.9	21.9	2.1	19.1	2.7	26.8	2.7	52.5	3.1	51.6	3.1	59.0	3.5
Arthritis	58.2	12.4	52.4	14.1	47.2	12.4	34.4	10.2	51.9	14.5	74.8	10.0	65.2	13.2	67.8	12.5
Asthma	79.8	14.4	9.9	8.5	22.9	16.4	15.4	11.9	17.5	13.1	25.6	17.8	29.0	19.9	93.0	5.9
Heart-Disease	16.9	13.5	9.0	9.4	0.0	0.0	0.0	0.0	13.4	10.9	13.4	10.9	21.5	14.3	23.5	14.4
Injury	58.9	11.6	14.1	4.6	10.4	4.4	10.5	4.0	14.4	5.6	41.4	9.8	55.5	11.7	61.4	7.9
Minor-Surgery	60.0	8.5	32.7	8.5	25.0	7.9	11.1	4.5	12.1	7.6	36.6	8.6	43.5	9.0	78.2	11.6
Other	55.7	5.7	32.6	4.7	25.2	5.1	22.6	5.1	27.8	4.2	45.6	4.2	49.0	6.4	58.1	5.2
Ownership																
Government	51.4	2.5	30.9	2.0	27.8	2.6	24.6	2.8	33.4	2.4	53.7	2.5	53.6	2.4	61.2	2.4
Private	59.6	3.9	25.1	5.1	12.2	2.2	10.7	2.6	16.0	2.4	46.7	5.8	53.4	6.7	60.4	5.4
NGO	89.1	9.9	4.8	5.4	1.0	1.3	1.0	1.3	2.2	2.4	9.5	8.8	11.8	10.4	86.9	12.8
Other	58.6	18.4	20.9	25.2	0.0	0.0	0.0	0.0	0.0	0.0	20.9	25.2	24.2	26.1	24.2	26.1
Self-Assessed Health																
Very-Good	49.5	1.9	27.6	1.6	22.2	1.9	19.9	2.3	28.1	2.3	49.4	2.9	50.2	2.9	58.5	3.8
Good	58.5	4.3	34.5	6.8	26.4	3.8	18.1	3.0	28.0	3.2	55.0	2.8	57.3	5.5	65.5	4.4
Moderate	63.0	3.1	23.3	3.3	17.0	4.1	20.0	5.0	22.6	4.5	46.5	5.6	51.8	7.4	60.8	5.2
Bad	47.2	9.1	33.1	9.0	26.7	9.1	26.5	8.8	34.3	9.4	61.4	8.0	62.3	7.9	61.3	8.0
Very-Bad	54.8	20.6	0.0	0.0	8.7	8.6	8.7	8.6	29.7	15.8	29.7	15.8	29.7	15.8	54.9	20.0
TOTAL	54.3	1.7	28.6	2.2	22.4	1.5	19.7	1.9	27.2	1.6	50.6	2.6	52.6	3.6	60.8	2.2

The following table reports the percent of people perceiving poor responsiveness in hospital inpatient care facilities, where "poor" is defined as a rating of "Moderate", "Bad" or "Very bad" in questions Q7418-Q7432 which have 5 response options (including "good" and "very good".. Ratings for each of the eight domains of hospital inpatient care responsiveness (including 15 questions) by patients have been presented here. There are two questions each for seven of the eight domains; the domain of choice has only one question. The following questions from the survey have been used to determine patient assessment of each responsiveness domain:

- (1) *Prompt attention*: travel time (Q7418) and wait time (Q7419).
- (2) *Dignity*: talked respectfully (Q7420) and privacy (Q7421).
- (3) *Communication*: clear explanation (Q7422) and time for questions (Q7423).
- (4) *Autonomy*: treatment information (Q7424) and involvement (Q7425).
- (5) *Confidentiality*: talk privately (Q7426) and confidentiality of records (Q7427).
- (6) *Choice of health care provider*: Q7428.
- (7) *Basic amenities*: cleanliness (Q7429) and space (Q7430).
- (8) *Social support*: family visit (Q7431) and external contact (Q7432).

Results are reported for the total WHS sample (category: "TOTAL"), and by the following sample sub-groups: sex, area of residence, age group, years of education, income quintiles, reason for visit, ownership (of health facility), and self-assessed health. Mean values and standard errors (SE) are reported for each category.

Sub-groups common to other tables were constructed in the same manner. Common sub-groups include sex (Q1001), area of residence (Q0104), age group (regrouping of reported age in Q1002), years of education (Q1010) and income quintiles. To determine income and subsequently income quintiles, an asset index was constructed for each household using responses to section 0700 on "Permanent Income Indicators" from the WHS household questionnaire.

Ownership, condition and self-assessed health sub-groups were constructed uniquely for the responsiveness section's tables. There are four categories of ownership: "Operated by the government" (Government), "Privately operated" (Private), "NGO" and "Other". To construct the ownership sub-group, information was combined from (a) Q7204, Q7205 and Q7301 for those utilizing ambulatory services, and (b) Q7200, Q7201 and Q7401 for those utilizing hospital inpatient services. The sub-group "Condition" used information from Q7403 ("Which of the following best describes the reason for your [child's] last overnight stay?"). The eight categories of Q7403 include high fever, diarrhoea, or cough; childbirth; arthritis; asthma; heart disease; bodily injury; minor surgery; and other. Self-assessed health was constructed using information from Q2000 ("In general, how would you rate your health today as?") in the WHS. Respondents were asked to select one of the following five categories: "Very good", "Good", "Moderate", "Bad" and "Very bad".

7.5.2 Patient assessment of responsiveness domains for hospital inpatient services: percent reporting "Moderate", "Bad" or "Very bad" - 2

	Confidentiality				Choice of health care provider		Basic Amenities				Social Support			
	Talk Privately	SE	Confidentiality of records		SE	Cleanliness	Space		SE	Family Visit		External Contact		
	%		%	%			%	%		%	SE	SE		
Sex														
Female	29.3	2.1	22.9	2.6	52.3	3.2	25.2	2.2	28.6	2.2	15.3	2.0	19.3	2.0
Male	30.9	3.6	27.3	4.2	54.2	3.6	28.7	3.5	28.6	2.5	17.0	2.6	25.8	2.2
Area of Residence														
Urban	25.1	3.4	11.8	2.0	42.9	8.4	26.9	4.2	31.0	5.5	11.7	3.8	14.3	2.8
Rural	30.3	2.1	25.6	2.8	54.0	2.9	26.3	1.7	28.4	1.9	16.3	2.0	22.1	1.9
Age Group														
18-29y	30.1	2.4	24.3	3.1	54.0	4.2	28.3	3.0	28.0	2.7	16.2	2.4	22.0	2.9
30-44y	27.4	2.5	22.1	1.9	51.3	3.9	24.2	3.0	29.2	3.2	13.9	1.5	21.0	2.4
45-59y	31.5	7.0	26.8	7.5	57.0	6.7	29.2	6.2	27.9	5.2	15.8	4.4	18.7	5.0
60-69y	40.2	12.0	37.6	11.7	44.8	13.8	19.4	9.8	39.7	12.5	34.1	12.0	27.4	11.9
70+y	29.9	18.2	20.4	18.3	40.5	19.4	5.2	2.8	21.4	5.4	7.1	3.2	16.1	8.2
Education Years														
0	34.8	4.9	30.1	6.3	48.7	6.9	21.4	4.0	28.2	4.5	8.6	2.0	21.2	3.2
1-5	30.8	2.9	27.4	3.2	56.5	3.6	23.0	2.7	24.4	2.4	15.2	2.6	20.8	3.5
6-11	31.7	2.9	22.6	3.7	56.4	3.4	34.1	3.7	35.2	2.7	21.4	2.9	24.8	2.9
12+	23.7	4.7	18.3	4.9	44.9	5.9	30.1	5.1	31.9	5.6	21.3	4.8	25.1	5.2
Income Quintiles														
Q1	35.9	2.8	31.1	3.8	61.5	4.6	25.5	3.1	27.1	4.0	13.5	2.3	22.5	3.3
Q2	30.3	4.5	25.4	4.3	57.5	5.6	21.9	3.0	26.2	3.9	14.0	3.6	17.9	4.2
Q3	29.1	4.4	24.0	3.7	49.4	3.8	22.7	2.8	29.5	3.4	16.2	3.4	24.7	3.5
Q4	28.6	3.0	23.1	4.8	48.5	3.8	32.3	4.5	31.8	3.4	22.8	3.4	25.4	3.4
Q5	26.2	3.5	18.5	2.7	49.2	5.5	29.6	4.1	31.4	4.4	15.5	2.8	15.3	2.7
Condition														
Child-Visit	31.0	3.4	22.5	3.5	56.2	6.0	24.1	3.3	31.9	3.3	15.4	2.3	22.2	2.5
Fever	34.2	2.9	25.7	2.8	53.0	4.2	25.5	3.2	32.5	3.3	14.4	2.1	21.9	3.2
Childbirth	28.9	2.1	25.0	3.2	52.6	4.5	29.1	2.9	26.0	2.6	18.5	3.9	22.2	3.2
Arthritis	46.6	13.7	40.6	16.0	48.6	12.1	42.4	15.8	30.5	12.0	21.8	9.2	35.2	11.2
Asthma	23.2	16.7	6.6	5.6	89.1	9.0	11.2	9.1	23.4	16.7	7.1	5.6	7.1	5.6
Heart-Disease	0.0	0.0	0.0	0.0	36.1	19.7	26.0	16.9	0.0	0.0	6.5	5.6	14.5	10.7
Injury	23.1	10.1	21.4	10.1	63.3	11.4	25.0	6.1	28.3	5.8	18.1	5.1	17.3	3.9
Minor-Surgery	12.5	7.5	0.5	0.5	63.5	8.2	8.2	5.5	8.1	4.6	6.2	5.0	6.2	5.0
Other	27.3	4.2	24.6	4.8	48.1	3.9	25.3	4.2	29.3	3.6	15.0	3.1	21.9	3.2
Ownership														
Government	34.0	2.5	28.7	3.0	53.0	2.4	31.9	2.4	33.6	2.8	19.8	2.8	22.7	2.4
Private	21.9	2.5	15.1	2.5	52.4	8.1	16.3	2.7	18.5	3.2	8.6	1.4	19.9	3.0
NGO	0.0	0.0	0.0	0.0	83.9	14.8	1.2	1.5	0.0	0.0	1.2	1.5	7.2	7.1
Other	24.2	26.1	24.2	26.1	20.9	25.2	0.0	0.0	20.9	25.2	0.0	0.0	0.0	0.0
Self-Assessed Health														
Very-Good	30.0	2.9	24.2	3.2	51.8	3.3	26.9	2.3	28.5	2.1	13.7	2.4	19.0	2.4
Good	29.5	3.1	23.8	3.8	58.0	6.1	28.7	3.5	32.4	3.4	21.1	2.5	26.4	2.5
Moderate	30.2	5.4	25.4	5.0	52.0	4.2	20.9	4.4	25.3	4.4	15.5	3.2	22.1	3.6
Bad	24.8	8.2	25.2	8.2	42.7	11.3	34.9	9.5	25.1	8.2	10.8	5.8	15.6	6.5
Very-Bad	42.0	20.7	11.9	9.5	21.1	13.4	7.4	3.1	7.4	3.1	16.1	9.7	16.1	9.7
TOTAL	29.8	1.9	24.3	2.5	52.9	2.7	26.3	1.6	28.6	1.8	15.8	1.9	21.3	1.7

The following table reports the percent of people perceiving poor responsiveness in hospital inpatient care facilities, where "poor" is defined as a rating of "Moderate", "Bad" or "Very bad" in questions Q7418-Q7432 which have 5 response options (including "good" and "very good".. Ratings for each of the eight domains of hospital inpatient care responsiveness (including 15 questions) by patients have been presented here. There are two questions each for seven of the eight domains; the domain of choice has only one question. The following questions from the survey have been used to determine patient assessment of each responsiveness domain:

- (1) *Prompt attention*: travel time (Q7418) and wait time (Q7419).
- (2) *Dignity*: talked respectfully (Q7420) and privacy (Q7421).
- (3) *Communication*: clear explanation (Q7422) and time for questions (Q7423).
- (4) *Autonomy*: treatment information (Q7424) and involvement (Q7425).
- (5) *Confidentiality*: talk privately (Q7426) and confidentiality of records (Q7427).
- (6) *Choice of health care provider*: Q7428.
- (7) *Basic amenities*: cleanliness (Q7429) and space (Q7430).
- (8) *Social support*: family visit (Q7431) and external contact (Q7432).

Results are reported for the total WHS sample (category: "TOTAL"), and by the following sample sub-groups: sex, area of residence, age group, years of education, income quintiles, reason for visit, ownership (of health facility), and self-assessed health. Mean values and standard errors (SE) are reported for each category.

Sub-groups common to other tables were constructed in the same manner. Common sub-groups include sex (Q1001), area of residence (Q0104), age group (regrouping of reported age in Q1002), years of education (Q1010) and income quintiles. To determine income and subsequently income quintiles, an asset index was constructed for each household using responses to section 0700 on "Permanent Income Indicators" from the WHS household questionnaire.

Ownership, condition and self-assessed health sub-groups were constructed uniquely for the responsiveness section's tables. There are four categories of ownership: "Operated by the government" (Government), "Privately operated" (Private), "NGO" and "Other". To construct the ownership sub-group, information was combined from (a) Q7204, Q7205 and Q7301 for those utilizing ambulatory services, and (b) Q7200, Q7201 and Q7401 for those utilizing hospital inpatient services. The sub-group "Condition" used information from Q7403 ("Which of the following best describes the reason for your [child's] last overnight stay?"). The eight categories of Q7403 include high fever, diarrhoea, or cough; childbirth; arthritis; asthma; heart disease; bodily injury; minor surgery; and other. Self-assessed health was constructed using information from Q2000 ("In general, how would you rate your health today as?") in the WHS. Respondents were asked to select one of the following five categories: "Very good", "Good", "Moderate", "Bad" and "Very bad".

7.6 Importance of different domains of responsiveness: percent reporting "Extremely Important"

	Prompt Attention		Dignity		Communication		Autonomy		Confidentiality		Choice		Basic Amenities		Social Support	
	%	SE	%	SE	%	SE	%	SE	%	SE	%	SE	%	SE	%	SE
Sex																
Female	78.2	1.5	80.3	1.4	67.1	1.8	50.3	2.0	74.3	1.4	49.0	1.5	77.6	1.7	63.6	2.0
Male	77.6	1.1	80.4	1.5	67.8	1.3	51.7	1.9	74.9	1.4	48.4	1.8	78.5	1.1	66.5	1.4
Area of Residence																
Urban	81.1	3.0	82.7	3.8	71.1	5.2	50.7	7.5	84.5	3.0	50.7	5.6	80.8	3.4	67.7	6.2
Rural	77.6	1.2	80.1	1.2	67.0	1.4	51.0	1.8	73.5	1.4	48.5	1.5	77.7	1.4	64.6	1.6
Age Group																
18-29y	78.1	1.6	79.8	1.7	67.4	1.7	50.1	2.2	73.9	2.0	47.9	2.0	78.4	1.5	64.4	1.9
30-44y	78.8	1.4	82.4	1.3	66.9	1.6	50.7	2.6	76.1	1.4	49.6	2.2	79.0	1.6	65.5	2.0
45-59y	75.8	1.9	81.0	2.0	68.5	1.8	52.7	2.7	75.6	2.1	51.6	3.0	76.5	2.3	67.0	2.2
60-69y	79.3	2.4	80.4	3.2	67.4	4.5	51.9	3.6	74.4	3.5	45.7	3.5	77.5	3.6	60.9	3.8
70+y	76.8	2.8	73.9	3.3	67.1	3.0	54.0	4.1	70.4	3.5	47.5	5.4	73.4	2.8	64.7	3.3
Education Years																
0	78.6	1.7	82.5	2.1	70.3	2.0	53.3	3.3	71.3	1.8	53.2	2.6	78.3	2.9	71.1	2.5
1-5	78.3	1.8	78.4	1.6	66.7	1.5	51.2	2.0	73.5	2.0	50.6	1.8	76.1	1.6	63.4	1.7
6-11	75.4	1.7	80.1	1.8	63.7	2.1	47.1	2.1	75.7	1.6	44.1	1.6	77.9	1.6	62.6	2.3
12+	77.6	3.9	78.4	3.1	62.2	3.8	45.8	4.1	79.5	3.2	39.8	3.6	75.9	3.7	56.0	3.7
Income Quintiles																
Q1	76.3	2.3	78.0	1.8	69.2	3.0	52.5	1.8	68.2	1.7	48.9	2.6	76.9	2.0	65.5	2.2
Q2	78.6	1.8	81.0	1.9	69.0	1.6	50.3	2.7	73.6	2.1	51.6	2.9	78.3	1.7	67.1	2.9
Q3	77.7	1.9	79.5	1.9	65.4	2.3	51.2	2.7	73.0	1.8	51.8	2.0	77.4	1.9	62.5	2.7
Q4	76.1	1.9	80.2	1.6	65.2	2.3	48.1	3.4	76.6	1.8	42.3	2.9	77.3	2.2	61.7	2.2
Q5	77.7	2.7	79.1	3.2	63.7	3.1	48.9	3.6	80.7	2.7	43.8	3.1	75.6	3.2	61.1	3.4
Ownership																
Government	76.9	1.6	79.4	1.6	65.6	1.7	50.7	1.9	73.8	1.3	48.0	1.6	77.2	1.6	64.0	2.0
Private	83.6	1.5	85.6	1.5	70.4	2.1	55.4	2.5	75.8	2.7	52.7	2.4	81.7	1.9	66.6	2.4
NGO	86.6	9.0	86.7	8.8	51.1	11.6	45.5	11.4	84.4	9.9	31.7	7.0	93.4	4.3	85.0	8.7
Other	89.3	9.0	100.0	0.0	82.1	10.3	64.9	17.9	81.9	10.4	64.9	17.9	79.2	10.9	79.2	10.9
Self-Assessed Health																
Very-Good	79.3	1.0	82.3	1.2	67.3	1.2	49.8	1.5	76.7	1.4	47.9	1.7	80.0	1.2	65.7	1.4
Good	72.6	1.8	74.2	1.6	62.4	1.9	48.8	2.2	68.0	1.7	49.4	1.8	71.5	2.2	58.7	2.5
Moderate	78.1	2.1	79.8	1.9	68.7	3.0	55.1	4.6	74.4	2.0	50.0	3.1	78.5	2.4	66.3	3.0
Bad	86.8	2.1	90.7	2.0	84.6	2.7	59.9	7.8	82.0	1.8	50.6	7.6	84.1	3.3	78.8	2.9
Very-Bad	83.8	9.3	83.9	9.4	91.5	6.0	56.6	13.7	89.9	5.4	51.5	13.9	89.8	6.1	83.4	9.8
Type of Care																
Ambulatory-Adult	78.0	1.8	79.9	1.7	65.0	1.8	49.0	3.1	74.6	1.7	48.8	2.8	75.4	2.0	63.2	2.1
Ambulatory-Child	77.2	2.0	80.6	1.8	67.7	2.0	50.5	2.6	75.8	2.0	47.9	2.0	79.8	1.8	65.4	2.3
Inpatient-Adult	87.8	4.2	92.7	2.0	60.9	5.1	55.8	7.0	88.0	3.0	45.8	5.6	90.2	2.4	70.8	5.8
Inpatient-Child	88.2	4.9	85.6	5.0	64.2	6.0	45.2	8.5	69.3	6.8	43.9	8.6	77.5	6.4	45.6	9.8
Non-Users	77.1	1.4	79.4	1.3	68.8	1.5	52.2	1.9	72.9	1.6	49.6	1.5	77.7	1.4	65.1	1.7
TOTAL	78.0	1.1	80.4	1.1	67.4	1.3	50.9	1.8	74.6	1.3	48.7	1.5	78.0	1.3	64.9	1.6

This table shows the percent of people who rated a responsiveness domain as "Extremely Important". All survey respondents were queried on their perception of the importance of each of the eight responsiveness domains in section 7100 of the WHS where each domain was described in detail (Q7100-Q7107).

Respondents were asked to say whether the domain was "Extremely Important", "Very Important", "Moderately Important", "Slightly Important" or "Not

Important".

Results are reported for the total WHS sample (category: "TOTAL"), and by the following sample sub-groups: sex, area of residence, age group, years of education, income quintiles, ownership (of health facility), self-assessed health, and type of care. Mean values and standard errors (SE) are reported for each category.

Sub-groups common to other tables were constructed in the same manner. Common sub-groups include sex (Q1001), area of residence (Q0104), age group (regrouping of reported age in Q1002), years of education (Q1010) and income quintiles. To determine income and subsequently income quintiles, an asset index was constructed for each household using responses to section 0700 on "Permanent Income Indicators" from the WHS household questionnaire.

Ownership, self-assessed health and type of care sub-groups were constructed uniquely for the responsiveness section's tables. There are four categories of ownership: "Operated by the government" (Government), "Privately operated" (Private), "NGO" and "Other". To construct the ownership sub-group, information was combined from (a) Q7204, Q7205 and Q7301 for those utilizing ambulatory services, and (b) Q7200, Q7201 and Q7401 for those utilizing hospital inpatient services. Self-assessed health was constructed using information from Q2000 ("In general, how would you rate your health today as?") in the WHS. Respondents were asked to select one of the following five categories: "Very good", "Good", "Moderate", "Bad" and "Very bad". Type of care is a constructed sample sub-group combining information from Q7000, Q7001 and Q7016. There are five categories of type of care: "Ambulatory adult", "Ambulatory child", "Inpatient adult", "Inpatient child" and "Non users".

8.0 Expenditure Background Indicators (2002)

GDP per capita (\$)	139
Total health expenditure per capita (\$)	14
Total population (000)	11,871
Life expectancy at birth (Both sexes)	40.2
Life expectancy at birth (male)	39.8
Life expectancy at birth (female)	40.6
Healthy life expectancy at birth (Both sexes)	34.9
Healthy life expectancy at birth (Male)	35.0
Healthy life expectancy at birth (Female)	34.8
Government funded health expenditure as a percentage of total health expenditure	41.1
Social security funded health expenditure as a percentage of total health expenditure	0
Private health insurance premiums as a percentage of total health expenditure	1
Out-of-pocket payment as a percentage of total health expenditure	25.1

8.1 Distribution of health payments across different population groups

	Mean Household expenditure (EXP) in local currency	% Poor	% Impoverished	% Catastrophic	OOP % EXP	OOP % non-subsistence spending	Mean OOP in local currency
Catastrophic							
No	2,487	50.8	0.7		1.9	4.9	60
Yes	1,496	67.8	13.8		24.2	67.8	456
Poor							
No	4,214		4.4	7.1	4.3	9.2	178
Yes	732		0.0	13.6	4.2	13.6	32
Insurance							
No	2,325	52.9	2.1	10.6	4.2	11.6	99
Yes	11,173	7.1	0.0	4.3	3.7	6.0	481
Residence							
rural	1,794	58.7	2.4	11.8	4.5	12.6	86
urban	5,770	17.6	0.4	3.2	2.8	5.3	190
Income_Quintile							
1st(poorest)	328	100.0	0.0	12.0	4.3	11.9	15
2nd	848	100.0	0.0	14.3	4.0	14.4	37
3rd	1,336	62.5	6.9	13.8	4.1	14.5	59
4th	2,320	0.0	3.2	9.4	4.7	11.1	113
5th(richest)	7,093	0.0	0.4	3.1	3.9	5.7	284
total	2,383	52.6	2.1	10.5	4.2	11.5	101

OOP: Out of pocket

Household consumption expenditure (EXP) comprises both monetary and in-kind payment on all goods and services and the money value of the consumption of home-made products.

Poor - a household is considered poor when its total household expenditure is smaller than its subsistence spending
Impoverishment - a non-poor household is impoverished by health payment when it becomes poor after paying for health services.

Catastrophic health expenditure occurs when a household's total out-of-pocket health payments equals or exceeds 40% of the households capacity to pay or non-subsistence spending.

Out of pocket health payments (OOP) refer to payments made by households at the point they receive health services. It includes doctor's consultation fees, purchases of medication and hospital bills. Spending on alternative and/or traditional medicine is included. Expenditure on health related transportation and special nutrition is excluded. Insurance reimbursements are also excluded.

Subsistence spending - household subsistence spending is the minimum requirement to maintain a basic life in a society. A poverty line is used in the analysis as subsistence spending.

Food expenditure is the amount spent on all foodstuffs by the household plus the value of the family's own food production consumed within the household. It excludes expenditure on alcoholic beverages, tobacco and food consumption outside the home (e.g hotel and restaurants).

Household capacity to pay - is defined as a household's non-subsistence spending.

8.2 Percent distribution of structure of out-of-pocket health payments

	Inpatient	Outpatient	Traditional	Drugs	Other	Total
Catastrophic						
No	13.1	28.5	2.7	51.4	4.3	100
Yes	19.1	25.6	6.3	44.5	4.5	100
Poor						
No	17.3	25.9	4.0	48.1	4.6	100
Yes	8.9	33.1	6.2	48.3	3.5	100
Insurance						
No	15.4	27.1	4.5	48.8	4.3	100
Yes	33.3	29.4	0.0	27.7	9.7	100
Residence						
rural	14.9	27.2	5.5	48.7	3.7	100
urban	18.6	27.1	1.6	46.5	6.2	100
Income_Quintile						
1st(poorest)	19.7	33.3	4.4	38.7	3.9	100
2nd	6.1	35.1	6.1	49.3	3.4	100
3rd	11.3	24.9	7.1	50.1	6.7	100
4th	17.8	26.0	3.8	47.9	4.6	100
5th(richest)	17.2	26.7	3.9	48.1	4.0	100
total	15.9	27.1	4.4	48.1	4.4	100

8.3 Financial sources used by households for paying for health services

	Savings	Sold Items	Borrow from relatives &	Borrow from others	Health insurance	Current Income	Other
OOP%non_subsistence_spending							
less than 10%	3.1	14.0	7.4	6.8	0.2	61.3	9.7
10-20%	3.0	21.4	14.0	13.4	0.3	71.6	12.3
20-40%	1.7	18.4	5.7	12.6	0.1	78.1	12.7
above 40%	0.6	21.0	10.2	15.1	0.0	67.4	15.1
Hospitalization							
No	2.6	14.4	8.0	7.4	0.2	62.5	10.7
Yes	3.2	21.4	8.5	14.3	0.0	71.5	10.7
Insurance							
No	2.6	15.7	8.1	8.7	0.1	64.1	10.7
Yes	30.9	7.7	6.5	7.5	2.5	81.4	8.2
Residence							
rural	1.6	17.0	8.1	8.0	0.1	62.5	12.1
urban	9.1	8.2	7.7	12.5	0.3	74.2	2.8
Income_Quintile							
1st(poorest)	0.3	9.9	10.4	9.0	0.0	54.5	14.2
2nd	0.2	14.7	9.8	7.6	0.2	59.9	12.8
3rd	1.2	17.3	6.0	7.5	0.0	61.6	10.4
4th	1.6	18.0	7.3	9.6	0.2	72.0	9.1
5th(richest)	10.4	18.5	6.8	9.8	0.4	73.2	7.2
total	2.7	15.7	8.1	8.7	0.2	64.2	10.7

8.4 Insurance Coverage

	Insured	SE	Mandatory Insurance	SE	Voluntary Insurance	SE	Insured as dependent	SE	Mandatory and Voluntary	SE
Q1(poorest)	0.5	0.5	0.0	0.0	0.0	0.0	0.0	0.0	0.0	0.0
Q2	1.5	1.4	0.6	0.7	1.5	1.7	1.3	1.4	1.2	1.3
Q3	4.7	3.2	1.9	2.1	5.9	3.7	4.6	3.6	3.7	3.8
Q4	13.5	7.0	10.2	6.9	15.7	8.4	14.1	7.6	16.9	14.7
Q5(richest)	79.7	9.7	87.2	7.0	76.8	11.6	79.9	10.8	78.2	15.2
Total	100		100		100		100		100	
Number	151.0		57.0		121.0		111.0		30.0	

10.1 Inability to control the important things in life - q8000

	Never	SE	Almost never	SE	Sometimes	SE	Fairly often	SE	Very often	SE	Missing	SE	N
Gender													
Male	28.7	1.8	16.0	1.0	31.2	1.4	13.8	0.9	9.7	0.8	0.6	0.2	2,584
Female	31.3	1.5	13.5	0.8	32.2	1.2	12.7	1.0	9.3	1.2	1.1	0.3	2,713
M	0.0	0.0	0.0	0.0	0.0	0.0	0.0	0.0	0.0	0.0	0.0	0.0	
Residence													
Urban	35.1	3.2	14.5	2.7	32.5	2.6	12.5	1.6	4.4	1.4	1.0	0.4	818
Rural	29.1	1.5	14.8	0.5	31.5	1.2	13.4	0.8	10.4	0.7	0.8	0.2	4,479
M	0.0	0.0	0.0	0.0	0.0	0.0	0.0	0.0	0.0	0.0	0.0	0.0	
Income													
Q1(poorest)	30.2	1.8	13.2	1.3	30.6	1.9	14.3	1.3	10.5	1.3	1.1	0.4	1,017
Q2	27.6	2.8	12.6	1.2	31.7	2.4	14.5	1.4	13.4	1.5	0.2	0.1	1,023
Q3	27.0	1.9	15.7	1.4	31.9	2.2	15.1	2.1	9.3	1.2	1.1	0.3	1,015
Q4	33.3	2.4	15.8	1.7	34.6	2.2	9.8	1.8	5.4	1.3	1.1	0.6	969
Q5(richest)	30.0	1.5	18.8	1.7	31.2	1.5	12.9	1.4	6.4	1.2	0.9	0.4	989
M	38.0	6.5	6.7	1.5	26.9	5.0	11.8	2.8	16.7	3.2	0.0	0.0	284
Age													
18-29	34.4	1.8	15.3	0.9	31.6	1.6	10.6	0.8	7.1	0.7	0.9	0.2	2,351
30-44	28.3	1.7	15.3	1.2	33.2	1.6	14.3	1.0	8.1	1.0	0.7	0.4	1,538
45-59	25.4	1.7	12.8	1.8	31.0	2.0	16.5	1.8	13.7	1.5	0.6	0.3	845
60-69	24.5	3.8	15.8	1.8	26.1	2.7	17.9	2.8	14.8	3.3	1.0	0.6	333
70-79	26.7	5.5	11.3	3.3	31.6	4.2	13.6	2.2	16.4	2.6	0.3	0.4	176
80+	7.4	3.4	6.1	3.3	37.8	9.2	18.2	5.8	27.8	9.9	2.6	2.4	54
M	0.0	0.0	0.0	0.0	0.0	0.0	0.0	0.0	0.0	0.0	0.0	0.0	
All	30.0	1.4	14.7	0.6	31.7	1.1	13.3	0.7	9.4	0.6	0.8	0.2	5,297

10.2 Inability to cope - q8001

	Never	SE	Almost never	SE	Sometimes	SE	Fairly often	SE	Very often	SE	Missing	SE	N
Gender													
Male	26.5	1.7	13.1	1.1	38.4	1.1	12.6	0.7	8.9	0.9	0.6	0.2	2,584
Female	29.6	1.3	11.4	0.9	36.6	1.4	12.8	0.9	8.6	0.9	1.0	0.3	2,713
M	0.0	0.0	0.0	0.0	0.0	0.0	0.0	0.0	0.0	0.0	0.0	0.0	
Residence													
Urban	32.0	3.6	12.6	1.9	38.8	3.4	11.6	1.8	3.9	1.0	1.0	0.4	818
Rural	27.3	1.2	12.1	0.8	37.2	0.8	12.9	0.6	9.6	0.6	0.8	0.2	4,479
M	0.0	0.0	0.0	0.0	0.0	0.0	0.0	0.0	0.0	0.0	0.0	0.0	
Income													
Q1(poorest)	28.6	2.0	8.9	1.0	37.1	1.7	14.7	1.4	9.6	1.2	1.1	0.4	1,017
Q2	26.2	2.4	10.9	1.6	36.2	2.4	14.1	1.7	12.4	1.2	0.2	0.1	1,023
Q3	24.1	1.6	12.7	1.4	39.5	1.9	13.8	2.1	8.9	1.3	1.1	0.3	1,015
Q4	30.1	2.7	13.6	1.9	39.8	2.3	10.3	1.4	5.1	1.2	1.0	0.6	969
Q5(richest)	28.9	1.5	16.5	1.4	37.2	2.3	10.5	1.4	6.0	1.1	0.8	0.4	989
M	37.2	6.8	7.4	1.6	29.4	5.1	12.6	2.4	13.4	2.0	0.0	0.0	284
Age													
18-29	31.6	1.5	13.8	1.0	36.7	1.2	9.9	0.9	7.0	0.6	0.9	0.2	2,351
30-44	26.6	1.6	12.2	1.0	39.7	2.1	14.3	1.4	6.4	0.9	0.7	0.4	1,538
45-59	24.8	2.1	9.8	1.8	37.1	2.0	14.3	1.6	13.3	1.6	0.6	0.3	845
60-69	22.7	3.4	10.0	2.3	33.7	4.1	18.7	2.8	14.0	3.2	0.8	0.6	333
70-79	25.1	5.7	7.9	2.1	35.5	4.6	15.7	2.7	15.5	2.5	0.3	0.4	176
80+	7.5	3.8	7.5	2.2	42.3	9.8	14.7	5.8	25.5	10.0	2.5	2.4	54
M	0.0	0.0	0.0	0.0	0.0	0.0	0.0	0.0	0.0	0.0	0.0	0.0	
All	28.1	1.2	12.2	0.7	37.5	0.9	12.7	0.6	8.7	0.6	0.8	0.2	5,297

10.3 Satisfaction with your health - q8002

	Very dissatisfied	SE	Dissatisfied	SE	Neither satisfied nor dissatisfied	SE	Satisfied	SE	Very Satisfied	SE	Missing	SE	N
Gender													
Male	2.3	0.5	11.2	0.7	11.3	0.8	33.8	1.8	40.9	1.6	0.6	0.2	2,584
Female	3.2	0.5	10.0	1.1	12.1	0.8	36.6	1.6	36.7	1.6	1.3	0.3	2,713
M	0.0	0.0	0.0	0.0	0.0	0.0	0.0	0.0	0.0	0.0	0.0	0.0	
Residence													
Urban	4.1	1.0	5.1	0.8	11.7	1.2	38.3	3.0	39.0	3.3	1.8	0.7	818
Rural	2.5	0.4	11.6	0.9	11.7	0.4	34.7	1.6	38.7	1.5	0.8	0.2	4,479
M	0.0	0.0	0.0	0.0	0.0	0.0	0.0	0.0	0.0	0.0	0.0	0.0	
Income													
Q1(poorest)	2.8	0.8	13.9	1.5	10.3	1.0	36.1	2.4	35.8	1.6	1.0	0.3	1,017
Q2	3.3	0.9	12.2	1.6	11.9	1.0	34.4	2.5	37.8	2.5	0.4	0.2	1,023
Q3	2.8	0.7	10.0	1.2	12.3	1.3	33.8	2.1	40.0	2.4	1.2	0.3	1,015
Q4	1.6	0.5	7.8	1.4	10.9	1.2	37.8	2.4	40.8	2.3	1.2	0.6	969
Q5(richest)	2.5	0.7	7.3	1.4	14.0	1.6	35.4	2.0	39.6	2.3	1.3	0.5	989
M	5.1	1.9	16.0	1.9	9.3	2.0	31.0	5.7	38.4	6.8	0.2	0.2	284
Age													
18-29	2.2	0.5	8.5	0.8	10.4	0.7	30.8	1.5	47.0	1.3	1.1	0.2	2,351
30-44	2.8	0.7	10.8	0.9	11.8	1.0	36.4	1.9	37.1	2.1	1.1	0.4	1,538
45-59	3.0	1.1	11.2	2.2	13.7	2.2	40.6	2.7	30.8	3.1	0.6	0.3	845
60-69	3.1	1.6	11.7	3.0	14.9	2.8	43.2	3.1	26.3	3.5	0.8	0.6	333
70-79	5.1	2.0	24.1	4.4	11.9	2.2	46.2	5.6	12.4	3.7	0.3	0.4	176
80+	8.3	3.8	35.3	3.5	15.8	3.2	27.2	6.3	11.0	4.8	2.5	2.4	54
M	0.0	0.0	0.0	0.0	0.0	0.0	0.0	0.0	0.0	0.0	0.0	0.0	
All	2.7	0.4	10.6	0.7	11.7	0.4	35.2	1.5	38.7	1.4	1.0	0.2	5,297

10.4 Feeling safe when alone at home - q8011

	Completely safe	SE	Very safe	SE	Moderately safe	SE	Slightly safe	SE	Not safe at all	SE	Missing	SE	N
Gender													
Male	14.8	1.1	15.5	0.9	10.1	1.0	19.7	1.6	39.3	1.8	0.6	0.2	2,584
Female	14.2	1.6	18.0	0.9	8.9	0.7	19.2	0.8	39.1	1.7	0.8	0.2	2,713
M	0.0	0.0	0.0	0.0	0.0	0.0	0.0	0.0	0.0	0.0	0.0	0.0	
Residence													
Urban	8.3	2.0	18.0	2.0	11.3	1.4	19.2	2.2	41.5	4.1	1.7	1.1	818
Rural	15.6	1.3	16.6	0.6	9.1	0.6	19.5	0.9	38.7	1.2	0.5	0.1	4,479
M	0.0	0.0	0.0	0.0	0.0	0.0	0.0	0.0	0.0	0.0	0.0	0.0	
Income													
Q1(poorest)	16.8	1.4	17.8	1.8	7.0	0.9	16.7	1.3	40.9	2.2	0.6	0.2	1,017
Q2	15.1	2.0	17.6	1.0	7.9	1.0	18.9	1.2	40.1	1.4	0.4	0.2	1,023
Q3	14.8	2.0	16.8	1.3	8.8	1.5	23.8	1.9	35.3	2.3	0.6	0.2	1,015
Q4	16.2	2.5	16.9	1.6	11.3	1.5	16.7	1.2	38.0	2.6	0.8	0.4	969
Q5(richest)	8.5	1.1	14.9	1.9	12.4	1.4	21.8	2.3	41.1	2.3	1.2	0.7	989
M	17.8	3.4	16.0	2.8	9.6	3.1	16.2	2.0	40.3	5.6	0.1	0.0	284
Age													
18-29	14.5	1.2	18.2	1.2	10.7	0.9	19.1	0.9	36.7	1.6	0.8	0.3	2,351
30-44	14.3	1.5	15.5	1.0	8.6	1.0	18.4	1.6	42.9	1.9	0.2	0.1	1,538
45-59	13.9	1.8	15.6	1.8	9.4	0.9	21.8	1.4	38.8	2.0	0.6	0.3	845
60-69	16.1	3.4	16.2	3.0	5.5	1.4	22.6	2.7	37.5	3.1	2.1	1.0	333
70-79	13.9	3.6	12.4	2.2	8.0	2.5	16.0	3.3	48.9	4.6	0.7	0.6	176
80+	19.4	6.2	29.2	6.4	9.1	4.1	15.1	3.7	24.7	5.8	2.5	2.4	54
M	0.0	0.0	0.0	0.0	0.0	0.0	0.0	0.0	0.0	0.0	0.0	0.0	
All	14.5	1.1	16.8	0.6	9.5	0.6	19.4	0.8	39.2	1.2	0.7	0.2	5,297

10.5 Feeling safe when walking down the street alone after dark - q8012

	Completely safe	SE	Very safe	SE	Moderately safe	SE	Slightly safe	SE	Not safe at all	SE	Missing	SE	N
Gender													
Male	9.8	0.8	10.9	0.8	8.9	0.7	16.9	1.2	53.1	1.8	0.5	0.2	2,584
Female	9.0	1.1	10.1	1.0	7.2	0.7	17.2	0.9	55.6	1.2	0.8	0.2	2,713
M	0.0	0.0	0.0	0.0	0.0	0.0	0.0	0.0	0.0	0.0	0.0	0.0	
Residence													
Urban	5.1	1.7	7.3	1.5	9.9	1.5	16.3	1.9	60.6	3.3	0.9	0.3	818
Rural	10.2	0.9	11.1	0.6	7.7	0.6	17.2	0.7	53.2	1.2	0.6	0.1	4,479
M	0.0	0.0	0.0	0.0	0.0	0.0	0.0	0.0	0.0	0.0	0.0	0.0	
Income													
Q1(poorest)	11.9	0.9	12.8	1.7	7.3	0.9	13.0	0.9	54.5	2.0	0.5	0.2	1,017
Q2	9.7	2.0	10.5	1.2	6.7	1.1	17.7	1.1	54.9	1.8	0.4	0.2	1,023
Q3	8.7	1.2	13.2	1.2	8.0	1.3	19.7	1.5	49.9	2.6	0.5	0.2	1,015
Q4	11.2	2.8	10.5	1.6	8.1	1.3	17.0	1.6	52.4	2.9	0.8	0.4	969
Q5(richest)	5.0	0.6	6.9	1.2	9.2	1.2	17.8	1.7	60.1	2.6	1.1	0.4	989
M	11.6	2.1	5.2	2.3	11.4	4.1	17.4	2.6	54.0	7.1	0.4	0.3	284
Age													
18-29	8.9	1.1	11.9	1.0	8.3	0.7	17.2	1.0	53.3	2.0	0.4	0.1	2,351
30-44	9.5	1.3	9.1	1.0	7.4	0.8	17.1	2.5	56.7	2.8	0.1	0.1	1,538
45-59	9.4	1.5	9.7	1.5	10.2	1.2	15.6	2.0	53.8	1.8	1.4	0.5	845
60-69	12.4	2.8	10.1	2.7	5.9	1.6	17.6	2.1	51.8	3.3	2.2	1.0	333
70-79	9.8	2.2	8.9	1.4	4.2	1.2	18.7	2.9	57.3	4.1	1.2	1.1	176
80+	12.9	5.8	11.6	3.7	6.3	2.8	19.9	5.8	46.8	5.3	2.5	2.4	54
M	0.0	0.0	0.0	0.0	0.0	0.0	0.0	0.0	0.0	0.0	0.0	0.0	
All	9.4	0.8	10.5	0.6	8.0	0.5	17.1	0.7	54.3	1.2	0.6	0.1	5,297