

# **REPORT OF CHINA**

## TABLE OF CONTENTS

1	Introduction
2	Methodology
2.1	Sampling
2.2.1	Geographic Component of the Survey
2.2.2	The map
2.3	Survey Metrics
2.3.1	Sample deviation index
2.3.2	HH Sample deviation index
2.3.3	Response rate
2.3.4	Missing data
2.3.5	Reliability
3	Socio-Demographic Profile
3.1	Household composition by residence and age groups according to income quintile
3.2	Selected age distributions by income quintile
3.3	Characteristics of head of household by income quintile
3.4	Household population: percent distribution of the de jure population by age, residence, marital status and education according to sex
3.5	Background characteristics of respondents: percent distribution of men and women by age, residence, marital status and education
4	Risk Factors
4.1	Prevalence of smoking and average daily tobacco consumption
4.2	Prevalence of life time abstainers, non-heavy drinkers, infrequent heavy drinkers and frequent heavy drinkers
4.3	Prevalence of insufficient intake of fruit and vegetables and insufficient physical activity
4.4	Access to improved drinking-water: percent distribution of households by

- type of access to drinking water
- 4.5 Access to improved sanitation: percent distribution of households by type of sanitation facility
- 4.6 Solid Fuel use for cooking: percent distribution of households by type of cooking fuel used
- 5 Coverage
- 5.01 Tuberculosis
- 5.02 HIV Prevention and Screening
- 5.03 Antenatal Care and Mother to Child Transmission of HIV
- 5.04 Birth Delivery Care
- 5.05 Child's Health - Common Illness
- 5.06 Child's Health - Danger Signs
- 5.07 Vaccinations Meeting WHO Timeline Recommendations for Children 12 to 23 months of Age with Vaccination Card
- 5.08 Vaccination Status of Children 12-23 Months
- 5.09 Women's Cancer Screening
- 5.10 Oral Health and Injuries
- 5.11 Self Reported Non-Communicable Conditions
- 5.12 Mental Health Conditions
- 5.13 Cataracts
- 6 Health State Descriptions
- 6.01 In general, rate your health today - q2000
- 6.02 Difficulty with 'work and household activities' in last 30 days - q2001
- 6.03 Difficulty with 'moving around' in last 30 days - q2010
- 6.04 Difficulty with 'vigorous activities' in last 30 days - q2011
- 6.05 Difficulty with 'self-care' in last 30 days - q2020
- 6.06 Difficulty with 'taking care of and maintaining general appearance' in last 30 days - q2021
- 6.07 Amount of 'bodily aches or pains' in last 30 days - q2030

- 6.08 Amount of 'bodily discomfort' in last 30 days - q2031
- 6.09 Difficulty with 'concentrating or remembering things' in last 30 days - q2050
- 6.10 Difficulty with 'learning a new task' in last 30 days - q2051
- 6.11 Difficulty with 'personal relationships or participation in the community' in last 30 days - q2060
- 6.12 Difficulty with 'dealing with conflicts and tensions' in last 30 days - q2061
- 6.13 Difficulty with 'seeing and recognizing a person you know across the road (20m)' in last 30 days - q2071
- 6.14 Difficulty with 'seeing an object at arm's length or in reading' in last 30 days - q2072
- 6.15 Problem with 'sleeping' in last 30 days - q2080
- 6.16 Problem with 'feeling rested and refreshed' in last 30 days - q2081
- 6.17 Problem with 'feeling sad, low, or depressed' in last 30 days - q2090
- 6.18 Problem with 'worry or anxiety' in last 30 days - q2091
- 6.19 Adjusted for vignette responses
- 7 Health System Responsiveness
  - 7.1 Self-reported utilization of health services and perceived unmet need
  - 7.2 Patient assessed characteristics of ambulatory health services
    - 7.3.1 Patient assessment of responsiveness domains for ambulatory services: percent reporting "Moderate", "Bad" or "Very bad" - 1
    - 7.3.2 Patient assessment of responsiveness domains for ambulatory services: percent reporting "Moderate", "Bad" or "Very bad" - 2
  - 7.4 Patient assessed characteristics of hospital inpatient health services
    - 7.5.1 Patient assessment of responsiveness domains for hospital inpatient services: percent reporting "Moderate", "Bad" or "Very bad" - 1
    - 7.5.2 Patient assessment of responsiveness domains for hospital inpatient services: percent reporting "Moderate", "Bad" or "Very bad" - 2
  - 7.6 Importance of different domains of responsiveness: percent reporting "Extremely Important"
- 8 Health Expenditure, Insurance and Human Resources for Health

- 8.0 Expenditure Background Indicators (2002)
- 8.1 Distribution of health payments across different population groups
- 8.2 Percent distribution of structure of out-of-pocket health payments
- 8.3 Financial sources used by households for paying for health services
- 8.4 Insurance Coverage
- 8.5 Human resources for health
- 9.1 Adult Mortality Chart 1
- 9.2 Adult Mortality Chart 2
- 9.3 Adult Mortality Chart 3
- 9.4 Adult Mortality Chart 4
- 10 Stress and Social Capital
- 10.1 Inability to control the important things in life - q8000
- 10.2 Inability to cope - q8001
- 10.3 Satisfaction with your health - q8002
- 10.4 Feeling safe when alone at home - q8011
- 10.5 Feeling safe when walking down the street alone after dark - q8012

# 1. Introduction

The World Health Organization initiated the World Health Survey (WHS) as a *data collection platform* to obtain information on the health of populations and on health systems. The WHS responds to the need of countries for a detailed and sustainable health information system and gathers data through surveys to measure essential population health parameters. The WHS uses standard survey procedures and instruments for general population surveys to gather comparable data across WHO Member States. These methods and instruments have been refined through scientific review of literature, extensive consultations with international experts and large-scale pilot tests. WHS is designed to evolve through its implementation by continuous input from collaborators, including policy makers, survey institutions, scientists and other interested parties. The data is jointly owned by the countries and the WHO, and there is a commitment for a long-term data collection, building local capacity and using this information for health policy.

The objectives of the World Health Survey were to:

- develop a **means** of providing:
  - **valid, relevant, reliable** and **comparable** information on **outcomes, functions** and **inputs** to health systems
  - to **supplement** the information provided by routine **HIS**
- build the **evidence base** necessary for policy-makers:
  - to **routinely monitor** if health systems are achieving the **desired goals**
  - and in some countries, to assess if the **increase in health resources** is having the desired effect

The introductory chapter of each country report will provide details on the current sources of data from routine health information systems and ad hoc surveys. It will describe the health situation in the country and identify gaps. It will also present a brief overview on the health system organization within the country.

## 2. Sampling

The WHO sampling guidelines emphasized scientific principles of survey sampling as explicit standards for quality, included examples of good sampling plans, and identified quality assurance standards for countries to adhere to. WHO and technical advisers provided technical support to countries when needed. The following principles were used for sampling in the WHS:

1. The sample should target the *de facto* population (i.e. all people living in that country including guest workers, immigrants and refugees) and not *de jure* population (i.e. the citizens of that country alone) with complete geographic coverage of the country, if possible, or a representative geographic segment of the country.
2. A *sample frame* with 90% coverage that included all key subgroups of interest. Enumeration or listing of households to update the frame was recommended.
3. The WHS sample identified all adult members of the general population aged 18 years or older as its sample. Households are selected using a random, stratified sampling procedure. One individual per household is then selected through a random selection procedure using the Kish table method.
4. The WHS used a sampling strategy which encompasses a known non-zero selection probability for any individual included in the study. This makes it possible to extrapolate the data to the whole population. Households and individuals are selected with a known probability in order to provide selection probabilities for each household and individual in the data set.
5. The WHS sampling strategy was without replacement and categories of non-respondents were clearly defined.
6. The WHS used GPS devices in certain countries and digitized maps to geocode the data within specified guidelines.

Each national report will present a detailed description of the sampling strategy and the allocation tables

---

## 2.2.1 Geographic Component of the Survey

---

Geographic Information refers to any information associated with a location on the Earth's surface. This location can be associated to a coordinate (latitude/longitude), a place's name, a postal address or any other geographic object.

Household Surveys represent an important source of information. If the geographic location of the surveyed clusters is collected at the same time that the interview is conducted users are then able to integrate the spatial dimension in their analysis

The geographic component of the WHO WHS is stored in two sections of the questionnaire:

- 0100 Sampling Information allowing the link between the location of each cluster and the sampling frame used for the survey. This section has also been used in order to collect the type of setting in which each household was located at the time of the survey. This section of the questionnaire has been used for all the countries part of the WHO WHS
- 0200 Geocoding Information for the collection of the latitude and longitude of each household. This section has only been used in 27 countries where GPS devices were available or have been provided. The choice of these countries has been done on the basis of the availability of digital maps delimiting the surveyed clusters, the field data collection planning and their distribution within the different WHO regions. Specific training and field material have been prepared and used by the interviewers or field supervisors in these countries in order to collect the latitude and longitude of each of the surveyed household.

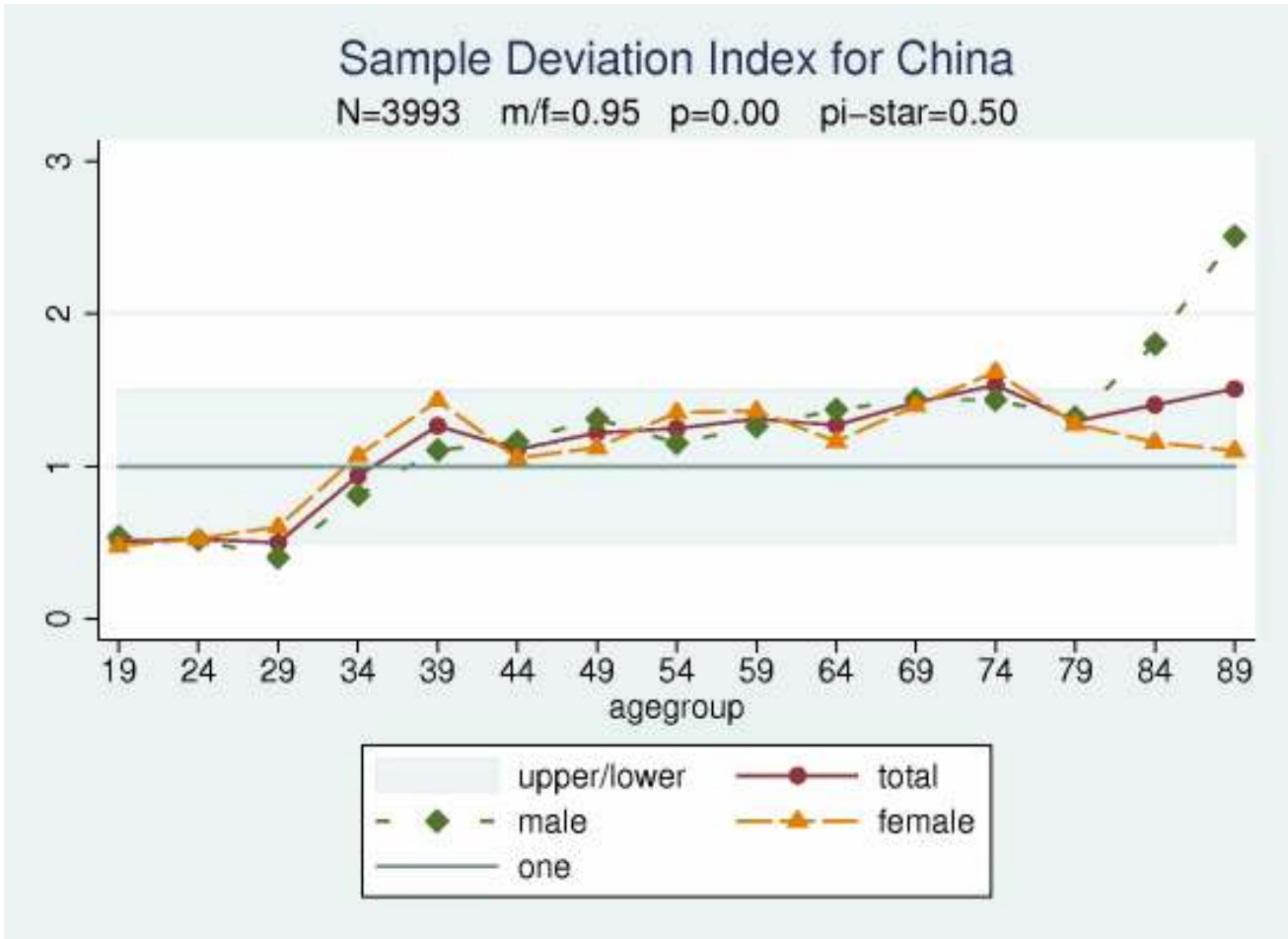
As the sampling design may not always include the administrative structure of the country and as the codes entered in the data set for the sampling level needed to be labelled, a key correspondence table containing this information has been collected after the survey itself.

Once all the survey data and the key correspondence table available a specific protocol has been applied to the two sections mentioned earlier in order to clean eventual data collection or data entry mistakes as well as to fill the gaps in close collaboration with the survey institution.

The questionnaire as well as the training material and data cleaning protocols used can be downloaded from the WHO WHS web site (<http://www.who.int/healthinfo/survey/en/index.html>) in the "Survey Instrument and Related Documents" section.

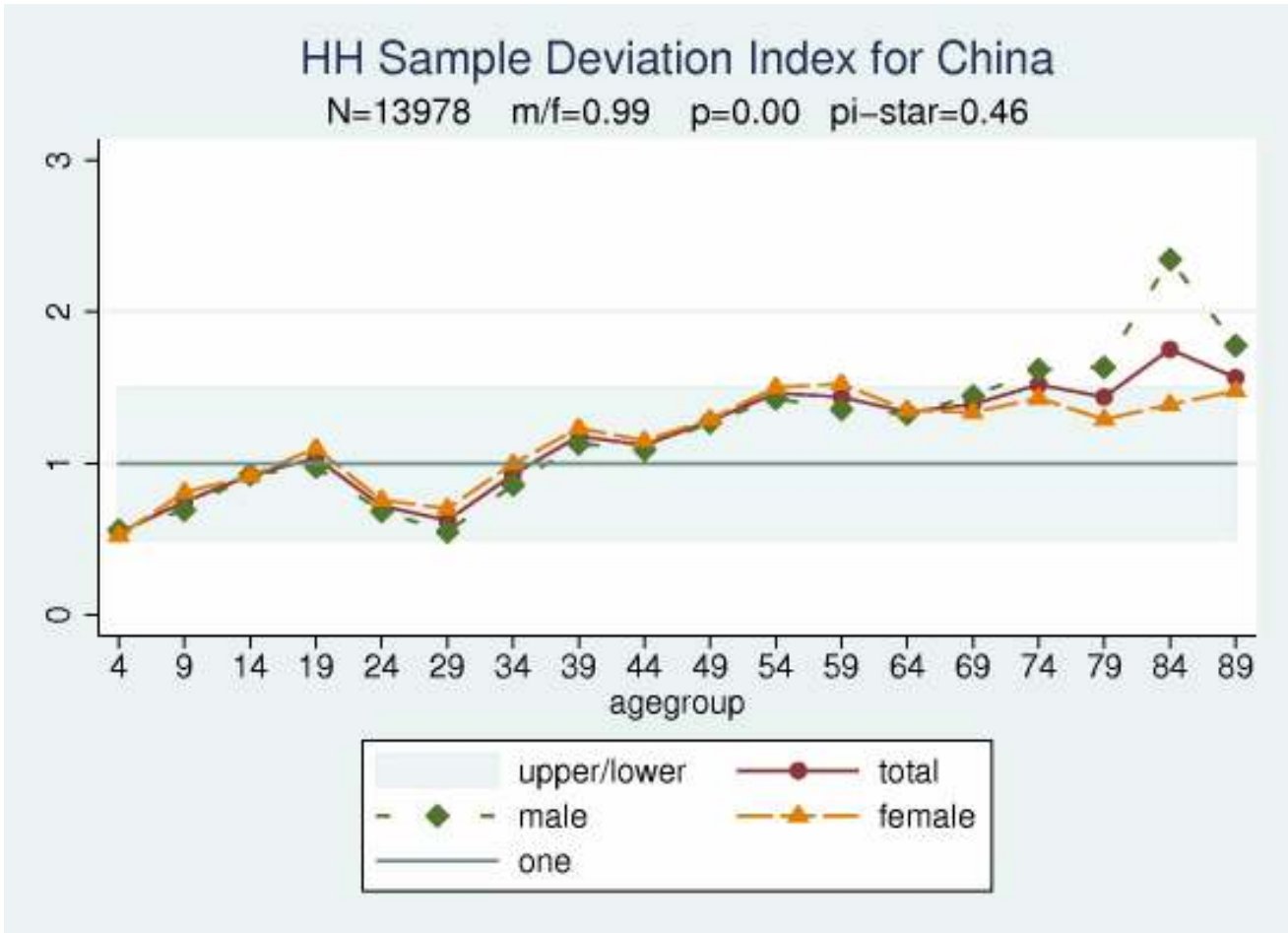


2.3.1 Sample deviation index



SDI

2.3.2 HH Sample deviation index



HDI

---

### 2.3.3 Response rate

---

---

#### Household

Selected	4,300
----------	-------

Interviewed	3,991
-------------	-------

Percentages	93
-------------	----

#### Individual

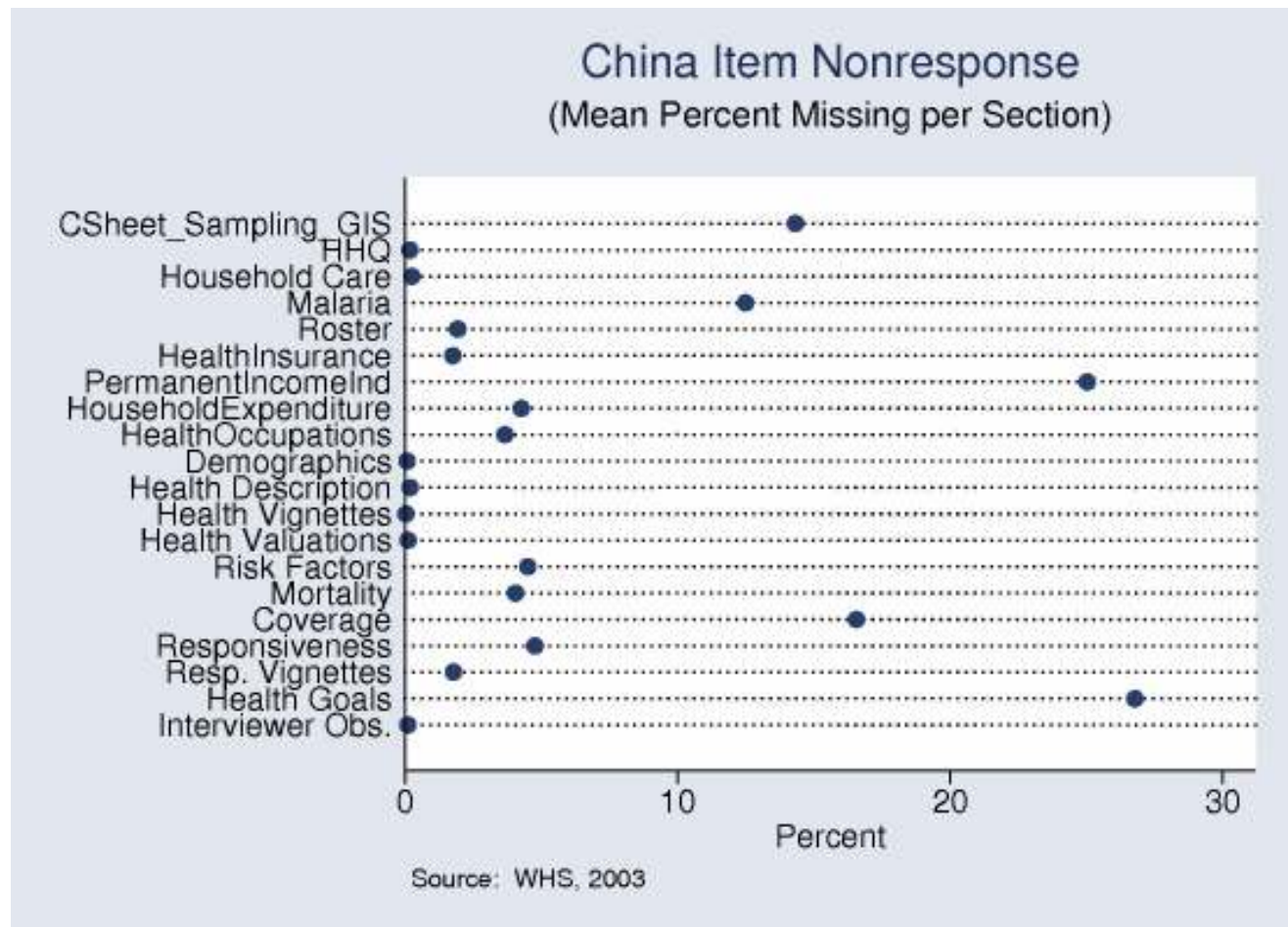
Selected	3,993
----------	-------

Interviewed	3,992
-------------	-------

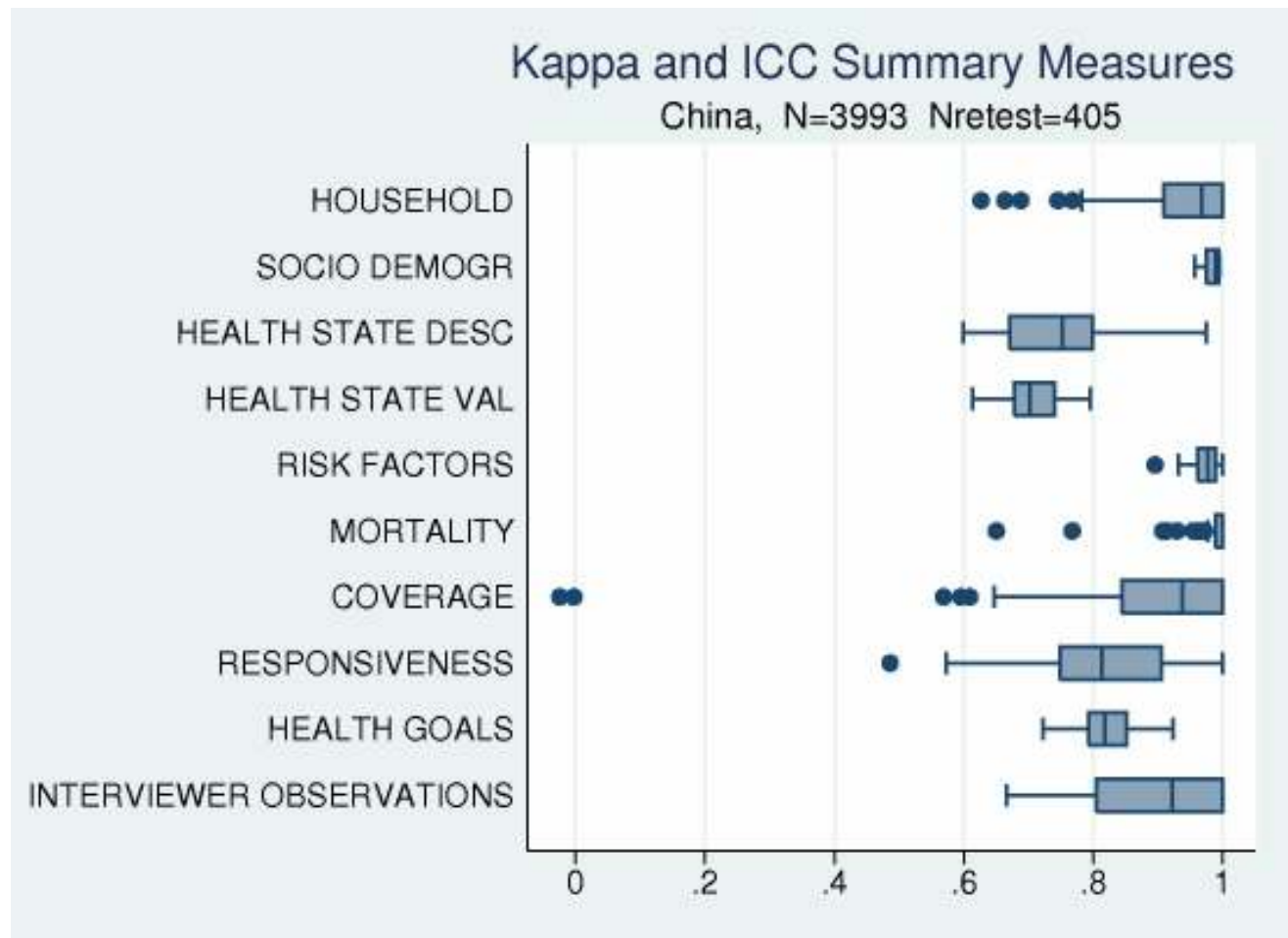
Percentages	100
-------------	-----

---

### 2.3.4 Missing data



### 2.3.5 Reliability



### 3.1 Household composition by residence and age groups according to income quintile

	Percent Rural	SE	Mean Number of									
			Household members	SE	Children < 2 years	SE	Children < 5years	SE	Children 5 -17 years	SE	Persons 18+ years	SE
Q1(poorest)	94.6	1.53	3.3	0.07	0.0	0.01	0.1	0.01	0.9	0.04	2.3	0.04
Q2	79.2	5.72	3.4	0.16	0.0	0.01	0.1	0.02	0.8	0.07	2.5	0.08
Q3	64.1	5.57	3.6	0.10	0.0	0.01	0.1	0.03	0.8	0.10	2.7	0.05
Q4	55.2	5.70	3.8	0.09	0.0	0.01	0.2	0.02	0.7	0.10	2.9	0.06
Q5(richest)	47.6	6.72	3.9	0.11	0.1	0.01	0.2	0.03	0.8	0.05	2.9	0.11
All	67.0	4.41	3.6	0.05	0.0	0.00	0.2	0.01	0.8	0.06	2.7	0.03

Note: table based on de jure members of household i.e. usual residents

---

### 3.2 Selected age distributions by income quintile

---

	<b>Females Age 18–49</b>	<b>Persons Age 50+</b>	<b>Persons Age 60+</b>
Q1(poorest)	458	612	350
Q2	606	738	432
Q3	767	880	536
Q4	905	995	486
Q5(richest)	714	678	319
All	3,450	3,903	2,122

Note: table based on de jure members of household i.e. usual residents

---

### 3.3 Characteristics of head of household by income quintile

---

	Mean Age of Head	SE	Median Education of Head	Percent Female Head	SE
Q1 (poorest)	49	0.98	3	15.4	2.27
Q2	49	2.25	3	15.5	3.29
Q3	48	1.24	4	17.5	3.23
Q4	46	0.94	4	13.1	2.28
Q5 (richest)	45	0.60	5	9.3	1.26
All	47	0.58	4	14.3	1.71

#### Education

1=no formal education

2=less than primary school

3=primary school completed

4=secondary school completed

5=high school (or equivalent) completed

6=college/pre-university/university completed

7=post graduate degree completed

Note: table based on de jure members of household i.e. usual residents



### 3.4 Household population: percent distribution of the de jure population by age, residence, marital status and education according to sex

	Male	SE	Female	SE	Missing	Total	SE
<b>Age</b>							
0-4	4.9	0.50	3.3	0.30		4.10	0.30
5-14	15.9	1.00	15.1	1.60		15.50	1.30
15-29	19.8	0.70	21.1	1.10		20.50	0.80
30-44	24.2	0.70	24.8	1.20		24.50	0.90
45-59	20.4	0.70	20.7	1.00		20.50	0.80
60-69	7.9	0.30	7.8	0.40		7.80	0.30
70-79	5.1	0.60	5.4	0.60		5.30	0.60
80+	1.8	0.20	1.8	0.20		1.80	0.20
Missing	0.0	0.00	0.0	0.00		0.00	0.00
<b>Residence</b>							
Urban	26.7	4.10	28.3	4.00		27.50	4.00
Rural	73.3	4.10	71.7	4.00		72.50	4.00
Missing	0.0	0.00	0.0	0.00		0.00	0.00
<b>Marital_Status</b>							
Never	36.7	0.80	31.5	1.70		34.10	1.20
Currently	58.8	0.80	59.9	1.30		59.30	1.00
Separated	0.1	0.10	0.2	0.10		0.10	0.10
Divorced	0.6	0.10	0.6	0.20		0.60	0.10
Widowed	2.6	0.20	6.5	0.60		4.60	0.30
CoHabitng	0.1	0.10	0.1	0.00		0.10	0.00
Missing	1.2	0.20	1.2	0.30		1.20	0.20
<b>Education</b>							
NoFormal	6.6	0.70	15.4	1.20		11.10	0.90
LessthanPrimary	12.5	1.40	11.7	1.00		12.10	1.10
Primary	26.2	1.20	26.8	1.30		26.50	1.10
Secondary	32.6	1.30	26.3	1.00		29.40	1.10
HighSchool	13.8	0.90	12.5	1.10		13.10	0.90
College	7.4	1.40	6.5	1.30		6.90	1.30
PostGraduate	0.3	0.10	0.1	0.00		0.20	0.00
Missing	0.6	0.10	0.7	0.20		0.60	0.20
Total	100.0		100.0			100.00	
Number	6,952.0		7,026.0			13,978.00	
Number of Households						3,991.00	

### 3.5 Background characteristics of respondents: percent distribution of men and women by age, residence, marital status and education

	Male	SE	Female	SE	Missing	Total	SE
<b>Age</b>							
18-29	16.5	1.40	20.1	1.50		18.30	1.20
30-44	32.2	2.50	32.2	3.00		32.20	2.50
45-59	31.0	2.00	29.7	1.70		30.40	1.60
60-69	11.7	1.00	9.5	0.60		10.60	0.50
70-79	6.4	0.90	6.9	1.20		6.60	0.90
80+	2.3	0.50	1.5	0.30		1.90	0.30
Missing	0.0	0.00	0.0	0.00		0.00	0.00
<b>Residence</b>							
Urban	30.2	4.80	31.4	4.00		30.80	4.30
Rural	69.8	4.80	68.6	4.00		69.20	4.30
Missing	0.0	0.00	0.0	0.00		0.00	0.00
<b>Marital_Status</b>							
Never	12.7	1.10	10.0	0.80		11.40	0.80
Currently	82.6	1.10	81.2	1.40		81.90	0.70
Separated	0.1	0.00	0.1	0.00		0.10	0.00
Divorced	0.7	0.20	0.8	0.20		0.70	0.20
Widowed	3.8	0.60	7.9	1.20		5.90	0.70
CoHabiting	0.2	0.10	0.1	0.10		0.10	0.10
Missing	0.0	0.00	0.0	0.00		0.00	0.00
<b>Education</b>							
NoFormal	4.9	0.80	16.2	1.50		10.70	1.00
LessthanPrimary	9.8	1.90	9.6	1.20		9.70	1.50
Primary	23.9	1.60	25.2	2.20		24.50	1.60
Secondary	34.1	2.00	26.2	2.00		30.10	1.60
HighSchool	16.1	1.40	14.7	1.30		15.40	0.70
College	10.7	2.40	8.0	1.50		9.30	1.80
PostGraduate	0.5	0.10	0.1	0.10		0.30	0.10
Missing	0.0	0.00	0.0	0.00		0.00	0.00
Total	100.0		100.0			100.00	
Number	1,957.0		2,036.0			3,993.00	

#### 4.1 Prevalence of smoking and average daily tobacco consumption

	Current daily smoker	SE	Smoker, not daily	SE	Non-smoker	SE	Missing	Average daily tobacco consumption*	SE	Number of respondents
<b>Sex</b>										
Male	45.7	1.50	11.6	1.10	42.5	1.30	0.2	17.4	0.50	1,957
Female	1.9	0.30	1.6	0.50	96.5	0.60	0.0	12.0	1.10	2,036
Missing										0
<b>Residence</b>										
Urban	17.5	1.10	8.5	1.30	73.9	1.60	0.0	15.3	1.00	1,229
Rural	25.9	1.40	5.6	0.60	68.3	1.20	0.2	17.8	0.50	2,764
Missing										0
<b>Income_Quintile</b>										
Q1	32.4	3.40	6.6	1.20	61.0	3.30	0.0	17.1	0.70	566
Q2	24.7	2.10	8.9	1.70	65.9	1.70	0.5	16.4	1.10	732
Q3	26.4	3.40	5.5	0.90	67.9	3.50	0.1	18.0	0.70	893
Q4	19.2	1.90	6.2	0.90	74.5	2.00	0.0	16.5	0.60	1,008
Q5	17.2	1.90	5.8	2.10	77.0	3.00	0.0	18.5	1.60	775
Missing										19
<b>Age</b>										
18-29	12.9	1.40	8.0	1.20	79.1	2.00	0.0	14.9	0.80	732
30-44	24.7	1.40	6.9	0.90	68.3	1.30	0.1	18.2	0.70	1,286
45-59	26.9	2.50	5.9	0.90	66.9	2.30	0.3	18.8	0.90	1,212
60-69	25.3	2.30	5.6	1.20	69.1	2.30	0.0	14.7	0.90	422
70-79	26.8	3.90	5.7	2.40	67.6	4.50	0.0	12.7	1.30	265
80+	20.3	4.30	3.6	2.70	76.1	5.20	0.0	15.8	3.40	76
Missing										0
All	23.3	1.30	6.5	0.70	70.0	1.10	0.1	17.2	0.50	3,993

\* Denominator used is current daily smoker

## 4.2 Prevalence of life time abstainers, non-heavy drinkers, infrequent heavy drinkers and frequent heavy drinkers

	Life time abstainers	SE	Non-heavy drinkers	SE	Infrequent Heavy Drinkers*	SE	Frequent Heavy drinkers**	SE	Missing	Number of respondents
<b>Sex</b>										
Male	55.5	2.10	37.5	2.20	2.9	0.60	3.9	1.20	0.2	1,957
Female	86.3	1.30	13.6	1.30	0.1	0.10	0.0	0.00	0.0	2,036
Missing										0
<b>Residence</b>										
Urban	75.4	2.50	23.1	2.70	0.5	0.30	0.9	0.50	0.1	1,229
Rural	69.3	1.80	26.3	1.50	1.9	0.40	2.4	0.80	0.1	2,764
Missing										0
<b>Income_ Quintile</b>										
Q1	74.3	4.50	22.2	4.50	1.7	0.80	1.9	0.60	0.0	566
Q2	74.4	2.60	21.9	2.60	2.0	0.60	1.8	0.70	0.0	732
Q3	72.1	3.50	23.5	3.50	1.2	0.50	2.7	0.90	0.5	893
Q4	71.1	1.60	26.4	2.30	1.1	0.30	1.5	1.00	0.0	1,008
Q5	65.4	4.00	31.2	3.90	1.6	0.50	1.9	0.70	0.0	775
Missing										19
<b>Age</b>										
18-29	79.1	3.70	19.7	3.60	0.6	0.30	0.2	0.10	0.4	732
30-44	70.0	2.20	25.3	2.60	2.5	0.80	2.2	0.70	0.0	1,286
45-59	66.1	1.80	29.4	1.60	1.2	0.30	3.2	1.00	0.1	1,212
60-69	74.4	3.10	22.2	2.80	1.8	0.80	1.5	0.70	0.0	422
70-79	72.0	5.00	27.1	5.00	0.0	0.00	0.9	0.60	0.0	265
80+	75.9	7.50	24.1	7.50	0.0	0.00	0.0	0.00	0.0	76
Missing										0
All	71.2	1.50	25.3	1.30	1.5	0.30	2.0	0.60	0.1	3,993

\*Infrequent heavy drinkers: 1-2 days with 5 or more standard drinks per week(last 7 days)

\*\*Frequent heavy drinkers: 3 or more days with 5 or more standard drinks per week(last 7 days)

### 4.3 Prevalence of insufficient intake of fruit and vegetables and insufficient physical activity

	Fruit and vegetable intake						Physical Activity					Number of respondents
	*Insufficient	SE	Sufficient	SE	Missing	**Insufficient	SE	Sufficient	SE	Missing		
Sex												
Male	94.9	1.60	5.1	1.60	0.0	9.1	1.70	90.9	1.70	0.0	1,957	
Female	96.6	0.80	3.4	0.80	0.0	10.9	2.10	89.1	2.10	0.0	2,036	
Missing											0	
Residence												
Urban	98.4	0.50	1.6	0.50	0.0	16.4	3.10	83.6	3.10	0.0	1,229	
Rural	94.6	1.30	5.4	1.30	0.0	7.2	2.10	92.8	2.10	0.0	2,764	
Missing											0	
Income_Quintile												
Q1	89.7	2.40	10.3	2.40	0.0	5.2	1.30	94.8	1.30	0.0	566	
Q2	93.3	1.70	6.7	1.70	0.0	6.0	1.80	94.0	1.80	0.0	732	
Q3	96.7	0.90	3.3	0.90	0.0	8.7	1.90	91.3	1.90	0.0	893	
Q4	98.4	0.70	1.6	0.70	0.0	12.4	2.10	87.6	2.10	0.0	1,008	
Q5	97.9	0.90	2.1	0.90	0.0	15.6	4.00	84.4	4.00	0.0	775	
Missing											19	
Age												
18-29	95.5	1.50	4.5	1.50	0.0	11.8	3.60	88.2	3.60	0.0	732	
30-44	94.2	1.30	5.8	1.30	0.0	9.5	2.20	90.5	2.20	0.0	1,286	
45-59	95.8	1.10	4.2	1.10	0.0	7.2	1.40	92.8	1.40	0.0	1,212	
60-69	98.2	0.70	1.8	0.70	0.0	8.3	1.40	91.7	1.40	0.0	422	
70-79	99.2	0.50	0.8	0.50	0.0	18.3	4.50	81.7	4.50	0.0	265	
80+	98.8	1.20	1.2	1.20	0.0	26.4	4.30	73.6	4.30	0.0	76	
Missing											0	
All	95.8	0.90	4.2	0.90	0.0	10.0	1.80	90.0	1.80	0.0	3,993	

\*Insufficient intake of fruit/vegetables: less than 5 servings of fruit/vegetables per one typical day

\*\*Insufficient physical activity: less than 150 minutes per week(last 7 days) spent on walking/moderate activity/vigorous activity

#### 4.4 Access to improved drinking-water: percent distribution of households by type of access to drinking water

	Piped into households	SE	other improved sources	SE	Total improved sources	SE	No improved sources	SE	Missing	Number of households
<b>Residence</b>										
Urban	98.5	0.50	0.9	0.40	99.4	0.20	0.5	0.10	0.2	1,315
Rural	60.8	7.00	24.5	6.40	85.2	2.40	14.8	2.40	0.0	2,676
Missing	0.0	0.00	0.0	0.00	0.0	0.00	0.0	0.00	0.0	0
<b>Income_Quintile</b>										
Q1(poorest)	23.2	5.00	37.0	7.90	60.2	5.80	39.8	5.80	0.0	667
Q2	53.0	9.30	33.5	8.20	86.6	2.70	13.3	2.70	0.2	774
Q3	84.3	5.10	13.0	4.40	97.4	1.00	2.6	1.00	0.1	891
Q4	95.3	2.50	4.2	2.50	99.5	0.20	0.5	0.20	0.0	919
Q5(richest)	99.5	0.20	0.4	0.20	99.9	0.10	0.1	0.10	0.0	717
Missing	63.8	17.20	12.1	5.20	75.9	16.10	24.1		0.0	23
Total	73.2	5.40	16.7	4.70	89.9	1.70	10.1	1.70	0.0	3,991

other improved sources: public standpipe/protected tube well/borehole/protected dug well/protected spring/rainwater collection

no improved sources: unprotected well/unprotected spring/water taken directly from a pond or stream/tanker truck water/vendor provided water

#### 4.5 Access to improved sanitation: percent distribution of households by type of sanitation facility

	Flush toilet to sewage system	SE	Other improved toilet facilities	SE	Total improved sanitation	SE	No improved sanitation	SE	Missing	Number of households
<b>Residence</b>										
Urban	65.2	6.10	22.5	3.50	87.6	3.20	12.1	3.20	0.2	1,315
Rural	9.8	1.80	47.8	3.90	57.6	4.90	42.4	4.90	0.0	2,676
Missing	0.0	0.00	0.0	0.00	0.0	0.00	0.0	0.00	0.0	0
<b>Income_Quintile</b>										
Q1(poorest)	1.8	0.50	18.1	4.60	19.9	4.80	80.1	4.80	0.0	667
Q2	11.1	3.20	29.2	4.70	40.4	6.50	59.6	6.50	0.0	774
Q3	29.5	4.50	46.2	4.70	75.7	4.60	24.2	4.60	0.1	891
Q4	39.4	4.60	52.5	4.00	91.9	2.60	7.8	2.60	0.2	919
Q5(richest)	53.6	5.50	45.4	5.20	99.0	0.50	1.0	0.50	0.0	717
Missing	48.1	15.00	36.1	16.30	84.2	5.90	15.8	5.90	0.0	23
Total	28.0	3.30	39.5	2.60	67.5	4.10	32.4	4.10	0.1	3,991

other improved sanitation facilities: connection to septic system/pour-flush latrine/covered dry latrine(with privacy) [provided facilities not shared]  
no improved sanitation: uncovered dry latrine(without privacy)/bucket latrine/no facilities(open defecation)

#### 4.6 Solid Fuel use for cooking: percent distribution of households by type of cooking fuel used

	Electricity, Gas	SE	Kerosene	SE	Solid fuels on improved stove	SE	Solid fuels on traditional stove	SE	Total solid fuel use	SE	Missing	Number of households
<b>Residence</b>												
Urban	84.8	4.80	0.3	0.30	0.7	0.50	14.0	4.50	14.7	4.70	0.2	1,315
Rural	49.2	5.10	0.0	0.00	10.1	3.40	40.7	6.60	50.8	5.10	0.0	2,676
Missing	0.0	0.00	0.0	0.00	0.0	0.00	0.0	0.00	0.0	0.00	0.0	0
<b>Income_ Quintile</b>												
Q1(poorest)	9.7	2.40	0.1	0.10	11.2	4.50	79.0	5.90	90.3	2.40	0.0	667
Q2	31.6	5.50	0.4	0.30	13.7	4.20	54.3	6.70	68.0	5.60	0.0	774
Q3	67.3	4.80	0.0	0.00	7.3	3.30	25.4	5.60	32.6	4.80	0.1	891
Q4	87.1	2.00	0.2	0.20	3.3	2.20	9.3	2.50	12.6	1.80	0.1	919
Q5(richest)	99.1	0.30	0.0	0.00	0.3	0.30	0.7	0.40	0.9	0.30	0.0	717
Missing	50.7	15.30	0.0	0.00	3.5	2.70	45.8		49.3		0.0	23
Total	60.9	4.10	0.1	0.10	7.0	2.20	31.9	4.90	38.9	4.10	0.0	3,991



## 5.01 Tuberculosis

		Tuberculosis			
	Total	Need	Coverage	SE	M
Sex					
Female	2,036	2.8	21.2	10.3	0.0
Male	1,957	3.1	16.5	5.1	0.0
Missing	0				
Residence					
Urban	1,229	2.8	20.5	7.8	0.0
Rural	2,764	3.0	18.0	8.0	0.0
Missing	0				
Income_Quintile					
Q1(poorest)	566	7.7	12.7	7.3	0.0
Q2	732	3.1	15.1	10.0	0.0
Q3	893	2.0	30.1	17.4	0.0
Q4	1,008	2.3	22.0	17.5	0.0
Q5(richest)	775	1.4	25.2	10.8	0.0
Missing	19				
Age					
18-29	732	0.6	89.6	13.2	0.0
30-44	1,286	2.7	13.0	6.5	0.0
45-59	1,212	3.0	15.6	8.4	0.0
60-69	422	5.0	10.8	7.7	0.0
70-79	265	5.6	30.2	7.5	0.0
80+	76	8.1	17.2	11.5	0.0
Missing	0				
Total	3,993	3.0	18.7	6.1	0.0

**M = % Missing of Covered      SE= Standard Error of % Covered**

**Tuberculosis Indicators:**

**"Need" = % of all respondents with self-reported continuous cough lasting 3 weeks, OR had blood in phlegm, OR had coughed blood in the last 12 months**

**"Coverage" = % of respondents with self reported symptoms who indicated receiving a TB screening test in the last 12 months.**

## 5.02 HIV Prevention and Screening

	Total (persons of reproductive age 18-49)	Voluntary Counselling and Testing for HIV/AIDS				Condom Usage			
		Need	Coverage	SE	M	Need	Coverage	SE	M
Sex									
Females	1,295	81.5	0.1	0.1	2.8	1.0	44.0	21.3	0.0
Males	1,214	77.8	0.1	0.0	0.1	2.3	85.2	5.5	0.9
Missing									
Residence									
Urban	693	81.0	0.3	0.1	2.0	1.6	60.9	8.2	2.4
Rural	1,817	79.2	0.0	0.0	1.4	1.7	76.5	10.8	0.0
Missing									
Income_Quintile									
Q1(poorest)	336	79.9	0.0	0.0	0.4	0.4	27.6	22.9	0.0
Q2	452	80.0	0.0	0.0	0.2	1.6	93.0	7.1	0.0
Q3	559	77.8	0.0	0.0	2.0	2.9	76.7	9.2	0.0
Q4	633	80.7	0.1	0.1	2.7	1.3	44.8	0.5	3.3
Q5(richest)	518	80.1	0.4	0.1	1.6	1.7	79.8	14.0	0.0
Missing	12								
Total	2,510	79.7	0.1	0.0	1.5	1.6	72.4	8.2	0.6

M = % Missing of Covered      SE= Standard Error of % Covered

**HIV Prevention and Screening Indicators:**

"Total" = number of respondents of reproductive age.

"Voluntary Counselling and Testing for HIV/AIDS Need" = % of respondents of reproductive age who are sexually active, i.e. have had sexual intercourse in the last 12 months.

"Voluntary Counselling and Testing for HIV/AIDS Coverage" = % of respondents of reproductive age who are sexually active who indicated having taken an HIV test and receiving the results of test.

"Condom Usage Need" = % of respondents of reproductive age whose last sexual encounter during the last 12 months is classified as risky sexual behavior, i.e. having had sexual intercourse with a non-cohabitating partner .

"Condom Usage Coverage" = % of respondents of reproductive age who used a condom last time had risky sex during the last 12 months (with non-cohabitating partner).

### 5.03 Antenatal Care and Mother to Child Transmission of HIV

	Antenatal Care											Maternal to Child HIV Trans.			
	Women 18-49	Birth in last 5 years	Cov	SE	Visit 1x	Visit 2x	Visit 3x	Blood pressure checked	Blood sample taken	Told Signs of Pregnancy Complications	M	Birth in last 2 years	Cov	SE	M
<b>Residence</b>															
Urban	366	18.2	52.5	6.9	83.4	82.7	80.6	85.5	69.1	63.0	15.8	7.0	13.0	5.8	0.0
Rural	930	20.7	48.3	4.5	86.0	84.0	80.7	79.5	63.2	56.7	14.9	4.5	0.0	0.0	3.4
Missing															
<b>Income_Quintile</b>															
Q1(poorest)	174	12.3	26.4	12.6	71.5	67.0	63.7	62.5	28.4	47.5	29.2	1.8	0.0	0.0	0.0
Q2	218	22.4	26.1	8.9	77.6	73.7	61.9	60.0	31.4	40.9	13.8	2.6	0.0	0.0	0.0
Q3	293	18.3	42.7	8.1	82.2	82.2	82.2	79.3	68.3	48.8	21.6	4.7	0.0	0.0	0.0
Q4	341	24.7	58.4	7.3	91.9	90.2	89.1	92.6	75.7	66.6	10.6	8.2	0.9	0.9	4.5
Q5(richest)	261	19.3	74.5	7.2	90.9	90.9	90.3	91.6	90.9	75.7	11.5	6.4	18.4	7.5	0.0
Missing	7														
Total	1,295	20.0	49.4	3.9	85.3	83.7	80.7	81.0	64.7	58.3	15.2	5.2	5.0	2.5	2.1

M = % Missing of Covered SE= Standard Error of %Covered

Antenatal Care Indicators:

Total = Number of female respondents of reproductive age (18-49 years old)

"Birth in Last 5 Years" = % of female respondents of reproductive age indicating having had a live birth in the last 5 years.

"Cov" = % of female respondents of reproductive age with live birth in the last 5 years who indicated having been seen at least 3 times or more by health care professional, received blood pressure, blood sample taken, and told signs about complications for their last pregnancy (aggregate antenatal care indicator).

"Visit 1x" "Visit 2x" "Visit 3x" = % of female respondents of reproductive age with live birth in the last 5 years who indicated having been seen at least once, twice or three times or more respectively by a health care professional during their last pregnancy.

"Blood pressure checked" = % of female respondents of reproductive age with live birth in the last 5 years who had blood pressure taken when they saw health care professional during their last pregnancy.

"Blood sample taken" = % of female respondents of reproductive age with live birth in the last 5 years who had a blood sample taken when they saw health care professional during their last pregnancy.

"Told Signs of Pregnancy Complications" = % of female respondents of reproductive age with live birth in the last 5 years who had been told signs of pregnancy complications when they saw health care professional during their last pregnancy.

Maternal to Child HIV Transmission Indicators:

"Birth in last 2 years" = % of female respondents of reproductive age indicating having had a live birth in the last 2 years.

"Cov" = % of female respondents of reproductive age with live birth in the last 2 years who indicated having been counseled and tested and given results for HIV during their last pregnancy.

**\*\*Visit 1x** maybe less than blood pressure, blood sample, etc. because answer for number of times for ANC visits might have been missing.

## 5.04 Birth Delivery Care

	Women 18-49	Delivery Care				Place of Delivery						
		Need	Coverage	SE	M	Public Health Facility	SE	Private Health Facility	SE	Home	SE	M
Residence												
Urban	366	18.2	87.9	4.8	11.6	72.9	5.2	8.9	3.8	0.5	0.5	17.7
Rural	930	20.7	84.6	2.9	13.2	74.7	7.9	2.4	1.6	9.7	6.4	13.1
Missing												
Income_Quintile												
Q1(poorest)	174	12.3	65.7	11.5	25.6	46.4	11.1	9.4	7.7	18.6	5.6	25.6
Q2	218	22.4	80.9	4.8	16.7	45.8	18.6	10.0	5.9	27.5	15.5	16.7
Q3	293	18.3	84.4	5.1	13.3	77.7	6.7	6.8	6.6	2.2	2.2	13.3
Q4	341	24.7	91.8	3.1	8.2	91.3	3.3	0.0	0.0	0.0	0.0	8.7
Q5(richest)	261	19.3	89.0	4.0	10.3	82.1	6.3	0.0	0.0	0.7	0.7	17.3
Missing	7											
Total	1,295	20.0	85.4	2.6	12.8	74.2	6.0	4.1	1.6	7.4	4.9	14.3

M = % Missing of Covered SE= Standard Error of % Covered Birth Delivery Care Indicators:

Total = Number of female respondents of reproductive age (18-49 years old)

"Birth in Last 5 Years" = % of female respondents of reproductive age indicating having had a live birth in the last 5 years.

"Coverage" = % of female respondents of reproductive age with live birth in the last 5 years who indicated having received assistance with birth delivery from a health care professional (doctor, nurse or midwife) during their last birth.

"Public Health Facility" = % of female respondents of reproductive age with live birth in the last 5 years who indicated having their last birth delivered in a public health facility.

"Private Health Facility" = % of female respondents of reproductive age with live birth in the last 5 years who indicated having their last birth delivered in a private health facility.

"Home" = % of female respondents of reproductive age with live birth in the last 5 years who indicated having their last birth delivered home or in the field (etc.)

## 5.05 Child's Health - Common Illness

	Total Children under Age of 5	Fever	More liquid	SE	Same or more food	SE	M	Cough	More liquid	SE	Same or more food	SE	M	Diarrhea	More liquid	SE	Same or more food	SE	M
<b>Sex</b>																			
Females	289	32.2	15.3	5.4	36.5	6.1	0.0	36.3	8.3	3.4	47.2	32.2	0.0	11.4	18.2	13.9	35.2	12.5	0.0
Males	413	38.9	7.6	2.6	29.9	4.1	0.0	49.2	5.3	2.0	45.3	38.9	0.0	13.2	7.5	4.1	32.9	9.9	0.0
Missing	0																		
<b>Residence</b>																			
Urban	149	23.9	27.2	11.5	38.6	8.9	0.0	28.3	14.1	3.7	55.8	23.9	0.0	8.2	24.8	10.0	34.7	6.8	0.0
Rural	552	39.5	7.6	2.5	31.3	4.3	0.0	48.1	5.1	2.2	44.4	39.5	0.0	13.6	9.4	7.5	33.6	10.9	0.0
Missing																			
<b>Income_Quintile</b>																			
Q1(poorest)	74	49.0	18.4	6.5	35.0	9.3	0.0	48.8	16.1	6.8	38.8	49.0	0.0	18.0	15.5	15.0	14.6	12.1	0.0
Q2	110	42.5	12.1	6.3	30.8	5.5	0.0	50.3	9.2	5.3	37.1	42.5	0.0	16.8	5.7	6.8	47.6	23.9	0.0
Q3	134	37.5	6.4	4.3	23.4	14.2	0.0	47.8	2.9	2.1	42.4	37.5	0.0	15.6	22.0	14.9	19.5	10.2	0.0
Q4	209	30.8	6.9	4.2	28.6	8.5	0.0	36.0	7.7	3.5	53.1	30.8	0.0	9.6	0.5	0.5	14.9	6.6	0.0
Q5(richest)	172	32.6	11.4	6.6	44.1	7.9	0.0	45.0	1.2	0.4	51.6	32.6	0.0	8.4	15.8	18.1	80.6	20.0	0.0
Missing	2																		
Total	701	36.1	10.4	2.9	32.3	3.9	0.0	43.9	6.3	2.0	45.9	36.1	0.0	12.4	11.6	6.9	33.7	9.4	0.0

**M = % Missing of Covered      SE= Standard Error of % Covered**

**Child's Common Illness Indicators:**

**Total = Number of children under the age of 5 years at the time of the interview.**

**"Fever"/"Cough"/"Diarrhea" = % of children under the age of 5 with reported episode of (cough, fever, or diarrhea) in the last 3 months.**

**"More Liquid" = % of children under 5 with either fever, cough, or diarrhea in the last 3 months, that were given more liquids to drink during their illness.**

**"Same or More Food" = % of children under 5 with either fever, cough, or diarrhea in the last 3 months, that were given the same amount or more food to eat during their illness.**

## 5.06 Child's Health - Danger Signs

	Children under 5	Fast Breath	Seeking Treatment						Vomit	Seeking Treatment						No Drink or Eat	Seeking Treatment					
			Yes	SE	Public	Private	Trad	M		Yes	SE	Public	Private	Trad	M		Yes	SE	Public	Private	Trad	M
Sex																						
Females	289	0.0	100.0	0.0	72.6	27.4	0.0	0.0	5.0	84.9	5.4	25.9	74.1	0.0	0.0	1.3	0.0	0.0	35.6	64.4	0.0	0.0
Males	413	0.0	67.7	12.5	91.0	9.0	0.0	0.0	4.3	100.0	0.0	98.4	1.6	0.0	0.0	2.4	0.0	0.0	100.0	0.0	0.0	0.0
Missing	0																					
Residence																						
Urban	149	0.1	67.7	20.5	100.0	0.0	0.0	0.0	4.1	95.6	4.8	95.1	4.9	0.0	0.0	3.5	0.0	0.0	100.0	0.0	0.0	0.0
Rural	552	0.0	88.7	10.7	72.4	27.6	0.0	0.0	4.7	92.6	4.3	62.2	37.8	0.0	0.0	1.5	0.0	0.0	70.9	29.1	0.0	0.0
Missing																						
Income_Quintile																						
Q1(poorest)	74	0.1	64.9	30.2	14.3	85.7	0.0	0.0	10.7	75.8	13.1	11.7	88.3	0.0	0.0	3.3	0.0	0.0	0.0	100.0	0.0	0.0
Q2	110	0.0	100.0	0.0	100.0	0.0	0.0	0.0	5.8	100.0	0.0	40.4	59.6	0.0	0.0	1.6	0.0	0.0	100.0	0.0	0.0	0.0
Q3	134	0.0	100.0	0.0	79.1	20.9	0.0	0.0	5.3	100.0	0.0	100.0	0.0	0.0	0.0	3.9	0.0	0.0	100.0	0.0	0.0	0.0
Q4	209	0.0	100.0	0.0	100.0	0.0	0.0	0.0	4.2	100.0	0.0	96.7	3.3	0.0	0.0	1.8	0.0	0.0	100.0	0.0	0.0	0.0
Q5(richest)	172	0.0	54.2	34.4	100.0	0.0	0.0	0.0	1.1	85.7	13.2	100.0	0.0	0.0	0.0	0.2	0.0	0.0	100.0	0.0	0.0	0.0
Missing	2																					
Total	701	0.0	79.8	12.1	82.4	17.6	0.0	0.0	4.6	93.2	3.8	68.6	31.4	0.0	0.0	1.9	0.0	0.0	82.1	17.9	0.0	0.0

**M = % Missing of those Seeking Treatment      SE= Standard Error of % Seeking Treatment**

**Child Danger Signs Indicators:**

**Total = Number of children under the age of 5 years at the time of the interview.**

**"Fast Breathing"/"Vomiting"/"No Drink or Eat" = % of children under the age of 5 with reported episodes of (fast breathing, vomiting, or no eating or drinking) in the last 3 months.**

**"Seeking Treatment" = % of children under 5 with episodes of fast breathing, vomiting, or no eating or drinking in the last 3 months that were taken for care/treatment at either a private health facility, public health facility, or traditional healer (other).**

**Note: large number of missings are usually due to not having information type of facility (either a no answer or a don't know answer).**

## 5.07 Vaccinations Meeting WHO Timeline Recommendations for Children 12 to 23 months of Age with Vaccination Card

	Children 12-23 months with card	DPT 3 Immunization			Measles		
		%Cov	SE	M	%Cov	SE	M
Sex							
Females	35	97.4	2.1	0.0	79.0	7.6	0.0
Males	47	61.0	10.9	0.0	55.6	13.1	0.0
Missing	0						
Residence							
Urban	20	92.0	6.1	0.0	85.4	7.2	0.0
Rural	61	71.3	11.1	0.0	59.0	14.1	0.0
Missing	0						
Income Quintile							
Q1(poorest)	8	77.2	15.0	0.0	68.8	15.6	0.0
Q2	12	95.7	5.2	0.0	91.6	7.8	0.0
Q3	22	56.6	22.5	0.0	36.4	13.0	0.0
Q4	8	100.0	0.0	0.0	100.0	0.0	0.0
Q5(richest)	30	76.3	21.7	0.0	65.5	16.4	0.0
Missing	1						
Total	81	76.5	8.8	0.0	65.6	11.3	0.0

M = % Missing of Covered      SE= Standard Error of % Covered

Vaccinations Meeting WHO Timeline for Children 12 - 23 months Indicators:

Total = Children 12 - 23 months with a vaccination card seen by the interviewer (does not include children less than 12 months to account for censored observations).

"DPT 3" = % of children 12 - 23 months with a vaccination card seen by the interviewer who received 3 inoculations of DTP not sooner than 6, 10 and 14 weeks respectively and before 12 months of age, and that was verified by the interviewer as being recorded on the card.

"Measles" = % of children 12 - 23 months with a vaccination card seen by the interviewer who received who received 1 inoculation of measles not sooner than 8 months of age and before 12 months of age.



## 5.08 Vaccination Status of Children 12-23 Months

	Children 12-23 months	Card seen			DPT 3 Immunization							Measles						
		Seen	SE	M	Total		Card		No Card		M	Total		Card		No Card		M
					%Cov	SE	%Cov	SE	%Cov	SE		%Cov	SE	%Cov	SE			
Sex																		
Females	63	49.6	11.7	1.1	63.6	9.9	78.0	10.3	22.0	10.3	32.4	72.6	5.4	62.4	11.2	37.6	11.2	15.9
Males	86	55.1	13.0	7.5	59.4	14.2	84.2	8.4	15.8	8.4	20.4	72.4	10.9	76.2	10.4	23.0	10.2	14.6
Missing	0																	
Residence																		
Urban	31	60.5	11.6	4.6	88.9	5.0	68.1	14.2	31.9	14.2	4.0	92.5	5.4	65.4	14.2	34.6	14.2	0.0
Rural	117	50.7	12.2	4.9	53.8	12.4	87.4	7.4	12.6	7.4	31.2	67.1	9.5	72.1	10.0	27.2	9.8	19.2
Missing	0																	
Income_Quintile																		
Q1(poorest)	21	31.3	12.6	6.7	31.3	12.6	100.0	0.0	0.0	0.0	54.5	61.0	7.2	51.3	15.4	48.7	15.4	28.2
Q2	22	51.5	13.3	2.3	59.6	12.8	86.4	12.6	13.6	12.6	14.5	68.4	9.4	75.3	16.3	21.4	13.8	3.4
Q3	26	43.1	9.6	20.2	30.0	14.6	88.4	11.5	11.6	11.5	27.3	47.7	10.0	90.4	7.5	9.6	7.5	27.3
Q4	34	39.7	19.0	0.0	64.8	15.9	61.2	17.7	38.8	17.7	35.2	80.1	10.6	49.5	20.2	50.5	20.2	19.9
Q5(richest)	43	79.6	8.1	0.0	92.3	4.2	86.3	8.1	13.7	8.1	7.3	89.4	7.7	82.1	8.5	17.9	8.5	4.4
Missing	2																	
Total	148	52.8	9.9	4.8	61.2	10.5	81.5	7.5	18.5	7.5	25.5	72.4	8.1	70.3	8.5	29.2	8.3	15.1

**M = % Missing (% without adequate information to estimate Total DPT3 or Measles Coverage)**

**SE= Standard Error of % Total, DPT3 or Measles Coverage**

**Explanation of Indicators for Vaccination Status of Children 12 - 23 Months:**

**"Card Seen" = % of children 12 - 23 months of age who had a vaccination card seen by the interviewer.**

**"DPT 3 Immunization": does not account for WHO timeline recommendations.**

**"Total" = % of all children 12 - 23 months of age with DPT3 vaccination either verified by card or by recall of respondent.**

**"Card" = % of all DPT3 vaccinations among children 12-23 months that were verified by card only.**

**"No Card" = % of all DPT3 vaccinations among children 12-23 months that were based on recall of the respondent only.**

**"Measles": does not account for WHO timeline recommendations.**

**"Total" = % of all children 12 - 23 months of age with measles vaccination either verified by card or by recall of respondent.**

**"Card" = % of all Measles vaccinations among children 12-23 months that were verified by card only.**

**"No Card" = % of all Measles vaccinations among children 12-23 months that were based on recall of the respondent only.**

## 5.09 Women's Cancer Screening

	Total Females	Percent Females 18+	PAP Smear	SE	M	Percent Females 40+	Mammography / Breast Exam	SE	M
<b>Residence</b>									
Urban	639	87.8	21.5	3.3	13.6	49.2	16.4	3.3	12.0
Rural	1,397	93.3	14.8	3.4	9.7	47.7	20.6	7.5	9.5
Missing	0								
<b>Income_Quintile</b>									
Q1(poorest)	284	87.3	3.1	1.1	10.1	47.2	0.2	0.2	3.0
Q2	347	88.0	5.6	2.4	9.3	47.4	12.0	5.0	6.7
Q3	455	90.6	16.5	5.4	13.0	48.8	22.6	7.9	11.3
Q4	556	93.9	20.4	3.0	9.3	48.7	18.5	5.2	10.6
Q5(richest)	383	96.4	30.1	3.1	12.9	48.9	35.9	10.4	17.0
Missing	11								
<b>Age</b>									
18-29	409	20.1	20.5	4.7	5.7				
30-39	474	23.3	23.3	4.5	7.9				
40-49	412	20.2	13.3	2.5	11.7	20.2	25.4	5.3	6.4
50-59	375	18.4	14.5	2.6	15.5	18.4	18.0	6.7	12.3
60-69	194	9.5	4.8	1.7	18.6	9.5	8.7	2.3	14.5
70+	171	8.4		0.0		8.4		0.0	
Missing	0								
Total	2,036	91.6	16.8	2.6	10.9	48.2	19.2	5.2	10.3

M = % Missing of those with Pap Smear/Mammography SE= Standard Error of % with Pap Smear/Mammography

\*\*\*Note: Values in the age row under the "Females 18 plus" and "Females 40 plus" columns are column percent values.

**Women's Cancer Screening Indicators:**

"Papsmear need"= % of all female respondents aged 18-69

"Papsmear" coverage = % of those female respondents aged 18-69 who self-reported receiving a pap smear test during pelvic examination in the last 3 years.

"Mammography need" = % of all female respondents aged 40-69

"Mammography" coverage = % of those female respondents aged 40-69 who self-reported receiving a mammography test or breast examination in the last 3 years.

\*\*\*\*In several countries women above age 69 were asked the cancer screening questions, and for this reason they are included in the table. For countries that did not ask this questions of women above age 69, these values are expected to be missing.

## 5.10 Oral Health and Injuries

	Oral Health Problems					Road Traffic Accidents				Injury			
	Total	Need	Coverage	SE	M	Need	Coverage	SE	M	Need	Coverage	SE	M
<b>Sex</b>													
Female	2,036	22.8	45.7	3.1	0.1	0.8	63.5	21.4	0.0	1.0	29.5	10.2	0.0
Male	1,957	22.5	47.0	2.7	0.5	1.7	73.9	13.3	0.0	1.9	34.5	16.3	0.0
Missing	0												
<b>Residence</b>													
Urban	1,229	20.7	55.2	4.0	1.1	0.4	72.4	20.5	0.0	0.7	33.5	24.9	0.0
Rural	2,764	23.6	42.9	2.8	0.0	1.6	70.1	14.6	0.0	1.8	32.6	13.5	0.0
Missing	0												
<b>Income_Quintile</b>													
Q1(poorest)	566	28.9	38.4	5.9	0.0	1.1	100.0	0.0	0.0	4.0	17.5	12.6	0.0
Q2	732	21.1	32.1	4.4	0.0	1.5	63.7	24.7	0.0	1.0	72.5	22.0	0.0
Q3	893	21.5	41.3	4.6	0.7	1.2	92.0	7.5	0.0	1.2	63.3	23.5	0.0
Q4	1,008	21.1	50.3	3.2	0.6	1.2	78.2	10.8	0.0	1.0	30.7	17.8	0.0
Q5(richest)	775	22.8	66.6	5.6	0.0	1.3	27.4	22.4	0.0	1.0	1.9	2.5	0.0
Missing	19												
<b>Age</b>													
18-29	732	10.3	69.0	10.3	0.0	2.5	59.2	36.3	0.0	1.5	28.5	24.8	0.0
30-44	1,286	18.0	46.6	5.2	0.0	1.1	80.7	4.9	0.0	1.8	40.6	22.3	0.0
45-59	1,212	27.3	45.1	3.0	0.0	0.7	99.0	1.2	0.0	1.2	31.8	15.0	0.0
60-69	422	33.2	38.7	5.6	0.6	0.7	0.0	0.0	0.0	0.5	0.0	0.0	0.0
70-79	265	39.3	44.3	4.7	1.9	2.1	68.1	27.8	0.0	1.8	42.5	32.5	0.0
80+	76	29.1	41.5	8.1	0.0	0.5	100.0	0.0	0.0	4.1	0.0	0.0	0.0
Missing	0												
Total	3,993	22.7	46.3	2.5	0.3	1.2	70.3	13.4		1.5	32.7	12.0	

M = % Missing of % Covered      SE= Standard Error of % Covered

### Indicators:

#### Oral Health:

"Need" = % of all respondents indicating any problems in the last 12 months with their mouth and/or teeth.

"Coverage" = % of respondents reporting problems with their mouth and teeth who indicated receiving dental or medical care in last 12 months.

#### Road Traffic Accident:

"Need" = % of all respondents indicating having suffered bodily injury from a road traffic accident in last 12 months.

"Coverage" = % of respondents reporting having suffered bodily injury from a road traffic accident in last 12 months who indicating having received treatment for their injuries on-site or at health facility within 1 hour of accident .

#### Injuries from Non-traffic Accidents:

"Need" = % of all respondents indicating having suffered bodily injury due to non-traffic accidents in last 12 months.

"Coverage" = % of respondents reporting having suffered bodily injury due to non-traffic accidents in last 12 months who indicating having received treatment for injuries on-site or at health facility within 1 hour of accident

## 5.11 Self Reported Non-Communicable Conditions

	Total	Angina				Osteo-Arthritis				Asthma				Diabetes			
		Need	Coverage	SE	M	Need	Coverage	SE	M	Need	Coverage	SE	M	Need	Coverage	SE	M
Sex																	
Female	2,036	2.5	49.9	11.7	0.0	17.6	24.6	5.7	0.3	1.7	33.6	9.9	0.0	1.4	81.3	6.9	0.0
Male	1,957	1.7	53.7	13.9	0.0	12.2	31.0	2.8	0.7	2.5	45.9	7.4	2.0	1.2	88.1	7.1	0.0
Missing	0																
Residence																	
Urban	1,229	3.5	57.6	15.8	0.0	14.3	35.6	3.4	1.5	2.8	45.1	11.6	0.0	2.6	77.8	5.5	0.0
Rural	2,764	1.5	44.8	11.1	0.0	15.3	23.7	4.8	0.0	1.8	37.8	9.3	2.0	0.7	95.7	4.4	0.0
Missing	0																
Income_Quintile																	
Q1(poorest)	566	2.7	30.2	18.5	0.0	19.7	34.6	8.5	0.0	5.1	29.2	11.2	3.4	0.3	57.1	17.3	0.0
Q2	732	2.5	59.0	15.2	0.0	17.2	24.0	5.9	0.0	2.7	51.7	13.0	0.0	1.0	93.4	6.8	0.0
Q3	893	1.9	41.5	16.0	0.0	15.5	25.5	6.1	1.2	1.8	41.5	14.9	0.0	0.7	87.3	9.3	0.0
Q4	1,008	2.5	56.8	18.2	0.0	14.1	18.9	5.5	0.7	1.3	53.4	20.7	0.0	2.0	78.8	7.7	0.0
Q5(richest)	775	1.0	74.9	13.6	0.0	10.1	39.2	6.2	0.0	0.7	33.7	26.0	0.0	2.0	89.4	10.1	0.0
Missing	19																
Age																	
18-29	732	0.0	0.0	0.0	0.0	1.7	5.7	3.9	0.0	0.6	6.7	7.3	0.0	0.2	100.0	0.0	0.0
30-44	1,286	1.1	48.6	12.3	0.0	11.1	22.8	4.0	0.0	0.9	17.5	7.3	0.0	0.3	39.9	25.1	0.0
45-59	1,212	2.1	60.4	13.2	0.0	18.8	28.8	5.0	0.0	1.6	21.8	15.3	0.0	1.6	93.7	3.0	0.0
60-69	422	4.8	35.9	14.6	0.0	27.0	30.2	5.8	1.3	5.5	69.9	12.4	4.3	4.7	86.7	8.0	0.0
70-79	265	6.4	60.2	17.2	0.0	31.1	31.5	9.5	1.4	7.5	39.1	15.5	0.0	2.1	81.6	15.1	0.0
80+	76	7.6	49.2	31.9	0.0	26.3	19.0	7.7	0.0	7.1	69.4	27.2	0.0	1.6	36.8	4.1	0.0
Missing	0																
Total	3,993	2.1	51.4	9.5	0.0	15.0	27.2	4.0	0.4	2.1	40.8	7.3	1.2	1.3	84.4	4.6	0.0

**M = % Missing for Covered**

**SE= Standard Error of %Covered**

**Self Reported Non-Communicable Conditions Indicators:**

"Need" = % of total respondents indicating having received a diagnosis of the condition (angina, arthritis, asthma, diabetes) in last 12 months.

"Coverage" = % of respondents with a self-reported condition (angina, arthritis, asthma, diabetes) indicating they have received treatment or screening for the condition in the last 2 weeks.

## 5.12 Mental Health Conditions

	Total	Depression				Schizophrenia			
		Need	Coverage	SE	M	Need	Coverage	SE	M
Sex									
Female	2,036	0.4	48.7	10.2	0.0	0.4	4.9	5.7	0.0
Male	1,957	0.2	29.0	30.2	0.0	0.3	0.0	0.0	0.0
Missing	0								
Residence									
Urban	1,229	0.4	45.1	6.3	0.0	0.2	0.0	0.0	0.0
Rural	2,764	0.2	41.7	21.1	0.0	0.4	3.5	3.9	0.0
Missing	0								
Income Quintile									
Q1(poorest)	566	0.6	38.5	18.2	0.0	1.0	6.9	8.2	0.0
Q2	732	0.3	0.0	0.0	0.0	0.5	0.0	0.0	0.0
Q3	893	0.3	45.2	35.0	0.0	0.1	0.0	0.0	0.0
Q4	1,008	0.3	82.1	20.8	0.0	0.1	0.0	0.0	0.0
Q5(richest)	775	0.0		0.0		0.1	0.0	0.0	0.0
Missing	19								
Age									
18-29	732	0.0	0.0	0.0	0.0	0.0		0.0	
30-44	1,286	0.3	70.9	23.1	0.0	0.2	0.0	0.0	0.0
45-59	1,212	0.4	16.7	19.4	0.0	0.4	0.0	0.0	0.0
60-69	422	0.5	84.4	16.8	0.0	1.0	9.5	9.9	0.0
70-79	265	0.3	0.0	0.0	0.0	0.2	0.0	0.0	0.0
80+	76	0.3	0.0	0.0	0.0	1.1	0.0	0.0	0.0
Missing	0								
Total	3,993	0.3	43.2	12.1	0.0	0.3	3.0		0.0

**M = % Missing for Covered**

**SE= Standard Error of %Covered**

**Mental Health Conditions Indicators:**

"Need" = % of total respondents indicating having received a diagnosis of the condition (depression, schizophrenia) in last 12 months.

"Coverage" = % of respondents with a self-reported condition (depression, schizophrenia) indicating they have received treatment or screening for the condition in the last 2 weeks.

## 5.13 Cataracts

	Total 60+	Cataracts			
		Need	Coverage	SE	M
Sex					
Female	365	8.2	28.9	5.4	0.0
Male	398	6.8	33.3	6.6	0.0
Missing	0				
Residence					
Urban	342	10.8	23.3	2.4	0.0
Rural	421	4.7	45.4	8.4	0.0
Missing	0				
Income_Quintile					
Q1(poorest)	136	6.9	19.5	12.1	0.0
Q2	175	5.5	59.2	21.3	0.0
Q3	196	8.6	43.2	12.4	0.0
Q4	150	7.6	10.3	9.5	0.0
Q5(richest)	101	9.5	16.6	7.9	0.0
Missing	6				
Age					
60-69	422	3.9	3.3	2.2	0.0
70-79	265	11.1	44.5	6.1	0.0
80+	76	14.6	35.9	13.9	0.0
Missing	0				
Total	763	7.5	31.0	3.3	0.0

**M = % Missing of Covered    SE= Standard Error of %Covered**

**Cataracts Indicators:**

**Total = Number of respondents 60 years of age or more.**

**"Need" = % in need (respondents 60 years of age or more with self-reported diagnosis of cataracts in the last 5 years).**

**"Coverage" = % respondents 60 years of age or more with self-reported diagnosis of cataracts having indicated receiving eye surgery to remove cataracts in the last 5 years)**

**6.01 In general, rate your health today - q2000**

	Very Good	SE	Good	SE	Moderate	SE	Bad	SE	Very Bad	SE	Missing	SE	N
<b>Gender</b>													
Male	24.8	2.2	41.5	2.6	27.5	1.8	5.5	1.1	0.7	0.2	0.0	0.0	1,957
Female	18.7	1.9	39.1	2.0	33.7	2.0	7.9	0.9	0.7	0.3	0.0	0.0	2,036
M	0.0	0.0	0.0	0.0	0.0	0.0	0.0	0.0	0.0	0.0	0.0	0.0	
<b>Residence</b>													
Urban	23.7	4.6	36.0	3.0	33.8	2.9	5.9	0.6	0.6	0.2	0.0	0.0	1,229
Rural	20.8	2.0	42.1	2.3	29.3	1.4	7.1	1.0	0.7	0.3	0.0	0.0	2,764
M	0.0	0.0	0.0	0.0	0.0	0.0	0.0	0.0	0.0	0.0	0.0	0.0	
<b>Income</b>													
Q1(poorest)	15.8	3.1	31.3	3.1	38.6	3.5	12.8	1.4	1.5	0.9	0.0	0.0	566
Q2	20.9	3.3	38.0	3.0	28.9	2.5	10.9	2.6	1.3	0.5	0.0	0.0	732
Q3	22.3	3.0	42.2	3.3	28.7	2.6	6.7	1.3	0.1	0.1	0.0	0.0	893
Q4	21.7	3.2	42.9	3.6	30.4	3.0	4.4	0.8	0.6	0.4	0.0	0.0	1,008
Q5(richest)	26.0	1.4	43.5	2.7	28.9	2.8	1.4	0.6	0.2	0.1	0.0	0.0	775
M	20.5	9.0	24.4	10.4	46.6	10.7	8.5	3.4	0.0	0.0	0.0	0.0	19
<b>Age</b>													
18-29	41.0	4.6	44.3	3.8	13.8	4.1	0.9	0.6	0.0	0.0	0.0	0.0	732
30-44	24.5	3.0	44.7	2.5	25.9	2.7	4.4	1.1	0.5	0.3	0.0	0.0	1,286
45-59	16.0	1.6	42.2	3.0	34.0	1.2	7.4	1.7	0.4	0.2	0.0	0.0	1,212
60-69	9.3	1.9	27.7	2.8	49.0	3.0	12.2	2.3	1.7	0.8	0.0	0.0	422
70-79	6.1	2.1	24.6	3.2	48.0	3.6	19.0	3.4	2.2	1.8	0.0	0.0	265
80+	0.9	0.7	19.3	5.9	58.8	6.8	18.3	4.5	2.6	1.4	0.0	0.0	76
M	0.0	0.0	0.0	0.0	0.0	0.0	0.0	0.0	0.0	0.0	0.0	0.0	
All	21.7	2.0	40.3	1.8	30.7	1.3	6.7	0.7	0.7	0.2			3,993



## 6.02 Difficulty with 'work and household activities' in last 30 days - q2001

	None	SE	Mild	SE	Moderate	SE	Sever	SE	Extreme/ Cannot do	SE	Missing	SE	N
<b>Gender</b>													
Male	73.6	2.5	17.0	1.9	6.9	0.8	2.2	0.5	0.3	0.2	0.0	0.0	1,957
Female	68.9	2.2	20.0	1.9	8.3	1.0	1.8	0.4	0.8	0.1	0.1	0.1	2,036
M	0.0	0.0	0.0	0.0	0.0	0.0	0.0	0.0	0.0	0.0	0.0	0.0	
<b>Residence</b>													
Urban	65.6	3.8	21.5	3.6	10.0	1.1	2.3	0.4	0.4	0.1	0.2	0.1	1,229
Rural	73.8	2.4	17.2	2.0	6.5	0.9	1.9	0.4	0.6	0.1	0.0	0.0	2,764
M	0.0	0.0	0.0	0.0	0.0	0.0	0.0	0.0	0.0	0.0	0.0	0.0	
<b>Income</b>													
Q1(poorest)	55.6	4.0	24.5	3.1	15.2	1.8	4.0	0.8	0.7	0.4	0.0	0.0	566
Q2	63.8	2.1	23.0	2.3	9.3	1.3	3.2	0.9	0.6	0.4	0.0	0.0	732
Q3	71.3	3.7	19.1	3.1	7.3	1.8	2.0	0.6	0.1	0.1	0.1	0.1	893
Q4	76.9	3.7	15.7	2.9	5.1	1.1	1.0	0.5	1.2	0.4	0.2	0.2	1,008
Q5(richest)	82.6	2.9	12.7	3.0	3.8	1.1	0.7	0.3	0.1	0.1	0.0	0.0	775
M	53.8	9.6	28.7	11.2	12.3	6.4	5.2	3.6	0.0	0.0	0.0	0.0	19
<b>Age</b>													
18-29	88.4	2.0	8.5	2.1	3.1	0.9	0.0	0.0	0.0	0.0	0.0	0.0	732
30-44	77.9	2.9	14.9	2.5	5.9	0.9	0.7	0.2	0.5	0.2	0.0	0.0	1,286
45-59	71.4	2.5	19.3	1.7	6.6	1.4	2.4	0.6	0.3	0.2	0.1	0.1	1,212
60-69	54.0	4.6	31.2	5.0	11.2	1.5	3.0	0.9	0.6	0.4	0.0	0.0	422
70-79	31.0	4.4	40.3	4.5	19.4	3.0	7.4	2.4	1.9	1.4	0.0	0.0	265
80+	26.8	4.7	19.7	4.3	33.4	6.0	12.9	3.8	7.3	3.4	0.0	0.0	76
M	0.0	0.0	0.0	0.0	0.0	0.0	0.0	0.0	0.0	0.0	0.0	0.0	
All	71.2	2.1	18.5	1.8	7.6	0.7	2.0	0.3	0.6	0.1	0.1	0.0	3,993

## 6.03 Difficulty with 'moving around' in last 30 days - q2010

	None	SE	Mild	SE	Moderate	SE	Sever	SE	Extreme/ Cannot do	SE	Missing	SE	N
<b>Gender</b>													
Male	86.4	1.7	8.7	1.4	3.9	0.7	0.9	0.3	0.1	0.1	0.0	0.0	1,957
Female	82.0	1.2	12.4	1.1	3.8	0.7	1.1	0.3	0.6	0.2	0.0	0.0	2,036
M	0.0	0.0	0.0	0.0	0.0	0.0	0.0	0.0	0.0	0.0	0.0	0.0	
<b>Residence</b>													
Urban	78.5	2.6	14.2	2.0	5.8	1.4	1.0	0.1	0.4	0.1	0.1	0.1	1,229
Rural	86.7	1.4	9.0	1.1	3.0	0.7	0.9	0.2	0.4	0.2	0.0	0.0	2,764
M	0.0	0.0	0.0	0.0	0.0	0.0	0.0	0.0	0.0	0.0	0.0	0.0	
<b>Income</b>													
Q1(poorest)	75.0	3.4	14.2	1.8	8.0	1.4	2.5	0.8	0.2	0.1	0.1	0.1	566
Q2	78.5	2.2	16.0	2.2	3.9	0.8	1.7	0.6	0.0	0.0	0.0	0.0	732
Q3	85.2	2.9	8.9	1.6	4.6	1.5	1.1	0.3	0.1	0.1	0.0	0.0	893
Q4	86.1	2.6	10.1	2.1	2.5	0.8	0.2	0.1	1.2	0.4	0.0	0.0	1,008
Q5(richest)	92.8	2.0	5.4	1.6	1.7	0.6	0.0	0.0	0.1	0.1	0.0	0.0	775
M	70.0	11.0	19.5	11.1	8.4	4.0	2.1	2.1	0.0	0.0	0.0	0.0	19
<b>Age</b>													
18-29	97.1	0.9	2.1	0.7	0.8	0.6	0.0	0.0	0.0	0.0	0.0	0.0	732
30-44	91.9	1.0	6.5	1.0	1.2	0.2	0.1	0.1	0.3	0.3	0.0	0.0	1,286
45-59	84.8	2.5	10.0	1.6	4.2	1.2	0.8	0.3	0.2	0.1	0.0	0.0	1,212
60-69	69.3	3.3	21.9	3.4	6.5	0.8	1.8	1.0	0.5	0.3	0.0	0.0	422
70-79	47.6	5.0	31.9	2.7	15.7	4.7	2.9	0.7	1.7	1.4	0.3	0.3	265
80+	27.6	6.4	35.6	7.6	18.7	4.5	14.9	8.6	3.1	1.5	0.0	0.0	76
M	0.0	0.0	0.0	0.0	0.0	0.0	0.0	0.0	0.0	0.0	0.0	0.0	
All	84.2	1.4	10.6	1.1	3.9	0.6	1.0	0.1	0.4	0.1	0.0	0.0	3,993

## 6.04 Difficulty with 'vigorous activities' in last 30 days - q2011

	None	SE	Mild	SE	Moderate	SE	Sever	SE	Extreme/ Cannot do	SE	Missing	SE	N
<b>Gender</b>													
Male	64.3	3.2	18.3	2.2	10.3	1.4	4.7	0.7	2.4	0.5	0.0	0.0	1,957
Female	51.5	4.0	22.5	1.9	15.3	2.1	7.6	0.9	3.0	0.6	0.1	0.0	2,036
M	0.0	0.0	0.0	0.0	0.0	0.0	0.0	0.0	0.0	0.0	0.0	0.0	
<b>Residence</b>													
Urban	52.8	5.0	20.7	2.8	15.6	1.7	7.4	1.0	3.4	0.4	0.1	0.1	1,229
Rural	60.0	4.5	20.3	2.2	11.6	1.8	5.7	0.8	2.4	0.5	0.0	0.0	2,764
M	0.0	0.0	0.0	0.0	0.0	0.0	0.0	0.0	0.0	0.0	0.0	0.0	
<b>Income</b>													
Q1(poorest)	42.8	4.7	26.5	1.8	16.8	3.3	9.9	1.3	4.0	0.9	0.0	0.0	566
Q2	51.3	2.8	22.4	2.5	12.6	1.5	9.9	1.4	3.7	1.2	0.0	0.0	732
Q3	61.9	3.9	16.2	1.8	13.2	1.9	5.7	1.0	2.9	0.6	0.0	0.0	893
Q4	60.7	4.7	20.1	3.4	12.8	1.6	4.0	0.8	2.4	0.5	0.1	0.1	1,008
Q5(richest)	66.6	5.2	19.3	2.6	9.9	2.4	3.4	1.2	0.8	0.4	0.0	0.0	775
M	49.6	9.7	21.9	11.1	12.1	6.0	8.9	3.6	6.2	6.0	1.3	1.4	19
<b>Age</b>													
18-29	79.2	3.5	15.1	2.7	4.3	1.1	1.4	0.7	0.0	0.0	0.0	0.0	732
30-44	71.2	2.9	18.7	2.1	6.9	1.0	2.5	0.9	0.6	0.3	0.0	0.0	1,286
45-59	53.6	4.3	25.3	3.4	14.7	1.8	5.1	1.3	1.2	0.4	0.0	0.0	1,212
60-69	29.1	2.9	25.5	3.2	26.5	3.1	14.9	2.6	3.9	0.8	0.1	0.1	422
70-79	13.4	3.6	15.5	2.4	33.0	4.6	22.2	3.2	15.5	3.6	0.5	0.3	265
80+	5.3	3.3	11.1	3.4	20.4	2.9	26.3	5.5	36.9	8.7	0.0	0.0	76
M	0.0	0.0	0.0	0.0	0.0	0.0	0.0	0.0	0.0	0.0	0.0	0.0	
All	57.8	3.4	20.4	1.7	12.9	1.3	6.2	0.6	2.7	0.4	0.0	0.0	3,993

## 6.05 Difficulty with 'self-care' in last 30 days - q2020

	None	SE	Mild	SE	Moderate	SE	Sever	SE	Extreme/ Cannot do	SE	Missing	SE	N
<b>Gender</b>													
Male	92.3	1.0	5.2	0.9	1.6	0.5	0.8	0.3	0.1	0.1	0.0	0.0	1,957
Female	90.2	1.1	7.1	0.9	1.7	0.4	0.4	0.2	0.5	0.2	0.0	0.0	2,036
M	0.0	0.0	0.0	0.0	0.0	0.0	0.0	0.0	0.0	0.0	0.0	0.0	
<b>Residence</b>													
Urban	87.5	1.4	8.5	1.7	3.0	0.6	0.7	0.3	0.3	0.1	0.1	0.0	1,229
Rural	92.9	1.0	5.1	0.8	1.0	0.3	0.6	0.2	0.3	0.1	0.0	0.0	2,764
M	0.0	0.0	0.0	0.0	0.0	0.0	0.0	0.0	0.0	0.0	0.0	0.0	
<b>Income</b>													
Q1(poorest)	83.9	3.1	9.8	1.7	4.3	1.5	1.7	0.5	0.4	0.4	0.0	0.0	566
Q2	88.7	1.3	8.9	1.2	1.3	0.5	0.9	0.5	0.3	0.3	0.0	0.0	732
Q3	92.4	1.1	5.3	0.9	1.7	0.4	0.5	0.3	0.1	0.1	0.0	0.0	893
Q4	92.2	1.6	5.8	1.8	1.1	0.6	0.3	0.2	0.6	0.4	0.0	0.0	1,008
Q5(richest)	96.9	0.9	2.4	0.8	0.5	0.3	0.1	0.1	0.0	0.0	0.1	0.1	775
M	84.3	7.2	6.8	5.0	8.9	3.6	0.0	0.0	0.0	0.0	0.0	0.0	19
<b>Age</b>													
18-29	98.2	0.7	1.6	0.7	0.2	0.1	0.0	0.0	0.0	0.0	0.0	0.0	732
30-44	95.8	0.6	3.5	0.6	0.3	0.2	0.1	0.1	0.2	0.2	0.1	0.0	1,286
45-59	93.4	1.3	4.4	1.0	1.8	0.3	0.4	0.2	0.0	0.0	0.0	0.0	1,212
60-69	84.6	3.0	11.7	2.9	1.9	0.5	1.4	0.7	0.5	0.3	0.0	0.0	422
70-79	62.6	3.9	25.9	2.9	7.0	2.3	2.8	1.5	1.7	1.4	0.0	0.0	265
80+	51.1	13.7	24.0	8.0	14.9	4.5	5.6	3.2	4.3	3.0	0.0	0.0	76
M	0.0	0.0	0.0	0.0	0.0	0.0	0.0	0.0	0.0	0.0	0.0	0.0	
All	91.3	0.9	6.2	0.8	1.6	0.4	0.6	0.2	0.3	0.1	0.0	0.0	3,993

**6.06 Difficulty with 'taking care of and maintaining general appearance' in last 30 days - q2021**

	None	SE	Mild	SE	Moderate	SE	Sever	SE	Extreme/ Cannot do	SE	Missing	SE	N
<b>Gender</b>													
Male	92.7	0.8	5.0	0.8	1.8	0.6	0.4	0.2	0.0	0.0	0.1	0.1	1,957
Female	90.9	0.9	6.9	0.7	1.4	0.4	0.6	0.2	0.2	0.1	0.1	0.1	2,036
M	0.0	0.0	0.0	0.0	0.0	0.0	0.0	0.0	0.0	0.0	0.0	0.0	
<b>Residence</b>													
Urban	88.4	1.3	8.0	1.4	2.6	0.6	0.5	0.2	0.3	0.1	0.2	0.2	1,229
Rural	93.3	0.8	5.1	0.7	1.2	0.4	0.5	0.2	0.0	0.0	0.0	0.0	2,764
M	0.0	0.0	0.0	0.0	0.0	0.0	0.0	0.0	0.0	0.0	0.0	0.0	
<b>Income</b>													
Q1(poorest)	84.1	2.6	9.9	1.6	4.3	1.4	1.7	0.6	0.0	0.0	0.0	0.0	566
Q2	88.5	1.4	9.1	1.5	1.9	0.6	0.5	0.2	0.0	0.0	0.0	0.0	732
Q3	93.4	1.2	4.4	1.1	1.6	0.3	0.3	0.1	0.1	0.1	0.1	0.1	893
Q4	93.1	1.6	5.5	1.6	0.8	0.6	0.3	0.2	0.2	0.2	0.1	0.1	1,008
Q5(richest)	97.1	1.0	2.3	0.9	0.4	0.3	0.1	0.1	0.0	0.0	0.1	0.1	775
M	84.3	7.2	12.5	4.9	3.2	2.8	0.0	0.0	0.0	0.0	0.0	0.0	19
<b>Age</b>													
18-29	98.4	0.8	1.5	0.7	0.2	0.1	0.0	0.0	0.0	0.0	0.0	0.0	732
30-44	95.7	0.6	3.5	0.6	0.4	0.2	0.2	0.2	0.0	0.0	0.1	0.1	1,286
45-59	93.6	1.1	4.4	1.0	1.6	0.3	0.4	0.2	0.0	0.0	0.0	0.0	1,212
60-69	87.5	2.4	9.6	2.6	1.4	0.5	1.0	0.5	0.5	0.3	0.0	0.0	422
70-79	67.1	4.0	23.3	2.9	7.3	2.4	1.8	0.8	0.1	0.1	0.4	0.4	265
80+	42.6	6.8	35.5	7.1	17.6	8.8	2.7	1.2	1.5	1.4	0.0	0.0	76
M	0.0	0.0	0.0	0.0	0.0	0.0	0.0	0.0	0.0	0.0	0.0	0.0	
All	91.8	0.8	6.0	0.7	1.6	0.4	0.5	0.1	0.1	0.0	0.1	0.1	3,993

**6.07 Amount of 'bodily aches or pains' in last 30 days - q2030**

	None	SE	Mild	SE	Moderate	SE	Sever	SE	Extreme/ Cannot do	SE	Missing	SE	N
<b>Gender</b>													
Male	72.0	2.3	20.4	1.5	6.3	1.1	1.3	0.3	0.1	0.0	0.0	0.0	1,957
Female	61.2	2.1	28.6	2.2	7.8	1.2	2.4	0.5	0.0	0.0	0.0	0.0	2,036
M	0.0	0.0	0.0	0.0	0.0	0.0	0.0	0.0	0.0	0.0	0.0	0.0	
<b>Residence</b>													
Urban	63.1	3.0	27.3	2.7	8.1	1.0	1.5	0.4	0.0	0.0	0.0	0.0	1,229
Rural	68.0	2.5	23.4	1.8	6.6	1.2	2.0	0.5	0.0	0.0	0.0	0.0	2,764
M	0.0	0.0	0.0	0.0	0.0	0.0	0.0	0.0	0.0	0.0	0.0	0.0	
<b>Income</b>													
Q1(poorest)	51.0	3.2	32.9	2.7	12.6	1.8	3.3	1.2	0.2	0.2	0.0	0.0	566
Q2	62.1	2.4	26.8	2.6	8.2	1.0	2.8	0.9	0.0	0.0	0.0	0.0	732
Q3	67.5	3.2	22.9	2.0	7.9	1.8	1.7	0.6	0.0	0.0	0.0	0.0	893
Q4	67.0	2.9	26.0	2.6	5.9	1.4	1.1	0.4	0.0	0.0	0.0	0.0	1,008
Q5(richest)	80.4	2.2	16.7	1.8	2.2	0.8	0.8	0.5	0.0	0.0	0.0	0.0	775
M	60.9	12.1	14.0	6.1	25.1	10.6	0.0	0.0	0.0	0.0	0.0	0.0	19
<b>Age</b>													
18-29	90.7	2.5	8.3	2.3	0.9	0.4	0.0	0.0	0.0	0.0	0.0	0.0	732
30-44	75.3	2.2	19.7	2.1	4.2	0.9	0.8	0.3	0.1	0.1	0.0	0.0	1,286
45-59	60.7	3.3	29.4	2.1	7.9	2.0	1.9	0.7	0.0	0.0	0.0	0.0	1,212
60-69	48.5	3.2	35.7	2.6	12.0	1.9	3.8	0.8	0.0	0.0	0.0	0.0	422
70-79	26.6	3.2	44.0	5.9	23.3	3.8	6.0	1.8	0.1	0.1	0.0	0.0	265
80+	16.9	4.4	56.5	6.7	18.3	4.2	8.4	3.5	0.0	0.0	0.0	0.0	76
M	0.0	0.0	0.0	0.0	0.0	0.0	0.0	0.0	0.0	0.0	0.0	0.0	
All	66.5	2.0	24.6	1.5	7.1	0.9	1.8	0.4	0.0	0.0			3,993

**6.08 Amount of 'bodily discomfort' in last 30 days - q2031**

	None	SE	Mild	SE	Moderate	SE	Sever	SE	Extreme/ Cannot do	SE	Missing	SE	N
<b>Gender</b>													
Male	69.3	2.3	22.8	1.8	6.4	1.1	1.4	0.4	0.1	0.0	0.0	0.0	1,957
Female	58.8	2.2	30.5	2.4	8.2	1.1	2.2	0.5	0.2	0.2	0.1	0.1	2,036
M	0.0	0.0	0.0	0.0	0.0	0.0	0.0	0.0	0.0	0.0	0.0	0.0	
<b>Residence</b>													
Urban	60.3	3.1	29.8	2.9	8.1	0.8	1.5	0.4	0.1	0.1	0.1	0.1	1,229
Rural	65.5	2.7	25.4	2.6	6.9	1.1	2.0	0.5	0.2	0.1	0.0	0.0	2,764
M	0.0	0.0	0.0	0.0	0.0	0.0	0.0	0.0	0.0	0.0	0.0	0.0	
<b>Income</b>													
Q1(poorest)	48.5	3.3	35.2	3.1	12.4	1.8	3.8	1.2	0.1	0.1	0.0	0.0	566
Q2	59.1	2.7	28.5	3.1	9.5	1.5	2.9	0.9	0.0	0.0	0.0	0.0	732
Q3	64.8	3.4	26.3	2.7	7.1	1.5	1.8	0.5	0.0	0.0	0.0	0.0	893
Q4	64.8	3.3	27.1	3.6	6.8	1.4	0.8	0.3	0.5	0.4	0.0	0.0	1,008
Q5(richest)	77.6	2.0	19.4	1.5	1.9	0.6	0.9	0.5	0.0	0.0	0.2	0.1	775
M	60.9	12.1	14.0	6.1	25.1	10.6	0.0	0.0	0.0	0.0	0.0	0.0	19
<b>Age</b>													
18-29	87.3	2.6	11.7	2.5	1.0	0.4	0.0	0.0	0.0	0.0	0.0	0.0	732
30-44	72.2	2.2	22.2	2.2	4.7	0.9	0.7	0.2	0.3	0.3	0.0	0.0	1,286
45-59	59.5	3.1	30.7	2.8	7.5	2.0	2.1	0.8	0.1	0.1	0.1	0.1	1,212
60-69	45.7	3.7	39.5	3.1	11.2	1.6	3.7	0.9	0.0	0.0	0.0	0.0	422
70-79	23.6	3.7	43.5	5.4	26.6	3.0	6.2	1.8	0.1	0.1	0.0	0.0	265
80+	11.5	4.8	57.8	7.9	20.0	4.8	8.4	3.5	2.4	1.4	0.0	0.0	76
M	0.0	0.0	0.0	0.0	0.0	0.0	0.0	0.0	0.0	0.0	0.0	0.0	
All	63.9	2.1	26.8	2.0	7.3	0.8	1.8	0.4	0.2	0.1	0.0	0.0	3,993

**6.09      Difficulty with 'concentrating or remembering things' in last 30 days - q2050**

	None	SE	Mild	SE	Moderate	SE	Sever	SE	Extreme/ Cannot do	SE	Missing	SE	N
<b>Gender</b>													
Male	71.6	2.0	21.0	1.6	6.3	0.6	1.1	0.4	0.0	0.0	0.0	0.0	1,957
Female	62.2	2.2	27.3	2.0	8.7	1.0	1.6	0.3	0.2	0.1	0.1	0.1	2,036
M	0.0	0.0	0.0	0.0	0.0	0.0	0.0	0.0	0.0	0.0	0.0	0.0	
<b>Residence</b>													
Urban	65.9	2.5	25.7	1.9	7.0	1.0	1.1	0.2	0.1	0.1	0.1	0.1	1,229
Rural	67.2	2.0	23.5	1.7	7.7	0.9	1.5	0.4	0.1	0.1	0.0	0.0	2,764
M	0.0	0.0	0.0	0.0	0.0	0.0	0.0	0.0	0.0	0.0	0.0	0.0	
<b>Income</b>													
Q1(poorest)	51.2	3.4	30.4	2.0	13.7	1.8	4.2	1.0	0.4	0.4	0.0	0.0	566
Q2	59.0	2.3	27.6	2.7	12.1	1.6	1.3	0.7	0.0	0.0	0.0	0.0	732
Q3	68.5	2.9	22.7	2.0	7.8	1.3	1.0	0.3	0.0	0.0	0.0	0.0	893
Q4	72.4	3.3	22.0	3.4	4.5	0.8	1.0	0.8	0.1	0.1	0.0	0.0	1,008
Q5(richest)	76.3	2.1	21.4	2.0	1.9	0.6	0.2	0.1	0.1	0.1	0.2	0.2	775
M	65.0	11.2	10.3	4.5	22.6	11.3	2.1	2.1	0.0	0.0	0.0	0.0	19
<b>Age</b>													
18-29	91.9	1.3	6.7	1.1	0.8	0.6	0.6	0.3	0.0	0.0	0.0	0.0	732
30-44	78.4	2.1	18.6	2.0	2.6	0.7	0.1	0.0	0.2	0.2	0.1	0.1	1,286
45-59	62.9	3.6	28.9	3.0	7.8	1.1	0.3	0.2	0.1	0.1	0.0	0.0	1,212
60-69	38.8	3.4	43.5	2.9	16.1	2.3	1.7	0.8	0.0	0.0	0.0	0.0	422
70-79	20.2	4.1	45.8	4.3	23.4	5.0	10.3	3.4	0.3	0.2	0.0	0.0	265
80+	9.3	3.8	30.2	6.1	47.0	6.7	13.1	3.4	0.3	0.3	0.0	0.0	76
M	0.0	0.0	0.0	0.0	0.0	0.0	0.0	0.0	0.0	0.0	0.0	0.0	
All	66.8	1.6	24.2	1.4	7.5	0.7	1.3	0.3	0.1	0.1	0.0	0.0	3,993



## 6.10 Difficulty with 'learning a new task' in last 30 days - q2051

	None	SE	Mild	SE	Moderate	SE	Sever	SE	Extreme/ Cannot do	SE	Missing	SE	N
<b>Gender</b>													
Male	71.5	2.2	17.8	1.9	7.1	0.8	3.0	0.6	0.6	0.2	0.0	0.0	1,957
Female	61.8	2.7	22.0	1.6	11.8	1.5	3.6	1.0	0.6	0.3	0.0	0.0	2,036
M	0.0	0.0	0.0	0.0	0.0	0.0	0.0	0.0	0.0	0.0	0.0	0.0	
<b>Residence</b>													
Urban	68.0	2.6	18.9	1.9	9.7	1.1	2.5	0.2	0.8	0.6	0.1	0.1	1,229
Rural	65.9	2.5	20.4	1.6	9.4	1.5	3.7	1.1	0.5	0.2	0.0	0.0	2,764
M	0.0	0.0	0.0	0.0	0.0	0.0	0.0	0.0	0.0	0.0	0.0	0.0	
<b>Income</b>													
Q1(poorest)	49.0	3.2	26.2	3.8	16.0	3.1	7.8	2.3	1.0	0.4	0.0	0.0	566
Q2	58.3	3.7	22.3	2.7	12.0	1.8	6.8	2.2	0.6	0.4	0.0	0.0	732
Q3	68.0	2.7	19.3	2.1	10.2	1.9	1.6	0.4	0.9	0.4	0.1	0.1	893
Q4	72.9	2.3	16.6	1.7	7.8	1.2	2.2	1.1	0.5	0.3	0.0	0.0	1,008
Q5(richest)	77.5	2.1	18.5	2.4	3.5	1.1	0.4	0.1	0.1	0.1	0.0	0.0	775
M	60.9	12.1	13.7	9.0	23.4	11.4	2.1	2.1	0.0	0.0	0.0	0.0	19
<b>Age</b>													
18-29	92.4	1.8	4.9	1.2	1.8	0.8	0.5	0.4	0.3	0.3	0.0	0.0	732
30-44	77.7	2.4	16.9	1.9	4.0	1.3	1.1	0.5	0.4	0.2	0.1	0.1	1,286
45-59	62.3	2.8	25.0	1.7	10.0	2.3	2.3	0.8	0.4	0.2	0.0	0.0	1,212
60-69	40.2	4.0	32.9	2.7	20.7	3.4	5.7	2.5	0.5	0.4	0.0	0.0	422
70-79	19.2	3.9	33.9	4.8	26.9	3.2	18.2	3.7	1.8	1.2	0.0	0.0	265
80+	9.8	4.6	15.0	2.9	46.0	6.9	22.0	6.3	7.2	2.5	0.0	0.0	76
M	0.0	0.0	0.0	0.0	0.0	0.0	0.0	0.0	0.0	0.0	0.0	0.0	
All	66.6	1.9	19.9	1.2	9.5	1.1	3.3	0.8	0.6	0.2	0.0	0.0	3,993

**6.11 Difficulty with 'personal relationships or participation in the community' in last 30 days - q2060**

	None	SE	Mild	SE	Moderate	SE	Sever	SE	Extreme/ Cannot do	SE	Missing	SE	N
<b>Gender</b>													
Male	83.7	2.3	11.7	1.8	3.3	0.6	1.1	0.3	0.1	0.1	0.0	0.0	1,957
Female	81.6	1.6	13.4	1.7	4.0	0.6	0.8	0.2	0.2	0.1	0.1	0.0	2,036
M	0.0	0.0	0.0	0.0	0.0	0.0	0.0	0.0	0.0	0.0	0.0	0.0	
<b>Residence</b>													
Urban	82.2	1.7	11.8	1.5	4.7	1.4	1.0	0.4	0.2	0.1	0.1	0.1	1,229
Rural	82.8	2.6	12.9	2.3	3.2	0.4	0.9	0.2	0.2	0.2	0.0	0.0	2,764
M	0.0	0.0	0.0	0.0	0.0	0.0	0.0	0.0	0.0	0.0	0.0	0.0	
<b>Income</b>													
Q1(poorest)	65.5	4.8	24.8	4.1	6.8	1.4	2.4	0.4	0.4	0.4	0.0	0.0	566
Q2	79.2	2.6	15.2	2.6	4.4	0.9	1.2	0.5	0.0	0.0	0.0	0.0	732
Q3	82.9	2.1	12.1	2.0	3.8	1.3	0.8	0.3	0.3	0.2	0.1	0.1	893
Q4	86.4	2.2	9.3	2.0	3.3	1.3	0.8	0.4	0.2	0.1	0.0	0.0	1,008
Q5(richest)	93.2	1.4	5.8	1.4	0.8	0.3	0.1	0.1	0.1	0.1	0.0	0.0	775
M	79.7	9.9	10.4	4.7	9.9	6.0	0.0	0.0	0.0	0.0	0.0	0.0	19
<b>Age</b>													
18-29	89.5	4.3	8.6	3.3	1.9	1.1	0.0	0.0	0.0	0.0	0.0	0.0	732
30-44	86.9	1.6	11.7	1.6	0.9	0.4	0.2	0.1	0.3	0.2	0.1	0.1	1,286
45-59	84.9	2.4	11.0	2.3	3.5	0.7	0.6	0.3	0.0	0.0	0.0	0.0	1,212
60-69	72.3	3.0	20.6	3.4	5.4	1.1	1.5	0.7	0.0	0.0	0.2	0.2	422
70-79	61.1	2.8	19.2	1.9	16.1	2.9	3.5	1.9	0.1	0.1	0.0	0.0	265
80+	40.4	7.8	22.6	5.2	16.4	4.0	16.4	6.1	4.1	3.0	0.0	0.0	76
M	0.0	0.0	0.0	0.0	0.0	0.0	0.0	0.0	0.0	0.0	0.0	0.0	
All	82.6	1.8	12.6	1.7	3.7	0.5	0.9	0.2	0.2	0.1	0.0	0.0	3,993

## 6.12 Difficulty with 'dealing with conflicts and tensions' in last 30 days - q2061

	None	SE	Mild	SE	Moderate	SE	Sever	SE	Extreme/ Cannot do	SE	Missing	SE	N
<b>Gender</b>													
Male	84.4	2.4	11.6	2.5	3.0	0.6	1.0	0.3	0.0	0.0	0.0	0.0	1,957
Female	82.3	1.6	12.6	1.4	4.2	0.7	0.7	0.2	0.1	0.1	0.0	0.0	2,036
M	0.0	0.0	0.0	0.0	0.0	0.0	0.0	0.0	0.0	0.0	0.0	0.0	
<b>Residence</b>													
Urban	82.4	1.7	11.6	1.6	4.9	1.5	1.0	0.6	0.1	0.0	0.0	0.0	1,229
Rural	83.7	2.7	12.3	2.5	3.1	0.4	0.8	0.1	0.1	0.1	0.0	0.0	2,764
M	0.0	0.0	0.0	0.0	0.0	0.0	0.0	0.0	0.0	0.0	0.0	0.0	
<b>Income</b>													
Q1(poorest)	67.8	4.4	23.7	4.6	6.7	1.7	1.4	0.5	0.5	0.4	0.0	0.0	566
Q2	79.4	2.4	16.1	2.1	2.9	0.6	1.7	0.7	0.0	0.0	0.0	0.0	732
Q3	82.5	2.5	12.2	2.0	4.5	1.3	0.8	0.3	0.0	0.0	0.0	0.0	893
Q4	87.5	2.2	8.4	2.2	3.3	1.3	0.7	0.4	0.0	0.0	0.0	0.0	1,008
Q5(richest)	93.9	1.4	4.6	1.1	1.3	0.5	0.1	0.1	0.1	0.1	0.0	0.0	775
M	79.7	9.9	8.1	5.2	12.1	5.4	0.0	0.0	0.0	0.0	0.0	0.0	19
<b>Age</b>													
18-29	93.0	2.2	5.4	1.3	1.6	1.0	0.0	0.0	0.0	0.0	0.0	0.0	732
30-44	85.9	2.2	12.7	2.2	1.1	0.4	0.1	0.1	0.2	0.2	0.0	0.0	1,286
45-59	85.0	2.7	11.1	2.9	3.3	0.8	0.6	0.3	0.0	0.0	0.0	0.0	1,212
60-69	75.9	3.0	18.3	2.9	4.8	1.0	0.8	0.5	0.1	0.1	0.1	0.1	422
70-79	58.9	3.7	19.8	2.3	16.7	3.2	4.5	2.4	0.1	0.1	0.0	0.0	265
80+	45.2	8.3	21.0	5.0	18.7	4.6	14.3	7.0	0.8	0.7	0.0	0.0	76
M	0.0	0.0	0.0	0.0	0.0	0.0	0.0	0.0	0.0	0.0	0.0	0.0	
All	83.3	1.9	12.1	1.8	3.6	0.5	0.9	0.2	0.1	0.1	0.0	0.0	3,993

**6.13 Difficulty with 'seeing and recognizing a person you know across the road (20m)' in last 30 days - q2071**

	None	SE	Mild	SE	Moderate	SE	Sever	SE	Extreme/ Cannot do	SE	Missing	SE	N
<b>Gender</b>													
Male	78.8	3.2	13.3	2.0	5.6	1.5	1.3	0.4	0.6	0.4	0.5	0.2	1,957
Female	75.6	4.0	16.0	3.2	6.7	1.0	1.5	0.3	0.1	0.1	0.1	0.1	2,036
M	0.0	0.0	0.0	0.0	0.0	0.0	0.0	0.0	0.0	0.0	0.0	0.0	
<b>Residence</b>													
Urban	70.2	5.6	20.5	4.1	7.5	1.7	1.3	0.4	0.2	0.1	0.3	0.2	1,229
Rural	80.2	4.5	12.1	3.1	5.6	1.4	1.4	0.3	0.4	0.3	0.3	0.2	2,764
M	0.0	0.0	0.0	0.0	0.0	0.0	0.0	0.0	0.0	0.0	0.0	0.0	
<b>Income</b>													
Q1(poorest)	73.9	3.8	14.6	2.9	8.0	2.1	2.1	0.4	0.9	0.6	0.5	0.4	566
Q2	77.5	3.0	14.5	2.0	5.1	1.0	1.8	0.4	1.0	0.6	0.1	0.1	732
Q3	77.0	3.4	13.4	2.2	7.8	1.7	1.3	0.4	0.2	0.1	0.2	0.2	893
Q4	77.9	5.9	14.3	3.5	6.1	2.1	1.5	0.7	0.0	0.0	0.2	0.2	1,008
Q5(richest)	78.4	3.9	16.8	3.6	3.9	0.8	0.5	0.2	0.0	0.0	0.5	0.3	775
M	74.5	9.3	13.4	6.0	12.1	5.4	0.0	0.0	0.0	0.0	0.0	0.0	19
<b>Age</b>													
18-29	89.5	1.7	5.8	1.3	3.9	1.3	0.1	0.1	0.0	0.0	0.7	0.5	732
30-44	89.3	3.1	9.0	2.6	1.2	0.5	0.2	0.1	0.0	0.0	0.3	0.2	1,286
45-59	74.3	5.4	17.8	4.6	6.5	1.3	0.8	0.4	0.4	0.3	0.2	0.1	1,212
60-69	61.9	2.8	26.3	2.5	9.9	1.4	1.8	0.6	0.1	0.1	0.0	0.0	422
70-79	34.7	5.1	33.9	2.4	20.4	2.7	8.6	3.1	2.5	1.8	0.0	0.0	265
80+	31.0	6.1	13.6	3.6	36.2	7.4	16.2	4.4	3.0	2.8	0.0	0.0	76
M	0.0	0.0	0.0	0.0	0.0	0.0	0.0	0.0	0.0	0.0	0.0	0.0	
All	77.1	3.6	14.7	2.5	6.2	1.1	1.4	0.2	0.4	0.2	0.3	0.2	3,993

## 6.14 Difficulty with 'seeing an object at arm's length or in reading' in last 30 days - q2072

	None	SE	Mild	SE	Moderate	SE	Sever	SE	Extreme/ Cannot do	SE	Missing	SE	N
<b>Gender</b>													
Male	75.9	2.7	14.5	1.5	7.4	1.7	1.5	0.3	0.3	0.1	0.5	0.2	1,957
Female	72.0	3.6	18.1	2.9	8.3	1.0	1.1	0.2	0.1	0.0	0.3	0.1	2,036
M	0.0	0.0	0.0	0.0	0.0	0.0	0.0	0.0	0.0	0.0	0.0	0.0	
<b>Residence</b>													
Urban	68.5	6.4	21.2	4.0	8.1	2.3	1.6	0.4	0.1	0.1	0.5	0.2	1,229
Rural	76.3	3.2	14.2	2.3	7.7	1.3	1.2	0.3	0.2	0.1	0.3	0.2	2,764
M	0.0	0.0	0.0	0.0	0.0	0.0	0.0	0.0	0.0	0.0	0.0	0.0	
<b>Income</b>													
Q1(poorest)	71.6	3.4	15.2	1.9	9.7	2.0	2.0	0.8	0.7	0.4	0.8	0.5	566
Q2	75.5	3.0	14.0	1.7	7.4	1.5	2.4	0.7	0.4	0.2	0.2	0.2	732
Q3	71.6	3.6	18.2	2.6	8.5	1.7	1.5	0.4	0.1	0.0	0.2	0.2	893
Q4	73.7	5.6	16.6	4.0	8.6	1.8	0.9	0.3	0.0	0.0	0.2	0.2	1,008
Q5(richest)	76.7	2.4	17.2	1.4	5.1	1.6	0.3	0.2	0.1	0.0	0.6	0.4	775
M	84.7	7.8	6.2	3.1	9.1	5.4	0.0	0.0	0.0	0.0	0.0	0.0	19
<b>Age</b>													
18-29	90.5	1.6	5.5	1.1	3.3	0.7	0.0	0.0	0.0	0.0	0.7	0.5	732
30-44	89.4	3.2	8.5	2.4	1.2	0.6	0.4	0.3	0.0	0.0	0.3	0.2	1,286
45-59	66.4	3.2	22.5	2.7	9.3	0.8	0.8	0.4	0.5	0.2	0.4	0.2	1,212
60-69	54.5	3.2	29.9	3.0	13.7	2.5	1.9	0.6	0.0	0.0	0.0	0.0	422
70-79	31.4	5.3	32.6	3.0	28.9	5.1	6.1	1.8	0.6	0.3	0.4	0.4	265
80+	27.2	8.8	22.8	8.1	32.1	5.4	17.6	7.9	0.2	0.2	0.0	0.0	76
M	0.0	0.0	0.0	0.0	0.0	0.0	0.0	0.0	0.0	0.0	0.0	0.0	
All	73.9	3.1	16.3	2.1	7.8	1.1	1.3	0.2	0.2	0.1	0.4	0.2	3,993

## 6.15 Problem with 'sleeping' in last 30 days - q2080

	None	SE	Mild	SE	Moderate	SE	Sever	SE	Extreme/ Cannot do	SE	Missing	SE	N
<b>Gender</b>													
Male	75.0	2.4	18.4	1.7	5.7	0.8	0.7	0.2	0.2	0.1	0.1	0.1	1,957
Female	65.0	3.0	24.7	3.2	7.7	1.0	2.5	0.5	0.0	0.0	0.1	0.1	2,036
M	0.0	0.0	0.0	0.0	0.0	0.0	0.0	0.0	0.0	0.0	0.0	0.0	
<b>Residence</b>													
Urban	64.5	4.5	24.5	3.0	9.1	1.5	1.7	0.5	0.1	0.1	0.1	0.1	1,229
Rural	72.3	2.5	20.3	2.6	5.7	0.9	1.6	0.4	0.1	0.1	0.1	0.1	2,764
M	0.0	0.0	0.0	0.0	0.0	0.0	0.0	0.0	0.0	0.0	0.0	0.0	
<b>Income</b>													
Q1(poorest)	59.4	3.5	27.2	2.6	9.7	1.9	3.4	1.1	0.0	0.0	0.3	0.3	566
Q2	67.3	3.2	23.1	2.9	8.1	1.4	1.1	0.7	0.4	0.4	0.0	0.0	732
Q3	67.6	3.6	23.4	3.0	6.9	1.6	2.0	0.6	0.0	0.0	0.0	0.0	893
Q4	75.5	3.9	17.1	3.0	6.0	1.2	1.4	0.6	0.1	0.1	0.0	0.0	1,008
Q5(richest)	75.7	2.0	19.6	2.7	4.0	1.5	0.5	0.3	0.0	0.0	0.2	0.1	775
M	54.5	11.4	34.5	10.7	10.2	4.0	0.8	0.7	0.0	0.0	0.0	0.0	19
<b>Age</b>													
18-29	84.4	3.2	13.4	3.4	2.0	1.1	0.2	0.2	0.0	0.0	0.0	0.0	732
30-44	76.4	2.6	18.2	2.0	3.9	1.0	1.4	0.6	0.0	0.0	0.1	0.1	1,286
45-59	67.8	2.6	22.8	1.9	7.8	1.4	1.4	0.3	0.1	0.1	0.1	0.2	1,212
60-69	56.4	3.9	31.5	2.8	10.0	2.2	2.2	1.0	0.0	0.0	0.0	0.0	422
70-79	39.2	4.0	36.7	4.5	18.7	4.4	4.3	2.0	1.2	1.1	0.0	0.0	265
80+	37.9	4.9	30.8	8.9	23.8	6.3	7.6	3.4	0.0	0.0	0.0	0.0	76
M	0.0	0.0	0.0	0.0	0.0	0.0	0.0	0.0	0.0	0.0	0.0	0.0	
All	69.9	2.3	21.6	2.0	6.7	0.8	1.6	0.4	0.1	0.1	0.1	0.0	3,993

**6.16 Problem with 'feeling rested and refreshed' in last 30 days - q2081**

	None	SE	Mild	SE	Moderate	SE	Sever	SE	Extreme/ Cannot do	SE	Missing	SE	N
<b>Gender</b>													
Male	76.1	2.4	17.5	1.9	5.7	0.7	0.6	0.2	0.0	0.0	0.1	0.1	1,957
Female	64.9	2.5	26.4	2.6	7.5	1.2	1.2	0.3	0.0	0.0	0.0	0.0	2,036
M	0.0	0.0	0.0	0.0	0.0	0.0	0.0	0.0	0.0	0.0	0.0	0.0	
<b>Residence</b>													
Urban	65.1	3.6	25.3	2.1	8.7	1.7	0.8	0.2	0.0	0.0	0.1	0.1	1,229
Rural	72.7	2.4	20.6	2.3	5.7	0.9	1.0	0.3	0.0	0.0	0.0	0.0	2,764
M	0.0	0.0	0.0	0.0	0.0	0.0	0.0	0.0	0.0	0.0	0.0	0.0	
<b>Income</b>													
Q1(poorest)	59.9	3.9	27.4	2.7	10.6	2.0	1.9	0.8	0.1	0.1	0.0	0.0	566
Q2	67.7	2.7	24.7	2.8	6.6	1.0	1.0	0.3	0.0	0.0	0.0	0.0	732
Q3	68.7	3.5	23.7	3.0	6.8	1.5	0.8	0.3	0.0	0.0	0.0	0.0	893
Q4	75.5	3.1	18.1	2.1	5.3	1.5	1.1	0.4	0.0	0.0	0.0	0.0	1,008
Q5(richest)	76.0	2.6	18.8	2.6	5.0	2.4	0.1	0.1	0.0	0.0	0.2	0.1	775
M	61.1	10.3	29.2	10.7	8.9	3.6	0.8	0.7	0.0	0.0	0.0	0.0	19
<b>Age</b>													
18-29	84.3	3.0	13.5	3.1	2.1	1.1	0.1	0.1	0.0	0.0	0.0	0.0	732
30-44	74.4	2.9	20.4	2.5	4.1	1.0	1.0	0.4	0.0	0.0	0.1	0.1	1,286
45-59	70.0	2.9	21.8	2.0	7.7	1.6	0.5	0.2	0.0	0.0	0.0	0.0	1,212
60-69	57.7	4.2	30.1	3.3	10.6	2.3	1.5	0.7	0.1	0.1	0.0	0.0	422
70-79	43.4	3.8	37.1	3.1	16.6	4.1	2.7	1.3	0.1	0.1	0.0	0.0	265
80+	37.2	4.5	39.2	5.0	17.7	3.4	5.9	3.2	0.0	0.0	0.0	0.0	76
M	0.0	0.0	0.0	0.0	0.0	0.0	0.0	0.0	0.0	0.0	0.0	0.0	
All	70.4	2.0	22.1	1.7	6.6	0.9	0.9	0.2	0.0	0.0	0.0	0.0	3,993

## 6.17 Problem with 'feeling sad, low, or depressed' in last 30 days - q2090

	None	SE	Mild	SE	Moderate	SE	Sever	SE	Extreme/ Cannot do	SE	Missing	SE	N
<b>Gender</b>													
Male	79.2	2.5	14.7	2.0	5.0	0.7	0.6	0.2	0.3	0.1	0.1	0.1	1,957
Female	73.5	3.2	19.8	2.8	5.7	1.1	0.9	0.3	0.1	0.1	0.0	0.0	2,036
M	0.0	0.0	0.0	0.0	0.0	0.0	0.0	0.0	0.0	0.0	0.0	0.0	
<b>Residence</b>													
Urban	79.1	2.3	14.9	2.1	5.1	0.6	0.7	0.1	0.1	0.1	0.1	0.1	1,229
Rural	75.1	3.7	18.4	3.0	5.5	1.2	0.8	0.3	0.3	0.1	0.0	0.0	2,764
M	0.0	0.0	0.0	0.0	0.0	0.0	0.0	0.0	0.0	0.0	0.0	0.0	
<b>Income</b>													
Q1(poorest)	57.4	4.6	25.7	2.6	13.3	2.4	2.7	1.2	0.8	0.4	0.0	0.0	566
Q2	75.8	3.6	17.1	3.1	5.8	1.3	1.3	0.5	0.0	0.0	0.0	0.0	732
Q3	73.9	3.7	19.4	3.3	5.9	1.3	0.2	0.1	0.5	0.3	0.0	0.0	893
Q4	83.6	3.0	13.3	2.8	2.7	0.6	0.4	0.2	0.0	0.0	0.0	0.0	1,008
Q5(richest)	84.1	3.8	14.0	3.7	1.7	0.4	0.1	0.1	0.0	0.0	0.2	0.1	775
M	66.1	11.3	20.2	9.0	13.8	6.7	0.0	0.0	0.0	0.0	0.0	0.0	19
<b>Age</b>													
18-29	88.2	2.3	9.1	2.2	2.7	1.0	0.0	0.0	0.0	0.0	0.0	0.0	732
30-44	76.1	3.2	18.3	3.0	4.0	0.7	1.2	0.3	0.3	0.1	0.1	0.1	1,286
45-59	75.4	3.3	17.5	3.1	6.2	1.8	0.5	0.3	0.4	0.2	0.0	0.0	1,212
60-69	73.2	3.4	17.4	2.9	8.1	1.4	1.3	0.6	0.0	0.0	0.0	0.0	422
70-79	60.9	4.0	30.6	3.2	7.4	2.7	0.9	0.5	0.1	0.1	0.0	0.0	265
80+	50.8	11.9	28.3	8.5	18.8	8.2	2.1	1.1	0.0	0.0	0.0	0.0	76
M	0.0	0.0	0.0	0.0	0.0	0.0	0.0	0.0	0.0	0.0	0.0	0.0	
All	76.3	2.7	17.3	2.2	5.4	0.8	0.8	0.2	0.2	0.1	0.0	0.0	3,993



**6.18 Problem with 'worry or anxiety' in last 30 days - q2091**

	None	SE	Mild	SE	Moderate	SE	Sever	SE	Extreme/ Cannot do	SE	Missing	SE	N
<b>Gender</b>													
Male	75.0	2.7	18.4	2.1	5.5	0.9	0.8	0.2	0.3	0.2	0.1	0.1	1,957
Female	68.9	3.8	23.7	3.5	6.2	1.2	1.0	0.2	0.2	0.1	0.0	0.0	2,036
M	0.0	0.0	0.0	0.0	0.0	0.0	0.0	0.0	0.0	0.0	0.0	0.0	
<b>Residence</b>													
Urban	73.4	2.8	19.6	2.5	6.0	0.7	0.8	0.1	0.1	0.1	0.1	0.1	1,229
Rural	71.2	4.2	21.8	3.5	5.8	1.4	1.0	0.3	0.2	0.1	0.0	0.0	2,764
M	0.0	0.0	0.0	0.0	0.0	0.0	0.0	0.0	0.0	0.0	0.0	0.0	
<b>Income</b>													
Q1(poorest)	54.4	5.0	28.0	2.6	13.8	3.4	3.0	1.0	0.7	0.3	0.0	0.0	566
Q2	74.9	3.5	17.8	3.4	5.6	1.3	1.7	0.5	0.0	0.0	0.0	0.0	732
Q3	67.6	4.9	25.5	4.6	6.2	1.1	0.3	0.1	0.5	0.3	0.0	0.0	893
Q4	76.9	4.7	19.0	4.1	3.7	0.9	0.4	0.2	0.0	0.0	0.0	0.0	1,008
Q5(richest)	80.2	3.0	17.0	3.1	2.6	0.5	0.1	0.1	0.0	0.0	0.2	0.1	775
M	73.0	9.2	14.8	5.8	12.2	6.2	0.0	0.0	0.0	0.0	0.0	0.0	19
<b>Age</b>													
18-29	84.4	2.7	12.6	2.5	3.0	1.0	0.0	0.0	0.0	0.0	0.0	0.0	732
30-44	71.1	3.8	21.8	3.4	5.4	0.5	1.3	0.4	0.3	0.1	0.1	0.1	1,286
45-59	71.0	3.8	21.8	3.5	6.1	1.8	0.8	0.3	0.3	0.2	0.0	0.0	1,212
60-69	68.3	4.2	22.3	3.4	8.1	1.6	1.3	0.6	0.0	0.0	0.0	0.0	422
70-79	56.5	3.5	33.8	3.5	8.7	3.4	0.9	0.5	0.1	0.1	0.0	0.0	265
80+	52.8	11.6	29.4	6.2	14.8	8.8	2.5	1.2	0.5	0.5	0.0	0.0	76
M	0.0	0.0	0.0	0.0	0.0	0.0	0.0	0.0	0.0	0.0	0.0	0.0	
All	71.9	3.1	21.1	2.6	5.9	1.0	0.9	0.2	0.2	0.1	0.0	0.0	3,993

## 7.1 Self-reported utilization of health services and perceived unmet need

	<u>Ambulatory Adult</u>		<u>Ambulatory Child</u>		<u>Inpatient Adult</u>		<u>Inpatient Child</u>		<u>Informal Care</u>		<u>Unmet Care</u>		<u>Non use</u>	
	%	SE	%	SE	%	SE	%	SE	%	SE	%	SE	%	SE
<b>Sex</b>														
Female	36.0	3.8	18.4	1.6	2.1	0.5	0.9	0.2	1.5	0.4	0.8	0.3	40.1	3.4
Male	28.3	2.9	15.8	0.9	2.0	0.5	0.4	0.2	2.0	0.6	1.0	0.5	50.5	3.0
<b>Area of Residence</b>														
Urban	22.9	3.6	8.6	1.0	3.1	0.5	1.0	0.2	0.5	0.2	1.2	0.3	62.7	3.9
Rural	36.4	4.1	20.9	1.2	1.6	0.7	0.5	0.2	2.3	0.6	0.8	0.4	37.5	3.3
<b>Age Group</b>														
18-29y	26.4	6.0	17.8	2.3	2.2	1.6	0.6	0.2	1.7	0.6	0.3	0.1	51.0	6.2
30-44y	23.8	2.2	28.1	2.5	0.9	0.2	0.8	0.3	1.9	0.5	1.4	0.6	43.0	3.9
45-59y	38.0	3.2	11.4	1.8	2.0	0.6	0.8	0.6	1.9	0.6	0.4	0.2	45.5	2.9
60-69y	37.3	5.1	10.0	2.4	2.6	0.8	0.2	0.1	1.1	0.6	1.1	0.6	47.8	3.8
70+y	49.7	8.0	3.5	1.8	6.3	1.4	0.2	0.2	1.6	0.6	2.2	0.8	36.6	6.1
<b>Education Years</b>														
0	44.9	6.9	13.6	2.5	2.4	0.9	1.2	0.7	2.2	0.8	1.0	0.6	34.7	5.4
1-5	35.1	1.7	15.4	2.1	1.1	0.4	0.8	0.4	2.6	0.7	1.8	0.8	43.2	3.6
6-11	28.4	3.3	19.9	1.8	2.2	0.6	0.4	0.1	1.7	0.6	0.5	0.2	46.9	2.9
12+	31.3	5.5	14.5	1.8	2.9	1.1	0.7	0.3	0.6	0.2	0.9	0.2	49.0	4.7
<b>Income Quintiles</b>														
Q1	36.1	3.0	18.1	1.5	1.1	0.4	0.3	0.2	4.1	2.1	1.2	0.6	39.0	3.3
Q2	29.9	3.2	14.9	2.5	1.9	0.8	0.4	0.3	2.7	0.6	1.8	0.7	48.5	5.1
Q3	24.8	3.2	15.8	1.9	3.7	0.7	0.3	0.2	0.7	0.4	0.8	0.5	53.8	4.0
Q4	31.7	4.4	17.6	2.1	2.2	0.8	1.3	0.7	1.5	0.8	0.5	0.3	45.2	3.4
Q5	40.4	4.4	19.8	2.5	1.1	0.3	0.7	0.2	0.6	0.3	0.5	0.1	37.0	3.4
<b>Ownership</b>														
Government	53.2	3.4	28.0	1.9	3.9	1.1	1.0	0.3	2.5	0.6	0.7	0.3	10.7	1.3
Private	68.2	6.3	19.6	4.9	0.3	0.3	0.1	0.1	1.7	0.8	1.6	1.5	8.4	2.5
NGO	34.2	9.7	22.1	11.2	0.0	0.0	5.4	5.1	6.1	3.4	0.0	0.0	32.2	13.0
Other	47.1	17.5	29.9	22.2	17.0	9.0	0.0	0.0	3.7	3.8	0.0	0.0	2.3	2.3
TOTAL	32.2	3.2	17.1	1.2	2.1	0.5	0.6	0.2	1.8	0.4	0.9	0.3	45.2	3.0

This table presents the percent of people reporting utilization of health services when they last needed care. It combines information from Q7000, Q7001 and Q7016. Utilization was recorded in the WHS in three separate categories: ambulatory care, hospital inpatient care, and informal care. Time cut-offs for utilization recall used here are 1 year for ambulatory care and informal care, and 3 years for hospital inpatient care. Utilization of ambulatory and inpatient care services

have been further sub-divided into "adult" and "child" categories. In addition to utilization, two other related aspects are being reported here - unmet need and non-use (regardless of expressed need) of health services. Unmet need was estimated on the basis of responses to Q7000 and Q7004. Non-use of health services is simply the percent of respondents who reported no need in Q7000 or did not utilize services in the time cut-offs mentioned above.

Results are reported for the total WHS sample (category: "TOTAL"), and by the following sample sub-groups: sex, area of residence, age group, years of education, income quintiles, and ownership (of health facility). Mean values and standard errors (SE) are reported for each category.

Sub-groups common to other tables were constructed in the same manner. Common sub-groups include sex (Q1001), area of residence (Q0104), age group (regrouping of reported age in Q1002), years of education (Q1010) and income quintiles. To determine income and subsequently income quintiles, an asset index was constructed for each household using responses to section 0700 on "Permanent Income Indicators" from the WHS household questionnaire.

Ownership was constructed uniquely for the responsiveness section's tables. There are four categories of ownership: "Operated by the government" (Government), "Privately operated" (Private), "NGO" and "Other". To construct the ownership sub-group, information was combined from (a) Q7204, Q7205 and Q7301 for those utilizing ambulatory services, and (b) Q7200, Q7201 and Q7401 for those utilizing hospital inpatient services.

## 7.2 Patient assessed characteristics of ambulatory health services

	Patients visiting a medical doctor, of those visiting any health care provider		Patients rating characteristics of health care provider as adequate/more than adequate						Mean time taken to reach health facility (in minutes)		Patients using private car or motorcycle to reach facility		Mean cost for an ambulatory care visit (local currency)		Percent of population perceiving discrimination	
	%	SE	%	SE	%	SE	%	SE	Minutes	SE	%	SE	mean cost	SE	%	SE
<b>Sex</b>																
Female	92.6	1.0	97.4	1.1	93.4	1.9	96.7	1.2	19.0	1.3	25.4	2.7	163.7	19.6	5.6	2.1
Male	95.9	1.2	95.9	0.6	92.0	2.3	95.3	1.2	17.5	1.2	37.4	4.7	165.3	30.2	7.0	2.1
<b>Area of Residence</b>																
Urban	91.3	1.5	95.7	1.1	92.4	2.4	95.7	1.4	19.6	1.3	10.1	2.9	406.6	53.4	8.4	3.2
Rural	94.6	1.1	96.9	1.0	92.8	2.3	96.2	1.4	18.1	1.4	35.1	3.9	111.5	15.1	5.8	2.0
<b>Age Group</b>																
18-29y	88.5	3.9	96.1	2.2	92.3	4.1	95.9	2.5	20.4	2.7	45.2	5.4	93.9	14.4	5.3	3.2
30-44y	94.9	1.3	97.6	1.0	94.3	1.6	97.6	1.0	17.2	1.3	27.2	5.0	170.5	31.0	4.8	1.5
45-59y	94.4	1.1	96.0	1.0	91.9	2.5	95.6	1.2	18.0	1.4	35.9	3.2	141.2	22.8	5.2	2.1
60-69y	96.5	1.2	95.3	2.3	92.8	2.4	95.6	2.0	20.0	1.9	12.7	3.1	292.2	74.3	16.6	5.6
70+y	97.4	1.3	99.1	0.6	90.4	2.9	92.4	3.7	18.9	1.9	16.9	5.9	201.9	49.4	5.1	2.7
<b>Education Years</b>																
0	96.3	1.6	96.5	1.8	88.1	4.1	93.1	2.6	20.2	1.8	14.0	3.8	162.9	32.0	13.9	3.8
1-5	95.4	1.7	98.0	0.6	93.4	2.0	96.0	1.2	19.2	1.4	22.8	2.3	152.7	32.4	6.3	2.2
6-11	93.6	1.3	96.6	1.1	92.6	2.8	96.2	1.3	17.8	1.4	38.9	5.1	150.1	21.8	5.0	1.7
12+	91.6	2.4	95.5	1.6	96.3	2.1	98.6	0.5	17.0	1.6	33.4	4.8	221.1	55.8	3.2	2.2
<b>Income Quintiles</b>																
Q1	93.6	2.6	94.1	2.4	86.4	4.1	91.9	2.8	21.3	2.1	8.3	3.2	107.9	15.3	13.5	4.9
Q2	94.3	1.1	96.1	0.8	86.1	3.7	91.3	2.5	19.1	1.2	12.2	3.1	135.4	22.8	6.7	3.3
Q3	93.3	1.2	97.7	0.6	96.1	1.2	97.2	1.2	19.1	2.1	35.9	4.4	237.0	53.9	9.3	2.2
Q4	92.4	2.8	98.1	0.9	95.5	2.5	98.3	0.8	17.6	1.6	40.6	4.8	152.6	24.4	2.7	1.5
Q5	96.5	1.0	96.7	0.8	96.2	1.8	99.2	0.2	16.0	1.5	45.3	5.8	185.6	37.1	2.1	1.0
<b>Condition</b>																
Child-Visit	96.3	1.7	98.8	0.9	95.8	2.3	96.7	2.4	17.1	1.6	36.8	9.0	123.9	19.1	7.5	3.4
Preventive	97.3	1.3	97.2	2.2	96.3	2.8	96.3	2.8	15.5	2.6	33.8	15.0	105.3	28.4	8.4	6.0
Childbirth	96.7	1.0	98.9	0.4	94.8	1.8	97.6	1.3	15.6	1.2	34.1	5.4	120.4	19.0	2.2	0.9
Acute	100.0	0.0	93.0	5.1	90.9	5.4	93.0	5.1	20.5	2.9	50.6	5.5	239.4	47.5	13.9	6.0
Injury	95.1	2.9	97.8	1.4	85.0	4.9	86.0	5.1	20.5	3.2	25.2	9.7	205.3	69.4	10.8	3.5
Chronic	90.4	2.1	95.7	1.3	91.9	2.6	96.6	0.9	20.4	1.6	28.1	3.3	195.6	31.0	6.5	1.6

	Patients visiting a medical doctor, of those visiting any health care provider		Patients rating characteristics of health care provider as adequate/more than adequate						Mean time taken to reach health facility (in minutes)		Patients using private car or motorcycle to reach facility		Mean cost for an ambulatory care visit (local currency)		Percent of population perceiving discrimination	
	%	SE	%	SE	%	SE	%	SE	Minutes	SE	%	SE	mean cost	SE	%	SE
Other																
<b>Ownership</b>																
Government	95.5	1.5	97.8	0.5	95.2	1.2	96.9	0.9	18.9	1.2	33.0	3.2	169.2	18.0	5.3	1.6
Private	87.9	1.9	90.4	3.2	82.2	7.0	93.1	2.5	14.6	1.3	20.8	6.8	112.7	31.4	9.3	2.2
NGO	79.5	18.0	100.0	0.0	69.0	19.9	96.5	2.9	20.8	2.7	0.0	0.0	474.6	339.0	23.7	17.0
Other	60.8	24.1	91.7	6.4	49.0	18.0	59.5	26.4	22.1	4.6	0.0	0.0	170.2	54.3	36.0	24.8
<b>Self-Assessed Health</b>																
Very-Good	95.2	2.2	98.4	0.8	96.5	1.3	98.7	0.7	18.1	1.6	43.8	6.3	134.0	24.5	6.9	3.9
Good	92.7	1.4	96.1	1.3	94.8	2.0	96.7	1.0	16.9	1.4	32.6	3.5	162.8	30.1	4.7	1.7
Moderate	94.3	1.1	97.4	1.1	90.7	2.6	96.7	0.9	18.7	1.2	25.7	2.1	166.5	22.2	6.5	2.4
Bad	97.1	1.9	96.1	2.1	90.8	2.9	92.0	4.5	21.5	4.3	18.7	4.9	199.2	46.2	10.1	2.9
Very-Bad	100.0	0.0	73.8	17.0	37.1	17.5	37.1	17.5	40.4	6.8	2.9	2.9	368.8	278.4	16.9	13.5
TOTAL	94.1	1.0	96.7	0.8	92.8	2.0	96.1	1.2	18.3	1.2	30.7	3.2	164.4	17.4	6.2	1.7

This table looks at various characteristics of a visit to an ambulatory care facility, for those who utilized such services in the previous 12 months (Q7204 and Q7205). Characteristics of a visit reported here include:

- (1) The percent of patients visiting a medical doctor (of those visiting any ambulatory provider) (Q7302).
- (2) Patients' rating of *skills*, *equipment*, and *drug supplies* of the provider as "adequate": percent of patients who reported "Yes" to questions Q7304, Q7305 and Q7306, respectively.
- (3) Barriers or facilitators to care access have been reported here for those who utilized ambulatory care services in the last 12 months. They include:
  - (a) *Mean time taken to reach facility*: patient reported times from Q7307 were used to calculate averages across sample sub-groups.
  - (b) *Patients using private motor vehicles*: percent of patients who reported using a "private car or motorcycle" to get to the facility in Q7308.
  - (c) *Mean cost of visit*: patient reported costs in Q7309-Q7313 were summed up for an individual and then averaged across sample sub-groups.
  - (d) *Perceived discrimination*: percent of patients who reported "Yes" to any form of discrimination listed in Q7328-Q7334.

Results are reported for the total WHS sample (category: "TOTAL"), and by the following sample sub-groups: sex, area of residence, age group, years of education, income quintiles, reason for seeking care (condition), ownership (of health facility), and self-assessed health. Mean values and standard errors (SE) are reported for each category.

Sub-groups common to other tables were constructed in the same manner. Common sub-groups include: sex (Q1001), area of residence (Q0104), age group (regrouping of reported age in Q1002), years of education (Q1010) and income quintiles. To determine income and subsequently income quintiles, an asset index was constructed for each household using responses to section 0700 on "Permanent Income Indicators" from the WHS household questionnaire.

Ownership, condition and self-assessed health sub-groups were constructed uniquely for the responsiveness section's tables. There are four categories of ownership: "Operated by the government" (Government), "Privately operated" (Private), "NGO" and "Other". To construct the ownership sub-group, information was combined from (a) Q7204, Q7205 and Q7301 for those utilizing ambulatory services, and (b) Q7200, Q7201 and Q7401 for those utilizing hospital inpatient services. The sub-group "Condition" used and regrouped information from Q7003 ("Which reason best describes why you [your child] last needed health care?") into 6 categories. The six categories include preventive care (immunization, antenatal consultation and family planning); childbirth; acute conditions (high fever, severe diarrhoea, or cough); injury; chronic conditions (arthritis, asthma and heart disease); and other (dental care, minor surgery and other). Self-assessed health was constructed using information from Q2000 ("In general, how would you rate your health today as?") in the WHS. Respondents could select one of the

following five categories: "Very good", "Good", "Moderate", "Bad" and "Very bad".

### 7.3.1 Patient assessment of responsiveness domains for ambulatory services: percent reporting "Moderate", "Bad" or "Very bad" - 1

	Prompt Attention				Dignity				Communication			
	Travel Time		Wait Time		Talked Respectfully		Privacy		Clear Explanation		Time for Questions	
	%	SE	%	SE	%	SE	%	SE	%	SE	%	SE
<b>Sex</b>												
Female	55.9	5.4	35.4	3.2	27.1	5.7	39.9	6.3	35.6	4.4	46.7	7.0
Male	47.7	5.9	32.1	4.1	22.6	3.1	34.3	4.4	31.6	4.6	42.1	6.4
<b>Area of Residence</b>												
Urban	45.0	4.4	42.1	3.8	36.6	4.6	47.3	3.1	37.9	3.7	44.1	3.0
Rural	53.8	6.3	32.2	2.8	22.7	4.0	35.4	5.1	33.0	5.0	44.8	7.5
<b>Age Group</b>												
18-29y	60.1	3.6	38.1	5.8	27.0	6.4	36.1	4.8	28.1	2.8	42.3	4.6
30-44y	49.3	6.4	31.9	3.6	25.7	4.9	34.6	6.2	36.9	6.1	47.8	6.2
45-59y	54.4	5.3	33.9	4.7	24.1	4.7	40.7	4.2	34.2	6.3	41.8	7.8
60-69y	44.5	8.6	26.2	3.6	23.0	4.5	39.1	2.8	30.8	5.6	47.5	7.6
70+y	49.4	7.3	45.5	12.7	25.9	4.0	36.0	10.6	33.7	9.8	44.4	10.9
<b>Education Years</b>												
0	46.1	10.1	26.6	8.5	20.9	3.5	39.8	9.0	33.3	4.8	44.1	7.1
1-5	49.0	5.8	31.1	4.0	22.7	5.0	39.7	4.6	29.3	4.1	42.8	5.1
6-11	55.9	4.7	34.8	2.7	25.6	5.0	34.5	5.6	36.5	6.5	48.0	9.3
12+	51.8	6.8	41.4	5.1	30.7	8.2	40.2	3.4	33.6	4.9	39.2	4.0
<b>Income Quintiles</b>												
Q1	49.3	10.5	24.1	5.1	22.5	4.7	37.0	8.6	36.1	6.1	46.5	7.6
Q2	36.5	8.9	22.1	7.0	21.8	4.4	34.8	7.7	28.6	4.7	42.6	3.5
Q3	53.7	5.9	35.6	5.7	28.2	3.1	43.3	4.0	35.0	5.8	49.0	5.1
Q4	60.2	3.3	39.3	4.7	27.5	6.1	40.1	4.1	35.2	7.2	39.3	8.1
Q5	54.9	6.8	41.6	5.5	24.4	5.5	32.3	5.1	33.8	5.5	47.5	11.9
<b>Condition</b>												
Child-Visit	43.2	7.0	25.0	4.6	23.7	3.0	34.9	3.8	26.3	4.7	38.6	5.4
Preventive	62.8	8.6	39.8	7.2	25.3	14.0	34.9	11.1	27.6	17.9	42.0	11.8
Childbirth	48.7	5.1	27.1	2.6	20.5	2.1	30.4	3.9	29.6	4.7	42.7	6.7
Acute	70.7	10.2	61.0	8.6	40.1	12.0	49.7	11.8	26.1	7.4	32.2	8.3
Injury	59.3	7.1	28.0	7.2	21.7	5.1	37.5	11.4	29.2	6.3	37.6	3.8
Chronic	53.0	6.6	37.4	3.7	28.4	3.8	42.8	5.1	37.5	4.8	49.3	8.7
Other												
<b>Ownership</b>												
Government	52.4	5.1	36.0	2.6	25.6	4.0	36.0	4.8	33.6	4.4	43.9	5.7
Private	52.2	7.1	22.0	2.5	22.2	2.7	45.7	7.3	36.5	6.8	49.1	11.5
NGO	58.0	18.4	48.7	17.7	12.3	9.6	45.6	13.0	26.6	14.5	37.1	14.0
Other	16.5	8.6	11.3	7.7	53.2	23.5	27.6	16.4	19.7	9.8	62.3	15.6
<b>Self-Assessed Health</b>												
Very-Good	49.4	4.1	30.2	6.6	19.4	3.2	34.4	6.3	22.7	2.3	32.1	7.9
Good	49.0	5.0	33.6	3.4	26.9	5.2	35.9	6.2	35.9	4.5	45.0	5.0
Moderate	56.2	7.5	37.2	2.6	25.2	4.2	39.9	5.6	35.8	6.8	48.3	9.0
Bad	51.7	7.2	30.9	8.4	27.2	8.4	40.3	10.5	38.8	8.4	51.8	6.7
Very-Bad	88.0	6.9	19.1	13.7	32.7	18.2	38.5	21.4	34.2	18.4	64.8	18.1
TOTAL	52.2	5.2	33.9	2.6	25.1	3.6	37.4	4.4	33.8	4.2	44.7	6.2

The following table reports the percent of people perceiving poor responsiveness in ambulatory care facilities, where "poor" is defined as a rating of "Moderate", "Bad" or "Very bad" in Q7315-Q7327 which have 5 response options (including "Good" and "Very good"). Ratings for each of the seven domains of ambulatory care responsiveness (including 13 questions) by patients have been presented here. There are two questions each for six of the seven domains; the domain choice has only one question. The following questions from the survey have been used to determine patient assessment of each responsiveness domain:

- (1) *Prompt attention*: travel time (Q7315) and wait time (Q7316).
- (2) *Dignity*: talked respectfully (Q7317) and privacy (Q7318).
- (3) *Communication*: clear explanation (Q7319) and time for questions (Q7320).
- (4) *Autonomy*: treatment information (Q7321) and involvement (Q7322).
- (5) *Confidentiality*: talk privately (Q7323) and confidentiality of records (Q7324).
- (6) *Choice of health care provider*: Q7325.
- (7) *Basic amenities*: cleanliness (Q7326) and space (Q7327).

Results are reported for the total WHS sample (category: "TOTAL"), and by the following sample sub-groups: sex, area of residence, age group, years of education, income quintiles, reason for visit, ownership (of health facility), and self-assessed health. Mean values and standard errors (SE) are reported for each category.

Sub-groups common to other tables were constructed in the same manner. Common sub-groups include sex (Q1001), area of residence (Q0104), age group (regrouping of reported age in Q1002), years of education (Q1010) and income quintiles. To determine income and subsequently income quintiles, an asset index was constructed for each household using responses to section 0700 on "Permanent Income Indicators" from the WHS household questionnaire.

Ownership, condition and self-assessed health sub-groups were constructed uniquely for the responsiveness section's tables. There are four categories of ownership: "Operated by the government" (Government), "Privately operated" (Private), "NGO" and "Other". To construct the ownership sub-group, information was combined from (a) Q7204, Q7205 and Q7301 for those utilizing ambulatory services, and (b) Q7200, Q7201 and Q7401 for those utilizing hospital inpatient services. The sub-group "Condition" used and regrouped information from Q7003 ("Which reason best describes why you [your child] last needed health care?") into 6 categories. The six categories include preventive care (immunization, antenatal consultation and family planning); childbirth; acute conditions (high fever, severe diarrhoea, or cough); injury; chronic conditions (arthritis, asthma and heart disease); and other (dental care, minor surgery and other). Self-assessed health was constructed using information from Q2000 ("In general, how would you rate your health today as?") in the WHS. Respondents were asked to select one of the following five categories: "Very good", "Good", "Moderate", "Bad" and "Very bad".



### 7.3.2 Patient assessment of responsiveness domains for ambulatory services: percent reporting "Moderate", "Bad" or "Very bad" - 2

	Autonomy				Confidentiality				Choice of Healthcare Provider		Basic Amenities			
	Treatment Information		Involvement		Talk Privately		Confidentiality of Records		%	SE	Cleanliness		Space	
	%	SE	%	SE	%	SE	%	SE			%	SE	%	SE
<b>Sex</b>														
Female	57.9	6.8	62.9	7.5	46.9	6.0	48.1	6.7	36.6	4.3	59.2	5.7	62.1	4.0
Male	55.3	7.5	56.7	4.1	44.8	3.1	42.3	3.8	30.2	2.2	51.3	5.2	55.8	6.4
<b>Area of Residence</b>														
Urban	59.3	3.4	61.2	3.8	52.3	4.4	56.1	4.5	46.6	3.6	51.3	4.7	55.9	4.0
Rural	56.2	8.3	59.9	7.0	44.6	5.5	43.3	6.1	31.1	2.9	56.6	6.2	60.0	5.4
<b>Age Group</b>														
18-29y	46.6	6.7	55.2	4.3	44.3	4.8	40.1	9.9	19.4	4.3	54.3	4.0	50.4	2.4
30-44y	61.0	5.4	61.1	6.0	50.7	6.1	49.7	6.2	38.0	3.5	56.6	7.1	58.6	5.6
45-59y	59.3	10.6	61.6	9.2	41.6	5.6	44.0	5.4	34.3	3.6	56.7	7.1	62.1	9.4
60-69y	45.7	6.0	56.4	9.8	45.3	7.6	47.4	6.6	42.0	4.9	51.7	4.5	61.5	4.0
70+y	61.0	12.0	64.1	8.5	48.2	6.1	41.5	7.0	30.0	4.6	55.1	4.5	65.6	3.9
<b>Education Years</b>														
0	61.0	6.4	65.6	8.7	49.8	7.4	45.0	7.2	34.6	4.0	51.8	4.3	59.5	4.0
1-5	58.4	8.0	60.1	5.7	44.5	4.8	51.9	5.2	30.0	4.0	55.4	4.9	62.5	6.0
6-11	55.9	8.0	57.9	7.6	45.3	5.9	42.9	6.0	33.4	5.2	58.8	9.2	58.4	7.3
12+	53.4	7.8	62.0	3.3	47.1	7.5	44.1	10.1	39.3	5.2	51.0	3.3	56.7	3.0
<b>Income Quintiles</b>														
Q1	54.6	8.9	62.2	7.8	52.5	9.0	52.4	7.9	33.2	2.8	64.0	9.0	61.0	6.8
Q2	55.1	4.6	61.3	4.4	45.4	6.1	44.6	9.8	31.3	4.4	53.2	6.0	61.0	4.9
Q3	60.3	8.9	57.5	4.7	45.1	3.3	44.9	4.4	32.1	6.0	61.2	6.8	61.3	6.1
Q4	61.1	10.9	65.0	10.4	49.5	7.0	51.6	6.4	36.8	2.8	55.9	4.4	62.3	3.2
Q5	52.2	10.8	55.2	8.6	39.0	6.9	35.6	9.4	32.9	4.5	47.0	6.7	51.9	9.1
<b>Condition</b>														
Child-Visit	58.7	8.3	49.3	4.4	43.4	3.9	42.7	5.6	29.5	2.8	56.2	3.6	56.9	2.8
Preventive	47.4	12.9	58.6	11.3	34.4	14.4	34.6	14.7	38.8	14.9	59.5	13.7	59.5	13.6
Childbirth	56.1	7.3	56.0	5.3	44.6	3.0	44.6	6.5	28.0	3.7	58.4	5.3	60.2	3.4
Acute	59.6	11.3	56.8	12.5	44.5	13.2	56.9	14.0	32.1	10.4	53.2	14.4	35.9	9.4
Injury	55.7	5.5	62.7	5.7	52.6	7.6	52.8	9.6	34.2	4.6	50.4	10.6	62.5	7.8
Chronic	57.4	8.9	64.1	8.1	46.3	5.9	44.2	4.6	37.9	3.2	54.9	5.2	59.1	6.3
Other														
<b>Ownership</b>														
Government	55.5	6.4	58.4	5.5	44.8	5.0	44.0	6.1	33.9	2.9	53.2	5.4	56.1	4.1
Private	62.9	10.4	70.0	8.8	53.1	5.4	53.1	6.0	30.3	4.0	66.6	10.0	76.3	11.8
NGO	65.5	16.7	53.7	12.2	46.9	14.9	76.4	11.1	56.3	14.6	83.9	9.1	69.0	16.5
Other	76.5	15.2	71.3	15.2	28.2	16.3	31.4	17.3	47.0	21.6	91.8	5.0	80.7	12.4
<b>Self-Assessed Health</b>														
Very-Good	48.9	10.0	49.3	8.4	40.3	4.7	40.0	5.3	22.9	6.3	49.5	8.2	49.9	7.0
Good	59.4	4.9	60.3	4.0	45.7	5.8	45.6	7.5	32.5	4.4	53.9	5.7	56.6	3.8
Moderate	54.4	9.3	62.2	10.2	47.1	6.2	45.6	6.4	39.3	3.5	61.1	7.0	65.4	6.4
Bad	70.2	5.4	72.3	6.8	55.7	7.0	57.5	10.2	37.5	5.4	56.9	10.0	64.6	7.0
Very-Bad	67.0	18.0	71.3	17.1	38.5	21.4	44.2	25.0	37.7	21.4	34.6	18.6	68.1	17.0
TOTAL	56.7	6.9	60.1	5.8	46.0	4.6	45.5	5.3	33.7	2.7	55.7	5.1	59.3	4.5

The following table reports the percent of people perceiving poor responsiveness in ambulatory care facilities, where "poor" is defined as a rating of "Moderate", "Bad" or "Very bad" in Q7315-Q7327 which have 5 response options (including "Good" and "Very good"). Ratings for each of the seven domains of ambulatory care responsiveness (including 13 questions) by patients have been presented here. There are two questions each for six of the seven domains; the domain choice has only one question. The following questions from the survey have been used to determine patient assessment of each responsiveness domain:

- (1) *Prompt attention*: travel time (Q7315) and wait time (Q7316).
- (2) *Dignity*: talked respectfully (Q7317) and privacy (Q7318).
- (3) *Communication*: clear explanation (Q7319) and time for questions (Q7320).
- (4) *Autonomy*: treatment information (Q7321) and involvement (Q7322).
- (5) *Confidentiality*: talk privately (Q7323) and confidentiality of records (Q7324).
- (6) *Choice of health care provider*: Q7325.
- (7) *Basic amenities*: cleanliness (Q7326) and space (Q7327).

Results are reported for the total WHS sample (category: "TOTAL"), and by the following sample sub-groups: sex, area of residence, age group, years of education, income quintiles, reason for visit, ownership (of health facility), and self-assessed health. Mean values and standard errors (SE) are reported for each category.

Sub-groups common to other tables were constructed in the same manner. Common sub-groups include sex (Q1001), area of residence (Q0104), age group (regrouping of reported age in Q1002), years of education (Q1010) and income quintiles. To determine income and subsequently income quintiles, an asset index was constructed for each household using responses to section 0700 on "Permanent Income Indicators" from the WHS household questionnaire.

Ownership, condition and self-assessed health sub-groups were constructed uniquely for the responsiveness section's tables. There are four categories of ownership: "Operated by the government" (Government), "Privately operated" (Private), "NGO" and "Other". To construct the ownership sub-group, information was combined from (a) Q7204, Q7205 and Q7301 for those utilizing ambulatory services, and (b) Q7200, Q7201 and Q7401 for those utilizing hospital inpatient services. The sub-group "Condition" used and regrouped information from Q7003 ("Which reason best describes why you [your child] last needed health care?") into 6 categories. The six categories include preventive care (immunization, antenatal consultation and family planning); childbirth; acute conditions (high fever, severe diarrhoea, or cough); injury; chronic conditions (arthritis, asthma and heart disease); and other (dental care, minor surgery and other). Self-assessed health was constructed using information from Q2000 ("In general, how would you rate your health today as?") in the WHS. Respondents were asked to select one of the following five categories: "Very good", "Good", "Moderate", "Bad" and "Very bad".

## 7.4 Patient assessed characteristics of hospital inpatient health services

	Patients staying for more than 6 days on last hospital visit		Patients rating characteristics of health care provider as adequate / more than adequate				Mean time taken to reach health facility (in minutes)		Patients using private car or motorcycle to reach facility		Patients waiting more than a month to be admitted		Mean number of patients sleeping in the same room		Mean cost for a hospital visit		Percent of population perceiving discrimination			
	%	SE	%	SE	%	SE	%	SE	Minutes	SE	%	SE	%	SE	No	SE	mean cost	SE	%	SE
Sex																				
Female	77.0	4.5	95.9	1.4	97.1	1.7	96.1	2.2	34.5	4.2	45.6	7.7	0.1	0.1	3.2	0.6	4,778.3	1,527.5	8.4	3.0
Male	85.1	3.2	97.8	1.0	96.9	1.4	98.0	0.9	34.0	4.0	34.1	7.1	0.2	0.2	3.7	0.7	5,176.7	681.3	17.5	4.7
Area of Residence																				
Urban	82.2	3.4	96.3	1.1	95.3	1.4	94.8	1.6	23.7	4.5	24.6	3.9	0.0	0.0	2.9	0.7	4,497.0	697.4	15.9	1.6
Rural	79.7	4.3	96.9	1.1	97.8	1.4	97.8	1.4	38.9	3.6	47.9	9.6	0.2	0.2	3.6	0.6	5,202.6	1,208.3	10.6	4.7
Age Group																				
18-29y	84.1	5.0	99.6	0.4	99.6	0.4	99.6	0.4	29.6	5.4	64.7	11.5	0.0	0.0	3.5	0.9	4,226.8	812.9	6.9	4.5
30-44y	70.8	6.5	98.8	1.0	98.8	0.7	98.4	0.8	43.0	7.8	31.7	6.2	0.3	0.3	3.4	0.7	2,759.9	380.9	11.7	4.7
45-59y	84.7	3.1	95.5	2.9	95.4	3.0	94.0	3.1	36.5	5.8	26.2	6.5	0.2	0.2	3.5	0.8	8,052.2	2,523.0	15.5	6.1
60-69y	83.2	7.6	93.5	3.1	93.4	3.7	95.1	3.0	29.6	4.5	40.9	9.5	0.0	0.0	3.3	0.8	4,908.1	1,002.4	17.1	5.4
70+y	82.5	5.5	94.6	2.7	96.9	1.8	98.1	1.9	24.0	3.7	55.4	13.8	0.0	0.0	3.1	1.0	3,084.2	481.0	9.5	5.7
Education Years																				
0	92.2	4.4	96.2	1.3	98.1	1.7	98.1	1.7	38.5	5.4	41.8	11.3	0.0	0.0	2.7	0.7	2,707.8	468.1	18.6	11.2
1-5	73.8	5.6	96.3	1.8	97.0	1.6	98.0	1.3	38.0	7.5	38.9	13.3	0.2	0.2	3.6	0.7	2,743.2	406.6	11.5	3.0
6-11	80.5	3.3	97.3	2.0	96.6	2.0	96.1	2.4	35.4	3.9	41.7	3.2	0.2	0.2	3.6	0.7	6,889.9	1,733.3	13.1	3.6
12+	81.3	4.9	96.4	1.4	97.3	1.0	96.5	1.1	24.6	3.2	40.6	13.6	0.0	0.0	3.1	0.8	4,760.7	626.5	7.6	2.0
Income Quintiles																				
Q1	74.8	9.2	92.6	2.7	93.5	2.6	93.5	2.6	55.9	15.6	8.7	2.8	1.0	1.1	3.3	0.7	2,940.8	777.0	18.3	7.4
Q2	76.6	3.6	99.6	0.4	98.8	0.8	99.6	0.4	37.4	4.7	32.4	9.2	0.0	0.0	3.7	0.6	3,933.1	458.4	16.3	6.4
Q3	81.3	3.8	96.1	2.9	97.8	1.2	98.8	1.2	35.3	6.7	34.7	5.7	0.0	0.0	3.2	0.7	8,688.4	4,405.6	10.3	4.2
Q4	84.3	4.4	96.4	3.1	96.1	3.2	94.8	3.3	29.7	3.5	54.4	6.3	0.0	0.0	3.3	0.7	3,591.2	431.2	13.5	3.5
Q5	81.1	6.8	97.3	1.6	98.1	1.4	97.4	1.5	22.1	2.5	58.6	14.5	0.0	0.0	3.3	0.9	5,962.8	1,555.1	3.2	1.7
Condition																				
Child-Visit	67.9	10.7	96.6	3.5	96.2	3.5	95.7	3.6	42.2	6.4	28.0	9.7	0.0	0.0	3.3	0.8	1,649.3	348.9	13.2	6.7
Fever	63.7	8.4	95.2	3.5	94.3	3.7	96.1	3.1	27.7	3.8	23.2	7.0	0.0	0.0	3.2	0.8	1,921.1	313.9	20.6	5.2
Childbirth	74.9	9.8	100.0	0.0	100.0	0.0	100.0	0.0	21.8	2.9	76.7	10.1	0.0	0.0	3.1	1.0	2,551.1	627.4	5.0	5.1
Arthritis	83.0	14.6	54.3	22.7	54.3	22.7	54.3	22.7	29.9	7.5	46.5	19.8	0.0	0.0	2.9	0.7	3,045.1	805.2	11.4	7.9
Asthma	61.8	26.3	95.4	3.7	95.4	3.7	95.4	3.7	20.2	2.2	6.5	7.3	0.0	0.0	2.7	0.8	1,417.3	747.8	15.0	9.7
Heart-Disease	61.9	16.6	90.9	8.3	97.1	3.1	100.0	0.0	22.7	4.1	46.6	16.3	0.0	0.0	3.3	0.7	4,063.8	1,428.6	6.2	5.0
Injury	90.7	3.4	100.0	0.0	100.0	0.0	100.0	0.0	26.1	2.6	30.2	8.5	0.5	0.5	3.4	0.8	5,708.8	1,244.5	7.6	3.4
Minor-Surgery	95.5	3.1	100.0	0.0	100.0	0.0	100.0	0.0	38.6	5.4	41.6	12.8	0.0	0.0	4.1	1.0	3,373.4	1,112.2	5.6	3.8
Other	83.7	4.3	97.7	1.0	97.8	1.0	96.6	1.4	43.6	7.4	36.1	8.0	0.2	0.2	3.4	0.7	6,991.8	2,270.7	16.0	4.4
Ownership																				
Government	80.6	3.1	96.6	0.9	97.2	1.1	96.8	1.3	34.3	3.3	41.8	7.3	0.1	0.1	3.4	0.6	5,056.8	836.0	11.9	3.4
Private	94.8	6.4	100.0	0.0	100.0	0.0	100.0	0.0	36.5	12.6	0.0	0.0	0.0	0.0	1.6	1.0	678.7	339.4	0.0	0.0
NGO	94.6	6.3	100.0	0.0	100.0	0.0	100.0	0.0	30.1	9.7	0.0	0.0	0.0	0.0	6.3	1.7	2,189.4	1,490.2	67.0	16.4
Other	100.0	0.0	100.0	0.0	0.0	0.0	100.0	0.0	30.5	0.5	0.0	0.0	0.0	0.0	0.5	0.5	1,900.5	0.5	100.0	0.0
Self-Assessed Health																				
Very-Good	84.7	5.0	100.0	0.0	99.7	0.3	99.7	0.3	28.0	3.5	61.0	12.3	0.0	0.0	3.8	0.9	3,345.2	990.4	8.7	6.1
Good	71.3	4.4	98.5	1.2	98.9	1.1	96.9	1.7	30.6	3.9	35.6	4.6	0.2	0.2	3.0	0.7	3,956.1	555.2	11.4	4.1
Moderate	84.6	3.6	98.0	1.0	98.3	0.6	98.4	0.8	32.8	3.1	41.4	10.4	0.0	0.0	3.5	0.7	5,649.1	2,755.0	12.8	5.8
Bad	87.6	4.2	87.7	4.4	87.9	5.9	90.8	5.5	39.2	7.4	34.6	6.7	0.3	0.3	3.5	0.7	6,498.3	992.9	12.4	5.8
Very-Bad	53.0	19.5	94.8	5.6	100.0	0.0	100.0	0.0	161.1	127.7	32.8	17.1	0.0	0.0	3.2	1.0	9,272.0	4,173.4	48.8	14.4
TOTAL	80.4	3.1	96.7	0.9	97.0	1.1	96.9	1.2	34.2	3.2	40.7	7.1	0.1	0.1	3.4	0.6	4,952.2	809.6	12.3	3.3

This table looks at various characteristics of a visit to a hospital inpatient care facility, for those who utilized such services in the past 3 years (Q7200, Q7201 and Q7402). Characteristics of a visit reported here include:

(1) The percent of patients who stayed 6 days or more at an inpatient facility during their last visit (Q7404).

(2) Patients' rating of *skills, equipment, and drug supplies* of the provider as "adequate": percent of patients who reported "Yes" to questions Q7405, Q7406 and Q7407, respectively.

(3) Barriers or facilitators to care access have been reported here for those who utilized inpatient care services in the last 3 years. They include:

(a) *Mean time taken to reach facility*: patient reported times from Q7408 were used to calculate averages across sample sub-groups.

(b) *Patients using private motor vehicles*: percent of patients who reported using a "private car or motorcycle" to get to the facility in Q7409.

(c) *Patients waiting more than a month to be admitted*: percent of patients who reported waiting more than a month to be admitted in Q7410.

(d) *Mean number of patients sleeping in same room*: averages across sample sub-groups have been constructed for numbers reported in Q7417.

(e) *Mean cost of visit*: patient reported costs in Q7411-Q7415 were summed up for an individual and then averaged across sample sub-groups.

(f) *Perceived discrimination*: percent of patients who reported "Yes" to any form of discrimination asked in Q7433-Q7439.

Results are reported for the total WHS sample (category: "TOTAL"), and by the following sample sub-groups: sex, area of residence, age group, years of education, income quintiles, reason for seeking care (condition), ownership (of health facility), and self-assessed health. Mean values and standard errors (SE) are reported for each category.

Sub-groups common to other tables were constructed in the same manner. Common sub-groups include sex (Q1001), area of residence (Q0104), age group (regrouping of reported age in Q1002), years of education (Q1010) and income quintiles. To determine income and subsequently income quintiles, an asset index was constructed for each household using responses to section 0700 on "Permanent Income Indicators" from the WHS household questionnaire.

Ownership, condition and self-assessed health sub-groups were constructed uniquely for the responsiveness section's tables. There are four categories of ownership: "Operated by the government" (Government), "Privately operated" (Private), "NGO" and "Other". To construct the ownership sub-group, information was combined from (a) Q7204, Q7205 and Q7301 for those utilizing ambulatory services, and (b) Q7200, Q7201 and Q7401 for those utilizing hospital inpatient services. The sub-group "Condition" used information from Q7403 ("Which of the following best describes the reason for your [child's] last overnight stay?"). The eight categories of Q7403 include high fever, diarrhoea, or cough; childbirth; arthritis; asthma; heart disease; bodily injury; minor surgery; and other. Self-assessed health was constructed using information from Q2000 ("In general, how would you rate your health today as?") in the WHS. Respondents were asked to select one of the following five categories: "Very good", "Good", "Moderate", "Bad" and "Very bad".

## 7.5.1 Patient assessment of responsiveness domains for hospital inpatient services: percent reporting "Moderate", "Bad" or "Very bad" - 1

	Prompt Attention				Dignity				Communication				Autonomy			
	Travel Time		Wait Time		Talked Respectfully		Privacy		Clear Explanation		Time for Questions		Treatment Information		Involvement	
	%	SE	%	SE	%	SE	%	SE	%	SE	%	SE	%	SE	%	SE
<b>Sex</b>																
Female	39.4	7.3	18.2	2.6	25.5	4.4	27.4	3.3	31.3	4.8	36.1	2.6	56.2	6.6	62.6	5.3
Male	47.9	6.9	29.9	4.0	22.9	5.5	24.3	4.6	31.6	5.7	42.2	5.7	56.4	7.8	54.2	5.5
<b>Area of Residence</b>																
Urban	42.4	4.6	27.6	3.1	31.6	3.8	37.3	4.2	38.4	2.6	38.2	3.8	57.4	2.9	61.6	2.9
Rural	43.4	8.6	21.2	2.4	21.2	5.7	21.1	4.0	28.3	5.8	38.9	4.5	55.8	10.0	57.9	6.9
<b>Age Group</b>																
18-29y	38.3	5.7	30.2	4.7	16.1	9.8	25.8	8.0	32.5	8.4	32.6	6.6	50.9	10.2	56.4	15.4
30-44y	43.8	4.9	24.5	4.8	25.1	4.9	25.1	6.3	21.9	4.2	38.6	8.9	60.0	7.1	59.9	8.5
45-59y	35.5	9.2	17.7	5.6	20.9	3.9	18.8	4.6	30.4	4.5	34.1	5.2	55.4	9.9	56.4	7.6
60-69y	48.0	7.5	17.2	6.3	43.6	9.4	47.9	9.0	45.0	9.3	52.4	8.6	56.8	7.4	64.3	8.5
70+y	57.9	10.8	27.5	6.2	24.7	3.8	25.1	5.7	38.0	12.1	43.8	6.1	57.4	10.9	61.7	5.4
<b>Education Years</b>																
0	39.2	12.2	20.5	8.7	39.1	12.2	40.9	10.1	33.2	12.8	35.6	4.9	60.7	9.5	68.0	8.1
1-5	40.3	9.0	12.9	2.2	14.7	5.0	11.9	3.3	18.1	7.5	40.7	3.5	53.4	7.2	62.4	5.8
6-11	43.0	3.6	23.7	3.7	24.4	5.2	27.0	4.0	33.3	5.8	35.6	5.2	56.0	7.6	58.7	6.9
12+	48.9	9.7	36.4	5.1	27.1	7.8	32.6	9.6	43.0	5.6	44.3	5.3	58.3	11.4	50.1	5.8
<b>Income Quintiles</b>																
Q1	27.5	5.9	13.0	5.2	16.4	5.7	17.5	6.2	23.8	5.7	42.4	7.6	40.8	4.6	55.2	4.7
Q2	38.0	6.6	29.2	6.4	25.5	7.0	30.6	5.8	35.0	5.4	38.8	4.6	57.9	6.2	61.7	6.5
Q3	48.0	6.4	26.0	6.7	23.0	5.8	17.0	4.8	24.1	7.3	36.0	8.3	54.0	7.6	49.9	6.6
Q4	46.9	9.8	20.3	3.4	34.1	7.9	33.1	5.7	35.1	5.7	36.8	4.5	63.3	11.5	61.4	7.6
Q5	47.7	10.6	24.2	4.4	14.0	4.9	24.9	4.3	33.6	6.3	40.9	6.7	57.5	9.8	63.4	13.4
<b>Condition</b>																
Child-Visit	40.4	6.2	24.7	7.1	29.1	7.9	30.2	10.0	26.0	6.2	37.0	10.3	40.1	7.3	55.7	12.3
Fever	50.5	9.7	31.4	7.5	36.9	5.0	34.2	6.1	23.6	4.8	36.4	7.2	60.0	6.8	62.9	7.6
Childbirth	22.8	7.6	13.6	3.1	13.0	7.6	26.3	7.4	17.6	9.0	22.0	10.5	47.7	11.9	46.1	9.0
Arthritis	9.5	7.9	11.8	11.7	15.9	13.1	43.5	23.1	64.3	21.2	83.0	9.2	83.0	9.2	83.0	9.2
Asthma	80.2	13.6	35.0	16.1	77.0	12.8	44.4	19.0	44.4	19.0	79.8	12.8	79.8	12.8	100.0	0.0
Heart-Disease	59.0	11.8	19.4	9.2	17.2	8.4	16.2	8.2	23.5	9.6	53.9	10.4	72.2	8.6	70.7	8.8
Injury	13.4	6.1	4.9	2.5	8.2	2.8	5.5	2.7	17.5	5.5	33.1	5.8	43.5	6.2	56.4	9.5
Minor-Surgery	47.8	23.6	26.7	8.1	41.5	11.9	28.1	9.9	57.1	20.9	48.7	11.9	63.0	17.8	63.0	17.8
Other	52.5	6.2	28.7	3.9	24.3	5.2	28.3	5.2	34.2	4.3	37.5	5.2	55.2	7.8	57.5	5.3
<b>Ownership</b>																
Government	43.9	6.3	23.6	2.1	24.6	4.2	25.8	3.4	31.6	4.1	39.4	3.5	56.1	7.1	58.5	4.8
Private	0.0	0.0	0.0	0.0	0.0	0.0	32.7	27.2	32.7	27.2	5.2	6.4	37.9	25.4	81.2	13.1
NGO	27.6	16.5	27.6	16.5	27.6	16.5	55.2	33.1	39.4	32.4	0.0	0.0	55.2	33.1	55.2	33.1
Other	0.0	0.0	0.0	0.0	100.0	0.0	100.0	0.0	0.0	0.0	100.0	0.0	100.0	0.0	100.0	0.0
<b>Self-Assessed Health</b>																
Very-Good	38.1	8.5	28.5	7.9	11.8	5.8	24.7	6.0	39.8	6.4	42.1	7.7	52.3	7.3	61.2	13.4
Good	32.5	5.5	19.8	4.1	22.0	7.5	22.1	7.3	23.5	6.6	27.3	8.3	47.6	9.1	49.8	7.0
Moderate	54.7	8.1	23.8	3.4	31.4	4.5	26.0	5.0	34.3	8.4	44.2	3.6	65.6	9.2	61.1	4.7
Bad	38.0	10.0	23.8	6.9	19.4	7.2	33.1	8.1	30.9	7.9	44.0	4.9	54.2	3.7	69.1	6.0
Very-Bad	58.9	11.4	29.8	16.2	52.5	16.5	53.6	20.3	67.8	20.3	55.5	17.0	54.5	14.2	80.6	12.6
TOTAL	43.0	6.2	23.2	2.2	24.4	4.2	26.1	3.4	31.4	4.0	38.6	3.4	56.3	6.9	59.0	4.7

The following table reports the percent of people perceiving poor responsiveness in hospital inpatient care facilities, where "poor" is defined as a rating of "Moderate", "Bad" or "Very bad" in questions Q7418-Q7432 which have 5 response options (including "good" and "very good".. Ratings for each of the eight domains of hospital inpatient care responsiveness (including 15 questions) by patients have been presented here. There are two questions each for seven of the eight domains; the domain of choice has only one question. The following questions from the survey have been used to determine patient assessment of each responsiveness domain:

- (1) *Prompt attention*: travel time (Q7418) and wait time (Q7419).
- (2) *Dignity*: talked respectfully (Q7420) and privacy (Q7421).
- (3) *Communication*: clear explanation (Q7422) and time for questions (Q7423).
- (4) *Autonomy*: treatment information (Q7424) and involvement (Q7425).
- (5) *Confidentiality*: talk privately (Q7426) and confidentiality of records (Q7427).
- (6) *Choice of health care provider*: Q7428.
- (7) *Basic amenities*: cleanliness (Q7429) and space (Q7430).
- (8) *Social support*: family visit (Q7431) and external contact (Q7432).

Results are reported for the total WHS sample (category: "TOTAL"), and by the following sample sub-groups: sex, area of residence, age group, years of education, income quintiles, reason for visit, ownership (of health facility), and self-assessed health. Mean values and standard errors (SE) are reported for each category.

Sub-groups common to other tables were constructed in the same manner. Common sub-groups include sex (Q1001), area of residence (Q0104), age group (regrouping of reported age in Q1002), years of education (Q1010) and income quintiles. To determine income and subsequently income quintiles, an asset index was constructed for each household using responses to section 0700 on "Permanent Income Indicators" from the WHS household questionnaire.

Ownership, condition and self-assessed health sub-groups were constructed uniquely for the responsiveness section's tables. There are four categories of ownership: "Operated by the government" (Government), "Privately operated" (Private), "NGO" and "Other". To construct the ownership sub-group, information was combined from (a) Q7204, Q7205 and Q7301 for those utilizing ambulatory services, and (b) Q7200, Q7201 and Q7401 for those utilizing hospital inpatient services. The sub-group "Condition" used information from Q7403 ("Which of the following best describes the reason for your [child's] last overnight stay?"). The eight categories of Q7403 include high fever, diarrhoea, or cough; childbirth; arthritis; asthma; heart disease; bodily injury; minor surgery; and other. Self-assessed health was constructed using information from Q2000 ("In general, how would you rate your health today as?") in the WHS. Respondents were asked to select one of the following five categories: "Very good", "Good", "Moderate", "Bad" and "Very bad".

## 7.5.2 Patient assessment of responsiveness domains for hospital inpatient services: percent reporting "Moderate", "Bad" or "Very bad" - 2

	Confidentiality				Choice of health care provider		Basic Amenities				Social Support			
	Talk Privately	Confidentiality of records					Cleanliness	Space			Family Visit	External Contact		
	%	SE	%	SE	%	SE	%	SE	%	SE	%	SE	%	SE
<b>Sex</b>														
Female	43.1	5.0	57.0	5.8	38.0	6.0	33.8	4.4	44.7	6.7	22.5	4.1	24.9	4.0
Male	36.3	5.0	56.1	7.7	48.0	5.9	32.3	5.4	44.1	5.8	29.0	4.8	33.0	4.4
<b>Area of Residence</b>														
Urban	50.9	4.0	66.1	6.6	47.7	3.4	48.7	2.1	51.9	1.9	38.9	3.9	41.9	3.6
Rural	35.7	5.6	52.6	8.1	39.9	8.0	26.2	6.6	41.1	8.1	19.2	3.4	22.3	4.6
<b>Age Group</b>														
18-29y	33.3	8.2	50.5	10.3	36.6	5.9	34.3	12.1	34.5	7.9	26.1	9.3	33.8	5.9
30-44y	43.6	8.5	63.1	7.1	46.7	7.2	34.6	6.6	47.0	8.3	23.5	6.2	24.3	7.2
45-59y	35.8	7.8	50.1	8.4	41.8	5.0	27.1	6.5	43.8	7.9	25.0	5.3	27.4	4.7
60-69y	47.0	10.7	65.2	9.0	37.7	9.7	51.1	10.8	59.0	9.6	28.7	7.4	28.7	6.8
70+y	45.4	4.8	58.5	6.0	45.8	12.0	26.8	5.0	41.5	7.4	25.3	7.0	30.4	8.8
<b>Education Years</b>														
0	39.1	5.2	56.1	9.4	38.3	13.1	33.6	17.4	44.4	12.1	19.9	6.8	18.5	6.8
1-5	43.1	7.1	55.6	7.6	40.3	12.9	23.1	6.2	40.7	9.3	19.5	6.6	23.7	4.2
6-11	41.7	5.4	59.7	5.9	37.3	3.2	35.7	6.6	46.7	8.6	28.1	5.1	29.0	4.1
12+	34.3	8.4	52.0	12.9	58.2	8.2	40.3	3.5	44.1	3.0	29.8	8.7	39.1	5.8
<b>Income Quintiles</b>														
Q1	36.0	5.0	63.6	9.4	34.3	7.8	24.7	3.9	36.5	5.5	13.8	4.8	15.4	6.0
Q2	51.9	5.7	59.5	6.6	38.2	6.2	23.6	7.9	39.2	6.6	22.3	5.8	28.5	6.7
Q3	41.6	8.6	61.3	8.5	36.5	9.3	44.2	5.9	41.9	8.9	37.7	8.7	39.7	8.7
Q4	38.6	8.5	58.3	10.9	50.5	6.6	37.9	6.4	53.3	10.7	28.4	5.6	31.3	6.5
Q5	29.4	6.4	39.4	7.6	44.9	12.6	30.4	8.3	43.9	9.2	17.8	3.1	19.8	5.6
<b>Condition</b>														
Child-Visit	50.2	8.2	67.6	9.0	35.0	8.7	38.5	6.3	37.9	9.0	13.0	4.7	14.1	5.0
Fever	51.2	6.2	71.5	7.8	49.5	5.9	44.9	7.4	44.1	8.3	27.5	6.7	33.1	8.0
Childbirth	33.2	9.3	49.3	9.2	34.7	8.2	30.5	8.5	30.0	15.2	16.2	3.6	12.0	4.3
Arthritis	47.2	20.0	78.9	11.1	33.9	23.5	27.2	17.1	27.2	17.1	2.2	2.4	14.0	11.6
Asthma	83.0	13.6	100.0	0.0	47.6	20.5	50.1	21.4	85.5	6.9	33.1	17.5	33.1	17.5
Heart-Disease	54.2	10.9	60.2	6.9	52.4	14.8	32.1	11.2	43.6	14.8	19.5	11.7	20.3	11.8
Injury	38.9	9.5	50.7	9.1	38.8	10.2	24.5	7.3	41.0	7.3	5.5	3.0	15.6	8.0
Minor-Surgery	20.3	10.8	38.0	18.5	50.3	11.3	44.2	13.0	59.6	18.6	10.0	6.6	36.9	16.6
Other	40.6	3.0	57.6	5.6	40.7	5.7	30.3	4.8	46.0	6.0	38.3	4.2	35.5	4.2
<b>Ownership</b>														
Government	40.3	4.5	55.7	6.5	41.9	5.6	32.7	4.8	44.7	5.8	25.0	3.7	27.8	3.8
Private	49.9	27.7	81.2	13.1	5.2	6.4	37.9	25.4	17.2	15.6	5.2	6.4	37.9	25.4
NGO	27.6	16.5	94.6	6.3	94.6	6.3	94.6	6.3	94.6	6.3	94.6	6.3	94.6	6.3
Other	100.0	0.0	100.0	0.0	100.0	0.0	100.0	0.0	0.0	0.0	100.0	0.0	100.0	0.0
<b>Self-Assessed Health</b>														
Very-Good	38.9	7.2	55.4	12.7	37.2	8.5	49.0	13.4	45.6	11.6	22.7	8.2	36.0	7.6
Good	36.1	6.1	57.2	7.0	38.6	5.5	32.3	4.7	41.5	6.6	30.2	5.8	27.2	5.9
Moderate	40.2	10.5	53.7	12.4	49.1	9.4	29.8	3.8	48.2	6.6	23.3	3.8	27.0	4.7
Bad	47.9	10.0	62.3	6.3	37.0	10.6	31.8	11.6	41.1	8.0	22.9	5.2	28.7	5.7
Very-Bad	59.2	14.1	73.9	21.3	41.2	12.4	24.0	14.1	30.9	15.5	13.7	12.5	21.3	13.2
TOTAL	40.2	4.3	56.6	6.4	42.3	5.5	33.1	4.5	44.4	5.6	25.3	3.7	28.3	3.6

The following table reports the percent of people perceiving poor responsiveness in hospital inpatient care facilities, where "poor" is defined as a rating of "Moderate", "Bad" or "Very bad" in questions Q7418-Q7432 which have 5 response options (including "good" and "very good".. Ratings for each of the eight domains of hospital inpatient care responsiveness (including 15 questions) by patients have been presented here. There are two questions each for seven of the eight domains; the domain of choice has only one question. The following questions from the survey have been used to determine patient assessment of each responsiveness domain:

- (1) *Prompt attention*: travel time (Q7418) and wait time (Q7419).
- (2) *Dignity*: talked respectfully (Q7420) and privacy (Q7421).
- (3) *Communication*: clear explanation (Q7422) and time for questions (Q7423).
- (4) *Autonomy*: treatment information (Q7424) and involvement (Q7425).
- (5) *Confidentiality*: talk privately (Q7426) and confidentiality of records (Q7427).
- (6) *Choice of health care provider*: Q7428.
- (7) *Basic amenities*: cleanliness (Q7429) and space (Q7430).
- (8) *Social support*: family visit (Q7431) and external contact (Q7432).

Results are reported for the total WHS sample (category: "TOTAL"), and by the following sample sub-groups: sex, area of residence, age group, years of education, income quintiles, reason for visit, ownership (of health facility), and self-assessed health. Mean values and standard errors (SE) are reported for each category.

Sub-groups common to other tables were constructed in the same manner. Common sub-groups include sex (Q1001), area of residence (Q0104), age group (regrouping of reported age in Q1002), years of education (Q1010) and income quintiles. To determine income and subsequently income quintiles, an asset index was constructed for each household using responses to section 0700 on "Permanent Income Indicators" from the WHS household questionnaire.

Ownership, condition and self-assessed health sub-groups were constructed uniquely for the responsiveness section's tables. There are four categories of ownership: "Operated by the government" (Government), "Privately operated" (Private), "NGO" and "Other". To construct the ownership sub-group, information was combined from (a) Q7204, Q7205 and Q7301 for those utilizing ambulatory services, and (b) Q7200, Q7201 and Q7401 for those utilizing hospital inpatient services. The sub-group "Condition" used information from Q7403 ("Which of the following best describes the reason for your [child's] last overnight stay?"). The eight categories of Q7403 include high fever, diarrhoea, or cough; childbirth; arthritis; asthma; heart disease; bodily injury; minor surgery; and other. Self-assessed health was constructed using information from Q2000 ("In general, how would you rate your health today as?") in the WHS. Respondents were asked to select one of the following five categories: "Very good", "Good", "Moderate", "Bad" and "Very bad".



## 7.6 Importance of different domains of responsiveness: percent reporting "Extremely Important"

	Prompt Attention		Dignity		Communication		Autonomy		Confidentiality		Choice		Basic Amenities		Social Support	
	%	SE	%	SE	%	SE	%	SE	%	SE	%	SE	%	SE	%	SE
<b>Sex</b>																
Female	16.5	2.3	24.8	2.2	14.9	1.6	9.8	1.8	20.3	1.5	12.7	2.0	17.9	3.1	8.9	1.5
Male	17.1	3.6	26.8	2.7	16.9	2.8	11.3	2.3	21.8	1.6	13.7	2.6	18.3	2.5	8.9	2.0
<b>Area of Residence</b>																
Urban	25.3	2.6	27.9	3.1	18.4	2.6	16.3	2.5	21.2	1.8	18.5	1.8	23.5	2.1	12.7	3.4
Rural	13.0	3.4	24.8	2.5	14.7	2.5	8.0	2.0	21.0	1.8	10.8	2.8	15.7	3.0	7.2	1.4
<b>Age Group</b>																
18-29y	18.5	2.8	33.4	2.4	20.3	2.4	11.7	1.8	29.2	2.9	13.7	1.6	22.5	3.7	12.7	2.2
30-44y	17.3	2.4	25.0	2.2	15.7	1.8	11.0	1.7	20.6	1.4	13.8	1.5	20.0	2.2	7.6	1.6
45-59y	16.7	4.1	27.1	2.5	15.5	3.7	10.4	3.1	22.1	2.7	14.0	4.1	17.4	3.6	9.3	3.2
60-69y	13.2	3.1	20.4	2.0	14.7	2.8	7.8	2.0	13.5	2.3	11.0	2.2	10.7	2.8	7.0	1.8
70+y	15.6	4.6	14.7	3.6	10.0	1.8	10.2	1.5	11.1	1.5	9.5	2.5	13.0	1.3	6.4	1.8
<b>Education Years</b>																
0	10.8	2.6	18.6	3.8	6.6	2.3	6.5	1.4	9.0	1.5	7.4	1.8	9.3	2.0	4.2	1.3
1-5	11.8	2.7	18.7	2.9	11.4	2.6	6.8	2.0	17.2	3.5	9.2	2.5	13.9	3.4	4.8	2.0
6-11	17.0	3.1	28.7	1.8	19.3	2.1	12.3	2.3	23.8	1.2	15.1	2.4	18.8	2.3	10.8	1.5
12+	25.6	3.7	31.4	4.0	18.0	2.8	12.9	2.0	25.8	2.0	16.0	2.2	26.4	3.5	11.9	2.1
<b>Income Quintiles</b>																
Q1	11.6	3.5	18.5	3.2	9.2	2.2	5.5	1.6	16.0	4.0	10.0	1.8	15.0	3.8	4.2	1.8
Q2	13.8	2.4	22.6	3.2	13.0	2.2	9.4	2.7	17.3	2.4	11.5	1.5	16.5	3.2	6.6	2.5
Q3	17.4	2.9	22.3	1.8	14.6	1.5	12.2	1.6	19.1	2.0	14.1	1.5	15.1	1.2	9.4	1.3
Q4	17.7	3.5	28.0	3.9	18.1	4.2	12.3	2.3	21.6	2.2	13.6	3.0	19.2	2.6	9.4	1.7
Q5	21.4	5.0	35.0	4.0	21.7	3.5	10.9	3.9	29.5	2.2	15.4	5.3	23.8	5.8	13.2	2.9
<b>Ownership</b>																
Government	16.2	3.3	26.1	2.2	17.7	2.6	9.7	2.2	22.8	1.6	13.1	3.0	18.9	3.0	8.8	1.7
Private	10.7	5.5	23.3	4.1	11.6	6.0	4.1	1.5	21.5	4.6	7.2	3.4	11.0	1.4	4.0	1.1
NGO	9.3	8.8	15.8	7.7	15.6	8.0	3.0	2.8	24.2	10.2	7.0	6.7	19.5	11.1	3.0	2.8
Other	29.9	22.2	50.6	16.3	2.3	2.3	10.5	9.3	46.2	21.9	42.6	19.7	36.1	21.6	0.0	0.0
<b>Self-Assessed Health</b>																
Very-Good	23.7	5.7	35.5	4.8	25.6	3.2	18.3	4.5	30.1	3.8	19.5	4.5	24.0	4.8	16.0	4.5
Good	14.6	2.5	23.5	2.4	12.5	2.1	8.3	1.2	20.3	2.2	11.9	1.8	17.4	3.0	7.0	1.2
Moderate	15.0	2.8	23.6	1.5	14.5	2.2	8.2	1.6	17.2	1.7	10.9	2.3	15.0	1.8	7.4	0.9
Bad	15.4	4.0	19.0	3.1	10.9	3.0	9.5	3.2	15.4	2.6	10.3	2.8	18.4	4.3	4.7	1.9
Very-Bad	19.5	9.2	13.6	5.3	14.9	5.0	11.2	4.3	6.2	2.9	14.9	8.8	6.0	2.9	3.9	2.3
<b>Type of Care</b>																
Ambulatory-Adul	15.9	4.5	26.3	3.7	16.7	2.8	9.4	2.6	24.2	2.2	12.4	4.0	18.2	3.7	8.8	2.2
Ambulatory-Chil	13.6	2.9	23.1	2.1	17.0	3.9	8.6	1.6	21.1	4.0	11.9	1.8	18.1	1.8	6.8	1.1
Inpatient-Adult	20.1	6.8	21.2	7.2	21.9	8.6	11.5	3.7	13.6	4.8	20.0	7.0	10.4	3.3	8.5	3.2
Inpatient-Child	33.8	8.9	35.8	9.1	20.4	10.5	1.0	1.1	26.8	9.8	13.9	7.9	17.3	9.2	0.0	0.0
Non-Users	18.1	2.2	26.5	2.7	14.7	1.9	12.0	1.8	19.2	1.8	13.8	1.5	18.3	2.2	9.8	1.9
TOTAL	16.8	2.8	25.8	2.0	15.9	2.0	10.5	1.8	21.1	1.4	13.2	2.1	18.1	2.3	8.9	1.5

This table shows the percent of people who rated a responsiveness domain as "Extremely Important". All survey respondents were queried on their perception of the importance of each of the eight responsiveness domains in section 7100 of the WHS where each domain was described in detail (Q7100-Q7107).

Respondents were asked to say whether the domain was "Extremely Important", "Very Important", "Moderately Important", "Slightly Important" or "Not

Important".

Results are reported for the total WHS sample (category: "TOTAL"), and by the following sample sub-groups: sex, area of residence, age group, years of education, income quintiles, ownership (of health facility), self-assessed health, and type of care. Mean values and standard errors (SE) are reported for each category.

Sub-groups common to other tables were constructed in the same manner. Common sub-groups include sex (Q1001), area of residence (Q0104), age group (regrouping of reported age in Q1002), years of education (Q1010) and income quintiles. To determine income and subsequently income quintiles, an asset index was constructed for each household using responses to section 0700 on "Permanent Income Indicators" from the WHS household questionnaire.

Ownership, self-assessed health and type of care sub-groups were constructed uniquely for the responsiveness section's tables. There are four categories of ownership: "Operated by the government" (Government), "Privately operated" (Private), "NGO" and "Other". To construct the ownership sub-group, information was combined from (a) Q7204, Q7205 and Q7301 for those utilizing ambulatory services, and (b) Q7200, Q7201 and Q7401 for those utilizing hospital inpatient services. Self-assessed health was constructed using information from Q2000 ("In general, how would you rate your health today as?") in the WHS. Respondents were asked to select one of the following five categories: "Very good", "Good", "Moderate", "Bad" and "Very bad". Type of care is a constructed sample sub-group combining information from Q7000, Q7001 and Q7016. There are five categories of type of care: "Ambulatory adult", "Ambulatory child", "Inpatient adult", "Inpatient child" and "Non users".

---

## 8.0 Expenditure Background Indicators (2002)

---

GDP per capita (\$)	1,075
Total health expenditure per capita (\$)	63
Total population (000)	1,302,307
Life expectancy at birth (Both sexes)	71.1
Life expectancy at birth (male)	69.6
Life expectancy at birth (female)	72.7
Healthy life expectancy at birth (Both sexes)	64.1
Healthy life expectancy at birth (Male)	63.1
Healthy life expectancy at birth (Female)	65.2
Government funded health expenditure as a percentage of total health expenditure	33.7
Social security funded health expenditure as a percentage of total health expenditure	17.1
Private health insurance premiums as a percentage of total health expenditure	0.2
Out-of-pocket payment as a percentage of total health expenditure	63.9

## 8.1 Distribution of health payments across different population groups

	Mean Household expenditure (EXP) in local currency	% Poor	% Impoverished	% Catastrophic	OOP % EXP	OOP % non-subsistence spending	Mean OOP in local currency
<b>Catastrophic</b>							
No	1,282	19.4	1.2		4.2	7.2	64
Yes	1,945	21.6	20.7		42.1	63.8	1223
<b>Poor</b>							
No	1,649		5.5	16.1	11.2	16.3	310
Yes	344		0.0	18.0	7.6	17.2	27
<b>Insurance</b>							
No	1,112	37.7	6.6	20.5	11.2	19.2	288
Yes	1,582	7.5	2.9	13.7	10.0	14.6	231
<b>Residence</b>							
rural	1,191	26.0	5.9	17.9	10.7	17.5	179
urban	1,799	6.9	1.4	13.6	9.9	14.5	407
<b>Income_Quintile</b>							
1st(poorest)	346	98.6	1.1	18.2	7.7	17.5	28
2nd	667	0.0	15.4	14.2	8.0	14.3	54
3rd	923	0.0	2.6	12.1	7.5	12.8	70
4th	1,351	0.0	0.7	12.1	9.6	14.5	130
5th(richest)	3,676	0.0	2.1	25.7	19.6	23.5	993
total	1,391	19.7	4.4	16.5	10.5	16.5	254

OOP: Out of pocket

*Household consumption expenditure (EXP)* comprises both monetary and in-kind payment on all goods and services and the money value of the consumption of home-made products.

*Poor* - a household is considered poor when its total household expenditure is smaller than its subsistence spending  
*Impoverishment* - a non-poor household is impoverished by health payment when it becomes poor after paying for health services.

*Catastrophic health expenditure* occurs when a household's total out-of-pocket health payments equals or exceeds 40% of the households capacity to pay or non-subsistence spending.

*Out of pocket health payments (OOP)* refer to payments made by households at the point they receive health services. It includes doctor's consultation fees, purchases of medication and hospital bills. Spending on alternative and/or traditional medicine is included. Expenditure on health related transportation and special nutrition is excluded. Insurance reimbursements are also excluded.

*Subsistence spending* - household subsistence spending is the minimum requirement to maintain a basic life in a society. A poverty line is used in the analysis as subsistence spending.

*Food expenditure* is the amount spent on all foodstuffs by the household plus the value of the family's own food production consumed within the household. It excludes expenditure on alcoholic beverages, tobacco and food consumption outside the home (e.g hotel and restaurants).

*Household capacity to pay* - is defined as a household's non-subsistence spending.

---

## 8.2 Percent distribution of structure of out-of-pocket health payments

---

	Inpatient	Outpatient	Traditional	Drugs	Other	Total
<b>Catastrophic</b>						
No	2.5	49.3	2.0	34.7	11.7	100
Yes	53.9	19.8	0.7	17.8	7.9	100
<b>Poor</b>						
No	44.0	26.1	0.9	20.4	8.6	100
Yes	1.0	17.4	3.3	65.6	12.6	100
<b>Insurance</b>						
No	54.9	14.5	0.8	22.5	7.4	100
Yes	33.2	35.7	1.1	20.3	9.8	100
<b>Residence</b>						
rural	34.6	38.1	1.2	19.3	6.8	100
urban	50.8	15.0	0.7	23.1	10.4	100
<b>Income_Quintile</b>						
1st(poorest)	1.0	17.0	3.1	64.6	14.3	100
2nd	0.5	27.7	3.3	60.9	7.7	100
3rd	0.4	47.0	0.6	47.7	4.4	100
4th	2.2	62.3	1.7	28.0	5.8	100
5th(richest)	55.0	19.8	0.7	15.2	9.3	100
total	43.1	25.9	1.0	21.3	8.7	100

---

### 8.3 Financial sources used by households for paying for health services

	Savings	Sold Items	Borrow from relatives &	Borrow from others	Health insurance	Current Income	Other
<b>OOP%non_subsistence_spending</b>							
less than 10%	10.1	0.5	8.6	5.1	0.7	97.2	3.7
10-20%	14.1	0.9	9.4	8.5	2.9	97.5	2.9
20-40%	12.2	0.8	13.9	10.0	0.9	98.0	2.3
above 40%	17.4	1.3	18.8	14.1	2.4	94.2	3.7
<b>Hospitalization</b>							
No	10.8	0.7	10.6	7.2	0.5	97.1	3.3
Yes	28.2	1.3	17.3	13.1	10.3	93.4	5.4
<b>Insurance</b>							
No	6.5	1.3	15.0	13.7	0.1	97.4	2.9
Yes	15.7	0.4	8.3	3.4	2.0	96.5	3.8
<b>Residence</b>							
rural	11.7	1.1	13.7	9.7	0.4	95.8	3.3
urban	12.6	0.0	5.6	3.4	2.9	98.8	3.7
<b>Income_Quintile</b>							
1st(poorest)	4.3	0.8	18.4	12.3	0.0	94.5	3.9
2nd	6.5	1.1	11.9	9.7	0.4	98.0	2.6
3rd	12.1	0.8	8.2	5.0	0.5	96.0	2.7
4th	14.5	0.2	9.1	4.9	1.7	98.1	3.6
5th(richest)	22.6	0.7	7.6	6.0	3.5	97.4	4.4
total	12.0	0.7	11.0	7.6	1.2	96.8	3.4

---

## 8.4 Insurance Coverage

---

	Insured	SE	Mandatory Insurance	SE	Voluntary Insurance	SE	Insured as dependent	SE	Mandatory and Voluntary	SE
Q1(poorest)	3.8	1.0	1.0	0.3	4.5	1.1	4.4	3.2	1.5	1.0
Q2	10.5	1.3	6.3	1.2	11.8	1.7	8.2	4.6	10.4	4.0
Q3	23.0	1.6	20.3	2.2	23.3	1.9	8.7	3.8	11.5	3.0
Q4	32.5	1.7	35.6	2.6	31.6	1.8	24.7	8.5	34.0	3.9
Q5(richest)	30.2	2.5	36.7	4.4	28.7	3.0	54.1	10.6	42.7	4.6
All	6,971	864	1,687	291	5,505	819	93	20	259	55

## 10.1 Inability to control the important things in life - q8000

	Never	SE	Almost never	SE	Sometimes	SE	Fairly often	SE	Very often	SE	Missing	SE	N
<b>Gender</b>													
Male	38.8	2.7	36.0	2.6	23.1	3.1	1.2	0.3	0.9	0.4	0.0	0.0	1,957
Female	36.1	4.2	37.4	3.4	24.0	3.0	1.5	0.5	0.9	0.3	0.1	0.1	2,036
M	0.0	0.0	0.0	0.0	0.0	0.0	0.0	0.0	0.0	0.0	0.0	0.0	
<b>Residence</b>													
Urban	33.4	5.6	39.5	2.5	24.1	4.5	1.8	0.6	1.1	0.6	0.2	0.1	1,229
Rural	39.3	3.8	35.5	3.5	23.3	3.6	1.2	0.4	0.8	0.3	0.0	0.0	2,764
M	0.0	0.0	0.0	0.0	0.0	0.0	0.0	0.0	0.0	0.0	0.0	0.0	
<b>Income</b>													
Q1(poorest)	26.5	6.3	37.1	4.6	31.2	4.0	3.0	1.4	2.2	1.1	0.0	0.0	566
Q2	38.9	3.8	34.8	2.7	24.3	3.5	0.7	0.3	1.3	0.6	0.1	0.1	732
Q3	39.8	3.2	34.8	3.0	23.2	3.4	1.4	0.6	0.7	0.6	0.0	0.0	893
Q4	40.5	4.2	36.2	3.5	21.7	4.9	1.0	0.5	0.6	0.3	0.0	0.0	1,008
Q5(richest)	37.3	4.6	41.2	5.1	20.1	2.6	1.0	0.5	0.2	0.1	0.2	0.2	775
M	38.1	13.2	32.4	11.2	24.3	11.9	5.2	3.6	0.0	0.0	0.0	0.0	19
<b>Age</b>													
18-29	45.5	2.4	33.2	3.5	20.7	4.2	0.7	0.6	0.0	0.0	0.0	0.0	732
30-44	38.3	3.1	38.7	2.7	21.2	1.7	1.3	0.5	0.6	0.3	0.0	0.0	1,286
45-59	37.5	5.1	36.5	3.2	23.8	3.4	1.3	0.4	0.9	0.4	0.0	0.0	1,212
60-69	31.3	3.7	36.6	3.4	28.3	5.0	1.4	0.9	2.0	1.1	0.3	0.3	422
70-79	26.9	4.9	37.8	4.7	33.0	4.4	1.6	0.8	0.8	0.5	0.0	0.0	265
80+	16.2	6.2	38.3	11.2	28.6	9.5	8.3	3.8	8.6	6.1	0.0	0.0	76
M	0.0	0.0	0.0	0.0	0.0	0.0	0.0	0.0	0.0	0.0	0.0	0.0	
All	37.4	3.1	36.7	2.6	23.6	2.8	1.3	0.3	0.9	0.3	0.0	0.0	3,993



## 10.2 Inability to cope - q8001

	Never	SE	Almost never	SE	Sometimes	SE	Fairly often	SE	Very often	SE	Missing	SE	N
<b>Gender</b>													
Male	36.3	2.8	38.2	3.3	23.2	3.2	1.5	0.4	0.8	0.2	0.0	0.0	1,957
Female	34.5	3.6	36.0	3.9	27.8	2.7	1.0	0.3	0.7	0.3	0.1	0.1	2,036
M	0.0	0.0	0.0	0.0	0.0	0.0	0.0	0.0	0.0	0.0	0.0	0.0	
<b>Residence</b>													
Urban	33.3	5.2	39.5	3.3	24.5	3.0	1.4	0.5	1.1	0.6	0.2	0.1	1,229
Rural	36.3	3.7	35.9	4.6	26.0	3.6	1.1	0.3	0.6	0.2	0.0	0.0	2,764
M	0.0	0.0	0.0	0.0	0.0	0.0	0.0	0.0	0.0	0.0	0.0	0.0	
<b>Income</b>													
Q1(poorest)	25.3	6.0	40.9	4.9	30.4	3.0	1.8	0.4	1.7	0.7	0.0	0.0	566
Q2	38.0	3.6	32.3	2.5	26.4	2.8	1.9	0.9	1.3	0.5	0.1	0.1	732
Q3	35.0	3.3	35.9	4.7	26.9	3.9	1.3	0.5	0.7	0.5	0.0	0.0	893
Q4	39.4	4.4	36.6	4.0	23.5	3.5	0.2	0.2	0.3	0.2	0.0	0.0	1,008
Q5(richest)	35.5	4.3	40.7	5.6	22.4	3.8	1.2	0.6	0.0	0.0	0.2	0.2	775
M	33.9	13.3	36.6	11.6	24.3	11.9	5.2	3.6	0.0	0.0	0.0	0.0	19
<b>Age</b>													
18-29	43.0	1.8	33.3	4.5	23.0	4.6	0.4	0.3	0.5	0.3	0.0	0.0	732
30-44	36.6	3.2	38.7	3.3	23.2	1.5	0.9	0.2	0.5	0.2	0.0	0.0	1,286
45-59	34.7	4.0	38.1	4.0	25.7	3.3	0.9	0.3	0.6	0.2	0.0	0.0	1,212
60-69	29.9	4.0	36.7	2.8	30.2	4.4	1.9	1.0	1.1	0.7	0.3	0.3	422
70-79	27.0	5.0	35.2	8.4	32.2	6.0	4.8	2.8	0.9	0.4	0.0	0.0	265
80+	12.3	5.2	36.9	10.7	39.3	9.5	4.1	1.9	7.4	6.0	0.0	0.0	76
M	0.0	0.0	0.0	0.0	0.0	0.0	0.0	0.0	0.0	0.0	0.0	0.0	
All	35.4	3.0	37.0	3.4	25.6	2.7	1.2	0.3	0.7	0.2	0.0	0.0	3,993

### 10.3 Satisfaction with your health - q8002

	Very dissatisfied	SE	Dissatisfied	SE	Neither satisfied nor dissatisfied	SE	Satisfied	SE	Very Satisfied	SE	Missing	SE	N
<b>Gender</b>													
Male	2.7	0.6	7.5	1.3	30.0	2.1	52.2	3.2	7.6	2.2	0.0	0.0	1,957
Female	2.5	0.4	9.9	1.0	35.0	2.6	48.0	1.5	4.5	1.2	0.1	0.1	2,036
M	0.0	0.0	0.0	0.0	0.0	0.0	0.0	0.0	0.0	0.0	0.0	0.0	
<b>Residence</b>													
Urban	2.7	0.8	7.9	0.8	35.5	4.0	48.8	1.4	4.9	2.3	0.2	0.1	1,229
Rural	2.6	0.5	9.1	1.0	31.2	2.0	50.6	2.2	6.5	2.0	0.0	0.0	2,764
M	0.0	0.0	0.0	0.0	0.0	0.0	0.0	0.0	0.0	0.0	0.0	0.0	
<b>Income</b>													
Q1(poorest)	2.3	0.8	14.8	2.9	36.8	3.4	42.1	4.9	3.9	1.4	0.0	0.0	566
Q2	2.9	0.8	13.3	3.5	27.7	3.1	47.3	2.5	8.6	2.1	0.1	0.1	732
Q3	2.4	0.7	7.1	1.2	35.3	3.8	49.3	3.1	6.0	1.8	0.0	0.0	893
Q4	2.9	0.9	6.7	1.0	31.9	1.6	52.9	2.2	5.5	1.7	0.0	0.0	1,008
Q5(richest)	2.4	1.8	4.3	0.9	31.5	1.9	55.7	1.6	5.9	2.4	0.2	0.2	775
M	3.1	3.0	16.2	11.3	37.9	9.9	41.5	10.2	1.4	1.4	0.0	0.0	19
<b>Age</b>													
18-29	3.7	1.1	1.9	0.7	20.1	4.1	62.1	3.3	12.3	3.9	0.0	0.0	732
30-44	2.6	0.7	7.9	1.3	29.0	2.5	55.1	2.4	5.3	1.2	0.1	0.1	1,286
45-59	2.1	0.6	10.6	1.7	35.1	2.7	47.5	3.9	4.7	1.7	0.0	0.0	1,212
60-69	2.6	1.3	11.6	2.2	44.8	3.4	37.1	3.3	3.6	1.3	0.3	0.3	422
70-79	2.0	0.6	18.7	3.0	47.2	5.6	28.8	5.0	3.3	1.9	0.0	0.0	265
80+	3.5	2.1	9.6	4.0	51.8	6.1	34.4	6.8	0.7	0.7	0.0	0.0	76
M	0.0	0.0	0.0	0.0	0.0	0.0	0.0	0.0	0.0	0.0	0.0	0.0	
All	2.6	0.4	8.7	0.7	32.5	1.9	50.0	1.6	6.0	1.5	0.1	0.0	3,993

**10.4 Feeling safe when alone at home - q8011**

	Completely safe	SE	Very safe	SE	Moderately safe	SE	Slightly safe	SE	Not safe at all	SE	Missing	SE	N
<b>Gender</b>													
Male	11.1	2.4	47.1	4.0	36.7	3.6	3.3	0.7	1.0	0.4	0.8	0.2	1,957
Female	9.5	2.4	39.2	3.3	43.5	3.7	5.0	0.7	1.7	1.2	1.0	0.4	2,036
M	0.0	0.0	0.0	0.0	0.0	0.0	0.0	0.0	0.0	0.0	0.0	0.0	
<b>Residence</b>													
Urban	9.0	1.3	35.3	2.6	46.6	2.6	4.9	1.4	1.2	0.6	2.9	0.9	1,229
Rural	10.8	3.2	46.5	4.7	37.3	4.8	3.9	0.7	1.4	1.0	0.0	0.0	2,764
M	0.0	0.0	0.0	0.0	0.0	0.0	0.0	0.0	0.0	0.0	0.0	0.0	
<b>Income</b>													
Q1(poorest)	9.6	3.3	51.7	8.6	35.3	7.4	2.5	0.7	0.8	0.6	0.0	0.0	566
Q2	10.2	2.5	50.3	5.9	35.0	3.9	2.9	1.0	1.1	0.6	0.5	0.2	732
Q3	8.4	1.6	44.6	3.4	38.6	4.0	5.3	0.9	2.6	1.8	0.5	0.2	893
Q4	9.1	2.5	37.6	3.8	47.2	4.6	4.9	1.3	0.9	0.7	0.3	0.1	1,008
Q5(richest)	14.6	4.7	35.2	2.3	41.6	4.3	4.1	1.4	1.3	0.8	3.2	1.4	775
M	6.9	5.5	48.5	11.1	24.3	9.3	20.3	12.1	0.0	0.0	0.0	0.0	19
<b>Age</b>													
18-29	13.9	2.1	42.2	3.4	37.8	3.0	2.1	1.2	3.4	2.2	0.7	0.3	732
30-44	8.8	1.7	45.6	4.4	39.6	3.8	3.7	1.3	0.9	0.4	1.4	0.6	1,286
45-59	11.0	4.1	42.6	4.0	39.2	5.5	5.4	1.0	1.4	0.8	0.5	0.3	1,212
60-69	9.5	2.2	41.7	4.2	43.7	3.6	3.7	1.1	0.4	0.3	1.0	0.6	422
70-79	6.0	2.0	37.5	6.4	48.5	8.3	7.0	2.3	0.1	0.1	0.7	0.5	265
80+	8.8	3.6	45.0	6.1	38.8	7.5	6.5	5.0	1.0	1.0	0.0	0.0	76
M	0.0	0.0	0.0	0.0	0.0	0.0	0.0	0.0	0.0	0.0	0.0	0.0	
All	10.3	2.2	43.1	3.5	40.2	3.4	4.2	0.7	1.4	0.7	0.9	0.3	3,993

**10.5    Feeling safe when walking down the street alone after dark - q8012**

	Completely safe	SE	Very safe	SE	Moderately safe	SE	Slightly safe	SE	Not safe at all	SE	Missing	SE	N
<b>Gender</b>													
Male	8.1	2.3	34.2	4.3	44.3	4.0	10.3	1.8	2.4	0.7	0.8	0.3	1,957
Female	4.2	1.8	23.1	3.3	46.7	2.5	19.2	2.9	5.5	1.4	1.2	0.4	2,036
M	0.0	0.0	0.0	0.0	0.0	0.0	0.0	0.0	0.0	0.0	0.0	0.0	
<b>Residence</b>													
Urban	2.8	0.5	18.0	1.9	54.4	2.2	17.8	1.8	3.8	0.9	3.2	1.0	1,229
Rural	7.6	2.8	33.2	4.8	41.5	4.1	13.5	3.1	4.0	1.4	0.0	0.0	2,764
M	0.0	0.0	0.0	0.0	0.0	0.0	0.0	0.0	0.0	0.0	0.0	0.0	
<b>Income</b>													
Q1(poorest)	7.7	3.1	36.8	4.4	40.1	5.9	10.2	2.4	5.3	2.3	0.0	0.0	566
Q2	6.9	1.9	36.2	4.3	40.1	3.3	13.3	2.6	3.0	1.2	0.5	0.2	732
Q3	4.5	1.2	29.0	4.3	46.6	4.3	14.0	2.2	5.3	2.3	0.6	0.2	893
Q4	4.9	2.2	24.6	4.3	48.9	3.1	17.3	2.9	3.9	0.6	0.3	0.1	1,008
Q5(richest)	7.7	4.1	20.0	3.1	49.0	4.3	17.2	4.4	2.6	1.4	3.5	1.4	775
M	8.9	6.3	26.0	8.1	42.1	8.5	22.9	11.8	0.0	0.0	0.0	0.0	19
<b>Age</b>													
18-29	6.2	1.8	26.6	4.5	44.2	6.0	16.0	2.9	6.3	2.8	0.7	0.3	732
30-44	5.8	1.7	30.9	4.0	45.0	3.5	13.1	2.4	3.7	0.8	1.5	0.6	1,286
45-59	6.8	2.5	28.2	3.4	46.7	3.6	14.4	2.2	3.4	0.9	0.5	0.3	1,212
60-69	6.4	2.7	30.3	3.5	43.9	4.7	14.6	2.7	3.4	1.0	1.3	0.6	422
70-79	3.4	1.5	20.4	5.5	50.1	4.1	22.6	4.6	2.3	0.9	1.1	0.7	265
80+	9.6	6.2	31.1	5.7	39.9	6.9	15.2	7.2	4.2	3.0	0.0	0.0	76
M	0.0	0.0	0.0	0.0	0.0	0.0	0.0	0.0	0.0	0.0	0.0	0.0	
All	6.1	1.9	28.5	3.4	45.5	3.0	14.8	2.2	4.0	1.0	1.0	0.3	3,993