

REPORT OF GUATEMALA

TABLE OF CONTENTS

1	Introduction
2	Methodology
2.1	Sampling
2.2.1	Geographic Component of the Survey
2.2.2	The map
2.3	Survey Metrics
2.3.1	Sample deviation index
2.3.2	HH Sample deviation index
2.3.3	Response rate
2.3.4	Missing data
2.3.5	Reliability
3	Socio-Demographic Profile
3.1	Household composition by residence and age groups according to income quintile
3.2	Selected age distributions by income quintile
3.3	Characteristics of head of household by income quintile
3.4	Household population: percent distribution of the de jure population by age, residence, marital status and education according to sex
3.5	Background characteristics of respondents: percent distribution of men and women by age, residence, marital status and education
4	Risk Factors
4.1	Prevalence of smoking and average daily tobacco consumption
4.2	Prevalence of life time abstainers, non-heavy drinkers, infrequent heavy drinkers and frequent heavy drinkers
4.3	Prevalence of insufficient intake of fruit and vegetables and insufficient physical activity
4.4	Access to improved drinking-water: percent distribution of households by

- type of access to drinking water
- 4.5 Access to improved sanitation: percent distribution of households by type of sanitation facility
- 4.6 Solid Fuel use for cooking: percent distribution of households by type of cooking fuel used
- 5 Coverage
- 5.01 Tuberculosis
- 5.02 HIV Prevention and Screening
- 5.03 Antenatal Care and Mother to Child Transmission of HIV
- 5.04 Birth Delivery Care
- 5.05 Child's Health - Common Illness
- 5.06 Child's Health - Danger Signs
- 5.07 Vaccinations Meeting WHO Timeline Recommendations for Children 12 to 23 months of Age with Vaccination Card
- 5.08 Vaccination Status of Children 12-23 Months
- 5.09 Women's Cancer Screening
- 5.10 Oral Health and Injuries
- 5.11 Self Reported Non-Communicable Conditions
- 5.12 Mental Health Conditions
- 5.13 Cataracts
- 6 Health State Descriptions
- 6.01 In general, rate your health today - q2000
- 6.02 Difficulty with 'work and household activities' in last 30 days - q2001
- 6.03 Difficulty with 'moving around' in last 30 days - q2010
- 6.04 Difficulty with 'vigorous activities' in last 30 days - q2011
- 6.05 Difficulty with 'self-care' in last 30 days - q2020
- 6.06 Difficulty with 'taking care of and maintaining general appearance' in last 30 days - q2021
- 6.07 Amount of 'bodily aches or pains' in last 30 days - q2030

- 6.08 Amount of 'bodily discomfort' in last 30 days - q2031
- 6.09 Difficulty with 'concentrating or remembering things' in last 30 days - q2050
- 6.10 Difficulty with 'learning a new task' in last 30 days - q2051
- 6.11 Difficulty with 'personal relationships or participation in the community' in last 30 days - q2060
- 6.12 Difficulty with 'dealing with conflicts and tensions' in last 30 days - q2061
- 6.13 Difficulty with 'seeing and recognizing a person you know across the road (20m)' in last 30 days - q2071
- 6.14 Difficulty with 'seeing an object at arm's length or in reading' in last 30 days - q2072
- 6.15 Problem with 'sleeping' in last 30 days - q2080
- 6.16 Problem with 'feeling rested and refreshed' in last 30 days - q2081
- 6.17 Problem with 'feeling sad, low, or depressed' in last 30 days - q2090
- 6.18 Problem with 'worry or anxiety' in last 30 days - q2091
- 6.19 Adjusted for vignette responses
- 7 Health System Responsiveness
 - 7.1 Self-reported utilization of health services and perceived unmet need
 - 7.2 Patient assessed characteristics of ambulatory health services
 - 7.3.1 Patient assessment of responsiveness domains for ambulatory services: percent reporting "Moderate", "Bad" or "Very bad" - 1
 - 7.3.2 Patient assessment of responsiveness domains for ambulatory services: percent reporting "Moderate", "Bad" or "Very bad" - 2
 - 7.4 Patient assessed characteristics of hospital inpatient health services
 - 7.5.1 Patient assessment of responsiveness domains for hospital inpatient services: percent reporting "Moderate", "Bad" or "Very bad" - 1
 - 7.5.2 Patient assessment of responsiveness domains for hospital inpatient services: percent reporting "Moderate", "Bad" or "Very bad" - 2
 - 7.6 Importance of different domains of responsiveness: percent reporting "Extremely Important"
- 8 Health Expenditure, Insurance and Human Resources for Health

- 8.0 Expenditure Background Indicators (2002)
- 8.1 Distribution of health payments across different population groups
- 8.2 Percent distribution of structure of out-of-pocket health payments
- 8.3 Financial sources used by households for paying for health services
- 8.4 Insurance Coverage
- 8.5 Human resources for health
- 9.1 Adult Mortality Chart 1
- 9.2 Adult Mortality Chart 2
- 9.3 Adult Mortality Chart 3
- 9.4 Adult Mortality Chart 4
- 10 Stress and Social Capital
- 10.1 Inability to control the important things in life - q8000
- 10.2 Inability to cope - q8001
- 10.3 Satisfaction with your health - q8002
- 10.4 Feeling safe when alone at home - q8011
- 10.5 Feeling safe when walking down the street alone after dark - q8012

1. Introduction

The World Health Organization initiated the World Health Survey (WHS) as a *data collection platform* to obtain information on the health of populations and on health systems. The WHS responds to the need of countries for a detailed and sustainable health information system and gathers data through surveys to measure essential population health parameters. The WHS uses standard survey procedures and instruments for general population surveys to gather comparable data across WHO Member States. These methods and instruments have been refined through scientific review of literature, extensive consultations with international experts and large-scale pilot tests. WHS is designed to evolve through its implementation by continuous input from collaborators, including policy makers, survey institutions, scientists and other interested parties. The data is jointly owned by the countries and the WHO, and there is a commitment for a long-term data collection, building local capacity and using this information for health policy.

The objectives of the World Health Survey were to:

- develop a **means** of providing:
 - **valid, relevant, reliable** and **comparable** information on **outcomes, functions** and **inputs** to health systems
 - to **supplement** the information provided by routine **HIS**
- build the **evidence base** necessary for policy-makers:
 - to **routinely monitor** if health systems are achieving the **desired goals**
 - and in some countries, to assess if the **increase in health resources** is having the desired effect

The introductory chapter of each country report will provide details on the current sources of data from routine health information systems and ad hoc surveys. It will describe the health situation in the country and identify gaps. It will also present a brief overview on the health system organization within the country.

2. Sampling

The WHO sampling guidelines emphasized scientific principles of survey sampling as explicit standards for quality, included examples of good sampling plans, and identified quality assurance standards for countries to adhere to. WHO and technical advisers provided technical support to countries when needed. The following principles were used for sampling in the WHS:

1. The sample should target the *de facto* population (i.e. all people living in that country including guest workers, immigrants and refugees) and not *de jure* population (i.e. the citizens of that country alone) with complete geographic coverage of the country, if possible, or a representative geographic segment of the country.
2. A *sample frame* with 90% coverage that included all key subgroups of interest. Enumeration or listing of households to update the frame was recommended.
3. The WHS sample identified all adult members of the general population aged 18 years or older as its sample. Households are selected using a random, stratified sampling procedure. One individual per household is then selected through a random selection procedure using the Kish table method.
4. The WHS used a sampling strategy which encompasses a known non-zero selection probability for any individual included in the study. This makes it possible to extrapolate the data to the whole population. Households and individuals are selected with a known probability in order to provide selection probabilities for each household and individual in the data set.
5. The WHS sampling strategy was without replacement and categories of non-respondents were clearly defined.
6. The WHS used GPS devices in certain countries and digitized maps to geocode the data within specified guidelines.

Each national report will present a detailed description of the sampling strategy and the allocation tables

2.2.1 Geographic Component of the Survey

Geographic Information refers to any information associated with a location on the Earth's surface. This location can be associated to a coordinate (latitude/longitude), a place's name, a postal address or any other geographic object.

Household Surveys represent an important source of information. If the geographic location of the surveyed clusters is collected at the same time that the interview is conducted users are then able to integrate the spatial dimension in their analysis

The geographic component of the WHO WHS is stored in two sections of the questionnaire:

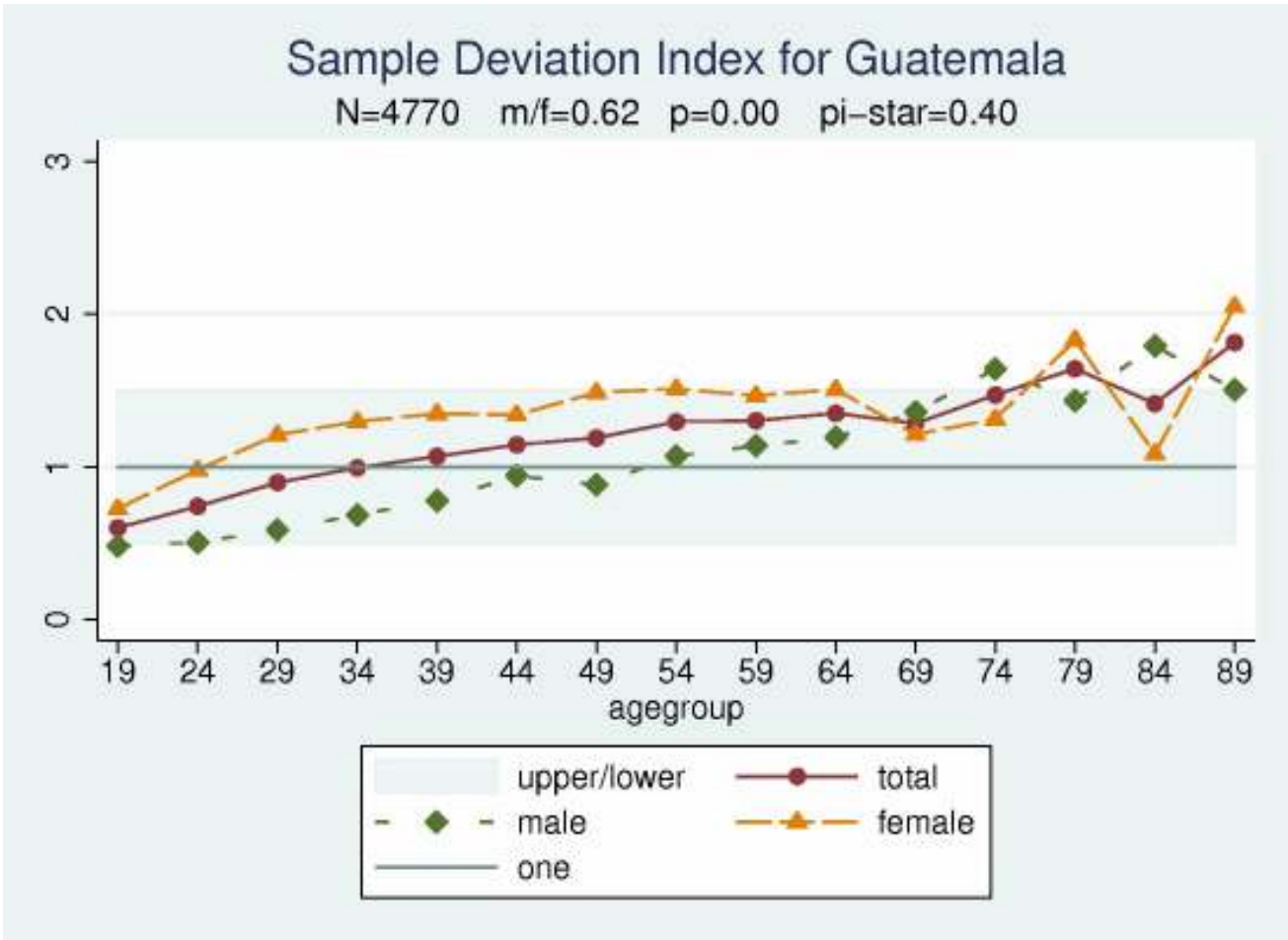
- 0100 Sampling Information allowing the link between the location of each cluster and the sampling frame used for the survey. This section has also been used in order to collect the type of setting in which each household was located at the time of the survey. This section of the questionnaire has been used for all the countries part of the WHO WHS
- 0200 Geocoding Information for the collection of the latitude and longitude of each household. This section has only been used in 27 countries where GPS devices were available or have been provided. The choice of these countries has been done on the basis of the availability of digital maps delimiting the surveyed clusters, the field data collection planning and their distribution within the different WHO regions. Specific training and field material have been prepared and used by the interviewers or field supervisors in these countries in order to collect the latitude and longitude of each of the surveyed household.

As the sampling design may not always include the administrative structure of the country and as the codes entered in the data set for the sampling level needed to be labelled, a key correspondence table containing this information has been collected after the survey itself.

Once all the survey data and the key correspondence table available a specific protocol has been applied to the two sections mentioned earlier in order to clean eventual data collection or data entry mistakes as well as to fill the gaps in close collaboration with the survey institution.

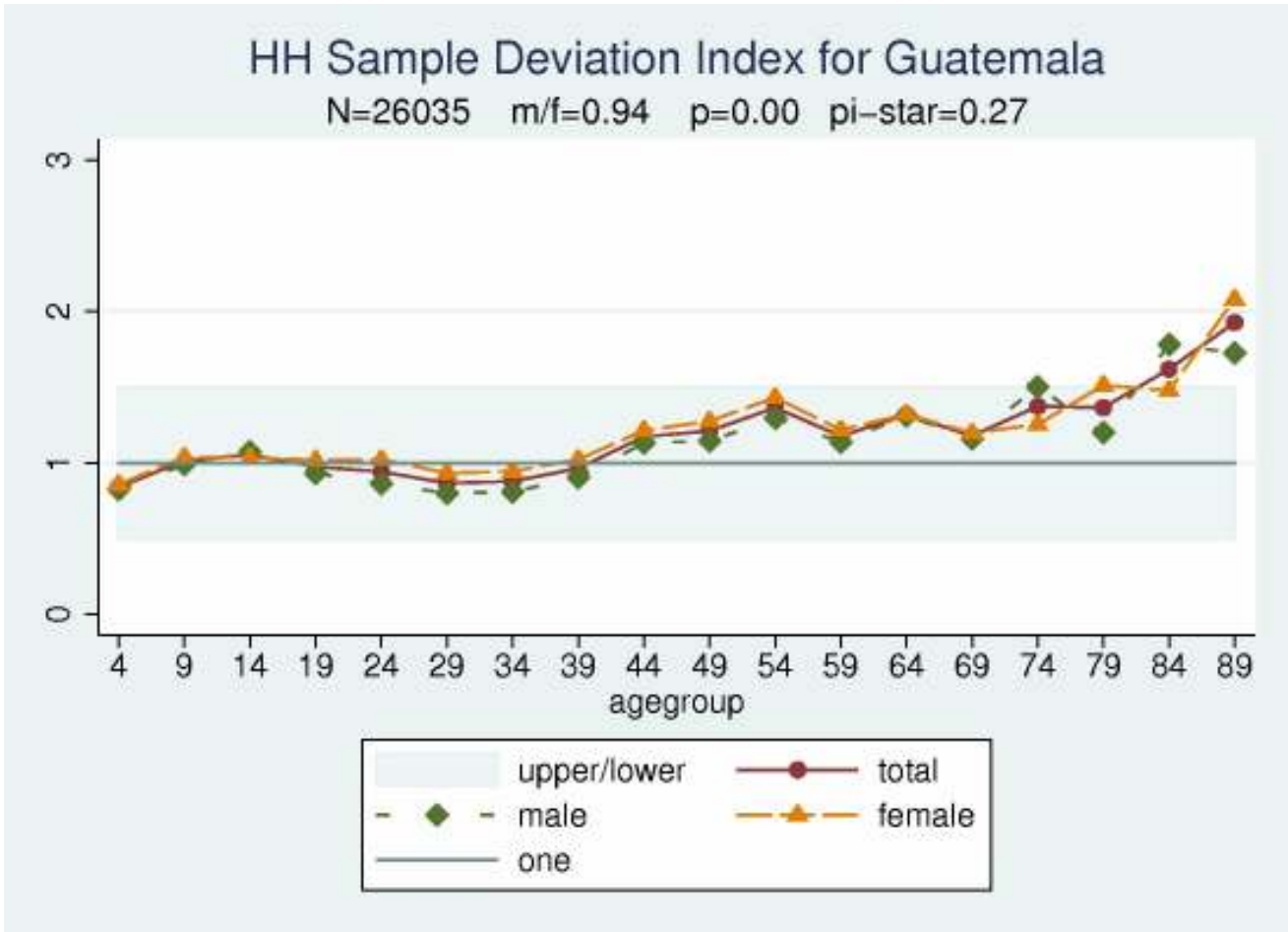
The questionnaire as well as the training material and data cleaning protocols used can be downloaded from the WHO WHS web site (<http://www.who.int/healthinfo/survey/en/index.html>) in the "Survey Instrument and Related Documents" section.

2.3.1 Sample deviation index



SDI

2.3.2 HH Sample deviation index



HDI

2.3.3 Response rate

Household

Selected	6,764
----------	-------

Interviewed	4,874
-------------	-------

Percentages	72
-------------	----

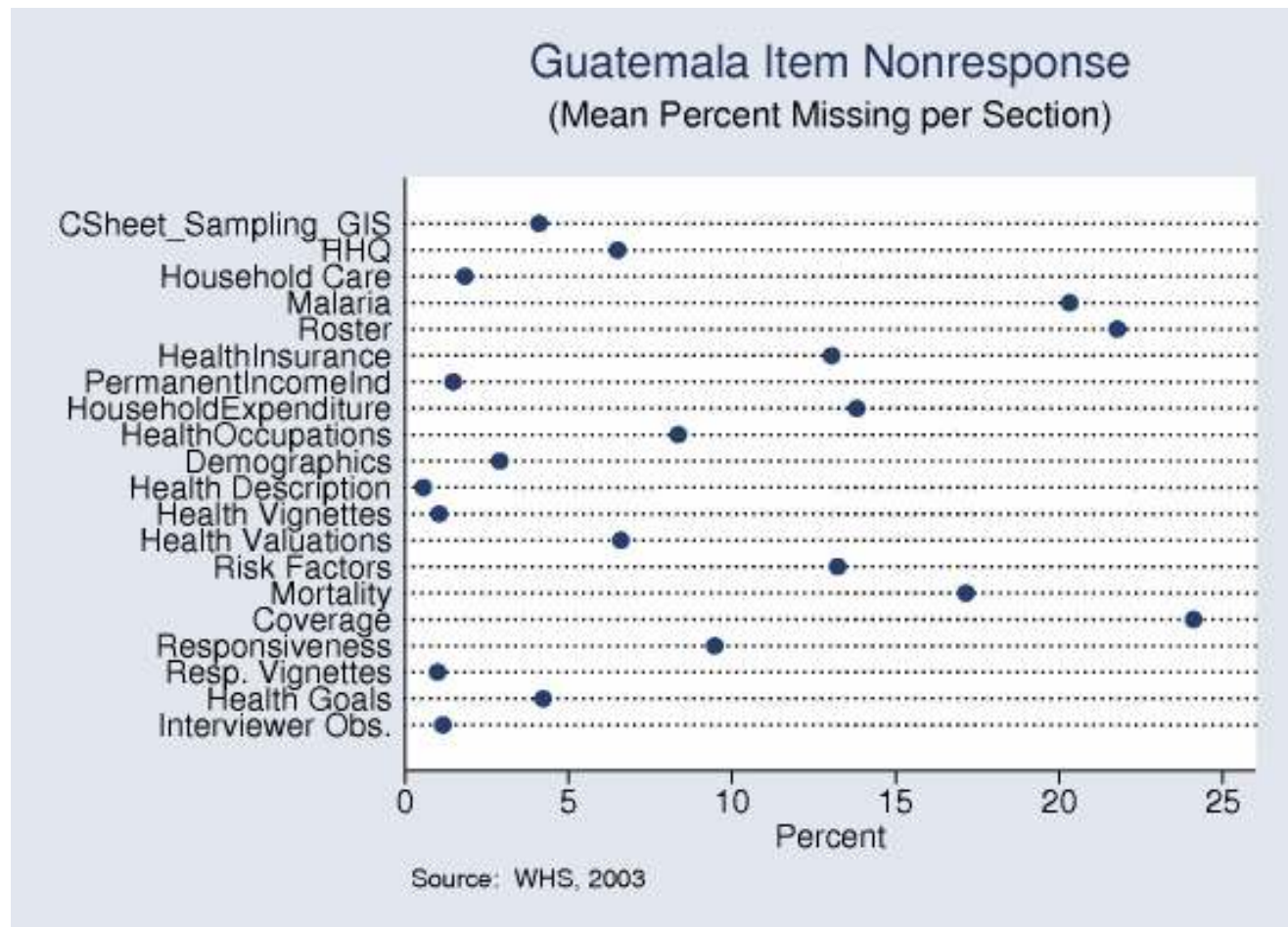
Individual

Selected	4,883
----------	-------

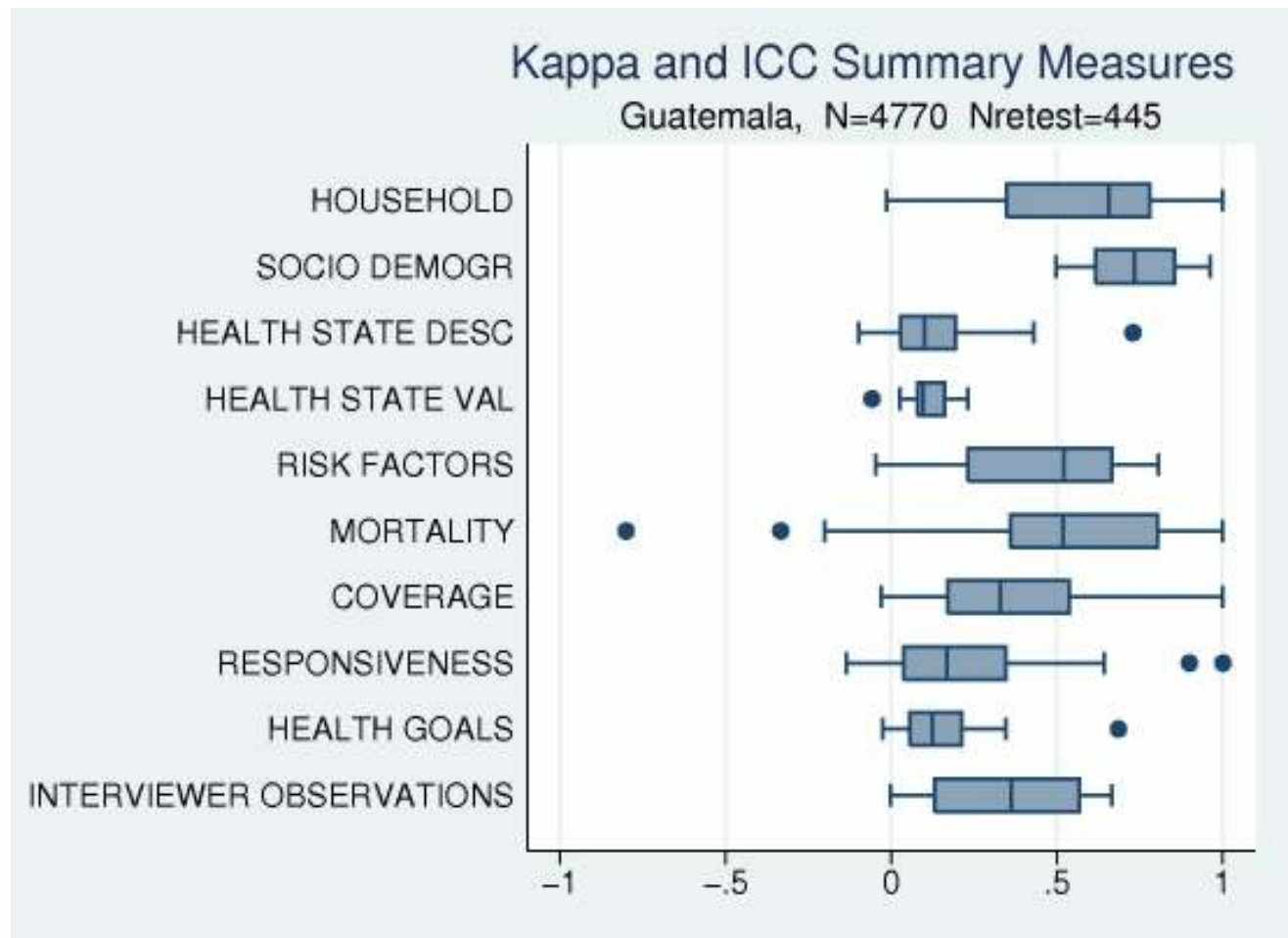
Interviewed	4,767
-------------	-------

Percentages	98
-------------	----

2.3.4 Missing data



2.3.5 Reliability



3.1 Household composition by residence and age groups according to income quintile

	Percent Rural	SE	Mean Number of									
			Household members	SE	Children < 2 years	SE	Children < 5years	SE	Children 5 -17 years	SE	Persons 18+ years	SE
Q1(poorest)	0.0	0.00	5.7	0.08	0.4	0.02	1.0	0.03	2.2	0.06	2.4	0.03
Q2	0.0	0.00	6.1	0.09	0.4	0.02	1.0	0.03	2.3	0.06	2.8	0.04
Q3	0.0	0.00	5.8	0.09	0.2	0.02	0.7	0.03	2.2	0.06	2.9	0.04
Q4	0.0	0.00	5.2	0.08	0.2	0.02	0.6	0.03	1.7	0.06	2.9	0.04
Q5(richest)	0.0	0.00	4.6	0.06	0.1	0.01	0.4	0.02	1.2	0.04	3.0	0.05
All	0.0	0.00	5.3	0.04	0.3	0.01	0.7	0.01	1.9	0.02	2.7	0.02

Note: table based on de jure members of household i.e. usual residents

Note: table is unweighted

3.2 Selected age distributions by income quintile

	Females Age 18–49	Persons Age 50+	Persons Age 60+
Q1(poorest)	842	510	291
Q2	983	586	326
Q3	975	672	323
Q4	1,029	591	297
Q5(richest)	1,062	701	365
All	4,891	3,060	1,602

Note: table based on de jure members of household i.e. usual residents

Note: table is unweighted

3.3 Characteristics of head of household by income quintile

	Mean Age of Head	SE	Median Education of Head	Percent Female Head	SE
Q1 (poorest)	42	0.52	1	8.2	0.92
Q2	44	0.51	2	7.8	0.90
Q3	45	0.51	2	10.6	1.03
Q4	44	0.49	3	12.4	1.11
Q5 (richest)	46	0.48	5	15.6	1.22
All	44	0.22	2	11.3	0.47

Education

1=no formal education

2=less than primary school

3=primary school completed

4=secondary school completed

5=high school (or equivalent) completed

6=college/pre-university/university completed

7=post graduate degree completed

Note: table based on de jure members of household i.e. usual residents

Note: table is unweighted

3.4 Household population: percent distribution of the de jure population by age, residence, marital status and education according to sex

	Male	SE	Female	SE	Missing	Total	SE
Age							
0-4	14.0	0.30	13.2	0.30		13.60	0.20
5-14	29.5	0.40	27.0	0.40		28.20	0.30
15-29	25.8	0.40	27.1	0.40		26.50	0.30
30-44	13.8	0.30	15.2	0.30		14.50	0.20
45-59	9.6	0.30	10.3	0.30		10.00	0.20
60-69	4.0	0.20	4.0	0.20		4.00	0.10
70-79	2.3	0.10	2.3	0.10		2.30	0.10
80+	0.7	0.10	0.8	0.10		0.70	0.10
Missing	0.2	0.00	0.2	0.00		0.20	0.00
Marital_Status							
Never	38.4	0.40	34.5	0.40		36.40	0.30
Currently	23.1	0.40	23.0	0.40		23.10	0.30
Separated	0.5	0.10	2.1	0.10		1.30	0.10
Divorced	0.1	0.00	0.2	0.00		0.20	0.00
Widowed	1.6	0.10	5.2	0.20		3.40	0.10
CoHabitng	11.4	0.30	11.6	0.30		11.50	0.20
Missing	24.9	0.40	23.4	0.40		24.10	0.30
Education							
NoFormal	25.5	0.40	33.4	0.40		29.60	0.30
LessthanPrimary	32.9	0.40	29.6	0.40		31.20	0.30
Primary	9.5	0.30	8.3	0.20		8.90	0.20
Secondary	9.3	0.30	7.4	0.20		8.30	0.20
HighSchool	4.9	0.20	5.0	0.20		5.00	0.10
College	2.4	0.10	2.2	0.10		2.30	0.10
PostGraduate	1.6	0.10	0.9	0.10		1.20	0.10
Missing	13.9	0.30	13.3	0.30		13.60	0.20
Total	100.0		100.0			100.00	
Number	12,671.0		13,382.0			26,053.00	
Number of Households						4,874.00	

Note: table is unweighted

3.5 Background characteristics of respondents: percent distribution of men and women by age, residence, marital status and education

	Male	SE	Female	SE	Missing	Total	SE
Age							
18-29	30.4	1.10	35.0	0.90		33.20	0.70
30-44	30.0	1.10	32.5	0.90		31.60	0.70
45-59	20.9	0.90	19.7	0.70		20.20	0.60
60-69	10.4	0.70	7.2	0.50		8.50	0.40
70-79	6.6	0.60	4.3	0.40		5.20	0.30
80+	1.7	0.30	1.1	0.20		1.30	0.20
Missing	0.1	0.10	0.1	0.10		0.10	0.00
Marital_Status							
Never	18.0	0.90	12.8	0.60		14.80	0.50
Currently	48.3	1.20	46.5	0.90		47.20	0.70
Separated	2.1	0.30	4.3	0.40		3.40	0.30
Divorced	0.3	0.10	0.5	0.10		0.40	0.10
Widowed	3.9	0.50	10.2	0.60		7.80	0.40
CoHabitng	25.3	1.00	23.2	0.80		24.00	0.60
Missing	2.1	0.30	2.6	0.30		2.40	0.20
Education							
NoFormal	30.6	1.10	40.0	0.90		36.40	0.70
LessthanPrimary	30.6	1.10	25.7	0.80		27.60	0.60
Primary	11.9	0.80	11.6	0.60		11.70	0.50
Secondary	9.1	0.70	7.4	0.50		8.10	0.40
HighSchool	7.6	0.60	6.8	0.50		7.10	0.40
College	3.5	0.40	2.6	0.30		2.90	0.20
PostGraduate	1.7	0.30	1.0	0.20		1.30	0.20
Missing	4.8	0.50	4.9	0.40		4.90	0.30
Total	100.0		100.0			100.00	
Number	1,831.0		2,939.0			4,770.00	

Note: table is unweighted

4.1 Prevalence of smoking and average daily tobacco consumption

	Current daily smoker	SE	Smoker, not daily	SE	Non-smoker	SE	Missing	Average daily tobacco consumption*	SE	Number of respondents
Sex										
Male	8.0	0.60	16.2	0.90	75.0	1.00	0.8	4.6	0.40	1,831
Female	0.9	0.20	2.6	0.30	96.1	0.40	0.4	4.6	1.10	2,939
Missing										0
Income_Quintile										
Q1	2.9	0.60	9.5	1.00	86.8	1.10	0.8	3.3	0.60	885
Q2	2.8	0.60	10.3	1.00	86.4	1.20	0.5	3.1	0.50	881
Q3	3.7	0.60	6.7	0.80	89.4	1.00	0.2	5.4	1.00	886
Q4	2.8	0.60	6.4	0.80	90.3	1.00	0.5	3.4	0.90	885
Q5	6.6	0.80	6.8	0.80	86.3	1.20	0.3	6.2	0.80	883
Missing										350
Age										
18-29	3.5	0.50	8.4	0.70	87.8	0.80	0.4	4.3	0.70	1,585
30-44	2.5	0.40	7.6	0.70	89.6	0.80	0.4	4.6	0.90	1,505
45-59	5.7	0.70	7.2	0.80	86.0	1.10	1.1	4.3	0.60	962
60-69	3.2	0.90	8.2	1.40	88.1	1.60	0.5	6.7	1.40	404
70-79	4.1	1.30	8.1	1.70	87.8	2.10	0.0	3.9	1.20	246
80+	4.7	2.60	3.1	2.20	90.6	3.60	1.6	2.7	0.30	64
Missing										4
All	3.6	0.30	7.8	0.40	88.0	0.50	0.5	4.6	0.40	4,770

* Denominator used is current daily smoker

Note: table is unweighted

4.2 Prevalence of life time abstainers, non-heavy drinkers, infrequent heavy drinkers and frequent heavy drinkers

	Life time abstainers	SE	Non-heavy drinkers	SE	Infrequent Heavy Drinkers*	SE	Frequent Heavy drinkers**	SE	Missing	Number of respondents
Sex										
Male	49.0	1.20	47.1	1.20	3.2	0.40	0.3	0.10	0.4	1,831
Female	84.5	0.70	15.1	0.70	0.2	0.10	0.0	0.00	0.3	2,939
Missing										0
Income_ Quintile										
Q1	69.0	1.60	29.5	1.50	0.8	0.30	0.2	0.20	0.5	885
Q2	70.5	1.50	27.9	1.50	1.0	0.30	0.1	0.10	0.5	881
Q3	74.8	1.50	23.8	1.40	1.1	0.40	0.1	0.10	0.1	886
Q4	73.2	1.50	24.9	1.50	1.7	0.40	0.0	0.00	0.2	885
Q5	66.3	1.60	31.8	1.60	1.8	0.40	0.1	0.10	0.0	883
Missing										350
Age										
18-29	75.8	1.10	21.6	1.00	2.1	0.40	0.2	0.10	0.3	1,585
30-44	70.5	1.20	27.6	1.20	1.5	0.30	0.1	0.10	0.3	1,505
45-59	66.8	1.50	32.0	1.50	0.4	0.20	0.0	0.00	0.7	962
60-69	64.1	2.40	35.4	2.40	0.2	0.20	0.0	0.00	0.2	404
70-79	68.3	3.00	30.9	2.90	0.8	0.60	0.0	0.00	0.0	246
80+	70.3	5.70	29.7	5.70	0.0	0.00	0.0	0.00	0.0	64
Missing										4
All	70.9	0.70	27.4	0.60	1.3	0.20	0.1	0.00	0.3	4,770

*Infrequent heavy drinkers: 1-2 days with 5 or more standard drinks per week(last 7 days)

**Frequent heavy drinkers: 3 or more days with 5 or more standard drinks per week(last 7 days)

Note: table is unweighted

4.3 Prevalence of insufficient intake of fruit and vegetables and insufficient physical activity

	Fruit and vegetable intake					Physical Activity					Number of respondents
	*Insufficient	SE	Sufficient	SE	Missing	**Insufficient	SE	Sufficient	SE	Missing	
Sex											
Male	79.6	0.90	20.4	0.90	0.0	3.7	0.40	95.5	0.50	0.8	1,831
Female	81.9	0.70	18.1	0.70	0.0	3.8	0.40	95.7	0.40	0.5	2,939
Missing											0
Income_Quintile											
Q1	86.8	1.10	13.2	1.10	0.0	1.0	0.30	98.5	0.40	0.5	885
Q2	86.5	1.20	13.5	1.20	0.0	1.4	0.40	98.3	0.40	0.3	881
Q3	84.4	1.20	15.6	1.20	0.0	2.4	0.50	97.3	0.50	0.3	886
Q4	73.1	1.50	26.9	1.50	0.0	4.1	0.70	94.8	0.70	1.1	885
Q5	73.2	1.50	26.8	1.50	0.0	9.6	1.00	90.3	1.00	0.1	883
Missing											350
Age											
18-29	79.9	1.00	20.1	1.00	0.0	3.2	0.40	96.3	0.50	0.5	1,585
30-44	80.7	1.00	19.3	1.00	0.0	3.5	0.50	96.0	0.50	0.5	1,505
45-59	82.1	1.20	17.9	1.20	0.0	2.8	0.50	96.2	0.60	1.0	962
60-69	81.7	1.90	18.3	1.90	0.0	5.0	1.10	94.6	1.10	0.5	404
70-79	82.1	2.40	17.9	2.40	0.0	6.9	1.60	93.1	1.60	0.0	246
80+	90.6	3.60	9.4	3.60	0.0	15.6	4.50	81.3	4.90	3.1	64
Missing											4
All	81.0	0.60	19.0	0.60	0.0	3.8	0.30	95.6	0.30	0.6	4,770

*Insufficient intake of fruit/vegetables: less than 5 servings of fruit/vegetables per one typical day

**Insufficient physical activity: less than 150 minutes per week(last 7 days) spent on walking/moderate activity/vigorous activity

Note: table is unweighted

4.4 Access to improved drinking-water: percent distribution of households by type of access to drinking water

	Piped into households	SE	other improved sources	SE	Total improved sources	SE	No improved sources	SE	Missing	Number of households
Income_Quintile										
Q1(poorest)	54.4	1.70	21.4	1.40	75.8	1.40	23.5	1.40	0.7	888
Q2	73.5	1.50	19.1	1.30	92.6	0.90	6.8	0.80	0.7	886
Q3	75.1	1.50	19.5	1.30	94.6	0.80	5.1	0.70	0.3	887
Q4	83.8	1.20	12.6	1.10	96.4	0.60	2.3	0.50	1.4	887
Q5(richest)	97.2	0.60	1.8	0.40	99.0	0.30	0.1	0.10	0.9	883
Missing	56.7	2.40	13.5	1.60	70.2	2.20	6.3	1.20	23.5	443
Total	74.9	0.60	14.8	0.50	89.7	0.40	7.4	0.40	2.9	4,874

other improved sources: public standpipe/protected tube well/borehole/protected dug well/protected spring/rainwater collection

no improved sources: unprotected well/unprotected spring/water taken directly from a pond or stream/tanker truck water/vendor provided water

Note: table is unweighted

4.5 Access to improved sanitation: percent distribution of households by type of sanitation facility

	Flush toilet to sewage system	SE	Other improved toilet facilities	SE	Total improved sanitation	SE	No improved sanitation	SE	Missing	Number of households
Income_Quintile										
Q1(poorest)	1.1	0.40	58.3	1.70	59.5	1.60	40.2	1.60	0.3	888
Q2	5.9	0.80	70.3	1.50	76.2	1.40	23.4	1.40	0.5	886
Q3	23.8	1.40	61.4	1.60	85.2	1.20	14.4	1.20	0.3	887
Q4	57.5	1.70	33.6	1.60	91.1	1.00	8.0	0.90	0.9	887
Q5(richest)	92.0	0.90	3.1	0.60	95.0	0.70	3.6	0.60	1.4	883
Missing	23.0	2.00	40.2	2.30	63.2	2.30	13.1	1.60	23.7	443
Total	34.8	0.70	44.9	0.70	79.7	0.60	17.5	0.50	2.8	4,874

other improved sanitation facilities: connection to septic system/pour-flush latrine/covered dry latrine(with privacy) [provided facilities not shared]
no improved sanitation: uncovered dry latrine(without privacy)/bucket latrine/no facilities(open defecation)

Note: table is unweighted

4.6 Solid Fuel use for cooking: percent distribution of households by type of cooking fuel used

	Electricity, Gas	SE	Kerosene	SE	Solid fuels on improved stove	SE	Solid fuels on traditional stove	SE	Total solid fuel use	SE	Missing	Number of households
Income_Quintile												
Q1(poorest)	0.5	0.20	0.1	0.10	0.1	0.10	98.8	0.40	98.9	0.40	0.6	888
Q2	2.5	0.50	0.0	0.00	0.3	0.20	96.4	0.60	96.7	0.60	0.8	886
Q3	17.5	1.30	0.0	0.00	0.5	0.20	81.6	1.30	82.1	1.30	0.5	887
Q4	69.4	1.50	0.0	0.00	0.3	0.20	29.4	1.50	29.8	1.50	0.8	887
Q5(richest)	96.7	0.60	0.0	0.00	0.0	0.00	2.8	0.60	2.8	0.60	0.5	883
Missing	30.7	2.20	0.0	0.00	0.2	0.20	45.8	2.40	46.0	2.40	23.3	443
Total	36.7	0.70	0.0	0.00	0.2	0.10	60.4	0.70	60.6	0.70	2.7	4,874

Note: table is unweighted

6.01 In general, rate your health today - q2000

	Very Good	SE	Good	SE	Moderate	SE	Bad	SE	Very Bad	SE	Missing	SE	N
Gender													
Male	17.3	0.0	39.1	0.0	34.0	0.0	9.1	0.0	0.3	0.0	0.2	0.0	1,831
Female	14.1	0.0	36.5	0.0	38.3	0.0	10.4	0.0	0.6	0.0	0.1	0.0	2,939
M	0.0	0.0	0.0	0.0	0.0	0.0	0.0	0.0	0.0	0.0	0.0	0.0	
Residence													
Urban	15.8	0.0	37.7	0.0	37.1	0.0	8.7	0.0	0.6	0.0	0.0	0.0	2,013
Rural	14.9	0.0	37.4	0.0	36.3	0.0	10.8	0.0	0.4	0.0	0.2	0.0	2,757
M	0.0	0.0	0.0	0.0	0.0	0.0	0.0	0.0	0.0	0.0	0.0	0.0	
Income													
Q1(poorest)	15.3	0.0	36.8	0.0	35.4	0.0	11.9	0.0	0.6	0.0	0.1	0.0	885
Q2	13.4	0.0	39.3	0.0	36.0	0.0	10.9	0.0	0.3	0.0	0.1	0.0	881
Q3	12.6	0.0	36.0	0.0	41.0	0.0	10.0	0.0	0.3	0.0	0.0	0.0	886
Q4	16.2	0.0	37.3	0.0	36.4	0.0	9.3	0.0	0.7	0.0	0.2	0.0	885
Q5(richest)	20.3	0.0	39.4	0.0	33.3	0.0	6.3	0.0	0.7	0.0	0.0	0.0	883
M	12.3	0.0	34.6	0.0	39.4	0.0	12.6	0.0	0.3	0.0	0.9	0.0	350
Age													
18-29	21.5	0.0	42.2	0.0	31.6	0.0	4.4	0.0	0.2	0.0	0.1	0.0	1,581
30-44	14.8	0.0	39.1	0.0	37.4	0.0	8.2	0.0	0.3	0.0	0.2	0.0	1,498
45-59	12.0	0.0	33.7	0.0	40.7	0.0	13.0	0.0	0.5	0.0	0.1	0.0	959
60-69	6.9	0.0	32.7	0.0	39.1	0.0	19.1	0.0	2.0	0.0	0.2	0.0	404
70-79	8.9	0.0	24.0	0.0	43.1	0.0	23.2	0.0	0.8	0.0	0.0	0.0	246
80+	3.1	0.0	20.3	0.0	43.8	0.0	31.3	0.0	1.6	0.0	0.0	0.0	64
M	11.1	0.0	61.1	0.0	27.8	0.0	0.0	0.0	0.0	0.0	0.0	0.0	18
All	730.0	0.0	1,790.0	0.0	1,747.0	0.0	472.0	0.0	24.0	0.0	7.0	0.0	4,770

6.02 Difficulty with 'work and household activities' in last 30 days - q2001

	None	SE	Mild	SE	Moderate	SE	Sever	SE	Extreme/ Cannot do	SE	Missing	SE	N
Gender													
Male	59.4	0.0	18.3	0.0	14.2	0.0	7.5	0.0	0.2	0.0	0.5	0.0	1,831
Female	54.7	0.0	18.6	0.0	18.6	0.0	6.9	0.0	0.5	0.0	0.7	0.0	2,939
M	0.0	0.0	0.0	0.0	0.0	0.0	0.0	0.0	0.0	0.0	0.0	0.0	
Residence													
Urban	57.5	0.0	17.7	0.0	17.0	0.0	6.5	0.0	0.4	0.0	0.9	0.0	2,013
Rural	55.7	0.0	19.0	0.0	16.8	0.0	7.6	0.0	0.4	0.0	0.4	0.0	2,757
M	0.0	0.0	0.0	0.0	0.0	0.0	0.0	0.0	0.0	0.0	0.0	0.0	
Income													
Q1(poorest)	53.3	0.0	19.8	0.0	16.8	0.0	9.2	0.0	0.7	0.0	0.2	0.0	885
Q2	54.8	0.0	20.0	0.0	17.3	0.0	7.3	0.0	0.3	0.0	0.3	0.0	881
Q3	57.3	0.0	16.8	0.0	17.9	0.0	7.2	0.0	0.2	0.0	0.5	0.0	886
Q4	58.6	0.0	17.1	0.0	17.4	0.0	5.8	0.0	0.3	0.0	0.8	0.0	885
Q5(richest)	61.2	0.0	17.8	0.0	14.2	0.0	5.7	0.0	0.2	0.0	1.0	0.0	883
M	49.1	0.0	20.9	0.0	19.1	0.0	8.6	0.0	0.9	0.0	1.4	0.0	350
Age													
18-29	67.7	0.0	16.1	0.0	12.5	0.0	3.0	0.0	0.0	0.0	0.7	0.0	1,581
30-44	59.9	0.0	17.4	0.0	15.5	0.0	6.4	0.0	0.3	0.0	0.5	0.0	1,498
45-59	49.0	0.0	20.3	0.0	21.6	0.0	8.4	0.0	0.2	0.0	0.4	0.0	959
60-69	36.4	0.0	24.3	0.0	24.5	0.0	13.1	0.0	0.5	0.0	1.2	0.0	404
70-79	34.6	0.0	21.5	0.0	22.4	0.0	19.5	0.0	2.0	0.0	0.0	0.0	246
80+	18.8	0.0	25.0	0.0	21.9	0.0	21.9	0.0	7.8	0.0	4.7	0.0	64
M	66.7	0.0	22.2	0.0	11.1	0.0	0.0	0.0	0.0	0.0	0.0	0.0	18
All	2,694.0	0.0	881.0	0.0	806.0	0.0	340.0	0.0	19.0	0.0	30.0	0.0	4,770

6.03 Difficulty with 'moving around' in last 30 days - q2010

	None	SE	Mild	SE	Moderate	SE	Sever	SE	Extreme/ Cannot do	SE	Missing	SE	N
Gender													
Male	80.6	0.0	9.8	0.0	4.3	0.0	5.1	0.0	0.0	0.0	0.2	0.0	1,831
Female	71.8	0.0	13.5	0.0	7.2	0.0	7.1	0.0	0.3	0.0	0.1	0.0	2,939
M	0.0	0.0	0.0	0.0	0.0	0.0	0.0	0.0	0.0	0.0	0.0	0.0	
Residence													
Urban	74.9	0.0	11.4	0.0	6.6	0.0	6.7	0.0	0.3	0.0	0.1	0.0	2,013
Rural	75.4	0.0	12.6	0.0	5.7	0.0	6.1	0.0	0.1	0.0	0.1	0.0	2,757
M	0.0	0.0	0.0	0.0	0.0	0.0	0.0	0.0	0.0	0.0	0.0	0.0	
Income													
Q1(poorest)	72.8	0.0	13.2	0.0	6.3	0.0	7.5	0.0	0.2	0.0	0.0	0.0	885
Q2	75.8	0.0	12.0	0.0	5.4	0.0	6.4	0.0	0.2	0.0	0.1	0.0	881
Q3	75.7	0.0	12.6	0.0	5.3	0.0	6.0	0.0	0.3	0.0	0.0	0.0	886
Q4	76.7	0.0	10.8	0.0	6.4	0.0	5.5	0.0	0.1	0.0	0.3	0.0	885
Q5(richest)	77.8	0.0	10.8	0.0	5.8	0.0	5.5	0.0	0.1	0.0	0.0	0.0	883
M	67.7	0.0	14.3	0.0	8.9	0.0	8.3	0.0	0.0	0.0	0.9	0.0	350
Age													
18-29	86.3	0.0	7.7	0.0	3.2	0.0	2.6	0.0	0.0	0.0	0.2	0.0	1,581
30-44	77.8	0.0	10.9	0.0	5.4	0.0	5.3	0.0	0.3	0.0	0.2	0.0	1,498
45-59	71.6	0.0	14.5	0.0	7.1	0.0	6.6	0.0	0.1	0.0	0.1	0.0	959
60-69	55.7	0.0	18.8	0.0	11.6	0.0	13.6	0.0	0.2	0.0	0.0	0.0	404
70-79	43.9	0.0	24.0	0.0	14.6	0.0	16.7	0.0	0.8	0.0	0.0	0.0	246
80+	34.4	0.0	21.9	0.0	7.8	0.0	34.4	0.0	1.6	0.0	0.0	0.0	64
M	77.8	0.0	11.1	0.0	11.1	0.0	0.0	0.0	0.0	0.0	0.0	0.0	18
All	3,586.0	0.0	576.0	0.0	290.0	0.0	302.0	0.0	9.0	0.0	7.0	0.0	4,770

6.04 Difficulty with 'vigorous activities' in last 30 days - q2011

	None	SE	Mild	SE	Moderate	SE	Sever	SE	Extreme/ Cannot do	SE	Missing	SE	N
Gender													
Male	68.5	0.0	10.4	0.0	8.6	0.0	9.1	0.0	2.9	0.0	0.4	0.0	1,831
Female	56.3	0.0	12.1	0.0	10.3	0.0	14.3	0.0	6.8	0.0	0.2	0.0	2,939
M	0.0	0.0	0.0	0.0	0.0	0.0	0.0	0.0	0.0	0.0	0.0	0.0	
Residence													
Urban	63.5	0.0	11.7	0.0	9.2	0.0	11.1	0.0	4.2	0.0	0.2	0.0	2,013
Rural	59.2	0.0	11.2	0.0	10.0	0.0	13.2	0.0	6.1	0.0	0.3	0.0	2,757
M	0.0	0.0	0.0	0.0	0.0	0.0	0.0	0.0	0.0	0.0	0.0	0.0	
Income													
Q1(poorest)	54.9	0.0	12.5	0.0	12.9	0.0	15.0	0.0	4.6	0.0	0.0	0.0	885
Q2	59.1	0.0	10.0	0.0	9.9	0.0	14.8	0.0	6.1	0.0	0.1	0.0	881
Q3	60.4	0.0	12.6	0.0	9.4	0.0	11.7	0.0	5.9	0.0	0.0	0.0	886
Q4	65.9	0.0	10.3	0.0	8.1	0.0	9.4	0.0	5.9	0.0	0.5	0.0	885
Q5(richest)	68.1	0.0	11.7	0.0	7.7	0.0	9.2	0.0	3.1	0.0	0.3	0.0	883
M	52.6	0.0	11.7	0.0	10.6	0.0	15.7	0.0	8.0	0.0	1.4	0.0	350
Age													
18-29	74.8	0.0	10.0	0.0	6.5	0.0	6.3	0.0	2.2	0.0	0.3	0.0	1,581
30-44	65.2	0.0	10.9	0.0	9.3	0.0	10.7	0.0	3.5	0.0	0.3	0.0	1,498
45-59	53.2	0.0	12.7	0.0	11.6	0.0	14.6	0.0	7.7	0.0	0.2	0.0	959
60-69	39.6	0.0	12.6	0.0	14.1	0.0	24.5	0.0	9.2	0.0	0.0	0.0	404
70-79	25.2	0.0	17.1	0.0	15.4	0.0	26.0	0.0	15.4	0.0	0.8	0.0	246
80+	10.9	0.0	9.4	0.0	15.6	0.0	35.9	0.0	28.1	0.0	0.0	0.0	64
M	66.7	0.0	16.7	0.0	16.7	0.0	0.0	0.0	0.0	0.0	0.0	0.0	18
All	2,910.0	0.0	546.0	0.0	461.0	0.0	586.0	0.0	254.0	0.0	13.0	0.0	4,770

6.05 Difficulty with 'self-care' in last 30 days - q2020

	None	SE	Mild	SE	Moderate	SE	Sever	SE	Extreme/ Cannot do	SE	Missing	SE	N
Gender													
Male	92.8	0.0	4.5	0.0	1.6	0.0	0.7	0.0	0.0	0.0	0.3	0.0	1,831
Female	89.8	0.0	6.6	0.0	2.1	0.0	1.3	0.0	0.1	0.0	0.1	0.0	2,939
M	0.0	0.0	0.0	0.0	0.0	0.0	0.0	0.0	0.0	0.0	0.0	0.0	
Residence													
Urban	93.5	0.0	4.0	0.0	1.3	0.0	0.8	0.0	0.1	0.0	0.2	0.0	2,013
Rural	89.1	0.0	7.2	0.0	2.3	0.0	1.2	0.0	0.0	0.0	0.1	0.0	2,757
M	0.0	0.0	0.0	0.0	0.0	0.0	0.0	0.0	0.0	0.0	0.0	0.0	
Income													
Q1(poorest)	86.0	0.0	9.3	0.0	3.1	0.0	1.6	0.0	0.1	0.0	0.0	0.0	885
Q2	90.0	0.0	7.2	0.0	1.6	0.0	0.9	0.0	0.1	0.0	0.2	0.0	881
Q3	91.3	0.0	5.3	0.0	2.0	0.0	1.2	0.0	0.1	0.0	0.0	0.0	886
Q4	94.5	0.0	2.9	0.0	1.0	0.0	1.0	0.0	0.1	0.0	0.5	0.0	885
Q5(richest)	96.0	0.0	2.9	0.0	0.8	0.0	0.2	0.0	0.0	0.0	0.0	0.0	883
M	83.4	0.0	9.7	0.0	4.3	0.0	1.7	0.0	0.0	0.0	0.9	0.0	350
Age													
18-29	96.3	0.0	2.8	0.0	0.5	0.0	0.3	0.0	0.0	0.0	0.1	0.0	1,581
30-44	92.5	0.0	4.8	0.0	1.8	0.0	0.7	0.0	0.1	0.0	0.2	0.0	1,498
45-59	89.2	0.0	7.1	0.0	2.1	0.0	1.3	0.0	0.1	0.0	0.3	0.0	959
60-69	83.2	0.0	10.1	0.0	3.5	0.0	3.0	0.0	0.0	0.0	0.2	0.0	404
70-79	77.2	0.0	15.9	0.0	3.3	0.0	3.3	0.0	0.4	0.0	0.0	0.0	246
80+	56.3	0.0	20.3	0.0	17.2	0.0	4.7	0.0	1.6	0.0	0.0	0.0	64
M	83.3	0.0	5.6	0.0	11.1	0.0	0.0	0.0	0.0	0.0	0.0	0.0	18
All	4,339.0	0.0	278.0	0.0	90.0	0.0	50.0	0.0	4.0	0.0	9.0	0.0	4,770

6.06 Difficulty with 'taking care of and maintaining general appearance' in last 30 days - q2021

	None	SE	Mild	SE	Moderate	SE	Sever	SE	Extreme/ Cannot do	SE	Missing	SE	N
Gender													
Male	92.3	0.0	4.8	0.0	1.8	0.0	0.7	0.0	0.0	0.0	0.5	0.0	1,831
Female	89.9	0.0	6.2	0.0	2.5	0.0	1.2	0.0	0.1	0.0	0.1	0.0	2,939
M	0.0	0.0	0.0	0.0	0.0	0.0	0.0	0.0	0.0	0.0	0.0	0.0	
Residence													
Urban	93.0	0.0	4.0	0.0	1.7	0.0	0.8	0.0	0.1	0.0	0.3	0.0	2,013
Rural	89.2	0.0	6.9	0.0	2.6	0.0	1.1	0.0	0.0	0.0	0.3	0.0	2,757
M	0.0	0.0	0.0	0.0	0.0	0.0	0.0	0.0	0.0	0.0	0.0	0.0	
Income													
Q1(poorest)	85.5	0.0	9.3	0.0	3.6	0.0	1.5	0.0	0.1	0.0	0.0	0.0	885
Q2	89.3	0.0	7.3	0.0	2.4	0.0	0.7	0.0	0.1	0.0	0.2	0.0	881
Q3	92.3	0.0	4.3	0.0	2.1	0.0	1.0	0.0	0.1	0.0	0.1	0.0	886
Q4	93.8	0.0	3.1	0.0	1.4	0.0	1.1	0.0	0.1	0.0	0.6	0.0	885
Q5(richest)	95.5	0.0	3.2	0.0	1.0	0.0	0.1	0.0	0.0	0.0	0.2	0.0	883
M	84.6	0.0	8.6	0.0	4.0	0.0	2.0	0.0	0.0	0.0	0.9	0.0	350
Age													
18-29	96.0	0.0	2.7	0.0	0.7	0.0	0.3	0.0	0.0	0.0	0.4	0.0	1,581
30-44	91.9	0.0	5.1	0.0	2.1	0.0	0.7	0.0	0.1	0.0	0.3	0.0	1,498
45-59	89.9	0.0	6.3	0.0	2.3	0.0	1.3	0.0	0.1	0.0	0.2	0.0	959
60-69	82.4	0.0	10.4	0.0	4.5	0.0	2.5	0.0	0.0	0.0	0.2	0.0	404
70-79	77.2	0.0	14.6	0.0	4.9	0.0	2.8	0.0	0.4	0.0	0.0	0.0	246
80+	57.8	0.0	18.8	0.0	17.2	0.0	4.7	0.0	1.6	0.0	0.0	0.0	64
M	88.9	0.0	0.0	0.0	11.1	0.0	0.0	0.0	0.0	0.0	0.0	0.0	18
All	4,331.0	0.0	269.0	0.0	107.0	0.0	46.0	0.0	4.0	0.0	13.0	0.0	4,770

6.07 Amount of 'bodily aches or pains' in last 30 days - q2030

	None	SE	Mild	SE	Moderate	SE	Sever	SE	Extreme/ Cannot do	SE	Missing	SE	N
Gender													
Male	45.9	0.0	24.1	0.0	15.6	0.0	13.9	0.0	0.2	0.0	0.3	0.0	1,831
Female	36.8	0.0	23.8	0.0	18.7	0.0	20.2	0.0	0.3	0.0	0.2	0.0	2,939
M	0.0	0.0	0.0	0.0	0.0	0.0	0.0	0.0	0.0	0.0	0.0	0.0	
Residence													
Urban	40.7	0.0	23.2	0.0	17.9	0.0	17.7	0.0	0.2	0.0	0.2	0.0	2,013
Rural	40.0	0.0	24.4	0.0	17.2	0.0	17.8	0.0	0.3	0.0	0.3	0.0	2,757
M	0.0	0.0	0.0	0.0	0.0	0.0	0.0	0.0	0.0	0.0	0.0	0.0	
Income													
Q1(poorest)	37.5	0.0	24.2	0.0	16.8	0.0	21.0	0.0	0.2	0.0	0.2	0.0	885
Q2	38.0	0.0	27.2	0.0	16.2	0.0	18.0	0.0	0.2	0.0	0.2	0.0	881
Q3	38.9	0.0	24.0	0.0	17.5	0.0	19.2	0.0	0.3	0.0	0.0	0.0	886
Q4	42.3	0.0	20.8	0.0	19.2	0.0	17.3	0.0	0.2	0.0	0.2	0.0	885
Q5(richest)	43.9	0.0	25.4	0.0	16.4	0.0	13.8	0.0	0.2	0.0	0.2	0.0	883
M	42.3	0.0	18.9	0.0	20.9	0.0	16.6	0.0	0.3	0.0	1.1	0.0	350
Age													
18-29	49.7	0.0	23.0	0.0	14.3	0.0	12.7	0.0	0.1	0.0	0.3	0.0	1,581
30-44	41.5	0.0	25.4	0.0	16.4	0.0	16.3	0.0	0.2	0.0	0.3	0.0	1,498
45-59	34.7	0.0	23.4	0.0	19.3	0.0	22.1	0.0	0.2	0.0	0.3	0.0	959
60-69	26.2	0.0	22.5	0.0	26.5	0.0	24.3	0.0	0.5	0.0	0.0	0.0	404
70-79	23.6	0.0	24.0	0.0	21.5	0.0	30.1	0.0	0.8	0.0	0.0	0.0	246
80+	20.3	0.0	20.3	0.0	25.0	0.0	31.3	0.0	3.1	0.0	0.0	0.0	64
M	33.3	0.0	55.6	0.0	11.1	0.0	0.0	0.0	0.0	0.0	0.0	0.0	18
All	1,922.0	0.0	1,141.0	0.0	835.0	0.0	848.0	0.0	12.0	0.0	12.0	0.0	4,770

6.08 Amount of 'bodily discomfort' in last 30 days - q2031

	None	SE	Mild	SE	Moderate	SE	Sever	SE	Extreme/ Cannot do	SE	Missing	SE	N
Gender													
Male	54.7	0.0	20.7	0.0	13.7	0.0	10.4	0.0	0.1	0.0	0.4	0.0	1,831
Female	44.8	0.0	22.0	0.0	17.5	0.0	15.0	0.0	0.3	0.0	0.3	0.0	2,939
M	0.0	0.0	0.0	0.0	0.0	0.0	0.0	0.0	0.0	0.0	0.0	0.0	
Residence													
Urban	49.1	0.0	21.2	0.0	15.5	0.0	13.5	0.0	0.3	0.0	0.4	0.0	2,013
Rural	48.3	0.0	21.7	0.0	16.4	0.0	13.1	0.0	0.1	0.0	0.4	0.0	2,757
M	0.0	0.0	0.0	0.0	0.0	0.0	0.0	0.0	0.0	0.0	0.0	0.0	
Income													
Q1(poorest)	46.1	0.0	23.6	0.0	15.8	0.0	14.0	0.0	0.1	0.0	0.3	0.0	885
Q2	47.2	0.0	23.2	0.0	16.2	0.0	12.9	0.0	0.2	0.0	0.2	0.0	881
Q3	47.3	0.0	21.8	0.0	16.4	0.0	14.3	0.0	0.2	0.0	0.0	0.0	886
Q4	50.4	0.0	18.5	0.0	15.7	0.0	14.9	0.0	0.1	0.0	0.3	0.0	885
Q5(richest)	52.7	0.0	21.9	0.0	14.3	0.0	10.2	0.0	0.3	0.0	0.7	0.0	883
M	47.4	0.0	17.7	0.0	20.6	0.0	12.9	0.0	0.3	0.0	1.1	0.0	350
Age													
18-29	58.6	0.0	19.7	0.0	12.6	0.0	8.5	0.0	0.0	0.0	0.6	0.0	1,581
30-44	49.5	0.0	22.9	0.0	15.1	0.0	12.0	0.0	0.1	0.0	0.3	0.0	1,498
45-59	42.6	0.0	21.3	0.0	19.1	0.0	16.5	0.0	0.1	0.0	0.4	0.0	959
60-69	33.7	0.0	22.5	0.0	23.0	0.0	20.3	0.0	0.5	0.0	0.0	0.0	404
70-79	34.1	0.0	22.8	0.0	17.9	0.0	24.0	0.0	1.2	0.0	0.0	0.0	246
80+	23.4	0.0	18.8	0.0	25.0	0.0	29.7	0.0	3.1	0.0	0.0	0.0	64
M	38.9	0.0	38.9	0.0	22.2	0.0	0.0	0.0	0.0	0.0	0.0	0.0	18
All	2,320.0	0.0	1,025.0	0.0	765.0	0.0	632.0	0.0	10.0	0.0	18.0	0.0	4,770

6.09 Difficulty with 'concentrating or remembering things' in last 30 days - q2050

	None	SE	Mild	SE	Moderate	SE	Sever	SE	Extreme/ Cannot do	SE	Missing	SE	N
Gender													
Male	62.9	0.0	18.2	0.0	11.1	0.0	7.3	0.0	0.0	0.0	0.5	0.0	1,831
Female	52.1	0.0	20.8	0.0	14.6	0.0	11.9	0.0	0.1	0.0	0.5	0.0	2,939
M	0.0	0.0	0.0	0.0	0.0	0.0	0.0	0.0	0.0	0.0	0.0	0.0	
Residence													
Urban	57.6	0.0	21.0	0.0	11.8	0.0	9.0	0.0	0.0	0.0	0.5	0.0	2,013
Rural	55.3	0.0	18.9	0.0	14.3	0.0	10.9	0.0	0.0	0.0	0.5	0.0	2,757
M	0.0	0.0	0.0	0.0	0.0	0.0	0.0	0.0	0.0	0.0	0.0	0.0	
Income													
Q1(poorest)	51.6	0.0	19.7	0.0	15.9	0.0	12.4	0.0	0.0	0.0	0.3	0.0	885
Q2	54.8	0.0	19.3	0.0	14.4	0.0	11.0	0.0	0.1	0.0	0.3	0.0	881
Q3	55.3	0.0	19.8	0.0	13.2	0.0	11.1	0.0	0.1	0.0	0.6	0.0	886
Q4	59.7	0.0	20.1	0.0	11.4	0.0	8.5	0.0	0.0	0.0	0.3	0.0	885
Q5(richest)	63.3	0.0	20.7	0.0	9.7	0.0	5.7	0.0	0.0	0.0	0.6	0.0	883
M	47.7	0.0	18.6	0.0	17.4	0.0	14.9	0.0	0.0	0.0	1.4	0.0	350
Age													
18-29	63.7	0.0	20.4	0.0	10.7	0.0	4.7	0.0	0.0	0.0	0.6	0.0	1,581
30-44	58.9	0.0	18.7	0.0	13.1	0.0	8.7	0.0	0.0	0.0	0.6	0.0	1,498
45-59	52.3	0.0	19.2	0.0	16.3	0.0	11.8	0.0	0.0	0.0	0.4	0.0	959
60-69	43.1	0.0	21.5	0.0	14.9	0.0	20.0	0.0	0.0	0.0	0.5	0.0	404
70-79	37.8	0.0	20.7	0.0	16.3	0.0	24.8	0.0	0.4	0.0	0.0	0.0	246
80+	25.0	0.0	25.0	0.0	17.2	0.0	31.3	0.0	1.6	0.0	0.0	0.0	64
M	55.6	0.0	27.8	0.0	5.6	0.0	11.1	0.0	0.0	0.0	0.0	0.0	18
All	2,684.0	0.0	945.0	0.0	633.0	0.0	482.0	0.0	2.0	0.0	24.0	0.0	4,770

6.10 Difficulty with 'learning a new task' in last 30 days - q2051

	None	SE	Mild	SE	Moderate	SE	Sever	SE	Extreme/ Cannot do	SE	Missing	SE	N
Gender													
Male	67.2	0.0	16.2	0.0	9.2	0.0	6.7	0.0	0.1	0.0	0.7	0.0	1,831
Female	58.4	0.0	17.5	0.0	12.6	0.0	10.9	0.0	0.1	0.0	0.5	0.0	2,939
M	0.0	0.0	0.0	0.0	0.0	0.0	0.0	0.0	0.0	0.0	0.0	0.0	
Residence													
Urban	65.6	0.0	17.5	0.0	9.0	0.0	7.4	0.0	0.0	0.0	0.5	0.0	2,013
Rural	59.0	0.0	16.6	0.0	12.9	0.0	10.7	0.0	0.1	0.0	0.6	0.0	2,757
M	0.0	0.0	0.0	0.0	0.0	0.0	0.0	0.0	0.0	0.0	0.0	0.0	
Income													
Q1(poorest)	53.7	0.0	17.7	0.0	14.0	0.0	14.1	0.0	0.0	0.0	0.5	0.0	885
Q2	57.3	0.0	18.2	0.0	13.2	0.0	10.6	0.0	0.3	0.0	0.5	0.0	881
Q3	60.2	0.0	17.7	0.0	10.8	0.0	10.5	0.0	0.1	0.0	0.7	0.0	886
Q4	68.2	0.0	15.7	0.0	10.1	0.0	5.6	0.0	0.0	0.0	0.3	0.0	885
Q5(richest)	72.4	0.0	16.0	0.0	6.7	0.0	4.4	0.0	0.0	0.0	0.6	0.0	883
M	54.3	0.0	16.0	0.0	15.4	0.0	12.6	0.0	0.3	0.0	1.4	0.0	350
Age													
18-29	69.8	0.0	15.8	0.0	9.3	0.0	4.5	0.0	0.0	0.0	0.6	0.0	1,581
30-44	65.5	0.0	15.8	0.0	10.3	0.0	7.6	0.0	0.0	0.0	0.8	0.0	1,498
45-59	56.8	0.0	17.9	0.0	13.8	0.0	11.1	0.0	0.0	0.0	0.4	0.0	959
60-69	46.3	0.0	20.8	0.0	12.9	0.0	19.3	0.0	0.2	0.0	0.5	0.0	404
70-79	42.3	0.0	18.3	0.0	15.4	0.0	23.2	0.0	0.8	0.0	0.0	0.0	246
80+	21.9	0.0	29.7	0.0	20.3	0.0	25.0	0.0	3.1	0.0	0.0	0.0	64
M	61.1	0.0	22.2	0.0	5.6	0.0	11.1	0.0	0.0	0.0	0.0	0.0	18
All	2,946.0	0.0	810.0	0.0	538.0	0.0	444.0	0.0	5.0	0.0	27.0	0.0	4,770

6.11 Difficulty with 'personal relationships or participation in the community' in last 30 days - q2060

	None	SE	Mild	SE	Moderate	SE	Sever	SE	Extreme/ Cannot do	SE	Missing	SE	N
Gender													
Male	92.5	0.0	4.8	0.0	1.6	0.0	0.4	0.0	0.0	0.0	0.7	0.0	1,831
Female	92.2	0.0	4.6	0.0	1.5	0.0	1.3	0.0	0.0	0.0	0.4	0.0	2,939
M	0.0	0.0	0.0	0.0	0.0	0.0	0.0	0.0	0.0	0.0	0.0	0.0	
Residence													
Urban	92.8	0.0	4.1	0.0	1.6	0.0	1.0	0.0	0.0	0.0	0.5	0.0	2,013
Rural	92.0	0.0	5.0	0.0	1.5	0.0	0.9	0.0	0.0	0.0	0.5	0.0	2,757
M	0.0	0.0	0.0	0.0	0.0	0.0	0.0	0.0	0.0	0.0	0.0	0.0	
Income													
Q1(poorest)	90.7	0.0	6.8	0.0	1.6	0.0	0.6	0.0	0.0	0.0	0.3	0.0	885
Q2	90.4	0.0	5.3	0.0	2.3	0.0	1.7	0.0	0.0	0.0	0.3	0.0	881
Q3	92.3	0.0	5.3	0.0	1.0	0.0	1.2	0.0	0.0	0.0	0.1	0.0	886
Q4	94.5	0.0	2.7	0.0	1.2	0.0	0.5	0.0	0.0	0.0	1.1	0.0	885
Q5(richest)	94.5	0.0	3.2	0.0	1.4	0.0	0.7	0.0	0.0	0.0	0.3	0.0	883
M	90.6	0.0	4.6	0.0	2.3	0.0	1.4	0.0	0.0	0.0	1.1	0.0	350
Age													
18-29	93.0	0.0	4.2	0.0	1.4	0.0	0.9	0.0	0.0	0.0	0.5	0.0	1,581
30-44	93.1	0.0	4.0	0.0	1.4	0.0	0.8	0.0	0.0	0.0	0.7	0.0	1,498
45-59	91.9	0.0	5.2	0.0	1.7	0.0	0.7	0.0	0.0	0.0	0.5	0.0	959
60-69	90.6	0.0	5.9	0.0	2.7	0.0	0.7	0.0	0.0	0.0	0.0	0.0	404
70-79	91.5	0.0	4.1	0.0	1.2	0.0	2.8	0.0	0.0	0.0	0.4	0.0	246
80+	79.7	0.0	15.6	0.0	1.6	0.0	3.1	0.0	0.0	0.0	0.0	0.0	64
M	88.9	0.0	11.1	0.0	0.0	0.0	0.0	0.0	0.0	0.0	0.0	0.0	18
All	4,404.0	0.0	222.0	0.0	74.0	0.0	46.0	0.0	24.0	0.0		0.0	4,770

6.12 Difficulty with 'dealing with conflicts and tensions' in last 30 days - q2061

	None	SE	Mild	SE	Moderate	SE	Sever	SE	Extreme/ Cannot do	SE	Missing	SE	N
Gender													
Male	92.5	0.0	4.5	0.0	1.7	0.0	0.4	0.0	0.2	0.0	0.7	0.0	1,831
Female	89.7	0.0	5.3	0.0	2.7	0.0	1.4	0.0	0.4	0.0	0.5	0.0	2,939
M	0.0	0.0	0.0	0.0	0.0	0.0	0.0	0.0	0.0	0.0	0.0	0.0	
Residence													
Urban	91.7	0.0	4.6	0.0	1.8	0.0	0.9	0.0	0.4	0.0	0.5	0.0	2,013
Rural	90.1	0.0	5.2	0.0	2.7	0.0	1.2	0.0	0.3	0.0	0.5	0.0	2,757
M	0.0	0.0	0.0	0.0	0.0	0.0	0.0	0.0	0.0	0.0	0.0	0.0	
Income													
Q1(poorest)	89.4	0.0	5.2	0.0	3.3	0.0	1.4	0.0	0.5	0.0	0.3	0.0	885
Q2	88.4	0.0	5.8	0.0	3.4	0.0	1.8	0.0	0.2	0.0	0.3	0.0	881
Q3	91.1	0.0	5.9	0.0	1.7	0.0	0.8	0.0	0.3	0.0	0.2	0.0	886
Q4	92.7	0.0	3.4	0.0	1.7	0.0	0.5	0.0	0.7	0.0	1.1	0.0	885
Q5(richest)	92.8	0.0	4.6	0.0	1.4	0.0	0.6	0.0	0.2	0.0	0.5	0.0	883
M	89.4	0.0	4.9	0.0	2.9	0.0	1.7	0.0	0.0	0.0	1.1	0.0	350
Age													
18-29	91.9	0.0	4.2	0.0	2.2	0.0	0.8	0.0	0.4	0.0	0.6	0.0	1,581
30-44	91.6	0.0	3.9	0.0	2.3	0.0	1.1	0.0	0.4	0.0	0.7	0.0	1,498
45-59	90.9	0.0	5.4	0.0	2.1	0.0	0.9	0.0	0.1	0.0	0.5	0.0	959
60-69	88.1	0.0	6.2	0.0	4.0	0.0	1.2	0.0	0.5	0.0	0.0	0.0	404
70-79	87.0	0.0	7.3	0.0	2.4	0.0	2.4	0.0	0.4	0.0	0.4	0.0	246
80+	71.9	0.0	23.4	0.0	1.6	0.0	3.1	0.0	0.0	0.0	0.0	0.0	64
M	88.9	0.0	11.1	0.0	0.0	0.0	0.0	0.0	0.0	0.0	0.0	0.0	18
All	4,329.0	0.0	237.0	0.0	111.0	0.0	50.0	0.0	17.0	0.0	26.0	0.0	4,770

6.13 Difficulty with 'seeing and recognizing a person you know across the road (20m)' in last 30 days - q2071

	None	SE	Mild	SE	Moderate	SE	Sever	SE	Extreme/ Cannot do	SE	Missing	SE	N
Gender													
Male	76.3	0.0	8.5	0.0	6.8	0.0	6.2	0.0	0.7	0.0	1.6	0.0	1,831
Female	72.5	0.0	10.5	0.0	8.0	0.0	6.8	0.0	0.7	0.0	1.6	0.0	2,939
M	0.0	0.0	0.0	0.0	0.0	0.0	0.0	0.0	0.0	0.0	0.0	0.0	
Residence													
Urban	74.1	0.0	9.8	0.0	8.0	0.0	6.3	0.0	0.4	0.0	1.3	0.0	2,013
Rural	73.8	0.0	9.6	0.0	7.1	0.0	6.7	0.0	0.9	0.0	1.8	0.0	2,757
M	0.0	0.0	0.0	0.0	0.0	0.0	0.0	0.0	0.0	0.0	0.0	0.0	
Income													
Q1(poorest)	72.2	0.0	10.6	0.0	6.2	0.0	7.5	0.0	1.2	0.0	2.3	0.0	885
Q2	74.9	0.0	7.6	0.0	8.1	0.0	7.0	0.0	0.9	0.0	1.5	0.0	881
Q3	71.6	0.0	11.9	0.0	7.6	0.0	7.7	0.0	0.7	0.0	0.7	0.0	886
Q4	76.8	0.0	9.3	0.0	6.8	0.0	5.3	0.0	0.3	0.0	1.5	0.0	885
Q5(richest)	77.1	0.0	8.9	0.0	7.5	0.0	4.8	0.0	0.2	0.0	1.5	0.0	883
M	66.6	0.0	10.3	0.0	11.1	0.0	8.0	0.0	0.9	0.0	3.1	0.0	350
Age													
18-29	87.4	0.0	5.0	0.0	3.1	0.0	2.8	0.0	0.3	0.0	1.4	0.0	1,581
30-44	81.0	0.0	9.1	0.0	5.0	0.0	2.8	0.0	0.1	0.0	1.9	0.0	1,498
45-59	62.3	0.0	14.5	0.0	10.9	0.0	9.6	0.0	0.8	0.0	1.9	0.0	959
60-69	50.0	0.0	15.6	0.0	15.8	0.0	16.3	0.0	1.5	0.0	0.7	0.0	404
70-79	42.3	0.0	15.4	0.0	19.1	0.0	17.5	0.0	4.1	0.0	1.6	0.0	246
80+	21.9	0.0	7.8	0.0	25.0	0.0	39.1	0.0	4.7	0.0	1.6	0.0	64
M	77.8	0.0	11.1	0.0	11.1	0.0	0.0	0.0	0.0	0.0	0.0	0.0	18
All	3,527.0	0.0	463.0	0.0	358.0	0.0	313.0	0.0	33.0	0.0	76.0	0.0	4,770

6.14 Difficulty with 'seeing an object at arm's length or in reading' in last 30 days - q2072

	None	SE	Mild	SE	Moderate	SE	Sever	SE	Extreme/ Cannot do	SE	Missing	SE	N
Gender													
Male	76.4	0.0	9.6	0.0	6.6	0.0	5.4	0.0	0.4	0.0	1.6	0.0	1,831
Female	75.3	0.0	10.8	0.0	6.8	0.0	5.1	0.0	0.3	0.0	1.6	0.0	2,939
M	0.0	0.0	0.0	0.0	0.0	0.0	0.0	0.0	0.0	0.0	0.0	0.0	
Residence													
Urban	74.3	0.0	11.4	0.0	7.8	0.0	4.9	0.0	0.2	0.0	1.3	0.0	2,013
Rural	76.8	0.0	9.6	0.0	5.9	0.0	5.5	0.0	0.4	0.0	1.8	0.0	2,757
M	0.0	0.0	0.0	0.0	0.0	0.0	0.0	0.0	0.0	0.0	0.0	0.0	
Income													
Q1(poorest)	79.2	0.0	9.2	0.0	4.5	0.0	4.4	0.0	0.5	0.0	2.3	0.0	885
Q2	77.8	0.0	9.8	0.0	6.2	0.0	4.5	0.0	0.2	0.0	1.5	0.0	881
Q3	74.4	0.0	9.9	0.0	7.6	0.0	7.1	0.0	0.3	0.0	0.7	0.0	886
Q4	74.2	0.0	11.4	0.0	7.1	0.0	5.2	0.0	0.6	0.0	1.5	0.0	885
Q5(richest)	75.1	0.0	12.1	0.0	6.9	0.0	4.3	0.0	0.1	0.0	1.5	0.0	883
M	70.9	0.0	8.9	0.0	10.0	0.0	6.9	0.0	0.3	0.0	3.1	0.0	350
Age													
18-29	91.1	0.0	4.2	0.0	2.0	0.0	1.1	0.0	0.1	0.0	1.4	0.0	1,581
30-44	83.6	0.0	8.4	0.0	3.6	0.0	2.3	0.0	0.1	0.0	1.9	0.0	1,498
45-59	57.2	0.0	17.3	0.0	12.1	0.0	11.1	0.0	0.4	0.0	1.9	0.0	959
60-69	55.0	0.0	17.6	0.0	15.3	0.0	10.6	0.0	0.7	0.0	0.7	0.0	404
70-79	47.6	0.0	19.1	0.0	17.1	0.0	12.6	0.0	2.0	0.0	1.6	0.0	246
80+	29.7	0.0	20.3	0.0	20.3	0.0	26.6	0.0	1.6	0.0	1.6	0.0	64
M	66.7	0.0	22.2	0.0	11.1	0.0	0.0	0.0	0.0	0.0	0.0	0.0	18
All	3,613.0	0.0	494.0	0.0	321.0	0.0	250.0	0.0	16.0	0.0	76.0	0.0	4,770

6.15 Problem with 'sleeping' in last 30 days - q2080

	None	SE	Mild	SE	Moderate	SE	Sever	SE	Extreme/ Cannot do	SE	Missing	SE	N
Gender													
Male	71.2	0.0	13.3	0.0	9.7	0.0	5.5	0.0	0.0	0.0	0.4	0.0	1,831
Female	65.3	0.0	13.9	0.0	11.7	0.0	8.7	0.0	0.1	0.0	0.4	0.0	2,939
M	0.0	0.0	0.0	0.0	0.0	0.0	0.0	0.0	0.0	0.0	0.0	0.0	
Residence													
Urban	65.4	0.0	14.2	0.0	11.5	0.0	8.4	0.0	0.1	0.0	0.4	0.0	2,013
Rural	69.1	0.0	13.3	0.0	10.5	0.0	6.8	0.0	0.0	0.0	0.3	0.0	2,757
M	0.0	0.0	0.0	0.0	0.0	0.0	0.0	0.0	0.0	0.0	0.0	0.0	
Income													
Q1(poorest)	67.8	0.0	13.6	0.0	12.5	0.0	5.8	0.0	0.0	0.0	0.3	0.0	885
Q2	69.0	0.0	12.8	0.0	10.4	0.0	7.5	0.0	0.0	0.0	0.2	0.0	881
Q3	70.0	0.0	13.7	0.0	8.9	0.0	7.3	0.0	0.0	0.0	0.1	0.0	886
Q4	69.2	0.0	12.0	0.0	10.5	0.0	7.7	0.0	0.1	0.0	0.6	0.0	885
Q5(richest)	65.2	0.0	14.6	0.0	11.7	0.0	8.0	0.0	0.1	0.0	0.3	0.0	883
M	58.6	0.0	17.7	0.0	12.3	0.0	10.3	0.0	0.0	0.0	1.1	0.0	350
Age													
18-29	77.9	0.0	10.4	0.0	7.1	0.0	4.2	0.0	0.0	0.0	0.3	0.0	1,581
30-44	71.0	0.0	13.1	0.0	9.6	0.0	5.7	0.0	0.1	0.0	0.5	0.0	1,498
45-59	59.7	0.0	15.0	0.0	14.3	0.0	10.3	0.0	0.1	0.0	0.5	0.0	959
60-69	52.0	0.0	16.3	0.0	16.1	0.0	15.3	0.0	0.0	0.0	0.2	0.0	404
70-79	45.9	0.0	22.8	0.0	20.7	0.0	10.6	0.0	0.0	0.0	0.0	0.0	246
80+	23.4	0.0	32.8	0.0	17.2	0.0	26.6	0.0	0.0	0.0	0.0	0.0	64
M	77.8	0.0	16.7	0.0	5.6	0.0	0.0	0.0	0.0	0.0	0.0	0.0	18
All	3,221.0	0.0	651.0	0.0	521.0	0.0	357.0	0.0	2.0	0.0	18.0	0.0	4,770

6.16 Problem with 'feeling rested and refreshed' in last 30 days - q2081

	None	SE	Mild	SE	Moderate	SE	Sever	SE	Extreme/ Cannot do	SE	Missing	SE	N
Gender													
Male	58.1	0.0	21.3	0.0	12.7	0.0	7.3	0.0	0.1	0.0	0.5	0.0	1,831
Female	52.4	0.0	20.7	0.0	15.4	0.0	11.0	0.0	0.2	0.0	0.4	0.0	2,939
M	0.0	0.0	0.0	0.0	0.0	0.0	0.0	0.0	0.0	0.0	0.0	0.0	
Residence													
Urban	53.7	0.0	20.7	0.0	14.8	0.0	10.1	0.0	0.2	0.0	0.5	0.0	2,013
Rural	55.2	0.0	21.0	0.0	14.1	0.0	9.2	0.0	0.1	0.0	0.4	0.0	2,757
M	0.0	0.0	0.0	0.0	0.0	0.0	0.0	0.0	0.0	0.0	0.0	0.0	
Income													
Q1(poorest)	50.1	0.0	23.2	0.0	15.0	0.0	11.2	0.0	0.1	0.0	0.5	0.0	885
Q2	53.5	0.0	21.5	0.0	14.8	0.0	10.1	0.0	0.0	0.0	0.2	0.0	881
Q3	57.0	0.0	20.7	0.0	12.9	0.0	9.4	0.0	0.0	0.0	0.1	0.0	886
Q4	58.1	0.0	18.9	0.0	13.2	0.0	8.9	0.0	0.2	0.0	0.7	0.0	885
Q5(richest)	56.3	0.0	19.8	0.0	14.9	0.0	8.2	0.0	0.3	0.0	0.5	0.0	883
M	49.4	0.0	22.3	0.0	17.1	0.0	9.7	0.0	0.0	0.0	1.4	0.0	350
Age													
18-29	63.9	0.0	19.3	0.0	10.4	0.0	5.9	0.0	0.0	0.0	0.4	0.0	1,581
30-44	56.7	0.0	20.0	0.0	14.0	0.0	8.5	0.0	0.1	0.0	0.7	0.0	1,498
45-59	46.1	0.0	22.9	0.0	18.6	0.0	11.6	0.0	0.3	0.0	0.5	0.0	959
60-69	44.6	0.0	21.3	0.0	19.6	0.0	14.6	0.0	0.0	0.0	0.0	0.0	404
70-79	38.2	0.0	24.4	0.0	18.7	0.0	18.3	0.0	0.4	0.0	0.0	0.0	246
80+	18.8	0.0	35.9	0.0	12.5	0.0	32.8	0.0	0.0	0.0	0.0	0.0	64
M	83.3	0.0	16.7	0.0	0.0	0.0	0.0	0.0	0.0	0.0	0.0	0.0	18
All	2,603.0	0.0	997.0	0.0	686.0	0.0	456.0	0.0	6.0	0.0	22.0	0.0	4,770

6.17 Problem with 'feeling sad, low, or depressed' in last 30 days - q2090

	None	SE	Mild	SE	Moderate	SE	Sever	SE	Extreme/ Cannot do	SE	Missing	SE	N
Gender													
Male	66.7	0.0	17.8	0.0	8.8	0.0	5.9	0.0	0.1	0.0	0.7	0.0	1,831
Female	52.0	0.0	22.4	0.0	12.7	0.0	11.9	0.0	0.3	0.0	0.6	0.0	2,939
M	0.0	0.0	0.0	0.0	0.0	0.0	0.0	0.0	0.0	0.0	0.0	0.0	
Residence													
Urban	53.3	0.0	22.0	0.0	13.8	0.0	9.9	0.0	0.3	0.0	0.7	0.0	2,013
Rural	60.8	0.0	19.7	0.0	9.4	0.0	9.4	0.0	0.1	0.0	0.6	0.0	2,757
M	0.0	0.0	0.0	0.0	0.0	0.0	0.0	0.0	0.0	0.0	0.0	0.0	
Income													
Q1(poorest)	58.2	0.0	21.6	0.0	9.9	0.0	9.6	0.0	0.2	0.0	0.5	0.0	885
Q2	60.8	0.0	19.3	0.0	8.9	0.0	10.6	0.0	0.0	0.0	0.5	0.0	881
Q3	61.2	0.0	19.8	0.0	9.7	0.0	8.6	0.0	0.1	0.0	0.7	0.0	886
Q4	56.3	0.0	18.2	0.0	14.1	0.0	9.9	0.0	0.2	0.0	1.2	0.0	885
Q5(richest)	55.8	0.0	23.2	0.0	11.3	0.0	8.8	0.0	0.5	0.0	0.3	0.0	883
M	47.1	0.0	23.7	0.0	16.6	0.0	11.1	0.0	0.3	0.0	1.1	0.0	350
Age													
18-29	65.7	0.0	19.2	0.0	8.9	0.0	5.8	0.0	0.1	0.0	0.4	0.0	1,581
30-44	59.7	0.0	20.0	0.0	9.9	0.0	9.1	0.0	0.2	0.0	1.0	0.0	1,498
45-59	51.1	0.0	22.2	0.0	13.8	0.0	11.8	0.0	0.3	0.0	0.8	0.0	959
60-69	46.8	0.0	21.5	0.0	15.3	0.0	15.6	0.0	0.2	0.0	0.5	0.0	404
70-79	42.3	0.0	25.2	0.0	16.7	0.0	15.4	0.0	0.4	0.0	0.0	0.0	246
80+	29.7	0.0	25.0	0.0	18.8	0.0	26.6	0.0	0.0	0.0	0.0	0.0	64
M	77.8	0.0	22.2	0.0	0.0	0.0	0.0	0.0	0.0	0.0	0.0	0.0	18
All	2,749.0	0.0	985.0	0.0	535.0	0.0	459.0	0.0	10.0	0.0	32.0	0.0	4,770

6.18 Problem with 'worry or anxiety' in last 30 days - q2091

	None	SE	Mild	SE	Moderate	SE	Sever	SE	Extreme/ Cannot do	SE	Missing	SE	N
Gender													
Male	60.5	0.0	19.2	0.0	11.1	0.0	8.0	0.0	0.1	0.0	1.0	0.0	1,831
Female	50.3	0.0	21.3	0.0	14.1	0.0	12.9	0.0	0.3	0.0	1.1	0.0	2,939
M	0.0	0.0	0.0	0.0	0.0	0.0	0.0	0.0	0.0	0.0	0.0	0.0	
Residence													
Urban	50.6	0.0	21.0	0.0	15.2	0.0	11.6	0.0	0.3	0.0	1.3	0.0	2,013
Rural	56.8	0.0	20.2	0.0	11.3	0.0	10.6	0.0	0.1	0.0	0.9	0.0	2,757
M	0.0	0.0	0.0	0.0	0.0	0.0	0.0	0.0	0.0	0.0	0.0	0.0	
Income													
Q1(poorest)	53.8	0.0	22.5	0.0	12.0	0.0	10.8	0.0	0.2	0.0	0.7	0.0	885
Q2	57.2	0.0	18.7	0.0	12.5	0.0	10.8	0.0	0.0	0.0	0.8	0.0	881
Q3	58.0	0.0	18.7	0.0	11.1	0.0	10.8	0.0	0.2	0.0	1.1	0.0	886
Q4	52.3	0.0	18.9	0.0	14.8	0.0	12.1	0.0	0.2	0.0	1.7	0.0	885
Q5(richest)	54.1	0.0	22.3	0.0	13.1	0.0	9.1	0.0	0.3	0.0	1.0	0.0	883
M	43.1	0.0	24.3	0.0	16.0	0.0	14.6	0.0	0.6	0.0	1.4	0.0	350
Age													
18-29	63.1	0.0	19.1	0.0	10.2	0.0	6.6	0.0	0.1	0.0	0.8	0.0	1,581
30-44	53.8	0.0	20.5	0.0	12.3	0.0	11.9	0.0	0.1	0.0	1.4	0.0	1,498
45-59	48.6	0.0	20.3	0.0	16.0	0.0	13.3	0.0	0.5	0.0	1.3	0.0	959
60-69	44.8	0.0	22.0	0.0	15.8	0.0	16.3	0.0	0.0	0.0	1.0	0.0	404
70-79	42.3	0.0	26.8	0.0	15.9	0.0	13.4	0.0	0.8	0.0	0.8	0.0	246
80+	28.1	0.0	23.4	0.0	23.4	0.0	25.0	0.0	0.0	0.0	0.0	0.0	64
M	72.2	0.0	27.8	0.0	0.0	0.0	0.0	0.0	0.0	0.0	0.0	0.0	18
All	2,586.0	0.0	979.0	0.0	617.0	0.0	525.0	0.0	11.0	0.0	52.0	0.0	4,770

7.1 Self-reported utilization of health services and perceived unmet need

	<u>Ambulatory Adult</u>		<u>Ambulatory Child</u>		<u>Inpatient Adult</u>		<u>Inpatient Child</u>		<u>Informal Care</u>		<u>Unmet Care</u>		<u>Non use</u>	
	%	SE	%	SE	%	SE	%	SE	%	SE	%	SE	%	SE
Sex														
Female	46.9	1.0	21.5	0.8	2.8	0.3	0.8	0.2	0.7	0.2	0.8	0.2	26.6	0.8
Male	36.4	1.2	16.8	0.9	1.8	0.3	0.6	0.2	0.2	0.1	0.3	0.1	43.8	1.2
Area of Residence														
Urban	51.2	1.2	16.4	0.9	3.0	0.4	0.9	0.2	0.6	0.2	0.5	0.2	27.5	1.0
Rural	37.0	0.9	22.0	0.8	2.0	0.3	0.6	0.2	0.5	0.1	0.7	0.2	37.3	0.9
Age Group														
18-29y	36.8	1.2	29.3	1.2	2.5	0.4	0.9	0.2	0.8	0.2	0.7	0.2	28.9	1.2
30-44y	39.9	1.3	26.9	1.2	1.8	0.4	1.1	0.3	0.4	0.2	0.7	0.2	29.3	1.2
45-59y	49.7	1.6	6.6	0.8	2.6	0.5	0.3	0.2	0.2	0.2	0.4	0.2	40.1	1.6
60-69y	53.1	2.5	1.0	0.5	3.4	0.9	0.0	0.0	0.5	0.4	0.5	0.4	41.5	2.5
70+y	53.0	3.0	0.3	0.4	2.8	1.0	0.0	0.0	0.7	0.5	0.3	0.4	42.9	2.9
Education Years														
0	37.6	1.6	16.7	1.3	2.4	0.5	0.6	0.2	0.9	0.3	1.0	0.3	40.9	1.7
1-5	40.6	1.4	23.1	1.2	2.4	0.4	0.8	0.2	0.5	0.2	0.5	0.2	32.1	1.3
6-11	48.1	1.6	21.1	1.3	2.3	0.5	1.0	0.3	0.2	0.1	0.1	0.1	27.2	1.4
12+	59.4	2.1	14.2	1.5	2.8	0.7	0.4	0.3	0.4	0.3	0.6	0.3	22.3	1.8
Income Quintiles														
Q1	28.0	1.5	26.4	1.5	1.3	0.4	0.6	0.3	0.9	0.3	1.4	0.4	41.3	1.7
Q2	33.3	1.6	23.9	1.5	1.2	0.4	0.9	0.3	0.4	0.2	0.5	0.2	39.8	1.7
Q3	41.0	1.7	19.2	1.4	2.6	0.5	0.8	0.3	0.0	0.0	0.4	0.2	36.0	1.6
Q4	50.2	1.7	17.0	1.3	4.1	0.7	1.1	0.4	0.9	0.3	0.1	0.1	26.5	1.5
Q5	60.5	1.7	12.9	1.2	2.9	0.6	0.4	0.2	0.4	0.2	0.5	0.2	22.4	1.5
Ownership														
Government	49.9	1.2	30.0	1.1	4.7	0.5	1.5	0.3	0.4	0.2	0.6	0.2	12.9	0.8
Private	68.3	1.4	18.8	1.1	2.5	0.5	0.3	0.2	0.9	0.3	0.4	0.2	8.8	0.8
NGO	71.4	7.0	23.8	6.6	0.0	0.0	0.0	0.0	2.4	2.4	0.0	0.0	2.4	2.4
Other	40.0	11.0	40.0	11.0	0.0	0.0	5.0	4.9	15.0	8.0	0.0	0.0	0.0	0.0
TOTAL	42.8	0.7	19.7	0.6	2.4	0.2	0.7	0.1	0.5	0.1	0.6	0.1	33.3	0.7

This table presents the percent of people reporting utilization of health services when they last needed care. It combines information from Q7000, Q7001 and Q7016. Utilization was recorded in the WHS in three separate categories: ambulatory care, hospital inpatient care, and informal care. Time cut-offs for utilization recall used here are 1 year for ambulatory care and informal care, and 3 years for hospital inpatient care. Utilization of ambulatory and inpatient care services

have been further sub-divided into "adult" and "child" categories. In addition to utilization, two other related aspects are being reported here - unmet need and non-use (regardless of expressed need) of health services. Unmet need was estimated on the basis of responses to Q7000 and Q7004. Non-use of health services is simply the percent of respondents who reported no need in Q7000 or did not utilize services in the time cut-offs mentioned above.

Results are reported for the total WHS sample (category: "TOTAL"), and by the following sample sub-groups: sex, area of residence, age group, years of education, income quintiles, and ownership (of health facility). Mean values and standard errors (SE) are reported for each category.

Sub-groups common to other tables were constructed in the same manner. Common sub-groups include sex (Q1001), area of residence (Q0104), age group (regrouping of reported age in Q1002), years of education (Q1010) and income quintiles. To determine income and subsequently income quintiles, an asset index was constructed for each household using responses to section 0700 on "Permanent Income Indicators" from the WHS household questionnaire.

Ownership was constructed uniquely for the responsiveness section's tables. There are four categories of ownership: "Operated by the government" (Government), "Privately operated" (Private), "NGO" and "Other". To construct the ownership sub-group, information was combined from (a) Q7204, Q7205 and Q7301 for those utilizing ambulatory services, and (b) Q7200, Q7201 and Q7401 for those utilizing hospital inpatient services.

7.2 Patient assessed characteristics of ambulatory health services

	Patients visiting a medical doctor, of those visiting any health care provider		Patients rating characteristics of health care provider as adequate/more than adequate						Mean time taken to reach health facility (in minutes)		Patients using private car or motorcycle to reach facility		Mean cost for an ambulatory care visit (local currency)		Percent of population perceiving discrimination	
	%	SE	%	SE	%	SE	%	SE	Minutes	SE	%	SE	mean cost	SE	%	SE
Sex																
Female	60.7	1.4	94.5	0.6	93.0	0.7	90.0	0.8	45.7	2.1	15.7	1.0	223.3	16.5	6.7	0.7
Male	56.9	1.8	93.4	0.9	91.2	1.0	88.5	1.2	50.9	2.9	19.7	1.5	219.8	15.8	9.9	1.1
Area of Residence																
Urban	72.0	1.6	95.7	0.7	94.8	0.8	91.2	1.0	36.5	2.2	22.0	1.5	283.9	18.8	9.3	1.0
Rural	51.4	1.4	93.1	0.7	90.7	0.8	88.4	0.9	54.5	2.3	14.1	1.0	182.2	15.5	6.9	0.7
Age Group																
18-29y	53.2	1.9	93.6	0.9	90.0	1.2	89.6	1.2	41.3	2.3	15.3	1.4	157.6	10.6	7.8	1.0
30-44y	56.2	1.9	92.5	1.0	91.7	1.1	88.3	1.2	48.7	2.9	15.8	1.4	224.4	26.3	8.5	1.1
45-59y	67.0	2.3	95.1	1.1	95.1	1.1	88.8	1.6	52.9	3.6	15.3	1.8	228.7	17.9	7.6	1.3
60-69y	71.0	3.6	98.2	1.0	94.5	1.8	92.5	2.1	55.4	6.9	24.8	3.4	366.1	61.6	5.5	1.8
70+y	70.9	4.2	96.6	1.6	96.6	1.6	93.2	2.3	49.2	7.2	32.2	4.4	365.2	68.4	8.4	2.5
Education Years																
0	59.9	2.4	95.5	1.0	93.3	1.2	93.1	1.2	48.3	3.2	14.5	1.7	208.5	38.7	7.3	1.3
1-5	55.3	2.0	94.7	0.9	93.2	1.0	89.4	1.3	51.7	3.2	14.6	1.4	218.8	17.9	7.0	1.0
6-11	65.3	2.4	96.5	0.9	93.7	1.2	91.6	1.4	42.2	3.0	17.7	1.9	201.5	18.2	9.2	1.4
12+	76.3	2.9	95.5	1.4	95.5	1.4	92.2	1.8	36.5	3.8	41.9	3.4	335.6	38.9	9.1	1.9
Income Quintiles																
Q1	43.9	2.4	90.7	1.4	87.5	1.6	85.2	1.8	52.0	3.4	4.7	1.0	135.5	37.7	7.3	1.3
Q2	50.6	2.5	93.4	1.2	91.8	1.4	89.8	1.5	49.0	3.6	12.9	1.7	146.0	13.5	7.6	1.3
Q3	57.9	2.5	94.0	1.2	91.4	1.4	87.3	1.7	45.5	3.3	14.7	1.8	200.2	16.0	8.3	1.4
Q4	70.3	2.4	94.7	1.2	95.2	1.1	91.7	1.5	47.3	3.6	19.2	2.1	276.7	26.7	6.4	1.3
Q5	76.9	2.3	97.3	0.9	97.3	0.9	94.3	1.3	40.3	3.4	37.1	2.6	347.2	30.4	9.4	1.6
Condition																
Child-Visit	48.2	2.3	92.2	1.3	90.0	1.4	89.5	1.4	39.9	2.5	10.0	1.4	135.1	13.8	8.0	1.3
Preventive	44.5	4.4	94.4	2.1	90.9	2.6	93.4	2.3	35.9	4.6	6.3	2.2	80.1	16.5	1.6	1.1
Childbirth	38.5	13.5	100.0	0.0	76.9	11.7	72.7	13.4	17.2	7.8	20.0	12.6	173.4	29.9	0.0	0.0
Acute	56.3	2.1	91.5	1.2	90.5	1.2	88.5	1.4	40.7	2.4	10.3	1.3	168.3	27.8	9.6	1.2
Injury	62.0	5.5	95.0	2.4	93.8	2.7	86.3	3.8	59.2	8.0	36.3	5.4	205.0	28.8	3.8	2.1
Chronic	74.0	5.0	96.2	2.2	92.3	3.0	91.0	3.2	49.3	7.8	13.5	4.0	354.5	57.6	5.1	2.5

	Patients visiting a medical doctor, of those visiting any health care provider		Patients rating characteristics of health care provider as adequate/more than adequate						Mean time taken to reach health facility (in minutes)		Patients using private car or motorcycle to reach facility		Mean cost for an ambulatory care visit (local currency)		Percent of population perceiving discrimination	
	%	SE	%	SE	%	SE	%	SE	Minutes	SE	%	SE	mean cost	SE	%	SE
Other	63.3	1.5	94.8	0.7	92.9	0.8	89.0	1.0	52.5	2.6	21.1	1.3	257.1	16.1	8.0	0.8
Ownership																
Government	52.9	1.6	91.1	0.9	88.7	1.0	86.7	1.1	43.7	2.2	10.1	1.0	79.8	5.9	8.9	0.9
Private	66.2	1.5	97.0	0.5	95.8	0.6	92.0	0.9	52.6	2.6	24.4	1.4	335.7	20.4	6.7	0.8
NGO	65.9	7.4	97.6	2.4	97.6	2.4	92.5	4.2	32.5	6.4	9.8	4.6	93.3	21.0	5.0	3.4
Other	26.7	11.4	86.7	8.8	93.3	6.4	85.7	9.4	49.3	15.0	0.0	0.0	64.0	14.5	6.7	6.4
Self-Assessed Health																
Very-Good	51.2	3.0	96.6	1.1	95.2	1.2	95.2	1.2	43.6	3.3	19.7	2.3	173.5	24.0	7.1	1.5
Good	58.7	1.8	95.1	0.8	92.2	1.0	90.0	1.1	46.0	2.6	16.6	1.4	189.2	12.5	7.5	1.0
Moderate	61.4	1.8	93.0	0.9	91.9	1.0	88.6	1.2	51.0	3.0	17.3	1.4	250.8	24.0	8.0	1.0
Bad	64.0	3.3	90.7	2.0	90.2	2.0	82.9	2.6	47.7	4.1	14.8	2.4	292.5	47.3	8.8	1.9
Very-Bad	76.9	11.7	100.0	0.0	91.7	8.0	90.9	8.7	35.1	7.4	23.1	11.7	290.2	90.2	15.4	10.0
TOTAL	59.3	1.1	94.1	0.5	92.3	0.6	89.5	0.7	47.6	1.8	17.2	0.8	222.0	12.1	7.8	0.6

This table looks at various characteristics of a visit to an ambulatory care facility, for those who utilized such services in the previous 12 months (Q7204 and Q7205). Characteristics of a visit reported here include:

- (1) The percent of patients visiting a medical doctor (of those visiting any ambulatory provider) (Q7302).
- (2) Patients' rating of *skills*, *equipment*, and *drug supplies* of the provider as "adequate": percent of patients who reported "Yes" to questions Q7304, Q7305 and Q7306, respectively.
- (3) Barriers or facilitators to care access have been reported here for those who utilized ambulatory care services in the last 12 months. They include:
 - (a) *Mean time taken to reach facility*: patient reported times from Q7307 were used to calculate averages across sample sub-groups.
 - (b) *Patients using private motor vehicles*: percent of patients who reported using a "private car or motorcycle" to get to the facility in Q7308.
 - (c) *Mean cost of visit*: patient reported costs in Q7309-Q7313 were summed up for an individual and then averaged across sample sub-groups.
 - (d) *Perceived discrimination*: percent of patients who reported "Yes" to any form of discrimination listed in Q7328-Q7334.

Results are reported for the total WHS sample (category: "TOTAL"), and by the following sample sub-groups: sex, area of residence, age group, years of education, income quintiles, reason for seeking care (condition), ownership (of health facility), and self-assessed health. Mean values and standard errors (SE) are reported for each category.

Sub-groups common to other tables were constructed in the same manner. Common sub-groups include: sex (Q1001), area of residence (Q0104), age group (regrouping of reported age in Q1002), years of education (Q1010) and income quintiles. To determine income and subsequently income quintiles, an asset index was constructed for each household using responses to section 0700 on "Permanent Income Indicators" from the WHS household questionnaire.

Ownership, condition and self-assessed health sub-groups were constructed uniquely for the responsiveness section's tables. There are four categories of ownership: "Operated by the government" (Government), "Privately operated" (Private), "NGO" and "Other". To construct the ownership sub-group, information was combined from (a) Q7204, Q7205 and Q7301 for those utilizing ambulatory services, and (b) Q7200, Q7201 and Q7401 for those utilizing hospital inpatient services. The sub-group "Condition" used and regrouped information from Q7003 ("Which reason best describes why you [your child] last needed health care?") into 6 categories. The six categories include preventive care (immunization, antenatal consultation and family planning); childbirth; acute conditions (high fever, severe diarrhoea, or cough); injury; chronic conditions (arthritis, asthma and heart disease); and other (dental care, minor surgery and other). Self-assessed health was constructed using information from Q2000 ("In general, how would you rate your health today as?") in the WHS. Respondents could select one of the

following five categories: "Very good", "Good", "Moderate", "Bad" and "Very bad".

7.3.1 Patient assessment of responsiveness domains for ambulatory services: percent reporting "Moderate", "Bad" or "Very bad" - 1

	Prompt Attention				Dignity				Communication			
	Travel Time		Wait Time		Talked Respectfully		Privacy		Clear Explanation		Time for Questions	
	%	SE	%	SE	%	SE	%	SE	%	SE	%	SE
Sex												
Female	30.1	1.3	27.4	1.2	10.9	0.9	12.1	1.0	15.9	1.0	17.8	1.0
Male	33.4	1.7	27.8	1.6	12.5	1.2	13.4	1.3	15.8	1.3	18.8	1.4
Area of Residence												
Urban	21.3	1.5	24.5	1.5	9.8	1.0	10.4	1.1	11.4	1.1	13.6	1.2
Rural	37.7	1.4	29.5	1.3	12.5	0.9	14.1	1.1	18.6	1.1	21.0	1.2
Age Group												
18-29y	31.1	1.8	29.4	1.7	12.8	1.3	13.6	1.4	18.6	1.5	20.3	1.5
30-44y	35.2	1.9	31.7	1.8	13.2	1.3	15.3	1.5	17.7	1.5	19.6	1.5
45-59y	29.1	2.3	22.9	2.1	9.8	1.5	9.9	1.6	13.1	1.7	14.8	1.8
60-69y	31.3	3.6	21.8	3.2	7.3	2.0	8.5	2.2	9.7	2.3	15.2	2.8
70+y	17.8	3.5	17.6	3.5	5.0	2.0	7.1	2.4	6.7	2.3	12.6	3.0
Education Years												
0	35.3	2.3	28.2	2.2	14.1	1.7	16.8	2.0	19.0	1.9	22.3	2.0
1-5	30.5	1.9	27.1	1.8	9.5	1.2	11.4	1.4	14.4	1.4	15.8	1.5
6-11	27.4	2.2	28.6	2.2	11.8	1.6	11.8	1.7	14.3	1.7	15.1	1.8
12+	19.4	2.7	22.7	2.8	7.7	1.8	9.4	2.0	9.1	1.9	11.3	2.1
Income Quintiles												
Q1	44.6	2.5	35.7	2.4	17.0	1.8	19.8	2.2	27.5	2.2	30.8	2.3
Q2	35.1	2.4	29.2	2.2	13.0	1.7	12.8	1.8	18.8	1.9	20.8	2.0
Q3	33.9	2.4	26.2	2.2	12.2	1.7	13.6	1.8	15.6	1.8	17.4	1.9
Q4	22.3	2.2	24.4	2.3	9.4	1.5	9.6	1.6	10.2	1.6	14.2	1.8
Q5	18.3	2.1	21.3	2.2	5.3	1.2	7.0	1.4	5.0	1.2	6.7	1.4
Condition												
Child-Visit	36.1	2.3	33.0	2.2	16.5	1.7	17.3	1.9	22.7	2.0	22.9	2.0
Preventive	32.3	4.2	39.8	4.3	17.2	3.3	19.1	4.1	25.0	3.8	26.6	3.9
Childbirth	20.0	17.9	7.7	7.4	0.0	0.0	14.3	13.2	15.4	10.0	15.4	10.0
Acute	37.9	2.1	32.6	2.0	17.1	1.6	19.0	1.8	22.4	1.8	24.9	1.8
Injury	32.5	5.2	35.0	5.3	15.0	4.0	12.7	4.0	17.5	4.2	26.2	4.9
Chronic	24.7	4.9	21.8	4.7	7.7	3.0	6.7	2.9	5.1	2.5	7.7	3.0
Other	28.2	1.4	24.5	1.4	8.6	0.9	9.4	1.0	12.2	1.0	14.4	1.1
Ownership												
Government	36.5	1.5	38.0	1.5	18.3	1.2	20.3	1.4	25.7	1.4	28.5	1.4
Private	26.1	1.4	16.9	1.2	4.9	0.7	5.3	0.8	6.2	0.8	8.1	0.9
NGO	26.8	6.9	31.7	7.3	12.2	5.1	13.9	5.8	17.1	5.9	14.6	5.5
Other	33.3	15.7	13.3	8.8	6.7	6.4	9.1	8.7	6.7	6.4	6.7	6.4
Self-Assessed Health												
Very-Good	29.9	2.7	25.8	2.6	11.9	1.9	14.8	2.3	16.3	2.2	16.7	2.2
Good	30.6	1.7	25.3	1.6	9.4	1.1	8.9	1.1	12.8	1.2	14.2	1.3
Moderate	33.2	1.7	29.1	1.6	12.5	1.2	16.0	1.4	18.5	1.4	21.5	1.5
Bad	27.6	3.1	31.0	3.2	13.0	2.3	10.2	2.2	15.7	2.5	20.4	2.7
Very-Bad	53.8	13.8	53.8	13.8	30.8	12.8	15.4	10.0	23.1	11.7	46.2	13.8
TOTAL	31.3	1.0	27.6	1.0	11.5	0.7	12.6	0.8	15.8	0.8	18.1	0.8

The following table reports the percent of people perceiving poor responsiveness in ambulatory care facilities, where "poor" is defined as a rating of "Moderate", "Bad" or "Very bad" in Q7315-Q7327 which have 5 response options (including "Good" and "Very good"). Ratings for each of the seven domains of ambulatory care responsiveness (including 13 questions) by patients have been presented here. There are two questions each for six of the seven domains; the domain choice has only one question. The following questions from the survey have been used to determine patient assessment of each responsiveness domain:

- (1) *Prompt attention*: travel time (Q7315) and wait time (Q7316).
- (2) *Dignity*: talked respectfully (Q7317) and privacy (Q7318).
- (3) *Communication*: clear explanation (Q7319) and time for questions (Q7320).
- (4) *Autonomy*: treatment information (Q7321) and involvement (Q7322).
- (5) *Confidentiality*: talk privately (Q7323) and confidentiality of records (Q7324).
- (6) *Choice of health care provider*: Q7325.
- (7) *Basic amenities*: cleanliness (Q7326) and space (Q7327).

Results are reported for the total WHS sample (category: "TOTAL"), and by the following sample sub-groups: sex, area of residence, age group, years of education, income quintiles, reason for visit, ownership (of health facility), and self-assessed health. Mean values and standard errors (SE) are reported for each category.

Sub-groups common to other tables were constructed in the same manner. Common sub-groups include sex (Q1001), area of residence (Q0104), age group (regrouping of reported age in Q1002), years of education (Q1010) and income quintiles. To determine income and subsequently income quintiles, an asset index was constructed for each household using responses to section 0700 on "Permanent Income Indicators" from the WHS household questionnaire.

Ownership, condition and self-assessed health sub-groups were constructed uniquely for the responsiveness section's tables. There are four categories of ownership: "Operated by the government" (Government), "Privately operated" (Private), "NGO" and "Other". To construct the ownership sub-group, information was combined from (a) Q7204, Q7205 and Q7301 for those utilizing ambulatory services, and (b) Q7200, Q7201 and Q7401 for those utilizing hospital inpatient services. The sub-group "Condition" used and regrouped information from Q7003 ("Which reason best describes why you [your child] last needed health care?") into 6 categories. The six categories include preventive care (immunization, antenatal consultation and family planning); childbirth; acute conditions (high fever, severe diarrhoea, or cough); injury; chronic conditions (arthritis, asthma and heart disease); and other (dental care, minor surgery and other). Self-assessed health was constructed using information from Q2000 ("In general, how would you rate your health today as?") in the WHS. Respondents were asked to select one of the following five categories: "Very good", "Good", "Moderate", "Bad" and "Very bad".

7.3.2 Patient assessment of responsiveness domains for ambulatory services: percent reporting "Moderate", "Bad" or "Very bad" - 2

	Autonomy				Confidentiality				Choice of Healthcare Provider		Basic Amenities			
	Treatment Information		Involvement		Talk Privately		Confidentiality of Records				Cleanliness		Space	
	%	SE	%	SE	%	SE	%	SE	%	SE	%	SE		
Sex														
Female	20.2	1.1	21.1	1.1	15.0	1.0	12.5	0.9	21.3	1.1	11.1	0.9	15.9	1.0
Male	23.3	1.6	21.1	1.5	14.4	1.3	11.9	1.2	21.4	1.5	15.5	1.4	21.3	1.5
Area of Residence														
Urban	16.1	1.3	14.4	1.2	11.1	1.1	10.1	1.1	16.3	1.3	12.2	1.2	17.2	1.4
Rural	24.6	1.2	25.4	1.2	17.1	1.1	13.8	1.0	24.5	1.2	13.0	1.0	18.2	1.1
Age Group														
18-29y	23.7	1.6	23.0	1.6	15.5	1.4	12.5	1.3	22.6	1.6	12.2	1.3	18.6	1.5
30-44y	22.2	1.6	22.0	1.6	17.7	1.5	15.9	1.4	23.4	1.6	15.7	1.4	21.0	1.6
45-59y	19.0	1.9	19.0	1.9	12.2	1.6	9.2	1.4	20.3	2.0	11.2	1.6	15.0	1.8
60-69y	17.1	2.9	17.1	2.9	11.5	2.5	6.8	2.0	15.2	2.8	8.3	2.2	12.7	2.7
70+y	16.0	3.4	17.6	3.5	6.7	2.3	9.2	2.7	14.3	3.2	9.0	2.7	11.5	3.0
Education Years														
0	24.4	2.1	28.7	2.2	20.5	2.0	16.6	1.8	28.4	2.2	16.1	1.9	23.4	2.1
1-5	20.5	1.6	20.2	1.6	12.3	1.3	10.7	1.3	20.7	1.6	11.7	1.3	15.4	1.5
6-11	19.8	2.0	18.9	2.0	13.5	1.7	11.9	1.6	16.5	1.8	13.5	1.7	19.5	2.0
12+	15.5	2.4	11.0	2.1	7.7	1.8	7.7	1.8	13.8	2.3	8.8	1.9	15.2	2.4
Income Quintiles														
Q1	34.5	2.4	34.1	2.3	23.8	2.1	18.8	2.0	34.5	2.4	17.8	1.9	24.9	2.2
Q2	25.2	2.2	24.8	2.1	15.9	1.8	11.7	1.6	24.8	2.1	13.2	1.7	16.8	1.9
Q3	20.3	2.0	22.4	2.1	16.4	1.9	14.2	1.8	20.1	2.0	12.4	1.7	16.4	1.9
Q4	15.8	1.9	15.4	1.9	10.3	1.6	9.4	1.5	15.6	1.9	12.2	1.8	16.9	2.0
Q5	11.1	1.7	7.4	1.4	6.4	1.3	7.0	1.4	10.6	1.7	7.5	1.4	13.7	1.9
Condition														
Child-Visit	24.1	2.0	24.5	2.0	22.8	2.0	18.0	1.8	27.8	2.1	16.0	1.7	22.9	2.0
Preventive	28.9	4.1	32.5	4.2	22.8	3.7	16.9	3.4	36.7	4.3	14.6	3.2	23.6	3.8
Childbirth	25.0	12.5	15.4	10.0	15.4	10.0	15.4	10.0	15.4	10.0	0.0	0.0	0.0	0.0
Acute	27.0	1.9	26.3	1.9	21.8	1.7	18.5	1.7	26.3	1.9	16.6	1.6	22.2	1.8
Injury	33.8	5.3	26.6	5.0	23.8	4.8	13.2	3.9	25.3	4.9	14.1	3.9	20.3	4.5
Chronic	9.0	3.2	9.1	3.3	3.9	2.2	5.1	2.5	11.5	3.6	6.8	2.9	9.5	3.4
Other	17.9	1.2	17.8	1.2	10.5	1.0	9.3	0.9	17.3	1.2	11.1	1.0	15.7	1.2
Ownership														
Government	31.7	1.5	32.0	1.5	23.4	1.3	18.9	1.3	33.1	1.5	19.2	1.3	24.9	1.4
Private	10.9	1.0	10.8	1.0	6.3	0.8	5.9	0.8	9.5	0.9	6.3	0.8	10.3	1.0
NGO	17.1	5.9	17.1	5.9	17.1	5.9	17.1	5.9	22.0	6.5	10.3	4.9	15.8	5.9
Other	21.4	11.0	0.0	0.0	6.7	6.4	14.3	9.4	26.7	11.4	0.0	0.0	20.0	12.6
Self-Assessed Health														
Very-Good	18.2	2.3	15.6	2.1	13.6	2.0	11.5	1.9	17.0	2.2	12.9	2.0	19.4	2.3
Good	18.2	1.4	18.8	1.4	11.5	1.2	9.9	1.1	19.9	1.4	10.0	1.1	15.9	1.4
Moderate	24.8	1.6	25.0	1.6	18.1	1.4	14.9	1.3	25.0	1.6	15.6	1.3	20.0	1.5
Bad	21.9	2.8	21.3	2.8	14.4	2.4	10.8	2.1	18.1	2.6	10.6	2.1	13.4	2.4
Very-Bad	53.8	13.8	46.2	13.8	38.5	13.5	41.7	14.2	38.5	13.5	23.1	11.7	38.5	13.5
TOTAL	21.3	0.9	21.1	0.9	14.8	0.8	12.3	0.7	21.3	0.9	12.7	0.8	17.8	0.9

The following table reports the percent of people perceiving poor responsiveness in ambulatory care facilities, where "poor" is defined as a rating of "Moderate", "Bad" or "Very bad" in Q7315-Q7327 which have 5 response options (including "Good" and "Very good"). Ratings for each of the seven domains of ambulatory care responsiveness (including 13 questions) by patients have been presented here. There are two questions each for six of the seven domains; the domain choice has only one question. The following questions from the survey have been used to determine patient assessment of each responsiveness domain:

- (1) *Prompt attention*: travel time (Q7315) and wait time (Q7316).
- (2) *Dignity*: talked respectfully (Q7317) and privacy (Q7318).
- (3) *Communication*: clear explanation (Q7319) and time for questions (Q7320).
- (4) *Autonomy*: treatment information (Q7321) and involvement (Q7322).
- (5) *Confidentiality*: talk privately (Q7323) and confidentiality of records (Q7324).
- (6) *Choice of health care provider*: Q7325.
- (7) *Basic amenities*: cleanliness (Q7326) and space (Q7327).

Results are reported for the total WHS sample (category: "TOTAL"), and by the following sample sub-groups: sex, area of residence, age group, years of education, income quintiles, reason for visit, ownership (of health facility), and self-assessed health. Mean values and standard errors (SE) are reported for each category.

Sub-groups common to other tables were constructed in the same manner. Common sub-groups include sex (Q1001), area of residence (Q0104), age group (regrouping of reported age in Q1002), years of education (Q1010) and income quintiles. To determine income and subsequently income quintiles, an asset index was constructed for each household using responses to section 0700 on "Permanent Income Indicators" from the WHS household questionnaire.

Ownership, condition and self-assessed health sub-groups were constructed uniquely for the responsiveness section's tables. There are four categories of ownership: "Operated by the government" (Government), "Privately operated" (Private), "NGO" and "Other". To construct the ownership sub-group, information was combined from (a) Q7204, Q7205 and Q7301 for those utilizing ambulatory services, and (b) Q7200, Q7201 and Q7401 for those utilizing hospital inpatient services. The sub-group "Condition" used and regrouped information from Q7003 ("Which reason best describes why you [your child] last needed health care?") into 6 categories. The six categories include preventive care (immunization, antenatal consultation and family planning); childbirth; acute conditions (high fever, severe diarrhoea, or cough); injury; chronic conditions (arthritis, asthma and heart disease); and other (dental care, minor surgery and other). Self-assessed health was constructed using information from Q2000 ("In general, how would you rate your health today as?") in the WHS. Respondents were asked to select one of the following five categories: "Very good", "Good", "Moderate", "Bad" and "Very bad".

7.4 Patient assessed characteristics of hospital inpatient health services

	Patients staying for more than 6 days on last hospital visit		Patients rating characteristics of health care provider as adequate / more than adequate				Mean time taken to reach health facility (in minutes)		Patients using private car or motorcycle to reach facility		Patients waiting more than a month to be admitted		Mean number of patients sleeping in the same room		Mean cost for a hospital visit		Percent of population perceiving discrimination			
	%	SE	%	SE	%	SE	%	SE	Minutes	SE	%	SE	%	SE	No	SE	mean cost	SE	%	SE
Sex																				
Female	15.7	1.4	94.0	0.9	94.7	0.8	94.8	0.9	67.5	4.0	48.9	1.9	1.8	0.5	7.1	0.8	1,890.9	227.5	11.4	1.2
Male	37.9	3.0	93.6	1.5	93.9	1.5	92.7	1.6	71.1	5.7	42.2	3.0	1.9	0.8	6.2	0.9	3,009.3	489.4	12.4	2.0
Area of Residence																				
Urban	18.6	1.7	93.0	1.1	94.5	1.0	93.7	1.1	50.9	3.4	53.2	2.2	1.7	0.6	6.1	0.8	3,301.7	387.7	13.6	1.5
Rural	25.4	2.1	94.8	1.0	94.4	1.1	94.8	1.1	89.7	5.8	39.9	2.3	2.0	0.7	7.8	0.9	1,111.6	161.9	9.5	1.4
Age Group																				
18-29y	13.2	1.8	93.5	1.3	94.6	1.2	95.0	1.2	55.0	4.3	46.6	2.6	0.5	0.4	7.5	0.9	1,441.6	230.0	11.0	1.6
30-44y	21.4	2.2	93.3	1.4	93.3	1.3	93.0	1.4	74.7	5.6	49.0	2.7	1.2	0.6	7.0	0.9	1,801.2	218.2	14.4	1.9
45-59y	27.5	3.8	94.2	2.0	94.2	2.0	94.1	2.0	74.2	7.9	39.9	4.2	4.4	1.8	5.7	0.9	3,194.0	706.5	12.1	2.8
60-69y	43.9	6.1	93.9	2.9	95.5	2.6	92.4	3.3	65.5	9.8	45.5	6.1	4.5	2.6	6.7	1.3	4,514.2	1,595.8	6.5	3.1
70+y	39.3	6.5	98.2	1.8	100.0	0.0	98.2	1.8	108.1	23.2	58.9	6.6	5.5	3.1	4.8	1.1	4,669.0	1,700.0	5.4	3.0
Education Years																				
0	25.0	3.7	97.0	1.5	94.1	2.0	95.3	1.9	89.9	11.4	25.9	3.8	3.7	1.6	7.2	1.1	870.4	156.4	6.3	2.2
1-5	22.2	2.5	96.8	1.0	96.8	1.0	95.8	1.2	74.6	5.7	42.0	2.9	1.4	0.7	7.7	1.0	1,333.6	306.1	10.4	1.8
6-11	17.5	2.3	91.0	1.7	93.6	1.5	93.2	1.6	55.6	4.5	50.4	3.0	0.4	0.4	6.6	0.9	2,493.6	489.6	13.6	2.1
12+	20.0	3.0	93.9	1.8	96.6	1.4	95.3	1.6	49.3	5.8	67.8	3.5	3.3	1.3	5.5	1.0	4,681.8	658.0	12.1	2.5
Income Quintiles																				
Q1	30.3	4.6	96.0	2.0	91.9	2.7	93.7	2.5	93.5	12.3	22.2	4.2	0.0	0.0	8.5	1.5	348.3	105.0	12.4	3.3
Q2	27.7	3.9	95.3	1.9	96.1	1.7	95.2	1.9	79.1	8.3	37.7	4.2	2.3	1.3	7.5	1.2	856.1	361.4	9.4	2.6
Q3	20.1	3.1	92.9	2.0	93.5	1.9	92.5	2.1	74.8	7.6	34.3	3.6	1.2	0.8	6.7	1.0	1,309.7	301.6	12.8	2.6
Q4	20.0	2.5	93.3	1.6	92.9	1.6	95.4	1.4	53.6	4.0	49.4	3.2	0.8	0.6	7.3	0.9	1,274.4	168.2	10.8	2.0
Q5	16.7	2.4	92.7	1.7	96.7	1.1	93.6	1.6	49.5	5.4	68.7	3.0	2.8	1.1	5.5	1.0	5,407.1	725.5	13.6	2.2
Condition																				
Child-Visit	39.7	4.3	91.6	2.4	91.5	2.4	92.4	2.3	91.9	10.6	32.3	4.1	2.3	1.3	7.3	1.3	1,092.5	234.6	9.5	2.6
Fever	40.7	5.2	92.3	2.8	91.2	3.0	92.3	2.8	78.8	9.9	38.5	5.1	0.0	0.0	6.7	1.4	576.7	139.3	11.1	3.3
Childbirth	3.5	1.0	94.8	1.2	96.2	1.0	96.3	1.1	51.4	4.1	53.5	2.6	0.0	0.0	7.8	0.9	1,226.2	179.7	12.4	1.8
Arthritis	0.0	0.0	100.0	0.0	100.0	0.0	100.0	0.0	39.7	11.5	66.7	19.2	0.0	0.0	5.7	1.6	1,234.3	844.1	33.3	19.3
Asthma	50.0	17.7	100.0	0.0	100.0	0.0	100.0	0.0	28.1	6.8	50.0	17.7	0.0	0.0	12.2	3.1	224.5	97.0	12.5	11.7
Heart-Disease	28.6	12.1	92.9	6.9	100.0	0.0	78.6	11.0	94.3	35.3	50.0	13.4	14.3	9.4	3.1	1.2	6,277.6	2,877.8	21.4	11.0
Injury	41.0	5.4	90.4	3.2	90.4	3.2	89.2	3.4	96.5	16.5	42.2	5.4	1.2	1.2	6.7	1.3	2,160.4	859.6	11.0	3.4
Minor-Surgery	21.7	5.0	94.2	2.8	97.1	2.0	95.7	2.5	84.2	10.2	39.1	5.9	10.1	3.6	5.1	1.1	3,160.8	787.4	7.6	3.3
Other	30.9	2.6	93.6	1.4	93.3	1.4	94.1	1.3	75.4	5.9	45.4	2.8	2.5	0.9	6.4	0.9	3,350.6	487.7	11.1	1.8
Ownership																				
Government	24.7	1.6	92.6	1.0	93.1	1.0	93.0	1.0	65.9	3.6	40.5	1.9	2.0	0.5	8.2	0.8	412.1	61.3	12.9	1.3
Private	11.6	2.0	98.1	0.9	98.4	0.8	97.2	1.0	73.0	7.4	63.7	3.0	1.6	0.8	3.3	0.8	5,246.9	521.9	9.1	1.8
NGO	100.0	0.0	50.0	35.4	50.0	35.4	100.0	0.0	330.5	21.7	0.0	0.0	0.0	0.0	12.0	6.5	2,700.5	1,840.6	0.0	0.0
Other	66.7	19.2	66.7	19.3	100.0	0.0	100.0	0.0	116.3	54.2	50.0	20.4	0.0	0.0	7.7	3.2	651.0	256.6	16.7	15.2
Self-Assessed Health																				
Very-Good	24.7	3.6	95.2	1.8	97.9	1.2	97.0	1.5	52.6	5.3	54.8	4.1	0.0	0.0	6.6	1.0	2,325.7	584.7	8.8	2.4
Good	16.6	1.9	95.7	1.1	95.4	1.1	95.7	1.1	63.9	4.9	46.9	2.6	1.9	0.7	7.2	0.9	2,057.8	266.8	12.4	1.7
Moderate	23.4	2.2	93.4	1.3	93.9	1.3	95.1	1.2	74.7	5.4	45.5	2.6	2.5	0.8	6.7	0.9	2,362.0	426.9	12.0	1.7
Bad	31.2	4.8	86.0	3.6	87.1	3.5	81.5	4.0	88.1	15.2	40.9	5.1	2.2	1.5	6.7	1.1	2,252.9	676.5	13.0	3.5
Very-Bad	20.0	17.9	100.0	0.0	100.0	0.0	80.0	17.9	43.0	15.1	60.0	21.9	0.0	0.0	9.3	2.4	1,384.8	814.6	0.0	0.0
TOTAL	21.7	1.3	93.8	0.8	94.5	0.7	94.2	0.8	68.5	3.4	47.1	1.6	1.8	0.4	6.9	0.7	2,217.7	216.5	11.7	1.0

This table looks at various characteristics of a visit to a hospital inpatient care facility, for those who utilized such services in the past 3 years (Q7200, Q7201 and Q7402). Characteristics of a visit reported here include:

(1) The percent of patients who stayed 6 days or more at an inpatient facility during their last visit (Q7404).

(2) Patients' rating of *skills, equipment, and drug supplies* of the provider as "adequate": percent of patients who reported "Yes" to questions Q7405, Q7406 and Q7407, respectively.

(3) Barriers or facilitators to care access have been reported here for those who utilized inpatient care services in the last 3 years. They include:

(a) *Mean time taken to reach facility*: patient reported times from Q7408 were used to calculate averages across sample sub-groups.

(b) *Patients using private motor vehicles*: percent of patients who reported using a "private car or motorcycle" to get to the facility in Q7409.

(c) *Patients waiting more than a month to be admitted*: percent of patients who reported waiting more than a month to be admitted in Q7410.

(d) *Mean number of patients sleeping in same room*: averages across sample sub-groups have been constructed for numbers reported in Q7417.

(c) *Mean cost of visit*: patient reported costs in Q7411-Q7415 were summed up for an individual and then averaged across sample sub-groups.

(d) *Perceived discrimination*: percent of patients who reported "Yes" to any form of discrimination asked in Q7433-Q7439.

Results are reported for the total WHS sample (category: "TOTAL"), and by the following sample sub-groups: sex, area of residence, age group, years of education, income quintiles, reason for seeking care (condition), ownership (of health facility), and self-assessed health. Mean values and standard errors (SE) are reported for each category.

Sub-groups common to other tables were constructed in the same manner. Common sub-groups include sex (Q1001), area of residence (Q0104), age group (regrouping of reported age in Q1002), years of education (Q1010) and income quintiles. To determine income and subsequently income quintiles, an asset index was constructed for each household using responses to section 0700 on "Permanent Income Indicators" from the WHS household questionnaire.

Ownership, condition and self-assessed health sub-groups were constructed uniquely for the responsiveness section's tables. There are four categories of ownership: "Operated by the government" (Government), "Privately operated" (Private), "NGO" and "Other". To construct the ownership sub-group, information was combined from (a) Q7204, Q7205 and Q7301 for those utilizing ambulatory services, and (b) Q7200, Q7201 and Q7401 for those utilizing hospital inpatient services. The sub-group "Condition" used information from Q7403 ("Which of the following best describes the reason for your [child's] last overnight stay?"). The eight categories of Q7403 include high fever, diarrhoea, or cough; childbirth; arthritis; asthma; heart disease; bodily injury; minor surgery; and other. Self-assessed health was constructed using information from Q2000 ("In general, how would you rate your health today as?") in the WHS. Respondents were asked to select one of the following five categories: "Very good", "Good", "Moderate", "Bad" and "Very bad".

7.5.1 Patient assessment of responsiveness domains for hospital inpatient services: percent reporting "Moderate", "Bad" or "Very bad" - 1

	Prompt Attention				Dignity				Communication				Autonomy			
	Travel Time		Wait Time		Talked Respectfully		Privacy		Clear Explanation		Time for Questions		Treatment Information		Involvement	
	%	SE	%	SE	%	SE	%	SE	%	SE	%	SE	%	SE	%	SE
Sex																
Female	26.5	1.6	24.2	1.6	15.8	1.4	14.5	1.3	19.4	1.5	22.3	1.6	25.6	1.6	23.0	1.6
Male	24.9	2.7	21.2	2.5	13.3	2.1	11.8	2.0	14.8	2.2	18.6	2.4	24.0	2.6	20.1	2.5
Area of Residence																
Urban	20.0	1.7	23.9	1.8	17.7	1.6	15.5	1.6	18.4	1.7	21.6	1.8	24.5	1.9	21.7	1.8
Rural	33.4	2.2	22.9	2.0	12.1	1.6	11.7	1.5	17.8	1.8	20.9	1.9	26.0	2.1	22.7	2.0
Age Group																
18-29y	26.1	2.3	27.8	2.3	17.5	2.0	15.9	1.9	22.8	2.2	24.9	2.2	32.6	2.5	26.5	2.3
30-44y	27.3	2.4	22.7	2.3	17.1	2.0	15.7	2.0	18.0	2.1	23.0	2.3	24.8	2.3	24.7	2.3
45-59y	26.1	3.7	16.7	3.2	10.9	2.6	9.4	2.5	12.3	2.8	15.9	3.1	16.7	3.2	14.5	3.0
60-69y	22.7	5.2	22.7	5.2	12.1	4.0	10.6	3.8	13.6	4.2	15.2	4.4	18.2	4.8	15.2	4.4
70+y	21.8	5.6	16.1	4.9	1.8	1.8	1.8	1.8	7.1	3.4	7.1	3.4	8.9	3.8	5.4	3.0
Education Years																
0	30.4	4.0	21.3	3.5	7.4	2.2	10.3	2.6	15.4	3.1	20.6	3.5	23.0	3.6	21.5	3.5
1-5	27.5	2.6	19.2	2.4	13.8	2.0	13.5	2.0	14.8	2.1	18.7	2.3	25.6	2.6	21.6	2.4
6-11	25.8	2.6	26.8	2.6	19.6	2.4	17.5	2.3	21.5	2.5	22.5	2.5	25.7	2.6	23.7	2.6
12+	16.2	2.8	24.0	3.2	16.1	2.7	12.8	2.5	18.9	2.9	20.0	3.0	22.9	3.1	21.1	3.0
Income Quintiles																
Q1	41.4	5.0	32.3	4.7	13.1	3.4	12.1	3.3	23.2	4.2	25.3	4.4	33.7	4.8	30.3	4.6
Q2	29.2	4.0	20.2	3.5	12.3	2.9	11.6	2.8	14.6	3.1	16.3	3.2	22.7	3.7	20.8	3.6
Q3	30.4	3.6	26.0	3.4	19.0	3.0	18.3	3.0	20.1	3.1	27.2	3.4	33.3	3.6	29.8	3.5
Q4	20.9	2.6	21.7	2.6	11.8	2.0	11.1	2.0	15.3	2.3	16.9	2.4	20.0	2.5	16.5	2.3
Q5	17.6	2.4	22.9	2.7	20.3	2.6	17.9	2.4	19.9	2.6	23.4	2.7	23.4	2.7	23.6	2.7
Condition																
Child-Visit	33.6	4.1	29.2	4.0	16.8	3.3	16.0	3.2	19.1	3.4	25.2	3.8	33.6	4.1	26.7	3.9
Fever	39.6	5.1	33.3	5.0	16.5	3.9	16.5	3.9	18.7	4.1	27.5	4.7	35.2	5.0	27.5	4.7
Childbirth	21.7	2.2	23.1	2.2	17.2	2.0	17.0	2.0	21.3	2.1	21.9	2.2	25.8	2.3	24.9	2.3
Arthritis	33.3	19.3	16.7	15.2	0.0	0.0	0.0	0.0	0.0	0.0	0.0	0.0	16.7	15.2	0.0	0.0
Asthma	14.3	13.2	0.0	0.0	0.0	0.0	0.0	0.0	0.0	0.0	0.0	0.0	0.0	0.0	14.3	13.2
Heart-Disease	35.7	12.8	21.4	11.0	7.1	6.9	7.1	6.9	14.3	9.4	14.3	9.4	14.3	9.4	14.3	9.4
Injury	30.5	5.1	31.3	5.1	22.9	4.6	14.5	3.9	21.7	4.5	30.1	5.0	39.8	5.4	30.1	5.0
Minor-Surgery	29.0	5.5	21.7	5.0	10.1	3.6	8.7	3.4	7.2	3.1	10.1	3.6	10.1	3.6	7.2	3.1
Other	25.8	2.4	20.3	2.2	12.8	1.8	11.0	1.7	16.8	2.1	19.6	2.2	22.0	2.3	19.9	2.2
Ownership																
Government	28.8	1.7	28.7	1.7	18.8	1.5	16.7	1.4	22.2	1.6	25.6	1.6	30.0	1.8	26.9	1.7
Private	18.1	2.4	8.9	1.8	3.9	1.2	4.2	1.2	6.2	1.5	8.9	1.8	12.4	2.0	8.9	1.8
NGO	100.0	0.0	50.0	35.4	50.0	35.4	50.0	35.4	50.0	35.4	50.0	35.4	0.0	0.0	50.0	35.4
Other	33.3	19.2	33.3	19.3	50.0	20.4	50.0	20.4	33.3	19.2	33.3	19.3	33.3	19.3	33.3	19.3
Self-Assessed Health																
Very-Good	15.1	3.0	16.4	3.1	15.9	3.0	13.0	2.8	17.1	3.1	18.5	3.2	21.1	3.4	17.9	3.2
Good	24.3	2.2	18.1	2.0	10.9	1.6	9.8	1.6	13.6	1.8	15.3	1.9	19.9	2.1	18.8	2.0
Moderate	31.9	2.4	29.8	2.4	19.0	2.1	17.6	2.0	23.7	2.2	27.9	2.4	30.7	2.4	26.2	2.3
Bad	28.0	4.7	30.1	4.8	17.2	3.9	15.1	3.7	17.2	3.9	23.7	4.4	31.2	4.8	28.0	4.7
Very-Bad	20.0	17.9	40.0	21.9	0.0	0.0	20.0	17.9	0.0	0.0	25.0	21.7	20.0	17.9	0.0	0.0
TOTAL	26.1	1.4	23.4	1.4	15.1	1.2	13.7	1.1	18.1	1.2	21.3	1.3	25.2	1.4	22.2	1.3

The following table reports the percent of people perceiving poor responsiveness in hospital inpatient care facilities, where "poor" is defined as a rating of "Moderate", "Bad" or "Very bad" in questions Q7418-Q7432 which have 5 response options (including "good" and "very good".. Ratings for each of the eight domains of hospital inpatient care responsiveness (including 15 questions) by patients have been presented here. There are two questions each for seven of the eight domains; the domain of choice has only one question. The following questions from the survey have been used to determine patient assessment of each responsiveness domain:

- (1) *Prompt attention*: travel time (Q7418) and wait time (Q7419).
- (2) *Dignity*: talked respectfully (Q7420) and privacy (Q7421).
- (3) *Communication*: clear explanation (Q7422) and time for questions (Q7423).
- (4) *Autonomy*: treatment information (Q7424) and involvement (Q7425).
- (5) *Confidentiality*: talk privately (Q7426) and confidentiality of records (Q7427).
- (6) *Choice of health care provider*: Q7428.
- (7) *Basic amenities*: cleanliness (Q7429) and space (Q7430).
- (8) *Social support*: family visit (Q7431) and external contact (Q7432).

Results are reported for the total WHS sample (category: "TOTAL"), and by the following sample sub-groups: sex, area of residence, age group, years of education, income quintiles, reason for visit, ownership (of health facility), and self-assessed health. Mean values and standard errors (SE) are reported for each category.

Sub-groups common to other tables were constructed in the same manner. Common sub-groups include sex (Q1001), area of residence (Q0104), age group (regrouping of reported age in Q1002), years of education (Q1010) and income quintiles. To determine income and subsequently income quintiles, an asset index was constructed for each household using responses to section 0700 on "Permanent Income Indicators" from the WHS household questionnaire.

Ownership, condition and self-assessed health sub-groups were constructed uniquely for the responsiveness section's tables. There are four categories of ownership: "Operated by the government" (Government), "Privately operated" (Private), "NGO" and "Other". To construct the ownership sub-group, information was combined from (a) Q7204, Q7205 and Q7301 for those utilizing ambulatory services, and (b) Q7200, Q7201 and Q7401 for those utilizing hospital inpatient services. The sub-group "Condition" used information from Q7403 ("Which of the following best describes the reason for your [child's] last overnight stay?"). The eight categories of Q7403 include high fever, diarrhoea, or cough; childbirth; arthritis; asthma; heart disease; bodily injury; minor surgery; and other. Self-assessed health was constructed using information from Q2000 ("In general, how would you rate your health today as?") in the WHS. Respondents were asked to select one of the following five categories: "Very good", "Good", "Moderate", "Bad" and "Very bad".

7.5.2 Patient assessment of responsiveness domains for hospital inpatient services: percent reporting "Moderate", "Bad" or "Very bad" - 2

	Confidentiality				Choice of health care provider		Basic Amenities				Social Support			
	Talk Privately	Confidentiality of records					Cleanliness	Space			Family Visit	External Contact		
	%	SE	%	SE	%	SE	%	SE	%	SE	%	SE	%	SE
Sex														
Female	20.2	1.5	14.4	1.3	27.3	1.7	13.1	1.3	19.6	1.5	17.2	1.4	17.7	1.4
Male	14.4	2.2	10.3	1.9	21.8	2.6	10.6	1.9	15.0	2.2	12.3	2.0	11.5	2.0
Area of Residence														
Urban	18.8	1.7	13.8	1.5	24.9	1.9	12.8	1.4	18.0	1.7	16.2	1.6	17.4	1.6
Rural	18.5	1.8	12.6	1.6	27.0	2.1	12.0	1.6	18.8	1.9	15.4	1.7	14.5	1.7
Age Group														
18-29y	23.9	2.2	16.8	2.0	33.1	2.5	14.0	1.8	24.7	2.2	20.2	2.1	20.5	2.1
30-44y	20.3	2.2	14.7	1.9	27.5	2.4	12.8	1.8	16.5	2.0	15.1	1.9	15.1	1.9
45-59y	10.1	2.6	6.6	2.1	14.0	3.0	11.7	2.8	13.2	2.9	13.9	3.0	14.6	3.0
60-69y	7.6	3.3	7.8	3.4	15.4	4.5	7.7	3.3	14.1	4.4	6.3	3.0	6.3	3.0
70+y	7.1	3.4	3.6	2.5	9.1	3.9	7.1	3.4	5.5	3.1	7.3	3.5	7.3	3.5
Education Years														
0	14.1	3.0	12.2	2.9	23.0	3.6	7.4	2.3	11.8	2.8	9.6	2.5	9.6	2.5
1-5	17.3	2.2	13.2	2.0	27.0	2.6	10.6	1.8	15.7	2.2	15.4	2.2	14.3	2.1
6-11	23.2	2.5	16.7	2.2	27.7	2.7	16.1	2.2	20.2	2.4	17.2	2.3	19.0	2.4
12+	17.8	2.8	9.5	2.2	23.4	3.2	13.3	2.5	23.0	3.2	16.8	2.8	17.9	2.9
Income Quintiles														
Q1	19.2	4.0	12.8	3.4	29.3	4.6	10.1	3.0	19.2	4.0	15.2	3.6	16.2	3.7
Q2	16.2	3.2	12.3	2.9	26.9	3.9	10.8	2.7	15.4	3.2	13.2	3.0	12.4	2.9
Q3	23.1	3.2	16.6	2.9	29.0	3.5	14.2	2.7	21.0	3.2	20.1	3.1	19.5	3.0
Q4	17.6	2.4	13.9	2.2	25.0	2.7	11.5	2.0	17.8	2.4	16.7	2.4	15.5	2.3
Q5	20.7	2.6	13.2	2.2	23.0	2.7	15.9	2.3	19.8	2.6	15.6	2.3	18.4	2.5
Condition														
Child-Visit	20.6	3.6	14.7	3.1	36.2	4.2	10.7	2.7	23.8	3.8	22.1	3.6	19.1	3.4
Fever	25.3	4.6	18.7	4.1	36.3	5.0	15.4	3.8	22.2	4.4	22.0	4.3	20.9	4.3
Childbirth	22.3	2.2	15.5	1.9	29.1	2.4	12.0	1.7	18.0	2.0	17.7	2.0	18.8	2.0
Arthritis	0.0	0.0	0.0	0.0	16.7	15.2	0.0	0.0	0.0	0.0	16.7	15.2	16.7	15.2
Asthma	25.0	15.3	14.3	13.2	57.1	18.7	25.0	15.3	42.9	18.7	28.6	17.1	42.9	18.7
Heart-Disease	14.3	9.4	14.3	9.4	7.1	6.9	7.1	6.9	7.7	7.4	7.7	7.4	15.4	10.0
Injury	21.7	4.5	14.5	3.9	39.8	5.4	12.0	3.6	19.3	4.3	18.1	4.2	13.3	3.7
Minor-Surgery	7.2	3.1	5.9	2.8	5.9	2.8	10.1	3.6	13.2	4.1	8.7	3.4	10.1	3.6
Other	14.7	2.0	10.6	1.7	20.5	2.2	12.3	1.8	18.5	2.2	12.7	1.8	13.0	1.9
Ownership														
Government	23.5	1.6	17.2	1.4	31.9	1.8	15.2	1.4	21.9	1.6	19.9	1.5	20.2	1.5
Private	4.2	1.2	1.9	0.9	8.5	1.7	3.9	1.2	7.8	1.7	3.9	1.2	3.9	1.2
NGO	50.0	35.4	50.0	35.4	50.0	35.4	0.0	0.0	50.0	35.4	50.0	35.4	50.0	35.4
Other	50.0	20.4	16.7	15.2	66.7	19.3	16.7	15.2	33.3	19.3	33.3	19.3	33.3	19.3
Self-Assessed Health														
Very-Good	13.0	2.8	9.8	2.5	18.3	3.2	6.2	2.0	12.5	2.8	9.8	2.5	10.5	2.6
Good	16.9	2.0	10.2	1.6	21.6	2.2	9.8	1.6	15.0	1.9	12.8	1.7	12.5	1.7
Moderate	22.5	2.2	17.5	2.0	32.5	2.5	16.8	2.0	23.0	2.2	21.0	2.1	21.8	2.2
Bad	20.4	4.2	15.6	3.8	29.3	4.8	16.3	3.8	23.9	4.4	18.5	4.0	17.4	4.0
Very-Bad	0.0	0.0	0.0	0.0	0.0	0.0	0.0	0.0	0.0	0.0	0.0	0.0	0.0	0.0
TOTAL	18.6	1.2	13.3	1.1	25.9	1.4	12.4	1.1	18.4	1.2	15.8	1.2	16.0	1.2

The following table reports the percent of people perceiving poor responsiveness in hospital inpatient care facilities, where "poor" is defined as a rating of "Moderate", "Bad" or "Very bad" in questions Q7418-Q7432 which have 5 response options (including "good" and "very good".. Ratings for each of the eight domains of hospital inpatient care responsiveness (including 15 questions) by patients have been presented here. There are two questions each for seven of the eight domains; the domain of choice has only one question. The following questions from the survey have been used to determine patient assessment of each responsiveness domain:

- (1) *Prompt attention*: travel time (Q7418) and wait time (Q7419).
- (2) *Dignity*: talked respectfully (Q7420) and privacy (Q7421).
- (3) *Communication*: clear explanation (Q7422) and time for questions (Q7423).
- (4) *Autonomy*: treatment information (Q7424) and involvement (Q7425).
- (5) *Confidentiality*: talk privately (Q7426) and confidentiality of records (Q7427).
- (6) *Choice of health care provider*: Q7428.
- (7) *Basic amenities*: cleanliness (Q7429) and space (Q7430).
- (8) *Social support*: family visit (Q7431) and external contact (Q7432).

Results are reported for the total WHS sample (category: "TOTAL"), and by the following sample sub-groups: sex, area of residence, age group, years of education, income quintiles, reason for visit, ownership (of health facility), and self-assessed health. Mean values and standard errors (SE) are reported for each category.

Sub-groups common to other tables were constructed in the same manner. Common sub-groups include sex (Q1001), area of residence (Q0104), age group (regrouping of reported age in Q1002), years of education (Q1010) and income quintiles. To determine income and subsequently income quintiles, an asset index was constructed for each household using responses to section 0700 on "Permanent Income Indicators" from the WHS household questionnaire.

Ownership, condition and self-assessed health sub-groups were constructed uniquely for the responsiveness section's tables. There are four categories of ownership: "Operated by the government" (Government), "Privately operated" (Private), "NGO" and "Other". To construct the ownership sub-group, information was combined from (a) Q7204, Q7205 and Q7301 for those utilizing ambulatory services, and (b) Q7200, Q7201 and Q7401 for those utilizing hospital inpatient services. The sub-group "Condition" used information from Q7403 ("Which of the following best describes the reason for your [child's] last overnight stay?"). The eight categories of Q7403 include high fever, diarrhoea, or cough; childbirth; arthritis; asthma; heart disease; bodily injury; minor surgery; and other. Self-assessed health was constructed using information from Q2000 ("In general, how would you rate your health today as?") in the WHS. Respondents were asked to select one of the following five categories: "Very good", "Good", "Moderate", "Bad" and "Very bad".

7.6 Importance of different domains of responsiveness: percent reporting "Extremely Important"

	Prompt Attention		Dignity		Communication		Autonomy		Confidentiality		Choice		Basic Amenities		Social Support	
	%	SE	%	SE	%	SE	%	SE	%	SE	%	SE	%	SE	%	SE
Sex																
Female	17.4	0.7	20.0	0.7	16.5	0.7	15.4	0.7	18.2	0.7	16.5	0.7	17.5	0.7	15.6	0.7
Male	19.5	0.9	22.5	1.0	18.5	0.9	15.5	0.8	18.1	0.9	17.1	0.9	19.0	0.9	17.0	0.9
Area of Residence																
Urban	24.1	1.0	27.1	1.0	24.3	1.0	22.3	0.9	26.4	1.0	22.5	0.9	25.7	1.0	22.7	0.9
Rural	14.0	0.7	16.4	0.7	12.2	0.6	10.4	0.6	12.2	0.6	12.6	0.6	12.6	0.6	11.4	0.6
Age Group																
18-29y	18.8	1.0	20.8	1.0	16.9	1.0	15.5	0.9	18.6	1.0	16.8	0.9	18.8	1.0	16.3	0.9
30-44y	19.1	1.0	22.5	1.1	18.8	1.0	17.1	1.0	18.8	1.0	17.8	1.0	19.1	1.0	17.3	1.0
45-59y	18.1	1.2	21.2	1.3	17.7	1.2	14.8	1.2	18.2	1.2	16.6	1.2	17.9	1.2	16.0	1.2
60-69y	14.1	1.7	17.1	1.9	14.2	1.7	12.6	1.6	14.9	1.8	14.4	1.7	14.4	1.7	12.7	1.7
70+y	17.2	2.1	18.8	2.2	15.0	2.0	12.9	1.9	17.5	2.2	15.2	2.0	15.2	2.0	14.6	2.0
Education Years																
0	14.3	1.2	14.4	1.2	12.8	1.1	12.6	1.1	14.5	1.2	13.1	1.1	13.8	1.1	12.7	1.1
1-5	16.9	1.0	18.9	1.1	14.1	1.0	12.7	0.9	15.1	1.0	14.9	1.0	15.0	1.0	13.7	0.9
6-11	21.1	1.3	23.4	1.3	21.2	1.3	18.9	1.2	22.2	1.3	19.1	1.2	21.7	1.3	19.2	1.2
12+	31.5	1.9	35.5	2.0	32.0	2.0	30.2	1.9	34.3	2.0	30.8	1.9	34.0	2.0	30.0	1.9
Income Quintiles																
Q1	13.1	1.1	15.6	1.2	11.0	1.1	9.4	1.0	10.2	1.0	11.5	1.1	11.3	1.1	10.1	1.0
Q2	12.2	1.1	14.4	1.2	9.2	1.0	7.5	0.9	9.8	1.0	9.7	1.0	10.4	1.0	9.0	1.0
Q3	13.9	1.2	15.4	1.2	12.3	1.1	11.3	1.1	13.5	1.2	12.7	1.1	12.7	1.1	12.0	1.1
Q4	21.9	1.4	24.6	1.4	21.0	1.4	18.9	1.3	24.3	1.4	20.1	1.4	23.0	1.4	19.7	1.3
Q5	30.0	1.6	34.2	1.6	32.0	1.6	29.7	1.6	33.1	1.6	29.3	1.5	32.9	1.6	29.4	1.5
Ownership																
Government	18.3	0.9	20.2	1.0	16.6	0.9	15.2	0.9	17.9	0.9	16.4	0.9	17.5	0.9	15.2	0.9
Private	18.5	1.1	22.0	1.2	17.9	1.1	15.4	1.0	18.9	1.1	17.6	1.1	19.4	1.1	17.4	1.1
NGO	23.3	6.4	27.9	6.8	20.9	6.2	20.9	6.2	20.9	6.2	20.9	6.2	20.9	6.2	23.3	6.4
Other	14.3	7.6	19.0	8.6	15.0	8.0	14.3	7.6	19.0	8.6	9.5	6.4	14.3	7.6	9.5	6.4
Self-Assessed Health																
Very-Good	22.9	1.6	26.6	1.6	22.9	1.6	21.1	1.5	21.8	1.5	22.1	1.5	23.3	1.6	21.9	1.5
Good	17.7	0.9	20.6	1.0	16.3	0.9	15.0	0.8	18.0	0.9	16.1	0.9	18.2	0.9	15.3	0.8
Moderate	17.9	0.9	20.4	1.0	17.2	0.9	14.8	0.8	17.7	0.9	16.3	0.9	17.2	0.9	15.8	0.9
Bad	13.4	1.6	15.1	1.6	12.0	1.5	10.0	1.4	14.0	1.6	11.7	1.5	11.7	1.5	10.4	1.4
Very-Bad	33.3	9.6	29.2	9.3	29.2	9.3	29.2	9.3	29.2	9.3	33.3	9.6	33.3	9.6	29.2	9.3
Type of Care																
Ambulatory-Adult	20.3	0.9	24.1	1.0	19.6	0.9	17.2	0.9	20.7	0.9	18.9	0.9	20.4	0.9	18.2	0.9
Ambulatory-Child	15.1	1.2	16.4	1.2	13.2	1.1	12.9	1.1	14.4	1.2	13.2	1.1	14.6	1.2	12.4	1.1
Inpatient-Adult	13.0	3.2	17.6	3.7	14.2	3.4	12.0	3.1	15.7	3.5	13.0	3.2	15.7	3.5	12.1	3.2
Inpatient-Child	15.2	6.2	18.2	6.7	18.2	6.7	15.2	6.2	18.2	6.7	15.2	6.2	18.2	6.7	18.2	6.7
Non-Users	17.2	1.0	19.5	1.0	16.5	1.0	14.3	0.9	16.3	0.9	16.0	0.9	16.9	1.0	15.2	0.9
TOTAL	18.2	0.6	21.0	0.6	17.3	0.6	15.4	0.5	18.2	0.6	16.8	0.5	18.1	0.6	16.1	0.5

This table shows the percent of people who rated a responsiveness domain as "Extremely Important". All survey respondents were queried on their perception of the importance of each of the eight responsiveness domains in section 7100 of the WHS where each domain was described in detail (Q7100-Q7107).

Respondents were asked to say whether the domain was "Extremely Important", "Very Important", "Moderately Important", "Slightly Important" or "Not

Important".

Results are reported for the total WHS sample (category: "TOTAL"), and by the following sample sub-groups: sex, area of residence, age group, years of education, income quintiles, ownership (of health facility), self-assessed health, and type of care. Mean values and standard errors (SE) are reported for each category.

Sub-groups common to other tables were constructed in the same manner. Common sub-groups include sex (Q1001), area of residence (Q0104), age group (regrouping of reported age in Q1002), years of education (Q1010) and income quintiles. To determine income and subsequently income quintiles, an asset index was constructed for each household using responses to section 0700 on "Permanent Income Indicators" from the WHS household questionnaire.

Ownership, self-assessed health and type of care sub-groups were constructed uniquely for the responsiveness section's tables. There are four categories of ownership: "Operated by the government" (Government), "Privately operated" (Private), "NGO" and "Other". To construct the ownership sub-group, information was combined from (a) Q7204, Q7205 and Q7301 for those utilizing ambulatory services, and (b) Q7200, Q7201 and Q7401 for those utilizing hospital inpatient services. Self-assessed health was constructed using information from Q2000 ("In general, how would you rate your health today as?") in the WHS. Respondents were asked to select one of the following five categories: "Very good", "Good", "Moderate", "Bad" and "Very bad". Type of care is a constructed sample sub-group combining information from Q7000, Q7001 and Q7016. There are five categories of type of care: "Ambulatory adult", "Ambulatory child", "Inpatient adult", "Inpatient child" and "Non users".

8.0 Expenditure Background Indicators (2002)

GDP per capita (\$)	1,933
Total health expenditure per capita (\$)	93
Total population (000)	12,036
Life expectancy at birth (Both sexes)	65.9
Life expectancy at birth (male)	63.1
Life expectancy at birth (female)	69.0
Healthy life expectancy at birth (Both sexes)	57.4
Healthy life expectancy at birth (Male)	54.9
Healthy life expectancy at birth (Female)	59.9
Government funded health expenditure as a percentage of total health expenditure	47.5
Social security funded health expenditure as a percentage of total health expenditure	26.8
Private health insurance premiums as a percentage of total health expenditure	2.7
Out-of-pocket payment as a percentage of total health expenditure	45.3

8.1 Distribution of health payments across different population groups

	Mean Household expenditure (EXP) in local currency	% Poor	% Impoverished	% Catastrophic	OOP % EXP	OOP % non-subsistence spending	Mean OOP in local currency
Catastrophic							
No	1,539	45.6	1.1		3.3	6.4	83
Yes	1,866	46.1	21.1		38.7	71.3	937
Poor							
No	2,461		9.8	20.8	12.9	20.7	446
Yes	595		0.0	21.1	8.1	19.1	43
Insurance							
No	1,323	53.3	5.4	21.2	9.8	19.9	189
Yes	2,450	23.3	5.1	20.4	13.4	20.3	478
Income_Quintile							
1st(poorest)	378	100.0	0.0	21.6	8.7	19.9	26
2nd	711	100.0	0.0	20.8	7.2	18.3	49
3rd	1,109	28.7	17.9	22.0	9.2	20.3	100
4th	1,719	0.0	5.2	18.9	10.9	19.2	185
5th(richest)	4,121	0.0	3.4	21.6	17.6	22.2	949
total	1,608	45.7	5.3	21.0	10.7	20.0	262

OOP: Out of pocket

Household consumption expenditure (EXP) comprises both monetary and in-kind payment on all goods and services and the money value of the consumption of home-made products.

Poor - a household is considered poor when its total household expenditure is smaller than its subsistence spending

Impoverishment - a non-poor household is impoverished by health payment when it becomes poor after paying for health services.

Catastrophic health expenditure occurs when a household's total out-of-pocket health payments equals or exceeds 40% of the households capacity to pay or non-subsistence spending.

Out of pocket health payments (OOP) refer to payments made by households at the point they receive health services. It includes doctor's consultation fees, purchases of medication and hospital bills. Spending on alternative and/or traditional medicine is included. Expenditure on health related transportation and special nutrition is excluded. Insurance reimbursements are also excluded.

Subsistence spending - household subsistence spending is the minimum requirement to maintain a basic life in a society. A poverty line is used in the analysis as subsistence spending.

Food expenditure is the amount spent on all foodstuffs by the household plus the value of the family's own food production consumed within the household. It excludes expenditure on alcoholic beverages, tobacco and food consumption outside the home (e.g hotel and restaurants).

Household capacity to pay - is defined as a household's non-subsistence spending.

Note: table is unweighted

8.2 Percent distribution of structure of out-of-pocket health payments

	Inpatient	Outpatient	Traditional	Drugs	Other	Total
Catastrophic						
No	3.9	8.5	0.5	77.0	10.2	100
Yes	16.4	6.8	1.9	54.3	20.6	100
Poor						
No	14.3	7.5	1.6	57.5	19.1	100
Yes	0.9	4.2	0.2	90.1	4.6	100
Insurance						
No	11.2	8.4	2.6	67.1	10.8	100
Yes	15.7	5.9	0.3	51.6	26.5	100
Income_Quintile						
1st(poorest)	1.4	3.8	0.5	88.1	6.2	100
2nd	0.1	4.2	0.2	92.9	2.6	100
3rd	1.9	8.8	0.7	82.4	6.1	100
4th	2.5	7.9	0.4	79.9	9.4	100
5th(richest)	17.6	7.2	2.0	51.2	22.1	100
total	13.3	7.2	1.5	59.9	18.0	100

Note: table is unweighted

8.3 Financial sources used by households for paying for health services

	Savings	Sold Items	Borrow from relatives &	Borrow from others	Health insurance	Current Income	Other
OOP%non_subsistence_spending							
less than 10%	2.5	8.1	7.9	3.9	0.3	85.7	1.1
10-20%	8.1	10.9	9.6	9.1	1.0	90.6	3.3
20-40%	6.9	9.8	14.1	10.3	0.2	91.5	1.8
above 40%	5.8	9.7	11.3	8.0	0.0	82.1	1.6
Hospitalization							
No	3.2	8.8	8.3	5.1	0.2	86.2	1.4
Yes	10.8	8.9	17.4	11.1	1.0	84.8	2.1
Insurance							
No	3.1	10.4	9.2	5.9	0.1	85.4	1.4
Yes	7.2	4.3	10.2	5.8	0.8	87.8	1.7
Income_Quintile							
1st(poorest)	1.7	8.8	5.9	3.6	0.0	78.4	0.5
2nd	1.6	13.2	8.0	5.6	0.0	85.7	1.5
3rd	3.4	9.8	8.6	7.7	0.0	89.2	1.5
4th	5.1	7.3	10.6	7.0	0.5	88.8	1.6
5th(richest)	9.1	5.1	14.3	5.6	1.0	88.1	2.4
total	4.2	8.8	9.5	5.9	0.3	86.0	1.5

Note: table is unweighted

8.4 Insurance Coverage

	Insured	SE	Mandatory Insurance	SE	Voluntary Insurance	SE	Insured as dependent	SE	Mandatory and Voluntary	SE
Q1(poorest)	4.3	0.4	4.8	0.5	0.0	0.0	4.6	0.9	0.0	0.0
Q2	7.3	0.6	8.0	0.6	0.9	0.5	9.7	1.3	2.1	1.2
Q3	14.7	0.8	16.1	0.8	0.3	0.3	16.5	1.6	0.0	0.0
Q4	26.0	1.0	28.0	1.0	9.5	1.6	29.8	2.0	14.1	2.9
Q5(richest)	47.8	1.1	43.0	1.2	89.3	1.7	39.5	2.2	83.8	3.1
All	2,339	46	1,951	42	416	20	594	24	145	12

Note: table is unweighted

10.1 Inability to control the important things in life - q8000

	Never	SE	Almost never	SE	Sometimes	SE	Fairly often	SE	Very often	SE	Missing	SE	N
Gender													
Male	51.6	0.0	14.3	0.0	27.6	0.0	4.2	0.0	0.9	0.0	1.5	0.0	1,831
Female	44.7	0.0	14.7	0.0	32.3	0.0	5.6	0.0	0.7	0.0	2.0	0.0	2,939
M	0.0	0.0	0.0	0.0	0.0	0.0	0.0	0.0	0.0	0.0	0.0	0.0	
Residence													
Urban	43.5	0.0	15.4	0.0	33.7	0.0	4.3	0.0	1.0	0.0	2.1	0.0	2,013
Rural	50.1	0.0	13.9	0.0	28.1	0.0	5.6	0.0	0.6	0.0	1.6	0.0	2,757
M	0.0	0.0	0.0	0.0	0.0	0.0	0.0	0.0	0.0	0.0	0.0	0.0	
Income													
Q1(poorest)	47.7	0.0	15.8	0.0	27.5	0.0	6.8	0.0	0.6	0.0	1.7	0.0	885
Q2	47.0	0.0	15.7	0.0	30.3	0.0	5.6	0.0	0.5	0.0	1.0	0.0	881
Q3	52.4	0.0	12.0	0.0	27.5	0.0	4.9	0.0	1.0	0.0	2.3	0.0	886
Q4	46.3	0.0	12.7	0.0	34.5	0.0	4.3	0.0	0.9	0.0	1.4	0.0	885
Q5(richest)	44.3	0.0	16.3	0.0	31.7	0.0	3.9	0.0	0.9	0.0	2.9	0.0	883
M	44.9	0.0	15.4	0.0	32.9	0.0	4.9	0.0	0.9	0.0	1.1	0.0	350
Age													
18-29	52.8	0.0	12.3	0.0	28.3	0.0	4.6	0.0	0.6	0.0	1.3	0.0	1,581
30-44	46.5	0.0	13.7	0.0	32.3	0.0	4.8	0.0	1.1	0.0	1.7	0.0	1,498
45-59	43.3	0.0	17.6	0.0	31.0	0.0	5.2	0.0	0.8	0.0	2.1	0.0	959
60-69	44.8	0.0	13.6	0.0	34.2	0.0	4.7	0.0	0.5	0.0	2.2	0.0	404
70-79	40.7	0.0	22.0	0.0	26.8	0.0	6.5	0.0	0.4	0.0	3.7	0.0	246
80+	31.3	0.0	20.3	0.0	28.1	0.0	17.2	0.0	0.0	0.0	3.1	0.0	64
M	61.1	0.0	16.7	0.0	22.2	0.0	0.0	0.0	0.0	0.0	0.0	0.0	18
All	2,258.0	0.0	694.0	0.0	1,454.0	0.0	241.0	0.0	37.0	0.0	86.0	0.0	4,770

10.2 Inability to cope - q8001

	Never	SE	Almost never	SE	Sometimes	SE	Fairly often	SE	Very often	SE	Missing	SE	N
Gender													
Male	50.8	0.0	13.6	0.0	28.7	0.0	4.4	0.0	0.9	0.0	1.6	0.0	1,831
Female	44.2	0.0	14.5	0.0	33.5	0.0	5.0	0.0	0.7	0.0	2.0	0.0	2,939
M	0.0	0.0	0.0	0.0	0.0	0.0	0.0	0.0	0.0	0.0	0.0	0.0	
Residence													
Urban	42.8	0.0	14.4	0.0	35.6	0.0	4.0	0.0	0.9	0.0	2.2	0.0	2,013
Rural	49.6	0.0	14.0	0.0	28.8	0.0	5.3	0.0	0.8	0.0	1.5	0.0	2,757
M	0.0	0.0	0.0	0.0	0.0	0.0	0.0	0.0	0.0	0.0	0.0	0.0	
Income													
Q1(poorest)	46.6	0.0	16.3	0.0	28.1	0.0	6.8	0.0	0.6	0.0	1.7	0.0	885
Q2	47.2	0.0	14.6	0.0	31.2	0.0	5.2	0.0	0.5	0.0	1.2	0.0	881
Q3	51.0	0.0	12.2	0.0	28.8	0.0	4.7	0.0	1.1	0.0	2.1	0.0	886
Q4	45.0	0.0	13.3	0.0	35.5	0.0	4.1	0.0	0.9	0.0	1.2	0.0	885
Q5(richest)	45.5	0.0	14.0	0.0	33.0	0.0	3.6	0.0	0.8	0.0	3.1	0.0	883
M	42.9	0.0	15.1	0.0	36.0	0.0	3.4	0.0	1.4	0.0	1.1	0.0	350
Age													
18-29	51.5	0.0	12.3	0.0	30.2	0.0	4.0	0.0	0.6	0.0	1.3	0.0	1,581
30-44	46.1	0.0	13.9	0.0	32.5	0.0	4.6	0.0	1.1	0.0	1.8	0.0	1,498
45-59	43.6	0.0	15.7	0.0	32.7	0.0	5.2	0.0	0.6	0.0	2.1	0.0	959
60-69	45.3	0.0	13.9	0.0	32.4	0.0	5.9	0.0	0.5	0.0	2.0	0.0	404
70-79	38.6	0.0	20.3	0.0	31.3	0.0	4.5	0.0	1.6	0.0	3.7	0.0	246
80+	28.1	0.0	21.9	0.0	26.6	0.0	17.2	0.0	3.1	0.0	3.1	0.0	64
M	55.6	0.0	11.1	0.0	33.3	0.0	0.0	0.0	0.0	0.0	0.0	0.0	18
All	2,230.0	0.0	676.0	0.0	1,510.0	0.0	228.0	0.0	39.0	0.0	87.0	0.0	4,770

10.3 Satisfaction with your health - q8002

	Very dissatisfied	SE	Dissatisfied	SE	Neither satisfied nor dissatisfied	SE	Satisfied	SE	Very Satisfied	SE	Missing	SE	N
Gender													
Male	1.8	0.0	5.2	0.0	22.7	0.0	43.0	0.0	25.7	0.0	1.6	0.0	1,831
Female	2.4	0.0	6.3	0.0	27.0	0.0	41.5	0.0	20.7	0.0	2.0	0.0	2,939
M	0.0	0.0	0.0	0.0	0.0	0.0	0.0	0.0	0.0	0.0	0.0	0.0	
Residence													
Urban	3.0	0.0	5.5	0.0	25.2	0.0	41.8	0.0	22.2	0.0	2.3	0.0	2,013
Rural	1.6	0.0	6.2	0.0	25.4	0.0	42.3	0.0	22.9	0.0	1.6	0.0	2,757
M	0.0	0.0	0.0	0.0	0.0	0.0	0.0	0.0	0.0	0.0	0.0	0.0	
Income													
Q1(poorest)	2.0	0.0	6.1	0.0	27.6	0.0	40.8	0.0	21.8	0.0	1.7	0.0	885
Q2	1.4	0.0	6.5	0.0	26.2	0.0	43.0	0.0	21.7	0.0	1.2	0.0	881
Q3	1.7	0.0	6.0	0.0	26.9	0.0	42.0	0.0	21.2	0.0	2.3	0.0	886
Q4	2.0	0.0	6.1	0.0	24.4	0.0	42.9	0.0	23.1	0.0	1.5	0.0	885
Q5(richest)	3.2	0.0	5.0	0.0	21.1	0.0	42.5	0.0	25.4	0.0	2.9	0.0	883
M	4.0	0.0	5.4	0.0	26.9	0.0	40.0	0.0	22.3	0.0	1.4	0.0	350
Age													
18-29	1.6	0.0	3.7	0.0	20.6	0.0	44.3	0.0	28.5	0.0	1.4	0.0	1,581
30-44	1.7	0.0	6.1	0.0	25.0	0.0	43.2	0.0	22.3	0.0	1.7	0.0	1,498
45-59	2.5	0.0	6.0	0.0	28.8	0.0	40.9	0.0	19.4	0.0	2.4	0.0	959
60-69	3.2	0.0	8.2	0.0	32.4	0.0	35.6	0.0	18.3	0.0	2.2	0.0	404
70-79	4.5	0.0	12.6	0.0	30.9	0.0	37.4	0.0	11.0	0.0	3.7	0.0	246
80+	10.9	0.0	14.1	0.0	34.4	0.0	28.1	0.0	10.9	0.0	1.6	0.0	64
M	0.0	0.0	5.6	0.0	22.2	0.0	72.2	0.0	0.0	0.0	0.0	0.0	18
All	105.0	0.0	281.0	0.0	1,209.0	0.0	2,007.0	0.0	1,078.0	0.0	90.0	0.0	4,770

10.4 Feeling safe when alone at home - q8011

	Completely safe	SE	Very safe	SE	Moderately safe	SE	Slightly safe	SE	Not safe at all	SE	Missing	SE	N
Gender													
Male	17.1	0.0	25.9	0.0	14.0	0.0	19.1	0.0	22.9	0.0	1.0	0.0	1,831
Female	13.6	0.0	22.9	0.0	15.2	0.0	21.0	0.0	26.6	0.0	0.7	0.0	2,939
M	0.0	0.0	0.0	0.0	0.0	0.0	0.0	0.0	0.0	0.0	0.0	0.0	
Residence													
Urban	9.3	0.0	17.9	0.0	13.7	0.0	22.7	0.0	35.8	0.0	0.6	0.0	2,013
Rural	19.1	0.0	28.5	0.0	15.5	0.0	18.5	0.0	17.4	0.0	1.0	0.0	2,757
M	0.0	0.0	0.0	0.0	0.0	0.0	0.0	0.0	0.0	0.0	0.0	0.0	
Income													
Q1(poorest)	23.5	0.0	30.8	0.0	13.1	0.0	15.5	0.0	16.4	0.0	0.7	0.0	885
Q2	18.4	0.0	27.6	0.0	15.6	0.0	18.4	0.0	18.8	0.0	1.2	0.0	881
Q3	17.9	0.0	25.5	0.0	16.6	0.0	20.3	0.0	18.4	0.0	1.2	0.0	886
Q4	10.6	0.0	20.1	0.0	15.3	0.0	24.1	0.0	29.9	0.0	0.0	0.0	885
Q5(richest)	4.8	0.0	15.6	0.0	13.4	0.0	21.3	0.0	44.3	0.0	0.7	0.0	883
M	14.0	0.0	25.1	0.0	14.3	0.0	24.9	0.0	20.0	0.0	1.7	0.0	350
Age													
18-29	15.6	0.0	24.7	0.0	13.9	0.0	21.7	0.0	23.5	0.0	0.6	0.0	1,581
30-44	13.9	0.0	25.0	0.0	15.6	0.0	19.8	0.0	24.7	0.0	1.1	0.0	1,498
45-59	16.6	0.0	22.3	0.0	13.2	0.0	20.9	0.0	26.4	0.0	0.6	0.0	959
60-69	15.6	0.0	18.6	0.0	17.8	0.0	18.1	0.0	29.0	0.0	1.0	0.0	404
70-79	11.8	0.0	26.8	0.0	15.4	0.0	16.7	0.0	28.5	0.0	0.8	0.0	246
80+	7.8	0.0	32.8	0.0	21.9	0.0	18.8	0.0	15.6	0.0	3.1	0.0	64
M	16.7	0.0	27.8	0.0	0.0	0.0	11.1	0.0	44.4	0.0	0.0	0.0	18
All	714.0	0.0	1,146.0	0.0	703.0	0.0	967.0	0.0	1,200.0	0.0	40.0	0.0	4,770

10.5 Feeling safe when walking down the street alone after dark - q8012

	Completely safe	SE	Very safe	SE	Moderately safe	SE	Slightly safe	SE	Not safe at all	SE	Missing	SE	N
Gender													
Male	9.6	0.0	17.8	0.0	10.4	0.0	18.6	0.0	42.7	0.0	1.0	0.0	1,831
Female	7.0	0.0	13.0	0.0	8.9	0.0	18.2	0.0	51.8	0.0	1.1	0.0	2,939
M	0.0	0.0	0.0	0.0	0.0	0.0	0.0	0.0	0.0	0.0	0.0	0.0	
Residence													
Urban	5.8	0.0	7.8	0.0	6.1	0.0	15.0	0.0	64.6	0.0	0.6	0.0	2,013
Rural	9.5	0.0	20.0	0.0	11.9	0.0	20.9	0.0	36.3	0.0	1.3	0.0	2,757
M	0.0	0.0	0.0	0.0	0.0	0.0	0.0	0.0	0.0	0.0	0.0	0.0	
Income													
Q1(poorest)	13.0	0.0	24.4	0.0	9.8	0.0	20.6	0.0	31.1	0.0	1.1	0.0	885
Q2	8.5	0.0	18.5	0.0	10.9	0.0	20.9	0.0	40.0	0.0	1.2	0.0	881
Q3	10.3	0.0	15.8	0.0	12.1	0.0	18.7	0.0	42.1	0.0	1.0	0.0	886
Q4	5.5	0.0	10.8	0.0	9.4	0.0	18.5	0.0	54.9	0.0	0.8	0.0	885
Q5(richest)	2.5	0.0	4.4	0.0	4.4	0.0	11.8	0.0	76.2	0.0	0.7	0.0	883
M	8.0	0.0	15.7	0.0	11.4	0.0	22.0	0.0	40.9	0.0	2.0	0.0	350
Age													
18-29	8.2	0.0	15.7	0.0	7.8	0.0	17.7	0.0	49.8	0.0	0.6	0.0	1,581
30-44	7.0	0.0	14.8	0.0	10.9	0.0	19.9	0.0	45.9	0.0	1.5	0.0	1,498
45-59	8.8	0.0	14.4	0.0	9.4	0.0	17.2	0.0	49.4	0.0	0.8	0.0	959
60-69	9.4	0.0	11.9	0.0	9.7	0.0	21.0	0.0	46.8	0.0	1.2	0.0	404
70-79	8.1	0.0	14.2	0.0	10.6	0.0	15.4	0.0	50.8	0.0	0.8	0.0	246
80+	3.1	0.0	20.3	0.0	14.1	0.0	12.5	0.0	45.3	0.0	4.7	0.0	64
M	5.6	0.0	22.2	0.0	5.6	0.0	16.7	0.0	50.0	0.0	0.0	0.0	18
All	380.0	0.0	709.0	0.0	452.0	0.0	877.0	0.0	2,302.0	0.0	50.0	0.0	4,770