

# **REPORT OF SOUTH AFRICA**

## TABLE OF CONTENTS

1	Introduction
2	Methodology
2.1	Sampling
2.2.1	Geographic Component of the Survey
2.2.2	The map
2.3	Survey Metrics
2.3.1	Sample deviation index
2.3.2	HH Sample deviation index
2.3.3	Response rate
2.3.4	Missing data
2.3.5	Reliability
3	Socio-Demographic Profile
3.1	Household composition by residence and age groups according to income quintile
3.2	Selected age distributions by income quintile
3.3	Characteristics of head of household by income quintile
3.4	Household population: percent distribution of the de jure population by age, residence, marital status and education according to sex
3.5	Background characteristics of respondents: percent distribution of men and women by age, residence, marital status and education
4	Risk Factors
4.1	Prevalence of smoking and average daily tobacco consumption
4.2	Prevalence of life time abstainers, non-heavy drinkers, infrequent heavy drinkers and frequent heavy drinkers
4.3	Prevalence of insufficient intake of fruit and vegetables and insufficient physical activity
4.4	Access to improved drinking-water: percent distribution of households by

- type of access to drinking water
- 4.5 Access to improved sanitation: percent distribution of households by type of sanitation facility
- 4.6 Solid Fuel use for cooking: percent distribution of households by type of cooking fuel used
- 5 Coverage
- 5.01 Tuberculosis
- 5.02 HIV Prevention and Screening
- 5.03 Antenatal Care and Mother to Child Transmission of HIV
- 5.04 Birth Delivery Care
- 5.05 Child's Health - Common Illness
- 5.06 Child's Health - Danger Signs
- 5.07 Vaccinations Meeting WHO Timeline Recommendations for Children 12 to 23 months of Age with Vaccination Card
- 5.08 Vaccination Status of Children 12-23 Months
- 5.09 Women's Cancer Screening
- 5.10 Oral Health and Injuries
- 5.11 Self Reported Non-Communicable Conditions
- 5.12 Mental Health Conditions
- 5.13 Cataracts
- 6 Health State Descriptions
- 6.01 In general, rate your health today - q2000
- 6.02 Difficulty with 'work and household activities' in last 30 days - q2001
- 6.03 Difficulty with 'moving around' in last 30 days - q2010
- 6.04 Difficulty with 'vigorous activities' in last 30 days - q2011
- 6.05 Difficulty with 'self-care' in last 30 days - q2020
- 6.06 Difficulty with 'taking care of and maintaining general appearance' in last 30 days - q2021
- 6.07 Amount of 'bodily aches or pains' in last 30 days - q2030

- 6.08 Amount of 'bodily discomfort' in last 30 days - q2031
- 6.09 Difficulty with 'concentrating or remembering things' in last 30 days - q2050
- 6.10 Difficulty with 'learning a new task' in last 30 days - q2051
- 6.11 Difficulty with 'personal relationships or participation in the community' in last 30 days - q2060
- 6.12 Difficulty with 'dealing with conflicts and tensions' in last 30 days - q2061
- 6.13 Difficulty with 'seeing and recognizing a person you know across the road (20m)' in last 30 days - q2071
- 6.14 Difficulty with 'seeing an object at arm's length or in reading' in last 30 days - q2072
- 6.15 Problem with 'sleeping' in last 30 days - q2080
- 6.16 Problem with 'feeling rested and refreshed' in last 30 days - q2081
- 6.17 Problem with 'feeling sad, low, or depressed' in last 30 days - q2090
- 6.18 Problem with 'worry or anxiety' in last 30 days - q2091
- 6.19 Adjusted for vignette responses
- 7 Health System Responsiveness
  - 7.1 Self-reported utilization of health services and perceived unmet need
  - 7.2 Patient assessed characteristics of ambulatory health services
    - 7.3.1 Patient assessment of responsiveness domains for ambulatory services: percent reporting "Moderate", "Bad" or "Very bad" - 1
    - 7.3.2 Patient assessment of responsiveness domains for ambulatory services: percent reporting "Moderate", "Bad" or "Very bad" - 2
  - 7.4 Patient assessed characteristics of hospital inpatient health services
    - 7.5.1 Patient assessment of responsiveness domains for hospital inpatient services: percent reporting "Moderate", "Bad" or "Very bad" - 1
    - 7.5.2 Patient assessment of responsiveness domains for hospital inpatient services: percent reporting "Moderate", "Bad" or "Very bad" - 2
  - 7.6 Importance of different domains of responsiveness: percent reporting "Extremely Important"
- 8 Health Expenditure, Insurance and Human Resources for Health

- 8.0 Expenditure Background Indicators (2002)
- 8.1 Distribution of health payments across different population groups
- 8.2 Percent distribution of structure of out-of-pocket health payments
- 8.3 Financial sources used by households for paying for health services
- 8.4 Insurance Coverage
- 8.5 Human resources for health
- 9.1 Adult Mortality Chart 1
- 9.2 Adult Mortality Chart 2
- 9.3 Adult Mortality Chart 3
- 9.4 Adult Mortality Chart 4
- 10 Stress and Social Capital
- 10.1 Inability to control the important things in life - q8000
- 10.2 Inability to cope - q8001
- 10.3 Satisfaction with your health - q8002
- 10.4 Feeling safe when alone at home - q8011
- 10.5 Feeling safe when walking down the street alone after dark - q8012

# 1. Introduction

The World Health Organization initiated the World Health Survey (WHS) as a *data collection platform* to obtain information on the health of populations and on health systems. The WHS responds to the need of countries for a detailed and sustainable health information system and gathers data through surveys to measure essential population health parameters. The WHS uses standard survey procedures and instruments for general population surveys to gather comparable data across WHO Member States. These methods and instruments have been refined through scientific review of literature, extensive consultations with international experts and large-scale pilot tests. WHS is designed to evolve through its implementation by continuous input from collaborators, including policy makers, survey institutions, scientists and other interested parties. The data is jointly owned by the countries and the WHO, and there is a commitment for a long-term data collection, building local capacity and using this information for health policy.

The objectives of the World Health Survey were to:

- develop a **means** of providing:
  - **valid, relevant, reliable** and **comparable** information on **outcomes, functions** and **inputs** to health systems
  - to **supplement** the information provided by routine **HIS**
- build the **evidence base** necessary for policy-makers:
  - to **routinely monitor** if health systems are achieving the **desired goals**
  - and in some countries, to assess if the **increase in health resources** is having the desired effect

The introductory chapter of each country report will provide details on the current sources of data from routine health information systems and ad hoc surveys. It will describe the health situation in the country and identify gaps. It will also present a brief overview on the health system organization within the country.

## 2. Sampling

The WHO sampling guidelines emphasized scientific principles of survey sampling as explicit standards for quality, included examples of good sampling plans, and identified quality assurance standards for countries to adhere to. WHO and technical advisers provided technical support to countries when needed. The following principles were used for sampling in the WHS:

1. The sample should target the *de facto* population (i.e. all people living in that country including guest workers, immigrants and refugees) and not *de jure* population (i.e. the citizens of that country alone) with complete geographic coverage of the country, if possible, or a representative geographic segment of the country.
2. A *sample frame* with 90% coverage that included all key subgroups of interest. Enumeration or listing of households to update the frame was recommended.
3. The WHS sample identified all adult members of the general population aged 18 years or older as its sample. Households are selected using a random, stratified sampling procedure. One individual per household is then selected through a random selection procedure using the Kish table method.
4. The WHS used a sampling strategy which encompasses a known non-zero selection probability for any individual included in the study. This makes it possible to extrapolate the data to the whole population. Households and individuals are selected with a known probability in order to provide selection probabilities for each household and individual in the data set.
5. The WHS sampling strategy was without replacement and categories of non-respondents were clearly defined.
6. The WHS used GPS devices in certain countries and digitized maps to geocode the data within specified guidelines.

Each national report will present a detailed description of the sampling strategy and the allocation tables

---

## 2.2.1 Geographic Component of the Survey

---

Geographic Information refers to any information associated with a location on the Earth's surface. This location can be associated to a coordinate (latitude/longitude), a place's name, a postal address or any other geographic object.

Household Surveys represent an important source of information. If the geographic location of the surveyed clusters is collected at the same time that the interview is conducted users are then able to integrate the spatial dimension in their analysis

The geographic component of the WHO WHS is stored in two sections of the questionnaire:

- 0100 Sampling Information allowing the link between the location of each cluster and the sampling frame used for the survey. This section has also been used in order to collect the type of setting in which each household was located at the time of the survey. This section of the questionnaire has been used for all the countries part of the WHO WHS
- 0200 Geocoding Information for the collection of the latitude and longitude of each household. This section has only been used in 27 countries where GPS devices were available or have been provided. The choice of these countries has been done on the basis of the availability of digital maps delimiting the surveyed clusters, the field data collection planning and their distribution within the different WHO regions. Specific training and field material have been prepared and used by the interviewers or field supervisors in these countries in order to collect the latitude and longitude of each of the surveyed household.

As the sampling design may not always include the administrative structure of the country and as the codes entered in the data set for the sampling level needed to be labelled, a key correspondence table containing this information has been collected after the survey itself.

Once all the survey data and the key correspondence table available a specific protocol has been applied to the two sections mentioned earlier in order to clean eventual data collection or data entry mistakes as well as to fill the gaps in close collaboration with the survey institution.

The questionnaire as well as the training material and data cleaning protocols used can be downloaded from the WHO WHS web site (<http://www.who.int/healthinfo/survey/en/index.html>) in the "Survey Instrument and Related Documents" section.

South Africa is part of the 27 countries where Global Positioning System (GPS) devices have been used during the survey in order to collect the location of each surveyed household.

In order to take advantage of the level of precision given by the use of these devices, but also take into account country respective data confidentiality policies regarding the distribution of such data to third parties, several additional geographical variables have been calculated:

- the weighted centre of gravity of each cluster part of the survey.
- different parameters and indexes giving an indication of the dispersion of the households interviewed in the cluster around its centre of gravity. These parameters and indexes can be used to explain possible heterogeneity in the answers obtained for a same cluster to questions presenting a geography dimension (accessibility for example).

The final geographic subset for South Africa contains:

- the cleaned information stored in the section 0100 and 0200
- the labels attached to the codes used in the data set for identifying each level of the sampling when available
- the 1st and 2nd administrative level names and codes coming from the Second Administrative Level Boundaries data set project (SALB, [http://www3.who.int/whosis/gis/salb/salb\\_home.htm](http://www3.who.int/whosis/gis/salb/salb_home.htm)) allowing the link with the administrative structure of the country (if not part of the sampling frame).
- the geographic variables described above

The use of the GPS devices offers a large range of application which goes from the production of thematic maps, through the performing of spatial analysis to modelling using the spatial dimension of some of the surveyed data.



The generation of the maps and/or application of the methods that are now briefly described may require specific Geographic Information System (GIS) software and technical expertise. In addition to that, in order to create thematic maps, extract figures from other layers or perform spatial analysis it is first necessary to make sure that all the digital layers used are homogeneous in terms of: projection, representativity and sometimes scale of representation. The first one insures the proper overlay of the different layers in the GIS; the second is necessary in order to make a correct analysis of the results; the last one becomes important when we try to attribute cluster to other geographical entities like administrative units for example. In any case this underlines the importance of giving preference to digital layers being well documented (meta information available).

The capacity that exist within a GIS to create thematic maps by overlaying different layers or by linking each feature to a specific data set is largely used nowadays. One example of such map is the sampling distribution map reported at the beginning of this report which has been generated overlaying the location of each surveyed cluster on top of the extension of the a population distribution grid with the indication of the delimitation of the administrative units.

As it can be seen it is not necessary to go down to the location of each household for generating a thematic map which already provides a lot of useful information. Depending on the variables it is in fact possible to generate thematic maps at any higher level part of the sampling frame or administrative structure of the country.

The other potential application is the possibility to extract new parameters from spatially distributed variables stored in other digital layers. The parameters generally used are either linked to:

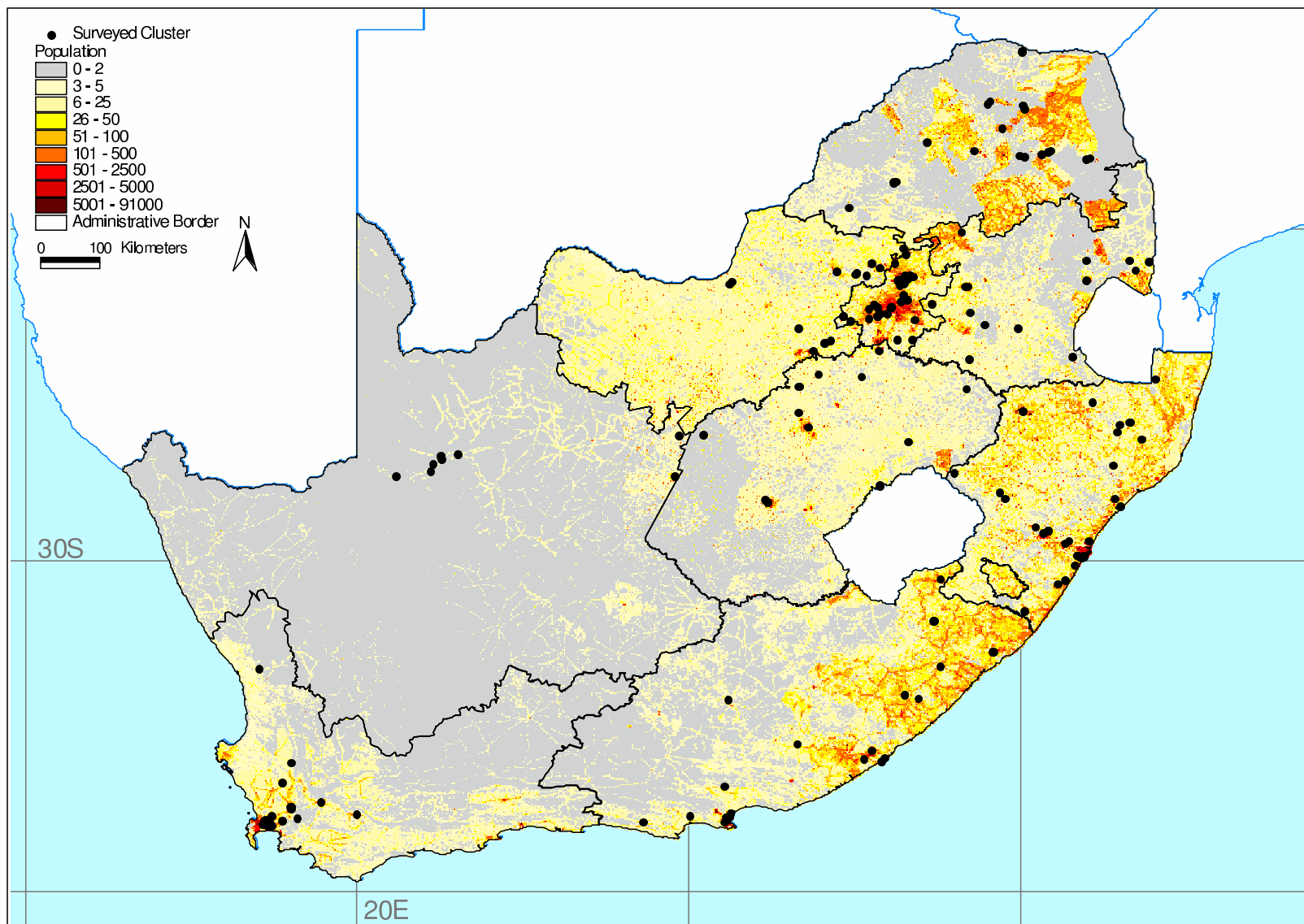
- the location of the cluster itself (e.g altitude)
- the geographic relation (distance or travelling time) which exist between the location of the cluster and the location of other geographic objects (roads, health facility, populated place, water point,.).

These parameters are then used to aggregate the clusters according to new units of analysis integrating therefore the geographic dimension as one of the parameters.

The final example of application that can be mentioned regards the possibility to link the data collected in the context of the WHO WHS to other data collected at the same level (cluster) or any above aggregated level (districts for example) in order to look for possible relationships that would allow the creation of models. If applicable these models may generate figures for units (administrative, statistical) that would not have been integrated in the original sampling frame.

This section only represent a short introduction to the possibilities that the geographic dimension of the surveyed information can offer. A more detailed description of the methods used in order to generate maps, perform specific analysis or apply models are presented in a publication that can be downloaded from the WHO WHS web site ( Ebener et al., forthcoming).

# SOUTH AFRICA WHS 2003 Sampling Distribution



## Data Source:

- Cluster Location: collected with GPS devices during WHS 2003
- Administrative Boundaries: SALB Data set 2000
- Population distribution: extracted from the Landsan database 2001

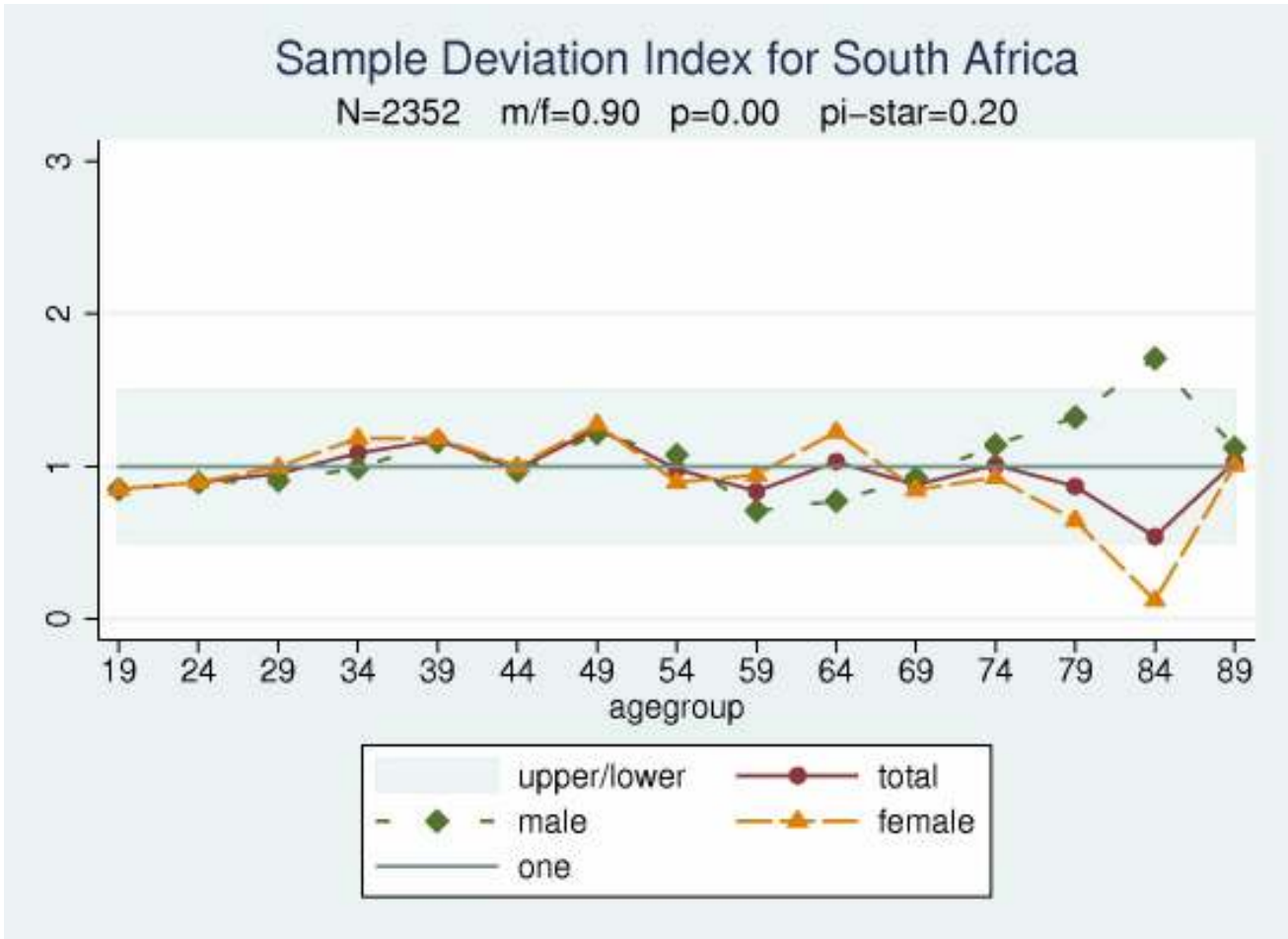
Map Projection: un-projected (Geographic)  
Reference System: WGS 84 datum

Map created 03 February 2005

The boundaries and names shown and the designations used on this map do not imply the expression of any opinion whatsoever on the part of the World Health Organization concerning the legal status of any country, territory, city or area or of its authorities, or concerning the delimitation of its frontiers or boundaries. Dotted lines on maps represent approximate border lines for which there may not yet be full agreement.  
© WHO 2005. All rights reserved

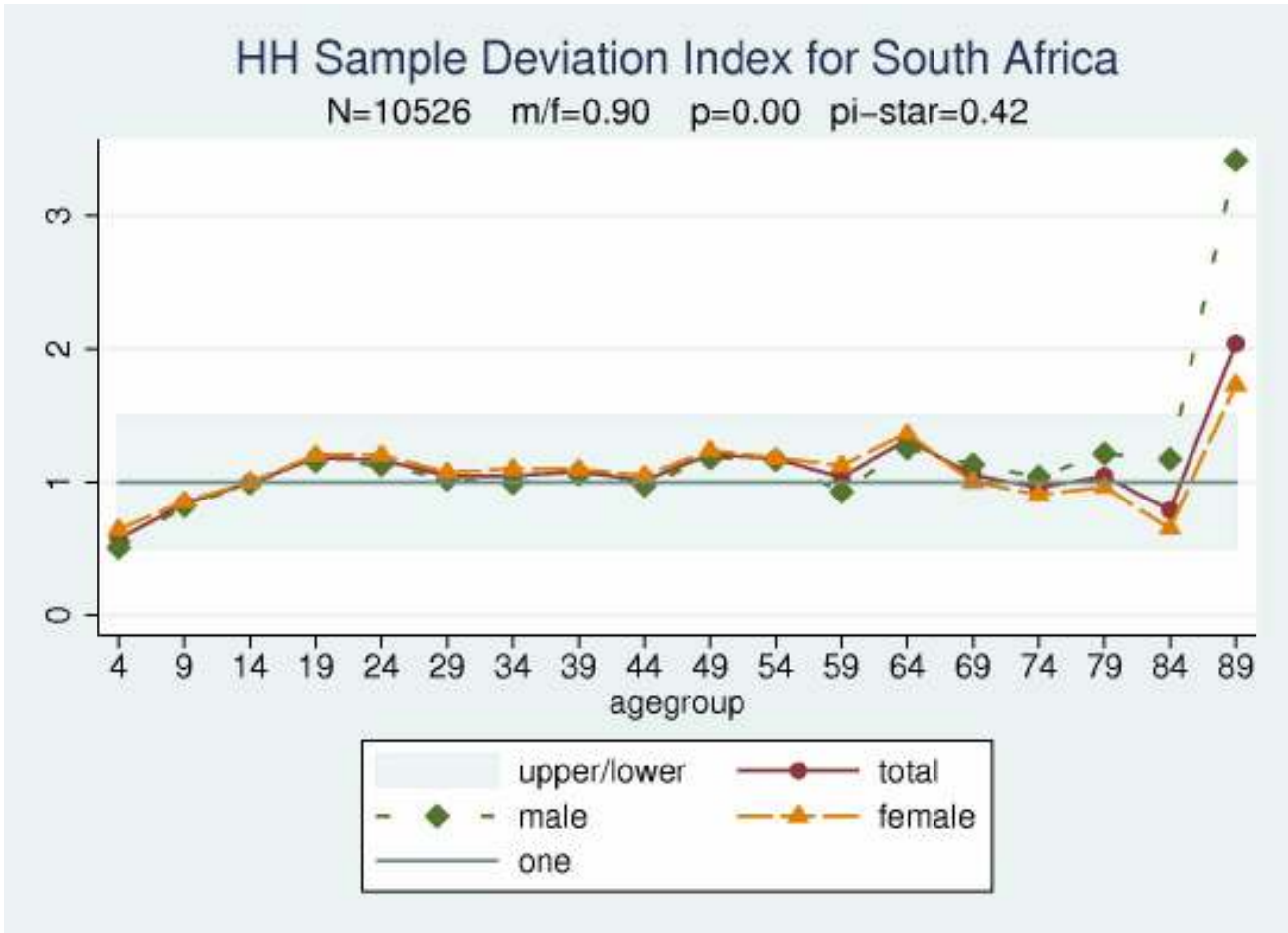


2.3.1 Sample deviation index



SDI

2.3.2 HH Sample deviation index



HDI

---

### 2.3.3 Response rate

---

---

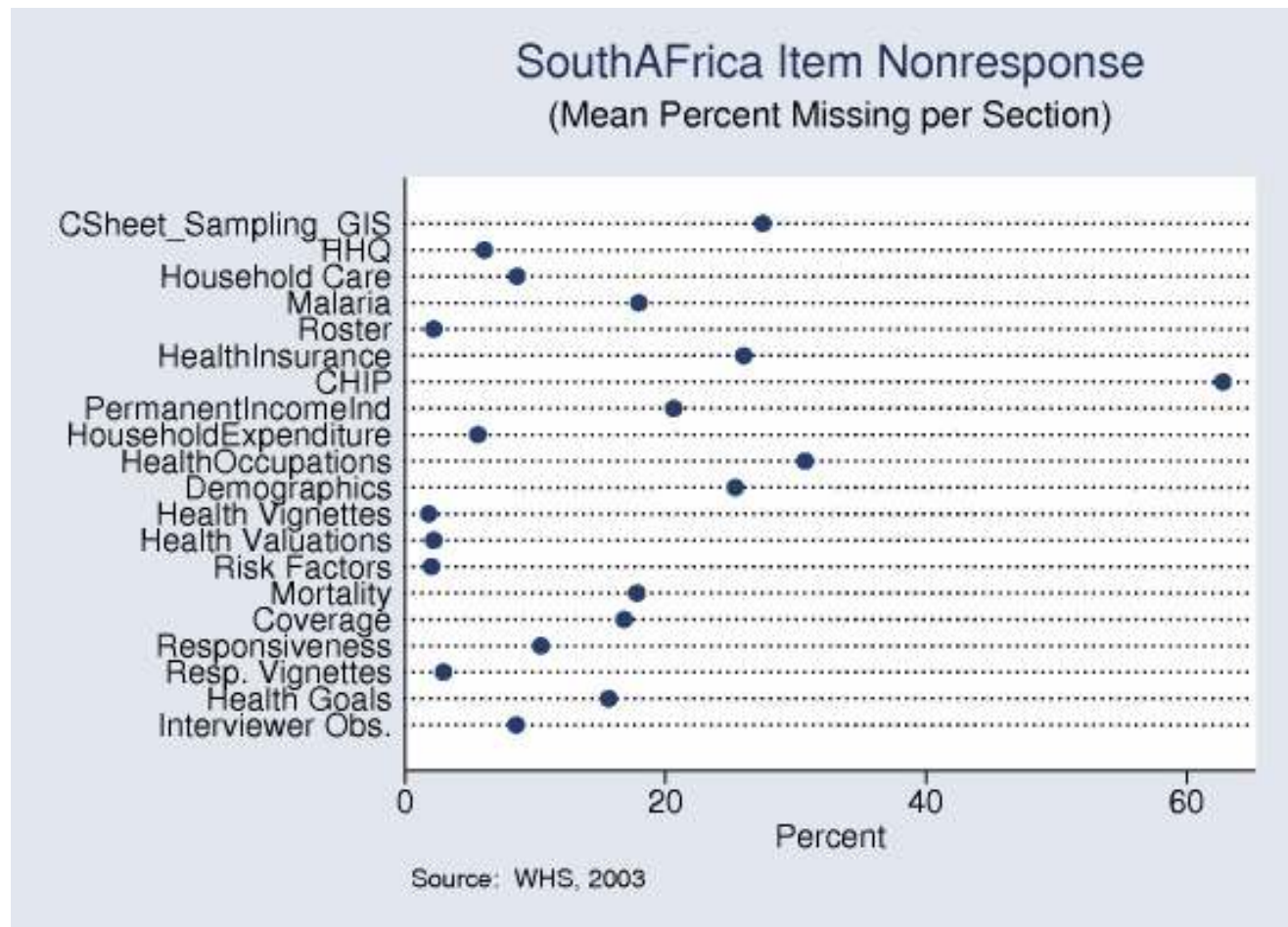
#### Household

Selected	3,157
Interviewed	2,528
Percentages	80

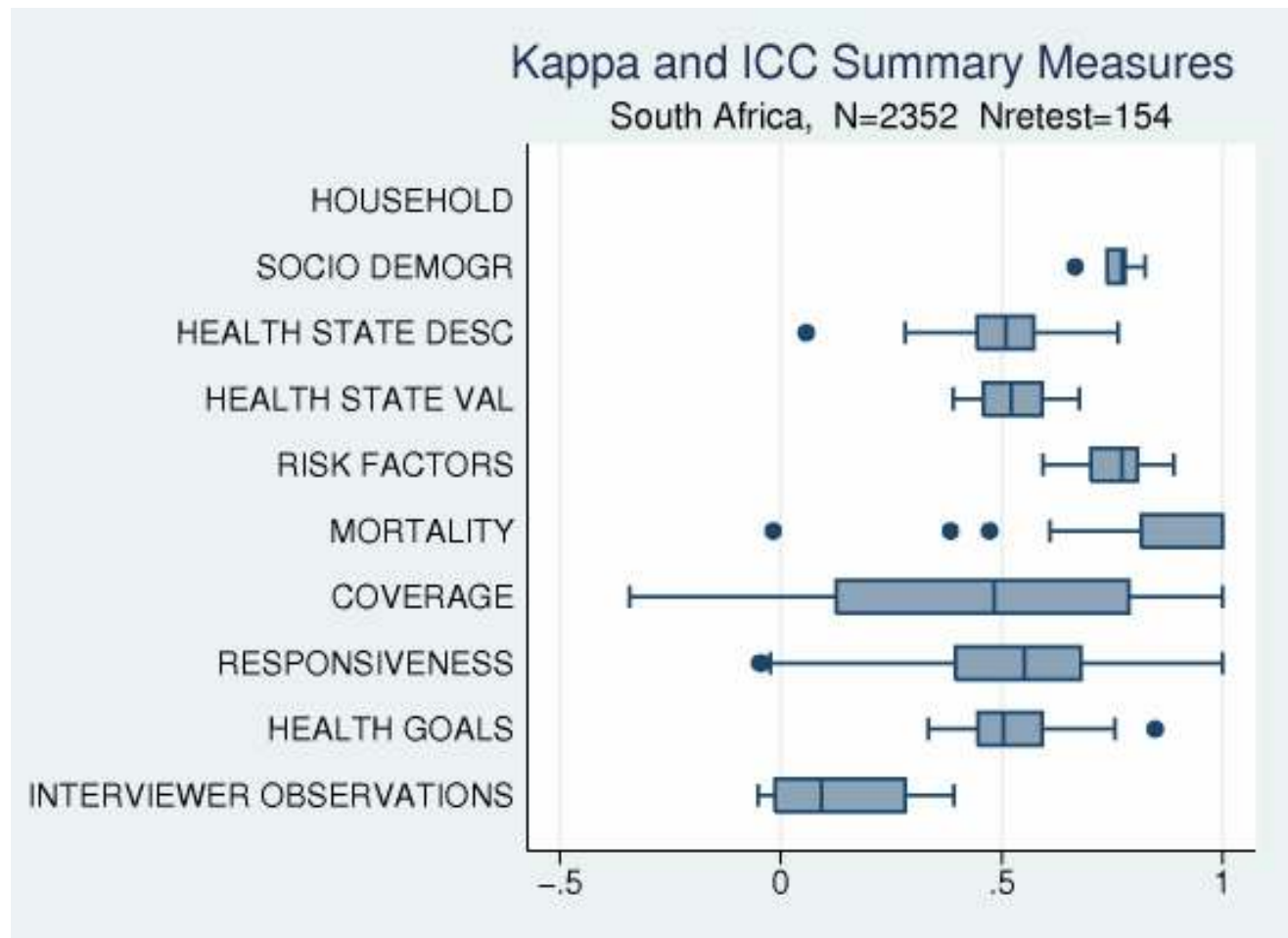
#### Individual

Selected	2,576
Interviewed	2,319
Percentages	90

### 2.3.4 Missing data



### 2.3.5 Reliability



### 3.1 Household composition by residence and age groups according to income quintile

	Percent Rural	SE	Mean Number of									
			Household members	SE	Children < 2 years	SE	Children < 5years	SE	Children 5 -17 years	SE	Persons 18+ years	SE
Q1(poorest)	81.2	4.24	3.2	0.19	0.1	0.02	0.3	0.03	1.1	0.12	1.8	0.08
Q2	43.0	4.81	2.9	0.20	0.1	0.01	0.2	0.03	0.9	0.10	1.8	0.09
Q3	30.6	4.49	3.0	0.22	0.1	0.01	0.2	0.03	0.8	0.11	2.0	0.11
Q4	18.3	3.07	3.5	0.16	0.1	0.01	0.2	0.02	1.0	0.09	2.2	0.10
Q5(richest)	7.1	2.24	3.3	0.15	0.0	0.01	0.2	0.04	0.9	0.06	2.2	0.08
All	40.3	1.21	3.1	0.09	0.1	0.01	0.2	0.01	0.9	0.05	2.0	0.05

Note: table based on de jure members of household i.e. usual residents



---

### 3.2 Selected age distributions by income quintile

---

	<b>Females Age 18–49</b>	<b>Persons Age 50+</b>	<b>Persons Age 60+</b>
Q1(poorest)	456	225	94
Q2	355	197	94
Q3	393	229	112
Q4	369	206	98
Q5(richest)	281	147	66
All	1,854	1,004	463

Note: table based on de jure members of household i.e. usual residents

---

### 3.3 Characteristics of head of household by income quintile

---

	Mean Age of Head	SE	Median Education of Head	Percent Female Head	SE
Q1 (poorest)	42	1.15	2	47.6	3.48
Q2	43	1.14	3	35.2	4.25
Q3	43	2.10	4	38.9	5.09
Q4	44	1.17	4	39.7	2.84
Q5 (richest)	43	1.17	5	20.7	3.27
All	43	0.69	3	37.2	1.93

#### Education

1=no formal education

2=less than primary school

3=primary school completed

4=secondary school completed

5=high school (or equivalent) completed

6=college/pre-university/university completed

7=post graduate degree completed

Note: table based on de jure members of household i.e. usual residents

### 3.4 Household population: percent distribution of the de jure population by age, residence, marital status and education according to sex

	Male	SE	Female	SE	Missing	Total	SE
<b>Age</b>							
0-4	6.4	0.50	7.5	0.50		7.00	0.40
5-14	22.8	1.10	21.8	0.80		22.30	0.70
15-29	30.5	1.40	29.0	0.80		29.70	0.90
30-44	22.1	1.10	21.4	0.80		21.70	0.80
45-59	12.1	0.90	12.5	0.60		12.30	0.60
60-69	3.3	0.30	4.6	0.50		4.00	0.30
70-79	1.1	0.20	2.0	0.30		1.60	0.20
80+	0.3	0.10	0.8	0.40		0.60	0.20
Missing	1.4	0.70	0.3	0.10		0.90	0.30
<b>Residence</b>							
Urban	56.1	1.00	51.5	1.50		53.70	1.00
Rural	43.9	1.00	48.5	1.50		46.30	1.00
Missing	0.0	0.00	0.0	0.00		0.00	0.00
<b>Marital_Status</b>							
Never	64.7	1.70	64.9	1.30		64.80	1.30
Currently	24.3	1.40	19.5	0.80		21.90	1.00
Separated	1.0	0.20	1.6	0.40		1.30	0.30
Divorced	1.1	0.20	1.7	0.20		1.40	0.20
Widowed	1.6	0.20	6.4	0.60		4.00	0.30
CoHabiting	3.3	0.60	2.9	0.40		3.10	0.40
Missing	4.0	0.90	2.9	0.60		3.50	0.70
<b>Education</b>							
NoFormal	15.0	0.80	15.5	0.80		15.30	0.70
LessthanPrimary	22.8	1.00	21.8	1.00		22.30	0.80
Primary	20.5	1.00	22.9	1.00		21.80	0.80
Secondary	17.3	0.80	17.9	1.10		17.60	0.80
HighSchool	14.3	1.00	13.4	0.90		13.80	0.80
College	5.4	0.60	5.4	0.60		5.40	0.50
PostGraduate	2.0	0.40	1.6	0.30		1.80	0.30
Missing	2.7	0.70	1.5	0.30		2.00	0.40
Total	100.0		100.0			100.00	
Number	5,067.0		5,358.0			10,425.00	
Number of Households						2,552.00	

### 3.5 Background characteristics of respondents: percent distribution of men and women by age, residence, marital status and education

	Male	SE	Female	SE	Missing	Total	SE
<b>Age</b>							
18-29	39.2	2.60	36.2	1.80		37.70	1.50
30-44	32.7	2.00	32.0	1.40		32.30	1.30
45-59	19.2	1.60	19.6	1.20		19.40	1.00
60-69	6.1	0.90	7.3	0.90		6.70	0.70
70-79	2.4	0.50	3.6	0.70		3.00	0.50
80+	0.5	0.20	1.2	0.50		0.80	0.30
Missing	0.0	0.00	0.0	0.00		0.00	0.00
<b>Residence</b>							
Urban	60.8	1.80	52.6	1.60		56.50	0.70
Rural	39.2	1.80	47.4	1.60		43.50	0.70
Missing	0.0	0.00	0.0	0.00		0.00	0.00
<b>Marital_Status</b>							
Never	50.1	2.80	49.6	1.90		49.80	1.80
Currently	39.6	2.40	29.6	1.60		34.40	1.60
Separated	0.8	0.30	1.7	0.40		1.20	0.30
Divorced	2.1	0.50	3.6	0.60		2.80	0.40
Widowed	2.3	0.50	10.5	1.20		6.60	0.70
CoHabiting	5.0	1.20	5.1	1.00		5.00	0.90
Missing	0.2	0.10	0.0	0.00		0.10	0.10
<b>Education</b>							
NoFormal	9.7	1.10	9.8	1.10		9.80	0.90
LessthanPrimary	11.4	1.30	14.4	1.30		12.90	1.00
Primary	21.3	1.70	20.6	1.40		20.90	1.20
Secondary	23.9	1.70	23.4	1.50		23.60	1.20
HighSchool	21.5	1.70	20.4	1.50		21.00	1.30
College	9.2	1.10	8.7	1.00		8.90	0.90
PostGraduate	3.0	0.60	2.6	0.70		2.80	0.50
Missing	0.0	0.00	0.1	0.10		0.10	0.10
Total	100.0		100.0			100.00	
Number	1,129.0		1,222.0			2,351.00	

#### 4.1 Prevalence of smoking and average daily tobacco consumption

	Current daily smoker	SE	Smoker, not daily	SE	Non-smoker	SE	Missing	Average daily tobacco consumption*	SE	Number of respondents
<b>Sex</b>										
Male	22.2	1.90	13.1	1.30	60.0	2.10	4.6	8.9	0.60	1,129
Female	7.0	0.80	4.0	0.70	86.9	1.10	2.2	6.2	0.50	1,222
Missing										0
<b>Residence</b>										
Urban	16.3	1.50	9.1	1.10	71.3	1.50	3.2	8.8	0.70	1,329
Rural	11.7	1.50	7.3	1.20	77.5	2.10	3.5	7.0	0.60	1,022
Missing										0
<b>Income Quintile</b>										
Q1	11.7	2.30	9.5	1.90	76.2	3.00	2.6	6.3	1.00	492
Q2	15.2	2.00	5.2	1.30	76.4	2.40	3.3	7.2	1.10	475
Q3	15.6	1.90	9.4	1.50	71.9	2.40	3.1	8.4	0.80	483
Q4	15.9	2.10	8.2	1.90	70.3	2.80	5.6	8.8	1.00	405
Q5	15.6	2.40	9.3	1.50	73.5	2.80	1.7	10.9	0.90	331
Missing										165
<b>Age</b>										
18-29	11.9	1.30	8.2	1.20	76.8	1.50	3.1	8.5	0.90	886
30-44	16.9	1.70	8.7	1.20	70.9	2.00	3.5	8.9	0.70	760
45-59	16.4	2.00	9.4	1.70	70.7	2.40	3.5	7.7	0.70	456
60-69	14.4	3.50	7.6	2.60	72.8	4.40	5.2	4.5	0.60	158
70-79	3.7	1.90	4.2	3.10	92.1	3.50	0.0	8.3	1.50	71
80+	16.0	7.60	0.0	0.00	84.0	7.60	0.0	3.3	1.10	20
Missing										0
All	14.3	1.10	8.4	0.80	74.0	1.30	3.3	8.2	0.50	2,351

\* Denominator used is current daily smoker

## 4.2 Prevalence of life time abstainers, non-heavy drinkers, infrequent heavy drinkers and frequent heavy drinkers

	Life time abstainers	SE	Non-heavy drinkers	SE	Infrequent Heavy Drinkers*	SE	Frequent Heavy drinkers**	SE	Missing	Number of respondents
<b>Sex</b>										
Male	56.9	2.20	23.4	1.80	13.9	1.30	4.0	0.70	1.8	1,129
Female	82.7	1.40	12.8	1.30	3.4	0.60	0.5	0.20	0.6	1,222
Missing										0
<b>Residence</b>										
Urban	67.7	1.70	18.9	1.40	9.2	0.90	3.0	0.60	1.2	1,329
Rural	73.7	2.60	16.5	2.20	7.4	1.20	1.1	0.40	1.2	1,022
Missing										0
<b>Income Quintile</b>										
Q1	74.7	3.50	17.4	3.00	6.3	1.70	1.1	0.50	0.4	492
Q2	72.9	2.90	15.4	2.60	7.9	1.60	2.0	0.80	1.8	475
Q3	69.9	3.30	17.4	2.40	9.7	2.10	2.3	0.70	0.6	483
Q4	69.9	2.60	16.8	2.20	8.7	1.60	2.3	0.90	2.3	405
Q5	60.4	4.10	24.2	3.10	10.6	2.50	4.1	1.30	0.8	331
Missing										165
<b>Age</b>										
18-29	71.7	1.90	15.5	1.40	9.7	1.10	2.0	0.50	1.0	886
30-44	68.2	2.40	17.9	1.90	9.8	1.30	2.8	0.70	1.4	760
45-59	72.1	2.50	18.0	2.20	6.4	1.60	1.7	0.60	1.8	456
60-69	62.6	4.80	29.6	4.70	4.6	2.40	3.0	1.50	0.3	158
70-79	86.7	4.40	11.4	4.10	1.9	1.90	0.0	0.00	0.0	71
80+	53.7	17.20	46.3	17.20	0.0	0.00	0.0	0.00	0.0	20
Missing										0
All	70.3	1.50	17.9	1.30	8.4	0.70	2.2	0.40	1.2	2,351

\*Infrequent heavy drinkers: 1-2 days with 5 or more standard drinks per week(last 7 days)

\*\*Frequent heavy drinkers: 3 or more days with 5 or more standard drinks per week(last 7 days)

### 4.3 Prevalence of insufficient intake of fruit and vegetables and insufficient physical activity

	Fruit and vegetable intake					Physical Activity					Number of respondents
	*Insufficient	SE	Sufficient	SE	Missing	**Insufficient	SE	Sufficient	SE	Missing	
Sex											
Male	71.0	2.40	29.0	2.40	0.0	33.6	2.60	66.3	2.70	0.1	1,129
Female	68.8	2.00	31.2	2.00	0.0	39.2	2.30	60.8	2.30	0.0	1,222
Missing											0
Residence											
Urban	65.1	2.40	34.9	2.40	0.0	40.5	2.60	59.5	2.60	0.1	1,329
Rural	76.0	2.60	24.0	2.60	0.0	31.4	3.30	68.6	3.30	0.0	1,022
Missing											0
Income Quintile											
Q1	84.6	2.40	15.4	2.40	0.0	35.9	4.80	64.1	4.80	0.0	492
Q2	75.6	3.80	24.4	3.80	0.0	42.1	3.80	57.6	3.90	0.2	475
Q3	62.2	4.10	37.8	4.10	0.0	36.1	3.40	63.9	3.40	0.0	483
Q4	62.5	3.50	37.5	3.50	0.0	35.1	3.40	64.9	3.40	0.0	405
Q5	59.9	4.20	40.1	4.20	0.0	32.1	4.20	67.9	4.20	0.0	331
Missing											165
Age											
18-29	68.4	2.10	31.6	2.10	0.0	28.0	2.40	72.0	2.40	0.0	886
30-44	71.4	2.30	28.6	2.30	0.0	36.3	2.60	63.5	2.60	0.1	760
45-59	70.2	2.90	29.8	2.90	0.0	44.1	3.50	55.9	3.50	0.0	456
60-69	67.5	4.90	32.5	4.90	0.0	43.5	5.10	56.5	5.10	0.0	158
70-79	73.4	5.50	26.6	5.50	0.0	64.1	6.50	35.9	6.50	0.0	71
80+	73.7	18.50	26.3	18.50	0.0	92.9	5.70	7.1	5.70	0.0	20
Missing											0
All	69.8	1.80	30.2	1.80	0.0	36.5	2.10	63.4	2.10	0.0	2,351

\*Insufficient intake of fruit/vegetables: less than 5 servings of fruit/vegetables per one typical day

\*\*Insufficient physical activity: less than 150 minutes per week(last 7 days) spent on walking/moderate activity/vigorous activity

#### 4.4 Access to improved drinking-water: percent distribution of households by type of access to drinking water

	Piped into households	SE	other improved sources	SE	Total improved sources	SE	No improved sources	SE	Missing	Number of households
<b>Residence</b>										
Urban	81.0	3.40	10.6	3.20	91.6	1.30	1.4	0.70	6.9	1,524
Rural	44.5	4.40	31.8	4.30	76.3	3.60	17.5	3.30	6.2	1,028
Missing										0
<b>Income_Quintile</b>										
Q1(poorest)	26.9	4.40	39.2	5.30	66.1	5.10	27.5	4.70	6.4	594
Q2	56.9	6.00	33.2	6.20	90.1	1.80	3.7	1.10	6.3	543
Q3	84.6	3.10	7.3	2.20	92.0	2.00	2.1	0.90	5.9	529
Q4	89.8	1.90	1.0	0.50	90.8	1.80	0.7	0.50	8.4	406
Q5(richest)	91.8	2.00	0.1	0.10	91.9	2.00	0.0	0.00	8.1	325
Missing										154
Total	66.3	2.70	19.1	2.50	85.4	1.70	7.9	1.40	6.6	2,552

other improved sources: public standpipe/protected tube well/borehole/protected dug well/protected spring/rainwater collection

no improved sources: unprotected well/unprotected spring/water taken directly from a pond or stream/tanker truck water/vendor provided water



#### 4.5 Access to improved sanitation: percent distribution of households by type of sanitation facility

	Flush toilet to sewage system	SE	Other improved toilet facilities	SE	Total improved sanitation	SE	No improved sanitation	SE	Missing	Number of households
<b>Residence</b>										
Urban	63.0	3.70	3.4	1.30	66.5	3.50	27.8	3.50	5.7	1,524
Rural	21.9	3.60	29.5	4.30	51.4	4.50	44.6	4.60	4.0	1,028
Missing										0
<b>Income_Quintile</b>										
Q1(poorest)	8.4	2.40	24.2	4.60	32.6	5.00	63.6	5.00	3.8	594
Q2	26.6	4.00	21.2	3.80	47.7	5.20	47.6	5.60	4.6	543
Q3	57.1	5.20	10.7	2.50	67.8	5.00	27.2	5.00	5.0	529
Q4	77.3	3.50	4.8	1.70	82.1	3.40	10.9	3.00	6.9	406
Q5(richest)	87.1	2.60	1.9	1.40	89.0	2.20	4.2	1.90	6.8	325
Missing										154
Total	46.5	2.60	13.9	1.90	60.4	2.70	34.6	2.80	5.0	2,552

other improved sanitation facilities: connection to septic system/pour-flush latrine/covered dry latrine(with privacy) [provided facilities not shared]  
no improved sanitation: uncovered dry latrine(without privacy)/bucket latrine/no facilities(open defecation)

#### 4.6 Solid Fuel use for cooking: percent distribution of households by type of cooking fuel used

	Electricity, Gas	SE	Kerosene	SE	Solid fuels on improved stove	SE	Solid fuels on traditional stove	SE	Total solid fuel use	SE	Missing	Number of households
<b>Residence</b>												
Urban	81.1	2.70	5.1	1.50	1.3	0.60	5.0	1.60	6.3	1.70	7.5	1,524
Rural	41.3	4.30	16.0	3.10	4.2	1.30	34.0	3.90	38.2	4.00	4.5	1,028
Missing												0
<b>Income_ Quintile</b>												
Q1(poorest)	15.7	3.50	23.7	4.70	3.6	1.70	53.1	5.10	56.7	4.90	3.9	594
Q2	64.3	4.70	13.8	3.10	2.9	0.90	12.9	2.30	15.9	2.50	6.1	543
Q3	84.7	2.90	3.7	1.60	3.3	1.20	2.8	1.00	6.1	1.70	5.5	529
Q4	89.8	2.00	0.3	0.30	1.3	1.00	0.3	0.20	1.6	1.00	8.2	406
Q5(richest)	90.4	2.20	0.0	0.00	0.0	0.00	0.0	0.00	0.0	0.00	9.6	325
Missing												154
Total	65.1	2.40	9.5	1.60	2.5	0.60	16.7	1.90	19.2	1.90	6.3	2,552

## 5.01 Tuberculosis

		Tuberculosis			
	Total	Need	Coverage	SE	M
Sex					
Female	1,222	11.3	25.6	4.2	0.6
Male	1,129	10.3	32.4	5.1	0.0
Missing	0				
Residence					
Urban	1,329	7.7	32.7	5.5	0.0
Rural	1,022	14.9	25.9	3.8	0.6
Missing	0				
Income_Quintile					
Q1(poorest)	492	15.4	32.8	5.7	1.2
Q2	475	11.3	24.1	6.0	0.0
Q3	483	13.2	35.4	6.9	0.0
Q4	405	8.2	21.1	7.3	0.0
Q5(richest)	331	4.4	24.4	11.8	0.0
Missing	165				
Age					
18-29	886	7.8	20.8	5.3	0.0
30-44	760	9.8	29.8	5.7	1.2
45-59	456	15.4	33.3	5.9	0.0
60-69	158	17.3	28.3	11.3	0.0
70-79	71	14.5	51.4	16.5	0.0
80+	20	15.4	0.0	0.0	0.0
Missing	0				
Total	2,351	10.8	28.7	3.2	0.3

**M = % Missing of Covered      SE= Standard Error of % Covered**

**Tuberculosis Indicators:**

**"Need" = % of all respondents with self-reported continuous cough lasting 3 weeks, OR had blood in phlegm, OR had coughed blood in the last 12 months**

**"Coverage" = % of respondents with self reported symptoms who indicated receiving a TB screening test in the last 12 months.**

## 5.02 HIV Prevention and Screening

	Total (persons of reproductive age 18-49)	Voluntary Counselling and Testing for HIV/AIDS				Condom Usage			
		Need	Coverage	SE	M	Need	Coverage	SE	M
Sex									
Females	947	72.1	21.2	2.1	15.6	39.6	43.2	3.2	2.9
Males	925	77.3	11.0	1.7	47.2	44.4	54.6	3.5	4.4
Missing									
Residence									
Urban	1,084	76.5	18.7	1.9	30.1	42.2	53.0	3.3	4.4
Rural	788	72.1	12.0	2.1	34.2	41.6	43.7	4.2	2.7
Missing									
Income_Quintile									
Q1(poorest)	378	71.5	7.7	2.2	34.7	43.8	41.3	6.0	2.4
Q2	380	75.0	10.4	2.0	35.9	42.1	40.3	4.6	2.3
Q3	391	75.2	20.3	3.7	25.7	45.5	52.0	5.9	2.9
Q4	314	76.3	16.6	2.9	33.5	46.7	60.5	4.6	3.9
Q5(richest)	272	78.3	27.2	3.9	29.8	30.3	61.8	7.7	5.5
Missing	138								
Total	1,872	74.7	16.0	1.4	31.8	42.0	49.1	2.6	3.7

M = % Missing of Covered SE= Standard Error of % Covered

**HIV Prevention and Screening Indicators:**

"Total" = number of respondents of reproductive age.

"Voluntary Counselling and Testing for HIV/AIDS Need" = % of respondents of reproductive age who are sexually active, i.e. have had sexual intercourse in the last 12 months.

"Voluntary Counselling and Testing for HIV/AIDS Coverage" = % of respondents of reproductive age who are sexually active who indicated having taken an HIV test and receiving the results of test.

"Condom Usage Need" = % of respondents of reproductive age whose last sexual encounter during the last 12 months is classified as risky sexual behavior, i.e. having had sexual intercourse with a non-cohabitating partner .

"Condom Usage Coverage" = % of respondents of reproductive age who used a condom last time had risky sex during the last 12 months (with non-cohabitating partner).

### 5.03 Antenatal Care and Mother to Child Transmission of HIV

	Antenatal Care											Maternal to Child HIV Trans.			
	Women 18-49	Birth in last 5 years	Cov	SE	Visit 1x	Visit 2x	Visit 3x	Blood pressure checked	Blood sample taken	Told Signs of Pregnancy Complications	M	Birth in last 2 years	Cov	SE	M
<b>Residence</b>															
Urban	500	22.3	38.4	5.5	69.7	66.3	60.5	78.8	71.3	57.6	32.5	9.3	46.5	7.4	13.1
Rural	447	28.5	31.9	4.8	66.4	63.1	57.1	76.3	66.2	54.0	37.7	14.5	25.9	6.0	10.7
Missing															
<b>Income_Quintile</b>															
Q1(poorest)	216	29.5	27.0	7.5	63.9	62.2	51.1	72.9	63.3	50.2	32.2	14.6	26.7	8.1	14.0
Q2	164	26.7	37.5	7.4	74.1	63.7	59.4	80.8	74.3	56.3	32.7	11.0	40.0	12.5	0.0
Q3	188	27.0	47.4	8.4	71.2	69.2	68.7	74.5	64.2	60.0	31.9	13.3	40.7	11.8	10.8
Q4	163	19.6	35.1	8.7	69.5	67.8	67.8	88.7	75.6	68.0	44.6	10.0	50.9	12.6	16.7
Q5(richest)	132	18.5	50.5	11.5	73.2	73.2	73.2	78.9	79.8	61.8	28.7	5.5	43.0	14.9	15.1
Missing	83														
Total	947	25.2	35.0	3.7	67.9	64.6	58.7	77.5	68.6	55.7	35.3	11.7	34.5	5.0	11.7

M = % Missing of Covered SE= Standard Error of %Covered

Antenatal Care Indicators:

Total = Number of female respondents of reproductive age (18-49 years old)

"Birth in Last 5 Years" = % of female respondents of reproductive age indicating having had a live birth in the last 5 years.

"Cov" = % of female respondents of reproductive age with live birth in the last 5 years who indicated having been seen at least 3 times or more by health care professional, received blood pressure, blood sample taken, and told signs about complications for their last pregnancy (aggregate antenatal care indicator).

"Visit 1x" "Visit 2x" "Visit 3x" = % of female respondents of reproductive age with live birth in the last 5 years who indicated having been seen at least once, twice or three times or more respectively by a health care professional during their last pregnancy.

"Blood pressure checked" = % of female respondents of reproductive age with live birth in the last 5 years who had blood pressure taken when they saw health care professional during their last pregnancy.

"Blood sample taken" = % of female respondents of reproductive age with live birth in the last 5 years who had a blood sample taken when they saw health care professional during their last pregnancy.

"Told Signs of Pregnancy Complications" = % of female respondents of reproductive age with live birth in the last 5 years who had been told signs of pregnancy complications when they saw health care professional during their last pregnancy.

Maternal to Child HIV Transmission Indicators:

"Birth in last 2 years" = % of female respondents of reproductive age indicating having had a live birth in the last 2 years.

"Cov" = % of female respondents of reproductive age with live birth in the last 2 years who indicated having been counseled and tested and given results for HIV during their last pregnancy.

## 5.04 Birth Delivery Care

	Women 18-49	Delivery Care				Place of Delivery						
		Need	Coverage	SE	M	Public Health Facility	SE	Private Health Facility	SE	Home	SE	M
Residence												
Urban	500	22.3	90.2	3.1	6.9	70.8	5.1	16.4	4.5	3.6	2.1	9.2
Rural	447	28.5	81.6	4.4	10.5	77.1	4.5	3.8	1.8	8.8	2.3	10.4
Missing												
Income Quintile												
Q1(poorest)	216	29.5	78.0	7.0	8.7	76.6	7.1	0.0	0.0	13.4	4.5	10.1
Q2	164	26.7	94.5	3.7	5.5	82.6	5.8	7.7	4.2	1.9	1.9	7.8
Q3	188	27.0	85.9	5.2	11.2	82.3	5.9	3.8	2.7	4.9	3.0	9.0
Q4	163	19.6	93.3	4.4	6.7	84.8	5.4	8.4	4.4	0.0	0.0	6.7
Q5(richest)	132	18.5	84.3	8.1	15.7	35.1	11.0	42.7	13.1	0.0	0.0	22.1
Missing	83											
Total	947	25.2	85.6	2.8	8.8	74.1	3.3	9.7	2.4	6.4	1.6	9.8

M = % Missing of Covered SE= Standard Error of % Covered Birth Delivery Care Indicators:

Total = Number of female respondents of reproductive age (18-49 years old)

"Birth in Last 5 Years" = % of female respondents of reproductive age indicating having had a live birth in the last 5 years.

"Coverage" = % of female respondents of reproductive age with live birth in the last 5 years who indicated having received assistance with birth delivery from a health care professional (doctor, nurse or midwife) during their last birth.

"Public Health Facility" = % of female respondents of reproductive age with live birth in the last 5 years who indicated having their last birth delivered in a public health facility.

"Private Health Facility" = % of female respondents of reproductive age with live birth in the last 5 years who indicated having their last birth delivered in a private health facility.

"Home" = % of female respondents of reproductive age with live birth in the last 5 years who indicated having their last birth delivered home or in the field (etc.)

## 5.05 Child's Health - Common Illness

	Total Children under Age of 5	Fever	More liquid	SE	Same or more food	SE	M	Cough	More liquid	SE	Same or more food	SE	M	Diarrhea	More liquid	SE	Same or more food	SE	M
<b>Sex</b>																			
Females	277	36.2	13.1	3.8	42.8	5.8	5.6	35.3	16.0	4.9	52.7	36.2	5.5	8.4	17.1	9.1	50.4	11.1	7.4
Males	224	34.7	7.3	2.9	42.7	6.3	6.1	37.2	6.9	2.9	47.5	34.7	8.3	12.8	0.5	0.5	55.3	10.4	4.6
Missing	16																		
<b>Residence</b>																			
Urban	237	34.9	15.4	4.2	53.0	5.3	4.5	32.4	16.5	4.4	54.4	34.9	7.5	7.4	22.4	11.4	43.8	12.3	9.8
Rural	280	36.0	7.2	3.4	37.5	6.4	6.5	38.8	9.1	4.0	49.4	36.0	6.0	13.0	3.5	3.6	60.4	8.7	3.6
Missing																			
<b>Income_Quintile</b>																			
Q1(poorest)	127	42.8	3.8	3.2	35.5	9.4	7.1	46.4	6.2	5.6	43.2	42.8	6.5	13.5	0.0	0.0	66.3	11.8	7.6
Q2	107	34.9	9.8	5.1	50.8	8.2	14.4	35.1	14.2	6.3	65.4	34.9	14.1	10.9	11.1	10.4	55.0	17.6	14.7
Q3	102	33.6	17.6	7.4	40.4	9.4	0.0	28.1	22.6	8.7	43.4	33.6	0.0	11.1	20.0	12.9	59.5	16.1	0.0
Q4	96	29.5	11.6	6.8	48.4	9.6	3.2	39.7	11.5	5.8	51.5	29.5	8.2	5.4	0.0	0.0	55.5	17.1	0.0
Q5(richest)	58	36.1	23.7	10.3	50.7	11.7	0.7	31.5	14.6	7.2	51.0	36.1	0.0	10.5	27.4	21.5	13.0	12.2	0.0
Missing	28																		
Total	517	35.5	10.9	2.8	44.4	4.4	5.6	35.9	12.1	3.0	51.4	35.5	6.6	10.4	9.7	4.7	55.0	7.5	5.6

**M = % Missing of Covered      SE= Standard Error of % Covered**

**Child's Common Illness Indicators:**

**Total = Number of children under the age of 5 years at the time of the interview.**

**"Fever"/"Cough"/"Diarrhea" = % of children under the age of 5 with reported episode of (cough, fever, or diarrhea) in the last 3 months.**

**"More Liquid" = % of children under 5 with either fever, cough, or diarrhea in the last 3 months, that were given more liquids to drink during their illness.**

**"Same or More Food" = % of children under 5 with either fever, cough, or diarrhea in the last 3 months, that were given the same amount or more food to eat during their illness.**

## 5.06 Child's Health - Danger Signs

	Children under 5	Fast Breath	Seeking Treatment						Vomit	Seeking Treatment						No Drink or Eat	Seeking Treatment					
			Yes	SE	Public	Private	Trad	M		Yes	SE	Public	Private	Trad	M		Yes	SE	Public	Private	Trad	M
Sex																						
Females	277	0.1	100.0	0.0	57.7	32.9	5.2	0.0	13.0	97.3	2.7	61.5	33.5	4.9	0.0	14.7	91.4	4.3	72.1	24.6	3.3	0.0
Males	224	0.1	92.3	6.0	79.7	8.8	7.8	0.0	11.9	85.6	7.7	69.0	15.1	10.2	3.9	21.1	78.1	7.0	71.2	13.9	11.5	2.2
Missing	16																					
Residence																						
Urban	237	0.1	100.0	0.0	58.4	24.9	9.2	0.0	9.2	100.0	0.0	51.9	40.2	7.9	0.0	14.7	84.8	6.7	62.5	27.0	10.4	0.0
Rural	280	0.2	95.3	3.7	69.7	23.5	4.6	0.0	15.4	88.9	4.9	70.5	20.1	6.1	2.4	19.5	84.3	5.3	75.5	16.5	5.2	1.9
Missing																						
Income_Quintile																						
Q1(poorest)	127	0.2	93.1	6.3	83.8	11.9	0.0	0.0	21.5	90.7	5.0	77.8	16.9	0.0	3.8	24.7	85.2	6.4	79.5	15.7	0.0	3.3
Q2	107	0.2	96.9	3.2	80.2	19.8	0.0	0.0	8.9	89.9	9.8	60.9	39.1	0.0	0.0	20.9	83.4	9.3	75.6	24.4	0.0	0.0
Q3	102	0.1	100.0	0.0	43.7	28.2	28.1	0.0	11.7	100.0	0.0	62.1	7.9	30.0	0.0	13.7	78.0	13.0	73.9	12.8	13.2	0.0
Q4	96	0.1	100.0	0.0	47.2	38.2	0.0	0.0	8.7	84.0	14.8	48.8	51.2	0.0	0.0	11.4	84.9	11.4	63.9	18.6	17.5	0.0
Q5(richest)	58	0.1	100.0	0.0	22.9	50.3	26.8	0.0	11.8	100.0	0.0	27.6	65.1	7.3	0.0	16.7	91.1	8.8	30.6	41.9	27.5	0.0
Missing	28																					
Total	517	0.1	96.7	2.6	66.3	23.9	6.0	0.0	12.6	92.6	3.4	63.8	27.4	6.7	1.6	17.3	84.5	4.1	70.4	20.6	7.2	1.2

**M = % Missing of those Seeking Treatment      SE= Standard Error of % Seeking Treatment**

**Child Danger Signs Indicators:**

**Total = Number of children under the age of 5 years at the time of the interview.**

**"Fast Breathing"/"Vomiting"/"No Drink or Eat" = % of children under the age of 5 with reported episodes of (fast breathing, vomiting, or no eating or drinking) in the last 3 months.**

**"Seeking Treatment" = % of children under 5 with episodes of fast breathing, vomiting, or no eating or drinking in the last 3 months that were taken for care/treatment at either a private health facility, public health facility, or traditional healer (other).**

**Note: large number of missings are usually due to not having information type of facility (either a no answer or a don't know answer).**



## 5.07 Vaccinations Meeting WHO Timeline Recommendations for Children 12 to 23 months of Age with Vaccination Card

	Children 12-23 months with card	DPT 3 Immunization			Measles		
		%Cov	SE	M	%Cov	SE	M
Sex							
Females	34	32.3	8.5	0.0	36.6	8.8	0.0
Males	28	53.1	10.5	0.0	43.4	12.1	0.0
Missing	4						
Residence							
Urban	20	41.3	10.6	0.0	32.8	10.6	0.0
Rural	46	42.1	9.8	0.0	43.3	10.7	0.0
Missing	0						
Income Quintile							
Q1(poorest)	14	31.8	14.4	0.0	23.2	12.8	0.0
Q2	16	33.9	12.4	0.0	14.5	8.0	0.0
Q3	14	50.5	20.5	0.0	67.8	16.8	0.0
Q4	14	39.8	12.4	0.0	53.5	15.3	0.0
Q5(richest)	5	70.0	18.7	0.0	47.4	19.8	0.0
Missing	4						
Total	66	41.9	7.5	0.0	40.1	8.2	0.0

M = % Missing of Covered      SE= Standard Error of % Covered

Vaccinations Meeting WHO Timeline for Children 12 - 23 months Indicators:

Total = Children 12 - 23 months with a vaccination card seen by the interviewer (does not include children less than 12 months to account for censored observations).

"DPT 3" = % of children 12 - 23 months with a vaccination card seen by the interviewer who received 3 inoculations of DTP not sooner than 6, 10 and 14 weeks respectively and before 12 months of age, and that was verified by the interviewer as being recorded on the card.

"Measles" = % of children 12 - 23 months with a vaccination card seen by the interviewer who received who received 1 inoculation of measles not sooner than 8 months of age and before 12 months of age.

## 5.08 Vaccination Status of Children 12-23 Months

	Children 12-23 months	Card seen			DPT 3 Immunization								Measles						
		Seen	SE	M	Total		Card		No Card		M	Total		Card		No Card		M	
					%Cov	SE	%Cov	SE	%Cov	SE		%Cov	SE	%Cov	SE				
Sex																			
Females	63	54.7	6.4	0.0	45.0	6.7	85.4	6.4	14.6	6.4	43.5	56.3	8.0	60.5	8.9	39.5	8.9	36.7	
Males	51	54.0	6.9	0.0	52.4	8.8	79.5	8.7	20.5	8.7	35.9	49.0	8.9	70.8	9.6	29.2	9.6	36.3	
Missing	4																		
Residence																			
Urban	45	45.6	6.8	0.0	37.9	7.0	83.2	7.5	16.8	7.5	40.6	48.0	7.7	61.2	9.4	38.8	9.4	38.9	
Rural	74	62.4	6.2	0.0	57.7	8.1	84.1	6.3	15.9	6.3	37.4	58.9	8.3	70.2	9.3	29.8	9.3	32.9	
Missing	0																		
Income_Quintile																			
Q1(poorest)	29	48.6	7.9	0.0	42.0	12.5	78.4	11.5	21.6	11.5	50.1	48.4	11.7	53.7	16.4	46.3	16.4	41.9	
Q2	27	59.5	9.6	0.0	53.0	11.1	87.0	9.1	13.0	9.1	37.8	50.2	11.4	74.0	11.8	26.0	11.8	38.6	
Q3	23	59.1	13.4	0.0	57.8	13.1	78.2	15.0	21.8	15.0	24.2	64.8	12.6	69.6	15.6	30.4	15.6	21.9	
Q4	25	55.2	11.2	0.0	47.0	11.4	93.6	6.4	6.4	6.4	40.3	51.0	11.3	71.5	15.7	28.5	15.7	36.8	
Q5(richest)	9	55.0	10.5	0.0	55.0	12.6	70.1	15.8	29.9	15.8	32.0	74.0	13.3	52.1	11.9	47.9	11.9	26.0	
Missing	6																		
Total	118	56.1	4.8	0.0	50.2	5.8	83.8	5.0	16.2	5.0	38.6	54.8	5.9	67.2	7.0	32.8	7.0	35.2	

**M = % Missing (% without adequate information to estimate Total DPT3 or Measles Coverage)**

**SE= Standard Error of % Total, DPT3 or Measles Coverage**

**Explanation of Indicators for Vaccination Status of Children 12 - 23 Months:**

**"Card Seen" = % of children 12 - 23 months of age who had a vaccination card seen by the interviewer.**

**"DPT 3 Immunization": does not account for WHO timeline recommendations.**

**"Total" = % of all children 12 - 23 months of age with DPT3 vaccination either verified by card or by recall of respondent.**

**"Card" = % of all DPT3 vaccinations among children 12-23 months that were verified by card only.**

**"No Card" = % of all DPT3 vaccinations among children 12-23 months that were based on recall of the respondent only.**

**"Measles": does not account for WHO timeline recommendations.**

**"Total" = % of all children 12 - 23 months of age with measles vaccination either verified by card or by recall of respondent.**

**"Card" = % of all Measles vaccinations among children 12-23 months that were verified by card only.**

**"No Card" = % of all Measles vaccinations among children 12-23 months that were based on recall of the respondent only.**

## 5.09 Women's Cancer Screening

	Total Females	Percent Females 18+	PAP Smear	SE	M	Percent Females 40+	Mammography / Breast Exam	SE	M
<b>Residence</b>									
Urban	642	94.7	17.3	2.2	12.5	34.3	11.0	2.0	18.4
Rural	580	95.8	9.6	1.7	14.5	36.3	1.6	1.2	21.9
Missing	0								
<b>Income_Quintile</b>									
Q1(poorest)	280	95.9	6.7	1.7	13.0	42.0	1.8	1.3	15.8
Q2	217	94.0	8.2	2.2	14.1	34.6	1.6	1.6	24.6
Q3	241	94.0	13.5	2.9	13.0	29.8	2.4	1.7	24.5
Q4	216	96.5	13.3	2.5	14.4	38.4	11.0	3.6	16.2
Q5(richest)	162	97.7	33.9	4.8	9.8	31.6	17.7	5.0	17.9
Missing	106								
<b>Age</b>									
18-29	443	36.2	12.9	2.1	12.5				
30-39	290	23.7	21.4	2.8	13.4				
40-49	214	17.5	11.5	2.2	12.4	17.5	7.7	1.6	19.3
50-59	127	10.4	7.7	2.6	13.2	10.4	5.7	2.5	17.9
60-69	90	7.3	5.8	2.9	20.9	7.3	4.3	2.4	25.1
70+	59	4.8	0.0	0.0		4.8	0.0	0.0	
Missing	0								
Total	1,222	95.2	13.6	1.4	13.4	35.2	6.4	1.2	20.1

M = % Missing of those with Pap Smear/Mammography SE= Standard Error of % with Pap Smear/Mammography

\*\*\*Note: Values in the age row under the "Females 18 plus" and "Females 40 plus" columns are column percent values.

**Women's Cancer Screening Indicators:**

"Papsmear need"= % of all female respondents aged 18-69

"Papsmear" coverage = % of those female respondents aged 18-69 who self-reported receiving a pap smear test during pelvic examination in the last 3 years.

"Mammography need" = % of all female respondents aged 40-69

"Mammography" coverage = % of those female respondents aged 40-69 who self-reported receiving a mammography test or breast examination in the last 3 years.

\*\*\*\*In several countries women above age 69 were asked the cancer screening questions, and for this reason they are included in the table. For countries that did not ask this questions of women above age 69, these values are expected to be missing.

## 5.10 Oral Health and Injuries

	Oral Health Problems					Road Traffic Accidents				Injury			
	Total	Need	Coverage	SE	M	Need	Coverage	SE	M	Need	Coverage	SE	M
<b>Sex</b>													
Female	1,222	17.9	57.8	4.2	1.8	3.5	40.6	8.4	12.9	3.8	41.2	7.3	1.8
Male	1,129	12.6	52.1	6.0	2.8	3.9	58.8	8.0	2.4	5.4	26.0	6.4	6.6
Missing	0												
<b>Residence</b>													
Urban	1,329	13.6	59.4	5.1	2.5	3.9	37.4	7.5	8.1	3.7	28.2	6.6	2.0
Rural	1,022	17.6	51.7	6.0	1.8	3.4	68.5	8.4	6.6	5.7	36.4	7.7	6.7
Missing	0												
<b>Income_ Quintile</b>													
Q1(poorest)	492	18.0	47.0	7.0	1.1	4.1	78.8	10.2	6.0	5.3	37.1	10.4	5.1
Q2	475	17.4	54.0	6.2	0.0	2.5	50.5	13.4	9.6	4.6	27.5	11.0	11.8
Q3	483	14.9	61.0	7.4	0.0	3.7	31.6	16.7	9.1	6.7	37.8	10.0	0.0
Q4	405	12.2	61.6	6.6	1.1	4.4	44.4	13.5	8.7	2.8	10.0	9.5	0.0
Q5(richest)	331	12.0	64.1	13.4	7.8	4.7	33.4	12.2	0.0	3.0	31.9	10.4	9.9
Missing	165												
<b>Age</b>													
18-29	886	11.5	63.2	6.5	2.3	3.9	7.9	9.6	7.9	5.1	8.8	7.9	8.8
30-44	760	14.9	56.7	5.7	1.8	3.6	3.9	11.0	3.9	5.1	2.1	8.8	2.1
45-59	456	21.2	54.1	5.8	3.6	4.2	8.1	10.9	8.1	3.0	0.0	13.7	0.0
60-69	158	15.8	50.9	12.9	0.0	3.0	25.2	23.8	25.2	5.1	0.0	17.5	0.0
70-79	71	26.0	14.3	9.5	0.0	1.5	0.0	0.0	0.0	1.7	0.0	0.0	0.0
80+	20	29.9	76.9	18.6	0.0	0.0	0.0	0.0	0.0	1.9	0.0	0.0	0.0
Missing	0												
Total	2,351	15.4	55.6	3.9	2.2	3.7	49.9	6.6	7.5	4.6	32.6	5.0	4.5

M = % Missing of % Covered      SE= Standard Error of % Covered

### Indicators:

#### Oral Health:

"Need" = % of all respondents indicating any problems in the last 12 months with their mouth and/or teeth.

"Coverage" = % of respondents reporting problems with their mouth and teeth who indicated receiving dental or medical care in last 12 months.

#### Road Traffic Accident:

"Need" = % of all respondents indicating having suffered bodily injury from a road traffic accident in last 12 months.

"Coverage" = % of respondents reporting having suffered bodily injury from a road traffic accident in last 12 months who indicating having received treatment for their injuries on-site or at health facility within 1 hour of accident .

#### Injuries from Non-traffic Accidents:

"Need" = % of all respondents indicating having suffered bodily injury due to non-traffic accidents in last 12 months.

"Coverage" = % of respondents reporting having suffered bodily injury due to non-traffic accidents in last 12 months who indicating having received treatment for injuries on-site or at health facility within 1 hour of accident

## 5.11 Self Reported Non-Communicable Conditions

	Angina					Osteo-Arthritis				Asthma				Diabetes			
	Total	Need	Coverage	SE	M	Need	Coverage	SE	M	Need	Coverage	SE	M	Need	Coverage	SE	M
<b>Sex</b>																	
Female	1,222	6.6	39.2	6.5	0.6	13.3	59.5	4.5	5.3	6.4	42.1	7.3	1.6	10.6	61.3	5.4	6.1
Male	1,129	2.2	46.2	9.6	0.0	5.9	53.1	8.0	0.0	5.8	34.5	7.0	4.0	5.9	64.9	7.7	3.0
Missing	0																
<b>Residence</b>																	
Urban	1,329	3.9	44.6	7.0	1.0	8.0	55.8	6.1	4.4	6.1	38.2	6.7	4.8	8.1	73.2	5.7	6.2
Rural	1,022	5.3	37.2	8.1	0.0	12.0	59.3	6.3	3.2	6.2	39.2	10.1	0.0	8.6	49.5	7.0	3.7
Missing	0																
<b>Income_Quintile</b>																	
Q1(poorest)	492	6.0	46.3	10.9	0.0	11.8	50.0	7.0	2.4	5.2	47.1	11.8	0.0	9.5	50.0	10.2	0.0
Q2	475	3.0	29.3	13.7	0.0	9.9	56.2	10.3	8.1	4.9	40.5	13.7	5.3	7.4	47.8	13.2	9.3
Q3	483	3.9	36.8	12.4	0.0	8.5	55.3	9.9	2.9	7.5	29.4	10.6	6.1	5.5	71.3	9.8	10.4
Q4	405	6.5	43.0	9.8	0.0	11.1	59.6	8.5	2.9	7.4	33.5	9.9	0.0	12.3	69.3	7.8	5.9
Q5(richest)	331	3.1	60.9	15.5	5.0	7.6	72.4	9.2	0.0	5.1	48.9	11.8	2.7	8.2	89.9	6.8	0.1
Missing	165																
<b>Age</b>																	
18-29	886	1.3	14.7	9.0	4.4	3.5	65.3	12.5	3.9	5.4	26.1	8.7	2.6	2.1	62.9	14.0	0.0
30-44	760	2.5	20.4	7.8	0.0	6.6	49.0	8.9	2.4	6.3	37.6	8.3	4.5	5.3	54.0	9.1	6.7
45-59	456	8.6	40.5	9.0	0.0	15.9	52.7	7.0	5.6	6.4	49.7	10.6	1.6	15.6	60.8	6.8	7.7
60-69	158	11.6	56.7	10.9	0.0	32.3	64.1	7.0	0.0	8.5	53.5	13.9	0.0	28.1	74.3	9.9	2.4
70-79	71	20.3	55.7	16.3	0.0	21.0	61.2	15.4	0.0	6.6	49.0	24.2	0.0	21.4	58.7	14.7	4.0
80+	20	17.3	100.0	0.0	0.0	46.1	76.4	21.2	23.6	6.0	100.0	0.0	0.0	27.8	60.5	27.3	0.0
Missing	0																
Total	2,351	4.5	40.8	5.4	0.5	9.7	57.7	4.4	3.7	6.1	38.6	5.8	2.7	8.3	62.5	5.0	5.1

**M = % Missing for Covered**

**SE= Standard Error of %Covered**

**Self Reported Non-Communicable Conditions Indicators:**

"Need" = % of total respondents indicating having received a diagnosis of the condition (angina, arthritis, asthma, diabetes) in last 12 months.

"Coverage" = % of respondents with a self-reported condition (angina, arthritis, asthma, diabetes) indicating they have received treatment or screening for the condition in the last 2 weeks.

## 5.12 Mental Health Conditions

		Depression				Schizophrenia			
	Total	Need	Coverage	SE	M	Need	Coverage	SE	M
Sex									
Female	1,222	10.2	29.3	4.8	4.8	1.0	42.0	16.0	0.0
Male	1,129	6.9	14.1	4.7	5.9	1.3	33.7	12.6	6.6
Missing	0								
Residence									
Urban	1,329	7.4	28.3	5.0	5.9	0.8	60.8	16.3	0.0
Rural	1,022	10.2	18.9	5.3	4.6	1.6	22.2	11.6	6.0
Missing	0								
Income Quintile									
Q1(poorest)	492	7.7	20.9	7.0	0.0	1.3	27.0	17.8	0.0
Q2	475	8.5	22.1	7.8	14.4	1.3	21.1	18.7	15.6
Q3	483	8.2	16.5	7.4	12.0	1.2	31.2	21.4	0.0
Q4	405	10.1	20.4	6.8	0.0	0.7	83.5	17.1	0.0
Q5(richest)	331	6.8	47.3	10.8	0.0	0.6	99.3	0.8	0.0
Missing	165								
Age									
18-29	886	6.3	15.6	5.4	9.1	0.7	82.4	16.2	0.0
30-44	760	11.5	30.7	6.0	4.9	2.0	23.9	9.4	6.4
45-59	456	8.7	25.2	8.0	0.0	1.2	24.4	20.6	0.0
60-69	158	7.6	7.3	7.2	0.0	0.0	0.0	0.0	
70-79	71	12.4	14.4	13.6	14.0	0.0	0.0	0.0	
80+	20	0.0	0.0	0.0		0.0	0.0	0.0	
Missing	0								
Total	2,351	8.6	23.4	4.0	5.2	1.1	37.4		3.6

**M = % Missing for Covered**

**SE= Standard Error of %Covered**

**Mental Health Conditions Indicators:**

"Need" = % of total respondents indicating having received a diagnosis of the condition (depression, schizophrenia) in last 12 months.

"Coverage" = % of respondents with a self-reported condition (depression, schizophrenia) indicating they have received treatment or screening for the condition in the last 2 weeks.

## 5.13 Cataracts

		Cataracts			
	Total 60+	Need	Coverage	SE	M
Sex					
Female	148	9.5	50.4	15.7	0.0
Male	101	11.2	34.6	17.6	1.3
Missing	0				
Residence					
Urban	126	9.9	57.6	14.7	1.2
Rural	123	10.4	29.4	16.3	0.0
Missing	0				
Income_Quintile					
Q1(poorest)	54	11.6	18.9	18.4	0.0
Q2	51	10.2	55.4	31.0	0.0
Q3	50	8.9	63.2	28.5	0.0
Q4	45	7.5	44.5	26.8	0.0
Q5(richest)	33	18.4	43.5	19.3	2.5
Missing	16				
Age					
60-69	158	12.9	33.2	12.4	0.0
70-79	71	4.8	77.7	17.8	4.4
80+	20	8.0	100.0	0.0	0.0
Missing	0				
Total	249	10.2	43.4	11.9	0.6

**M = % Missing of Covered    SE= Standard Error of %Covered**

**Cataracts Indicators:**

**Total = Number of respondents 60 years of age or more.**

**"Need" = % in need (respondents 60 years of age or more with self-reported diagnosis of cataracts in the last 5 years).**

**"Coverage" = % respondents 60 years of age or more with self-reported diagnosis of cataracts having indicated receiving eye surgery to remove cataracts in the last 5 years)**



**6.01 In general, rate your health today - q2000**

	Very Good	SE	Good	SE	Moderate	SE	Bad	SE	Very Bad	SE	Missing	SE	N
<b>Gender</b>													
Male	40.6	2.4	36.8	2.0	16.4	1.5	4.2	0.8	1.7	0.4	0.3	0.2	1,129
Female	29.0	1.9	35.9	1.7	24.3	1.5	7.4	0.9	2.6	0.6	0.8	0.5	1,222
M	0.0	0.0	0.0	0.0	0.0	0.0	0.0	0.0	0.0	0.0	0.0	0.0	
<b>Residence</b>													
Urban	42.2	2.4	35.2	1.8	16.0	1.3	4.5	0.7	1.4	0.4	0.6	0.4	1,329
Rural	24.6	2.4	37.9	2.3	26.3	1.9	7.6	1.1	3.1	0.7	0.6	0.3	1,022
M	0.0	0.0	0.0	0.0	0.0	0.0	0.0	0.0	0.0	0.0	0.0	0.0	
<b>Income</b>													
Q1(poorest)	22.3	2.8	35.5	2.4	28.1	2.6	8.7	1.5	4.7	1.2	0.8	0.6	492
Q2	32.1	3.1	37.1	2.6	19.3	2.1	8.4	1.5	2.7	0.8	0.3	0.2	475
Q3	40.1	4.5	34.9	3.2	18.6	2.3	4.3	1.2	1.8	0.7	0.2	0.2	483
Q4	34.3	2.9	36.3	2.7	23.5	2.4	4.5	1.3	1.0	0.8	0.4	0.3	405
Q5(richest)	53.4	3.8	34.8	3.6	10.4	1.5	1.4	0.6	0.0	0.0	0.0	0.0	331
M	25.0	4.1	43.9	4.4	20.0	4.2	6.8	2.4	0.9	0.6	3.3	2.9	165
<b>Age</b>													
18-29	45.9	2.8	38.1	2.2	12.0	1.5	2.7	0.6	0.5	0.2	0.9	0.4	886
30-44	35.9	2.2	40.9	2.3	16.6	1.7	4.9	0.9	1.4	0.4	0.2	0.2	760
45-59	23.7	3.0	32.2	2.6	30.1	2.5	9.4	1.5	3.7	1.0	0.9	0.6	456
60-69	8.7	2.7	26.8	3.9	43.1	4.9	15.2	3.4	6.3	2.7	0.0	0.0	158
70-79	14.1	4.5	18.4	5.1	49.9	6.5	12.4	5.2	5.2	2.9	0.0	0.0	71
80+	5.0	5.1	22.5	12.1	41.3	15.4	5.5	5.7	25.7	16.6	0.0	0.0	20
M	0.0	0.0	0.0	0.0	0.0	0.0	0.0	0.0	0.0	0.0	0.0	0.0	
All	34.6	1.7	36.4	1.4	20.5	1.1	5.9	0.6	2.1	0.4	0.6	0.2	2,351

## 6.02 Difficulty with 'work and household activities' in last 30 days - q2001

	None	SE	Mild	SE	Moderate	SE	Sever	SE	Extreme/ Cannot do	SE	Missing	SE	N
<b>Gender</b>													
Male	64.2	2.0	15.3	1.4	11.8	1.2	4.3	0.7	1.8	0.6	2.5	0.6	1,129
Female	52.5	2.0	18.6	1.3	16.1	1.3	7.9	1.0	1.9	0.4	3.0	0.7	1,222
M	0.0	0.0	0.0	0.0	0.0	0.0	0.0	0.0	0.0	0.0	0.0	0.0	
<b>Residence</b>													
Urban	64.9	1.9	15.0	1.3	12.4	1.2	3.7	0.6	1.1	0.3	2.8	0.8	1,329
Rural	49.3	2.6	19.7	1.7	16.2	1.6	9.4	1.3	2.8	0.8	2.7	0.6	1,022
M	0.0	0.0	0.0	0.0	0.0	0.0	0.0	0.0	0.0	0.0	0.0	0.0	
<b>Income</b>													
Q1(poorest)	41.9	3.5	20.1	2.4	18.6	2.4	12.7	2.2	4.0	1.3	2.7	1.1	492
Q2	58.3	3.0	17.3	2.3	12.9	1.8	8.1	1.5	1.2	0.6	2.2	0.8	475
Q3	64.2	3.0	16.0	2.0	14.4	1.8	1.9	0.6	1.5	0.6	2.0	0.7	483
Q4	60.5	2.8	14.7	2.1	13.1	2.0	5.4	1.4	1.6	0.7	4.7	1.4	405
Q5(richest)	70.6	3.0	17.2	2.4	8.6	1.6	1.6	0.6	0.2	0.2	1.8	1.0	331
M	57.8	4.6	15.8	3.4	15.8	4.0	4.5	2.0	2.3	1.3	3.9	3.0	165
<b>Age</b>													
18-29	71.4	2.4	14.0	1.5	8.3	1.2	3.0	0.8	0.8	0.3	2.5	0.6	886
30-44	61.6	2.0	16.1	1.5	12.8	1.3	5.0	0.8	1.6	0.5	2.8	0.7	760
45-59	43.4	3.0	18.9	2.2	22.1	2.5	10.7	1.7	1.0	0.4	3.9	1.3	456
60-69	30.9	4.4	26.1	4.0	24.8	4.3	9.0	2.5	7.2	3.2	2.0	2.0	158
70-79	22.6	5.0	31.8	7.0	20.7	5.6	16.6	5.6	8.3	3.9	0.0	0.0	71
80+	20.5	8.5	20.4	12.2	21.3	18.3	26.9	13.8	10.9	10.6	0.0	0.0	20
M	0.0	0.0	0.0	0.0	0.0	0.0	0.0	0.0	0.0	0.0	0.0	0.0	
All	58.2	1.6	17.0	1.1	14.0	1.0	6.2	0.7	1.8	0.4	2.8	0.5	2,351

### 6.03 Difficulty with 'moving around' in last 30 days - q2010

	None	SE	Mild	SE	Moderate	SE	Sever	SE	Extreme/ Cannot do	SE	Missing	SE	N
<b>Gender</b>													
Male	74.8	1.9	11.9	1.2	8.8	1.0	3.3	0.7	1.1	0.4	0.1	0.1	1,129
Female	65.2	1.9	17.0	1.3	11.4	1.2	4.0	0.7	1.7	0.4	0.7	0.4	1,222
M	0.0	0.0	0.0	0.0	0.0	0.0	0.0	0.0	0.0	0.0	0.0	0.0	
<b>Residence</b>													
Urban	76.8	1.8	12.3	1.1	6.8	0.8	2.2	0.6	1.2	0.4	0.7	0.4	1,329
Rural	60.7	2.6	17.6	1.9	14.4	1.5	5.6	0.9	1.6	0.4	0.1	0.1	1,022
M	0.0	0.0	0.0	0.0	0.0	0.0	0.0	0.0	0.0	0.0	0.0	0.0	
<b>Income</b>													
Q1(poorest)	53.3	4.2	18.3	2.8	18.4	2.2	8.0	1.8	2.0	0.6	0.0	0.0	492
Q2	69.6	2.9	13.4	2.1	11.7	1.8	3.5	1.1	1.4	0.6	0.4	0.3	475
Q3	72.3	2.3	15.5	1.7	7.9	1.4	2.9	1.0	1.3	0.7	0.2	0.2	483
Q4	76.4	2.3	13.6	1.8	7.0	1.5	1.1	0.5	1.7	0.9	0.3	0.3	405
Q5(richest)	82.9	2.2	11.9	2.0	3.3	1.1	1.1	0.5	0.8	0.6	0.0	0.0	331
M	69.9	5.0	12.3	2.8	9.1	2.6	4.8	2.8	0.0	0.0	3.9	3.0	165
<b>Age</b>													
18-29	79.8	2.1	12.0	1.5	5.9	1.0	1.0	0.4	0.8	0.4	0.5	0.3	886
30-44	74.4	2.0	13.1	1.4	8.2	1.2	3.1	0.7	0.9	0.4	0.4	0.2	760
45-59	58.4	3.3	17.5	2.2	16.9	2.0	5.1	1.1	1.5	0.6	0.5	0.5	456
60-69	46.2	5.0	23.5	3.9	19.2	3.7	9.0	3.0	1.8	1.0	0.3	0.3	158
70-79	37.3	6.0	26.5	5.2	15.1	4.5	14.1	5.2	7.0	3.5	0.0	0.0	71
80+	13.6	6.9	5.0	5.0	28.3	16.5	32.2	19.4	20.9	15.1	0.0	0.0	20
M	0.0	0.0	0.0	0.0	0.0	0.0	0.0	0.0	0.0	0.0	0.0	0.0	
All	69.8	1.5	14.6	1.0	10.1	0.8	3.7	0.5	1.4	0.3	0.4	0.2	2,351

## 6.04 Difficulty with 'vigorous activities' in last 30 days - q2011

	None	SE	Mild	SE	Moderate	SE	Sever	SE	Extreme/ Cannot do	SE	Missing	SE	N
<b>Gender</b>													
Male	64.6	2.1	13.7	1.4	9.6	1.1	6.1	0.8	5.8	0.9	0.2	0.2	1,129
Female	54.1	2.0	13.5	1.1	11.1	1.1	9.4	1.2	10.9	1.4	1.0	0.5	1,222
M	0.0	0.0	0.0	0.0	0.0	0.0	0.0	0.0	0.0	0.0	0.0	0.0	
<b>Residence</b>													
Urban	66.8	2.1	12.8	1.2	7.7	0.9	5.4	0.8	6.4	1.2	0.9	0.4	1,329
Rural	49.2	2.8	14.7	1.5	13.8	1.7	10.9	1.6	11.1	1.8	0.2	0.2	1,022
M	0.0	0.0	0.0	0.0	0.0	0.0	0.0	0.0	0.0	0.0	0.0	0.0	
<b>Income</b>													
Q1(poorest)	48.4	3.7	15.9	2.1	13.2	2.0	13.1	2.8	9.4	1.8	0.0	0.0	492
Q2	58.2	2.9	14.5	1.8	8.7	1.7	9.3	1.6	9.2	1.9	0.1	0.1	475
Q3	60.2	3.2	13.5	2.2	10.5	1.8	7.1	1.5	8.4	2.0	0.2	0.2	483
Q4	64.7	3.2	9.6	1.4	9.8	1.6	4.8	1.4	9.9	1.9	1.2	0.7	405
Q5(richest)	72.6	2.9	13.1	1.9	5.9	1.7	2.7	0.7	5.4	1.6	0.4	0.4	331
M	49.9	6.2	15.3	3.2	17.1	3.3	7.3	2.4	6.3	3.0	4.0	3.0	165
<b>Age</b>													
18-29	70.1	2.4	14.2	1.6	8.3	1.4	4.8	1.0	1.7	0.5	0.8	0.4	886
30-44	61.3	2.2	15.4	1.3	11.8	1.3	6.2	1.0	5.2	1.0	0.1	0.1	760
45-59	50.4	3.4	11.8	1.7	11.9	1.8	11.3	1.9	14.1	2.4	0.5	0.5	456
60-69	34.7	4.7	8.8	2.8	12.3	3.5	16.3	3.6	26.2	4.6	1.8	1.5	158
70-79	23.7	5.9	11.9	4.5	7.7	3.6	22.1	6.0	32.9	6.8	1.8	1.8	71
80+	11.5	6.6	5.0	5.0	7.1	5.8	0.0	0.0	76.4	9.6	0.0	0.0	20
M	0.0	0.0	0.0	0.0	0.0	0.0	0.0	0.0	0.0	0.0	0.0	0.0	
All	59.1	1.7	13.6	0.9	10.4	0.9	7.8	0.8	8.5	1.0	0.6	0.2	2,351

## 6.05 Difficulty with 'self-care' in last 30 days - q2020

	None	SE	Mild	SE	Moderate	SE	Sever	SE	Extreme/ Cannot do	SE	Missing	SE	N
<b>Gender</b>													
Male	83.8	1.7	8.6	1.3	4.8	0.9	2.2	0.5	0.6	0.4	0.1	0.1	1,129
Female	78.6	1.9	9.0	1.1	6.7	1.0	3.4	0.8	1.3	0.5	1.0	0.5	1,222
M	0.0	0.0	0.0	0.0	0.0	0.0	0.0	0.0	0.0	0.0	0.0	0.0	
<b>Residence</b>													
Urban	86.3	1.6	6.6	1.0	3.6	0.7	2.2	0.5	0.8	0.4	0.6	0.4	1,329
Rural	74.4	2.7	11.7	1.8	8.6	1.4	3.6	1.0	1.2	0.6	0.5	0.3	1,022
M	0.0	0.0	0.0	0.0	0.0	0.0	0.0	0.0	0.0	0.0	0.0	0.0	
<b>Income</b>													
Q1(poorest)	66.0	4.4	13.3	2.4	13.7	2.5	4.8	1.6	1.7	0.8	0.5	0.4	492
Q2	82.0	2.6	8.5	1.5	4.0	1.1	3.3	1.1	1.7	0.8	0.5	0.4	475
Q3	87.0	2.1	8.1	1.7	3.4	1.0	0.9	0.5	0.4	0.4	0.2	0.2	483
Q4	86.1	2.2	7.3	1.4	3.8	1.1	2.0	1.0	0.5	0.4	0.3	0.3	405
Q5(richest)	89.8	2.2	6.3	1.7	1.9	0.7	1.8	0.7	0.2	0.2	0.0	0.0	331
M	76.4	4.4	6.9	3.0	6.8	2.6	5.0	2.9	1.0	1.0	3.9	3.0	165
<b>Age</b>													
18-29	86.9	1.9	6.2	1.2	3.0	0.8	2.5	0.7	0.4	0.3	0.9	0.4	886
30-44	84.1	1.6	8.4	1.3	4.9	0.9	1.8	0.6	0.4	0.3	0.3	0.2	760
45-59	73.2	2.9	10.9	1.8	10.9	1.9	3.0	0.9	1.5	0.7	0.5	0.5	456
60-69	73.1	4.8	10.7	3.3	9.0	2.9	3.5	1.5	3.3	1.7	0.3	0.3	158
70-79	60.2	6.6	28.7	6.4	9.4	4.0	0.7	0.7	0.9	0.9	0.0	0.0	71
80+	21.6	9.0	5.0	5.0	5.0	5.1	53.1	16.8	15.4	12.2	0.0	0.0	20
M	0.0	0.0	0.0	0.0	0.0	0.0	0.0	0.0	0.0	0.0	0.0	0.0	
All	81.1	1.5	8.8	1.0	5.8	0.7	2.8	0.5	1.0	0.4	0.6	0.2	2,351

**6.06      Difficulty with 'taking care of and maintaining general appearance' in last 30 days - q2021**

	None	SE	Mild	SE	Moderate	SE	Sever	SE	Extreme/ Cannot do	SE	Missing	SE	N
<b>Gender</b>													
Male	81.3	2.0	8.8	1.3	6.2	1.0	2.8	0.6	0.6	0.3	0.3	0.2	1,129
Female	77.6	1.9	11.3	1.3	5.6	0.8	3.6	0.7	0.9	0.4	1.0	0.5	1,222
M	0.0	0.0	0.0	0.0	0.0	0.0	0.0	0.0	0.0	0.0	0.0	0.0	
<b>Residence</b>													
Urban	85.0	1.7	7.2	1.0	4.2	0.8	2.5	0.6	0.5	0.3	0.7	0.4	1,329
Rural	72.1	3.0	14.0	2.1	8.1	1.2	4.2	0.8	1.0	0.4	0.7	0.3	1,022
M	0.0	0.0	0.0	0.0	0.0	0.0	0.0	0.0	0.0	0.0	0.0	0.0	
<b>Income</b>													
Q1(poorest)	62.9	4.6	16.2	3.1	13.0	2.2	6.0	1.1	1.3	0.8	0.5	0.4	492
Q2	79.6	3.0	10.4	1.8	3.4	1.0	4.8	1.5	0.7	0.4	1.1	0.6	475
Q3	86.7	2.2	7.8	1.6	3.9	1.1	0.2	0.2	1.2	0.7	0.2	0.2	483
Q4	86.0	2.3	7.7	1.4	3.5	1.0	2.5	1.1	0.0	0.0	0.3	0.3	405
Q5(richest)	89.1	2.0	5.0	1.1	3.5	1.2	1.8	0.7	0.3	0.3	0.3	0.3	331
M	70.9	4.6	14.6	3.1	7.7	2.8	3.6	1.5	0.0	0.0	3.3	2.9	165
<b>Age</b>													
18-29	85.3	1.9	7.9	1.3	3.5	0.8	2.4	0.7	0.3	0.2	0.6	0.3	886
30-44	83.0	1.7	8.8	1.2	5.6	0.9	1.6	0.5	0.4	0.2	0.7	0.3	760
45-59	71.7	3.1	13.1	2.0	8.5	1.7	4.8	1.1	1.1	0.6	0.8	0.6	456
60-69	69.0	5.0	14.0	3.4	9.5	3.0	6.0	2.4	0.6	0.6	0.9	0.7	158
70-79	56.6	6.7	27.4	6.7	6.3	3.0	6.8	3.0	2.9	2.9	0.0	0.0	71
80+	21.6	9.0	0.0	0.0	31.2	18.6	31.8	15.0	15.4	12.2	0.0	0.0	20
M	0.0	0.0	0.0	0.0	0.0	0.0	0.0	0.0	0.0	0.0	0.0	0.0	
All	79.4	1.6	10.1	1.1	5.9	0.7	3.2	0.5	0.7	0.2	0.7	0.3	2,351

**6.07 Amount of 'bodily aches or pains' in last 30 days - q2030**

	None	SE	Mild	SE	Moderate	SE	Sever	SE	Extreme/ Cannot do	SE	Missing	SE	N
<b>Gender</b>													
Male	57.6	2.3	19.8	1.5	12.6	1.2	7.3	0.9	2.5	0.7	0.2	0.1	1,129
Female	41.1	2.0	23.5	1.5	20.1	1.4	10.6	1.2	3.9	0.8	0.7	0.4	1,222
M	0.0	0.0	0.0	0.0	0.0	0.0	0.0	0.0	0.0	0.0	0.0	0.0	
<b>Residence</b>													
Urban	56.4	2.2	21.2	1.4	13.1	1.1	6.0	0.9	2.8	0.7	0.6	0.4	1,329
Rural	39.5	2.7	22.4	2.0	21.0	1.8	13.0	1.5	3.9	0.8	0.2	0.2	1,022
M	0.0	0.0	0.0	0.0	0.0	0.0	0.0	0.0	0.0	0.0	0.0	0.0	
<b>Income</b>													
Q1(poorest)	35.2	3.6	23.6	2.7	22.1	2.5	14.1	2.0	4.8	1.4	0.2	0.2	492
Q2	52.2	3.1	18.4	2.2	14.4	2.0	10.9	2.1	3.8	1.2	0.4	0.3	475
Q3	53.9	3.5	18.6	1.8	17.2	2.2	6.8	1.4	3.3	0.9	0.2	0.2	483
Q4	49.6	3.4	24.8	2.6	13.6	1.7	8.0	1.5	3.6	1.2	0.4	0.3	405
Q5(richest)	59.6	3.0	24.3	2.6	12.0	2.4	3.1	0.8	0.9	0.4	0.1	0.1	331
M	44.2	6.0	21.9	4.3	20.4	4.8	9.5	2.4	0.7	0.7	3.3	2.9	165
<b>Age</b>													
18-29	62.0	2.4	19.6	1.7	9.5	1.2	5.8	1.1	2.4	0.7	0.5	0.3	886
30-44	51.4	2.4	21.8	1.8	17.3	1.7	7.0	1.1	2.3	0.6	0.2	0.2	760
45-59	34.6	3.0	23.5	2.2	24.6	2.2	12.3	1.9	4.1	1.1	0.8	0.6	456
60-69	26.3	4.5	21.1	4.0	25.2	4.2	22.6	3.6	4.5	1.9	0.3	0.3	158
70-79	16.5	4.8	35.3	6.9	28.0	6.2	15.8	5.4	4.4	2.6	0.0	0.0	71
80+	8.1	5.0	26.3	18.4	6.9	5.6	17.6	8.5	41.1	15.4	0.0	0.0	20
M	0.0	0.0	0.0	0.0	0.0	0.0	0.0	0.0	0.0	0.0	0.0	0.0	
All	49.0	1.7	21.7	1.2	16.5	1.0	9.0	0.8	3.2	0.5	0.5	0.2	2,351

**6.08 Amount of 'bodily discomfort' in last 30 days - q2031**

	None	SE	Mild	SE	Moderate	SE	Sever	SE	Extreme/ Cannot do	SE	Missing	SE	N
<b>Gender</b>													
Male	60.1	2.0	19.5	1.5	12.4	1.2	5.8	0.8	1.3	0.6	0.8	0.3	1,129
Female	43.4	2.1	22.5	1.4	21.3	1.6	9.2	1.0	2.2	0.6	1.3	0.5	1,222
M	0.0	0.0	0.0	0.0	0.0	0.0	0.0	0.0	0.0	0.0	0.0	0.0	
<b>Residence</b>													
Urban	58.9	2.1	20.3	1.4	12.3	1.1	5.7	0.8	1.7	0.6	1.1	0.4	1,329
Rural	41.6	2.5	22.2	1.7	23.2	1.8	10.1	1.2	1.8	0.5	1.1	0.3	1,022
M	0.0	0.0	0.0	0.0	0.0	0.0	0.0	0.0	0.0	0.0	0.0	0.0	
<b>Income</b>													
Q1(poorest)	35.7	3.3	21.2	2.1	27.0	2.6	12.3	1.7	2.8	0.9	1.0	0.5	492
Q2	54.3	3.2	16.8	1.9	17.5	2.1	7.7	1.5	2.5	1.2	1.2	0.6	475
Q3	54.9	3.2	19.7	2.1	16.5	2.2	7.0	1.3	1.1	0.5	0.8	0.4	483
Q4	53.9	3.2	24.2	2.8	13.1	1.8	6.3	1.2	2.0	0.9	0.6	0.4	405
Q5(richest)	63.0	3.2	22.8	2.6	9.4	1.8	3.7	1.2	0.9	0.4	0.1	0.1	331
M	50.0	6.1	25.9	4.9	12.7	3.2	6.1	2.0	0.0	0.0	5.2	3.2	165
<b>Age</b>													
18-29	64.6	2.2	18.6	1.6	11.3	1.3	3.9	0.8	0.8	0.4	0.8	0.4	886
30-44	54.4	2.3	20.7	1.7	16.8	1.6	6.0	1.0	1.2	0.5	1.0	0.4	760
45-59	36.6	2.9	23.9	2.3	23.8	2.2	11.1	1.7	2.8	1.0	1.8	0.8	456
60-69	25.8	4.2	23.5	4.6	27.3	4.3	19.4	3.5	1.8	1.0	2.1	1.2	158
70-79	18.4	5.2	32.0	5.7	25.9	5.8	21.1	5.6	2.7	2.0	0.0	0.0	71
80+	8.1	5.0	26.3	18.4	12.9	6.4	11.5	8.7	41.1	15.4	0.0	0.0	20
M	0.0	0.0	0.0	0.0	0.0	0.0	0.0	0.0	0.0	0.0	0.0	0.0	
All	51.4	1.6	21.1	1.1	17.0	1.0	7.6	0.6	1.8	0.4	1.1	0.3	2,351



**6.09      Difficulty with 'concentrating or remembering things' in last 30 days - q2050**

	None	SE	Mild	SE	Moderate	SE	Sever	SE	Extreme/ Cannot do	SE	Missing	SE	N
<b>Gender</b>													
Male	66.0	2.0	16.9	1.4	11.1	1.1	4.3	0.9	1.2	0.4	0.6	0.2	1,129
Female	55.5	2.1	21.6	1.6	13.3	1.2	7.0	1.0	1.5	0.5	1.1	0.5	1,222
M	0.0	0.0	0.0	0.0	0.0	0.0	0.0	0.0	0.0	0.0	0.0	0.0	
<b>Residence</b>													
Urban	65.6	2.1	17.3	1.4	10.8	1.0	4.0	0.8	1.2	0.4	1.1	0.4	1,329
Rural	53.9	2.8	22.0	2.1	14.1	1.5	7.9	1.1	1.6	0.5	0.6	0.3	1,022
M	0.0	0.0	0.0	0.0	0.0	0.0	0.0	0.0	0.0	0.0	0.0	0.0	
<b>Income</b>													
Q1(poorest)	49.2	4.2	21.9	2.6	17.6	2.2	10.0	2.0	1.0	0.5	0.2	0.2	492
Q2	59.8	3.4	19.5	2.0	11.4	1.8	6.1	1.5	2.0	0.8	1.2	0.5	475
Q3	64.5	3.1	17.0	2.4	10.4	1.7	5.6	1.2	1.6	0.7	0.8	0.4	483
Q4	62.5	3.2	20.0	2.6	10.8	1.8	4.4	1.2	1.9	0.9	0.4	0.3	405
Q5(richest)	73.9	2.9	14.9	2.2	8.3	1.7	1.6	0.6	0.7	0.7	0.6	0.4	331
M	52.7	5.8	24.9	4.5	15.2	3.6	3.4	1.6	0.0	0.0	3.8	2.9	165
<b>Age</b>													
18-29	68.4	2.2	17.6	1.6	9.0	1.1	3.6	0.8	0.5	0.3	1.0	0.4	886
30-44	65.6	2.2	20.1	1.7	9.1	1.1	4.1	0.9	0.7	0.4	0.4	0.2	760
45-59	51.8	3.3	19.9	2.2	15.3	2.1	9.5	1.8	2.3	0.9	1.1	0.6	456
60-69	40.3	4.9	19.4	3.5	25.3	4.3	10.9	3.0	2.8	1.3	1.3	1.0	158
70-79	23.9	6.4	31.0	6.4	24.4	5.6	15.4	5.5	5.3	2.8	0.0	0.0	71
80+	6.0	4.8	13.6	6.9	60.5	14.1	0.0	0.0	14.9	13.8	5.0	5.0	20
M	0.0	0.0	0.0	0.0	0.0	0.0	0.0	0.0	0.0	0.0	0.0	0.0	
All	60.5	1.7	19.3	1.2	12.2	0.9	5.7	0.7	1.4	0.3	0.9	0.3	2,351

## 6.10 Difficulty with 'learning a new task' in last 30 days - q2051

	None	SE	Mild	SE	Moderate	SE	Sever	SE	Extreme/ Cannot do	SE	Missing	SE	N
<b>Gender</b>													
Male	69.9	2.3	15.0	1.5	8.7	1.4	2.7	0.6	2.6	0.8	1.1	0.3	1,129
Female	64.6	2.0	15.0	1.3	11.3	1.2	4.9	0.7	3.1	0.7	1.1	0.5	1,222
M	0.0	0.0	0.0	0.0	0.0	0.0	0.0	0.0	0.0	0.0	0.0	0.0	
<b>Residence</b>													
Urban	73.0	2.2	13.0	1.3	7.8	1.2	3.3	0.7	2.0	0.8	1.0	0.4	1,329
Rural	59.5	2.8	17.7	1.9	13.0	1.9	4.6	0.9	3.9	1.0	1.3	0.4	1,022
M	0.0	0.0	0.0	0.0	0.0	0.0	0.0	0.0	0.0	0.0	0.0	0.0	
<b>Income</b>													
Q1(poorest)	54.6	3.7	20.2	2.8	13.5	1.8	6.8	1.5	4.2	1.3	0.7	0.4	492
Q2	65.0	3.4	15.8	2.2	8.7	2.2	3.7	0.9	5.2	1.8	1.6	0.7	475
Q3	69.5	3.3	12.1	2.0	11.5	2.6	4.2	1.2	2.0	0.8	0.7	0.4	483
Q4	71.1	2.6	13.3	1.8	8.7	1.7	3.4	1.1	2.4	1.0	1.1	0.5	405
Q5(richest)	82.9	3.2	11.1	2.5	3.8	1.2	1.5	0.6	0.5	0.3	0.1	0.1	331
M	62.1	5.0	17.7	3.5	15.3	3.7	0.8	0.6	0.3	0.3	3.8	2.9	165
<b>Age</b>													
18-29	74.4	2.1	14.8	1.5	7.0	1.3	1.3	0.5	1.3	0.6	1.2	0.4	886
30-44	72.0	2.3	13.6	1.8	9.0	1.2	2.8	0.6	2.0	0.7	0.6	0.3	760
45-59	58.0	3.2	17.5	2.0	13.8	2.0	6.0	1.3	3.7	1.2	1.0	0.6	456
60-69	50.2	5.1	16.0	3.7	15.2	3.3	11.0	2.8	3.8	1.7	3.9	1.8	158
70-79	35.3	7.0	18.8	5.4	18.7	5.0	10.7	4.2	16.5	5.3	0.0	0.0	71
80+	13.6	6.9	0.0	0.0	28.2	18.7	31.2	13.9	26.9	13.8	0.0	0.0	20
M	0.0	0.0	0.0	0.0	0.0	0.0	0.0	0.0	0.0	0.0	0.0	0.0	
All	67.1	1.8	15.0	1.1	10.1	1.1	3.9	0.5	2.9	0.6	1.1	0.3	2,351

**6.11 Difficulty with 'personal relationships or participation in the community' in last 30 days - q2060**

	None	SE	Mild	SE	Moderate	SE	Sever	SE	Extreme/ Cannot do	SE	Missing	SE	N
<b>Gender</b>													
Male	69.8	2.5	14.5	1.3	9.8	1.4	3.1	0.6	1.8	0.6	0.9	0.3	1,129
Female	69.7	2.1	14.1	1.2	9.7	1.2	3.3	0.6	2.3	0.6	0.9	0.4	1,222
M	0.0	0.0	0.0	0.0	0.0	0.0	0.0	0.0	0.0	0.0	0.0	0.0	
<b>Residence</b>													
Urban	72.7	2.2	12.9	1.2	8.4	1.2	2.7	0.5	2.1	0.5	1.2	0.5	1,329
Rural	65.9	3.3	16.0	1.8	11.5	1.9	3.9	0.8	2.1	0.7	0.5	0.2	1,022
M	0.0	0.0	0.0	0.0	0.0	0.0	0.0	0.0	0.0	0.0	0.0	0.0	
<b>Income</b>													
Q1(poorest)	64.1	4.8	16.6	2.4	12.5	2.9	5.1	1.2	1.4	0.8	0.2	0.2	492
Q2	67.3	3.7	14.0	2.0	12.2	2.3	1.5	0.6	3.9	1.4	1.1	0.6	475
Q3	69.1	3.0	14.2	1.8	10.5	2.0	3.6	1.0	2.2	0.9	0.4	0.3	483
Q4	71.7	3.1	13.1	1.8	8.3	1.9	3.4	0.9	2.6	1.0	0.9	0.5	405
Q5(richest)	82.7	3.2	11.6	2.6	3.1	1.1	1.1	0.5	0.7	0.4	0.8	0.8	331
M	64.8	5.4	16.7	3.3	9.5	3.0	5.2	2.7	0.0	0.0	3.8	2.9	165
<b>Age</b>													
18-29	74.3	2.3	14.2	1.5	7.9	1.3	1.6	0.5	0.9	0.4	1.0	0.5	886
30-44	73.8	2.3	12.3	1.4	9.1	1.4	3.2	0.6	1.1	0.4	0.5	0.2	760
45-59	62.9	3.4	17.9	2.0	12.5	2.0	2.7	0.9	3.1	1.0	0.9	0.6	456
60-69	61.9	4.7	12.9	2.9	8.5	2.5	9.0	2.8	5.6	2.3	2.0	1.2	158
70-79	40.3	6.3	19.9	4.8	26.7	5.5	6.5	3.6	6.7	4.6	0.0	0.0	71
80+	37.0	16.2	0.0	0.0	6.0	4.8	31.2	18.6	25.7	16.6	0.0	0.0	20
M	0.0	0.0	0.0	0.0	0.0	0.0	0.0	0.0	0.0	0.0	0.0	0.0	
All	69.8	1.9	14.3	1.0	9.8	1.0	3.2	0.4	2.1	0.4	0.9	0.3	2,351

## 6.12 Difficulty with 'dealing with conflicts and tensions' in last 30 days - q2061

	None	SE	Mild	SE	Moderate	SE	Sever	SE	Extreme/ Cannot do	SE	Missing	SE	N
<b>Gender</b>													
Male	66.3	2.4	16.3	1.6	10.0	1.3	3.0	0.5	2.4	0.8	2.0	0.6	1,129
Female	65.2	2.2	16.1	1.4	10.8	1.1	3.4	0.5	2.0	0.6	2.6	0.6	1,222
M	0.0	0.0	0.0	0.0	0.0	0.0	0.0	0.0	0.0	0.0	0.0	0.0	
<b>Residence</b>													
Urban	66.8	2.3	16.6	1.5	8.9	1.0	2.7	0.5	2.2	0.6	2.8	0.8	1,329
Rural	64.4	3.4	15.6	2.0	12.4	1.8	3.8	0.7	2.2	0.7	1.7	0.6	1,022
M	0.0	0.0	0.0	0.0	0.0	0.0	0.0	0.0	0.0	0.0	0.0	0.0	
<b>Income</b>													
Q1(poorest)	61.7	4.6	16.1	2.5	13.8	3.0	4.5	1.0	2.5	1.0	1.4	0.7	492
Q2	63.2	3.5	16.8	2.4	12.8	2.2	2.7	0.8	2.9	1.2	1.6	0.7	475
Q3	66.4	3.1	15.9	2.1	10.4	1.7	2.9	0.9	2.4	0.9	1.9	0.8	483
Q4	68.9	3.2	14.0	2.1	9.1	1.6	3.7	1.2	2.1	1.0	2.2	0.8	405
Q5(richest)	73.4	3.9	16.0	2.8	4.8	1.4	1.9	0.8	0.6	0.5	3.3	1.8	331
M	60.1	5.6	20.8	5.6	7.8	2.1	2.9	1.4	2.2	1.6	6.1	3.3	165
<b>Age</b>													
18-29	68.7	2.4	17.5	1.7	8.3	1.2	2.3	0.6	1.2	0.5	1.9	0.5	886
30-44	68.3	2.3	15.7	1.7	9.5	1.2	2.9	0.6	1.6	0.7	1.9	0.6	760
45-59	60.2	3.4	18.5	2.0	12.5	2.2	4.0	1.0	2.9	1.1	2.0	0.8	456
60-69	60.8	5.1	8.5	2.5	14.7	3.4	6.9	2.0	2.4	2.0	6.6	2.6	158
70-79	50.9	6.8	9.9	4.1	22.2	5.7	3.9	2.2	8.7	4.0	4.4	3.0	71
80+	52.8	16.4	5.5	5.7	16.0	7.6	0.0	0.0	25.7	16.6	0.0	0.0	20
M	0.0	0.0	0.0	0.0	0.0	0.0	0.0	0.0	0.0	0.0	0.0	0.0	
All	65.7	2.0	16.2	1.2	10.4	1.0	3.2	0.4	2.2	0.5	2.3	0.5	2,351

### 6.13 Difficulty with 'seeing and recognizing a person you know across the road (20m)' in last 30 days - q2071

	None	SE	Mild	SE	Moderate	SE	Sever	SE	Extreme/ Cannot do	SE	Missing	SE	N
<b>Gender</b>													
Male	64.4	2.8	10.4	1.3	7.0	0.9	3.4	0.7	2.1	0.8	12.8	2.3	1,129
Female	57.7	2.4	13.1	1.2	9.0	1.2	4.0	0.7	2.4	0.7	13.8	2.4	1,222
M	0.0	0.0	0.0	0.0	0.0	0.0	0.0	0.0	0.0	0.0	0.0	0.0	
<b>Residence</b>													
Urban	66.4	2.5	10.8	1.1	7.0	1.0	3.2	0.6	1.3	0.5	11.4	2.3	1,329
Rural	53.8	3.8	13.1	1.7	9.3	1.3	4.4	1.0	3.5	1.5	15.9	3.7	1,022
M	0.0	0.0	0.0	0.0	0.0	0.0	0.0	0.0	0.0	0.0	0.0	0.0	
<b>Income</b>													
Q1(poorest)	51.4	5.2	13.6	2.4	10.7	2.6	6.3	1.7	1.7	0.8	16.3	4.4	492
Q2	60.2	3.7	11.3	2.0	6.1	1.2	3.9	1.2	3.3	1.2	15.2	3.3	475
Q3	62.9	3.4	10.9	1.9	9.2	1.6	2.7	0.8	2.7	1.4	11.5	3.0	483
Q4	63.3	3.3	10.4	1.5	7.5	1.7	4.1	1.1	3.0	1.3	11.7	3.0	405
Q5(richest)	71.7	3.8	12.4	3.0	4.6	1.4	1.5	0.7	0.0	0.0	9.8	2.7	331
M	57.5	5.4	12.8	2.4	10.4	4.0	2.0	1.3	1.8	1.5	15.5	6.1	165
<b>Age</b>													
18-29	69.1	2.6	7.9	1.2	4.9	1.0	1.6	0.6	1.9	1.0	14.6	2.3	886
30-44	64.6	2.6	10.5	1.5	6.0	1.2	2.6	0.7	1.5	0.7	14.9	2.4	760
45-59	53.4	3.4	15.8	2.1	10.0	1.6	6.1	1.4	3.4	1.2	11.3	2.6	456
60-69	37.7	4.3	21.0	3.9	21.4	4.2	9.5	2.4	3.1	1.5	7.4	2.6	158
70-79	27.0	6.1	26.2	4.9	21.9	5.3	9.5	3.8	4.6	3.2	10.9	4.9	71
80+	30.4	16.4	16.4	12.0	27.3	16.7	19.8	14.5	6.0	6.3	0.0	0.0	20
M	0.0	0.0	0.0	0.0	0.0	0.0	0.0	0.0	0.0	0.0	0.0	0.0	
All	60.9	2.2	11.8	1.0	8.0	0.8	3.7	0.6	2.2	0.7	13.3	2.1	2,351

## 6.14 Difficulty with 'seeing an object at arm's length or in reading' in last 30 days - q2072

	None	SE	Mild	SE	Moderate	SE	Sever	SE	Extreme/ Cannot do	SE	Missing	SE	N
<b>Gender</b>													
Male	65.4	2.8	9.4	1.4	6.8	1.0	3.9	0.8	1.5	0.6	13.0	2.3	1,129
Female	57.5	2.3	13.1	1.3	9.0	1.2	4.7	0.9	1.7	0.5	14.0	2.4	1,222
M	0.0	0.0	0.0	0.0	0.0	0.0	0.0	0.0	0.0	0.0	0.0	0.0	
<b>Residence</b>													
Urban	67.3	2.5	9.9	1.4	6.7	0.9	3.4	0.6	1.2	0.5	11.5	2.3	1,329
Rural	53.4	3.7	13.2	1.9	9.6	1.5	5.6	1.6	2.1	0.8	16.2	3.7	1,022
M	0.0	0.0	0.0	0.0	0.0	0.0	0.0	0.0	0.0	0.0	0.0	0.0	
<b>Income</b>													
Q1(poorest)	49.2	5.1	15.3	2.8	10.8	2.6	5.9	1.5	2.5	1.0	16.3	4.4	492
Q2	61.7	3.6	9.7	1.8	6.7	1.3	4.1	1.3	2.0	0.8	15.8	3.4	475
Q3	65.2	3.6	8.2	1.6	8.8	1.8	4.8	1.6	1.3	0.6	11.7	3.0	483
Q4	63.2	3.3	10.2	1.7	7.0	1.3	5.6	1.3	2.3	0.9	11.7	3.0	405
Q5(richest)	73.0	3.7	11.0	2.7	5.3	1.4	0.8	0.4	0.1	0.1	9.8	2.7	331
M	56.0	5.7	16.6	5.4	8.2	3.1	3.2	1.8	0.0	0.0	16.0	6.1	165
<b>Age</b>													
18-29	70.1	2.6	6.8	1.1	4.2	0.9	3.5	1.2	0.3	0.2	14.9	2.3	886
30-44	65.9	2.6	10.1	1.5	6.2	1.0	2.0	0.7	1.0	0.4	14.9	2.4	760
45-59	50.6	3.5	14.3	2.0	12.7	1.7	6.9	1.2	4.2	1.5	11.5	2.6	456
60-69	37.2	4.0	27.5	4.3	13.5	3.3	10.2	2.9	3.7	1.6	7.9	2.7	158
70-79	36.1	7.3	21.9	5.6	23.4	6.2	5.9	3.1	1.7	1.7	10.9	4.9	71
80+	14.5	8.8	26.3	13.8	32.3	16.4	20.9	13.0	6.0	6.3	0.0	0.0	20
M	0.0	0.0	0.0	0.0	0.0	0.0	0.0	0.0	0.0	0.0	0.0	0.0	
All	61.3	2.2	11.3	1.1	8.0	0.8	4.3	0.8	1.6	0.4	13.5	2.1	2,351

## 6.15 Problem with 'sleeping' in last 30 days - q2080

	None	SE	Mild	SE	Moderate	SE	Sever	SE	Extreme/ Cannot do	SE	Missing	SE	N
<b>Gender</b>													
Male	60.6	2.2	18.8	1.6	12.4	1.4	5.6	0.9	2.1	0.5	0.5	0.2	1,129
Female	50.5	2.2	22.1	1.6	14.5	1.4	9.0	1.2	2.8	0.6	1.0	0.5	1,222
M	0.0	0.0	0.0	0.0	0.0	0.0	0.0	0.0	0.0	0.0	0.0	0.0	
<b>Residence</b>													
Urban	62.6	2.5	18.4	1.6	10.6	1.2	5.5	0.8	1.9	0.5	0.9	0.4	1,329
Rural	45.9	2.7	23.2	2.0	17.3	1.9	9.7	1.6	3.2	0.6	0.6	0.3	1,022
M	0.0	0.0	0.0	0.0	0.0	0.0	0.0	0.0	0.0	0.0	0.0	0.0	
<b>Income</b>													
Q1(poorest)	40.2	3.7	23.4	2.7	20.4	3.1	11.3	2.8	4.0	1.1	0.7	0.5	492
Q2	55.3	3.2	18.4	2.4	12.8	2.0	8.6	1.6	3.8	1.1	1.2	0.6	475
Q3	58.6	3.3	21.6	2.6	10.7	1.5	6.9	1.3	2.3	0.6	0.0	0.0	483
Q4	59.1	3.0	17.8	2.3	13.2	1.9	7.4	1.5	1.7	0.7	0.7	0.4	405
Q5(richest)	68.1	3.8	20.5	3.2	8.3	1.6	2.1	0.8	0.7	0.4	0.3	0.2	331
M	56.8	5.7	21.4	5.0	14.6	2.9	3.9	1.8	0.0	0.0	3.3	2.9	165
<b>Age</b>													
18-29	62.9	2.4	20.0	1.8	9.4	1.3	5.6	1.2	1.4	0.4	0.7	0.4	886
30-44	62.0	2.3	18.2	1.8	12.5	1.3	5.3	0.8	1.8	0.5	0.3	0.2	760
45-59	43.7	2.9	24.7	2.2	17.6	2.2	9.7	1.5	3.2	1.0	1.2	0.6	456
60-69	34.0	4.8	18.5	3.1	25.6	4.0	13.7	2.7	6.3	2.4	1.9	1.2	158
70-79	25.7	6.0	28.0	6.5	23.0	5.5	17.5	5.6	4.4	2.6	1.4	1.4	71
80+	10.1	5.0	26.3	18.4	11.0	6.3	25.7	16.6	26.9	12.6	0.0	0.0	20
M	0.0	0.0	0.0	0.0	0.0	0.0	0.0	0.0	0.0	0.0	0.0	0.0	
All	55.4	1.8	20.5	1.3	13.5	1.0	7.4	0.8	2.5	0.4	0.8	0.3	2,351

**6.16 Problem with 'feeling rested and refreshed' in last 30 days - q2081**

	None	SE	Mild	SE	Moderate	SE	Sever	SE	Extreme/ Cannot do	SE	Missing	SE	N
<b>Gender</b>													
Male	56.5	2.3	22.8	1.6	12.1	1.2	5.9	1.0	1.8	0.6	0.8	0.3	1,129
Female	46.6	2.2	25.4	1.5	16.8	1.5	7.8	1.1	2.4	0.5	1.0	0.5	1,222
M	0.0	0.0	0.0	0.0	0.0	0.0	0.0	0.0	0.0	0.0	0.0	0.0	
<b>Residence</b>													
Urban	58.3	2.6	22.6	1.6	11.5	1.3	5.2	0.8	1.5	0.6	1.0	0.4	1,329
Rural	42.4	2.6	26.2	1.8	18.6	2.0	9.0	1.6	3.0	0.6	0.8	0.4	1,022
M	0.0	0.0	0.0	0.0	0.0	0.0	0.0	0.0	0.0	0.0	0.0	0.0	
<b>Income</b>													
Q1(poorest)	39.2	3.5	26.6	2.5	20.5	3.3	9.7	2.0	3.5	1.1	0.5	0.3	492
Q2	51.4	3.3	22.0	2.2	13.6	1.9	7.4	1.6	4.3	1.3	1.2	0.6	475
Q3	53.3	3.0	24.9	2.6	12.4	1.9	7.5	1.7	1.5	0.6	0.4	0.3	483
Q4	53.6	3.0	25.0	2.5	13.3	1.8	6.4	1.4	0.9	0.5	0.9	0.5	405
Q5(richest)	62.9	3.5	24.9	2.3	8.5	2.1	2.9	0.9	0.2	0.2	0.5	0.4	331
M	53.2	5.4	17.2	3.1	21.2	4.5	4.1	1.9	0.6	0.6	3.8	2.9	165
<b>Age</b>													
18-29	59.3	2.5	22.7	1.7	11.0	1.5	5.5	1.2	0.9	0.4	0.7	0.4	886
30-44	54.1	2.6	23.9	1.8	14.1	1.6	5.7	1.0	1.3	0.4	0.8	0.3	760
45-59	42.1	3.0	26.5	2.3	19.4	2.5	7.1	1.3	3.5	1.2	1.3	0.7	456
60-69	33.1	4.6	24.2	3.8	20.9	3.2	15.5	3.3	4.9	2.5	1.3	1.0	158
70-79	29.4	6.1	34.8	7.7	22.5	5.4	11.0	5.0	0.9	0.9	1.4	1.4	71
80+	29.4	16.5	5.0	5.0	1.9	2.0	25.8	13.5	37.8	14.2	0.0	0.0	20
M	0.0	0.0	0.0	0.0	0.0	0.0	0.0	0.0	0.0	0.0	0.0	0.0	
All	51.4	1.8	24.1	1.2	14.6	1.1	6.9	0.8	2.1	0.4	0.9	0.3	2,351



## 6.17 Problem with 'feeling sad, low, or depressed' in last 30 days - q2090

	None	SE	Mild	SE	Moderate	SE	Sever	SE	Extreme/ Cannot do	SE	Missing	SE	N
<b>Gender</b>													
Male	55.3	2.5	21.2	1.6	14.9	1.5	5.6	0.9	1.9	0.5	1.0	0.4	1,129
Female	46.2	2.3	25.5	1.7	14.6	1.3	10.1	1.1	2.6	0.6	1.0	0.4	1,222
M	0.0	0.0	0.0	0.0	0.0	0.0	0.0	0.0	0.0	0.0	0.0	0.0	
<b>Residence</b>													
Urban	56.1	2.6	22.1	1.8	12.5	1.3	6.3	0.9	2.0	0.6	1.0	0.4	1,329
Rural	43.4	3.0	25.2	2.1	17.7	1.8	10.2	1.4	2.5	0.6	1.0	0.4	1,022
M	0.0	0.0	0.0	0.0	0.0	0.0	0.0	0.0	0.0	0.0	0.0	0.0	
<b>Income</b>													
Q1(poorest)	38.6	3.5	25.6	2.9	21.1	2.7	11.3	2.0	2.8	0.8	0.6	0.3	492
Q2	52.2	3.4	22.0	2.6	12.9	1.7	6.9	1.4	3.9	1.2	2.0	0.8	475
Q3	49.0	3.8	26.1	2.4	15.0	2.1	7.8	1.7	1.8	0.6	0.3	0.3	483
Q4	53.1	3.0	22.6	2.1	13.0	1.8	8.8	1.9	1.8	0.8	0.7	0.4	405
Q5(richest)	67.7	3.8	17.6	3.0	9.9	2.4	4.2	1.2	0.3	0.3	0.3	0.2	331
M	45.9	6.0	27.2	6.5	14.1	3.1	7.3	2.6	1.7	1.2	3.8	2.9	165
<b>Age</b>													
18-29	55.3	2.5	24.2	2.0	12.6	1.4	5.6	1.2	1.4	0.5	0.9	0.4	886
30-44	51.8	2.5	24.4	1.9	14.6	1.7	6.7	1.0	1.8	0.5	0.6	0.3	760
45-59	48.6	3.0	18.5	2.0	15.6	1.9	11.6	1.8	4.0	1.3	1.6	0.7	456
60-69	38.5	4.4	24.1	3.5	20.1	3.7	11.6	2.5	4.3	2.3	1.3	1.0	158
70-79	20.8	6.0	35.3	7.4	26.6	6.3	13.3	5.3	1.8	1.8	2.2	1.6	71
80+	40.3	16.9	17.5	12.1	11.0	6.3	31.2	17.4	0.0	0.0	0.0	0.0	20
M	0.0	0.0	0.0	0.0	0.0	0.0	0.0	0.0	0.0	0.0	0.0	0.0	
All	50.6	2.0	23.4	1.4	14.7	1.1	8.0	0.8	2.2	0.4	1.0	0.3	2,351

## 6.18 Problem with 'worry or anxiety' in last 30 days - q2091

	None	SE	Mild	SE	Moderate	SE	Sever	SE	Extreme/ Cannot do	SE	Missing	SE	N
<b>Gender</b>													
Male	52.7	2.7	21.2	1.6	14.3	1.5	7.8	1.2	2.8	0.7	1.2	0.4	1,129
Female	43.5	2.3	24.0	1.7	16.6	1.5	10.9	1.1	3.7	0.8	1.2	0.5	1,222
M	0.0	0.0	0.0	0.0	0.0	0.0	0.0	0.0	0.0	0.0	0.0	0.0	
<b>Residence</b>													
Urban	53.5	2.8	22.2	2.0	12.3	1.4	7.5	1.1	3.3	0.8	1.1	0.4	1,329
Rural	40.6	2.9	23.3	1.7	19.7	1.7	11.8	1.6	3.2	0.6	1.3	0.4	1,022
M	0.0	0.0	0.0	0.0	0.0	0.0	0.0	0.0	0.0	0.0	0.0	0.0	
<b>Income</b>													
Q1(poorest)	36.1	3.3	23.4	2.6	22.9	2.4	14.1	1.9	2.6	1.0	0.8	0.4	492
Q2	49.1	3.4	18.3	2.2	15.4	2.2	10.5	1.7	4.4	1.3	2.4	0.8	475
Q3	42.7	4.1	26.5	2.7	17.1	2.3	9.6	2.2	3.8	0.9	0.2	0.2	483
Q4	52.6	3.3	24.5	2.3	12.7	2.1	6.9	1.4	2.3	0.8	1.1	0.5	405
Q5(richest)	67.7	4.2	18.4	2.9	7.2	1.6	4.3	1.3	2.2	1.0	0.3	0.2	331
M	43.7	6.0	26.0	7.0	12.8	2.9	8.1	2.3	5.0	2.7	4.4	3.0	165
<b>Age</b>													
18-29	54.0	2.8	21.1	2.0	14.0	1.6	7.0	1.5	2.6	0.7	1.3	0.5	886
30-44	49.8	2.7	24.5	2.0	14.4	1.4	8.4	1.2	2.4	0.6	0.6	0.3	760
45-59	43.2	3.2	20.8	2.0	16.6	2.0	12.5	1.7	5.5	1.5	1.4	0.7	456
60-69	33.9	4.2	23.4	3.4	22.2	3.5	13.2	2.8	5.1	2.5	2.2	1.3	158
70-79	18.1	5.3	35.6	6.8	25.9	6.2	14.7	5.7	3.6	2.5	2.2	1.6	71
80+	32.3	16.4	17.5	12.1	12.9	6.4	37.3	18.5	0.0	0.0	0.0	0.0	20
M	0.0	0.0	0.0	0.0	0.0	0.0	0.0	0.0	0.0	0.0	0.0	0.0	
All	47.9	2.0	22.7	1.3	15.5	1.1	9.4	0.9	3.3	0.6	1.2	0.3	2,351

## 7.1 Self-reported utilization of health services and perceived unmet need

	<u>Ambulatory Adult</u>		<u>Ambulatory Child</u>		<u>Inpatient Adult</u>		<u>Inpatient Child</u>		<u>Informal Care</u>		<u>Unmet Care</u>		<u>Non use</u>	
	%	SE	%	SE	%	SE	%	SE	%	SE	%	SE	%	SE
<b>Sex</b>														
Female	19.6	2.0	11.7	1.2	5.0	0.8	1.6	0.4	0.7	0.3	1.5	0.4	59.9	2.6
Male	14.7	1.8	4.8	0.8	3.6	0.7	1.1	0.5	1.0	0.3	0.8	0.3	74.1	2.3
<b>Area of Residence</b>														
Urban	19.2	2.2	7.0	1.0	4.0	0.7	1.2	0.5	0.9	0.3	1.2	0.4	66.5	2.8
Rural	14.4	2.0	10.2	1.3	4.9	0.9	1.6	0.4	0.8	0.3	1.1	0.4	67.0	3.1
<b>Age Group</b>														
18-29y	14.0	1.8	7.3	1.1	3.5	0.8	0.9	0.3	0.6	0.3	0.7	0.3	73.0	2.4
30-44y	15.2	1.8	11.6	1.3	3.8	0.7	2.3	0.8	1.1	0.5	1.2	0.5	64.7	2.4
45-59y	20.9	3.7	7.2	1.4	5.6	1.4	0.9	0.4	0.7	0.4	1.0	0.5	63.6	3.9
60-69y	27.6	4.2	2.1	1.2	6.7	3.3	0.8	0.7	0.0	0.0	4.5	2.2	58.3	5.9
70+y	32.3	6.6	1.6	1.6	6.3	2.9	0.0	0.0	3.6	2.6	0.0	0.0	56.3	6.6
<b>Education Years</b>														
0	17.4	2.8	5.0	1.2	4.4	1.3	0.9	0.5	1.6	0.6	1.2	0.6	69.6	3.3
1-5	19.5	3.5	9.2	2.3	3.2	1.2	0.5	0.5	1.6	0.9	1.0	0.7	65.0	3.5
6-11	17.2	2.0	10.2	1.4	5.7	1.1	1.5	0.5	0.3	0.2	1.3	0.4	63.9	2.8
12+	16.7	2.4	8.3	1.2	3.5	0.8	1.7	0.7	0.8	0.3	1.1	0.4	68.0	2.9
<b>Income Quintiles</b>														
Q1	13.4	2.3	9.8	1.8	4.7	1.4	2.0	0.7	1.1	0.5	1.8	0.8	67.3	4.1
Q2	17.9	2.8	5.9	1.2	6.1	1.3	0.9	0.6	0.6	0.3	1.5	0.7	67.1	3.3
Q3	17.7	3.6	8.0	1.7	4.0	1.2	1.2	0.6	1.0	0.5	0.9	0.5	67.3	3.8
Q4	17.3	3.3	8.5	1.4	2.6	1.0	1.1	0.7	0.7	0.5	1.0	0.5	68.7	3.6
Q5	22.3	3.4	9.2	2.2	4.0	1.0	2.0	0.8	0.9	0.7	0.5	0.3	61.2	4.8
<b>Ownership</b>														
Government	28.3	2.8	14.3	1.6	10.8	1.6	3.2	1.1	0.8	0.4	2.7	0.8	39.9	3.1
Private	37.7	5.7	17.6	3.4	4.9	1.4	1.8	0.9	0.6	0.6	1.7	0.9	35.8	4.9
NGO	49.5	16.6	3.8	4.4	0.0	0.0	0.0	0.0	14.1	6.0	0.0	0.0	32.6	15.9
Other	58.3	13.6	13.3	11.1	5.5	3.0	0.0	0.0	0.0	0.0	0.0	0.0	22.9	10.4
TOTAL	17.3	1.5	8.4	0.8	4.3	0.6	1.4	0.3	0.8	0.2	1.2	0.3	66.7	2.1

This table presents the percent of people reporting utilization of health services when they last needed care. It combines information from Q7000, Q7001 and Q7016. Utilization was recorded in the WHS in three separate categories: ambulatory care, hospital inpatient care, and informal care. Time cut-offs for utilization recall used here are 1 year for ambulatory care and informal care, and 3 years for hospital inpatient care. Utilization of ambulatory and inpatient care services

have been further sub-divided into "adult" and "child" categories. In addition to utilization, two other related aspects are being reported here - unmet need and non-use (regardless of expressed need) of health services. Unmet need was estimated on the basis of responses to Q7000 and Q7004. Non-use of health services is simply the percent of respondents who reported no need in Q7000 or did not utilize services in the time cut-offs mentioned above.

Results are reported for the total WHS sample (category: "TOTAL"), and by the following sample sub-groups: sex, area of residence, age group, years of education, income quintiles, and ownership (of health facility). Mean values and standard errors (SE) are reported for each category.

Sub-groups common to other tables were constructed in the same manner. Common sub-groups include sex (Q1001), area of residence (Q0104), age group (regrouping of reported age in Q1002), years of education (Q1010) and income quintiles. To determine income and subsequently income quintiles, an asset index was constructed for each household using responses to section 0700 on "Permanent Income Indicators" from the WHS household questionnaire.

Ownership was constructed uniquely for the responsiveness section's tables. There are four categories of ownership: "Operated by the government" (Government), "Privately operated" (Private), "NGO" and "Other". To construct the ownership sub-group, information was combined from (a) Q7204, Q7205 and Q7301 for those utilizing ambulatory services, and (b) Q7200, Q7201 and Q7401 for those utilizing hospital inpatient services.

## 7.2 Patient assessed characteristics of ambulatory health services

	Patients visiting a medical doctor, of those visiting any health care provider		Patients rating characteristics of health care provider as adequate/more than adequate						Mean time taken to reach health facility (in minutes)		Patients using private car or motorcycle to reach facility		Mean cost for an ambulatory care visit (local currency)		Percent of population perceiving discrimination	
	%	SE	%	SE	%	SE	%	SE	Minutes	SE	%	SE	mean cost	SE	%	SE
<b>Sex</b>																
Female	53.0	4.8	94.3	1.9	91.7	2.2	81.5	5.7	33.0	4.5	25.0	5.7	74.8	9.2	13.7	3.0
Male	57.3	5.1	92.7	2.2	92.8	2.3	86.5	3.8	23.1	3.0	34.8	6.0	85.8	11.7	17.0	2.9
<b>Area of Residence</b>																
Urban	67.8	4.4	94.1	1.8	93.9	1.8	81.0	6.2	22.8	2.3	37.9	6.4	91.8	11.4	13.4	3.0
Rural	33.8	5.8	92.9	2.2	89.4	3.3	87.4	2.6	39.4	6.7	14.3	4.2	60.5	9.6	17.6	4.0
<b>Age Group</b>																
18-29y	56.3	5.8	91.8	2.5	90.8	2.8	81.4	5.0	24.2	3.1	22.2	5.4	71.1	15.0	14.8	3.4
30-44y	57.8	4.7	93.4	2.4	92.0	2.5	88.4	3.7	29.8	4.0	34.3	5.8	85.6	13.6	13.6	2.8
45-59y	55.5	9.2	96.7	1.9	94.1	2.6	72.9	13.0	35.0	9.1	31.4	12.4	85.5	15.1	16.6	4.9
60-69y	35.7	9.7	88.4	6.0	87.2	5.9	91.7	5.1	23.2	3.4	22.9	8.1	73.3	23.0	20.0	7.2
70+y	49.2	16.6	100.0	0.0	100.0	0.0	94.3	4.6	31.8	13.0	20.9	10.6	56.3	13.7	10.9	7.7
<b>Education Years</b>																
0	43.1	6.9	90.8	3.4	86.7	3.9	82.5	5.3	28.7	6.7	16.8	6.3	61.2	15.1	15.8	4.8
1-5	50.4	10.3	100.0	0.0	90.2	4.7	89.6	4.1	39.8	11.3	12.5	4.5	51.6	9.5	12.0	6.5
6-11	43.1	5.4	91.3	3.1	93.3	2.5	87.6	3.7	28.2	3.7	11.0	3.2	69.3	13.5	22.1	3.6
12+	71.9	5.2	95.4	1.6	94.6	1.9	78.7	8.8	26.8	4.0	54.6	7.2	103.1	13.5	9.4	3.1
<b>Income Quintiles</b>																
Q1	27.0	6.3	90.8	3.9	88.7	3.8	89.3	3.6	39.9	8.1	1.3	1.4	42.4	9.9	18.0	6.4
Q2	41.3	6.6	93.7	2.9	86.7	4.8	84.2	4.5	39.6	7.0	4.9	2.6	70.3	15.1	22.6	5.6
Q3	66.0	8.8	92.6	3.6	93.7	3.3	65.5	12.6	24.7	4.9	36.3	12.8	94.8	18.5	15.0	4.9
Q4	57.3	5.2	93.2	2.8	93.4	2.8	86.5	5.3	24.7	3.6	14.3	3.7	73.1	10.8	10.7	3.8
Q5	81.7	4.8	98.6	1.4	96.6	2.7	91.5	6.1	17.1	3.3	83.9	5.0	125.4	25.6	7.8	3.0
<b>Condition</b>																
Child-Visit	48.1	7.6	92.3	3.3	90.9	4.6	83.3	5.8	28.3	6.0	31.3	7.4	92.4	0.5	16.5	5.5
Preventive	34.7	13.3	91.9	7.2	91.9	7.2	74.3	12.3	28.2	6.4	0.0	0.0	33.4	0.5	16.0	8.7
Childbirth	100.0	0.0	100.0	0.0	100.0	0.0	100.0	0.0	15.5	0.5	100.0	0.0	957.5	0.5	100.0	0.0
Acute	61.4	5.9	94.2	2.5	93.6	2.6	85.9	6.0	22.1	3.4	28.2	6.5	73.3	0.5	12.9	4.6
Injury	41.7	12.2	100.0	0.0	91.8	5.8	96.3	2.9	47.3	22.7	34.0	12.1	110.7	0.5	10.4	6.8
Chronic	42.6	13.2	89.4	7.0	92.9	5.0	90.0	6.3	32.5	6.7	20.1	7.9	57.1	0.5	9.4	6.2

	Patients visiting a medical doctor, of those visiting any health care provider		Patients rating characteristics of health care provider as adequate/more than adequate						Mean time taken to reach health facility (in minutes)		Patients using private car or motorcycle to reach facility		Mean cost for an ambulatory care visit (local currency)		Percent of population perceiving discrimination	
	%	SE	%	SE	%	SE	%	SE	Minutes	SE	%	SE	mean cost	SE	%	SE
Other	57.8	7.3	95.1	2.0	90.4	3.6	72.0	10.3	34.7	5.8	33.3	10.0	89.5	0.5	11.4	3.3
<b>Ownership</b>																
Government	38.0	4.4	90.9	2.1	90.1	2.2	83.2	3.6	33.7	4.3	11.2	2.4	49.1	0.5	20.3	3.4
Private	84.1	4.0	97.8	1.3	95.7	1.7	82.4	9.5	20.9	3.0	58.4	7.3	133.1	0.5	6.4	2.3
NGO	31.7	22.3	100.0	0.0	79.4	13.8	79.4	13.8	25.9	6.4	26.5	19.4	63.7	0.5	18.0	17.2
Other	52.1	18.4	93.9	6.9	93.9	6.9	93.9	6.9	37.0	6.4	17.9	15.6	87.1	0.5	10.6	3.6
<b>Self-Assessed Health</b>																
Very-Good	63.7	5.2	95.1	2.4	94.6	2.5	90.1	3.3	22.8	3.2	40.9	7.6	103.3	18.8	6.7	2.9
Good	57.7	6.8	94.8	1.8	94.0	2.2	78.4	9.2	26.1	3.6	38.1	8.5	81.3	12.2	14.7	3.7
Moderate	53.9	5.9	93.2	2.5	92.7	2.3	81.6	5.3	29.9	4.7	12.4	3.5	70.7	14.5	19.9	4.4
Bad	22.8	7.9	90.9	5.3	83.0	8.3	93.0	5.0	46.3	16.0	15.2	6.1	49.1	11.0	16.7	7.1
Very-Bad	28.5	14.9	71.1	18.2	57.6	16.1	66.6	19.4	97.7	43.4	0.0	0.0	24.9	6.6	53.8	16.7
TOTAL	54.7	3.9	93.6	1.4	92.1	1.7	83.4	4.0	29.0	3.2	28.8	4.5	79.0	8.1	15.0	2.4

This table looks at various characteristics of a visit to an ambulatory care facility, for those who utilized such services in the previous 12 months (Q7204 and Q7205). Characteristics of a visit reported here include:

- (1) The percent of patients visiting a medical doctor (of those visiting any ambulatory provider) (Q7302).
- (2) Patients' rating of *skills*, *equipment*, and *drug supplies* of the provider as "adequate": percent of patients who reported "Yes" to questions Q7304, Q7305 and Q7306, respectively.
- (3) Barriers or facilitators to care access have been reported here for those who utilized ambulatory care services in the last 12 months. They include:
  - (a) *Mean time taken to reach facility*: patient reported times from Q7307 were used to calculate averages across sample sub-groups.
  - (b) *Patients using private motor vehicles*: percent of patients who reported using a "private car or motorcycle" to get to the facility in Q7308.
  - (c) *Mean cost of visit*: patient reported costs in Q7309-Q7313 were summed up for an individual and then averaged across sample sub-groups.
  - (d) *Perceived discrimination*: percent of patients who reported "Yes" to any form of discrimination listed in Q7328-Q7334.

Results are reported for the total WHS sample (category: "TOTAL"), and by the following sample sub-groups: sex, area of residence, age group, years of education, income quintiles, reason for seeking care (condition), ownership (of health facility), and self-assessed health. Mean values and standard errors (SE) are reported for each category.

Sub-groups common to other tables were constructed in the same manner. Common sub-groups include: sex (Q1001), area of residence (Q0104), age group (regrouping of reported age in Q1002), years of education (Q1010) and income quintiles. To determine income and subsequently income quintiles, an asset index was constructed for each household using responses to section 0700 on "Permanent Income Indicators" from the WHS household questionnaire.

Ownership, condition and self-assessed health sub-groups were constructed uniquely for the responsiveness section's tables. There are four categories of ownership: "Operated by the government" (Government), "Privately operated" (Private), "NGO" and "Other". To construct the ownership sub-group, information was combined from (a) Q7204, Q7205 and Q7301 for those utilizing ambulatory services, and (b) Q7200, Q7201 and Q7401 for those utilizing hospital inpatient services. The sub-group "Condition" used and regrouped information from Q7003 ("Which reason best describes why you [your child] last needed health care?") into 6 categories. The six categories include preventive care (immunization, antenatal consultation and family planning); childbirth; acute conditions (high fever, severe diarrhoea, or cough); injury; chronic conditions (arthritis, asthma and heart disease); and other (dental care, minor surgery and other). Self-assessed health was constructed using information from Q2000 ("In general, how would you rate your health today as?") in the WHS. Respondents could select one of the

following five categories: "Very good", "Good", "Moderate", "Bad" and "Very bad".

### 7.3.1 Patient assessment of responsiveness domains for ambulatory services: percent reporting "Moderate", "Bad" or "Very bad" - 1

	Prompt Attention		Wait Time		Talked Respectfully		Dignity		Privacy		Communication	
	Travel Time											
	%	SE	%	SE	%	SE	%	SE	%	SE	%	SE
<b>Sex</b>												
Female	38.5	4.6	56.4	5.2	32.7	4.3	27.3	4.3	27.6	3.8	37.6	4.5
Male	33.9	4.7	42.1	5.1	28.2	4.4	23.3	4.0	25.9	4.2	34.3	5.0
<b>Area of Residence</b>												
Urban	33.5	5.0	48.3	6.2	27.8	4.7	19.9	4.2	26.0	4.8	33.3	5.3
Rural	41.9	5.2	55.0	5.9	35.9	5.1	35.1	5.8	28.4	3.8	41.1	4.9
<b>Age Group</b>												
18-29y	39.3	5.8	45.4	6.2	34.8	5.9	29.3	5.4	22.4	4.6	37.2	5.5
30-44y	34.9	5.1	42.4	5.1	28.1	4.5	20.0	3.4	27.9	4.8	36.4	5.1
45-59y	39.7	8.8	59.8	8.7	30.6	7.0	30.5	7.3	30.0	6.6	35.6	7.8
60-69y	29.2	9.3	72.4	9.5	37.1	10.4	25.0	8.7	22.7	8.3	30.7	9.4
70+y	33.2	13.2	70.3	14.0	22.2	13.8	26.8	13.7	38.1	16.9	43.9	16.7
<b>Education Years</b>												
0	40.8	6.4	57.1	8.4	39.8	6.5	27.1	6.9	30.9	6.3	42.9	6.5
1-5	46.2	6.7	61.2	9.2	30.6	8.4	34.8	9.8	39.8	8.9	48.0	8.6
6-11	40.5	5.3	51.2	5.0	32.6	5.2	33.0	5.0	30.1	4.4	43.0	5.1
12+	28.9	5.7	44.6	7.5	24.9	5.2	16.4	3.7	18.6	4.4	23.8	5.1
<b>Income Quintiles</b>												
Q1	54.1	6.9	64.3	6.9	39.5	7.1	42.9	8.4	29.6	5.0	48.6	5.9
Q2	46.0	7.1	59.2	6.8	37.0	6.5	39.2	6.6	33.7	4.3	48.4	5.9
Q3	31.7	8.5	58.8	10.3	34.1	8.7	27.9	8.6	29.5	8.1	36.7	9.2
Q4	37.3	6.9	49.4	8.1	26.3	5.5	15.1	4.7	27.0	6.6	30.3	6.4
Q5	18.0	6.5	24.1	7.3	18.0	7.1	6.1	2.4	14.2	6.5	18.5	6.4
<b>Condition</b>												
Child-Visit	31.6	5.8	43.3	7.9	23.8	6.2	30.7	6.2	32.1	6.5	44.6	7.4
Preventive	33.4	13.1	48.2	12.2	31.6	14.0	16.1	10.7	49.3	14.4	39.4	13.4
Childbirth	0.0	0.0	0.0	0.0	0.0	0.0	0.0	0.0	0.0	0.0	0.0	0.0
Acute	39.3	6.6	46.6	6.3	35.5	6.6	30.3	6.1	33.3	6.6	43.5	6.9
Injury	39.3	13.0	27.6	10.5	6.1	5.2	10.4	6.6	16.0	8.8	30.6	11.4
Chronic	44.4	13.1	68.5	9.8	34.2	11.4	28.8	11.0	39.5	12.0	34.3	12.1
Other	36.6	7.0	55.9	7.9	24.4	5.8	15.4	3.9	26.9	5.9	32.6	6.4
<b>Ownership</b>												
Government	48.1	4.0	65.7	4.3	44.0	4.1	38.4	4.8	39.4	4.3	50.3	4.3
Private	19.5	4.2	31.7	8.5	12.5	3.8	7.3	2.6	6.2	2.2	13.0	3.5
NGO	77.3	20.0	0.0	0.0	26.5	19.4	9.1	9.5	18.0	17.2	0.0	0.0
Other	16.7	6.8	18.1	5.9	7.5	3.3	10.6	3.6	28.5	8.5	46.6	12.9
<b>Self-Assessed Health</b>												
Very-Good	24.0	4.7	27.9	5.6	16.7	4.4	16.0	4.5	13.6	3.4	23.7	4.9
Good	27.2	5.4	51.5	6.9	32.4	5.8	23.8	5.2	24.9	4.8	30.3	5.7
Moderate	47.9	6.0	60.0	5.9	41.8	5.4	33.9	4.9	35.3	5.8	50.4	6.0
Bad	63.9	11.8	77.3	8.5	25.5	9.3	32.2	9.6	40.5	9.2	47.6	9.5
Very-Bad	100.0	0.0	100.0	0.0	69.2	15.2	44.5	20.9	58.0	16.3	58.0	16.3
TOTAL	36.7	3.7	50.9	4.4	31.0	3.5	25.8	3.5	26.9	3.3	36.3	3.7



The following table reports the percent of people perceiving poor responsiveness in ambulatory care facilities, where "poor" is defined as a rating of "Moderate", "Bad" or "Very bad" in Q7315-Q7327 which have 5 response options (including "Good" and "Very good"). Ratings for each of the seven domains of ambulatory care responsiveness (including 13 questions) by patients have been presented here. There are two questions each for six of the seven domains; the domain choice has only one question. The following questions from the survey have been used to determine patient assessment of each responsiveness domain:

- (1) *Prompt attention*: travel time (Q7315) and wait time (Q7316).
- (2) *Dignity*: talked respectfully (Q7317) and privacy (Q7318).
- (3) *Communication*: clear explanation (Q7319) and time for questions (Q7320).
- (4) *Autonomy*: treatment information (Q7321) and involvement (Q7322).
- (5) *Confidentiality*: talk privately (Q7323) and confidentiality of records (Q7324).
- (6) *Choice of health care provider*: Q7325.
- (7) *Basic amenities*: cleanliness (Q7326) and space (Q7327).

Results are reported for the total WHS sample (category: "TOTAL"), and by the following sample sub-groups: sex, area of residence, age group, years of education, income quintiles, reason for visit, ownership (of health facility), and self-assessed health. Mean values and standard errors (SE) are reported for each category.

Sub-groups common to other tables were constructed in the same manner. Common sub-groups include sex (Q1001), area of residence (Q0104), age group (regrouping of reported age in Q1002), years of education (Q1010) and income quintiles. To determine income and subsequently income quintiles, an asset index was constructed for each household using responses to section 0700 on "Permanent Income Indicators" from the WHS household questionnaire.

Ownership, condition and self-assessed health sub-groups were constructed uniquely for the responsiveness section's tables. There are four categories of ownership: "Operated by the government" (Government), "Privately operated" (Private), "NGO" and "Other". To construct the ownership sub-group, information was combined from (a) Q7204, Q7205 and Q7301 for those utilizing ambulatory services, and (b) Q7200, Q7201 and Q7401 for those utilizing hospital inpatient services. The sub-group "Condition" used and regrouped information from Q7003 ("Which reason best describes why you [your child] last needed health care?") into 6 categories. The six categories include preventive care (immunization, antenatal consultation and family planning); childbirth; acute conditions (high fever, severe diarrhoea, or cough); injury; chronic conditions (arthritis, asthma and heart disease); and other (dental care, minor surgery and other). Self-assessed health was constructed using information from Q2000 ("In general, how would you rate your health today as?") in the WHS. Respondents were asked to select one of the following five categories: "Very good", "Good", "Moderate", "Bad" and "Very bad".

### 7.3.2 Patient assessment of responsiveness domains for ambulatory services: percent reporting "Moderate", "Bad" or "Very bad" - 2

	Autonomy				Confidentiality				Choice of Healthcare Provider		Basic Amenities			
	Treatment Information		Involvement		Talk Privately		Confidentiality of Records		%	SE	Cleanliness	SE	Space	
	%	SE	%	SE	%	SE	%	SE					%	SE
<b>Sex</b>														
Female	42.5	5.0	43.3	5.3	31.4	4.5	19.9	3.5	47.0	5.5	24.9	4.2	35.9	4.4
Male	39.6	5.0	45.2	5.6	30.8	5.0	19.2	4.3	42.9	5.4	21.8	4.3	30.0	5.1
<b>Area of Residence</b>														
Urban	38.5	6.2	38.0	6.2	27.9	5.6	17.4	3.8	39.2	6.2	21.8	4.4	32.4	4.7
Rural	46.0	4.3	53.6	5.5	36.3	4.7	23.0	4.4	55.1	5.6	26.8	5.2	35.6	5.5
<b>Age Group</b>														
18-29y	38.2	6.1	45.6	5.6	28.3	4.9	16.6	3.7	44.9	6.3	26.7	5.2	35.0	5.1
30-44y	41.9	4.9	42.7	4.9	32.7	4.9	22.9	4.4	38.2	5.2	19.2	3.8	29.1	4.5
45-59y	38.5	8.7	40.2	9.0	25.5	6.6	13.2	4.8	51.2	9.9	18.6	5.5	30.4	7.1
60-69y	48.1	11.5	48.0	11.6	49.6	11.8	31.7	10.1	59.2	11.7	45.1	9.6	60.2	10.7
70+y	59.3	15.2	56.9	15.8	32.5	13.1	20.0	9.1	51.1	12.8	32.1	14.7	32.4	14.4
<b>Education Years</b>														
0	54.9	8.3	50.4	8.4	42.2	8.8	24.3	6.3	60.6	8.1	27.1	7.0	45.6	6.9
1-5	47.9	7.2	61.0	10.1	34.7	10.7	15.4	5.4	58.1	8.3	32.8	8.5	52.3	7.7
6-11	48.7	5.2	51.7	5.0	34.3	4.8	25.7	4.5	52.7	5.9	27.3	5.4	34.4	4.8
12+	26.1	5.4	29.3	5.8	21.6	4.5	13.1	3.6	27.6	5.1	16.5	3.8	21.8	4.3
<b>Income Quintiles</b>														
Q1	47.8	6.3	57.3	7.8	39.2	7.5	26.1	6.3	53.2	8.0	27.8	7.7	41.2	7.1
Q2	55.3	5.3	55.6	6.2	43.5	6.1	36.0	7.3	63.6	5.7	28.0	7.4	42.8	8.1
Q3	41.6	9.6	40.8	9.4	29.7	7.6	19.2	5.8	48.5	10.8	27.0	8.2	35.8	9.1
Q4	40.4	9.3	47.1	9.5	27.3	9.4	11.2	4.2	44.1	9.5	23.9	6.0	34.3	5.8
Q5	23.3	7.0	17.5	6.7	15.6	6.5	5.5	2.2	17.7	6.5	9.8	3.8	14.7	4.4
<b>Condition</b>														
Child-Visit	46.4	7.8	42.8	6.5	31.6	6.4	28.5	6.8	36.7	7.7	19.0	7.8	35.1	8.0
Preventive	39.4	13.4	39.4	13.4	22.7	12.3	22.6	10.9	45.3	16.0	33.5	11.7	22.6	10.9
Childbirth	0.0	0.0	0.0	0.0	0.0	0.0	0.0	0.0	0.0	0.0	0.0	0.0	0.0	0.0
Acute	45.4	6.8	44.8	6.8	39.2	7.0	26.1	5.8	44.3	7.0	25.0	5.8	33.5	6.6
Injury	32.7	12.0	39.8	12.1	26.0	11.2	9.4	5.4	32.7	11.6	7.4	5.8	18.9	9.8
Chronic	42.5	14.0	52.2	13.4	53.5	14.2	23.8	9.4	69.5	11.5	24.4	12.3	50.5	14.6
Other	44.8	7.6	45.8	8.0	22.8	6.1	10.8	3.5	44.5	7.8	17.1	4.7	27.0	5.9
<b>Ownership</b>														
Government	56.4	4.8	56.5	4.8	43.7	4.9	29.1	4.0	61.6	4.6	34.5	4.8	47.7	4.1
Private	15.3	3.7	21.5	5.0	12.9	3.8	7.5	2.4	19.0	4.7	8.7	2.8	13.4	3.6
NGO	9.1	9.5	50.3	26.1	27.1	19.6	0.0	0.0	9.3	9.9	9.1	9.5	29.7	13.9
Other	59.4	13.8	56.3	14.9	12.8	5.2	3.4	3.8	55.4	21.7	3.1	3.6	3.1	3.6
<b>Self-Assessed Health</b>														
Very-Good	26.0	4.9	28.5	5.7	13.1	3.9	9.4	3.7	34.7	6.1	14.5	3.8	21.2	4.4
Good	32.8	5.6	37.6	6.4	32.9	5.8	22.2	4.7	39.4	6.3	21.2	4.4	30.8	5.5
Moderate	59.2	5.5	55.0	5.6	38.7	4.8	25.0	4.6	53.5	6.2	32.1	6.0	42.5	5.2
Bad	60.2	9.1	74.6	8.2	50.6	11.2	22.7	9.2	65.7	9.8	32.7	8.7	51.9	10.8
Very-Bad	58.0	16.3	71.5	18.1	44.5	20.9	28.0	17.9	87.6	12.0	31.6	19.2	44.5	20.9
TOTAL	41.4	4.1	44.0	4.4	31.2	3.9	19.6	2.9	45.4	4.4	23.7	3.4	33.7	3.6

The following table reports the percent of people perceiving poor responsiveness in ambulatory care facilities, where "poor" is defined as a rating of "Moderate", "Bad" or "Very bad" in Q7315-Q7327 which have 5 response options (including "Good" and "Very good"). Ratings for each of the seven domains of ambulatory care responsiveness (including 13 questions) by patients have been presented here. There are two questions each for six of the seven domains; the domain choice has only one question. The following questions from the survey have been used to determine patient assessment of each responsiveness domain:

- (1) *Prompt attention*: travel time (Q7315) and wait time (Q7316).
- (2) *Dignity*: talked respectfully (Q7317) and privacy (Q7318).
- (3) *Communication*: clear explanation (Q7319) and time for questions (Q7320).
- (4) *Autonomy*: treatment information (Q7321) and involvement (Q7322).
- (5) *Confidentiality*: talk privately (Q7323) and confidentiality of records (Q7324).
- (6) *Choice of health care provider*: Q7325.
- (7) *Basic amenities*: cleanliness (Q7326) and space (Q7327).

Results are reported for the total WHS sample (category: "TOTAL"), and by the following sample sub-groups: sex, area of residence, age group, years of education, income quintiles, reason for visit, ownership (of health facility), and self-assessed health. Mean values and standard errors (SE) are reported for each category.

Sub-groups common to other tables were constructed in the same manner. Common sub-groups include sex (Q1001), area of residence (Q0104), age group (regrouping of reported age in Q1002), years of education (Q1010) and income quintiles. To determine income and subsequently income quintiles, an asset index was constructed for each household using responses to section 0700 on "Permanent Income Indicators" from the WHS household questionnaire.

Ownership, condition and self-assessed health sub-groups were constructed uniquely for the responsiveness section's tables. There are four categories of ownership: "Operated by the government" (Government), "Privately operated" (Private), "NGO" and "Other". To construct the ownership sub-group, information was combined from (a) Q7204, Q7205 and Q7301 for those utilizing ambulatory services, and (b) Q7200, Q7201 and Q7401 for those utilizing hospital inpatient services. The sub-group "Condition" used and regrouped information from Q7003 ("Which reason best describes why you [your child] last needed health care?") into 6 categories. The six categories include preventive care (immunization, antenatal consultation and family planning); childbirth; acute conditions (high fever, severe diarrhoea, or cough); injury; chronic conditions (arthritis, asthma and heart disease); and other (dental care, minor surgery and other). Self-assessed health was constructed using information from Q2000 ("In general, how would you rate your health today as?") in the WHS. Respondents were asked to select one of the following five categories: "Very good", "Good", "Moderate", "Bad" and "Very bad".

## 7.4 Patient assessed characteristics of hospital inpatient health services

	Patients staying for more than 6 days on last hospital visit		Patients rating characteristics of health care provider as adequate / more than adequate				Mean time taken to reach health facility (in minutes)		Patients using private car or motorcycle to reach facility		Patients waiting more than a month to be admitted		Mean number of patients sleeping in the same room		Mean cost for a hospital visit		Percent of population perceiving discrimination			
	%	SE	%	SE	%	SE	%	SE	Minutes	SE	%	SE	%	SE	No	SE	mean cost	SE	%	SE
Sex																				
Female	31.6	5.3	94.1	1.7	91.5	1.9	92.3	2.0	38.7	3.6	40.7	5.4	0.5	0.4	6.3	1.2	472.4	169.8	19.0	3.9
Male	25.3	3.5	94.5	2.1	95.0	1.9	93.9	2.1	36.8	4.7	31.8	4.7	1.5	1.0	6.4	1.2	414.3	125.0	8.5	3.3
Area of Residence																				
Urban	36.0	6.2	93.4	1.9	91.4	2.2	94.3	1.5	35.0	4.2	55.4	6.5	0.1	0.1	5.4	1.1	624.4	224.0	12.9	3.1
Rural	21.9	3.4	95.3	1.8	94.2	1.9	91.2	3.0	41.4	4.6	16.8	3.2	1.8	0.9	7.7	1.4	284.9	130.9	18.7	5.9
Age Group																				
18-29y	19.6	3.6	95.6	1.9	92.0	2.9	90.2	3.0	39.1	4.7	32.2	4.6	0.0	0.0	5.8	1.2	608.2	274.4	19.5	5.1
30-44y	26.1	4.0	90.2	2.7	90.2	2.8	93.4	2.2	38.8	4.8	39.4	5.6	0.1	0.1	6.4	1.2	426.9	125.5	15.3	3.9
45-59y	47.9	10.7	97.5	1.6	94.5	2.6	95.0	3.3	34.5	5.4	37.6	12.0	0.0	0.0	6.3	2.0	110.2	33.0	10.2	5.0
60-69y	35.4	12.7	96.9	3.1	100.0	0.0	100.0	0.0	34.0	6.9	54.9	11.4	10.7	5.6	7.6	1.4	837.5	644.5	18.0	13.1
70+y	22.5	12.0	100.0	0.0	100.0	0.0	78.9	14.1	53.4	19.7	30.8	14.0	0.0	0.0	8.0	2.9	1,425.6	1,031.1	6.5	6.4
Education Years																				
0	27.9	4.9	90.0	4.3	89.2	4.3	92.7	3.3	36.2	6.0	24.6	7.4	1.4	1.4	8.6	1.6	238.2	95.8	16.0	5.5
1-5	33.0	10.1	100.0	0.0	96.4	3.5	92.2	7.6	43.5	12.4	19.7	8.5	3.2	3.2	5.9	1.2	111.4	33.0	22.7	10.4
6-11	28.3	5.0	93.9	2.3	92.1	2.6	94.0	2.1	39.2	3.6	31.5	4.6	0.8	0.8	6.7	1.2	165.9	57.2	18.3	4.9
12+	30.6	7.7	95.1	1.8	93.8	2.1	92.2	2.6	36.4	5.1	52.8	6.7	0.1	0.1	5.2	1.3	835.9	274.6	11.4	3.0
Income Quintiles																				
Q1	28.3	4.9	92.7	3.6	92.0	3.5	90.7	4.8	41.8	5.7	10.3	3.5	3.4	1.7	8.8	2.1	124.6	28.0	19.6	8.3
Q2	19.5	5.5	96.2	2.2	90.2	3.7	89.5	4.0	41.1	6.3	24.1	4.4	0.0	0.0	7.7	1.5	87.9	21.6	15.5	5.1
Q3	50.3	12.5	99.4	0.6	98.0	1.6	96.5	2.1	43.8	8.3	46.5	12.9	0.0	0.0	5.9	1.9	579.2	324.3	24.1	8.9
Q4	25.7	6.5	88.8	4.8	84.8	5.3	92.0	3.3	29.0	4.3	49.2	7.4	0.0	0.0	5.4	1.2	909.1	531.9	8.5	4.0
Q5	21.7	4.5	94.1	3.2	96.5	2.8	96.7	2.2	33.1	6.7	79.1	5.2	0.3	0.3	4.2	1.2	1,041.0	239.3	8.1	3.5
Condition																				
Child-Visit	26.9	8.1	93.7	4.5	90.9	5.4	96.4	3.5	39.3	7.0	29.2	10.7	0.0	0.0	6.5	2.0	107.0	40.7	14.3	5.8
Fever	21.0	6.8	90.2	4.5	87.3	4.8	93.0	3.6	28.3	3.5	30.4	7.2	0.0	0.0	7.7	2.1	178.8	85.1	7.7	3.6
Childbirth	9.2	3.0	95.5	2.7	95.5	2.7	87.8	4.7	42.4	4.5	39.9	6.5	0.0	0.0	7.0	1.1	566.7	348.2	24.1	5.6
Arthritis	62.1	14.4	100.0	0.0	91.5	8.2	100.0	0.0	38.6	8.2	54.7	14.8	0.0	0.0	6.2	1.5	823.0	406.4	10.0	9.5
Asthma	42.8	13.8	95.7	4.3	95.7	4.3	94.0	5.0	35.7	8.5	62.9	14.4	0.0	0.0	3.7	1.5	427.3	265.6	20.9	11.6
Heart-Disease	40.4	17.3	100.0	0.0	100.0	0.0	100.0	0.0	42.4	16.8	25.2	12.8	0.0	0.0	6.1	1.4	657.0	538.0	5.3	5.4
Injury	35.4	6.1	96.3	2.7	92.0	3.9	92.8	3.8	39.9	8.1	17.9	5.1	2.1	2.1	5.1	1.3	506.3	244.1	26.7	8.3
Minor-Surgery	51.2	18.1	93.9	4.1	96.9	3.3	100.0	0.0	38.2	12.3	62.7	14.6	2.8	2.5	2.9	1.1	776.3	457.7	6.1	4.2
Other	32.2	5.6	93.2	2.6	91.2	3.0	92.2	2.4	38.6	5.9	36.8	5.5	0.8	0.8	7.8	1.6	293.0	163.7	11.7	4.6
Ownership																				
Government	27.2	3.0	92.4	1.7	90.3	1.8	90.9	2.0	40.7	3.8	27.3	3.3	1.1	0.6	7.3	1.1	171.0	53.2	16.1	3.5
Private	39.4	12.4	100.0	0.0	100.0	0.0	98.4	1.3	28.8	4.7	77.1	6.6	0.2	0.2	3.3	1.1	1,586.3	630.4	6.7	3.2
NGO	16.7	0.0	100.0	0.0	100.0	0.0	100.0	0.0	26.3	0.5	0.0	0.0	0.0	0.0	3.1	0.5	128.5	0.5	100.0	0.0
Other	50.6	33.0	100.0	0.0	100.0	0.0	100.0	0.0	44.6	10.7	7.4	8.4	0.0	0.0	35.8	6.3	120.5	0.5	0.0	0.0
Self-Assessed Health																				
Very-Good	24.4	5.6	90.2	3.6	90.2	3.7	90.6	3.6	40.5	6.0	53.4	6.4	0.0	0.0	5.2	1.0	472.1	217.5	16.1	5.8
Good	29.6	8.9	98.6	1.4	97.4	1.7	97.5	1.8	32.5	4.0	46.2	8.2	0.1	0.1	4.5	1.1	691.9	247.0	18.6	5.8
Moderate	30.5	5.4	95.7	2.8	91.5	3.4	92.7	2.8	41.1	6.4	20.1	4.1	2.0	1.4	8.1	1.7	226.2	90.2	9.0	3.2
Bad	35.2	8.4	82.2	6.4	81.5	6.6	79.4	6.5	39.5	5.2	26.9	6.7	3.1	3.1	10.0	2.8	147.9	50.2	18.0	6.7
Very-Bad	48.1	15.5	100.0	0.0	100.0	0.0	100.0	0.0	43.7	12.9	6.0	5.8	0.0	0.0	11.6	2.4	91.3	32.9	23.8	12.7
TOTAL	29.6	3.8	94.3	1.3	92.7	1.5	92.9	1.6	38.0	3.3	37.7	4.3	0.8	0.4	6.3	1.0	453.5	130.5	15.5	3.2

This table looks at various characteristics of a visit to a hospital inpatient care facility, for those who utilized such services in the past 3 years (Q7200, Q7201 and Q7402). Characteristics of a visit reported here include:

(1) The percent of patients who stayed 6 days or more at an inpatient facility during their last visit (Q7404).

(2) Patients' rating of *skills, equipment, and drug supplies* of the provider as "adequate": percent of patients who reported "Yes" to questions Q7405, Q7406 and Q7407, respectively.

(3) Barriers or facilitators to care access have been reported here for those who utilized inpatient care services in the last 3 years. They include:

(a) *Mean time taken to reach facility*: patient reported times from Q7408 were used to calculate averages across sample sub-groups.

(b) *Patients using private motor vehicles*: percent of patients who reported using a "private car or motorcycle" to get to the facility in Q7409.

(c) *Patients waiting more than a month to be admitted*: percent of patients who reported waiting more than a month to be admitted in Q7410.

(d) *Mean number of patients sleeping in same room*: averages across sample sub-groups have been constructed for numbers reported in Q7417.

(c) *Mean cost of visit*: patient reported costs in Q7411-Q7415 were summed up for an individual and then averaged across sample sub-groups.

(d) *Perceived discrimination*: percent of patients who reported "Yes" to any form of discrimination asked in Q7433-Q7439.

Results are reported for the total WHS sample (category: "TOTAL"), and by the following sample sub-groups: sex, area of residence, age group, years of education, income quintiles, reason for seeking care (condition), ownership (of health facility), and self-assessed health. Mean values and standard errors (SE) are reported for each category.

Sub-groups common to other tables were constructed in the same manner. Common sub-groups include sex (Q1001), area of residence (Q0104), age group (regrouping of reported age in Q1002), years of education (Q1010) and income quintiles. To determine income and subsequently income quintiles, an asset index was constructed for each household using responses to section 0700 on "Permanent Income Indicators" from the WHS household questionnaire.

Ownership, condition and self-assessed health sub-groups were constructed uniquely for the responsiveness section's tables. There are four categories of ownership: "Operated by the government" (Government), "Privately operated" (Private), "NGO" and "Other". To construct the ownership sub-group, information was combined from (a) Q7204, Q7205 and Q7301 for those utilizing ambulatory services, and (b) Q7200, Q7201 and Q7401 for those utilizing hospital inpatient services. The sub-group "Condition" used information from Q7403 ("Which of the following best describes the reason for your [child's] last overnight stay?"). The eight categories of Q7403 include high fever, diarrhoea, or cough; childbirth; arthritis; asthma; heart disease; bodily injury; minor surgery; and other. Self-assessed health was constructed using information from Q2000 ("In general, how would you rate your health today as?") in the WHS. Respondents were asked to select one of the following five categories: "Very good", "Good", "Moderate", "Bad" and "Very bad".

## 7.5.1 Patient assessment of responsiveness domains for hospital inpatient services: percent reporting "Moderate", "Bad" or "Very bad" - 1

	Prompt Attention				Dignity				Communication				Autonomy			
	Travel Time		Wait Time		Talked Respectfully		Privacy		Clear Explanation		Time for Questions		Treatment Information		Involvement	
	%	SE	%	SE	%	SE	%	SE	%	SE	%	SE	%	SE	%	SE
<b>Sex</b>																
Female	29.8	4.4	34.2	4.7	34.4	4.7	20.6	3.5	27.6	4.4	37.5	5.1	41.7	4.9	44.3	5.1
Male	38.2	5.0	35.4	5.6	27.2	5.2	24.0	4.6	25.0	4.6	37.9	5.5	33.9	5.4	37.2	6.1
<b>Area of Residence</b>																
Urban	28.5	4.8	28.1	4.4	29.9	5.4	16.7	3.7	22.3	4.4	29.9	5.0	33.2	5.4	33.1	5.8
Rural	37.4	5.0	42.3	6.4	34.4	5.9	27.8	4.3	32.1	5.3	47.0	6.7	46.0	5.6	52.5	5.8
<b>Age Group</b>																
18-29y	29.4	4.3	44.6	5.4	30.2	4.7	22.7	4.2	26.5	5.0	39.8	5.9	34.6	5.4	41.4	5.9
30-44y	31.8	5.1	27.1	4.7	30.8	5.1	17.6	3.4	28.3	5.1	37.3	5.0	42.1	5.5	44.4	5.7
45-59y	34.0	8.0	34.5	8.6	31.5	8.5	21.2	5.5	22.9	7.4	37.9	8.8	37.5	7.8	36.1	8.1
60-69y	36.1	12.8	27.2	9.6	43.7	12.5	35.0	10.3	34.1	10.7	30.3	10.0	45.5	12.1	54.9	12.0
70+y	66.6	16.4	45.7	18.2	44.4	17.7	37.9	17.7	16.9	15.1	33.7	17.2	50.6	16.6	23.3	15.8
<b>Education Years</b>																
0	42.4	7.7	42.9	8.1	41.9	7.8	25.5	5.8	41.6	7.2	46.8	7.2	49.7	7.9	49.6	8.0
1-5	37.6	8.5	64.2	8.5	39.1	11.8	14.9	7.0	11.3	6.0	33.8	11.2	31.2	9.3	34.1	10.5
6-11	41.5	5.5	36.3	5.1	36.9	5.4	29.4	4.7	32.2	5.3	46.7	5.7	46.5	5.5	55.4	5.2
12+	19.7	4.4	23.0	5.1	22.0	4.8	15.2	3.6	19.2	4.1	26.9	5.5	29.9	6.1	29.1	5.7
<b>Income Quintiles</b>																
Q1	47.7	6.7	51.6	7.4	41.3	7.4	39.8	5.0	42.8	6.2	54.1	7.0	54.9	6.0	55.1	7.1
Q2	43.7	6.0	40.3	6.5	33.6	6.5	19.8	4.8	27.0	7.2	44.5	8.2	43.8	8.0	44.5	8.7
Q3	27.6	8.7	25.1	8.2	39.4	10.7	11.9	4.6	23.3	7.0	34.0	9.7	37.1	9.7	48.9	11.6
Q4	33.0	6.4	35.6	6.1	38.4	7.9	29.8	7.8	28.9	7.8	41.9	7.4	41.4	7.7	49.2	8.7
Q5	9.1	4.2	12.6	4.7	6.1	2.9	8.0	3.8	9.9	4.2	11.4	4.3	16.3	5.5	8.6	3.3
<b>Condition</b>																
Child-Visit	39.7	9.0	34.3	8.1	37.8	9.5	23.5	7.4	38.5	9.7	47.3	9.5	50.2	10.7	49.1	8.8
Fever	39.1	7.2	33.0	8.2	22.4	6.9	10.7	4.2	16.0	5.6	32.4	7.2	32.9	6.5	35.0	8.3
Childbirth	33.2	6.0	35.2	6.3	38.9	6.4	28.0	5.6	41.9	6.4	48.8	7.3	53.0	7.1	55.9	6.9
Arthritis	40.1	14.8	25.9	12.4	16.7	11.0	3.8	3.9	22.7	12.6	8.9	8.4	9.5	9.0	20.7	11.5
Asthma	20.2	12.4	38.9	15.6	43.0	15.5	43.0	15.5	25.9	14.0	52.8	16.1	36.3	15.0	43.0	15.5
Heart-Disease	21.0	12.2	19.9	13.1	19.8	14.0	24.8	15.4	14.5	13.3	20.0	14.0	26.1	14.7	30.2	16.0
Injury	27.3	6.8	42.4	8.8	35.3	7.9	19.5	6.0	22.2	6.2	38.7	8.4	33.7	7.2	39.6	7.6
Minor-Surgery	19.7	8.8	23.4	9.7	21.1	9.4	22.8	10.1	19.4	8.7	20.0	8.9	25.9	11.0	24.6	10.2
Other	38.6	6.3	37.4	5.6	36.2	5.7	23.6	4.3	28.3	5.0	41.9	5.4	45.4	6.0	46.6	5.7
<b>Ownership</b>																
Government	39.7	3.8	41.7	4.2	38.8	4.4	27.8	3.4	33.6	4.2	44.1	4.7	47.1	4.3	49.8	4.8
Private	8.7	3.6	4.8	2.4	5.0	2.7	2.9	1.8	5.8	2.7	10.4	3.8	15.9	5.7	10.4	4.3
NGO	16.7	0.0	100.0	0.0	83.3	0.0	0.0	0.0	16.7	0.0	83.3	0.0	16.7	0.0	83.3	0.0
Other	92.6	8.4	42.0	32.5	0.0	0.0	42.0	32.5	0.0	0.0	42.0	32.5	0.0	0.0	0.0	0.0
<b>Self-Assessed Health</b>																
Very-Good	27.8	5.8	21.8	4.2	27.7	6.0	17.3	3.7	23.4	4.8	31.5	5.2	35.5	6.3	39.9	6.7
Good	25.6	5.1	32.0	6.9	31.4	6.8	16.4	4.0	16.8	3.8	29.9	6.2	35.0	6.5	37.5	6.8
Moderate	36.2	6.5	37.9	6.8	30.2	6.1	25.6	5.5	34.1	7.4	46.4	7.7	41.8	5.9	45.9	5.8
Bad	43.6	9.4	53.8	7.7	34.1	8.6	37.6	9.3	42.1	9.5	50.3	9.4	47.9	9.9	49.7	9.6
Very-Bad	82.3	11.3	70.4	12.9	68.2	14.4	38.3	14.6	51.0	15.9	58.0	15.8	55.5	15.1	46.4	15.0
TOTAL	32.5	3.6	34.6	4.0	32.0	4.0	21.7	2.9	26.7	3.5	37.6	4.2	39.1	4.0	41.9	4.3

The following table reports the percent of people perceiving poor responsiveness in hospital inpatient care facilities, where "poor" is defined as a rating of "Moderate", "Bad" or "Very bad" in questions Q7418-Q7432 which have 5 response options (including "good" and "very good".. Ratings for each of the eight domains of hospital inpatient care responsiveness (including 15 questions) by patients have been presented here. There are two questions each for seven of the eight domains; the domain of choice has only one question. The following questions from the survey have been used to determine patient assessment of each responsiveness domain:

- (1) *Prompt attention*: travel time (Q7418) and wait time (Q7419).
- (2) *Dignity*: talked respectfully (Q7420) and privacy (Q7421).
- (3) *Communication*: clear explanation (Q7422) and time for questions (Q7423).
- (4) *Autonomy*: treatment information (Q7424) and involvement (Q7425).
- (5) *Confidentiality*: talk privately (Q7426) and confidentiality of records (Q7427).
- (6) *Choice of health care provider*: Q7428.
- (7) *Basic amenities*: cleanliness (Q7429) and space (Q7430).
- (8) *Social support*: family visit (Q7431) and external contact (Q7432).

Results are reported for the total WHS sample (category: "TOTAL"), and by the following sample sub-groups: sex, area of residence, age group, years of education, income quintiles, reason for visit, ownership (of health facility), and self-assessed health. Mean values and standard errors (SE) are reported for each category.

Sub-groups common to other tables were constructed in the same manner. Common sub-groups include sex (Q1001), area of residence (Q0104), age group (regrouping of reported age in Q1002), years of education (Q1010) and income quintiles. To determine income and subsequently income quintiles, an asset index was constructed for each household using responses to section 0700 on "Permanent Income Indicators" from the WHS household questionnaire.

Ownership, condition and self-assessed health sub-groups were constructed uniquely for the responsiveness section's tables. There are four categories of ownership: "Operated by the government" (Government), "Privately operated" (Private), "NGO" and "Other". To construct the ownership sub-group, information was combined from (a) Q7204, Q7205 and Q7301 for those utilizing ambulatory services, and (b) Q7200, Q7201 and Q7401 for those utilizing hospital inpatient services. The sub-group "Condition" used information from Q7403 ("Which of the following best describes the reason for your [child's] last overnight stay?"). The eight categories of Q7403 include high fever, diarrhoea, or cough; childbirth; arthritis; asthma; heart disease; bodily injury; minor surgery; and other. Self-assessed health was constructed using information from Q2000 ("In general, how would you rate your health today as?") in the WHS. Respondents were asked to select one of the following five categories: "Very good", "Good", "Moderate", "Bad" and "Very bad".

## 7.5.2 Patient assessment of responsiveness domains for hospital inpatient services: percent reporting "Moderate", "Bad" or "Very bad" - 2

	Confidentiality				Choice of health care provider		Basic Amenities				Social Support			
	Talk Privately	Confidentiality of records					Cleanliness	Space			Family Visit	External Contact		
	%	SE	%	SE	%	SE	%	SE	%	SE	%	SE	%	SE
<b>Sex</b>														
Female	32.3	4.4	28.7	4.7	57.9	5.1	28.7	4.0	34.7	4.6	29.3	4.5	39.3	4.8
Male	29.7	4.8	21.5	4.9	38.3	5.9	23.7	5.2	32.5	6.0	29.5	4.8	35.6	6.2
<b>Area of Residence</b>														
Urban	27.1	4.6	19.0	4.1	45.1	7.0	23.2	4.2	29.6	4.8	22.3	4.3	32.5	5.2
Rural	36.6	4.9	35.1	6.1	58.6	4.6	31.7	6.2	39.3	6.9	37.8	6.0	44.8	6.0
<b>Age Group</b>														
18-29y	29.0	5.5	27.2	5.8	46.9	5.7	23.6	4.0	32.6	5.4	26.6	5.7	36.8	5.2
30-44y	29.3	4.7	24.3	4.6	45.3	5.7	24.9	4.2	27.9	4.6	29.6	5.2	39.9	5.4
45-59y	33.7	8.0	27.2	8.0	64.9	7.9	31.8	9.5	42.9	10.0	29.3	7.8	36.5	9.2
60-69y	43.1	12.6	22.9	9.4	59.7	10.4	30.7	10.3	33.9	10.5	34.9	12.6	42.8	12.6
70+y	42.0	17.0	48.3	16.9	41.8	18.1	56.6	16.1	69.2	14.0	48.3	16.9	25.1	15.8
<b>Education Years</b>														
0	38.6	7.1	33.4	7.5	52.1	7.9	32.1	7.2	43.4	8.2	33.4	7.2	37.9	7.8
1-5	25.0	7.5	27.8	10.8	45.2	10.8	20.0	8.3	49.3	11.1	41.5	11.8	56.9	10.5
6-11	42.8	5.2	30.5	5.5	58.9	5.0	30.9	4.6	33.0	5.5	32.3	6.0	43.6	5.7
12+	20.5	4.8	19.6	5.4	45.9	7.7	23.3	5.8	27.3	5.3	22.3	4.9	29.4	5.8
<b>Income Quintiles</b>														
Q1	42.7	5.8	42.1	7.8	59.8	4.8	37.9	8.2	47.0	9.1	35.1	7.9	51.2	8.4
Q2	37.7	7.6	28.1	6.2	59.3	8.4	33.2	6.3	34.2	7.6	37.5	6.7	42.3	6.4
Q3	33.2	9.1	26.8	8.8	68.8	9.2	17.3	5.6	33.6	9.5	34.1	10.3	38.3	10.9
Q4	33.0	7.8	24.1	7.8	56.5	7.4	39.0	6.8	44.4	7.0	27.9	6.8	44.4	7.9
Q5	10.1	4.2	7.0	3.0	15.6	5.3	10.2	4.1	10.9	4.0	13.1	4.5	14.9	5.4
<b>Condition</b>														
Child-Visit	43.0	10.0	28.8	9.4	59.5	10.5	28.0	7.9	35.2	8.8	30.4	8.5	49.2	11.4
Fever	33.4	7.4	25.0	8.6	43.4	9.8	22.6	7.4	29.5	7.8	20.8	6.6	38.4	7.9
Childbirth	37.7	6.3	40.3	6.7	56.8	6.5	36.0	6.4	39.2	6.5	40.9	7.2	49.7	7.4
Arthritis	9.6	9.0	18.9	12.1	32.8	14.0	8.7	8.4	29.3	13.3	25.5	13.0	39.4	14.8
Asthma	37.5	15.1	39.6	16.6	31.3	13.7	23.7	12.1	42.2	15.8	31.1	14.2	36.7	14.8
Heart-Disease	20.0	14.0	20.0	14.0	49.1	17.8	37.5	19.1	14.5	13.3	0.0	0.0	5.5	5.5
Injury	32.1	6.4	33.0	8.5	41.9	8.6	33.1	8.1	41.4	9.0	30.7	8.4	37.0	8.7
Minor-Surgery	20.1	8.9	7.0	4.6	64.4	14.1	20.7	9.0	19.2	8.6	13.5	7.4	20.6	9.5
Other	33.4	5.8	21.8	4.9	54.7	4.6	24.1	4.8	35.9	5.8	33.4	5.8	39.2	5.2
<b>Ownership</b>														
Government	38.4	3.9	33.7	4.6	57.9	4.4	34.3	4.4	42.1	4.8	35.5	4.2	46.6	4.3
Private	12.3	5.3	3.0	2.2	27.0	14.3	2.6	2.1	1.6	1.2	1.6	1.4	5.2	2.5
NGO	0.0	0.0	16.7	0.0	83.3	0.0	33.3	0.0	83.3	0.0	100.0	0.0	83.3	0.0
Other	0.0	0.0	0.0	0.0	50.6	33.0	42.0	32.5	49.4	33.0	50.6	33.0	0.0	0.0
<b>Self-Assessed Health</b>														
Very-Good	29.4	5.8	19.8	5.0	40.5	6.7	22.7	4.3	23.3	4.5	22.2	5.5	40.1	6.2
Good	27.4	5.5	24.4	6.0	54.8	7.6	17.2	5.2	30.3	6.5	27.1	6.7	33.0	6.6
Moderate	31.1	5.9	27.1	6.0	51.2	4.8	36.4	8.2	37.6	8.1	31.1	5.8	40.9	6.2
Bad	37.7	9.0	37.3	9.2	62.7	8.2	38.1	10.4	59.5	10.0	46.1	10.4	39.7	8.4
Very-Bad	66.8	13.6	58.0	15.8	57.8	16.1	62.2	14.8	46.7	15.3	48.0	15.2	54.4	15.7
TOTAL	31.5	3.5	26.3	3.8	51.3	4.4	27.1	3.7	34.0	4.2	29.3	3.8	38.1	4.1



The following table reports the percent of people perceiving poor responsiveness in hospital inpatient care facilities, where "poor" is defined as a rating of "Moderate", "Bad" or "Very bad" in questions Q7418-Q7432 which have 5 response options (including "good" and "very good".. Ratings for each of the eight domains of hospital inpatient care responsiveness (including 15 questions) by patients have been presented here. There are two questions each for seven of the eight domains; the domain of choice has only one question. The following questions from the survey have been used to determine patient assessment of each responsiveness domain:

- (1) *Prompt attention*: travel time (Q7418) and wait time (Q7419).
- (2) *Dignity*: talked respectfully (Q7420) and privacy (Q7421).
- (3) *Communication*: clear explanation (Q7422) and time for questions (Q7423).
- (4) *Autonomy*: treatment information (Q7424) and involvement (Q7425).
- (5) *Confidentiality*: talk privately (Q7426) and confidentiality of records (Q7427).
- (6) *Choice of health care provider*: Q7428.
- (7) *Basic amenities*: cleanliness (Q7429) and space (Q7430).
- (8) *Social support*: family visit (Q7431) and external contact (Q7432).

Results are reported for the total WHS sample (category: "TOTAL"), and by the following sample sub-groups: sex, area of residence, age group, years of education, income quintiles, reason for visit, ownership (of health facility), and self-assessed health. Mean values and standard errors (SE) are reported for each category.

Sub-groups common to other tables were constructed in the same manner. Common sub-groups include sex (Q1001), area of residence (Q0104), age group (regrouping of reported age in Q1002), years of education (Q1010) and income quintiles. To determine income and subsequently income quintiles, an asset index was constructed for each household using responses to section 0700 on "Permanent Income Indicators" from the WHS household questionnaire.

Ownership, condition and self-assessed health sub-groups were constructed uniquely for the responsiveness section's tables. There are four categories of ownership: "Operated by the government" (Government), "Privately operated" (Private), "NGO" and "Other". To construct the ownership sub-group, information was combined from (a) Q7204, Q7205 and Q7301 for those utilizing ambulatory services, and (b) Q7200, Q7201 and Q7401 for those utilizing hospital inpatient services. The sub-group "Condition" used information from Q7403 ("Which of the following best describes the reason for your [child's] last overnight stay?"). The eight categories of Q7403 include high fever, diarrhoea, or cough; childbirth; arthritis; asthma; heart disease; bodily injury; minor surgery; and other. Self-assessed health was constructed using information from Q2000 ("In general, how would you rate your health today as?") in the WHS. Respondents were asked to select one of the following five categories: "Very good", "Good", "Moderate", "Bad" and "Very bad".

## 7.6 Importance of different domains of responsiveness: percent reporting "Extremely Important"

	Prompt Attention		Dignity		Communication		Autonomy		Confidentiality		Choice		Basic Amenities		Social Support	
	%	SE	%	SE	%	SE	%	SE	%	SE	%	SE	%	SE	%	SE
<b>Sex</b>																
Female	37.0	2.5	45.5	2.8	46.5	2.7	42.3	2.6	46.8	2.7	36.2	2.6	43.9	2.8	35.5	2.5
Male	35.9	3.0	41.8	3.0	43.9	2.8	36.1	2.7	43.4	3.0	33.0	2.5	39.4	2.4	36.5	2.6
<b>Area of Residence</b>																
Urban	37.8	3.0	44.9	3.2	47.9	3.1	43.9	2.9	49.2	3.0	37.7	2.8	41.5	2.9	38.6	2.8
Rural	34.6	3.6	41.9	3.9	41.4	3.8	32.8	3.6	39.3	4.0	30.3	3.4	42.1	3.9	32.1	3.6
<b>Age Group</b>																
18-29y	37.0	3.4	46.8	3.2	47.4	3.1	41.1	2.9	48.5	3.2	34.5	2.6	44.7	2.9	37.2	2.8
30-44y	37.5	2.7	42.7	2.9	45.5	2.8	42.9	2.7	44.8	2.8	36.5	2.6	41.6	2.6	36.5	2.6
45-59y	32.0	3.5	38.6	3.9	41.3	4.1	32.7	3.9	41.6	3.8	32.3	3.9	36.4	3.6	32.8	3.5
60-69y	44.1	6.0	48.6	5.9	49.8	5.1	35.9	5.4	42.9	5.6	36.4	5.5	47.6	6.1	37.6	4.8
70+y	35.6	6.1	46.3	6.8	34.7	7.1	30.2	6.4	40.8	6.9	29.9	6.6	35.2	6.6	34.0	6.1
<b>Education Years</b>																
0	33.1	3.8	40.1	4.2	41.0	4.1	36.3	3.9	41.2	4.2	32.6	3.9	39.1	4.0	32.9	3.8
1-5	36.0	3.8	38.0	4.2	40.0	3.9	33.6	4.0	41.2	4.1	32.3	3.9	41.9	4.1	31.8	3.8
6-11	35.9	3.0	40.9	3.0	43.0	3.2	35.7	2.9	41.3	3.0	31.0	2.6	39.7	3.0	35.3	3.1
12+	38.7	3.1	49.2	3.1	50.3	3.1	45.1	2.8	51.2	3.0	39.2	2.7	44.7	2.9	39.0	2.8
<b>Income Quintiles</b>																
Q1	34.6	4.3	41.3	4.5	38.4	4.4	32.9	4.4	38.4	4.9	31.5	4.0	41.0	4.6	31.8	4.1
Q2	35.5	3.6	39.3	4.2	42.0	3.9	34.7	3.8	40.8	3.9	31.0	3.5	36.3	3.9	33.2	3.7
Q3	37.5	4.2	45.8	4.2	49.9	3.9	41.6	3.8	47.9	4.0	35.3	3.8	42.5	3.3	34.7	3.0
Q4	33.9	3.9	41.5	3.6	43.8	4.0	36.6	3.8	42.9	4.1	30.7	3.4	35.8	3.8	34.3	3.8
Q5	43.4	4.2	55.3	4.7	55.0	4.8	53.9	4.4	61.0	4.2	46.3	4.4	53.7	5.0	47.3	4.4
<b>Ownership</b>																
Government	40.3	3.3	44.2	3.5	44.7	3.3	37.1	3.2	45.2	3.6	34.6	3.3	43.4	3.6	37.0	3.0
Private	44.6	5.2	57.0	4.7	62.7	4.9	56.0	5.1	60.9	5.1	53.7	5.2	54.4	5.5	44.4	5.1
NGO	9.3	9.3	76.1	16.9	76.1	16.9	80.2	15.2	9.3	9.3	9.3	9.3	14.3	12.9	13.2	10.8
Other	35.5	12.5	23.6	11.1	66.7	10.4	50.9	8.1	50.9	8.1	43.9	10.0	39.9	17.9	35.5	12.5
<b>Self-Assessed Health</b>																
Very-Good	41.7	3.3	51.0	3.3	49.4	3.4	44.3	3.0	51.1	3.3	37.6	2.9	45.8	3.2	39.7	3.0
Good	30.9	2.7	40.2	3.1	42.6	3.0	38.9	2.9	42.7	2.9	33.3	2.7	35.4	2.6	32.3	2.7
Moderate	35.8	3.4	36.9	3.3	42.4	3.4	30.1	3.0	37.7	3.6	30.7	3.3	44.1	3.5	35.2	3.3
Bad	44.7	6.0	44.2	5.6	46.7	5.9	43.9	6.0	49.0	5.4	39.3	6.1	49.2	6.2	37.6	5.7
Very-Bad	32.9	9.4	46.7	9.7	40.2	9.4	38.3	9.2	51.2	9.6	34.5	8.9	40.9	9.0	41.4	9.6
<b>Type of Care</b>																
Ambulatory-Adult	40.3	4.2	49.0	4.5	57.9	4.0	48.4	4.0	54.1	4.4	42.7	4.5	44.8	4.4	40.8	3.8
Ambulatory-Child	51.6	4.5	42.3	5.4	51.4	5.0	49.2	4.6	49.9	5.0	45.3	4.7	51.4	4.6	41.9	5.0
Inpatient-Adult	36.9	5.6	41.0	6.4	40.0	6.6	32.5	5.3	34.6	5.7	33.8	5.2	35.1	6.2	41.8	6.8
Inpatient-Child	33.1	10.7	60.2	11.0	53.6	8.9	40.8	11.6	55.0	9.0	41.9	11.8	50.6	8.9	31.9	10.4
Non-Users	33.9	2.7	42.3	2.7	41.7	2.6	36.8	2.5	43.3	2.7	31.6	2.4	39.6	2.4	33.1	2.4
TOTAL	36.5	2.3	43.7	2.5	45.2	2.4	39.3	2.3	45.2	2.4	34.7	2.2	41.7	2.4	36.0	2.2

This table shows the percent of people who rated a responsiveness domain as "Extremely Important". All survey respondents were queried on their perception of the importance of each of the eight responsiveness domains in section 7100 of the WHS where each domain was described in detail (Q7100-Q7107). Respondents were asked to say whether the domain was "Extremely Important", "Very Important", "Moderately Important", "Slightly Important" or "Not

Important".

Results are reported for the total WHS sample (category: "TOTAL"), and by the following sample sub-groups: sex, area of residence, age group, years of education, income quintiles, ownership (of health facility), self-assessed health, and type of care. Mean values and standard errors (SE) are reported for each category.

Sub-groups common to other tables were constructed in the same manner. Common sub-groups include sex (Q1001), area of residence (Q0104), age group (regrouping of reported age in Q1002), years of education (Q1010) and income quintiles. To determine income and subsequently income quintiles, an asset index was constructed for each household using responses to section 0700 on "Permanent Income Indicators" from the WHS household questionnaire.

Ownership, self-assessed health and type of care sub-groups were constructed uniquely for the responsiveness section's tables. There are four categories of ownership: "Operated by the government" (Government), "Privately operated" (Private), "NGO" and "Other". To construct the ownership sub-group, information was combined from (a) Q7204, Q7205 and Q7301 for those utilizing ambulatory services, and (b) Q7200, Q7201 and Q7401 for those utilizing hospital inpatient services. Self-assessed health was constructed using information from Q2000 ("In general, how would you rate your health today as?") in the WHS. Respondents were asked to select one of the following five categories: "Very good", "Good", "Moderate", "Bad" and "Very bad". Type of care is a constructed sample sub-group combining information from Q7000, Q7001 and Q7016. There are five categories of type of care: "Ambulatory adult", "Ambulatory child", "Inpatient adult", "Inpatient child" and "Non users".

---

## 8.0 Expenditure Background Indicators (2002)

---

GDP per capita (\$)	2,376
Total health expenditure per capita (\$)	206
Total population (000)	44,759
Life expectancy at birth (Both sexes)	50.7
Life expectancy at birth (male)	48.8
Life expectancy at birth (female)	52.6
Healthy life expectancy at birth (Both sexes)	44.3
Healthy life expectancy at birth (Male)	43.3
Healthy life expectancy at birth (Female)	45.3
Government funded health expenditure as a percentage of total health expenditure	40.6
Social security funded health expenditure as a percentage of total health expenditure	1.5
Private health insurance premiums as a percentage of total health expenditure	46.2
Out-of-pocket payment as a percentage of total health expenditure	12.4

## 8.1 Distribution of health payments across different population groups

	Mean Household expenditure (EXP) in local currency	% Poor	% Impoverished	% Catastrophic	OOP % EXP	OOP % non-subsistence spending	Mean OOP in local currency
<b>Catastrophic</b>							
No	2,116	48.3	0.3		2.4	3.8	67
Yes	1,726	57.6	17.4		53.0	71.4	942
<b>Poor</b>							
No	3,627		4.1	8.7	6.6	9.4	287
Yes	479		0.0	12.1	8.6	12.2	26
<b>Insurance</b>							
No	1,798	51.5	2.1	10.5	7.5	10.6	160
Yes	3,295	39.7	2.2	10.0	8.3	11.5	148
<b>Residence</b>							
rural	1,568	58.7	3.2	12.4	8.4	12.4	188
urban	2,423	42.9	1.3	9.0	7.1	9.7	138
<b>Income_Quintile</b>							
1st(poorest)	236	100.0	0.0	17.2	13.8	16.7	7
2nd	582	100.0	0.0	8.5	4.2	8.4	29
3rd	933	46.1	7.5	10.7	6.7	11.2	73
4th	1,727	0.0	2.9	7.8	6.0	9.0	108
5th(richest)	6,932	0.0	0.1	7.6	7.2	8.5	576
total	2,076	49.3	2.1	10.4	7.6	10.8	158

OOP: Out of pocket

*Household consumption expenditure (EXP)* comprises both monetary and in-kind payment on all goods and services and the money value of the consumption of home-made products.

*Poor* - a household is considered poor when its total household expenditure is smaller than its subsistence spending  
*Impoverishment* - a non-poor household is impoverished by health payment when it becomes poor after paying for health services.

*Catastrophic health expenditure* occurs when a household's total out-of-pocket health payments equals or exceeds 40% of the households capacity to pay or non-subsistence spending.

*Out of pocket health payments (OOP)* refer to payments made by households at the point they receive health services. It includes doctor's consultation fees, purchases of medication and hospital bills. Spending on alternative and/or traditional medicine is included. Expenditure on health related transportation and special nutrition is excluded. Insurance reimbursements are also excluded.

*Subsistence spending* - household subsistence spending is the minimum requirement to maintain a basic life in a society. A poverty line is used in the analysis as subsistence spending.

*Food expenditure* is the amount spent on all foodstuffs by the household plus the value of the family's own food production consumed within the household. It excludes expenditure on alcoholic beverages, tobacco and food consumption outside the home (e.g hotel and restaurants).

*Household capacity to pay* - is defined as a household's non-subsistence spending.

---

## 8.2 Percent distribution of structure of out-of-pocket health payments

---

	Inpatient	Outpatient	Traditional	Drugs	Other	Total
<b>Catastrophic</b>						
No	9.7	23.9	5.3	35.2	25.9	100
Yes	34.2	25.1	8.3	5.5	26.9	100
<b>Poor</b>						
No	25.4	24.1	6.2	16.5	27.8	100
Yes	18.9	30.0	17.5	21.2	12.3	100
<b>Insurance</b>						
No	26.3	26.3	7.1	15.6	24.7	100
Yes	18.0	16.8	7.2	22.8	35.2	100
<b>Residence</b>						
rural	28.0	33.4	10.0	11.9	16.7	100
urban	21.9	16.5	4.5	21.5	35.6	100
<b>Income_Quintile</b>						
1st(poorest)	15.7	19.8	19.6	29.1	15.8	100
2nd	21.2	30.2	17.9	19.4	11.3	100
3rd	18.2	27.3	25.5	15.1	13.9	100
4th	15.5	22.1	22.1	18.3	22.0	100
5th(richest)	27.8	24.5	1.3	16.5	29.9	100
total	24.9	24.6	7.2	16.9	26.5	100

---

### 8.3 Financial sources used by households for paying for health services

	Savings	Sold Items	Borrow from relatives &	Borrow from others	Health insurance	Current Income	Other
<b>OOP%non_subsistence_spending</b>							
less than 10%	14.0	6.6	10.4	10.5	7.6	32.4	4.6
10-20%	29.4	6.3	16.0	13.7	11.8	32.3	3.3
20-40%	15.7	5.7	7.5	10.9	4.5	30.0	8.7
above 40%	17.9	5.6	7.5	8.8	6.3	30.5	2.9
<b>Hospitalization</b>							
No	15.2	5.7	8.9	9.1	6.7	30.2	3.5
Yes	17.9	11.9	19.6	20.7	13.7	44.8	11.9
<b>Insurance</b>							
No	14.3	5.9	10.8	11.9	2.0	32.2	4.5
Yes	21.0	9.0	7.8	4.5	31.8	31.2	4.9
<b>Residence</b>							
rural	15.8	7.2	16.0	18.3	6.2	38.8	5.5
urban	15.4	6.0	6.3	5.3	8.5	27.4	4.0
<b>Income_Quintile</b>							
1st(poorest)	9.8	4.1	10.8	12.1	4.8	34.7	5.2
2nd	13.4	5.0	10.5	13.3	5.3	36.4	3.1
3rd	14.7	5.0	7.4	6.7	8.5	30.6	4.9
4th	21.0	4.5	9.7	9.2	5.5	26.0	3.6
5th(richest)	19.1	13.7	12.8	11.5	13.7	32.5	6.1
total	15.6	6.5	10.2	10.6	7.5	32.0	4.6

---

## 8.4 Insurance Coverage

---

	Insured	SE	Mandatory Insurance	SE	Voluntary Insurance	SE	Insured as dependent	SE	Mandatory and Voluntary	SE
Q1(poorest)	3.8	1.6	0.7	0.6	5.4	2.5	0.9	0.8	2.3	1.7
Q2	8.0	2.0	7.6	3.7	11.2	3.7	4.2	1.7	26.7	15.8
Q3	11.0	2.7	9.5	2.8	8.9	3.8	8.8	3.5	1.4	1.1
Q4	21.5	2.7	25.3	4.3	15.8	2.8	22.8	3.0	13.4	5.3
Q5(richest)	55.7	5.1	56.9	7.0	58.7	6.2	63.3	5.3	56.1	13.8
Total	100		100		100		100		100	
Number	1,483.0		544.0		650.0		828.0		94.0	



## 10.1 Inability to control the important things in life - q8000

	Never	SE	Almost never	SE	Sometimes	SE	Fairly often	SE	Very often	SE	Missing	SE	N
<b>Gender</b>													
Male	41.0	2.3	17.8	1.6	27.7	1.9	6.3	0.9	2.8	0.6	4.3	0.8	1,129
Female	37.2	2.6	13.8	1.4	33.8	2.3	6.6	1.0	3.4	0.7	5.2	0.9	1,222
M	0.0	0.0	0.0	0.0	0.0	0.0	0.0	0.0	0.0	0.0	0.0	0.0	
<b>Residence</b>													
Urban	40.0	2.9	16.1	1.6	28.9	2.3	5.9	0.9	3.6	0.6	5.5	1.1	1,329
Rural	37.7	3.0	15.3	1.8	33.4	2.4	7.2	1.4	2.4	0.6	3.9	0.8	1,022
M	0.0	0.0	0.0	0.0	0.0	0.0	0.0	0.0	0.0	0.0	0.0	0.0	
<b>Income</b>													
Q1(poorest)	37.5	3.6	13.5	2.0	32.9	3.2	8.7	2.0	3.4	1.1	4.1	1.3	492
Q2	39.2	3.8	14.8	2.1	33.6	3.0	6.2	1.5	3.6	1.1	2.6	0.8	475
Q3	40.0	3.8	14.1	2.4	29.9	3.0	6.5	1.5	4.4	1.2	5.1	1.3	483
Q4	36.5	3.4	17.0	2.2	33.5	3.3	6.4	1.5	1.9	0.8	4.7	1.2	405
Q5(richest)	47.0	4.3	18.7	3.3	23.0	3.4	3.9	1.2	2.1	0.8	5.4	1.6	331
M	30.4	5.6	20.8	4.2	29.3	3.9	5.9	1.9	2.2	1.3	11.3	4.0	165
<b>Age</b>													
18-29	42.2	2.5	14.8	1.5	31.1	2.3	5.2	0.9	2.7	0.9	3.9	1.0	886
30-44	38.1	2.6	17.3	1.7	30.5	2.2	7.4	1.3	2.3	0.6	4.4	0.9	760
45-59	36.7	3.0	15.6	2.2	32.2	2.7	6.1	1.2	4.9	1.1	4.4	1.0	456
60-69	36.2	5.0	11.2	3.3	30.1	4.7	8.1	2.5	2.6	1.5	11.8	3.4	158
70-79	32.0	7.2	19.5	6.1	28.0	6.0	9.3	3.9	5.5	4.3	5.6	3.2	71
80+	31.4	16.2	20.9	15.1	20.4	12.3	10.9	10.6	6.0	4.8	10.5	7.7	20
M	0.0	0.0	0.0	0.0	0.0	0.0	0.0	0.0	0.0	0.0	0.0	0.0	
All	39.0	2.1	15.7	1.2	30.9	1.7	6.5	0.8	3.1	0.5	4.8	0.7	2,351

## 10.2 Inability to cope - q8001

	Never	SE	Almost never	SE	Sometimes	SE	Fairly often	SE	Very often	SE	Missing	SE	N
<b>Gender</b>													
Male	37.4	2.3	18.3	1.6	29.5	2.1	7.6	1.2	2.5	0.6	4.7	0.8	1,129
Female	31.6	2.3	15.4	1.5	35.0	1.9	9.5	1.3	3.1	0.7	5.3	0.9	1,222
M	0.0	0.0	0.0	0.0	0.0	0.0	0.0	0.0	0.0	0.0	0.0	0.0	
<b>Residence</b>													
Urban	36.6	2.6	17.1	1.6	30.6	2.1	6.6	0.9	3.6	0.9	5.6	1.1	1,329
Rural	31.5	2.8	16.3	2.0	34.7	2.2	11.2	2.1	1.9	0.5	4.3	0.9	1,022
M	0.0	0.0	0.0	0.0	0.0	0.0	0.0	0.0	0.0	0.0	0.0	0.0	
<b>Income</b>													
Q1(poorest)	26.8	3.0	14.4	2.3	35.9	3.0	14.6	2.8	3.5	1.4	4.7	1.4	492
Q2	36.0	3.6	14.2	1.9	33.7	3.0	9.4	1.9	3.4	1.2	3.2	0.9	475
Q3	37.7	3.5	16.6	2.1	29.9	2.9	7.4	1.6	3.2	1.0	5.3	1.3	483
Q4	31.8	3.4	18.6	2.2	36.4	3.0	6.1	1.2	2.3	1.1	4.7	1.2	405
Q5(richest)	43.4	3.8	21.5	3.5	23.8	3.1	4.5	1.3	1.4	0.8	5.4	1.6	331
M	31.0	5.3	17.7	4.0	32.2	4.5	6.2	2.1	2.5	1.3	10.5	3.9	165
<b>Age</b>													
18-29	40.4	2.6	15.5	1.5	31.9	2.1	5.7	1.0	2.5	0.8	4.0	1.0	886
30-44	32.2	2.4	19.4	1.8	33.2	2.2	8.7	1.3	1.7	0.6	4.8	0.9	760
45-59	31.9	2.8	16.2	2.2	31.5	2.6	11.6	2.1	4.4	1.0	4.4	1.0	456
60-69	23.5	4.0	15.2	3.1	31.6	4.4	14.0	3.9	3.2	1.9	12.5	3.4	158
70-79	30.1	6.9	14.5	5.7	34.7	6.4	9.5	3.8	5.5	4.3	5.6	3.2	71
80+	10.1	5.0	6.0	6.3	41.7	16.1	16.9	10.4	14.9	13.8	10.5	7.7	20
M	0.0	0.0	0.0	0.0	0.0	0.0	0.0	0.0	0.0	0.0	0.0	0.0	
All	34.4	1.9	16.8	1.2	32.4	1.5	8.6	1.0	2.9	0.5	5.0	0.7	2,351

### 10.3 Satisfaction with your health - q8002

	Very dissatisfied	SE	Dissatisfied	SE	Neither satisfied nor dissatisfied	SE	Satisfied	SE	Very Satisfied	SE	Missing	SE	N
<b>Gender</b>													
Male	8.1	1.1	10.4	1.3	14.3	1.6	39.4	2.2	23.4	1.9	4.5	0.8	1,129
Female	8.2	1.0	12.9	1.3	17.4	1.7	39.0	1.8	17.0	1.7	5.4	0.9	1,222
M	0.0	0.0	0.0	0.0	0.0	0.0	0.0	0.0	0.0	0.0	0.0	0.0	
<b>Residence</b>													
Urban	8.8	1.1	10.0	1.6	12.8	1.7	37.8	2.1	25.0	2.0	5.6	1.1	1,329
Rural	7.4	1.5	13.8	1.5	19.8	2.2	41.0	2.6	13.7	1.9	4.2	0.9	1,022
M	0.0	0.0	0.0	0.0	0.0	0.0	0.0	0.0	0.0	0.0	0.0	0.0	
<b>Income</b>													
Q1(poorest)	7.8	1.9	15.9	2.5	24.7	3.4	37.8	3.9	9.4	1.8	4.3	1.3	492
Q2	9.9	1.9	9.8	1.8	14.1	2.3	42.6	3.1	20.4	3.0	3.1	1.0	475
Q3	5.7	1.4	14.3	2.6	13.1	2.1	40.4	2.8	21.0	3.0	5.4	1.3	483
Q4	8.7	1.6	9.7	1.7	19.6	2.8	36.3	2.9	20.9	2.6	4.7	1.2	405
Q5(richest)	10.7	2.5	7.7	2.3	6.4	1.3	34.3	3.0	35.5	3.7	5.4	1.6	331
M	5.1	1.6	9.7	3.2	12.1	3.5	47.0	5.0	15.2	3.5	11.0	3.9	165
<b>Age</b>													
18-29	7.2	1.0	8.2	1.3	12.6	1.8	42.8	2.6	25.3	2.4	3.9	1.0	886
30-44	9.6	1.4	10.0	1.3	16.3	2.0	39.5	2.1	19.8	1.8	4.8	0.9	760
45-59	8.5	1.6	16.8	2.1	19.1	2.0	35.4	2.9	15.8	2.1	4.4	1.0	456
60-69	7.5	2.6	13.3	3.3	23.0	3.8	34.8	4.3	8.9	2.4	12.5	3.4	158
70-79	5.7	2.9	26.5	7.4	19.9	5.4	28.4	6.5	13.9	5.2	5.6	3.2	71
80+	0.0	0.0	52.1	15.4	0.0	0.0	29.3	16.4	8.1	5.0	10.5	7.7	20
M	0.0	0.0	0.0	0.0	0.0	0.0	0.0	0.0	0.0	0.0	0.0	0.0	
All	8.2	0.9	11.7	1.1	15.9	1.4	39.2	1.6	20.1	1.4	5.0	0.7	2,351

## 10.4 Feeling safe when alone at home - q8011

	Completely safe	SE	Very safe	SE	Moderately safe	SE	Slightly safe	SE	Not safe at all	SE	Missing	SE	N
<b>Gender</b>													
Male	11.0	1.8	19.1	1.7	23.1	1.6	20.1	1.7	21.6	2.3	5.1	0.9	1,129
Female	5.5	0.9	12.7	1.6	23.9	1.8	22.9	1.9	29.2	2.7	5.8	1.0	1,222
M	0.0	0.0	0.0	0.0	0.0	0.0	0.0	0.0	0.0	0.0	0.0	0.0	
<b>Residence</b>													
Urban	9.2	1.7	16.6	1.6	25.2	1.8	18.9	1.7	23.6	2.5	6.5	1.2	1,329
Rural	6.7	1.3	14.7	2.4	21.3	2.4	25.0	2.7	28.2	3.7	4.2	0.9	1,022
M	0.0	0.0	0.0	0.0	0.0	0.0	0.0	0.0	0.0	0.0	0.0	0.0	
<b>Income</b>													
Q1(poorest)	5.8	1.5	13.9	2.9	17.9	2.8	27.3	3.6	29.5	4.7	5.6	1.4	492
Q2	8.2	1.8	17.4	2.8	20.0	2.3	21.9	2.6	29.1	3.6	3.4	0.9	475
Q3	13.3	2.9	19.3	2.6	24.0	2.6	15.6	2.4	23.3	3.1	4.4	1.1	483
Q4	8.2	1.6	14.6	2.1	25.0	2.7	21.8	2.6	25.0	3.1	5.4	1.5	405
Q5(richest)	5.7	1.7	15.8	3.4	32.2	3.3	21.3	2.8	19.1	4.2	5.9	1.7	331
M	4.4	1.6	9.1	2.6	27.8	4.2	20.9	4.5	24.5	4.7	13.3	4.4	165
<b>Age</b>													
18-29	8.2	1.3	17.3	1.8	23.7	1.9	20.9	1.8	24.4	2.4	5.4	1.2	886
30-44	7.9	1.5	17.2	1.7	24.8	2.0	19.5	1.8	25.8	2.8	4.8	0.9	760
45-59	9.4	2.0	13.8	2.1	22.8	2.3	23.8	2.5	25.8	2.8	4.3	1.0	456
60-69	6.5	2.3	10.6	3.2	18.6	3.8	22.6	4.1	29.6	5.3	12.1	3.3	158
70-79	4.4	2.5	9.4	4.1	29.9	6.8	20.8	5.0	30.7	6.8	4.9	2.8	71
80+	8.1	5.0	0.0	0.0	0.0	0.0	73.4	11.2	8.0	6.7	10.5	7.7	20
M	0.0	0.0	0.0	0.0	0.0	0.0	0.0	0.0	0.0	0.0	0.0	0.0	
All	8.1	1.1	15.8	1.4	23.5	1.5	21.6	1.5	25.6	2.2	5.5	0.8	2,351

## 10.5 Feeling safe when walking down the street alone after dark - q8012

	Completely safe	SE	Very safe	SE	Moderately safe	SE	Slightly safe	SE	Not safe at all	SE	Missing	SE	N
<b>Gender</b>													
Male	5.8	1.2	10.9	1.4	17.2	1.6	19.5	1.9	41.2	2.7	5.4	0.9	1,129
Female	2.8	0.6	6.0	1.1	12.9	1.4	17.3	1.6	54.9	2.9	6.1	1.0	1,222
M	0.0	0.0	0.0	0.0	0.0	0.0	0.0	0.0	0.0	0.0	0.0	0.0	
<b>Residence</b>													
Urban	3.8	1.1	8.1	1.2	16.7	1.6	18.0	1.7	46.2	2.9	7.2	1.2	1,329
Rural	4.7	1.2	8.6	2.0	12.7	2.0	18.9	2.5	51.1	4.2	4.0	0.9	1,022
M	0.0	0.0	0.0	0.0	0.0	0.0	0.0	0.0	0.0	0.0	0.0	0.0	
<b>Income</b>													
Q1(poorest)	4.7	1.2	8.0	2.2	11.2	2.7	18.8	3.2	52.0	5.3	5.4	1.4	492
Q2	3.7	1.0	9.0	1.9	14.3	2.3	16.8	2.3	52.2	3.8	3.9	1.0	475
Q3	8.3	2.6	9.6	2.1	16.8	2.4	18.7	2.4	41.2	3.8	5.5	1.2	483
Q4	3.0	1.1	6.1	1.2	16.0	2.4	15.5	2.2	53.6	3.5	5.8	1.5	405
Q5(richest)	0.8	0.4	10.6	2.7	16.8	2.3	22.4	3.2	43.3	5.6	6.0	1.8	331
M	1.8	1.0	4.5	1.7	16.5	3.8	19.5	4.5	44.6	5.4	13.1	4.4	165
<b>Age</b>													
18-29	3.9	0.9	9.2	1.6	15.3	1.6	19.0	2.1	46.8	3.1	5.8	1.2	886
30-44	4.6	1.2	8.0	1.2	16.5	1.7	19.1	1.8	46.4	2.9	5.4	0.9	760
45-59	4.4	1.1	9.4	1.7	13.2	2.0	17.6	2.1	51.0	3.3	4.3	1.1	456
60-69	3.6	1.7	6.5	2.4	7.8	2.5	15.9	3.8	54.1	5.2	12.1	3.3	158
70-79	2.5	2.5	0.0	0.0	22.1	7.3	16.9	5.0	54.8	7.8	3.7	2.6	71
80+	6.0	4.8	0.0	0.0	15.4	12.2	5.0	5.1	63.1	16.5	10.5	7.7	20
M	0.0	0.0	0.0	0.0	0.0	0.0	0.0	0.0	0.0	0.0	0.0	0.0	
All	4.2	0.8	8.3	1.1	15.0	1.2	18.4	1.4	48.3	2.4	5.8	0.8	2,351