

REPORT OF BRAZIL

TABLE OF CONTENTS

1	Introduction
2	Methodology
2.1	Sampling
2.2.1	Geographic Component of the Survey
2.2.2	The map
2.3	Survey Metrics
2.3.1	Sample deviation index
2.3.2	HH Sample deviation index
2.3.3	Response rate
2.3.4	Missing data
2.3.5	Reliability
3	Socio-Demographic Profile
3.1	Household composition by residence and age groups according to income quintile
3.2	Selected age distributions by income quintile
3.3	Characteristics of head of household by income quintile
3.4	Household population: percent distribution of the de jure population by age, residence, marital status and education according to sex
3.5	Background characteristics of respondents: percent distribution of men and women by age, residence, marital status and education
4	Risk Factors
4.1	Prevalence of smoking and average daily tobacco consumption
4.2	Prevalence of life time abstainers, non-heavy drinkers, infrequent heavy drinkers and frequent heavy drinkers
4.3	Prevalence of insufficient intake of fruit and vegetables and insufficient physical activity
4.4	Access to improved drinking-water: percent distribution of households by

- type of access to drinking water
- 4.5 Access to improved sanitation: percent distribution of households by type of sanitation facility
- 4.6 Solid Fuel use for cooking: percent distribution of households by type of cooking fuel used
- 5 Coverage
- 5.01 Tuberculosis
- 5.02 HIV Prevention and Screening
- 5.03 Antenatal Care and Mother to Child Transmission of HIV
- 5.04 Birth Delivery Care
- 5.05 Child's Health - Common Illness
- 5.06 Child's Health - Danger Signs
- 5.07 Vaccinations Meeting WHO Timeline Recommendations for Children 12 to 23 months of Age with Vaccination Card
- 5.08 Vaccination Status of Children 12-23 Months
- 5.09 Women's Cancer Screening
- 5.10 Oral Health and Injuries
- 5.11 Self Reported Non-Communicable Conditions
- 5.12 Mental Health Conditions
- 5.13 Cataracts
- 6 Health State Descriptions
- 6.01 In general, rate your health today - q2000
- 6.02 Difficulty with 'work and household activities' in last 30 days - q2001
- 6.03 Difficulty with 'moving around' in last 30 days - q2010
- 6.04 Difficulty with 'vigorous activities' in last 30 days - q2011
- 6.05 Difficulty with 'self-care' in last 30 days - q2020
- 6.06 Difficulty with 'taking care of and maintaining general appearance' in last 30 days - q2021
- 6.07 Amount of 'bodily aches or pains' in last 30 days - q2030

- 6.08 Amount of 'bodily discomfort' in last 30 days - q2031
- 6.09 Difficulty with 'concentrating or remembering things' in last 30 days - q2050
- 6.10 Difficulty with 'learning a new task' in last 30 days - q2051
- 6.11 Difficulty with 'personal relationships or participation in the community' in last 30 days - q2060
- 6.12 Difficulty with 'dealing with conflicts and tensions' in last 30 days - q2061
- 6.13 Difficulty with 'seeing and recognizing a person you know across the road (20m)' in last 30 days - q2071
- 6.14 Difficulty with 'seeing an object at arm's length or in reading' in last 30 days - q2072
- 6.15 Problem with 'sleeping' in last 30 days - q2080
- 6.16 Problem with 'feeling rested and refreshed' in last 30 days - q2081
- 6.17 Problem with 'feeling sad, low, or depressed' in last 30 days - q2090
- 6.18 Problem with 'worry or anxiety' in last 30 days - q2091
- 6.19 Adjusted for vignette responses
- 7 Health System Responsiveness
 - 7.1 Self-reported utilization of health services and perceived unmet need
 - 7.2 Patient assessed characteristics of ambulatory health services
 - 7.3.1 Patient assessment of responsiveness domains for ambulatory services: percent reporting "Moderate", "Bad" or "Very bad" - 1
 - 7.3.2 Patient assessment of responsiveness domains for ambulatory services: percent reporting "Moderate", "Bad" or "Very bad" - 2
 - 7.4 Patient assessed characteristics of hospital inpatient health services
 - 7.5.1 Patient assessment of responsiveness domains for hospital inpatient services: percent reporting "Moderate", "Bad" or "Very bad" - 1
 - 7.5.2 Patient assessment of responsiveness domains for hospital inpatient services: percent reporting "Moderate", "Bad" or "Very bad" - 2
 - 7.6 Importance of different domains of responsiveness: percent reporting "Extremely Important"
- 8 Health Expenditure, Insurance and Human Resources for Health

- 8.0 Expenditure Background Indicators (2002)
- 8.1 Distribution of health payments across different population groups
- 8.2 Percent distribution of structure of out-of-pocket health payments
- 8.3 Financial sources used by households for paying for health services
- 8.4 Insurance Coverage
- 8.5 Human resources for health
- 9.1 Adult Mortality Chart 1
- 9.2 Adult Mortality Chart 2
- 9.3 Adult Mortality Chart 3
- 9.4 Adult Mortality Chart 4
- 10 Stress and Social Capital
- 10.1 Inability to control the important things in life - q8000
- 10.2 Inability to cope - q8001
- 10.3 Satisfaction with your health - q8002
- 10.4 Feeling safe when alone at home - q8011
- 10.5 Feeling safe when walking down the street alone after dark - q8012

1. Introduction

The World Health Organization initiated the World Health Survey (WHS) as a *data collection platform* to obtain information on the health of populations and on health systems. The WHS responds to the need of countries for a detailed and sustainable health information system and gathers data through surveys to measure essential population health parameters. The WHS uses standard survey procedures and instruments for general population surveys to gather comparable data across WHO Member States. These methods and instruments have been refined through scientific review of literature, extensive consultations with international experts and large-scale pilot tests. WHS is designed to evolve through its implementation by continuous input from collaborators, including policy makers, survey institutions, scientists and other interested parties. The data is jointly owned by the countries and the WHO, and there is a commitment for a long-term data collection, building local capacity and using this information for health policy.

The objectives of the World Health Survey were to:

- develop a **means** of providing:
 - **valid, relevant, reliable** and **comparable** information on **outcomes, functions** and **inputs** to health systems
 - to **supplement** the information provided by routine **HIS**
- build the **evidence base** necessary for policy-makers:
 - to **routinely monitor** if health systems are achieving the **desired goals**
 - and in some countries, to assess if the **increase in health resources** is having the desired effect

The introductory chapter of each country report will provide details on the current sources of data from routine health information systems and ad hoc surveys. It will describe the health situation in the country and identify gaps. It will also present a brief overview on the health system organization within the country.

2. Sampling

The WHO sampling guidelines emphasized scientific principles of survey sampling as explicit standards for quality, included examples of good sampling plans, and identified quality assurance standards for countries to adhere to. WHO and technical advisers provided technical support to countries when needed. The following principles were used for sampling in the WHS:

1. The sample should target the *de facto* population (i.e. all people living in that country including guest workers, immigrants and refugees) and not *de jure* population (i.e. the citizens of that country alone) with complete geographic coverage of the country, if possible, or a representative geographic segment of the country.
2. A *sample frame* with 90% coverage that included all key subgroups of interest. Enumeration or listing of households to update the frame was recommended.
3. The WHS sample identified all adult members of the general population aged 18 years or older as its sample. Households are selected using a random, stratified sampling procedure. One individual per household is then selected through a random selection procedure using the Kish table method.
4. The WHS used a sampling strategy which encompasses a known non-zero selection probability for any individual included in the study. This makes it possible to extrapolate the data to the whole population. Households and individuals are selected with a known probability in order to provide selection probabilities for each household and individual in the data set.
5. The WHS sampling strategy was without replacement and categories of non-respondents were clearly defined.
6. The WHS used GPS devices in certain countries and digitized maps to geocode the data within specified guidelines.

Each national report will present a detailed description of the sampling strategy and the allocation tables

2.2.1 Geographic Component of the Survey

Geographic Information refers to any information associated with a location on the Earth's surface. This location can be associated to a coordinate (latitude/longitude), a place's name, a postal address or any other geographic object.

Household Surveys represent an important source of information. If the geographic location of the surveyed clusters is collected at the same time that the interview is conducted users are then able to integrate the spatial dimension in their analysis

The geographic component of the WHO WHS is stored in two sections of the questionnaire:

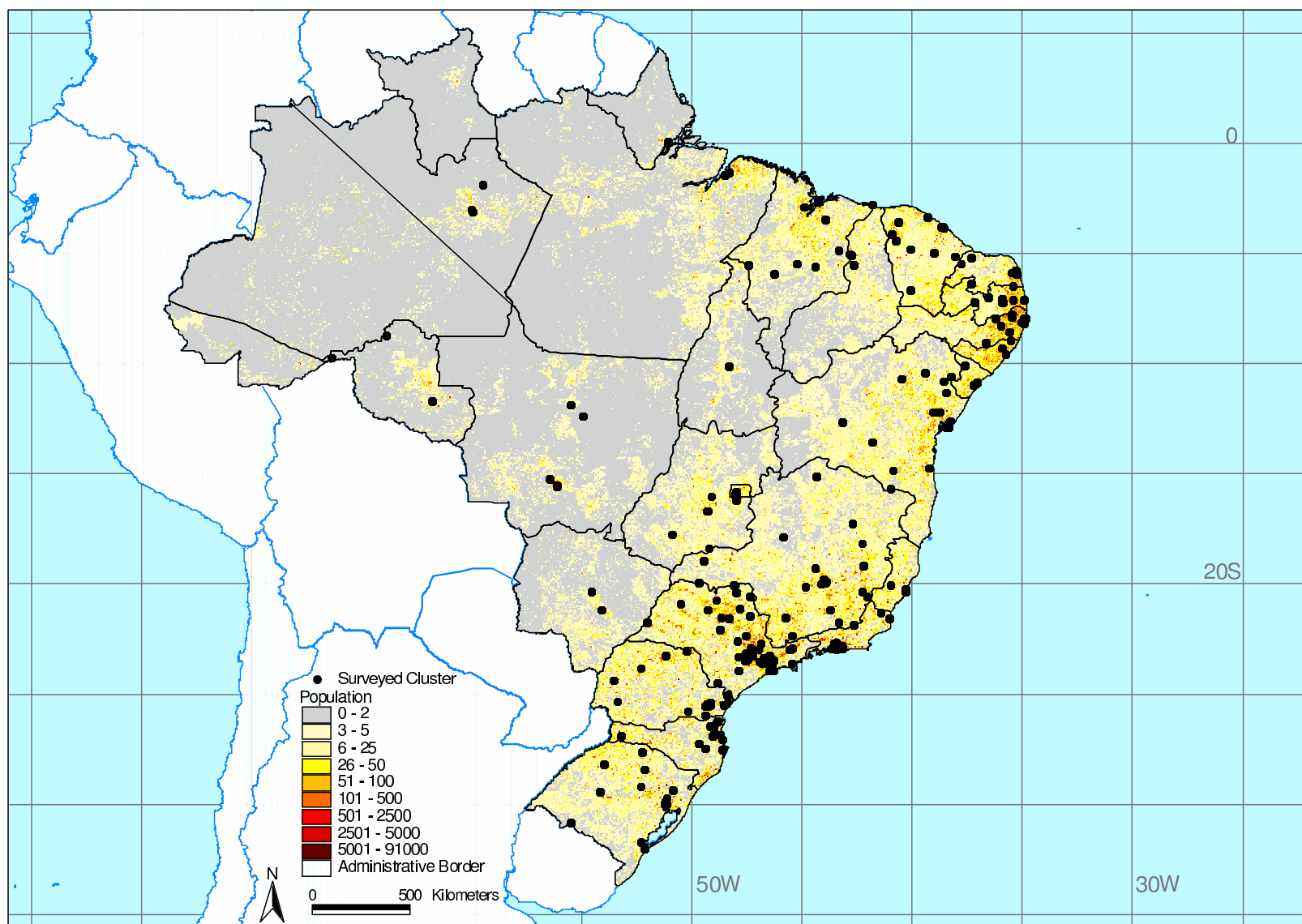
- 0100 Sampling Information allowing the link between the location of each cluster and the sampling frame used for the survey. This section has also been used in order to collect the type of setting in which each household was located at the time of the survey. This section of the questionnaire has been used for all the countries part of the WHO WHS
- 0200 Geocoding Information for the collection of the latitude and longitude of each household. This section has only been used in 27 countries where GPS devices were available or have been provided. The choice of these countries has been done on the basis of the availability of digital maps delimiting the surveyed clusters, the field data collection planning and their distribution within the different WHO regions. Specific training and field material have been prepared and used by the interviewers or field supervisors in these countries in order to collect the latitude and longitude of each of the surveyed household.

As the sampling design may not always include the administrative structure of the country and as the codes entered in the data set for the sampling level needed to be labelled, a key correspondence table containing this information has been collected after the survey itself.

Once all the survey data and the key correspondence table available a specific protocol has been applied to the two sections mentioned earlier in order to clean eventual data collection or data entry mistakes as well as to fill the gaps in close collaboration with the survey institution.

The questionnaire as well as the training material and data cleaning protocols used can be downloaded from the WHO WHS web site (<http://www.who.int/healthinfo/survey/en/index.html>) in the "Survey Instrument and Related Documents" section.

BRAZIL WHS 2003 Sampling Distribution



Data Source:

- Cluster Location: collected with GPS devices during WHS 2003
- Administrative Boundaries: DCW modified by WHO
- Population distribution: extracted from the Landscan database 2001

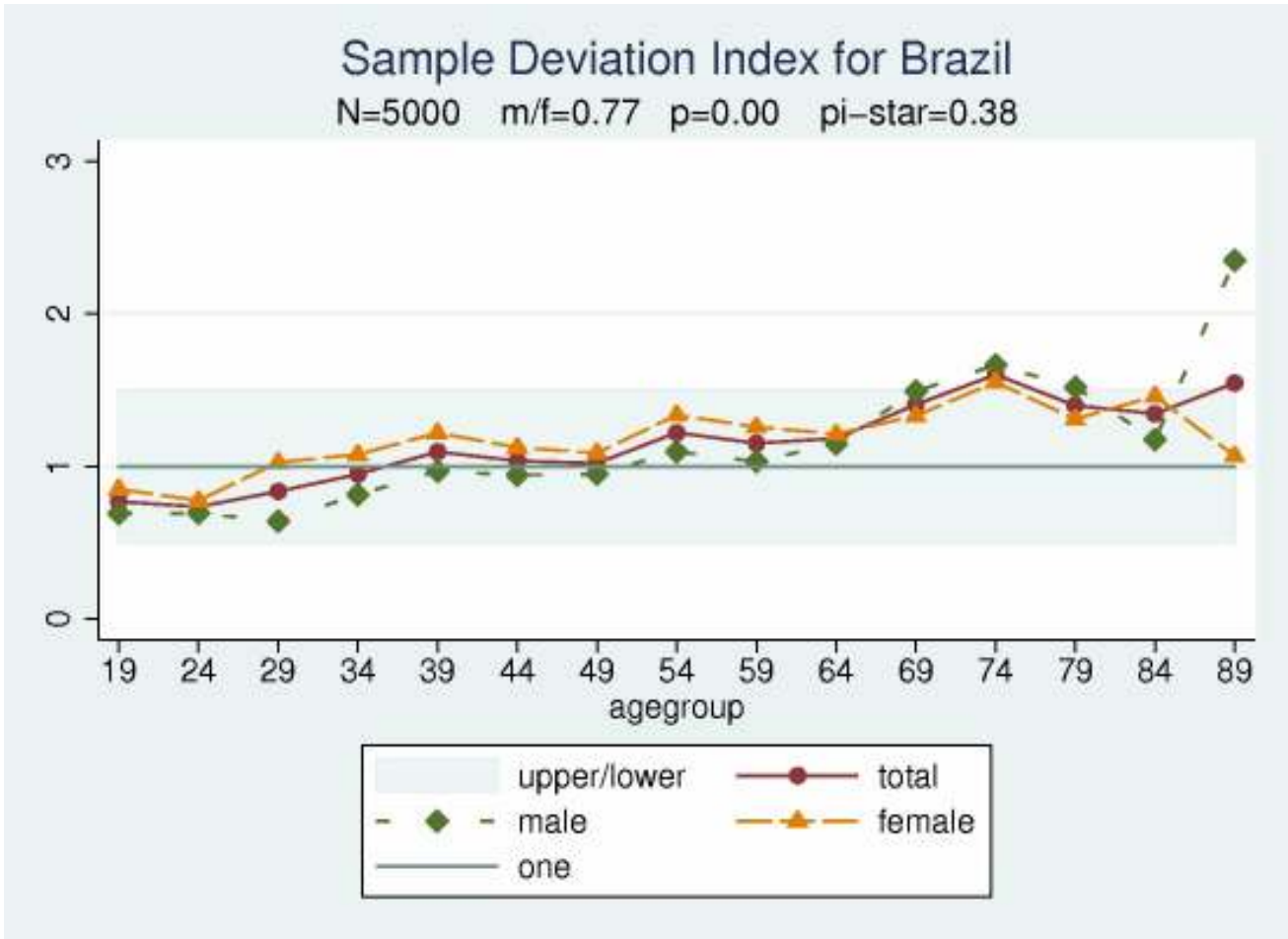
Map Projection: un-projected (Geographic)
Reference System: WGS 84 datum

Map created 11 April 2005

The boundaries and names shown and the designations used on this map do not imply the expression of any opinion whatsoever on the part of the World Health Organization concerning the legal status of any country, territory, city or area or of its authorities, or concerning the delimitation of its frontiers or boundaries. Dotted lines on maps represent approximate border lines for which there may not yet be full agreement.
© WHO 2005. All rights reserved

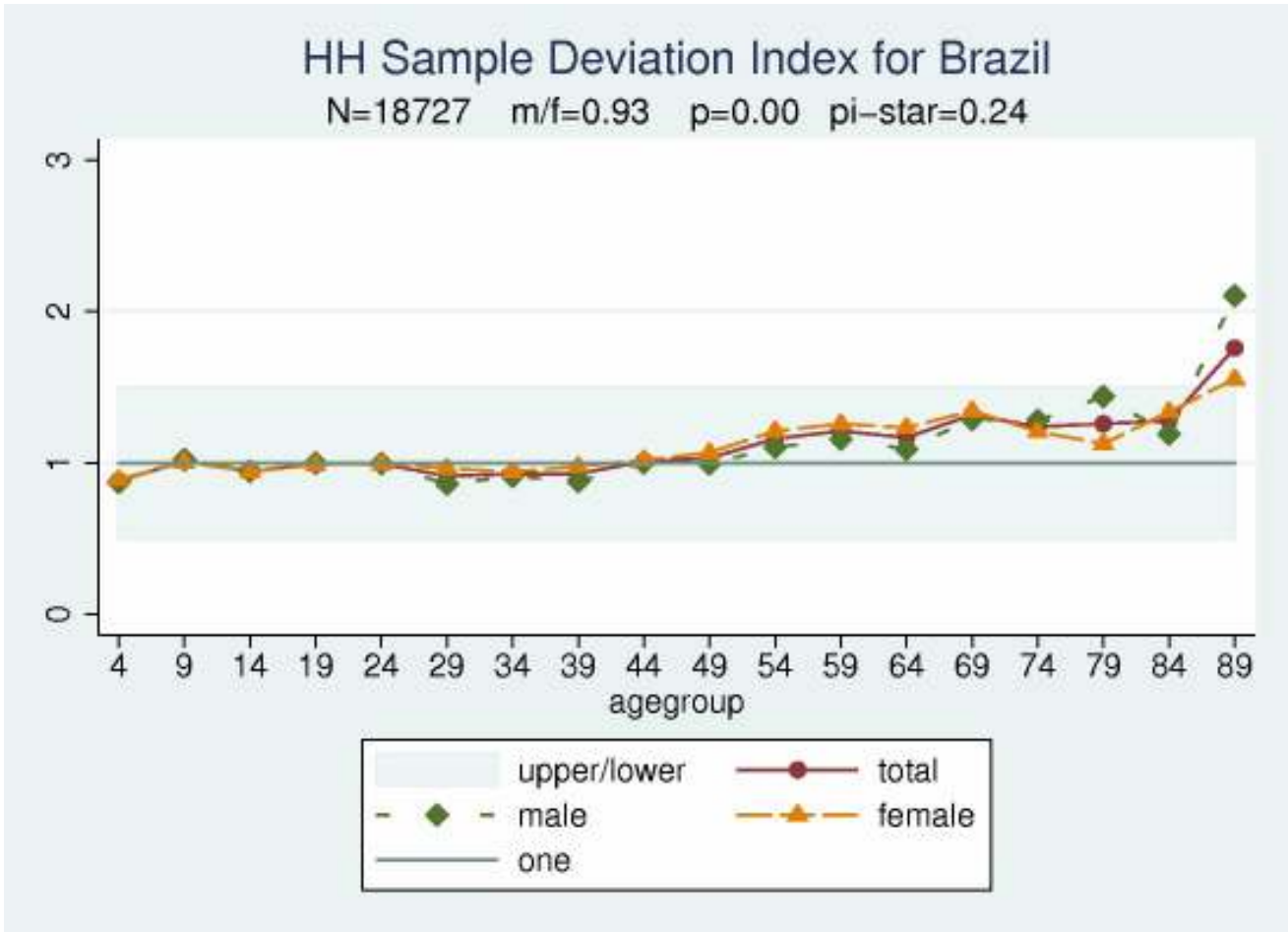


2.3.1 Sample deviation index



SDI

2.3.2 HH Sample deviation index

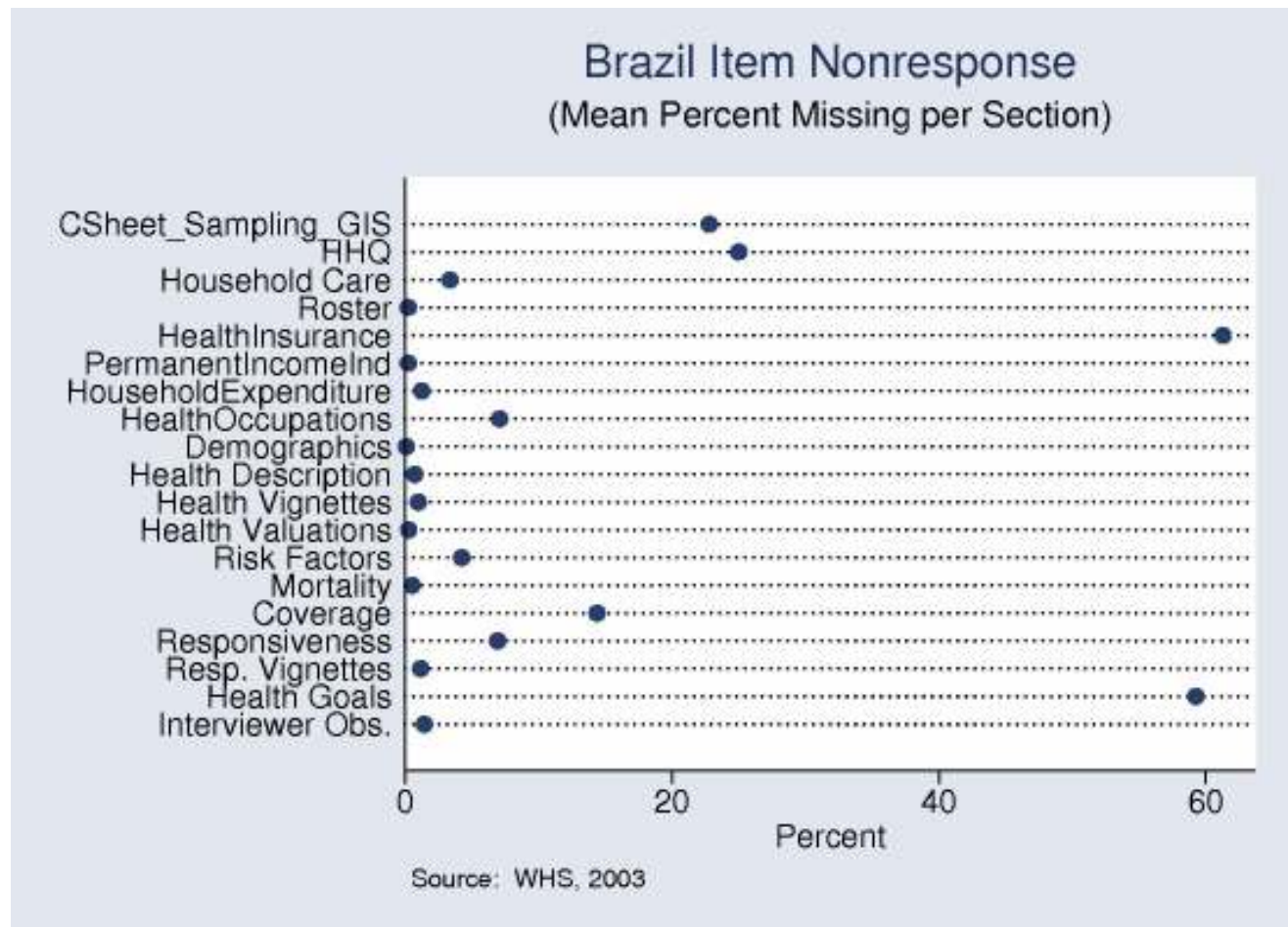


HDI

2.3.3 Response rate

Household	
Selected	7,130
Interviewed	5,000
Percentages	70
Individual	
Selected	4,999
Interviewed	4,999
Percentages	100

2.3.4 Missing data



2.3.5 Reliability

Insufficient / No data available

3.1 Household composition by residence and age groups according to income quintile

	Percent Rural	SE	Mean Number of									
			Household members	SE	Children < 2 years	SE	Children < 5years	SE	Children 5 -17 years	SE	Persons 18+ years	SE
Q1(poorest)	52.6	3.02	3.8	0.08	0.2	0.01	0.4	0.03	1.2	0.05	2.2	0.05
Q2	21.8	2.54	3.6	0.06	0.1	0.01	0.3	0.02	1.0	0.04	2.3	0.04
Q3	8.7	1.73	3.6	0.07	0.1	0.01	0.3	0.02	0.9	0.04	2.5	0.04
Q4	3.0	1.00	3.6	0.09	0.1	0.01	0.3	0.02	0.7	0.04	2.6	0.06
Q5(richest)	1.0	0.53	3.5	0.08	0.1	0.01	0.2	0.01	0.7	0.04	2.6	0.06
All	16.9	0.43	3.6	0.04	0.1	0.01	0.3	0.01	0.9	0.02	2.5	0.03

Note: table based on de jure members of household i.e. usual residents

3.2 Selected age distributions by income quintile

	Females Age 18–49	Persons Age 50+	Persons Age 60+
Q1(poorest)	763	562	323
Q2	788	613	340
Q3	884	635	366
Q4	927	770	393
Q5(richest)	1,066	791	362
All	4,428	3,371	1,784

Note: table based on de jure members of household i.e. usual residents

3.3 Characteristics of head of household by income quintile

	Mean Age of Head	SE	Median Education of Head	Percent Female Head	SE
Q1 (poorest)	45	0.74	2	1.2	0.35
Q2	45	0.67	3	1.3	0.35
Q3	46	0.68	3	2.3	0.52
Q4	48	0.71	4	3.0	0.62
Q5 (richest)	48	0.62	5	4.2	0.65
All	47	0.36	3	2.6	0.26

Education

1=no formal education

2=less than primary school

3=primary school completed

4=secondary school completed

5=high school (or equivalent) completed

6=college/pre-university/university completed

7=post graduate degree completed

Note: table based on de jure members of household i.e. usual residents

3.4 Household population: percent distribution of the de jure population by age, residence, marital status and education according to sex

	Male	SE	Female	SE	Missing	Total	SE
Age							
0-4	8.3	0.40	7.7	0.30		8.00	0.30
5-14	19.5	0.50	17.4	0.50		18.40	0.40
15-29	27.8	0.60	26.8	0.50		27.30	0.40
30-44	21.0	0.50	21.5	0.40		21.20	0.40
45-59	13.9	0.40	15.4	0.40		14.70	0.40
60-69	5.3	0.30	6.4	0.30		5.90	0.20
70-79	3.0	0.20	3.4	0.20		3.20	0.20
80+	0.9	0.10	1.3	0.10		1.10	0.10
Missing	0.1	0.00	0.1	0.00		0.10	0.00
Residence							
Urban	78.8	0.80	80.3	1.00		79.60	0.90
Rural	18.8	0.70	17.0	0.60		17.80	0.60
Missing	2.4	0.90	2.7	1.00		2.60	0.90
Marital_Status							
Never	53.6	0.50	47.5	0.60		50.40	0.50
Currently	31.4	0.70	29.5	0.70		30.40	0.70
Separated	2.0	0.20	4.0	0.20		3.00	0.10
Divorced	0.9	0.10	1.8	0.20		1.40	0.10
Widowed	1.3	0.10	7.2	0.30		4.40	0.20
CoHabiting	10.4	0.50	9.8	0.50		10.10	0.50
Missing	0.3	0.10	0.2	0.00		0.20	0.10
Education							
NoFormal	19.9	0.60	19.4	0.60		19.60	0.50
LessthanPrimary	20.0	0.60	18.3	0.50		19.20	0.50
Primary	25.6	0.70	25.0	0.70		25.30	0.60
Secondary	14.2	0.50	14.9	0.40		14.60	0.40
HighSchool	15.2	0.70	16.9	0.60		16.10	0.60
College	3.6	0.50	4.2	0.40		3.90	0.40
PostGraduate	0.5	0.10	1.0	0.20		0.80	0.10
Missing	0.9	0.10	0.5	0.10		0.70	0.10
Total	100.0		100.0			100.00	
Number	9,044.0		9,683.0			18,727.00	
Number of Households						5,000.00	

3.5 Background characteristics of respondents: percent distribution of men and women by age, residence, marital status and education

	Male	SE	Female	SE	Missing	Total	SE
Age							
18-29	35.0	1.40	32.9	1.20		33.90	0.90
30-44	33.3	1.20	32.9	1.00		33.10	0.80
45-59	20.4	1.00	20.8	0.90		20.60	0.60
60-69	6.8	0.60	7.6	0.60		7.20	0.40
70-79	3.4	0.30	4.3	0.40		3.90	0.30
80+	1.0	0.20	1.6	0.30		1.30	0.20
Missing	0.0	0.00	0.0	0.00		0.00	0.00
Residence							
Urban	80.8	1.10	81.8	1.00		81.30	0.80
Rural	17.0	1.00	16.3	0.90		16.70	0.60
Missing	2.1	0.80	1.9	0.70		2.00	0.70
Marital_Status							
Never	32.1	1.30	23.7	1.10		27.80	0.90
Currently	46.7	1.40	42.9	1.40		44.70	1.10
Separated	2.6	0.40	5.6	0.50		4.20	0.30
Divorced	1.2	0.20	2.3	0.30		1.80	0.20
Widowed	1.4	0.20	9.8	0.70		5.80	0.40
CoHabiting	15.9	1.00	15.7	1.00		15.80	0.80
Missing	0.0	0.00	0.0	0.00		0.00	0.00
Education							
NoFormal	10.3	0.80	10.2	0.70		10.30	0.60
LessthanPrimary	14.4	0.90	16.3	0.90		15.40	0.70
Primary	27.3	1.40	27.4	1.10		27.40	1.00
Secondary	17.0	0.90	15.0	0.80		16.00	0.60
HighSchool	24.8	1.30	23.8	1.20		24.30	1.00
College	5.1	0.70	5.9	0.80		5.50	0.70
PostGraduate	1.2	0.40	1.2	0.30		1.20	0.30
Missing	0.0	0.00	0.0	0.00		0.00	0.00
Total	100.0		100.0			100.00	
Number	2,423.0		2,577.0			5,000.00	

4.1 Prevalence of smoking and average daily tobacco consumption

	Current daily smoker	SE	Smoker, not daily	SE	Non-smoker	SE	Missing	Average daily tobacco consumption*	SE	Number of respondents
Sex										
Male	21.4	1.00	4.6	0.50	73.0	1.10	1.1	19.9	2.10	2,423
Female	13.7	0.80	3.7	0.40	81.9	0.90	0.6	14.3	0.90	2,577
Missing										0
Residence										
Urban	17.4	0.80	3.8	0.40	78.0	0.90	0.8	19.0	1.70	4,067
Rural	17.2	1.80	5.6	1.00	76.0	1.90	1.2	12.1	1.10	833
Missing										100
Income Quintile										
Q1	23.4	1.90	6.8	1.00	68.6	1.90	1.2	14.9	2.60	860
Q2	19.6	1.50	3.8	0.70	75.5	1.60	1.0	19.5	2.60	888
Q3	16.4	1.50	3.9	0.70	78.8	1.60	0.9	15.0	0.90	954
Q4	15.9	1.50	2.8	0.60	80.9	1.60	0.4	19.8	2.80	1,050
Q5	13.1	1.40	3.4	0.70	82.8	1.50	0.7	21.0	3.20	1,113
Missing										135
Age										
18-29	13.5	1.10	5.1	0.70	80.3	1.30	1.0	16.0	1.60	1,697
30-44	20.6	1.20	3.9	0.50	74.9	1.20	0.6	19.4	2.20	1,654
45-59	21.0	1.50	3.9	0.70	74.0	1.60	1.0	18.4	2.20	1,030
60-69	17.3	1.90	2.4	0.80	79.8	2.00	0.5	13.3	1.20	362
70-79	7.7	1.70	2.8	0.90	88.6	2.00	0.9	12.3	2.50	193
80+	12.5	3.80	0.9	0.90	83.9	4.20	2.6	13.5	6.30	65
Missing										0
All	17.4	0.70	4.1	0.40	77.6	0.80	0.8	17.6	1.40	5,000

* Denominator used is current daily smoker

4.2 Prevalence of life time abstainers, non-heavy drinkers, infrequent heavy drinkers and frequent heavy drinkers

	Life time abstainers	SE	Non-heavy drinkers	SE	Infrequent Heavy Drinkers*	SE	Frequent Heavy drinkers**	SE	Missing	Number of respondents
Sex										
Male	12.5	1.00	68.4	1.30	15.7	1.00	3.3	0.40	0.0	2,423
Female	30.4	1.50	65.5	1.40	3.6	0.40	0.5	0.20	0.0	2,577
Missing										0
Residence										
Urban	20.4	1.20	67.4	1.20	10.1	0.70	2.1	0.30	0.0	4,067
Rural	27.8	3.00	65.2	3.20	5.8	1.10	1.1	0.30	0.0	833
Missing										100
Income Quintile										
Q1	31.3	2.50	60.8	2.70	7.1	1.00	0.8	0.30	0.0	860
Q2	25.3	2.30	64.0	2.20	8.4	1.10	2.3	0.60	0.0	888
Q3	22.6	1.80	65.5	2.00	10.6	1.30	1.3	0.40	0.0	954
Q4	19.7	1.70	67.5	2.10	10.3	1.30	2.5	0.60	0.0	1,050
Q5	12.3	1.60	75.2	1.80	10.1	1.20	2.4	0.60	0.0	1,113
Missing										135
Age										
18-29	18.8	1.30	66.2	1.60	12.3	1.10	2.6	0.50	0.0	1,697
30-44	18.5	1.40	68.3	1.50	11.4	0.90	1.9	0.40	0.0	1,654
45-59	26.3	1.70	66.3	1.80	6.1	0.80	1.4	0.40	0.0	1,030
60-69	27.3	2.70	68.3	2.80	3.0	0.80	1.4	0.70	0.0	362
70-79	29.7	3.20	68.5	3.10	1.4	0.80	0.3	0.30	0.0	193
80+	50.6	5.90	49.4	5.90	0.0	0.00	0.0	0.00	0.0	65
Missing										0
All	21.7	1.10	66.9	1.10	9.5	0.60	1.9	0.20	0.0	5,000

*Infrequent heavy drinkers: 1-2 days with 5 or more standard drinks per week(last 7 days)

**Frequent heavy drinkers: 3 or more days with 5 or more standard drinks per week(last 7 days)

4.3 Prevalence of insufficient intake of fruit and vegetables and insufficient physical activity

	Fruit and vegetable intake					Physical Activity					Number of respondents
	*Insufficient	SE	Sufficient	SE	Missing	**Insufficient	SE	Sufficient	SE	Missing	
Sex											
Male	88.0	0.80	12.0	0.80	0.0	19.7	1.10	80.3	1.10	0.0	2,423
Female	85.8	1.00	14.2	1.00	0.0	20.4	1.10	79.6	1.10	0.0	2,577
Missing											0
Residence											
Urban	85.7	0.80	14.3	0.80	0.0	21.5	1.00	78.5	1.00	0.0	4,067
Rural	92.5	1.50	7.5	1.50	0.0	12.7	1.60	87.3	1.60	0.0	833
Missing											100
Income Quintile											
Q1	94.3	0.90	5.7	0.90	0.0	15.5	1.60	84.5	1.60	0.0	860
Q2	90.8	1.30	9.2	1.30	0.0	19.9	1.50	80.1	1.50	0.0	888
Q3	88.6	1.10	11.4	1.10	0.0	21.4	1.90	78.6	1.90	0.0	954
Q4	86.0	1.30	14.0	1.30	0.0	20.1	1.60	79.9	1.60	0.0	1,050
Q5	77.1	1.70	22.9	1.70	0.0	22.5	1.80	77.5	1.80	0.0	1,113
Missing											135
Age											
18-29	89.2	1.00	10.8	1.00	0.0	16.3	1.30	83.7	1.30	0.0	1,697
30-44	86.9	1.00	13.1	1.00	0.0	16.4	1.10	83.6	1.10	0.0	1,654
45-59	85.4	1.40	14.6	1.40	0.0	21.5	1.50	78.5	1.50	0.0	1,030
60-69	81.4	2.20	18.6	2.20	0.0	29.0	2.50	71.0	2.50	0.0	362
70-79	84.0	2.40	16.0	2.40	0.0	45.1	3.40	54.9	3.40	0.0	193
80+	86.9	4.70	13.1	4.70	0.0	63.8	5.50	36.2	5.50	0.0	65
Missing											0
All	86.9	0.70	13.1	0.70	0.0	20.0	0.90	80.0	0.90	0.0	5,000

*Insufficient intake of fruit/vegetables: less than 5 servings of fruit/vegetables per one typical day

**Insufficient physical activity: less than 150 minutes per week(last 7 days) spent on walking/moderate activity/vigorous activity

4.4 Access to improved drinking-water: percent distribution of households by type of access to drinking water

	Piped into households	SE	other improved sources	SE	Total improved sources	SE	No improved sources	SE	Missing	Number of households
Residence										
Urban	94.2	1.10	4.4	1.00	98.6	0.40	1.4	0.40	0.0	4,057
Rural	39.5	6.10	42.2	5.30	81.6	4.10	18.4	4.10	0.0	824
Missing										119
Income_Quintile										
Q1(poorest)	49.2	3.80	32.6	3.50	81.8	3.10	18.2	3.10	0.0	931
Q2	82.6	2.60	14.5	2.40	97.0	0.80	3.0	0.80	0.0	933
Q3	93.8	1.30	5.4	1.20	99.2	0.30	0.8	0.30	0.0	940
Q4	97.5	0.60	2.3	0.60	99.8	0.10	0.2	0.10	0.0	984
Q5(richest)	99.1	0.50	0.9	0.50	100.0	0.00	0.0	0.00	0.0	1,053
Missing										159
Total	84.7	1.30	10.7	1.20	95.4	0.70	4.6	0.70	0.0	5,000

other improved sources: public standpipe/protected tube well/borehole/protected dug well/protected spring/rainwater collection

no improved sources: unprotected well/unprotected spring/water taken directly from a pond or stream/tanker truck water/vendor provided water

4.5 Access to improved sanitation: percent distribution of households by type of sanitation facility

	Flush toilet to sewage system	SE	Other improved toilet facilities	SE	Total improved sanitation	SE	No improved sanitation	SE	Missing	Number of households
Residence										
Urban	71.9	2.40	23.0	2.30	95.0	0.80	5.0	0.80	0.0	4,057
Rural	12.8	4.00	57.8	5.20	70.6	4.90	29.4	4.90	0.0	824
Missing										119
Income_Quintile										
Q1(poorest)	14.7	1.90	49.8	3.50	64.5	3.40	35.5	3.40	0.0	931
Q2	46.2	3.10	47.6	3.30	93.8	1.40	6.2	1.40	0.0	933
Q3	67.7	3.00	29.3	2.90	96.9	0.90	3.1	0.90	0.0	940
Q4	84.3	2.10	14.7	2.10	99.0	0.30	1.0	0.30	0.0	984
Q5(richest)	92.1	1.60	7.0	1.50	99.2	0.40	0.7	0.40	0.1	1,053
Missing										159
Total	61.3	2.20	29.4	2.10	90.7	1.00	9.3	1.00	0.0	5,000

other improved sanitation facilities: connection to septic system/pour-flush latrine/covered dry latrine(with privacy) [provided facilities not shared]
no improved sanitation: uncovered dry latrine(without privacy)/bucket latrine/no facilities(open defecation)

4.6 Solid Fuel use for cooking: percent distribution of households by type of cooking fuel used

	Electricity, Gas	SE	Kerosene	SE	Solid fuels on improved stove	SE	Solid fuels on traditional stove	SE	Total solid fuel use	SE	Missing	Number of households
Residence												
Urban	95.3	0.70	0.0	0.00	0.6	0.20	4.1	0.70	4.6	0.70	0.0	4,057
Rural	47.0	5.20	0.0	0.00	19.4	5.20	33.6	5.10	53.0	5.20	0.0	824
Missing												119
Income_ Quintile												
Q1(poorest)	50.4	3.20	0.1	0.10	8.8	2.30	40.7	3.50	49.5	3.20	0.0	931
Q2	88.6	2.40	0.1	0.10	6.9	2.40	4.4	0.80	11.4	2.50	0.0	933
Q3	96.1	1.40	0.0	0.00	3.0	1.40	0.9	0.40	3.9	1.40	0.0	940
Q4	98.6	0.50	0.0	0.00	0.6	0.40	0.8	0.30	1.4	0.50	0.0	984
Q5(richest)	99.9	0.10	0.0	0.00	0.1	0.10	0.0	0.00	0.1	0.10	0.0	1,053
Missing												159
Total	86.8	1.10	0.0	0.00	3.7	0.90	9.5	1.00	13.1	1.10	0.0	5,000

5.01 Tuberculosis

		Tuberculosis			
	Total	Need	Coverage	SE	M
Sex					
Female	2,577	15.4	19.4	2.3	0.0
Male	2,423	15.0	14.1	2.0	0.2
Missing	0				
Residence					
Urban	4,067	14.5	18.6	1.9	0.2
Rural	833	18.5	9.0	2.5	0.0
Missing	100				
Income_Quintile					
Q1(poorest)	860	20.8	13.4	2.6	0.0
Q2	888	18.1	15.2	3.0	0.6
Q3	954	14.4	17.2	3.5	0.0
Q4	1,050	13.7	17.0	3.3	0.0
Q5(richest)	1,113	10.4	23.8	4.9	0.0
Missing	135				
Age					
18-29	1,697	14.3	14.3	3.0	0.0
30-44	1,654	13.0	12.3	2.4	0.4
45-59	1,030	15.4	19.7	3.7	0.0
60-69	362	23.2	22.3	4.5	0.0
70-79	193	23.3	27.2	6.2	0.0
80+	65	21.2	33.3	14.0	0.0
Missing	0				
Total	5,000	15.2	16.9	1.6	0.1

M = % Missing of Covered SE= Standard Error of % Covered

Tuberculosis Indicators:

"Need" = % of all respondents with self-reported continuous cough lasting 3 weeks, OR had blood in phlegm, OR had coughed blood in the last 12 months

"Coverage" = % of respondents with self reported symptoms who indicated receiving a TB screening test in the last 12 months.

5.02 HIV Prevention and Screening

Insufficient / No data available

5.03 Antenatal Care and Mother to Child Transmission of HIV

	Antenatal Care											Maternal to Child HIV Trans.			
	Women 18-49	Birth in last 5 years	Cov	SE	Visit 1x	Visit 2x	Visit 3x	Blood pressure checked	Blood sample taken	Told Signs of Pregnancy Complications	M	Birth in last 2 years	Cov	SE	M
Residence															
Urban	1,538	26.5	56.4	2.7	95.8	95.3	94.3	95.9	92.0	59.4	1.5	11.9	56.2	3.6	0.0
Rural	323	33.3	48.7	6.5	89.2	88.3	87.4	88.3	83.4	51.2	1.7	13.3	25.0	7.9	0.0
Missing	33														
Income_Quintile															
Q1(poorest)	331	41.1	43.6	4.3	86.4	85.7	84.6	85.1	78.3	47.1	2.6	15.8	22.6	5.3	0.0
Q2	331	32.7	54.8	5.2	98.0	97.1	96.7	95.5	96.0	57.2	0.0	15.1	46.3	6.9	0.0
Q3	376	27.2	44.5	5.1	97.7	96.9	96.9	98.5	89.9	47.5	1.6	12.0	53.3	8.1	0.0
Q4	368	25.7	67.8	5.3	98.8	98.4	96.7	98.8	96.6	67.8	0.0	12.3	70.2	6.5	0.0
Q5(richest)	440	15.7	75.5	6.1	95.9	95.9	93.7	100.0	97.7	81.8	4.0	6.8	72.7	7.9	0.0
Missing	48														
Total	1,895	27.8	54.4	2.5	94.5	94.0	93.0	94.3	90.2	57.5	1.6	12.2	49.5	3.3	0.0

M = % Missing of Covered SE= Standard Error of %Covered

Antenatal Care Indicators:

Total = Number of female respondents of reproductive age (18-49 years old)

"Birth in Last 5 Years" = % of female respondents of reproductive age indicating having had a live birth in the last 5 years.

"Cov" = % of female respondents of reproductive age with live birth in the last 5 years who indicated having been seen at least 3 times or more by health care professional, received blood pressure, blood sample taken, and told signs about complications for their last pregnancy (aggregate antenatal care indicator).

"Visit 1x" "Visit 2x" "Visit 3x" = % of female respondents of reproductive age with live birth in the last 5 years who indicated having been seen at least once, twice or three times or more respectively by a health care professional during their last pregnancy.

"Blood pressure checked" = % of female respondents of reproductive age with live birth in the last 5 years who had blood pressure taken when they saw health care professional during their last pregnancy.

"Blood sample taken" = % of female respondents of reproductive age with live birth in the last 5 years who had a blood sample taken when they saw health care professional during their last pregnancy.

"Told Signs of Pregnancy Complications" = % of female respondents of reproductive age with live birth in the last 5 years who had been told signs of pregnancy complications when they saw health care professional during their last pregnancy.

Maternal to Child HIV Transmission Indicators:

"Birth in last 2 years" = % of female respondents of reproductive age indicating having had a live birth in the last 2 years.

"Cov" = % of female respondents of reproductive age with live birth in the last 2 years who indicated having been counseled and tested and given results for HIV during their last pregnancy.

5.04 Birth Delivery Care

	Women 18-49	Delivery Care				Place of Delivery						
		Need	Coverage	SE	M	Public Health Facility	SE	Private Health Facility	SE	Home	SE	M
Residence												
Urban	1,538	26.5	99.1	0.4	0.0	59.3	3.2	40.3	3.2	0.2	0.2	0.2
Rural	323	33.3	95.2	1.8	0.0	68.6	5.8	25.4	6.0	5.9	2.8	0.0
Missing	33											
Income Quintile												
Q1(poorest)	331	41.1	94.0	1.7	0.0	76.6	3.9	17.9	3.8	5.4	2.2	0.0
Q2	331	32.7	100.0	0.0	0.0	68.2	4.6	31.8	4.6	0.0	0.0	0.0
Q3	376	27.2	99.2	0.8	0.0	64.9	5.1	35.1	5.1	0.0	0.0	0.0
Q4	368	25.7	100.0	0.0	0.0	52.3	5.4	47.7	5.4	0.0	0.0	0.0
Q5(richest)	440	15.7	100.0	0.0	0.0	26.7	6.2	72.0	6.0	0.0	0.0	1.3
Missing	48											
Total	1,895	27.8	98.1	0.5	0.0	61.6	2.8	36.6	2.8	1.6	0.6	0.2

M = % Missing of Covered SE= Standard Error of % Covered Birth Delivery Care Indicators:

Total = Number of female respondents of reproductive age (18-49 years old)

"Birth in Last 5 Years" = % of female respondents of reproductive age indicating having had a live birth in the last 5 years.

"Coverage" = % of female respondents of reproductive age with live birth in the last 5 years who indicated having received assistance with birth delivery from a health care professional (doctor, nurse or midwife) during their last birth.

"Public Health Facility" = % of female respondents of reproductive age with live birth in the last 5 years who indicated having their last birth delivered in a public health facility.

"Private Health Facility" = % of female respondents of reproductive age with live birth in the last 5 years who indicated having their last birth delivered in a private health facility.

"Home" = % of female respondents of reproductive age with live birth in the last 5 years who indicated having their last birth delivered home or in the field (etc.)

5.05 Child's Health - Common Illness

	Total Children under Age of 5	Fever	More liquid	SE	Same or more food	SE	M	Cough	More liquid	SE	Same or more food	SE	M	Diarrhea	More liquid	SE	Same or more food	SE	M
Sex																			
Females	655	38.1	37.4	3.3	25.7	3.0	0.2	29.0	37.0	4.0	25.2	38.1	0.0	16.4	43.4	5.7	21.0	3.9	0.0
Males	631	44.0	32.7	3.4	24.7	2.6	1.3	33.3	34.6	3.8	23.9	44.0	1.3	19.9	39.2	5.3	22.5	3.8	0.7
Missing	0																		
Residence																			
Urban	1,023	41.3	34.2	2.6	26.3	2.2	1.0	31.9	35.1	3.1	26.4	41.3	0.9	17.7	39.2	4.4	22.9	3.1	0.5
Rural	233	39.5	36.0	5.9	19.1	4.6	0.0	27.8	36.8	7.9	14.6	39.5	0.0	19.3	42.8	9.2	17.0	5.2	0.0
Missing	29	43.0						29.8				43.0		24.0					
Income_Quintile																			
Q1(poorest)	292	43.5	37.6	4.3	26.0	4.0	1.1	34.1	34.4	5.3	25.4	43.5	0.9	21.9	38.9	7.1	24.8	5.4	0.0
Q2	268	45.3	35.2	4.8	23.0	4.0	1.4	35.3	35.9	5.1	24.0	45.3	1.1	16.9	39.9	7.8	23.5	6.2	0.0
Q3	239	38.3	34.2	5.3	26.0	4.3	0.9	28.1	43.0	6.7	28.5	38.3	1.3	16.2	39.8	8.8	25.1	7.4	2.2
Q4	239	37.0	34.7	5.3	22.2	4.6	0.0	27.4	32.5	6.1	28.2	37.0	0.0	19.0	41.9	8.1	17.8	6.2	0.0
Q5(richest)	208	39.3	29.6	6.0	27.7	5.8	0.0	29.3	31.7	7.5	15.2	39.3	0.0	14.0	40.7	11.4	9.6	5.5	0.0
Missing	39																		
Total	1,286	41.0	35.0	2.3	25.2	2.0	0.8	31.1	35.7	2.8	24.5	41.0	0.7	18.1	41.1	4.0	21.8	2.7	0.4

M = % Missing of Covered SE= Standard Error of % Covered

Child's Common Illness Indicators:

Total = Number of children under the age of 5 years at the time of the interview.

"Fever"/"Cough"/"Diarrhea" = % of children under the age of 5 with reported episode of (cough, fever, or diarrhea) in the last 3 months.

"More Liquid" = % of children under 5 with either fever, cough, or diarrhea in the last 3 months, that were given more liquids to drink during their illness.

"Same or More Food" = % of children under 5 with either fever, cough, or diarrhea in the last 3 months, that were given the same amount or more food to eat during their illness.

5.06 Child's Health - Danger Signs

	Children under 5	Fast Breath	Seeking Treatment						Vomit	Seeking Treatment						No Drink or Eat	Seeking Treatment					
			Yes	SE	Public	Private	Trad	M		Yes	SE	Public	Private	Trad	M		Yes	SE	Public	Private	Trad	M
Sex																						
Females	655	0.1	78.8	5.0	57.4	37.2	5.4	0.0	13.1	84.0	4.3	70.3	25.9	3.8	0.0	13.9	79.2	4.8	67.1	29.1	3.8	0.0
Males	631	0.2	75.9	4.3	71.3	26.6	2.1	0.0	16.3	74.3	4.8	62.2	36.1	1.2	0.0	18.0	79.2	4.4	73.3	22.7	2.7	0.0
Missing	0																					
Residence																						
Urban	1,023	0.2	77.7	3.4	62.0	34.9	3.1	0.0	14.6	81.6	3.5	63.1	35.3	1.6	0.0	15.6	79.3	3.5	70.0	27.4	2.0	0.0
Rural	233	0.2	74.9	9.4	78.9	15.9	5.2	0.0	15.4	66.2	7.2	77.6	13.5	7.6	0.0	17.5	77.6	9.5	69.4	21.3	8.3	0.0
Missing	29	0.1							11.0							14.9						
Income_Quintile																						
Q1(poorest)	292	0.2	66.9	7.1	90.0	5.9	4.1	0.0	17.9	65.6	7.0	82.5	12.3	5.3	0.0	18.7	69.9	8.4	77.7	13.1	6.9	0.0
Q2	268	0.2	78.1	6.4	76.9	20.6	2.5	0.0	15.4	77.6	7.1	79.4	14.7	5.9	0.0	18.4	80.6	5.7	72.1	21.6	6.2	0.0
Q3	239	0.2	79.9	6.1	68.2	25.3	6.5	0.0	13.5	83.9	8.0	80.3	18.5	0.0	0.0	16.9	81.5	7.2	82.6	16.5	0.0	0.0
Q4	239	0.1	78.0	7.8	57.4	42.6	0.0	0.0	12.1	87.1	6.9	53.4	46.6	0.0	0.0	14.1	75.6	7.8	66.9	33.1	0.0	0.0
Q5(richest)	208	0.2	88.4	5.3	19.1	76.8	4.0	0.0	13.3	87.0	6.8	20.6	79.4	0.0	0.0	8.5	98.2	1.9	29.7	70.3	0.0	0.0
Missing	39																					
Total	1,286	0.2	77.1	3.3	65.5	31.0	3.4	0.0	14.7	78.7	3.2	66.1	31.2	2.5	0.0	15.9	79.2	3.3	70.6	25.5	3.2	0.0

M = % Missing of those Seeking Treatment SE= Standard Error of % Seeking Treatment

Child Danger Signs Indicators:

Total = Number of children under the age of 5 years at the time of the interview.

"Fast Breathing"/"Vomiting"/"No Drink or Eat" = % of children under the age of 5 with reported episodes of (fast breathing, vomiting, or no eating or drinking) in the last 3 months.

"Seeking Treatment" = % of children under 5 with episodes of fast breathing, vomiting, or no eating or drinking in the last 3 months that were taken for care/treatment at either a private health facility, public health facility, or traditional healer (other).

Note: large number of missings are usually due to not having information type of facility (either a no answer or a don't know answer).

5.07 Vaccinations Meeting WHO Timeline Recommendations for Children 12 to 23 months of Age with Vaccination Card

	Children 12-23 months with card	DPT 3 Immunization			Measles		
		%Cov	SE	M	%Cov	SE	M
Sex							
Females	142	64.9	5.0	0.0	62.8	5.0	0.0
Males	133	61.3	4.5	0.0	53.3	4.8	0.0
Missing	0						
Residence							
Urban	216	64.4	3.7	0.0	58.1	3.8	0.0
Rural	53	58.5	8.2	0.0	57.4	8.3	0.0
Missing	6						
Income Quintile							
Q1(poorest)	66	66.4	6.8	0.0	60.0	6.9	0.0
Q2	53	51.3	7.9	0.0	53.0	8.4	0.0
Q3	49	79.6	5.9	0.0	74.5	6.4	0.0
Q4	47	66.6	8.4	0.0	56.0	8.4	0.0
Q5(richest)	51	52.6	8.3	0.0	46.0	8.1	0.0
Missing	9						
Total	276	63.2	3.4	0.0	58.2	3.4	0.0

M = % Missing of Covered SE= Standard Error of % Covered

Vaccinations Meeting WHO Timeline for Children 12 - 23 months Indicators:

Total = Children 12 - 23 months with a vaccination card seen by the interviewer (does not include children less than 12 months to account for censored observations).

"DPT 3" = % of children 12 - 23 months with a vaccination card seen by the interviewer who received 3 inoculations of DTP not sooner than 6, 10 and 14 weeks respectively and before 12 months of age, and that was verified by the interviewer as being recorded on the card.

"Measles" = % of children 12 - 23 months with a vaccination card seen by the interviewer who received who received 1 inoculation of measles not sooner than 8 months of age and before 12 months of age.

5.08 Vaccination Status of Children 12-23 Months

	Children 12-23 months	Card seen			DPT 3 Immunization							Measles						
		Seen	SE	M	Total		Card		No Card		M	Total		Card		No Card		M
					%Cov	SE	%Cov	SE	%Cov	SE		%Cov	SE	%Cov	SE	%Cov	SE	
Sex																		
Females	158	90.0	3.0	0.0	71.0	4.5	96.2	2.4	3.8	2.4	22.1	71.8	4.3	90.7	3.5	9.3	3.5	19.8
Males	144	92.5	2.6	0.0	70.9	4.3	97.1	1.7	2.9	1.7	24.5	66.6	4.2	94.3	2.5	5.7	2.5	22.1
Missing	0																	
Residence																		
Urban	241	89.7	2.4	0.0	69.0	3.4	95.7	1.9	4.3	1.9	25.6	69.3	3.5	90.5	2.7	9.5	2.7	22.6
Rural	54	97.6	1.9	0.0	80.4	6.0	100.0	0.0	0.0	0.0	12.3	69.8	7.3	100.0	0.0	0.0	0.0	12.3
Missing	7																	
Income_Quintile																		
Q1(poorest)	72	91.7	3.4	0.0	74.3	5.9	100.0	0.0	0.0	0.0	17.3	72.2	6.3	91.7	4.0	8.3	4.0	12.8
Q2	60	88.8	4.7	0.0	66.4	7.1	94.6	4.4	5.4	4.4	23.7	69.7	6.7	86.2	6.3	13.8	6.3	21.6
Q3	54	91.5	4.3	0.0	85.0	5.4	98.1	1.9	1.9	1.9	15.0	81.8	5.6	96.2	2.7	3.8	2.7	13.5
Q4	56	84.2	6.3	0.0	68.1	7.8	89.0	6.3	11.0	6.3	23.0	67.6	7.6	88.9	6.4	11.1	6.4	23.0
Q5(richest)	51	100.0	0.0	0.0	59.5	8.0	100.0	0.0	0.0	0.0	40.5	54.5	8.9	100.0	0.0	0.0	0.0	36.8
Missing	9																	
Total	302	91.2	2.0	0.0	70.9	3.0	96.6	1.5	3.4	1.5	23.3	69.3	3.1	92.4	2.2	7.6	2.2	20.9

M = % Missing (% without adequate information to estimate Total DPT3 or Measles Coverage)

SE= Standard Error of % Total, DPT3 or Measles Coverage

Explanation of Indicators for Vaccination Status of Children 12 - 23 Months:

"Card Seen" = % of children 12 - 23 months of age who had a vaccination card seen by the interviewer.

"DPT 3 Immunization": does not account for WHO timeline recommendations.

"Total" = % of all children 12 - 23 months of age with DPT3 vaccination either verified by card or by recall of respondent.

"Card" = % of all DPT3 vaccinations among children 12-23 months that were verified by card only.

"No Card" = % of all DPT3 vaccinations among children 12-23 months that were based on recall of the respondent only.

"Measles": does not account for WHO timeline recommendations.

"Total" = % of all children 12 - 23 months of age with measles vaccination either verified by card or by recall of respondent.

"Card" = % of all Measles vaccinations among children 12-23 months that were verified by card only.

"No Card" = % of all Measles vaccinations among children 12-23 months that were based on recall of the respondent only.

5.09 Women's Cancer Screening

	Total Females	Percent Females 18+	PAP Smear	SE	M	Percent Females 40+	Mammography / Breast Exam	SE	M
Residence									
Urban	2,108	94.6	67.0	1.4	2.4	40.2	50.4	2.0	0.7
Rural	421	92.4	53.5	3.1	3.2	33.0	28.8	5.0	3.9
Missing	48								
Income_Quintile									
Q1(poorest)	439	92.4	50.5	2.8	4.0	33.3	21.6	4.0	1.8
Q2	452	94.6	56.3	2.5	3.8	35.5	26.4	3.6	3.2
Q3	505	93.6	62.8	2.5	2.7	37.7	37.2	3.8	0.5
Q4	525	93.3	68.5	2.3	1.6	40.9	57.0	3.6	0.3
Q5(richest)	584	96.8	80.0	2.0	1.4	45.3	73.6	3.1	0.6
Missing	72								
Age									
18-29	848	32.9	52.3	2.0	2.3				
30-39	576	22.3	77.6	1.9	3.3				
40-49	471	18.3	74.8	2.3	1.8	18.3	45.2	2.7	1.2
50-59	336	13.0	68.1	2.7	2.7	13.0	53.7	2.9	1.0
60-69	196	7.6	51.4	3.7	3.2	7.6	40.5	3.5	1.0
70+	151	5.9		0.0		5.9	0.0	0.0	
Missing	0								
Total	2,577	94.1	64.8	1.2	2.6	38.9	47.1	1.9	1.1

M = % Missing of those with Pap Smear/Mammography SE= Standard Error of % with Pap Smear/Mammography

***Note: Values in the age row under the "Females 18 plus" and "Females 40 plus" columns are column percent values.

Women's Cancer Screening Indicators:

"Papsmear need"= % of all female respondents aged 18-69

"Papsmear" coverage = % of those female respondents aged 18-69 who self-reported receiving a pap smear test during pelvic examination in the last 3 years.

"Mammography need" = % of all female respondents aged 40-69

"Mammography" coverage = % of those female respondents aged 40-69 who self-reported receiving a mammography test or breast examination in the last 3 years.

****In several countries women above age 69 were asked the cancer screening questions, and for this reason they are included in the table. For countries that did not ask this questions of women above age 69, these values are expected to be missing.

5.10 Oral Health and Injuries

	Oral Health Problems					Road Traffic Accidents				Injury			
	Total	Need	Coverage	SE	M	Need	Coverage	SE	M	Need	Coverage	SE	M
Sex													
Female	2,577	35.1	73.3	1.8	0.1	1.4	34.1	8.7	5.2	7.3	21.1	3.1	8.7
Male	2,423	36.8	68.9	1.8	0.2	5.5	44.0	5.3	5.9	9.0	25.9	3.6	8.1
Missing	0												
Residence													
Urban	4,067	36.0	72.8	1.6	0.2	3.5	42.2	4.8	6.8	8.3	24.1	2.8	9.4
Rural	833	36.3	63.4	3.8	0.0	2.5	39.8	15.0	0.0	7.8	20.7	5.3	3.5
Missing	100												
Income_Quintile													
Q1(poorest)	860	34.3	51.8	3.7	0.0	2.6	35.0	13.3	0.0	10.4	14.1	3.4	2.3
Q2	888	33.1	61.1	3.1	0.3	3.8	33.9	9.0	6.9	8.3	22.8	5.5	5.9
Q3	954	35.1	75.2	2.8	0.0	3.8	33.7	8.2	2.1	8.6	35.2	6.4	6.1
Q4	1,050	37.1	73.2	2.8	0.0	3.5	69.8	9.1	0.0	6.6	25.9	6.1	12.1
Q5(richest)	1,113	40.1	86.3	2.0	0.3	2.8	28.0	9.4	20.8	7.7	21.7	5.2	16.5
Missing	135												
Age													
18-29	1,697	40.6	75.0	2.0	0.2	5.7	8.4	6.8	8.4	10.8	10.5	3.9	10.5
30-44	1,654	38.4	69.5	2.3	0.0	3.3	1.5	6.8	1.5	5.7	5.2	5.5	5.2
45-59	1,030	32.2	70.7	2.7	0.0	1.0	7.0	14.0	7.0	7.8	4.6	4.6	4.6
60-69	362	26.6	62.4	5.2	0.0	1.3	0.0	21.9	0.0	7.0	11.1	5.0	11.1
70-79	193	20.5	59.5	7.2	1.9	0.3	0.0	0.0	0.0	7.4	9.5	6.6	9.5
80+	65	9.3	51.0	18.0	0.0	2.4	0.0	35.4	0.0	14.7	21.2	15.5	21.2
Missing	0												
Total	5,000	35.9	71.2	1.4	0.1	3.4	41.9	4.5	5.8	8.1	23.7	2.5	8.4

M = % Missing of % Covered SE= Standard Error of % Covered

Indicators:

Oral Health:

"Need" = % of all respondents indicating any problems in the last 12 months with their mouth and/or teeth.

"Coverage" = % of respondents reporting problems with their mouth and teeth who indicated receiving dental or medical care in last 12 months.

Road Traffic Accident:

"Need" = % of all respondents indicating having suffered bodily injury from a road traffic accident in last 12 months.

"Coverage" = % of respondents reporting having suffered bodily injury from a road traffic accident in last 12 months who indicating having received treatment for their injuries on-site or at health facility within 1 hour of accident .

Injuries from Non-traffic Accidents:

"Need" = % of all respondents indicating having suffered bodily injury due to non-traffic accidents in last 12 months.

"Coverage" = % of respondents reporting having suffered bodily injury due to non-traffic accidents in last 12 months who indicating having received treatment for injuries on-site or at health facility within 1 hour of accident

5.11 Self Reported Non-Communicable Conditions

	Angina					Osteo-Arthritis				Asthma				Diabetes			
	Total	Need	Coverage	SE	M	Need	Coverage	SE	M	Need	Coverage	SE	M	Need	Coverage	SE	M
Sex																	
Female	2,577	6.2	50.0	4.5	0.2	12.1	42.5	3.1	0.3	12.6	28.6	2.7	0.3	6.5	77.6	3.2	0.5
Male	2,423	6.1	40.3	4.5	0.0	6.9	33.8	4.1	0.0	11.5	24.0	2.8	0.0	4.3	74.2	4.5	1.6
Missing	0																
Residence																	
Urban	4,067	6.2	47.2	3.7	0.1	9.8	41.3	2.9	0.2	12.5	26.2	2.2	0.2	6.0	76.0	2.9	0.3
Rural	833	5.7	33.2	7.2	0.0	8.9	30.1	5.8	0.0	9.8	24.5	6.3	0.0	3.1	82.9	9.2	2.1
Missing	100																
Income_Quintile																	
Q1(poorest)	860	6.2	35.1	6.2	0.0	9.9	28.5	5.1	0.9	8.8	24.4	4.9	0.3	3.6	69.7	7.8	1.7
Q2	888	7.0	39.8	6.1	0.6	10.4	33.8	5.5	0.0	12.5	26.9	4.6	0.0	5.7	71.0	5.8	0.0
Q3	954	6.7	58.8	7.2	0.0	10.1	38.8	5.1	0.0	11.1	25.3	4.7	0.5	5.7	69.0	7.1	0.0
Q4	1,050	6.7	45.6	7.7	0.0	10.0	52.2	5.5	0.0	12.7	23.1	3.7	0.0	6.7	83.5	4.0	1.2
Q5(richest)	1,113	4.3	45.8	8.4	0.0	8.0	42.1	5.5	0.0	14.5	29.5	4.7	0.0	5.4	84.4	5.7	0.0
Missing	135																
Age																	
18-29	1,697	1.8	11.5	6.5	0.0	2.7	24.8	8.1	0.0	13.1	28.7	3.9	0.0	0.8	28.7	11.3	14.3
30-44	1,654	5.1	25.1	4.8	0.0	6.9	35.4	5.0	0.7	11.7	22.0	3.1	0.4	2.5	60.0	8.8	0.0
45-59	1,030	10.2	56.7	5.5	0.0	15.4	46.1	4.4	0.0	9.1	17.6	3.8	0.0	10.6	81.0	3.9	0.0
60-69	362	12.5	61.9	7.3	0.0	25.5	37.4	5.0	0.0	13.6	35.9	6.9	0.0	17.0	88.5	3.7	0.0
70-79	193	16.8	62.9	7.9	1.2	24.4	46.0	6.8	0.0	17.9	42.4	7.4	0.0	21.0	81.4	5.7	1.3
80+	65	17.3	65.6	14.5	0.0	32.1	36.6	12.7	0.0	17.6	43.7	15.9	0.0	8.4	53.1	23.7	0.0
Missing	0																
Total	5,000	6.2	45.4	3.2	0.1	9.6	39.4	2.6	0.2	12.1	26.5	2.1	0.1	5.4	76.3	2.8	0.9

M = % Missing for Covered

SE= Standard Error of %Covered

Self Reported Non-Communicable Conditions Indicators:

"Need" = % of total respondents indicating having received a diagnosis of the condition (angina, arthritis, asthma, diabetes) in last 12 months.

"Coverage" = % of respondents with a self-reported condition (angina, arthritis, asthma, diabetes) indicating they have received treatment or screening for the condition in the last 2 weeks.

5.12 Mental Health Conditions

	Total	Depression				Schizophrenia			
		Need	Coverage	SE	M	Need	Coverage	SE	M
Sex									
Female	2,577	25.0	35.7	2.1	0.5	2.0	57.7	7.3	0.7
Male	2,423	12.3	26.2	3.1	0.5	1.1	47.2	9.8	3.1
Missing	0								
Residence									
Urban	4,067	19.8	32.2	1.9	0.5	1.6	53.2	6.4	1.9
Rural	833	14.8	35.3	5.9	0.3	1.6	54.4	16.4	0.0
Missing	100								
Income Quintile									
Q1(poorest)	860	13.5	21.0	3.9	0.3	1.6	28.9	12.5	0.0
Q2	888	19.5	33.1	3.5	1.0	2.5	56.2	11.2	1.7
Q3	954	18.4	33.4	3.9	0.5	1.9	61.5	12.6	0.0
Q4	1,050	19.0	35.6	3.6	0.0	1.4	55.6	12.5	0.0
Q5(richest)	1,113	23.0	35.0	3.5	0.6	0.6	72.3	15.9	11.4
Missing	135								
Age									
18-29	1,697	14.4	20.2	3.1	0.9	0.7	62.9	15.9	0.0
30-44	1,654	18.4	30.8	2.8	0.5	1.6	42.8	11.0	0.0
45-59	1,030	24.7	44.8	3.5	0.3	2.1	55.6	10.6	3.7
60-69	362	24.6	40.6	5.6	0.0	4.0	70.1	14.5	0.0
70-79	193	20.6	34.1	6.2	0.9	1.5	36.6	21.6	13.3
80+	65	16.1	16.0	9.1	0.0	0.0	0.0	0.0	0.0
Missing	0								
Total	5,000	18.8	32.7	1.8	0.5	1.6	54.2		1.5

M = % Missing for Covered

SE= Standard Error of %Covered

Mental Health Conditions Indicators:

"Need" = % of total respondents indicating having received a diagnosis of the condition (depression, schizophrenia) in last 12 months.

"Coverage" = % of respondents with a self-reported condition (depression, schizophrenia) indicating they have received treatment or screening for the condition in the last 2 weeks.

5.13 Cataracts

		Cataracts			
	Total 60+	Need	Coverage	SE	M
Sex					
Female	347	25.6	33.4	4.9	0.0
Male	273	14.1	52.2	8.2	0.0
Missing	0				
Residence					
Urban	503	21.1	42.3	4.8	0.0
Rural	103	17.2	21.2	8.0	0.0
Missing	14				
Income_Quintile					
Q1(poorest)	108	20.8	16.3	6.1	0.0
Q2	120	16.4	37.4	9.3	0.0
Q3	131	24.8	52.0	8.6	0.0
Q4	132	21.5	40.0	8.9	0.0
Q5(richest)	110	16.0	42.4	13.8	0.0
Missing	19				
Age					
60-69	362	14.1	29.5	6.2	0.0
70-79	193	28.4	50.7	6.1	0.0
80+	65	32.6	32.0	10.3	0.0
Missing	0				
Total	620	20.5	39.1	4.3	0.0

M = % Missing of Covered SE= Standard Error of %Covered

Cataracts Indicators:

Total = Number of respondents 60 years of age or more.

"Need" = % in need (respondents 60 years of age or more with self-reported diagnosis of cataracts in the last 5 years).

"Coverage" = % respondents 60 years of age or more with self-reported diagnosis of cataracts having indicated receiving eye surgery to remove cataracts in the last 5 years)

6.01 In general, rate your health today - q2000

	Very Good	SE	Good	SE	Moderate	SE	Bad	SE	Very Bad	SE	Missing	SE	N
Gender													
Male	20.0	1.1	43.1	1.3	30.3	1.2	5.2	0.6	1.5	0.3	0.0	0.0	2,423
Female	11.8	0.8	37.2	1.1	40.9	1.0	7.2	0.6	2.8	0.4	0.1	0.1	2,577
M	0.0	0.0	0.0	0.0	0.0	0.0	0.0	0.0	0.0	0.0	0.0	0.0	
Residence													
Urban	16.9	0.8	41.0	0.9	34.2	1.0	5.7	0.5	2.1	0.3	0.1	0.1	4,067
Rural	10.3	1.6	35.9	2.1	42.7	2.0	8.2	1.2	2.8	0.6	0.0	0.0	833
M	14.0	4.2	36.3	3.3	38.9	4.2	9.8	3.3	1.0	1.0	0.0	0.0	100
Income													
Q1(poorest)	9.4	1.3	33.4	2.0	43.4	1.9	11.0	1.2	2.9	0.6	0.0	0.0	860
Q2	11.1	1.2	37.0	1.9	39.9	1.9	8.9	1.0	3.2	0.6	0.0	0.0	888
Q3	14.1	1.3	38.4	1.7	38.6	1.7	5.9	0.9	3.0	0.7	0.0	0.0	954
Q4	19.1	1.6	39.9	2.0	34.5	1.8	5.2	0.7	1.1	0.5	0.2	0.1	1,050
Q5(richest)	22.7	1.7	49.7	1.9	24.7	1.8	1.5	0.4	1.3	0.5	0.2	0.2	1,113
M	15.2	3.6	36.1	3.3	40.3	4.1	7.6	2.5	0.8	0.7	0.0	0.0	135
Age													
18-29	22.5	1.4	47.7	1.6	25.9	1.5	3.2	0.6	0.5	0.2	0.2	0.1	1,697
30-44	15.9	1.1	43.7	1.4	34.5	1.4	4.2	0.5	1.7	0.4	0.0	0.0	1,654
45-59	9.9	1.1	33.1	1.7	44.3	1.7	8.7	1.0	3.9	0.7	0.0	0.0	1,030
60-69	7.6	1.3	19.7	2.1	54.2	2.7	13.2	2.1	5.3	1.2	0.0	0.0	362
70-79	4.6	1.3	23.0	2.6	51.6	3.1	15.7	2.3	5.1	1.6	0.0	0.0	193
80+	5.5	3.3	23.1	5.3	36.4	5.8	29.9	5.6	5.1	3.3	0.0	0.0	65
M	0.0	0.0	0.0	0.0	0.0	0.0	0.0	0.0	0.0	0.0	0.0	0.0	
All	15.7	0.7	40.1	0.8	35.7	0.9	6.2	0.4	2.2	0.2	0.1	0.0	5,000

6.02 Difficulty with 'work and household activities' in last 30 days - q2001

	None	SE	Mild	SE	Moderate	SE	Sever	SE	Extreme/ Cannot do	SE	Missing	SE	N
Gender													
Male	69.3	1.3	9.7	0.8	12.9	0.9	5.8	0.6	2.2	0.3	0.2	0.1	2,423
Female	58.2	1.2	11.7	0.7	18.6	0.8	7.6	0.5	3.8	0.5	0.1	0.0	2,577
M	0.0	0.0	0.0	0.0	0.0	0.0	0.0	0.0	0.0	0.0	0.0	0.0	
Residence													
Urban	64.6	1.0	10.7	0.6	15.5	0.7	6.3	0.4	2.8	0.3	0.1	0.0	4,067
Rural	58.4	2.9	10.8	1.5	17.8	1.7	9.1	1.1	3.8	0.8	0.1	0.1	833
M	64.4	3.6	14.0	2.3	13.1	2.6	4.2	2.0	4.3	3.3	0.0	0.0	100
Income													
Q1(poorest)	55.4	2.3	13.1	1.2	16.2	1.4	11.0	1.1	4.1	0.7	0.3	0.2	860
Q2	60.8	1.7	9.4	1.0	17.5	1.3	7.5	0.9	4.8	0.8	0.1	0.1	888
Q3	62.0	2.0	10.9	1.2	17.1	1.3	6.8	0.9	3.1	0.7	0.2	0.1	954
Q4	67.2	1.8	9.8	1.2	15.3	1.2	5.7	0.8	1.9	0.4	0.1	0.1	1,050
Q5(richest)	70.2	1.8	10.3	1.0	13.8	1.4	3.9	0.6	1.7	0.5	0.1	0.1	1,113
M	62.9	3.7	14.7	2.3	14.5	2.7	4.7	1.7	3.2	2.5	0.0	0.0	135
Age													
18-29	74.5	1.4	10.6	0.9	11.5	0.9	2.8	0.5	0.5	0.2	0.1	0.1	1,697
30-44	65.7	1.4	11.2	0.9	14.8	1.0	5.4	0.6	2.9	0.5	0.1	0.1	1,654
45-59	54.8	1.8	11.0	1.1	19.5	1.3	10.9	1.0	3.7	0.6	0.1	0.1	1,030
60-69	45.4	2.8	9.9	1.4	24.8	2.4	13.2	1.9	6.4	1.3	0.2	0.2	362
70-79	38.9	3.4	9.1	1.8	26.2	2.8	14.7	2.4	9.5	2.1	1.6	0.8	193
80+	36.2	5.6	9.2	4.0	16.4	4.4	15.0	4.5	23.2	5.3	0.0	0.0	65
M	0.0	0.0	0.0	0.0	0.0	0.0	0.0	0.0	0.0	0.0	0.0	0.0	
All	63.6	0.9	10.7	0.5	15.8	0.6	6.7	0.4	3.0	0.3	0.1	0.0	5,000

6.03 Difficulty with 'moving around' in last 30 days - q2010

	None	SE	Mild	SE	Moderate	SE	Sever	SE	Extreme/ Cannot do	SE	Missing	SE	N
Gender													
Male	82.0	1.0	6.6	0.6	7.5	0.6	3.2	0.4	0.7	0.2	0.0	0.0	2,423
Female	74.1	1.0	8.8	0.6	10.4	0.7	5.3	0.5	1.3	0.2	0.0	0.0	2,577
M	0.0	0.0	0.0	0.0	0.0	0.0	0.0	0.0	0.0	0.0	0.0	0.0	
Residence													
Urban	78.6	0.8	8.0	0.5	8.5	0.5	3.9	0.3	1.0	0.2	0.0	0.0	4,067
Rural	74.2	2.2	6.6	1.0	12.0	1.3	6.1	1.2	1.1	0.4	0.1	0.1	833
M	82.9	2.5	7.2	1.2	4.3	1.1	4.3	1.3	1.3	0.8	0.0	0.0	100
Income													
Q1(poorest)	75.1	1.9	6.5	0.9	10.6	1.1	6.4	1.1	1.3	0.5	0.1	0.1	860
Q2	73.6	1.6	7.5	0.9	10.8	1.1	6.4	0.9	1.7	0.4	0.0	0.0	888
Q3	75.4	1.6	8.1	1.0	12.0	1.2	3.5	0.6	0.9	0.3	0.0	0.0	954
Q4	80.5	1.4	7.0	0.9	8.3	1.1	3.3	0.6	0.8	0.3	0.1	0.1	1,050
Q5(richest)	83.1	1.5	9.1	1.1	4.8	0.8	2.6	0.6	0.4	0.2	0.0	0.0	1,113
M	80.7	2.9	8.8	1.9	5.9	1.6	3.7	1.1	1.0	0.6	0.0	0.0	135
Age													
18-29	87.4	1.1	6.0	0.7	5.0	0.7	1.5	0.4	0.1	0.1	0.1	0.1	1,697
30-44	83.7	1.0	6.0	0.6	7.4	0.7	2.6	0.4	0.4	0.1	0.0	0.0	1,654
45-59	69.8	1.7	11.3	1.2	11.7	1.2	5.5	0.8	1.7	0.4	0.0	0.0	1,030
60-69	55.3	2.7	12.4	1.8	18.0	2.2	12.2	1.8	2.2	0.7	0.0	0.0	362
70-79	45.6	3.2	11.4	2.0	23.9	3.0	12.7	2.2	6.0	1.6	0.4	0.4	193
80+	36.4	5.8	6.2	2.8	19.5	4.8	30.1	5.9	7.8	4.4	0.0	0.0	65
M	0.0	0.0	0.0	0.0	0.0	0.0	0.0	0.0	0.0	0.0	0.0	0.0	
All	78.0	0.8	7.7	0.4	9.0	0.5	4.3	0.3	1.0	0.2	0.0	0.0	5,000

6.04 Difficulty with 'vigorous activities' in last 30 days - q2011

	None	SE	Mild	SE	Moderate	SE	Sever	SE	Extreme/ Cannot do	SE	Missing	SE	N
Gender													
Male	58.3	1.3	8.2	0.6	10.3	0.8	5.9	0.6	10.3	0.8	6.9	0.9	2,423
Female	37.6	1.3	8.6	0.6	12.1	0.8	9.0	0.6	19.0	1.2	13.8	1.7	2,577
M	0.0	0.0	0.0	0.0	0.0	0.0	0.0	0.0	0.0	0.0	0.0	0.0	
Residence													
Urban	47.2	1.2	8.4	0.5	11.1	0.6	7.4	0.5	14.1	0.9	11.9	1.5	4,067
Rural	48.5	2.9	8.4	1.0	12.0	1.4	8.2	1.2	18.5	2.2	4.5	1.6	833
M	59.6	2.9	8.4	2.9	12.0	3.0	7.8	1.8	12.1	3.4	0.0	0.0	100
Income													
Q1(poorest)	51.3	2.0	6.8	0.9	12.5	1.1	8.2	1.1	15.7	1.6	5.5	1.2	860
Q2	45.1	2.0	8.0	1.0	10.8	1.2	8.1	1.0	18.8	1.6	9.1	1.5	888
Q3	45.9	2.2	7.9	1.0	11.0	1.1	9.2	1.1	14.5	1.4	11.6	1.8	954
Q4	47.6	1.9	9.2	1.1	10.4	1.1	7.0	0.9	13.0	1.4	12.9	2.0	1,050
Q5(richest)	47.8	2.1	9.3	1.1	11.5	1.1	5.4	0.8	13.2	1.4	12.8	2.2	1,113
M	52.5	3.8	11.2	2.8	12.1	2.9	9.1	2.0	11.8	2.9	3.3	1.7	135
Age													
18-29	62.3	1.6	10.0	0.9	10.1	0.9	4.2	0.6	5.6	0.8	7.8	1.1	1,697
30-44	51.2	1.6	8.2	0.7	11.3	1.0	6.8	0.7	11.4	1.0	11.0	1.5	1,654
45-59	36.7	1.8	7.8	1.0	12.9	1.1	10.3	1.0	19.8	1.6	12.6	1.7	1,030
60-69	19.3	2.0	6.7	1.2	12.4	1.8	15.5	2.0	34.6	2.7	11.5	2.0	362
70-79	13.5	2.3	3.9	1.2	11.3	2.0	12.0	2.1	43.4	3.6	15.9	3.1	193
80+	8.4	3.4	3.8	2.4	4.7	2.5	11.7	3.8	63.8	5.7	7.6	3.8	65
M	0.0	0.0	0.0	0.0	0.0	0.0	0.0	0.0	0.0	0.0	0.0	0.0	
All	47.6	1.1	8.4	0.4	11.2	0.5	7.5	0.4	14.8	0.8	10.4	1.2	5,000

6.05 Difficulty with 'self-care' in last 30 days - q2020

	None	SE	Mild	SE	Moderate	SE	Sever	SE	Extreme/ Cannot do	SE	Missing	SE	N
Gender													
Male	93.5	0.6	2.6	0.4	2.1	0.3	1.0	0.2	0.7	0.2	0.0	0.0	2,423
Female	90.2	0.6	3.7	0.4	3.7	0.4	1.8	0.3	0.6	0.2	0.0	0.0	2,577
M	0.0	0.0	0.0	0.0	0.0	0.0	0.0	0.0	0.0	0.0	0.0	0.0	
Residence													
Urban	92.3	0.5	2.9	0.3	2.7	0.3	1.5	0.2	0.6	0.2	0.0	0.0	4,067
Rural	89.5	1.4	4.6	0.8	4.0	0.8	1.4	0.6	0.5	0.2	0.0	0.0	833
M	91.3	2.7	3.2	1.5	3.9	1.3	1.3	0.8	0.3	0.3	0.0	0.0	100
Income													
Q1(poorest)	88.0	1.3	4.3	0.7	4.8	0.8	2.0	0.6	1.0	0.4	0.0	0.0	860
Q2	89.4	1.1	4.1	0.7	3.4	0.6	1.9	0.4	1.2	0.5	0.0	0.0	888
Q3	91.4	1.0	3.6	0.6	2.8	0.6	1.8	0.5	0.4	0.2	0.0	0.0	954
Q4	94.2	0.7	1.8	0.4	2.5	0.5	1.3	0.4	0.2	0.1	0.1	0.1	1,050
Q5(richest)	94.8	0.8	2.6	0.6	1.5	0.4	0.6	0.2	0.6	0.3	0.0	0.0	1,113
M	92.1	2.3	2.9	1.2	3.8	1.3	0.9	0.6	0.3	0.2	0.0	0.0	135
Age													
18-29	96.2	0.6	1.6	0.4	1.4	0.4	0.5	0.2	0.3	0.2	0.1	0.1	1,697
30-44	94.4	0.6	2.2	0.4	2.0	0.4	1.2	0.2	0.3	0.1	0.0	0.0	1,654
45-59	88.7	1.1	3.8	0.6	5.0	0.7	1.8	0.5	0.7	0.3	0.0	0.0	1,030
60-69	83.8	2.0	8.4	1.6	4.9	1.0	1.5	0.6	1.5	0.8	0.0	0.0	362
70-79	73.9	2.8	9.0	1.8	7.0	1.6	7.5	1.7	2.7	1.2	0.0	0.0	193
80+	60.5	6.1	12.8	3.8	11.4	4.3	9.1	3.9	6.2	3.5	0.0	0.0	65
M	0.0	0.0	0.0	0.0	0.0	0.0	0.0	0.0	0.0	0.0	0.0	0.0	
All	91.8	0.4	3.2	0.3	2.9	0.2	1.4	0.2	0.6	0.1	0.0	0.0	5,000

6.06 Difficulty with 'taking care of and maintaining general appearance' in last 30 days - q2021

	None	SE	Mild	SE	Moderate	SE	Sever	SE	Extreme/ Cannot do	SE	Missing	SE	N
Gender													
Male	93.9	0.6	2.6	0.4	1.9	0.3	0.7	0.2	0.7	0.2	0.3	0.2	2,423
Female	89.8	0.7	4.5	0.5	3.7	0.4	1.4	0.2	0.6	0.2	0.0	0.0	2,577
M	0.0	0.0	0.0	0.0	0.0	0.0	0.0	0.0	0.0	0.0	0.0	0.0	
Residence													
Urban	92.5	0.5	3.2	0.3	2.5	0.3	1.0	0.2	0.6	0.1	0.2	0.1	4,067
Rural	88.4	1.5	5.6	1.1	4.1	0.8	1.0	0.4	0.7	0.3	0.1	0.1	833
M	90.3	2.7	4.0	1.4	4.8	1.7	0.9	0.6	0.0	0.0	0.0	0.0	100
Income													
Q1(poorest)	87.4	1.4	5.6	1.0	3.9	0.7	1.6	0.5	1.1	0.4	0.3	0.3	860
Q2	90.2	1.0	3.7	0.8	3.6	0.6	1.2	0.4	1.0	0.4	0.3	0.2	888
Q3	91.4	1.1	4.0	0.7	2.9	0.6	1.2	0.4	0.5	0.2	0.0	0.0	954
Q4	93.9	0.8	2.5	0.5	2.0	0.4	1.2	0.4	0.3	0.2	0.1	0.1	1,050
Q5(richest)	94.8	0.9	2.5	0.6	1.8	0.4	0.2	0.1	0.5	0.3	0.1	0.1	1,113
M	90.7	2.3	4.1	1.3	4.5	1.6	0.6	0.4	0.0	0.0	0.0	0.0	135
Age													
18-29	94.2	0.8	3.3	0.6	1.6	0.4	0.3	0.2	0.3	0.2	0.2	0.2	1,697
30-44	94.8	0.6	2.3	0.4	1.7	0.3	0.9	0.2	0.1	0.0	0.1	0.1	1,654
45-59	89.4	1.1	3.5	0.6	4.4	0.8	1.4	0.4	1.1	0.4	0.1	0.1	1,030
60-69	86.8	1.8	6.5	1.4	3.4	0.8	1.9	0.8	1.0	0.5	0.3	0.3	362
70-79	74.9	2.8	10.0	1.9	9.3	1.9	2.1	0.7	3.7	1.3	0.0	0.0	193
80+	65.1	6.0	8.7	3.3	12.9	5.1	7.5	3.4	5.7	3.5	0.0	0.0	65
M	0.0	0.0	0.0	0.0	0.0	0.0	0.0	0.0	0.0	0.0	0.0	0.0	
All	91.8	0.5	3.6	0.3	2.8	0.3	1.0	0.2	0.6	0.1	0.2	0.1	5,000

6.07 Amount of 'bodily aches or pains' in last 30 days - q2030

	None	SE	Mild	SE	Moderate	SE	Sever	SE	Extreme/ Cannot do	SE	Missing	SE	N
Gender													
Male	46.6	1.4	25.5	1.2	18.4	1.0	7.1	0.7	2.3	0.4	0.0	0.0	2,423
Female	31.2	1.1	25.6	0.9	24.3	0.8	14.1	0.8	4.9	0.5	0.0	0.0	2,577
M	0.0	0.0	0.0	0.0	0.0	0.0	0.0	0.0	0.0	0.0	0.0	0.0	
Residence													
Urban	38.6	1.0	25.6	0.8	21.6	0.8	10.8	0.6	3.4	0.3	0.0	0.0	4,067
Rural	38.6	2.5	25.8	1.9	19.9	1.6	10.9	1.4	4.8	0.8	0.0	0.0	833
M	41.6	4.2	22.8	3.4	26.3	2.8	6.9	2.1	2.4	1.2	0.0	0.0	100
Income													
Q1(poorest)	38.4	2.2	22.4	1.6	20.7	1.4	13.4	1.4	4.9	0.8	0.1	0.1	860
Q2	36.2	1.7	25.6	1.5	21.8	1.4	11.4	1.1	5.0	0.8	0.0	0.0	888
Q3	37.9	1.8	23.8	1.6	21.9	1.5	12.8	1.2	3.6	0.6	0.0	0.0	954
Q4	38.7	1.9	25.8	1.7	20.9	1.5	11.3	1.2	3.2	0.6	0.1	0.1	1,050
Q5(richest)	41.3	2.1	29.6	1.7	21.2	1.4	5.9	0.7	2.0	0.6	0.0	0.0	1,113
M	39.2	3.9	22.0	3.2	27.2	3.3	8.3	2.0	3.2	1.4	0.0	0.0	135
Age													
18-29	44.3	1.5	31.3	1.4	16.7	1.1	5.9	0.7	1.7	0.4	0.1	0.1	1,697
30-44	41.1	1.4	24.9	1.2	20.9	1.1	10.3	0.8	2.7	0.4	0.1	0.1	1,654
45-59	32.0	1.7	21.2	1.4	26.3	1.6	14.2	1.2	6.3	0.9	0.0	0.0	1,030
60-69	29.6	2.5	18.0	1.9	28.0	2.3	17.9	2.0	6.6	1.4	0.0	0.0	362
70-79	26.1	3.1	19.9	2.7	28.9	2.8	19.2	2.8	5.9	1.5	0.0	0.0	193
80+	20.0	5.0	18.6	4.3	22.8	5.1	25.6	5.8	13.0	4.9	0.0	0.0	65
M	0.0	0.0	0.0	0.0	0.0	0.0	0.0	0.0	0.0	0.0	0.0	0.0	
All	38.6	0.9	25.5	0.8	21.4	0.7	10.7	0.5	3.6	0.3	0.0	0.0	5,000

6.08 Amount of 'bodily discomfort' in last 30 days - q2031

	None	SE	Mild	SE	Moderate	SE	Sever	SE	Extreme/ Cannot do	SE	Missing	SE	N
Gender													
Male	65.5	1.2	16.8	1.0	11.5	0.8	4.6	0.5	1.4	0.3	0.1	0.1	2,423
Female	48.3	1.2	20.2	0.9	18.9	0.8	9.1	0.6	3.5	0.4	0.0	0.0	2,577
M	0.0	0.0	0.0	0.0	0.0	0.0	0.0	0.0	0.0	0.0	0.0	0.0	
Residence													
Urban	56.7	1.0	18.5	0.7	15.7	0.6	6.6	0.4	2.4	0.3	0.1	0.0	4,067
Rural	57.1	2.6	18.4	2.0	13.4	1.5	8.2	1.2	2.9	0.7	0.0	0.0	833
M	51.3	4.5	23.4	3.3	14.8	3.4	9.5	3.1	0.9	0.6	0.0	0.0	100
Income													
Q1(poorest)	55.7	2.2	15.9	1.7	14.8	1.4	10.2	1.2	3.4	0.8	0.0	0.0	860
Q2	54.2	1.8	18.0	1.4	16.4	1.2	7.7	0.9	3.7	0.7	0.0	0.0	888
Q3	56.3	1.7	16.8	1.3	18.0	1.4	6.9	0.9	2.0	0.5	0.0	0.0	954
Q4	57.1	1.8	18.4	1.4	14.5	1.2	7.1	1.0	2.5	0.6	0.2	0.2	1,050
Q5(richest)	59.7	1.8	21.9	1.5	13.5	1.1	3.5	0.6	1.4	0.5	0.1	0.1	1,113
M	53.1	4.1	24.7	3.4	14.0	3.1	7.5	2.4	0.7	0.4	0.0	0.0	135
Age													
18-29	65.6	1.5	19.5	1.3	10.3	0.9	3.4	0.5	1.2	0.3	0.1	0.1	1,697
30-44	57.6	1.4	19.2	1.0	14.9	0.8	6.2	0.7	2.1	0.4	0.0	0.0	1,654
45-59	48.6	2.0	17.0	1.2	20.0	1.4	10.3	1.0	3.9	0.7	0.2	0.2	1,030
60-69	43.0	2.7	16.3	2.0	23.4	2.4	13.0	1.9	4.2	1.1	0.0	0.0	362
70-79	42.7	3.3	19.0	2.4	23.2	2.8	11.4	2.1	3.7	1.2	0.0	0.0	193
80+	43.8	5.6	13.5	4.1	14.4	4.3	16.9	4.8	11.4	4.4	0.0	0.0	65
M	0.0	0.0	0.0	0.0	0.0	0.0	0.0	0.0	0.0	0.0	0.0	0.0	
All	56.6	0.9	18.5	0.7	15.3	0.6	6.9	0.4	2.5	0.3	0.1	0.0	5,000

6.09 Difficulty with 'concentrating or remembering things' in last 30 days - q2050

	None	SE	Mild	SE	Moderate	SE	Sever	SE	Extreme/ Cannot do	SE	Missing	SE	N
Gender													
Male	60.8	1.3	19.8	1.0	12.3	0.7	5.8	0.6	1.3	0.3	0.1	0.0	2,423
Female	47.4	1.2	21.9	0.9	18.1	0.8	10.2	0.6	2.3	0.3	0.1	0.1	2,577
M	0.0	0.0	0.0	0.0	0.0	0.0	0.0	0.0	0.0	0.0	0.0	0.0	
Residence													
Urban	54.6	1.0	21.1	0.8	14.8	0.6	7.5	0.5	1.8	0.2	0.1	0.0	4,067
Rural	49.9	2.0	19.8	1.2	18.0	1.8	10.5	1.2	1.7	0.5	0.1	0.1	833
M	58.9	3.8	19.7	2.6	10.8	2.1	9.1	2.6	1.5	0.9	0.0	0.0	100
Income													
Q1(poorest)	50.6	2.0	18.0	1.3	17.3	1.6	11.9	1.2	2.1	0.5	0.1	0.1	860
Q2	47.5	2.0	22.4	1.5	16.7	1.4	11.0	1.2	2.5	0.7	0.0	0.0	888
Q3	53.0	1.8	19.3	1.4	16.6	1.4	9.2	1.0	1.9	0.5	0.1	0.1	954
Q4	57.5	1.8	21.6	1.5	12.7	1.2	6.1	0.8	2.0	0.5	0.1	0.1	1,050
Q5(richest)	58.8	1.9	22.6	1.4	14.1	1.2	3.6	0.6	0.8	0.3	0.1	0.1	1,113
M	56.5	3.6	20.8	2.7	12.5	2.6	9.1	2.4	1.1	0.7	0.0	0.0	135
Age													
18-29	62.0	1.5	20.6	1.2	12.2	1.0	4.3	0.6	0.8	0.2	0.0	0.0	1,697
30-44	55.2	1.4	22.1	1.1	13.6	0.9	7.6	0.7	1.4	0.4	0.1	0.1	1,654
45-59	48.1	1.7	19.1	1.2	18.4	1.3	11.5	1.2	3.0	0.6	0.0	0.0	1,030
60-69	41.3	2.6	22.7	2.4	21.9	2.3	11.3	1.7	2.8	1.0	0.1	0.1	362
70-79	40.0	3.2	20.9	2.7	20.2	2.5	15.2	2.5	3.0	1.0	0.7	0.5	193
80+	14.0	3.8	17.1	5.0	34.7	6.9	25.9	5.3	8.3	4.0	0.0	0.0	65
M	0.0	0.0	0.0	0.0	0.0	0.0	0.0	0.0	0.0	0.0	0.0	0.0	
All	53.9	0.9	20.9	0.6	15.3	0.6	8.1	0.4	1.8	0.2	0.1	0.0	5,000

6.10 Difficulty with 'learning a new task' in last 30 days - q2051

	None	SE	Mild	SE	Moderate	SE	Sever	SE	Extreme/ Cannot do	SE	Missing	SE	N
Gender													
Male	76.7	1.1	10.1	0.8	8.1	0.7	3.5	0.4	1.5	0.3	0.2	0.1	2,423
Female	67.2	1.2	10.4	0.7	11.9	0.7	7.1	0.6	3.0	0.4	0.4	0.1	2,577
M	0.0	0.0	0.0	0.0	0.0	0.0	0.0	0.0	0.0	0.0	0.0	0.0	
Residence													
Urban	73.5	1.0	10.0	0.6	9.2	0.6	4.9	0.4	2.2	0.3	0.2	0.1	4,067
Rural	64.2	2.2	11.0	1.5	14.5	1.3	7.2	1.3	2.6	0.7	0.5	0.2	833
M	66.5	4.4	14.7	2.2	9.5	1.9	7.1	2.4	2.1	0.7	0.0	0.0	100
Income													
Q1(poorest)	63.0	1.7	9.2	1.0	14.4	1.3	9.7	1.3	3.2	0.6	0.4	0.2	860
Q2	63.4	1.8	14.0	1.4	11.9	1.2	6.9	0.9	3.6	0.7	0.3	0.1	888
Q3	69.6	1.9	10.9	1.2	10.3	1.1	5.8	0.8	3.1	0.6	0.3	0.2	954
Q4	78.2	1.6	9.3	1.1	7.6	0.9	3.0	0.5	1.6	0.4	0.3	0.2	1,050
Q5(richest)	82.1	1.6	8.0	1.0	6.9	1.0	2.5	0.6	0.4	0.2	0.1	0.1	1,113
M	64.5	4.2	14.4	2.2	13.6	2.8	5.9	1.9	1.5	0.5	0.0	0.0	135
Age													
18-29	80.5	1.3	9.5	0.9	7.3	0.8	1.9	0.4	0.6	0.2	0.1	0.0	1,697
30-44	75.0	1.3	10.1	0.9	9.4	0.8	3.6	0.6	1.5	0.4	0.3	0.2	1,654
45-59	65.2	1.8	10.7	1.0	11.6	1.1	8.5	1.0	3.7	0.6	0.3	0.2	1,030
60-69	55.5	2.8	12.8	1.8	15.8	1.8	12.5	1.9	3.1	1.2	0.4	0.3	362
70-79	46.9	3.5	11.8	2.1	17.0	2.5	14.4	2.7	8.5	1.9	1.5	0.7	193
80+	32.5	6.0	6.4	2.9	20.7	5.0	23.3	5.2	17.1	5.0	0.0	0.0	65
M	0.0	0.0	0.0	0.0	0.0	0.0	0.0	0.0	0.0	0.0	0.0	0.0	
All	71.8	0.9	10.3	0.6	10.1	0.5	5.4	0.4	2.2	0.2	0.3	0.1	5,000

6.11 Difficulty with 'personal relationships or participation in the community' in last 30 days - q2060

	None	SE	Mild	SE	Moderate	SE	Sever	SE	Extreme/ Cannot do	SE	Missing	SE	N
Gender													
Male	84.8	1.0	6.8	0.6	5.9	0.6	1.8	0.3	0.7	0.2	0.1	0.0	2,423
Female	81.2	0.8	7.6	0.6	6.8	0.5	2.8	0.4	1.5	0.3	0.1	0.0	2,577
M	0.0	0.0	0.0	0.0	0.0	0.0	0.0	0.0	0.0	0.0	0.0	0.0	
Residence													
Urban	83.4	0.7	6.9	0.5	6.2	0.4	2.2	0.3	1.2	0.2	0.1	0.0	4,067
Rural	80.1	1.9	8.5	1.1	7.8	1.0	2.6	0.7	0.9	0.4	0.1	0.1	833
M	85.4	4.0	9.0	2.2	2.7	1.2	3.0	1.3	0.0	0.0	0.0	0.0	100
Income													
Q1(poorest)	80.2	1.9	8.1	1.1	6.8	0.9	3.2	0.6	1.5	0.5	0.2	0.1	860
Q2	79.3	1.5	7.4	1.0	8.7	1.1	2.7	0.6	1.9	0.6	0.1	0.1	888
Q3	81.7	1.4	7.9	1.0	6.0	0.9	3.3	0.7	1.0	0.3	0.1	0.1	954
Q4	86.8	1.2	5.8	0.8	4.9	0.8	1.5	0.4	1.0	0.3	0.0	0.0	1,050
Q5(richest)	85.2	1.4	7.2	1.1	5.8	0.8	1.2	0.4	0.5	0.2	0.0	0.0	1,113
M	83.6	3.6	8.3	1.9	5.6	2.2	2.6	1.0	0.0	0.0	0.0	0.0	135
Age													
18-29	81.8	1.2	8.3	0.9	7.3	0.8	2.0	0.4	0.6	0.2	0.0	0.0	1,697
30-44	84.9	1.0	6.6	0.7	5.7	0.6	2.1	0.4	0.9	0.2	0.0	0.0	1,654
45-59	83.1	1.3	6.8	0.9	5.7	0.7	3.0	0.6	1.3	0.4	0.1	0.1	1,030
60-69	80.0	2.2	9.2	1.6	5.5	1.1	2.6	0.9	2.6	0.8	0.1	0.1	362
70-79	83.2	2.6	3.4	1.1	9.6	1.9	2.3	0.8	1.5	0.8	0.0	0.0	193
80+	74.5	5.4	6.8	2.8	5.8	3.4	4.3	2.5	7.6	3.8	1.0	1.0	65
M	0.0	0.0	0.0	0.0	0.0	0.0	0.0	0.0	0.0	0.0	0.0	0.0	
All	82.9	0.7	7.2	0.4	6.4	0.4	2.3	0.2	1.1	0.2	0.1	0.0	5,000

6.12 Difficulty with 'dealing with conflicts and tensions' in last 30 days - q2061

	None	SE	Mild	SE	Moderate	SE	Sever	SE	Extreme/ Cannot do	SE	Missing	SE	N
Gender													
Male	75.2	1.3	11.5	0.8	8.0	0.7	3.9	0.5	1.3	0.3	0.1	0.0	2,423
Female	65.2	1.2	12.1	0.8	12.8	0.7	6.8	0.6	2.9	0.4	0.2	0.1	2,577
M	0.0	0.0	0.0	0.0	0.0	0.0	0.0	0.0	0.0	0.0	0.0	0.0	
Residence													
Urban	70.0	1.1	11.7	0.7	10.3	0.6	5.6	0.5	2.3	0.3	0.1	0.1	4,067
Rural	69.6	2.8	12.9	1.8	11.2	1.5	4.9	1.0	1.4	0.5	0.1	0.1	833
M	75.3	4.9	8.2	3.3	10.8	3.7	3.2	1.3	2.5	1.6	0.0	0.0	100
Income													
Q1(poorest)	73.4	2.2	11.3	1.6	8.1	0.9	5.2	0.8	1.7	0.5	0.2	0.2	860
Q2	70.8	1.8	11.0	1.1	9.5	1.1	5.9	0.9	2.7	0.6	0.0	0.0	888
Q3	69.4	1.9	10.2	1.1	11.7	1.3	6.2	0.9	2.2	0.5	0.3	0.2	954
Q4	71.9	1.8	10.8	1.1	10.0	1.0	5.3	0.8	1.9	0.5	0.1	0.1	1,050
Q5(richest)	65.2	2.2	15.3	1.6	12.3	1.3	4.9	0.8	2.3	0.5	0.1	0.1	1,113
M	71.1	4.6	10.3	3.0	12.4	3.4	4.0	1.3	2.3	1.2	0.0	0.0	135
Age													
18-29	67.3	1.8	14.6	1.2	11.3	1.0	4.9	0.6	1.8	0.4	0.2	0.1	1,697
30-44	72.1	1.4	11.0	0.9	9.8	0.8	5.1	0.6	2.0	0.4	0.0	0.0	1,654
45-59	70.7	1.7	10.3	1.1	9.7	0.9	6.8	0.8	2.3	0.5	0.3	0.2	1,030
60-69	70.8	2.5	7.7	1.6	12.4	1.9	6.6	1.4	2.5	0.9	0.0	0.0	362
70-79	74.5	3.2	9.5	1.9	9.8	2.0	3.2	1.0	3.0	1.1	0.0	0.0	193
80+	60.3	6.0	14.9	4.2	9.1	3.9	6.4	2.9	7.5	3.8	1.7	1.7	65
M	0.0	0.0	0.0	0.0	0.0	0.0	0.0	0.0	0.0	0.0	0.0	0.0	
All	70.0	1.0	11.8	0.6	10.5	0.6	5.4	0.4	2.1	0.2	0.1	0.0	5,000

6.13 Difficulty with 'seeing and recognizing a person you know across the road (20m)' in last 30 days - q2071

	None	SE	Mild	SE	Moderate	SE	Sever	SE	Extreme/ Cannot do	SE	Missing	SE	N
Gender													
Male	85.6	0.8	5.9	0.5	4.2	0.5	2.6	0.4	1.4	0.3	0.2	0.1	2,423
Female	79.0	1.0	6.9	0.6	7.1	0.6	4.9	0.5	1.7	0.3	0.3	0.1	2,577
M	0.0	0.0	0.0	0.0	0.0	0.0	0.0	0.0	0.0	0.0	0.0	0.0	
Residence													
Urban	83.1	0.7	6.5	0.4	5.4	0.4	3.4	0.3	1.4	0.2	0.2	0.1	4,067
Rural	78.5	1.9	6.2	0.8	7.3	0.9	5.3	1.2	2.2	0.5	0.4	0.3	833
M	78.1	2.6	7.4	1.6	5.9	2.0	6.0	2.0	2.7	1.7	0.0	0.0	100
Income													
Q1(poorest)	76.9	1.7	5.5	0.7	7.8	0.9	7.3	1.2	2.0	0.5	0.6	0.3	860
Q2	78.0	1.5	6.5	0.9	7.4	0.9	4.9	0.8	3.1	0.6	0.2	0.1	888
Q3	82.6	1.5	6.6	0.9	6.2	0.9	2.6	0.6	1.6	0.5	0.4	0.2	954
Q4	84.6	1.3	6.8	0.9	4.2	0.6	3.4	0.6	0.8	0.3	0.2	0.2	1,050
Q5(richest)	87.6	1.2	6.5	0.9	3.8	0.6	1.3	0.3	0.8	0.3	0.1	0.1	1,113
M	78.3	2.7	6.9	1.6	5.9	1.8	6.9	2.0	2.0	1.3	0.0	0.0	135
Age													
18-29	88.9	1.0	5.0	0.7	3.5	0.6	1.5	0.4	0.9	0.3	0.1	0.1	1,697
30-44	87.2	0.9	5.1	0.7	4.0	0.5	2.6	0.4	0.7	0.3	0.4	0.2	1,654
45-59	76.8	1.5	8.1	0.9	8.0	1.0	4.5	0.7	2.2	0.5	0.4	0.2	1,030
60-69	66.0	2.5	11.5	1.6	11.9	1.6	8.3	1.4	1.9	0.6	0.3	0.3	362
70-79	53.5	3.5	10.1	2.1	14.8	2.2	14.4	2.2	7.3	1.7	0.0	0.0	193
80+	40.3	6.4	12.4	4.5	9.5	3.2	27.9	7.1	9.9	3.6	0.0	0.0	65
M	0.0	0.0	0.0	0.0	0.0	0.0	0.0	0.0	0.0	0.0	0.0	0.0	
All	82.2	0.7	6.4	0.4	5.7	0.4	3.8	0.3	1.6	0.2	0.3	0.1	5,000

6.14 Difficulty with 'seeing an object at arm's length or in reading' in last 30 days - q2072

	None	SE	Mild	SE	Moderate	SE	Sever	SE	Extreme/ Cannot do	SE	Missing	SE	N
Gender													
Male	80.6	0.9	8.5	0.6	5.7	0.5	3.5	0.4	1.4	0.3	0.1	0.1	2,423
Female	76.0	1.0	8.2	0.6	9.3	0.6	4.7	0.4	1.4	0.3	0.3	0.1	2,577
M	0.0	0.0	0.0	0.0	0.0	0.0	0.0	0.0	0.0	0.0	0.0	0.0	
Residence													
Urban	78.9	0.8	8.3	0.5	7.2	0.4	3.8	0.3	1.5	0.2	0.2	0.1	4,067
Rural	75.7	2.1	7.8	1.0	9.8	1.2	5.6	0.8	0.7	0.3	0.4	0.3	833
M	73.3	3.1	12.9	1.9	6.4	2.0	4.0	1.4	3.4	2.1	0.0	0.0	100
Income													
Q1(poorest)	72.2	1.7	10.0	1.0	9.3	1.0	6.8	0.9	1.1	0.3	0.6	0.4	860
Q2	74.2	1.7	9.1	1.1	9.3	1.2	4.7	0.7	2.7	0.7	0.0	0.0	888
Q3	76.8	1.7	8.3	0.9	7.4	0.9	5.6	0.8	1.6	0.5	0.4	0.2	954
Q4	81.1	1.5	7.7	0.9	6.9	0.8	3.0	0.6	1.1	0.4	0.2	0.2	1,050
Q5(richest)	85.1	1.3	7.0	0.9	5.8	0.8	1.3	0.4	0.8	0.4	0.1	0.1	1,113
M	75.7	2.9	10.4	1.7	6.7	1.9	4.7	1.6	2.5	1.6	0.0	0.0	135
Age													
18-29	90.9	0.9	4.5	0.7	3.1	0.5	1.1	0.3	0.2	0.1	0.1	0.1	1,697
30-44	80.9	1.1	8.7	0.7	6.2	0.6	3.2	0.5	0.5	0.2	0.4	0.2	1,654
45-59	63.8	1.7	12.3	1.1	12.5	1.1	8.2	0.9	2.9	0.7	0.2	0.2	1,030
60-69	62.5	2.7	10.6	1.6	14.3	2.0	8.8	1.4	3.6	1.2	0.3	0.3	362
70-79	63.5	3.3	13.4	2.2	14.1	2.4	5.1	1.3	4.0	1.6	0.0	0.0	193
80+	40.2	6.6	9.5	3.6	23.9	5.1	12.0	4.7	12.8	3.8	1.7	1.7	65
M	0.0	0.0	0.0	0.0	0.0	0.0	0.0	0.0	0.0	0.0	0.0	0.0	
All	78.3	0.7	8.4	0.4	7.6	0.4	4.1	0.3	1.4	0.2	0.3	0.1	5,000

6.15 Problem with 'sleeping' in last 30 days - q2080

	None	SE	Mild	SE	Moderate	SE	Sever	SE	Extreme/ Cannot do	SE	Missing	SE	N
Gender													
Male	65.3	1.3	13.0	0.8	12.8	0.8	6.4	0.6	2.4	0.4	0.1	0.1	2,423
Female	54.0	1.1	15.2	0.8	15.8	0.7	11.1	0.6	3.9	0.4	0.0	0.0	2,577
M	0.0	0.0	0.0	0.0	0.0	0.0	0.0	0.0	0.0	0.0	0.0	0.0	
Residence													
Urban	58.3	1.1	14.6	0.7	14.8	0.6	9.0	0.5	3.2	0.3	0.1	0.0	4,067
Rural	65.2	2.2	11.3	1.4	12.5	1.4	7.9	1.1	3.1	0.6	0.0	0.0	833
M	60.9	4.7	14.5	3.2	13.0	1.9	9.5	2.4	2.0	1.0	0.0	0.0	100
Income													
Q1(poorest)	62.6	1.7	11.1	1.0	13.5	1.2	10.0	1.2	2.9	0.6	0.0	0.0	860
Q2	59.7	2.0	13.5	1.3	13.1	1.5	9.5	1.0	4.1	0.7	0.2	0.2	888
Q3	57.0	1.8	14.3	1.3	13.2	1.1	11.3	1.0	4.2	0.7	0.1	0.1	954
Q4	60.4	1.9	14.9	1.4	15.0	1.2	7.1	0.9	2.6	0.6	0.0	0.0	1,050
Q5(richest)	58.7	2.1	15.8	1.6	16.4	1.3	6.6	0.9	2.5	0.5	0.0	0.0	1,113
M	56.1	4.2	15.1	2.8	15.9	2.4	10.9	2.7	2.0	0.9	0.0	0.0	135
Age													
18-29	67.7	1.6	16.2	1.3	9.4	0.9	5.0	0.7	1.6	0.4	0.1	0.1	1,697
30-44	63.7	1.4	12.8	0.9	13.6	0.9	6.7	0.6	3.1	0.5	0.0	0.0	1,654
45-59	49.4	1.8	12.6	1.1	20.0	1.3	13.4	1.1	4.6	0.7	0.0	0.0	1,030
60-69	42.4	2.8	13.9	1.9	21.6	2.2	16.7	2.0	5.4	1.2	0.0	0.0	362
70-79	43.3	3.2	12.9	2.3	21.1	2.7	19.0	2.5	3.6	1.2	0.0	0.0	193
80+	41.2	6.6	19.4	5.1	14.6	4.5	16.6	4.2	8.1	4.1	0.0	0.0	65
M	0.0	0.0	0.0	0.0	0.0	0.0	0.0	0.0	0.0	0.0	0.0	0.0	
All	59.5	1.0	14.1	0.6	14.4	0.6	8.8	0.4	3.2	0.3	0.1	0.0	5,000

6.16 Problem with 'feeling rested and refreshed' in last 30 days - q2081

	None	SE	Mild	SE	Moderate	SE	Sever	SE	Extreme/ Cannot do	SE	Missing	SE	N
Gender													
Male	63.1	1.4	18.5	1.0	11.9	0.8	5.0	0.5	1.4	0.3	0.0	0.0	2,423
Female	49.7	1.3	19.5	0.9	17.6	0.8	10.1	0.6	2.8	0.4	0.3	0.1	2,577
M	0.0	0.0	0.0	0.0	0.0	0.0	0.0	0.0	0.0	0.0	0.0	0.0	
Residence													
Urban	55.5	1.1	19.5	0.8	14.9	0.7	7.8	0.5	2.1	0.3	0.2	0.1	4,067
Rural	58.7	2.6	16.7	1.9	14.6	1.8	7.4	0.9	2.6	0.7	0.0	0.0	833
M	63.9	3.5	17.8	2.2	13.6	2.7	4.2	1.8	0.5	0.5	0.0	0.0	100
Income													
Q1(poorest)	58.7	2.1	16.4	1.6	14.3	1.3	8.4	1.0	2.1	0.6	0.1	0.1	860
Q2	57.7	1.7	16.8	1.3	13.9	1.2	8.8	1.0	2.7	0.6	0.3	0.2	888
Q3	51.4	2.0	19.0	1.5	17.1	1.3	9.0	1.0	3.1	0.7	0.4	0.2	954
Q4	57.3	2.0	18.7	1.6	14.4	1.4	7.4	1.0	2.1	0.5	0.1	0.1	1,050
Q5(richest)	55.4	2.1	23.2	1.5	14.8	1.2	5.5	0.9	1.1	0.4	0.1	0.1	1,113
M	62.4	3.5	18.0	2.5	13.4	2.5	5.8	2.0	0.4	0.3	0.0	0.0	135
Age													
18-29	59.2	1.7	22.2	1.4	12.7	1.0	4.7	0.6	0.9	0.3	0.3	0.2	1,697
30-44	59.2	1.5	17.6	1.1	14.7	0.9	6.3	0.6	2.2	0.4	0.1	0.1	1,654
45-59	51.9	1.8	16.7	1.3	16.1	1.2	11.7	1.1	3.5	0.7	0.1	0.1	1,030
60-69	45.6	2.6	17.3	2.0	19.0	2.1	15.7	2.1	2.4	0.8	0.0	0.0	362
70-79	52.8	3.2	15.3	2.3	20.5	2.5	8.5	1.8	2.9	1.1	0.0	0.0	193
80+	39.6	6.2	28.9	5.8	15.3	4.4	7.8	3.4	6.8	3.6	1.7	1.7	65
M	0.0	0.0	0.0	0.0	0.0	0.0	0.0	0.0	0.0	0.0	0.0	0.0	
All	56.2	1.0	19.0	0.7	14.8	0.6	7.7	0.4	2.1	0.2	0.2	0.1	5,000

6.17 Problem with 'feeling sad, low, or depressed' in last 30 days - q2090

	None	SE	Mild	SE	Moderate	SE	Sever	SE	Extreme/ Cannot do	SE	Missing	SE	N
Gender													
Male	58.0	1.3	19.7	1.0	13.7	0.8	6.6	0.6	2.0	0.3	0.0	0.0	2,423
Female	39.3	1.0	23.3	0.9	18.8	0.8	12.1	0.7	6.5	0.6	0.1	0.0	2,577
M	0.0	0.0	0.0	0.0	0.0	0.0	0.0	0.0	0.0	0.0	0.0	0.0	
Residence													
Urban	47.3	1.0	22.1	0.8	16.4	0.7	9.7	0.5	4.5	0.4	0.1	0.0	4,067
Rural	52.5	2.3	19.0	1.4	16.4	1.5	8.2	1.2	3.8	0.8	0.0	0.0	833
M	57.1	3.6	18.5	2.8	13.5	3.3	9.0	4.0	1.9	0.9	0.0	0.0	100
Income													
Q1(poorest)	47.2	2.0	20.3	1.3	16.5	1.4	10.1	1.1	5.7	0.9	0.2	0.1	860
Q2	47.8	1.9	20.2	1.6	16.5	1.5	10.7	1.2	4.8	0.6	0.0	0.0	888
Q3	45.6	1.7	19.2	1.5	19.9	1.5	10.7	1.1	4.7	0.8	0.0	0.0	954
Q4	50.2	1.9	22.4	1.6	14.1	1.3	8.4	1.0	4.9	0.8	0.1	0.1	1,050
Q5(richest)	49.7	2.0	25.0	1.6	15.4	1.3	7.7	1.0	2.1	0.5	0.1	0.1	1,113
M	55.1	3.8	18.5	2.8	14.2	2.9	9.4	3.2	2.9	1.3	0.0	0.0	135
Age													
18-29	51.8	1.6	24.2	1.3	14.7	1.1	6.4	0.7	2.9	0.5	0.0	0.0	1,697
30-44	49.4	1.4	21.9	1.2	15.6	0.9	9.0	0.8	4.0	0.5	0.0	0.0	1,654
45-59	44.1	1.7	20.1	1.3	17.9	1.2	12.0	1.1	5.8	0.8	0.1	0.1	1,030
60-69	44.8	2.6	14.3	1.8	22.6	2.2	12.3	1.6	5.5	1.3	0.4	0.3	362
70-79	43.1	3.5	18.8	2.8	16.3	2.5	16.3	2.6	5.6	1.4	0.0	0.0	193
80+	37.1	5.9	12.2	3.9	15.7	4.4	21.3	5.2	13.7	5.0	0.0	0.0	65
M	0.0	0.0	0.0	0.0	0.0	0.0	0.0	0.0	0.0	0.0	0.0	0.0	
All	48.4	0.9	21.5	0.7	16.3	0.6	9.4	0.4	4.3	0.4	0.1	0.0	5,000

6.18 Problem with 'worry or anxiety' in last 30 days - q2091

	None	SE	Mild	SE	Moderate	SE	Sever	SE	Extreme/ Cannot do	SE	Missing	SE	N
Gender													
Male	37.1	1.4	24.6	1.0	22.3	1.1	12.7	0.8	3.3	0.4	0.1	0.1	2,423
Female	22.4	0.9	24.1	1.0	25.9	1.0	19.8	0.9	7.8	0.6	0.1	0.0	2,577
M	0.0	0.0	0.0	0.0	0.0	0.0	0.0	0.0	0.0	0.0	0.0	0.0	
Residence													
Urban	28.0	1.0	24.4	0.8	24.9	0.9	16.6	0.7	6.0	0.4	0.1	0.0	4,067
Rural	36.3	2.2	23.4	1.6	21.7	1.5	14.8	1.5	3.9	0.8	0.0	0.0	833
M	33.5	2.5	27.5	3.6	17.2	2.4	19.6	5.3	2.2	1.1	0.0	0.0	100
Income													
Q1(poorest)	33.3	2.0	22.8	1.6	22.9	1.6	14.7	1.5	6.2	0.8	0.0	0.0	860
Q2	30.1	1.8	21.0	1.5	22.2	1.5	19.5	1.5	7.0	0.9	0.2	0.2	888
Q3	26.9	1.7	23.4	1.5	25.2	1.6	18.4	1.4	6.1	0.8	0.0	0.0	954
Q4	29.9	1.9	27.0	1.6	22.1	1.5	15.0	1.2	5.9	0.8	0.1	0.1	1,050
Q5(richest)	27.2	2.0	25.9	1.8	28.5	1.8	14.4	1.2	3.8	0.6	0.1	0.1	1,113
M	34.6	3.3	27.5	3.6	17.7	2.5	18.3	4.3	1.9	0.9	0.0	0.0	135
Age													
18-29	33.8	1.6	27.3	1.4	22.6	1.2	12.6	1.0	3.7	0.6	0.1	0.1	1,697
30-44	28.1	1.4	24.5	1.2	25.1	1.3	16.8	1.0	5.5	0.6	0.0	0.0	1,654
45-59	26.2	1.6	21.2	1.3	25.3	1.4	19.0	1.3	8.1	0.9	0.1	0.1	1,030
60-69	26.3	2.4	21.8	2.3	23.7	2.3	21.2	2.1	6.7	1.4	0.2	0.2	362
70-79	26.1	3.2	18.6	2.6	28.5	3.0	20.8	2.8	6.0	1.7	0.0	0.0	193
80+	33.1	5.6	22.3	4.5	13.8	4.4	20.6	5.4	10.3	4.5	0.0	0.0	65
M	0.0	0.0	0.0	0.0	0.0	0.0	0.0	0.0	0.0	0.0	0.0	0.0	
All	29.5	0.9	24.3	0.7	24.2	0.8	16.4	0.6	5.6	0.4	0.1	0.0	5,000

7.1 Self-reported utilization of health services and perceived unmet need

	<u>Ambulatory Adult</u>		<u>Ambulatory Child</u>		<u>Inpatient Adult</u>		<u>Inpatient Child</u>		<u>Informal Care</u>		<u>Unmet Care</u>		<u>Non use</u>	
	%	SE	%	SE	%	SE	%	SE	%	SE	%	SE	%	SE
Sex														
Female	69.2	1.1			5.5	0.5			0.4	0.1	2.3	0.3	22.6	1.0
Male	57.5	1.4			3.8	0.4			0.5	0.2	1.4	0.3	36.9	1.3
Area of Residence														
Urban	65.1	1.1			4.6	0.4			0.4	0.1	2.0	0.2	28.0	1.0
Rural	56.4	2.4			5.9	1.0			0.7	0.4	1.8	0.5	35.2	2.1
Age Group														
18-29y	62.2	1.7			5.2	0.6			0.2	0.1	1.9	0.4	30.6	1.6
30-44y	62.9	1.4			3.9	0.6			0.0	0.0	2.4	0.4	30.8	1.3
45-59y	66.4	1.6			4.6	0.8			0.4	0.2	1.7	0.4	26.9	1.5
60-69y	64.9	2.6			5.0	1.3			0.5	0.4	2.1	0.8	27.5	2.4
70+y	66.1	2.8			6.8	1.4			3.6	1.2	0.0	0.0	23.5	2.4
Education Years														
0	58.4	2.3			5.2	0.9			1.9	0.7	0.9	0.4	33.5	2.1
1-5	62.0	1.3			4.9	0.6			0.4	0.2	2.2	0.4	30.4	1.2
6-11	63.4	1.6			5.0	0.6			0.1	0.1	2.1	0.4	29.4	1.5
12+	74.2	2.0			3.5	0.7			0.1	0.1	1.1	0.4	21.2	1.8
Income Quintiles														
Q1	55.0	2.2			6.1	0.9			0.6	0.4	1.8	0.4	36.5	2.0
Q2	57.7	1.9			5.9	0.8			0.5	0.3	2.9	0.6	32.9	2.0
Q3	62.0	1.8			5.0	0.8			0.5	0.3	2.9	0.6	29.6	1.6
Q4	67.3	1.7			4.2	0.7			0.2	0.2	1.7	0.5	26.6	1.7
Q5	72.6	1.8			3.4	0.7			0.3	0.2	0.8	0.3	22.9	1.8
Ownership														
Government	80.8	1.1			6.9	0.6			0.8	0.3	2.5	0.4	9.0	0.7
Private	83.0	1.2			5.8	0.8			0.2	0.1	1.2	0.4	9.8	0.9
NGO														
Other	78.7	6.8			4.6	3.7			3.0	3.0	3.2	3.0	10.6	5.0
TOTAL	63.9	1.0			4.7	0.4			0.4	0.1	1.9	0.2	29.1	0.9

This table presents the percent of people reporting utilization of health services when they last needed care. It combines information from Q7000, Q7001 and Q7016. Utilization was recorded in the WHS in three separate categories: ambulatory care, hospital inpatient care, and informal care. Time cut-offs for utilization recall used here are 1 year for ambulatory care and informal care, and 3 years for hospital inpatient care. Utilization of ambulatory and inpatient care services

have been further sub-divided into "adult" and "child" categories. In addition to utilization, two other related aspects are being reported here - unmet need and non-use (regardless of expressed need) of health services. Unmet need was estimated on the basis of responses to Q7000 and Q7004. Non-use of health services is simply the percent of respondents who reported no need in Q7000 or did not utilize services in the time cut-offs mentioned above.

Results are reported for the total WHS sample (category: "TOTAL"), and by the following sample sub-groups: sex, area of residence, age group, years of education, income quintiles, and ownership (of health facility). Mean values and standard errors (SE) are reported for each category.

Sub-groups common to other tables were constructed in the same manner. Common sub-groups include sex (Q1001), area of residence (Q0104), age group (regrouping of reported age in Q1002), years of education (Q1010) and income quintiles. To determine income and subsequently income quintiles, an asset index was constructed for each household using responses to section 0700 on "Permanent Income Indicators" from the WHS household questionnaire.

Ownership was constructed uniquely for the responsiveness section's tables. There are four categories of ownership: "Operated by the government" (Government), "Privately operated" (Private), "NGO" and "Other". To construct the ownership sub-group, information was combined from (a) Q7204, Q7205 and Q7301 for those utilizing ambulatory services, and (b) Q7200, Q7201 and Q7401 for those utilizing hospital inpatient services.

7.2 Patient assessed characteristics of ambulatory health services

	Patients visiting a medical doctor, of those visiting any health care provider		Patients rating characteristics of health care provider as adequate/more than adequate						Mean time taken to reach health facility (in minutes)		Patients using private car or motorcycle to reach facility		Mean cost for an ambulatory care visit (local currency)		Percent of population perceiving discrimination	
	%	SE	%	SE	%	SE	%	SE	Minutes	SE	%	SE	mean cost	SE	%	SE
Sex																
Female	80.0	1.3	93.0	0.7	91.9	0.9	80.5	1.3	27.6	1.6	29.0	1.8	95.1	13.5	11.1	1.1
Male	70.9	1.6	93.3	0.9	90.9	1.0	81.8	1.5	25.6	1.5	39.0	2.0	124.3	14.9	10.4	1.2
Area of Residence																
Urban	76.0	1.2	93.1	0.6	91.4	0.8	80.9	1.2	24.4	1.3	33.1	1.8	111.9	12.5	11.0	1.0
Rural	74.3	3.3	93.8	1.7	91.4	1.6	80.8	2.9	41.6	4.0	35.5	4.2	96.1	27.0	10.1	2.1
Age Group																
18-29y	68.6	2.2	90.0	1.4	91.4	1.3	82.6	1.8	24.6	1.7	31.1	2.3	102.3	18.0	11.3	1.5
30-44y	73.2	1.8	93.0	0.9	90.3	1.1	80.3	1.6	26.7	1.9	33.5	2.2	82.5	7.9	11.9	1.4
45-59y	81.0	1.8	96.4	0.8	92.3	1.2	79.9	2.0	27.6	2.1	35.2	2.8	141.5	25.5	9.8	1.4
60-69y	85.4	3.1	93.5	1.9	93.5	2.0	83.0	3.1	27.9	3.1	30.0	4.0	158.7	46.3	10.1	2.9
70+y	92.2	2.2	95.6	1.8	90.8	2.5	79.5	3.3	31.4	4.6	44.2	4.5	77.5	15.8	6.5	2.1
Education Years																
0	85.0	2.5	91.7	2.0	86.2	2.8	78.9	3.1	31.3	3.9	20.4	3.1	39.5	10.0	12.7	2.5
1-5	77.5	1.8	94.0	0.9	90.9	1.1	81.7	1.7	28.9	1.8	31.7	1.9	86.3	11.5	12.4	1.4
6-11	73.5	1.7	91.9	1.1	92.6	1.0	80.5	1.8	25.7	1.7	29.6	2.1	102.9	14.5	11.3	1.3
12+	73.1	2.4	94.4	1.4	92.7	1.5	82.5	2.2	23.0	1.8	50.8	3.4	169.1	34.1	6.1	1.5
Income Quintiles																
Q1	75.1	2.9	91.7	1.7	87.3	2.2	80.1	2.6	37.3	3.4	23.4	3.5	29.1	3.9	12.6	2.5
Q2	78.3	2.2	93.2	1.4	90.9	1.5	77.6	2.4	25.5	2.1	22.1	2.2	61.7	9.2	15.1	2.0
Q3	76.2	2.3	91.7	1.4	90.3	1.4	82.9	2.0	25.9	2.2	26.1	2.5	91.8	18.0	9.9	1.5
Q4	74.4	2.3	92.8	1.3	90.8	1.7	81.8	2.0	26.8	2.2	30.8	2.3	103.3	17.5	14.0	1.8
Q5	75.2	2.2	95.4	1.0	95.2	1.1	81.3	2.2	22.7	1.7	53.1	3.1	174.5	26.5	5.3	1.2
Condition																
Child-Visit																
Preventive	81.7	7.9	90.7	6.8	97.5	2.5	93.8	3.7	25.5	3.0	28.8	7.8	55.6	24.6	8.2	4.5
Childbirth																
Acute	83.0	5.8	92.9	3.3	95.5	2.2	74.2	5.4	28.4	4.5	34.9	6.9	64.0	17.6	15.3	4.5
Injury	79.6	4.3	88.4	4.0	87.5	3.4	80.9	4.3	31.0	5.4	51.0	5.6	66.6	21.7	11.0	3.2
Chronic	94.4	2.2	95.6	2.3	88.5	3.6	80.2	4.1	31.8	5.9	24.8	4.6	66.0	22.2	14.5	4.1

	Patients visiting a medical doctor, of those visiting any health care provider		Patients rating characteristics of health care provider as adequate/more than adequate						Mean time taken to reach health facility (in minutes)		Patients using private car or motorcycle to reach facility		Mean cost for an ambulatory care visit (local currency)		Percent of population perceiving discrimination	
	%	SE	%	SE	%	SE	%	SE	Minutes	SE	%	SE	mean cost	SE	%	SE
Other	76.5	1.2	93.1	0.6	91.3	0.8	80.7	1.2	26.2	1.3	32.8	1.7	107.6	11.5	10.7	1.0
Ownership																
Government	83.2	1.3	90.0	0.9	87.6	1.0	75.7	1.4	25.7	1.6	24.3	1.6	27.3	2.4	12.7	1.1
Private	66.7	1.8	96.9	0.6	96.3	0.7	87.9	1.3	27.9	1.7	45.2	2.3	158.7	17.0	8.5	1.1
NGO																
Other	65.9	9.9	100.0	0.0	88.5	8.0	89.7	7.1	23.3	5.5	20.2	8.5	9.2	3.3	0.0	0.0
Self-Assessed Health																
Very-Good	63.5	2.8	92.3	1.9	94.4	1.3	85.3	2.4	24.9	2.2	38.2	3.1	143.1	25.0	6.2	1.6
Good	71.7	1.8	95.0	0.7	93.4	0.8	82.6	1.6	25.5	1.6	36.7	2.3	108.6	15.0	8.1	1.0
Moderate	83.1	1.5	92.6	0.9	89.0	1.2	78.6	1.6	27.5	1.7	29.6	2.0	96.7	15.5	13.1	1.4
Bad	89.6	2.6	86.7	3.3	84.2	3.1	74.7	4.0	33.9	4.9	25.0	4.2	88.5	28.5	21.6	4.3
Very-Bad	81.2	7.6	90.9	5.2	97.2	2.2	84.9	5.6	29.4	5.9	25.9	7.3	65.2	11.7	24.6	8.3
TOTAL	75.9	1.1	93.1	0.6	91.4	0.7	81.1	1.1	26.7	1.3	33.5	1.6	108.7	11.4	10.7	0.9

This table looks at various characteristics of a visit to an ambulatory care facility, for those who utilized such services in the previous 12 months (Q7204 and Q7205). Characteristics of a visit reported here include:

- (1) The percent of patients visiting a medical doctor (of those visiting any ambulatory provider) (Q7302).
- (2) Patients' rating of *skills*, *equipment*, and *drug supplies* of the provider as "adequate": percent of patients who reported "Yes" to questions Q7304, Q7305 and Q7306, respectively.
- (3) Barriers or facilitators to care access have been reported here for those who utilized ambulatory care services in the last 12 months. They include:
 - (a) *Mean time taken to reach facility*: patient reported times from Q7307 were used to calculate averages across sample sub-groups.
 - (b) *Patients using private motor vehicles*: percent of patients who reported using a "private car or motorcycle" to get to the facility in Q7308.
 - (c) *Mean cost of visit*: patient reported costs in Q7309-Q7313 were summed up for an individual and then averaged across sample sub-groups.
 - (d) *Perceived discrimination*: percent of patients who reported "Yes" to any form of discrimination listed in Q7328-Q7334.

Results are reported for the total WHS sample (category: "TOTAL"), and by the following sample sub-groups: sex, area of residence, age group, years of education, income quintiles, reason for seeking care (condition), ownership (of health facility), and self-assessed health. Mean values and standard errors (SE) are reported for each category.

Sub-groups common to other tables were constructed in the same manner. Common sub-groups include: sex (Q1001), area of residence (Q0104), age group (regrouping of reported age in Q1002), years of education (Q1010) and income quintiles. To determine income and subsequently income quintiles, an asset index was constructed for each household using responses to section 0700 on "Permanent Income Indicators" from the WHS household questionnaire.

Ownership, condition and self-assessed health sub-groups were constructed uniquely for the responsiveness section's tables. There are four categories of ownership: "Operated by the government" (Government), "Privately operated" (Private), "NGO" and "Other". To construct the ownership sub-group, information was combined from (a) Q7204, Q7205 and Q7301 for those utilizing ambulatory services, and (b) Q7200, Q7201 and Q7401 for those utilizing hospital inpatient services. The sub-group "Condition" used and regrouped information from Q7003 ("Which reason best describes why you [your child] last needed health care?") into 6 categories. The six categories include preventive care (immunization, antenatal consultation and family planning); childbirth; acute conditions (high fever, severe diarrhoea, or cough); injury; chronic conditions (arthritis, asthma and heart disease); and other (dental care, minor surgery and other). Self-assessed health was constructed using information from Q2000 ("In general, how would you rate your health today as?") in the WHS. Respondents could select one of the

following five categories: "Very good", "Good", "Moderate", "Bad" and "Very bad".

7.3.1 Patient assessment of responsiveness domains for ambulatory services: percent reporting "Moderate", "Bad" or "Very bad" - 1

	Prompt Attention		Wait Time		Talked Respectfully		Dignity		Privacy		Communication	
	Travel Time											
	%	SE	%	SE	%	SE	%	SE	%	SE	%	SE
Sex												
Female	29.2	1.6	45.1	1.8	10.3	1.0	4.0	0.6	14.5	1.2	23.3	1.5
Male	23.0	1.6	39.1	1.8	8.2	0.9	5.3	0.8	13.7	1.1	24.3	1.5
Area of Residence												
Urban	24.7	1.4	41.5	1.5	9.5	0.8	4.4	0.5	14.0	0.9	22.7	1.2
Rural	37.7	3.5	49.3	3.2	9.4	2.1	5.9	1.3	14.2	2.4	30.1	3.6
Age Group												
18-29y	26.6	2.1	43.8	2.4	10.1	1.2	4.2	0.8	14.9	1.6	28.3	2.1
30-44y	26.2	1.8	44.7	2.0	10.0	1.2	5.2	0.8	13.9	1.3	22.2	1.6
45-59y	27.3	2.4	42.4	2.5	8.2	1.5	4.8	1.1	13.8	1.9	22.1	2.2
60-69y	24.3	3.4	33.1	3.4	10.4	2.5	2.6	1.1	14.1	3.0	22.3	3.6
70+y	26.3	3.9	36.6	4.1	5.8	2.0	4.8	1.8	13.1	2.9	18.1	3.0
Education Years												
0	34.9	3.5	43.0	3.7	13.9	2.3	7.6	1.9	20.4	2.8	29.1	3.6
1-5	28.3	1.8	47.5	2.1	10.8	1.4	6.3	0.9	17.4	1.5	27.1	1.8
6-11	26.0	1.9	39.5	2.0	9.8	1.0	4.0	0.7	12.5	1.2	23.7	1.7
12+	19.5	2.2	38.0	2.7	4.0	1.2	1.1	0.6	9.0	1.7	15.3	2.0
Income Quintiles												
Q1	40.9	3.2	54.6	3.1	14.8	2.3	10.0	1.8	21.0	2.5	36.8	3.5
Q2	28.8	2.4	51.7	2.9	13.2	1.7	5.6	1.1	19.1	2.2	29.9	2.6
Q3	27.3	2.4	43.1	2.5	11.9	1.4	5.3	1.1	17.9	2.1	24.6	2.3
Q4	26.5	2.2	37.8	2.3	8.2	1.5	3.3	1.0	11.6	1.5	22.7	2.1
Q5	16.9	1.9	34.2	2.2	3.9	1.0	2.1	0.8	6.5	1.4	13.4	1.8
Condition												
Child-Visit												
Preventive	19.3	5.2	38.5	10.3	12.1	6.8	2.4	2.3	15.1	7.0	25.7	8.3
Childbirth												
Acute	31.6	6.3	47.2	6.5	8.2	3.0	5.5	2.3	14.5	3.9	34.3	6.7
Injury	31.2	5.2	45.6	5.4	9.9	3.1	5.5	2.1	21.4	4.5	33.3	5.6
Chronic	34.8	5.6	44.6	5.9	7.4	3.1	3.4	1.9	14.2	3.7	27.8	5.1
Other	25.9	1.4	42.3	1.5	9.7	0.8	4.6	0.6	14.2	0.9	23.1	1.2
Ownership												
Government	30.7	1.7	54.5	1.7	14.4	1.1	6.4	0.7	20.5	1.3	34.9	1.7
Private	21.2	1.6	27.9	1.7	3.2	0.6	2.3	0.5	6.4	0.9	10.1	1.0
NGO												
Other	16.5	9.4	3.9	3.9	0.0	0.0	0.0	0.0	0.0	0.0	4.0	4.0
Self-Assessed Health												
Very-Good	18.6	2.4	32.6	2.9	6.6	1.6	2.8	1.0	9.1	1.8	18.1	2.8
Good	22.6	1.6	39.3	2.0	6.8	1.0	4.0	0.7	11.6	1.2	21.0	1.6
Moderate	31.1	2.0	48.2	2.0	12.8	1.3	6.0	0.8	17.9	1.4	27.3	1.9
Bad	39.8	4.7	50.6	4.8	14.0	3.2	3.4	1.7	20.0	3.8	33.0	4.0
Very-Bad	39.7	8.4	48.6	7.9	7.8	3.5	6.7	3.9	18.8	6.7	30.3	7.6
TOTAL	26.4	1.3	42.4	1.4	9.4	0.7	4.6	0.5	14.2	0.8	23.7	1.2

The following table reports the percent of people perceiving poor responsiveness in ambulatory care facilities, where "poor" is defined as a rating of "Moderate", "Bad" or "Very bad" in Q7315-Q7327 which have 5 response options (including "Good" and "Very good"). Ratings for each of the seven domains of ambulatory care responsiveness (including 13 questions) by patients have been presented here. There are two questions each for six of the seven domains; the domain choice has only one question. The following questions from the survey have been used to determine patient assessment of each responsiveness domain:

- (1) *Prompt attention*: travel time (Q7315) and wait time (Q7316).
- (2) *Dignity*: talked respectfully (Q7317) and privacy (Q7318).
- (3) *Communication*: clear explanation (Q7319) and time for questions (Q7320).
- (4) *Autonomy*: treatment information (Q7321) and involvement (Q7322).
- (5) *Confidentiality*: talk privately (Q7323) and confidentiality of records (Q7324).
- (6) *Choice of health care provider*: Q7325.
- (7) *Basic amenities*: cleanliness (Q7326) and space (Q7327).

Results are reported for the total WHS sample (category: "TOTAL"), and by the following sample sub-groups: sex, area of residence, age group, years of education, income quintiles, reason for visit, ownership (of health facility), and self-assessed health. Mean values and standard errors (SE) are reported for each category.

Sub-groups common to other tables were constructed in the same manner. Common sub-groups include sex (Q1001), area of residence (Q0104), age group (regrouping of reported age in Q1002), years of education (Q1010) and income quintiles. To determine income and subsequently income quintiles, an asset index was constructed for each household using responses to section 0700 on "Permanent Income Indicators" from the WHS household questionnaire.

Ownership, condition and self-assessed health sub-groups were constructed uniquely for the responsiveness section's tables. There are four categories of ownership: "Operated by the government" (Government), "Privately operated" (Private), "NGO" and "Other". To construct the ownership sub-group, information was combined from (a) Q7204, Q7205 and Q7301 for those utilizing ambulatory services, and (b) Q7200, Q7201 and Q7401 for those utilizing hospital inpatient services. The sub-group "Condition" used and regrouped information from Q7003 ("Which reason best describes why you [your child] last needed health care?") into 6 categories. The six categories include preventive care (immunization, antenatal consultation and family planning); childbirth; acute conditions (high fever, severe diarrhoea, or cough); injury; chronic conditions (arthritis, asthma and heart disease); and other (dental care, minor surgery and other). Self-assessed health was constructed using information from Q2000 ("In general, how would you rate your health today as?") in the WHS. Respondents were asked to select one of the following five categories: "Very good", "Good", "Moderate", "Bad" and "Very bad".

7.3.2 Patient assessment of responsiveness domains for ambulatory services: percent reporting "Moderate", "Bad" or "Very bad" - 2

	Autonomy				Confidentiality				Choice of		Basic Amenities			
	Treatment Information		Involvement		Talk Privately		Confidentiality of Records		Healthcare Provider		Cleanliness		Space	
	%	SE	%	SE	%	SE	%	SE	%	SE	%	SE	%	SE
Sex														
Female	29.1	1.6	29.3	1.8	11.8	1.0	7.3	1.0	32.8	1.6	13.9	1.2	25.6	1.5
Male	28.2	1.8	29.2	1.7	12.0	1.2	7.8	1.0	36.8	1.8	11.5	1.2	25.5	1.6
Area of Residence														
Urban	28.3	1.3	28.6	1.5	11.9	0.9	7.5	0.8	33.7	1.5	12.8	1.0	24.8	1.2
Rural	31.2	3.6	32.9	3.0	12.0	1.8	8.7	1.6	39.5	3.8	13.2	2.4	31.7	3.6
Age Group														
18-29y	32.0	2.3	29.6	2.3	14.5	1.5	8.1	1.2	37.7	2.4	13.8	1.6	30.5	2.1
30-44y	27.0	1.7	28.0	1.7	11.3	1.2	6.7	0.9	34.4	2.0	13.8	1.4	24.9	1.7
45-59y	29.5	2.4	30.2	2.5	9.8	1.4	6.7	1.3	34.5	2.6	11.6	1.6	22.8	2.0
60-69y	24.6	3.4	31.7	3.6	13.3	2.9	10.4	2.6	28.6	3.6	11.9	2.7	19.9	3.4
70+y	23.2	3.6	27.2	3.7	9.1	2.6	8.1	2.3	29.4	3.9	8.9	2.8	23.4	3.6
Education Years														
0	34.1	3.6	37.5	3.6	11.3	2.3	8.8	1.9	43.8	3.6	11.3	2.3	26.3	3.1
1-5	33.9	2.0	34.6	2.0	14.2	1.4	10.2	1.3	37.3	2.2	15.5	1.4	25.6	1.9
6-11	26.5	1.8	28.0	1.9	12.6	1.3	7.2	1.1	33.5	1.9	11.9	1.4	26.5	1.7
12+	21.1	2.4	17.4	2.3	7.3	1.4	3.0	1.0	27.2	2.6	10.6	1.8	23.8	2.2
Income Quintiles														
Q1	41.7	3.6	42.1	3.0	15.4	2.1	12.2	1.9	42.9	3.2	15.6	2.5	32.9	3.4
Q2	35.0	2.4	38.0	2.5	16.9	2.0	14.2	2.0	44.8	3.0	17.8	2.2	31.2	2.8
Q3	33.0	2.3	31.6	2.5	15.0	1.7	7.8	1.4	36.1	2.5	14.7	2.0	27.2	2.4
Q4	26.7	2.2	26.0	2.4	10.6	1.6	6.4	1.6	36.4	2.4	11.8	1.6	25.3	2.3
Q5	17.1	2.2	18.2	2.4	5.5	1.0	2.5	0.8	21.0	2.0	7.7	1.4	18.1	1.8
Condition														
Child-Visit														
Preventive	10.7	4.8	26.9	7.6	8.8	4.5	2.9	2.8	26.5	10.0	6.0	5.7	28.2	8.7
Childbirth														
Acute	35.1	5.9	40.6	6.4	17.0	4.7	1.4	1.4	46.4	7.0	18.8	5.0	35.3	6.1
Injury	40.3	5.2	38.8	5.4	26.0	5.0	20.7	5.3	52.3	5.4	17.5	4.1	33.6	5.3
Chronic	33.1	5.7	35.9	5.7	14.0	3.8	7.4	3.1	37.6	5.9	20.2	5.1	22.7	5.0
Other	28.5	1.3	28.8	1.4	10.9	0.8	7.3	0.8	33.6	1.4	12.4	1.0	25.3	1.2
Ownership														
Government	40.6	1.7	41.2	1.8	17.1	1.2	11.6	1.0	51.4	1.8	20.7	1.4	36.1	1.8
Private	13.9	1.3	14.6	1.4	5.6	0.8	2.7	0.7	13.9	1.2	3.2	0.6	12.6	1.1
NGO														
Other	15.0	8.5	13.4	7.4	3.7	3.7	0.0	0.0	17.2	8.2	0.0	0.0	8.7	6.1
Self-Assessed Health														
Very-Good	21.2	2.8	18.8	2.7	11.7	2.2	5.2	1.5	25.9	2.7	8.7	1.7	18.4	2.4
Good	24.9	1.7	23.7	1.8	9.5	1.1	6.8	1.0	31.6	1.8	12.1	1.3	25.8	1.7
Moderate	33.3	1.7	36.8	2.0	14.6	1.3	9.6	1.2	40.0	2.0	15.3	1.4	27.7	1.8
Bad	39.2	3.9	40.3	4.1	13.1	3.1	7.1	2.5	41.6	4.3	11.6	2.8	26.6	3.8
Very-Bad	51.5	8.4	54.9	8.6	11.6	4.8	5.4	3.6	43.3	9.0	18.1	6.7	30.5	7.4
TOTAL	28.7	1.2	29.3	1.3	11.9	0.8	7.5	0.7	34.6	1.4	12.8	0.9	25.5	1.2

The following table reports the percent of people perceiving poor responsiveness in ambulatory care facilities, where "poor" is defined as a rating of "Moderate", "Bad" or "Very bad" in Q7315-Q7327 which have 5 response options (including "Good" and "Very good"). Ratings for each of the seven domains of ambulatory care responsiveness (including 13 questions) by patients have been presented here. There are two questions each for six of the seven domains; the domain choice has only one question. The following questions from the survey have been used to determine patient assessment of each responsiveness domain:

- (1) *Prompt attention*: travel time (Q7315) and wait time (Q7316).
- (2) *Dignity*: talked respectfully (Q7317) and privacy (Q7318).
- (3) *Communication*: clear explanation (Q7319) and time for questions (Q7320).
- (4) *Autonomy*: treatment information (Q7321) and involvement (Q7322).
- (5) *Confidentiality*: talk privately (Q7323) and confidentiality of records (Q7324).
- (6) *Choice of health care provider*: Q7325.
- (7) *Basic amenities*: cleanliness (Q7326) and space (Q7327).

Results are reported for the total WHS sample (category: "TOTAL"), and by the following sample sub-groups: sex, area of residence, age group, years of education, income quintiles, reason for visit, ownership (of health facility), and self-assessed health. Mean values and standard errors (SE) are reported for each category.

Sub-groups common to other tables were constructed in the same manner. Common sub-groups include sex (Q1001), area of residence (Q0104), age group (regrouping of reported age in Q1002), years of education (Q1010) and income quintiles. To determine income and subsequently income quintiles, an asset index was constructed for each household using responses to section 0700 on "Permanent Income Indicators" from the WHS household questionnaire.

Ownership, condition and self-assessed health sub-groups were constructed uniquely for the responsiveness section's tables. There are four categories of ownership: "Operated by the government" (Government), "Privately operated" (Private), "NGO" and "Other". To construct the ownership sub-group, information was combined from (a) Q7204, Q7205 and Q7301 for those utilizing ambulatory services, and (b) Q7200, Q7201 and Q7401 for those utilizing hospital inpatient services. The sub-group "Condition" used and regrouped information from Q7003 ("Which reason best describes why you [your child] last needed health care?") into 6 categories. The six categories include preventive care (immunization, antenatal consultation and family planning); childbirth; acute conditions (high fever, severe diarrhoea, or cough); injury; chronic conditions (arthritis, asthma and heart disease); and other (dental care, minor surgery and other). Self-assessed health was constructed using information from Q2000 ("In general, how would you rate your health today as?") in the WHS. Respondents were asked to select one of the following five categories: "Very good", "Good", "Moderate", "Bad" and "Very bad".

7.4 Patient assessed characteristics of hospital inpatient health services

	Patients staying for more than 6 days on last hospital visit		Patients rating characteristics of health care provider as adequate / more than adequate				Mean time taken to reach health facility (in minutes)		Patients using private car or motorcycle to reach facility		Patients waiting more than a month to be admitted		Mean number of patients sleeping in the same room		Mean cost for a hospital visit		Percent of population perceiving discrimination			
	%	SE	%	SE	%	SE	%	SE	Minutes	SE	%	SE	%	SE	No	SE	mean cost	SE	%	SE
Sex																				
Female	12.7	1.3	90.4	1.1	93.0	1.1	92.6	1.0	42.2	3.6	69.4	2.1	2.4	0.6	3.1	0.6	366.7	58.4	16.5	1.6
Male	30.4	2.6	92.6	1.4	90.9	1.7	93.0	1.4	52.0	5.3	62.3	3.0	2.3	0.9	3.1	0.6	239.8	48.0	14.7	2.0
Area of Residence																				
Urban	19.5	1.5	90.3	1.0	93.0	1.1	92.9	1.1	41.1	3.5	66.5	2.1	2.8	0.6	3.1	0.6	350.7	53.4	16.4	1.5
Rural	14.2	2.6	93.8	1.5	88.1	2.9	91.8	1.9	63.7	6.7	73.1	4.6	0.9	0.8	3.1	0.7	280.0	70.0	14.8	3.0
Age Group																				
18-29y	7.9	1.7	88.9	1.6	92.7	1.3	92.6	1.3	42.8	6.2	67.3	3.0	1.6	0.8	3.3	0.6	303.4	57.0	18.6	2.2
30-44y	15.7	1.9	92.5	1.4	92.5	1.7	95.2	1.5	49.9	5.2	64.0	2.9	2.2	0.9	3.1	0.6	363.1	88.1	15.3	1.9
45-59y	19.6	3.3	89.8	2.3	90.2	2.3	87.7	2.9	37.2	3.6	70.5	3.6	3.5	1.4	2.9	0.7	263.7	64.7	17.2	3.0
60-69y	44.0	5.7	94.7	2.0	93.8	2.5	96.3	1.8	46.9	7.6	67.8	5.6	2.9	2.0	3.2	0.7	448.3	158.2	12.6	3.5
70+y	38.8	5.3	94.0	2.3	93.6	2.5	91.7	2.8	56.3	9.8	69.6	5.0	2.8	1.7	2.8	0.7	194.0	57.6	8.3	3.0
Education Years																				
0	29.9	4.1	94.1	2.0	93.5	2.2	86.5	3.3	55.3	7.2	55.3	4.4	3.6	1.7	3.5	0.7	96.7	27.5	14.7	3.5
1-5	19.7	1.9	90.7	1.4	90.0	1.7	93.5	1.2	46.7	4.6	65.8	2.8	1.6	0.7	3.3	0.6	258.9	55.5	17.0	2.1
6-11	14.0	1.8	89.4	1.6	92.7	1.5	92.4	1.4	38.9	4.2	66.7	3.1	2.2	0.8	3.2	0.6	316.5	49.4	18.8	2.2
12+	16.6	3.8	94.3	1.7	96.4	1.2	97.1	1.6	50.2	11.0	81.5	3.8	3.7	1.8	2.0	0.7	629.9	171.3	7.0	2.1
Income Quintiles																				
Q1	16.0	2.5	92.2	1.6	91.4	1.9	92.3	2.0	59.1	7.9	57.6	4.3	0.7	0.5	3.5	0.6	180.0	65.6	17.1	2.8
Q2	19.1	3.0	90.6	1.8	91.5	1.8	87.8	2.6	51.0	6.1	64.2	3.5	2.2	0.9	3.6	0.7	147.5	29.3	21.2	2.8
Q3	16.5	2.6	88.2	2.2	88.5	2.1	91.7	1.9	38.1	4.0	63.7	4.0	1.3	0.9	3.4	0.7	251.9	78.5	19.5	2.9
Q4	20.0	3.2	91.2	2.1	90.1	2.6	94.0	2.0	39.9	7.3	69.4	3.7	4.2	2.0	3.0	0.7	357.3	67.1	12.6	3.1
Q5	21.2	3.1	91.6	2.0	97.9	0.9	96.9	1.3	38.1	6.6	82.2	3.5	3.7	1.4	2.1	0.6	680.9	138.8	11.4	2.6
Condition																				
Child-Visit																				
Fever	9.0	3.8	90.1	3.3	88.0	4.0	86.0	4.9	27.2	3.8	50.8	7.5	0.0	0.0	3.6	0.8	63.3	34.0	21.7	5.8
Childbirth	2.6	0.8	91.0	1.6	96.1	1.0	95.5	1.1	32.8	2.2	79.4	2.5	0.0	0.0	3.2	0.6	307.0	59.1	15.5	2.3
Arthritis	12.0	11.5	85.6	13.5	85.6	13.5	90.6	9.3	21.2	7.9	75.6	16.0	8.4	8.4	2.1	1.1	588.0	316.7	26.5	16.8
Asthma	41.3	12.9	100.0	0.0	85.3	9.6	92.4	7.3	35.2	9.2	72.3	10.6	0.0	0.0	2.1	0.8	65.8	32.1	5.1	4.3
Heart-Disease	42.7	8.7	93.9	3.2	88.7	4.3	97.8	2.2	51.4	12.0	73.0	7.7	5.2	4.1	2.4	0.8	240.2	118.6	10.4	4.7
Injury	21.6	5.8	88.2	4.5	87.1	4.8	87.6	5.4	35.7	5.6	55.8	8.1	0.0	0.0	3.9	1.1	119.5	39.7	16.0	5.3
Minor-Surgery	21.7	2.7	95.6	1.2	97.0	0.9	96.5	1.4	63.3	6.6	59.8	3.3	7.0	1.7	2.8	0.6	521.1	95.8	16.7	2.3
Other	27.6	2.6	87.2	1.9	86.9	2.2	88.2	2.1	45.9	7.0	64.9	3.1	1.0	0.5	3.3	0.7	184.7	49.1	15.9	2.1
Ownership																				
Government	19.8	1.6	89.6	1.2	90.6	1.3	90.8	1.4	44.0	3.0	62.6	2.3	2.7	0.8	3.7	0.6	146.4	48.4	16.7	1.7
Private	16.2	2.0	93.2	1.2	95.1	0.9	95.6	1.1	47.4	5.9	73.6	2.6	1.9	0.8	2.3	0.6	519.2	66.7	14.8	1.9
NGO																				
Other	29.3	14.3	95.1	4.9	81.2	13.0	91.3	8.3	47.8	23.3	71.1	11.6	1.4	1.4	2.5	1.0	309.1	100.0	16.3	9.9
Self-Assessed Health																				
Very-Good	9.7	3.0	90.0	2.4	96.1	1.7	95.0	2.1	32.4	3.6	77.8	3.9	3.9	2.0	2.5	0.7	513.1	107.8	8.7	2.5
Good	14.6	2.1	93.0	1.3	95.4	1.1	96.3	1.0	51.9	7.1	72.2	2.8	2.2	1.0	2.9	0.6	423.4	98.2	12.2	1.9
Moderate	18.9	1.9	91.0	1.3	90.9	1.6	92.2	1.2	44.6	3.4	65.2	2.6	2.0	0.7	3.2	0.6	271.3	46.9	16.2	1.8
Bad	30.1	4.4	92.0	2.9	89.4	2.8	88.1	4.1	40.0	5.4	54.1	5.2	1.8	1.3	3.6	0.8	125.7	35.9	26.2	4.5
Very-Bad	34.4	7.2	79.8	6.0	82.6	6.0	77.8	7.0	47.0	7.0	56.2	7.6	5.4	3.3	3.4	0.9	152.2	110.0	32.0	7.8
TOTAL	18.5	1.3	91.1	0.9	92.3	1.0	92.7	0.9	45.4	3.2	67.1	1.9	2.4	0.5	3.1	0.6	322.5	42.9	15.9	1.3

This table looks at various characteristics of a visit to a hospital inpatient care facility, for those who utilized such services in the past 3 years (Q7200, Q7201 and Q7402). Characteristics of a visit reported here include:

(1) The percent of patients who stayed 6 days or more at an inpatient facility during their last visit (Q7404).

(2) Patients' rating of *skills, equipment, and drug supplies* of the provider as "adequate": percent of patients who reported "Yes" to questions Q7405, Q7406 and Q7407, respectively.

(3) Barriers or facilitators to care access have been reported here for those who utilized inpatient care services in the last 3 years. They include:

(a) *Mean time taken to reach facility*: patient reported times from Q7408 were used to calculate averages across sample sub-groups.

(b) *Patients using private motor vehicles*: percent of patients who reported using a "private car or motorcycle" to get to the facility in Q7409.

(c) *Patients waiting more than a month to be admitted*: percent of patients who reported waiting more than a month to be admitted in Q7410.

(d) *Mean number of patients sleeping in same room*: averages across sample sub-groups have been constructed for numbers reported in Q7417.

(c) *Mean cost of visit*: patient reported costs in Q7411-Q7415 were summed up for an individual and then averaged across sample sub-groups.

(d) *Perceived discrimination*: percent of patients who reported "Yes" to any form of discrimination asked in Q7433-Q7439.

Results are reported for the total WHS sample (category: "TOTAL"), and by the following sample sub-groups: sex, area of residence, age group, years of education, income quintiles, reason for seeking care (condition), ownership (of health facility), and self-assessed health. Mean values and standard errors (SE) are reported for each category.

Sub-groups common to other tables were constructed in the same manner. Common sub-groups include sex (Q1001), area of residence (Q0104), age group (regrouping of reported age in Q1002), years of education (Q1010) and income quintiles. To determine income and subsequently income quintiles, an asset index was constructed for each household using responses to section 0700 on "Permanent Income Indicators" from the WHS household questionnaire.

Ownership, condition and self-assessed health sub-groups were constructed uniquely for the responsiveness section's tables. There are four categories of ownership: "Operated by the government" (Government), "Privately operated" (Private), "NGO" and "Other". To construct the ownership sub-group, information was combined from (a) Q7204, Q7205 and Q7301 for those utilizing ambulatory services, and (b) Q7200, Q7201 and Q7401 for those utilizing hospital inpatient services. The sub-group "Condition" used information from Q7403 ("Which of the following best describes the reason for your [child's] last overnight stay?"). The eight categories of Q7403 include high fever, diarrhoea, or cough; childbirth; arthritis; asthma; heart disease; bodily injury; minor surgery; and other. Self-assessed health was constructed using information from Q2000 ("In general, how would you rate your health today as?") in the WHS. Respondents were asked to select one of the following five categories: "Very good", "Good", "Moderate", "Bad" and "Very bad".

7.5.1 Patient assessment of responsiveness domains for hospital inpatient services: percent reporting "Moderate", "Bad" or "Very bad" - 1

	Prompt Attention				Dignity				Communication				Autonomy			
	Travel Time		Wait Time		Talked Respectfully		Privacy		Clear Explanation		Time for Questions		Treatment Information		Involvement	
	%	SE	%	SE	%	SE	%	SE	%	SE	%	SE	%	SE	%	SE
Sex																
Female	33.7	2.1	27.6	1.8	13.0	1.4	8.5	1.0	21.1	1.6	32.3	1.9	35.0	2.0	35.4	2.0
Male	34.8	2.7	27.0	2.5	10.7	1.7	6.4	1.2	16.9	2.3	28.4	2.8	34.4	3.0	33.9	2.8
Area of Residence																
Urban	32.0	2.0	27.1	1.8	12.7	1.3	7.7	1.0	19.7	1.6	29.9	1.9	34.0	1.9	33.6	1.9
Rural	44.7	4.0	30.1	3.4	11.7	2.3	9.5	2.0	20.4	2.9	38.6	3.8	40.1	4.7	42.0	4.9
Age Group																
18-29y	33.9	2.8	33.3	2.6	17.9	2.2	10.8	1.7	24.1	2.2	39.0	2.8	40.2	2.8	39.0	2.6
30-44y	32.9	2.8	28.3	2.7	12.0	2.0	6.4	1.3	18.3	2.2	30.0	2.8	35.0	2.9	33.1	2.6
45-59y	35.5	4.0	23.7	3.1	11.0	2.4	8.8	2.2	19.4	3.1	28.3	3.6	32.9	3.8	34.1	4.0
60-69y	40.7	5.4	21.4	4.4	3.9	1.9	3.4	1.6	18.6	4.7	23.6	4.7	26.4	5.0	31.5	5.2
70+y	28.2	5.2	15.8	4.4	3.2	2.0	4.3	1.8	10.1	3.0	18.4	3.7	26.1	4.7	31.3	5.3
Education Years																
0	43.8	4.6	28.9	4.0	12.3	3.4	10.7	3.0	21.8	3.6	37.9	4.2	44.3	4.4	44.4	4.4
1-5	38.3	2.8	30.2	2.5	12.6	1.8	8.2	1.4	18.8	2.0	31.1	2.4	35.0	2.6	39.7	2.7
6-11	32.5	2.6	28.2	2.5	12.2	1.9	8.2	1.4	22.2	2.4	34.2	2.6	36.3	2.8	32.5	2.8
12+	18.7	3.4	16.6	3.2	11.5	2.6	3.6	1.6	14.7	2.7	17.2	3.2	22.2	3.4	19.9	3.3
Income Quintiles																
Q1	45.9	3.7	34.0	3.1	15.8	2.5	9.8	2.1	24.8	2.8	41.9	3.5	47.2	3.7	46.5	4.1
Q2	48.8	4.0	38.7	3.6	16.2	2.9	12.7	2.1	24.9	3.4	41.4	3.6	43.9	3.4	46.5	3.5
Q3	33.2	3.5	28.2	3.2	13.0	2.5	7.8	1.6	17.9	2.8	31.8	3.5	33.8	3.6	33.1	3.4
Q4	26.8	3.6	22.6	3.0	10.4	2.2	6.5	1.9	19.7	3.1	25.2	3.2	26.7	3.2	30.1	3.9
Q5	18.5	2.6	15.9	2.5	8.1	1.9	3.6	1.4	12.8	2.4	18.4	3.0	24.6	3.3	20.7	3.1
Condition																
Child-Visit																
Fever	40.6	6.5	27.5	6.7	9.1	4.4	7.4	3.4	39.7	7.6	40.3	8.2	42.1	7.4	41.2	7.0
Childbirth	27.9	2.6	25.3	2.4	12.7	1.8	9.2	1.6	20.2	1.9	34.5	2.8	35.4	2.8	32.8	2.5
Arthritis	37.0	18.6	51.6	20.0	0.0	0.0	0.0	0.0	0.0	0.0	32.8	17.5	49.9	20.1	49.9	20.1
Asthma	38.6	12.8	11.2	8.7	0.0	0.0	0.0	0.0	17.4	11.0	23.5	11.6	42.9	12.9	40.1	13.1
Heart-Disease	40.7	8.7	27.0	7.8	4.3	3.6	4.2	2.6	11.8	4.8	13.7	4.9	33.4	8.5	25.9	6.7
Injury	33.6	7.2	30.0	6.9	11.2	5.0	5.2	2.6	18.2	6.0	29.9	6.9	40.0	7.7	36.8	7.1
Minor-Surgery	31.9	3.1	27.8	2.6	10.0	1.9	5.1	1.3	10.3	1.8	19.8	2.5	21.2	2.6	22.2	2.6
Other	39.9	3.2	29.2	2.7	16.3	2.3	10.4	1.9	26.4	2.9	39.1	3.0	43.9	3.0	47.8	3.3
Ownership																
Government	39.5	2.0	31.6	2.0	15.2	1.6	10.1	1.2	24.8	1.9	39.2	2.1	42.5	2.1	41.1	2.1
Private	26.3	2.5	21.1	2.1	8.0	1.4	4.6	1.1	12.7	1.6	19.7	2.3	24.0	2.4	26.5	2.6
NGO																
Other	34.5	12.8	37.6	13.1	13.7	8.6	6.7	5.3	8.1	5.4	14.1	8.0	21.6	10.6	21.7	9.4
Self-Assessed Health																
Very-Good	14.0	3.1	22.0	3.7	7.9	2.4	4.2	1.6	14.4	3.2	23.0	4.2	23.9	4.5	26.0	4.6
Good	28.9	2.8	22.1	2.3	10.1	1.8	4.9	1.2	13.9	1.9	27.1	2.5	29.5	2.5	28.0	2.4
Moderate	39.5	2.3	30.7	2.3	13.5	1.6	8.9	1.3	22.6	2.2	33.9	2.4	38.3	2.6	39.0	2.7
Bad	41.4	4.6	32.9	4.7	16.2	3.9	15.7	3.7	24.2	4.0	34.4	4.3	38.1	4.8	39.4	5.1
Very-Bad	45.5	7.8	33.2	7.5	15.5	5.8	7.8	4.1	36.0	7.4	42.4	8.3	55.1	7.5	54.3	8.9
TOTAL	34.1	1.7	27.4	1.6	12.2	1.2	7.8	0.9	19.8	1.3	31.1	1.6	34.8	1.7	34.9	1.7

The following table reports the percent of people perceiving poor responsiveness in hospital inpatient care facilities, where "poor" is defined as a rating of "Moderate", "Bad" or "Very bad" in questions Q7418-Q7432 which have 5 response options (including "good" and "very good".. Ratings for each of the eight domains of hospital inpatient care responsiveness (including 15 questions) by patients have been presented here. There are two questions each for seven of the eight domains; the domain of choice has only one question. The following questions from the survey have been used to determine patient assessment of each responsiveness domain:

- (1) *Prompt attention*: travel time (Q7418) and wait time (Q7419).
- (2) *Dignity*: talked respectfully (Q7420) and privacy (Q7421).
- (3) *Communication*: clear explanation (Q7422) and time for questions (Q7423).
- (4) *Autonomy*: treatment information (Q7424) and involvement (Q7425).
- (5) *Confidentiality*: talk privately (Q7426) and confidentiality of records (Q7427).
- (6) *Choice of health care provider*: Q7428.
- (7) *Basic amenities*: cleanliness (Q7429) and space (Q7430).
- (8) *Social support*: family visit (Q7431) and external contact (Q7432).

Results are reported for the total WHS sample (category: "TOTAL"), and by the following sample sub-groups: sex, area of residence, age group, years of education, income quintiles, reason for visit, ownership (of health facility), and self-assessed health. Mean values and standard errors (SE) are reported for each category.

Sub-groups common to other tables were constructed in the same manner. Common sub-groups include sex (Q1001), area of residence (Q0104), age group (regrouping of reported age in Q1002), years of education (Q1010) and income quintiles. To determine income and subsequently income quintiles, an asset index was constructed for each household using responses to section 0700 on "Permanent Income Indicators" from the WHS household questionnaire.

Ownership, condition and self-assessed health sub-groups were constructed uniquely for the responsiveness section's tables. There are four categories of ownership: "Operated by the government" (Government), "Privately operated" (Private), "NGO" and "Other". To construct the ownership sub-group, information was combined from (a) Q7204, Q7205 and Q7301 for those utilizing ambulatory services, and (b) Q7200, Q7201 and Q7401 for those utilizing hospital inpatient services. The sub-group "Condition" used information from Q7403 ("Which of the following best describes the reason for your [child's] last overnight stay?"). The eight categories of Q7403 include high fever, diarrhoea, or cough; childbirth; arthritis; asthma; heart disease; bodily injury; minor surgery; and other. Self-assessed health was constructed using information from Q2000 ("In general, how would you rate your health today as?") in the WHS. Respondents were asked to select one of the following five categories: "Very good", "Good", "Moderate", "Bad" and "Very bad".

7.5.2 Patient assessment of responsiveness domains for hospital inpatient services: percent reporting "Moderate", "Bad" or "Very bad" - 2

	Confidentiality		Confidentiality of records		Choice of health care provider		Cleanliness		Basic Amenities		Family Visit		Social Support	
	Talk Privately								Space				External Contact	
	%	SE	%	SE	%	SE	%	SE	%	SE	%	SE	%	SE
Sex														
Female	27.2	1.8	16.1	1.5	43.0	2.2	20.1	1.6	22.2	1.7	24.7	1.7	34.2	2.1
Male	20.4	2.2	11.3	1.9	41.0	2.7	15.1	2.0	22.9	2.5	25.5	2.6	36.4	2.8
Area of Residence														
Urban	24.2	1.6	13.5	1.4	39.7	2.0	18.3	1.6	22.6	1.7	23.7	1.5	33.3	1.9
Rural	29.7	4.1	20.0	3.6	50.9	5.2	20.2	3.2	23.8	3.4	30.0	3.9	41.2	4.7
Age Group														
18-29y	30.2	2.4	16.6	2.2	51.2	2.9	20.9	2.4	26.0	2.6	30.5	2.6	40.5	2.6
30-44y	24.8	2.4	13.8	2.2	40.5	2.8	16.7	2.1	20.7	2.5	22.8	2.6	35.6	3.0
45-59y	23.6	3.1	12.1	2.4	37.1	3.9	20.7	3.4	22.1	3.5	20.9	2.8	31.9	3.5
60-69y	16.3	4.4	16.3	5.0	35.5	5.1	17.9	4.3	22.3	4.5	28.1	5.2	28.2	4.7
70+y	18.4	4.2	12.5	3.5	34.1	5.2	10.7	3.4	16.1	3.8	17.4	4.2	24.6	4.7
Education Years														
0	33.9	3.9	15.6	3.3	56.4	4.5	22.2	3.8	26.6	4.2	25.7	4.4	37.2	4.6
1-5	26.5	2.2	17.4	2.2	45.2	2.9	18.2	2.1	20.8	2.3	25.2	2.3	35.6	2.7
6-11	26.4	2.3	15.5	2.1	43.9	2.7	20.2	2.2	26.3	2.5	26.8	2.3	36.8	2.6
12+	9.5	2.8	4.0	1.7	16.9	3.1	11.3	2.8	13.5	2.9	19.3	3.2	26.4	4.0
Income Quintiles														
Q1	34.2	3.4	19.1	3.2	52.2	4.1	23.7	3.0	26.4	3.4	26.7	3.7	40.2	3.8
Q2	33.5	3.5	19.6	3.2	56.9	3.6	20.8	3.0	28.0	3.4	29.8	3.4	45.7	4.1
Q3	25.5	3.2	17.6	3.1	39.8	3.8	18.3	2.8	24.1	3.0	24.7	3.0	37.9	3.6
Q4	20.3	3.0	11.3	2.4	37.8	4.1	17.1	2.8	19.8	3.4	23.0	3.3	26.7	3.2
Q5	12.9	2.5	6.2	2.1	22.7	3.1	13.5	2.8	16.8	2.7	20.1	2.6	24.3	3.2
Condition														
Child-Visit														
Fever	28.6	6.0	14.0	5.0	60.2	6.9	21.6	6.8	29.4	6.9	25.2	6.5	26.9	6.0
Childbirth	28.6	2.6	16.7	2.1	46.9	3.0	18.5	2.4	23.6	2.7	26.1	2.5	36.9	2.8
Arthritis	44.8	19.5	29.5	18.5	47.2	19.7	0.0	0.0	0.0	0.0	0.0	0.0	42.0	19.6
Asthma	9.1	8.6	0.0	0.0	44.0	12.9	23.8	11.8	6.8	4.6	42.1	13.2	50.2	12.9
Heart-Disease	10.9	4.4	11.7	5.4	35.1	8.2	8.8	4.7	23.0	6.6	29.1	7.0	45.5	8.5
Injury	26.1	5.9	12.1	4.9	57.5	7.7	22.0	6.1	28.1	6.8	20.3	6.2	42.0	7.3
Minor-Surgery	15.1	2.2	8.8	2.1	24.1	2.6	16.2	2.5	15.5	2.3	22.6	2.6	27.3	2.7
Other	31.9	2.7	19.0	2.4	49.8	3.2	20.7	2.4	26.6	2.9	25.6	2.7	37.7	3.3
Ownership														
Government	29.8	1.8	17.7	1.8	51.3	2.3	23.4	1.9	27.9	2.2	28.1	2.0	39.1	2.3
Private	18.3	2.1	10.2	1.5	29.4	2.5	11.4	1.7	14.8	2.0	19.9	1.9	29.1	2.4
NGO														
Other	15.6	9.0	14.8	9.3	38.7	12.3	11.8	8.3	14.5	8.9	43.7	15.2	23.1	11.0
Self-Assessed Health														
Very-Good	17.3	3.4	8.5	2.7	30.6	5.0	12.4	3.4	17.6	3.9	17.1	3.9	26.8	4.5
Good	17.5	2.1	11.5	1.8	37.7	2.8	15.9	2.2	16.2	2.1	23.5	2.3	33.8	2.8
Moderate	27.5	2.3	17.3	2.0	44.0	2.5	19.9	2.1	26.2	2.1	25.4	2.0	35.3	2.4
Bad	36.0	4.5	16.2	3.8	51.3	5.3	22.5	3.8	30.7	4.6	32.9	4.4	40.7	4.9
Very-Bad	47.0	8.6	22.3	8.2	64.8	7.6	27.0	7.1	22.4	6.5	29.9	6.9	43.5	7.8
TOTAL	25.0	1.4	14.5	1.3	42.3	1.8	18.5	1.4	22.4	1.5	25.0	1.4	34.9	1.7

The following table reports the percent of people perceiving poor responsiveness in hospital inpatient care facilities, where "poor" is defined as a rating of "Moderate", "Bad" or "Very bad" in questions Q7418-Q7432 which have 5 response options (including "good" and "very good".. Ratings for each of the eight domains of hospital inpatient care responsiveness (including 15 questions) by patients have been presented here. There are two questions each for seven of the eight domains; the domain of choice has only one question. The following questions from the survey have been used to determine patient assessment of each responsiveness domain:

- (1) *Prompt attention*: travel time (Q7418) and wait time (Q7419).
- (2) *Dignity*: talked respectfully (Q7420) and privacy (Q7421).
- (3) *Communication*: clear explanation (Q7422) and time for questions (Q7423).
- (4) *Autonomy*: treatment information (Q7424) and involvement (Q7425).
- (5) *Confidentiality*: talk privately (Q7426) and confidentiality of records (Q7427).
- (6) *Choice of health care provider*: Q7428.
- (7) *Basic amenities*: cleanliness (Q7429) and space (Q7430).
- (8) *Social support*: family visit (Q7431) and external contact (Q7432).

Results are reported for the total WHS sample (category: "TOTAL"), and by the following sample sub-groups: sex, area of residence, age group, years of education, income quintiles, reason for visit, ownership (of health facility), and self-assessed health. Mean values and standard errors (SE) are reported for each category.

Sub-groups common to other tables were constructed in the same manner. Common sub-groups include sex (Q1001), area of residence (Q0104), age group (regrouping of reported age in Q1002), years of education (Q1010) and income quintiles. To determine income and subsequently income quintiles, an asset index was constructed for each household using responses to section 0700 on "Permanent Income Indicators" from the WHS household questionnaire.

Ownership, condition and self-assessed health sub-groups were constructed uniquely for the responsiveness section's tables. There are four categories of ownership: "Operated by the government" (Government), "Privately operated" (Private), "NGO" and "Other". To construct the ownership sub-group, information was combined from (a) Q7204, Q7205 and Q7301 for those utilizing ambulatory services, and (b) Q7200, Q7201 and Q7401 for those utilizing hospital inpatient services. The sub-group "Condition" used information from Q7403 ("Which of the following best describes the reason for your [child's] last overnight stay?"). The eight categories of Q7403 include high fever, diarrhoea, or cough; childbirth; arthritis; asthma; heart disease; bodily injury; minor surgery; and other. Self-assessed health was constructed using information from Q2000 ("In general, how would you rate your health today as?") in the WHS. Respondents were asked to select one of the following five categories: "Very good", "Good", "Moderate", "Bad" and "Very bad".

7.6 Importance of different domains of responsiveness: percent reporting "Extremely Important"

	Prompt Attention		Dignity		Communication		Autonomy		Confidentiality		Choice		Basic Amenities		Social Support	
	%	SE	%	SE	%	SE	%	SE	%	SE	%	SE	%	SE	%	SE
Sex																
Female	46.0	1.4	52.7	1.4	56.3	1.4	41.0	1.3	46.8	1.3	42.5	1.3	56.2	1.4	42.0	1.2
Male	48.4	1.5	50.0	1.5	54.1	1.6	40.4	1.4	43.9	1.5	37.0	1.4	57.7	1.4	41.7	1.4
Area of Residence																
Urban	49.0	1.2	53.8	1.3	58.1	1.3	43.6	1.1	48.1	1.2	41.8	1.2	59.5	1.2	43.9	1.2
Rural	38.0	2.9	39.4	3.2	40.8	3.5	26.8	3.2	30.9	3.2	31.4	3.0	44.4	3.5	31.2	3.3
Age Group																
18-29y	49.8	1.8	53.2	1.9	58.3	1.7	42.7	1.6	49.3	1.7	39.0	1.7	62.3	1.8	43.6	1.7
30-44y	50.3	1.6	54.9	1.6	58.0	1.7	43.7	1.5	50.6	1.6	44.6	1.5	59.7	1.6	45.8	1.6
45-59y	45.0	1.8	47.0	2.1	52.1	2.1	39.0	1.7	39.5	1.9	39.8	1.8	53.3	1.9	37.3	1.8
60-69y	40.6	2.8	49.0	2.9	51.4	2.7	35.5	2.8	39.7	2.8	36.1	2.9	50.4	2.9	38.3	2.7
70+y	34.8	2.7	45.7	3.3	44.6	3.2	31.0	2.8	31.9	2.8	28.1	2.7	39.2	3.0	35.6	3.2
Education Years																
0	32.1	2.5	34.8	2.5	39.4	2.6	24.6	2.2	26.0	2.3	27.8	2.4	36.2	2.6	31.1	2.5
1-5	40.1	1.6	42.4	1.7	46.2	1.7	33.9	1.5	36.9	1.6	35.3	1.4	47.5	1.7	37.4	1.7
6-11	51.3	1.6	55.9	1.6	61.3	1.5	45.4	1.5	51.3	1.6	43.5	1.5	64.7	1.5	45.6	1.6
12+	64.7	2.1	74.8	2.0	74.4	1.8	57.0	2.1	66.1	2.0	52.6	2.3	76.0	1.7	51.6	2.2
Income Quintiles																
Q1	34.8	2.2	37.1	2.6	39.3	2.6	27.5	2.5	30.6	2.3	29.9	2.2	40.8	2.7	32.1	2.5
Q2	43.7	2.0	42.5	2.1	49.7	2.0	36.5	2.0	39.1	2.0	37.7	2.0	50.5	2.1	38.9	2.1
Q3	45.1	1.8	49.3	1.8	52.9	1.8	39.7	1.6	44.6	1.7	38.2	1.6	56.1	1.9	41.7	1.9
Q4	50.0	2.0	54.7	2.1	58.7	2.1	41.8	2.0	48.0	2.0	40.0	2.0	59.8	2.1	42.9	2.0
Q5	58.0	2.0	67.6	2.0	71.0	1.8	54.6	1.9	59.2	2.1	51.2	2.1	72.4	1.6	50.9	2.0
Ownership																
Government	41.2	1.5	44.9	1.6	48.9	1.5	36.4	1.4	39.6	1.5	35.9	1.4	51.5	1.6	38.0	1.5
Private	54.2	1.7	60.9	1.8	65.0	1.7	47.0	1.6	53.7	1.7	45.6	1.8	65.4	1.5	46.5	1.6
NGO																
Other	47.8	9.8	39.9	8.9	38.8	8.9	33.2	8.9	40.8	8.8	47.5	9.4	58.0	9.7	40.5	8.7
Self-Assessed Health																
Very-Good	56.8	2.2	64.4	2.3	65.5	2.4	52.7	2.4	57.5	2.4	47.7	2.3	68.4	2.1	49.5	2.4
Good	48.5	1.5	53.0	1.6	57.4	1.6	41.6	1.5	48.0	1.5	41.2	1.5	59.0	1.5	43.1	1.4
Moderate	43.9	1.5	46.5	1.7	51.2	1.5	36.6	1.5	40.5	1.4	37.2	1.4	52.4	1.6	38.5	1.6
Bad	37.7	3.0	43.7	3.3	45.2	3.2	32.1	3.1	34.7	2.9	32.3	3.0	46.8	3.2	37.0	3.3
Very-Bad	38.9	5.6	43.9	5.6	48.7	5.7	40.1	5.0	36.7	5.5	37.4	5.4	47.7	5.7	39.6	5.6
Type of Care																
Ambulatory-Care	47.1	1.4	53.1	1.5	56.4	1.4	41.3	1.3	45.7	1.4	40.5	1.3	57.8	1.4	41.8	1.3
Not-Applicable																
Inpatient-Care	47.1	3.4	45.4	3.3	52.4	3.6	38.3	3.2	40.9	3.4	37.6	3.2	57.1	3.2	46.4	3.3
Not-Applicable																
Non-Users	47.3	1.7	49.2	1.7	53.6	1.8	40.2	1.6	45.6	1.7	39.5	1.6	54.9	1.7	41.7	1.7
TOTAL	47.1	1.2	51.4	1.2	55.3	1.2	40.7	1.1	45.5	1.2	40.0	1.1	56.9	1.2	41.9	1.1

This table shows the percent of people who rated a responsiveness domain as "Extremely Important". All survey respondents were queried on their perception of the importance of each of the eight responsiveness domains in section 7100 of the WHS where each domain was described in detail (Q7100-Q7107).

Respondents were asked to say whether the domain was "Extremely Important", "Very Important", "Moderately Important", "Slightly Important" or "Not

Important".

Results are reported for the total WHS sample (category: "TOTAL"), and by the following sample sub-groups: sex, area of residence, age group, years of education, income quintiles, ownership (of health facility), self-assessed health, and type of care. Mean values and standard errors (SE) are reported for each category.

Sub-groups common to other tables were constructed in the same manner. Common sub-groups include sex (Q1001), area of residence (Q0104), age group (regrouping of reported age in Q1002), years of education (Q1010) and income quintiles. To determine income and subsequently income quintiles, an asset index was constructed for each household using responses to section 0700 on "Permanent Income Indicators" from the WHS household questionnaire.

Ownership, self-assessed health and type of care sub-groups were constructed uniquely for the responsiveness section's tables. There are four categories of ownership: "Operated by the government" (Government), "Privately operated" (Private), "NGO" and "Other". To construct the ownership sub-group, information was combined from (a) Q7204, Q7205 and Q7301 for those utilizing ambulatory services, and (b) Q7200, Q7201 and Q7401 for those utilizing hospital inpatient services. Self-assessed health was constructed using information from Q2000 ("In general, how would you rate your health today as?") in the WHS. Respondents were asked to select one of the following five categories: "Very good", "Good", "Moderate", "Bad" and "Very bad". Type of care is a constructed sample sub-group combining information from Q7000, Q7001 and Q7016. There are five categories of type of care: "Ambulatory adult", "Ambulatory child", "Inpatient adult", "Inpatient child" and "Non users".

8.0 Expenditure Background Indicators (2002)

GDP per capita (\$)	2,614
Total health expenditure per capita (\$)	206
Total population (000)	176,257
Life expectancy at birth (Both sexes)	68.9
Life expectancy at birth (male)	65.7
Life expectancy at birth (female)	72.3
Healthy life expectancy at birth (Both sexes)	59.8
Healthy life expectancy at birth (Male)	57.2
Healthy life expectancy at birth (Female)	62.4
Government funded health expenditure as a percentage of total health expenditure	45.9
Social security funded health expenditure as a percentage of total health expenditure	0
Private health insurance premiums as a percentage of total health expenditure	19.4
Out-of-pocket payment as a percentage of total health expenditure	34.8

8.1 Distribution of health payments across different population groups

	Mean Household expenditure (EXP) in local currency	% Poor	% Impoverished	% Catastrophic	OOP % EXP	OOP % non-subsistence spending	Mean OOP in local currency
Catastrophic							
No	749	25.1	1.3		5.8	9.4	58
Yes	679	22.8	19.9		35.6	59.5	303
Poor							
No	919		5.7	16.5	12.0	18.5	125
Yes	184		0.0	14.8	6.5	14.4	12
Insurance							
No	651	26.3	4.4	16.6	10.5	17.7	88
Yes	1,289	14.4	3.7	12.8	11.2	16.3	158
Residence							
rural	378	51.6	7.8	26.5	10.9	22.7	61
urban	821	18.5	3.5	13.7	10.6	16.3	105
Income_Quintile							
1st(poorest)	165	100.0	0.0	15.2	6.6	14.3	10
2nd	317	23.3	16.7	17.1	8.3	17.8	27
3rd	462	0.0	3.8	18.0	10.6	19.2	49
4th	731	0.0	0.6	16.1	12.3	18.1	91
5th(richest)	2,014	0.0	0.3	14.0	15.4	18.1	308
total	738	24.7	4.3	16.1	10.6	17.5	97

OOP: Out of pocket

Household consumption expenditure (EXP) comprises both monetary and in-kind payment on all goods and services and the money value of the consumption of home-made products.

Poor - a household is considered poor when its total household expenditure is smaller than its subsistence spending
Impoverishment - a non-poor household is impoverished by health payment when it becomes poor after paying for health services.

Catastrophic health expenditure occurs when a household's total out-of-pocket health payments equals or exceeds 40% of the households capacity to pay or non-subsistence spending.

Out of pocket health payments (OOP) refer to payments made by households at the point they receive health services. It includes doctor's consultation fees, purchases of medication and hospital bills. Spending on alternative and/or traditional medicine is included. Expenditure on health related transportation and special nutrition is excluded. Insurance reimbursements are also excluded.

Subsistence spending - household subsistence spending is the minimum requirement to maintain a basic life in a society. A poverty line is used in the analysis as subsistence spending.

Food expenditure is the amount spent on all foodstuffs by the household plus the value of the family's own food production consumed within the household. It excludes expenditure on alcoholic beverages, tobacco and food consumption outside the home (e.g hotel and restaurants).

Household capacity to pay - is defined as a household's non-subsistence spending.

8.2 Percent distribution of structure of out-of-pocket health payments

	Inpatient	Outpatient	Traditional	Drugs	Other	Total
Catastrophic						
No	0.8	5.1	1.6	53.1	39.3	100
Yes	7.9	6.4	2.0	33.2	50.5	100
Poor						
No	4.5	5.9	1.9	42.0	45.8	100
Yes	0.1	2.9	0.4	81.5	15.2	100
Insurance						
No	3.7	5.7	2.0	44.5	44.0	100
Yes	6.8	5.9	1.0	38.2	48.1	100
Residence						
rural	6.3	11.9	1.6	44.0	36.2	100
urban	4.1	4.9	1.8	43.0	46.1	100
Income_Quintile						
1st(poorest)	0.2	2.3	0.4	80.7	16.5	100
2nd	1.6	3.5	1.9	70.5	22.5	100
3rd	0.5	5.4	0.8	64.8	28.5	100
4th	1.3	7.6	0.6	51.3	39.2	100
5th(richest)	6.3	5.6	2.4	33.6	52.1	100
total	4.4	5.8	1.8	43.1	44.9	100

8.3 Financial sources used by households for paying for health services

	Savings	Sold Items	Borrow from relatives &	Borrow from others	Health insurance	Current Income	Other
OOP%non_subsistence_spending							
less than 10%	3.2	2.4	7.3	2.2	4.5	71.5	2.2
10-20%	5.9	2.5	11.6	2.3	7.5	88.7	2.4
20-40%	7.5	4.8	14.1	4.8	5.7	87.3	4.7
above 40%	8.6	8.9	18.8	5.5	3.2	87.4	5.4
Hospitalization							
No	4.1	2.9	9.0	2.7	4.5	78.0	2.6
Yes	8.5	7.0	17.0	4.8	6.4	83.1	4.9
Insurance							
No	4.9	3.8	10.8	3.2	4.1	78.6	2.5
Yes	7.1	4.2	11.5	3.2	10.4	83.2	7.0
Residence							
rural	6.1	6.6	11.3	4.6	1.8	76.0	1.9
urban	4.9	3.2	10.9	2.9	5.6	79.9	3.4
Income_Quintile							
1st(poorest)	2.3	6.2	11.7	4.4	0.4	66.9	1.6
2nd	3.3	3.9	10.9	3.8	1.5	75.5	2.4
3rd	5.0	3.3	11.9	3.0	2.5	79.8	2.6
4th	7.2	3.2	11.4	2.5	5.7	85.9	3.5
5th(richest)	8.0	2.7	8.8	2.4	14.4	88.0	5.7
total	5.2	3.9	10.9	3.2	4.9	79.2	3.1

8.4 Insurance Coverage

	Insured	SE	Mandatory Insurance	SE	Voluntary Insurance	SE	Insured as dependent	SE	Mandatory and Voluntary	SE
Q1(poorest)	15.1	4.8	3.0	1.3	1.0	0.7	1.4	1.0	1.9	1.4
Q2	10.3	1.8	6.4	1.6	2.7	1.0	2.4	1.0	4.0	1.6
Q3	17.2	2.8	13.8	2.4	10.5	2.9	10.6	3.5	10.8	3.5
Q4	16.4	2.2	20.6	2.9	19.6	3.6	18.8	4.0	25.1	4.5
Q5(richest)	40.9	6.6	56.3	4.0	66.3	5.7	66.8	6.0	58.2	5.5
Total	100		100		100		100		100	
Number	1,745.0		545.0		535.0		307.0		278.0	

