



征收评定会费的状况

总干事的报告

本报告更新了总干事在1998年1月执行委员会第一〇一届会议上同一议题的报告（文件EB101/25），旨在帮助卫生大会审议本组织的财政状况。

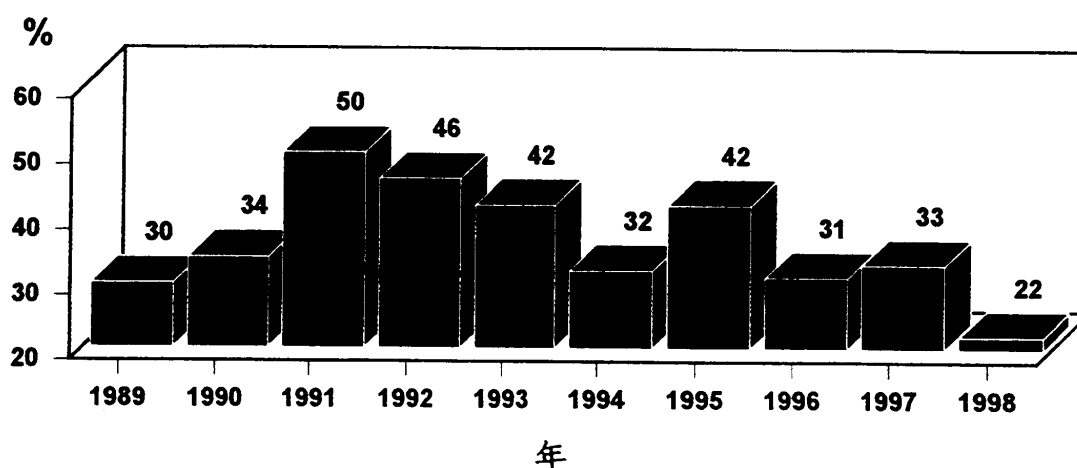
1. 附表列述了截至1998年4月30日的会费征收状况。根据WHA16.20号决议的要求，总干事将就根据WHA8.13号决议第2段规定可能暂时中止其表决权的会员国提出另一份报告。

1998年会费额的征收（见附表第2部分，第2页和第3页）

2. 1998年有效工作预算的会费征收额为 90 830 497 美元，即占会员国会费额的 21.7%，而1997年和1996年同一时期的征收率分别为33.4%和31.1%。1998年最初四个月的会费征收百分率系过去十年中同一时期最低百分率。

图 1

截止4月底的会费征收百分率
1989至1998



会费欠额

欠费总额

3. 在1998年1月1日，会员国拖欠1998年以前各年应缴会费的总欠款额为179 676 194美元。在该日期以后收到款额为18 081 727美元。到1998年4月30日，欠款额降至161 594 467美元。1997年4月30日时的相应欠款额为164 354 198美元。这些款额包括卫生大会授权特别安排及一个会员国非预算会费的欠额。

卫生大会授权特别安排的会费（第3部分，第4页）

3.1 报表的这一部分说明了按WHA33.7、WHA37.6、WHA39.16、WHA45.23、WHA50.22和WHA50.30号决议规定的某些会员国分期付款状况，其总额为6 166 105美元。

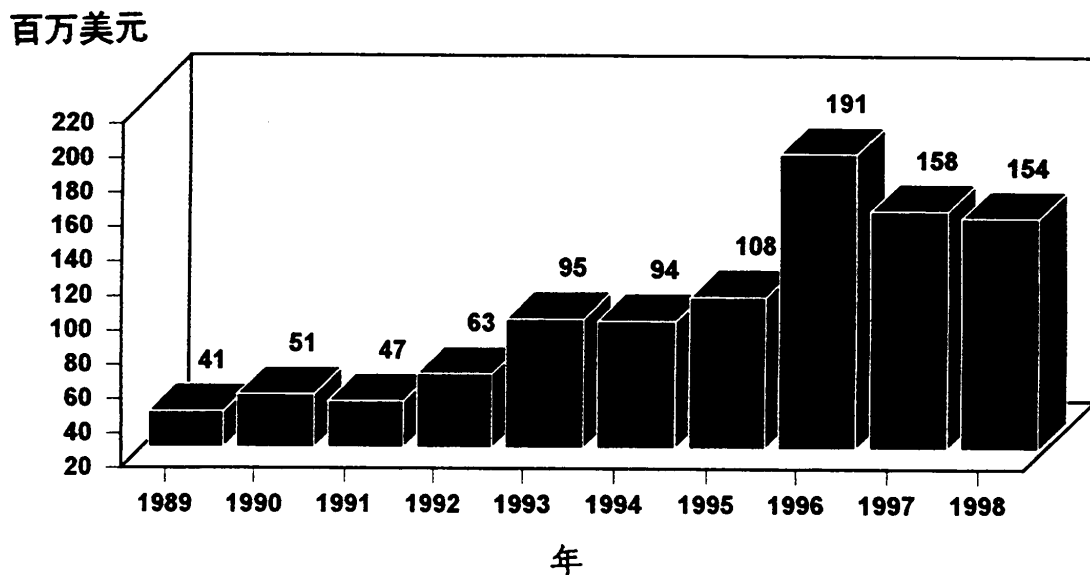
其他会员国对有效工作预算和非预算会费的欠款额（第4部分，第5页和第6页）

3.2 报表的这一部分说明了会员国在1998年以前各年中，对有效工作预算的会费欠款，总额为153 908 827美元，以及一个会员国非预算会费额1 519 535美元。下面

图2显示1996年结束的8年期未缴纳的各年欠费的上升趋势，造成该年前所未有的最高欠费额1.91亿美元（不包括卫生大会作出特别安排和一个会员国未预算会费的欠额）。但是，1997和1998年有所改进，1997年未缴纳的以前各年欠费额达1.58亿美元，1998年进一步改善，未缴纳的以前各年欠费额达1.54亿美元。其中9870万美元，或64%，系3个会员国的欠费额。

图 2

截止4月底未向正常预算缴纳的以前各年欠费额
1989至1998



提前收到的1999年会费（第5部分，第7页）

3.3 报告的这一部分显示提前收到的会费额。

需卫生大会特别注意的事项

4. 卫生大会拟可考虑通过执行委员会在EB101.R17号决议中建议的决议文本。

= = =



STATEMENT SHOWING THE STATUS OF COLLECTION OF ANNUAL
REGULAR BUDGET CONTRIBUTIONS AS AT 30 APRIL 1998

(Expressed in US dollars)

TABLEAUX INDIQUANT L'ETAT DU RECOUVREMENT DES CONTRIBUTIONS
ANNUELLES AU BUDGET REGULIER A LA DATE DU 30 AVRIL 1998

(En dollars des Etats-Unis)

1. SUMMARY

As of 30 April 1998, the rate of collection of annual contributions in respect of the regular budget is lower than in 1997. Out of a total amount of \$ 418 751 000, \$ 90 830 497 or 21.69% has been collected, as compared to 33.35% in 1997. Whereas 49 Members had paid their contributions in full and 29 Members in part, 115 Members had not yet paid any part of their assessment. Advance payments in respect of 1999 contributions are listed on page 7 of this statement.

1. RESUME

Au 30 avril 1998, le taux de recouvrement des contributions annuelles au budget régulier est moins élevé qu'en 1997. Pour un total de \$ 418 751 000 mis en recouvrement les encaissements atteignent \$ 90 830 497 soit 21.69% contre 33.35% en 1997. Alors que 49 Membres ont versé leur contribution en totalité et 29 en partie, 115 Membres n'ont encore fait aucun versement. Les paiements en avance des contributions pour 1999 figurent en page 7 de ce rapport.

Payments may be made as follows:

Les sommes en cause peuvent être payées:

(1) in US dollars to: or (2) in Swiss francs to:
en dollars des Etats-Unis à: ou en francs suisses à:

World Health Organization
Account No.1 ABA No.021080083
The Federal Reserve Bank of New York
33 Liberty Street
New York, N.Y. 10045
United States Of America

Organisation mondiale de la Santé
Compte No.44032-8-32
Banque Nationale Suisse
8022 Zurich
Suisse

or (3) partly in US dollars as in (1) above, and partly in Swiss francs
as in (2) above.

ou *en partie en dollars des Etats-Unis comme en (1) ci-dessus, et
en partie en francs suisses comme en (2) ci-dessus.*

**2. STATUS OF COLLECTION OF CONTRIBUTIONS IN RESPECT
OF THE 1998 ASSESSMENTS**

2. ETAT DU RECOUVREMENT DES CONTRIBUTIONS FIXEES POUR 1998

Members and Associate Members	Assessments Sommes fixées (US\$)	Cash receipts and credits given Encaissements et crédits bonifiés (US\$)	Balances due Sommes restant à payer (US\$)	Membres et Membres associés
I. Contributions in respect of the Effective Working Budget				I. Contributions relatives au Budget effectif
AFGHANISTAN	41,860	-	41,860	AFGHANISTAN
ALBANIA	40,950	40,950	-	ALBANIE
ALGERIA	654,515	-	654,515	ALGERIE
ANDORRA	41,860	-	41,860	ANDORRE
ANGOLA	41,790	41,790	-	ANGOLA
ANTIGUA AND BARBUDA	41,860	-	41,860	ANTIGUA-ET-BARBUDA
ARGENTINA	1,961,610	-	1,961,610	ARGENTINE
ARMENIA	209,280	-	209,280	ARMENIE
AUSTRALIA	5,917,840	5,917,840	-	AUSTRALIE
AUSTRIA	3,507,570	3,171,875	335,695	AUTRICHE
AZERBAIJAN	460,420	-	460,420	AZERBAIDJAN
BAHAMAS	81,675	44,975	36,700	BAHAMAS
BAHRAIN	81,205	-	81,205	BAHREIN
BANGLADESH	40,820	40,820	-	BANGLADESH
BARBADOS	41,065	-	41,065	BARBADE
BELARUS	1,130,120	-	1,130,120	BELARUS
BELGIUM	4,119,845	-	4,119,845	BELGIQUE
BELIZE	40,960	-	40,960	BELIZE
BENIN	41,030	-	41,030	BENIN
BHUTAN	40,855	40,855	-	BHOUTAN
BOLIVIA	41,850	-	41,850	BOLIVIE
BOSNIA AND HERZEGOVINA	41,860	-	41,860	BOSNIE-HERZEGOVINE
BOTSWANA	40,955	40,955	-	BOTSWANA
BRAZIL	6,655,190	-	6,655,190	BRESIL
BRUNEI DARUSSALAM	81,120	-	81,120	BRUNEI DARUSSALAM
BULGARIA	334,820	-	334,820	BULGARIE
BURKINA FASO	41,860	-	41,860	BURKINA FASO
BURUNDI	41,860	-	41,860	BURUNDI
CAMBODIA	41,860	-	41,860	CAMBODGE
CAMEROON	41,860	16,647	25,213	CAMEROUN
CANADA	12,483,795	12,483,795	-	CANADA
CAPE VERDE	41,855	-	41,855	CAP-VERT
CENTRAL AFRICAN REPUBLIC	41,860	-	41,860	REPUBLIQUE CENTRAFRICAINE
CHAD	41,860	-	41,860	TCHAD
CHILE	334,845	334,845	-	CHILI
CHINA	2,988,850	-	2,988,850	CHINE
COLOMBIA	407,405	288,724	118,681	COLOMBIE
COMOROS	41,860	-	41,860	COMORES
CONGO	226,860	-	226,860	CONGO
COOK ISLANDS	41,345	510	40,835	ILES COOK
COSTA RICA	41,530	41,530	-	COSTA RICA
COTE D'IVOIRE	40,545	40,545	-	COTE D'IVOIRE
CROATIA	376,700	94,175	282,525	CROATIE
CUBA	209,280	140,000	69,280	CUBA
CYPRUS	123,245	123,245	-	CHYPRE
CZECH REPUBLIC	978,715	326,238	652,477	REPUBLIQUE TCHEQUE
DEMOCRATIC PEOPLE'S REP. OF KOREA	204,070	204,070	-	REP. POPULAIRE DEM. DE COREE
DEMOCRATIC REPUBLIC OF THE CONGO	41,835	-	41,835	REPUBLIQUE DEMOCRATIQUE DU CONGO
DENMARK	2,904,600	2,904,600	-	DANEMARK
DJIBOUTI	41,860	-	41,860	DJIBOUTI
DOMINICA	41,860	-	41,860	DOMINIQUE
DOMINICAN REPUBLIC	41,860	-	41,860	REPUBLIQUE DOMINICAINE
ECUADOR	83,710	-	83,710	EQUATEUR
EGYPT	327,290	327,290	-	EGYPTE
EL SALVADOR	41,470	41,470	-	EL SALVADOR
EQUATORIAL GUINEA	41,860	-	41,860	GUINEE EQUATORIALE
ERITREA	40,910	40,910	-	ERYTHREE
ESTONIA	167,420	-	167,420	ESTONIE
ETHIOPIA	40,825	40,825	-	ETHIOPIE
FIJI	40,940	40,940	-	FIDJI
FINLAND	2,494,615	2,494,615	-	FINLANDE
FRANCE	27,027,625	328,120	26,699,505	FRANCE
GABON	41,860	1,624	40,236	GABON
GAMBIA	41,860	-	41,860	GAMBIE
GEORGIA	460,420	-	460,420	GEORGIE
GERMANY	36,774,875	-	36,774,875	ALLEMAGNE
GHANA	41,245	-	41,245	GHANA
GREECE	1,516,700	1,516,700	-	GRECE
GRENADA	41,860	-	41,860	GRENADE
GUATEMALA	83,710	1,089	82,621	GUATEMALA
GUINEA	41,850	-	41,850	GUINEE
GUINEA-BISSAU	41,860	-	41,860	GUINEE-BISSAU
GUYANA	40,825	-	40,825	GUYANA
HAITI	41,860	-	41,860	HAITI
HONDURAS	41,580	-	41,580	HONDURAS
HUNGARY	569,640	569,640	-	HONGRIE
ICELAND	123,690	123,690	-	ISLANDE
INDIA	1,239,260	619,630	619,630	INDE
INDONESIA	570,305	6,680	563,625	INDONESIE
IRAN (ISLAMIC REPUBLIC OF)	1,841,680	-	1,841,680	IRAN (REPUBLIQUE ISLAMIQUE D')
IRAQ	585,990	-	585,990	IRAQ
IRELAND	819,070	819,070	-	IRLANDE
ISRAEL	1,064,755	1,064,755	-	ISRAEL
ITALY	21,252,350	-	21,252,350	ITALIE
JAMAICA	41,400	574	40,826	JAMAIQUE
JAPAN	63,223,355	-	63,223,355	JAPON
JORDAN	40,940	-	40,940	JORDANIE
KAZAKSTAN	795,270	-	795,270	KAZAKSTAN
KENYA	41,460	-	41,460	KENYA
KIRIBATI	40,890	40,890	-	KIRIBATI
KUWAIT	773,260	773,260	-	KOWEIT
KYRGYZSTAN	125,570	-	125,570	KIRGHIZISTAN
LAO PEOPLE'S DEMOCRATIC REPUBLIC	44,430	-	44,430	REP. DEMOCRATIQUE POPULAIRE LAO
LATVIA	334,850	-	334,850	LETTONIE
LEBANON	41,570	-	41,570	LIBAN
LESOTHO	40,850	-	40,850	LESOTHO
LIBERIA	41,860	-	41,860	LIBERIA
LIBYAN ARAB JAMAHIRIYA	837,130	-	837,130	JAMAHIRIYA ARABE LIBYENNE
LITHUANIA	334,850	-	334,850	LITUANIE
LUXEMBOURG	286,490	286,490	-	LUXEMBOURG
MADAGASCAR	41,860	-	41,860	MADAGASCAR
MALAWI	41,415	-	41,415	MALAWI

**2. STATUS OF COLLECTION OF CONTRIBUTIONS IN RESPECT
OF THE 1998 ASSESSMENTS (Concluded)**

2. ETAT DU RECOUVREMENT DES CONTRIBUTIONS FIXEES POUR 1998 (Fin)

Members and Associate Members	Assessments Sommes fixées (US\$)	Cash receipts and credits given Encaissements et crédits bonifiés (US\$)	Balances due Sommes restant à payer (US\$)	Membres et Membres associés
MALAYSIA	574,245	574,245	-	MALAISIE
MALDIVES	40,875	-	40,875	MALDIVES
MALI	41,845	-	41,845	MALI
MALTA	40,835	40,835	-	MALTE
MARSHALL ISLANDS	41,855	-	41,855	ILES MARSHALL
MAURITANIA	41,860	-	41,860	MAURITANIE
MAURITIUS	40,810	40,810	-	MAURICE
MEXICO	3,262,605	1	3,262,604	MEXIQUE
MICRONESIA (FEDERATED STATES OF)	41,370	40,125	1,245	MICRONESIE (ETATS FEDERES DE)
MONACO	40,860	40,860	-	MONACO
MONGOLIA	40,885	-	40,885	MONGOLIE
MOROCCO	124,015	-	124,015	MAROC
MOZAMBIQUE	40,935	40,935	-	MOZAMBIQUE
MYANMAR	40,820	40,820	-	MYANMAR
NAMIBIA	40,935	40,935	-	NAMIBIE
NAURU	41,855	-	41,855	NAURU
NEPAL	40,875	-	40,875	NEPAL
NETHERLANDS	6,374,760	6,374,760	-	PAYS-BAS
NEW ZEALAND	938,490	938,490	-	NOUVELLE-ZELANDE
NICARAGUA	41,855	-	41,855	NICARAGUA
NIGER	41,860	-	41,860	NIGER
NIGERIA	460,205	-	460,205	NIGERIA
NIUE	41,795	-	41,795	NIUE
NORWAY	2,247,240	2,247,240	-	NORVEGE
OMAN	164,285	164,285	-	OMAN
PAKISTAN	249,975	10,201	239,774	PAKISTAN
PALAU	41,420	-	41,420	PALAU
PANAMA	41,860	-	41,860	PANAMA
PAPUA NEW GUINEA	41,265	-	41,265	PAPOUASIE-NOUVELLE-GUINEE
PARAGUAY	41,525	-	41,525	PARAGUAY
PERU	251,130	-	251,130	PEROU
PHILIPPINES	245,255	450	244,805	PHILIPPINES
POLAND	1,337,390	-	1,337,390	PLOGNE
PORTUGAL	1,113,675	-	1,113,675	PORTUGAL
PUERTO RICO	41,720	-	41,720	PORTO RICO
QATAR	166,885	-	166,885	QATAR
REPUBLIC OF KOREA	3,279,820	-	3,279,820	REPUBLIQUE DE COREE
REPUBLIC OF MOLDOVA	334,850	-	334,850	REPUBLIQUE DE MOLDOVA
ROMANIA	627,840	-	627,840	ROUMANIE
RUSSIAN FEDERATION	17,579,750	-	17,579,750	FEDERATION DE RUSSIE
RHANDA	41,860	41,570	290	RHANDA
SAINT KITTS AND NEVIS	40,935	40,935	-	SAINT-KITTS-ET-NEVIS
SAINT LUCIA	40,810	510	40,300	SAINTE-LUCIE
SAINT VINCENT AND THE GRENADINES	41,810	-	41,810	SAINT-VINCENT-ET-GRENADINES
SAMOA	40,945	40,945	-	SAMOA
SAN MARINO	40,930	40,930	-	SAINT-MARIN
SAO TOME AND PRINCIPE	40,925	-	40,925	SAO TOME-ET-PRINCIPE
SAUDI ARABIA	2,927,220	-	2,927,220	ARABIE SAOUDITE
SENEGAL	41,345	2,713	38,632	SENEGAL
SEYCHELLES	41,410	-	41,410	SEYCHELLES
SIERRA LEONE	41,340	-	41,340	SIERRA LEONE
SINGAPORE	575,510	373,796	201,714	SINGAPOUR
SLOVAKIA	324,630	324,630	-	SLOVAQUIE
SLOVENIA	285,515	-	285,515	SLOVENIE
SOLOMON ISLANDS	41,860	-	41,860	ILES SALOMON
SOMALIA	41,860	-	41,860	SOMALIE
SOUTH AFRICA	1,259,630	1,244,227	15,403	AFRIQUE DU SUD
SPAIN	9,601,400	9,601,400	-	ESPAGNE
SRI LANKA	40,915	40,915	-	SRI LANKA
SUDAN	41,860	34,778	7,082	SOUDAN
SURINAME	41,860	-	41,860	SURINAME
SHAZILAND	41,485	-	41,485	SHAZILAND
SWEDEN	4,944,560	4,944,560	-	SUEDE
SWITZERLAND	4,864,450	4,864,450	-	SUISSE
SYRIAN ARAB REPUBLIC	205,440	-	205,440	REPUBLIQUE ARABE SYRIENNE
TAJIKISTAN	83,710	-	83,710	TADJIKISTAN
THAILAND	533,130	347,657	185,473	THAILANDE
THE FORMER YUGOSLAV REP OF MACEDONIA	40,940	29,306	11,634	EX-REP. YOUSOSLAVE DE MACEDOINE
TOGO	41,860	-	41,860	TOGO
TOKELAU	41,410	-	41,410	TOKELAU
TONGA	40,815	40,815	-	TONGA
TRINIDAD AND TOBAGO	125,570	-	125,570	TRINITE-ET-TOBAGO
TUNISIA	123,530	8,305	115,225	TUNISIE
TURKEY	1,537,465	1,238,730	298,735	TURQUIE
TURKMENISTAN	125,570	-	125,570	TURKMENISTAN
TUVALU	40,955	-	40,955	TUVALU
UGANDA	41,285	-	41,285	DUGANDA
UKRAINE	4,478,650	-	4,478,650	UKRAINE
UNITED ARAB EMIRATES	795,045	-	795,045	EMIRATS ARABES UNIS
UNITED KINGDOM	21,416,350	21,416,350	-	ROYAUME-UNI
UNITED REPUBLIC OF TANZANIA	41,440	39,462	1,978	REPUBLIQUE-UNIE DE TANZANIE
UNITED STATES OF AMERICA	108,371,575	-	108,371,575	ETATS-UNIS D'AMERIQUE
URUGUAY	167,420	-	167,420	URUGUAY
UZBEKISTAN	544,130	-	544,130	OUBZBKISTAN
VANUATU	40,980	-	40,980	VANUATU
VENEZUELA	1,339,400	-	1,339,400	VENEZUELA
Viet Nam	40,900	-	40,900	Viet Nam
YEMEN	36,860	-	36,860	YEMEN
YUGOSLAVIA	418,560	-	418,560	YOUSOSLAVIE
ZAMBIA	40,980	-	40,980	ZAMBIE
ZIMBABWE	41,275	41,275	-	ZIMBABWE
Total	418,751,000	90,830,497 (21.69%)*	327,920,503	Total

* of contributions - the comparable percentages for 1996 and 1995 are } 33.35% & 31.06%
des contributions - les pourcentages comparables pour 1996 et 1995 sont

3. OUTSTANDING CONTRIBUTIONS RELATING TO THE REGULAR BUDGETS OF YEARS PRIOR TO 1998 FOR WHICH THE WORLD HEALTH ASSEMBLY AUTHORIZED SPECIAL ARRANGEMENTS

3. CONTRIBUTIONS DUES AU TITRE DU BUDGET REGULIER D'EXERCICES ANTERIEURS A 1998 POUR LESQUELLES L'ASSEMBLEE MONDIALE DE LA SANTE A AUTORISE DES ARRANGEMENTS SPECIAUX

Members and Associate Members	Year in which instalments are payable Année au cours de laquelle les acomptes sont dus	Outstanding instalments payable in respect of consolidated arrears of contributions as of 1.1.1998 Acomptes restant à verser au titre des contributions arrérées consolidées au 1.1.1998 (US\$)	Payments received in 1998 Versements reçus en 1998 (US\$)	Balance of instalments payable Solde des acomptes à verser (US\$)	Membres et Membres associés
BOSNIA AND HERZEGOVINA arrangements in accordance with resolution WHA50.22	1997 1998 1999/2001	107,200 107,200 321,595	- - -	107,200 107,200 321,595	BOSNIE-HERZEGOVINE arrangements conformément à la résolution WHA50.22
Total		535,995	-	535,995	Total
BELARUS arrangements in accordance with resolution WHA45.23	1997 1998 1999/2006	90,837 90,836 726,688	- - -	90,837 90,836 726,688	BELARUS arrangements conformément à la résolution WHA45.23
Total		908,361	-	908,361	Total
CHAD arrangements in accordance with resolution WHA37.6	1992 1993 1994	11,177 11,177 11,177	- - -	11,177 11,177 11,177	TCHAD arrangements conformément à la résolution WHA37.6
Total		33,531	-	33,531	Total
CUBA arrangements in accordance with resolution WHA50.30	1998 1999/2002	227,894 911,574	- -	227,894 911,574	CUBA arrangements conformément à la résolution WHA50.30
Total		1,139,468	-	1,139,468	Total
DOMINICAN REPUBLIC arrangements in accordance with resolution WHA33.7	1987 1988 1989	25,500 25,683 25,682	- - -	25,500 25,683 25,682	REPUBLIQUE DOMINICAINE arrangements conformément à la résolution WHA33.7
Total		76,865	-	76,865	Total
ROMANIA arrangements in accordance with resolution WHA39.16	1996	43,400	-	43,400	ROUMANIE arrangements conformément à la résolution WHA39.16
Total		43,400	-	43,400	Total
UKRAINE arrangements in accordance with resolution WHA45.23	1997 1998 1999/2006	342,853 342,848 2,742,784	- - -	342,853 342,848 2,742,784	UKRAINE arrangements conformément à la résolution WHA45.23
Total		3,428,485	-	3,428,485	Total
Grand total		6,166,105	-	6,166,105	Total général

4. OTHER OUTSTANDING CONTRIBUTIONS RELATING TO:
 A) REGULAR BUDGETS OF YEARS PRIOR TO 1998, AND
 B) UNBUDGETED ASSESSMENTS

4. AUTRES SOMMES DUES AU TITRE
 A) DES CONTRIBUTIONS AU BUDGET REGULIER D'EXERCICES ANTERIEURS A 1998, ET
 B) DES CONTRIBUTIONS NON INSCRITES AU BUDGET

Members and Associate Members	Unpaid arrears Arriéres impayés 1 Jan 1998 (US\$)	Cash receipts & credits given et crédits bonifiés (US\$)	Balances due - Sommes restant dues							Total (US\$)	Membres et Membres associés
			1986-1991 (US\$)	1992 (US\$)	1993 (US\$)	1994 (US\$)	1995 (US\$)	1996 (US\$)	1997 (US\$)		
AFGHANISTAN	164,130		17,459	37,290	36,695	40,255	40,745	41,555	41,555	164,130	AFGHANISTAN
ANTIGUA AND BARBUDA	256,724									256,724	ANTIGUA-ET-BARBUDA
ARGENTINA	2,169,182									2,169,182	ARGENTINE
ARMENIA	2,192,710									2,192,710	ARMENIE
AUSTRIA	180,562	180,562								1,945,863	AUTRICHE
AZERBAIJAN	3,637,010									668,760	AZERBAIDJAN
BEARUS	2,317,190									1,158,595	BEARUS
BELGIUM	551,192									56,478	BELGIQUE
BENIN	4,418									4,418	BENIN
BOLIVIA	40,745									40,745	BOLIVIE
BOSNIA AND HERZEGOVINA	46,355									4,961,235	BOSNIE-HERZEGOVINE
BRAZIL	9,922,470									333,230	BRESIL
BULGARIA	655,851									69,856	BULGARIE
BURKINA FASO	105,295									105,295	BURKINA FASO
BURUNDI	41,985									41,570	BURUNDI
CAMBODIA	48,009									41,570	CAMBODGE
CAMEROON	45,105									41,570	CAMEROUN
CAPE VERDE	146,014									42,105	CAP-VERT
CENTRAL AFRICAN REPUBLIC	210,169									140,016	REPUBLIQUE CENTRAFRICAINE
CHAD	407,593									210,169	TCHAD
CHINA	685,240									407,593	CHINE
COMOROS	133,792									121,667	COMORES
CONGO	41,560									133,792	CONGO
DJIBOUTI	792,300									41,560	DJIBOUTI
DOMINICA	276,878									792,300	DOMINIQUE
DOMINICAN REPUBLIC	338,709									165,050	REPUBLIQUE DOMINICAINE
EQUADOR	87,168									338,709	EQUATEUR
EQUATORIAL GUINEA	153,030									87,168	GUINEE EQUATORIALE
ESTONIA	110,665									110,665	ESTONIE
GABON	3,791,480									110,665	GABON
GAMBIA	81,169									3,791,480	GAMBIE
GEORGIA	82,366									468,740	GEORGIE
GHANA	235,089									73,398	GHANA
GUATEMALA	41,280									82,366	GUATEMALA
GUINEA	41,280									41,280	GUINEE
GUINEA-BISSAU	169									193,229	GUINEE-BISSAU
GUAYANA	41,280									169	GUAYANA
HAITI	2,989,238									41,280	HAITI
IRAN (ISLAMIC REPUBLIC OF)	4,501,237									869,582	IRAN (REPUBLIQUE ISLAMIQUE D')
IRAQ	4,021,639									4,001,237	IRAQ
ITALY	4,631,031									4,021,639	ITALIE
KAZAKHSTAN	27,232									4,021,639	KAZAKHSTAN
KENYA	1,041,480									4,021,639	KENYA
KYRGYZSTAN	2,259,930									4,021,639	KYRGYZSTAN
LATVIA	40,160									1,041,480	LETONIE
LEBANON	41,280									2,259,930	LIBAN
LESOTHO	556,137									41,280	LESOTHO
LIBERIA	1,772,918									556,137	LIBERIA
LIBYAN ARAB JAMAHIRIYA	1,022,920									829,575	JAMAHIRIYA ARABE LIBYENNE
LITHUANIA	51,772									480,070	LITUANIE
MADAGASCAR	83,753									2,803	MADAGASCAR
MAI	126,885									83,753	MALI
MAURITANIA	907,052									126,885	MAURITANIE
MEXICO	1,260									907,052	MEXIQUE
MICRONESIA (FEDERATED STATES OF)	82,630									82,630	MICRONESIE (ETATS FEDERES DE)
NAURU	40,417									40,417	NAURU
NICARAGUA	201,516									40,417	NICARAGUA
NIGER										201,516	NIGER

4. OTHER OUTSTANDING CONTRIBUTIONS RELATING TO:
 A) REGULAR BUDGETS OF YEARS PRIOR TO 1998, AND
 B) UNBUDGETED ASSESSMENTS (Concluded)

4. AUTRES SOMMES DUES AU TITRE

A) DES CONTRIBUTIONS AU BUDGET REGULIER D'EXERCICES ANTERIEURS A 1998, ET
 B) DES CONTRIBUTIONS NON INSCRITES AU BUDGET (Fin)

Members and Associate Members	Unpaid arrears Impayées 1 Jan 1998 (US\$)	Cash receipts & credits given Recettes et crédits bonifiés (US\$)	Balances due - Sommes restant dues							Membres et Membres associés	
			1986-1991 (US\$)	1992 (US\$)	1993 (US\$)	1994 (US\$)	1995 (US\$)	1996 (US\$)	1997 (US\$)		Total (US\$)
NIGERIA	463,565									463,565	NIGERIA
PANAMA	29,064									29,064	PANAMA
PERU	679,777	35,801						149,256	247,360	643,974	PEROU
POLAND	134,716									134,716	POLONNE
PUERTO RICO	82,200								40,845	82,200	PORTO RICO
REPUBLIC OF MOLDOVA	2,460,149		547,909					616,050	340,070	340,070	REPUBLIQUE DE MOLDOVA
ROMANIA	618,185									618,185	ROUMANIE
RUSSIAN FEDERATION	34,960,170	4,500,000							12,637,205	17,822,965	FEDERATION DE RUSSIE
SAINT VINCENT AND THE GRENADINES	49,119	510							7,714	41,405	SANT VINCENT-ET-PRINCIPE
SLOVENIA	285,510								41,030	149,085	SLOVENIE
SAO TOME AND PRINCEPE	89,758	136,275							41,570	41,570	SANTO TOMÉ-ET-PRINCEPE
SLOVAKIA	329,023									329,023	SLOVAQUIE
SUDAN	26,012									26,012	SOUDBAN
TADJIKISTAN	732,074	38,100			118,224		205,350	205,350	82,525	693,974	TADJIKISTAN
TOGO	7,733									7,733	TOGO
TOKELAU	28,030									28,030	TOKELAU
TRINIDAD AND TOBAGO	78,767									78,767	TRINITE-ET-TOBAGO
TURKEY	705,000									705,000	TURQUIE
TURKMENISTAN	991,750									991,750	TURKMENISTAN
UGANDA	33,910				220,160		246,420	246,420	128,670	128,670	UGANDA
UNITED STATES OF AMERICA	28,472,107	2,107			4,256,450		7,556,865	7,556,865	4,553,490	28,477,160	ETATS-UNIS D'AMERIQUE
UNITED REPUBLIC OF TANZANIA	39,766,549									39,766,549	REPUBLIQUE-UNITE DE TANZANIE
URUGUAY	314,472								149,627	164,845	URUGUAY
VANUATU	41,250									41,250	VANUATU
VENEZUELA	1,344,634	943,696							4,762	400,938	VENEZUELA
YEMEN	117,162	60,830								51,570	YEMEN
YUGOSLAVIA	4,892,542				478,022		574,980	574,980	417,595	4,892,542	YOUgoslavIE
ZAMBIA	41,340									-	ZAMBIE
Total A	171,990,554	18,081,727	3,196,458	2,752,284	9,427,700	14,648,463	14,943,079	24,341,011	84,599,832	153,908,827	Total A
UKRAINE	1,519,535									1,519,535	UKRAINE
Total B	1,519,535									1,519,535	Total B
Grand total	173,510,089	18,081,727	3,196,458	4,271,819	9,427,700	14,648,463	14,943,079	24,341,011	84,599,832	155,428,362	Total general

5. CONTRIBUTIONS FOR YEAR 1999 RECEIVED IN ADVANCE

5. CONTRIBUTIONS POUR L'ANNEE 1999 RECUES EN AVANCE

Members and Associate Members	Assessments Sommes fixées (US\$)	Cash receipts and credits given Encaissements et crédits bonifiés (US\$)	Balances due Sommes restant à payer (US\$)	Membres et Membres associés
ANGOLA	41,790	10,601	31,189	ANGOLA
BANGLADESH	40,820	1,540	39,280	BANGLADESH
BHUTAN	40,855	510	40,345	BHOUTAN
COSTA RICA	41,530	23,740	17,790	COSTA RICA
DEMOCRATIC PEOPLE'S REP. OF KOREA	204,070	3,728	200,342	REP. POPULAIRE DEM. DE COREE
EL SALVADOR	41,470	510	40,960	EL SALVADOR
FINLAND	2,494,615	24,125	2,470,490	FINLANDE
KIRIBATI	40,890	1,561	39,329	KIRIBATI
KUWAIT	773,260	660	772,600	KOWEIT
MALTA	40,835	510	40,325	MALTE
MAURITIUS	40,810	495	40,315	MAURICE
MYANMAR	40,820	365	40,455	MYANMAR
TONGA	40,815	880	39,935	TONGA
Total in respect of above Members	3,882,580	69,225	3,813,355	Total concernant les Membres ci-dessus