



ВСЕМИРНАЯ ОРГАНИЗАЦИЯ ЗДРАВООХРАНЕНИЯ

ИСПОЛНИТЕЛЬНЫЙ КОМИТЕТ
Сто тринадцатая сессия
Пункт 5.1 предварительной повестки дня

ЕВ113/16 Corr.1
15 января 2004 г.

Состояние поступления обязательных взносов

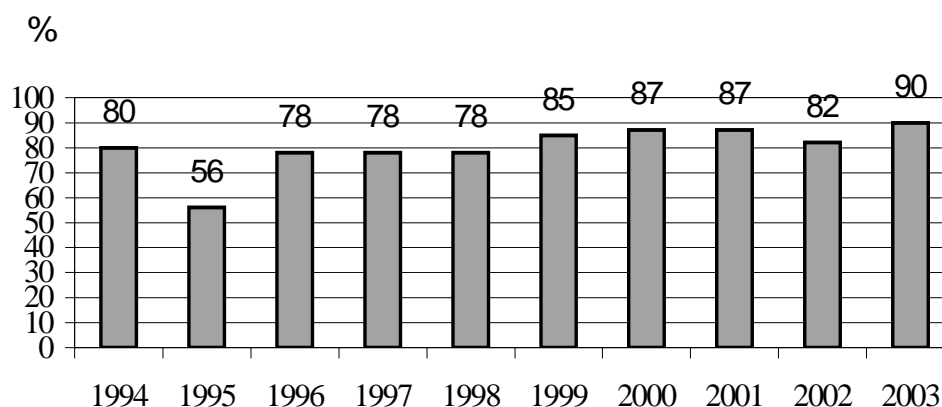
Доклад Генерального директора

ИСПРАВЛЕНИЕ

Просьба заменить Приложение 1 следующим текстом:

ПРИЛОЖЕНИЕ 1

**Figure 1. Rate of collection of contributions:
percentage collected as at 31 December,
from 1994 to 2003**



**Figure 2. Payment status of Member States and Associate Members in respect of
current-year contributions to the effective working budget**

	Number of Members that had paid contributions in full	Number of Members that had paid contributions in part	Number of Members that had made no payment	Total number of Members and Associate Members
30 November 1994	95	17	75	187
30 November 1995	95	14	78	187
30 November 1996	98	29	65	192
30 November 1997	99	27	66	192
30 November 1998	100	25	68	193
30 November 1999	109	27	57	193
30 November 2000	114	28	51	193
31 December 2001	122	25	46	193
31 December 2002	116	22	56	194
31 December 2003	132	22	40	194

= = =