

HIGHLIGHTS

First Report of the Transition Independent Monitoring Board of the Polio Programme

Polio eradication is the largest global health initiative ever undertaken. After nearly 30 years of amassing staff and creating networks to support fund raising, advocacy, vaccine delivery, disease surveillance, and laboratories that address not only polio but other diseases as well, the Polio Oversight Board has announced that the Global Polio Eradication Initiative (GPEI) will “sunset” when polio eradication is officially certified. Certification involves a three-year waiting period after the last recorded case of the disease.

To monitor and guide the process of polio transition planning the GPEI created Transition Independent Monitoring Board (TIMB). The first report of the TIMB provides an initial analysis of the priorities, plans, risks and opportunities as the eradication of polio appears to be drawing closer. The report also outlines areas of further work.

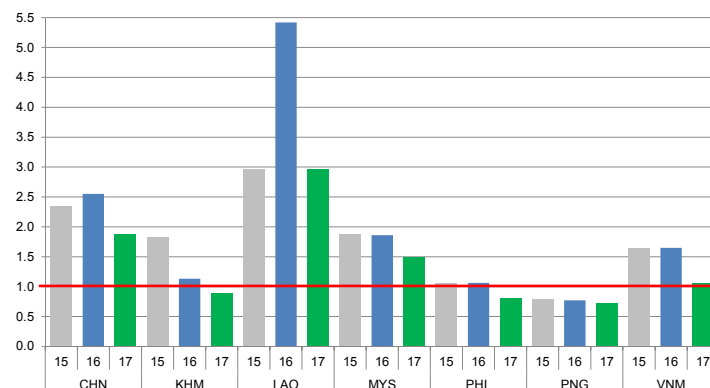
For more information please visit:

http://polioeradication.org/wp-content/uploads/2017/07/TIMB_Report-no1_Jul2017_EN.pdf

CONTACT US

Expanded Programme on Immunization
Regional Office for the Western Pacific
World Health Organization
P.O. Box 2932, 1000 Manila, Philippines
Phone: +63 2 5288001
Fax: +63 2 5211036, 5260279
Email: wproepidata@who.int
Web: www.wpro.who.int/immunization

Chart 1. Non-polio AFP rate (per 100 000 persons < 15 years of age), 2015–2017*



* AFP rate annualized as of week 30

Chart 2. Adequate specimen collection rate, 2015–2017

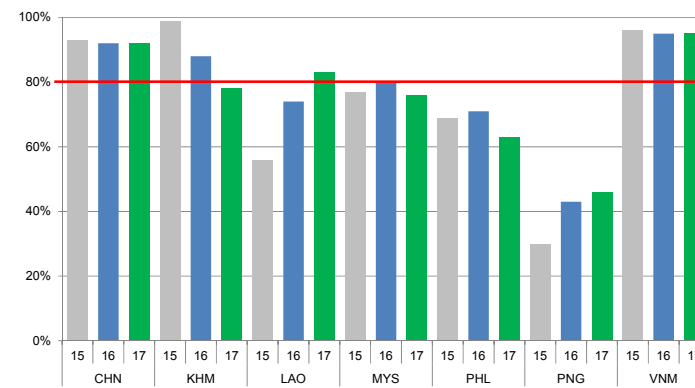


Chart 3. Percentage of reported AFP cases by number of polio vaccination doses, 2017

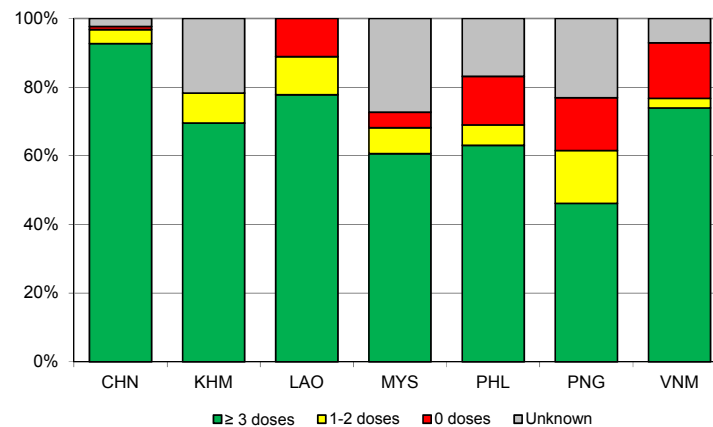
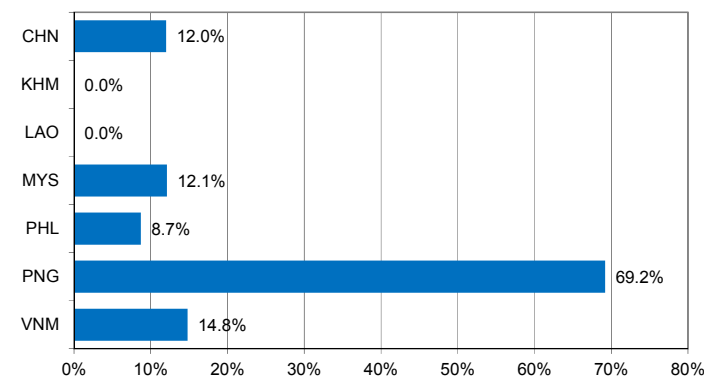


Chart 4. Percentage of reported AFP cases with pending classification > 90 days after onset, 2017



Note: Priority countries were selected for the charts. Official WHO acronyms have been used for abbreviation: CHN (China), KHM (Cambodia), LAO (Lao People’s Democratic Republic), MYS (Malaysia), PHL (Philippines), PNG (Papua New Guinea), and VNM (Viet Nam).

Table 1. Classification of AFP cases with onset in 2017 and key surveillance indicators

Country/area	2016		2017											
	Total reported cases	Annual expected cases <15 years of age	Total reported cases	Classification						Indicators			Latest report date	Days since last report ⁵
				Confirmed wild poliovirus	Vaccine-derived poliovirus (VDPV)	Polio-compatible	Discarded (Non-polio)	Pending		Non-polio AFP rate ²	% with adequate specimens ³	% investigated ≤ 2 days of notification ⁴		
								Total	> 90 days ¹ # (%)					
≥ 1	≥ 80%	≥ 80%	≤ 30											
Australia	62	45	25	0	0	1	13	11	4 (16.0%)	0.96	40%	92%	28-Jul-17	4
Brunei Darussalam	1	1	1	0	0	0	1	0	0 (0.0%)	1.73	0%	100%	24-Jul-17	8
Cambodia	51	45	23	0	0	0	18	5	0 (0.0%)	0.89	78%	91%	17-Jul-17	15
China	5691	2256	2450	0	1	0	1280	1169	295 (12.0%)	1.88	92%	100%	26-Jul-17	6
China, Hong Kong SAR	10	8	5	0	0	0	4	1	0 (0.0%)	1.08	80%	100%	07-Jul-17	25
China, Macao SAR	1	1	1	0	0	0	0	1	1 (100.0%)	1.73	0%	100%	18-Jul-17	14
Japan	0	161	0	-	-	-	-	-	-	-	-	-	-	-
Lao People's Democratic Republic	133	21	36	0	0	0	23	13	0 (0.0%)	2.97	83%	81%	07-Jun-17	55
Malaysia	143	77	66	0	0	0	42	24	8 (12.1%)	1.49	76%	79%	10-Jul-17	22
Mongolia	7	9	4	0	0	0	4	0	0 (0.0%)	0.77	75%	100%	08-Jul-17	24
New Zealand	12	9	5	0	0	0	0	5	4 (80.0%)	0.96	20%	100%	23-Jun-17	39
Papua New Guinea	23	31	13	0	0	0	2	11	9 (69.2%)	0.73	46%	92%	07-Jul-17	25
Philippines	417	394	184	0	0	0	151	33	16 (8.7%)	0.81	63%	98%	14-Jul-17	18
Republic of Korea	70	68	28	0	0	0	21	7	1 (3.6%)	0.71	86%	100%	01-Aug-17	0
Singapore	7	6	3	0	0	0	3	0	0 (0.0%)	0.87	100%	100%	10-Jul-17	22
Viet Nam	382	234	142	0	0	0	35	107	21 (14.8%)	1.05	95%	93%	23-Jun-17	39
Pacific island countries and areas	20	11	8	0	0	0	8	0	0 (0.0%)	1.26	63%	100%	20-Jun-17	42
Total	7030	3377	2994	0	1	1	1605	1387	359 (12.0%)	1.54	89%	98%		

1. Number (%) of reported cases pending classification more than 90 days from date of onset of paralysis to date of last report
2. Annualized non-polio AFP rate per 100 000 population under 15 years of age
3. Percentage of reported cases with two stool specimens collected 24 hours apart and within 14 days of onset of paralysis
4. Percentage of reported cases investigated within two days of notification
5. Countries are expected to submit data at least once per month to WPRO

Green	Reached or surpassed target
Yellow	Nearly reached target: 0.5–0.99 for no non-polio AFP rate; 60–79% for other indicators
Red	Substantially below target

Table 2. Laboratory investigation of stool samples from AFP cases with onset in 2017 and key laboratory indicators

Country/area	Polio laboratory	Total no. of AFP cases with specimens	Results of virus isolation for AFP cases									Intratype differentiation/ Sequencing laboratory ¹	No. of isolates received	Results of intratype differentiation (ITD)/sequencing for virus isolates														
			L20B positive	L20B positive + NPEV	NPEV only	Negative	Pending ≤ 14 days	Pending > 14 days	% results reported ≤ 14 days	% specimens positive for NPEV	Latest report date			Type 1			Type 2			Type 3			NPEV ²	Pending ITD	Discordant pending sequencing	% ITD results reported ≤ 7 days of receipt		
														Wild	Sabin	VDPV	Wild	Sabin	VDPV	Wild	Sabin	VDPV						
Australia	VIDRL	18	0	0	3	12	3	0	96%	19%	28-Jul-17	VIDRL	0	-	-	-	-	-	-	-	-	-	-	-	-	-	-	-
Brunei Darussalam	VIDRL	0	-	-	-	-	-	-	-	-	28-Jul-17	VIDRL	0	-	-	-	-	-	-	-	-	-	-	-	-	-	-	-
Cambodia	NIID	23	0	0	4	19	0	0	98%	15%	31-Jul-17	NIID	0	-	-	-	-	-	-	-	-	-	-	-	-	-	-	-
China (total)		2400	27	0	143	2187	0	43	95%	5%	26-Jul-17		65	0	26	0	0	0	0	0	34	1	4	0	0	0	98%	
China, Anhui	Prov. Lab	169	3	0	4	157	0	5	99%	2%		Prov. Lab/CCDC	7	0	6	0	0	0	0	0	1	0	0	0	0	0	100%	
China, Beijing	Prov. Lab	23	1	0	0	22	0	0	96%	0%		Prov. Lab/CCDC	1	0	0	0	0	0	0	0	1	0	0	0	0	0	100%	
China, Chongqing	Prov. Lab	37	0	0	2	35	0	0	95%	4%		Prov. Lab/CCDC	2	0	0	0	0	0	0	2	0	0	0	0	0	0	100%	
China, Fujian	Prov. Lab	86	1	0	2	81	0	2	88%	1%		Prov. Lab/CCDC	1	0	0	0	0	0	0	1	0	0	0	0	0	0	100%	
China, Gansu	Prov. Lab	36	0	0	0	36	0	0	97%	0%		Prov. Lab/CCDC	0	-	-	-	-	-	-	-	-	-	-	-	-	-	-	
China, Guangdong	Prov. Lab	187	2	0	20	162	0	3	96%	10%		Prov. Lab/CCDC	8	0	6	0	0	0	0	0	2	0	0	0	0	0	0	100%
China, Guangxi	Prov. Lab	116	3	0	17	96	0	0	97%	14%		Prov. Lab/CCDC	6	0	2	0	0	0	0	4	0	0	0	0	0	0	100%	
China, Guizhou	Prov. Lab	91	0	0	5	84	0	2	98%	5%		Prov. Lab/CCDC	0	-	-	-	-	-	-	-	-	-	-	-	-	-	-	
China, Hebei	Prov. Lab	138	2	0	7	129	0	0	99%	4%		Prov. Lab/CCDC	3	0	0	0	0	0	0	3	0	0	0	0	0	0	0	100%
China, Heilongjiang	Prov. Lab	45	0	0	1	44	0	0	100%	2%		Prov. Lab/CCDC	0	-	-	-	-	-	-	-	-	-	-	-	-	-	-	
China, Henan	Prov. Lab	223	2	0	30	191	0	0	84%	11%		Prov. Lab/CCDC	11	0	2	0	0	0	0	4	1	4	0	0	0	0	100%	
China, Hubei	Prov. Lab	84	0	0	10	73	0	1	93%	11%		Prov. Lab/CCDC	0	-	-	-	-	-	-	-	-	-	-	-	-	-	-	
China, Hunan	Prov. Lab	96	1	0	9	85	0	1	98%	7%		Prov. Lab/CCDC	4	0	3	0	0	0	0	1	0	0	0	0	0	0	0	100%
China, Jiangsu	Prov. Lab	105	3	0	1	101	0	0	100%	1%		Prov. Lab/CCDC	6	0	0	0	0	0	0	6	0	0	0	0	0	0	0	100%
China, Jiangxi	Prov. Lab	68	1	0	6	61	0	0	96%	7%		Prov. Lab/CCDC	1	0	0	0	0	0	0	1	0	0	0	0	0	0	100%	
China, Jilin	Prov. Lab	30	0	0	0	29	0	1	100%	0%		Prov. Lab/CCDC	0	-	-	-	-	-	-	-	-	-	-	-	-	-	-	
China, Neimongol	Prov. Lab	36	0	0	1	35	0	0	97%	1%		Prov. Lab/CCDC	0	-	-	-	-	-	-	-	-	-	-	-	-	-	-	
China, Ningxia	Prov. Lab	11	0	0	0	9	0	2	89%	0%		Prov. Lab/CCDC	0	-	-	-	-	-	-	-	-	-	-	-	-	-	-	
China, Shaanxi	Prov. Lab	52	1	0	2	46	0	3	88%	4%		Prov. Lab/CCDC	1	0	0	0	0	0	0	1	0	0	0	0	0	0	0%	
China, Shandong	Prov. Lab	173	3	0	2	168	0	0	91%	1%		Prov. Lab/CCDC	4	0	1	0	0	0	0	3	0	0	0	0	0	0	0	100%
China, Shanghai	Prov. Lab	19	0	0	0	19	0	0	100%	0%		Prov. Lab/CCDC	0	-	-	-	-	-	-	-	-	-	-	-	-	-	-	
China, Shanxi	Prov. Lab	84	0	0	3	81	0	0	93%	4%		Prov. Lab/CCDC	0	-	-	-	-	-	-	-	-	-	-	-	-	-	-	
China, Sichuan	Prov. Lab	146	1	0	6	135	0	4	93%	2%		Prov. Lab/CCDC	2	0	2	0	0	0	0	0	0	0	0	0	0	0	0	100%
China, Tianjin	Prov. Lab	17	0	0	0	17	0	0	100%	0%		Prov. Lab/CCDC	0	-	-	-	-	-	-	-	-	-	-	-	-	-	-	
China, Xinjiang	Prov. Lab	66	2	0	4	58	0	2	95%	5%		Prov. Lab/CCDC	6	0	4	0	0	0	0	2	0	0	0	0	0	0	0	100%
China, Yunnan	Prov. Lab	109	0	0	6	92	0	11	90%	5%		Prov. Lab/CCDC	0	-	-	-	-	-	-	-	-	-	-	-	-	-	-	
China, Zhejiang	Prov. Lab	90	1	0	2	87	0	0	100%	2%		Prov. Lab/CCDC	2	0	0	0	0	0	0	2	0	0	0	0	0	0	0	100%
China, Hainan	Prov. Lab	7	0	0	1	6	0	0	86%	7%		CCDC	0	-	-	-	-	-	-	-	-	-	-	-	-	-	-	
China, Liaoning	Prov. Lab	40	0	0	2	35	0	3	100%	3%		CCDC	0	-	-	-	-	-	-	-	-	-	-	-	-	-	-	
China, Qinghai	Prov. Lab	11	0	0	0	9	0	2	100%	0%		CCDC	0	-	-	-	-	-	-	-	-	-	-	-	-	-	-	
China, Tibet	Prov. Lab	5	0	0	0	4	0	1	100%	0%		CCDC	0	-	-	-	-	-	-	-	-	-	-	-	-	-	-	
China, Hong Kong SAR	PHLC	7	0	0	0	6	1	0	100%	0%	25-Jul-17	PHLC	0	-	-	-	-	-	-	-	-	-	-	-	-	-	-	
China, Macao SAR	PHLC	0	-	-	-	-	-	-	-	-	25-Jul-17	PHLC	0	-	-	-	-	-	-	-	-	-	-	-	-	-	-	
Japan	NIID	0	-	-	-	-	-	-	-	-	-	NIID	-	-	-	-	-	-	-	-	-	-	-	-	-	-	-	
Lao People's Democratic Republic	NIID	72	1	0	6	65	0	0	100%	8%	26-Jul-17	NIID	0	-	-	-	-	-	-	-	-	-	-	-	-	-	-	
Malaysia	IMR	92	0	0	6	85	0	1	98%	6%	13-Jul-17	IMR	0	-	-	-	-	-	-	-	-	-	-	-	-	-	-	
Mongolia	PHI	4	0	0	0	4	0	0	100%	0%	04-May-17	NIID	0	-	-	-	-	-	-	-	-	-	-	-	-	-	-	
New Zealand	IESR	2	0	0	0	2	0	0	100%	0%	01-Aug-17	IESR	0	-	-	-	-	-	-	-	-	-	-	-	-	-	-	
Papua New Guinea	VIDRL	15	0	0	5	8	2	0	100%	29%	28-Jul-17	VIDRL	0	-	-	-	-	-	-	-	-	-	-	-	-	-	-	
Philippines	RITM	268	6	0	13	232	17	0	99%	4%	25-Jul-17	RITM	14	0	4	0	0	0	0	10	0	0	0	0	0	0	100%	
Republic of Korea	NIH	28	0	0	2	23	0	3	100%	4%	01-Aug-17	NIH	0	-	-	-	-	-	-	-	-	-	-	-	-	-	-	
Singapore	SGH	4	0	0	0	3	1	0	100%	0%	28-Jul-17	SGH	0	-	-	-	-	-	-	-	-	-	-	-	-	-	-	
Viet Nam (North)	NIHE	95	0	0	18	69	8	0	99%	20%	27-Jul-17	NIHE	0	-	-	-	-	-	-	-	-	-	-	-	-	-	-	
Viet Nam (South)	PI	99	0	0	13	81	5	0	100%	14%	28-Jul-17	PI	0	-	-	-	-	-	-	-	-	-	-	-	-	-	-	
Pacific island countries and areas	VIDRL	9	0	0	3	5	1	0	100%	33%	28-Jul-17	VIDRL	0	-	-	-	-	-	-	-	-	-	-	-	-	-	-	
Total		3136	34	0	216	2801	38	47	95%	5%			79	0	30	0	0	0	0	0	44	1	4	0	0	0	99%	

1. CCDC (Chinese Center for Disease Control and Prevention, China); IESR (Institute of Environmental Science and Research, New Zealand); IMR (Institute of Medical Research, Malaysia); NIH (National Institute of Health, Republic of Korea); NIHE (National Institute of Hygiene and Epidemiology, Ha Noi, Viet Nam); NIID (National Institute of Infectious Diseases, Japan); PHI (Public Health Institute, Mongolia); PHLC (Public Health Laboratory Center, China, Hong Kong SAR); PI (Pasteur Institute, Ho Chi Minh, Viet Nam); RITM (Research Institute for Tropical Medicine, Philippines); SGH (Singapore General Hospital); VIDRL (Victorian Infectious Diseases Reference Laboratory, Australia)

2. NPEV growing in L20B cells

Table 3. Laboratory confirmation of polio isolates from environmental samples in 2016–2017¹

Country/area	Intratyptic differentiation lab ²	2016													2017																
		Total number of samples processed	Total number of samples with polio isolates	Polio isolates									NPEV	Pending ITD	Discordant pending sequencing	Total number of samples processed	Total number of samples with polio isolates	Polio isolates									NPEV	Pending ITD	Discordant pending sequencing		
				Type 1			Type 2			Type 3								Type 1			Type 2			Type 3							
				Wild	Sabin	VDPV	Wild	Sabin	VDPV	Wild	Sabin	VDPV						Wild	Sabin	VDPV	Wild	Sabin	VDPV	Wild	Sabin	VDPV					
Australia	VIDRL	0	-	-	-	-	-	-	-	-	-	-	-	-	-	-	-	-	-	-	-	-	-	-	-	-	-	-	-	-	-
China (total)		345	171	0	179	0	0	174	0	0	507	0	229	0	0	131	76	0	127	0	0	0	0	0	342	0	266	1	0	0	
China, Fujian	Prov. Lab/CCDC	60	12	0	3	0	0	1	0	0	11	0	42	0	0	16	3	0	1	0	0	0	0	0	5	0	63	0	0	0	
China, Gansu	Prov. Lab/CCDC	13	8	0	5	0	0	5	0	0	13	0	2	0	0	6	4	0	4	0	0	0	0	0	13	0	2	0	0	0	
China, Guangdong	Prov. Lab/CCDC	48	35	0	19	0	0	4	0	0	62	0	39	0	0	24	21	0	11	0	0	0	0	0	55	0	42	0	0	0	
China, Guangxi	Prov. Lab/CCDC	36	13	0	1	0	0	4	0	0	52	0	23	0	0	15	7	0	3	0	0	0	0	0	15	0	23	1	0	0	
China, Heilongjiang	Prov. Lab/CCDC	45	21	0	0	0	0	5	0	0	46	0	32	0	0	12	5	0	1	0	0	0	0	0	15	0	22	0	0	0	
China, Shandong	Prov. Lab/CCDC	45	28	0	25	0	0	15	0	0	42	0	40	0	0	20	14	0	15	0	0	0	0	0	60	0	67	0	0	0	
China, Shanghai	Prov. Lab/CCDC	24	18	0	17	0	0	4	0	0	34	0	18	0	0	8	7	0	11	0	0	0	0	0	19	0	7	0	0	0	
China, Xinjiang	Prov. Lab/CCDC	36	36	0	109	0	0	136	0	0	247	0	25	0	0	15	15	0	81	0	0	0	0	0	160	0	29	0	0	0	
China, Yunnan	Prov. Lab/CCDC	38	0	-	-	-	-	-	-	-	-	-	8	0	0	15	0	-	-	-	-	-	-	-	-	-	11	0	0	0	
Malaysia	IMR	10	0	-	-	-	-	-	-	-	-	-	6	0	0	2	0	-	-	-	-	-	-	-	-	-	0	0	0	0	
Philippines	RITM	0	-	-	-	-	-	-	-	-	-	-	-	-	-	15	3	0	0	0	0	0	0	0	3	0	2	9	0	0	
Total		355	171	0	179	0	0	174	0	0	507	0	235	0	0	148	79	0	127	0	0	0	0	0	345	0	268	10	0	0	

1. Based on year of collection of sample, if available. Otherwise, based on year of receipt at reference laboratory.
2. CCDC (Chinese Center for Disease Control and Prevention, China); IMR (Institute of Medical Research, Malaysia); VIDRL (Victorian Infectious Diseases Reference Laboratory, Australia)

Table 4. Vaccine-derived poliovirus¹ identified from laboratory testing², 2000–2017

Country/area	2000–2009 ³	2010	2011	2012	2013	2014	2015	2016	2017
Cambodia	2006 - 1 Total - 2								
China	2009 - 1 Total - 27	aVDPV2 (3 AFP + 1 contact + 1 non-AFP) aVDPV3 (1 AFP + 1 non-AFP)	aVDPV1 (1 AFP) aVDPV2 (2 AFP + 1 contact) cVDPV2 (2 AFP) iVDPV2 (1 AFP + 1 non-AFP) iVDPV3 (1 AFP)	aVDPV1 (1 AFP) aVDPV2 (2 AFP) cVDPV2 (2 AFP + 1 contact) iVDPV2 + iVDPV3 (1 AFP)	aVDPV2 (1 non-AFP) iVDPV2 + iVDPV3 (1 AFP)	aVDPV1 (1 non-AFP) aVDPV2 (2 AFP) iVDPV3 (1 AFP)	aVDPV1 (1 AFP) aVDPV2 (1 AFP) iVDPV2 (1 AFP)	aVDPV3 (1 AFP)	aVDPV3 (1 AFP)
China, Hong Kong SAR	2005 - 3								
Japan	2005 - 1 Total - 2								
Lao People's Democratic Republic	2004 - 3						cVDPV1 (8 AFP + 21 contacts)	cVDPV1 (3 AFP + 4 contacts)	
Mongolia	2003 - 1								
Philippines	2001 - 3					aVDPV2 (1 AFP)			
Viet Nam				aVDPV2 (2 AFP)					

1. Prefix letter refers to the VDPV category: "cVDPV" = circulating VDPV, "iVDPV" = immunodeficiency-associated VDPV, "aVDPV" = ambiguous VDPV, "?VDPV" = pending. Suffix number refers to the poliovirus serotype (types 1, 2 or 3).
2. Source of specimens could be AFP cases, contacts, or non-AFP cases
3. Refers to year of last VDPV case, and aggregate total of VDPV cases for 2000-2009