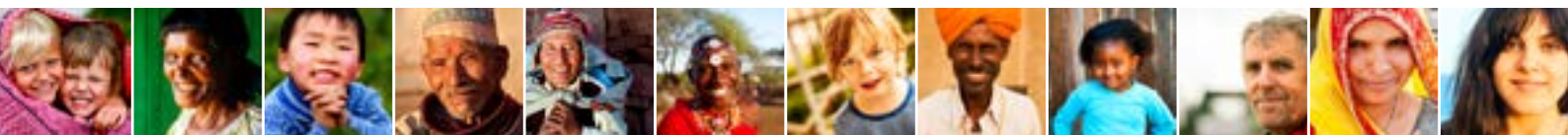


# CLIMATE AND HEALTH COUNTRY PROFILE – 2015

## PAKISTAN



United Nations  
Framework Convention on  
Climate Change



### OVERVIEW

The Islamic Republic of Pakistan is a rapidly developing lower middle-income country in south Asia [World Bank Country Overview, 2015]. The country is divided into three major geographic areas: the Balochistan plateau, the Indus river plain and the northern highlands. Climate varies with topography and season, encompassing temperate, tropical and arid climates, and seasonal monsoons.

Pakistan makes a minimal contribution to global greenhouse gas emissions. Despite this, Pakistan is highly vulnerable to climate change and extreme weather events, including melting glaciers in the Himalayas which threaten river flows, increased frequency and severity of monsoons and cyclones, and saline intrusion. Further health risks could include an increase in geographical range and incidence of vector-borne diseases, and heat stress.

Pakistan's national development strategy 'Pakistan Vision 2025' includes sustainable development alongside aims of economic growth and social inclusion. Pakistan's INDC recognizes the need to mainstream medium and long-term climate change efforts into policies and programmes between different levels of government, and the need to ensure adaptation to climate change in the most vulnerable sectors [Pakistan INDC, 2015].

### SUMMARY OF KEY FINDINGS

- In Pakistan, under a high emissions scenario, mean annual temperature is projected to rise by about 6.1°C on average from 1990 to 2100. If global emissions decrease rapidly, the temperature rise is limited to about 1.7°C [page 2].
- In Pakistan, under a high emissions scenario, and without large investments in adaptation, an annual average of 1,207,700 people are projected to be affected by flooding due to sea level rise between 2070 and 2100. If global emissions decrease rapidly and there is a major scale up in protection the annual

affected population could be limited to about 1,000 people [page 3].

- In Pakistan, under a high emissions scenario heat-related deaths in the elderly (65+ years) are projected to increase to about 63 deaths per 100,000 by 2080 compared to the estimated baseline of under 10 deaths per 100,000 annually between 1961 and 1990. A rapid reduction in global emissions could limit heat-related deaths in the elderly to about 17 deaths per 100,000 in 2080 [page 4].

### OPPORTUNITIES FOR ACTION

Pakistan is currently implementing projects on health adaptation to climate change and is taking action to build institutional and technical capacities to work on climate change. Additionally, Pakistan is developing a national strategy for climate change that considers the health implications of climate change mitigation actions. Country reported data [see section 6] indicate there are further opportunities for action in the following areas:

#### 1) Adaptation

- Conduct a national assessment of climate change impacts, vulnerability and adaptation for health.
- Implement activities to increase the climate resilience of health infrastructure.
- Include climate information in an integrated disease surveillance and response system.

#### 2) Mitigation

- Conduct a valuation of the health co-benefits of climate change mitigation policies.

#### 3) National Policy Response

- Develop and approve a national health adaptation strategy.
- Include health considerations of climate change mitigation policies in National Communications to the UNFCCC.

### DEMOGRAPHIC ESTIMATES

Population [2013] <sup>a</sup>	181 million
Population growth rate [2013] <sup>a</sup>	2.1 %
Population living in urban areas [2013] <sup>b</sup>	37.9 %
Population under five [2013] <sup>a</sup>	13.3 %
Population aged 65 or older [2013] <sup>a</sup>	4.5 %

### ECONOMIC AND DEVELOPMENT INDICATORS

GDP per capita (current US\$, 2013) <sup>c</sup>	1,275 USD
Total expenditure on health as % of GDP [2013] <sup>d</sup>	2.8 %
Percentage share of income for lowest 20% of population [2010] <sup>c</sup>	9.6 %
HDI [2013, +/- 0.01 change from 2005 is indicated with arrow] <sup>e</sup>	0.537 ▲

### HEALTH ESTIMATES

Life expectancy at birth [2013] <sup>f</sup>	66 years
Under-5 mortality per 1000 live births [2013] <sup>g</sup>	86

a World Population Prospects: The 2015 Revision, UNDESA [2015]

b World Urbanization Prospects: The 2014 Revision, UNDESA [2014]

c World Development Indicators, World Bank [2015]

d Global Health Expenditure Database, WHO [2014]

e United Nations Development Programme, Human Development Reports [2014]

f Global Health Observatory, WHO [2014]

g Levels & Trends in Child Mortality Report 2015, UN Inter-agency Group for Child Mortality Estimation [2015]

# 1

## CURRENT AND FUTURE CLIMATE HAZARDS

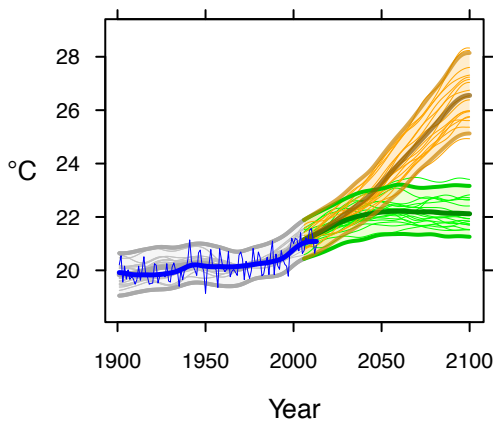
Due to climate change, many climate hazards and extreme weather events, such as heat waves, heavy rainfall and droughts, could become more frequent and more intense in many parts of the world.

Outlined here are country-specific projections up to the year 2100 for climate hazards under a 'business as usual' high emissions scenario compared to projections under a 'two-degree' scenario with rapidly decreasing global emissions. Most hazards caused by climate change will persist for many centuries.

### COUNTRY-SPECIFIC CLIMATE HAZARD PROJECTIONS

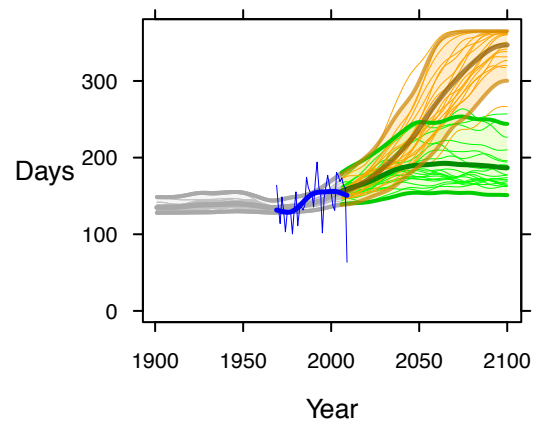
The model projections below present climate hazards under a high emissions scenario, Representative Concentration Pathway 8.5 [RCP8.5] (in orange) and a low emissions scenario, [RCP2.6] (in green).<sup>a</sup> The text boxes describe the projected changes averaged across about 20 models (thick line). The figures also show each model individually as well as the 90% model range (shaded) as a measure of uncertainty and, where available, the annual and smoothed observed record (in blue).<sup>b,c</sup>

#### MEAN ANNUAL TEMPERATURE



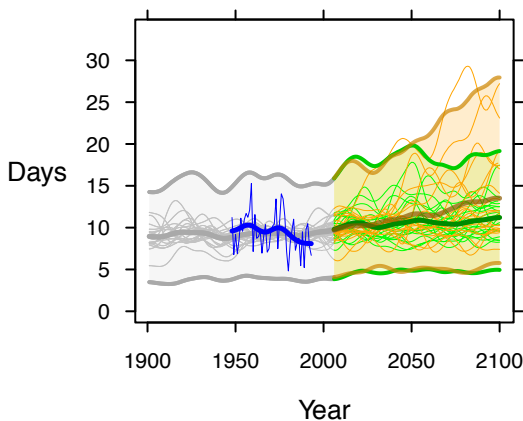
Under a high emissions scenario, mean annual temperature is projected to rise by about 6.1°C on average from 1990 to 2100. If emissions decrease rapidly, the temperature rise is limited to about 1.7°C.

#### DAYS OF WARM SPELL ('HEAT WAVES')



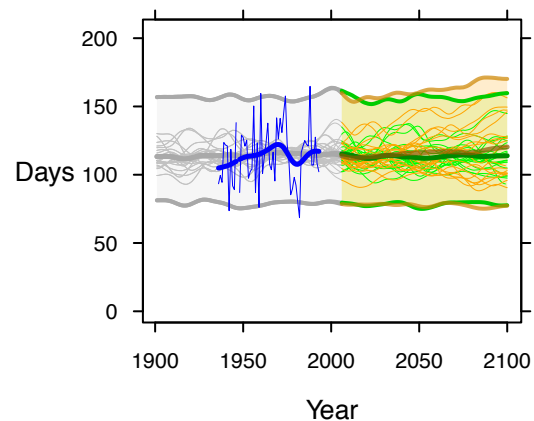
Under a high emissions scenario, the number of days of warm spell<sup>d</sup> is projected to increase from about 150 days in 1990 to about 350 days on average in 2100. If emissions decrease rapidly, the days of warm spell are limited to about 185 on average.

#### DAYS WITH EXTREME RAINFALL ('FLOOD RISK')



Under a high emissions scenario, the number of days with very heavy precipitation [20 mm or more] could increase by about 4 days on average from 1990 to 2100, increasing the risk of floods. A few models indicate increases well outside the range of historical variability, implying even greater risk. If emissions decrease rapidly, the increase in risk is much reduced.

#### CONSECUTIVE DRY DAYS ('DROUGHT')



Under a high emissions scenario, the longest dry spell is indicated to increase slightly from an average of about 115 days to about 120 days, with continuing large year-to-year variability. If emissions decrease rapidly, there is no change in the average length of dry spells.

<sup>a</sup> Model projections are from CMIP5 for RCP8.5 [high emissions] and RCP2.6 [low emissions]. Model anomalies are added to the historical mean and smoothed.

<sup>b</sup> Observed historical record of mean temperature is from CRU-TSv.3.22; observed historical records of extremes are from HadEX2.

<sup>c</sup> Analysis by the Climatic Research Unit and Tyndall Centre for Climate Change Research, University of East Anglia, 2015.

<sup>d</sup> A 'warm spell' day is a day when maximum temperature, together with that of at least the 6 consecutive previous days, exceeds the 90th percentile threshold for that time of the year.

## CURRENT AND FUTURE HEALTH RISKS DUE TO CLIMATE CHANGE

Human health is profoundly affected by weather and climate. Climate change threatens to exacerbate today's health problems – deaths from extreme weather events, cardiovascular and respiratory diseases, infectious diseases and malnutrition – whilst undermining water and food supplies, infrastructure, health systems and social protection systems.

### ANNUAL EXPOSURE TO FLOODING DUE TO SEA LEVEL RISE, PAKISTAN (2070–2100)

Severity of climate change scenario	Annual exposure to flooding (people)	
	Without Adaptation	With Adaptation
RCP2.6	950,300	1,000
RCP8.5	1,207,700	2,200

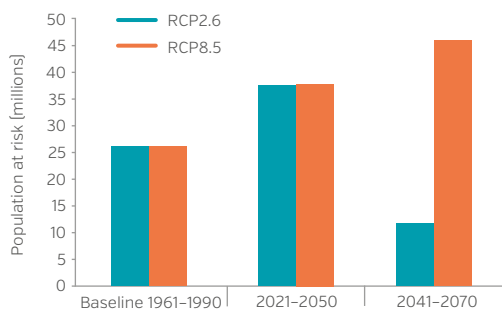
\* Medium ice melting scenario      \*\* Values rounded to nearest '00

Under a high emissions scenario, and without large investments in adaptation, an annual average of 1,207,700 people are projected to be affected by flooding due to sea level rise between 2070 and 2100. If global emissions decrease rapidly and there is a major scale up in protection (i.e. continued construction/raising of dikes) the annual affected population could be limited to about 1,000 people. Adaptation alone will not offer sufficient protection, as sea level rise is a long-term process, with high emissions scenarios bringing increasing impacts well beyond the end of the century.

Source: Human dynamics of climate change, technical report, Met Office, HM Government, UK, 2014.

### INFECTIOUS AND VECTOR-BORNE DISEASES

#### Population at risk of malaria in Pakistan (in millions)



Toward 2070, under a high emissions scenario about 46 million people are projected to be at risk of malaria annually. If global emissions decrease rapidly, the population at risk could be limited to about 12 million annually by 2070. Population growth can also cause increases in the population at-risk in areas where malaria presence is static in the future.

Source: Rocklöv, J., Quam, M. et al. 2015.<sup>d</sup>



#### KEY IMPLICATIONS FOR HEALTH

Pakistan also faces inland river flood risk. It is projected, that by 2030, an additional 1.5 million people may be at risk of river floods annually as a result of climate change and 638,800 due to socio-economic change above the estimated 714,800 annually affected population in 2010.<sup>a</sup>

In addition to deaths from drowning, flooding causes extensive indirect health effects, including impacts on food production, water provision, ecosystem disruption, infectious disease outbreak and vector distribution. Longer term effects of flooding may include post-traumatic stress and population displacement.



#### KEY IMPLICATIONS FOR HEALTH

Some of the world's most virulent infections are also highly sensitive to climate: temperature, precipitation and humidity have a strong influence on the life-cycles of the vectors and the infectious agents they carry and influence the transmission of water and food-borne diseases.<sup>b</sup>

Socioeconomic development and health interventions are driving down burdens of several infectious diseases, and these projections assume that this will continue. However, climate conditions are projected to become significantly more favourable for transmission, slowing progress in reducing burdens, and increasing the populations at risk if control measures are not maintained or strengthened.<sup>c</sup>

Projections indicate, the mean relative vectorial capacity for dengue fever transmission is projected to decrease slightly from 0.33 in the baseline years of 1961-1990 to about 0.29 towards 2070 under both a high and low emissions scenario. It should be noted that the geographic area of Pakistan which is considered above a suitable threshold for dengue fever transmission for at least 3 months of the year is projected to remain relatively constant from the baseline period towards 2070 [a geographic area of approximately 86 to 87%]. [Source: Rocklöv, J., Quam, M. et al., 2015].<sup>d</sup>

a World Resources Institute, <http://www.wri.org>. Aqueduct Global Flood Analyzer. Assumes continued current socioeconomic trends [SSP2] and a 25-year flood protection.

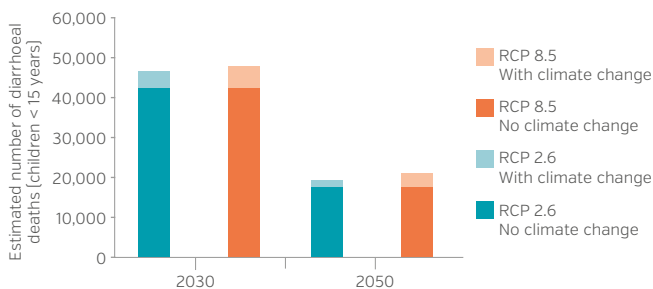
b Atlas of Health and Climate, World Health Organization and World Meteorological Organization, 2012.

c Quantitative risk assessment of the effects of climate change on selected causes of death, 2030s and 2050s. Geneva: World Health Organization, 2014.

d Country-level analysis, completed in 2015, was based on health models outlined in the Quantitative risk assessment of the effects of climate change on selected causes of death, 2030s and 2050s. Geneva: World Health Organization, 2014. The mean of impact estimates for three global climate models are presented. Models assume continued socioeconomic trends [SSP2 or comparable].

## INFECTIOUS AND VECTOR-BORNE DISEASES

### Estimated number of deaths due to diarrhoeal disease in children under 15 yrs in Pakistan (base case scenario for economic growth)

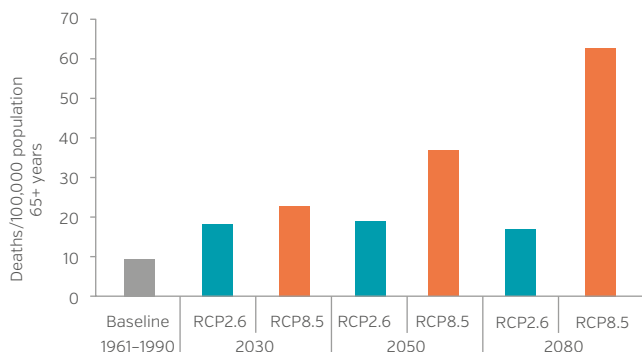


In the baseline year of 2008 there were an estimated 94,700 diarrhoeal deaths in children under 15 years old. Under a high emissions scenario, diarrhoeal deaths attributable to climate change in children under 15 years old are projected to be about 11.7% of the over 48,200 diarrhoeal deaths projected in 2030. Although diarrhoeal deaths are projected to decline to about 21,200 by 2050 the proportion of deaths attributable to climate change will rise to approximately 17.0%.

Source: Lloyd, S., 2015.<sup>a</sup>

## HEAT-RELATED MORTALITY

### Heat-related mortality in population 65 years or over, Pakistan (deaths / 100,000 population 65+ yrs)



Under a high emissions scenario heat-related deaths in the elderly (65+ years) are projected to increase to about 63 deaths per 100,000 by 2080 compared to the estimated baseline of under 10 deaths per 100,000 annually between 1961 and 1990. A rapid reduction in global emissions could limit heat-related deaths in the elderly to about 17 deaths per 100,000 in 2080.

Source: Honda et al., 2015.<sup>a</sup>



### KEY IMPLICATIONS FOR HEALTH

Climate change is expected to increase mean annual temperature and the intensity and frequency of heat waves resulting in a greater number of people at risk of heat-related medical conditions.

The elderly, children, the chronically ill, the socially isolated and at-risk occupational groups are particularly vulnerable to heat-related conditions.

## UNDERNUTRITION

Climate change, through higher temperatures, land and water scarcity, flooding, drought and displacement, negatively impacts agricultural production and causes breakdown in food systems. These disproportionately affect those most vulnerable people at risk to hunger and can lead to food insecurity. Vulnerable groups risk further deterioration into food and nutrition crises if exposed to extreme climate events.<sup>b</sup>

Without considerable efforts made to improve climate resilience, it has been estimated that the global risk of hunger and malnutrition could increase by up to 20 percent by 2050.<sup>b</sup>

In Pakistan, the prevalence of stunting in children under age 5 was 45.0% in 2013, the prevalence of underweight children and wasting in children under 5 was 31.6% and 10.5%, respectively, in 2013.<sup>c</sup>

<sup>a</sup> Country-level analysis, completed in 2015, was based on health models outlined in the Quantitative risk assessment of the effects of climate change on selected causes of death, 2030s and 2050s. Geneva: World Health Organization, 2014. The mean of impact estimates for three global climate models are presented. Models assume continued socioeconomic trends [SSP2 or comparable].

<sup>b</sup> World Food Project 2015 <https://www.wfp.org/content/two-minutes-climate-change-and-hunger>

<sup>c</sup> World Health Organization, Global Database on Child Growth and Malnutrition [2015 edition]. Please see source for definition of child malnutrition measures.

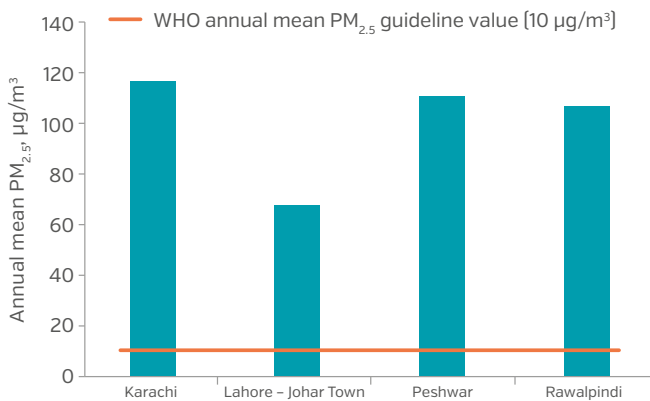
### 3

## CURRENT EXPOSURES AND HEALTH RISKS DUE TO AIR POLLUTION

Many of the drivers of climate change, such as inefficient and polluting forms of energy and transport systems, also contribute to air pollution. Air pollution is now one of the largest global health risks, causing approximately seven million deaths every year. There is an important opportunity to promote policies that both protect the climate at a global level, and also have large and immediate health benefits at a local level.

### OUTDOOR AIR POLLUTION EXPOSURE

Outdoor air pollution in cities in Pakistan  
annual mean PM<sub>2.5</sub> (µg/m<sup>3</sup>) 2010



The cities for which there was air pollution data available had annual mean PM<sub>2.5</sub> levels that were above the WHO guideline value of 10 µg/m<sup>3</sup>.

Source: Ambient Air Pollution Database, WHO, May 2014.



#### KEY IMPLICATIONS FOR HEALTH

Outdoor air pollution can have direct and sometimes severe consequences for health.

Fine particles which penetrate deep into the respiratory tract subsequently increase mortality from respiratory infections, lung cancer and cardiovascular disease.

### HOUSEHOLD AIR POLLUTION

#### PAKISTAN

Percentage of population primarily using solid fuels for cooking [%], 2013



RURAL  
AREAS  
**84**



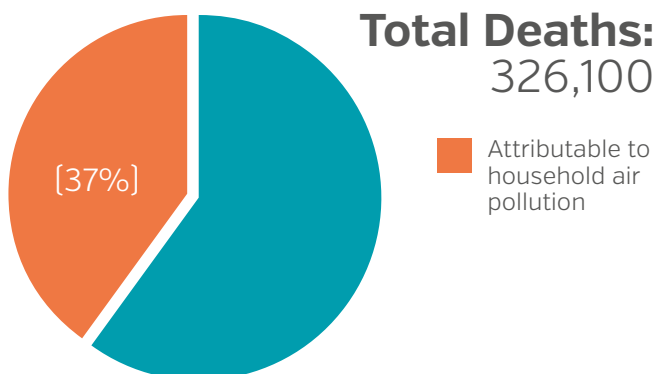
URBAN  
AREAS  
**14**



NATIONAL  
TOTAL  
**58**

Source: Global Health Observatory, data repository, World Health Organization, 2013.

Percent of total deaths from ischaemic heart disease, stroke, lung cancer, chronic obstructive pulmonary disease (18 years +) and acute lower respiratory infections (under 5 years) attributable to household air pollution, 2012.



Source: Global Health Observatory, data repository, World Health Organization, 2012.



#### KEY IMPLICATIONS FOR HEALTH

Air pollution in and around the home is largely a result of the burning of solid fuels (biomass or coal) for cooking.

Women and children are at a greater risk for disease from household air pollution. Consequently, household air pollution is responsible for a larger proportion of the of total number of deaths from ischaemic heart disease, stroke, lung cancer and COPD in women compared to men.<sup>a</sup>

In Pakistan, 52% percent of an estimated 68,200 child deaths due to acute lower respiratory infections is attributable to household air pollution (WHO, 2012).

a Annu. Rev. Public. Health. 2014.35:185-206. [http://www.who.int/phe/health\\_topics/outdoorair/databases/HAP\\_BoD\\_results\\_March2014.pdf?ua=1](http://www.who.int/phe/health_topics/outdoorair/databases/HAP_BoD_results_March2014.pdf?ua=1)

## CO-BENEFITS TO HEALTH FROM CLIMATE CHANGE MITIGATION: A GLOBAL PERSPECTIVE

Health co-benefits are local, national and international measures with the potential to simultaneously yield large, immediate public health benefits and reduce the upward trajectory of greenhouse gas emissions. Lower carbon strategies can also be cost-effective investments for individuals and societies.

Presented here are examples, from a global perspective, of opportunities for health co-benefits that could be realised by action in important greenhouse gas emitting sectors.<sup>a</sup>

### Transport

Transport injuries lead to 1.2 million deaths every year, and land use and transport planning contribute to the 2–3 million deaths from physical inactivity. The transport sector is also responsible for some 14% (7.0 GtCO<sub>2</sub>e) of global carbon emissions. The IPCC has noted significant opportunities to reduce energy demand in the sector, potentially resulting in a 15%–40% reduction in CO<sub>2</sub> emissions, and bringing substantial opportunities for health: A modal shift towards walking and cycling could see reductions in illnesses related to physical inactivity and reduced outdoor air pollution and noise exposure; increased use of public transport is likely to result in reduced GHG emissions; compact urban planning fosters walkable residential neighborhoods, improves accessibility to jobs, schools and services and can encourage physical activity and improve health equity by making urban services more accessible to the elderly and poor.



### Electricity Generation

Reliable electricity generation is essential for economic growth, with 1.4 billion people living without access to electricity. However, current patterns of electricity generation in many parts of the world, particularly the reliance on coal combustion in highly polluting power plants contributes heavily to poor local air quality, causing cancer, cardiovascular and respiratory disease. Outdoor air pollution is responsible for 3.7 million premature deaths annually, 88% of these deaths occur in low and middle income countries. The health benefits of transitioning from fuels such as coal to lower carbon sources, including ultimately to renewable energy, are clear: Reduced rates of cardiovascular and respiratory disease such as stroke, lung cancer, coronary artery disease, and COPD; cost-savings for health systems; improved economic productivity from a healthier and more productive workforce.



### Household Heating, Cooking and Lighting

Household air pollution causes over 4.3 million premature deaths annually, predominantly due to stroke, ischaemic heart disease, chronic respiratory disease, and childhood pneumonia. A range of interventions can both improve public health and reduce household emissions: a transition from the inefficient use of solid fuels like wood and charcoal, towards cleaner energy sources like liquefied petroleum gas (LPG), biogas, and electricity could save lives by reducing indoor levels of black carbon and other fine particulate matter; where intermediate steps are necessary, lower emission transition fuels and technologies should be prioritized to obtain respiratory and heart health benefits; women and children are disproportionately affected by household air pollution, meaning that actions to address household air pollution will yield important gains in health equity; replacing kerosene lamps with cleaner energy sources [e.g. electricity, solar] will reduce black carbon emissions and the risk of burns and poisoning.



### Healthcare Systems

Health care activities are an important source of greenhouse gas emissions. In the US and in EU countries, for example, health care activities account for between 3–8% of greenhouse gas (CO<sub>2</sub>-eq) emissions. Major sources include procurement and inefficient energy consumption. Modern, on-site, low-carbon energy solutions [e.g. solar, wind, or hybrid solutions] and the development of combined heat and power generation capacity in larger facilities offer significant potential to lower the health sector's carbon footprint, particularly when coupled with building and equipment energy efficiency measures. Where electricity access is limited and heavily reliant upon diesel generators, or in the case of emergencies when local energy grids are damaged or not operational, such solutions can also improve the quality and reliability of energy services. In this way, low carbon energy for health care could not only mitigate climate change, it could enhance access to essential health services and ensure resilience.



In Pakistan, by 2030, an estimated 90,600 annual deaths due to outdoor air pollution may be avoided and near-term climate change mitigated by implementing 14 short lived climate pollutant reduction measures.

Source: Shindell, D., et al, Science, 2012.

<sup>a</sup> For a complete list of references used in the health co-benefits text please see the Climate and Health Country Profile Reference Document, <http://www.who.int/globalchange/en/>

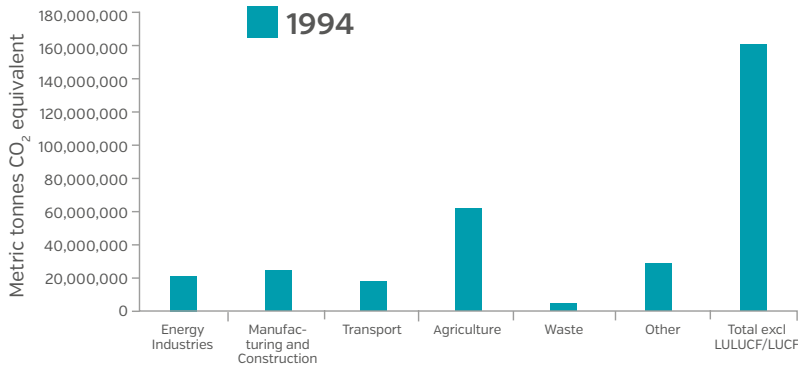


# 5

## EMISSIONS AND COMMITMENTS

Global carbon emissions increased by 80% from 1970 to 2010, and continue to rise.<sup>a,b</sup> Collective action is necessary, but the need and opportunity to reduce greenhouse gas emissions varies between countries. Information on the contribution of different sectors, such as energy, manufacturing, transport and agriculture, can help decision-makers to identify the largest opportunities to work across sectors to protect health, and address climate change.

### PAKISTAN ANNUAL GREENHOUSE GAS EMISSIONS (metric tonnes CO<sub>2</sub> equivalent)



Source: UNFCCC Greenhouse Gas Data Inventory, UNFCCC [2015].

A 2°C upper limit of temperature increase relative to pre-industrial levels has been internationally agreed in order to prevent severe and potentially catastrophic impacts from climate change. Reductions are necessary across countries and sectors. In order to stay below the 2°C upper limit it is estimated that global annual CO<sub>2</sub>-energy emissions, currently at 5.2 tons per capita, need to be reduced to 1.6 tons per capita.<sup>c</sup>

The most recent greenhouse gas emissions data for Pakistan was in the year 1994. At that time, carbon emissions were highest in the agriculture and manufacturing/construction sectors. Through intersectoral collaboration, the health community can help to identify the best policy options not only to eventually stabilize greenhouse gas emissions, but also to provide the largest direct benefits to health.

### NATIONAL RESPONSE<sup>d</sup>

<b>1994</b>	<b>PAKISTAN IS PARTY TO THE UNFCCC</b>
<b>2005</b>	<b>PAKISTAN RATIFIED THE KYOTO PROTOCOL</b>
<b>2012</b>	<b>NATIONAL CLIMATE CHANGE POLICY</b>
<b>2014–2030</b>	<b>THE FRAMEWORK FOR IMPLEMENTATION OF CLIMATE CHANGE POLICY</b>
<b>2025</b>	<b>PAKISTAN VISION 2025: A “ROADMAP OF ECONOMIC GROWTH, SOCIAL INCLUSION AND SUSTAINABLE DEVELOPMENT” [PAKISTAN INDC 2015]</b>

a Boden, T.A., G. Marland, and R.J. Andres [2010]. Global, Regional, and National Fossil-Fuel CO<sub>2</sub> Emissions. Carbon Dioxide Information Analysis Center, Oak Ridge National Laboratory, U.S. Department of Energy, Oak Ridge, Tenn., U.S.A. doi 10.3334/CDIAC/00001\_V2010.

b IPCC [2014] Blanco G., R. Gerlagh, S. Suh, J. Barrett, H.C. de Coninck, C.F. Diaz Morejon, R. Mathur, N. Nakicenovic, A. Ofosu Ahenkora, J. Pan, H. Pathak, J. Rice, R. Richels, S.J. Smith, D.I. Stern, F.L. Toth, and P. Zhou, 2014: Drivers, Trends and Mitigation. In: Climate Change 2014: Mitigation of Climate Change. Contribution of Working Group III to the Fifth Assessment Report of the Intergovernmental Panel on Climate Change [Edenhofer, O., R. Pichs-Madruga, Y. Sokona, E. Farahani, S. Kadner, K. Seyboth, A. Adler, I. Baum, S. Brunner, P. Eickemeier, B. Kriemann, J. Savolainen, S. Schlömer, C. von Stechow, T. Zwickel and J.C. Minx (eds.)], Cambridge University Press, Cambridge, United Kingdom

c Pathways to deep decarbonization, Sustainable development Solutions Network, 2014 report.

d Columbia Law School, 'Climate Change Laws Of The World'. N.p., 2015.

## 6

## NATIONAL POLICY RESPONSE

The following table outlines the status of development or implementation of climate resilient measures, plans or strategies for health adaptation and mitigation of climate change [reported by countries].<sup>a</sup>

<b>GOVERNANCE AND POLICY</b>	
Country has identified a national focal point for climate change in the Ministry of Health	✓
Country has a national health adaptation strategy approved by relevant government body	✗
The National Communication submitted to UNFCCC includes health implications of climate change mitigation policies	✗
<b>HEALTH ADAPTATION IMPLEMENTATION</b>	
Country is currently implementing projects or programmes on health adaptation to climate change	✓
Country has implemented actions to build institutional and technical capacities to work on climate change and health	✓
Country has conducted a national assessment of climate change impacts, vulnerability and adaptation for health	✗
Country has climate information included in Integrated Disease Surveillance and Response (IDSR) system, including development of early warning and response systems for climate-sensitive health risks	✗
Country has implemented activities to increase climate resilience of health infrastructure	✗
<b>FINANCING AND COSTING MECHANISMS</b>	
Estimated costs to implement health resilience to climate change included in planned allocations from domestic funds in the last financial biennium	✗
Estimated costs to implement health resilience to climate change included in planned allocations from international funds in the last financial biennium	✗
<b>HEALTH BENEFITS FROM CLIMATE CHANGE MITIGATION</b>	
The national strategy for climate change mitigation includes consideration of the health implications (health risks or co-benefits) of climate change mitigation actions	✓
Country has conducted valuation of co-benefits of health implications of climate mitigation policies	✗

a Supporting monitoring efforts on health adaptation and mitigation of climate change: a systematic approach for tracking progress at the global level. WHO survey, 2015.

For further information please contact:

**World Health Organization**

20 Avenue Appia  
1211 Geneva 27  
Switzerland

Tel.: +41 22 791 3281 | Fax: +41 22 791 4853  
<http://www.who.int/globalchange/en/>



**United Nations**

Framework Convention on  
Climate Change

© World Health Organization 2016

All reasonable precautions have been taken by the World Health Organization to verify the information contained in this publication. However, the published material is being distributed without warranty of any kind, either expressed or implied. The responsibility for the interpretation and use of the material lies with the reader. In no event shall the World Health Organization be liable for damages arising from its use.

The estimates and projections provided in this document have been derived using standard categories and methods to enhance their cross-national comparability. As a result, they should not be regarded as the nationally endorsed statistics of Member States which may have been derived using alternative methodologies.

To ensure readability, health estimates and projections have been presented without the margins of uncertainty which are available upon request.