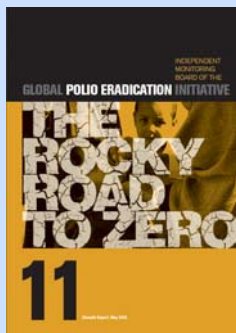


## HIGHLIGHTS

### Independent Monitoring Board (IMB) of the Global Polio Eradication Initiative 11th report: May 2015

The 11th IMB report acknowledges that over recent years, the global polio eradication programme has been constantly improving its performance leading to significant achievements. Since August 2014, the wild polio virus has been detected in just two countries, Afghanistan and Pakistan. Nigeria has not had a case since July 2014. The three recent regional outbreaks – in the Middle East, the Horn of Africa, and Central Africa – have been quiescent since that time.



Although the current sense of optimism has some real basis to it, it is well recognized that security, operational and political problems can suddenly arise, disrupting the programme's progress and resulting in resurgence of polio cases in already polio free countries (polio outbreak in Tajikistan in 2010).

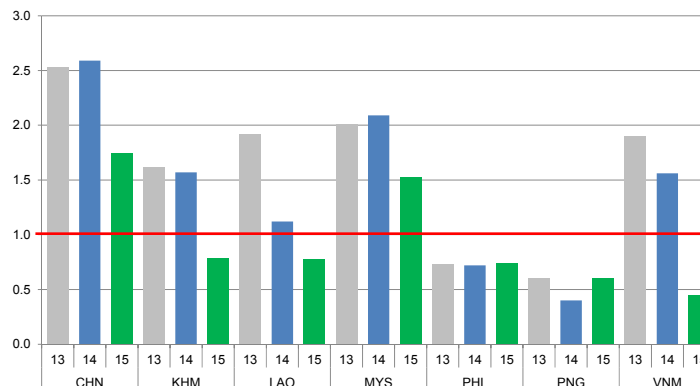
The report urges the global polio eradication programme to embrace, with determination and passion, the culture and methods of quality improvement. The IMB has made a series of recommendations intended to catalyse the further changes that are required.

Full report with detailed recommendations is available at: <http://www.polioeradication.org>.

## CONTACT US

Expanded Programme on Immunization  
Regional Office for the Western Pacific  
World Health Organization  
P.O. Box 2932, 1000 Manila, Philippines  
Phone: +63 2 5288001  
Fax: +63 2 5211036, 5260279  
Email: [WPR\\_EPIData@wpro.who.int](mailto:WPR_EPIData@wpro.who.int)  
Web: [www.wpro.who.int/immunization](http://www.wpro.who.int/immunization)

Chart 1. Non-polio AFP rate (per 100 000 persons < 15 years of age), 2013–2015\*



\* AFP rate annualized as of week 23

Chart 2. Adequate specimen collection rate, 2013–2015

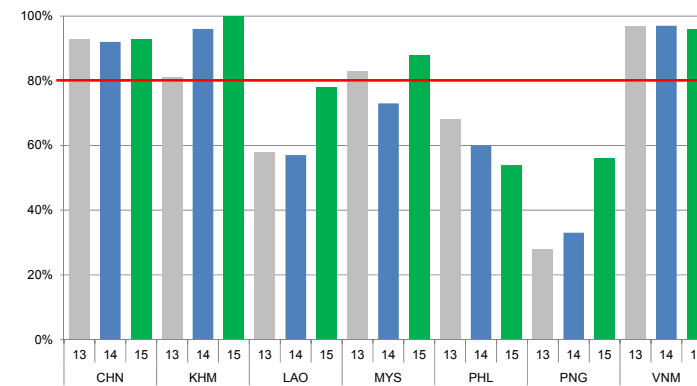


Chart 3. Percentage of reported AFP cases by number of polio vaccination doses, 2015

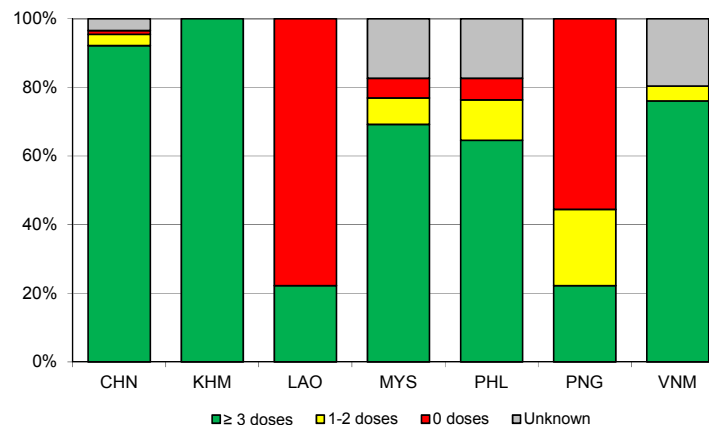
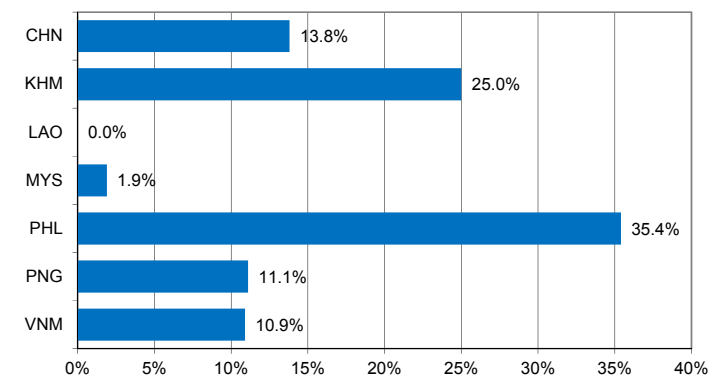


Chart 4. Percentage of reported AFP cases with pending classification > 90 days after onset, 2015



Note: Priority countries were selected for the charts. Official WHO acronyms have been used for abbreviation: CHN (China), KHM (Cambodia), LAO (Lao People's Democratic Republic), MYS (Malaysia), PHL (Philippines), PNG (Papua New Guinea), and VNM (Viet Nam).

Table 1A. Classification of AFP cases with onset in 2014 and key surveillance indicators

	2013		2014												
	Total reported cases	Annual expected cases <15 years of age	Total reported cases	Classification						Indicators				Latest report date <sup>5</sup>	Days since last report <sup>6</sup>
				Confirmed wild poliovirus	Vaccine-derived poliovirus (VDPV)	Polio-compatible	Discarded (Non-polio)	Pending		Non-polio AFP rate	% with adequate specimens <sup>2</sup>	% investigated ≤ 2 days of notification <sup>3</sup>	% with 60-day follow-up <sup>4</sup>		
								Total	> 90 days <sup>1</sup> # (%)						≥ 1
Australia	62	44	60	0	0	2	58	0	0 (0.0%)	1.36	50%	83%	0%	07-Apr-15	-
Brunei Darussalam	1	1	4	0	0	0	4	0	0 (0.0%)	4.00	75%	100%	100%	07-Apr-15	-
Cambodia	73	46	72	0	0	0	72	0	0 (0.0%)	1.57	96%	93%	100%	14-May-15	-
China	5623	2225	5758	0	2	0	5756	0	0 (0.0%)	2.59	92%	100%	96%	13-May-15	-
China, Hong Kong SAR	12	8	19	0	0	0	19	0	0 (0.0%)	2.38	89%	100%	100%	05-Mar-15	-
China, Macao SAR	1	1	1	0	0	0	1	0	0 (0.0%)	1.00	0%	100%	100%	13-Jan-15	-
Japan	0	167	0	-	-	-	-	-	-	-	-	-	-	-	-
Lao People's Democratic Republic	48	25	28	0	0	0	28	0	0 (0.0%)	1.12	57%	93%	83%	27-Apr-15	-
Malaysia	155	77	161	0	0	0	161	0	0 (0.0%)	2.09	73%	87%	100%	10-Mar-15	-
Mongolia	7	8	9	0	0	0	9	0	0 (0.0%)	1.13	89%	100%	100%	05-Mar-15	-
New Zealand	12	9	8	0	0	0	8	0	0 (0.0%)	0.89	38%	100%	80%	11-Mar-15	-
Papua New Guinea	18	30	12	0	0	0	12	0	0 (0.0%)	0.40	33%	75%	0%	07-Apr-15	-
Philippines	277	378	274	0	1	0	270	3	3 (1.1%)	0.72	60%	97%	6%	11-May-15	28
Republic of Korea	84	72	88	0	0	0	88	0	0 (0.0%)	1.22	86%	98%	100%	16-Feb-15	-
Singapore	7	6	8	0	0	0	8	0	0 (0.0%)	1.33	75%	88%	100%	07-Jan-15	-
Viet Nam	459	231	361	0	0	0	361	0	0 (0.0%)	1.56	97%	93%	100%	14-Apr-15	-
Pacific island countries and areas	8	10	15	0	0	0	10	5	5 (33.3%)	1.50	67%	93%	80%	23-Mar-15	77
<b>Total</b>	<b>6847</b>	<b>3338</b>	<b>6878</b>	<b>0</b>	<b>3</b>	<b>2</b>	<b>6865</b>	<b>8</b>	<b>8 (0.1%)</b>	<b>2.06</b>	<b>90%</b>	<b>99%</b>	<b>77%</b>		

1. Number (%) of reported cases pending classification more than 90 days from date of onset of paralysis to date of last report
2. Percentage of reported cases with two stool specimens collected 24 hours apart and within 14 days of onset of paralysis
3. Percentage of reported cases investigated within two days of notification
4. Percentage of reported cases with inadequate specimens for which the 60-day follow-up evaluation has been completed
5. Report date is fixed as soon as all cases for the year have been classified
6. Countries are expected to submit data at least once per month to WPRO

Green	Reached or surpassed target
Yellow	Nearly reached target: 0.5–0.99 for non-polio AFP rate; 60–79% for other indicators
Red	Substantially below target

Table 1B. Classification of AFP cases with onset in 2015 and key surveillance indicators

	2014		2015												
	Total reported cases	Annual expected cases <15 years of age	Total reported cases	Classification						Indicators				Latest report date	Days since last report <sup>6</sup>
				Confirmed wild poliovirus	Vaccine-derived poliovirus (VDPV)	Polio-compatible	Discarded (Non-polio)	Pending		Non-polio AFP rate <sup>2</sup>	% with adequate specimens <sup>3</sup>	% investigated ≤ 2 days of notification <sup>4</sup>	% with 60-day follow-up <sup>5</sup>		
								Total	> 90 days <sup>1</sup> # (%)						
Australia	60	44	13	0	0	0	6	7	0 (0.0%)	0.67	8%	100%	0%	19-May-15	20
Brunei Darussalam	4	1	1	0	0	0	1	0	0 (0.0%)	2.26	100%	100%	-	15-Apr-15	54
Cambodia	72	46	16	0	0	0	0	16	4 (25.0%)	0.79	100%	100%	-	30-May-15	9
China	5758	2234	1723	0	0	0	802	921	238 (13.8%)	1.74	93%	100%	71%	03-Jun-15	5
China, Hong Kong SAR	19	8	6	0	0	0	5	1	0 (0.0%)	1.70	83%	100%	100%	06-May-15	33
China, Macao SAR	1	1	1	0	0	0	0	1	0 (0.0%)	2.26	100%	100%	-	15-May-15	24
Japan	0	163	0	-	-	-	-	-	-	-	-	-	-	-	-
Lao People's Democratic Republic	28	26	9	0	0	0	6	3	0 (0.0%)	0.78	78%	89%	50%	18-May-15	21
Malaysia	161	77	52	0	0	0	35	17	1 (1.9%)	1.53	88%	63%	50%	18-May-15	21
Mongolia	9	9	4	0	0	0	3	1	0 (0.0%)	1.00	100%	100%	-	08-Jun-15	0
New Zealand	8	9	1	0	0	0	0	1	0 (0.0%)	0.25	100%	100%	-	28-Apr-15	41
Papua New Guinea	12	34	9	0	0	0	6	3	1 (11.1%)	0.60	56%	78%	0%	07-May-15	32
Philippines	274	387	127	0	0	0	0	127	45 (35.4%)	0.74	54%	97%	7%	11-May-15	28
Republic of Korea	88	70	26	0	0	0	23	3	0 (0.0%)	0.84	85%	100%	100%	19-May-15	20
Singapore	8	6	3	0	0	0	3	0	0 (0.0%)	1.13	100%	100%	-	08-Jun-15	0
Viet Nam	361	231	46	0	0	0	2	44	5 (10.9%)	0.45	96%	96%	0%	14-Apr-15	55
Pacific island countries and areas	15	10	0	-	-	-	-	-	-	-	-	-	-	11-May-15	28
<b>Total</b>	<b>6878</b>	<b>3356</b>	<b>2037</b>	<b>0</b>	<b>0</b>	<b>0</b>	<b>892</b>	<b>1145</b>	<b>294 (14.4%)</b>	<b>1.37</b>	<b>90%</b>	<b>98%</b>	<b>47%</b>		

1. Number (%) of reported cases pending classification more than 90 days from date of onset of paralysis to date of last report
2. Annualized non-polio AFP rate per 100 000 population under 15 years of age
3. Percentage of reported cases with two stool specimens collected 24 hours apart and within 14 days of onset of paralysis
4. Percentage of reported cases investigated within two days of notification
5. Percentage of reported cases with inadequate specimens for which the 60-day follow-up evaluation has been completed
6. Countries are expected to submit data at least once per month to WPRO

Green	Reached or surpassed target
Yellow	Nearly reached target: 0.5–0.99 for non-polio AFP rate; 60–79% for other indicators
Red	Substantially below target

Table 2A. Laboratory investigation of AFP cases with onset in 2014 and key laboratory indicators

Country	National polio laboratory	Total no. of AFP cases with specimens	Virus isolation results							% specimens positive for NPEV	Latest report date	Intratyptic differentiation/ Sequencing lab <sup>1</sup>	No. of isolates received	Intratyptic differentiation (ITD)/sequencing results																
			L20B positive	L20B positive + NPEV	NPEV only	Negative	Pending ≤ 14 days	Pending > 14 days	% results reported ≤ 14 days <sup>2</sup>					Type 1			Type 2			Type 3			NPEV <sup>3</sup>	Pending ITD	Discordant pending sequencing	% ITD results reported ≤ 7 days of receipt ≥ 80%				
														Wild	Sabin	VDPV	Wild	Sabin	VDPV	Wild	Sabin	VDPV								
Australia	VIDRL	45	0	0	2	43	0	0	96%	2%	22-Jan-15	VIDRL	0	-	-	-	-	-	-	-	-	-	-	-	-	-	-	-	-	-
Brunei Darussalam	VIDRL	2	0	0	0	2	0	0	50%	0%	22-Jan-15	VIDRL	0	-	-	-	-	-	-	-	-	-	-	-	-	-	-	-	-	-
Cambodia	NIID	73	5	0	12	56	0	0	96%	14%	02-Feb-15	NIID	10	0	0	0	0	10	0	0	0	0	0	0	0	0	0	0	0	100%
China		5694	112	1	588	4993	0	0	75%	9%	13-May-15		307	0	72	0	0	106	4	0	116	2	7	0	0	0	0	0	95%	
China, Anhui	Prov. Lab	334	20	0	26	288	0	0	83%	7%		Prov. Lab/CCDC	45	0	10	0	0	14	0	0	21	0	0	0	0	0	0	0	91%	
China, Beijing	Prov. Lab	41	1	0	0	40	0	0	82%	0%		Prov. Lab/CCDC	11	0	3	0	0	1	0	0	7	0	0	0	0	0	0	0	100%	
China, Fujian	Prov. Lab	213	2	0	27	184	0	0	92%	10%		Prov. Lab/CCDC	3	0	0	0	0	0	0	0	3	0	0	0	0	0	0	0	100%	
China, Gansu	Prov. Lab	121	0	0	8	113	0	0	79%	5%		Prov. Lab/CCDC	6	0	2	0	0	2	0	0	2	0	0	0	0	0	0	0	100%	
China, Guangdong	Prov. Lab	354	4	0	47	303	0	0	81%	11%		Prov. Lab/CCDC	9	0	4	0	0	3	0	0	2	0	0	0	0	0	0	0	78%	
China, Guangxi	Prov. Lab	278	6	0	57	215	0	0	64%	17%		Prov. Lab/CCDC	12	0	0	0	0	7	0	0	5	0	0	0	0	0	0	0	100%	
China, Hebei	Prov. Lab	332	11	1	37	283	0	0	69%	8%		Prov. Lab/CCDC	11	0	2	0	0	6	2	0	1	0	0	0	0	0	0	0	100%	
China, Heilongjiang	Prov. Lab	150	2	0	7	141	0	0	89%	4%		Prov. Lab/CCDC	6	0	0	0	0	2	0	0	3	0	1	0	0	0	0	0	100%	
China, Henan	Prov. Lab	535	4	0	61	470	0	0	80%	9%		Prov. Lab/CCDC	6	0	1	0	0	2	0	0	3	0	0	0	0	0	0	0	75%	
China, Hunan	Prov. Lab	267	4	0	37	226	0	0	90%	13%		Prov. Lab/CCDC	4	0	2	0	0	2	0	0	0	0	0	0	0	0	0	0	100%	
China, Jiangsu	Prov. Lab	319	18	0	3	298	0	0	79%	1%		Prov. Lab/CCDC	44	0	7	0	0	15	0	0	20	2	0	0	0	0	0	0	97%	
China, Jiangxi	Prov. Lab	190	2	0	27	161	0	0	92%	13%		Prov. Lab/CCDC	4	0	1	0	0	0	0	0	1	0	2	0	0	0	0	0	100%	
China, Jilin	Prov. Lab	54	1	0	7	46	0	0	66%	11%		Prov. Lab/CCDC	4	0	1	0	0	1	0	0	2	0	0	0	0	0	0	0	100%	
China, Shaanxi	Prov. Lab	95	1	0	2	92	0	0	89%	2%		Prov. Lab/CCDC	2	0	0	0	0	2	0	0	0	0	0	0	0	0	0	0	100%	
China, Shandong	Prov. Lab	397	5	0	39	353	0	0	83%	7%		Prov. Lab/CCDC	8	0	3	0	0	3	0	0	2	0	0	0	0	0	0	0	100%	
China, Shanghai	Prov. Lab	29	2	0	0	27	0	0	98%	0%		Prov. Lab/CCDC	6	0	0	0	0	2	0	0	4	0	0	0	0	0	0	0	100%	
China, Shanxi	Prov. Lab	205	4	0	2	199	0	0	55%	1%		Prov. Lab/CCDC	12	0	2	0	0	6	2	0	2	0	0	0	0	0	0	0	90%	
China, Sichuan	Prov. Lab	411	4	0	42	365	0	0	42%	9%		Prov. Lab/CCDC	10	0	4	0	0	4	0	0	2	0	0	0	0	0	0	0	100%	
China, Tianjin	Prov. Lab	27	0	0	3	24	0	0	93%	9%		Prov. Lab/CCDC	10	0	2	0	0	4	0	0	4	0	0	0	0	0	0	0	100%	
China, Xinjiang	Prov. Lab	98	1	0	5	92	0	0	96%	4%		Prov. Lab/CCDC	6	0	4	0	0	2	0	0	0	0	0	0	0	0	0	0	100%	
China, Yunnan	Prov. Lab	267	11	0	39	217	0	0	51%	11%		Prov. Lab/CCDC	24	0	7	0	0	7	0	0	10	0	0	0	0	0	0	0	93%	
China, Zhejiang	Prov. Lab	189	2	0	20	167	0	0	69%	8%		Prov. Lab/CCDC	8	0	0	0	0	2	0	0	4	0	2	0	0	0	0	0	100%	
China, Chongqing	Prov. Lab	73	0	0	14	59	0	0	71%	15%		CCDC	4	0	0	0	0	2	0	0	2	0	0	0	0	0	0	0	100%	
China, Guizhou	Prov. Lab	206	0	0	23	183	0	0	90%	10%		CCDC	13	0	0	0	0	7	0	0	6	0	0	0	0	0	0	0	82%	
China, Hainan	Prov. Lab	43	0	0	7	36	0	0	76%	14%		CCDC	0	-	-	-	-	-	-	-	-	-	-	-	-	-	-	-	-	
China, Hubei	Prov. Lab	186	2	0	23	161	0	0	60%	12%		CCDC	6	0	4	0	0	0	0	0	2	0	0	0	0	0	0	0	100%	
China, Liaoning	Prov. Lab	137	1	0	18	118	0	0	85%	11%		CCDC	19	0	9	0	0	4	0	0	4	0	2	0	0	0	0	0	100%	
China, Neimongol	Prov. Lab	88	2	0	3	83	0	0	64%	2%		CCDC	8	0	4	0	0	2	0	0	2	0	0	0	0	0	0	0	100%	
China, Ningxia	Prov. Lab	31	2	0	0	29	0	0	76%	0%		CCDC	6	0	0	0	0	4	0	0	2	0	0	0	0	0	0	0	100%	
China, Qinghai	Prov. Lab	21	0	0	4	17	0	0	93%	17%		CCDC	0	-	-	-	-	-	-	-	-	-	-	-	-	-	-	-	-	
China, Tibet	Prov. Lab	3	0	0	0	3	0	0	75%	0%		CCDC	0	-	-	-	-	-	-	-	-	-	-	-	-	-	-	-	-	
China, Hong Kong SAR	PHLC	19	0	0	4	15	0	0	93%	11%	13-Jan-15	PHLC	0	-	-	-	-	-	-	-	-	-	-	-	-	-	-	-	-	
China, Macao SAR	PHLC	0	-	-	-	-	-	-	-	-	13-Jan-15	PHLC	0	-	-	-	-	-	-	-	-	-	-	-	-	-	-	-	-	
Japan	NIID	0	-	-	-	-	-	-	-	-	-	NIID	0	-	-	-	-	-	-	-	-	-	-	-	-	-	-	-	-	
Lao People's Democratic Republic	NIID	25	1	0	5	19	0	0	100%	18%	22-Jan-15	NIID	0	-	-	-	-	-	-	-	-	-	-	-	-	-	-	-	-	
Malaysia	IMR	164	0	0	4	160	0	0	100%	2%	10-Feb-15	IMR	0	-	-	-	-	-	-	-	-	-	-	-	-	-	-	-	-	
Mongolia	PHI	9	0	0	1	8	0	0	100%	11%	16-Mar-15	NIID	0	-	-	-	-	-	-	-	-	-	-	-	-	-	-	-	-	
New Zealand	IESR	5	0	0	1	4	0	0	91%	18%	12-Jan-15	IESR	0	-	-	-	-	-	-	-	-	-	-	-	-	-	-	-	-	
Papua New Guinea	VIDRL	10	0	1	4	5	0	0	100%	50%	22-Jan-15	VIDRL	4	0	0	0	0	0	0	0	2	0	2	0	0	0	0	0	100%	
Philippines	RITM	342	5	0	13	324	0	0	88%	3%	11-Mar-15	RITM	13	0	4	0	0	6	1	0	2	0	0	0	0	0	0	0	100%	
Republic of Korea	NIH	88	0	1	8	80	0	0	97%	10%	16-Feb-15	NIH	2	0	0	0	0	0	0	0	0	0	2	0	0	0	0	0	100%	
Singapore	SGH	8	0	0	0	8	0	0	100%	0%	14-Jan-15	SGH	0	-	-	-	-	-	-	-	-	-	-	-	-	-	-	-	-	
Viet Nam (North)	NIHE	216	0	0	30	186	0	0	100%	12%	11-Feb-15	NIHE	0	-	-	-	-	-	-	-	-	-	-	-	-	-	-	-	-	
Viet Nam (South)	PI	136	0	0	16	120	0	0	93%	11%	21-Jan-15	PI	0	-	-	-	-	-	-	-	-	-	-	-	-	-	-	-	-	
Pacific island countries and areas	VIDRL	12	0	0	1	11	0	0	100%	4%	22-Jan-15	VIDRL	0	-	-	-	-	-	-	-	-	-	-	-	-	-	-	-	-	
<b>Total</b>		<b>6848</b>	<b>123</b>	<b>3</b>	<b>689</b>	<b>6034</b>	<b>0</b>	<b>0</b>	<b>76%</b>	<b>9%</b>			<b>336</b>	<b>0</b>	<b>76</b>	<b>0</b>	<b>0</b>	<b>122</b>	<b>5</b>	<b>0</b>	<b>120</b>	<b>2</b>	<b>11</b>	<b>0</b>	<b>0</b>	<b>0</b>	<b>0</b>	<b>96%</b>		

1. CCDC (Chinese Center for Disease Control and Prevention, China); IESR (Institute of Environmental Science and Research, New Zealand); IMR (Institute of Medical Research, Malaysia); NIH (National Institute of Health, Republic of Korea); NIHE (National Institute of Hygiene and Epidemiology, Ha Noi, Viet Nam); NIID (National Institute of Infectious Diseases, Japan); PHI (Public Health Institute, Mongolia); PHLC (Public Health Laboratory Center, China, Hong Kong SAR); PI (Pasteur Institute, Ho Chi Minh, Viet Nam); RITM (Research Institute for Tropical Medicine, Philippines); SGH (Singapore General Hospital); VIDRL (Victorian Infectious Diseases Reference Laboratory, Australia)

2. The target of 14 days for the timeliness of virus isolation will be used for all polio laboratories

3. NPEV growing in L20B cells



Table 3A. Laboratory confirmation of polio isolates from other sources in 2014 <sup>1</sup>

Country	Intratype differentiation lab <sup>2</sup>	Non-AFP cases												Environmental samples																
		Total number of non-AFP cases tested for polio	Total number of non-AFP cases with polio isolates	Type 1			Type 2			Type 3			NPEV	Pending ITD	Discordant pending sequencing	Total number of samples processed	Total number of samples with polio isolates	Type 1			Type 2			Type 3			NPEV	Pending ITD	Discordant pending sequencing	
				Wild	Sabin	VDPV	Wild	Sabin	VDPV	Wild	Sabin	VDPV						Wild	Sabin	VDPV	Wild	Sabin	VDPV	Wild	Sabin	VDPV				
Australia	VIDRL	96	0	0	0	0	0	0	0	0	0	0	0	0	0	3	0	-	-	-	-	-	-	-	-	-	-	3	0	0
Brunei Darussalam	VIDRL	0	-	-	-	-	-	-	-	-	-	-	-	-	-	0	-	-	-	-	-	-	-	-	-	-	-	-	-	-
Cambodia	NIID	0	-	-	-	-	-	-	-	-	-	-	-	-	-	0	-	-	-	-	-	-	-	-	-	-	-	-	-	-
China		3	3	0	3	0	0	0	0	0	1	0	0	0	0	167	167	0	79	0	0	129	2	0	115	0	0	0	0	0
China, Anhui	Prov. Lab/CCDC	0	-	-	-	-	-	-	-	-	-	-	-	-	-	0	-	-	-	-	-	-	-	-	-	-	-	-	-	-
China, Beijing	Prov. Lab/CCDC	0	-	-	-	-	-	-	-	-	-	-	-	-	-	0	-	-	-	-	-	-	-	-	-	-	-	-	-	-
China, Fujian	Prov. Lab/CCDC	0	-	-	-	-	-	-	-	-	-	-	-	-	-	14	14	0	1	0	0	4	0	0	0	0	0	0	0	0
China, Gansu	Prov. Lab/CCDC	0	-	-	-	-	-	-	-	-	-	-	-	-	-	0	-	-	-	-	-	-	-	-	-	-	-	-	-	-
China, Guangdong	Prov. Lab/CCDC	0	-	-	-	-	-	-	-	-	-	-	-	-	-	48	48	0	21	0	0	22	0	0	15	0	0	0	0	0
China, Guangxi	Prov. Lab/CCDC	0	-	-	-	-	-	-	-	-	-	-	-	-	-	0	-	-	-	-	-	-	-	-	-	-	-	-	-	-
China, Hebei	Prov. Lab/CCDC	0	-	-	-	-	-	-	-	-	-	-	-	-	-	0	-	-	-	-	-	-	-	-	-	-	-	-	-	-
China, Heilongjiang	Prov. Lab/CCDC	0	-	-	-	-	-	-	-	-	-	-	-	-	-	18	18	0	11	0	0	37	1	0	47	0	0	0	0	0
China, Henan	Prov. Lab/CCDC	0	-	-	-	-	-	-	-	-	-	-	-	-	-	0	-	-	-	-	-	-	-	-	-	-	-	-	-	-
China, Hunan	Prov. Lab/CCDC	0	-	-	-	-	-	-	-	-	-	-	-	-	-	0	-	-	-	-	-	-	-	-	-	-	-	-	-	-
China, Jiangsu	Prov. Lab/CCDC	0	-	-	-	-	-	-	-	-	-	-	-	-	-	0	-	-	-	-	-	-	-	-	-	-	-	-	-	-
China, Jiangxi	Prov. Lab/CCDC	0	-	-	-	-	-	-	-	-	-	-	-	-	-	0	-	-	-	-	-	-	-	-	-	-	-	-	-	-
China, Jilin	Prov. Lab/CCDC	0	-	-	-	-	-	-	-	-	-	-	-	-	-	0	-	-	-	-	-	-	-	-	-	-	-	-	-	-
China, Shaanxi	Prov. Lab/CCDC	0	-	-	-	-	-	-	-	-	-	-	-	-	-	0	-	-	-	-	-	-	-	-	-	-	-	-	-	-
China, Shandong	Prov. Lab/CCDC	0	-	-	-	-	-	-	-	-	-	-	-	-	-	48	48	0	13	0	0	16	0	0	23	0	0	0	0	0
China, Shanghai	Prov. Lab/CCDC	0	-	-	-	-	-	-	-	-	-	-	-	-	-	12	12	0	6	0	0	12	0	0	10	0	0	0	0	0
China, Shanxi	Prov. Lab/CCDC	0	-	-	-	-	-	-	-	-	-	-	-	-	-	0	-	-	-	-	-	-	-	-	-	-	-	-	-	-
China, Sichuan	Prov. Lab/CCDC	0	-	-	-	-	-	-	-	-	-	-	-	-	-	0	-	-	-	-	-	-	-	-	-	-	-	-	-	-
China, Tianjin	Prov. Lab/CCDC	0	-	-	-	-	-	-	-	-	-	-	-	-	-	0	-	-	-	-	-	-	-	-	-	-	-	-	-	-
China, Xinjiang	Prov. Lab/CCDC	0	-	-	-	-	-	-	-	-	-	-	-	-	-	27	27	0	27	0	0	38	1	0	20	0	0	0	0	0
China, Yunnan	Prov. Lab/CCDC	1	1	0	1	0	0	0	0	0	0	0	0	0	0	-	-	-	-	-	-	-	-	-	-	-	-	-	-	-
China, Zhejiang	Prov. Lab/CCDC	0	-	-	-	-	-	-	-	-	-	-	-	-	-	0	-	-	-	-	-	-	-	-	-	-	-	-	-	-
China, Chongqing	CCDC	0	-	-	-	-	-	-	-	-	-	-	-	-	-	0	-	-	-	-	-	-	-	-	-	-	-	-	-	-
China, Guizhou	CCDC	0	-	-	-	-	-	-	-	-	-	-	-	-	-	0	-	-	-	-	-	-	-	-	-	-	-	-	-	-
China, Hainan	CCDC	0	-	-	-	-	-	-	-	-	-	-	-	-	-	0	-	-	-	-	-	-	-	-	-	-	-	-	-	-
China, Hubei	CCDC	0	-	-	-	-	-	-	-	-	-	-	-	-	-	0	-	-	-	-	-	-	-	-	-	-	-	-	-	-
China, Liaoning	CCDC	0	-	-	-	-	-	-	-	-	-	-	-	-	-	0	-	-	-	-	-	-	-	-	-	-	-	-	-	-
China, Neimongol	CCDC	0	-	-	-	-	-	-	-	-	-	-	-	-	-	0	-	-	-	-	-	-	-	-	-	-	-	-	-	-
China, Ningxia	CCDC	0	-	-	-	-	-	-	-	-	-	-	-	-	-	0	-	-	-	-	-	-	-	-	-	-	-	-	-	-
China, Qinghai	CCDC	2	2	0	2	0	0	0	0	0	1	0	0	0	0	-	-	-	-	-	-	-	-	-	-	-	-	-	-	-
China, Tibet	CCDC	0	-	-	-	-	-	-	-	-	-	-	-	-	-	0	-	-	-	-	-	-	-	-	-	-	-	-	-	-
China, Hong Kong SAR	PHLC	0	-	-	-	-	-	-	-	-	-	-	-	-	-	0	-	-	-	-	-	-	-	-	-	-	-	-	-	-
China, Macao SAR	PHLC	0	-	-	-	-	-	-	-	-	-	-	-	-	-	0	-	-	-	-	-	-	-	-	-	-	-	-	-	-
Japan	NIID	0	-	-	-	-	-	-	-	-	-	-	-	-	-	0	-	-	-	-	-	-	-	-	-	-	-	-	-	-
Lao People's Democratic Republic	NIID	0	-	-	-	-	-	-	-	-	-	-	-	-	-	0	-	-	-	-	-	-	-	-	-	-	-	-	-	-
Malaysia	IMR	0	-	-	-	-	-	-	-	-	-	-	-	-	-	21	7	0	1	0	0	1	0	0	5	0	7	0	0	0
Mongolia	NIID	203	0	0	0	0	0	0	0	0	0	0	23	0	0	-	-	-	-	-	-	-	-	-	-	-	-	-	-	-
New Zealand	IESR	0	-	-	-	-	-	-	-	-	-	-	-	-	-	0	-	-	-	-	-	-	-	-	-	-	-	-	-	-
Papua New Guinea	VIDRL	0	-	-	-	-	-	-	-	-	-	-	-	-	-	0	-	-	-	-	-	-	-	-	-	-	-	-	-	-
Philippines	RITM	3	3	0	1	0	0	1	0	0	1	0	0	0	0	-	-	-	-	-	-	-	-	-	-	-	-	-	-	-
Republic of Korea	NIH	0	-	-	-	-	-	-	-	-	-	-	-	-	-	0	-	-	-	-	-	-	-	-	-	-	-	-	-	-
Singapore	SGH	0	-	-	-	-	-	-	-	-	-	-	-	-	-	0	-	-	-	-	-	-	-	-	-	-	-	-	-	-
Viet Nam (North)	NIHE	0	-	-	-	-	-	-	-	-	-	-	-	-	-	0	-	-	-	-	-	-	-	-	-	-	-	-	-	-
Viet Nam (South)	PI	0	-	-	-	-	-	-	-	-	-	-	-	-	-	0	-	-	-	-	-	-	-	-	-	-	-	-	-	-
Pacific island countries and areas	VIDRL	0	-	-	-	-	-	-	-	-	-	-	-	-	-	0	-	-	-	-	-	-	-	-	-	-	-	-	-	-
<b>Total</b>		<b>305</b>	<b>6</b>	<b>0</b>	<b>4</b>	<b>0</b>	<b>0</b>	<b>1</b>	<b>0</b>	<b>0</b>	<b>2</b>	<b>0</b>	<b>23</b>	<b>0</b>	<b>0</b>	<b>191</b>	<b>174</b>	<b>0</b>	<b>80</b>	<b>0</b>	<b>0</b>	<b>130</b>	<b>2</b>	<b>0</b>	<b>120</b>	<b>0</b>	<b>10</b>	<b>0</b>	<b>0</b>	

1. Based on year of collection of sample, if available. Otherwise, based on year of receipt at reference laboratory.

2. CCDC (Chinese Center for Disease Control and Prevention, China); IESR (Institute of Environmental Science and Research, New Zealand); IMR (Institute of Medical Research, Malaysia); NIH (National Institute of Health, Republic of Korea); NIHE (National Institute of Hygiene and Epidemiology, Ha Noi, Viet Nam); NIID (National Institute of Infectious Diseases, Japan); PHI (Public Health Institute, Mongolia); PHLC (Public Health Laboratory Center, China, Hong Kong SAR); PI (Pasteur Institute, Ho Chi Minh, Viet Nam); RITM (Research Institute for Tropical Medicine, Philippines); SGH (Singapore General Hospital); VIDRL (Victorian Infectious Diseases Reference Laboratory, Australia)

Table 3B. Laboratory confirmation of polio isolates from other sources in 2015 <sup>1</sup>

Country	Intratype differentiation lab <sup>2</sup>	Non-AFP cases											Environmental samples																
		Total number of non-AFP cases tested for polio	Total number of non-AFP cases with polio isolates	Type 1			Type 2			Type 3			NPEV	Pending ITD	Discordant pending sequencing	Total number of samples processed	Total number of samples with polio isolates	Type 1			Type 2			Type 3			NPEV	Pending ITD	Discordant pending sequencing
				Wild	Sabin	VDPV	Wild	Sabin	VDPV	Wild	Sabin	VDPV						Wild	Sabin	VDPV	Wild	Sabin	VDPV	Wild	Sabin	VDPV			
Australia	VIDRL	59	0	-	-	-	-	-	-	-	-	1	0	0	20	2	0	0	0	0	1	0	0	1	0	0	15	0	0
Brunei Darussalam	VIDRL	0	-	-	-	-	-	-	-	-	-	-	-	-	0	-	-	-	-	-	-	-	-	-	-	-	-	-	-
Cambodia	NIID	0	-	-	-	-	-	-	-	-	-	-	-	-	0	-	-	-	-	-	-	-	-	-	-	-	-	-	-
China		0	-	-	-	-	-	-	-	-	-	-	-	-	0	-	-	-	-	-	-	-	-	-	-	-	-	-	-
China, Anhui	Prov. Lab/CCDC	0	-	-	-	-	-	-	-	-	-	-	-	-	0	-	-	-	-	-	-	-	-	-	-	-	-	-	-
China, Beijing	Prov. Lab/CCDC	0	-	-	-	-	-	-	-	-	-	-	-	-	0	-	-	-	-	-	-	-	-	-	-	-	-	-	-
China, Fujian	Prov. Lab/CCDC	0	-	-	-	-	-	-	-	-	-	-	-	-	0	-	-	-	-	-	-	-	-	-	-	-	-	-	-
China, Gansu	Prov. Lab/CCDC	0	-	-	-	-	-	-	-	-	-	-	-	-	0	-	-	-	-	-	-	-	-	-	-	-	-	-	-
China, Guangdong	Prov. Lab/CCDC	0	-	-	-	-	-	-	-	-	-	-	-	-	0	-	-	-	-	-	-	-	-	-	-	-	-	-	-
China, Guangxi	Prov. Lab/CCDC	0	-	-	-	-	-	-	-	-	-	-	-	-	0	-	-	-	-	-	-	-	-	-	-	-	-	-	-
China, Hebei	Prov. Lab/CCDC	0	-	-	-	-	-	-	-	-	-	-	-	-	0	-	-	-	-	-	-	-	-	-	-	-	-	-	-
China, Heilongjiang	Prov. Lab/CCDC	0	-	-	-	-	-	-	-	-	-	-	-	-	0	-	-	-	-	-	-	-	-	-	-	-	-	-	-
China, Henan	Prov. Lab/CCDC	0	-	-	-	-	-	-	-	-	-	-	-	-	0	-	-	-	-	-	-	-	-	-	-	-	-	-	-
China, Hunan	Prov. Lab/CCDC	0	-	-	-	-	-	-	-	-	-	-	-	-	0	-	-	-	-	-	-	-	-	-	-	-	-	-	-
China, Jiangsu	Prov. Lab/CCDC	0	-	-	-	-	-	-	-	-	-	-	-	-	0	-	-	-	-	-	-	-	-	-	-	-	-	-	-
China, Jiangxi	Prov. Lab/CCDC	0	-	-	-	-	-	-	-	-	-	-	-	-	0	-	-	-	-	-	-	-	-	-	-	-	-	-	-
China, Jilin	Prov. Lab/CCDC	0	-	-	-	-	-	-	-	-	-	-	-	-	0	-	-	-	-	-	-	-	-	-	-	-	-	-	-
China, Shaanxi	Prov. Lab/CCDC	0	-	-	-	-	-	-	-	-	-	-	-	-	0	-	-	-	-	-	-	-	-	-	-	-	-	-	-
China, Shandong	Prov. Lab/CCDC	0	-	-	-	-	-	-	-	-	-	-	-	-	0	-	-	-	-	-	-	-	-	-	-	-	-	-	-
China, Shanghai	Prov. Lab/CCDC	0	-	-	-	-	-	-	-	-	-	-	-	-	0	-	-	-	-	-	-	-	-	-	-	-	-	-	-
China, Shanxi	Prov. Lab/CCDC	0	-	-	-	-	-	-	-	-	-	-	-	-	0	-	-	-	-	-	-	-	-	-	-	-	-	-	-
China, Sichuan	Prov. Lab/CCDC	0	-	-	-	-	-	-	-	-	-	-	-	-	0	-	-	-	-	-	-	-	-	-	-	-	-	-	-
China, Tianjin	Prov. Lab/CCDC	0	-	-	-	-	-	-	-	-	-	-	-	-	0	-	-	-	-	-	-	-	-	-	-	-	-	-	-
China, Xinjiang	Prov. Lab/CCDC	0	-	-	-	-	-	-	-	-	-	-	-	-	0	-	-	-	-	-	-	-	-	-	-	-	-	-	-
China, Yunan	Prov. Lab/CCDC	0	-	-	-	-	-	-	-	-	-	-	-	-	0	-	-	-	-	-	-	-	-	-	-	-	-	-	-
China, Zhejiang	Prov. Lab/CCDC	0	-	-	-	-	-	-	-	-	-	-	-	-	0	-	-	-	-	-	-	-	-	-	-	-	-	-	-
China, Chongqing	CCDC	0	-	-	-	-	-	-	-	-	-	-	-	-	0	-	-	-	-	-	-	-	-	-	-	-	-	-	-
China, Guizhou	CCDC	0	-	-	-	-	-	-	-	-	-	-	-	-	0	-	-	-	-	-	-	-	-	-	-	-	-	-	-
China, Hainan	CCDC	0	-	-	-	-	-	-	-	-	-	-	-	-	0	-	-	-	-	-	-	-	-	-	-	-	-	-	-
China, Hubei	CCDC	0	-	-	-	-	-	-	-	-	-	-	-	-	0	-	-	-	-	-	-	-	-	-	-	-	-	-	-
China, Liaoning	CCDC	0	-	-	-	-	-	-	-	-	-	-	-	-	0	-	-	-	-	-	-	-	-	-	-	-	-	-	-
China, Neimongol	CCDC	0	-	-	-	-	-	-	-	-	-	-	-	-	0	-	-	-	-	-	-	-	-	-	-	-	-	-	-
China, Ningxia	CCDC	0	-	-	-	-	-	-	-	-	-	-	-	-	0	-	-	-	-	-	-	-	-	-	-	-	-	-	-
China, Qinghai	CCDC	0	-	-	-	-	-	-	-	-	-	-	-	-	0	-	-	-	-	-	-	-	-	-	-	-	-	-	-
China, Tibet	CCDC	0	-	-	-	-	-	-	-	-	-	-	-	-	0	-	-	-	-	-	-	-	-	-	-	-	-	-	-
China, Hong Kong SAR	PHLC	0	-	-	-	-	-	-	-	-	-	-	-	-	0	-	-	-	-	-	-	-	-	-	-	-	-	-	-
China, Macao SAR	PHLC	0	-	-	-	-	-	-	-	-	-	-	-	-	0	-	-	-	-	-	-	-	-	-	-	-	-	-	-
Japan	NIID	0	-	-	-	-	-	-	-	-	-	-	-	-	0	-	-	-	-	-	-	-	-	-	-	-	-	-	-
Lao People's Democratic Republic	NIID	0	-	-	-	-	-	-	-	-	-	-	-	-	0	-	-	-	-	-	-	-	-	-	-	-	-	-	-
Malaysia	IMR	0	-	-	-	-	-	-	-	-	-	-	-	-	0	-	-	-	-	-	-	-	-	-	-	-	-	-	-
Mongolia	NIID	26	0	0	0	0	0	0	0	0	0	2	0	0	0	-	-	-	-	-	-	-	-	-	-	-	-	-	-
New Zealand	IESR	0	-	-	-	-	-	-	-	-	-	-	-	-	0	-	-	-	-	-	-	-	-	-	-	-	-	-	-
Papua New Guinea	VIDRL	0	-	-	-	-	-	-	-	-	-	-	-	-	0	-	-	-	-	-	-	-	-	-	-	-	-	-	-
Philippines	RITM	3	3	0	1	0	0	1	0	0	1	0	0	0	0	-	-	-	-	-	-	-	-	-	-	-	-	-	-
Republic of Korea	NIH	0	-	-	-	-	-	-	-	-	-	-	-	-	0	-	-	-	-	-	-	-	-	-	-	-	-	-	-
Singapore	SGH	0	-	-	-	-	-	-	-	-	-	-	-	-	0	-	-	-	-	-	-	-	-	-	-	-	-	-	-
Viet Nam (North)	NIHE	0	-	-	-	-	-	-	-	-	-	-	-	-	0	-	-	-	-	-	-	-	-	-	-	-	-	-	-
Viet Nam (South)	PI	0	-	-	-	-	-	-	-	-	-	-	-	-	0	-	-	-	-	-	-	-	-	-	-	-	-	-	-
Pacific island countries and areas	VIDRL	0	-	-	-	-	-	-	-	-	-	-	-	-	0	-	-	-	-	-	-	-	-	-	-	-	-	-	-
<b>Total</b>		<b>88</b>	<b>3</b>	<b>0</b>	<b>1</b>	<b>0</b>	<b>0</b>	<b>1</b>	<b>0</b>	<b>0</b>	<b>1</b>	<b>0</b>	<b>3</b>	<b>0</b>	<b>0</b>	<b>20</b>	<b>2</b>	<b>0</b>	<b>0</b>	<b>0</b>	<b>0</b>	<b>1</b>	<b>0</b>	<b>0</b>	<b>1</b>	<b>0</b>	<b>15</b>	<b>0</b>	<b>0</b>

1. Based on year of collection of sample, if available. Otherwise, based on year of receipt at reference laboratory.

2. CCDC (Chinese Center for Disease Control and Prevention, China); IESR (Institute of Environmental Science and Research, New Zealand); IMR (Institute of Medical Research, Malaysia); NIH (National Institute of Health, Republic of Korea); NIHE (National Institute of Hygiene and Epidemiology, Ha Noi, Viet Nam); NIID (National Institute of Infectious Diseases, Japan); PHI (Public Health Institute, Mongolia); PHLC (Public Health Laboratory Center, China, Hong Kong SAR); PI (Pasteur Institute, Ho Chi Minh, Viet Nam); RITM (Research Institute for Tropical Medicine, Philippines); SGH (Singapore General Hospital); VIDRL (Victorian Infectious Diseases Reference Laboratory, Australia)

Table 4. Vaccine-derived poliovirus, 2000–2015

Country	2000–2009 <sup>2</sup>	2010	2011	2012	2013	2014	2015
Cambodia	2006 (1 case) Total (2 cases)						
China	2009 (1 case) Total (27 cases)	aVDPV2 (5 cases) aVDPV3 (2 cases)	aVDPV1 (1 case) aVDPV2 (3 cases) cVDPV2 (2 cases) iVDPV2 (2 cases) iVDPV3 (1 case)	aVDPV1 (1 case) aVDPV2 (2 cases) cVDPV2 (3 cases) iVDPV2 + iVDPV3 (1 case)	aVDPV2 (1 case) iVDPV2 + iVDPV3 (1 case)	aVDPV1 (1 case) aVDPV2 (2 cases) iVDPV3 (1 case)	iVDPV2 (1 case) ?VDPV1 (1 case) ?VDPV2 (1 case)
China, Hong Kong SAR	2005 (3 cases)						
Japan	2005 (1 case) Total (2 cases)						
Lao People's Democratic Republic	2004 (3 cases)						
Mongolia	2003 (1 case)						
Philippines	2001 (3 cases)					aVDPV2 (1 case)	
Viet Nam				aVDPV2 (2 cases)			

1. Prefix letter refers to the VDPV category - "cVDPV" = circulating VDPV, "iVDPV" = immunodeficiency-associated VDPV, "aVDPV" = ambiguous VDPV, "?VDPV" = unknown. Suffix number refers to the poliovirus serotype (types 1, 2 or 3).

2. Refers to year of last VDPV case, and aggregate total of VDPV cases for 2000-2009