

## HIGHLIGHTS

### Technical Advisory Group meeting, Manila, 17-20 June 2014

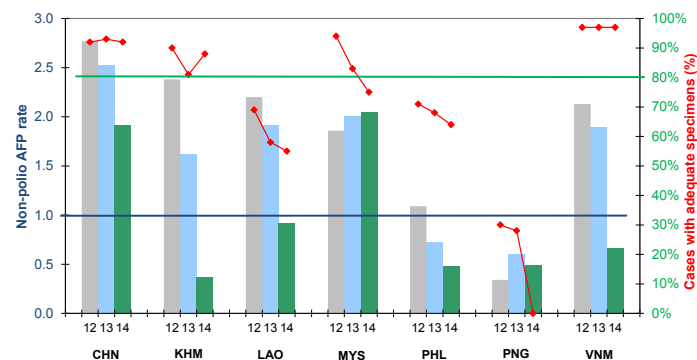
The 23rd meeting of the Technical Advisory Group (TAG) on Immunization and Vaccine-Preventable Diseases in the Western Pacific Region was held in Manila on 17-20 June 2014. The TAG members noted that the Regional Office for the Western Pacific, Expanded Programme on Immunization worked in consultation with WHO country offices and Member States to finalize the Regional Framework for Implementation of the Global Vaccine Action Plan (GVAP), including the goal of maintaining polio-free status, and to submit this framework to the Regional Committee for the Western Pacific for its endorsement. During the 23rd TAG meeting, the draft plan, Polio Endgame in the Western Pacific Region, was noted as a resource to guide and support the implementation of polio endgame activities in the Region. The TAG welcomed the conclusion of the 19th Regional Commission for the Certification (RCC) of Poliomyelitis Eradication regarding the polio-free status of the Region. The TAG acknowledged the progress made at the country and regional level toward implementation of the polio endgame. This includes:

- dissemination of technical information including the November 2013 SAGE recommendations on inactivated polio vaccine (IPV) schedule, revised WHO position paper on polio vaccines, International Health Regulations (IHR) recommendations for travellers coming from polio infected countries, and other important resources;
- multiple advocacy and sensitization events which played a role in the initiation of the polio endgame plans in many countries;
- initiation of funding requirements discussions including results of the UNICEF IPV tender and the GAVI board decision; and
- IPV introduction dates planned for most countries, and registration of IPV nearly complete.

## CONTACT US

Expanded Programme on Immunization  
Regional Office for the Western Pacific  
World Health Organization  
P.O. Box 2932, 1000 Manila, Philippines  
Phone: +63 2 5288001  
Fax: +63 2 5211036, 5260279  
Email: [WPR\\_EPIdata@wpro.who.int](mailto:WPR_EPIdata@wpro.who.int)  
Web: [www.wpro.who.int/immunization](http://www.wpro.who.int/immunization)

Chart 1. Non-polio AFP rate and adequate specimen collection rate, 2012–2014\*



\* AFP rate annualized as of week 25

Chart 3. Polio immunization status of reported AFP cases, 2014

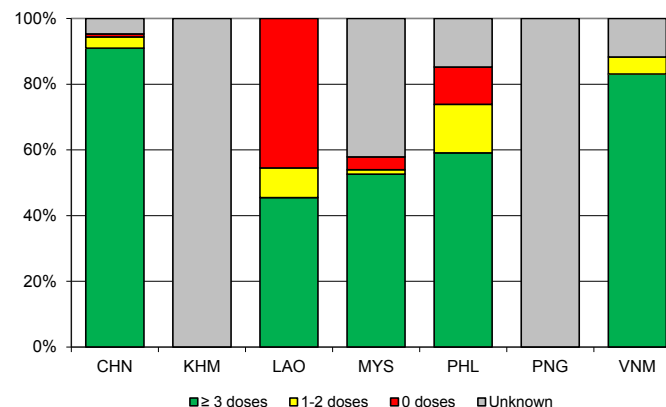


Chart 2. Percent cases with pending classification > 90 days after onset, 2014

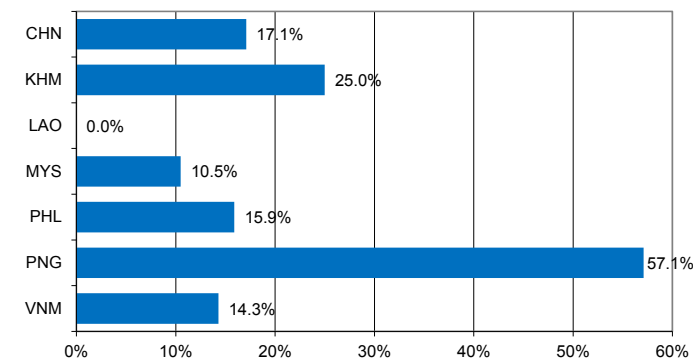
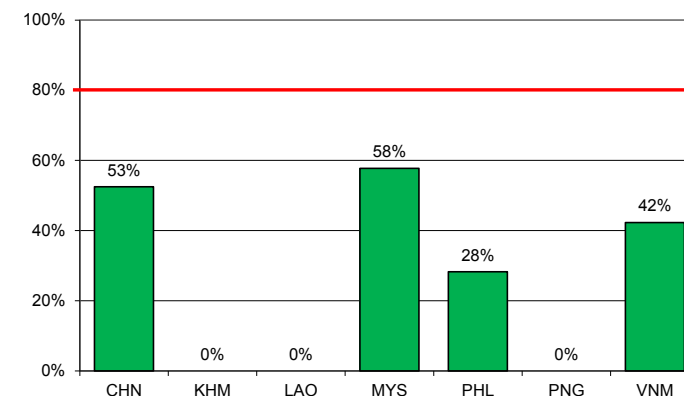


Chart 4. Percentage of samples received at the lab ≤ 3 days of collection, 2014



Note: Priority countries were selected for the charts. Official WHO acronyms have been used for abbreviation: CHN (China), KHM (Cambodia), LAO (Lao People's Democratic Republic), MYS (Malaysia), PHL (Philippines), PNG (Papua New Guinea), and VNM (Viet Nam).

Table 1A. Classification of AFP cases with onset in 2013 and key surveillance indicators

	2012		2013													
	Total reported cases	Annual expected cases <15 years of age	Total reported cases	Classification						Indicators					Latest report date <sup>6</sup>	Days since last report <sup>7</sup>
				Confirmed wild poliovirus	Vaccine-derived poliovirus (VDPV)	Polio-compatible	Discarded (Non-polio)	Pending		Non-polio AFP rate	% with adequate specimens <sup>2</sup>	% with any specimen <sup>3</sup>	% investigated ≤ 2 days of notification <sup>4</sup>	% with 60-day follow-up <sup>5</sup>		
								Total	> 90 days <sup>1</sup> # (%)							
≥ 1	≥ 80%		≥ 80%	≥ 80%												
Australia	56	43	62	0	0	1	61	0	0 (0.0%)	1.44	39%	71%	100%	0%	08-Apr-14	-
Brunei Darussalam	1	1	1	0	0	0	1	0	0 (0.0%)	1.00	100%	100%	100%	-	06-Feb-14	-
Cambodia	107	45	73	0	0	0	73	0	0 (0.0%)	1.62	81%	96%	78%	100%	13-Mar-14	-
China	6173	2225	5623	0	0	1	5622	0	0 (0.0%)	2.53	93%	99%	100%	98%	28-May-14	-
Hong Kong (China)	14	8	12	0	0	0	12	0	0 (0.0%)	1.50	100%	100%	100%	-	06-Feb-14	-
Japan	0	167	0	-	-	-	-	-	-	-	-	-	-	-	-	-
Lao People's Democratic Republic	55	25	48	0	0	0	48	0	0 (0.0%)	1.92	58%	90%	98%	100%	26-May-14	-
Macao (China)	0	1	1	0	0	0	1	0	0 (0.0%)	1.00	100%	100%	100%	-	14-Jan-14	-
Malaysia	141	77	155	0	0	0	155	0	0 (0.0%)	2.01	83%	100%	85%	100%	31-Mar-14	-
Mongolia	9	7	7	0	0	0	7	0	0 (0.0%)	1.00	86%	100%	100%	100%	07-Mar-14	-
New Zealand	8	9	12	0	0	0	12	0	0 (0.0%)	1.33	50%	83%	83%	100%	27-Feb-14	-
Papua New Guinea	10	30	18	0	0	0	18	0	0 (0.0%)	0.60	28%	83%	83%	100%	26-Feb-14	-
Philippines	403	378	277	0	0	2	275	0	0 (0.0%)	0.73	68%	96%	98%	50%	08-Apr-14	-
Republic of Korea	95	76	84	0	0	0	84	0	0 (0.0%)	1.11	93%	100%	94%	100%	20-Mar-14	-
Singapore	10	6	7	0	0	0	7	0	0 (0.0%)	1.17	71%	100%	86%	100%	08-Jan-14	-
Viet Nam	514	241	459	0	0	0	459	0	0 (0.0%)	1.90	97%	99%	92%	100%	17-Apr-14	-
Pacific island countries	4	10	8	0	0	0	7	1	1 (12.5%)	0.80	63%	100%	100%	67%	14-May-14	40
<b>Total</b>	<b>7600</b>	<b>3349</b>	<b>6847</b>	<b>0</b>	<b>0</b>	<b>4</b>	<b>6842</b>	<b>1</b>	<b>1 (0.0%)</b>	<b>2.04</b>	<b>91%</b>	<b>99%</b>	<b>98%</b>	<b>86%</b>		

1. Number (%) of reported cases pending classification more than 90 days from date of onset of paralysis to date of last report
2. Percentage of reported cases with two stool specimens collected 24 hours apart and within 14 days of onset of paralysis
3. Percentage of reported cases with at least one specimen
4. Percentage of reported cases investigated within two days of notification
5. Percentage of reported cases with inadequate specimens followed-up within 60 days of onset of paralysis
6. Report date is fixed as soon as all cases for the year have been classified
7. Countries are expected to submit data at least once per month to WPRO

Green	Reached or surpassed target
Yellow	Nearly reached target: 0.5–0.99 for non-polio AFP rate; 60–79% for other indicators
Red	Substantially below target

Table 1B. Classification of AFP cases with onset in 2014 and key surveillance indicators

	2013		2014													
	Total reported cases	Annual expected cases <15 years of age	Total reported cases	Classification						Indicators					Latest report date	Days since last report <sup>7</sup>
				Confirmed wild poliovirus	Vaccine-derived poliovirus (VDPV)	Polio-compatible	Discarded (Non-polio)	Pending		Non-polio AFP rate <sup>2</sup>	% with adequate specimens <sup>3</sup>	% with any specimen <sup>4</sup>	% investigated ≤ 2 days of notification <sup>5</sup>	% with 60-day follow-up <sup>6</sup>		
								Total	> 90 days <sup>1</sup> # (%)							
≥ 1	≥ 80%		≥ 80%	≥ 80%												
Australia	62	44	19	0	0	0	7	12	2 (10.5%)	0.90	32%	58%	84%	0%	23-May-14	31
Brunei Darussalam	1	1	0	-	-	-	-	-	-	-	-	-	-	-	06-Feb-14	137
Cambodia	73	45	8	0	0	0	0	8	2 (25.0%)	0.37	88%	100%	100%	0%	02-May-14	52
China	5623	2225	2055	0	0	0	833	1222	351 (17.1%)	1.92	92%	98%	100%	71%	19-Jun-14	4
Hong Kong (China)	12	8	8	0	0	0	7	1	1 (12.5%)	2.08	88%	100%	100%	100%	03-Jun-14	20
Japan	0	167	0	-	-	-	-	-	-	-	-	-	-	-	-	-
Lao People's Democratic Republic	48	25	11	0	0	0	5	6	0 (0.0%)	0.92	55%	100%	91%	0%	06-May-14	48
Macao (China)	1	1	1	0	0	0	1	0	0 (0.0%)	2.08	0%	100%	100%	100%	12-Jun-14	11
Malaysia	155	77	76	0	0	0	58	18	8 (10.5%)	2.05	75%	100%	55%	32%	20-Jun-14	3
Mongolia	7	8	3	0	0	0	1	2	0 (0.0%)	0.78	100%	100%	100%	-	09-Jun-14	14
New Zealand	12	9	2	0	0	0	0	2	1 (50.0%)	0.46	50%	100%	100%	0%	16-May-14	38
Papua New Guinea	18	30	7	0	0	0	0	7	4 (57.1%)	0.49	0%	100%	57%	0%	13-Jun-14	10
Philippines	277	378	88	0	0	0	19	69	14 (15.9%)	0.48	64%	93%	95%	3%	12-May-14	42
Republic of Korea	84	76	44	0	0	0	34	10	0 (0.0%)	1.20	82%	100%	95%	88%	19-Jun-14	4
Singapore	7	6	4	0	0	0	4	0	0 (0.0%)	1.39	75%	100%	100%	100%	03-Jun-14	20
Viet Nam	459	241	77	0	0	0	13	64	11 (14.3%)	0.66	97%	100%	88%	0%	26-May-14	28
Pacific island countries	8	10	5	0	0	0	0	5	4 (80.0%)	1.04	40%	60%	60%	0%	16-Jun-14	7
<b>Total</b>	<b>6847</b>	<b>3351</b>	<b>2408</b>	<b>0</b>	<b>0</b>	<b>0</b>	<b>982</b>	<b>1426</b>	<b>398 (16.5%)</b>	<b>1.49</b>	<b>89%</b>	<b>98%</b>	<b>97%</b>	<b>52%</b>		

1. Number (%) of reported cases pending classification more than 90 days from date of onset of paralysis to date of last report
2. Annualized non-polio AFP rate per 100 000 population under 15 years of age
3. Percentage of reported cases with two stool specimens collected 24 hours apart and within 14 days of onset of paralysis
4. Percentage of reported cases with at least one specimen
5. Percentage of reported cases investigated within two days of notification
6. Percentage of reported cases with inadequate specimens followed-up within 60 days of onset of paralysis
7. Countries are expected to submit data at least once per month to WPRO

Green	Reached or surpassed target
Yellow	Nearly reached target: 0.5–0.99 for non-polio AFP rate; 60–79% for other indicators
Red	Substantially below target

Table 2A. Laboratory investigation of AFP cases with onset in 2013 and key laboratory indicators

Country	National polio laboratory <sup>1</sup>	Total no. of AFP cases with specimens	Virus isolation results							% specimens positive for NPEV	Latest report date	Intratyphic differentiation / Sequencing lab <sup>1</sup>	No. of isolates referred	Intratyphic differentiation (ITD) results																			
			L20B positive	L20B positive + NPEV	NPEV only	Negative	Pending ≤ 14 days	Pending > 14 days	% results reported ≤ 14 days <sup>2</sup>					Type 1			Type 2			Type 3			NPEV <sup>3</sup>	Pending ITD	Discordant pending sequencing	% ITD results reported ≤ 7 days of receipt ≥ 80%							
														Wild	Sabin	VDPV	Wild	Sabin	VDPV	Wild	Sabin	VDPV											
Australia	VIDRL	44	0	0	9	35	0	0	100%	20%	29-Jan-14	VIDRL	0	-	-	-	-	-	-	-	-	-	-	-	-	-	-	-	-	-	-	-	
Brunei Darussalam	VIDRL	1	0	0	0	1	0	0	100%	0%	29-Jan-14	VIDRL	0	-	-	-	-	-	-	-	-	-	-	-	-	-	-	-	-	-	-	-	
Papua New Guinea	VIDRL	18	0	0	3	15	0	0	100%	16%	29-Jan-14	VIDRL	0	-	-	-	-	-	-	-	-	-	-	-	-	-	-	-	-	-	-	-	
Pacific island countries	VIDRL	8	0	0	4	4	0	0	100%	44%	29-Jan-14	VIDRL	0	-	-	-	-	-	-	-	-	-	-	-	-	-	-	-	-	-	-	-	
Japan	NIID	0	-	-	-	-	-	-	-	-	-	NIID	0	-	-	-	-	-	-	-	-	-	-	-	-	-	-	-	-	-	-	-	
Cambodia	NIID	70	1	0	21	48	0	0	94%	24%	12-Feb-14	NIID	2	0	0	0	0	2	0	0	0	0	0	0	0	0	0	0	0	0	100%		
Lao People's Democratic Republic	NIID	43	0	0	10	33	0	0	97%	21%	02-Apr-14	NIID	0	-	-	-	-	-	-	-	-	-	-	-	-	-	-	-	-	-	-	-	
Malaysia	IMR	156	0	0	7	149	0	0	98%	3%	25-Feb-14	IMR	0	-	-	-	-	-	-	-	-	-	-	-	-	-	-	-	-	-	-	-	
Mongolia	PHI	7	0	0	1	6	0	0	100%	14%	11-Feb-14	NIID	0	-	-	-	-	-	-	-	-	-	-	-	-	-	-	-	-	-	-	-	
New Zealand	IESR	9	0	0	2	7	0	0	94%	22%	17-Mar-14	IESR	0	-	-	-	-	-	-	-	-	-	-	-	-	-	-	-	-	-	-	-	
Philippines	RITM	366	0	1	40	325	0	0	95%	9%	08-May-14	VIDRL	3	0	1	0	0	1	0	0	0	1	0	0	0	0	0	0	0	0	100%		
Republic of Korea	NIH	83	0	0	2	81	0	0	100%	3%	18-Feb-14	NIID	0	-	-	-	-	-	-	-	-	-	-	-	-	-	-	-	-	-	-	-	
Singapore	SGH	7	1	0	0	6	0	0	100%	0%	15-Jan-14	SGH	2	0	0	0	0	2	0	0	0	0	0	0	0	0	0	0	0	0	100%		
Viet Nam, North	NIHE	229	2	0	41	186	0	0	95%	15%	11-Feb-14	NIID	4	0	0	0	0	2	0	0	0	2	0	0	0	0	0	0	0	0	100%		
Viet Nam, South	PI	225	2	0	21	208	0	0	98%	9%	18-Mar-14	NIID	4	0	2	0	0	0	0	0	0	2	0	0	0	0	0	0	0	0	100%		
China	CCDC	5570	100	3	582	4885	0	0	60%	9%	14-May-14		261	0	71	0	0	95	4	0	77	14	3	0	0	0	0	0	0	0	100%		
China, Anhui	Prov. Lab	268	4	0	35	229	0	0	52%	11%		Prov. Lab	12	0	3	0	0	4	0	0	5	0	0	0	0	0	0	0	0	0	100%		
China, Beijing	Prov. Lab	31	1	0	0	30	0	0	77%	0%		Prov. Lab	15	0	6	0	0	6	0	0	3	0	0	0	0	0	0	0	0	0	0	100%	
China, Fujian	Prov. Lab	161	4	0	16	141	0	0	80%	7%		Prov. Lab	8	0	2	0	0	3	0	0	3	0	0	0	0	0	0	0	0	0	0	100%	
China, Gansu	Prov. Lab	112	4	0	6	102	0	0	73%	5%		Prov. Lab	12	0	1	0	0	6	0	0	5	0	0	0	0	0	0	0	0	0	0	100%	
China, Guangdong	Prov. Lab	377	2	0	37	338	0	0	60%	8%		Prov. Lab	10	0	4	0	0	4	0	0	2	0	0	0	0	0	0	0	0	0	0	100%	
China, Guangxi	Prov. Lab	248	4	0	28	216	0	0	20%	9%		Prov. Lab	13	0	3	0	0	4	0	0	6	0	0	0	0	0	0	0	0	0	0	100%	
China, Hebei	Prov. Lab	387	12	2	62	311	0	0	64%	13%		Prov. Lab	18	0	9	0	0	3	0	0	6	0	0	0	0	0	0	0	0	0	0	100%	
China, Heilongjiang	Prov. Lab	128	3	0	7	118	0	0	79%	5%		Prov. Lab	4	0	1	0	0	0	0	0	3	0	0	0	0	0	0	0	0	0	0	100%	
China, Henan	Prov. Lab	576	13	0	103	460	0	0	55%	14%		Prov. Lab	27	0	6	0	0	14	0	0	7	0	0	0	0	0	0	0	0	0	0	100%	
China, Hunan	Prov. Lab	297	2	0	41	254	0	0	90%	13%		Prov. Lab	4	0	0	0	0	2	0	0	2	0	0	0	0	0	0	0	0	0	0	100%	
China, Jiangsu	Prov. Lab	289	9	0	7	273	0	0	43%	2%		Prov. Lab	11	0	9	0	0	1	0	0	1	0	0	0	0	0	0	0	0	0	0	100%	
China, Jiangxi	Prov. Lab	190	2	0	14	174	0	0	70%	7%		Prov. Lab	31	0	0	0	0	11	4	0	2	14	0	0	0	0	0	0	0	0	0	100%	
China, Jilin	Prov. Lab	64	0	0	3	61	0	0	61%	5%		Prov. Lab	0	-	-	-	-	-	-	-	-	-	-	-	-	-	-	-	-	-	-	-	
China, Shaanxi	Prov. Lab	110	1	0	2	107	0	0	91%	2%		Prov. Lab	0	-	-	-	-	-	-	-	-	-	-	-	-	-	-	-	-	-	-	-	
China, Shandong	Prov. Lab	389	17	0	32	340	0	0	69%	6%		Prov. Lab	31	0	9	0	0	11	0	0	11	0	0	0	0	0	0	0	0	0	0	100%	
China, Shanghai	Prov. Lab	28	2	0	0	26	0	0	98%	0%		Prov. Lab	10	0	4	0	0	6	0	0	0	0	0	0	0	0	0	0	0	0	0	0	100%
China, Shanxi	Prov. Lab	212	3	0	9	200	0	0	42%	4%		Prov. Lab	6	0	2	0	0	2	0	0	2	0	0	2	0	0	0	0	0	0	0	100%	
China, Sichuan	Prov. Lab	357	0	0	39	318	0	0	32%	10%		Prov. Lab	0	-	-	-	-	-	-	-	-	-	-	-	-	-	-	-	-	-	-	-	
China, Tianjin	Prov. Lab	23	1	0	1	21	0	0	87%	4%		Prov. Lab	2	0	0	0	0	2	0	0	0	0	0	0	0	0	0	0	0	0	0	100%	
China, Xinjiang	Prov. Lab	86	5	0	6	75	0	0	81%	6%		Prov. Lab	12	0	2	0	0	7	0	0	3	0	0	0	0	0	0	0	0	0	0	100%	
China, Yunnan	Prov. Lab	255	2	1	30	222	0	0	74%	10%		Prov. Lab	5	0	1	0	0	0	0	0	4	0	0	0	0	0	0	0	0	0	0	100%	
China, Zhejiang	Prov. Lab	163	3	0	19	141	0	0	37%	9%		Prov. Lab	7	0	1	0	0	2	0	0	4	0	1	0	0	0	0	0	0	0	0	100%	
China, Chongqing	Prov. Lab	82	0	0	8	74	0	0	78%	9%		CCDC	0	-	-	-	-	-	-	-	-	-	-	-	-	-	-	-	-	-	-	-	
China, Guizhou	Prov. Lab	232	0	0	23	209	0	0	74%	9%		CCDC	2	0	0	0	0	2	0	0	0	0	0	0	0	0	0	0	0	0	0	100%	
China, Hainan	Prov. Lab	41	0	0	5	36	0	0	71%	11%		CCDC	1	0	0	0	0	0	0	0	1	0	0	0	0	0	0	0	0	0	0	100%	
China, Hubei	Prov. Lab	230	3	0	31	196	0	0	40%	13%		CCDC	6	0	3	0	0	1	0	0	2	0	0	0	0	0	0	0	0	0	0	100%	
China, Liaoning	Prov. Lab	109	0	0	14	95	0	0	72%	11%		CCDC	7	0	3	0	0	2	0	0	2	0	0	0	0	0	0	0	0	0	0	100%	
China, Neimongol	Prov. Lab	80	3	0	3	74	0	0	67%	4%		CCDC	3	0	0	0	0	0	0	0	3	0	0	0	0	0	0	0	0	0	0	100%	
China, Ningxia	Prov. Lab	19	0	0	0	19	0	0	55%	0%		CCDC	4	0	2	0	0	2	0	0	0	0	0	0	0	0	0	0	0	0	0	100%	
China, Qinghai	Prov. Lab	16	0	0	1	15	0	0	63%	3%		CCDC	0	-	-	-	-	3%	-	-	-	-	-	-	-	-	-	-	-	-	-	-	
China, Tibet	Prov. Lab	10	0	0	0	10	0	0	20%	0%		CCDC	0	-	-	-	-	-	-	-	-	-	-	-	-	-	-	-	-	-	-	-	
Hong Kong (China)	PHLC	12	0	0	0	12	0	0	97%	0%	16-Jan-14	PHLC	0	-	-	-	-	-	-	-	-	-	-	-	-	-	-	-	-	-	-	-	
Macao (China)	PHLC	0	-	-	-	-	-	-	-	-	16-Jan-14	PHLC	0	-	-	-	-	-	-	-	-	-	-	-	-	-	-	-	-	-	-	-	-
<b>Total</b>		<b>6848</b>	<b>106</b>	<b>4</b>	<b>743</b>	<b>6001</b>	<b>0</b>	<b>0</b>	<b>65%</b>	<b>9%</b>			<b>276</b>	<b>0</b>	<b>74</b>	<b>0</b>	<b>0</b>	<b>102</b>	<b>4</b>	<b>0</b>	<b>82</b>	<b>14</b>	<b>3</b>	<b>0</b>	<b>0</b>	<b>0</b>	<b>0</b>	<b>0</b>	<b>0</b>	<b>100%</b>			

1. IESR (Institute of Environmental Science and Research, New Zealand); IMR (Institute of Medical Research, Malaysia); NIH (National Institute of Health, Republic of Korea); NIHE (National Institute of Hygiene and Epidemiology, Ha Noi, Viet Nam); NIID (National Institute of Infectious Diseases, Japan); PHI (Public Health Institute, Mongolia); PHLC (Public Health Laboratory Center, Hong Kong); PI (Pasteur Institute, Ho Chi Minh, Viet Nam); RITM (Research Institute for Tropical Medicine, Philippines); SGH (Singapore General Hospital); VIDRL (Victorian Infectious Diseases Reference Laboratory, Australia)  
 2. The target of 14 days for the timeliness of virus isolation will be used for all polio laboratories  
 3. NPEV growing in L20B cells  
 4. Twenty-two provincial laboratories in China perform ITD from 2013

Table 2B. Laboratory investigation of AFP cases with onset in 2014 and key laboratory indicators

Country	National polio laboratory	Total no. of AFP cases with specimens	Virus isolation results							% results reported ≤ 14 days <sup>2</sup>	% specimens positive for NPEV	Latest report date	Intratyptic differentiation / Sequencing lab <sup>1</sup>	No. of isolates referred	Intratyptic differentiation (ITD) results									NPEV <sup>3</sup>	Pending ITD	Discordant pending sequencing	% ITD results reported ≤ 7 days of receipt ≥ 80%				
			L20B positive	L20B positive + NPEV	NPEV only	Negative	Pending ≤ 14 days	Pending > 14 days	Type 1						Type 2			Type 3													
									Wild						Sabin	VDPV	Wild	Sabin	VDPV	Wild	Sabin	VDPV									
Australia	VIDRL	4	0	0	0	4	0	0	88%	0%	14-Mar-14	VIDRL	0	-	-	-	-	-	-	-	-	-	-	-	-	-	-	-	-		
Brunei Darussalam	VIDRL	0	-	-	-	-	-	-	-	-	14-Mar-14	VIDRL	0	-	-	-	-	-	-	-	-	-	-	-	-	-	-	-	-	-	
Papua New Guinea	VIDRL	0	-	-	-	-	-	-	-	-	14-Mar-14	VIDRL	0	-	-	-	-	-	-	-	-	-	-	-	-	-	-	-	-	-	
Pacific island countries	VIDRL	2	0	0	0	1	1	0	100%	0%	14-Mar-14	VIDRL	0	-	-	-	-	-	-	-	-	-	-	-	-	-	-	-	-	-	
Japan	NIID	0	-	-	-	-	-	-	-	-	-	NIID	0	-	-	-	-	-	-	-	-	-	-	-	-	-	-	-	-	-	
Cambodia	NIID	9	3	0	1	5	0	0	100%	6%	27-May-14	NIID	4	0	0	0	0	4	0	0	0	0	0	0	0	0	0	0	0	100%	
Lao People's Democratic Republic	NIID	14	0	0	3	11	0	0	100%	18%	16-Jun-14	NIID	0	-	-	-	-	-	-	-	-	-	-	-	-	-	-	-	-	-	
Malaysia	IMR	81	0	0	2	74	5	0	100%	2%	11-Jun-14	IMR	0	-	-	-	-	-	-	-	-	-	-	-	-	-	-	-	-	-	
Mongolia	PHI	3	0	0	0	2	1	0	100%	0%	05-Jun-14	NIID	0	-	-	-	-	-	-	-	-	-	-	-	-	-	-	-	-	-	
New Zealand	IESR	2	0	0	1	1	0	0	100%	50%	03-Jun-14	IESR	0	-	-	-	-	-	-	-	-	-	-	-	-	-	-	-	-	-	
Philippines	RITM	123	1	0	4	106	0	13	90%	3%	30-May-14	VIDRL	0	-	-	-	-	-	-	-	-	-	-	-	-	-	-	-	-	-	
Republic of Korea	NIH	44	0	0	0	39	5	0	92%	0%	19-Jun-14	NIID	0	-	-	-	-	-	-	-	-	-	-	-	-	-	-	-	-	-	
Singapore	SGH	4	0	0	0	4	0	0	100%	0%	30-May-14	SGH	0	-	-	-	-	-	-	-	-	-	-	-	-	-	-	-	-	-	
Viet Nam, North	NIHE	66	0	0	10	47	8	1	100%	17%	12-Jun-14	NIID	0	-	-	-	-	-	-	-	-	-	-	-	-	-	-	-	-	-	
Viet Nam, South	PI	44	0	0	6	36	2	0	90%	13%	03-Jun-14	NIID	0	-	-	-	-	-	-	-	-	-	-	-	-	-	-	-	-	-	
China	CCDC	2021	41	1	155	1777	2	45	60%	6%	19-Jun-14		117	0	31	0	0	45	2	0	39	0	2	0	0	0	0	0	95%		
China, Anhui	Prov. Lab	82	1	0	0	81	0	0	54%	0%		Prov. Lab	0	-	-	-	-	-	-	-	-	-	-	-	-	-	-	-	-	-	
China, Beijing	Prov. Lab	13	0	0	0	13	0	0	77%	0%		Prov. Lab	5	0	2	0	0	0	0	0	3	0	0	0	0	0	0	0	100%		
China, Fujian	Prov. Lab	84	0	0	11	72	0	1	90%	10%		Prov. Lab	0	-	-	-	-	-	-	-	-	-	-	-	-	-	-	-	-	-	
China, Gansu	Prov. Lab	51	1	0	1	49	0	0	68%	2%		Prov. Lab	6	0	2	0	0	2	0	0	2	0	0	0	0	0	0	0	100%		
China, Guangdong	Prov. Lab	125	1	0	17	107	0	0	74%	10%		Prov. Lab	4	0	2	0	0	2	0	0	0	0	0	0	0	0	0	0	50%		
China, Guangxi	Prov. Lab	84	1	0	17	65	0	1	6%	17%		Prov. Lab	4	0	0	0	0	2	0	0	2	0	0	0	0	0	0	0	100%		
China, Hebei	Prov. Lab	115	2	1	10	101	1	0	54%	7%		Prov. Lab	4	0	2	0	0	2	0	0	0	0	0	0	0	0	0	0	100%		
China, Heilongjiang	Prov. Lab	57	0	0	1	55	0	1	79%	1%		Prov. Lab	0	-	-	-	-	-	-	-	-	-	-	-	-	-	-	-	-	-	
China, Henan	Prov. Lab	194	1	0	19	172	0	2	70%	8%		Prov. Lab	2	0	0	0	0	0	0	0	2	0	0	0	0	0	0	0	100%		
China, Hunan	Prov. Lab	87	1	0	10	72	0	4	80%	11%		Prov. Lab	2	0	2	0	0	0	0	0	0	0	0	0	0	0	0	0	100%		
China, Jiangsu	Prov. Lab	98	10	0	2	85	0	1	35%	2%		Prov. Lab	26	0	6	0	0	14	0	0	6	0	0	0	0	0	0	0	95%		
China, Jiangxi	Prov. Lab	67	0	0	5	54	0	8	84%	7%		Prov. Lab	0	-	-	-	-	-	-	-	-	-	-	-	-	-	-	-	-	-	
China, Jilin	Prov. Lab	21	0	0	0	20	0	1	83%	0%		Prov. Lab	0	-	-	-	-	-	-	-	-	-	-	-	-	-	-	-	-	-	
China, Shaanxi	Prov. Lab	23	0	0	1	21	0	1	66%	5%		Prov. Lab	0	-	-	-	-	-	-	-	-	-	-	-	-	-	-	-	-	-	
China, Shandong	Prov. Lab	158	2	0	6	147	1	2	65%	3%		Prov. Lab	4	0	2	0	0	0	0	0	2	0	0	0	0	0	0	0	100%		
China, Shanghai	Prov. Lab	14	2	0	0	12	0	0	96%	0%		Prov. Lab	6	0	0	0	0	2	0	0	4	0	0	0	0	0	0	0	100%		
China, Shanxi	Prov. Lab	95	3	0	0	86	0	6	42%	0%		Prov. Lab	8	0	0	0	0	4	2	0	2	0	0	0	0	0	0	0	100%		
China, Sichuan	Prov. Lab	135	3	0	13	118	0	1	24%	9%		Prov. Lab	10	0	4	0	0	4	0	0	2	0	0	0	0	0	0	0	100%		
China, Tianjin	Prov. Lab	9	0	0	2	7	0	0	89%	17%		Prov. Lab	0	-	-	-	-	-	-	-	-	-	-	-	-	-	-	-	-	-	
China, Xinjiang	Prov. Lab	32	1	0	1	29	0	1	94%	2%		Prov. Lab	4	0	2	0	0	2	0	0	0	0	0	0	0	0	0	0	100%		
China, Yunnan	Prov. Lab	102	11	0	11	80	0	0	43%	9%		Prov. Lab	24	0	7	0	0	7	0	0	10	0	0	0	0	0	0	0	93%		
China, Zhejiang	Prov. Lab	69	0	0	5	64	0	0	43%	6%		Prov. Lab	0	0	0	0	0	0	0	0	0	0	2	0	0	0	0	100%			
China, Chongqing	Prov. Lab	36	0	0	3	29	0	4	83%	6%		CCDC	2	0	0	0	0	2	0	0	0	0	0	0	0	0	0	100%			
China, Guizhou	Prov. Lab	78	1	0	6	70	0	1	84%	7%		CCDC	4	0	0	0	0	2	0	0	2	0	0	0	0	0	0	100%			
China, Hainan	Prov. Lab	10	0	0	3	7	0	0	70%	25%		CCDC	0	-	-	-	-	-	-	-	-	-	-	-	-	-	-	-	-	-	
China, Hubei	Prov. Lab	69	0	0	9	57	0	3	53%	13%		CCDC	0	-	-	-	-	-	-	-	-	-	-	-	-	-	-	-	-	-	
China, Liaoning	Prov. Lab	51	0	0	1	43	0	7	87%	1%		CCDC	2	0	0	0	0	0	0	0	2	0	0	0	0	0	0	100%			
China, Neimongol	Prov. Lab	40	0	0	1	39	0	0	67%	1%		CCDC	0	-	-	-	-	-	-	-	-	-	-	-	-	-	-	-	-	-	
China, Ningxia	Prov. Lab	17	0	0	0	17	0	0	68%	0%		CCDC	0	-	-	-	-	-	-	-	-	-	-	-	-	-	-	-	-	-	
China, Qinghai	Prov. Lab	4	0	0	0	4	0	0	100%	0%		CCDC	0	-	-	-	-	-	-	-	-	-	-	-	-	-	-	-	-	-	
China, Tibet	Prov. Lab	1	0	0	0	1	0	0	0%	0%		CCDC	0	-	-	-	-	-	-	-	-	-	-	-	-	-	-	-	-	-	
Hong Kong (China)	PHLC	7	0	0	0	7	0	0	95%	0%	28-May-14	PHLC	0	-	-	-	-	-	-	-	-	-	-	-	-	-	-	-	-	-	
Macao (China)	PHLC	0	-	-	-	-	-	-	-	-	28-May-14	PHLC	0	-	-	-	-	-	-	-	-	-	-	-	-	-	-	-	-	-	-
<b>Total</b>		<b>2424</b>	<b>45</b>	<b>1</b>	<b>182</b>	<b>2114</b>	<b>24</b>	<b>59</b>	<b>63%</b>	<b>6%</b>			<b>121</b>	<b>0</b>	<b>31</b>	<b>0</b>	<b>0</b>	<b>49</b>	<b>2</b>	<b>0</b>	<b>39</b>	<b>0</b>	<b>2</b>	<b>0</b>	<b>0</b>	<b>0</b>	<b>0</b>	<b>95%</b>			

1. IESR (Institute of Environmental Science and Research, New Zealand); IMR (Institute of Medical Research, Malaysia); NIH (National Institute of Health, Republic of Korea); NIHE (National Institute of Hygiene and Epidemiology, Ha Noi, Viet Nam); NIID (National Institute of Infectious Diseases, Japan); PHI (Public Health Institute, Mongolia); PHLC (Public Health Laboratory Center, Hong Kong); PI (Pasteur Institute, Ho Chi Minh, Viet Nam); RITM (Research Institute for Tropical Medicine, Philippines); SGH (Singapore General Hospital); VIDRL (Victorian Infectious Diseases Reference Laboratory, Australia)

2. The target of 14 days for the timeliness of virus isolation will be used for all polio laboratories

3. NPEV growing in L20B cells

4. Twenty-two provincial laboratories in China perform ITD from 2013

Table 3A. Laboratory confirmation of polio isolates from other sources in 2013<sup>1</sup>

Country	Intratypic differentiation lab. <sup>2</sup>	Non-AFP cases													Environmental samples																		
		Total number of non-AFP cases tested for polio	Total number of non-AFP cases with polio isolates	Type 1			Type 2			Type 3			NPEV grown in L20B	Pending ITD	Discordant pending sequencing	Total number of samples processed	Total number of samples with polio isolates	Type 1			Type 2			Type 3			NPEV grown in L20B	Pending ITD	Discordant pending sequencing				
				Wild	Sabin	VDPV	Wild	Sabin	VDPV	Wild	Sabin	VDPV						Wild	Sabin	VDPV	Wild	Sabin	VDPV	Wild	Sabin	VDPV				Wild	Sabin	VDPV	
Australia	VIDRL	269	1	0	0	0	0	1	0	0	0	0	0	0	0	0	0	-	-	-	-	-	-	-	-	-	-	-	-	-	-	-	-
Japan	NIID	0	-	-	-	-	-	-	-	-	-	-	-	-	-	-	0	-	-	-	-	-	-	-	-	-	-	-	-	-	-	-	
Malaysia	IMR	0	-	-	-	-	-	-	-	-	-	-	-	-	-	33	4	0	1	0	0	2	0	0	1	0	27	0	0	-	-		
Mongolia	PHI	158	0	0	0	0	0	0	0	0	0	0	56	0	0	0	-	-	-	-	-	-	-	-	-	-	-	-	-	-	-		
New Zealand	IESR	0	-	-	-	-	-	-	-	-	-	-	-	-	-	0	-	-	-	-	-	-	-	-	-	-	-	-	-	-	-		
Philippines	VIDRL	6	6	0	5	0	0	1	0	0	1	0	0	0	0	0	-	-	-	-	-	-	-	-	-	-	-	-	-	-	-		
Republic of Korea	NIID	0	-	-	-	-	-	-	-	-	-	-	-	-	-	0	-	-	-	-	-	-	-	-	-	-	-	-	-	-	-		
Singapore	SGH	0	-	-	-	-	-	-	-	-	-	-	-	-	-	0	-	-	-	-	-	-	-	-	-	-	-	-	-	-	-		
Viet Nam, North	NIID	0	-	-	-	-	-	-	-	-	-	-	-	-	-	0	-	-	-	-	-	-	-	-	-	-	-	-	-	-	-		
Viet Nam, South	NIID	0	-	-	-	-	-	-	-	-	-	-	-	-	-	0	-	-	-	-	-	-	-	-	-	-	-	-	-	-	-		
China (total)		28	28	0	15	0	0	11	1	0	13	0	0	0	0	0	-	-	-	-	-	-	-	-	-	-	-	-	-	-	-		
China, Anhui	Prov. Lab	0	-	-	-	-	-	-	-	-	-	-	-	-	-	0	-	-	-	-	-	-	-	-	-	-	-	-	-	-	-		
China, Beijing	Prov. Lab	0	-	-	-	-	-	-	-	-	-	-	-	-	-	0	-	-	-	-	-	-	-	-	-	-	-	-	-	-	-		
China, Fujian	Prov. Lab	0	-	-	-	-	-	-	-	-	-	-	-	-	-	0	-	-	-	-	-	-	-	-	-	-	-	-	-	-	-		
China, Gansu	Prov. Lab	7	7	0	7	0	0	4	0	0	4	0	0	0	0	0	-	-	-	-	-	-	-	-	-	-	-	-	-	-	-		
China, Guangdong	Prov. Lab	1	1	0	0	0	0	0	1	0	0	0	0	0	0	0	-	-	-	-	-	-	-	-	-	-	-	-	-	-	-		
China, Guangxi	Prov. Lab	0	-	-	-	-	-	-	-	-	-	-	-	-	-	0	-	-	-	-	-	-	-	-	-	-	-	-	-	-	-		
China, Hebei	Prov. Lab	2	2	0	2	0	0	0	0	0	0	0	0	0	0	0	-	-	-	-	-	-	-	-	-	-	-	-	-	-	-		
China, Heilongjiang	Prov. Lab	2	2	0	0	0	0	0	0	0	2	0	0	0	0	0	-	-	-	-	-	-	-	-	-	-	-	-	-	-	-		
China, Henan	Prov. Lab	0	-	-	-	-	-	-	-	-	-	-	-	-	-	0	-	-	-	-	-	-	-	-	-	-	-	-	-	-	-		
China, Hunan	Prov. Lab	0	-	-	-	-	-	-	-	-	-	-	-	-	-	0	-	-	-	-	-	-	-	-	-	-	-	-	-	-	-		
China, Jiangsu	Prov. Lab	0	-	-	-	-	-	-	-	-	-	-	-	-	-	0	-	-	-	-	-	-	-	-	-	-	-	-	-	-	-		
China, Jiangxi	Prov. Lab	2	2	0	0	0	0	1	0	0	1	0	0	0	0	0	-	-	-	-	-	-	-	-	-	-	-	-	-	-	-		
China, Jilin	Prov. Lab	0	-	-	-	-	-	-	-	-	-	-	-	-	-	0	-	-	-	-	-	-	-	-	-	-	-	-	-	-	-		
China, Shaanxi	Prov. Lab	0	-	-	-	-	-	-	-	-	-	-	-	-	-	0	-	-	-	-	-	-	-	-	-	-	-	-	-	-	-		
China, Shandong	Prov. Lab	2	2	0	2	0	0	1	0	0	1	0	0	0	0	0	-	-	-	-	-	-	-	-	-	-	-	-	-	-	-		
China, Shanghai	Prov. Lab	2	2	0	1	0	0	0	0	0	1	0	0	0	0	0	-	-	-	-	-	-	-	-	-	-	-	-	-	-	-		
China, Shanxi	Prov. Lab	0	-	-	-	-	-	-	-	-	-	-	-	-	-	0	-	-	-	-	-	-	-	-	-	-	-	-	-	-	-		
China, Sichuan	Prov. Lab	2	2	0	1	0	0	0	0	0	1	0	0	0	0	0	-	-	-	-	-	-	-	-	-	-	-	-	-	-	-		
China, Tianjin	Prov. Lab	1	1	0	1	0	0	0	0	0	1	0	0	0	0	0	-	-	-	-	-	-	-	-	-	-	-	-	-	-	-		
China, Xinjiang	Prov. Lab	2	2	0	0	0	0	2	0	0	0	0	0	0	0	0	-	-	-	-	-	-	-	-	-	-	-	-	-	-	-		
China, Yunnan	Prov. Lab	0	-	-	-	-	-	-	-	-	-	-	-	-	-	0	-	-	-	-	-	-	-	-	-	-	-	-	-	-	-		
China, Zhejiang	Prov. Lab	0	-	-	-	-	-	-	-	-	-	-	-	-	-	0	-	-	-	-	-	-	-	-	-	-	-	-	-	-	-		
China, Chongqing	CCDC	0	-	-	-	-	-	-	-	-	-	-	-	-	-	0	-	-	-	-	-	-	-	-	-	-	-	-	-	-	-		
China, Guizhou	CCDC	0	-	-	-	-	-	-	-	-	-	-	-	-	-	0	-	-	-	-	-	-	-	-	-	-	-	-	-	-	-		
China, Hainan	CCDC	1	1	0	0	0	0	1	0	0	0	0	0	0	0	0	-	-	-	-	-	-	-	-	-	-	-	-	-	-	-		
China, Hubei	CCDC	0	-	-	-	-	-	-	-	-	-	-	-	-	-	0	-	-	-	-	-	-	-	-	-	-	-	-	-	-	-		
China, Liaoning	CCDC	0	-	-	-	-	-	-	-	-	-	-	-	-	-	0	-	-	-	-	-	-	-	-	-	-	-	-	-	-	-		
China, Neimongol	CCDC	3	3	0	0	0	0	1	0	0	2	0	0	0	0	0	-	-	-	-	-	-	-	-	-	-	-	-	-	-	-		
China, Ningxia	CCDC	1	1	0	1	0	0	1	0	0	0	0	0	0	0	0	-	-	-	-	-	-	-	-	-	-	-	-	-	-	-		
China, Qinghai	CCDC	0	-	-	-	-	-	-	-	-	-	-	-	-	-	0	-	-	-	-	-	-	-	-	-	-	-	-	-	-	-		
China, Tibet	CCDC	0	-	-	-	-	-	-	-	-	-	-	-	-	-	0	-	-	-	-	-	-	-	-	-	-	-	-	-	-	-		
Hong Kong (China)	PHLC	1	1	0	1	0	0	0	0	0	0	0	0	0	0	0	-	-	-	-	-	-	-	-	-	-	-	-	-	-	-		
<b>Total</b>		<b>462</b>	<b>36</b>	<b>0</b>	<b>21</b>	<b>0</b>	<b>0</b>	<b>13</b>	<b>1</b>	<b>0</b>	<b>14</b>	<b>0</b>	<b>56</b>	<b>0</b>	<b>0</b>	<b>33</b>	<b>4</b>	<b>0</b>	<b>1</b>	<b>0</b>	<b>0</b>	<b>2</b>	<b>0</b>	<b>0</b>	<b>1</b>	<b>0</b>	<b>27</b>	<b>0</b>	<b>0</b>	<b>0</b>			

1. Based on year of collection of sample, if available. Otherwise, based on year of receipt at reference laboratory.

2. CCDC (Chinese Center for Disease Control and Prevention, China); IESR (Institute of Environmental Science and Research, New Zealand); IMR (Institute of Medical Research, Malaysia); NIID (National Institute of Infectious Diseases, Japan); PHI (Public Health Institute, Mongolia); PHLC (Public Health Laboratory Center, Hong Kong); SGH (Singapore General Hospital); VIDRL (Victorian Infectious Diseases Reference Laboratory, Australia)

Table 3B. Laboratory confirmation of polio isolates from other sources in 2014 <sup>1</sup>

Country	Intratyptic differentiation lab. <sup>2</sup>	Non-AFP cases													Environmental samples																						
		Total number of non-AFP cases tested for polio	Total number of non-AFP cases with polio isolates	Type 1			Type 2			Type 3			NPEV grown in L20B	Pending ITD	Discordant pending sequencing	Total number of samples processed	Total number of samples with polio isolates	Type 1			Type 2			Type 3			NPEV grown in L20B	Pending ITD	Discordant pending sequencing								
				Wild	Sabin	VDPV	Wild	Sabin	VDPV	Wild	Sabin	VDPV						Wild	Sabin	VDPV	Wild	Sabin	VDPV	Wild	Sabin	VDPV											
Australia	VIDRL	10	0	0	0	0	0	0	0	0	0	0	0	0	0	0	-	-	-	-	-	-	-	-	-	-	-	-	-	-	-	-	-	-	-	-	-
Japan	NIID	0	-	-	-	-	-	-	-	-	-	-	-	-	-	-	0	-	-	-	-	-	-	-	-	-	-	-	-	-	-	-	-	-	-	-	
Malaysia	IMR	0	-	-	-	-	-	-	-	-	-	-	-	-	-	0	-	-	-	-	-	-	-	-	-	-	-	-	-	-	-	-	-	-	-	-	
Mongolia	PHI	70	0	0	0	0	0	0	0	0	0	0	6	0	0	0	-	-	-	-	-	-	-	-	-	-	-	-	-	-	-	-	-	-	-	-	
New Zealand	IESR	0	-	-	-	-	-	-	-	-	-	-	-	-	-	0	-	-	-	-	-	-	-	-	-	-	-	-	-	-	-	-	-	-	-	-	
Philippines	VIDRL	0	-	-	-	-	-	-	-	-	-	-	-	-	-	0	-	-	-	-	-	-	-	-	-	-	-	-	-	-	-	-	-	-	-	-	
Republic of Korea	NIID	0	-	-	-	-	-	-	-	-	-	-	-	-	-	0	-	-	-	-	-	-	-	-	-	-	-	-	-	-	-	-	-	-	-	-	
Singapore	SGH	0	-	-	-	-	-	-	-	-	-	-	-	-	-	0	-	-	-	-	-	-	-	-	-	-	-	-	-	-	-	-	-	-	-	-	
Viet Nam, North	NIID	0	-	-	-	-	-	-	-	-	-	-	-	-	-	0	-	-	-	-	-	-	-	-	-	-	-	-	-	-	-	-	-	-	-	-	
Viet Nam, South	NIID	1	0	0	0	0	0	0	0	0	0	0	0	0	0	0	-	-	-	-	-	-	-	-	-	-	-	-	-	-	-	-	-	-	-	-	
China (total)		1	1	0	1	0	0	0	0	0	0	0	0	0	0	0	-	-	-	-	-	-	-	-	-	-	-	-	-	-	-	-	-	-	-	-	
China, Anhui	Prov. Lab	0	-	-	-	-	-	-	-	-	-	-	-	-	-	0	-	-	-	-	-	-	-	-	-	-	-	-	-	-	-	-	-	-	-	-	
China, Beijing	Prov. Lab	0	-	-	-	-	-	-	-	-	-	-	-	-	-	0	-	-	-	-	-	-	-	-	-	-	-	-	-	-	-	-	-	-	-	-	
China, Fujian	Prov. Lab	0	-	-	-	-	-	-	-	-	-	-	-	-	-	0	-	-	-	-	-	-	-	-	-	-	-	-	-	-	-	-	-	-	-	-	
China, Gansu	Prov. Lab	0	-	-	-	-	-	-	-	-	-	-	-	-	-	0	-	-	-	-	-	-	-	-	-	-	-	-	-	-	-	-	-	-	-	-	
China, Guangdong	Prov. Lab	0	-	-	-	-	-	-	-	-	-	-	-	-	-	0	-	-	-	-	-	-	-	-	-	-	-	-	-	-	-	-	-	-	-	-	
China, Guangxi	Prov. Lab	0	-	-	-	-	-	-	-	-	-	-	-	-	-	0	-	-	-	-	-	-	-	-	-	-	-	-	-	-	-	-	-	-	-	-	
China, Hebei	Prov. Lab	0	-	-	-	-	-	-	-	-	-	-	-	-	-	0	-	-	-	-	-	-	-	-	-	-	-	-	-	-	-	-	-	-	-	-	
China, Heilongjiang	Prov. Lab	0	-	-	-	-	-	-	-	-	-	-	-	-	-	0	-	-	-	-	-	-	-	-	-	-	-	-	-	-	-	-	-	-	-	-	
China, Henan	Prov. Lab	0	-	-	-	-	-	-	-	-	-	-	-	-	-	0	-	-	-	-	-	-	-	-	-	-	-	-	-	-	-	-	-	-	-	-	
China, Hunan	Prov. Lab	0	-	-	-	-	-	-	-	-	-	-	-	-	-	0	-	-	-	-	-	-	-	-	-	-	-	-	-	-	-	-	-	-	-	-	
China, Jiangsu	Prov. Lab	0	-	-	-	-	-	-	-	-	-	-	-	-	-	0	-	-	-	-	-	-	-	-	-	-	-	-	-	-	-	-	-	-	-	-	
China, Jiangxi	Prov. Lab	0	-	-	-	-	-	-	-	-	-	-	-	-	-	0	-	-	-	-	-	-	-	-	-	-	-	-	-	-	-	-	-	-	-	-	
China, Jilin	Prov. Lab	0	-	-	-	-	-	-	-	-	-	-	-	-	-	0	-	-	-	-	-	-	-	-	-	-	-	-	-	-	-	-	-	-	-	-	
China, Shaanxi	Prov. Lab	0	-	-	-	-	-	-	-	-	-	-	-	-	-	0	-	-	-	-	-	-	-	-	-	-	-	-	-	-	-	-	-	-	-	-	
China, Shandong	Prov. Lab	0	-	-	-	-	-	-	-	-	-	-	-	-	-	0	-	-	-	-	-	-	-	-	-	-	-	-	-	-	-	-	-	-	-	-	
China, Shanghai	Prov. Lab	0	-	-	-	-	-	-	-	-	-	-	-	-	-	0	-	-	-	-	-	-	-	-	-	-	-	-	-	-	-	-	-	-	-	-	
China, Shanxi	Prov. Lab	0	-	-	-	-	-	-	-	-	-	-	-	-	-	0	-	-	-	-	-	-	-	-	-	-	-	-	-	-	-	-	-	-	-	-	
China, Sichuan	Prov. Lab	0	-	-	-	-	-	-	-	-	-	-	-	-	-	0	-	-	-	-	-	-	-	-	-	-	-	-	-	-	-	-	-	-	-	-	
China, Tianjin	Prov. Lab	0	-	-	-	-	-	-	-	-	-	-	-	-	-	0	-	-	-	-	-	-	-	-	-	-	-	-	-	-	-	-	-	-	-	-	
China, Xinjiang	Prov. Lab	0	-	-	-	-	-	-	-	-	-	-	-	-	-	0	-	-	-	-	-	-	-	-	-	-	-	-	-	-	-	-	-	-	-	-	
China, Yunnan	Prov. Lab	1	1	0	1	0	0	0	0	0	0	0	0	0	0	0	-	-	-	-	-	-	-	-	-	-	-	-	-	-	-	-	-	-	-	-	
China, Zhejiang	Prov. Lab	0	-	-	-	-	-	-	-	-	-	-	-	-	-	0	-	-	-	-	-	-	-	-	-	-	-	-	-	-	-	-	-	-	-	-	-
China, Chongqing	CCDC	0	-	-	-	-	-	-	-	-	-	-	-	-	-	0	-	-	-	-	-	-	-	-	-	-	-	-	-	-	-	-	-	-	-	-	
China, Guizhou	CCDC	0	-	-	-	-	-	-	-	-	-	-	-	-	-	0	-	-	-	-	-	-	-	-	-	-	-	-	-	-	-	-	-	-	-	-	
China, Hainan	CCDC	0	-	-	-	-	-	-	-	-	-	-	-	-	-	0	-	-	-	-	-	-	-	-	-	-	-	-	-	-	-	-	-	-	-	-	
China, Hubei	CCDC	0	-	-	-	-	-	-	-	-	-	-	-	-	-	0	-	-	-	-	-	-	-	-	-	-	-	-	-	-	-	-	-	-	-	-	
China, Liaoning	CCDC	0	-	-	-	-	-	-	-	-	-	-	-	-	-	0	-	-	-	-	-	-	-	-	-	-	-	-	-	-	-	-	-	-	-	-	
China, Neimongol	CCDC	0	-	-	-	-	-	-	-	-	-	-	-	-	-	0	-	-	-	-	-	-	-	-	-	-	-	-	-	-	-	-	-	-	-	-	
China, Ningxia	CCDC	0	-	-	-	-	-	-	-	-	-	-	-	-	-	0	-	-	-	-	-	-	-	-	-	-	-	-	-	-	-	-	-	-	-	-	
China, Qinghai	CCDC	0	-	-	-	-	-	-	-	-	-	-	-	-	-	0	-	-	-	-	-	-	-	-	-	-	-	-	-	-	-	-	-	-	-	-	
China, Tibet	CCDC	0	-	-	-	-	-	-	-	-	-	-	-	-	-	0	-	-	-	-	-	-	-	-	-	-	-	-	-	-	-	-	-	-	-	-	
Hong Kong (China)	PHLC	0	-	-	-	-	-	-	-	-	-	-	-	-	-	0	-	-	-	-	-	-	-	-	-	-	-	-	-	-	-	-	-	-	-	-	
<b>Total</b>		<b>82</b>	<b>1</b>	<b>0</b>	<b>1</b>	<b>0</b>	<b>0</b>	<b>0</b>	<b>0</b>	<b>0</b>	<b>0</b>	<b>0</b>	<b>6</b>	<b>0</b>	<b>0</b>	<b>0</b>	<b>0</b>	<b>0</b>	<b>0</b>	<b>0</b>	<b>0</b>	<b>0</b>	<b>0</b>	<b>0</b>	<b>0</b>	<b>0</b>	<b>0</b>	<b>0</b>	<b>0</b>	<b>0</b>	<b>0</b>	<b>0</b>	<b>0</b>	<b>0</b>	<b>0</b>		

1. Based on year of collection of sample, if available. Otherwise, based on year of receipt at reference laboratory.

2. CCDC (Chinese Center for Disease Control and Prevention, China); IESR (Institute of Environmental Science and Research, New Zealand); IMR (Institute of Medical Research, Malaysia); NIID (National Institute of Infectious Diseases, Japan); PHI (Public Health Institute, Mongolia); PHLC (Public Health Laboratory Center, Hong Kong); SGH (Singapore General Hospital); VIDRL (Victorian Infectious Diseases Reference Laboratory, Australia)

Table 4. Vaccine-derived poliovirus, 2000–2013

Country	2000	2001	2002	2003	2004	2005	2006	2007	2008	2009	2010	2011	2012	2013
Cambodia						cVDPV3 (1 case)	cVDPV3 (1 case)							
China	aVDPV1 (1 case)	iVDPV1 (1 case) aVDPV3 (1 case)	aVDPV1 (1 case) aVDPV3 (1 case)		cVDPV1 (2 cases) ?VDPV1 (4 cases) ?VDPV2 (1 case)	iVDPV2 (1 case)	aVDPV1 (1 case) ?VDPV1 (7 cases) VDPV3 (1 case)	aVDPV1 (3 cases) ?VDPV1 (1 case)		aVDPV2 (1 case)	aVDPV2 (5 cases) aVDPV3 (2 cases)	aVDPV1 (1 case) aVDPV2 (3 cases) cVDPV2 (2 cases) iVDPV2 (2 cases) iVDPV3 (1 case)	aVDPV1 (1 case) aVDPV2 (2 cases) cVDPV2 (3 cases) iVDPV2 + iVDPV3 (1 case)	aVDPV2 (1 case) iVDPV2 + iVDPV3 (1 case)
Hong Kong (China)						?VDPV? (3 cases)								
Japan					?VDPV? (1 case)	?VDPV3 (1 case)								
Lao People's Democratic Republic					aVDPV2 (1 case) ?VDPV? (2 cases)									
Mongolia				?VDPV? (1 case)										
Philippines		cVDPV1 (3 cases)												
Viet Nam													aVDPV2 (2 cases)	