

WORLD HEALTH  
ORGANIZATION



ORGANISATION MONDIALE  
DE LA SANTÉ

SOUTH-EAST ASIA REGION

SOUTH-EAST ASIA ADVISORY COMMITTEE  
ON MEDICAL RESEARCH

SEA/ACMR/12/Infm..Doc. 9

27 March 1986

Twelfth Session, WHO/SEARO, New Delhi  
14 - 18 April 1986

WHO SPECIAL PROGRAMME OF RESEARCH, DEVELOPMENT,  
AND RESEARCH TRAINING IN HUMAN REPRODUCTION

COLLABORATION IN THE SOUTH EAST ASIA REGION IN 1985

WHO SPECIAL PROGRAMME OF RESEARCH, DEVELOPMENT,  
AND RESEARCH TRAINING IN HUMAN REPRODUCTION

COLLABORATION IN THE SOUTH EAST ASIA REGION IN 1985

February 1986

WHO Special Programme of Research, Development  
and Research Training in Human Reproduction

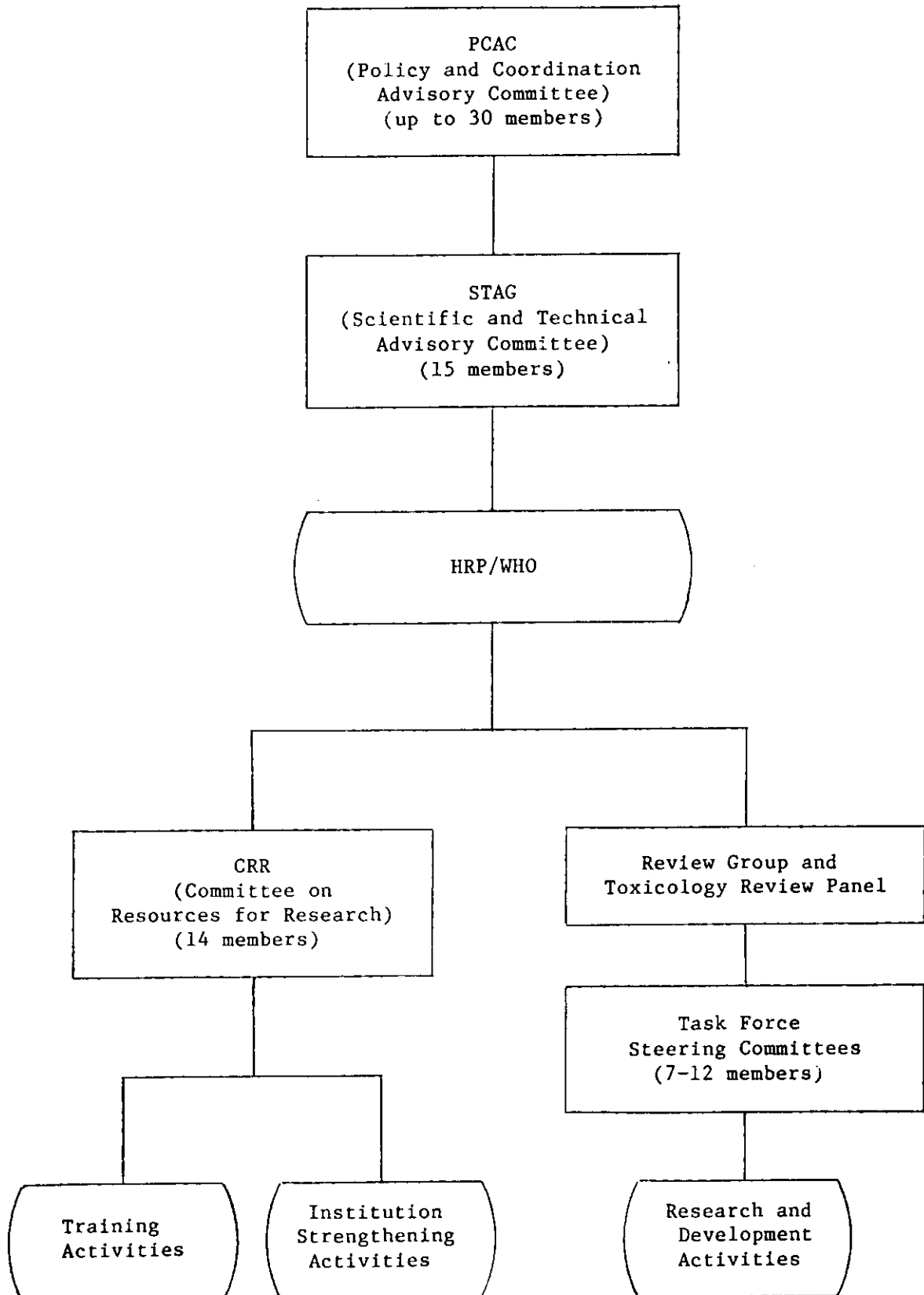
The Special Programme of Research Development and Research Training in Human Reproduction was established in 1972 as the main instrument within WHO for the promotion coordination and support of international research and development of technology relating to human reproduction and family planning. Since 1972 several new methods of fertility regulation have been developed or improved, studies have been completed on the safety of methods in use and under development, service research projects have been completed and extended, and a number of research institutions in developing countries have been strengthened. The scope of the programme has been augmented by the addition of a major programme element on infertility, related particularly to developing countries, and by a significant growth in the study of the safety and efficacy of family planning methods in wide use.

The objectives of the Programme may be summarized as follows:

to promote, support and coordinate international research in human reproduction and family planning of special relevance to developing countries by developing improved methods of fertility control for men and women that are safe cost effective and acceptable as well as other technology for the treatment of infertility that can be delivered through family planning and general health services as part of primary health care;

to promote and support national self-reliance in family planning research in developing countries through institutional development and research training.

Structure of the Programme



## MAJOR FUNCTIONS OF THE VARIOUS BODIES

### Policy and Coordination Advisory Committee (PCAC)

To act as an advisory body to the Director-General of WHO, making recommendations on matters related to the policies, strategies, financing, overall organization, management and impact of the WHO Special Programme of Research, Development and Research Training in Human Reproduction.

### Scientific and Technical Advisory Group (STAG)

To act as an advisory body on scientific and technical matters to the Director-General and the PCAC.

### Committee on Resources for Research (CRR)

To recommend strategy for institution strengthening, including research training. To review annual reports and the proposed programmes and budgets of the Collaborating Centres for Research in Human Reproduction.

### Review Group (RG) and Toxicology Panel (TP)

RG: To provide technical assessment of project proposals.

TP: To review proposals for toxicology testing and to give general guidance on toxicology testing.

### Task Force Steering Committees

To formulate detailed strategy for the task force; to identify scientists to carry out the research; to monitor and assess progress of projects; and to assist in the analysis of results.

BREAKDOWN OF FUNDING PROVIDED BY THE PROGRAMME

Since 1972 and until the end of 1985, the Programme has awarded contracts and grants for some US \$115 million, broken down by WHO regions as follows:

HRP funding for Research and Development and  
Institution Strengthening activities by WHO Region, 1972-1985

(in US \$1000s and %)

Region	US \$ (1000s)	% of total
AFR	7,202	6.3
AMR	30,378	26.6
EMR	4,317	3.8
EUR	30,879	27.1
SEAR	17,045	14.9
WPR	24,353	21.3
Total	114,174	100.0

SPECIAL PROGRAMME OF RESEARCH IN HUMAN REPRODUCTION

Funding for Research and Development and Institution Strengthening  
in the South East Asia Region (cumulative 1972-85 and 1985)  
(US \$ thousands)

COUNTRY	Funding to R & D and institution strengthening		
	1972-85	1985	
		Research and Development	Institution Strengthening
BANGLADESH	343	-	12
INDIA	9,912	368	46
INDONESIA	724	45	206
MONGOLIA	17	-	2
NEPAL	40	-	-
SRI LANKA	1,082	62	-
THAILAND	4,927	354	61
TOTAL SEARO	17,045	829	327

FUNDING TO RESEARCH AND DEVELOPMENT PROJECTS  
IN THE SOUTH EAST ASIA REGION

Some of the R and D projects are funded under individual TS agreements covering a single project, others are funded under "core support" TS agreements which cover several research projects. The latter projects are identified by the letter "c" in the following listing.

Projects funded in previous years, but which are still ongoing, are identified by a dash (-).



SPECIAL PROGRAMME OF RESEARCH IN HUMAN REPRODUCTION

Research and Development Projects funded/ongoing in 1985  
in the South East Asia Region

Principal Investigator and Institute	Title	Amount in 1985 US \$
<u>Bangladesh</u>		
DATTA, S.C. Bangladesh Fertility Research Programme Dhaka	Selected factors influencing attitudes towards vasectomy in rural Bangladesh (83035)	-
GAFUR, M.A. Bangladesh Council of Scientific and Industrial Research Dhaka	Evaluation and elucidation of fertility regulation potency of a selected number of indigenous medicinal plants (82031)	-
<u>India</u>		
MOUDGAL, N.R. Indian Institute of Science Bangalore	Investigation of anti- implantation activity of tamoxifen in bonnet monkeys (85012)	8 033
	Reversibility of suppression of spermatogenesis by LHRH agonists + testosterone treatment in non-human primates (85011)	20 987
<u>Injectables</u>		
WHO Collaborating Centre for Research in Human Reproduction Institute for Research in Reproduction Bombay	Pharmacokinetic and pharmaco- dynamic study of levonorgestrel administered in large doses as a post-coital contraceptive (82912)	c
<u>IUD Studies</u>		
WHO Collaborating Centre for Research in Human Reproduction Postgraduate Institute of Medical Education and Research <sup>1)</sup> Chandigarh	Comparative study of the Cu T 220C and Cu T 380A in multiparous women (79914)	c
	A randomized comparative study of interval insertion of three IUDs: Copper T 220 C, Nova T and WHO Levonorgestrel 2ug (82901)	c

1) Total 1985 funding for "core support" projects: \$69,500.

Principal Investigator and Institute	Title	Amount in 1985 US \$
	<u>Prostaglandins</u>	
	A study of sulprostone in patients with a delay in the onset of menstruation of up to 7 days (83909)	c
	Randomized comparison of prostaglandins three E analogues: methyl PGF <sub>2</sub> Alpha methylester, sulprostone, ONO 802, 9 methylene PGE <sub>2</sub> and laminaria tent for cervical dilation (80923)	c
	<u>Infertility</u>	
	Diagnosis and management of the infertile couple (78923)	c
	Simplified management of the infertile couple (84914)	c
	An evaluation of the predictive value of the post-coital test (78178)	-
	ATP in semen: Its significance for the management of male patients with infertility (83902)	c
	The treatment of oligospermia with clomiphene citrate -- a double blind trial (80922)	c
	Follow-up of infertile couples to find out the number of subjects (rural/urban) interested in further investigations (79920)	c
	<u>Vaginal rings</u>	
	Two-year safety and efficacy of WHO levonorgestrel vaginal rings (84909)	c
MEHROTRA, P.K. Central Drug Research Institute Lucknow	Factors promoting growth and differentiation of trophoblast cells in guinea pigs during implantation (83038)	11 500
POPLI, S.P. Central Drug Research Institute Lucknow	A six-centre collaborative approach for the isolation of fertility regulating compounds from plants (77918)	31 500

Principal Investigator and Institute	Title	Amount in 1985 US \$
WHO Collaborating Centre for Research in Human Reproduction All-India Institute of Medical Sciences <sup>1)</sup> New Delhi	<u>Vaginal rings</u>	
	Longer term use of vaginal rings: levonorgestrel 20 ug (79931)	c
	Two-year safety and efficacy study of WHO levonorgestrel rings (84909)	c
	<u>Prostaglandins</u>	
	Randomized comparison of vaginal administration of 9-deoxo-16, 16-dimethyl-9- methylene PGE <sub>2</sub> , intramuscular injection of 16-phenoxy-w-17, 18, 19, 20-tetranor PGE <sub>2</sub> methyl sulfonamide, and vacuum aspiration for menstrual regulation in patients with a delay of menstruation of up to 14 days (81918)	c
	Comparative study of prostaglandin treatment in patients with a delay of menstruation of up to 7 days (83909)	c
	<u>Infertility</u>	
	Diagnosis and management of the infertile couple (78923)	c
	Treatment of oligospermia with clomiphene citrate - a double blind trial (80922)	c
	<u>Post-ovulatory</u>	
The efficacy of the oral post- coital administration of levonorgestrel in the peri- ovulatory phase of the menstrual cycle (82906)	c	
SENGUPTA, JAYASREE All India Institute of Medical Sciences New Delhi	Estradiol receptors in monkey endometrium during early pregnancy (83037)	29 000

1) Total 1985 funding for "core support" projects: \$68,125.

Principal Investigator and Institute	Title	Amount in 1985 US \$
TANDON, H.D. All-India Institute of Medical Sciences New Delhi	<u>Oral contraceptives</u> The entero-hepatic metabolism of contraceptive steroids in women (84035)	15 000
	<u>Male Fertility</u> The efficacy of a single intramuscular injection of a long-acting androgen ester (84046)	19 764
RAJALAKSHMI, M. University of Delhi Delhi	<u>Injectables</u> Return of fertility following discontinuation of injectable contraceptives (80911)	20 000
	Introduction of NET-EN in national FP programmes (83012)	3 000
	Psychosocial factors affecting continuation/discontinuation of IUD/pill in India (80004)	-
	Participation of rural practitioners in the delivery of FP services (82050)	5 780
	Phase III comparative random clinical trial with NET-EN (200mg) given every 2 months and NET-EN (50mg) + E2 val. every month (84906)	3 000
SAXENA, B.N. Indian Council of Medical Research New Delhi	Role of health delivery services on acceptance of family planning (80087)	62 600
<u>Indonesia</u>	<u>Injectables</u>	
AFFANDI, B. University of Indonesia Jakarta	Phase II study of a bio- erodible delivery system for levonorgestrel (83911)	-
	Phase III clinical trial of HRP102 and cycloprovera (83913)	-
	Phase II clinical trial of different doses of cycloprovera (85910D)	4 900

Principal Investigator and Institute	Title	Amount in 1985 US \$
SUDOMO, S. National Family Planning Co-ordinating Board Jakarta	Phase IV comparative study of NET-EN and DMPA in Indonesia (82047)	25 000
LUBIS, F. University of Indonesia Jakarta	Determinants of variation in family planning acceptance in rural Java (80023)	-
HINTING, A. Airlangga University Surabaya	Objective parameters of semen analysis from fertile and infertile men (83046)	
ARSYAN, K.M. Sriwiyaya University Palembang	The value of high ligation of varicocele in a group of infertile men	14 600
<u>Sri Lanka</u>		
JAYASENA, K. University of Sri Lanka Peradeniya	A multicentre collaborative approach for the isolation of fertility regulating compounds from plants (77918)	60 000
SAMARAWICKRAMA, G.P. Ruhuna University College Galle	Role of village volunteers (81054)	2 200
<u>Thailand</u>		
WHO Collaborating Centre for Research in Human Reproduction Chiang Mai University Chiang Mai	WHO collaborative study on neoplasia and steroid contraceptives (78912)	34 013
TIENG PARDTHAISONG Chiang Mai University Chiang Mai	Long-term follow-up of children exposed to hormonal contraceptives during lactation (84089)	28 568
WHO Collaborating Centre for Research in Human Reproduction Chulalongkorn Hospital Medical School <sup>1)</sup> Bangkok	<u>Oral Contraceptives</u> The effect of different combi- nation oral contraceptives on lipid metabolism (78928)	c
	Case-control study of neoplasia and steroid contraceptives (78912)	18 500

1) Total 1985 funding for "core support" projects: \$80,055.

Principal Investigator and Institute	Title	Amount in 1985 US \$
	<u>IUD Studies</u>	
	A randomized comparative study of interval insertion of three IUDs: Copper T 220 C, Nova T and WHO Levonorgestrel 2ug (82901)	c
	<u>Injectable Contraceptives</u>	
	Effects of long-term use of DMPA on lipid metabolism (82913)	c
	The effect of DMPA and NET-EN on lipid and lipoprotein metabolism (81908)	c
	Phase I pharmacokinetic/pharmacodynamic study on different doses of Cycloprovera and DMPA (81910)	c
	Phase I pharmacokinetic/pharmacodynamic study on different doses of HRP 102 and NET-EN (81913)	c
PRAMUAN VIRUTAMASEN Chulalongkorn Hospital and Medical School Bangkok	Pilot study to assess the pharmacodynamic effects of DMPA in male infants (82905)	-
	A pharmacokinetic/pharmacodynamic study of a levonorgestrel ester and its oxine (85907A)	7 900
	A pharmacokinetic/pharmacodynamic study of levonorgestrel ester oxime (85913A)	3 850
SUPAWAT CHUTIVONGSE Chulalongkorn Hospital and Medical School Bangkok	Pharmacokinetic/pharmacodynamic study of different doses of cycloprovera and HRP 102 (83915)	-
	Phase II clinical trial of HRP 102 and HRP 103 (85911B)	5 160
DUSITSIN, N. Chulalongkorn Hospital and Medical School Bangkok	The use of progesterone-releasing vaginal rings post-partum: a comparative study of two dosages (85903B,	23 220

Principal Investigator and Institute	Title	Amount in 1985 US \$
PUTTIPONGSE VARAVUDI Chulalongkorn University Bangkok	<u>Infertility</u>	
	Evaluation of drugs in the treatment of the sub-fertile male (78929)	c
	ATP in semen: Its significance for the management of male patients with infertility (83902)	-
	Case control study to assess the role of certain sexually transmitted diseases in the etiology of infertility in the woman (79923)	c
WHO Collaborating Centre for Research in Human Reproduction Siriraj Hospital <sup>1)</sup> Bangkok	Effect of non-steroidal progestin on lipoprotein metabolism (84047)	14 780
	<u>Oral Contraceptives</u>	
	A study of post-partum contraception: comparison of different pill regimes (81902)	c
	<u>IUD Studies</u>	
	Comparative study of the Cu T 220C and Cu T 380A in multiparous women (79914)	c
	A randomized comparative study of interval insertion of three IUDs: Copper T 220 C, Nova T and WHO Levonorgestrel 2ug (82901)	c
	<u>Injectable Contraceptives</u>	
	Phase III clinical trial of HRP 102 and cycloprovera (83913)	c
Use effectiveness and side effects of different dosages of DMPA 150 mg or 100 mg/ 12 weeks (81912)	c	
Therapeutic effectiveness of ethinyl oestradiol + estrone sulphate on prolonged bleeding in women using DMPA (80902)	c	

1) Total 1985 funding for "core support" projects: \$42,999.

Principal Investigator and Institute	Title	Amount in 1985 US \$
	WHO collaborative study on neoplasia and steroid contraceptives (78912)	14 615
	<u>Gestational Trophoblastic Disease</u>	
	Prophylactic chemotherapy following hydrated mole. A randomized controlled trial of methotrexate and actinomycin D (83906)	-
	<u>Infertility</u>	
	Diagnosis and management of the infertile couple (78923)	c
	The treatment of oligospermia with clomiphene citrate - a double blind trial (80922)	c
	ATP in semen: Its significance for the management of male patients with infertility (83902)	c
APICHAT CHAMRATRITH Mahidol University Bangkok	Effects of reduced family size on status of MCH in Thailand (80031)	34 500
AMARA SOONTHORNDHADA Mahidol University Bangkok	The effect of informal communication on vasectomy practice in rural areas (83027)	-
VICHAI REUTRAKUL Mahidol University Bangkok	Chemical and pharmacological investigations of high scoring computer-rated plants (84014)	35 500
	Synthesis of analogues of gossypol and related compounds (82038)	10 000
SIRIKULCHAYANONTA, C. Institute of Maternal and Child Health/Family Planning Bangkok	The use of model mothers as family planning motivators in a Thai village (84074)	-



## INSTITUTION STRENGTHENING ACTIVITIES IN THE SOUTH EAST ASIA REGION

The Programme's activities in the South East Asia Region address the strengthening of capabilities for research in family planning through the provision of core support to institutions for the purchase of equipment and supplies, together with research training and consultant assistance in developing expertise and planning research.

Institution strengthening during 1985 has included:

### *Strengthening of human resources*

- research training
- staff support

### *Improvement of facilities*

- equipment and supplies
- transport

### *Development and review of research plans and protocols*

- consultants
- WHO staff inputs

### *Standardization and quality control of laboratory and clinical procedures*

### *Ad hoc provision of small supplies, and journal subscriptions*

SPECIAL PROGRAMME OF RESEARCH IN HUMAN REPRODUCTION

Core Support for Institution Strengthening to Institutions  
in the South East Asia Region in 1985

Institutions	Amount in US \$
<u>INDIA</u>	
WHO Collaborating Centre for Research in Human Reproduction: Institute for Research in Reproduction Bombay	5 000
WHO Collaborating Centre for Research in Human Reproduction: Postgraduate Institute of Medical Education and Research Chandigarh	5 623
WHO Collaborating Centre for Research in Human Reproduction: All-India Institute of Medical Sciences New Delhi	9 423
Indian Council of Medical Research New Delhi	-
<u>INDONESIA</u>	
National Family Planning Coordinating Board (BKKBN) <sup>1)</sup> Jakarta	136 035
<u>THAILAND</u>	
WHO Collaborating Centre for Research in Human Reproduction: Chulalongkorn Hospital Medical School Bangkok	22 115
WHO Collaborating Centre for Research in Human Reproduction: Siriraj Hospital Bangkok	2 078

1) Funds from UNFPA; WHO (HRP) is Executing Agency.

HOME REGION = 3  
04 MAR 1986 10:04  
(1MS117)

WHO SPECIAL PROGRAMME IN HUMAN REPRODUCTION

PAGE 1

RESEARCH TRAINING GRANTS

\*\* VISITING SCIENTISTS

SELECTION: HOME REGION (3) AND DATE OF AWARD IS USED AND FROM JAN/85 TO DEC/85

SCIENTIST RECEIVING GRANT/

PURPOSE

HOME INSTITUTION

HOST INSTITUTION

CF GRANT

PERIOD

SCIENTIST RECEIVING GRANT/ HOME INSTITUTION	HOST INSTITUTION	PURPOSE CF GRANT	PERIOD
3911 FERZA-BEGUM S. ----- THE UNIVERSITY OF DHAKA DHAKA-5 BANGLADESH	UNIVERSITY OF EXETER EXETER UNITED KINGDOM	RT837 M.A. COURSE IN POPULATION RESEARCH	09 MONTHS (OCT 85 - JUL 86)
3180 SETTY B.S. ----- CENTRAL DRUG RESEARCH INSTITUTE LUCKNOW INDIA	SEVERAL INSTITUTIONS	RT844 PHYSIOLOGY OF THE EPIDIDYMIS	05 MONTHS (SEP 85 - FEB 86)
3847 LUTAN D. ----- UNIVERSITY OF NORTH SUMATRA MEDAN INDONESIA	UNIVERSITY OF SINGAPORE KANDANG KERBAU HOSPITAL SINGAPORE SINGAPORE	TU060 GYNAECOLOGIC ENDOCRINOLOGY	12 MONTHS (JUL 85 - JUL 86)
3849 RIKRIK A.I. ----- HASSAN SADIKIN GENERAL HOSPITAL BANDUNG INDONESIA	UNIVERSITY OF SINGAPORE KANDANG KERBAU HOSPITAL SINGAPORE SINGAPORE	TU061 RADIOIMMUNASSAY FOR REPRODUCTIVE HORMONES	12 MONTHS (AUG 85 - AUG 86)
3858 SUMITRO W. ----- UNIVERSITY OF JIPONEGORO SEMARANG INDONESIA	UNIVERSITY OF NOTTINGHAM NOTTINGHAM UNITED KINGDOM	TU062 PSYCHOLOGICAL MEDICINE AS APPLIED TO FAMILY PLANNING	12 MONTHS (JUL 85 - JUL 86)
3542 AMAFA SCINTHORNHADA ----- MAHIDUL UNIVERSITY BANGKOK THAILAND	LONDON SCHOOL OF HYGIENE AND TROPICAL MEDICINE LONDON UNITED KINGDOM	RT817 COURSE ON FAMILY PLANNING IMPACT EVALUATION	03 MONTHS (JUL 85 - OCT 85)
3912 JIVASAK-APIMAS S. ----- MAHIDUL UNIVERSITY SIRIRAJ HOSPITAL BANGKOK THAILAND	UNIVERSITY OF EXETER EXETER UNITED KINGDOM	RT838 M.A. COURSE IN POPULATION RESEARCH	09 MONTHS (OCT 85 - JUL 86)

0547a/zaz  
10.03.86

WHO SPECIAL PROGRAMME IN HUMAN REPRODUCTION  
R E S E A R C H T R A I N I N G G R A N T S

\*\* VISITING SCIENTISTS

SELECTION: HOME REGION (3) AND DATE OF AWARD IS USED AND FROM JAN/85 TO DEC/85  
SCIENTIST RECEIVING GRANT/  
HOME INSTITUTION

HOME INSTITUTION	HOST INSTITUTION	PURPOSE OF GRANT	PERIOD
3926 KONGSAYKEEPONG R. CHULALONGKORN HOSPITAL AND MEDICAL SCHOOL, WHO CCF BANGKOK THAILAND	ROYAL INFIRMARY GLASGOW UNITED KINGDOM	RT848 BIOCHEMISTRY, METHODS OF LIPID AND LIPROTEIN ANALYSIS	04 MONTHS (OCT 85 - FEB 86)
3853 USANACHITT C. CHULALONGKORN UNIVERSITY BANGKOK THAILAND	THREE INSTITUTIONS	RT793 CHEMILUMINESCENCE TECHNIQUES FOR STEROID HORMONE ASSAYS	04 MONTHS (JUN 85 - OCT 85)

NO OF GRANTS, TOTAL AMOUNT AWARDED:		
"RG" TYPE	0 -	0
"RT" TYPE	6 -	63,098
"TU" TYPE	3 -	70,000
"VIS. SCIENTIST" TYPE	0 -	0
ALL TYPES	9 -	133,098

Summary of 1985 costs for Research Training

Country	Amount in US \$
Bangladesh	12,140
India	16,340
Indonesia	70,000
Thailand	34,618
Total	133,098

0547a/zaz  
10.03.86

SEACMR/86

SPECIAL PROGRAMME OF RESEARCH IN HUMAN REPRODUCTION

Meetings, Seminars, Workshops, Symposia and Training Courses  
held in the South East Asia Region, 1985

Steering Committee Meeting, Task Force on Post-ovulatory Methods for Fertility Regulation including joint Steering Committee Meeting ICMR/WHO and Scientific Meeting of Post-Coital and Menses-Inducing Drugs	Bangalore January 1985
Course on Radioimmunoassay of Hormones in Reproductive Physiology	New Delhi Oct-Nov 1985

SPECIAL PROGRAMME OF RESEARCH IN HUMAN REPRODUCTION

Centres in the South East Asia Region Participating in  
Standardization and Quality Control Programme  
for Reproductive Hormones and Clinical Chemistry

BANGLADESH

Department of Endocrinology  
Diabetic Association of Bangladesh  
Dhaka

Division of Endocrinology  
Central Drug Research Institute  
Lucknow

Department of Endocrinology  
Postgraduate Institute  
of Basic Medical Sciences  
Madras

INDIA

Postgraduate Department of Medicine  
Sarojini Naidu Medical College  
Agra

Department of Clinical Pharmacology  
All India Institute  
of Medical Sciences  
New Delhi

Radioimmunoassay Department  
St John's Medical College Hospital  
Bangalore

Department of Experimental Biology  
All India Institute  
of Medical Sciences  
New Delhi

Institute for Research  
in Reproduction  
Bombay

Department of Reproductive Biology  
All India Institute  
of Medical Sciences  
New Delhi

Radioimmunoassay Laboratory  
for Protein Hormones  
Institute for Research  
in Reproduction  
Bombay

National Institute of Immunology  
New Delhi

Department of Endocrinology  
T.N. Medical College  
and Nair Hospital  
Bombay

Sher-i-Kashmir Institute  
of Medical Sciences  
Srinagar

Department of Biochemistry  
Postgraduate Institute of  
Medical Education and Research  
SSKM Hospital  
Calcutta

INDONESIA

Reproductive Endocrinology Clinic  
Dr Cipto Mangunkusumo Hospital  
Jakarta

Department of Obstetrics  
and Gynaecology  
Postgraduate Institute of  
Medical Education and Research  
Chandigarh

SRI LANKA

Nuclear Medicine Unit  
Faculty of Medicine  
University of Sri Lanka  
Peradeniya

National Institute of Nutrition  
Hyderabad

Toxicology and Experimental Medicine  
Laboratory  
Central Drug Research Institute  
Lucknow

0548a/zaz  
10.03.86

- 22 -

THAILAND

Department of Physiology  
Siriraj Hospital  
Bangkok

Family Planning Research Unit  
Department of Obstetrics  
and Gynaecology  
Chulalongkorn Hospital  
Bangkok

Research Institute  
for Health Sciences  
Chiang Mai University  
Chiang Mai

SPECIAL PROGRAMME OF RESEARCH IN HUMAN REPRODUCTION

Centres in the South East Asia Region  
Receiving Ad Hoc Supplies and Spare Parts

INDIA

Postgraduate Department of Medicine  
S.N. Medical College  
Agra

Department of Biochemistry  
Indian Institute of Science  
Bangalore

Division of Human Genetics  
St John's Medical College  
Bangalore

Radioimmunoassay Department  
St John's Medical College Hospital  
Bangalore

Bose Institute  
Calcutta

Department of Zoology  
University of Delhi  
Delhi

Zoology Department  
Punjab Agricultural University  
Ludhiana

Department of Reproductive  
Biomedicine  
National Institute of Health  
and Family Welfare  
New Delhi

MONGOLIA

Department of Internal Medicine  
Mongolian State Medical Institute  
Ulan Bator

THAILAND

Reproductive Biology Research Centre  
Faculty of Medicine  
Ramathibodi Hospital  
Bangkok

Faculty of Medicine  
Ramathibodi Hospital  
Bangkok

1985 Costs for Ad Hoc Supplies and Spare Parts

Country	US \$
India	10 000
Mongolia	1 500
Thailand	2 000
Total	13 500



SPECIAL PROGRAMME OF RESEARCH IN HUMAN REPRODUCTION

Centres in the South East Asia Region Participating in the  
Journal Subscriptions Programme in 1985

BANGLADESH

Clinic Firoza Begum  
Dhaka

Clinic Suraiya Jabeen  
Dhaka

Bangladesh Fertility Research  
Programme  
Mahammadpur  
Dhaka

National Institute of Population  
Research and Training (NIPORT)  
Azimpur  
Dhaka

INDIA

Department of Anatomy  
St John's Medical College  
Bangalore

WHO Collaborating Centre for  
Research in Human Reproduction  
Institute for Research  
in Reproduction  
Indian Council of Medical Research  
Bombay

Obstetrics and Gynaecology Research  
Centre  
KEM Hospital  
Bombay

Department of Pharmacology  
Postgraduate Institute of Medical  
Education and Research  
Chandigarh

WHO Collaborating Centre for  
Research in Human Reproduction  
Department of Obstetrics  
and Gynaecology  
Postgraduate Institute of Medical  
Education and Research  
Chandigarh

WHO Collaborating Centre for  
Research in Human Reproduction  
All India Institute  
of Medical Sciences  
Ansari Nagar  
New Delhi

MONGOLIA

Department of Anatomy  
Mongolian State Medical Institute  
Ulan Bator

SRI LANKA

Department of Pharmacology  
University of Sri Lanka  
Peradeniya

THAILAND

Department of Biology  
Chulalongkorn University  
Bangkok

WHO Collaborating Centre for  
Research in Human Reproduction  
Department of Obstetrics  
and Gynaecology  
Chulalongkorn Hospital Medical School  
Bangkok

Department of Biochemistry  
Mahidol University  
Bangkok

WHO Collaborating Centre for  
Research in Human Reproduction  
Family Planning Research Unit  
Department of Obstetrics  
and Gynaecology  
Siriraj Hospital  
Mahidol University  
Bangkok

PARTICIPATION OF SCIENTISTS AND ADMINISTRATORS  
FROM THE SOUTH EAST ASIA REGION IN TECHNICAL AND OTHER MEETINGS  
OF THE SPECIAL PROGRAMME DURING 1985

---

SPECIAL PROGRAMME OF RESEARCH IN HUMAN REPRODUCTION  
Participants from the South East Asia Region in 1985

Scientific and Technical Advisory Group

Dr P.K. Devi	India
Dr Charas Suwanwela	Thailand
Dr S. Chinnatamby	Sri Lanka

Committee on Resources for Research

Dr Nikorn Dusitsin	Thailand
Dr Srihartati P. Pandi	Indonesia
Dr M.R.N. Prasad	India

Review Group

Dr P. Matangkasombut	Thailand
----------------------	----------

Steering Committees

Behavioural and Social Determinants of Fertility Regulation

Dr Aphichat Chamrathirong	Thailand
Dr M. Khan	India
Dr Pudjo Rahardjo	Indonesia

Long-Acting Agents

Dr B. Affandi	Indonesia
Dr Pramuan Virutamasen	Thailand

Plants

Dr Vichai Reutrakul	Thailand
---------------------	----------

Post-ovulatory Methods for Fertility Regulation

Dr Chandana Das	India
-----------------	-------

Birth Control Vaccines

Dr G.P. Talwar	India
----------------	-------

Methods for the Regulation of Male Fertility

Dr M. Rajalakshmi	India
Dr M. Tajuddin	Indonesia

Safety and Efficacy of Methods of Fertility Regulation

Dr Halida Ahkter  
Dr K. Prema

Bangladesh  
India

Standardization and Quality Control

Dr D.K. Hazra

India

Methods for the Natural Regulation of Fertility

Dr Kosin Amatayakul

Thailand

SPECIAL PROGRAMME OF RESEARCH IN HUMAN REPRODUCTION

Contributions to the Programme from countries in the South East Asia Region

Donor	Contributions (in US\$)	
	1985	Cumulative 1972-85
India	35 000	283 489
Thailand	5 000	36 610
TOTAL	40 000	320 099

Representatives from countries in the South East Asia Region  
attending the Meeting of the Policy and Coordination Advisory Committee  
of the WHO Special Programme of Research, Development  
and Research Training in Human Reproduction

Geneva, 25-27 November 1985

INDIA

Mr S.S. Dhanoa

INDONESIA

Professor A.A. Loedin  
Dr Srihartati Pandi

THAILAND

Dr Nikorn Dusitsin