

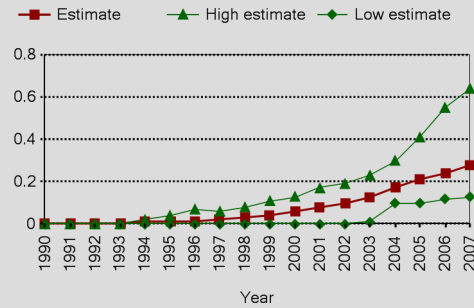
TAJIKISTAN

Epidemiological Country Profile on HIV and AIDS



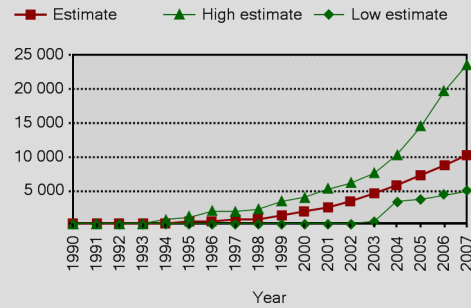
Epidemic estimates

Estimated adult HIV (15-49) prevalence %



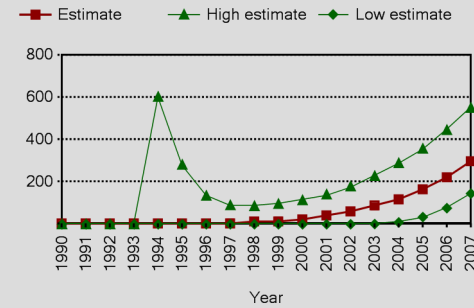
Source: UNAIDS/WHO, 2008

Number of people living with HIV



Source: UNAIDS/WHO, 2008

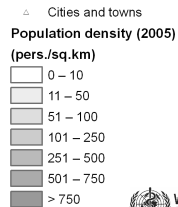
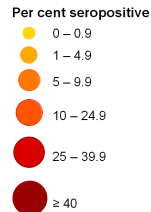
Annual number of AIDS deaths



Source: UNAIDS/WHO, 2008



HIV prevalence among injecting drug users, 2002-2006



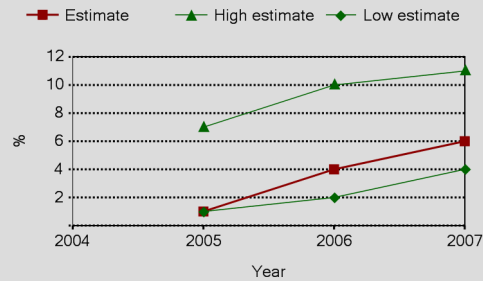
The boundaries and names shown and the designations used on this map do not imply the expression of any opinion whatsoever on the part of the World Health Organization concerning the legal status of any country territory, city or area or of its authorities, or concerning the delimitation of its frontiers or boundaries. Dotted lines on maps represent approximate border lines for which there may not yet be full agreement. © WHO 2008. All rights reserved.

Data source: UNAIDS, WHO, CIESIN/FAO/CIAT, DCW, USCB
Map production: Public Health Information and Geographic Information Systems (GIS) World Health Organization



Coverage estimates (%)

Estimated antiretroviral therapy coverage (%)



Source: UNAIDS/WHO, 2008

Source: UNAIDS/UNICEF/WHO, 2008

Trends in behaviours

Source:

Source:

Urban and rural adult (15-49) HIV prevalence (%)

Year	Urban	Rural

Source: See sources above in map.