

2004
Update



Azerbaijan

EPIDEMIOLOGICAL FACT SHEETS
ON HIV/AIDS AND SEXUALLY TRANSMITTED INFECTIONS



Joint United Nations Programme on HIV/AIDS

UNAIDS

UNHCR • UNICEF • WFP • UNDP • UNFPA
UNODC • ILO • UNESCO • WHO • WORLD BANK



World Health
Organization

HIV/AIDS estimates

In 2003 and during the first quarter of 2004, UNAIDS and WHO worked closely with national governments and research institutions to recalculate current estimates on people living with HIV/AIDS. These calculations are based on the previously published estimates for 1999 and 2001 and recent trends in HIV/AIDS surveillance in various populations. A methodology developed in collaboration with an international group of experts was used to calculate the new estimates on prevalence and incidence of HIV and AIDS deaths, as well as the number of children infected through mother-to-child transmission of HIV. Different approaches were used to estimate HIV prevalence in countries with low-level, concentrated or generalised epidemics. The current estimates do not claim to be an exact count of infections. Rather, they use a methodology that has thus far proved accurate in producing estimates that give a good indication of the magnitude of the epidemic in individual countries. However, these estimates are constantly being revised as countries improve their surveillance systems and collect more information.

Adults in this report are defined as women and men aged 15 to 49. This age range covers people in their most sexually active years. While the risk of HIV infection obviously continues beyond the age of 50, the vast majority of those who engage in substantial risk behaviours are likely to be infected by this age. The 15 to 49 range was used as the denominator in calculating adult HIV prevalence.

Estimated number of adults and children living with HIV/AIDS, end of 2003

These estimates include all people with HIV infection, whether or not they have developed symptoms of AIDS, alive at the end of 2003:

Adults and children	1,400		
Low estimate	500		
High estimate	2,800		
Adults (15-49)	1,400	Adult rate (%)	<0.1
Low estimate	500	Low estimate	
High estimate	2,800	High estimate	<0.2
Children (0-15)			
Low estimate			
High estimate			
Women (15-49)			
Low estimate			
High estimate			

Estimated number of deaths due to AIDS

Estimated number of adults and children who died of AIDS during 2003:

Adults and Children	
Low estimate	
High estimate	

Estimated number of orphans

Estimated number of children who have lost their mother or father or both parents to AIDS and who were alive and under age 17 at the end of 2003:

Current living orphans	
Low estimate	
High estimate	

UNAIDS/WHO Working Group on Global HIV/AIDS and STI Surveillance

Global Surveillance of HIV/AIDS and sexually transmitted infections (STIs) is a joint effort of WHO and UNAIDS. The UNAIDS/WHO Working Group on Global HIV/AIDS and STI Surveillance, initiated in November 1996, guides respective activities. The primary objective of the Working Group is to strengthen national, regional and global structures and networks for improved monitoring and surveillance of HIV/AIDS and STIs. For this purpose, the Working Group collaborates closely with national AIDS programmes and a number of national and international experts and institutions. The goal of this collaboration is to compile the best information available and to improve the quality of data needed for informed decision-making and planning at national, regional, and global levels. The Epidemiological Fact Sheets are one of the products of this close and fruitful collaboration across the globe.

Within this framework, the Fact Sheets collate the most recent country-specific data on HIV/AIDS prevalence and incidence, together with information on behaviours (e.g. casual sex and condom use) which can spur or stem the transmission of HIV.

Not unexpectedly, information on all of the agreed upon indicators was not available for many countries in 2003. However, these updated Fact Sheets do contain a wealth of information which allows identification of strengths in currently existing programmes and comparisons between countries and regions. The Fact Sheets may also be instrumental in identifying potential partners when planning and implementing improved surveillance systems.

The fact sheets can be only as good as information made available to the UNAIDS/WHO Working Group on Global HIV/AIDS and STI Surveillance. Therefore, the Working Group would like to encourage all programme managers as well as national and international experts to communicate additional information to them whenever such information becomes available. The Working Group also welcomes any suggestions for additional indicators or information proven to be useful in national or international decision-making and planning.

Assessment of the epidemiological situation

2004

As of 1 January 2004, 596 HIV cases had been registered in Azerbaijan (22 are foreign citizens). Available data suggest that 45% of HIV positive citizens were infected outside of country, mainly in Russia and Ukraine. 80% of all HIV cases are among men.

Majority of cases are registered in capital city Baku. The dominant mode of transmission is IDU (63% of all cases with known transmission route). The local traditions also prevent women to actively seek HIV/AIDS/STI care which is worsened by the lack of access to HIV testing and counselling. The mandatory HIV testing policy no longer exists in Azerbaijan. At the same time access to voluntary HIV testing and especially counselling is extremely limited. Only about 2.3% of the total population has been tested for HIV in 2003. Results of WHO supported survey implemented in late 2003 showed high HIV prevalence among IDU - 16.5% (in Baku is 13%, city Lenkoran - 19.5%) and also very high HCV prevalence - 55%. Those figures are much higher than available statistical data. The most affected groups are the so-called street IDU. Prevalence among them is 12 times higher than in IDU registered in narcology centres in Baku. In Lenkoran, all HIV positives were street IDU. This indicates that the main part of the epidemic remains outside of national preventive/care efforts. The number of drug users, especially IDU, is very high in Azerbaijan, estimated at up to 300 000 - 400 000 or even higher, 50% to 60% of those injecting heroin.

HIV Prevalence among FSW is as high as 8.5%. Prevalence of other STI is also quite high, namely - syphilis - 9%, Chlamydia 63%. Condom use rates remain very low. It means that risk of STI transmission and related sexual transmission of HIV is high. Low awareness toward HIV/AIDS/STI is common.

The survey's data suggest that the available national statistical data does not reflect the true picture of the epidemic. It also indicates that there is a very high potential for further growth of the HIV epidemic and its involvement might be explosive.

Basic indicators

For consistency reasons the data used in the table below are taken from official UN publications.

DEMOGRAPHIC DATA	YEAR	ESTIMATE	SOURCE
Total population (thousands)	2004	8,447	UN population division database
Female population aged 15-24 (thousands)	2004	818	UN population division database
Population aged 15-49 (thousands)	2004	4,830	UN population division database
Annual population growth rate (%)	1992-2002	1.1	UN population division database
% of population in urban areas	2003	50.2	UN population division database
Average annual growth rate of urban population	2000-2005	0.6	UN population division database
Crude birth rate (births per 1,000 pop.)	2004	17.6	UN population division database
Crude death rate (deaths per 1,000 pop.)	2004	5.6	UN population division database
Maternal mortality rate (per 100,000 live births)	2000	94	WHO (WHR2004)/UNICEF
Life expectancy at birth (years)	2002	66	World Health Report 2004, WHO
Total fertility rate	2002	2.1	World Health Report 2004, WHO
Infant mortality rate (per 1,000 live births)	2000	61	World Health Report 2004, WHO
Under 5 mortality rate (per 1,000 live births)	2000	75	World Health Report 2004, WHO

SOCIO-ECONOMIC DATA	YEAR	ESTIMATE	SOURCE
Gross national income, ppp, per capita (Int.\$)	2002	2,920	World Bank
Gross domestic product, per capita % growth	2001-2002	9.7	World Bank
Per capita total expenditure on health (Int.\$)	2001	48	World Health Report 2004, WHO
General government expenditure on health as % of total expenditure on health	2001	66.9	World Health Report 2004, WHO
Total adult illiteracy rate			
Adult male illiteracy rate			
Adult female illiteracy rate			
Gross primary school enrolment ratio, male	2000/2001	not available	UNESCO
Gross primary school enrolment ratio, female	2000/2001	not available	UNESCO
Gross secondary school enrolment ratio, male	2000/2001	not available	UNESCO
Gross secondary school enrolment ratio, female	2000/2001	not available	UNESCO

Contact address

UNAIDS/WHO Working Group on Global
HIV/AIDS and STI Surveillance
20, Avenue Appia
CH - 1211 Geneva 27
Switzerland
Fax: +41-22-791-4834

email: hivstrategicinfo@who.int
estimates@unaids.org

website: <http://www.who.int/hiv>
<http://www.unaids.org>

Extracts of the information contained in these fact sheets may be reviewed, reproduced or translated for research or private study but not for sale or for use in conjunction with commercial purposes. Any use of information in these fact sheets should be accompanied by the following acknowledgment "UNAIDS/WHO epidemiological fact sheets on HIV/AIDS and Sexually Transmitted Infections, 2004 Update".

HIV prevalence in different populations

This section contains information about HIV prevalence in different populations. The data reported in the tables below are mainly based on the HIV database maintained by the United States Bureau of the Census where data from different sources, including national reports, scientific publications and international conferences are compiled. To provide a simple overview of the current situation and trends over time, summary data are given by population group, geographical area (Major Urban Areas versus Outside Major Urban Areas), and year of survey. Studies conducted in the same year are aggregated and the median prevalence rates (in percentages) are given for each of the categories. The maximum and minimum prevalence rates observed, as well as the total number of surveys/sentinel sites, are provided with the median, to give an overview of the diversity of HIV-prevalence results in a given population within the country. Data by sentinel site or specific study from which the medians were calculated are printed at the end of this fact sheet.

The differentiation between the two geographical areas Major Urban Areas and Outside Major Urban Areas is not based on strict criteria, such as the number of inhabitants. For most countries, Major Urban Areas were considered to be the capital city and - where applicable - other metropolitan areas with similar socio-economic patterns. The term Outside Major Urban Areas considers that most sentinel sites are not located in strictly rural areas, even if they are located in somewhat rural districts.

HIV sentinel surveillance*

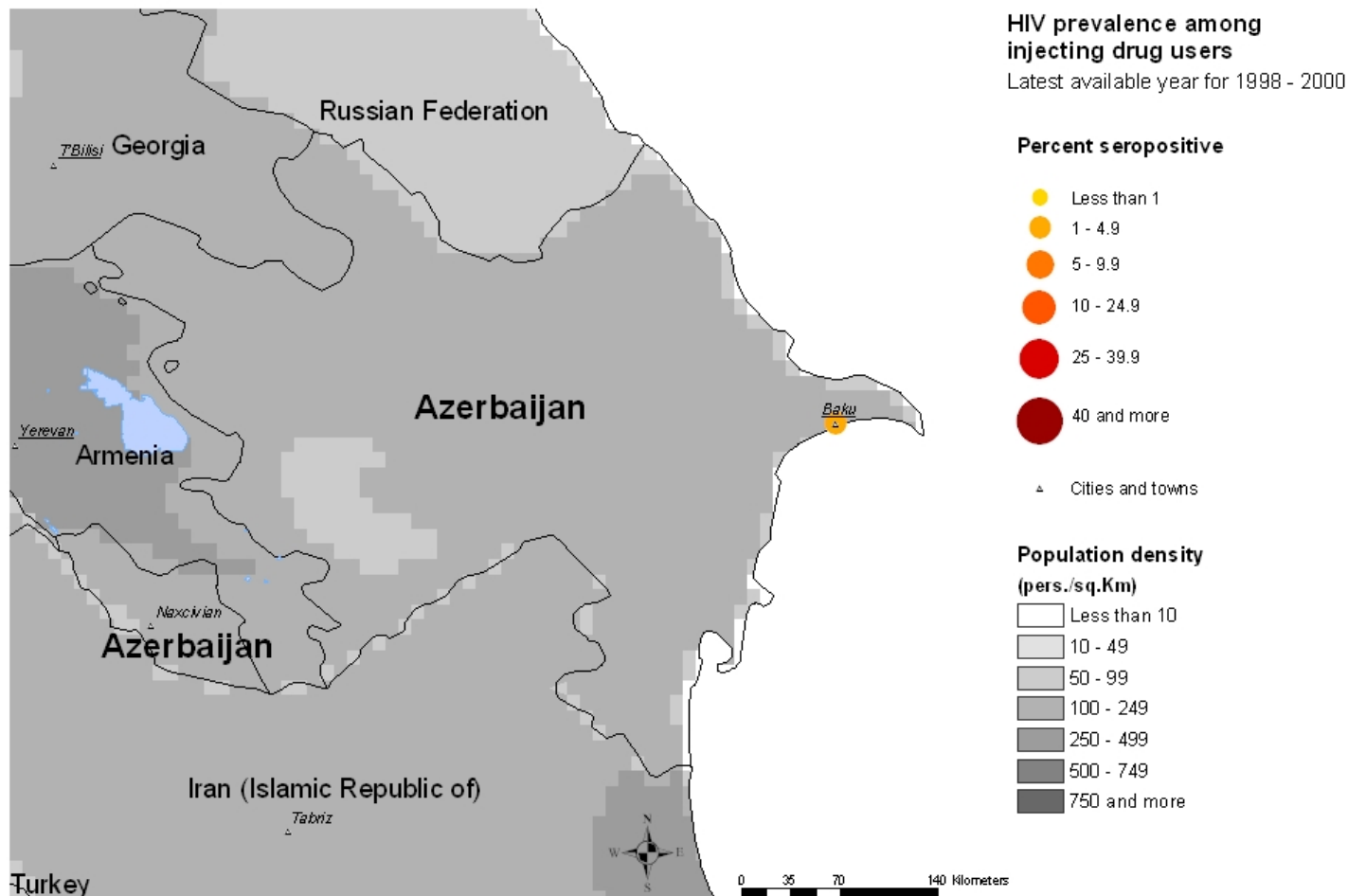
Group	Area		1987	1988	1989	1990	1991	1992	1993	1994	1995	1996	1997	1998	1999	2000	2001	2002	2003
Pregnant women	Major urban areas	N-Sites											1.00	2.00	1.00	1.00			
		Minimum											0	0.07	0.03	0			
		Median											0	0.07	0.03	0			
		Maximum											0	0.07	0.03	0			
	Outside major urban areas	N-Sites													1.00				
		Minimum													0				
		Median													0				
		Maximum													0				
Sex workers	Major urban areas	N-Sites													1.00				
		Minimum													2.31				
		Median													2.31				
		Maximum													2.31				
STI patients	Major urban areas	N-Sites		1.00	1.00	1.00	1.00	1.00	1.00	1.00	1.00	2.00			1.00				
		Minimum		0	0	0	0	0	0	0	0	0	0.21		0.16				
		Median		0	0	0	0	0	0	0	0	0	0.24		0.16				
		Maximum		0	0	0	0	0	0	0	0	0	0.27		0.16				
	Outside major urban areas	N-Sites												1.00					
		Minimum												0					
		Median												0					
		Maximum												0					
Men having sex with men																			
Tuberculosis patients																			

*Detailed data by site can be found in the Annex.

Maps & charts

Mapping the geographical distribution of HIV prevalence among different population groups may assist in interpreting both the national coverage of the HIV surveillance system as well in explaining differences in levels of prevalence. The UNAIDS/WHO Working Group on Global HIV/AIDS and STI Surveillance, in collaboration with the WHO Public Health Mapping Team, Communicable Diseases, is producing maps showing the location and HIV prevalence in relation to population density, major urban areas and communication routes. For generalized epidemics, these maps show the location of prevalence of antenatal surveillance sites.

Trends in antenatal sentinel surveillance for higher prevalence countries, or in prevalence among selected populations for countries with concentrated epidemics, are a new addition. These are presented for those countries where sufficient data exist.



The boundaries and names shown and the designations used on the map do not imply the expression of any opinion whatsoever on the part of the World Health Organization concerning the legal status of any country, territory, city or area or of its authorities, or concerning the delimitation of its frontiers or boundaries. Dotted lines on maps represent approximate border lines for which there may not yet be full agreement. WHO 2004, all rights reserved.

Reported AIDS cases

Following WHO and UNAIDS recommendations, AIDS case reporting is carried out in most countries. Data from individual AIDS cases are aggregated at the national level and sent to WHO. However, case reports come from surveillance systems of varying quality. Reporting rates vary substantially from country to country and low reporting rates are common in developing countries due to weaknesses in the health care and epidemiological systems. In addition, countries use different AIDS case definitions. A main disadvantage of AIDS case reporting is that it only provides information on transmission patterns and levels of infection approximately 5-10 years in the past, limiting its usefulness for monitoring recent HIV infections.

Despite these caveats, AIDS case reporting remains an important advocacy tool and is useful in estimating the burden of HIV-related morbidity as well as for short-term planning of health care services. AIDS case reports also provide information on the demographic and geographic characteristics of the affected population and on the relative importance of the various exposure risks. In some situations, AIDS reports can be used to estimate earlier HIV infection patterns using back-calculation. AIDS case reports and AIDS deaths have been dramatically reduced in industrialized countries with the introduction of Anti-Retroviral Therapy (ART).

1979	1980	1981	1982	1983	1984	1985	1986	1987	1988	1989	1990	1991	1992	1993	1994	1995	1996	1997	1998
			0	0	0	0	0	0	0	0	0	0	0	0	1	2	4	3	2
1999	2000	2001	2002	2003	Total	UNK	Date of last report												
9	18	17	15	20	91	0	7/11/2004												

Curable sexually transmitted infections (STIs)

The predominant mode of transmission of both HIV and other STIs is sexual intercourse. Measures for preventing sexual transmission of HIV and STIs are the same, as are the target audiences for interventions. In addition, strong evidence supports several biological mechanisms through which STIs facilitate HIV transmission by increasing both HIV infectiousness and HIV susceptibility. Thus, detection and treatment of individuals with STIs is an important part of an HIV control strategy. In summary, if the incidence/prevalence of STIs is high in a country, then there is the possibility of high rates of sexual transmission of HIV. Monitoring trends in STIs provides valuable insight into the likelihood of the importance of sexual transmission of HIV within a country, and is part of second generation surveillance. These trends also assist in assessing the impact of behavioural interventions, such as delaying sexual debut, reducing the number of sex partners and promoting condom use.

Clinical services offering STI care are an important access point for people at high risk for both STIs and HIV. Identifying people with STIs allows for not only the benefit of treating the STI, but for prevention education, HIV testing, identifying HIV-infected persons in need of care, and partner notification for STIs or HIV infection. Consequently, monitoring different components of STI prevention and control can also provide information on HIV prevention and control activities within a country.

STI syndromes

Reported cases	1996	1997	1998	1999	2000	2001	2002	2003		Incidence 2003
----------------	------	------	------	------	------	------	------	------	--	----------------

Comments:

Source:

Syphilis prevalence, women

Percent of blood samples taken from pregnant women aged 15-49 that test positive for syphilis - positive reaginic and treponemal test - during routine screening at selected antenatal clinics.

Year	Area	Rate	Range
------	------	------	-------

Comments:

Source:

Estimated prevalence of curable STIs among female sex workers

- Chlamydia

Year	Area	Rate	Range
------	------	------	-------

Comments:

Source:

- Gonorrhoea

Year	Area	Rate	Range
------	------	------	-------

Comments:

Source:

Estimated prevalence of curable STIs among female sex workers (continued)**- Syphilis**

Year	Area	Rate	Range
------	------	------	-------

Comments:

Source:

- Trichomoniasis

Year	Area	Rate	Range
------	------	------	-------

Comments:

Source:

Health service and care indicators

HIV prevention strategies depend on the twin efforts of care and support for those living with HIV or AIDS, and targeted prevention for all people at risk or vulnerable to the infection. It is difficult to capture such a large range of activities with one or just a few indicators. However, a set of well-established health care indicators may help to identify general strengths and weaknesses of health systems. Specific indicators, such as access to testing and blood screening for HIV, help to measure the capacity of health services to respond to HIV/AIDS - related issues.

Access to health care

Indicators	Year	Estimate	Source
% of population with access to health services - total	2001	<100%	Ministry of Health
% of population with access to health services - urban	2001	<100%	Ministry of Health
% of population with access to health services - rural	2001	<80%	Ministry of Health
Contraceptive prevalence rate (%)			
Percentage of contraceptive users using condoms			
% of births attended by skilled health personnel	2000	87.5	WHO
% of 1-yr-old children fully immunized - DPT	2002	97	WHO/UNICEF
% of 1-yr-old children fully immunized - Measles	2001	99	WHO/UNICEF
% of ANC clinics where HIV testing is available			

Number of adults (15-49) with advanced HIV infection receiving ARV therapy as of June 2004

Adults on treatment

Number:

Source: WHO

Estimated number of adults (15-49) in need of treatment in 2003

Adults needing treatment

Number: ...

Source: WHO/UNAIDS

Coverage of HIV testing and counselling

Number of public and NGO services providing testing and counselling services.

Year	Area	N=
2001	All	

Comments: VCT is organized in all 15 regional laboratories. There is no problem of access to VCT. Any person can receive HIV VCT in any medical settings.

Source: National Center in Respond to AIDS.

Knowledge and behaviour

In most countries the HIV epidemic is driven by behaviours (e.g.: multiple sexual partners, injecting drug use) that expose individuals to the risk of infection. Information on knowledge and on the level and intensity of risk behaviour related to HIV/AIDS is essential in identifying populations most at risk for HIV infection and in better understanding the dynamics of the epidemic. It is also critical information in assessing changes over time as a result of prevention efforts. One of the main goals of the 2nd generation HIV surveillance systems is the promotion of a standard set of indicators defined in the National Guide (Source: National AIDS Programmes, A Guide to Monitoring and Evaluation, UNAIDS/00.17) and regular behavioural surveys in order to monitor trends in behaviours and to target interventions.

The indicators on knowledge and misconceptions are an important prerequisite for prevention programmes to focus on increasing people's knowledge about sexual transmission, and, to overcome the misconceptions that act as a disincentive to behaviour change. Indicators on sexual behaviour and the promotion of safer sexual behaviour are at the core of AIDS programmes, particularly with young people who are not yet sexually active or are embarking on their sexual lives, and who are more amenable to behavioural change than adults. Finally, higher risk male-male sex reports on unprotected anal intercourse, the highest risk behaviour for HIV among men who have sex with men.

Knowledge of HIV prevention methods

Prevention indicator: Percentage of young people 15-24 who both correctly identify two ways of preventing the sexual transmission of HIV and who reject three misconceptions about HIV transmission.

Year	Male	Female
2000		2

Comments:

Source: MICS

Reported condom use at last higher risk sex (young people 15-24)

Prevention indicator: Proportion of young people reporting the use of a condom during sex with a non-regular partner.

Year	Male	Female
------	------	--------

Comments: For this indicator only data will be shown if they were collected after 1998.

Source:

Age-mixing in sexual partnerships among young women

The proportion of young women who have had sex in the last 12 months with a partner who is 10 or more years older than themselves.

Year	Area	Age group	Male	Female	All
------	------	-----------	------	--------	-----

Comments:

Source:

Reported non-regular sexual partnerships

Prevention indicator: Proportion of young people 15-24 having at least one sex partner other than a regular partner in the last 12 months.

Year	Male	Female
------	------	--------

Comments:

Source:

Knowledge and behaviour (continued)

Ever used a condom

Percentage of people who ever used a condom.

Year	Area	Age group	Male	Female	All
------	------	-----------	------	--------	-----

Comments:

Source:

Adolescent pregnancy

Percentage of teenagers 15-19 who are mothers or pregnant with their first child.

Year	Percentage
------	------------

Comments:

Source:

Age at first sexual experience

Proportion of 15-19 year olds who have had sex before age 15.

Year	Male	Female
2001		1

Comments:

Source: RHS

Prevention indicators

Male and female condoms are the only technology available that can prevent sexual transmission of HIV and other STIs. Persons exposing themselves to the risk of sexual transmission of HIV should have consistent access to high quality condoms. AIDS Programs implement activities to increase both availability of and access to condoms. These activities should be monitored and have resources directed to problem areas. The indicator below highlights the availability of condoms. However, even if condoms are widely available, this does not mean that individuals can or do access them.

Condom availability nationwide

Total number of condoms available for distribution nationwide during the preceding 12 months, divided by the total population aged 15-49.

Year	N	Rate
------	---	------

Comments:

Source:

Prevention of mother-to-child transmission (MTCT) nationwide

Percentage of women who were counselled during antenatal care for their most recent pregnancy, accepted an offer of testing and received their test results, of all women who were pregnant at any time in the preceding two years.

Year	N	Rate
2001		50%

Comments:

Source: National Center in Respond to AIDS.

Blood safety programs aim to ensure that the majority of blood units are screened for HIV and other infectious agents. This indicator gives an idea of the overall percentage of blood units that have been screened to high enough standards that they can confidently be declared free of HIV.

Screening of blood transfusions nationwide

Percentage of blood units transfused in the last 12 months that have been adequately screened for HIV according to national or WHO guidelines.

Year	N	Rate
2001		>63%

Comments:

Source: National Center in Respond to AIDS.

Sources

Data presented in this Epidemiological Fact Sheet come from several sources, including global, regional and country reports, published documents and articles, posters and presentations at international conferences, and estimates produced by UNAIDS, WHO and other United Nations agencies. This section contains a list of the more relevant sources used for the preparation of the Fact Sheet. Where available, it also lists selected national Web sites where additional information on HIV/AIDS and STI are presented and regularly updated. However, UNAIDS and WHO do not warrant that the information in these sites is complete and correct and shall not be liable whatsoever for any damages incurred as a result of their use.

Sociological survey conducted by National Center in Respond to AIDS and NGO "Imdad-SOS" support for people living with HIV/AIDS.

Azerbaijan 1997 European HIV Prevalence Database: December 1997 Update European Centre for the Epidemiological Monitoring of AIDS, WHO-EU Collaborating Centre on AIDS, Saint-Maurice, France.

Azerbaijan National AIDS Program 1999 Update UNAIDS Epidemiological Fact Sheet UNAIDS.

European Centre for the Epidemiological Monitoring of AIDS 2000 Prevalence of HIV Infection among Pregnant Women HIV/AIDS Surveillance in Europe, End-year report 2000, no. 64.

Websites:

Annex: HIV surveillance by site

Group	Area	1987	1988	1989	1990	1991	1992	1993	1994	1995	1996	1997	1998	1999	2000	2001	2002	2003
Pregnant women	Major urban areas	Baku											0.07					
		National											0	0.07	0.03	0		
	Outside major urban areas	Lewcorow district												0				
Sex workers																		
Injecting drug users	Major urban areas													2.31				
STI patients	Major urban areas	Baku												0.27				
		National		0	0	0	0	0	0	0	0			0.21				
	Outside major urban areas	Not specified												0				
Men having sex with men																		
Tuberculosis patients																		