



Key Focus Areas

To advance climate-resilient health, WHO works in three key focus areas:

1

Addressing the wide range of health impacts of climate change



Climate-resilient health

2

Strengthening the climate resilience and environmental sustainability of health systems and facilities



3

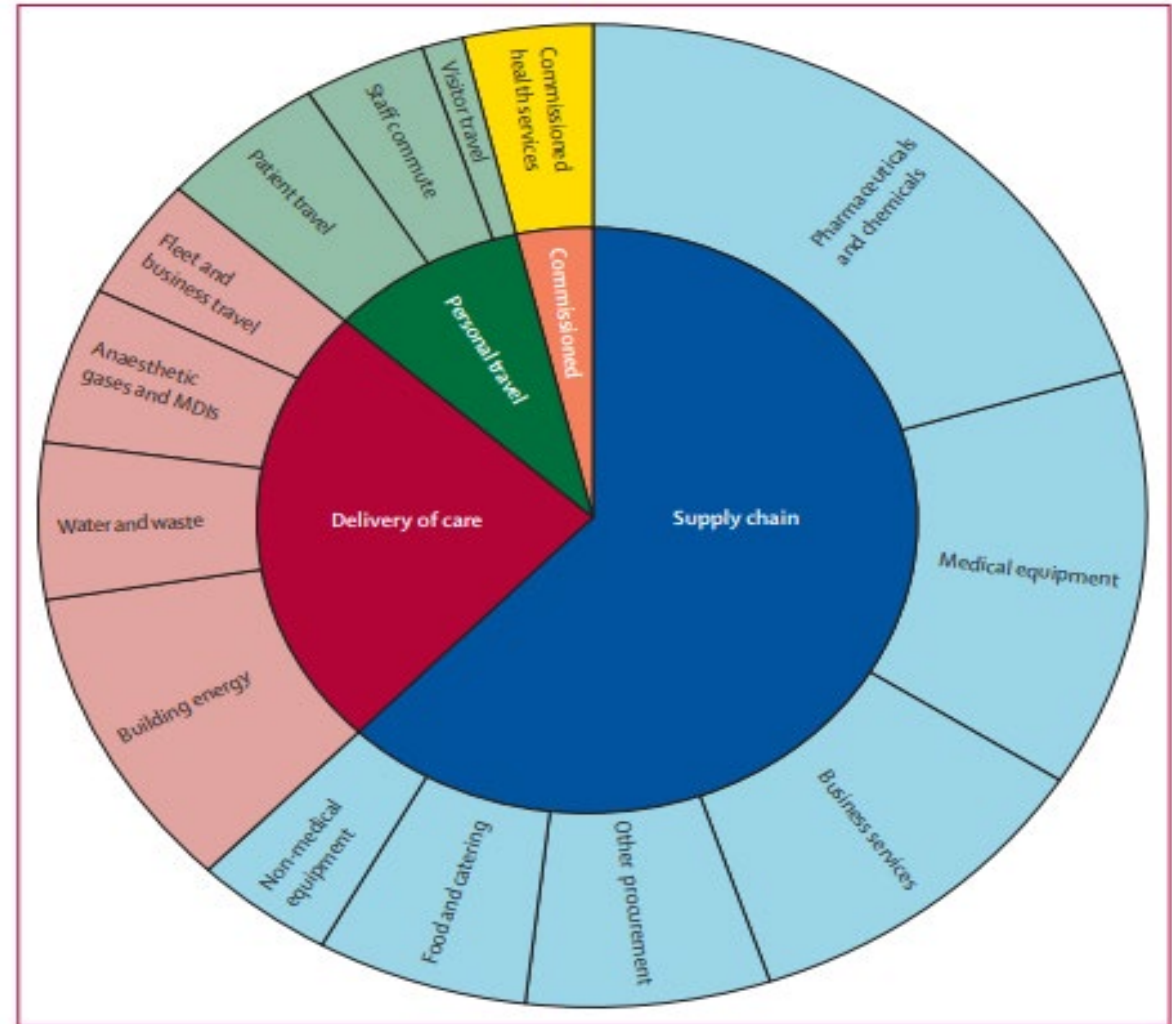
Promoting the health co-benefits of climate change mitigation in other sectors



World Health Organization

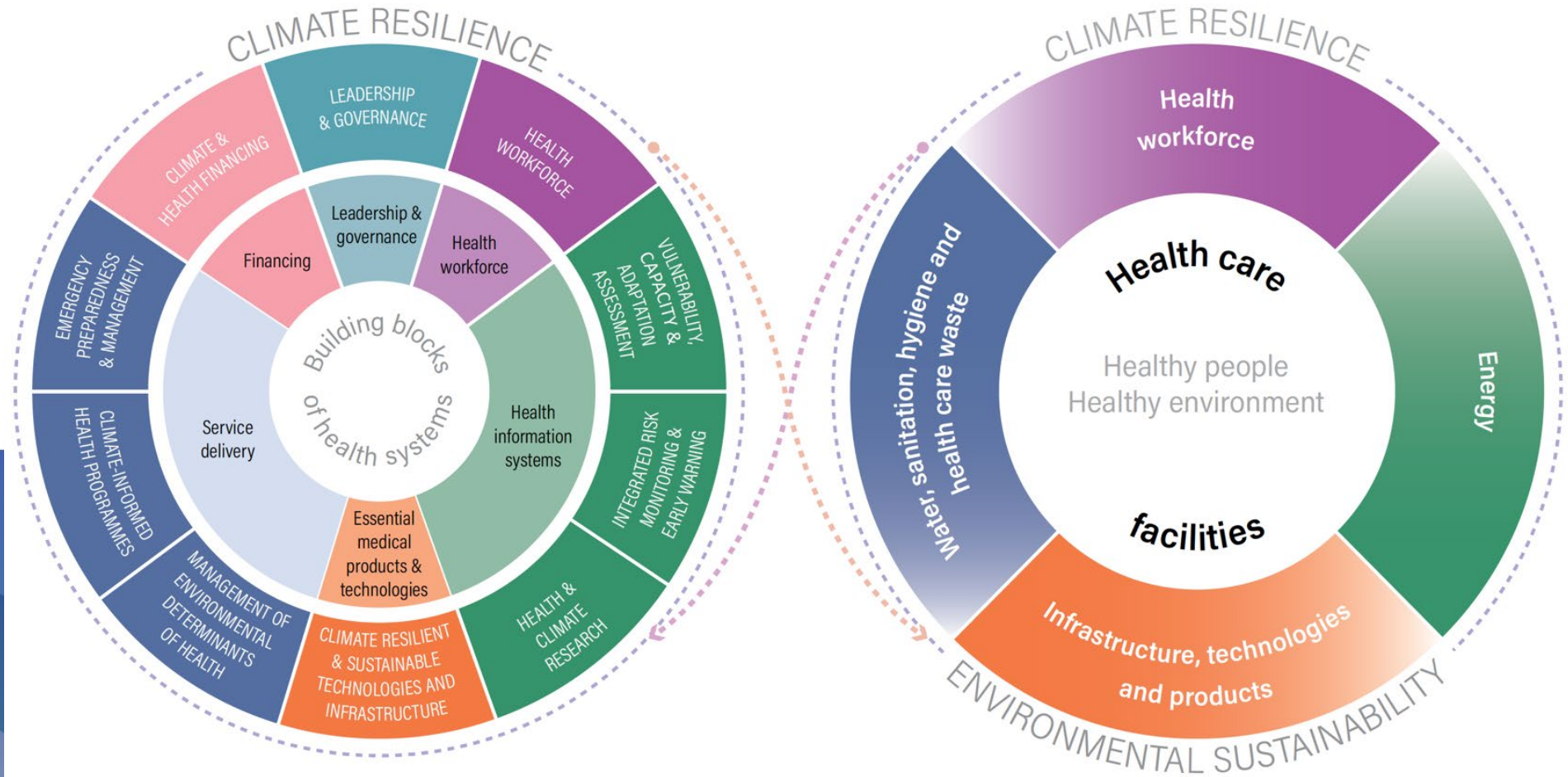
Health Care's Climate Footprint

- 4.4% of World's GHG emissions are from the Health care sector
- Emissions equal to over 500 coal gas fired thermal power plants
- Over 70% of the global climate footprint is from Supply chain procurement



Contribution of different sectors to the greenhouse gas emissions of the NHS England, 2019

Climate resilience and environmental sustainability in health care facilities



WHO GUIDANCE FOR
CLIMATE RESILIENT AND
ENVIRONMENTALLY SUSTAINABLE
HEALTH CARE FACILITIES



World Health
Organization

Climate-resilient health systems



Health Leadership in Emissions Reduction



Delivering a 'Net Zero' National Health Service



COP26

Health

Programme



Promoting healthy NDCs

Mobilizing health voices for climate action

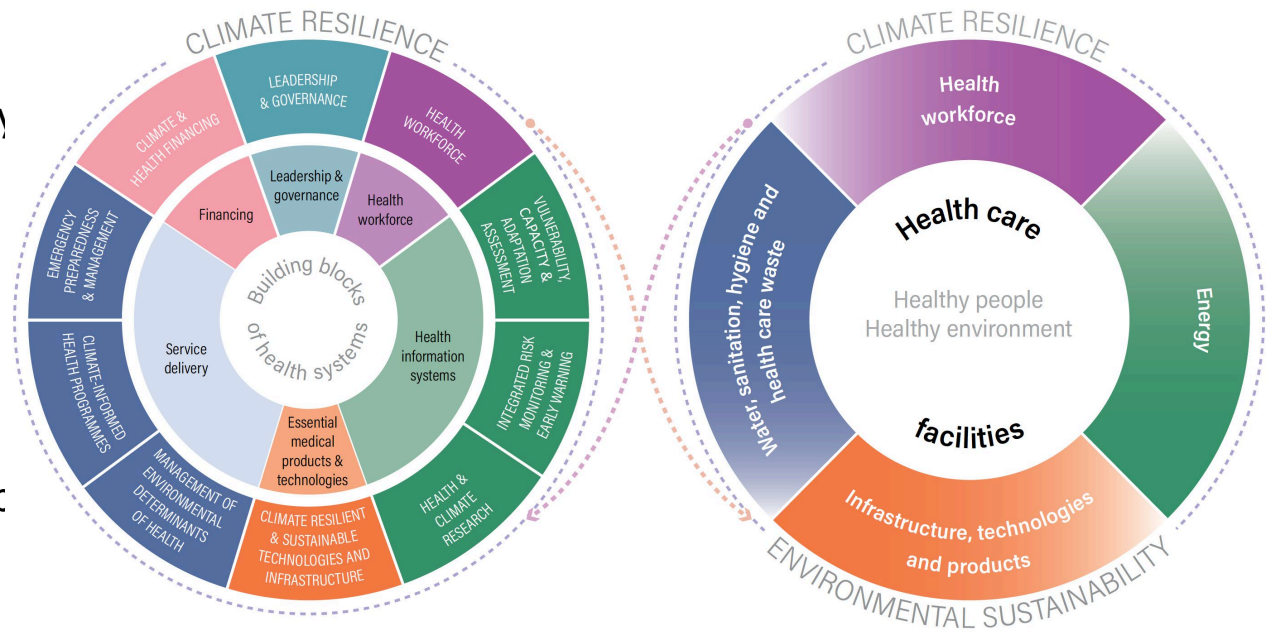
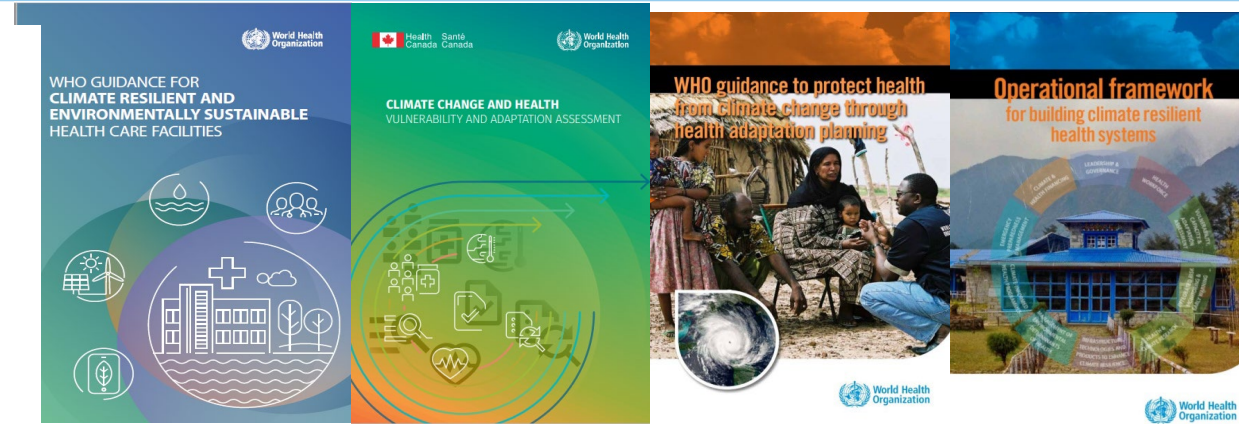


COP26 Health Commitments

COP26 Health Initiatives and Alliance on Transformative Action on Climate and Health (ATACH)

Countries commit to:

- Conduct climate change and health vulnerability and adaptation assessments (V&As) at population and/or HCF level;
- Develop a Health National Adaptation Plan (HNAP) informed by the V&A;
- Use the V&A and HNAP to facilitate health access to climate change funding;
- High ambition/high emitters: Commitment to set a target date by which to achieve health system net zero emissions (ideally by 2050).
- All countries: Commitment to deliver a baseline assessment of GHG emissions of the health system (including supply chains)
- All countries: Commitment to develop an action plan or roadmap by a set date to develop a sustainable low carbon health system.



Alliance for Transformative Action on Climate and Health (ATACH)

Objectives: support countries to make, and deliver on, ambitious commitments for climate resilience and health sector decarbonization; through advocacy, technical support, knowledge sharing, monitoring and access to financing.

Operating mechanisms:

- **Participants:** Countries, development agencies, technical experts and academia, UN Agencies, MDBs, NGOs
- **4 working groups:**
 - Climate Resilience
 - Decarbonization
 - Finance
 - Supply-chains



Implementation of COP26 Health Commitments

Operating mechanisms:

- **WHO as Secretariat** of the ATACH
- **Co-convened by the UNFCCC COP Presidencies – UK and Egypt**
- **Co-chairs for each WG**
- **Steering Group** – WHO Represented by HQ and 2 ROs on a rotating basis. Rest of ROs participate as observers.



ATACH Working Group (WG)	Proposed date/time first WG meetings	Country Chair	Technical Agency Chair	WHO Representation
Climate Resilient Health Systems	29 September 1-4pm CET	Ivory Coast	Health Canada (HC)	AFRO and PAHO
Low Carbon Sustainable Health Systems	6 October – 8am-11am CET	Fiji (TBC)	Health Care without Harm (HCWH)	WPRO
Supply Chains	3 November – 9am-12 CET	Maldives (TBC)	NHS England	SEARO and EURO
Financing the Health Commitments on Climate Resilient and Low Carbon Health Systems	Physical meeting at COP27 (Tentatively afternoon 8 November)	Sweden/SIDA (TBC)	World Bank (WB)	EURO

Thank you!!

[WHO Climate Change and Health website](#)

villalobose@who.int

