

# **SCORE for Health Data Technical Package**

**Mission Briefing I 27 August 2020**



**World Health  
Organization**



World Health  
Organization

**SCORE**  
to reach your health goals

## **SCORE for Health Data Technical Package**



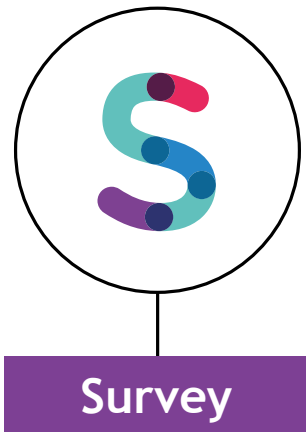
**Even before COVID-19, the world was off track for the SDGs ... but the challenges we face cannot be an excuse to abandon hope of achieving the Triple Billion targets or the SDGs.**

**We cannot make progress without measuring progress.**

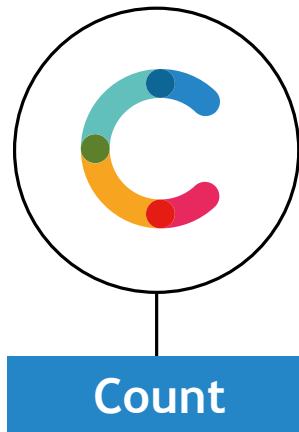
Dr Tedros  
WHO Director-General

# SCORE for Health Data Technical Package

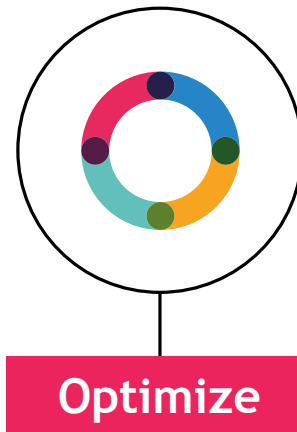
One-stop solution of effective tools and interventions to strengthen country health information systems, guide investments, and track progress towards the health-related SDGs and Triple Billion targets.



Populations and health risks



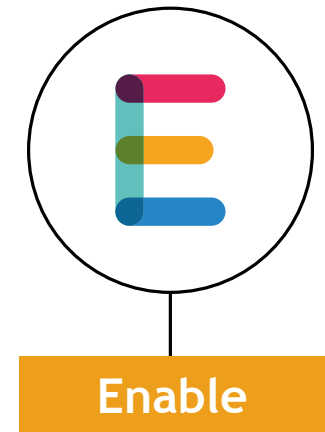
Births, deaths and causes of death



Health service data



Progress and performance



Data use for policy and action

*Score to reach your goals*



## Survey populations and health risks

Population-based assessments and surveillance systems are indispensable to identify risks and track health trends

### Key elements

- System of regular population-based health surveys
- Surveillance of public health threats
- Regular population census



# Survey populations and health risks

## Go.Data

- Tool designed for outbreak investigations (used for contact tracing, follow-up, etc.)
- Allows rapid data entry and visualization of transmission chains
- Runs in stand-alone or connected modes
- Allows access through mobile devices



## Overview

Population-based surveys are a cornerstone of public health.

Main data source to understand population health status and health risks.

Real-time public health surveillance is a critical intervention to identify and manage emerging threats.



## Count births, deaths and causes of death

Accurately counting births and deaths and systematically classifying causes of death are vital to every health system.

### Key elements

- Full birth and death registration
- Certification and reporting of causes of death



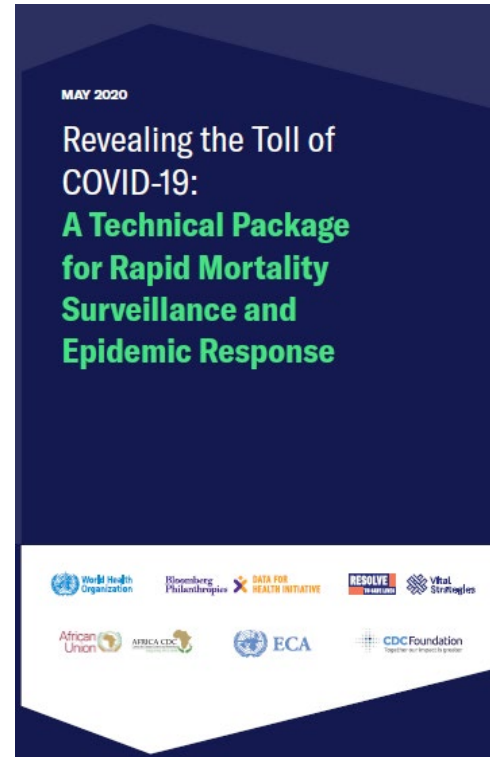
# Count births, deaths and causes of death

## Rapid Mortality Surveillance

- Provides a more complete picture of impact, particularly for deaths directly and indirectly related to COVID-19
- Tracks deaths that occur outside health facilities

## COVID-19 Mortality Reporting Platforms

- WHO weekly platform for countries to submit certified cause of death data



## Overview

Legal identity of births and deaths.

Counting deaths and classifying accurate causes of death are critical to track public health trends, plan interventions, investments and evaluate policies.

<https://www.who.int/publications/i/item/revealing-the-toll-of-covid-19>





## Optimize health service data

Health services data are an invaluable resource to assess quality of care and ensure equitable health services for all

### Key elements

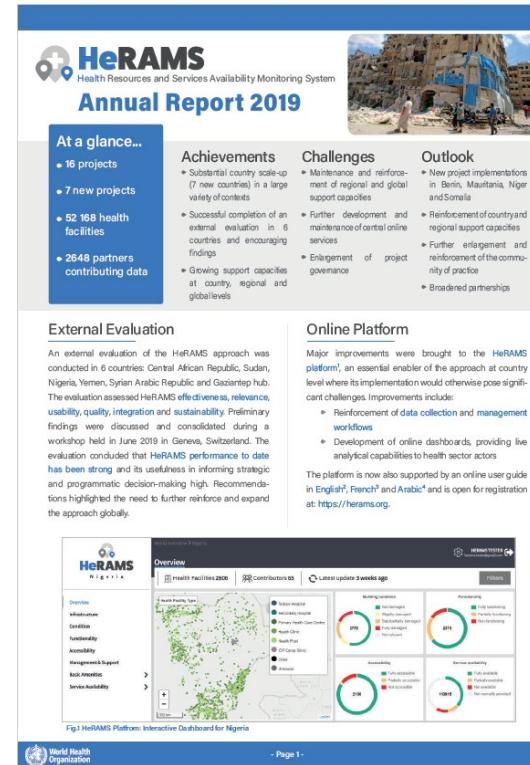
- Regular system to monitor service availability, quality and effectiveness
- Routine facility reporting system with patient and community monitoring
- Health service resources: health financing and health workforce



# Optimize health service data

## Health Resources and Services Availability Monitoring System (HeRAMS)

- Monitors health facilities, services and resource availability in emergencies
- Provides timely identification of needs and gaps to aid decision-making and planning



## Overview

Data generated from all levels of health facilities, including from primary care.

Includes routine facility and community reporting systems as well as health facility surveys.

<http://www.who.int/hac/herams/en/>



## Review progress and performance

National capacity to track performance is vital to make informed decisions and guide policy action

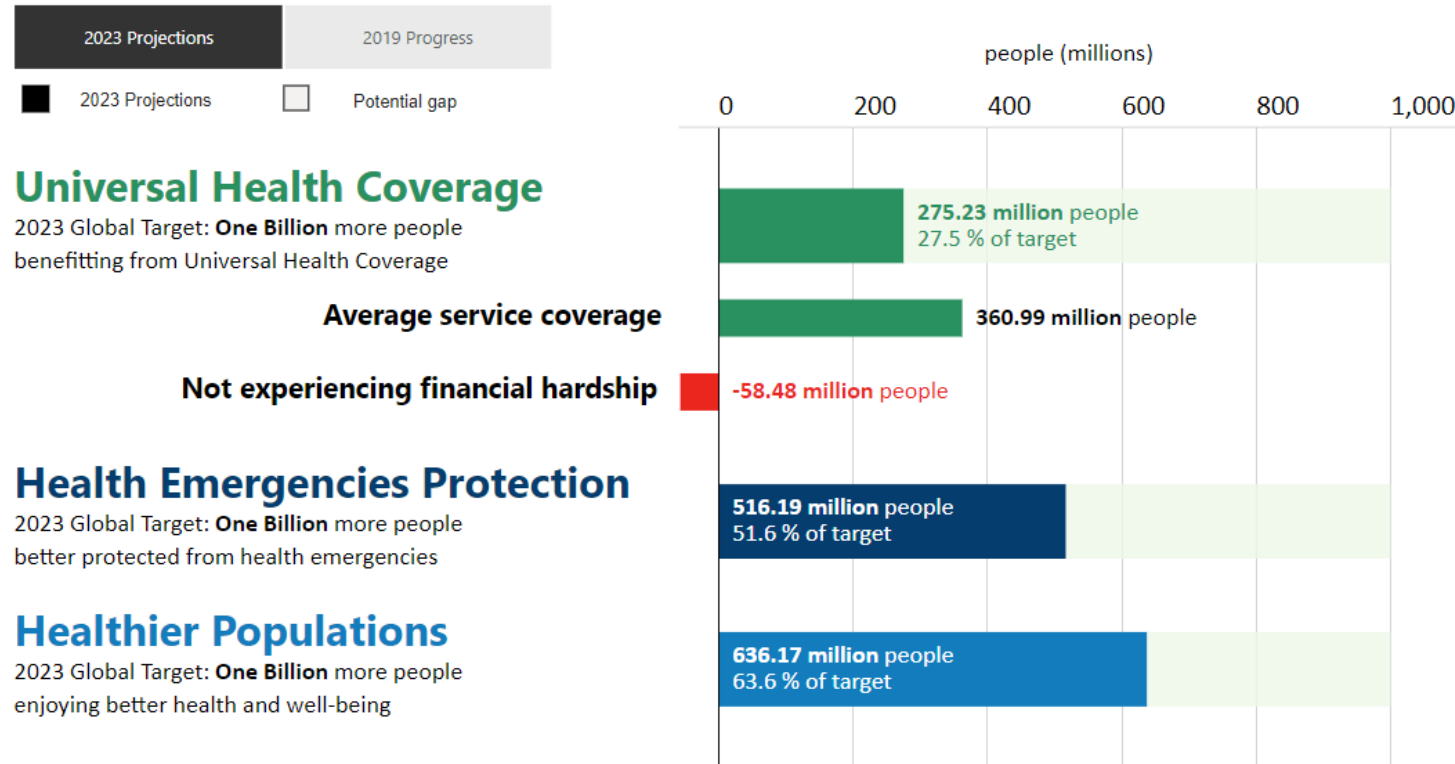
### Key elements

- Regular analytics reviews of progress and performance with a focus on equity
- Institutional capacity for analysis and learning



# Review progress and performance

## GPW 13 Triple Billion targets dashboard



### Overview

Review progress to deliver SDGs and Triple Billion targets.

Use data to improve health sector performance, scale successes and address challenges.

Assess equity dimensions and access to high-quality health services.



## Enable data use for policy and action

Effective use of evidence ensures accountability, transparency and policy action to deliver impact

### Key elements

- Data and evidence drive policy and planning
- Data access and sharing
- Country-led data governance



## Enable data use for policy and action

### Global and National Health Observatories

- WHO's official country-consulted health statistics
- Provides easy access to health-related data for 194 Member States with global, regional and country trends



### Delivering the Triple Billion targets

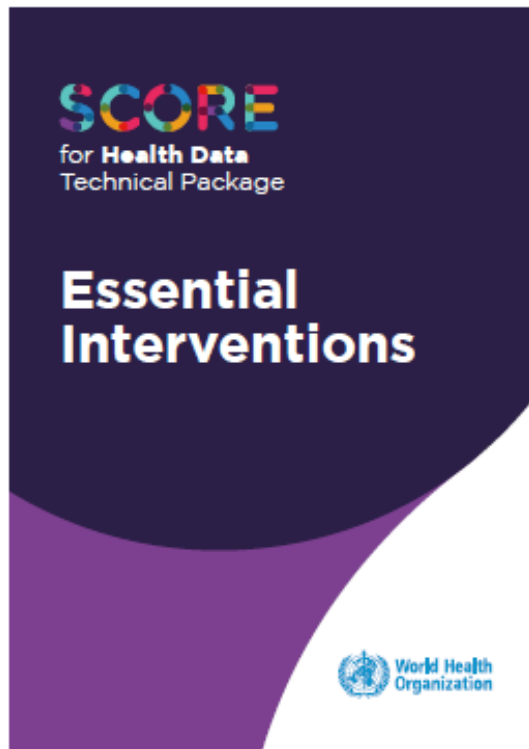
- Enable real-time progress tracking, active problem-solving, and knowledge sharing
- Empower countries with a common understanding of progress towards the health-related SDGs and Triple Billion targets

### Overview

Promote data governance, use and access.

Accessible, credible data from multiple sources for decision-makers and the public to improve public health and save lives.

# Launched today



# Forthcoming later this year



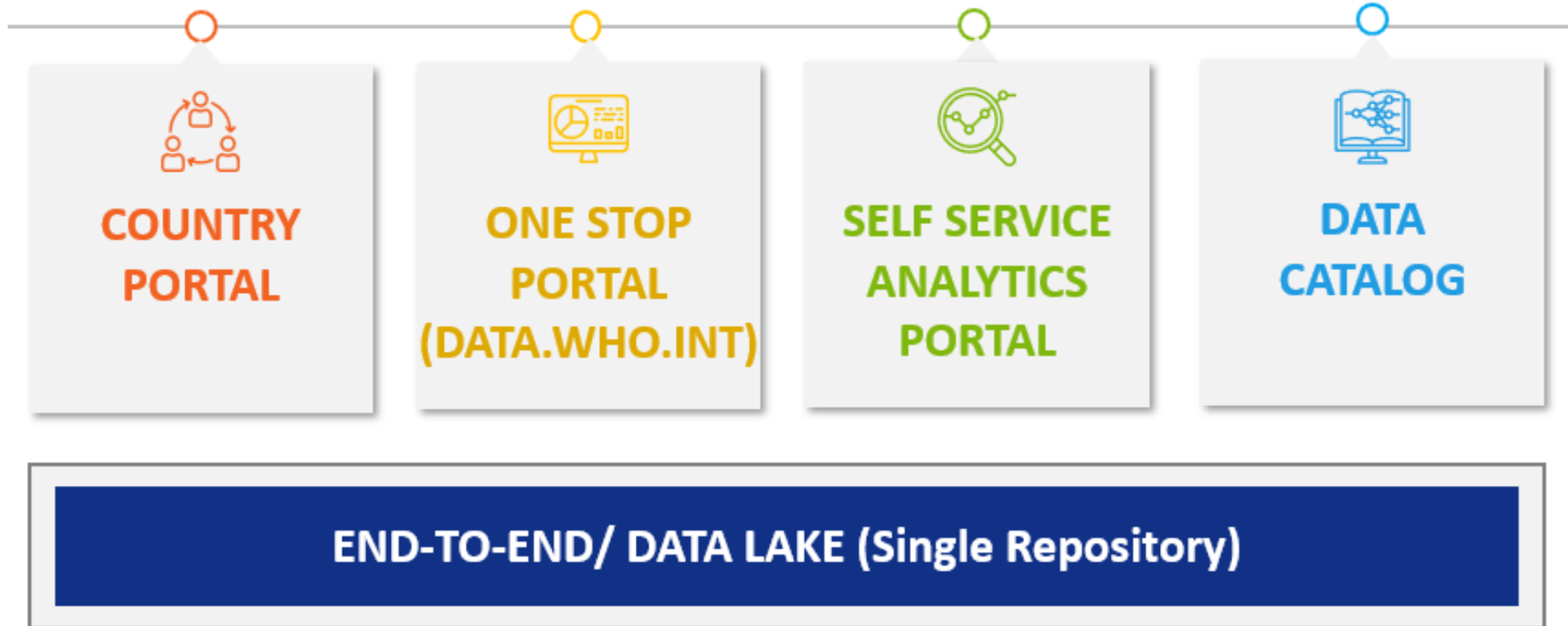
Learn more: <https://www.who.int/data/data-collection-tools/score>

# WHO is modernizing its end-to-end data systems and processes

## World Health Data Hub

### Our roadmap

Solutions to address the needs of Member States, Partners and WHO







World Health  
Organization

SCORE

to reach your health goals

WHO thanks all Member States & partners  
for bringing this package to fruition

WHO Division of Data, Analytics and Delivery for Impact  
<https://www.who.int/data/ddi>