

A microscopic view of several COVID-19 virus particles, showing their characteristic spherical shape and surface covered in small, rounded protrusions (spikes). The particles are rendered in shades of blue and white, with a soft, ethereal glow. They are scattered across the upper half of the image, with a larger, more detailed particle in the center-right.

COVID-19 Pandemic

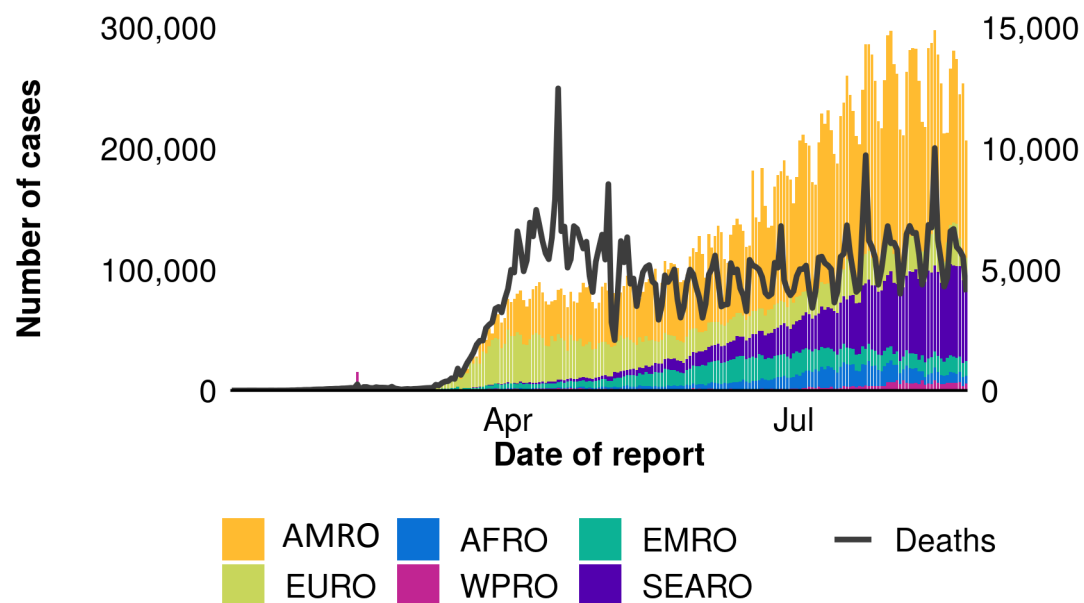
Member States Information Session

27 August 2020

Global Situation

(as of 25 August 10H CEST)

- **Previous 24 hours:**
 - 206,382 new confirmed cases.
 - 4,056 new deaths.
- **Cumulative:**
 - 23,518,343 confirmed cases.
 - 810,492 deaths.

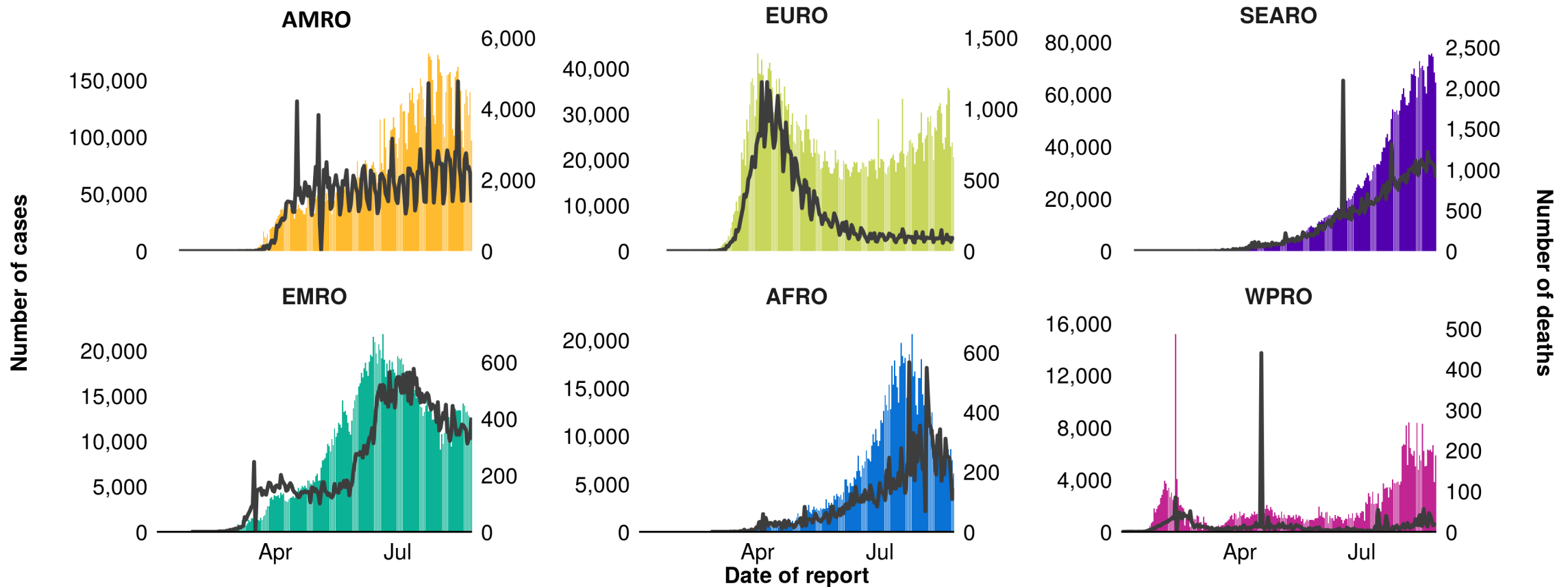


Countries with the highest number of new cases in previous 24 hours

Country	New Cases	Total Cases	New Deaths	Total Deaths
India	60,975	3,167,323	848	58,390
United States of America	37,765	5,649,928	570	175,813
Brazil	23,421	3,605,783	494	114,744
Peru	9,090	594,326	210	27,663
Colombia	8,044	541,147	348	17,316
Argentina	5,352	342,154	132	7,079
Russian Federation	4,696	966,189	120	16,568
Philippines	4,651	194,252	12	3,010
Mexico	3,948	560,164	226	60,480
Iraq	3,644	207,985	91	6,519

Epidemic curve by region

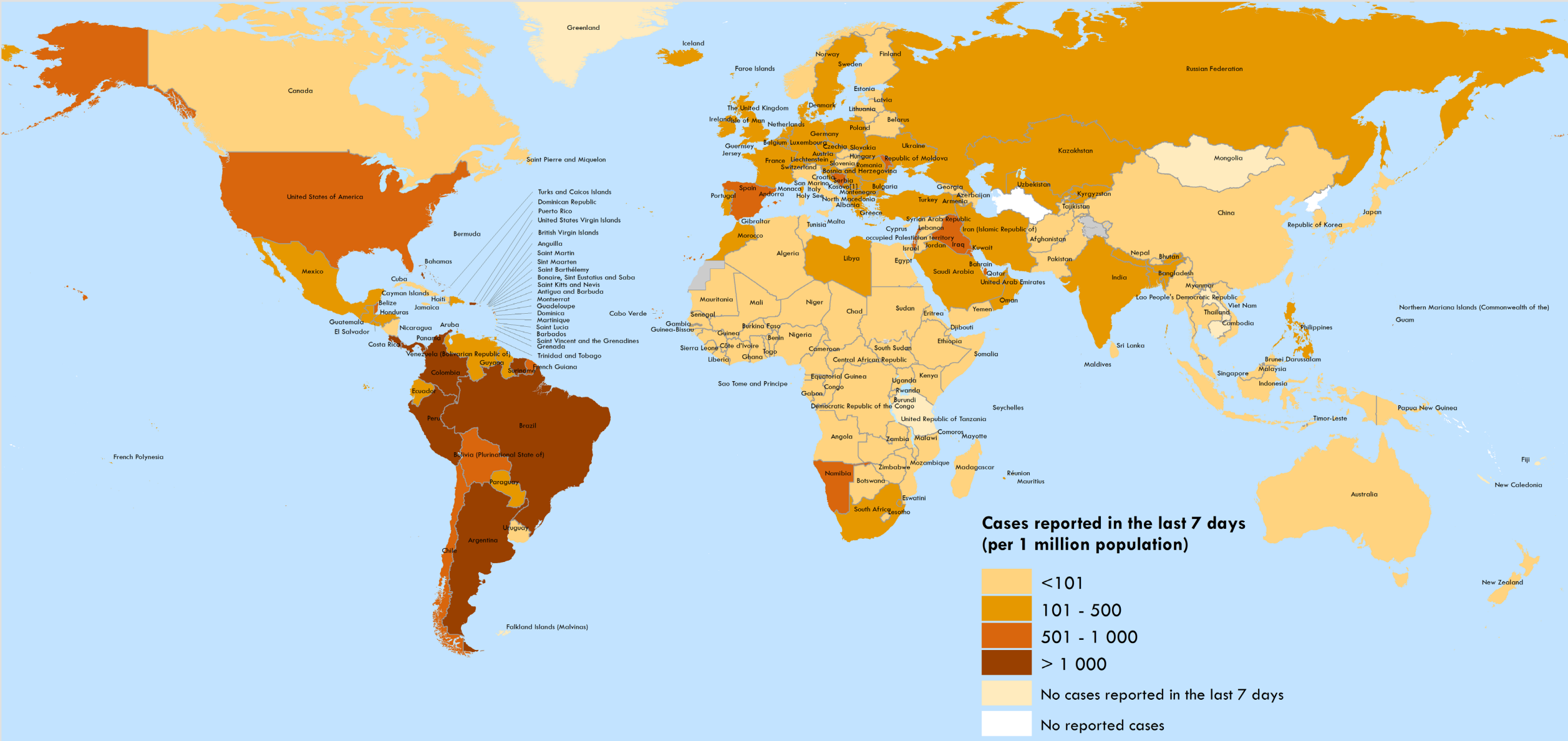
(as of 25 August 10H CEST)



Cases depicted by bars; deaths depicted by line. Note different scales for y-axes.

COVID-19 cases reported in the last 7 days per 1 million population

(from 17 August 2020, 10:00AM to 23 August 2020, 10:00AM (CEST))



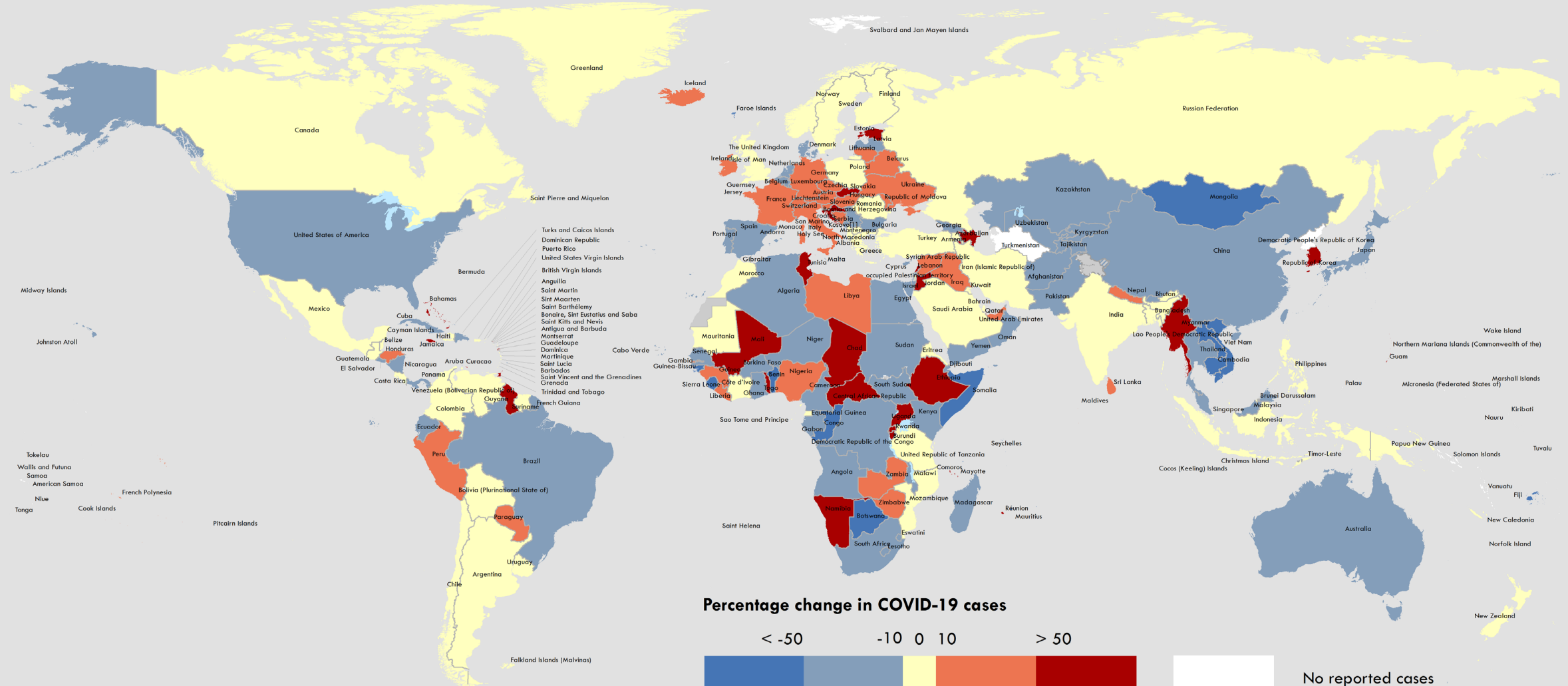
Data Source: World Health Organization, United Nations Population Division (population prospect 2020)
Map Production: WHO Health Emergencies Programme

Not applicable

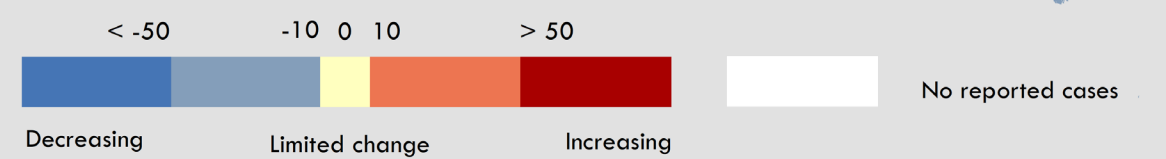
0 2,500 5,000 km
 © World Health Organization 2020, All rights reserved.

The boundaries and names shown and the designations used on this map do not imply the expression of any opinion whatsoever on the part of the World Health Organization concerning the legal status of any country, territory, city or area or of its authorities, or concerning the delimitation of its frontiers or boundaries. Dotted and dashed lines on maps represent approximate border lines for which there may not yet be full agreement. [1] All references to Kosovo in this document should be understood to be in the context of the United Nations Security Council resolution 1244 (1999). Number of cases of Serbia and Kosovo (UNSCR 1244, 1999) have been aggregated for visualization purposes.

Percentage change in COVID-19 cases over the last seven days relative to the previous seven days (as of 23 August 2020 10:00AM CEST)



Percentage change in COVID-19 cases



Data Source: World Health Organization
 Map Production: WHO Health Emergencies Programme

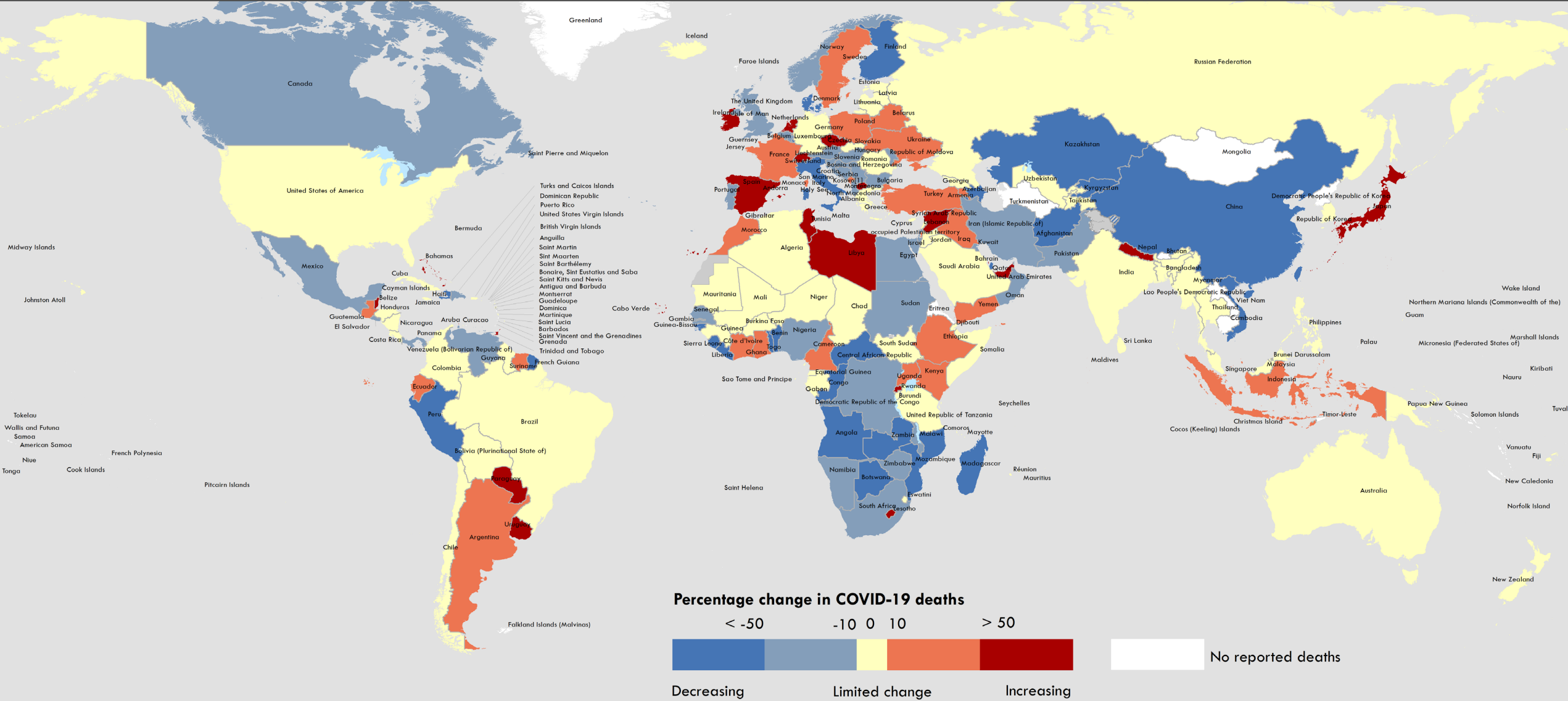
Not applicable



© World Health Organization 2020, All rights reserved.

The boundaries and names shown and the designations used on this map do not imply the expression of any opinion whatsoever on the part of the World Health Organization concerning the legal status of any country, territory, city or area or of its authorities, or concerning the delimitation of its frontiers or boundaries. Dotted and dashed lines on maps represent approximate border lines for which there may not yet be full agreement. [1] All references to Kosovo in this document should be understood to be in the context of the United Nations Security Council resolution 1244 (1999). Number of cases of Serbia and Kosovo (UNSCR 1244, 1999) have been aggregated for visualization purposes.

Percentage change in COVID-19 deaths over the last seven days relative to the previous seven days (as of 23 August 2020 10:00AM CEST)



Data Source: World Health Organization
 Map Production: WHO Health Emergencies Programme

Not applicable

0 2,500 5,000 km
 © World Health Organization 2020, All rights reserved.

The boundaries and names shown and the designations used on this map do not imply the expression of any opinion whatsoever on the part of the World Health Organization concerning the legal status of any country, territory, city or area or of its authorities, or concerning the delimitation of its frontiers or boundaries. Dotted and dashed lines on maps represent approximate border lines for which there may not yet be full agreement. [1] All references to Kosovo in this document should be understood to be in the context of the United Nations Security Council resolution 1244 (1999). Number of deaths of Serbia and Kosovo (UNSCR 1244, 1999) have been aggregated for visualization purposes.