

# SITUATION UPDATE: COVID-19

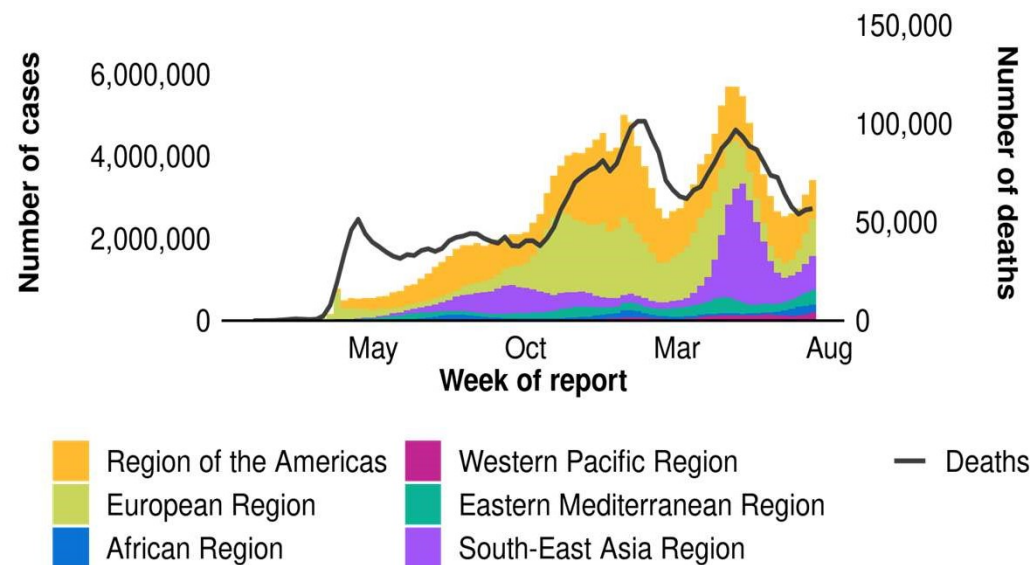


HEALTH  
**EMERGENCIES**  
programme

# Global Situation: Weekly Overview

(as of 19 July 10H CEST)

- **Previous week (12 to 18 June):**
  - 3,429,645 new confirmed cases.
  - 56,767 new deaths.
- **Cumulative (as of 19 July):**
  - 190,597,409 confirmed cases.
  - 4,093,145 deaths



\* Data are incomplete for the current week. Cases depicted by bars; deaths depicted by line.

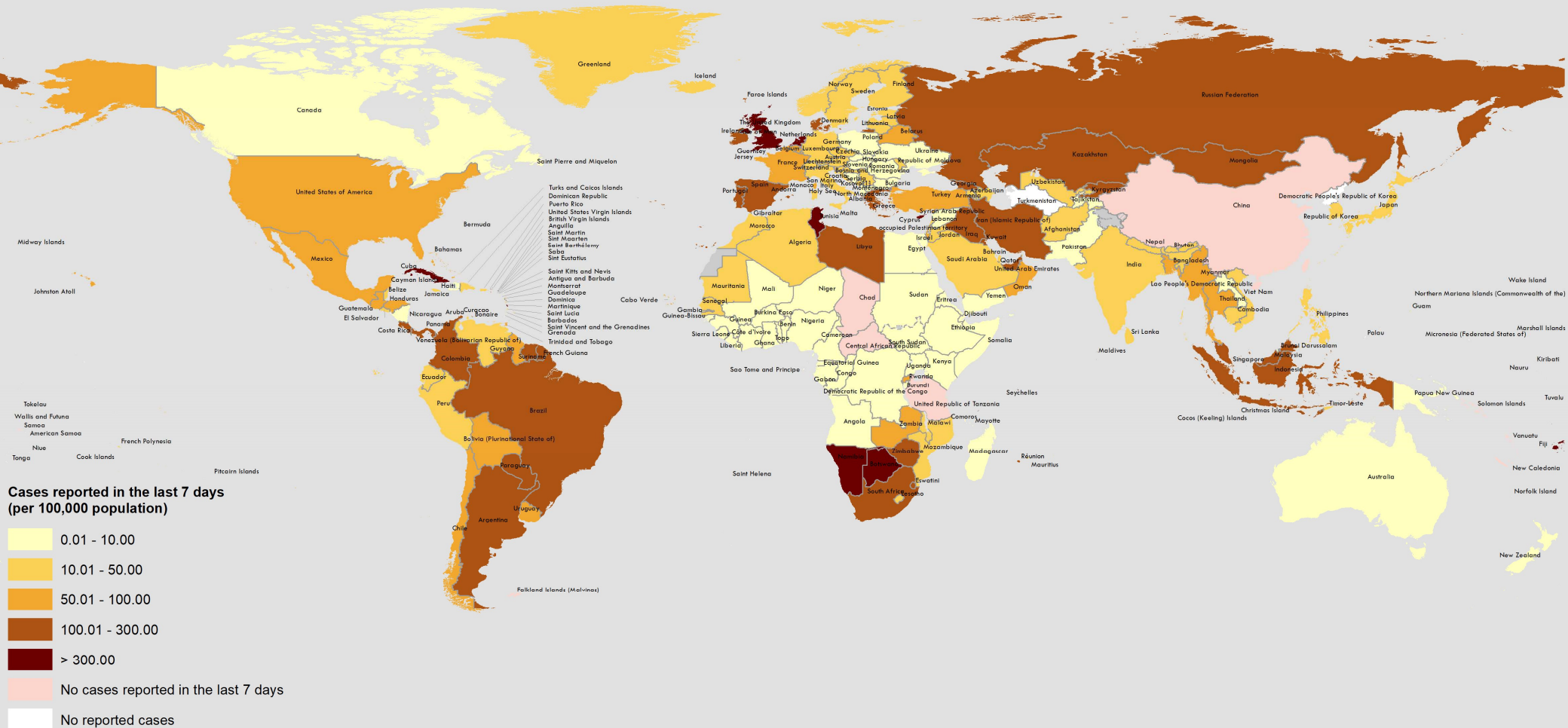
## Countries with the highest number of new cases in past week (wk28/2021)

Country	New Cases	New Cases per 1M Pop	Total Cases	Total Cases per 1M Pop
Indonesia	350,273	1,281	2,877,476	10,520
United Kingdom	296,447	4,367	5,386,344	79,344
Brazil	287,610	1,353	19,308,109	90,836
India	268,843	195	31,106,065	22,541
United States of America	216,433	654	33,723,155	101,882
Russian Federation	174,800	1,198	5,958,133	40,827
Iran (Islamic Republic of)	145,293	1,730	3,501,079	41,683
Colombia	129,713	2,549	4,601,335	90,430
South Africa	104,583	1,763	2,283,880	38,508
Argentina	104,335	2,309	4,737,213	104,815

Trend line shown for the past 19 months

# COVID-19 cases reported in the last 7 days per 100,000 population

(from 12 July 2021, 10:00AM to 18 July 2021, 10:00AM (CEST))



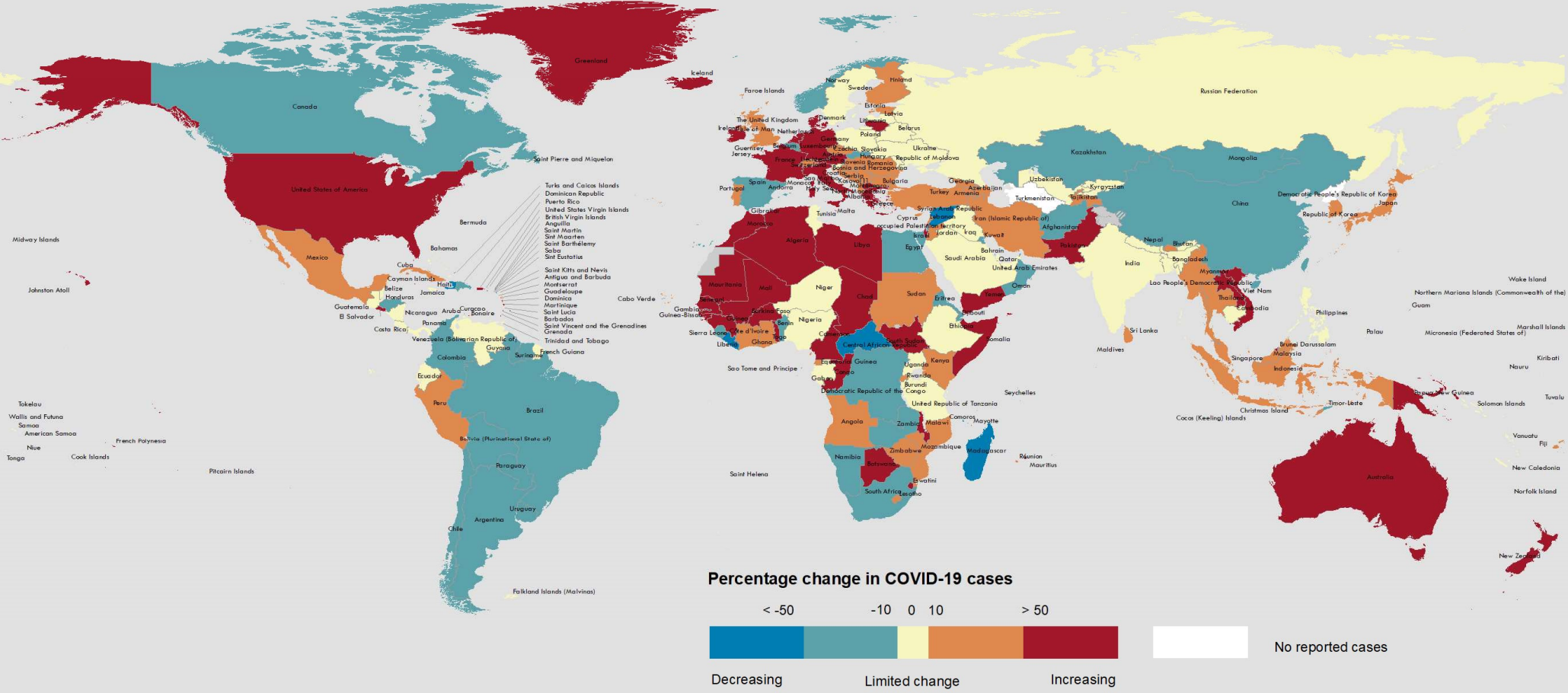
**Data Source:** World Health Organization  
 United Nations Population Division (Population prospect 2020)  
**Map Production:** WHO Health Emergencies Programme



© World Health Organization 2021. All rights reserved.

The designations employed and the presentation of the material in this publication do not imply the expression of any opinion whatsoever on the part of WHO concerning the legal status of any country, territory, city or area or of its authorities, or concerning the delimitation of its frontiers or boundaries. Dotted and dashed lines on maps represent approximate border lines for which there may not yet be full agreement. [1] All references to Kosovo in this document should be understood to be in the context of the United Nations Security Council resolution 1244 (1999). Number of cases of Serbia and Kosovo (UNSCR 1244, 1999) have been aggregated for visualization purposes. Data for Bonaire, Sint Eustatius and Saba have been disaggregated and displayed at the subnational level.

# Percentage change in COVID-19 cases over the last seven days relative to the previous seven days (as of 18 July 2021 10:00AM CEST)



Data Source: World Health Organization  
 Map Production: WHO Health Emergencies Programme



The designations employed and the presentation of the material in this publication do not imply the expression of any opinion whatsoever on the part of WHO concerning the legal status of any country, territory, city or area or of its authorities, or concerning the delimitation of its frontiers or boundaries. Dotted and dashed lines on maps represent approximate border lines for which there may not yet be full agreement. [1] All references to Kosovo in this document should be understood to be in the context of the United Nations Security Council resolution 1244 (1999). Number of cases of Serbia and Kosovo (UNSCR 1244, 1999) have been aggregated for visualization purposes. Data for Bonaire, Sint Eustatius and Saba have been disaggregated and displayed at the subnational level.

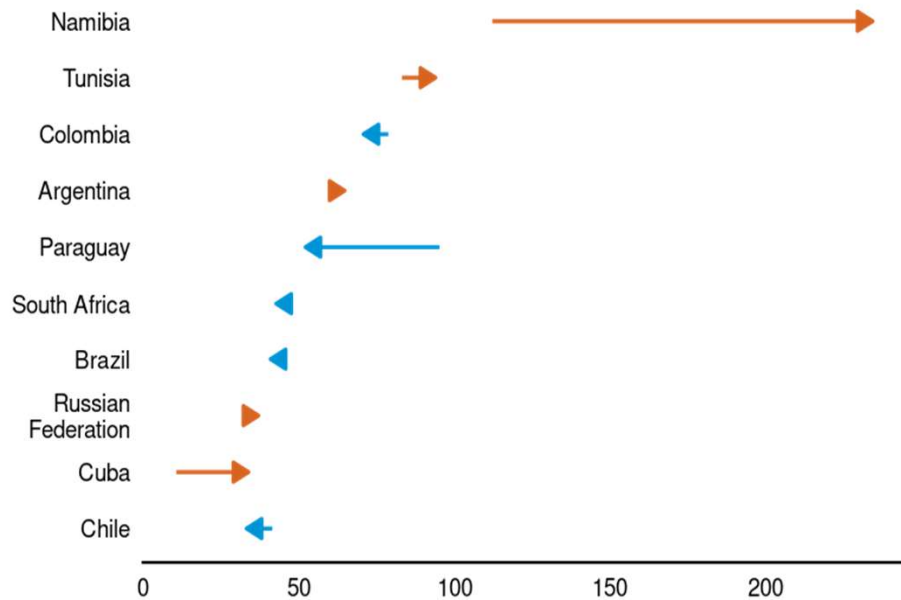


# Global Situation: Weekly Overview - Mortality

for countries with highest number of new deaths per 1M population in the past week, excluding countries with <2M population  
(as of 19 July 10H CEST)

## Change in 7-day New Deaths per 1M Population

Week 28 (12 Jul - 18 Jul) vs. Week 27 (05 Jul - 11 Jul)



## Change in 7-day New Deaths per 1M Population

Change • No change → Increasing → Decreasing

Source: COVID Intel Database

## Countries with the highest mortality rate in past week (wk28/2021)

Country	New Deaths	New Deaths per 1M Pop	Total Deaths	Total Deaths per 1M Pop
Namibia	595	234	2,506	986
Tunisia	1,110	94	17,354	1,468
Colombia	3,602	71	115,333	2,267
Argentina	2,927	65	101,158	2,238
Paraguay	372	52	14,178	1,988
South Africa	2,538	43	66,676	1,124
Brazil	8,710	41	540,398	2,542
Russian Federation	5,417	37	148,419	1,017
Cuba	384	34	1,843	163
Chile	636	33	34,403	1,800

# COVID-19 deaths reported in the last 7 days per 100,000 population

(From 12 July 2021, 10:00AM to 18 July 2021, 10:00AM (CEST))



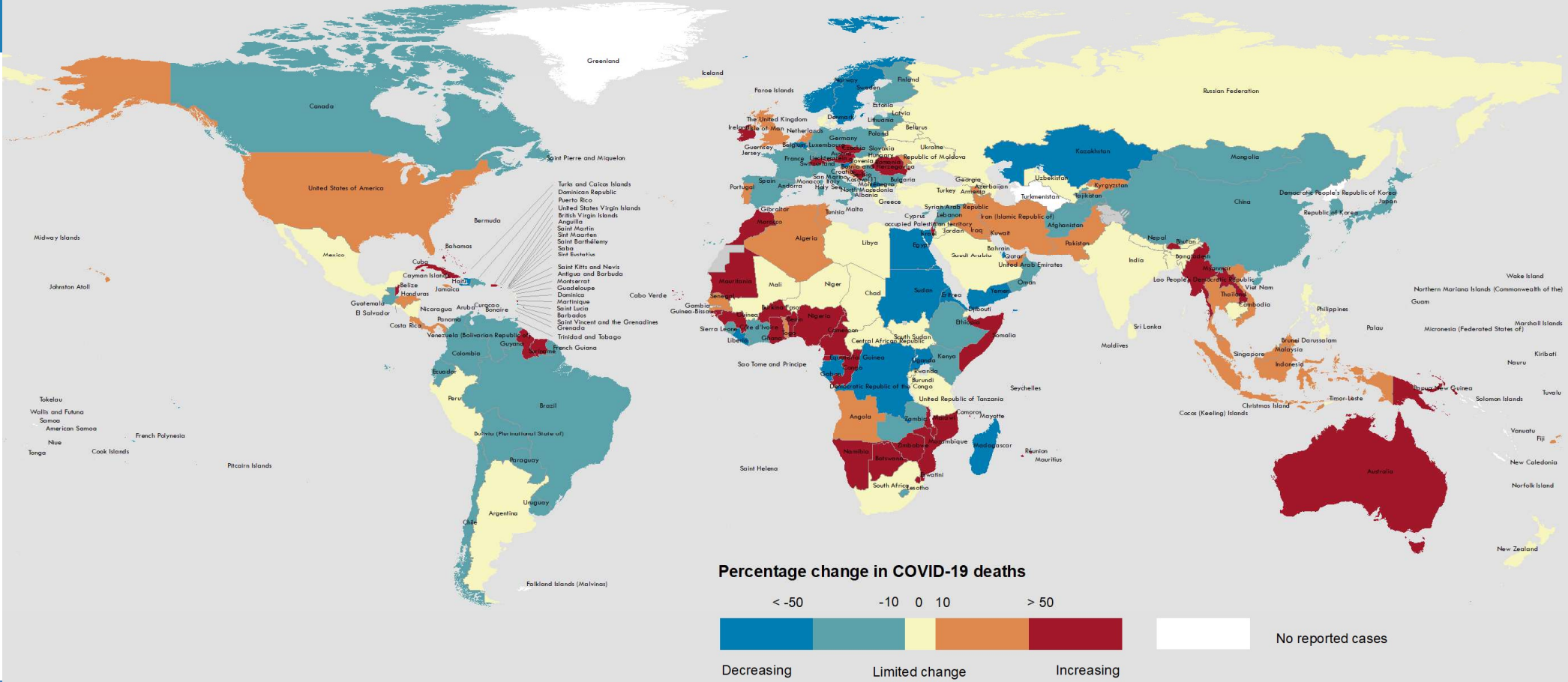
**Data Source:** World Health Organization  
 United Nations Population Division (Population prospect 2020)  
**Map Production:** WHO Health Emergencies Programme



© World Health Organization 2021, All rights reserved.

The designations employed and the presentation of the material in this publication do not imply the expression of any opinion whatsoever on the part of WHO concerning the legal status of any country, territory, city or area or of its authorities, or concerning the delimitation of its frontiers or boundaries. Dotted and dashed lines on maps represent approximate border lines for which there may not yet be full agreement. [1] All references to Kosovo in this document should be understood to be in the context of the United Nations Security Council resolution 1244 (1999). Number of cases of Serbia and Kosovo (UNSCR 1244, 1999) have been aggregated for visualization purposes. Data for Bonaire, Sint Eustatius and Saba have been disaggregated and displayed at the subnational level.

# Percentage change in COVID-19 deaths over the last seven days relative to the previous seven days (as of 18 July 2021 10:00AM CEST)



Data Source: World Health Organization  
 Map Production: WHO Health Emergencies Programme



The designations employed and the presentation of the material in this publication do not imply the expression of any opinion whatsoever on the part of WHO concerning the legal status of any country, territory, city or area or of its authorities, or concerning the delimitation of its frontiers or boundaries. Dotted and dashed lines on maps represent approximate border lines for which there may not yet be full agreement. [1] All references to Kosovo in this document should be understood to be in the context of the United Nations Security Council resolution 1244 (1999). Number of cases of Serbia and Kosovo (UNSCR 1244, 1999) have been aggregated for visualization purposes. Data for Bonaire, Sint Eustatius and Saba have been disaggregated and displayed at the subnational level.

# Change in cases and deaths in the last 7 days

(as of 18 July 10H CEST)

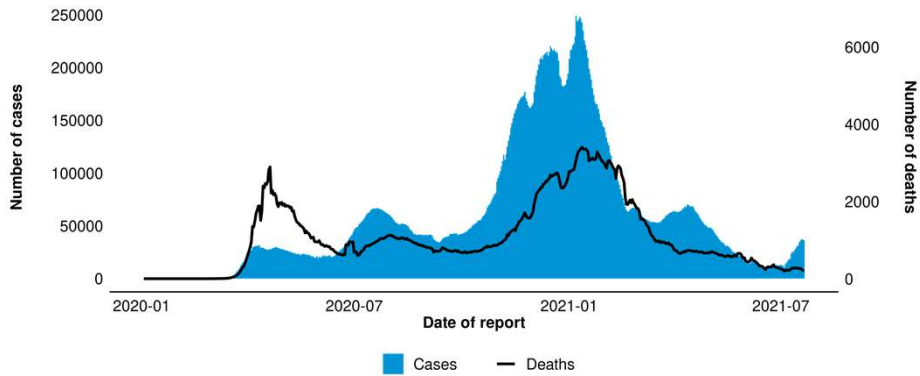
WHO Region	New cases in the last 7 days (%)	Change in new cases in last 7 days *	Cumulative cases (%)	New deaths in last 7 days (%)	Change in new deaths in last 7 days *	Cumulative deaths (%)
Africa	202,801 (5.91%)	-5.1%	4,589,220 (2.41%)	4,817 (8.5%)	-3.9%	107,498 (2.6%)
Eastern Mediterranean	354,030 (10.32%)	15.3%	11,794,433 (6.20%)	3,875 (6.8%)	4.2%	226,399 (5.5%)
Europe	885,048 (25.81%)	21.2%	58,319,701 (30.67%)	7,173 (12.6%)	-0.1%	1,204,780 (29.5%)
Americas	967,205 (28.20%)	0.5%	74,734,644 (39.30%)	22,411 (39.5%)	-5.6%	1,960,619 (48.0%)
South-East Asia	829,552 (24.19%)	16.5%	36,760,906 (19.33%)	16,403 (28.9%)	12.3%	526,942 (12.9%)
Western Pacific	191,009 (5.57%)	29.5%	3,970,165 (2.09%)	2,088 (3.7%)	10.1%	59,749 (1.5%)
Global	3,429,645 (100%)	11.6%	190,169,833 (100%)	56,767 (100%)	1.1%	4,086,000 (100%)



# Vaccination leading to decoupling of cases and deaths

## United States of America

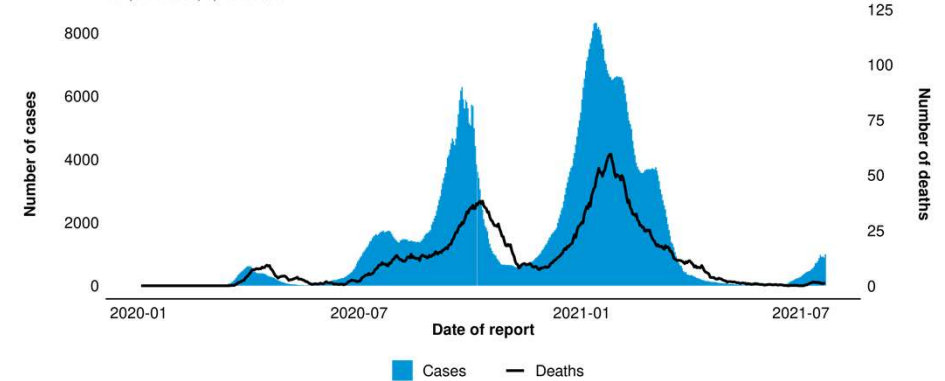
33,828,878 cases, 604,252 deaths



*cases smoothed by 7-day moving avg*

## Israel

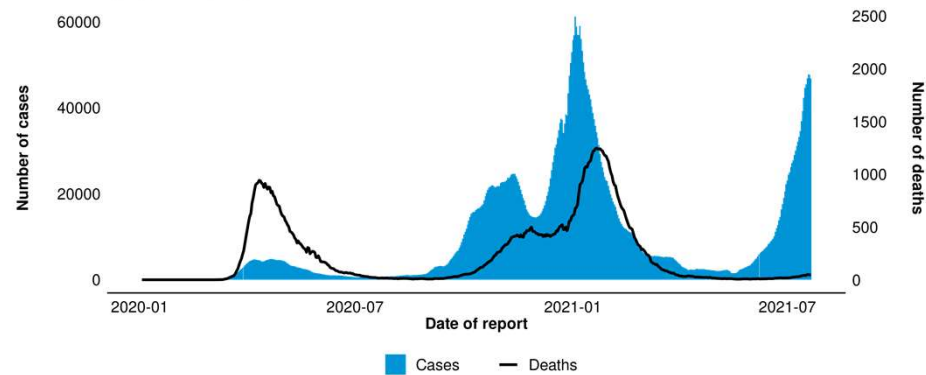
854,981 cases, 6,452 deaths



*cases smoothed by 7-day moving avg*

## United Kingdom

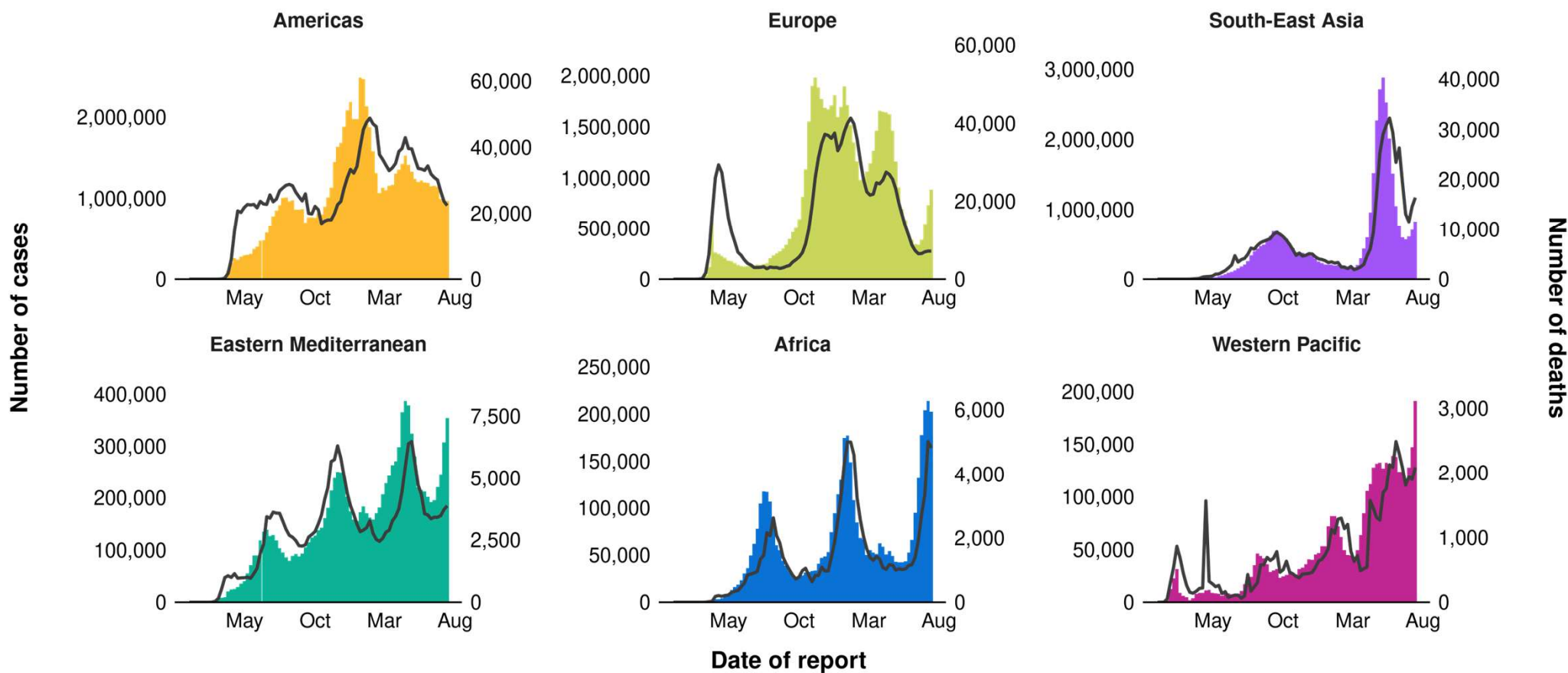
5,519,606 cases, 128,823 deaths



*cases smoothed by 7-day moving avg*

# Weekly situation by WHO region

(as of 19 July 10H CEST)



\* Data are incomplete for the current week. Cases depicted by bars; deaths depicted by line. Note different scales for y-axes.