

A world map in shades of blue with a network of white lines and nodes overlaid. The text 'COVID-19' is written in large, bold, red letters across the top. The letter 'O' is replaced by a red icon of a coronavirus particle. A yellow rectangular box highlights the Maldives region in the Indian Ocean, with a black arrow pointing towards it from the left.

**COVID-19**

# **MALDIVES RESPONSE**

# Maldives Profile



## Population

680,000

## Inhabited Islands

188

## Islands <1,000 pop

116

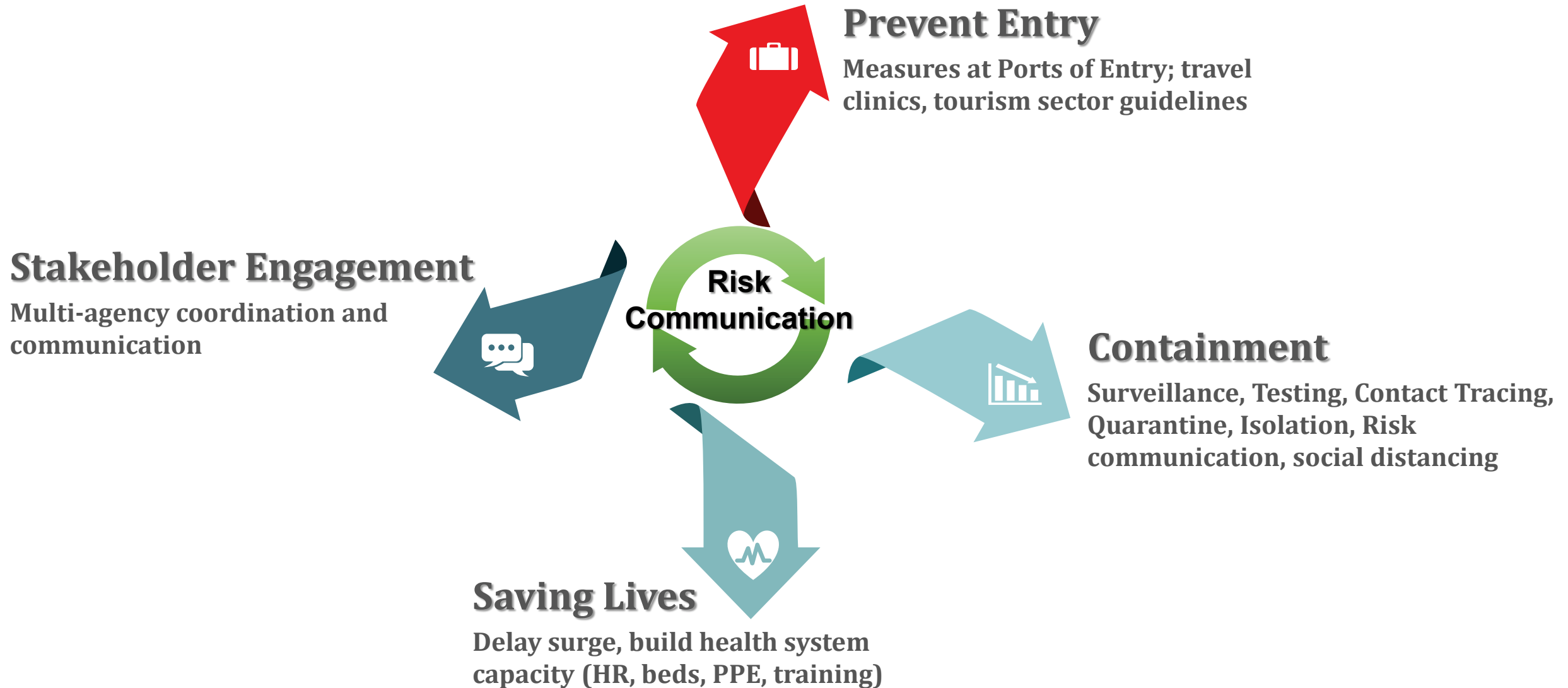
## Male' Population Density

27,000/sq. km

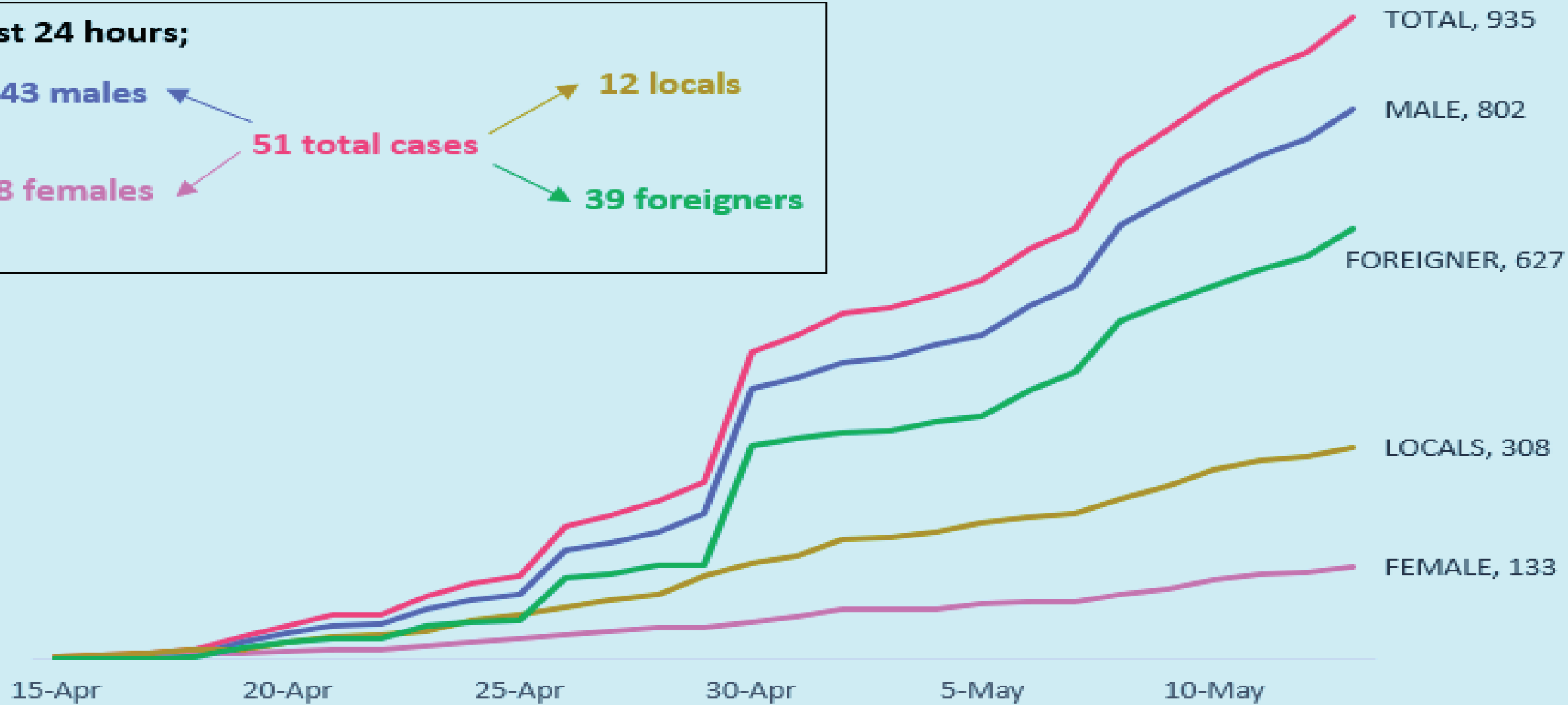
## Tourism

2/3<sup>rd</sup> of GDP

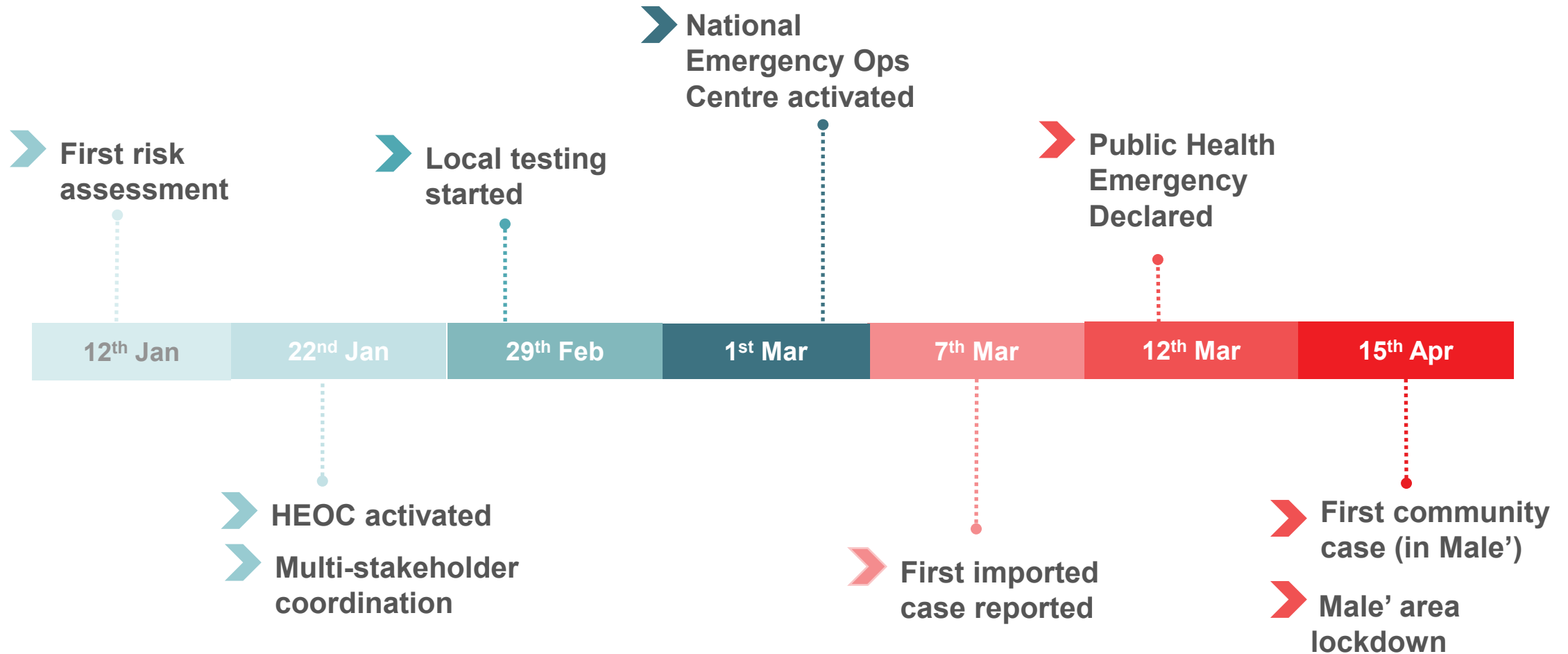
# STRATEGY



CUMULATIVE POSITIVE CASES AS OF 13th May 2020, 23:59 hours  
- INCLUDES ONLY CLUSTER TRANSMISSION CASES (based on reported date)



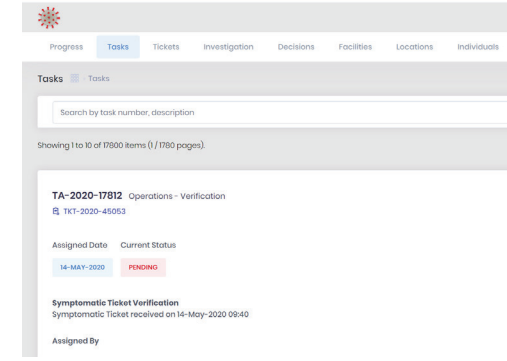
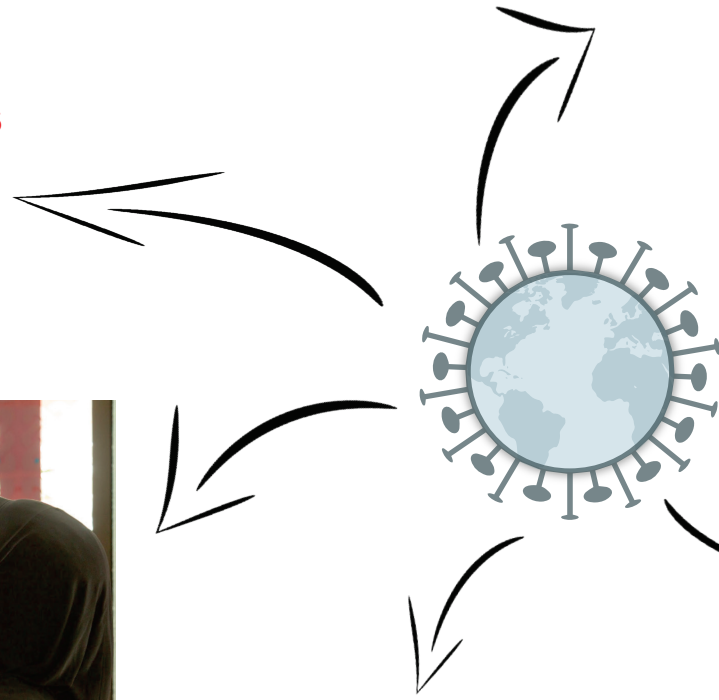
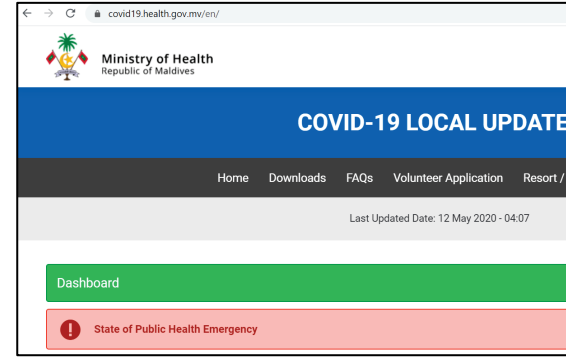
# TIMELINE



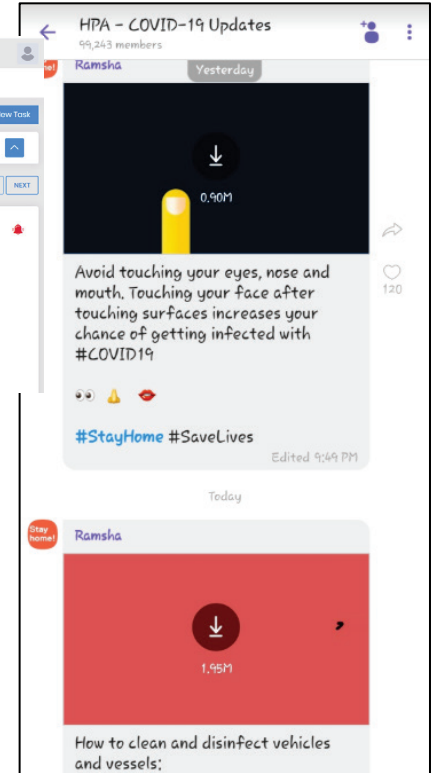


**Re-purposing resorts into quarantine facilities**

**Risk-communication and continuous community engagement**



**Use of technology**

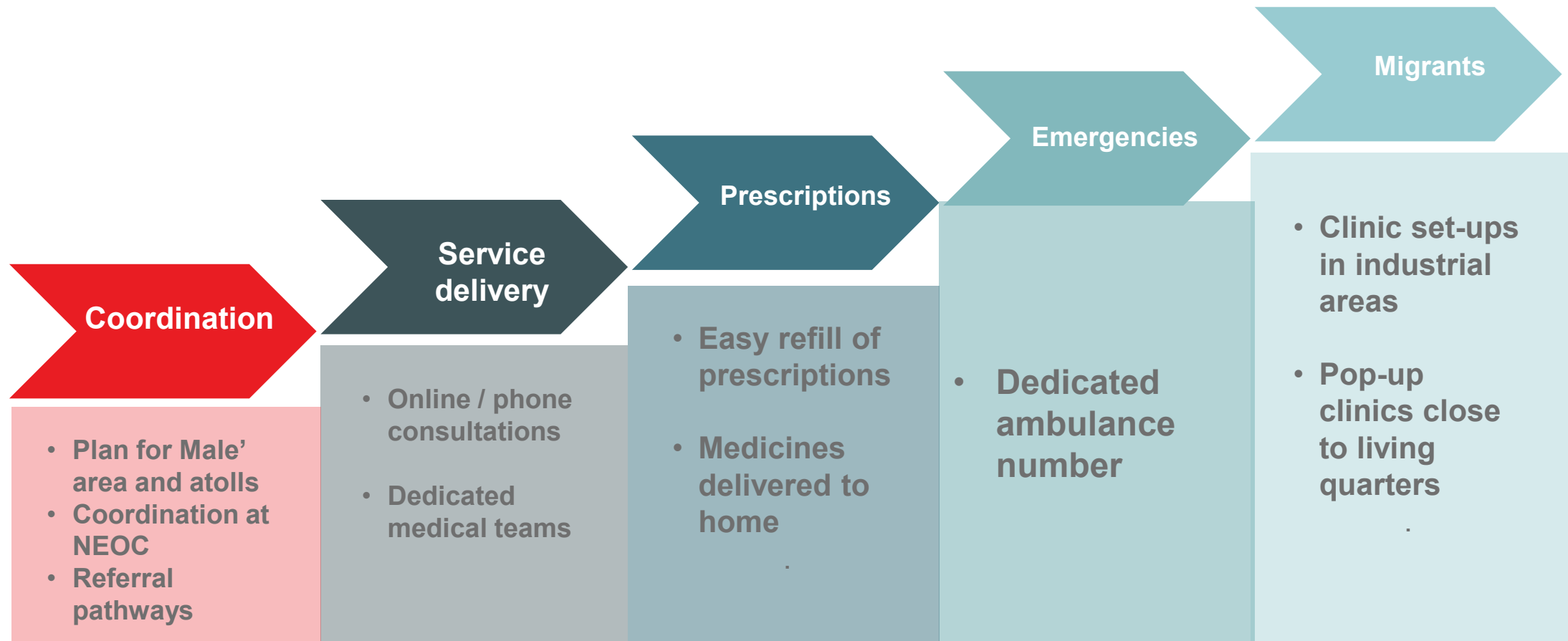


**Extensive testing, community surveillance, contact tracing**



**National level coordination with early multi-stakeholder engagement**

# ESSENTIAL HEALTH SERVICES



# PARTNERSHIPS



**Telecom company-  
sample-taking kiosks**



**Pvt. Hospital as  
designated COVID  
Hospital in Male' area**



**Maldivian Red  
Crescent- PSS and  
migrants**



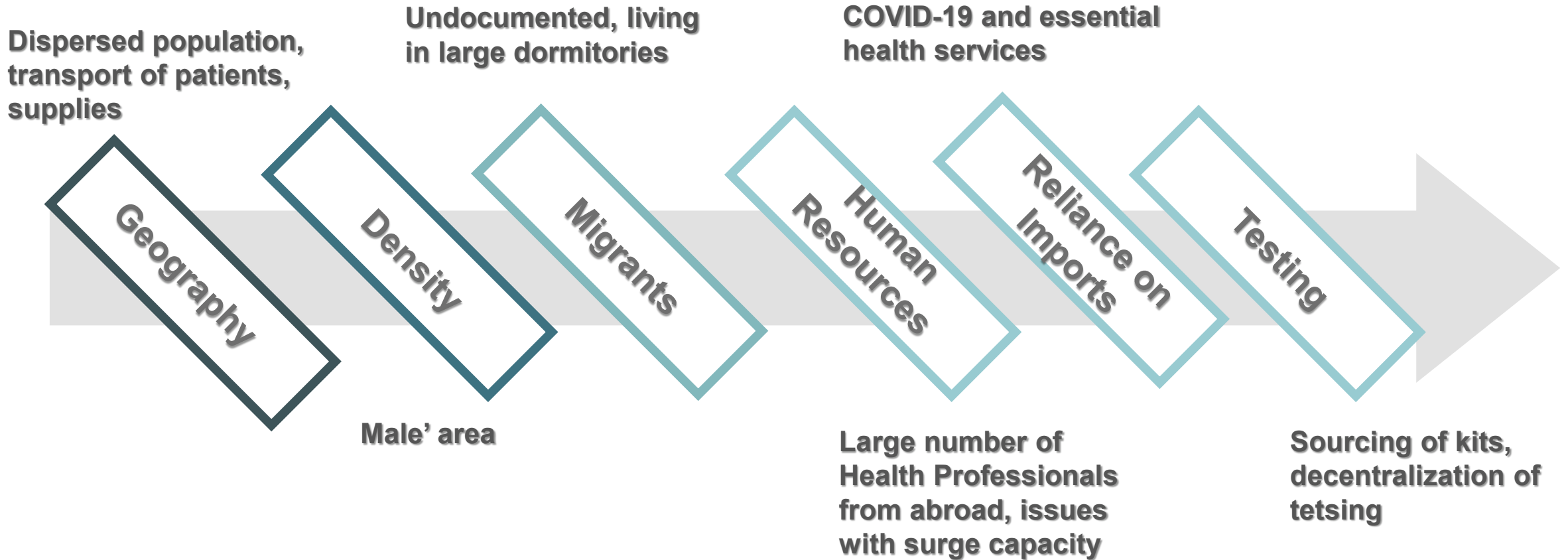
**Partnered with SHE  
(NGO), Police lab and  
ADK pvt hospital for  
testing**

**International Agencies: WHO, UNICEF, UNFPA, World Bank, AIIB, UNOPS, IDB, ADB, EU**

**Bilateral cooperation**



# Challenges





**THANK YOU**

