

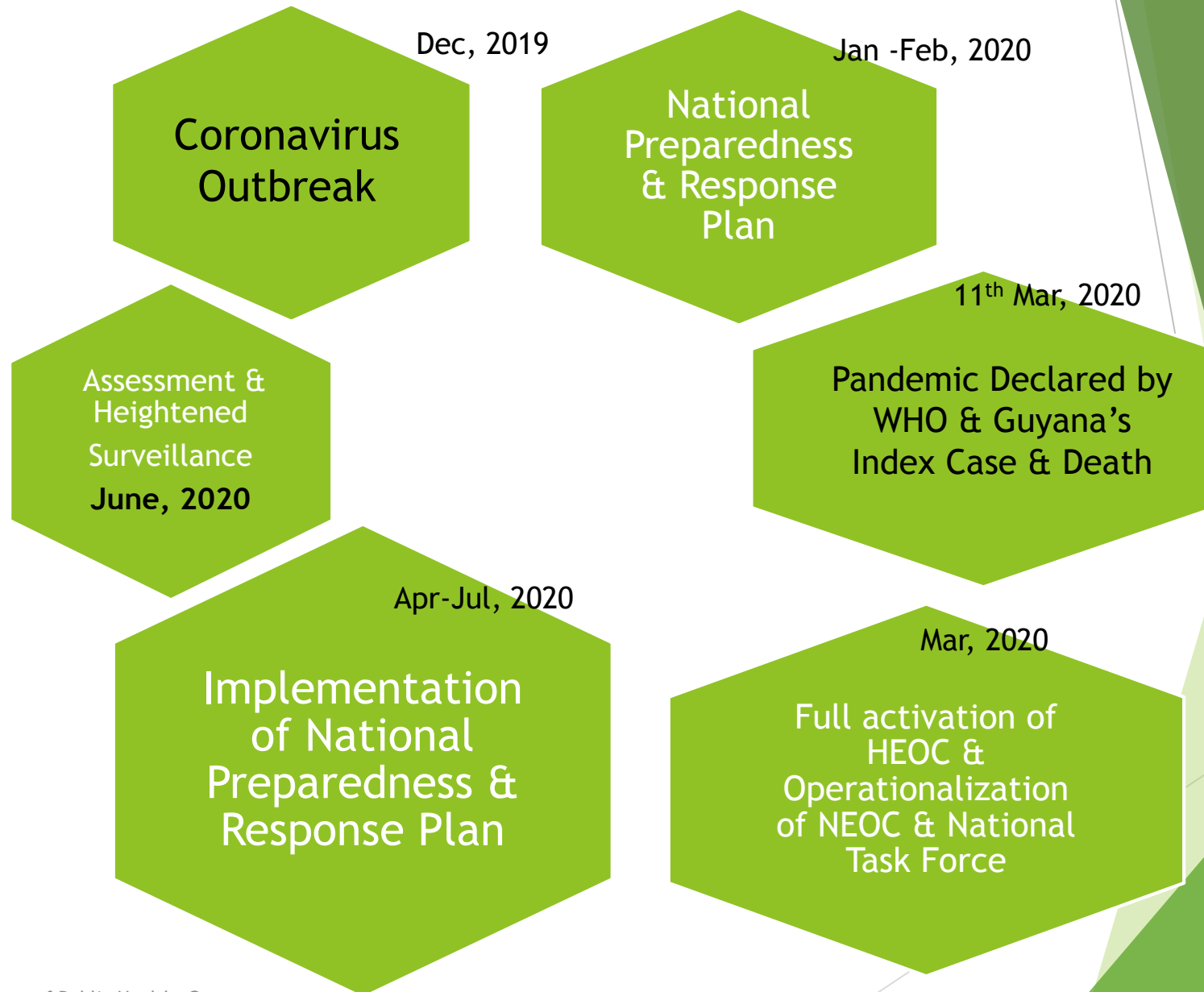


# GUYANA'S COVID-19 Experience & Response

presented by  
**Hon. Volda Lawrence,**  
Minister of public health



# Background



# National & Regional Preparedness & Response

- ▶ Activation of the Health Emergency Operations Committee
- ▶ Activation of the National Emergency Operations Centre
- ▶ Activation of the Regional Health Emergency Operations Committees

## Health Emergency Operations Centre

- Key Departments from the Ministry of Public Health
- Other sectors: Other Ministries, CDC, PAHO, UNICEF

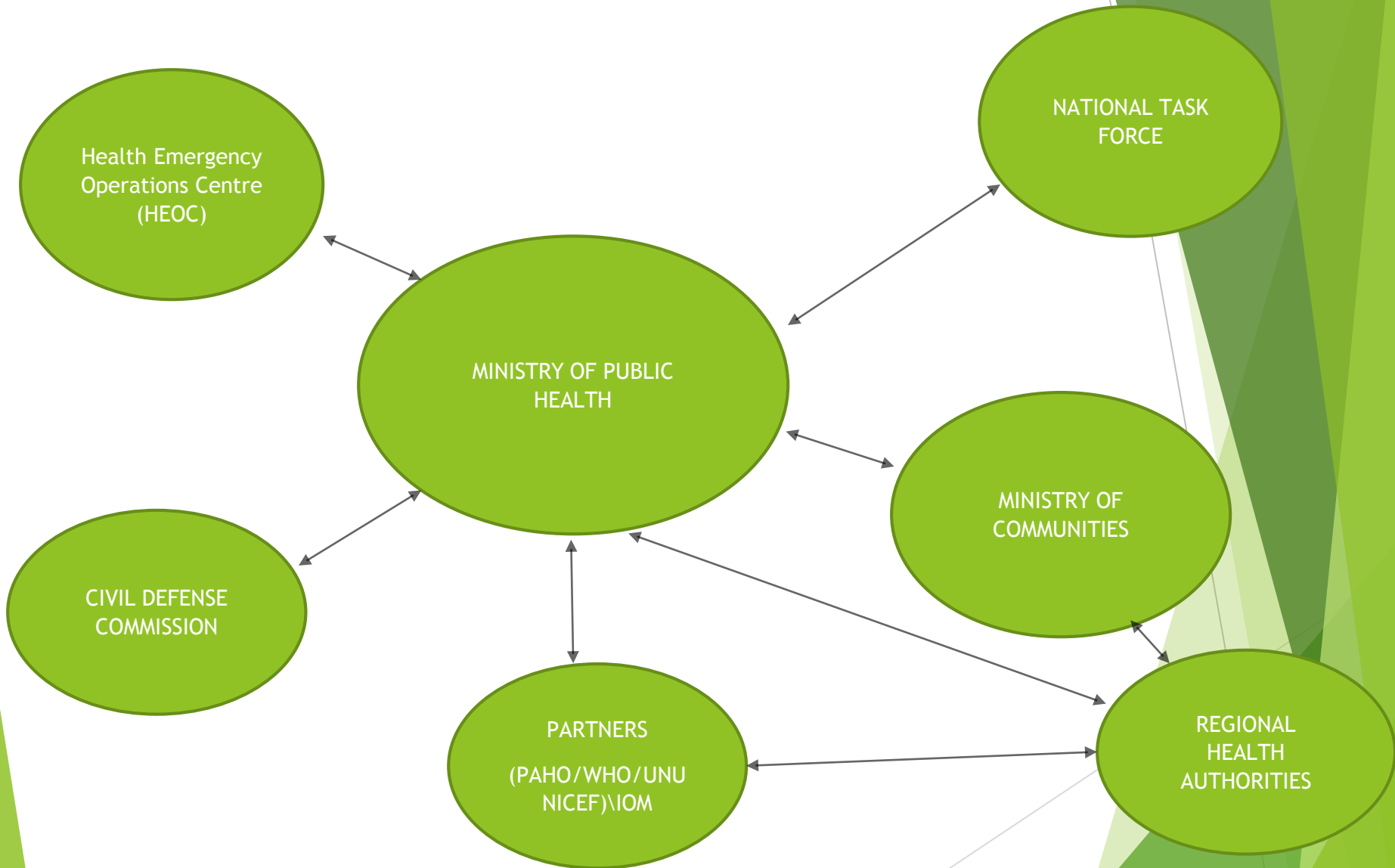
## National Health Emergency Operations Centre

- MoPH, CDC , other Government Ministries
- International and National Partners including NGOs

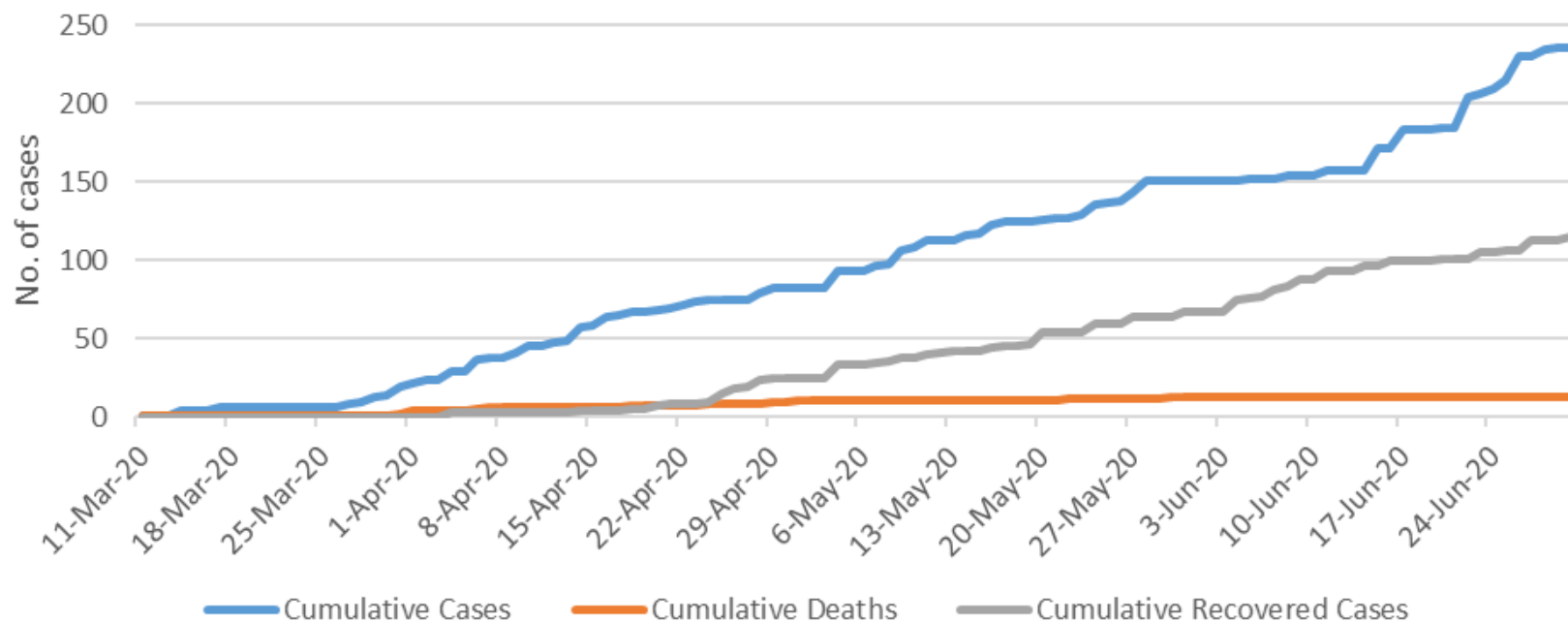
## Regional Health Emergency Committee

- Regional Health Officer (Lead) with support from the Regional Executive Officer
- Other key players (Security Services, Tushaos, private sector, NGO's)

# COVID-19 Response Management

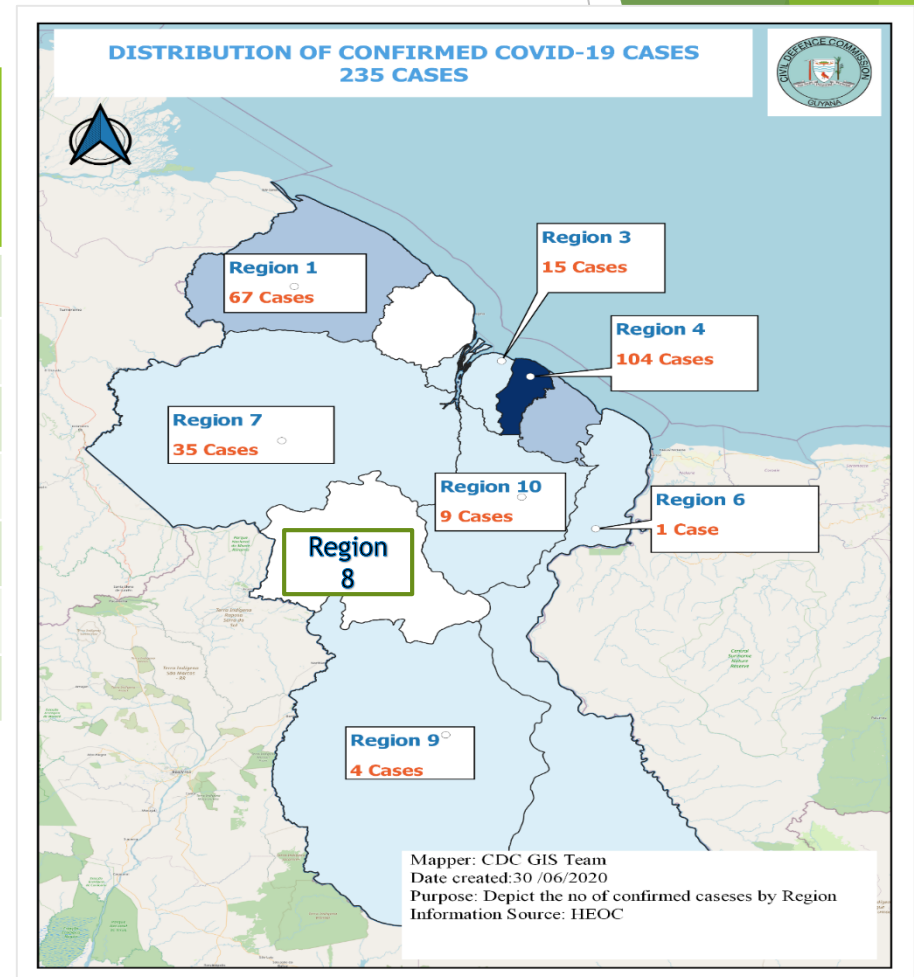


## Cumulative COVID-19 Positive Cases, Recovered Cases, and Deaths



# Regional Distribution of Confirmed COVID-19 Cases

Region	No. of cases	Population (2012 Census)	Incidence per 100,000 populations
1	67	26,941	249
3	15	107,416	14
4	104	313,429	33
6	1	109,431	1
7	35	20,280	173
9	4	24,212	17
10	9	39,452	23



# Epidemiology Data as at June 30<sup>th</sup>, 2020:

NUMBER TESTED -  
2578 PERSONS

NEGATIVE -2333  
PERSONS

POSITIVE  
CONFIRMED - 245  
PERSONS (10%)

RECOVERED - 114  
PERSONS (47%)

ISOLATION - 119  
PERSONS

DEATHS - 12  
PERSONS (5 %)

QUARANTINE - 16  
PERSONS

# Institution of Public Health Measures



- + Closing of all Airports
- + Closing of all official ports of entry
- + Closing of all un-official ports of entry



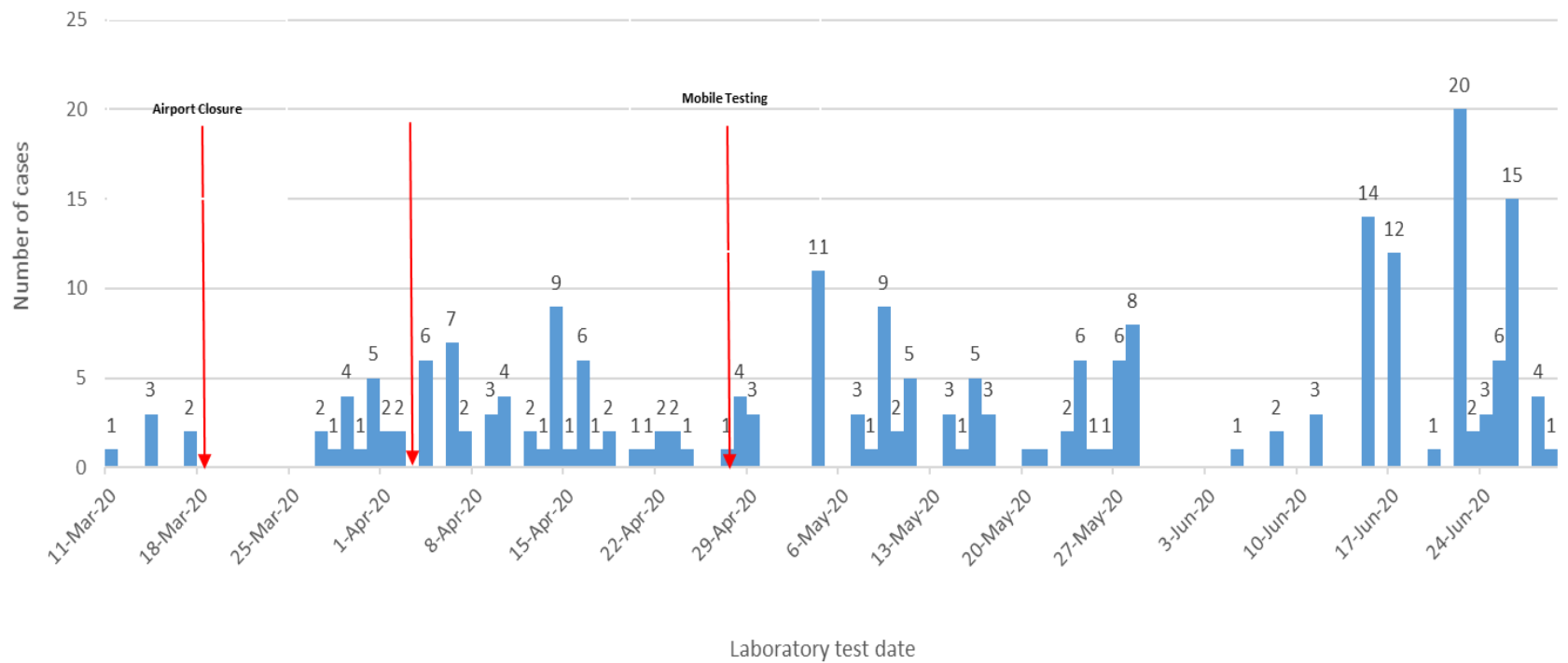
- + Institution of wearing face mask
- + Institution of physical distancing in all public & private entities
- + Limit on size of gatherings



- + Institution of the stay at home policy with only essential workers allowed to be out
- + Closure of all non-essential businesses
- + Institution of the 6pm to 6am curfew



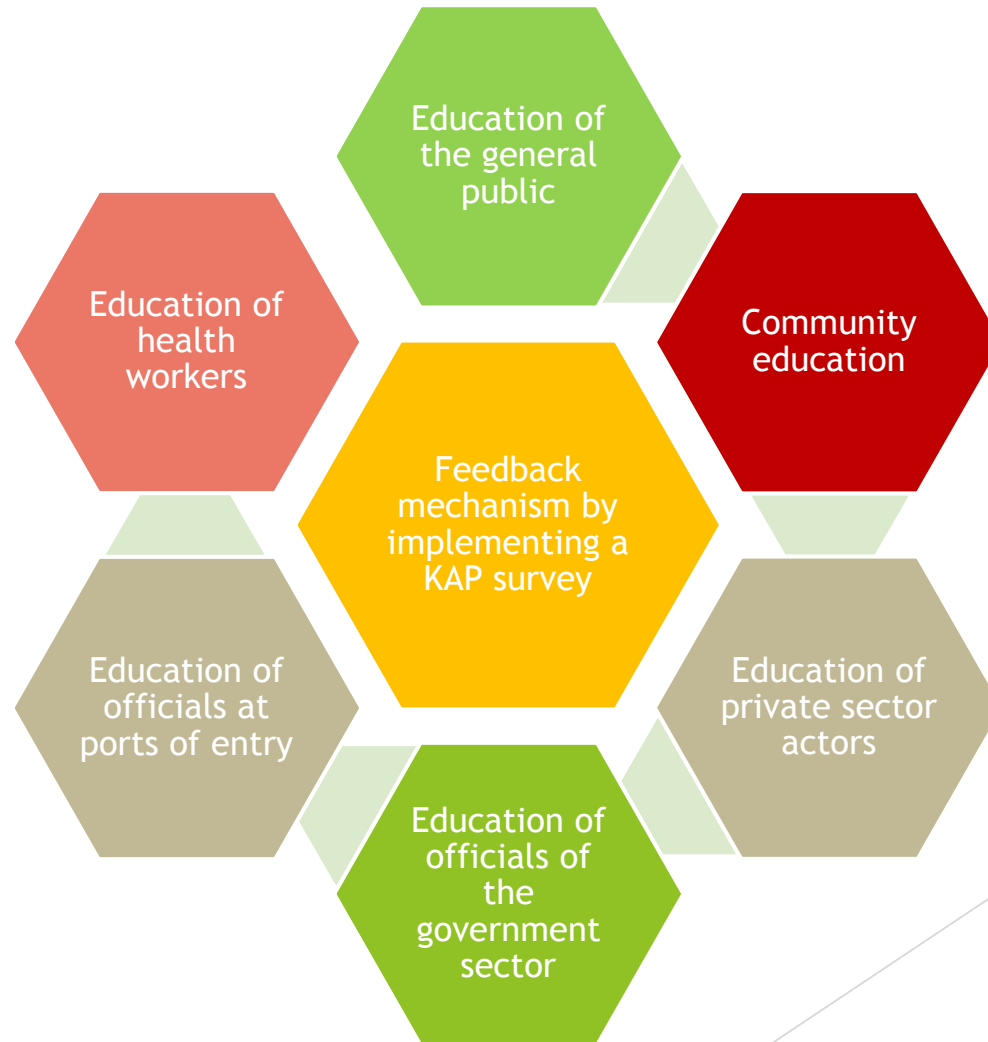
### Epidemic Curve of the Confirmed COVID-19 Cases by Laboratory Test Date



# Formulation of the COVID-19 Network



# Risk Communication



# Challenges

- ▶ Lack of adequate human resources and facilities for quarantine & isolation
- ▶ Lack of adequate communication in hard to reach areas making contact tracing difficult
- ▶ Daily cross border activities in bordering communities
- ▶ Denial among some members of the public on the seriousness of the disease because of the low mortality, Religious beliefs among others

# Lessons Learned

- ▶ Addressing COVID-19 cases while providing the continuum of care
- ▶ Using limited resources like in the case of Guyana to address several emerging health situations at the same time
- ▶ The collaborative efforts by several agencies including the private sector to address the needs, utilizing a pool of limited resources to mitigate the impending challenges
- ▶ The resilience of our Health Workers, citizenry and communities



## Next steps



The completion of  
Centre for Disease  
Control  
Corporation

Outfitting of the  
Centre for Disease  
Control  
Corporation

Training of  
specialized Health  
Care Workers in  
Infectious Diseases

Strengthening  
Surveillance

Establishment of  
COVID-19 Health  
Facilities in the  
Regions across the

Removing Measures